

# Epi Map

## S U M M A R Y

---

This lesson is an introduction to using the Epi Map module. You will create choropleth, case-based, and point maps. This lesson includes information on customizing maps and saving .MAP files.

For the asthma report, you are interested in seeing how survey results can be mapped. You will create a map containing income data for the selected region and then plot the number of asthma cases from the survey onto the map. This will give you an idea if income and asthma are related. You will then create point maps that contain the location of schools and hospitals in the region. In the Skills Review Section, you will create a map from survey data that shows you the number of students with Bronchitis per zip code.

Length of time to complete: 2 hours Beginner

### **Epi Map Overview**

Review of information needed to create maps. Provides information on navigating Epi Map and Map Types.

### **Create a Choropleth Map**

Create a choropleth map using income data and then plot asthma cases on top of it to look for correlations between income and cases of asthma.

### **Changing Map Properties**

Use the Layer Properties option box to customize a map.

### **Viewing Map Information**

Overview of using Map Tips, the Information button, and the Find button to view data applicable to the map.

### **Saving a .MAP File**

Walk-through of saving a map in an interactive format.

### **Create a Case-Based Map**

Use data aggregated in Analysis to create a case-based map for the number of cases of asthma per zip code. This data will be plotted on top of the income choropleth so you can look for correlations between asthma and income.

## **Add Text to a Map**

Use the Title and Text options to add editable text to a map.

## **Create a Point Map**

Use the Add Points option to plot school and hospital locations on the county map for the surveyed region. Includes information on using the Layer Properties options box to edit points.

## **Apply Standard Labels**

Use the Standard Labels tab to add zip code labels to a map.

## **Apply Advanced Labels**

Use the Advanced Labels tab to label the hospital locations on the map. Also covers the Zoom and Pan Features of Epi Map.

## **Use Map Layers**

Use the Add Layer feature with the Single tab to create a transparent layer showing the boundary and zip code overlaps for the region.

## **Save a Bitmap**

Walk-through of saving a map as a bitmap file for use in other programs or presentations.

## **Skills Review**

Practice creating a map for the count of students with bronchitis per zip code based on the Asthma Survey 2005 project. Use the Unique tab from the Layer Properties options box.

### **BEFORE YOU BEGIN**

---

Complete Lesson 8 Data Management for Maps in Analysis.

### **WHAT YOU NEED**

---

ALBZCTA\_region.SHP

ALBZCTA\_region.DBF

ALBZCTA\_region.PRJ

ALBZCTA\_region.SHX

Albany\_Demogz.MDB

Data Table CountAsthma

Data Table CountBronchitis

SchoolPoints.MDB

HospitalPoints.MDB

AlbanyCountyBoundary\_region.SHP

AlbanyCountyBoundary\_region.DBF

AlbanyCountyBoundary\_region.SHX

AlbanyCountyBoundary\_region.PRJ

#### F I V E G O A L S

---

- Create a choropleth map of median income for the surveyed region.
- Create a case-based map that shows the correlation between income and asthma cases.
- Create a point map to show the location of schools and hospitals in the surveyed region.
- Add a shape layer to a map as a transparent overlay to show county boundaries for the surveyed region.
- Create a map illustrating the distribution of bronchitis cases per zip code in the surveyed region.

## Using Epi Map

Choropleth and Case-Based maps can be created through Analysis; however, there are more map options available when working through the Epi Map program on its own. Epi Map contains two primary interfaces, the Map Manager and the Properties dialog box. Used together maps can be customized and saved as bitmaps for use in presentations or as .MAP files that retain interactivity and can be edited and updated as data changes. Map files are made up of 2-4 connecting files: the .SHP, which is the polygon/shape of the area to be mapped, the .DBF that contains the data, and the .SHX/.PRJ, which is the index file, linking the shape and the data together.

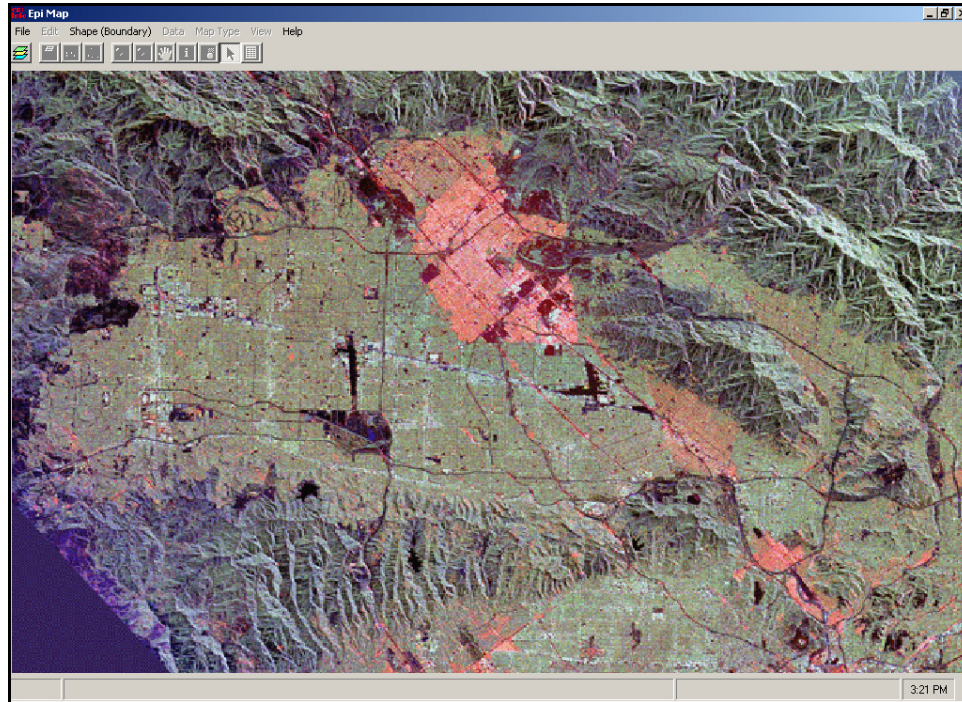
For information on how to download shape files refer to Appendix G: Preparing to Use Epi Info™.

To create maps you must follow some basic mapping rules.

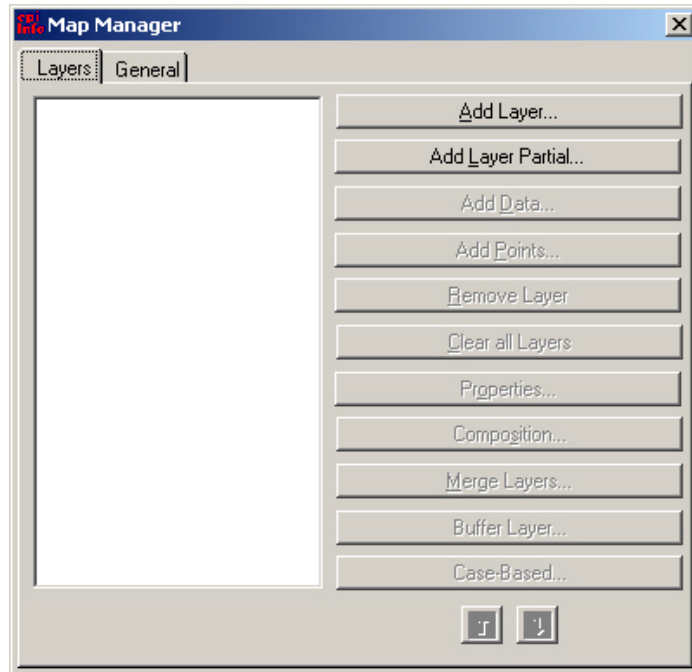
- You must have a geographic field in your dataset that corresponds to a shape file.
- Data to be mapped must be aggregated to a unique geographic field.
- Data being plotted must be in numeric format.
- Zip code fields must be in text format.
- X, Y axis fields must be numeric.

## The Epi Map Workspace

1. From the Epi Info™ main page, click **Create Maps** or select **Programs>Create Maps** to open the Epi Map module.
  - This is an example of the Epi Map workspace.



2. Select **File>Map Manager** or click the  Map Manager icon. The Map Manager opens.



## Navigating Epi Map

Most of the work in Epi Map is done from the Map Manager, which allows map layers to be constructed with shapefiles and related data variables. You will use the Map Manager to add, remove, or re-order layers. The Map Manager also allows you to Add Data, Add Points, or add Case-Based information to a map. From the Map Manager you will also access the Properties dialog box, which allows you to customize you map and how the data is displayed on it.

Maps can be saved as .MAP files that are editable and can be opened in Epi Map or through Analysis. Maps can also be saved as bitmap graphic files and used in presentations and in other programs.

Many of the features available in the Epi Map menu are also accessible through the Map Manager or the Map Tool Bar. The following options are available in the Epi Map menu.

### File

When Epi Map starts, there are three options enabled. These include Map Manager, Open Map File and Exit. Once a layer is added, then usable options are enabled.

### Edit

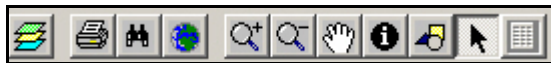
The Edit menu allows you to copy the map as a bitmap to paste to other applications.

### Shape (Boundary)

This opens the Shape Editor. The Shape Editor is a blank canvas used to design and edit polygons.

### View

Options available in the View menu are also accessible using the Map Tool Bar.



Options available through the Tool Bar are the Map Manager, Print, Find, Global Extent (centers a map on the workspace), Zoom In and Out, Pan, Information, Graphics, Cursor, and Records for Feature. Clicking the Graphics icon opens a new tool bar that allows you to add text or shapes to the map.

## Maps Types

The following maps will be created in this lesson.

### **Choropleth**

Choropleth maps are used to categorize features into equal ranges or counts (quantiles) that are color coded to indicate changes in the data. In this lesson, you will create a choropleth map that illustrates Income data.

### **Case-Based**

Case-Based maps allow users to show different symbols based on levels of classification (e.g., Confirmed, Probable, Discarded, Suspected). Epi Map produces a Case-Based legend that displays the symbols, colors and the case classification values represented. In this lesson, you will create a case-based map that shows the sum of the cases of asthma per zip code based on the frequency table you created earlier in Analysis.

### **Point Map**

Point maps require that an X, Y-axis be part of your dataset and the map file you are plotting. When creating a point map, you are also given the option to save the points as a separate shape. Points can also have labels applied to them during creation. In this lesson, you will create a point map to illustrate the locations of schools and hospitals in the survey county.

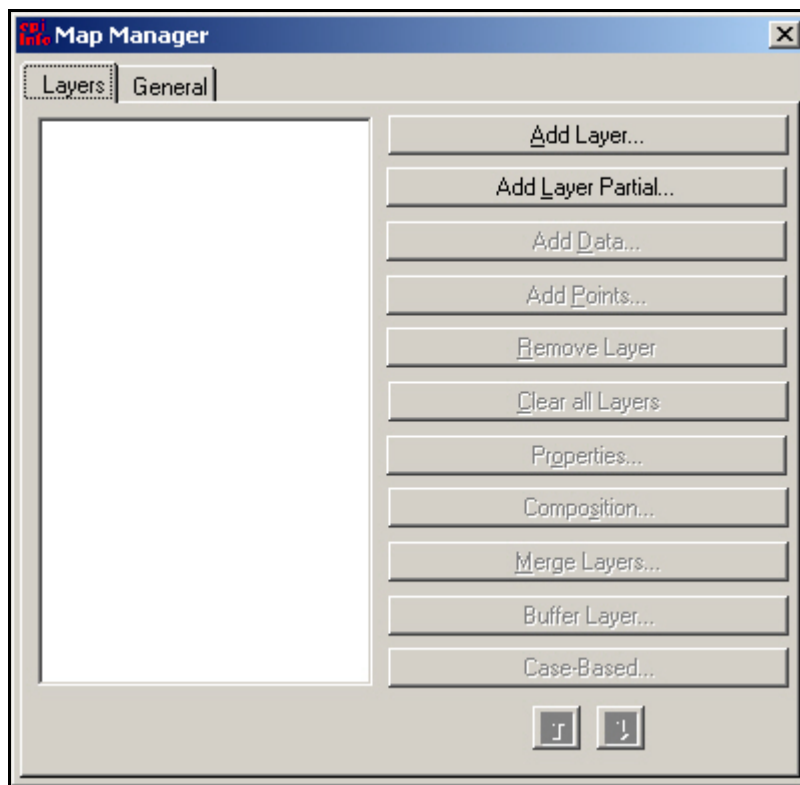


## Create a Choropleth Map

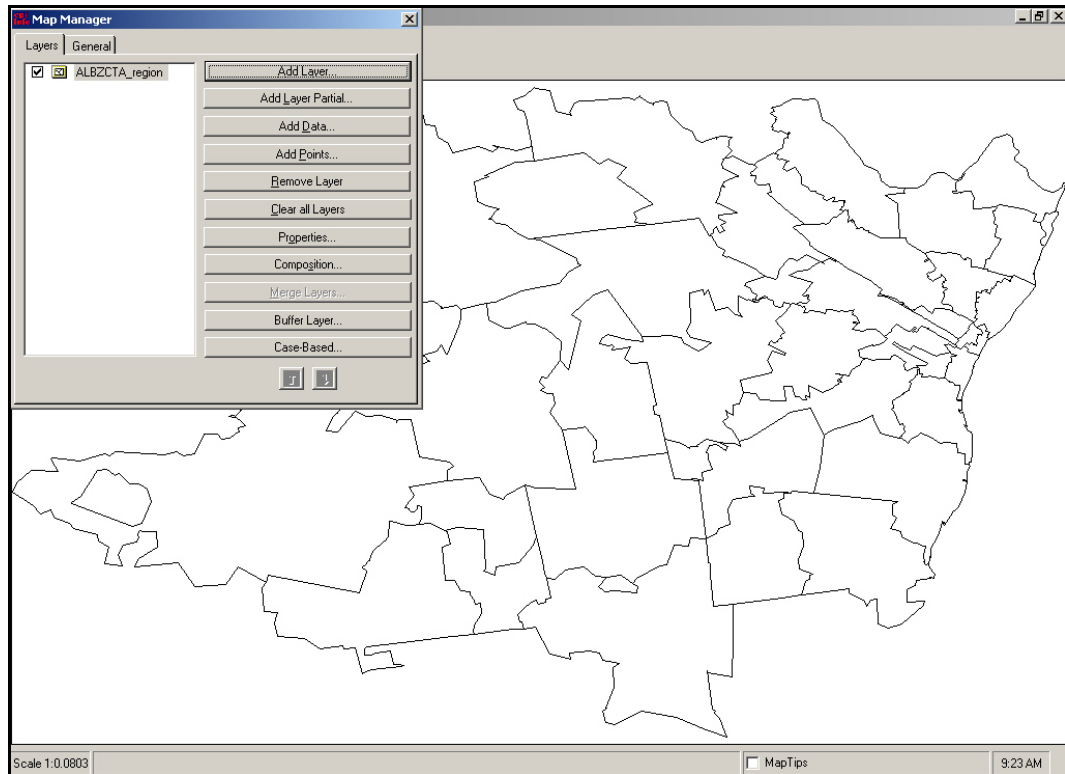
In this lesson, you will create a choropleth map, customize the map, and save the Map as a .MAP interactive map file.

The schools in the survey cover a zip code region containing a variety of demographics. To determine whether you have more cases of asthma in certain income brackets, you will create a choropleth map of the regions using income data and then map cases of asthma from the school survey onto the map. This will help you determine if there is a link between income and asthma in the students from the survey. First, create the choropleth map and then plot the case-based data on to the map.

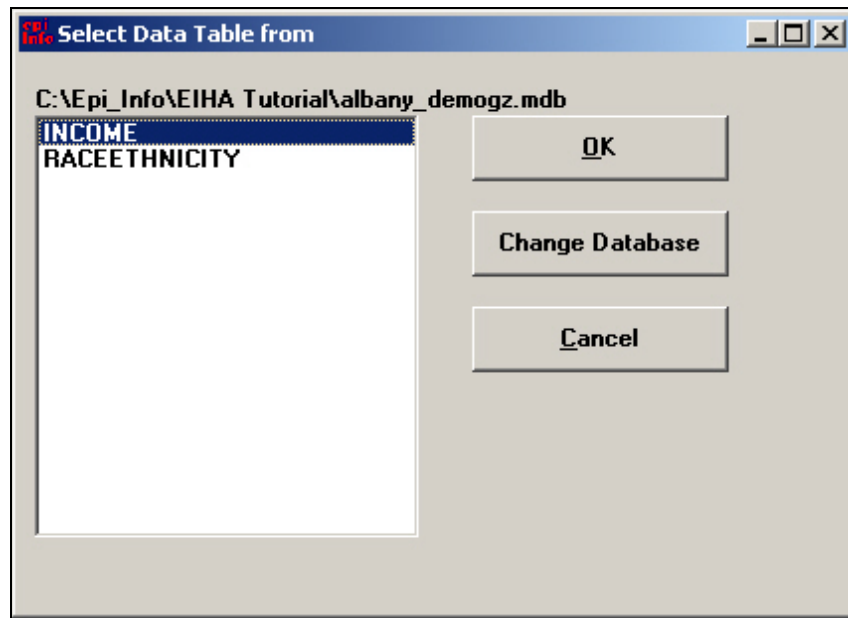
1. Open Epi Map.
2. Click the Map Manager icon or select **File>Map Manager**. The Map Manager opens.



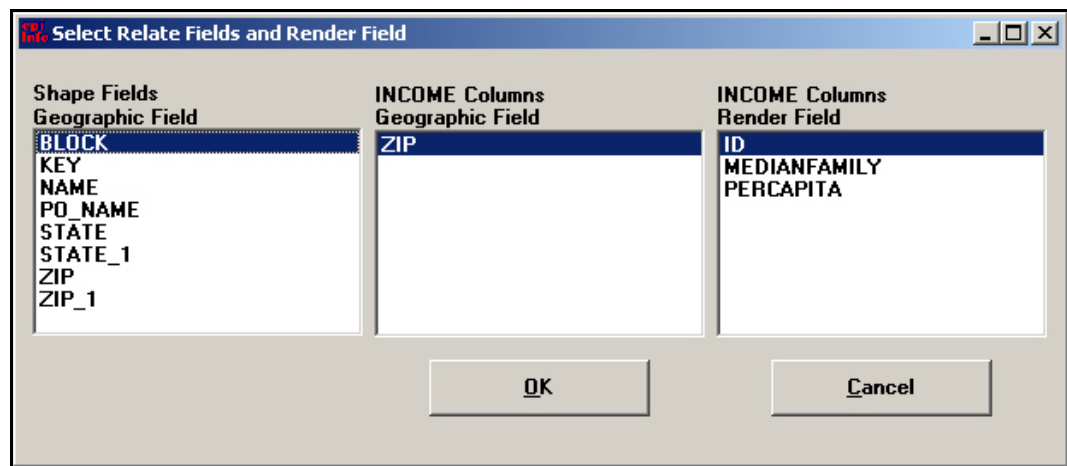
- Maps work using a series of layers. To start you need to add your region layer.
3. Click **Add Layer**. The Add Layer window opens.
  4. From the EIHA Tutorial folder, select the ALBZCA\_region.SHP file.
  5. Click **Open**. The map shape appears in the workspace and the layer appears in the Map Manager.



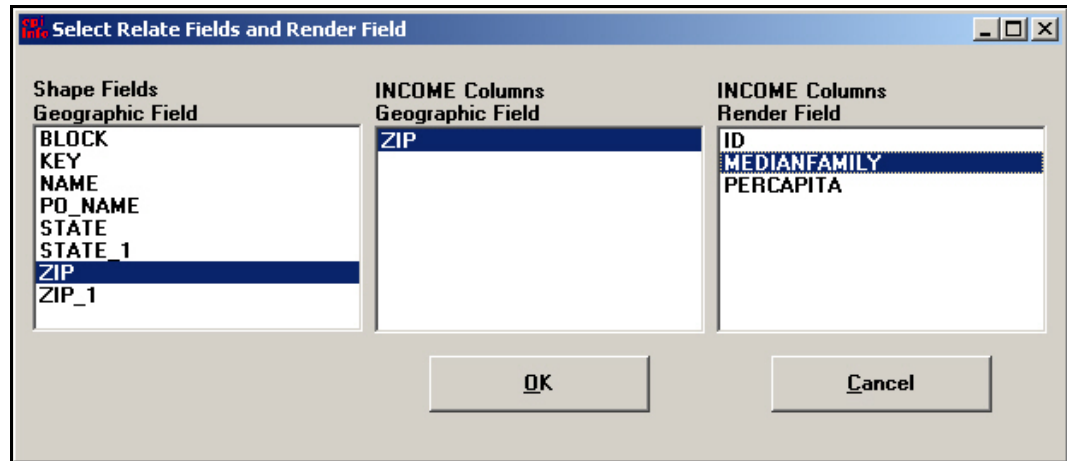
6. From the Map Manager, click **Add Data**. The Open Data Project window opens.
  - Remember that data needs to be in an Epi Info™ project or MS Access file to be plotted on the map.
7. Locate the EIHA Tutorial folder, select the file albany\_demogz.mdb.
8. Click **Open**. The Select Data Table From dialog box opens.
  - There are two tables in the demographic project. One table contains Income data and one contains Race and Ethnicity data. You want to create a choropleth map using the Income data. The Income table contains a series of zip codes and the median income and per capita income for those zip codes. The median income is the value of family income with 50% of families above the value and 50% of the families below the value. Per capita income is the total income for that zip code divided by the population.



9. Select INCOME.
10. Click **OK**. The Select Relate Fields and Render Field dialog box opens.

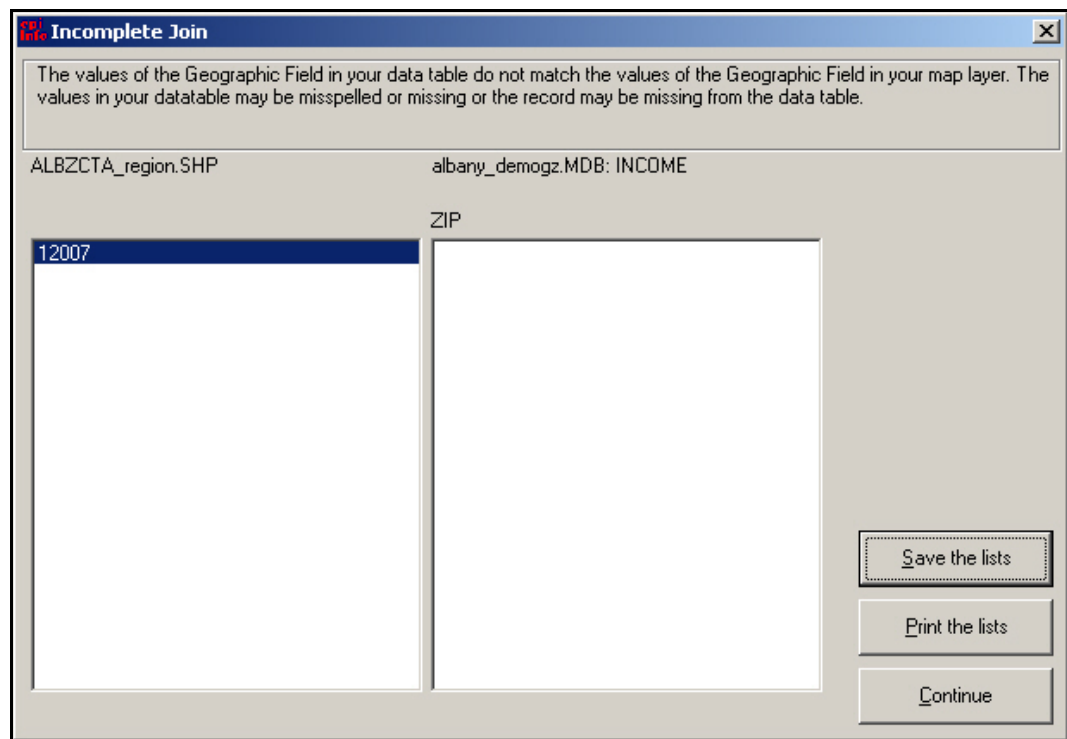


11. From the Shape Field Geographic Field box, select Zip.
  - This is the field inside the shape file that matches your data.
12. From the INCOME Columns Geographic Field, select ZIP.
  - This is the field inside your data that matches the shape file.
13. From the INCOME Columns Render Field, select MEDIANFAMILY.
  - This is the data field to be mapped.
  - The Select Relate and Render Field dialog box should look like the following.



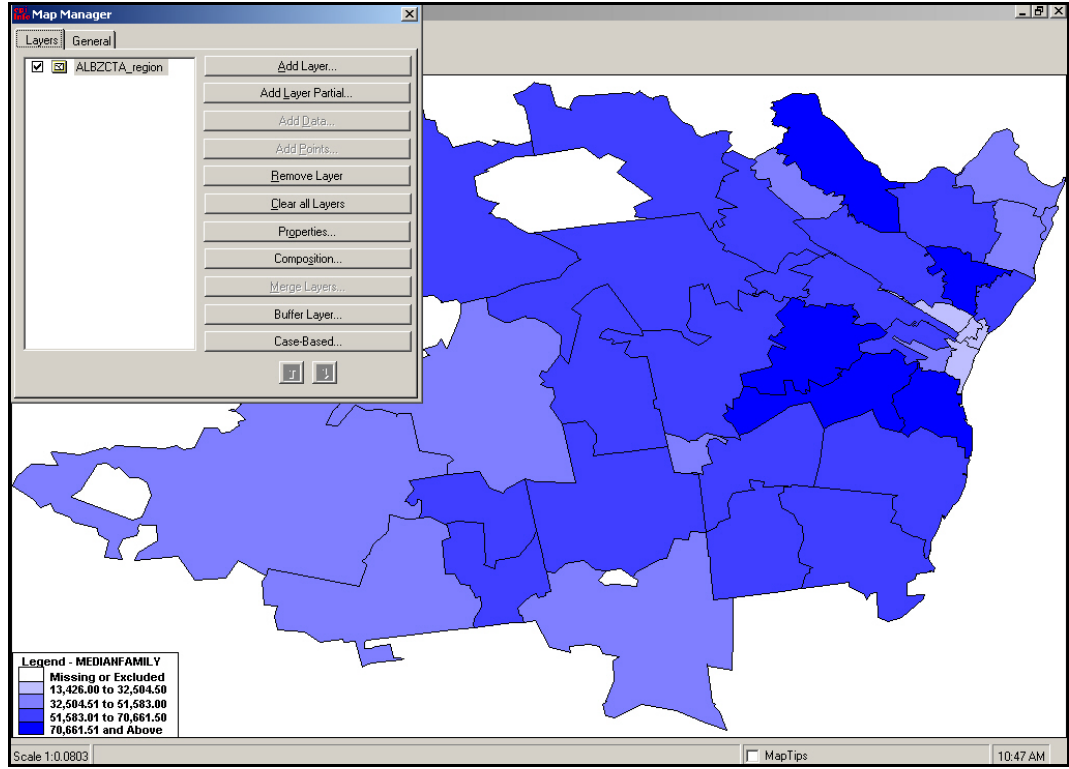
14. Click **OK**. The Incomplete Join window opens.

- This window tells you that the ALBZCTA\_region file contains information on the zip code 12007 that is not contained in the demographic project file.



15. Click **Continue**. The choropleth map appears. Notice the legend contains the color codes for the Median Family Income per zip with the darkest color representing the highest income range and the lightest color the lowest.

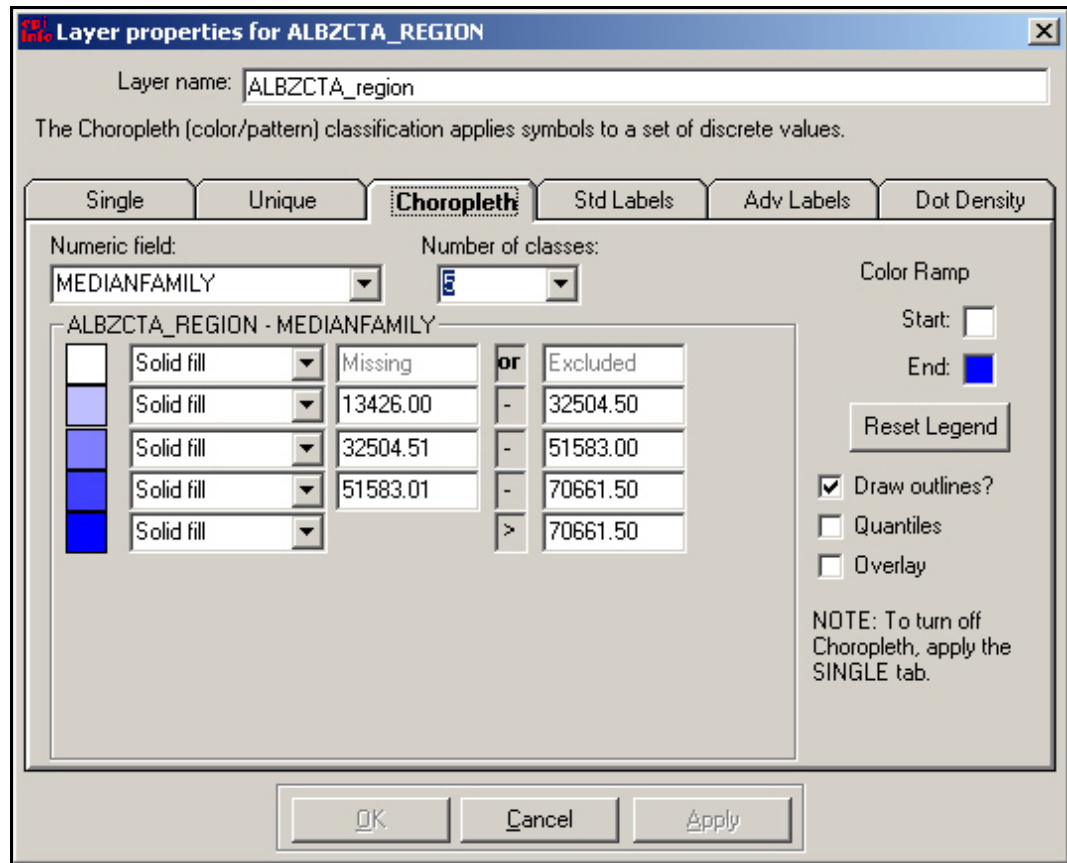
Your map should look like the following:



## Changing Map Properties

Notice that your legend contains a breakdown on information based on five divisions of data. To extend the ranges and further customize the map, you will use the Layer Properties options.

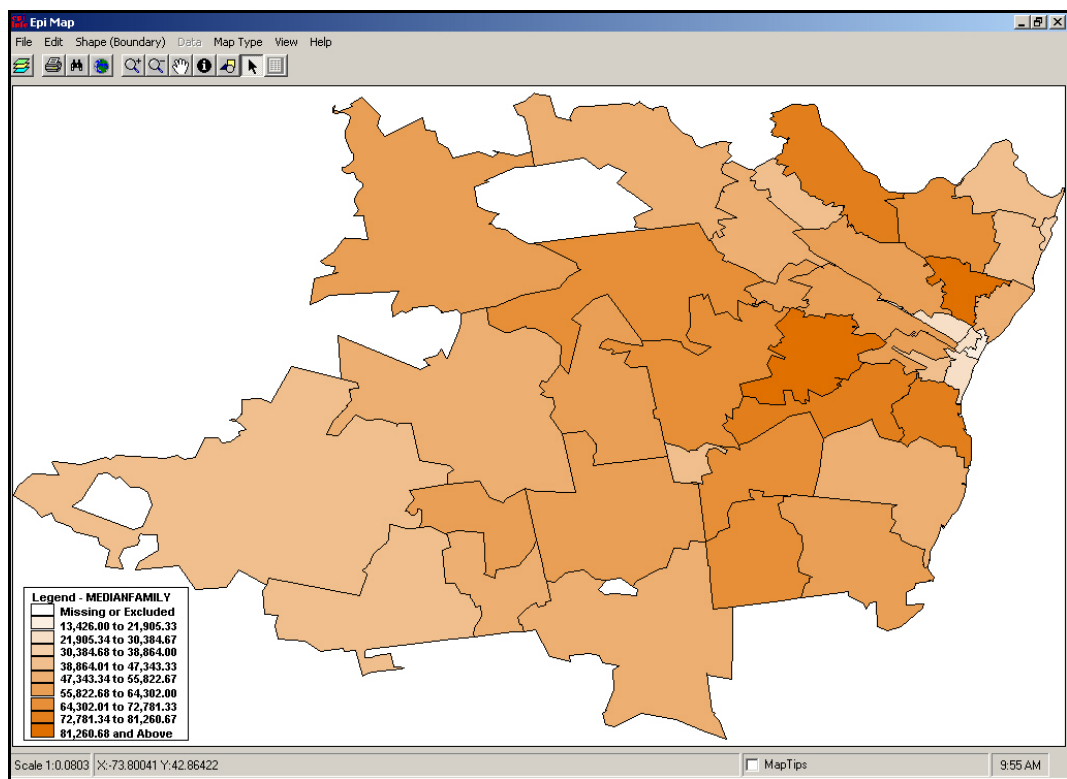
1. From the Map Manager, click **Properties**. The Layer Properties dialog box opens.



- The number of classes listed shows how many divisions, or groups, your data is broken into on the map.
  - The Color Ramp on the right side shows the lightest to darkest colors for the map codes. Use the Color Ramp to change colors inside the map.
  - Any changes you make to the choropleth map from the Property box will not be applied until you click the **Reset Legend** button. You must click **Reset Legend** to accept the changes and **Apply** to place them in the map.
2. From the Number of Classes drop-down, select 10.
  3. Click **Reset Legend**. The number of classes changes to 10.
  4. From the Color Ramp, click the End box. The Color dialog box opens.

5. Select a dark color to be the end color.
6. Click **OK**.
7. Click **Reset Legend**.
8. Click **Apply**.
9. Click **OK** to close the Properties dialog box.
10. Close the Map Manager by clicking the close X.

Your map should look similar to the following:

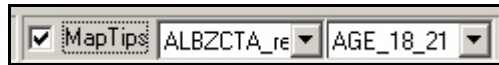


## Viewing Map Information

### Map Tips

The ALBZCTA\_region shape file contains census data as part of the associated .DBF file. To see this information, you can use the Map Tips option.


1. At the right hand bottom of the page, click the Map Tips check box. The Map Tips drop-down menus appear.



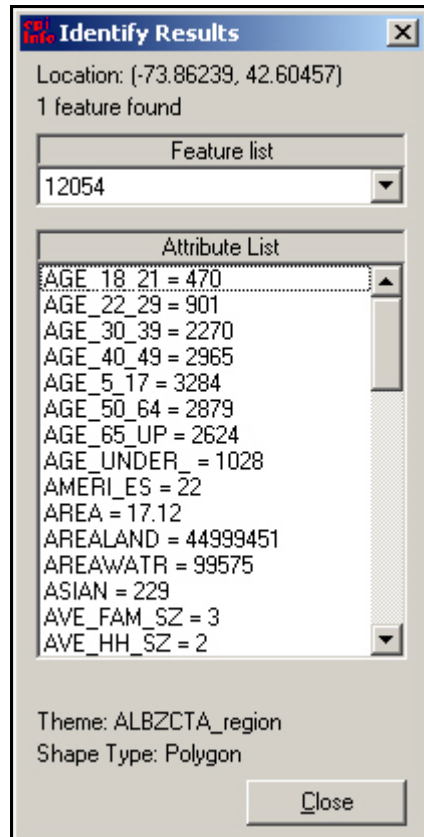
2. From the second drop-down, select Age\_5\_17.
3. Use your mouse button to hover over different map regions.
  - The number that appears under your cursor in each zip code area is the number of 5-17 year olds in that area per the census numbers.
4. Change the second drop-down selection to Zip.
5. Use your map to hover over the different map regions and see the zip codes.

### Information Icon

Another way to get information from your map is to use the Information icon.

1. Click the  information icon from the Map Tool Bar.
2. Your cursor will be tagged with the Information icon.
3. Click inside any region on the map. The Identify Results window opens.






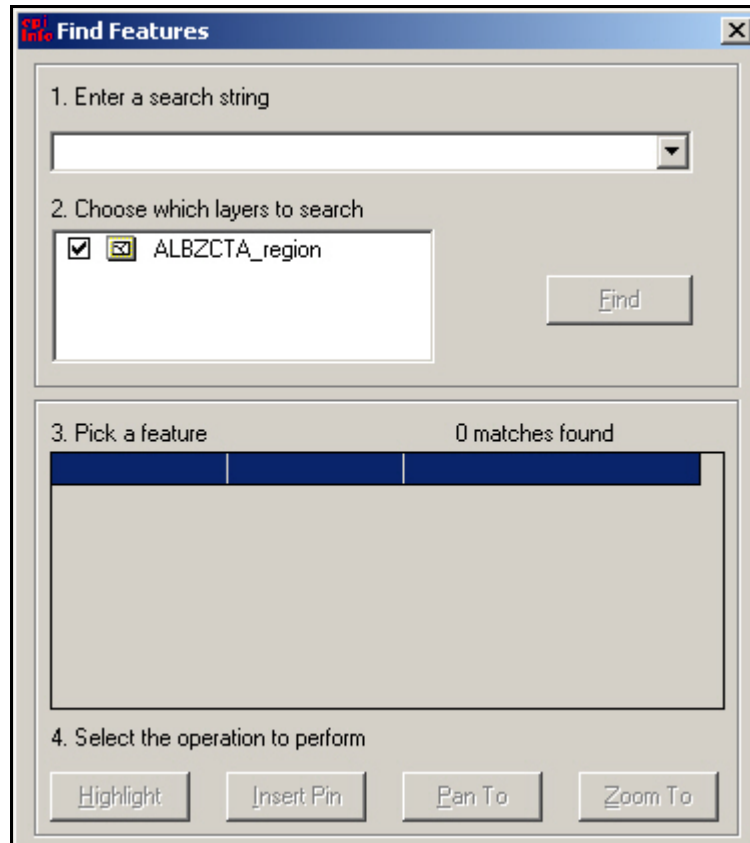
- The Identify Results window gives you a scroll-through list of all the information about your selected region contained in the dataset.

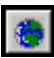
4. Click **Close** to exit this feature.

### Find Icon

Another way to locate information in the map is to use the Find feature.

1. Click the  Find (binoculars) icon to activate the Find feature. The Find Features window opens.



2. In the Enter Search String drop-down, type the zip code 12054.
3. Click **Find**. The Pick a Feature section populates.
  - Be sure the ALBZCTA\_region file is selected in the Choose Which Layers to Search field.
4. Click **Highlight** and the 12054 zip code region lights up to show its location on the map.
5. In the Enter Search String drop-down, type the zip code 12046.
6. Click **Find**.
7. Click **Highlight**.
8. Click **Zoom To**. The map zooms into the requested area.
9. Use the Close X to exit the Find Features window.
10. Click the  Full Extent icon to return the map to the center of the workspace.

## Saving a .MAP File

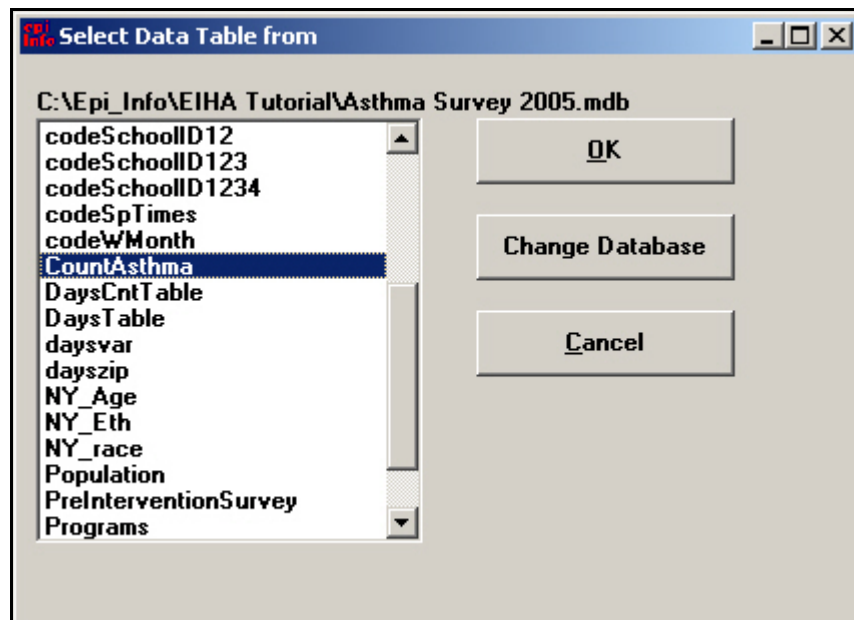
To save your map in interactive mode for editing later you can save it as a .MAP file.

1. Click **File>Save Map File**. The Save Map File window opens.
2. Name your file *Income.Asthma*.
3. Click **Save**.
4. Close Epi Map.

## Create a Case-Based Map

In this lesson, you will create a case-based map that shows the sum of the cases of asthma per zip code, based on the frequency table you created earlier in Analysis. This will help to illustrate which zip codes had more cases of asthma and the income for those zip codes.

1. Click **Create Maps**. Epi Map opens.
2. Select **File>Open Map File**.
3. Locate and open the file IncomeAsthma.MAP. This file contains the choropleth map of income you created in the previous lesson.
4. Click **Continue**, if you receive the Incomplete Join window.
5. Open the Map Manager.
6. Click **Case-Based**.
7. Locate and select the Asthma Survey 2005.MDB.
8. Click **Open**. The Select a Data Table dialog box opens.



9. Select CountAsthma from the list of tables in your project.
10. Click **OK**. The Select Case-Based Relate Fields and Classification Field dialog box opens.

**Select Case-Based Relate Fields and Classification Field**

Polygon Layer: ALBZCTA\_region

Database: C:\Epi\_Info\EIHA Tutorial\Asthma Survey 2005.mdb

Table: CountAsthma

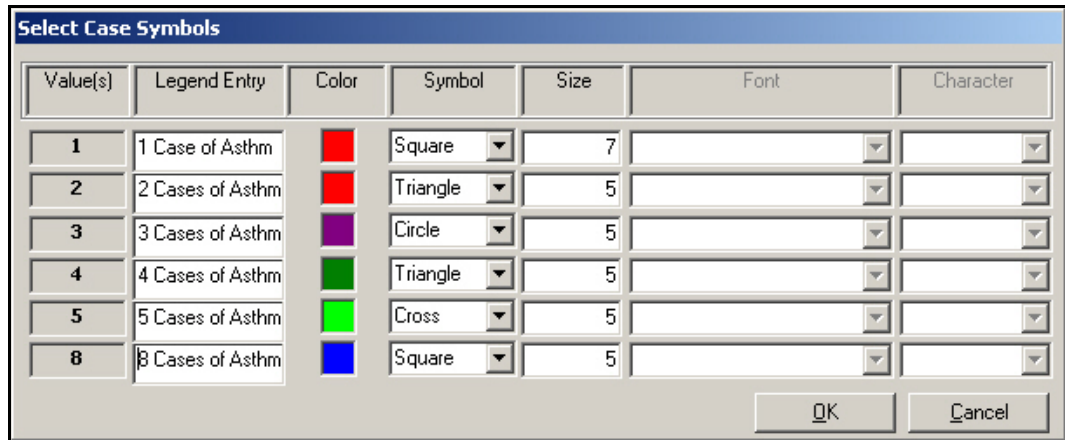
| Shape Fields<br>Geographic Field                                    | CountAsthma Columns<br>Geographic Field | CountAsthma Columns<br>Classification Field |
|---|---|---|
| BLOCK<br>KEY<br>NAME<br>PO_NAME<br>STATE<br>STATE_1<br>ZIP<br>ZIP_1 | Asthma<br>VARNAME<br>Zip                | COUNT                                       |

Initializing Case-Based process

OK Cancel

11. From the Shape Fields section, select Zip.
12. From the CountAsthma columns section, select Zip.
13. From the Classification Fields section, select Count.
14. Click **OK**. The Select Case Symbols dialog box opens.
15. Type in the Legend Entry field. The numbers in the Legend column represent the number of cases per zip code. For the number 1, type the text *1 Case of Asthma*, then *2 Cases of Asthma*. You are creating a legend title for each number in the column.

Your legend titles should look like the following:



- Look at the color column. Are there any colors too similar to the choropleth color ramp? For example, if you have a dark blue field in your choropleth layer map, you might want to select an orange or light color to represent the case shapes. If you have similar colors in two blocks, you may want to change one.

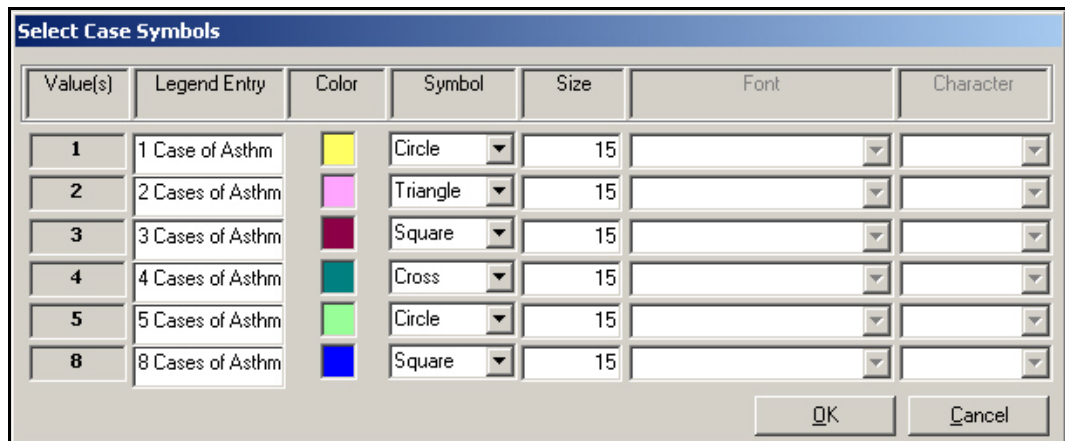
16. To change colors, click the color block and select a new color from the Color dialog box. Cases 1 and 2 both have red colors. Change one of them.

17. Use the Symbol drop-down to select shapes for each item. These shapes will populate the legend and the map.

- For this example, do not select True Type from the Symbol drop-down. If you wish to try different symbol types, you would select True Type and then from the Font drop-down select Wing Dings, or another symbol-based font. You would then select a Character from the drop-down to replace the geometric symbols in use.

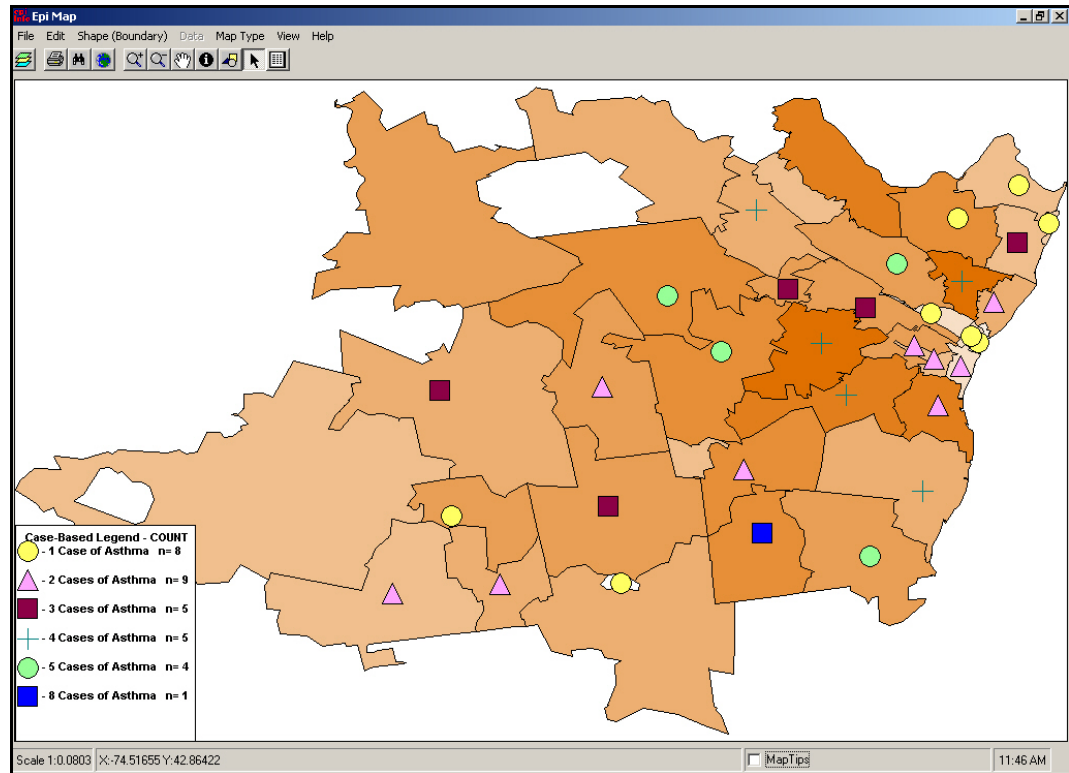
18. For the symbol size, select 15 for all.

Your Select Case Symbols dialog box will look similar to the following:



19. Click **OK**. The Map populates with the selected symbols and legend. Close the Map Manager to see the entire map.

Your map should look similar to the following:

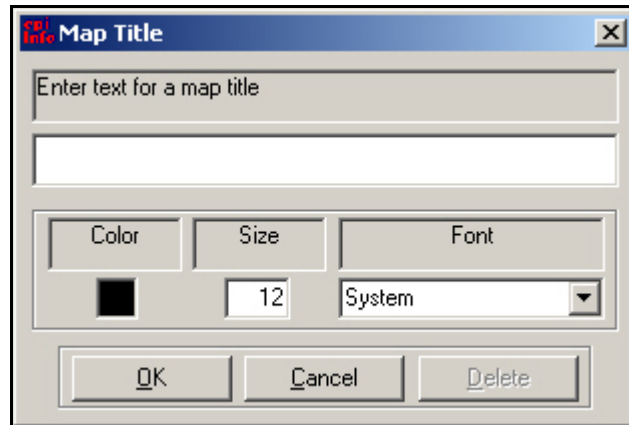



- The map legend tells you which symbol stands for the number of cases in a given zip code. The n= number tells you the total number of zip codes containing that number of cases. For example, the first symbol is equal to 1 case of asthma, and there are eight zip codes with one case of asthma.
- You can move the legend by clicking and dragging it. The map graphics may jump a little during this process. Place the Case-Based Legend on the lower left corner of your map, and the choropleth Median Income legend on the lower right corner of the map.
- Remember that the case-based information was placed on top of the income choropleth. Does the map indicate a correlation between income and asthma in the survey data?

## Add Text to a Map

Create a title for the asthma and income map.

1. From the Epi Map main navigation menu, click **View>Title**. The Map Title dialog box opens. It may take a few seconds for the text and title dialog boxes to appear.

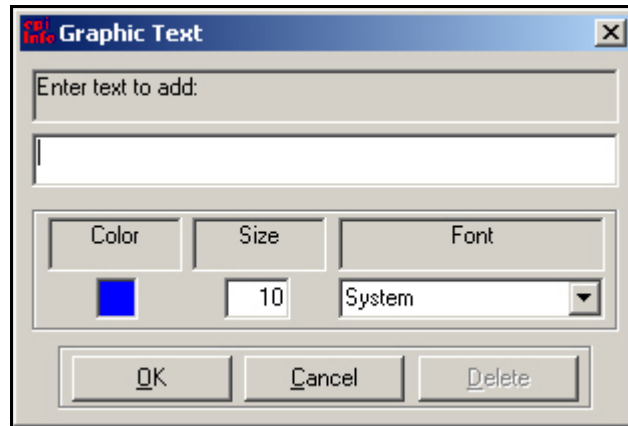



2. In the Enter Text field, type *Asthma Cases by Zip Code and Income*.
3. From the Font drop-down, select a Font.
4. Highlight the Size field and type 18.
5. Click **OK**. The title appears on your map in the top center of the page.
6. To add additional text to a map select **View>Graphics**, or click the  Graphics icon in the tool bar. The Graphics option boxes appear:



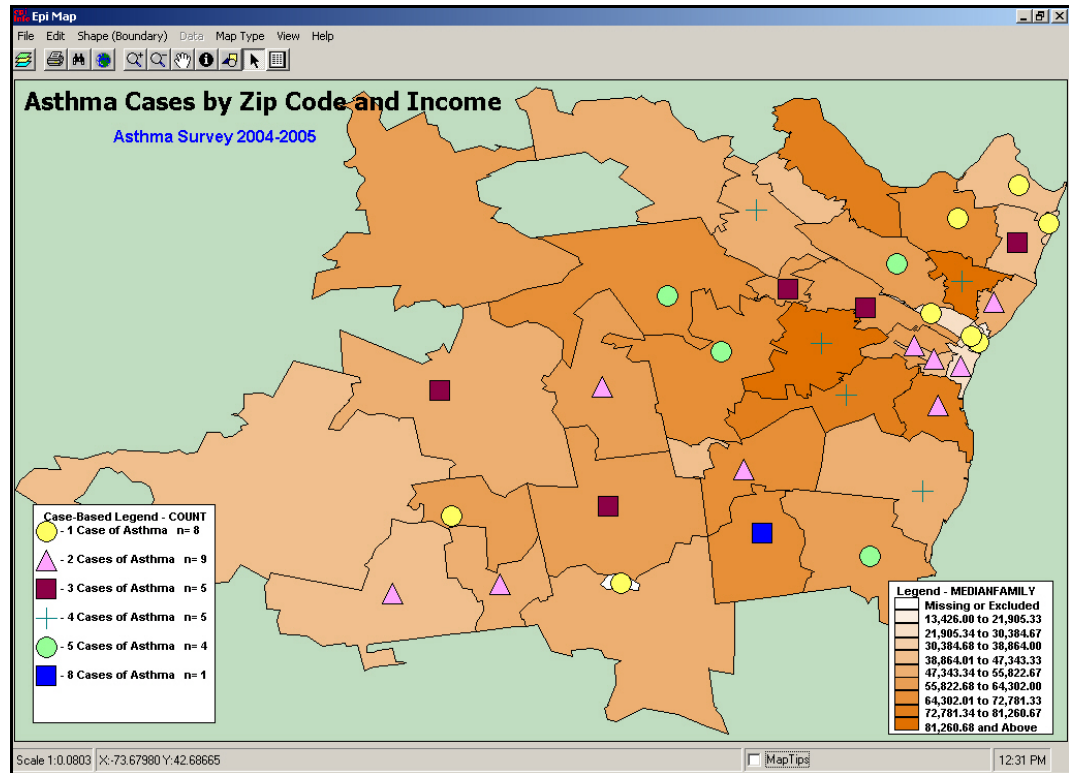
7. Select the letter **A** icon for text insertion. The cursor will turn into a crosshairs symbol.
8. Click anywhere on your map. The Graphic Text dialog box opens.





9. In the Enter Text field, type *Asthma Survey 2004-2005*.
10. From the Font drop-down, select a font style.
11. Make the text size 12.
12. Click **OK**. The text appears on your map.
  - To move your text or your title to a new location on the page, click the  Arrow icon from the Graphics Tool Bar. The cursor turns into an upright arrow. Light green crosshairs appear in the bottom center of your text fields.
  - To move text you must line up the arrow with the bottom of the green crosshairs, a box appears around the cross and the cross hairs turn red. Click, hold, and drag the box to move your text to a new location. This may take some practice.
  - To delete or edit text, double click the green cross hairs. The cross will turn red so you know it is selected. The Text box appears. Click **Delete** to remove the text or edit the text field, size, font, or color of the text, and then click **OK**.
13. Move the title and the text to a new location on the map.
14. Use Map Tips or the Information icon to find out which zip code contains eight cases on asthma.
15. Open the Map Manager.
16. Click the **General** tab.
17. Select a color block to add a background color to your map.

Your map should look similar to the following:



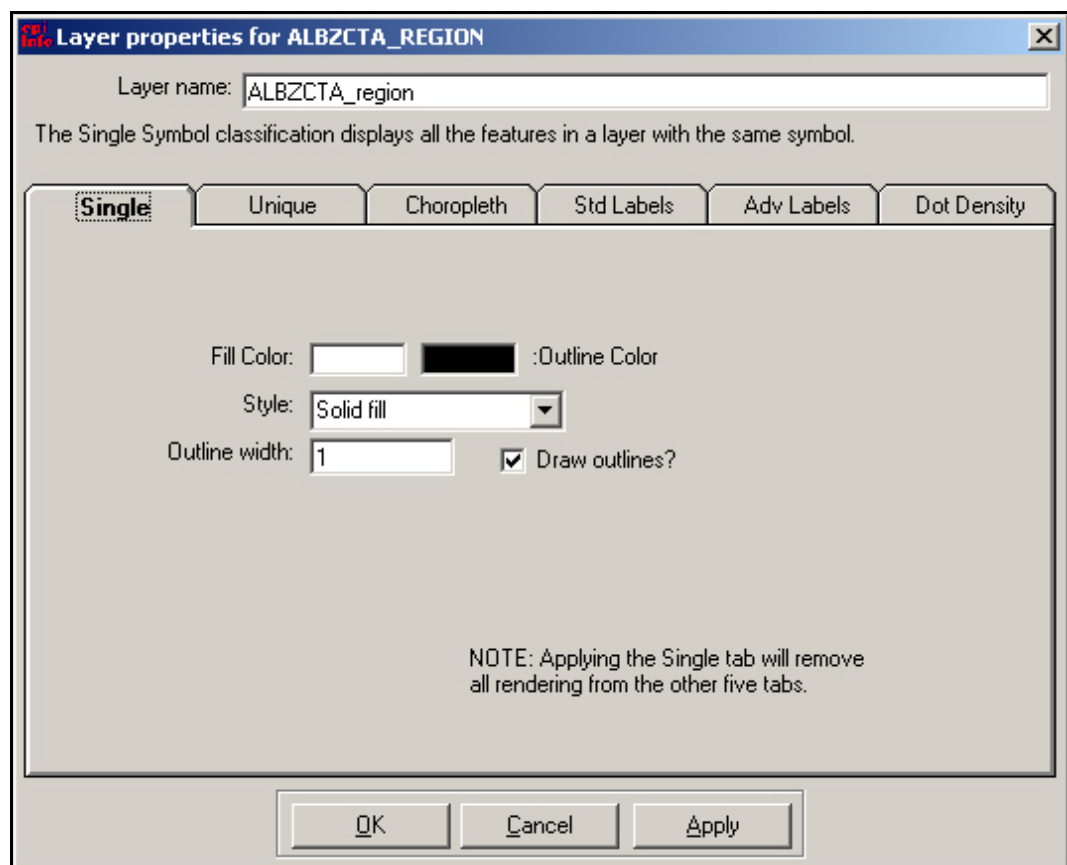
18. Close the Map Manager.
19. Save a new .MAP file with the name *CB\_AsthmaIncome*.
20. Close Epi Map.

## Create a Point Map

Point maps can be made if you have geographic data for the X, Y longitude and latitude measurements of your map corresponding to the region. X, Y coordinates are developed with GIS tracking solutions and are not available for every map or location. Most often, they are used for street maps and locations or to pinpoint specific areas.

For this map, you have X, Y coordinates related to school and hospital locations in the region. In this lesson, you will add a fill color to a map, add points, and apply a shape polygon to designate where your county crosses zip codes and boundaries. This map will give you the location of school and hospitals in the surveyed region.

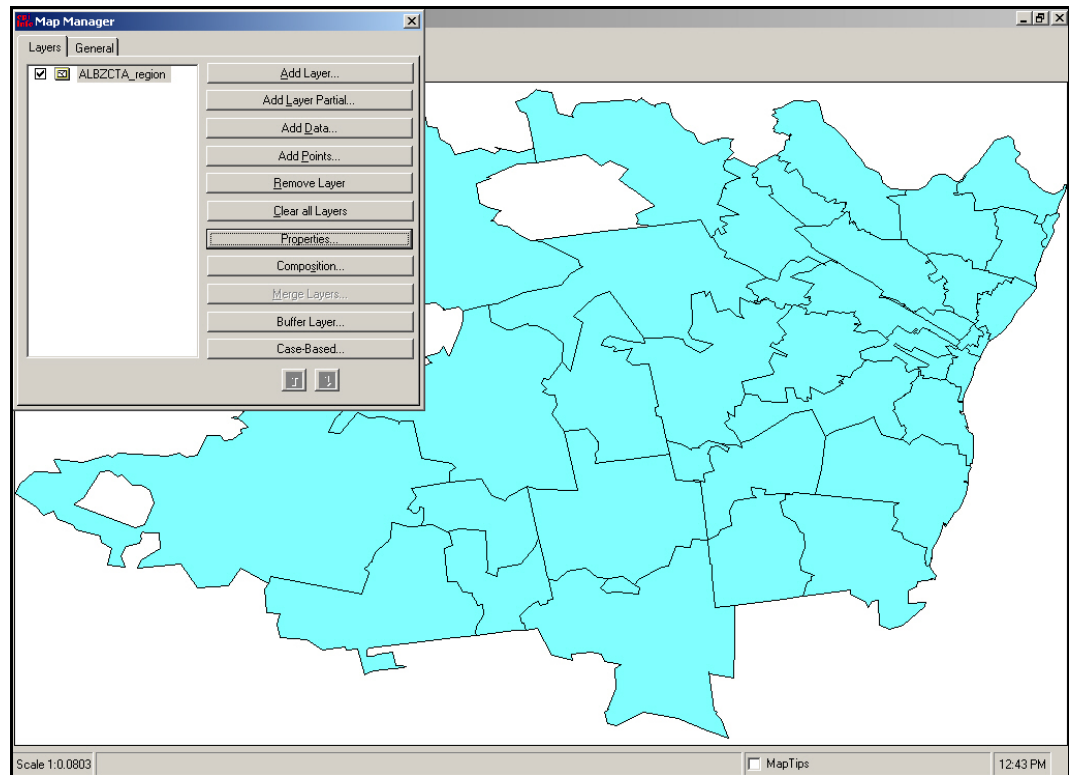
1. Open Epi Map.
2. Open the Map Manager.
3. Click **Add Layer**. Locate the ALBZCTA\_region.shp file in your EIHA Tutorial folder.
4. Click **Properties**. The Layer Properties dialog box opens.



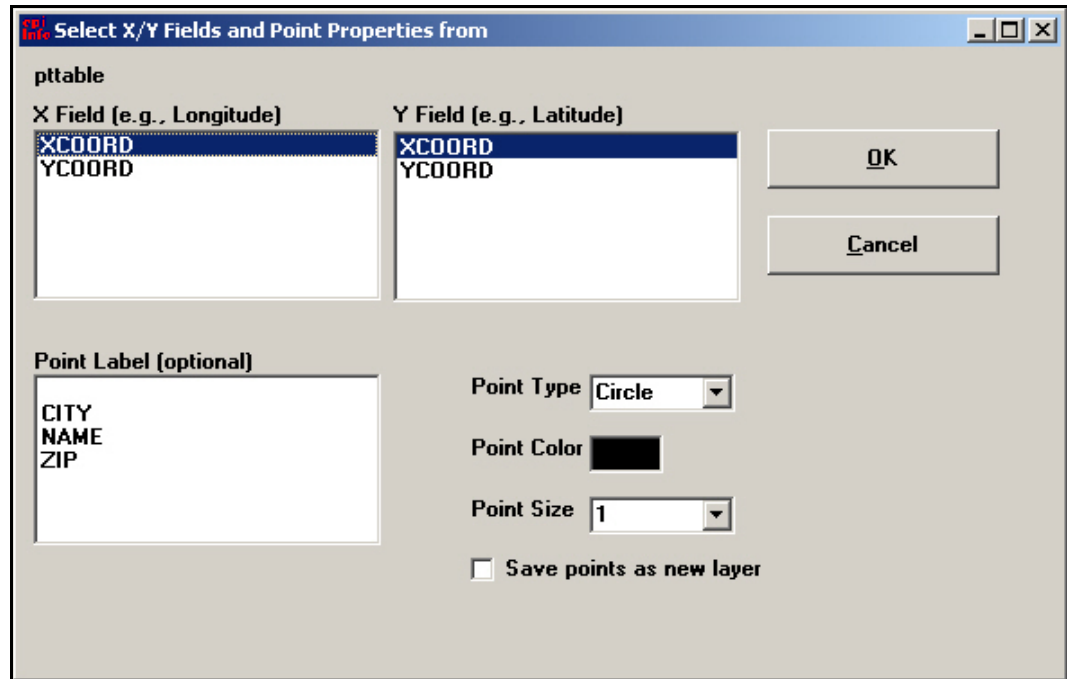
5. Click inside the Fill Color block. The Color dialog box opens.
6. Select a Fill color for your map. Try to select a light color.

- Be sure the drop-down Style menu reads Solid Fill.
7. Click **Apply**.
  8. Click **OK**.

Your map should look similar to the following:

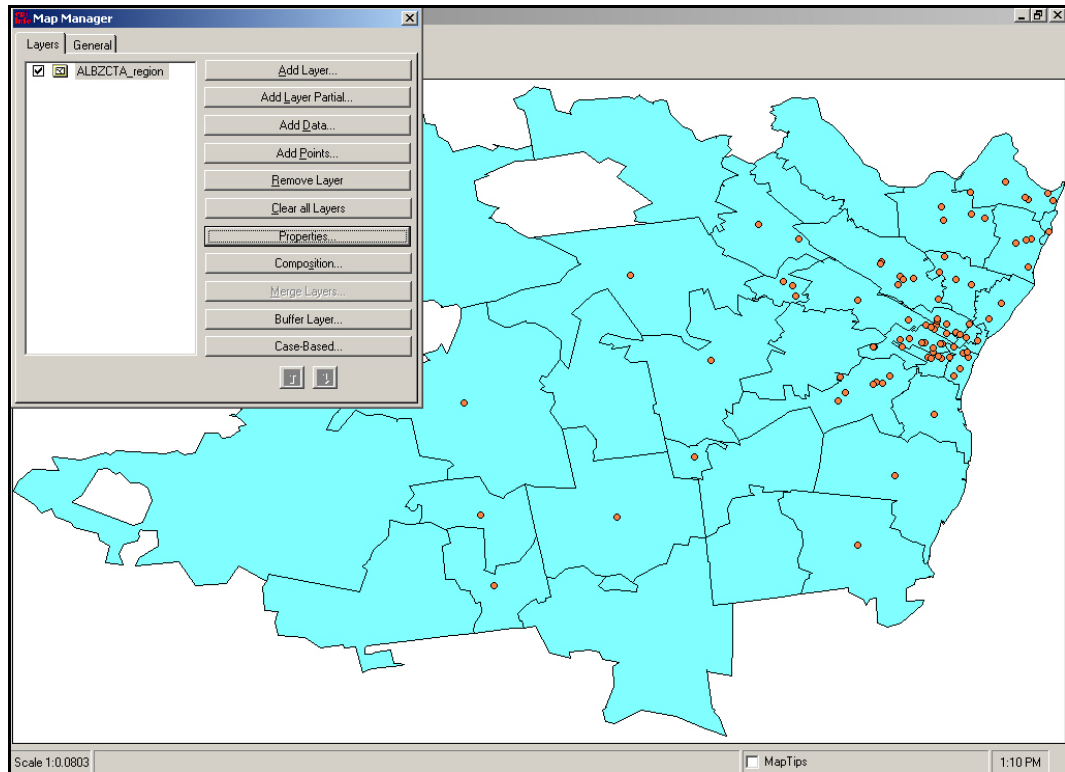


9. Click **Add Points**. The Open Data Project window opens.
10. From the EIHA Tutorial folder, locate and select the file SchoolPoints.mdb.
  - The file School Points.MDB was created using data from a map .DBF file. The file was imported into Analysis and written out to a new Epi Info™ project file to be used in Epi Map. The same process was used to create the project file used for the Hospital point data.
11. Click **Open**. The Select Data Table dialog box opens.
12. Select the table ptable.
13. Click **OK**. The Select X/Y Fields and Properties dialog box opens.



14. In the X Field Longitude section, select XCOORD.
15. In the Y Field Latitude section, select YCOORD.
16. From the Point Type drop-down, select Circle.
17. Click inside the Point Color block to select a color that will show up on the fill color you selected for the map.
18. From the Point Size drop-down, select 5.
19. Click **OK**.

Your map should look similar to the following:



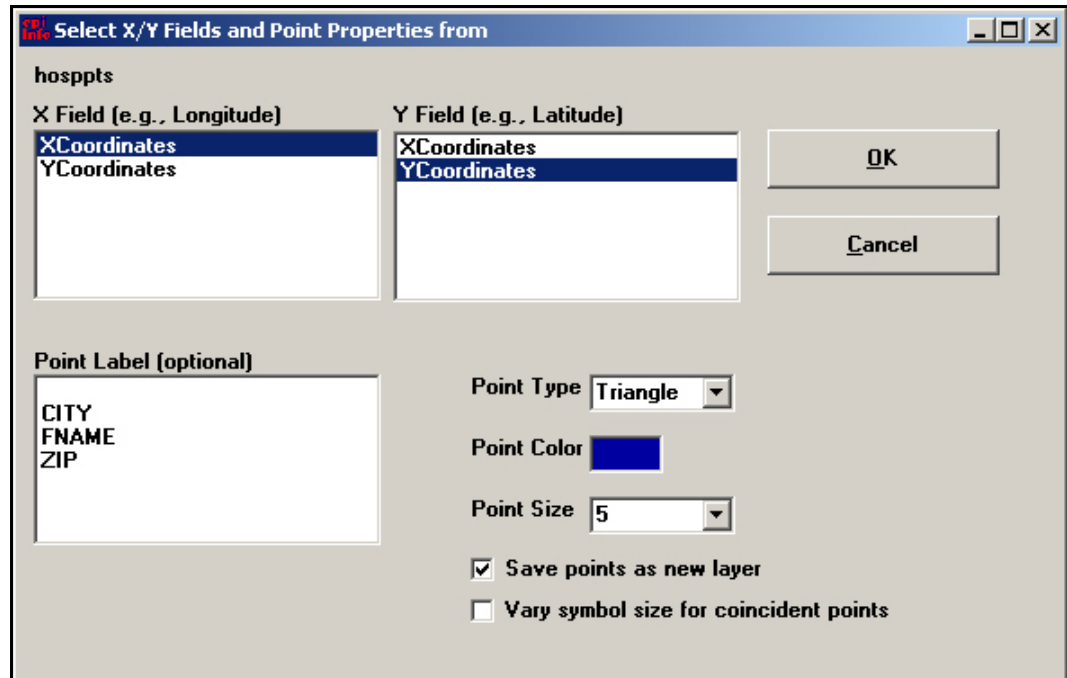
- The points added to the map are considered a new layer, but are not editable.

### Add the Hospital Points to the Map

1. Click **Add Points**. The Open Data Project window opens.
2. From the EIHA Tutorial folder, locate and select the file HospitalPoints.mdb.
3. Click **Open**. The Select Data Table window opens.
4. Select the table hosppts.
5. Click **OK**. The Select X/Y Fields and Point Properties dialog box opens.
6. From the X Field section, select XCoordinates.
7. From the Y Field section, select YCoordinates.
8. From the Point Type drop-down, select Triangle.
9. Select a new Point Color.
10. From the Point Size drop-down, select 5.

11. Select the checkbox Save Points as New Layer.

- When you save the points as a new layer, they will appear in the Map Manager as an editable layer.

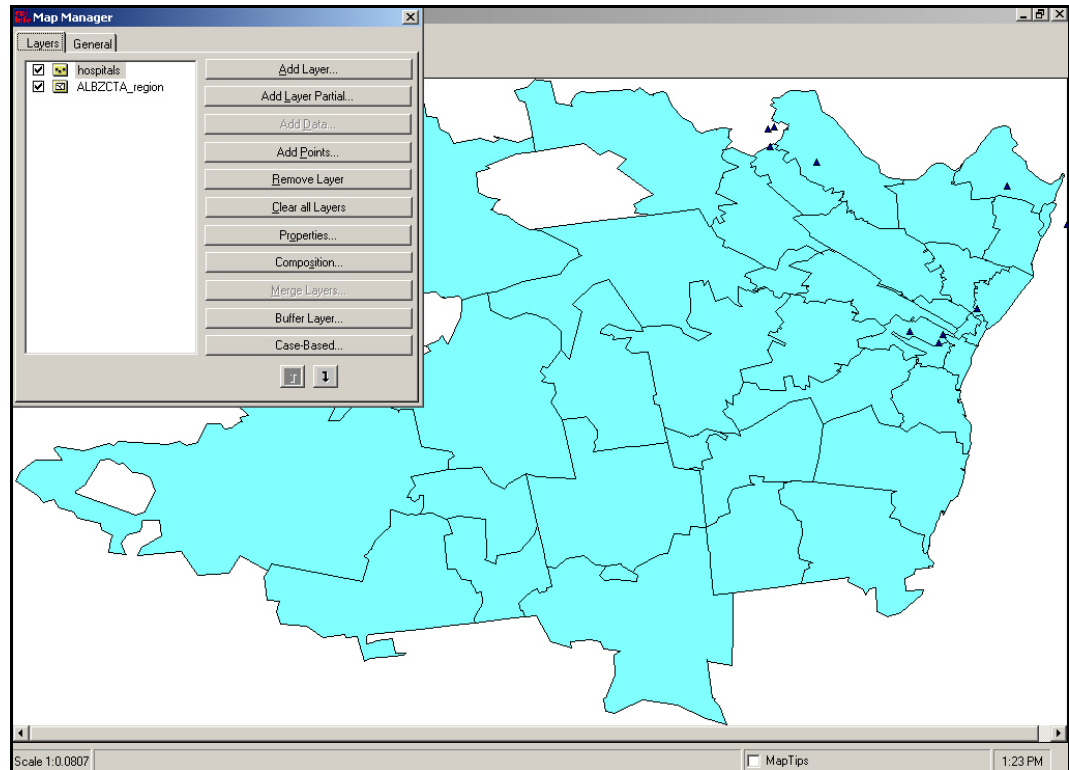


12. Click **OK**. The Save Points as Shapefile window opens.

13. Name the new file *Hospitals*.

14. Click **Save** to populate the map.

- Your map should look similar to the map below:
- Notice that the Map Manager now contains a new layer called Hospitals.
- In the list of layers, Hospitals needs to be the top layer. If it is not, highlight it and click the Up Arrow inside the Map Manager.



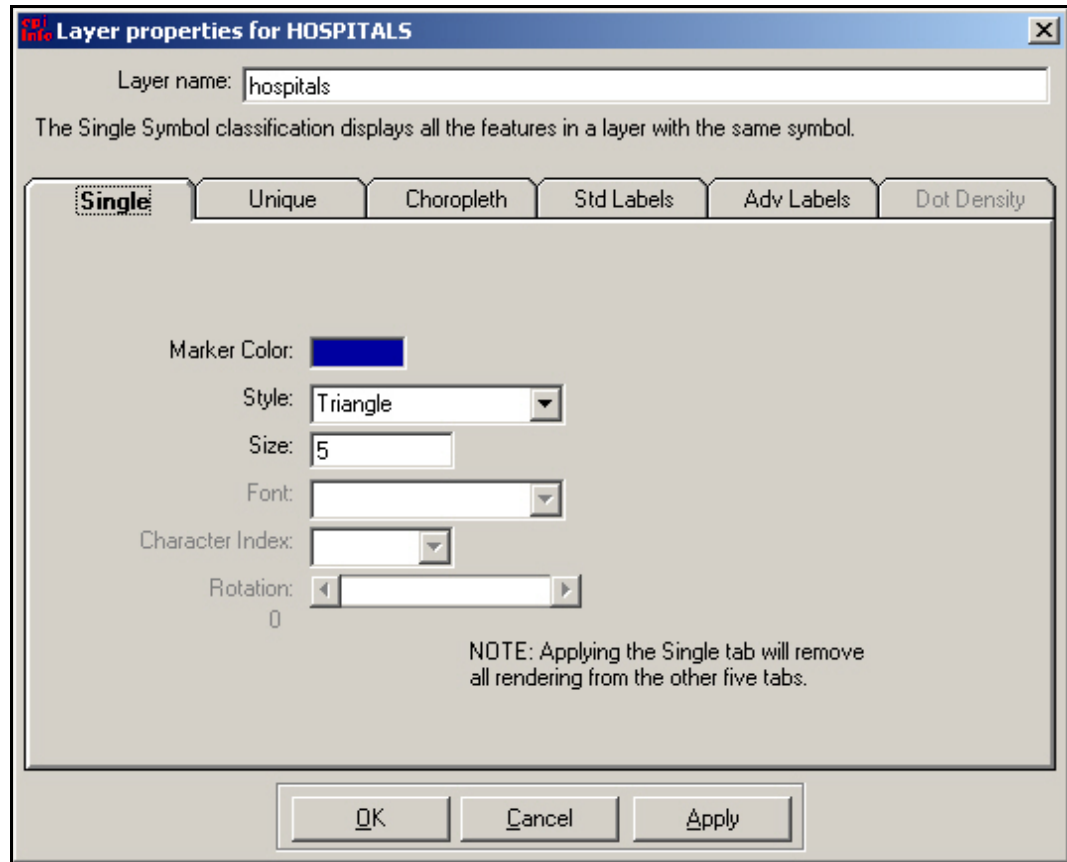
- Now select the ALBZCTA layer. Both School and Hospital points should be on the map.

### Edit Shapefile Points

The triangles that represent the hospitals are a little too small. Since the hospital points are on separate layer and are a separate shape file they can be edited.

1. From the Map Manager, highlight the Hospital layer.
2. Click **Properties**. The Layer Properties dialog box opens.
  - From the Single tab, you can edit the point size and color of the Hospital data points.



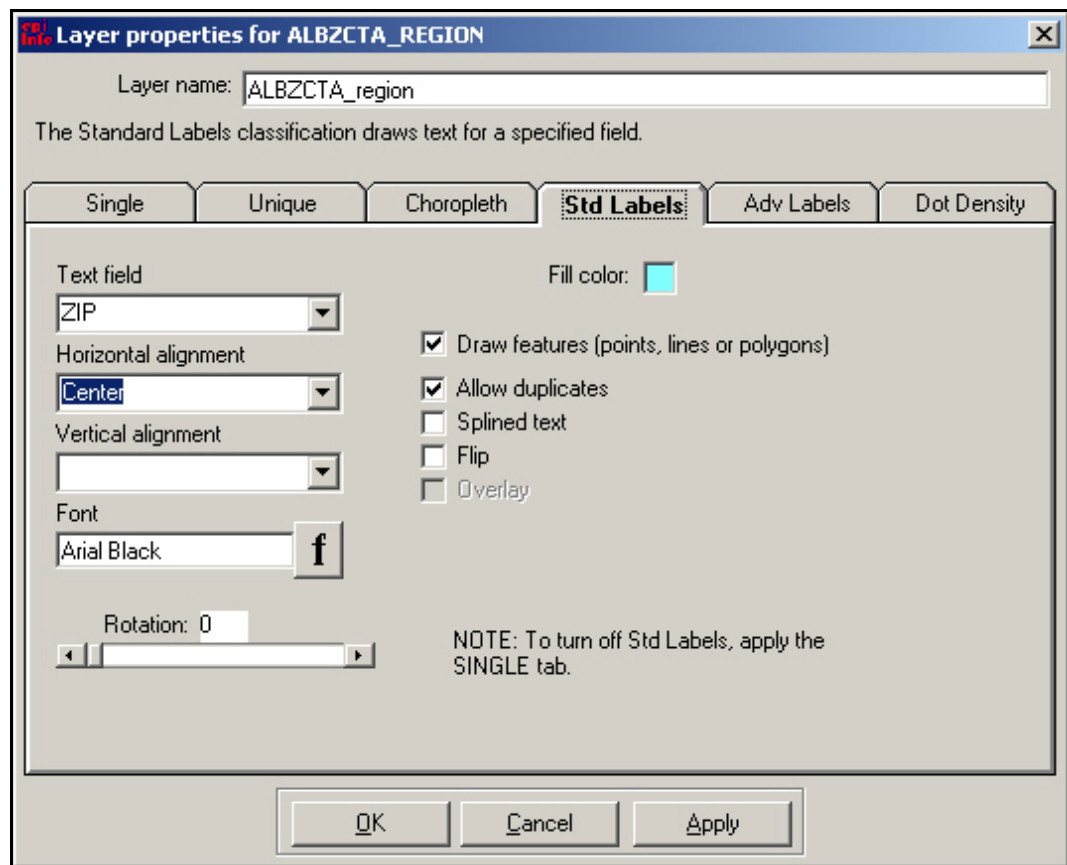



3. Highlight the number 5 in the size field.
4. Type in the number 12.
5. Change the Marker Color, if needed.
6. Click **Apply**.
7. Click **OK** to close the Layer Properties dialog box.
8. From the Map Manager, click the ALBZCTA layer to show all the points in your map.

## Apply Standard Labels to a Map

You can use the data associated with the map files to place labels on the map. The Standard Label classification draws text for a specified field. In this section, you want to add zip code labels to the map.

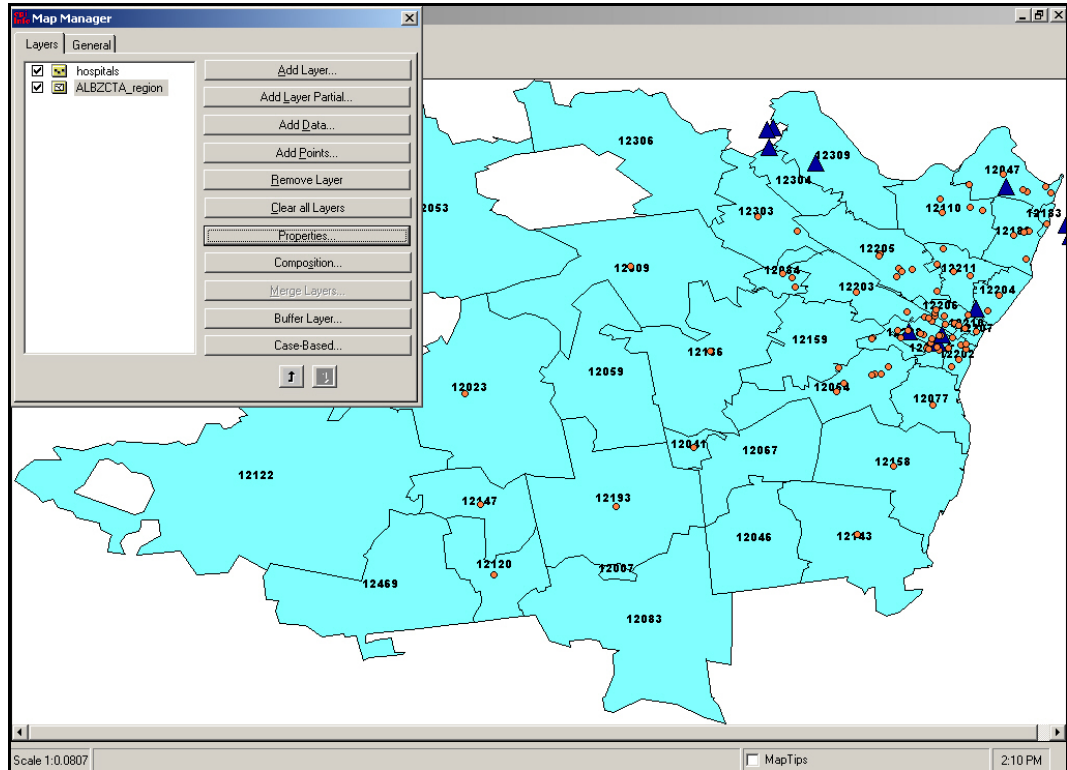
1. From the Map Manager, select the layer ALBZCTA.
2. Click **Properties**. The Layer Properties dialog box opens.
3. Click the tab Std Labels.



4. From the Text Field drop-down menu, select Zip.
5. From the Horizontal Alignment drop-down, select Center.
6. Click the  Font button. The Font dialog box opens.
7. From the Font section, select a new font.
8. From the Font Style section, select Regular.
9. From the Font Size section, select 8.

10. Click **OK** from the Font dialog box.
11. Click **Apply**.
12. Click **OK**.

Your map should similar to the following:

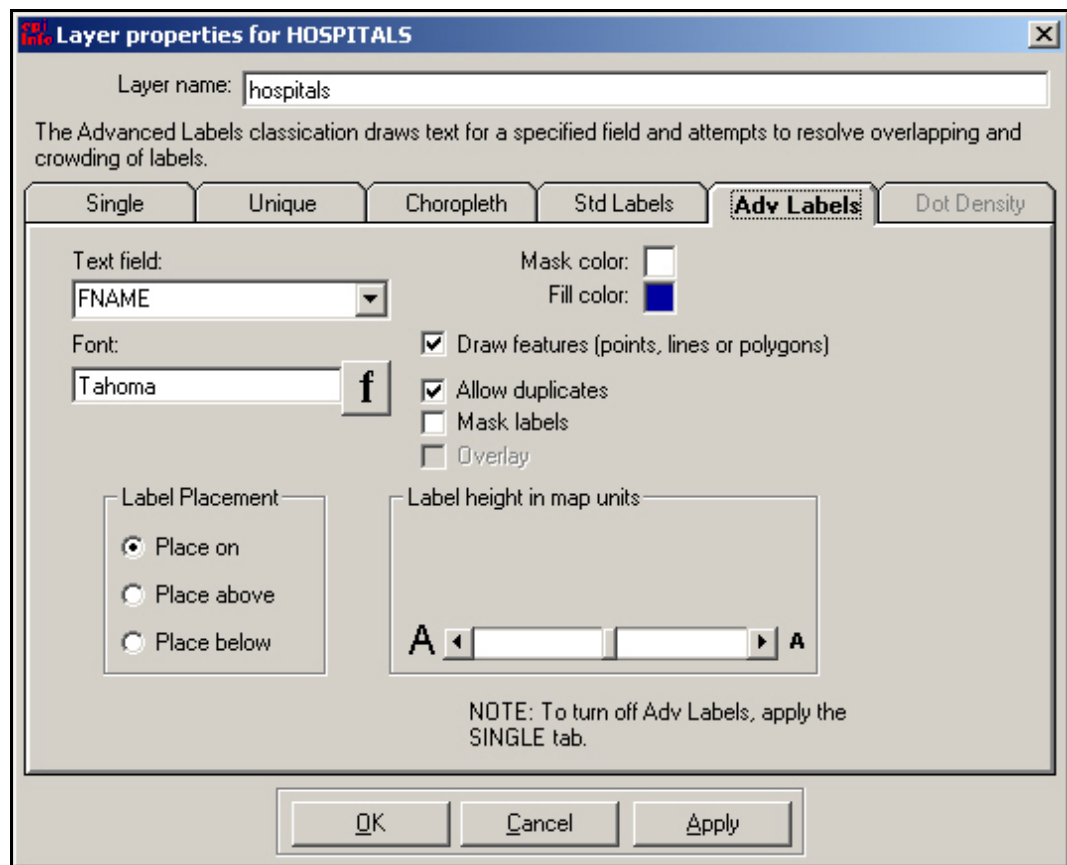



13. Remove the zip code labels by opening the Properties dialog box and clicking the Single tab.
14. Click **Apply**.
15. Click **OK**.

## Apply Advanced Labels to a Map

The Advanced Labels classification draws text for a specified field and attempts to resolve overlapping and crowding of labels. In this section, you will add the hospital point names to the map.

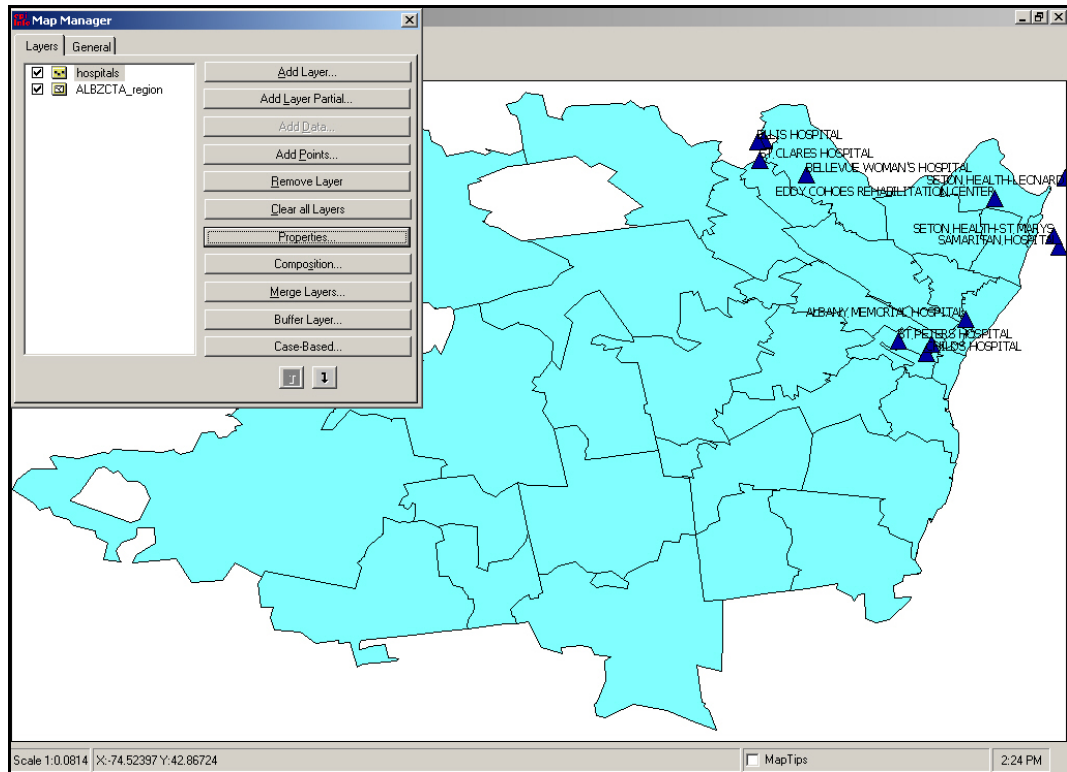
1. From the Map Manager, select the layer Hospitals.
2. Click **Properties**. The Layer Properties dialog box opens.
3. Click the **Adv Labels** tab.




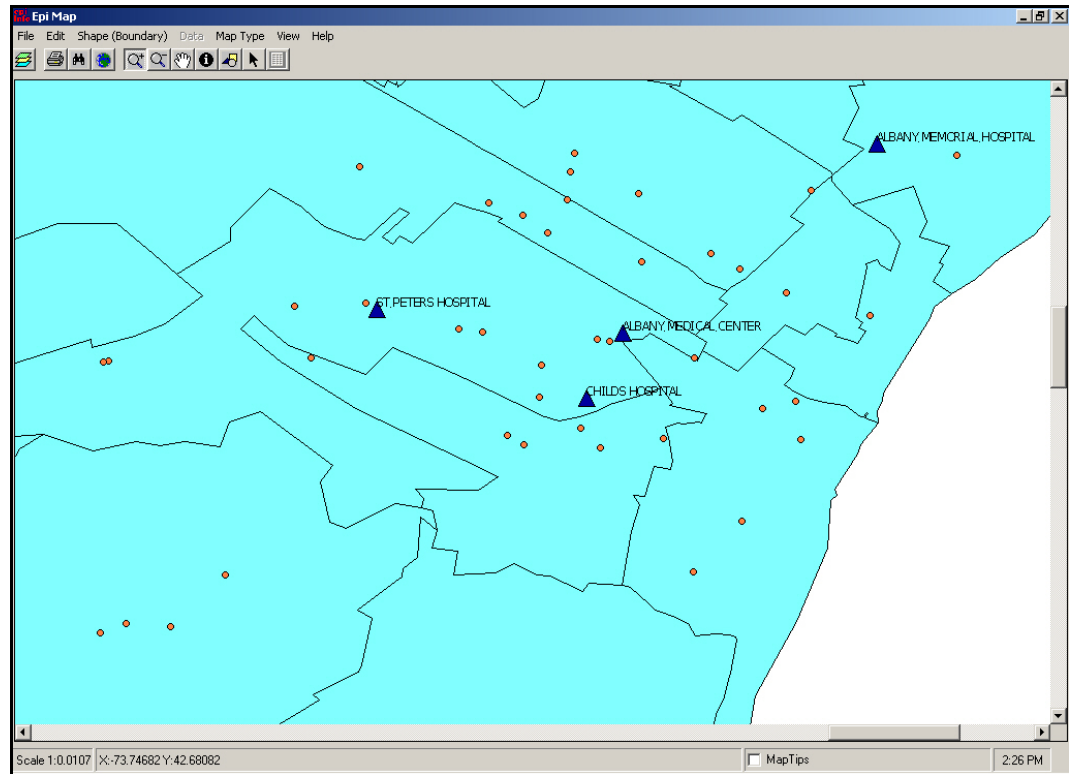
4. From the Text Field drop-down menu, select FNAME.
5. Click the  Font button. The Font dialog box opens.
6. From the Font section, select a new font.
7. From the Font Style section, select Regular.
8. From the Font Size section, select 8.
9. Click **OK** from the Font dialog box.


10. Click **Apply**.
11. Click **OK**.

Your map should look similar to the following:



12. Select the ALBZCTA layer to activate it.
13. Close the Map Manager.
14. Click the  Zoom button. The cursor turns into a magnifying glass.
15. Use the click and drag method to draw a square around the Albany Memorial Hospital region. A close-up view of the map appears.



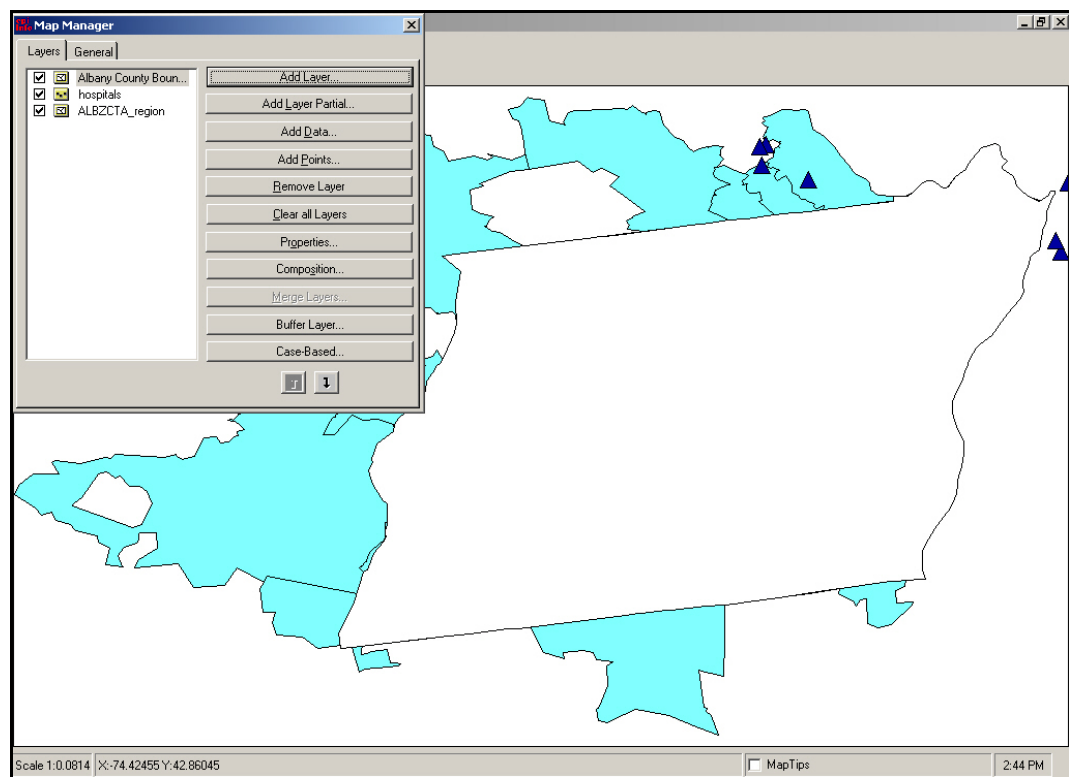
16. Click the  Pan button. The cursor turns into a hand.
17. Use the click and drag method to move around the map. Click inside the map and use the hand to move the map and locate point areas that fall outside the map region.
18. Use the **Zoom Out** button, or the **Full Extent** button, to return the map to the center of the workspace.
19. Open the Map Manager and select the Hospital layer.
20. Opening the Properties dialog box, and click the Single tab to remove the hospital labels by
21. Click **Apply**.
22. Click **OK**.

## Add a Shape Layer

The data and zip codes contained in the survey information crossed county lines. To see how this affects the locations of the schools in the survey, you can place the county shape over the region shape.

1. From the Map Manager, click **Add Layer**. The Add Layer window opens.
2. Select the file called Albany County Boundary\_region.SHP.
3. Click **Open**. The Albany shape appears on top of the region shape.

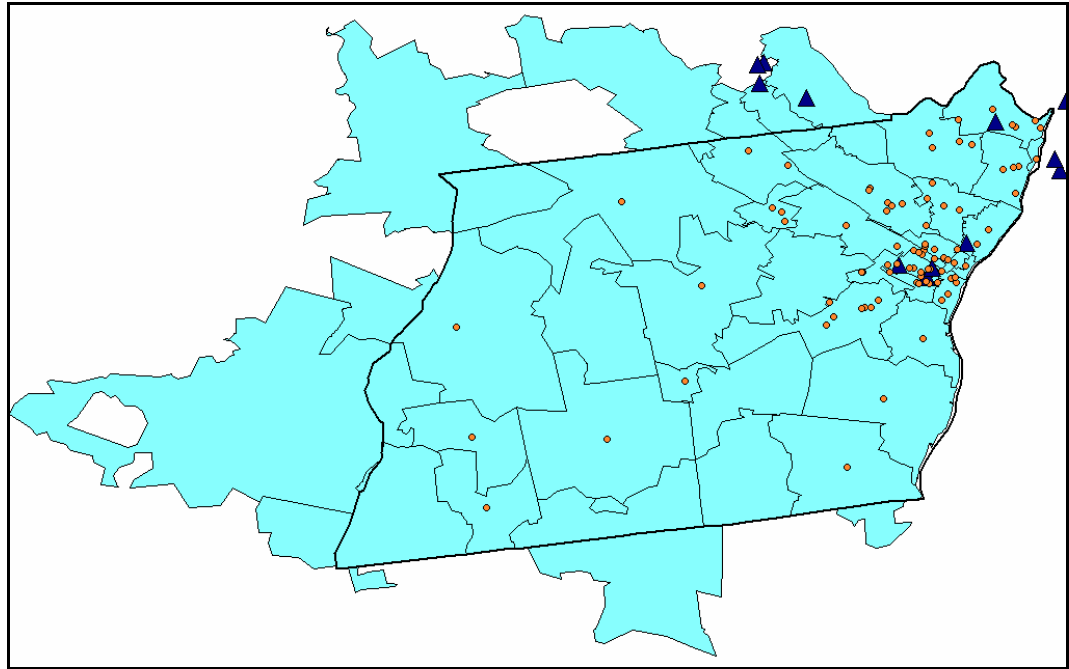
The map should look similar to the following:



4. Click **Properties**. The Layer Properties dialog box opens to the Single tab.
5. From the Style drop-down, select Transparent Fill.
6. In the Outline Width box, type 2.
7. Click **Apply**. The outline around the Albany Boundary file will be thicker while the inside of the shape appears transparent.
8. Click **OK**.
9. From the Map Manager, select the ALBZCTA layer to view all the points.

10. Close the Map Manager.
11. Turn on Map Tips.
12. Select Zip from the drop-down and hover over the region to see which zip codes cross county boundaries.

The map should look similar to the following:



### Save a Map as a Bitmap File

To save a map to be used in presentations or documents, you can save it as a bitmap file.

1. Select **File>Save as Bitmap File**. The Save As window opens.
2. Name the file *SchoolPointsMap*.
3. Click **Save**.
4. Close Epi Map.



## Skills Review

Create a new map based on the number of children with Bronchitis in the survey. Use the CountBronchitis table you created in the Lesson 8 Skills Review.

Open Epi Map.

Use the Map Manager to add the layer ALBZCTA\_region.shp to the workspace.

Use Add Data to plot the table called CountBronchitis. The table is located in the Asthma Survey 2005.mdb. This is one of the frequency tables you created in Lesson 8.

In the Select Relate Fields and Render Fields dialog box, select the options Zip, and Zip, and Count.

Click **Continue** at the Incomplete Join window. A choropleth map of the bronchitis count appears.

From the Map Manager, select Properties.

Select the Single tab.

Click **Apply**, to remove the choropleth settings.

Select the Unique tab. The Unique Values classification displays features by applying a symbol to each unique value for a specified field. In this example, it will display a unique color for each value of Count.

From the Field drop-down, select Count.

Click **Reset Legend**.

Select the Overlay checkbox.

Click **Reset Legend**.

Click **Apply**.

Select the Advanced Labels Tab.

From the Text Field drop-down, select Zip.

Use the Font options to make the font size 8.

Click **Apply**.

Click **OK**.

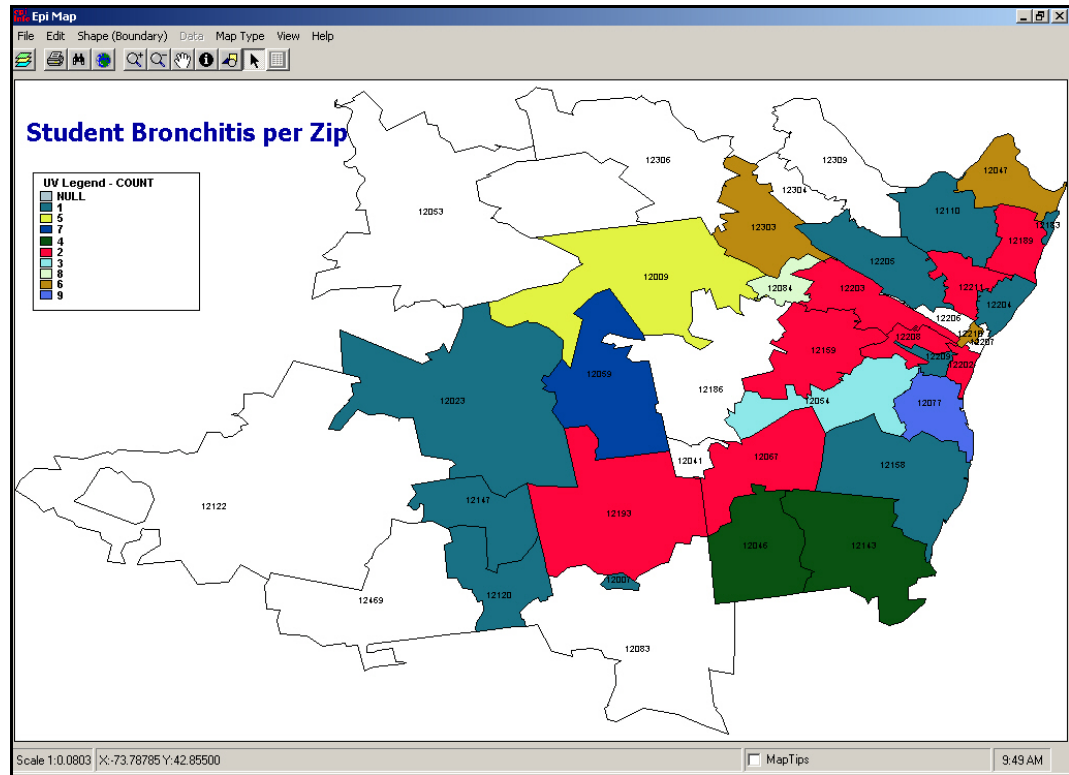
Close the Map Manager

Add the title Student Bronchitis per Zip.

Arrange the title and legend as you prefer.

Save the map as a .MAP file titled *BronchitisZips*.

Your map will look similar to the following:



Lesson Complete!

#### WHAT YOU LEARNED

---

How to

- Create a choropleth map.
- Create a case-based map.
- Save maps as .MAP and .BMP file types.
- Create a point map.
- Edit maps using the Properties dialog box.