

# Epi Report

## S U M M A R Y

---

This lesson is an introduction to using the Epi Report module. Use Epi Report to design and generate reports containing Analysis output. Reports can also contain system variables and graphics.

In this lesson, you will use data from the survey and output created in Lessons 1-9 to create a sample report that contains some of your findings. Your report will contain frequencies, missed days per condition, a line listing of conditions and missed days for a specified age, and the worst month pie chart created in Lesson 6 Epi Graph.

Using the data tables you created in Lesson 1-9 and the graphs and maps, you could create a comprehensive report to illustrate the need for asthma initiative funding in the region. For this lesson; however, you will only use a fraction of the data to learn the Epi Report module and create a basic report containing some of the findings.

To view a sample of the report you will be creating, you can open the Epi Report module, select **File>Open**, and view either My Epi Report2.EPT or WMonth Report.EPT.

Length of time to complete: 1.5 hours Beginner

### **Getting Started with Epi Report**

Overview of basic information to navigate Epi Report. Includes information on Report Elements that can be added to your reports and/or updated from Analysis output.

### **Insert a Report Object**

Use the Label and Drawing Tools options to insert a title and a line in your report. Learn to use the Properties dialog box, customize text, and insert a System Variable.

### **Read Data and Create Elements**

Use the output file Frequencies.XML to add frequency tables per condition to your report. Use the Properties dialog box to change table settings.

### **Aggregate Data**

Add aggregated sum and average of missed days of school data to your report Includes a Practice Lesson.

## **Create a Line Listing Group**

Use this element to access the Query Builder, and develop a line listing for children seven years of age who attended School A and who had asthma.

## **Insert an Image**

Use this element to insert the worst month pie graph you created in Lesson 6 Epi Graph.

## **Skills Review**

Series of five questions designed to reinforce skills learned in the Epi Report lesson.

### **BEFORE YOU BEGIN**

---

Complete Lesson 6 Analysis: Epi Graph.

Complete Lesson 7 Analysis: Exporting Files

### **WHAT YOU NEED**

---

Wmonth Pie Graph.BMP or WMONTH GRAPH.bmp

Frequencies.XML

SymptomsByAge.mdb or SymptomsByAgeSample.mdb

### **FIVE GOALS**

---

- Drag report elements on to the Epi Report workspace and to open the associated Properties dialog boxes.
- Open an XML file created as Analysis Output and select data tables for inclusion to a report.
- Insert aggregated and summarized data into a report.
- Use the Query Builder to design a customized line listing for your report.
- Insert a graphic created in another program as part of your report.

## Getting Started with Epi Report

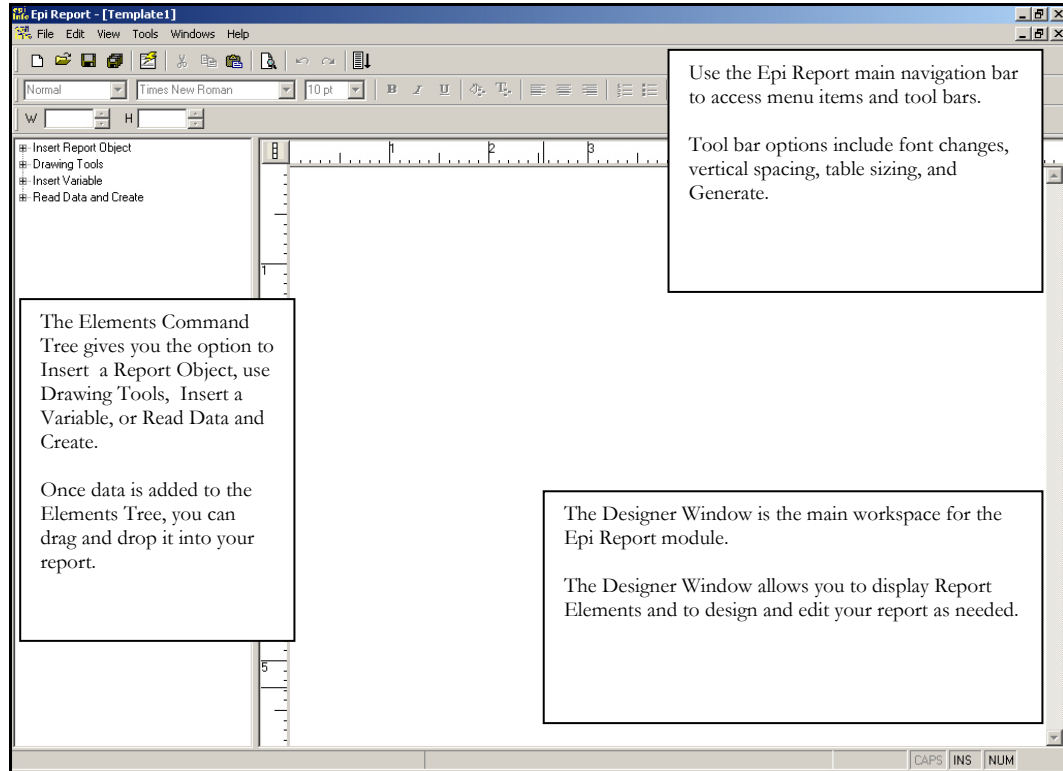
The Epi Report tool is used to design and generate reports. Reports can contain elements bound to data sources. The Epi Report module uses the .XML files generated by Analysis when output is created. Report elements can include Analysis .XML files, records lists, cell replacement, groups, and aggregate data. Data analysis, through pivot tables, is also provided.

Reports are saved in the Epi Reports format with the extension of .EPT. When a report is generated, the corresponding data source (which is an XML file) is accessed. The latest information from the XML is displayed to the user during report generation. The user can select individual data elements to appear in the report. When generating reports, queries are applied to the specified data sources, and information is extracted and displayed. You can include multiple tables, apply conditional filters, group data, and apply various aggregate functions on the extracted data.

## The Epi Report Workspace

Click **Create Reports** or select **Programs>Create Reports** to open the Epi Report module.

This is an example of the Epi Report Workspace:



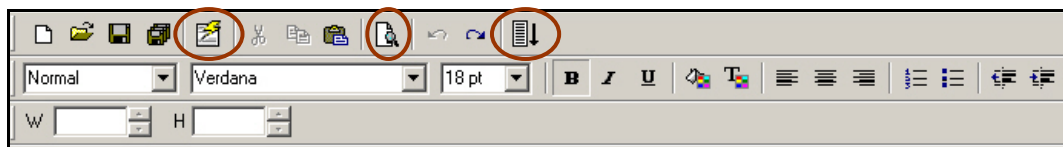
## Navigating Epi Report

Elements added to a report are arranged in the Designer Window. Use the Epi Report main navigation menu and the tool bar to edit text and resize tables. Use the Elements Command Tree to insert data from Analysis, graphics, and text objects.

### Navigation and Tool Bars

Use the **File**, **Edit**, **View**, **Tools**, **Windows**, and **Help** menus to complete standard tasks associated with creating a report. This includes New, Save, Print Preview, Generate Report, Undo, Copy, Paste, Zoom, Pagination, and Reload Analysis XML.

Use the Tool Bar to customize text and tables, **Generate Reports**, **Preview the Template**, and **Add Vertical Space** to your report.

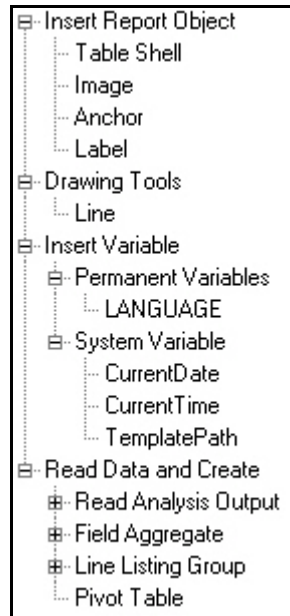


When text is selected in the report, the text formatting tool bar activates. Use these options to change font style, size, appearance, color, and location. Numbering and bullet options are also available. Use the W and H arrow boxes to resize tables and cells to specific sizes rather than using the corner drag method.

### Elements Command Tree

The Elements Command Tree provides you with the menu options to add data elements, text, and graphics to a report. The tree is divided into four types of elements. Clicking one of the elements will activate a pop-up option menu where you can select an output type (usually an .MDB), or will allow you to drag the selected element onto the workspace and customize its appearance.

Click the plus box next to each command to see all the available options for each heading. For example, open the Insert Report Object heading by clicking the plus box. Under Insert Report Object, you have the option to add a Table Shell, Image, Anchor, or Label to your report. Objects and elements are added to a report using the drag and drop method. Objects and elements are customized using the Properties dialog box associated with the object.



- Insert Report Objects includes Table Shell, Image, Anchor, and Label. Use Table Shell to drag an empty table into the workspace. Image and Label allow you to place text or graphics in the workspace. Anchor allows you to insert an HTML link.
- Drawing Tools includes Line. Use Line to insert a line element as a graphic. Lines can be resized and customized with new colors, styles, or widths.
- Insert Variable includes Permanent or System type. Use these elements to insert the date or time as a variable in your report.
- Read Data and Create includes Read Analysis Output, Field Aggregate, Line Listing Groups, and Pivot Table. Using these options allows you to select a project (.MDB) and to choose an output or routeout file and to drag and drop data into your report.

## Report Data

Types of output data you can add to reports using the Elements Command Tree.

### Read Analysis Output

Use the Read Analysis Output command to include information from Analysis .XML files. Each XML file selected is added under the Read Analysis Output menu in the tree. Multiple .XML files can be opened. Data is added to the Designer window using the drag and drop method. Each time the report is generated, the output files are updated to reflect changes made in Analysis.

### Field Aggregates

Aggregate functions (count, min, max, etc) can be applied for individual columns in the database and the corresponding information can be included in the report. Aggregates are calculated during report generation. Conditional filters can also be applied using the Query Builder window. All formatting options are available.

### Line Listing Group

Users can logically group related data using the grouping concept. A record-list is based on a database query. Use the Query Builder for Line Listing Groups to select items that will appear in the listing. If no fields are selected, a simple record list is created. If a group field is selected, the records displayed appear as part of the selected group.

Once the query is formed, it is added to the Line Listing Group menu inside the Element Command Tree. The Line Listing can then be selected, dragged, and dropped into the report. Once added it can be customized with headers and footers by inserting rows at the top and the bottom of the table listing. Formatting options like color, size, etc. can be selected for the items in the table. The formatting options are applied during the generation of a report.

### Pivot Table



Pivot tables can be embedded into reports for data analysis. Use the Query Builder to select criteria to include in the pivot table.

## Insert a Label

Use the Insert Report Object menu to create a title for this page of the report. The Label option can be used to insert any kind of text into a report.

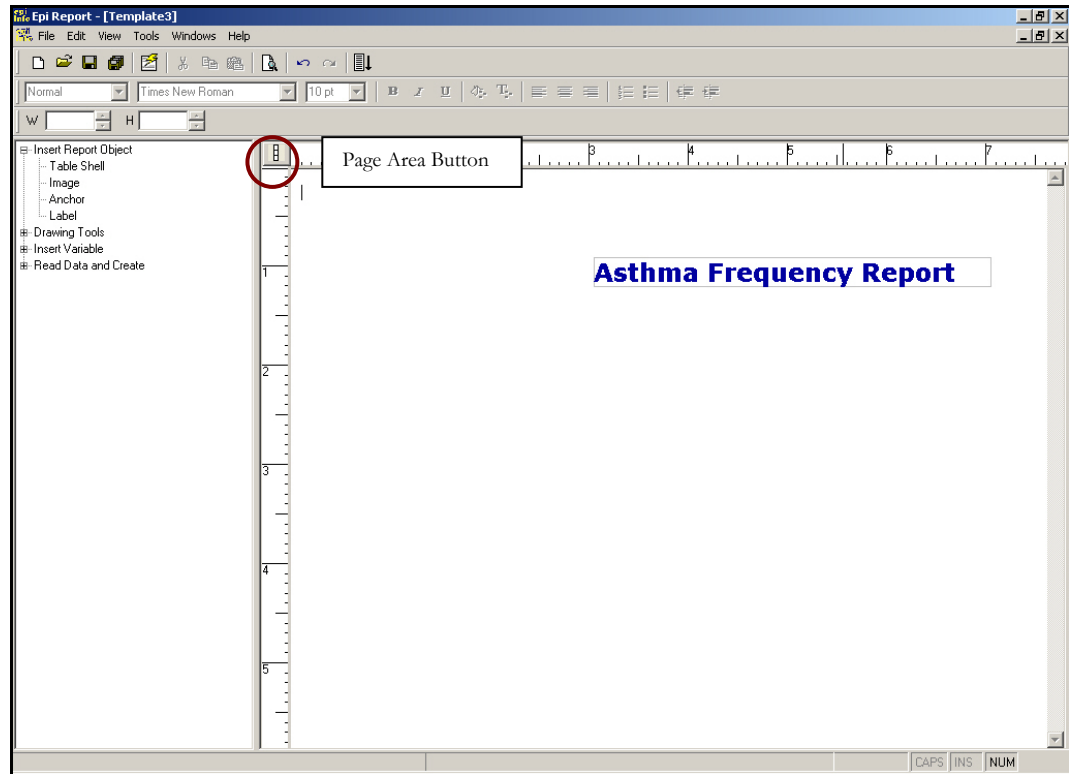
1. From the Epi Info™ main page, select **File>Create Reports** or click **Create Reports**. Epi Report opens. The workspace opens to a blank template.
2. Click the plus box next to Insert Report Object in the Element Command Tree. The box expands to show the options available.
3. Left click and hold the option **Label**.
4. Drag and drop the word Label into the Designer window. This will be the title of your report.
5. Highlight select the word Label by using your mouse to left click and drag over the word.
6. Use your keyboard to type over the word Label and enter a title *Asthma Frequency Report*.
7. Highlight the title text and use the Tool Bar to change the font style and size to one of your choosing.




8. Click the Bold style  button.
9. Use the Text color  button to select a new color.
10. Deselect the text by clicking anywhere inside the blank workspace area.


Your workspace should look similar to the following:

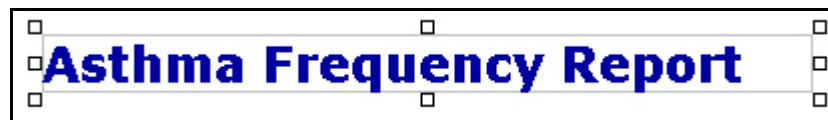




- To see the workspace area in relation to the printed page, click the **Page Area**  button. A blue dashed line appears around the workspace showing you where page breaks for printing will appear. Click **Page Area** again to turn the option off. You cannot edit the report while the Page Area feature is active. Use the Page Area option as you add items to the page to ensure that your report elements are inside the printable page area and to center items in relation to each other and the printable page area.

11. Select the title text you added to the page.

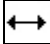
- Use the mouse cursor to hover over the text until it turns into a black cross arrow  icon, then click to select the text. Four white box handles will appear around the text to show that it is selected. Text and tables can be resized by clicking and dragging any of the white handles that surround them when they are selected.

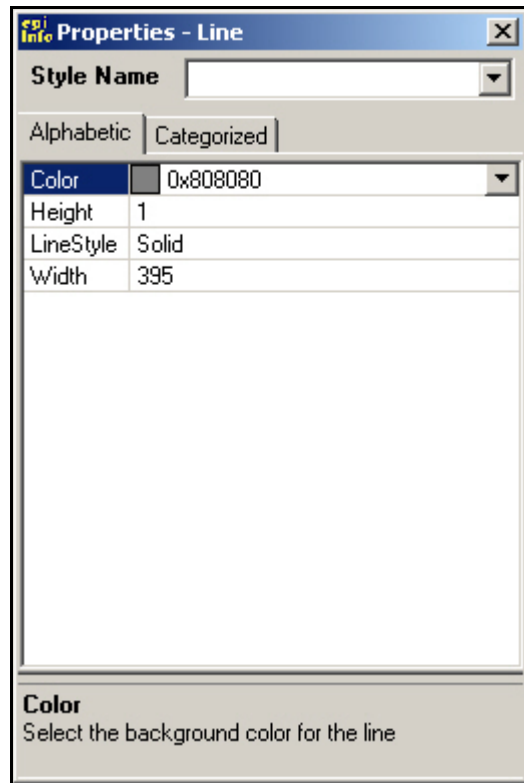


12. Move the text to the top center of your workspace by hovering over the text until you see the black cross arrow icon, left click, hold, and drag the title text to the new position on the page.

## Insert a Line

Use the Drawing Tools menu to drag and drop a Line into your report. Lines can be resized and edited to act as dividers between sets of information.

1. Click the plus box next to Drawing Tools in the Element Command Tree. The box expands to show the options available.
2. Select Line and drag it onto the page. The line should have the white bounding box selectors surrounding it.
3. Click and drag the line under the title text.
4. Resize the line by hovering over the white selection handles. The cursor changes to a horizontal arrow  line.
5. Click and drag the line to resize it. You may have to do this on each end of the line.
6. While the line is selected, right click on the line to open the pop-up menu and select Properties. The Properties- Line dialog box opens.
  - Notice that the line color is gray.




7. Click the drop-down box in the Color field. The color palette appears.

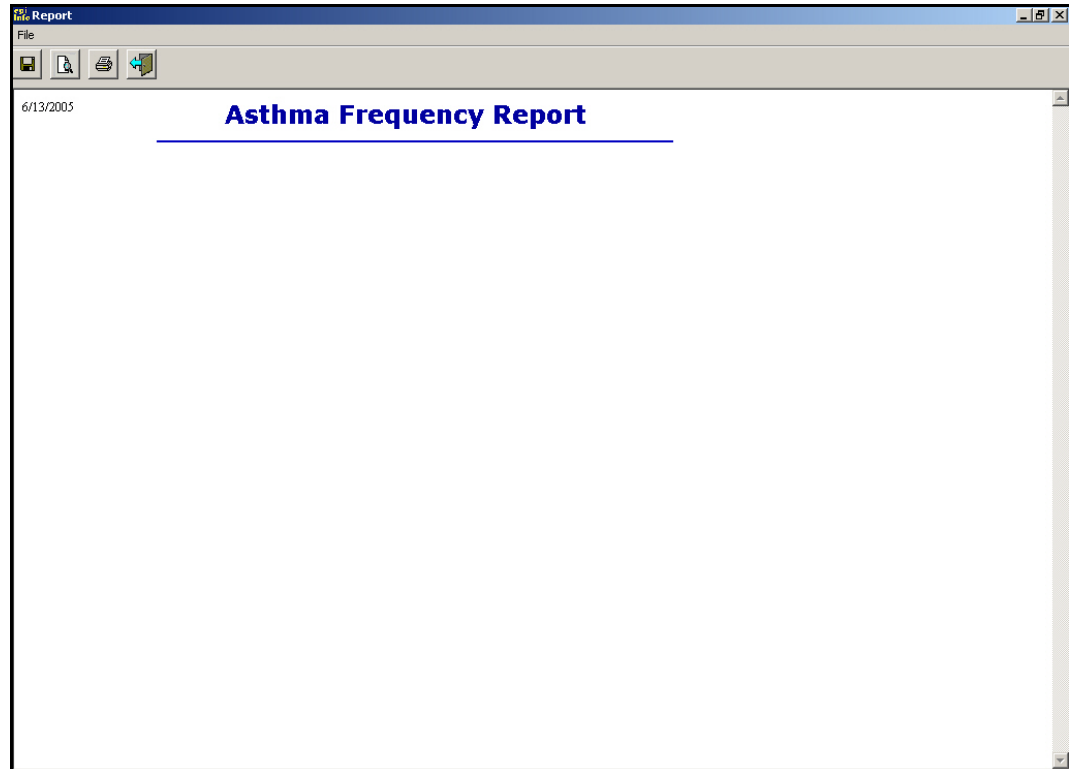
8. Click a color block to select it as the line color.
9. Click **OK**. The line color changes.
10. Click the Height field.
11. Highlight the number 1 and type a 2 over it. This makes the line 2 pixels in height.
12. Press the Enter key on your keyboard to apply the change.
13. Click the Close **X** to exit the Properties- Line dialog box.

## Insert a Variable

Use the Insert Variable menu to place a date, time, or file path inside your report.

1. Click the plus box next to Insert Variable in the Element Command Tree. The box expands to show the options available.
2. Click the plus box next to System Variable to expand the menu.
3. Click and drag the variable CurrentDate to the upper left hand corner of the report page. The date variable updates each time you generate the report to reflect the current date.
4. From the Tool Bar, click the **Generate**  icon. The generated report appears in a new window.

The report page should look similar to the following:

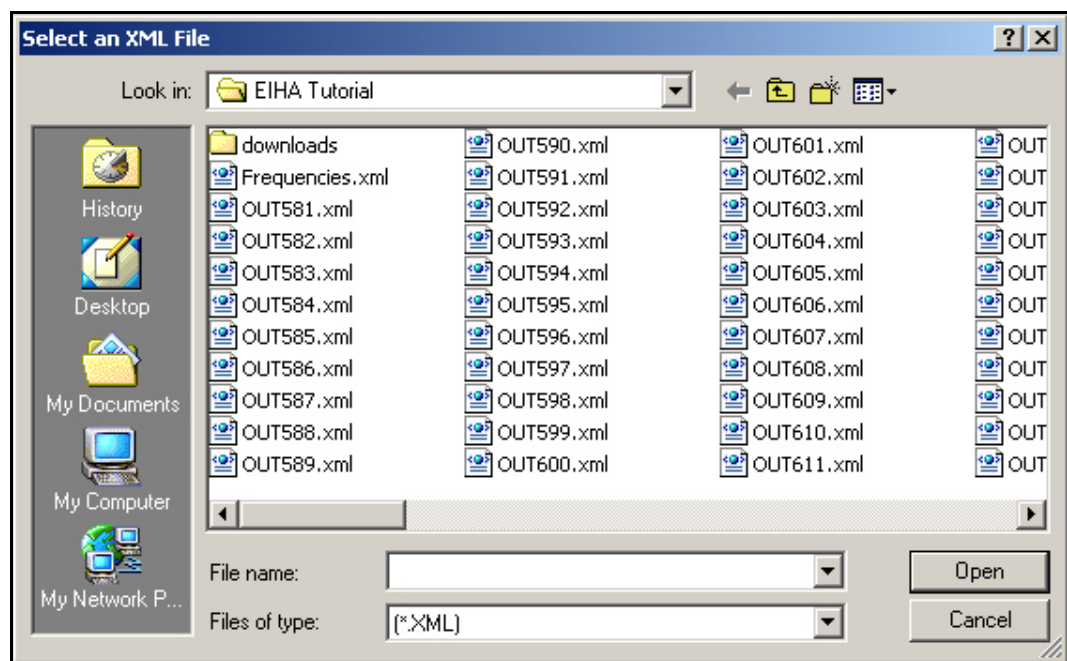


5. Click the **Back** icon to return to the workspace.
6. Select **File>Save As**. The Save Epi Report dialog box opens.
7. In the File Name field, type *My Epi Report*.
8. Click **Save**.

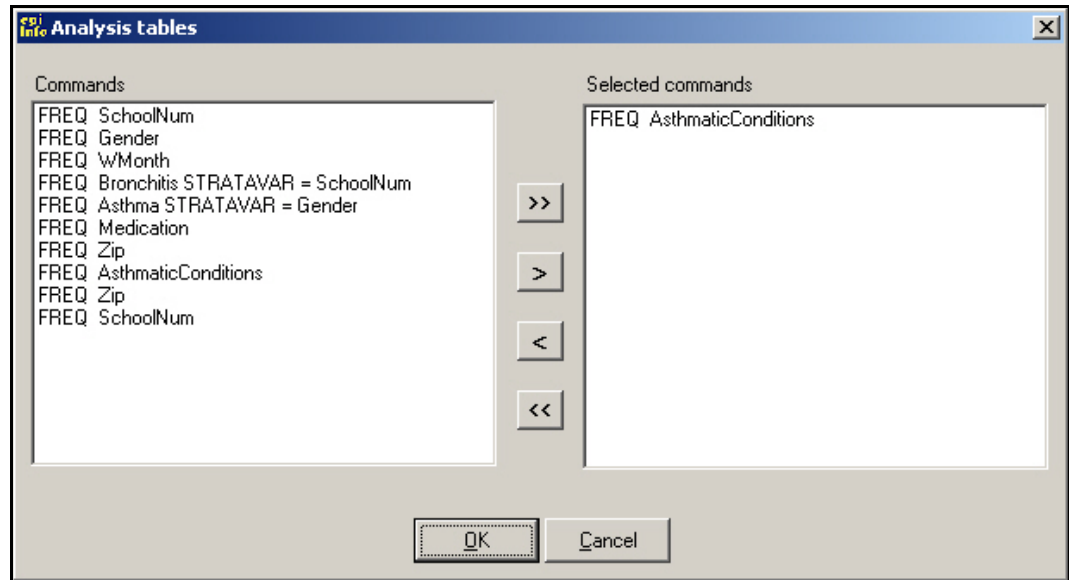
## Using Analysis Data

You can include output created in Analysis in your report data. Information added to the report and updated in Analysis also updates when you generate the report with Epi Report. You want to include frequency data for asthmatic conditions from the survey in the report.

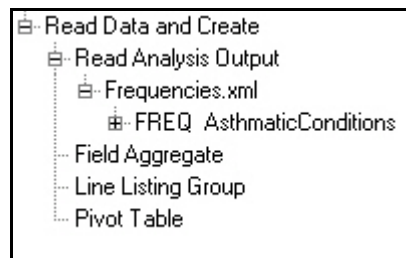
1. Click the plus box next to Read Data and Create in the Element Command Tree. The box expands to show the options available.
  - The Read Data and Create options allow you to add data created in Analysis to your reports. Data can be updated in your report as changes are made in the Analysis module.
2. Click **Read Analysis Output**. The Select an XML File dialog box opens.
3. Locate the EIHA Tutorial folder. Notice the Output.XML files in the EIHA folder. These files were created when the Output.HTML files were created and contain the same results.



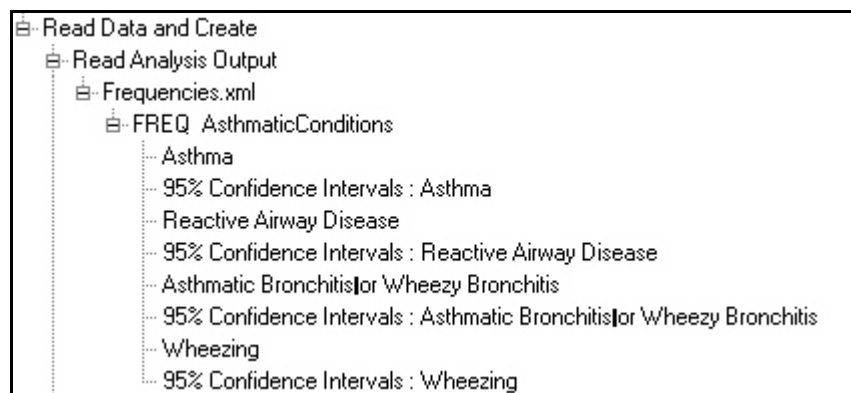
4. Select the .XML file called Frequencies. This file was created by using the ROUTEOUT command in Analysis.
5. Click **Open**. The Analysis Tables dialog box opens.
6. Select the table **FREQ Asthmatic Conditions**. You may have to scroll through the list to locate the proper table.
7. Click the single arrow pointing to the Selected Commands field.



8. Click **OK**. The Read Data and Create menu updates to show that the information you selected from the XML file is available for use in your report.



9. Click the plus box next to the menu item FREQ Asthmatic Conditions. The menu expands to show all the table results in your .XML file.



- You are going to drag and drop the table results for the four symptoms onto the report workspace.
10. Select, drag, and drop Asthma, Asthmatic Bronchitis, Reactive Airway Disease, and Wheezing onto the report individually.

- Do not drag the 95% confidence intervals.

The workspace should look similar to the following:

The screenshot shows the Epi Report software interface. The main workspace displays a report titled "Asthma Frequency Report". The report contains four tables, each with columns for Frequency, Percent, and Cum Percent. The tables are as follows:

Asthma			
Asthma	Frequency	Percent	Cum Percent
(+)	91	11.375	11.375
(-)	709	88.625	100
Total	800	100	100

Asthmatic Bronchitis or Wheezy Bronchitis			
Asthmatic Bronchitis or Wheezy Bronchitis	Frequency	Percent	Cum Percent
(+)	86	10.75	10.75
(-)	714	89.25	100
Total	800	100	100

Reactive Airway Disease			
Reactive Airway Disease	Frequency	Percent	Cum Percent
(+)	93	11.625	11.625
(-)	707	88.375	100
Total	800	100	100

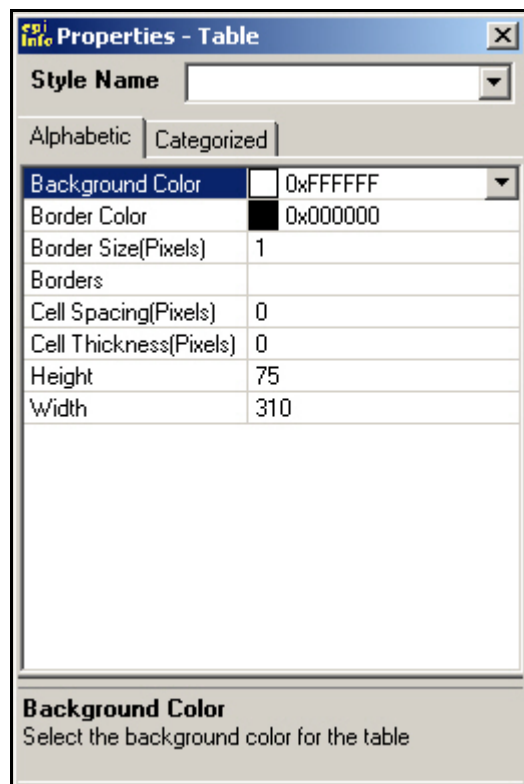
  

Wheezing			
Wheezing	Frequency	Percent	Cum Percent
(+)	99	12.375	12.375
(-)	701	87.625	100
Total	800	100	100

## Editing Report Elements


Report elements can be edited using the Properties dialog box for the selected element type.

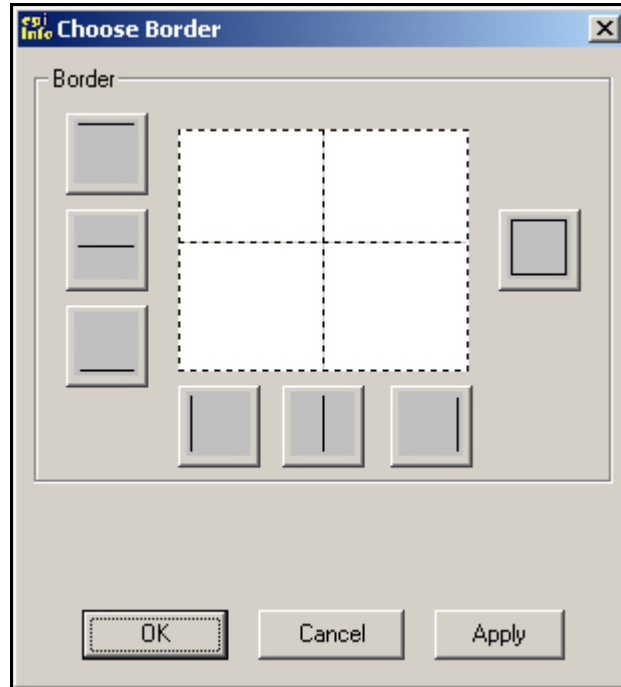
1. Select the Asthma table.
  - Selecting tables works the same way as selecting lines or text. Hover until you see the black cross arrows and then click. The table will be surrounded by white bounding boxes.
  - De-select a table by clicking anywhere inside the workspace.
  - Resize a table by click dragging the corners of the boxes.
2. Right click the selected table. The table menu opens.
3. Select Properties. The Properties- Table dialog box opens.



- Table elements can also be edited separately. For example, if you place your cursor inside a cell, you can edit properties for the row, column, or cell where your cursor is placed. In each case, the title of the Properties dialog box changes to indicate which part of the table you are editing.
- When you drag a table into your report, the table borders appear in the workspace, but not in the print preview or on the printed page. Borders must be applied to appear as part of the report.



4. Click inside the Borders field of the Properties-Table dialog box. A Browse button appears in the field.
5. Click the **Browse**  button. The Choose Border dialog box opens.



6. Click each of the three horizontal borderlines.
7. Click each of the three vertical borderlines.
8. Click **Apply**.
9. Click **OK**. The selected table should have a visible black outline.
10. Click the Border Color field. A drop-down menu appears in the Border Color field.
11. Use the drop-down color palette to select a new color for the table border.
12. Click **OK**.
13. Select the Cell Spacing (Pixels) field.
14. Highlight the number 0 and type the number 1. Press the Enter key on your keyboard to apply the cell spacing to your table.

## Practice

Select each of the tables in your workspace individually and apply the same edits to each of them. This gives the tables in your project a consistent look.

Add a Border.

Change the Border Color.

Add Cell Spacing.

Your workspace should look similar to the following:

The screenshot shows the Epi Report software interface. The main window displays a report titled "Asthma Frequency Report" with a blue header. Below the header are four tables, each with a blue border and blue text. The left sidebar shows the "Properties - Table" window, which is currently set to "Categorized" and shows various formatting options.

**Table 1: Asthma**

	Frequency	Percent	Cum Percent
(+)	91	11.375	11.375
(-)	709	88.625	100
Total	800	100	100

**Table 2: Asthmatic Bronchitis or Wheezy Bronchitis**

	Frequency	Percent	Cum Percent
(+)	86	10.75	10.75
(-)	714	89.25	100
Total	800	100	100

**Table 3: Reactive Airway Disease**

	Frequency	Percent	Cum Percent
(+)	93	11.625	11.625
(-)	707	88.375	100
Total	800	100	100

**Table 4: Wheezing**

	Frequency	Percent	Cum Percent
(+)	99	12.375	12.375
(-)	701	87.625	100
Total	800	100	100

**Properties - Table Window:**


- Style Name: [Dropdown]
- Background Color: 0xFFFFFFFF
- Border Color: 0xC00000
- Border Size(Pixels): 1
- Cell Spacing(Pixels): 1
- Cell Thickness(Pixels): 0
- Height: 75
- Width: 232

## Change Table Fonts

In this section, you will select the text inside each table and choose a new font.

1. Left click and drag to highlight the text inside the Asthma table.

Asthma			
Asthma	Frequency	Percent	Cum Percent
(+)	91	11.375	11.375
(-)	709	88.625	100
Total	800	100	100

2. From the Tool Bar, use the Font drop-down to select a new font.
  - Verdana, Arial, or Tahoma are good choices for this report.
  - Leave the Font size at 10.
  - If you need to move a table, select it, and use the click and drag method.
  - If you need to add more space at the bottom of your page, click the **Vertical Space**  button.
3. Change the font in each of your tables to match.


## Resize Tables

Tables and report elements can be resized by click dragging the bounding boxes, using the Tool Bar options, or by using the Properties dialog box.

1. Select the Asthmatic Bronchitis table.
2. Right click and select Properties from the menu. The Properties- Table dialog box opens.
  - You can see the size of the table in the Tool Bar or the Properties-Table dialog box.

W	418	H	75
---	-----	---	----

Height	75
Width	418

3. Change the Width of the table to *500*.
4. Press Enter on your keyboard to apply the changes.
5. Change the Height of the table to *80*.
6. Press Enter on your keyboard to apply the changes.
7. Change the Width and Height of each table in the report.
8. Re-position the tables as needed.
9. **Save** the report.
10. Click **Generate** to view the report.
11. From the generated view, click **Print Preview**  to see how the printed report will look.

The report should look similar to the following:

Print Preview

Print... Page 1 of 1 100% Help Close

6/14/2005 Page 1 of 1

### Asthma Frequency Report

Asthma			
Asthma	Frequency	Percent	Cum Percent
Yes	91	11.375	11.375
No	709	88.625	100
Total	800	100	100

Asthmatic Bronchitis or Wheezy Bronchitis			
Asthmatic Bronchitis or Wheezy Bronchitis	Frequency	Percent	Cum Percent
Yes	86	10.75	10.75
No	714	89.25	100
Total	800	100	100

Reactive Airway Disease			
Reactive Airway Disease	Frequency	Percent	Cum Percent
Yes	93	11.625	11.625
No	707	88.375	100
Total	800	100	100

Wheezing			
Wheezing	Frequency	Percent	Cum Percent
Yes	99	12.375	12.375
No	701	87.625	100
Total	800	100	100

Start | Inbo... | Epi Info | Epi Report ... | Lesson 10 ... | FullShot 6... | 4:34 PM

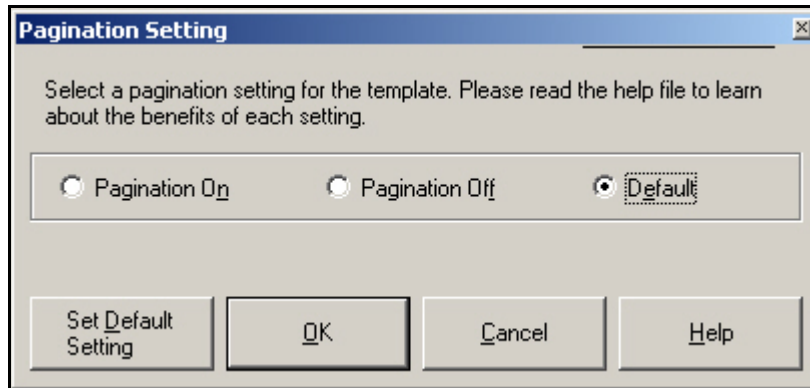
12. Click **Close** to return to the generate window.

13. Click **Back** to return to the workspace.

## Insert a New Page

You want to create a new page that contains data on county absenteeism. In this section, you will insert a page break after the frequency tables. In order to insert pages, you must have the Pagination Settings activated in the report.

1. Use the Enter key, Vertical Space button, or mouse to move your cursor underneath the tables in the current report.
2. Select **Tools>Pagination**. The Pagination Setting dialog box opens.



3. Click the Pagination On radio button.
4. Click **OK**.
5. Place the cursor where you want a page break to occur.
6. Right click to activate the pop-up menu.
7. Select **Insert Page Break**. A blue dotted line appears.
8. Move your cursor underneath the blue line. This is the top of page two.

## Insert a Table Shell

In this section, you will add a blank table to your report and format the table so that aggregated data can be added to cells.

1. Open the Insert Report Object menu.
2. Select and drag a Label under the blue page break line.
3. Highlight select the Label and title it *County Absenteeism*.
4. Select the text and use the Tool Bar to select a new Font, Size 18, Bold, and Underlined.
5. From the Insert Report Object menu, select **Table Shell**.
6. Click and drag a Table Shell onto the report. Place it under the new title so it appears on the new page.
7. Click in the first table cell and type the text *Sum of Missed Days in the County*.
8. Click inside the second cell and type the text *Average of Missed Days per Student*.
9. Right click in the third cell/column and from the menu select **Delete Col**.
10. Right click in the third row and from the menu select **Delete Row**.

Sum of Missed Days in the County	Average of Missed Days per Student

11. Select the table.
12. Resize the table so that the text appears without the wrap.
  - Use the corner drag method, the Properties-Table dialog box, or the Tool Bar options.

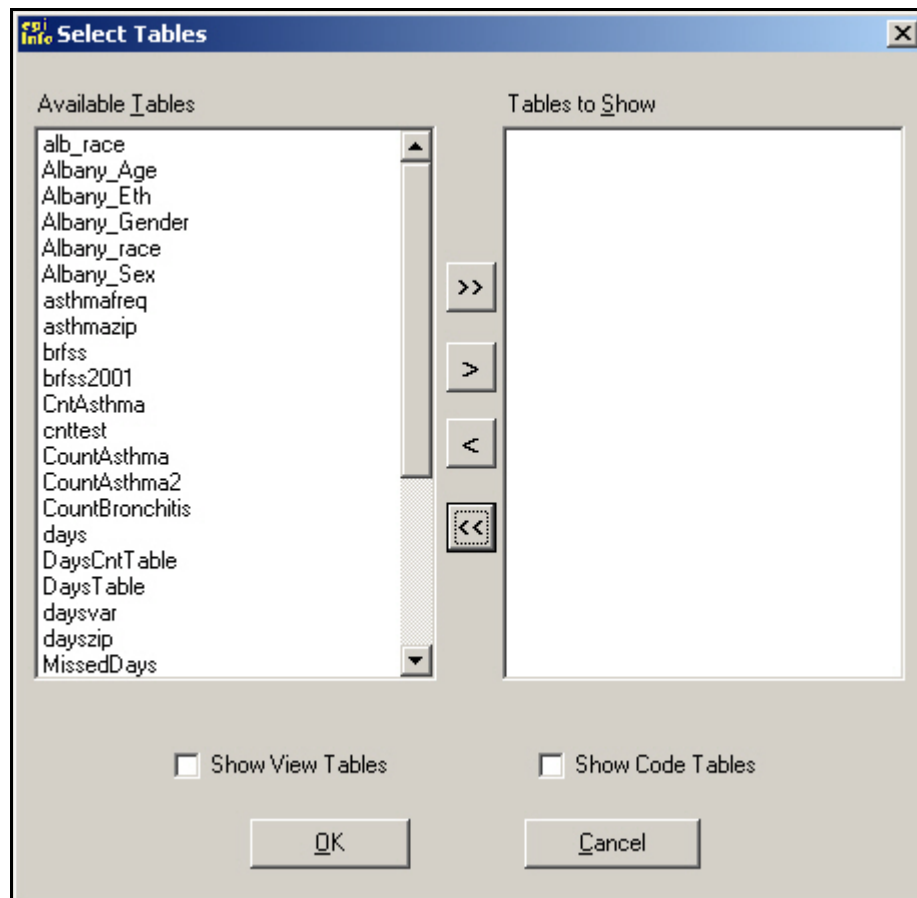
Your table should look similar to the following:

Sum of Missed Days in the County	Average of Missed Days per Student

## Insert Aggregate Data

Aggregate or summarized data can be included in reports. Aggregate types available in Epi Report include count, minimum, maximum, percent, sum, and average. In the asthma report, you want to include the total and average numbers of missed days in the county due to breathing problems.

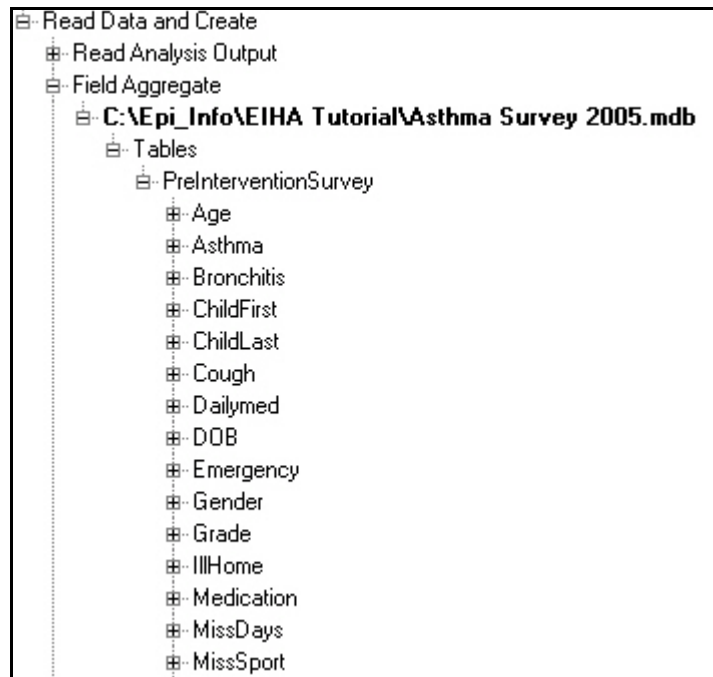
1. From the Elements Command Tree open the Read Data and Create menu.
2. Click **Field Aggregate**. A pop-up menu appears with the option to select ODBC or MDB.
3. Select MDB. The Select Access Database window opens.
4. Locate the EIHA Tutorial folder and select Asthma Final.MDB.
5. Click **Open**. The Select Tables dialog box opens.



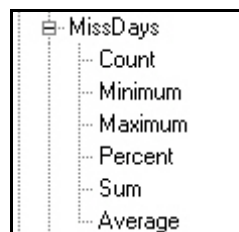
6. From the Available Tables field, scroll through the list to find the table called PreInterventionSurvey.
7. Select the table.



8. Click the single arrow button. The table appears in the Tables to Show field.
9. Click **OK**.
10. Click the plus box next to PreInterventionSurvey to view the available variables.



11. From the PreInterventionSurvey list of variables, click the plus sign next to MissDays. The list of available aggregates appears.



12. Select **Sum** and drag it to the first cell, under the heading Sum of Missed Days in the County.
13. Select **Average** and drag it to the second cell under the heading Average of Missed Days per Student.

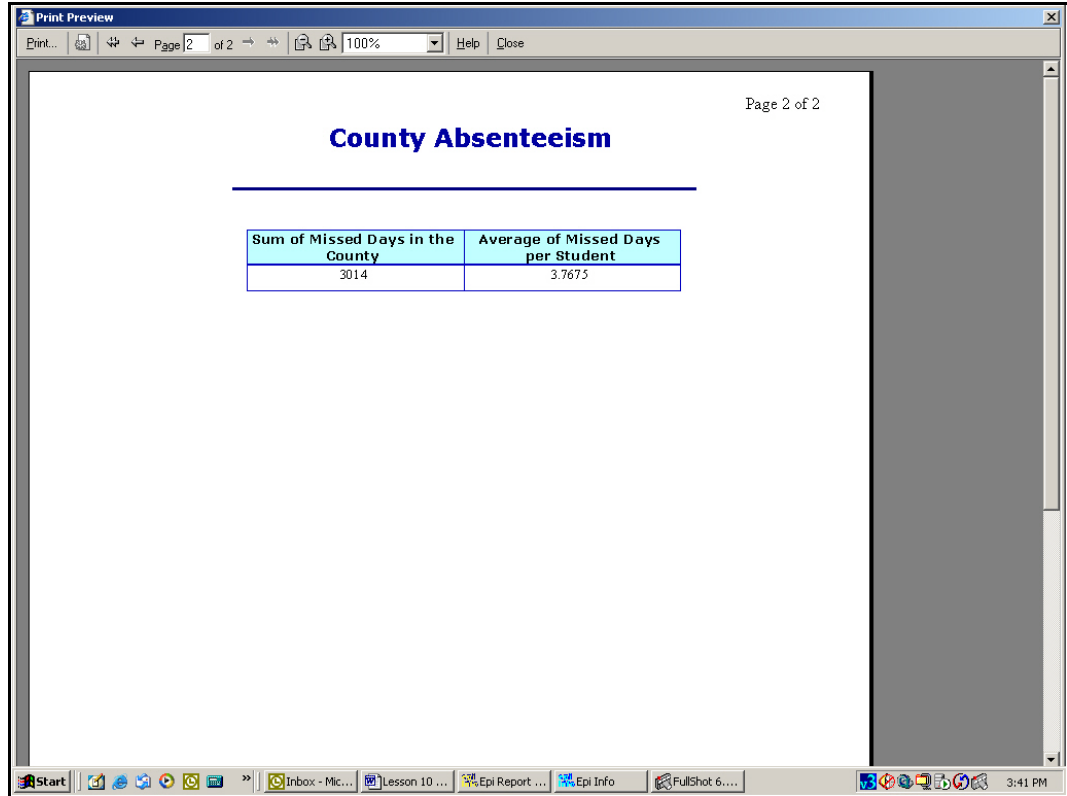
Sum of Missed Days in the County	Average of Missed Days per Student
{PreInterventionS	{PreInterventionS

14. Click **Generate** to see the results appear in the new table.
15. Click **Print Preview** from inside the Generate Page to see the report on the two pages.
16. **Close** the Preview window.
17. Click **Back** in the Generate window to return to the workspace.
18. Place the cursor inside the heading Sum of Missed Days in the County and right click.
19. From the pop-up menu, select **Row Properties**. The Properties- Row dialog box opens.
20. Select the Background Color field.
21. Use the Color drop-down to select a color.
22. Click **OK**. The color is applied to the selected Row of your table.

Sum of Missed Days in the County	Average of Missed Days per Student
{PreInterventionS	{PreInterventionS

23. Highlight select the text Sum of Missed Days in the County and Average of Missed Days per Student.
24. Use the Tool Bar to select a new Font, Size 10, and Bold.
25. De-select the text and select the table.
26. Resize the table if necessary.
27. Right click the table and open the Properties- Table dialog box.
28. Add a border to the table.
29. Select and drag the table to the top center of your new report page under the title label.
30. **Save** your report.
31. **Generate** the report.
32. **Print Preview** the report.

Page 2 should look similar to the following:



33. Close the Print Preview window.

34. Click **Back** from the Generate window to return to the workspace.

## Practice

From the Insert Report Object menu, select and drag a new table shell onto the report.

In the first cell of the table shell, right click and select Insert Row. Add rows to the table until you have 5 rows.

In the first cell of your table, type *Symptoms*.

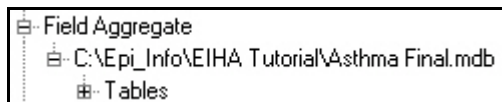
Fill in the first column of the table with the Symptoms from the survey. Your table should look like the following.

Symptoms		
Asthma		
Bronchitis		
Reactive Airway Disease		
Wheezing		

In the first row of the second column, type *Total Missed Days per Symptom*.

In the first cell of the third column, type *Average Missed Days per Symptom*.

Under Field Aggregate, right click on Tables under the Asthma Survey Final project.

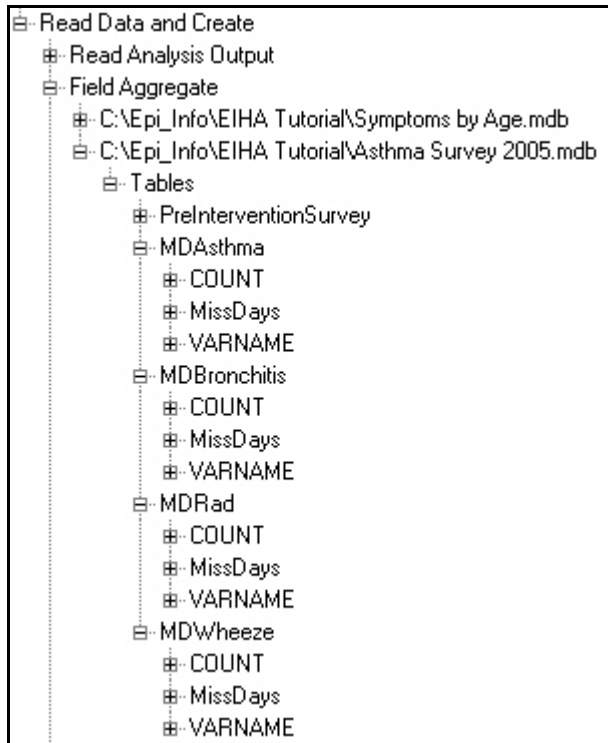


Select Edit Tables. The Select Tables dialog box opens.

From the Select Tables dialog box, use the single arrow to add the individual tables MD\_Asthma, MD\_Bronchitis, MD\_Rad, and MD\_Wheeze to the Tables to Show section.

Click **OK**. The list of available tables under the Field Aggregate menu updates.

From the Field Aggregate menu, click the plus box next to each MD table to open the selections.



Open the variable MissDays under each table. The list of aggregate values appears.

Drag the word **Sum** into the Total of Missed Days per Symptom column next to the corresponding symptom.

Be sure you are dragging the Sum onto the cell that matches the symptom.

Your table should look like the following:

Symptoms	Total Missed Days per Symptom	Average Missed Days per Symptom
Asthma	{MDAsthma.sMis	
Bronchitis	{MDBronchitis.s	
Reactive Airway Disease	{MDRad.sMissDa	
Wheezing	{MDWheeze.sMi	

Drag the word **Average** into the Average of Missed Days per Symptom column next to the corresponding symptom.

Your table should look like the following:

Symptoms	Total Missed Days per Symptom	Average Missed Days per Symptom
Asthma	{MDAsthma.sMis}	{MDAsthma.aMis}
Bronchitis	{MDBronchitis.s}	{MDBronchitis.a}
Reactive Airway Disease	{MDRad.sMissDa}	{MDRad.aMissDa}
Wheezing	{MDWheeze.sMi}	{MDWheeze.aMi}

Edit the table to make it look like the Sum of Missed Days table you created earlier in this lesson.

Add a cell color to the headings.

Add a border to the table.

Change the font size and style to match the Missed Days table.

Resize the table.

Center the table under the Missed Days table.

**Save** your report.

**Generate** the report and then **Preview** the report.

The report should look similar to the following:

Print Preview

Print... Page 2 of 4 100% Help Close

### County Absenteeism

Sum of Missed Days in the County	Average of Missed Days per Student
3014	3.7675

Symptoms	Total Missed Days per Symptom	Average Missed Days per Symptom
Asthma	99	11
Bronchitis	110	10
Reactive Airway Disease	105	10.5
Wheezing	112	9.3333333333

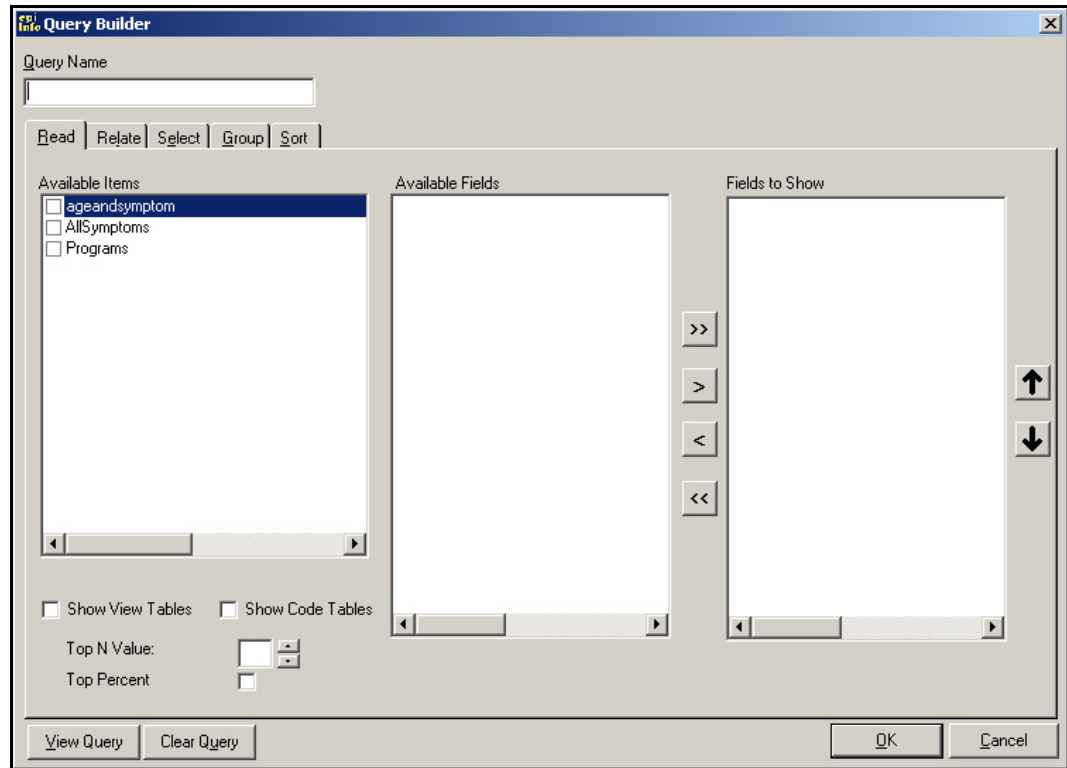
Start | Inboxes - Micros... | Epi Info | Lesson 10 Epi... | Epi Report - [C... | FullShot 6.01... | 2:42 PM

## Create a Line Listing Group

Line listings are record lists based on queries. Use Epi Report to create the query and then drag and drop the listing into your report. For the report, you will be creating a line listing of children with asthma by age group and school.

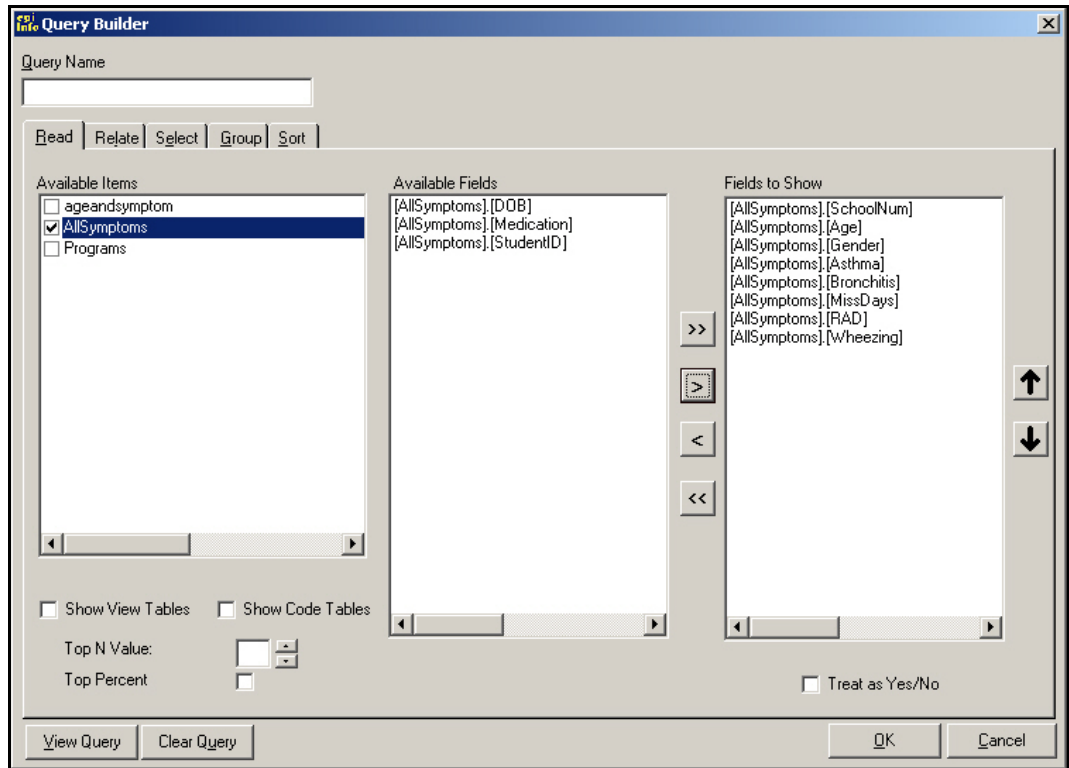
1. Insert a page break under the last table on the page.
2. Drag a Label to the new page.
3. In the Label area, type the page name *Absenteeism for School A- Age 7*.
4. Change the Font Style, Size 18, Bold.
5. From the Element Command Tree under Read Data and Create, select **Line Listing Group**.
6. From the pop-up selector, click Select an MDB File. The Select Access Database window opens.
7. Locate and select the SymptomsByAge.mdb. The Query Builder window opens.
  - This project is the one you created in Analysis to hold the line graph data for symptoms by age.
  - If you do not have the Epi Graph project, use the SymptomsByAgeSample.mdb provided.



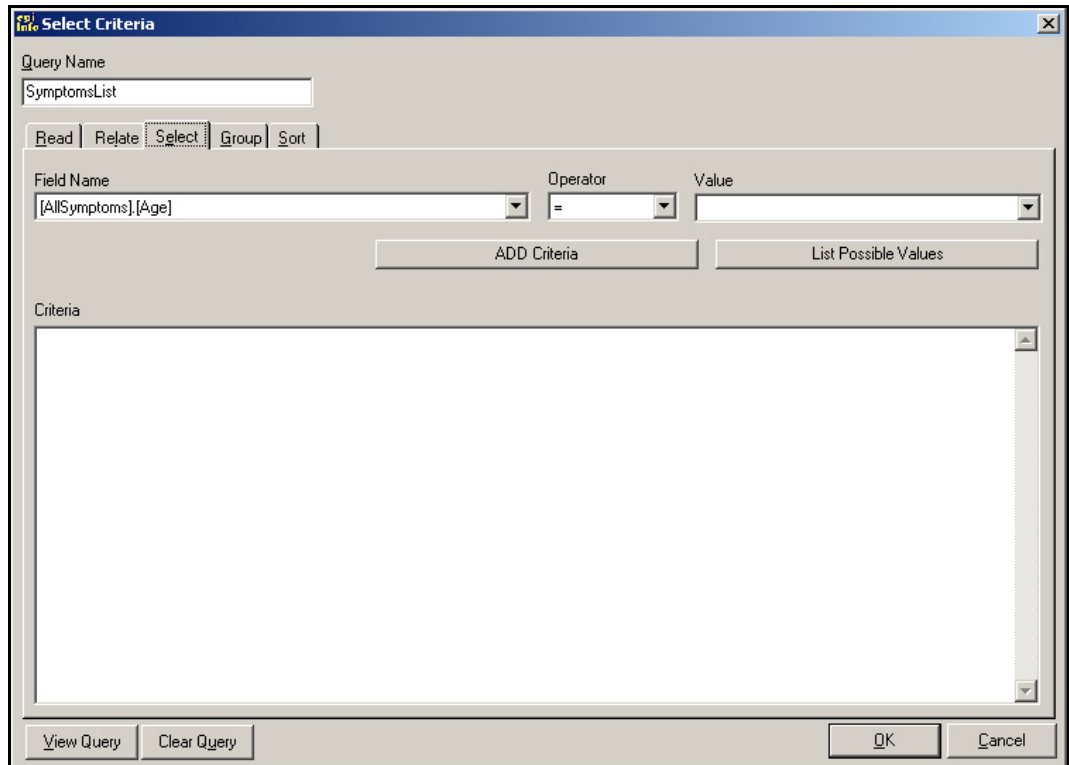


8. From the Available Items field, click the checkbox next to AllSymptoms. The Available Fields section populates.
9. Select the SchoolNum field, and click the single area to move it to the Fields to Show section.
10. Add the following to the Fields to Show section:
  - Age, Gender, MissDays, Asthma, Bronchitis, RAD, and Wheezing.
11. In the Query Name field at the top of the window, type *SymptomsList*.

Your Query Builder dialog box should look like the following:



12. Click the **Select** tab. The Select Criteria options appear.



- To narrow down the listing in this example, you are going to create a line listing of students from School A who answered Yes to Asthma and equal seven years of age.
13. From the Field Name drop-down, select [AllSymptoms].[SchoolNum]
  14. From the Operator drop-down, select =.
  15. Click **List Possible Values**.
  16. From the Value drop-down, select A.
  17. Click **ADD Criteria**. The Criteria field populates.
    - Use the same series of steps to select students who answered Yes to Asthma, and add their criteria. Hint: Yes, appears as True in the Query Builder.
    - Use the same series of steps to select the students who are seven years of age, and add their criteria. Hint: Remember to change the Operator drop-down selection.
    - If you make a mistake and add the wrong criteria, highlight select it in the Criteria field and press **Delete** on the keyboard.

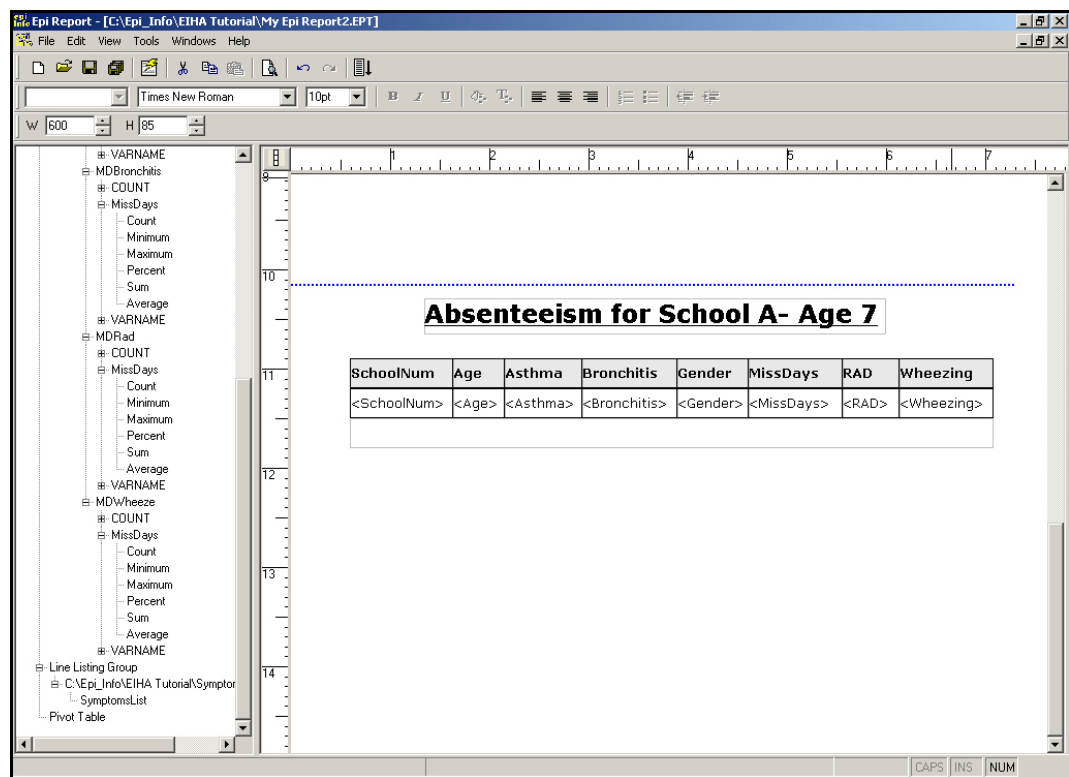
The Select Criteria options should look like the following:

18. Click **OK**. The Line Listing Group menu now contains the SymptomsList Query you created.

19. Click and drag SymptomsList to the work area on page three.

- Resize the table using the bounding boxes.
- Use the Properties- Table box to add borders. When you add a border to a Line Listing there will be an extra drop-down menu in the Choose Border dialog box. Use the drop-down to add borders to the Header and the Body of the table.
- Use the Tool Bar to change the font style.
- Use the Tool Bar to change the Heading Fonts to Bold.

The report workspace should look similar to the following:



20. **Generate** and **Print Preview** the report to see page breaks and tables.


21. **Close** the Print Preview window.

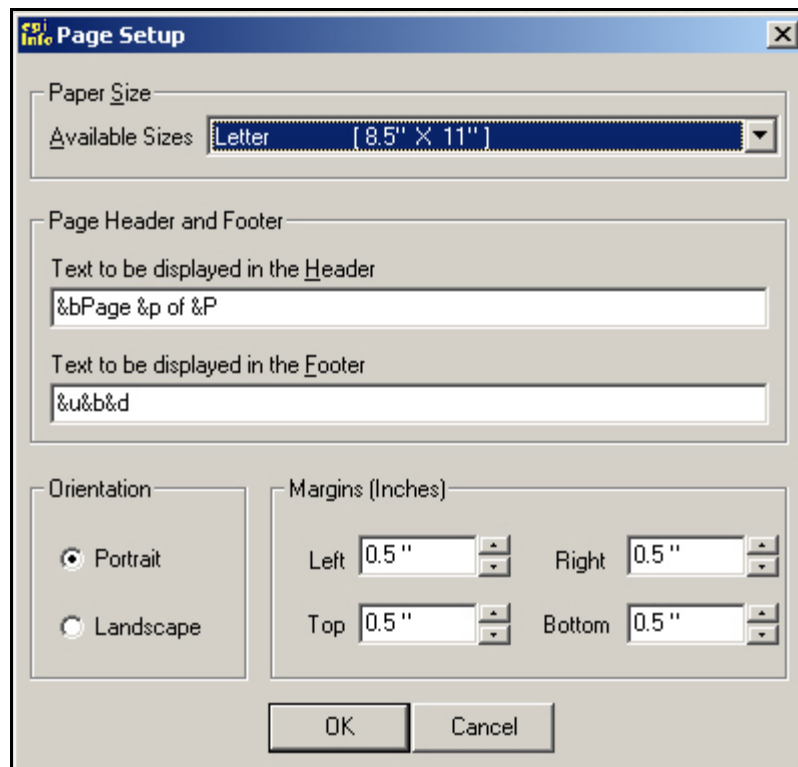
22. Click **Back** in the Generate window to return to the workspace.

23. **Save** the report.

## Insert an Image

For this report, you want to insert the worst month for asthmatic conditions pie graph you created in Analysis into a new template page. The graph will look best printed in a landscape style, so before inserting the image, you will use the Page Setup options.

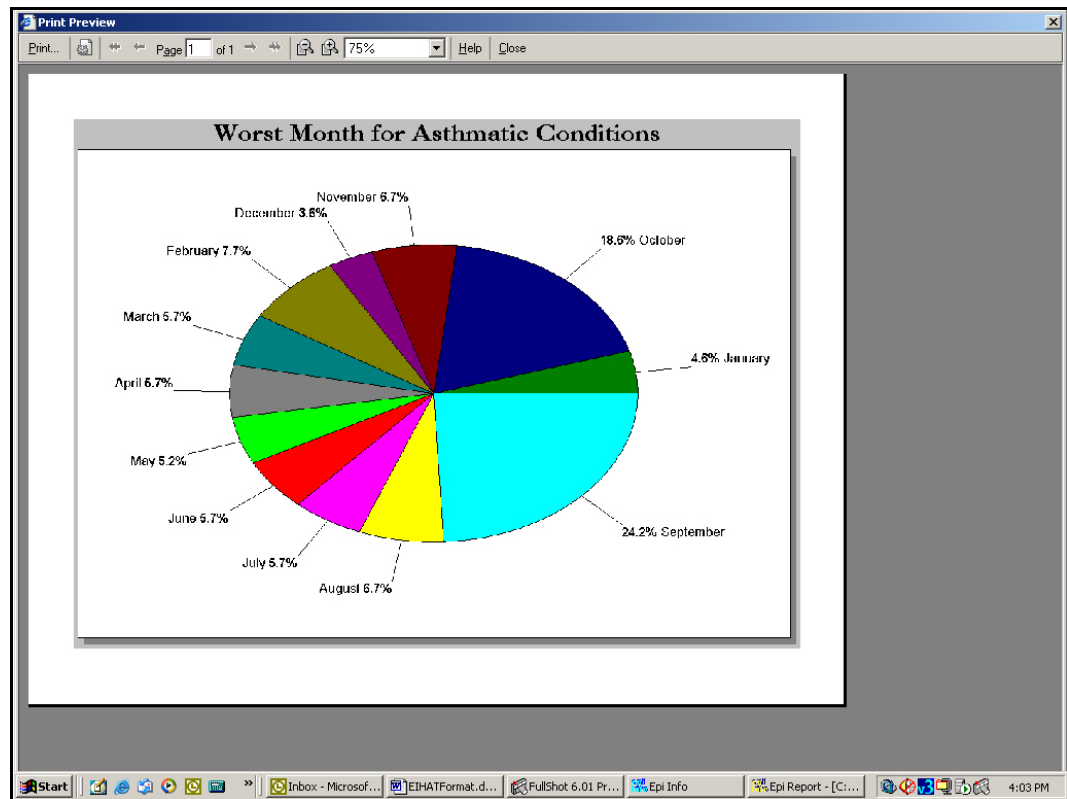
1. Click the **New Blank Template**  icon to create a new report.
2. Select **File>Page Setup**. The Page Setup dialog box opens.
3. From the Orientation section, select the Landscape radio button.



- Notice the text inside the Page Header and Footer Section. Keeping this text will add page, date, and file location to your printed page.
  - To remove this pre-set information, select the text in the Text to be displayed in the Header and Text to be displayed in the Footer fields and press **Delete** on the keyboard.
4. Click **OK**.
  5. Open the Insert Report Object menu.
  6. Select **Image**.
  7. Drag Image onto the new report workspace. The Select an Image window opens.

8. From the Files of type drop-down menu, select .BMP Files. All the bitmap files in your EIHA folder appear in the file section.
9. Select the WMonthPieGraph.bmp you created in the Epi Graph Lesson or select the sample graph WMonthPie2.BMP from the download folder.
10. Click **Open**. The Worst Month for Asthma pie graph appears in the report.
11. Click the Page Area icon.
12. Scroll to the right and notice the page breaks in the middle of your graph.
13. Turn off the Page Area icon.
14. Select the graph. Bounding boxes appear around the graph.
15. Click and drag the image to the top left of the page.
16. Right click and select Properties. The Properties- Image dialog box opens.
17. In the Width field, type a number to resize the image to fit your computer window.
18. Press **Enter** on the keyboard. This resizes your graph slightly so that it fits into the Page Area.

From the Generate>Print Preview window, the report will look similar to the following:



19. Select **File>Save As**. The Save Epi Report window opens.
20. In the File Name field, type *WMonth Report*.
21. Click **Save**.
22. Close Epi Report.

 Skills Review

Place a checkmark next to the correct answer for each of the following questions. Refer to *Appendix D Skills Reviews Answer Key* for further details.

1. Which Analysis Output files are accessible by Epi Report?

HTML

XML

ASP

2. To view a report with complete data included, click what button?

Add Vertical Space

Generate Reports

Preview the Template

3. Aggregate data can be added to reports from the Read Data and Create menu.

True

False

4. Line Listing groups can be customized from which dialog box?

Query Builder

Print Preview

Properties

5. What Report Object element is used to insert a graphic into a report?

Image

Object

Generate



Lesson Complete!

#### WHAT YOU LEARNED

---

How to

- Insert text and line elements into a report template.
- Use the Properties dialog box to customize inserted elements.
- Insert Analysis .XML output into a report.
- Insert Aggregate Data from an Epi Info™ project into a Table Shell.
- Insert a Line Listing Group based on data tables created in Analysis.
- Insert an Image you created in Epi Graph.