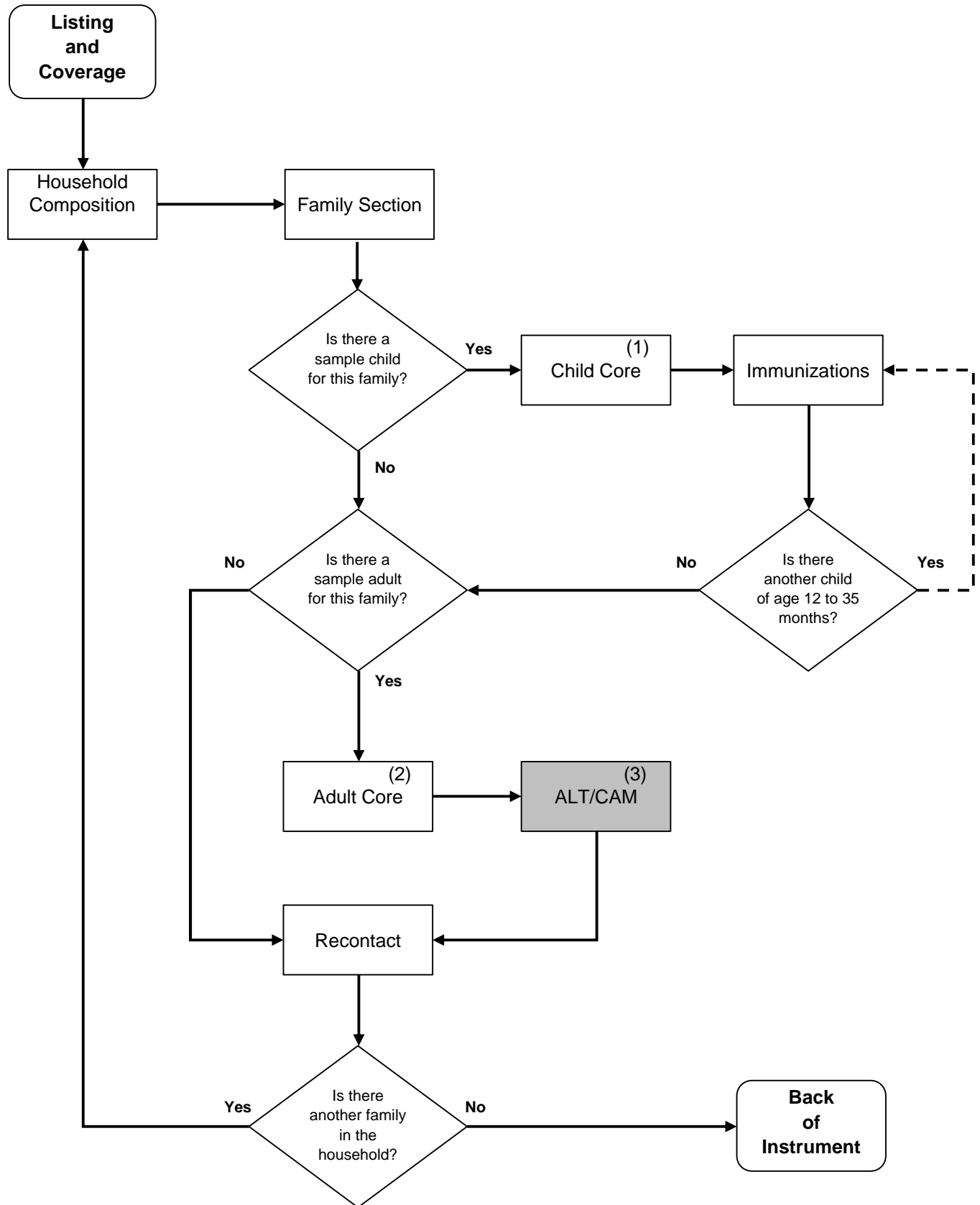


Flowchart of the 2002 NHIS Questionnaire Components



- (1) The Child Core contains additional questions on asthma, hearing, vision, and behavior/learning problems.
 (2) The Adult Core contains additional questions on heart disease, asthma, bowel disease, multiple sclerosis, joint problems, hearing and vision problems, etc., and a special set on disability.
 (3) ALT/CAM is the Alternative Health / Complementary and Alternative Medicine Supplement.