

# Monthly Vital Statistics Report



Provisional Data From the CENTERS FOR DISEASE CONTROL AND PREVENTION/National Center for Health Statistics

## Births, Marriages, Divorces, and Deaths for August 1997

### Births

According to provisional reports, an estimated 339,000 births occurred in the United States during August 1997. This was a 6-percent decrease from the provisional number of births reported for August 1996 (360,000). The birth rate, 14.9 live births per 1,000 population, was 7 percent lower than August 1996 (16.0). The fertility rate, 66.9 live births per 1,000 women 15–44 years, was 6 percent lower than the comparable rate for August 1996 (71.3). The seasonally adjusted fertility rate (63.1) was also 6 percent lower than the comparable rate for August 1996 (67.3).

During the first two-thirds of 1997, an estimated 2,555,000 births occurred, a

1-percent decrease from the 2,591,000 births reported for the first two-thirds of 1996. The birth rate declined by 2 percent from 14.7 in 1996 to 14.4 in 1997. The fertility rate for the first two-thirds of 1997 was 64.3, 2 percent lower than the rate for the same period of 1996 (65.3). An estimated 3,863,000 live births occurred in the 12-month period ending with August 1997, a slight rise from the 3,855,000 births reported for the same period a year earlier. The birth rate of 14.5 was 1 percent lower than the rate of 14.6 for the preceding 12-month period. The fertility rate for the most recent 12-month period was 64.8, the same as the rate for the 12-month period ending with August 1996. These fairly steady rates continued the slowing of

the downward trend that had been observed since early 1991.

### Natural increase

As a result of natural increase, the excess of births over deaths, an estimated 161,000 people were added to the population during August 1997 at an annual rate of 7.1 persons per 1,000 population. For the 12-month period ending with August 1997, 1,560,000 persons were added to the population. This represented a rate of natural increase of 5.9, the same as the rate for the preceding 12-month period. The steady rate of natural increase was due to similar small decreases in the birth rate and the death rate.

### Provisional Vital Statistics for the United States

[Rates for infant deaths are deaths under 1 year per 1,000 live births; fertility rates are live births per 1,000 women aged 15–44 years; all other rates are per 1,000 total population. Data are subject to monthly reporting variation; see [Technical notes](#)]

Item	August				January–August				12 months ending with August				
	Number		Rate		Number		Rate		Number		Rate		
	1997	1996	1997	1996	1997	1996	1997	1996	1997	1996	1997	1996	1995
Live births . . . . .	339,000	360,000	14.9	16.0	2,555,000	2,591,000	14.4	14.7	3,863,000	3,855,000	14.5	14.6	15.0
Fertility rate . . . . .	...	...	66.9	71.3	...	...	64.3	65.3	...	...	64.8	64.8	66.1
Deaths . . . . .	178,000	176,000	7.8	7.8	1,542,000	1,551,000	8.7	8.8	2,303,000	2,303,000	8.6	8.7	8.8
Infant deaths . . . . .	2,200	2,200	6.9	6.7	17,700	18,700	6.9	7.3	27,000	28,200	7.0	7.3	7.7
Natural increase . . . . .	161,000	184,000	7.1	8.2	1,013,000	1,040,000	5.7	5.9	1,560,000	1,552,000	5.9	5.9	6.2
Marriages . . . . .	252,000	239,000	11.1	10.7	1,590,000	1,532,000	9.1	8.8	2,401,000	2,319,000	9.0	8.8	9.0
Divorces . . . . .	93,000	101,000	4.1	4.5	770,000	770,000	4.3	4.4	1,150,000	1,154,000	4.3	4.4	4.5
Population base (in millions) . . . . .	...	...	267.8	265.4	...	...	...	...	...	...	266.8	264.3	262.0

... Category not applicable.

NOTES: Figures include revisions received from the States. Twelve-month figures for the current year reflect revisions received for previous months, and figures for earlier years may differ from those previously published.



U.S. DEPARTMENT OF HEALTH AND HUMAN SERVICES  
Centers for Disease Control and Prevention  
National Center for Health Statistics



### Marriages

Approximately 252,000 couples married in August 1997, 5 percent more than in August 1996 (239,000). The marriage rate per 1,000 population for August 1997 (11.1) was 4 percent higher than in 1996 (10.7).

The number and the rate of marriages for the first 8 months of 1997 were higher than the number and the rate for the same period in 1996. The number of marriages performed in the cumulative period for 1997 (1,590,000) was 4 percent higher than the number performed for the same period a year earlier (1,532,000), while the marriage rate for the 8-month period was 3 percent higher in 1997 (9.1) than in 1996 (8.8).

The number of couples married during the 12 months ending with August 1997 (2,401,000) was 4 percent higher than the number for the comparable period a year earlier (2,319,000). The marriage rate rose from 8.8 for the period ending with August 1996 to 9.0 for the period ending with August 1997—an increase of 2 percent.

### Divorces

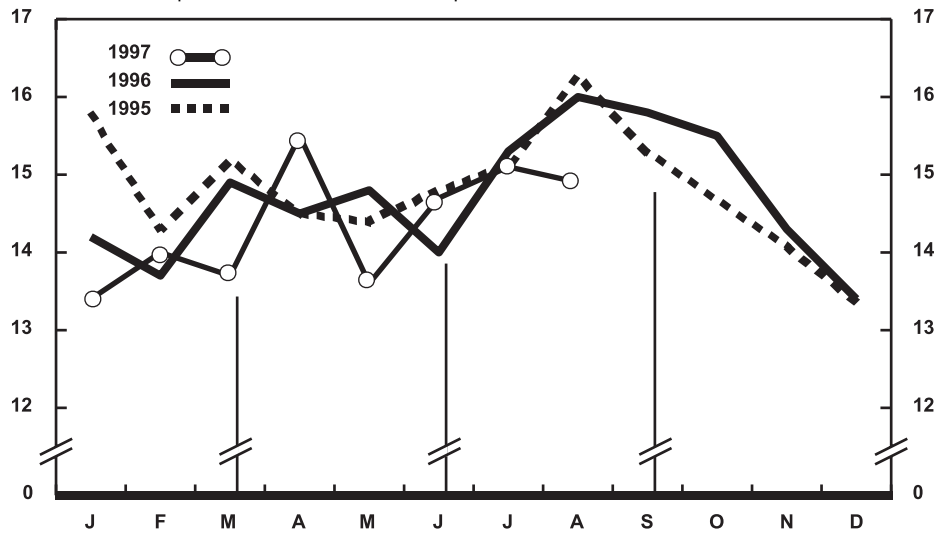
An estimated 93,000 divorces were granted in August 1997, yielding a current monthly divorce rate of 4.1 divorces per 1,000 population.

The number of divorces for the first 8 months of 1997 (770,000) was the same as the number of divorces for the comparable period in 1996. The rate declined 2 percent—from 4.4 in 1996 to 4.3 in 1997.

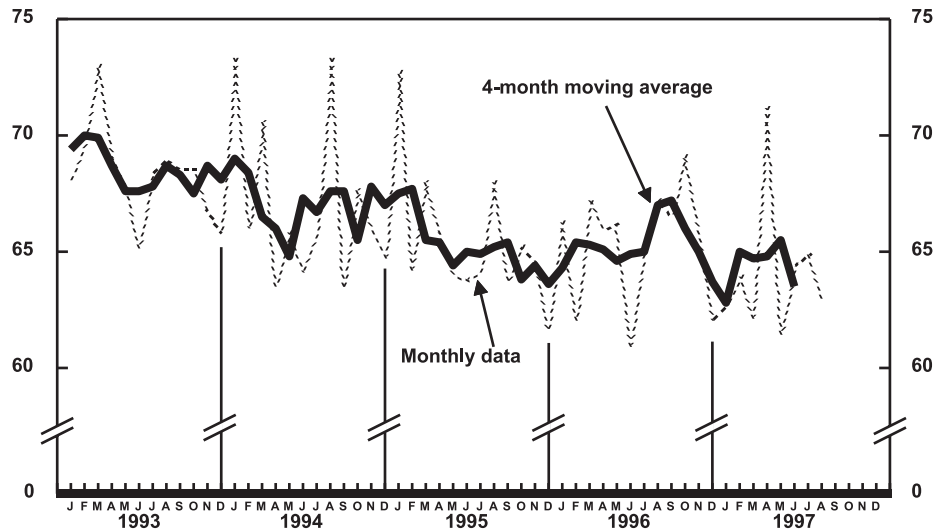
Approximately 1,150,000 couples divorced during the 12-month period ending with August 1997, showing a slight decrease in the number for the same period a year earlier (1,154,000). The divorce rate for the current 12-month period (4.3) was 2 percent lower than the rate for the same period ending with August 1996 (4.4).

### Deaths

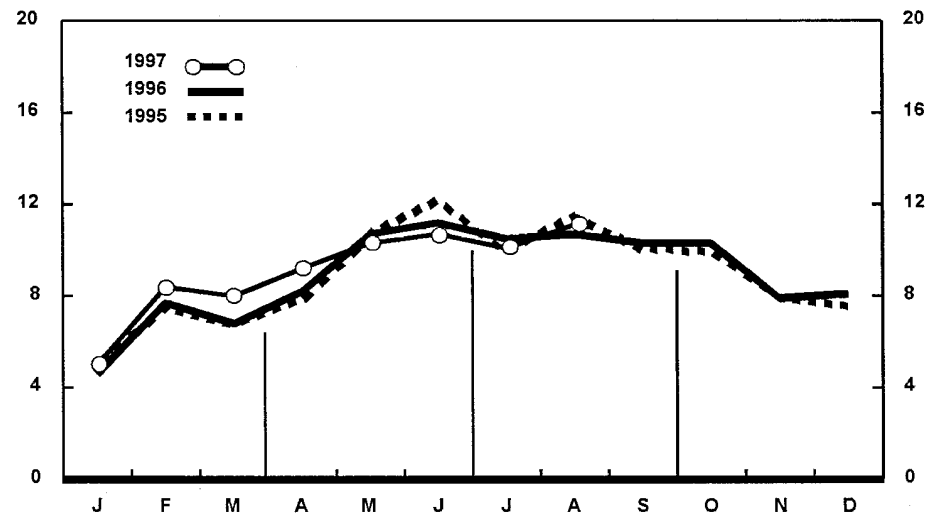
For August 1997 there were an estimated 178,000 deaths in the United States. The death rate was 7.8 deaths per 1,000 population, the same as the rate for August a year earlier. Among the 178,000 deaths for August 1997 were 2,200 deaths at ages under 1 year.



Provisional birth rates per 1,000 population by month: United States, 1995-97



Provisional seasonally adjusted fertility rates per 1,000 women aged 15-44 years: United States, 1993-97



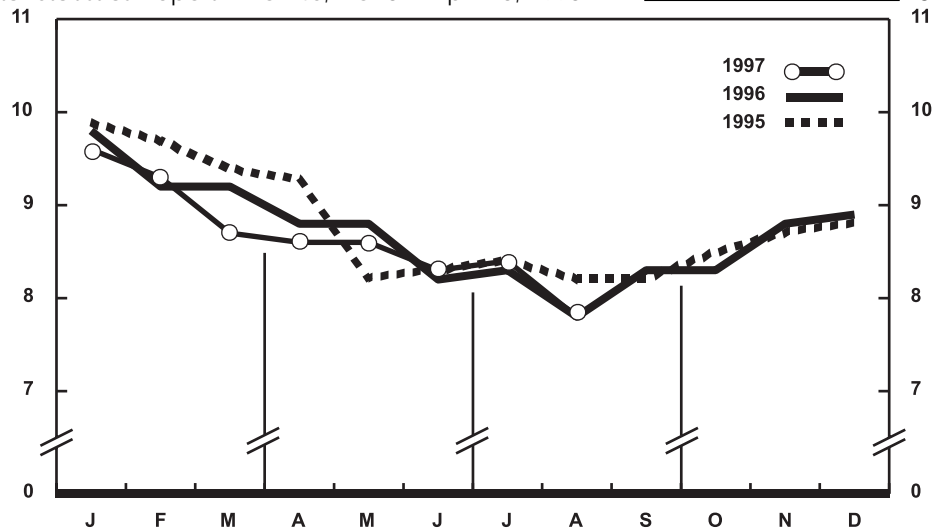
Provisional marriage rates per 1,000 population by month: United States, 1995-97

According to provisional statistics, there were 1,542,000 deaths during the first 8 months of 1997, a decrease of 1 percent from the number estimated for January–August 1996 (1,551,000). The death rate, 8.7 per 1,000 population, was 1 percent lower than the rate for January–August 1996 (8.8). Among the 1,542,000 deaths for January–August 1997 were 17,700 deaths at ages under 1 year, yielding an infant mortality rate of 6.9 per 1,000 live births. This rate was 5 percent lower than the rate of 7.3 for the first 8 months of 1996.

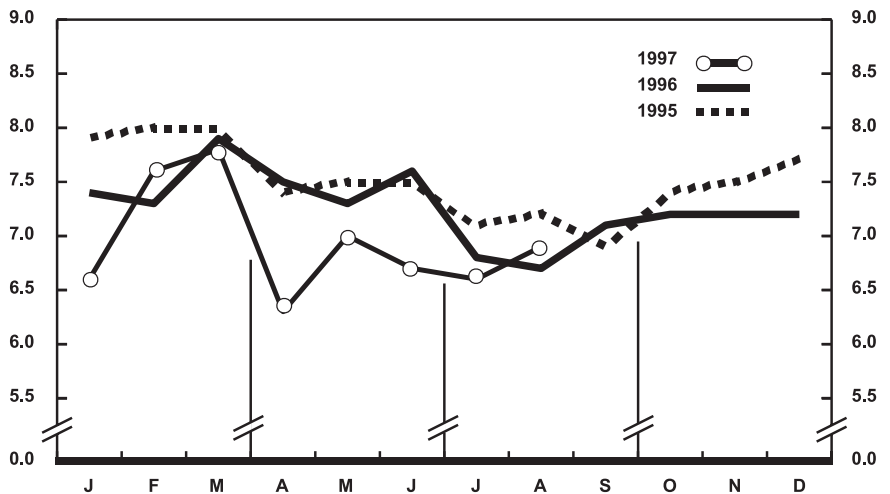
The death rate for the 12 months ending with August 1997 was 8.6 deaths per 1,000 population, 1 percent lower than the rate of 8.7 for the comparable 12-month period a year earlier. The infant mortality rate for this 12-month period was 7.0 per 1,000 live births, 4 percent lower than the rate of 7.3 for the 12 months ending with August 1996.

*Current Mortality Sample, 12 months ending with July 1997*—The provisional death rate for the 12 months ending with July 1997 was 863.1 per 100,000 population, a decrease of 1 percent from the rate of 874.4 for the 12-month period ending July 1996. The provisional age-adjusted death rate for the 12-month period ending with July 1997 was 481.8 per 100,000 U.S. standard population, 3 percent lower than the rate of 496.9 for the 12-month period ending with July 1996. The age-adjusted death rates control for changes and variations in the age composition of the population; therefore, they are better indicators than crude rates for showing changes in mortality risk over time and for showing differences between race-sex groups within the population. Among the four race-sex groups, the estimated age-adjusted death rate decreased for all groups. By age the death rate for the total population decreased for the age groups 1–4 years, 15–24 years through 35–44 years, and 55–64 years through 75–84 years of age.

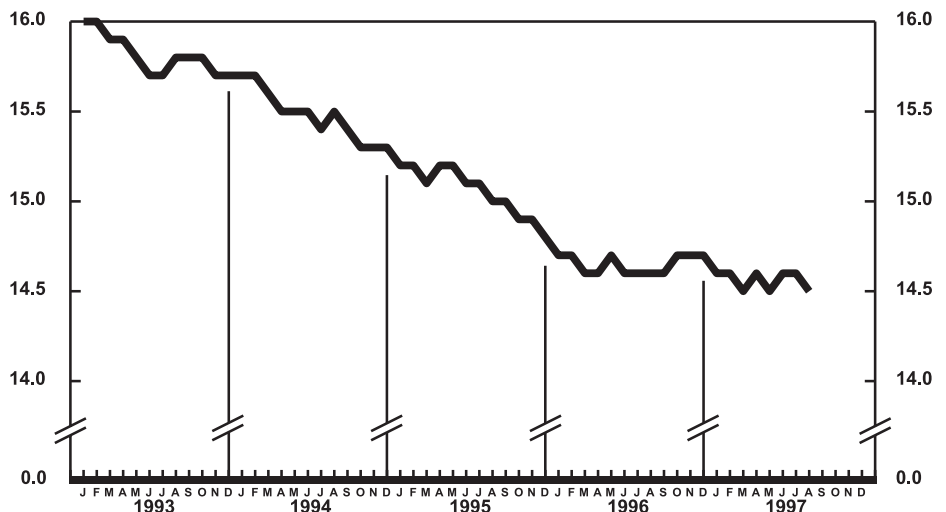
Among the major causes of death, the estimated death rate continued to decrease between the two successive 12-month periods for Human immunodeficiency virus infection; Malignant neoplasms, including neoplasms of lymphatic and hematopoietic tissues; Diseases of heart;



Provisional death rates per 1,000 population by month: United States, 1995–97



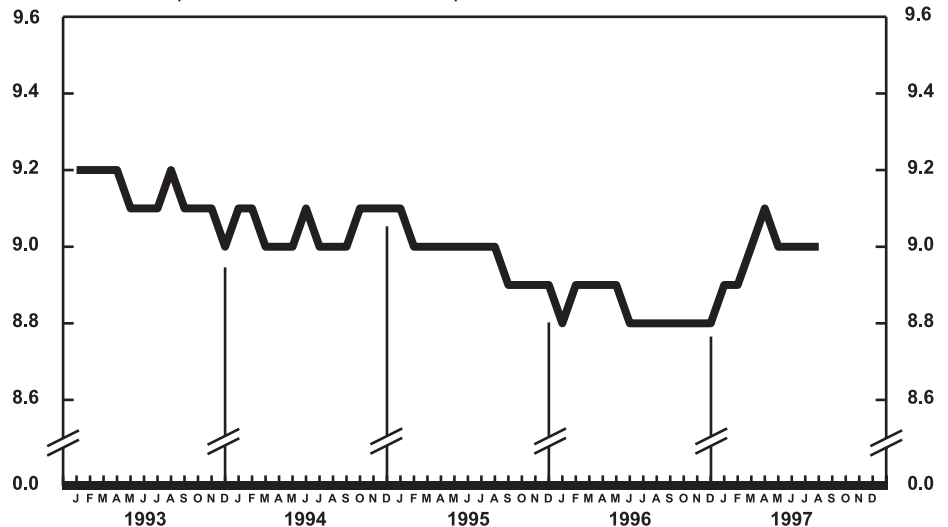
Provisional infant mortality rates per 1,000 live births by month: United States, 1995–97



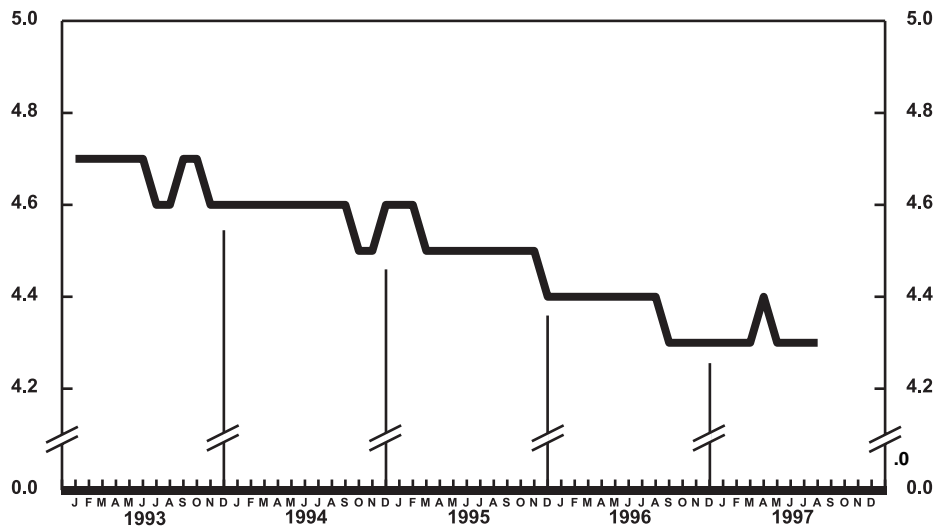
Provisional birth rates per 1,000 population for successive 12-month periods ending with month indicated: United States, 1993–97

Accidents and adverse effects; and Homicide and legal intervention. The decrease for Homicide and legal intervention was largely due to the decline in the rate for homicide by firearms. The death rate increased between the two successive 12-month periods for Pneumonia and influenza.

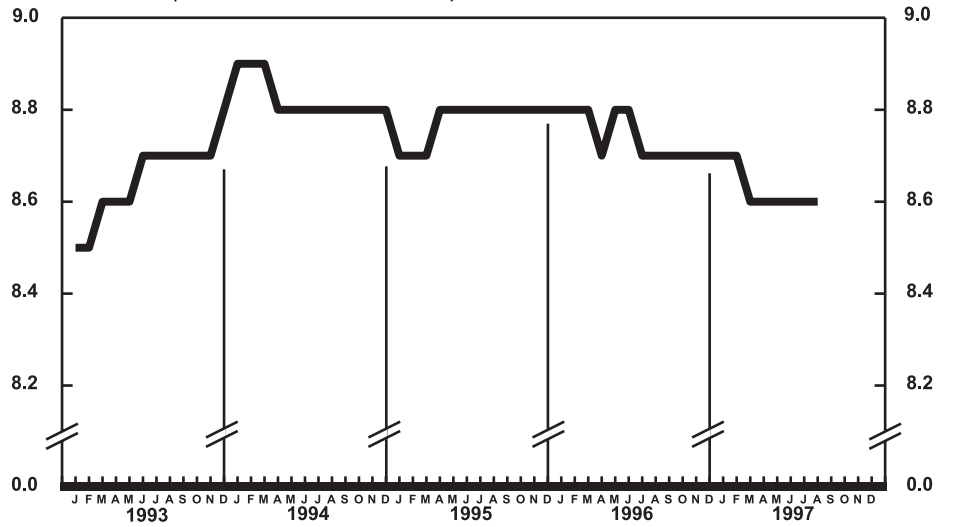
The infant mortality rate for the 12 months ending with July 1997 was 698.5 per 100,000 live births, 6 percent lower than the rate of 738.9 for the same 12-month period a year earlier. For infants under 28 days of age, the 12-month rate ending July 1997 was 450.2, 7 percent lower than the rate of 483.3 for the 12-month period a year earlier. The infant mortality rate for infants aged 28 days–11 months was 248.2 compared with a rate of 255.6 for the 12-month period a year earlier. The change in the mortality rate for infants aged 28 days–11 months was not statistically significant. Among causes of infant death, the infant mortality rate decreased between the two successive 12-month periods for Birth trauma and Sudden infant death syndrome.



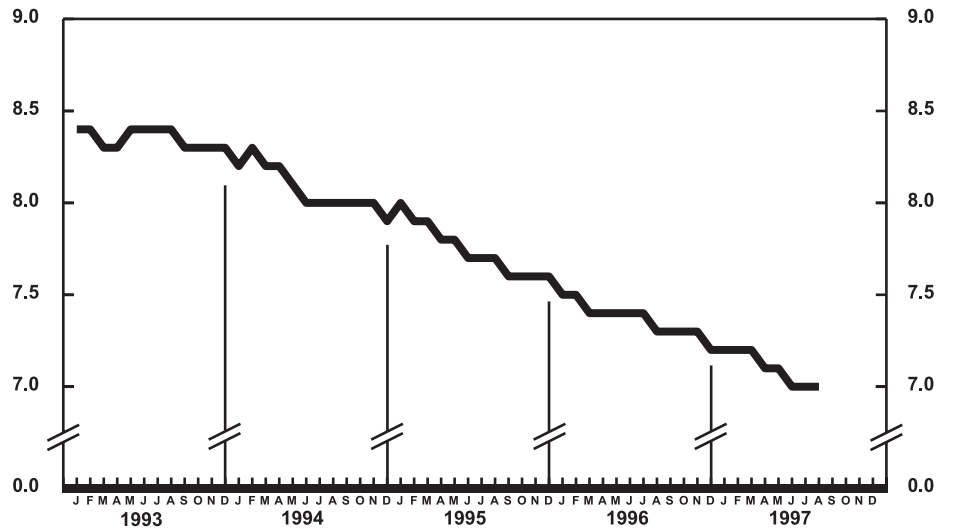
Provisional marriage rates per 1,000 population for successive 12-month periods ending with month indicated: United States, 1993–97



Provisional divorce rates per 1,000 population for successive 12-month periods ending with month indicated: United States, 1993–97



Provisional death rates per 1,000 population for successive 12-month periods ending with month indicated: United States, 1993-97



Provisional infant mortality rates per 1,000 live births for successive 12-month periods ending with month indicated: United States, 1993-97

**Table 1. Provisional number of live births, marriages, divorces, deaths, and infant deaths and rates, by month: United States, January 1996–August 1997**

[Data are provisional and are subject to monthly reporting variation; see [Technical notes](#)]

Period	Live births				Marriages		Divorces		Deaths		Infant deaths	
	Number	Rate per 1,000 population	Rate per 1,000 women aged 15–44 years		Number	Rate per 1,000 population	Number	Rate per 1,000 population	Number	Rate per 1,000 population	Number	Rate per 1,000 live births
			Unadjusted	Seasonally adjusted <sup>1</sup>								
<b>1996:</b>												
January . . . . .	318,000	14.2	63.2	66.3	100,000	4.6	94,000	4.2	220,000	9.8	2,400	7.4
February . . . . .	286,000	13.7	60.7	62.0	155,000	7.7	85,000	4.1	193,000	9.2	2,200	7.3
March . . . . .	334,000	14.9	66.3	67.3	147,000	8.2	93,000	4.2	206,000	9.2	2,600	7.9
April . . . . .	314,000	14.5	64.3	65.9	172,000	8.2	95,000	4.4	192,000	8.8	2,300	7.5
May . . . . .	332,000	14.8	65.7	66.2	241,000	10.7	103,000	4.6	198,000	8.8	2,400	7.3
June . . . . .	304,000	14.0	62.2	61.0	242,000	11.2	103,000	4.8	179,000	8.2	2,300	7.6
July . . . . .	343,000	15.3	67.9	65.2	235,000	10.5	96,000	4.3	187,000	8.3	2,300	6.8
August . . . . .	360,000	16.0	71.3	67.3	239,000	10.7	101,000	4.5	176,000	7.8	2,200	6.7
September . . . . .	345,000	15.8	70.6	66.5	225,000	10.3	92,000	4.2	182,000	8.3	2,400	7.1
October . . . . .	348,000	15.5	68.9	69.2	231,000	10.3	99,000	4.4	188,000	8.3	2,500	7.2
November . . . . .	313,000	14.3	63.9	66.0	171,000	7.9	94,000	4.3	191,000	8.8	2,300	7.2
December . . . . .	302,000	13.4	59.8	62.1	184,000	8.1	94,000	4.2	200,000	8.9	2,300	7.2
<b>1997:</b>												
January . . . . .	303,000	13.4	59.8	62.7	109,000	5.0	93,000	4.1	218,000	9.6	2,100	6.6
February . . . . .	287,000	14.0	62.7	63.9	165,000	8.4	87,000	4.2	191,000	9.3	2,200	7.6
March . . . . .	311,000	13.7	61.4	62.2	174,000	8.0	94,000	4.2	197,000	8.7	2,500	7.8
April . . . . .	340,000	15.5	69.4	71.2	193,000	9.2	106,000	4.8	189,000	8.6	2,100	6.3
May . . . . .	309,000	13.6	61.0	61.4	234,000	10.3	98,000	4.3	195,000	8.6	2,200	7.0
June . . . . .	323,000	14.7	65.7	64.4	235,000	10.7	99,000	4.5	182,000	8.3	2,100	6.7
July . . . . .	343,000	15.1	67.6	64.9	228,000	10.1	99,000	4.3	192,000	8.4	2,200	6.6
August . . . . .	339,000	14.9	66.9	63.1	252,000	11.1	93,000	4.1	178,000	7.8	2,200	6.9

<sup>1</sup>The method of seasonal adjustment, developed by the U.S. Bureau of the Census, is described in *The X-11 Variant of the Census Method II Seasonal Adjustment Program*, Technical Paper No. 15 (1967 revision).

NOTE: Figures include all revisions received from the States and, therefore, may differ from those previously published.

**Table 2. Provisional number of live births and deaths: Each division and State, August 1996 and 1997, and cumulative figures, 1995–97**

[Data are estimates by State of residence; see [Technical notes](#)]

Area	Live births					Deaths				
	August		January–August			August		January–August		
	1997	1996	1997	1996	1995	1997	1996	1997	1996	1995
New England	14,474	16,833	121,179	118,206	127,021	8,263	9,361	78,988	76,869	80,358
Maine	1,145	1,201	9,160	9,271	9,182	897	1,012	7,498	7,574	7,730
New Hampshire	1,352	1,228	9,628	9,412	10,041	710	740	6,475	6,007	6,245
Vermont	637	538	4,562	4,533	4,692	357	366	3,570	3,373	3,522
Massachusetts	6,592	7,871	60,860	60,292	63,082	3,014	3,594	35,703	35,143	37,462
Rhode Island	1,008	1,223	8,062	8,363	8,335	701	733	6,496	6,173	6,400
Connecticut	3,740	4,772	28,907	26,335	31,689	2,584	2,916	19,246	18,599	18,999
Middle Atlantic	46,173	44,279	342,243	350,630	352,877	26,642	26,957	243,927	243,468	251,002
New York	24,973	22,878	176,082	180,507	176,297	11,332	11,657	110,374	110,182	115,106
New Jersey	9,481	9,362	72,508	70,079	73,990	5,442	5,721	46,939	48,177	50,604
Pennsylvania	11,719	12,039	93,653	100,044	102,590	9,868	9,579	86,614	85,109	85,292
East North Central	51,936	55,216	399,784	414,390	411,667	29,806	28,990	258,384	261,840	263,243
Ohio	13,808	13,623	97,276	98,095	98,966	9,027	7,051	71,066	69,408	70,048
Indiana	5,130	8,090	48,393	54,308	52,325	3,281	4,162	33,437	36,537	34,240
Illinois	15,288	16,198	119,359	122,488	124,150	8,006	7,850	67,955	69,669	72,898
Michigan	12,275	11,354	90,191	94,188	90,840	6,262	6,530	55,624	56,025	55,991
Wisconsin	5,435	5,951	44,565	45,311	45,386	3,230	3,397	30,302	30,201	30,066
West North Central	23,698	24,105	172,614	168,401	171,421	13,520	12,582	116,538	112,474	113,737
Minnesota	5,597	5,847	43,768	42,614	42,209	2,903	2,717	24,879	24,302	24,484
Iowa	3,461	3,494	24,731	22,804	23,272	1,894	2,144	18,642	17,884	17,527
Missouri	6,894	5,664	49,987	48,821	50,150	4,835	3,695	37,664	35,923	37,025
North Dakota	683	753	5,617	5,569	5,924	385	485	4,109	3,864	4,057
South Dakota	813	883	6,861	6,575	7,441	474	470	4,669	4,177	4,675
Nebraska	2,441	2,146	16,171	15,674	15,657	1,242	1,201	10,186	10,113	10,000
Kansas	3,809	5,318	25,479	26,344	26,768	1,787	1,870	16,389	16,211	15,969
South Atlantic	55,720	58,942	438,011	432,047	438,208	34,422	34,485	297,531	299,201	295,923
Delaware	829	840	6,679	6,786	6,779	427	517	4,293	4,309	4,162
Maryland	5,772	7,036	43,921	47,411	49,792	3,216	3,353	26,691	28,104	27,613
District of Columbia	724	724	5,552	5,474	6,067	468	516	3,995	4,174	4,390
Virginia	7,418	8,623	58,149	58,106	60,654	4,306	4,053	35,642	34,836	35,412
West Virginia	1,898	2,130	14,754	13,339	14,617	1,537	1,506	14,449	12,778	13,534
North Carolina	9,470	9,635	71,379	69,259	68,857	5,272	5,053	44,577	44,834	43,445
South Carolina	3,997	5,016	34,004	33,998	33,588	2,311	2,980	21,684	23,084	21,837
Georgia	8,643	8,467	77,579	75,183	74,992	4,464	4,588	41,072	40,613	39,779
Florida	16,969	16,471	125,994	122,491	122,862	12,421	11,919	105,128	106,469	105,751
East South Central	21,793	19,653	150,246	149,131	147,412	13,322	12,858	109,410	106,780	106,957
Kentucky	4,283	4,576	35,069	34,974	33,316	2,713	2,823	26,022	25,426	26,357
Tennessee	8,384	6,946	48,930	47,387	47,956	5,120	4,531	36,358	33,994	34,052
Alabama	5,553	5,119	40,480	40,719	40,950	3,365	3,429	28,913	29,239	28,438
Mississippi	3,573	3,012	25,767	26,051	25,190	2,124	2,075	18,117	18,121	18,110
West South Central	43,685	47,286	307,766	308,042	320,236	18,726	18,374	155,372	161,805	159,304
Arkansas	3,656	3,763	24,127	24,013	22,420	1,994	1,997	16,437	17,248	16,937
Louisiana	5,049	6,264	41,176	44,172	44,433	3,006	2,966	25,912	27,994	26,552
Oklahoma	3,760	4,668	30,929	29,951	31,285	2,355	2,548	22,555	22,434	21,999
Texas <sup>1</sup>	31,220	32,591	211,534	209,906	222,098	11,371	10,863	90,468	94,129	93,816
Mountain	20,370	22,759	180,936	172,563	163,732	10,685	9,104	81,232	83,123	78,369
Montana	894	1,021	6,981	7,364	7,432	650	650	5,208	5,158	5,046
Idaho	1,657	1,689	11,803	12,818	11,675	696	718	6,008	5,761	5,664
Wyoming	699	453	4,476	4,131	4,287	337	286	2,504	2,343	2,481
Colorado	1,920	4,037	35,501	32,477	34,419	1,889	1,900	17,054	17,006	16,809
New Mexico	2,173	2,305	17,604	18,100	17,838	951	876	8,998	8,611	8,506
Arizona	5,539	7,451	58,973	55,531	48,623	4,441	3,036	25,551	28,066	24,470
Utah	4,387	3,545	27,698	27,065	26,073	719	794	7,293	7,416	7,249
Nevada	3,101	2,258	17,900	15,077	13,385	1,002	844	8,616	8,762	8,144
Pacific	46,299	54,963	422,015	454,395	481,433	22,425	23,478	200,739	204,579	205,755
Washington	7,016	7,955	51,796	53,724	52,298	2,974	2,449	29,368	26,405	26,643
Oregon	3,938	3,883	30,483	30,550	30,038	2,240	2,230	19,675	18,631	18,844
California <sup>1</sup>	33,141	40,559	321,909	351,145	380,046	16,381	17,918	144,931	152,549	153,631
Alaska	806	988	6,552	6,685	7,055	220	196	1,561	1,617	1,587
Hawaii	1,398	1,578	11,275	12,291	11,996	610	685	5,204	5,377	5,050
Puerto Rico <sup>2</sup>	5,568	5,445	42,531	38,916	39,502	1,619	2,728	18,288	18,069	19,338

<sup>1</sup>Figures include adjustments for varying lengths of reporting periods; see [Technical notes](#).

<sup>2</sup>Data for Puerto Rico are not included in U.S. total figures.

NOTES: Figures include all revisions received from the States. Cumulative figures for the current year reflect revisions received for previous months, and figures for earlier years may differ from those previously published.



**Table 3. Provisional number of marriages and divorces: Each division and State, August 1996 and 1997, and cumulative figures, 1995–97**

[By State of occurrence. Number of events reported; see [Technical notes](#). Divorces include reported annulments]

Area	Marriages					Divorces				
	August		January–August			August		January–August		
	1997	1996	1997	1996	1995	1997	1996	1997	1996	1995
New England	19,782	10,285	155,278	56,803	58,983	4,193	3,994	29,318	24,818	26,647
Maine	---	1,206	---	6,572	6,899	600	629	2,514	3,119	3,326
New Hampshire	1,201	1,089	5,918	5,590	5,542	504	313	3,818	3,095	3,277
Vermont	722	678	3,432	3,358	3,466	200	222	1,843	1,815	1,909
Massachusetts	4,077	4,778	25,868	24,272	25,692	1,700	1,590	11,785	7,669	9,143
Rhode Island	1,029	905	5,351	4,860	4,395	246	361	2,068	2,171	2,511
Connecticut	2,753	1,629	14,709	12,151	12,989	943	879	7,290	6,949	6,481
Middle Atlantic	34,893	27,688	194,649	160,276	167,238	10,183	11,009	85,161	82,633	79,518
Ohio	21,228	16,193	112,549	86,019	89,094	5,171	5,703	41,963	40,382	36,497
New Jersey	5,709	4,774	36,765	30,648	31,592	1,588	1,749	17,320	17,003	16,679
Pennsylvania	7,956	6,721	45,335	43,609	46,552	3,424	3,557	25,878	25,248	26,342
East North Central	33,552	34,220	201,134	204,966	211,307	10,889	12,436	192,647	193,231	197,133
Illinois	8,909	9,065	52,626	51,984	57,548	3,697	4,043	30,418	29,153	33,443
Indiana	2,921	5,302	20,816	31,922	33,039	---	---	---	---	---
Michigan	9,110	8,625	61,801	56,186	50,912	3,268	3,415	25,480	26,828	25,166
Wisconsin	8,334	6,907	43,074	41,737	46,146	2,697	3,656	25,506	25,887	26,877
Wisconsin	4,278	4,321	22,817	23,137	23,662	1,227	1,322	11,243	11,363	11,647
West North Central	15,107	16,636	91,991	96,998	96,104	6,045	5,172	48,040	41,889	50,133
Minnesota	4,412	4,467	19,905	21,570	21,521	1,193	1,294	9,727	10,092	10,226
Iowa	2,537	2,584	14,370	14,877	14,181	787	822	6,443	6,541	7,058
Missouri	3,293	3,948	28,131	30,828	30,444	2,087	2,255	16,546	17,867	18,153
North Dakota	641	676	2,732	3,340	3,199	165	182	1,313	1,550	1,471
South Dakota	1,009	1,031	4,849	4,803	5,124	220	220	1,803	1,820	1,866
Nebraska	1,501	1,332	8,830	8,708	8,502	692	399	4,334	4,019	4,206
Kansas	1,714	2,598	13,174	12,872	13,133	901	---	7,874	---	7,153
South Atlantic	43,420	39,003	313,903	293,251	297,288	19,825	19,912	157,174	147,851	152,008
Delaware	596	537	3,510	3,352	3,337	283	344	2,074	2,312	2,559
Maryland	4,511	3,980	27,618	26,147	26,659	1,470	1,621	10,410	10,603	9,982
District of Columbia	968	447	2,322	1,487	1,280	106	123	633	764	950
Virginia	7,607	7,477	45,202	42,827	45,428	2,301	2,364	21,112	18,522	18,559
West Virginia	1,151	796	6,840	6,946	7,156	670	370	6,327	4,637	5,886
North Carolina	6,182	4,903	43,974	39,950	41,334	3,165	3,275	25,386	23,964	25,358
South Carolina	4,033	3,682	29,603	29,517	30,681	1,295	1,167	10,243	9,975	9,745
Georgia	5,745	4,960	41,945	40,447	41,936	3,017	4,632	24,555	24,371	24,470
Florida	12,627	12,221	112,889	102,578	99,477	7,518	6,016	56,434	52,703	54,499
East South Central	18,563	18,909	130,712	127,232	131,781	6,209	6,843	56,072	67,506	64,621
Kentucky	4,876	4,514	30,891	29,037	31,503	2,121	1,587	14,432	14,372	15,577
Tennessee	6,765	8,076	51,797	51,758	59,298	1,073	2,594	16,139	23,374	22,960
Alabama	4,976	4,505	32,521	31,779	26,853	2,108	2,152	16,034	17,616	17,551
Mississippi	1,946	1,814	15,503	14,658	14,127	907	510	9,467	12,144	8,533
West South Central	26,502	25,962	191,539	191,562	214,724	2,583	11,717	121,919	185,529	192,429
Arkansas	1,996	4,239	21,996	23,999	23,734	899	2,121	9,299	10,200	10,258
Louisiana	5,920	2,561	21,352	23,735	27,615	---	---	---	---	---
Oklahoma	2,611	2,532	19,449	18,768	19,714	1,684	1,806	12,620	13,443	14,694
Texas <sup>3</sup>	15,975	16,630	128,742	125,060	143,661	---	7,790	---	61,886	67,477
Mountain	26,546	26,848	167,037	190,692	185,264	4,766	16,109	140,582	149,475	149,768
Montana	986	1,081	4,660	4,773	4,752	337	298	2,635	2,827	2,774
Idaho	1,903	1,983	9,984	9,922	10,054	644	513	4,890	4,669	4,405
Wyoming	762	754	3,544	3,414	3,447	199	281	1,896	2,114	2,153
Colorado	3,841	4,570	23,203	23,965	23,548	---	---	---	---	---
New Mexico <sup>4,5</sup>	1,504	1,434	11,244	11,189	10,290	667	886	6,257	7,443	7,670
Arizona <sup>2</sup>	2,612	3,146	28,374	27,147	26,438	2,411	2,363	18,992	17,125	18,161
Utah	1,731	2,236	14,076	14,653	14,665	508	613	5,912	5,709	5,915
Nevada	13,207	11,644	71,952	95,629	92,070	---	1,155	---	9,588	8,690
Pacific	30,171	28,516	211,370	202,940	186,754	3,975	4,562	131,211	133,392	135,252
Washington	6,497	2,901	29,918	26,409	29,566	2,231	2,486	18,315	18,689	19,573
Oregon	4,035	3,653	14,854	15,934	18,118	1,161	1,363	7,838	9,565	10,067
California	17,500	19,376	149,863	143,616	123,000	---	---	---	---	---
Alaska	624	809	3,664	3,799	3,795	319	353	2,047	1,947	2,092
Hawaii	1,515	1,777	13,071	13,182	12,275	264	360	3,011	3,191	3,520
Puerto Rico <sup>6</sup>	2,036	2,783	19,704	19,868	21,372	---	---	---	---	---

--- Data not available.

<sup>1</sup>Excludes figures for State(s) shown below as not available.

<sup>2</sup>Figures for marriages are marriage licenses issued for some counties.

<sup>3</sup>Figures include adjustments for varying lengths of reporting periods; see [Technical notes](#).

<sup>4</sup>Figures for marriages are marriage licenses issued.

<sup>5</sup>Figures for divorces include estimates for some counties.

<sup>6</sup>Data for Puerto Rico are not included in U.S. total figures.

NOTES: Figures include all revisions received from the States. Cumulative figures for the current year reflect revisions received for previous months, and figures for earlier years may differ from those previously published.



**Table 4. Provisional number of deaths under 1 year and infant mortality rates: Each division and State, 12 months ending with August 1996 and 1997**

[Data are estimates by State of residence. Figures should be interpreted with caution because of conversion of place of occurrence to place of residence; see [Technical notes](#). Infant mortality rates are deaths under 1 year per 1,000 live births in specified area]

Area	12 months ending with August			
	1997		1996	
	Number	Rate	Number	Rate
New England . . . . .	900	5.2	897	5.3
Maine . . . . .	49	3.6	65	4.6
New Hampshire . . . . .	65	4.5	75	5.2
Vermont . . . . .	43	6.3	56	8.5
Massachusetts . . . . .	357	4.4	397	4.8
Rhode Island . . . . .	77	6.3	74	5.8
Connecticut . . . . .	309	6.6	230	5.8
Middle Atlantic . . . . .	3,471	6.6	3,772	7.1
New York . . . . .	1,672	6.3	1,832	6.8
New Jersey . . . . .	758	6.5	806	7.2
Pennsylvania . . . . .	1,041	7.3	1,134	7.6
East North Central . . . . .	4,600	7.5	5,032	8.0
Ohio . . . . .	1,093	7.2	1,219	7.9
Indiana . . . . .	537	6.9	681	7.9
Illinois . . . . .	1,446	8.0	1,531	8.3
Michigan . . . . .	1,065	8.0	1,092	8.0
Wisconsin . . . . .	459	7.0	509	7.6
West North Central . . . . .	1,804	7.0	1,781	7.1
Minnesota . . . . .	398	6.1	397	6.3
Iowa . . . . .	194	5.3	212	5.9
Missouri . . . . .	614	8.3	560	7.6
North Dakota . . . . .	54	6.4	33	3.9
South Dakota . . . . .	59	5.7	62	6.4
Nebraska . . . . .	197	8.3	190	8.2
Kansas . . . . .	288	7.3	327	8.9
South Atlantic . . . . .	5,298	8.0	5,489	8.5
Delaware . . . . .	73	7.3	74	7.4
Maryland . . . . .	592	8.8	577	8.3
District of Columbia . . . . .	104	12.5	138	16.5
Virginia . . . . .	620	7.0	689	7.9
West Virginia . . . . .	158	7.5	158	8.0
North Carolina . . . . .	997	9.2	939	9.2
South Carolina . . . . .	426	8.4	417	8.3
Georgia . . . . .	971	8.3	1,073	9.5
Florida . . . . .	1,357	7.0	1,424	7.6
East South Central . . . . .	2,101	9.1	2,095	9.3
Kentucky . . . . .	430	8.2	414	7.9
Tennessee . . . . .	664	8.8	651	8.9
Alabama . . . . .	561	9.2	633	10.4
Mississippi . . . . .	446	10.8	397	10.4
West South Central . . . . .	3,214	7.0	3,328	7.2
Arkansas . . . . .	320	8.9	312	8.7
Louisiana . . . . .	597	9.4	558	8.3
Oklahoma . . . . .	397	8.6	408	9.2
Texas <sup>1</sup> . . . . .	1,900	6.0	2,050	6.5
Mountain . . . . .	2,062	7.8	1,690	6.8
Montana . . . . .	82	7.9	83	7.4
Idaho . . . . .	134	7.5	122	6.5
Wyoming . . . . .	33	5.0	46	7.5
Colorado . . . . .	394	7.8	341	7.1
New Mexico . . . . .	180	6.7	158	5.8
Arizona . . . . .	873	10.5	570	7.6
Utah . . . . .	215	5.1	226	5.7
Nevada . . . . .	151	5.7	144	6.3
Pacific . . . . .	3,842	5.8	4,140	6.0
Washington . . . . .	406	5.2	385	4.8
Oregon . . . . .	261	6.0	235	5.4
California <sup>1</sup> . . . . .	3,002	5.8	3,348	6.3
Alaska . . . . .	70	7.0	69	7.1
Hawaii . . . . .	103	5.9	103	5.5
Puerto Rico <sup>2</sup> . . . . .	560	8.6	628	10.4

<sup>1</sup>Figures include adjustments for varying lengths of reporting periods; see [Technical notes](#).

<sup>2</sup>Data for Puerto Rico are not included in U.S. total figures.

NOTES: Figures include all revisions received from the States. Figures for the current year reflect revisions received for previous months, and figures for earlier years may differ from those previously published.

**Table 5. Provisional number of deaths and death rates, by age, race, and sex, and age-adjusted death rates by race and sex: United States, July 1996 and 1997, cumulative figures 1996 and 1997, and 12 months ending with July 1996 and 1997**

[Data are provisional, estimated from a 10-percent sample of deaths. Age-specific rates on an annual basis per 100,000 population in specified group; age-adjusted rates per 100,000 U.S. standard population; see [Technical notes](#). Because of rounding of estimates, figures may not add to totals. For method of computation and information on standard errors of the estimates, see [Technical notes](#)]

Age, race, and sex	July				January–July				12 months ending with July							
	1997		1996		1997		1996		1997		1996					
	Number	Rate	Number	Rate	Number	Rate	Number	Rate	Number	Rate	Number	Rate				
<b>All races, both sexes<sup>1</sup></b>																
All ages . . . . .	192,000	844.3	187,000	832.7	1,364,000	879.8	1,374,000	892.6	2,301,000	863.1	2,310,000	874.4				
Under 1 year . . . . .	} 3,720	75.7	3,770	76.6	15,400	<sup>2</sup> 711.9	16,500	<sup>2</sup> 734.3	27,000	<sup>2</sup> 722.4	28,400	<sup>2</sup> 738.2				
1–4 years . . . . .					3,150	35.4	3,770	41.4	5,230	34.0	6,170	39.5				
5–14 years . . . . .					5,100	22.7	5,170	23.1	8,730	22.6	8,800	22.9				
15–24 years . . . . .					3,220	103.6	3,260	107.1	18,490	87.3	19,490	93.3	32,640	89.7	34,660	96.5
25–34 years . . . . .					4,260	126.5	4,350	127.1	27,180	117.5	31,180	132.3	48,220	120.7	55,690	137.3
35–44 years . . . . .	8,280	221.5	7,920	216.2	52,470	205.8	57,170	227.9	91,720	209.4	100,570	233.9				
45–54 years . . . . .	12,480	437.0	12,110	442.3	84,670	437.3	82,950	444.7	144,520	436.6	141,850	444.8				
55–64 years . . . . .	19,720	1,064.6	18,960	1,048.7	136,090	1,081.1	138,840	1,121.3	231,680	1,071.5	235,040	1,106.6				
65–74 years . . . . .	39,050	2,486.5	39,500	2,495.9	271,420	2,521.3	284,220	2,610.1	464,320	2,502.0	474,510	2,533.4				
75–84 years . . . . .	55,170	5,551.5	52,810	5,455.4	397,120	5,872.7	394,040	5,965.6	661,820	5,703.9	656,210	5,803.6				
85 years and over . . . . .	45,900	13,953.9	44,300	14,003.4	352,550	15,814.5	340,440	15,786.8	584,200	15,297.2	565,520	15,321.6				
Not stated . . . . .	70	...	60	...	650	...	580	...	1,020	...	970	...				
Age-adjusted rate <sup>3</sup> . . . . .	...	480.7	...	478.8	...	486.5	...	503.8	...	481.8	...	496.9				
<b>All races, male<sup>1</sup></b>																
All ages . . . . .	97,230	873.9	94,570	861.9	681,320	897.5	694,530	923.5	1,151,960	882.7	1,170,780	907.3				
Under 1 year . . . . .	} 2,090	83.1	2,140	85.0	8,890	<sup>2</sup> 801.9	8,850	<sup>2</sup> 769.9	15,530	<sup>2</sup> 811.4	15,650	<sup>2</sup> 794.0				
1–4 years . . . . .					1,700	37.0	2,150	46.5	2,790	35.4	3,510	43.9				
5–14 years . . . . .					2,880	25.0	3,080	26.8	4,940	25.0	5,350	27.2				
15–24 years . . . . .					2,520	157.7	2,400	154.4	13,670	125.5	14,660	137.4	24,350	130.2	26,170	142.7
25–34 years . . . . .					2,910	172.8	2,910	170.3	19,200	165.9	22,020	187.0	34,210	171.2	39,690	195.8
35–44 years . . . . .	5,700	306.5	5,310	292.1	35,200	277.7	39,050	313.7	61,480	282.2	68,710	322.1				
45–54 years . . . . .	7,960	569.6	7,550	564.5	53,430	564.0	52,600	577.1	91,110	562.5	90,230	579.1				
55–64 years . . . . .	11,460	1,298.5	11,110	1,291.4	81,680	1,362.1	83,120	1,410.9	139,830	1,358.0	140,900	1,394.6				
65–74 years . . . . .	22,060	3,142.2	22,730	3,222.0	154,770	3,218.5	161,070	3,320.5	262,490	3,167.5	270,430	3,242.2				
75–84 years . . . . .	27,300	6,945.4	25,270	6,655.1	192,890	7,225.5	194,220	7,513.9	321,990	7,038.0	322,510	7,298.3				
85 years and over . . . . .	15,170	16,019.2	15,110	16,925.6	116,530	18,213.5	113,300	18,664.5	192,540	17,599.6	186,950	18,028.0				
Not stated . . . . .	60	...	30	...	480	...	420	...	690	...	680	...				
Age-adjusted rate <sup>3</sup> . . . . .	...	607.6	...	605.0	...	614.4	...	642.1	...	608.9	...	635.6				
<b>All races, female<sup>1</sup></b>																
All ages . . . . .	94,640	815.9	92,470	804.8	682,990	862.8	679,800	863.1	1,149,170	844.3	1,137,620	841.8				
Under 1 year . . . . .	} 1,630	68.0	1,630	67.9	6,550	<sup>2</sup> 617.7	7,630	<sup>2</sup> 696.9	11,510	<sup>2</sup> 629.3	12,770	<sup>2</sup> 679.6				
1–4 years . . . . .					1,460	33.3	1,620	36.5	2,440	32.5	2,660	34.9				
5–14 years . . . . .					2,230	20.3	2,090	19.0	3,780	20.0	3,450	18.4				
15–24 years . . . . .					700	46.4	860	57.7	4,820	46.9	4,840	47.3	8,290	46.9	8,490	48.3
25–34 years . . . . .					1,350	80.2	1,440	84.1	7,980	69.0	9,170	77.7	14,010	70.1	16,000	78.8
35–44 years . . . . .	2,580	137.3	2,600	140.9	17,260	134.7	18,120	143.4	30,250	137.4	31,860	147.1				
45–54 years . . . . .	4,530	310.7	4,560	325.6	31,240	315.9	30,350	318.1	53,410	316.0	51,610	316.4				
55–64 years . . . . .	8,260	851.8	7,840	827.3	54,400	825.1	55,720	858.3	91,850	811.0	94,140	845.4				
65–74 years . . . . .	16,990	1,956.4	16,770	1,911.7	116,660	1,958.6	123,150	2,039.3	201,830	1,965.0	204,070	1,964.1				
75–84 years . . . . .	27,870	4,640.1	27,540	4,681.1	204,220	4,990.6	199,820	4,970.3	339,830	4,836.1	333,700	4,845.4				
85 years and over . . . . .	30,720	13,119.4	29,190	12,854.5	236,010	14,851.2	227,140	14,661.1	391,660	14,372.8	378,570	14,269.5				
Not stated . . . . .	10	...	30	...	170	...	160	...	330	...	290	...				
Age-adjusted rate <sup>3</sup> . . . . .	...	373.4	...	373.7	...	379.3	...	389.2	...	375.2	...	381.5				
<b>White</b>																
All ages . . . . .	164,190	873.8	160,080	860.4	1,179,470	919.5	1,183,870	927.8	1,983,050	898.9	1,984,780	906.2				
Under 1 year . . . . .	} 2,820	72.6	2,410	62.0	10,300	<sup>2</sup> 599.2	10,740	<sup>2</sup> 614.3	17,660	<sup>2</sup> 595.2	18,760	<sup>2</sup> 624.1				
1–4 years . . . . .					2,360	33.2	2,530	35.5	3,760	30.8	4,220	34.2				
5–14 years . . . . .					3,860	21.8	3,640	20.4	6,550	21.4	6,400	21.0				
15–24 years . . . . .					2,210	89.4	2,130	87.9	13,000	77.1	13,600	81.6	23,040	79.6	24,580	85.9
25–34 years . . . . .					3,090	113.4	3,180	114.2	19,790	105.6	21,850	113.7	34,520	106.6	38,580	116.7
35–44 years . . . . .	6,000	193.4	5,670	186.0	38,120	180.1	41,090	196.8	66,850	183.8	72,350	202.1				
45–54 years . . . . .	9,540	392.6	9,270	396.9	65,310	396.3	63,100	396.2	110,890	393.5	108,270	397.5				
55–64 years . . . . .	16,010	1,004.2	15,160	971.9	109,760	1,012.5	112,760	1,055.1	187,360	1,005.7	190,610	1,039.5				
65–74 years . . . . .	33,540	2,422.1	34,330	2,451.6	234,920	2,472.8	247,210	2,563.6	400,870	2,446.7	411,750	2,481.3				
75–84 years . . . . .	49,090	5,459.5	47,230	5,380.9	357,930	5,849.1	353,980	5,910.6	594,760	5,663.3	589,170	5,746.3				
85 years and over . . . . .	41,850	14,066.5	40,660	14,127.4	323,720	16,046.9	312,960	15,949.9	536,080	15,507.1	519,340	15,465.8				
Not stated . . . . .	40	...	40	...	410	...	410	...	690	...	740	...				
Age-adjusted rate <sup>3</sup> . . . . .	...	456.8	...	451.0	...	464.6	...	477.9	...	458.6	...	470.8				

See footnotes at end of table.

**Table 5. Provisional number of deaths and death rates, by age, race, and sex, and age-adjusted death rates by race and sex: United States, July 1996 and 1997, cumulative figures 1996 and 1997, and 12 months ending with July 1996 and 1997—Con.**

[Data are provisional, estimated from a 10-percent sample of deaths. Age-specific rates on an annual basis per 100,000 population in specified group; age-adjusted rates per 100,000 U.S. standard population; see [Technical notes](#). Because of rounding of estimates, figures may not add to totals. For method of computation and information on standard errors of the estimates, see [Technical notes](#)]

Age, race, and sex	July				January–July				12 months ending with July			
	1997		1996		1997		1996		1997		1996	
	Number	Rate	Number	Rate	Number	Rate	Number	Rate	Number	Rate	Number	Rate
<b>White male</b>												
All ages . . . . .	82,300	890.1	80,170	877.9	583,080	923.9	592,120	945.5	982,900	905.7	996,060	926.7
Under 1 year . . . . .	} 1,590	79.7	1,430	71.7	6,000	<sup>2</sup> 680.9	5,820	<sup>2</sup> 647.9	10,190	<sup>2</sup> 670.0	10,540	<sup>2</sup> 683.1
1–4 years . . . . .					1,220	33.4	1,500	41.1	2,010	32.1	2,510	39.7
5–14 years . . . . .					2,170	23.7	2,150	23.6	3,710	23.6	3,910	25.0
15–24 years . . . . .	1,670	130.6	1,530	123.0	9,400	107.7	10,080	118.0	16,790	112.1	18,270	124.4
25–34 years . . . . .	2,100	152.4	2,190	155.9	14,100	149.0	15,800	163.0	24,710	150.9	28,130	168.6
35–44 years . . . . .	4,350	278.9	3,740	244.6	26,050	244.8	28,360	270.9	45,600	249.4	50,030	278.7
45–54 years . . . . .	6,000	499.0	5,890	510.5	41,280	506.2	40,310	512.5	70,240	503.8	69,560	517.1
55–64 years . . . . .	9,370	1,219.5	8,950	1,192.4	66,920	1,281.0	67,790	1,318.8	114,480	1,275.7	115,070	1,304.6
65–74 years . . . . .	19,060	3,054.1	20,020	3,183.4	134,850	3,152.3	141,210	3,262.5	227,920	3,090.9	235,870	3,168.6
75–84 years . . . . .	24,440	6,844.9	22,680	6,561.4	174,790	7,206.7	175,170	7,446.6	291,280	7,007.0	291,100	7,239.5
85 years and over . . . . .	13,670	16,111.4	13,720	16,997.3	105,940	18,468.5	103,620	18,879.5	175,430	17,882.8	170,520	18,179.1
Not stated . . . . .	40	...	20	...	360	...	310	...	520	...	550	...
Age-adjusted rate <sup>3</sup> . . . . .	...	574.3	...	569.8	...	585.4	...	607.6	...	578.2	...	600.8
<b>White female</b>												
All ages . . . . .	81,890	858.0	79,920	843.7	596,400	915.2	591,750	910.7	1,000,150	892.3	988,720	886.5
Under 1 year . . . . .	} 1,230	65.0	970	51.3	4,300	<sup>2</sup> 513.2	4,920	<sup>2</sup> 578.8	7,470	<sup>2</sup> 516.6	8,220	<sup>2</sup> 561.9
1–4 years . . . . .					1,140	32.8	1,030	29.8	1,750	29.5	1,710	28.5
5–14 years . . . . .					1,690	19.5	1,490	17.3	2,840	19.1	2,490	16.8
15–24 years . . . . .	540	45.2	610	51.7	3,600	44.5	3,520	43.4	6,250	44.7	6,300	45.2
25–34 years . . . . .	980	72.7	990	71.8	5,680	61.3	6,050	63.5	9,800	61.2	10,440	63.8
35–44 years . . . . .	1,640	106.3	1,920	126.4	12,080	114.7	12,730	122.3	21,250	117.5	22,310	125.1
45–54 years . . . . .	3,540	288.5	3,390	286.8	24,030	288.6	22,790	282.7	40,660	285.6	38,710	280.8
55–64 years . . . . .	6,640	804.0	6,210	767.4	42,840	762.6	44,970	810.9	72,880	754.8	75,550	793.9
65–74 years . . . . .	14,480	1,903.6	14,300	1,853.7	100,070	1,916.4	106,000	1,994.1	172,950	1,919.5	175,890	1,922.3
75–84 years . . . . .	24,650	4,547.0	24,550	4,613.9	183,140	4,957.1	178,810	4,917.3	303,480	4,783.0	298,080	4,783.1
85 years and over . . . . .	28,180	13,250.7	26,950	13,013.6	217,780	15,084.9	209,340	14,812.8	360,650	14,565.8	348,820	14,414.0
Not stated . . . . .	—	...	20	...	50	...	100	...	170	...	190	...
Age-adjusted rate <sup>3</sup> . . . . .	...	356.7	...	352.1	...	362.9	...	370.1	...	357.8	...	361.9
<b>Black</b>												
All ages . . . . .	23,630	820.1	23,490	825.0	160,220	815.5	167,740	860.5	276,730	819.7	285,700	854.8
Under 1 year . . . . .	} 730	95.9	1,080	140.1	4,680	<sup>2</sup> 1,426.1	5,160	<sup>2</sup> 1,408.0	8,520	<sup>2</sup> 1,510.6	8,780	<sup>2</sup> 1,402.6
1–4 years . . . . .					690	50.1	1,060	74.7	1,260	53.6	1,670	67.9
5–14 years . . . . .					1,000	28.1	1,240	36.2	1,720	28.4	1,940	32.6
15–24 years . . . . .	780	165.2	1,040	224.1	4,590	143.0	5,120	161.1	8,110	146.7	8,630	157.8
25–34 years . . . . .	990	216.9	1,000	218.2	6,550	209.4	8,400	266.0	12,080	223.9	15,470	285.9
35–44 years . . . . .	1,990	430.9	2,030	451.9	12,930	411.3	14,630	476.0	22,430	415.6	25,710	488.6
45–54 years . . . . .	2,590	853.2	2,420	838.4	17,130	833.1	17,480	890.7	29,670	845.1	29,840	890.5
55–64 years . . . . .	3,210	1,708.6	3,350	1,834.5	23,190	1,821.6	23,050	1,844.2	39,270	1,798.9	39,230	1,829.8
65–74 years . . . . .	4,740	3,392.7	4,560	3,296.8	31,300	3,281.7	32,360	3,415.1	55,010	3,356.3	54,900	3,376.4
75–84 years . . . . .	5,140	7,012.7	4,900	6,862.6	33,260	6,664.4	35,040	7,172.4	57,160	6,669.8	58,670	7,009.6
85 years and over . . . . .	3,430	13,783.4	3,090	12,891.1	24,690	14,617.3	24,050	14,738.8	41,200	14,206.9	40,630	14,510.7
Not stated . . . . .	30	...	20	...	220	...	170	...	310	...	230	...
Age-adjusted rate <sup>3</sup> . . . . .	...	709.9	...	731.6	...	706.2	...	754.6	...	713.6	...	751.3
<b>Black male</b>												
All ages . . . . .	12,440	909.3	12,560	929.6	84,270	903.4	89,820	971.1	145,720	909.1	153,750	969.5
Under 1 year . . . . .	} 390	100.9	560	143.2	2,580	<sup>2</sup> 1,555.6	2,710	<sup>2</sup> 1,463.4	4,760	<sup>2</sup> 1,664.3	4,600	<sup>2</sup> 1,451.1
1–4 years . . . . .					420	61.0	560	77.1	690	57.9	860	69.0
5–14 years . . . . .					590	33.0	740	41.9	1,010	32.9	1,150	38.1
15–24 years . . . . .	640	270.1	810	348.8	3,610	224.8	4,040	253.5	6,450	232.6	6,820	249.2
25–34 years . . . . .	670	309.4	600	276.5	4,440	299.3	5,640	378.2	8,280	323.7	10,530	411.0
35–44 years . . . . .	1,170	540.9	1,420	676.8	8,240	560.7	9,640	671.5	14,340	567.7	17,010	692.6
45–54 years . . . . .	1,720	1,250.9	1,420	1,085.8	10,790	1,156.7	11,010	1,238.2	18,580	1,167.8	18,610	1,225.1
55–64 years . . . . .	1,760	2,158.6	1,920	2,419.2	12,940	2,340.4	13,550	2,493.1	22,340	2,359.0	22,870	2,453.9
65–74 years . . . . .	2,580	4,415.3	2,440	4,217.8	16,990	4,264.0	17,300	4,374.1	29,840	4,356.2	30,040	4,430.7
75–84 years . . . . .	2,350	8,673.8	2,270	8,673.3	14,970	8,141.4	16,450	9,193.8	25,510	8,098.4	27,250	8,876.2
85 years and over . . . . .	1,150	15,744.6	1,120	16,325.0	8,570	17,331.7	8,090	17,238.5	13,740	16,164.7	13,880	17,135.8
Not stated . . . . .	20	...	10	...	110	...	110	...	160	...	130	...
Age-adjusted rate <sup>3</sup> . . . . .	...	927.6	...	956.5	...	920.4	...	1,000.1	...	931.5	...	998.5

See footnotes at end of table.

**Table 5. Provisional number of deaths and death rates, by age, race, and sex, and age-adjusted death rates by race and sex: United States, July 1996 and 1997, cumulative figures 1996 and 1997, and 12 months ending with July 1996 and 1997—Con.**

[Data are provisional, estimated from a 10-percent sample of deaths. Age-specific rates on an annual basis per 100,000 population in specified group; age-adjusted rates per 100,000 U.S. standard population; see [Technical notes](#). Because of rounding of estimates, figures may not add to totals. For method of computation and information on standard errors of the estimates, see [Technical notes](#)]

Age, race, and sex	July				January–July				12 months ending with July			
	1997		1996		1997		1996		1997		1996	
	Number	Rate	Number	Rate	Number	Rate	Number	Rate	Number	Rate	Number	Rate
Black female												
All ages . . . . .	11,190	739.5	10,930	730.5	75,960	736.1	77,920	760.6	131,010	738.8	131,950	751.3
Under 1 year . . . . .	} 340	90.6	520	136.9	2,090	<sup>2</sup> 1,293.0	2,450	<sup>2</sup> 1,362.3	3,760	<sup>2</sup> 1,352.5	4,180	<sup>2</sup> 1,352.8
1–4 years . . . . .					260	38.8	500	70.8	560	48.4	810	66.7
5–14 years . . . . .					410	23.7	510	29.8	710	23.8	790	26.9
15–24 years . . . . .					140	59.5	230	99.2	980	60.5	1,080	69.1
25–34 years . . . . .	320	133.4	410	169.9	2,100	127.7	2,760	166.4	3,800	133.9	4,950	173.7
35–44 years . . . . .	820	334.0	610	254.7	4,680	280.4	4,980	304.8	8,090	281.8	8,700	310.0
45–54 years . . . . .	870	524.0	990	627.1	6,350	564.9	6,460	601.8	11,080	577.1	11,230	613.0
55–64 years . . . . .	1,450	1,363.6	1,420	1,375.3	10,250	1,421.1	9,500	1,343.9	16,920	1,368.9	16,360	1,349.8
65–74 years . . . . .	2,160	2,657.5	2,120	2,634.7	14,310	2,579.1	15,070	2,726.3	25,170	2,638.4	24,860	2,622.4
75–84 years . . . . .	2,780	6,017.0	2,630	5,814.8	18,290	5,799.4	18,590	6,003.1	31,650	5,839.5	31,420	5,928.3
85 years and over . . . . .	2,280	12,968.7	1,980	11,572.7	16,110	13,493.4	15,960	13,737.1	27,470	13,400.0	26,750	13,442.2
Not stated . . . . .	10	...	10	...	110	...	60	...	150	...	100	...
Age-adjusted rate <sup>3</sup> . . . . .	...	541.0	...	556.8	...	540.4	...	565.3	...	543.6	...	560.4

... Category not applicable.

– Quantity zero

<sup>1</sup>Includes races other than white and black.

<sup>2</sup>Death rates under 1 year (based on population estimates) differ from infant mortality rates (based on live births); see [table 9](#) for infant mortality rates.

<sup>3</sup>For method of computation, see [Technical notes](#).

NOTES: Figures include all revisions received from the States. Cumulative and 12-month figures for the current year reflect revisions received for previous months, and figures for earlier years may differ from those previously published.

**Table 6. Provisional number of deaths and death rates for 72 selected causes, Human immunodeficiency virus infection, and Alzheimer's disease: United States, July 1996 and 1997, cumulative figures 1996 and 1997, and 12 months ending with July 1996 and 1997**

[Data are provisional, estimated from a 10-percent sample of deaths. Rates on an annual basis per 100,000 estimated population. Because of rounding of estimates, figures may not add to totals. For method of computation and information on standard errors of the estimates, see [Technical notes](#). For explanation of asterisks preceding cause-of-death categories, see [Technical notes](#)]

Cause of death (Based on the <i>Ninth Revision, International Classification of Diseases, 1975</i> )	July		July		January–July		January–July		12 months ending with July		12 months ending with July	
	1997		1996		1997		1996		1997		1996	
	Number	Rate	Number	Rate	Number	Rate	Number	Rate	Number	Rate	Number	Rate
All causes . . . . .	192,000	844.3	187,000	832.7	1,364,000	879.8	1,374,000	892.6	2,301,000	863.1	2,310,000	874.4
Shigellosis and amebiasis . . . . .	—	*	—	*	—	*	—	*	—	*	—	*
Certain other intestinal infections . . . . .	50	*	90	*	470	0.3	500	0.3	790	0.3	740	0.3
Tuberculosis . . . . .	80	*	50	*	620	0.4	550	0.3	1,080	0.4	1,130	0.4
Tuberculosis of respiratory system . . . . .	50	*	30	*	490	0.3	440	0.3	850	0.3	920	0.3
Other tuberculosis . . . . .	30	*	20	*	130	0.1	110	0.1	230	0.1	210	0.1
Whooping cough . . . . .	—	*	—	*	20	*	10	*	20	*	20	*
Streptococcal sore throat, scarlatina, and erysipelas . . . . .	—	*	—	*	—	*	—	*	—	*	—	*
Meningococcal infection . . . . .	20	*	20	*	210	0.1	190	0.1	290	0.1	250	0.1
Septicemia . . . . .	1,920	8.4	1,710	7.6	13,130	8.5	12,980	8.4	21,810	8.2	21,240	8.0
Acute poliomyelitis . . . . .	—	*	—	*	—	*	—	*	—	*	—	*
Measles . . . . .	—	*	—	*	10	*	—	*	10	*	—	*
Viral hepatitis . . . . .	410	1.8	250	1.1	2,450	1.6	2,120	1.4	4,140	1.6	3,600	1.4
Syphilis . . . . .	—	*	—	*	40	*	—	*	70	*	30	*
All other infectious and parasitic diseases <sup>1</sup> . . . . .	1,880	8.3	2,870	12.8	13,750	8.9	24,110	15.7	27,580	10.3	44,370	16.8
Malignant neoplasms, including neoplasms of lymphatic and hematopoietic tissues . . . . .	47,240	207.9	45,440	202.3	310,260	200.1	315,320	204.8	537,270	201.5	538,760	203.9
Malignant neoplasms of lip, oral cavity, and pharynx . . . . .	810	3.6	720	3.2	4,530	2.9	4,580	3.0	7,800	2.9	7,890	3.0
Malignant neoplasms of digestive organs and peritoneum . . . . .	10,610	46.7	10,340	46.0	72,210	46.6	73,380	47.7	125,680	47.1	126,020	47.7
Malignant neoplasms of respiratory and intrathoracic organs . . . . .	13,680	60.2	12,690	56.5	90,760	58.5	92,180	59.9	157,630	59.1	156,820	59.4
Malignant neoplasm of breast . . . . .	3,530	15.5	3,790	16.9	23,710	15.3	25,690	16.7	41,550	15.6	43,870	16.6
Malignant neoplasms of genital organs . . . . .	5,770	25.4	5,120	22.8	35,140	22.7	35,020	22.7	60,360	22.6	60,290	22.8
Malignant neoplasms of urinary organs . . . . .	2,040	9.0	1,930	8.6	14,070	9.1	13,250	8.6	23,860	8.9	22,480	8.5
Malignant neoplasms of all other and unspecified sites . . . . .	5,840	25.7	5,700	25.4	36,970	23.8	38,450	25.0	64,780	24.3	65,840	24.9
Leukemia . . . . .	1,930	8.5	1,780	7.9	12,100	7.8	12,290	8.0	20,150	7.6	20,320	7.7
Other malignant neoplasms of lymphatic and hematopoietic tissues . . . . .	3,030	13.3	3,370	15.0	20,760	13.4	20,490	13.3	35,470	13.3	35,230	13.3
Benign neoplasms, carcinoma in situ, and neoplasms of uncertain behavior and of unspecified nature . . . . .	570	2.5	640	2.8	4,500	2.9	4,760	3.1	7,390	2.8	7,830	3.0
Diabetes mellitus . . . . .	5,490	24.1	5,270	23.5	36,380	23.5	36,520	23.7	61,330	23.0	59,500	22.5
Nutritional deficiencies . . . . .	250	1.1	390	1.7	2,090	1.3	2,380	1.5	3,500	1.3	4,060	1.5
Anemias . . . . .	390	1.7	330	1.5	2,450	1.6	2,260	1.5	4,160	1.6	3,970	1.5
Meningitis . . . . .	20	*	—	*	390	0.2	350	0.2	630	0.2	580	0.2
Major cardiovascular diseases . . . . .	76,530	336.8	74,720	332.7	559,290	360.7	563,770	366.2	937,160	351.5	940,940	356.2
Diseases of heart . . . . .	59,510	261.9	58,320	259.6	430,800	277.8	438,540	284.8	721,410	270.6	730,870	276.7
Rheumatic fever and rheumatic heart disease . . . . .	290	1.3	430	1.9	2,690	1.7	3,020	2.0	4,520	1.7	4,900	1.9
Hypertensive heart disease . . . . .	2,260	9.9	2,300	10.2	15,740	10.1	15,810	10.2	25,950	9.7	25,590	9.7
Hypertensive heart and renal disease . . . . .	160	0.7	210	0.9	1,320	0.8	1,320	0.9	2,220	0.8	2,220	0.8
Ischemic heart disease . . . . .	37,710	165.9	37,780	168.2	276,900	178.6	283,430	184.1	466,480	175.0	473,820	179.4
Acute myocardial infarction . . . . .	16,790	73.9	17,100	76.1	123,810	79.8	128,600	83.5	209,100	78.4	215,070	81.4
Other acute and subacute forms of ischemic heart disease . . . . .	210	0.9	280	1.2	1,750	1.1	1,580	1.0	2,860	1.1	2,610	1.0
Angina pectoris . . . . .	60	*	60	*	390	0.2	480	0.3	590	0.2	790	0.3
Old myocardial infarction and other forms of chronic ischemic heart disease . . . . .	20,640	90.8	20,340	90.6	150,950	97.3	152,770	99.2	253,920	95.2	255,340	96.7
Other diseases of endocardium . . . . .	1,220	5.4	1,370	6.1	10,030	6.5	9,980	6.5	16,530	6.2	16,140	6.1
All other forms of heart disease . . . . .	17,860	78.6	16,240	72.3	124,120	80.0	124,980	81.2	205,700	77.2	208,190	78.8
Hypertension with or without renal disease . . . . .	1,210	5.3	770	3.4	8,000	5.2	7,160	4.6	13,030	4.9	12,010	4.5
Cerebrovascular diseases . . . . .	12,310	54.2	12,320	54.8	94,280	60.8	93,680	60.8	159,160	59.7	156,410	59.2
Intracerebral and other intracranial hemorrhage . . . . .	2,050	9.0	1,770	7.9	14,610	9.4	13,440	8.7	24,680	9.3	22,070	8.4
Cerebral thrombosis and unspecified occlusion of cerebral arteries . . . . .	1,020	4.5	930	4.1	7,230	4.7	7,040	4.6	12,650	4.7	12,340	4.7
Cerebral embolism . . . . .	50	*	60	*	290	0.2	380	0.2	710	0.3	690	0.3
All other and late effects of cerebrovascular diseases . . . . .	9,190	40.4	9,560	42.6	72,160	46.5	72,820	47.3	121,120	45.4	121,310	45.9

See footnotes at end of table.

**Table 6. Provisional number of deaths and death rates for 72 selected causes, Human immunodeficiency virus infection, and Alzheimer's disease: United States, July 1996 and 1997, cumulative figures 1996 and 1997, and 12 months ending with July 1996 and 1997—Con.**

[Data are provisional, estimated from a 10-percent sample of deaths. Rates on an annual basis per 100,000 estimated population. Because of rounding of estimates, figures may not add to totals. For method of computation and information on standard errors of the estimates, see [Technical notes](#). For explanation of asterisks preceding cause-of-death categories, see [Technical notes](#)]

Cause of death (Based on the <i>Ninth Revision, International Classification of Diseases, 1975</i> )	July		July		January–July		January–July		12 months ending with July		12 months ending with July		
	1997		1996		1997		1996		1997		1996		
	Number	Rate	Number	Rate	Number	Rate	Number	Rate	Number	Rate	Number	Rate	
Major cardiovascular diseases—Con.													
Atherosclerosis . . . . .	440	1,120	4.9	1,350	6.0	9,650	6.2	9,290	6.0	15,940	6.0	15,690	5.9
Other diseases of arteries, arterioles, and capillaries . . . . .	.441–448	2,390	10.5	1,960	8.7	16,560	10.7	15,110	9.8	27,630	10.4	25,960	9.8
Acute bronchitis and bronchiolitis . . . . .	.466	20	*	—	*	370	0.2	290	0.2	490	0.2	420	0.2
Pneumonia and influenza . . . . .	.480–487	5,380	23.7	5,300	23.6	53,260	34.3	50,570	32.8	84,240	31.6	80,420	30.4
Pneumonia . . . . .	.480–486	5,370	23.6	5,300	23.6	52,490	33.8	50,120	32.6	83,260	31.2	79,890	30.2
Influenza . . . . .	.487	10	*	—	*	770	0.5	450	0.3	980	0.4	530	0.2
Chronic obstructive pulmonary diseases and allied conditions . . . . .	.490–496	8,580	37.7	8,200	36.5	67,140	43.3	65,610	42.6	107,000	40.1	104,200	39.4
Bronchitis, chronic and unspecified . . . . .	.490–491	180	0.8	210	0.9	1,960	1.3	2,070	1.3	2,830	1.1	3,050	1.2
Emphysema . . . . .	.492	1,280	5.6	1,220	5.4	11,020	7.1	10,570	6.9	17,250	6.5	16,680	6.3
Asthma . . . . .	.493	410	1.8	400	1.8	3,250	2.1	2,900	1.9	5,500	2.1	4,980	1.9
Other chronic obstructive pulmonary diseases and allied conditions . . . . .	.494–496	6,710	29.5	6,370	28.4	50,910	32.8	50,060	32.5	81,420	30.5	79,490	30.1
Ulcer of stomach and duodenum . . . . .	.531–533	450	2.0	280	1.2	3,060	2.0	2,950	1.9	4,900	1.8	5,250	2.0
Appendicitis . . . . .	.540–543	40	*	30	*	200	0.1	280	0.2	400	0.2	420	0.2
Hernia of abdominal cavity and intestinal obstruction without mention of hernia . . . . .	.550–553,560	430	1.9	500	2.2	3,600	2.3	3,780	2.5	6,270	2.4	6,040	2.3
Chronic liver disease and cirrhosis . . . . .	.571	2,230	9.8	2,010	8.9	14,830	9.6	14,320	9.3	24,970	9.4	24,370	9.2
Cholelithiasis and other disorders of gallbladder . . . . .	.574–575	230	1.0	300	1.3	1,610	1.0	1,580	1.0	2,710	1.0	2,670	1.0
Nephritis and nephrotic syndrome, and nephrosis . . . . .	.580–589	2,070	9.1	2,100	9.3	15,650	10.1	15,980	10.4	26,650	10.0	26,210	9.9
Acute glomerulonephritis and nephrotic syndrome . . . . .	.580–581	30	*	20	*	170	0.1	120	0.1	270	0.1	230	0.1
Chronic glomerulonephritis, nephritis and nephropathy, not specified as acute or chronic, and renal sclerosis, unspecified . . . . .	.582–583,587	160	0.7	120	0.5	980	0.6	1,010	0.7	1,770	0.7	1,650	0.6
Renal failure, disorders resulting from impaired renal function, and small kidney of unknown cause . . . . .	.584–586,588–589	1,880	8.3	1,970	8.8	14,500	9.3	14,850	9.6	24,610	9.2	24,330	9.2
Infections of kidney . . . . .	.590	40	*	90	*	400	0.2	610	0.4	700	0.3	850	0.3
Hyperplasia of prostate . . . . .	.600	20	*	20	*	250	0.2	260	0.2	400	0.2	430	0.2
Complications of pregnancy, childbirth, and the puerperium . . . . .	.630–676	40	*	20	*	140	0.1	180	0.1	240	0.1	370	0.1
Pregnancy with abortive outcome . . . . .	.630–638	10	*	10	*	40	*	20	*	40	*	40	*
Other complications of pregnancy, childbirth, and the puerperium . . . . .	.640–676	30	*	10	*	100	*	160	0.1	200	0.1	330	0.1
Congenital anomalies . . . . .	.740–759	1,090	4.8	800	3.6	6,820	4.4	6,700	4.3	11,590	4.3	11,550	4.4
Certain conditions originating in the perinatal period . . . . .	.760–779	990	4.3	1,160	5.2	6,920	4.4	7,570	4.9	12,250	4.6	12,970	4.9
Birth trauma, intrauterine hypoxia, birth asphyxia, and respiratory distress syndrome . . . . .	.767–769	100	*	210	0.9	1,110	0.7	1,190	0.8	2,070	0.8	2,030	0.8
Other conditions originating in the perinatal period . . . . .	.760–766,770–779	890	3.9	950	4.2	5,810	3.7	6,380	4.1	10,180	3.8	10,940	4.1
Symptoms, signs, and ill-defined conditions . . . . .	.780–799	3,950	17.4	3,690	16.4	27,130	17.5	24,620	16.0	44,280	16.6	42,420	16.1
All other diseases . . . . .	.Residual	17,960	79.0	17,990	80.1	137,220	88.5	130,070	84.5	226,190	84.8	217,760	82.4
Accidents and adverse effects . . . . .	.E800–E949	8,900	39.2	8,240	36.7	51,130	33.0	52,340	34.0	89,550	33.6	91,790	34.7
Motor vehicle accidents . . . . .	.E810–E825	4,310	19.0	3,680	16.4	24,390	15.7	24,670	16.0	43,410	16.3	44,730	16.9
All other accidents and adverse effects . . . . .	.E800–E807,E826–E949	4,590	20.2	4,560	20.3	26,730	17.2	27,670	18.0	46,140	17.3	47,060	17.8
Suicide . . . . .	.E950–E959	2,520	11.1	2,600	11.6	16,460	10.6	17,400	11.3	29,230	11.0	29,380	11.1
Homicide and legal intervention . . . . .	.E960–E978	1,800	7.9	1,730	7.7	10,720	6.9	12,050	7.8	19,550	7.3	21,580	8.2
All other external causes . . . . .	.E980–E999	300	1.3	170	0.8	1,340	0.9	1,360	0.9	2,300	0.9	2,290	0.9
Human immunodeficiency virus infection <sup>2</sup> . . . . .	*042–*044	1,410	6.2	2,300	10.2	10,350	6.7	20,440	13.3	21,150	7.9	38,030	14.4
Alzheimer's disease . . . . .	.331.0	1,580	6.9	1,730	7.7	13,780	8.9	12,980	8.4	22,730	8.5	21,570	8.2

– Quantity zero. \* Figure does not meet standards of reliability or precision; see [Technical notes](#).  
<sup>1</sup>Includes data for deaths due to Human immunodeficiency virus infection (categories \*042–\*044) shown separately below; see [Technical notes](#).  
<sup>2</sup>Included in All other infectious and parasitic diseases shown above.

NOTES: Figures include all revisions received from the States. Cumulative and 12-month figures for the current year reflect revisions received for previous months, and figures for earlier years may differ from those previously published.

**Table 7. Provisional number of deaths and death rates for 16 selected subcategories of Malignant neoplasms, including neoplasms of lymphatic and hematopoietic tissues: United States, July 1996 and 1997, cumulative figures 1996 and 1997, and 12 months ending with July 1996 and 1997**

[Data are provisional, estimated from a 10-percent sample of deaths. Rates on an annual basis per 100,000 estimated population. Because of rounding of estimates, figures may not add to totals. For method of computation and information on standard errors of the estimates, see [Technical notes](#)]

Cause of death (Based on the <i>Ninth Revision, International Classification of Diseases, 1975</i> )	July				January–July				12 months ending with July			
	1997		1996		1997		1996		1997		1996	
	Number	Rate	Number	Rate	Number	Rate	Number	Rate	Number	Rate	Number	Rate
Malignant neoplasms, including neoplasms of lymphatic and hematopoietic tissues <sup>1</sup> . . . . .140–208	47,240	207.9	45,440	202.3	310,260	200.1	315,320	204.8	537,270	201.5	538,760	203.9
Malignant neoplasm of esophagus . . . . .150	950	4.2	740	3.3	6,340	4.1	6,410	4.2	11,070	4.2	10,590	4.0
Malignant neoplasm of stomach . . . . .151	1,030	4.5	1,230	5.5	7,410	4.8	7,730	5.0	13,080	4.9	13,540	5.1
Malignant neoplasms of colon, rectum, rectosigmoid junction, and anus . . . . .153,154	4,790	21.1	4,840	21.5	32,080	20.7	33,100	21.5	56,230	21.1	56,260	21.3
Malignant neoplasm of pancreas . . . . .157	2,330	10.2	2,140	9.5	15,800	10.2	16,040	10.4	27,360	10.3	27,610	10.5
Malignant neoplasms of trachea, bronchus, and lung . . . . .162	13,440	59.1	12,190	54.3	88,080	56.8	89,070	57.8	152,770	57.3	151,480	57.3
Malignant melanoma of skin . . . . .172	630	2.8	710	3.2	4,180	2.7	4,100	2.7	7,110	2.7	6,800	2.6
Malignant neoplasm of cervix uteri . . . . .180	470	2.1	410	1.8	2,630	1.7	2,500	1.6	4,610	1.7	4,740	1.8
Malignant neoplasms of body of uterus and of uterus, part unspecified . . . . .179,182	820	3.6	470	2.1	3,710	2.4	3,360	2.2	6,140	2.3	6,030	2.3
Malignant neoplasm of ovary . . . . .183.0	1,160	5.1	1,180	5.2	8,090	5.2	7,920	5.1	13,670	5.1	13,540	5.1
Malignant neoplasm of prostate . . . . .185	3,070	13.5	2,930	13.0	19,670	12.7	20,160	13.1	34,000	12.8	34,140	12.9
Malignant neoplasm of bladder . . . . .188	1,160	5.1	890	4.0	7,060	4.6	6,530	4.2	11,790	4.4	11,120	4.2
Malignant neoplasms of kidney and other and unspecified urinary organs . . . . .189	880	3.9	1,050	4.7	7,010	4.5	6,710	4.4	12,060	4.5	11,360	4.3
Malignant neoplasms of brain and other and unspecified parts of nervous system . . . . .191,192	870	3.8	980	4.4	6,270	4.0	6,760	4.4	11,100	4.2	11,870	4.5
Hodgkin's disease . . . . .201	160	0.7	140	0.6	840	0.5	930	0.6	1,380	0.5	1,550	0.6
Malignant lymphoma other than Hodgkin's disease . . . . .200,202	2,040	9.0	2,300	10.2	14,030	9.0	13,310	8.6	23,900	9.0	23,220	8.8
Multiple myeloma and other immunoproliferative neoplasms . . . . .203	830	3.6	930	4.1	5,880	3.8	6,250	4.1	10,200	3.8	10,460	4.0

<sup>1</sup>Includes figures for subcategories not shown below.

NOTES: Figures include all revisions received from the States. Cumulative and 12-month figures for the current year reflect revisions received for previous months, and figures for earlier years may differ from those previously published.

**Table 8. Provisional number of deaths and death rates for firearm mortality: United States, July 1996 and 1997, cumulative figures 1996 and 1997, and 12 months ending with July 1996 and 1997**

[Data are provisional, estimated from a 10-percent sample of deaths. Rates on an annual basis per 100,000 estimated population. Because of rounding of estimates, figures may not add to totals. For method of computation and information on standard errors of the estimates, see [Technical notes](#)]

Cause of death (Based on the <i>Ninth Revision, International Classification of Diseases, 1975</i> )	July				January–July				12 months ending with July			
	1997		1996		1997		1996		1997		1996	
	Number	Rate	Number	Rate	Number	Rate	Number	Rate	Number	Rate	Number	Rate
Injury by firearms . . . . .E922,E955.0–E955.4,E965.0–965.4,E970,E985.0–E985.4	2,830	12.4	2,770	12.3	18,280	11.8	20,030	13.0	32,720	12.3	35,070	13.3
Accident caused by firearm missile . . . . .E922	90	*	100	*	640	0.4	700	0.4	1,270	0.5	1,390	0.5
Suicide by firearms . . . . .E955.0–E955.4	1,500	6.6	1,500	6.7	9,890	6.4	10,740	7.0	17,490	6.6	18,090	6.8
Homicide and legal intervention by firearms . . . . .E965.0–E965.4,E970	1,220	5.4	1,170	5.2	7,630	4.9	8,450	5.5	13,760	5.2	15,350	5.8
Injury by firearms, undetermined whether accidentally or purposely inflicted . . . . .E985.0–E985.4	20	*	–	*	120	0.1	130	0.1	200	0.1	240	0.1

\* Figure does not meet standards of reliability or precision; see [Technical notes](#).  
 – Quantity zero.

NOTES: Figures include all revisions received from the States. Cumulative and 12-month figures for the current year reflect revisions received for previous months, and figures for earlier years may differ from those previously published.



**Table 9. Provisional number of deaths under 1 year and infant mortality rates, by age and for 10 selected causes: United States, July 1996 and 1997, cumulative figures 1996 and 1997, and 12 months ending with July 1996 and 1997**

[Data are provisional, estimated from a 10-percent sample of deaths. Rates on an annual basis per 100,000 live births. Because of rounding of estimates, figures may not add to totals. For method of computation and information on standard errors of the estimates, see [Technical notes](#)]

Age and cause of death (Based on the <i>Ninth Revision, International Classification of Diseases, 1975</i> )	July				January–July				12 months ending with July			
	1997		1996		1997		1996		1997		1996	
	Number	Rate	Number	Rate	Number	Rate	Number	Rate	Number	Rate	Number	Rate
Total, under 1 year . . . . .	2,200	663.3	2,300	680.3	15,400	694.8	16,500	738.3	27,000	698.5	28,400	738.9
Under 28 days . . . . .	1,570	465.5	1,650	491.1	9,770	439.7	10,810	484.4	17,430	450.2	18,590	483.3
28 days–11 months . . . . .	660	195.7	640	190.5	5,660	254.7	5,660	253.6	9,610	248.2	9,830	255.6
Certain gastrointestinal diseases . . . . .	20	*	40	*	130	5.9	140	6.3	200	5.2	210	5.5
Pneumonia and influenza . . . . .	10	*	20	*	150	6.8	210	9.4	270	7.0	350	9.1
Congenital anomalies . . . . .	660	195.7	450	133.9	3,680	165.6	3,680	164.9	6,520	168.4	6,230	162.0
Disorders relating to short gestation and unspecified low birthweight . . . . .	320	94.9	290	86.3	1,820	81.9	2,280	102.2	3,110	80.3	3,570	92.8
Birth trauma . . . . .	–	*	20	*	40	*	130	5.8	80	*	250	6.5
Intrauterine hypoxia and birth asphyxia . . . . .	10	*	80	*	280	12.6	360	16.1	440	11.4	550	14.3
Respiratory distress syndrome . . . . .	80	*	100	*	710	32.0	670	30.0	1,440	37.2	1,150	29.9
Other conditions originating in the perinatal period . . . . .	570	169.0	660	196.4	3,900	175.5	4,050	181.5	6,950	179.5	7,300	189.8
Sudden infant death syndrome . . . . .	100	*	120	35.7	1,100	49.5	1,630	73.0	2,070	53.5	2,730	71.0
All other causes . . . . .	470	139.4	520	154.8	3,640	163.8	3,320	148.8	5,970	154.2	6,090	158.3

\* Figure does not meet standards of reliability or precision; see [Technical notes](#).

– Quantity zero.

NOTES: Figures include all revisions received from the States. Cumulative and 12-month figures for the current year reflect revisions received for previous months, and figures for earlier years may differ from those previously published.

## Technical notes

### Nature and sources of data

Data in this report are provisional unless otherwise specified and include only events occurring within the United States (50 States and the District of Columbia). Mortality data exclude fetal deaths. Data for the Commonwealth of Puerto Rico are not included in the U.S. totals.

Birth, death, and infant death figures in [tables 2](#) and [4](#) for each State are estimates by State of residence. These estimates are derived by applying adjustment ratios to the actual counts of certificates for all events occurring in the State and received in registration offices during a 1-month period regardless of date of the event. The adjustment ratios for each data year represent the observed relationship between final State occurrence figures and final State residence figures for the three most recent years for which final data were available and are expressed as a single ratio for each State. As in previous years, monthly State marriage and divorce figures represent the actual count of all events occurring in the State (State of occurrence) that were received in the registration offices during the 1-month period. Delay in the receipt of certificates in a registration office may result in a low State figure for a given month followed by a high figure for the month(s) in which the delayed records are received. Data for previous months and cumulative data include revised figures received from the States.

Figures for births, deaths, and infant deaths for California in [tables 2](#) and [4](#) contain adjustments for varying lengths of State reporting periods. Figures for Texas for all events shown in [tables 2–4](#) also are adjusted for varying lengths of State reporting periods. The figures for both States are adjusted by the ratio between the number of days in the data month and the number of days in the State reporting period. The adjusted figures are included in the U.S. totals shown elsewhere in this report.

U.S. totals for births, deaths, and infant deaths are based on the State estimates by State of residence and, therefore, in effect, exclude events to nonresidents of the United States. Events to nonresidents of the United States are included in all

marriage and divorce figures. The effect of excluding events to nonresidents from the U.S. totals is small.

Provisional totals for the United States include estimates for State data shown as not available. Provisional totals for births and marriages for the entire United States include adjustments for observed differences between provisional and final monthly figures.

Divorce figures include reported annulments. The monthly national divorce estimate is obtained by multiplying the total for the reporting areas by the ratio observed between the most recent final annual divorce total for the United States and the provisional total for the reporting areas combined.

*Random variation*—Although the counts in this report are not subject to sampling variability (except the Current Mortality Sample), they may be affected by random variation. When the number of events is small and the probability of such an event is small, considerable caution must be observed in interpreting the data. Such infrequent events may be assumed to follow a Poisson probability distribution. For this distribution a simple approximation may be used to estimate the random variation as follows:

If  $N$  is the number of events in the population and  $R$  is the corresponding rate, the chances are 19 in 20 that

$$1. N - 2\sqrt{N} \text{ and } N + 2\sqrt{N}$$

covers the “true” number of events.

$$2. R - 2 \frac{R}{\sqrt{N}} \text{ and } R + 2 \frac{R}{\sqrt{N}}$$

covers the “true” rate.

If the rate  $R_1$  corresponding to  $N_1$  events is compared with the rate  $R_2$  corresponding to  $N_2$  events, the difference between the two rates may be regarded as statistically significant at the 0.05 level if it exceeds

$$2 \sqrt{\frac{R_1^2}{N_1} + \frac{R_2^2}{N_2}}$$

Additional information on random variation in numbers of events, rates, and ratios may be found in the technical appendixes of *Vital Statistics of the United States, 1992, Volumes I and II*.

### Rates

Rates are on an annual basis and, except for infant mortality rates, are per 1,000 or 100,000 estimated population residing in the United States. The populations used for computing these rates are furnished by the U.S. Bureau of the Census. Rates shown in this report beginning with 1992 were computed using populations based on the 1990 Census enumeration comparable to those used for final data. Monthly rates are based on populations estimated for the specific month. Year-to-date rates are averages of monthly rates that have been weighted by the number of days in the corresponding months. Rates for 12-month periods are the sum of events for the period per population estimated at the midpoint of the period.

Infant mortality rates are deaths under 1 year of age for the specified period (monthly, year-to-date, or 12-month period) per 1,000 or 100,000 live births. Births used for computing monthly and year-to-date infant mortality rates are adjusted for monthly variation in the number of births. Births used to compute 12-month rates do not contain this adjustment. Births used for computing infant mortality rates are not corrected for observed differences between provisional and final monthly figures as described earlier in “[Nature and sources of data.](#)” Because monthly infant mortality rates are based on relatively few events, they are highly variable. Therefore, comparisons of monthly infant mortality rates should be interpreted cautiously; see “[Random variation.](#)”

Age-adjusted death rates are used to compare relative mortality risks across groups and over time. However, they should be viewed as constructs or indexes rather than as direct or actual measures of mortality risk. Statistically, they are weighted averages of the age-specific death rates, where the weights represent the fixed population proportions by age. See chapter 5 of an earlier report (1). The age-adjusted death rates presented in this report were computed by the direct method, that is, by applying age-specific death rates to the U.S. standard million population (2). See also chapter 10 of an earlier report (1). Age groups in [table 5](#) were used to compute the age-adjusted

rates shown in that table. It is important not to compare age-adjusted rates with crude rates.

### Current Mortality Sample

The Current Mortality Sample (CMS) is a 10-percent systematic sample of death certificates drawn each month after the certificates are counted in the State registration offices. Deaths and death rates for the United States by age, race, sex, and cause are estimated based on the sample. Because of the additional time required to select and process the certificates, data based on the CMS are published 1 month after publication of the U.S. and State counts. Complete information concerning the underlying cause of death sometimes is not available when the sample is drawn. As a result estimates based on sample counts for certain causes are biased. Correction for bias is not made in this report.

Estimated numbers of deaths based on the sample were proportionately adjusted to be consistent with estimates based on the count of death certificates received in State registration offices.

*HIV infection*—Beginning with data for 1987, the National Center for Health Statistics introduced categories \*042–\*044 for classifying and coding Human immunodeficiency virus (HIV) infection. The asterisks before the categories indicate that these codes are not part of the

*Ninth Revision, International Classification of Diseases*. Deaths classified to these categories are included in All other infectious and parasitic diseases in the List of 72 Selected Causes of Death and are also shown separately at the bottom of table 6.

*Sampling variability*—Because the estimates of deaths and death rates presented in this report with the exception of total deaths and deaths under 1 year are based on a sample of death certificates, they are subject to sampling variability. The estimated relative standard error in the following table is a measure of the

**Relative standard errors for estimated numbers of deaths from the Current Mortality Sample expressed as a percent of the estimate**

Estimated number of deaths	Relative standard error of estimate (as percent)	
	170,000 estimated deaths each month	2,000,000 estimated deaths each year
10 . . . . .	94.9	94.9
20 . . . . .	67.1	67.1
50 . . . . .	42.4	42.4
100 . . . . .	30.0	30.0
200 . . . . .	21.2	21.2
500 . . . . .	13.4	13.4
1,000 . . . . .	9.5	9.5
2,000 . . . . .	6.7	6.7
5,000 . . . . .	4.2	4.2
10,000 . . . . .	2.9	3.0
20,000 . . . . .	2.0	2.1
50,000 . . . . .	1.1	1.3
100,000 . . . . .	0.6	0.9
200,000 . . . . .	...	0.6
500,000 . . . . .	...	0.4
1,000,000 . . . . .	...	0.2

sampling error of the estimated number of deaths (or of the estimated death rate) expressed as a percent of the estimate. The first column refers to monthly estimates; the second to annual; cumulative year-to-date totals fall between the two.

The chances are about 2 in 3 that the percent difference between an estimate and the result of a complete count is less than the percent shown. The chances are about 19 in 20 that the percent difference is less than twice the percent shown. A figure based on 100 or fewer estimated deaths has a relative standard error of 30 percent or more and is, therefore, considered unreliable. A rate based on 100 or fewer estimated deaths has been replaced by an asterisk.

Unless otherwise specified comparisons made in the text between death rates based on the CMS were statistically significant at the 0.05 level of significance. Lack of comment in the text about any two rates does not mean that the difference was tested and found not to be significant at this level.

### References

1. Feinleib M, Zarate AO, eds. Reconsidering age adjustment procedures: Workshop proceedings. National Center for Health Statistics. Vital Health Stat 4(29). 1992.
2. Grove RD, Hetzel AM. Vital statistics rates in the United States, 1940–1960. Public Health Service. Washington: National Center for Health Statistics. 1968.

---

**Suggested citation**

National Center for Health Statistics. Births, marriages, divorces, and deaths for August 1997. Monthly vital statistics report; vol 46 no 8. Hyattsville, Maryland: National Center for Health Statistics. 1998.

---

**Copyright information**

All material appearing in this report is in the public domain and may be reproduced or copied without permission; citation as to source, however, is appreciated.

---

**National Center for Health Statistics**

Director  
Edward J. Sondik, Ph.D.

Deputy Director  
Jack R. Anderson

**Division of Vital Statistics**

Director  
Mary Anne Freedman

---

DEPARTMENT OF  
HEALTH & HUMAN SERVICES

Centers for Disease Control and Prevention  
National Center for Health Statistics  
6525 Belcrest Road  
Hyattsville, Maryland 20782-2003

FIRST CLASS MAIL  
POSTAGE & FEES PAID  
PHS/NCHS  
PERMIT NO. G-281

---

OFFICIAL BUSINESS  
PENALTY FOR PRIVATE USE, \$300

---

To receive this publication regularly, contact the National Center for Health Statistics by calling 301-436-8500  
E-mail: [nchsquery@cdc.gov](mailto:nchsquery@cdc.gov)  
Internet: [www.cdc.gov/nchswww/](http://www.cdc.gov/nchswww/)

---

DHHS Publication No. (PHS) 98-1120  
8-0434 (4/98)