

**VITAL and HEALTH STATISTICS**

**DATA FROM THE NATIONAL VITAL STATISTICS SYSTEM**

# **Suicide**

# **in the United States**

# **1950 - 1964**

A study of suicide statistics showing trends for 1950-64 and differences by age, sex, color, marital status, and geographic area for selected periods.

---

U.S. DEPARTMENT OF  
HEALTH, EDUCATION, AND WELFARE  
Public Health Service  
Health Resources Administration  
National Center for Health Statistics  
Rockville, Maryland



Public Health Service Publication No. 1000-Series 20-No. 5

For sale by the Superintendent of Documents, U.S. Government Printing Office  
Washington, D.C. 20402 - Price 30 cents

# NATIONAL CENTER FOR HEALTH STATISTICS

FORREST E. LINDER, PH.D., *Director*  
THEODORE D. WOOLSEY, *Deputy Director*  
OSWALD K. SAGEN, PH.D., *Assistant Director for State Relations*  
WALT R. SIMMONS, M.A., *Statistical Advisor*  
PHILIP S. LAWRENCE, Sc.D., *Planning Officer*  
ALICE M. WATERHOUSE, M.D., *Medical Consultant*  
JAMES E. KELLY, D.D.S., *Dental Advisor*  
LOUIS R. STOLCIS, M.A., *Executive Officer*  
DONALD GREEN, *Information Officer*

## DIVISION OF VITAL STATISTICS

ROBERT D. GROVE, PH.D., *Director*  
ANDERS S. LUNDE, PH.D., *Assistant Director*  
ROBERT A. ISRAEL, M.S., *Chief, Mortality Statistics Branch*  
ARTHUR A. CAMPBELL, *Chief, Natality Statistics Branch*  
CHARLES R. COUNCIL, *Chief, Registration Methods Branch*  
ARTHUR A. CAMPBELL, *Acting Chief, Marriage and Divorce Statistics Branch*  
ALICE M. HETZEL, *Chief, Statistical Resources Section*

|  | Page |
|--|------|
| Means of Injury-----                   | 1    |
| Seasonal Variation-----                | 3    |
| Age, Color, and Sex Differentials----- | 4    |
| Geographic Variation-----              | 6    |
| Marital Status-----                    | 7    |
| Trends-----                            | 8    |
| Qualifications of Data-----            | 8    |
| Cause of Death-----                    | 9    |
| Ranking Causes of Death-----           | 10   |
| Race -----                             | 10   |
| Marital Status-----                    | 10   |
| Geographic Classification-----         | 10   |
| Rates -----                            | 10   |
| Population Bases-----                  | 11   |
| Bibliography-----                      | 12   |
| Detailed Tables-----                   | 13   |

*Suicide, even though suspected of being understated in the cause-of-death statistics, has been among the 12 leading causes of death in the United States for the past 10 years. In this report, the trends for suicide are reviewed and the rates for age, color, sex, marital status, and other groups are examined.*

*Firearms are more frequently used for committing suicide than any other means. Hanging and strangulation rank second. The means used to commit suicide have changed over the years. Analgesic and soporific substances and motor vehicle exhaust gas are used more frequently, while gases in domestic use for cooking, heating, or lighting are now used less. The method varies by sex and, to a lesser extent, by color.*

*Suicides are more frequent in the spring than in any other season. April nearly always has the highest daily average number and December the lowest.*

*Suicides are much more frequent among males than among females and more frequent in the white population than in the nonwhite. The rates for white males generally increase with successive age groups up through 85 years and over, while for white females they reach a peak in the 45-54 or 55-64 age group. Rates for nonwhite persons show different and less decided patterns.*

*As for marital status, the suicide rate (age-adjusted) is lowest for married persons. Single persons rank next, followed by widowed and, last, divorced persons.*

*The suicide rates (using the 1959-61 average) for the southern States, with the exceptions of Virginia and Florida, were among the lowest in the United States, while those for the western States were among the highest. In 1960 there were six standard metropolitan statistical areas with a suicide rate of more than 15 suicides for every 100,000 people. Five of these six areas were in two States—California and Florida.*

*The age-adjusted suicide rate was the same in 1964 as in 1950 but, in general, the rates were a little lower for the 1950's than for the 1960's (through 1964). The age-specific rates show upward trends for the younger and middle ages, with a downward trend for the older ages.*

#### SYMBOLS

|  |     |
|--|-----|
| Data not available-----  | --- |
| Category not applicable-----   | ... |
| Quantity zero-----   | -   |
| Quantity more than 0 but less than 0.05-----   | 0.0 |
| Age-specific rates based on fewer than 20 deaths or age-adjusted rates where more than half of the age-specific rates are based on fewer than 20 deaths----- | *   |

# SUICIDE IN THE UNITED STATES

James T. Massey, *Division of Vital Statistics*

Cause-of-death statistics for 1964 show an average of 56 suicides committed daily in the United States. The 20,588 reported suicides represented about 1 percent of all deaths occurring in the United States during the year. The rate was 10.8 per 100,000 population. Since 1900, the suicide rate has ranged from a high of 17.4 in 1932 to a low of 9.8 in 1957. It has not exceeded 12.0 per 100,000 since 1941 (fig. 1).

Suicide has been among the 12 leading causes of death for the past 10 years. It has been even more prominent among teenagers and young adults. It ranked fourth in 1964 for age groups 15-24 and 25-44 years. (Of course, this high rank for these age groups reflects the smaller number of deaths from most other causes, as well as the actual number of suicides.) Although suicide was of less importance as a cause of death in the upper age groups, where deaths from other causes are more numerous, it remained one of the 10 leading causes through the age group 45-64 years.

Suicide is suspected of being grossly understated in the statistics based on cause-of-death certification. A general reluctance to admit suicidal intent of friends and relatives and difficulties in recognizing it under certain circumstances undoubtedly result in underreporting. Various estimates have been made of the actual occurrence of suicide, some indicating that it is as much as

twice the reported figure. In addition, many attempts at suicide are unsuccessful. Although there are no national statistics on this topic, at least one study (Farberow and Shneidman, *The Cry for Help*) places the ratio of unsuccessful attempts at suicide to committed suicide in the neighborhood of 8 to 1.

Detailed statistics on which this report is based are presented in tables 1-7. They show the trends of suicide by age, color, and sex for the years 1950-64 and data for the 3 years 1959-61 by marital status and geographic area.

## MEANS OF INJURY

Firearms and explosives are more frequently used for committing suicide than any other means of injury. This category, comprised principally of deaths attributed to self-inflicted gunshot wounds, accounted for 48 percent of all suicides in 1964. Hanging and strangulation was the next most frequent means and accounted for about 15 percent of the total suicides. About 12 percent were from poisoning by analgesic and soporific substances. Nearly three-fourths of these involved the use of barbituric acid and its derivatives. The only other category which accounted for more than 10 percent of the suicides in 1964 was "poisoning by other gases." Of these, 9 out of 10 involved motor vehicle exhaust gas.

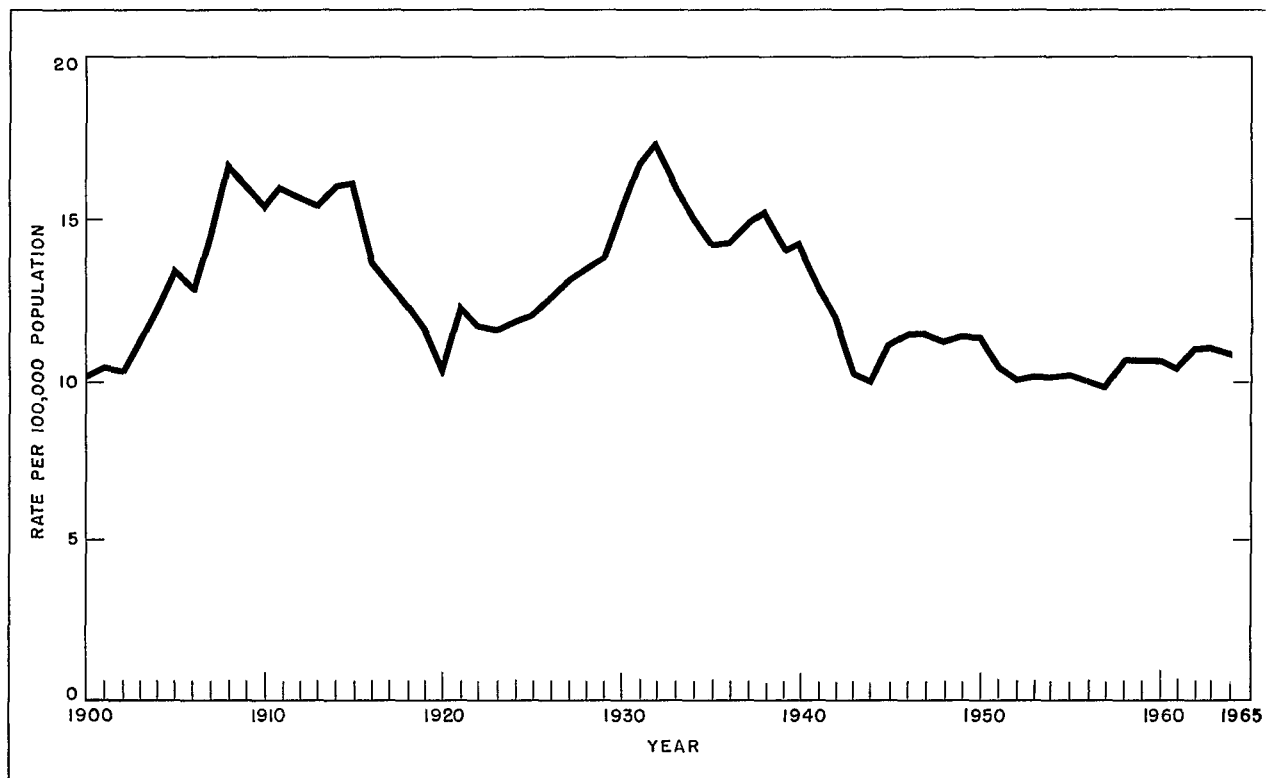


Figure 1. Suicide rates: Death Registration States, 1900-1932, and United States, 1933-64.

The means selected for committing suicide have changed over the years. The direction of this change is indicated in table A, which shows the percentage distribution of deaths from suicide by means of injury for 1950, 1960, and 1964. While the total suicide rate was about the same for these 3 years (11.4 per 100,000 in 1950, 10.6 in 1960, and 10.8 in 1964), decided differences were observed in the methods used.

The classification "suicide by firearm and explosive" ranked far above all others for each of the 3 years shown. It accounted for 43 percent of all suicides in 1950 and 48 percent in 1964. Hanging and strangulation ranked second for the 3 years but declined from 21 percent of the total in 1950 to 15 percent in 1964. Poisoning by analgesic and soporific substances increased between 1950 and 1964, from about 5 percent of total suicides to 12 percent. Poisoning by other

gases (predominantly motor vehicle exhaust gas) also increased, accounting for about 6 percent of total suicides in 1950 and 11 percent in 1964. On the other hand, suicides committed by poisoning by gases in domestic use accounted for over 6 percent of all suicides in 1950 and less than one-half of 1 percent in 1964.

The choice of a way to commit suicide varies by sex. For instance, analgesic and soporific substances were used by only 6 percent of males committing suicide, compared with 30 percent of females. Except for suicides from poisoning by other gases (which includes motor vehicle exhaust gases), poisonous substances were used by a greater percentage of females than of males. Also, a greater percentage of females drowned themselves. Firearms and explosives accounted for 56 percent of all suicides for males, but only 25 percent of those for females. Other means of

Table A. Percentage distribution of suicides by means of injury: United States, 1950, 1960, and 1964

| Means of injury  | 1964                    | 1960  | 1950  |
|--|-------------------------|-------|-------|
|  | Percentage distribution |       |       |
| Total-----   | 100.0                   | 100.0 | 100.0 |
| Late effect of self-inflicted injury-----                      | 0.0                     | 0.1   | 0.0   |
| Suicide from poisoning by analgesic and soporific substances-- | 12.4                    | 8.5   | 4.7   |
| Suicide from poisoning by other solid and liquid substances--  | 3.3                     | 3.9   | 5.8   |
| Suicide from poisoning by gases in domestic use-----           | 0.4                     | 1.0   | 6.5   |
| Suicide from poisoning by other gases-----                     | 10.8                    | 9.4   | 6.2   |
| Suicide by hanging and strangulation-----                      | 14.6                    | 17.7  | 21.0  |
| Suicide by submersion (drowning)-----                          | 2.6                     | 3.2   | 3.9   |
| Suicide by firearm and explosive-----                          | 47.6                    | 47.4  | 43.0  |
| Suicide by cutting and piercing instrument-----                | 1.9                     | 2.6   | 3.1   |
| Suicide by jumping from high place-----                        | 3.7                     | 3.7   | 3.7   |
| Suicide by other and unspecified means-----                    | 2.7                     | 2.7   | 2.1   |

suicide varied by sex but the differences were negligible.

Methods differ according to color as well as sex, but the differences between the white and non-white populations are not so great as those between males and females. As shown in table B, a greater percentage of white than of nonwhite persons poisoned themselves with analgesic and soporific substances (12.7 compared with 5.3) and with "other" gases (11.3 and 2.8). Conversely, nonwhite persons were more likely than white persons to use other solid and liquid substances (such as denatured alcohol, rat poison, or lye) as a poison (5.3 compared with 3.2) and to kill themselves by jumping from high places (8.6 versus 3.4).

## SEASONAL VARIATION

Suicides are more frequent in the spring than in any other season. When the number of suicides per day by each month is computed (to eliminate length of month as a factor influencing the number of suicides for a given month), March, April, and May have the highest averages. April had the highest daily average in 10 of the 15 years from 1950 through 1964, May and June the highest for 2 years, and March for 1 year. The months with the lowest number of suicides per day are the winter months—November, December and January. An average for the 15 years shows the number of suicides ranging from 46 per day for December to 54 per day for April (fig. 2).



Table B. Percentage distribution of suicides by means of injury according to color and sex: United States, 1964

| Means of injury   | Total                   |       |        | White      |       |        | Nonwhite   |       |        |
|---|-------------------------|-------|--------|------------|-------|--------|------------|-------|--------|
|   | Both sexes              | Male  | Female | Both sexes | Male  | Female | Both sexes | Male  | Female |
|   | Percentage distribution |       |        |            |       |        |            |       |        |
| Total-----  | 100.0                   | 100.0 | 100.0  | 100.0      | 100.0 | 100.0  | 100.0      | 100.0 | 100.0  |
| Late effect of self-inflicted injury-----                         | 0.0                     | 0.0   | 0.0    | 0.0        | 0.0   | 0.0    | 0.2        | 0.3   | -      |
| Suicide from poisoning by analgesic and soporific substances----- | 12.4                    | 5.8   | 30.2   | 12.7       | 6.0   | 31.0   | 5.3        | 2.4   | 14.3   |
| Suicide from poisoning by other solid and liquid substances-----  | 3.3                     | 2.1   | 6.7    | 3.2        | 2.1   | 6.4    | 5.3        | 2.9   | 12.7   |
| Suicide from poisoning by gases in domestic use-----              | 0.4                     | 0.4   | 0.6    | 0.4        | 0.4   | 0.6    | -          | -     | -      |
| Suicide from poisoning by other gases-----                        | 10.8                    | 11.6  | 8.7    | 11.3       | 12.1  | 9.0    | 2.8        | 3.4   | 0.8    |
| Suicide by hanging and strangulation-----                         | 14.6                    | 15.3  | 12.7   | 14.5       | 15.1  | 12.7   | 17.0       | 18.3  | 12.7   |
| Suicide by submersion (drowning)-----                             | 2.6                     | 2.0   | 4.4    | 2.4        | 1.8   | 4.1    | 6.9        | 5.2   | 12.4   |
| Suicide by firearm and explosive-----                             | 47.6                    | 55.7  | 25.4   | 47.6       | 55.8  | 25.2   | 48.3       | 54.0  | 30.3   |
| Suicide by cutting and piercing instrument-----                   | 1.9                     | 2.0   | 1.5    | 1.9        | 2.0   | 1.5    | 1.6        | 1.9   | 0.8    |
| Suicide by jumping from high place-----                           | 3.7                     | 3.2   | 5.0    | 3.4        | 2.9   | 4.7    | 8.6        | 8.1   | 10.4   |
| Suicide by other and unspecified means-----                       | 2.7                     | 1.9   | 4.8    | 2.6        | 1.9   | 4.7    | 4.0        | 3.5   | 5.6    |

## AGE, COLOR, AND SEX DIFFERENTIALS

Suicide rates for the United States increase with age at least until the 65-74-year age group is reached. This was true for each year from 1950 through 1964. For some of the years the rates fluctuated slightly at the 65-74 and subsequent age groups (75-84 and 85 and over). Deaths of children under 8 years of age are not tabulated as due to suicide, regardless of the information entered on the death certificate.

Age-specific rates exhibit different patterns by color and sex (see fig. 3). In 1964, the suicide

rates for white males increased with each successive age group, starting with a rate of 0.5 per 100,000 at ages 5-14 years and continuing to 65.1 per 100,000 for the 85-years-and-over age group. A similar relationship was observed throughout the 1950-64 period. The suicide rates for white females present a different pattern. They reached a peak in the 45-54 or 55-64 age group and decreased thereafter. For nonwhite males, suicide rates showed much less uniformity. In 1964 the rate was highest for the age group 25-34 years. For other years it reached a peak among persons in their 60's, 70's, or 80's, but the rate for the 25-34-year

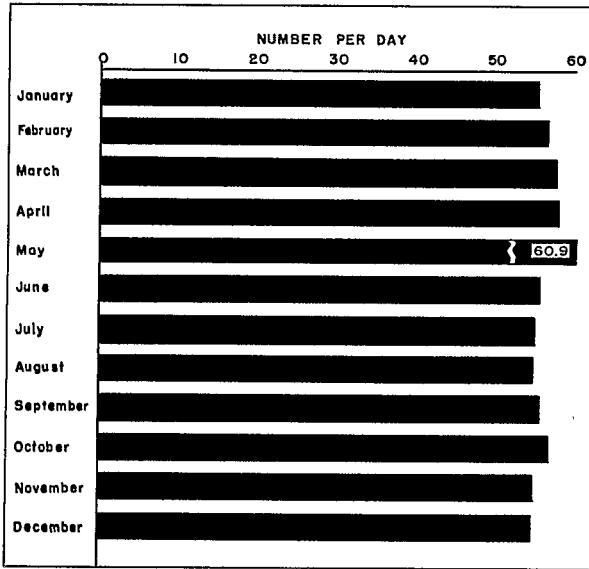


Figure 2. Number of suicides per day for each month: 1964.

group was generally as high as or a little higher than the rates for the middle-aged groups. The age-specific rates for nonwhite females followed no set pattern, but in 1964 all rates were under 5 per 100,000.

Suicides occur much more frequently among males than among females. The rate for males was almost three times that for females in 1964. Seventy-three percent of the persons committing suicide in the United States in that year were males. In 1950 this percentage was 78 percent. There is evidence, however, that a much larger proportion of the unsuccessful attempts at suicide are made by women. In a study by Farberow and Shneidman (reported in *The Cry for Help*), based on statistics for Los Angeles County in 1957, 70 percent of the suicides were committed by males while almost 70 percent of the persons unsuccessfully attempting suicide were females. Other studies support these percentages.

Suicide also occurs more frequently in the white population than in the nonwhite. In 1964, the ratio between rates for white and nonwhite persons was 2 to 1.

In 1960, the nonwhite population made up 11 percent of the total population, yet committed

Table C. Suicide rates by race: United States, 1960

| Race               | Rate per 100,000 population |      |        |
|--------------------|-----------------------------|------|--------|
|                    | Both sexes                  | Male | Female |
| All races-----     | 10.6                        | 16.5 | 4.9    |
| White-----         | 11.4                        | 17.6 | 5.3    |
| Negro-----         | 3.9                         | 6.4  | 1.6    |
| Other nonwhite---- | 11.1                        | 15.3 | 6.4    |

only 5 percent of the suicides. However, when Negroes were excluded, the remaining nonwhite population had suicide rates which were almost equivalent to the white suicide rates (table C). In fact, the nonwhite female population, excluding Negroes, had a higher suicide rate than the white female population. The rate for nonwhite males, excluding Negroes, was a little less than that for white males.

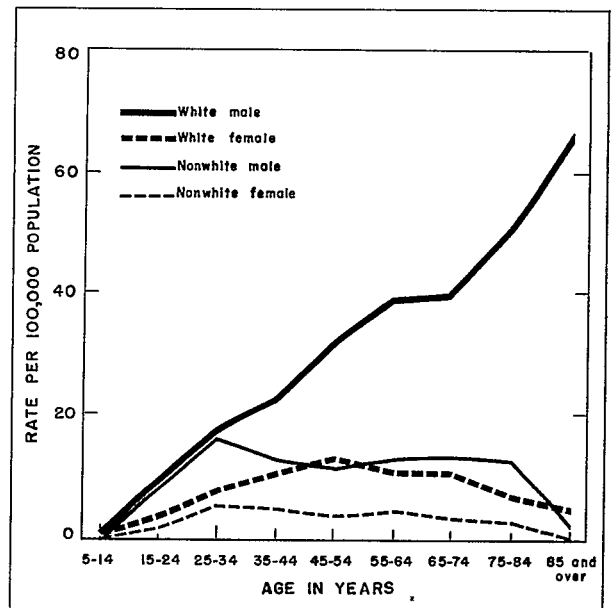


Figure 3. Suicide rates, by color, sex, and age: 1964.



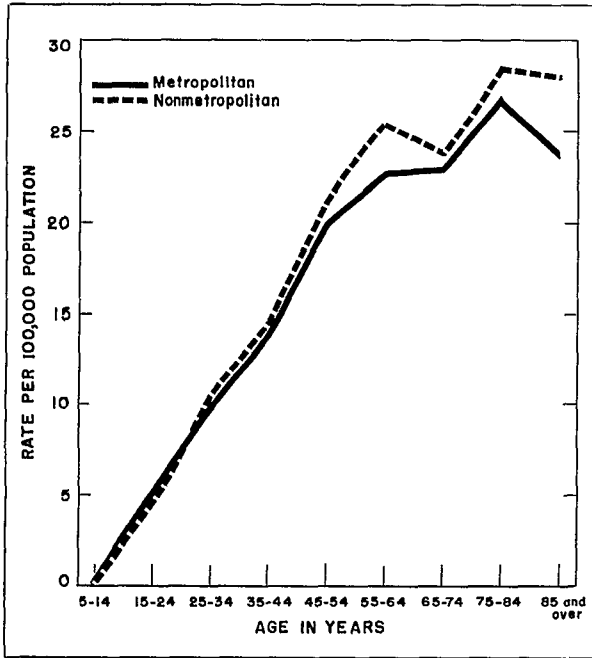


Figure 5. Suicide rates for metropolitan and nonmetropolitan counties, by age: 1959-61 (3-year average).

For the standard metropolitan statistical areas in 1960 with a population of 500,000 or more, suicide rates ranged from 6.7 for Providence, Rhode Island, to 17.3 for Tampa-St. Petersburg, Florida. There were six SMSA's with rates higher than 15 suicides per 100,000 and all but one are in California and Florida. Most of the statistical areas with low suicide rates are located in the northeastern and southern sections of the country.

### MARITAL STATUS

The age-specific suicide rates (1959-61) for married persons were lower than those for the single, widowed, or divorced (fig. 6). This was true of all age groups except for the 15-19, 80-84, and the 85-years-and-over groups. Divorced persons showed the highest suicide rates— from three to five times the rates for married persons under 65 and from two to three times greater in age groups over 65. The rates for widowed persons were eight times those for married persons at ages 20-24, but this ratio gradually declined with age and the rates were almost identical after reaching age 60. Suicide

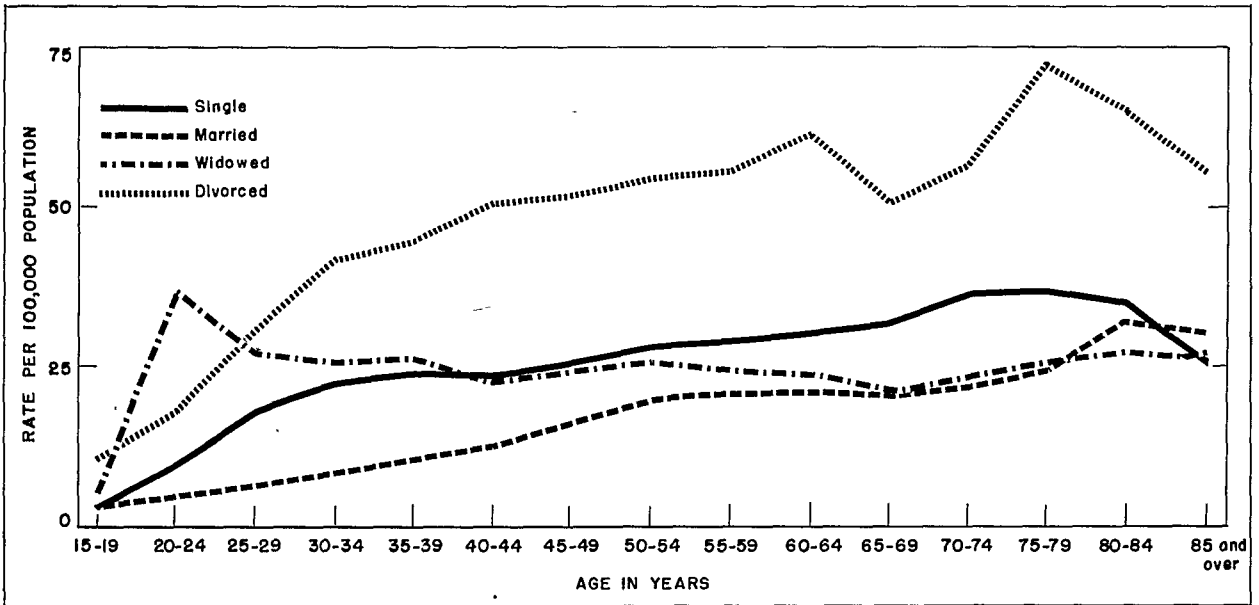


Figure 6. Suicide rates by marital status and age: 1959-61 (3-year average)

rates for single persons in most age groups ranged from 1½ to 2½ times those for married persons.

Total suicide rates, for persons 15 years of age and over, which are not adjusted for age show single persons with the lowest rate. This results from the disproportionate number of single persons (as contrasted with the married, widowed, and divorced persons) in the population at the younger ages where suicide rates are lowest. When the rates are adjusted for age, they show that married persons do indeed have the lowest suicide rate, with the single, widowed, and divorced ranking next, in that order. The age-adjusted rates for persons 15 years and over are 11.9 for married, 20.9 for single, 23.8 for widowed, and 39.9 for divorced persons. (However, of the four color-sex groups, only white females showed a higher rate for the divorced than for the widowed.)

The suicide rates (age-adjusted) for males varied from three to four times the rates for females, with the exception of the widowed where the rate for males was over six times that for females. The suicide rates for white persons were approximately twice as large as the rates for nonwhite persons, with the exception of divorced persons for whom the rate for white persons was over four times that for nonwhite.

## TRENDS

The age-adjusted suicide rate was the same in 1964 as it had been in 1950. It was slightly lower for white males and slightly higher for white females, nonwhite males, and nonwhite females. However, review of the age-adjusted rates for the intervening years shows that, in general, rates were a little lower for the 1950's than for the 1960's (through 1964) for all four color-sex groups (fig. 7).

The sex differential narrowed between 1950 and 1964. The ratio between suicide rates for white males and white females declined from 3½ to 1 in 1950 to a little less than 3 to 1 in 1964. A similar decline occurred among the nonwhite population. The suicide rate for nonwhite males was four times the rate for nonwhite females in 1950, declining to three and one-third times in 1964.

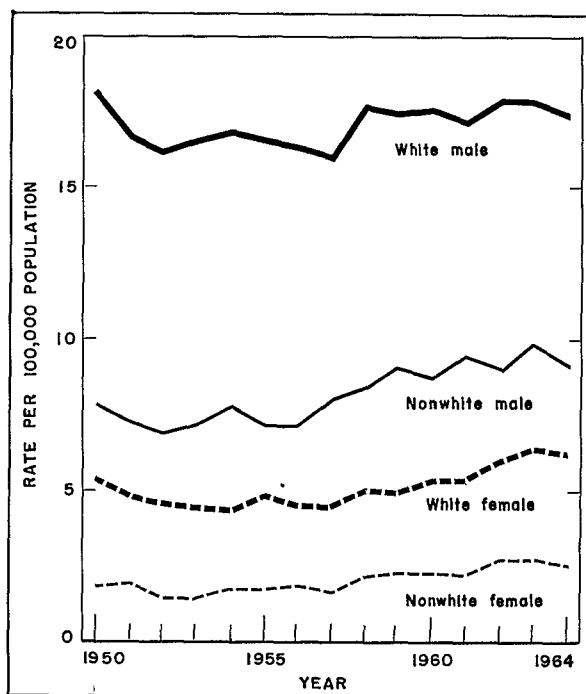


Figure 7. Age-adjusted suicide rates, by color and sex: 1950-64.

The age-specific rates for the 1950-64 period show opposite trends for the younger and the older age groups. Figure 8 shows a slightly upward trend for the younger and middle ages, and a slightly downward trend for the older ages.

Suicide rates in 1964 for both white males and white females were generally higher than in 1950 at the younger ages and lower at the older ages. The rate for nonwhite males was higher in 1964 for all age groups except the 55-64, 65-74, and the 85-years-and-over age groups. Likewise, the suicide rate for nonwhite females was higher in 1964 for all age groups with the exception of the 5-14, 45-54, and the 75-84 age groups.

## QUALIFICATIONS OF DATA

The rates shown in this report are based on deaths occurring in the United States, with Alaska added in 1959, and Hawaii in 1960. Alaska and Hawaii are included in all of the 3-year-average rates for 1959-61. Deaths among nonresident aliens in the United States are included. Deaths

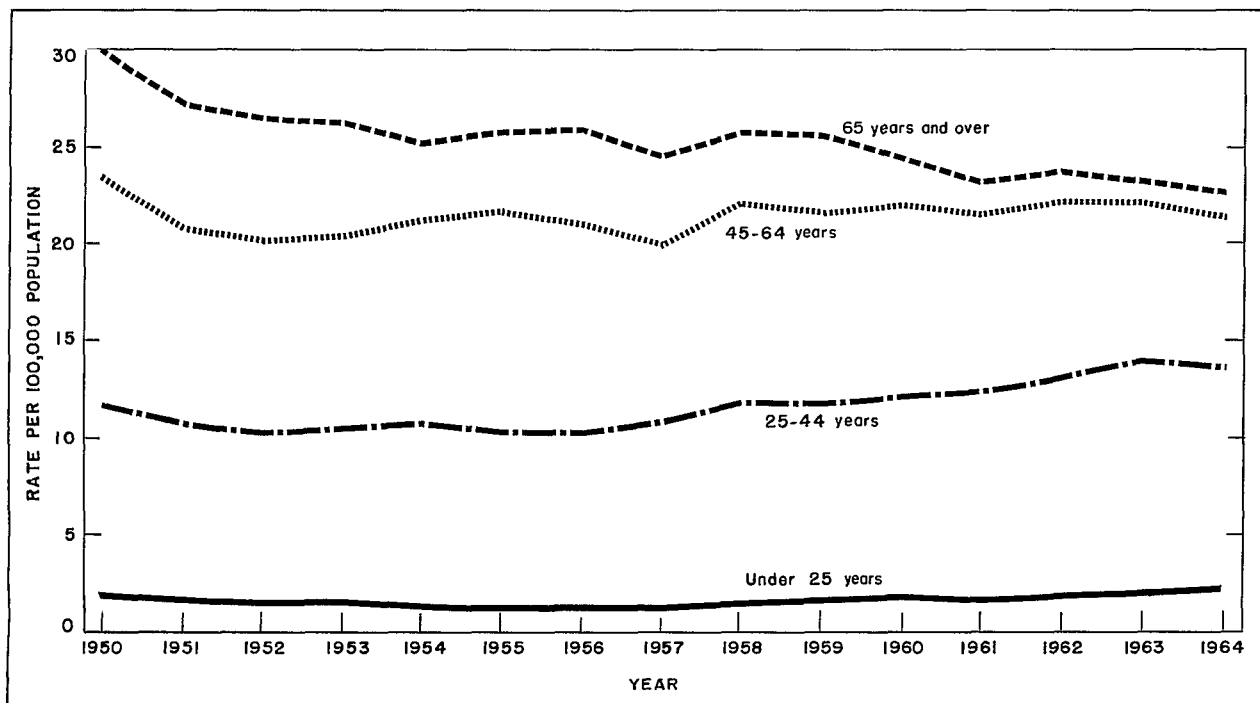


Figure 8. Suicide rates by age: 1950-64.

among Armed Forces overseas and among U.S. citizens living abroad are excluded. Data presented for States, geographic divisions, standard metropolitan statistical areas, and metropolitan-nonmetropolitan counties are by place of residence. For nonresident aliens the place of residence is considered the same as the place of occurrence.

#### Cause of Death

Since 1900 the causes of death have been classified according to seven different revisions of the International List of Causes of Death. Each revision has produced some breaks in the comparability of cause-of-death statistics. However, suicide is among the causes for which the classifications are essentially comparable for all revisions.

The Sixth Revision of the International Lists of Diseases and Causes of Death, adopted by the World Health Organization in July 1948, was used for mortality data in the United States from 1949 through 1957. The Seventh Revision, adopted in 1955, has been used since 1958.

In order to estimate the effect of the Seventh Revision on the comparability of mortality trends for various causes, a 10-percent sample of deaths in 1958 was classified using both the Sixth and the Seventh Revisions. Comparability ratios were computed by comparing the number of deaths assigned to a particular cause by the Sixth Revision with the number of deaths assigned by the Seventh Revision. In the case of suicide for 1958, there were 1,729 suicides assigned according to the Sixth Revision and 1,786 suicides assigned by the Seventh Revision, giving a comparability ratio of 1.03. (See *Vital Statistics—Special Reports*, Vol. 51, No. 4.)

The comparability ratios by age, sex, and color for the most part were very close to the overall ratio of 1.03. The ratio was 1.03 for the white and 1.06 for the nonwhite population. The comparability ratios by age groups for all suicides ranged from 1.02 to 1.05. Ratios for means of injury varied from 1.02 for suicides committed with firearms and explosives to 1.55 for those caused by jumping from high places.

These ratios reflect also a change in the interpretation of "self-inflicted" injuries which

was made at the time the Seventh Revision was put into use. Beginning with data for 1958, deaths from "self-inflicted" injuries not designated as either a suicide or an accident were classified as suicides. Formerly they had been classified as accidents.

In both the Sixth and the Seventh Revisions of the International Lists the suicide category numbers were E963, and E970-E979. Except for the average annual rates for 1959-61, rates presented in this report were computed from deaths assigned to these categories. The 1959-61 average annual rates were taken from tabulations which excluded category E963. However, during all 3 years, only 15 deaths were assigned to this number.

### Ranking Causes of Death

The ranking of suicide among the leading causes of death is based on the ranking of causes which are included in the table listing 60 selected causes of death, published annually in *Vital Statistics of the United States*.

### Race

The category "white" includes in addition to persons reported as white, those reported as Mexican, Puerto Rican, or Cuban and, until 1964, those with race "not stated." In 1964, deaths with race "not stated" were assigned to white or Negro on the assumption that the distribution of "not stated" events by race is the same as that of deaths with race stated. No allocation of "not stated" was made to the other nonwhite groups. The category "nonwhite" consists of persons reported as Negro, American Indian, Chinese, and Japanese; other nonwhite groups; and persons of mixed white-nonwhite races.

Deaths by race were not available for New Jersey in 1962 and 1963. The item was omitted on the death certificate at the beginning of 1962 and was not reinstated until the end of 1962. The 1963 statistics were incomplete because of the continued use of the certificates omitting the race item. Consequently, rates for color for the United States exclude New Jersey in both 1962 and 1963.

### Marital Status

Marital status is tabulated as either single (never married), married, widowed, divorced, or not stated. For the 3 years of 1959-61, marital status was not stated for 1.2 percent of the persons committing suicide. Of the four color and sex groups, nonwhite males had the highest percentage of "not stated" suicides (3.2 percent).

### Geographic Classification

*Standard metropolitan statistical areas.*—The standard metropolitan statistical areas (SMSA's) used in this report are basically those established by the Bureau of the Budget and used by the Bureau of the Census. The only differences occur in the New England States. In New England, the metropolitan State economic area (MSEA), established by the Bureau of the Census and composed of county units, is used. The only SMSA's for which data are shown in this report are those with a population of 500,000 or more in 1960.

*Metropolitan and nonmetropolitan counties.*—Counties which are included in SMSA's or, in New England, MSEA's, are called metropolitan counties; all other counties are classified as nonmetropolitan.

### Rates

All rates are shown per 100,000 population. In many cases, the rates are shown beyond the last significant figure, merely for convenience in computation and publication.

Rates based on fewer than 20 deaths are shown with an asterisk to indicate that these figures are subject to large fluctuations. The number "20" is arbitrary and is not set forth as a critical point distinguishing statistically reliable rates from unreliable rates.

The age-adjusted rates presented in this report were computed by the direct method, that is, by applying the age-specific death rates for suicide to the standard population distributed by age. The total population as enumerated in 1940 was selected as the standard. The rates for the total population and for each color-sex group

were adjusted separately, using the same standard population. It is important not to compare age-adjusted rates with the crude rates shown in other tables.

### **Population Bases**

Rates are computed on the bases of population statistics made available by the U.S. Bureau of the Census. They include populations present in the specified areas, including the Armed Forces stationed in the area, but exclude the Armed Forces overseas and persons living abroad.

Populations for 1950 and 1960 are enumerated as of April 1. For all other years the population estimated as of July 1 was used. The rates for the years 1951 through 1959 are based on the final intercensal population estimates (P-25, No. 310) and, as a result, may differ slightly from rates published earlier which were based on provisional population estimates. Population estimates by color for 1962 and 1963 exclude New Jersey.

The 3-year average annual rates were computed using the number of deaths occurring for the 3 years and the decennial enumerated populations, multiplied by 3.

Some of the 1960 population data published by the Bureau of the Census was obtained on a complete-count basis in the 100-percent enumeration and some on a 25-percent sample enumeration. There are differences between these two sets of published figures, with the greatest differences in the older age groups. For the total United States, the largest percent differences for sex-color- and 5-year-age groups are for white and nonwhite males 85 years of age and over.

As a general rule, the population series based on 100-percent enumeration are used in computing vital statistics rates. Exceptions are made where populations are required for characteristics which were not covered in the complete count. In this report, death rates for suicide by marital status are exceptions; they are based on populations obtained from the 25-percent sample. As a result, the rates appearing in table 6 for all marital status groups combined are slightly different from those in table 5. The only rates which can be compared directly from these two tables are the total U.S. rates for the group 85 years and over by color and sex. For each of the nine categories, the rate shown in table 6 is higher (ranging from 6.1 to 8.6 percent) than the corresponding rate shown in table 5.



## BIBLIOGRAPHY

Concetti, G. M.: Suicide and public health—an attempt at reconceptualization. *Am.J.Pub.Health* 49(7):881-887, July 1959.

Dublin, L. I.: *Suicide, A Sociological and Statistical Study*. New York. The Ronald Press Co., 1963.

Farberow, N. L., and Shneidman, E. S., eds.: *The Cry for Help*. New York. McGraw-Hill Book Co., Inc., 1961.

Farberow, N. L., and Shneidman, E. S., eds.: *Clues to Suicide*. New York. McGraw-Hill Book Co., Inc., 1957.

Hirsh, J.: Part 1, Demography of suicide. *Ment. Hyg.* 43 (4):516-525, Oct. 1959.

Hirsh, J.: Part 2, Methods and fashions of suicide. *Ment. Hyg.* 44(1):3-11, Jan. 1960.

Hirsh, J.: Part 3, Dynamics of suicide. *Ment. Hyg.* 44(2): 274-280, Apr. 1960.

Hirsh, J.: Part 4, Predictability and prevention. *Ment. Hyg.* 44(3):382-389, July 1960.

Hirsh, J.: Part 5, The trouble shooting clinic. *Ment. Hyg.* 44(4):496-502, Oct. 1960.

Jacobziner, H.: Attempted suicides in adolescence. *J.A.M.A.* 191(1): 7-11, Jan. 4, 1965.

MacMahon, B., Johnson, S., and Pugh, T. F.: Relation of suicide rates to social conditions. *Pub.Health Rep.* 78(4):285-293, Apr. 1963.

Meerlo, J. A. M.: *Suicide and Mass Suicide*. New York. Grune and Stratton, Inc., 1962.

National Center for Health Statistics: *Vital Statistics of the United States*, annual publication. Public Health Service. Washington. U.S. Government Printing Office.

National Center for Health Statistics: Comparability of mortality statistics for the Sixth and Seventh Revisions, United States, 1958, by M. M. Faust and A. B. Dolman, *Vital Statistics—Special Reports*, Vol. 51, No. 4. Public Health Service. Washington, D.C., Mar. 1965.

National Center for Health Statistics: Mortality trends in the United States, 1954-1963. *Vital and Health Statistics*. PHS Pub. No. 1000-Series 20-No. 2. Public Health Service. Washington. U.S. Government Printing Office, June 1966.

U.S. Bureau of the Census: Estimates of the population of the United States and components of change by age, color, and sex, 1950 to 1960. *Current Population Reports*. Series P-25, No. 310. Department of Commerce. Washington. U.S. Government Printing Office, June 30, 1965.



## DETAILED TABLES

|          |   | Page |
|----------|---|------|
| Table 1. | Age-adjusted suicide rates, by color and sex: United States, 1950-64-----   | 14   |
|          | 2. Suicide rates, by age, color, and sex: United States, 1950-64-----   | 15   |
|          | 3. Suicide rates for metropolitan and nonmetropolitan counties, by color and sex:<br>United States and geographic division, 1959-61 (3-year average)----- | 18   |
|          | 4. Age-adjusted suicide rates, by color and sex: United States, geographic division,<br>and State, 1949-51 and 1959-61 (3-year averages)-----             | 19   |
|          | 5. Suicide rates, by age, color, and sex: United States, geographic division, and<br>State, 1959-61 (3-year average)-----                                 | 23   |
|          | 6. Suicide rates, by color, sex, marital status, and age: United States, 1959-61<br>(3-year average)-----   | 32   |
|          | 7. Suicide rates and rank order for specified standard metropolitan statistical areas:<br>United States, 1960-----  | 34   |

Table 1. Age-adjusted suicide rates, by color and sex: United States, 1950-64

| Year      | Total                       |      |        | White      |      |        | Nonwhite   |      |        |
|-----------|-----------------------------|------|--------|------------|------|--------|------------|------|--------|
|           | Both sexes                  | Male | Female | Both sexes | Male | Female | Both sexes | Male | Female |
|           | Rate for 100,000 population |      |        |            |      |        |            |      |        |
| 1964----- | 11.0                        | 16.6 | 5.8    | 11.6       | 17.4 | 6.2    | 5.7        | 9.1  | *2.6   |
| 1963----- | 11.3                        | 17.0 | 6.0    | 11.9       | 17.9 | 6.4    | 6.1        | 9.9  | *2.7   |
| 1962----- | 11.0                        | 16.8 | 5.6    | 11.7       | 17.9 | 6.0    | 5.7        | 9.0  | *2.7   |
| 1961----- | 10.5                        | 16.4 | 5.0    | 10.9       | 17.1 | 5.3    | 5.7        | 9.5  | *2.2   |
| 1960----- | 10.6                        | 16.6 | 5.0    | 11.1       | 17.5 | 5.3    | 5.4        | 8.7  | *2.3   |
| 1959----- | 10.5                        | 16.6 | 4.7    | 11.0       | 17.4 | 4.9    | 5.5        | 9.1  | *2.3   |
| 1958----- | 10.5                        | 16.8 | 4.7    | 11.1       | 17.6 | 5.0    | 5.1        | 8.4  | *2.1   |
| 1957----- | 9.6                         | 15.3 | 4.2    | 10.0       | 16.0 | 4.5    | 4.7        | 8.1  | *1.6   |
| 1956----- | 9.7                         | 15.5 | 4.4    | 10.3       | 16.3 | 4.6    | 4.4        | 7.1  | *1.8   |
| 1955----- | 9.9                         | 15.7 | 4.5    | 10.4       | 16.5 | 4.8    | 4.3        | 7.1  | *1.7   |
| 1954----- | 9.9                         | 16.0 | 4.1    | 10.4       | 16.8 | 4.3    | 4.6        | 7.8  | *1.7   |
| 1953----- | 9.8                         | 15.7 | 4.2    | 10.3       | 16.5 | 4.5    | 4.3        | 7.3  | *1.4   |
| 1952----- | 9.7                         | 15.3 | 4.3    | 10.2       | 16.1 | 4.6    | 4.1        | 6.9  | *1.4   |
| 1951----- | 10.0                        | 15.8 | 4.6    | 10.5       | 16.5 | 4.8    | 4.5        | 7.3  | *1.9   |
| 1950----- | 11.0                        | 17.3 | 4.9    | 11.6       | 18.1 | 5.3    | 4.8        | 7.8  | *1.8   |

Table 2. Suicide rates, by age, color, and sex: United States, 1950-64

| Color, sex, and year     | All ages | 5-14 years                  | 15-24 years | 25-34 years | 35-44 years | 45-54 years | 55-64 years | 65-74 years | 75-84 years | 85 years and over |
|--------------------------|----------|-----------------------------|-------------|-------------|-------------|-------------|-------------|-------------|-------------|-------------------|
| <u>Total, both sexes</u> |          | Rate per 100,000 population |             |             |             |             |             |             |             |                   |
| 1964-----                | 10.8     | 0.2                         | 6.0         | 11.9        | 15.6        | 20.5        | 22.7        | 22.1        | 23.9        | 25.3              |
| 1963-----                | 11.0     | 0.3                         | 6.0         | 11.8        | 16.0        | 21.1        | 23.6        | 22.4        | 25.4        | 24.6              |
| 1962-----                | 10.9     | 0.3                         | 5.7         | 11.3        | 15.0        | 21.0        | 23.7        | 22.2        | 27.2        | 26.7              |
| 1961-----                | 10.4     | 0.2                         | 5.1         | 10.3        | 14.4        | 20.3        | 23.1        | 22.0        | 26.0        | 24.9              |
| 1960-----                | 10.6     | 0.3                         | 5.2         | 10.0        | 14.2        | 20.7        | 23.7        | 23.0        | 27.9        | 26.0              |
| 1959-----                | 10.6     | 0.2                         | 4.9         | 9.9         | 13.6        | 19.8        | 24.3        | 24.8        | 27.8        | 25.7              |
| 1958-----                | 10.7     | 0.2                         | 4.8         | 9.8         | 13.7        | 20.7        | 24.1        | 25.1        | 27.7        | 25.8              |
| 1957-----                | 9.8      | 0.2                         | 4.0         | 8.7         | 12.7        | 18.2        | 22.4        | 23.6        | 26.5        | 26.4              |
| 1956-----                | 10.0     | 0.2                         | 4.0         | 8.5         | 12.1        | 18.5        | 24.2        | 25.2        | 28.0        | 23.5              |
| 1955-----                | 10.2     | 0.1                         | 4.1         | 8.4         | 12.3        | 19.6        | 24.8        | 25.0        | 27.5        | 27.9              |
| 1954-----                | 10.1     | 0.1                         | 4.2         | 8.7         | 12.5        | 19.3        | 23.9        | 25.1        | 25.6        | 25.1              |
| 1953-----                | 10.1     | 0.2                         | 4.4         | 8.5         | 12.6        | 18.7        | 22.4        | 25.4        | 28.0        | 27.9              |
| 1952-----                | 10.0     | 0.2                         | 4.2         | 8.5         | 12.4        | 18.3        | 22.5        | 25.6        | 27.9        | 31.2              |
| 1951-----                | 10.4     | 0.2                         | 4.4         | 8.6         | 13.3        | 18.8        | 23.2        | 27.1        | 27.7        | 30.5              |
| 1950-----                | 11.4     | 0.2                         | 4.5         | 9.1         | 14.3        | 20.9        | 26.8        | 29.6        | 31.1        | 28.8              |
| <u>Total, male</u>       |          |                             |             |             |             |             |             |             |             |                   |
| 1964-----                | 16.1     | 0.4                         | 9.2         | 16.9        | 21.3        | 29.9        | 36.1        | 37.0        | 47.5        | 59.3              |
| 1963-----                | 16.5     | 0.4                         | 9.0         | 16.6        | 22.4        | 30.8        | 37.3        | 38.3        | 49.3        | 55.8              |
| 1962-----                | 16.5     | 0.5                         | 8.5         | 15.9        | 21.5        | 30.9        | 37.0        | 38.8        | 53.5        | 57.4              |
| 1961-----                | 16.0     | 0.3                         | 7.9         | 14.9        | 21.2        | 30.9        | 37.4        | 37.7        | 50.4        | 56.4              |
| 1960-----                | 16.5     | 0.4                         | 8.2         | 14.7        | 21.0        | 31.6        | 38.1        | 39.6        | 52.5        | 57.4              |
| 1959-----                | 16.6     | 0.4                         | 7.7         | 14.4        | 20.5        | 31.0        | 39.4        | 42.6        | 54.2        | 59.4              |
| 1958-----                | 16.8     | 0.4                         | 7.4         | 14.2        | 21.1        | 32.1        | 39.6        | 43.3        | 54.9        | 54.9              |
| 1957-----                | 15.4     | 0.3                         | 6.4         | 12.7        | 19.1        | 28.6        | 35.9        | 41.4        | 52.5        | 58.8              |
| 1956-----                | 15.7     | 0.3                         | 6.3         | 12.7        | 18.2        | 28.3        | 39.1        | 43.6        | 54.8        | 51.1              |
| 1955-----                | 16.0     | 0.2                         | 6.3         | 12.4        | 18.8        | 29.7        | 40.3        | 42.8        | 51.7        | 57.9              |
| 1954-----                | 16.3     | 0.2                         | 6.7         | 13.4        | 18.9        | 31.0        | 39.2        | 43.7        | 49.9        | 50.7              |
| 1953-----                | 16.1     | 0.3                         | 6.6         | 12.7        | 19.5        | 29.3        | 36.4        | 44.7        | 53.5        | 59.9              |
| 1952-----                | 15.8     | 0.2                         | 6.6         | 12.4        | 18.5        | 27.9        | 36.5        | 44.4        | 53.6        | 66.3              |
| 1951-----                | 16.2     | 0.3                         | 6.6         | 12.6        | 19.5        | 28.6        | 37.6        | 47.2        | 51.2        | 66.0              |
| 1950-----                | 17.8     | 0.3                         | 6.5         | 13.4        | 21.3        | 32.0        | 43.6        | 50.5        | 58.3        | 58.3              |
| <u>Total, female</u>     |          |                             |             |             |             |             |             |             |             |                   |
| 1964-----                | 5.6      | *0.1                        | 2.8         | 7.0         | 10.1        | 11.6        | 10.2        | 9.8         | 6.4         | 4.1               |
| 1963-----                | 5.8      | *0.1                        | 3.1         | 7.2         | 9.9         | 11.9        | 10.9        | 9.1         | 7.4         | 5.0               |
| 1962-----                | 5.4      | *0.1                        | 2.9         | 6.8         | 8.8         | 11.5        | 10.4        | 8.2         | 7.2         | 7.3               |
| 1961-----                | 4.9      | *0.1                        | 2.3         | 5.8         | 7.8         | 10.0        | 9.7         | 8.5         | 7.2         | 4.9               |
| 1960-----                | 4.9      | *0.1                        | 2.2         | 5.5         | 7.7         | 10.2        | 10.2        | 8.4         | 8.9         | 6.0               |
| 1959-----                | 4.7      | *0.1                        | 2.1         | 5.4         | 7.0         | 8.8         | 10.1        | 9.3         | 7.2         | 3.7               |
| 1958-----                | 4.7      | *0.1                        | 2.3         | 5.6         | 6.7         | 9.7         | 9.4         | 9.0         | 6.4         | 6.4               |
| 1957-----                | 4.3      | *0.1                        | 1.8         | 4.8         | 6.6         | 8.0         | 9.6         | 7.8         | 5.9         | 4.3               |
| 1956-----                | 4.4      | *0.1                        | 1.9         | 4.5         | 6.3         | 9.0         | 9.9         | 8.9         | 6.5         | 4.3               |
| 1955-----                | 4.6      | *0.1                        | 2.0         | 4.6         | 6.1         | 9.6         | 9.8         | 8.9         | 7.9         | 6.7               |
| 1954-----                | 4.1      | *0.0                        | 1.8         | 4.3         | 6.3         | 7.7         | 9.0         | 8.3         | 5.9         | 6.8               |
| 1953-----                | 4.3      | *0.1                        | 2.3         | 4.5         | 6.0         | 8.3         | 8.7         | 7.8         | 7.1         | 5.0               |
| 1952-----                | 4.4      | *0.1                        | 2.0         | 4.7         | 6.4         | 8.7         | 8.7         | 8.4         | 6.7         | 6.0               |
| 1951-----                | 4.7      | *0.1                        | 2.3         | 4.8         | 7.2         | 9.1         | 8.8         | 8.6         | 7.9         | *5.3              |
| 1950-----                | 5.1      | *0.1                        | 2.6         | 4.9         | 7.5         | 9.9         | 9.9         | 10.1        | 8.1         | 8.2               |

See note at end of table.

Table 2. Suicide rates, by age, color, and sex: United States, 1950-64—Con.

| Color, sex, and year        | All ages | 5-14 years | 15-24 years | 25-34 years | 35-44 years | 45-54 years | 55-64 years | 65-74 years | 75-84 years | 85 years and over |
|-----------------------------|----------|------------|-------------|-------------|-------------|-------------|-------------|-------------|-------------|-------------------|
| <u>White, both sexes</u>    |          |            |             |             |             |             |             |             |             |                   |
| Rate per 100,000 population |          |            |             |             |             |             |             |             |             |                   |
| 1964-----                   | 11.6     | 0.3        | 6.1         | 12.1        | 16.5        | 22.0        | 24.1        | 23.3        | 25.3        | 27.5              |
| 1963-----                   | 11.9     | 0.3        | 6.2         | 12.2        | 17.1        | 22.8        | 25.4        | 23.4        | 26.8        | 25.8              |
| 1962-----                   | 11.8     | 0.3        | 5.8         | 11.8        | 16.1        | 22.7        | 25.3        | 23.6        | 28.8        | 28.3              |
| 1961-----                   | 11.1     | 0.2        | 5.1         | 10.4        | 15.2        | 21.6        | 24.5        | 23.3        | 27.3        | 26.3              |
| 1960-----                   | 11.4     | 0.3        | 5.4         | 10.3        | 14.9        | 22.1        | 25.0        | 24.2        | 29.4        | 27.4              |
| 1959-----                   | 11.3     | 0.3        | 5.0         | 10.0        | 14.4        | 21.0        | 25.7        | 26.2        | 29.0        | 27.3              |
| 1958-----                   | 11.5     | 0.2        | 5.0         | 10.0        | 14.5        | 22.1        | 25.5        | 26.5        | 29.2        | 27.3              |
| 1957-----                   | 10.5     | 0.2        | 4.1         | 8.8         | 13.4        | 19.4        | 23.7        | 24.8        | 27.8        | 27.7              |
| 1956-----                   | 10.8     | 0.2        | 4.1         | 8.8         | 12.8        | 19.8        | 25.6        | 26.8        | 29.5        | 25.0              |
| 1955-----                   | 11.0     | 0.1        | 4.1         | 8.7         | 13.1        | 20.9        | 26.3        | 26.5        | 28.9        | 29.6              |
| 1954-----                   | 10.9     | 0.1        | 4.3         | 8.9         | 13.3        | 20.5        | 25.3        | 26.5        | 26.9        | 26.8              |
| 1953-----                   | 10.8     | 0.2        | 4.6         | 8.8         | 13.4        | 19.9        | 23.7        | 27.0        | 29.2        | 29.7              |
| 1952-----                   | 10.8     | 0.1        | 4.4         | 8.7         | 13.2        | 19.6        | 23.6        | 27.3        | 29.4        | 32.9              |
| 1951-----                   | 11.1     | 0.2        | 4.5         | 8.8         | 14.0        | 20.0        | 24.4        | 28.9        | 29.0        | 32.9              |
| 1950-----                   | 12.2     | 0.2        | 4.7         | 9.4         | 15.2        | 22.3        | 28.3        | 31.1        | 32.9        | 30.6              |
| <u>White, male</u>          |          |            |             |             |             |             |             |             |             |                   |
| 1964-----                   | 17.2     | 0.5        | 9.3         | 17.0        | 22.2        | 31.8        | 38.5        | 39.1        | 50.5        | 65.1              |
| 1963-----                   | 17.8     | 0.5        | 9.2         | 16.9        | 23.6        | 33.0        | 40.2        | 40.3        | 52.5        | 59.4              |
| 1962-----                   | 17.8     | 0.5        | 8.7         | 16.5        | 22.8        | 33.4        | 40.5        | 41.3        | 57.0        | 61.4              |
| 1961-----                   | 17.1     | 0.4        | 7.9         | 14.7        | 22.3        | 32.8        | 39.7        | 39.9        | 53.2        | 60.3              |
| 1960-----                   | 17.6     | 0.5        | 8.6         | 14.9        | 21.9        | 33.7        | 40.2        | 42.0        | 55.7        | 61.3              |
| 1959-----                   | 17.7     | 0.5        | 7.9         | 14.4        | 21.5        | 32.8        | 41.8        | 45.0        | 56.6        | 63.8              |
| 1958-----                   | 18.0     | 0.4        | 7.6         | 14.3        | 22.1        | 34.0        | 41.9        | 45.8        | 58.3        | 58.5              |
| 1957-----                   | 16.5     | 0.4        | 6.5         | 12.7        | 20.1        | 30.3        | 38.1        | 43.5        | 55.3        | 62.7              |
| 1956-----                   | 16.9     | 0.3        | 6.4         | 12.9        | 19.1        | 30.2        | 41.5        | 46.4        | 58.1        | 54.3              |
| 1955-----                   | 17.2     | 0.2        | 6.2         | 12.7        | 19.8        | 31.7        | 42.8        | 45.6        | 54.7        | 61.2              |
| 1954-----                   | 17.5     | 0.2        | 6.9         | 13.5        | 19.9        | 33.0        | 41.6        | 46.2        | 52.6        | 54.3              |
| 1953-----                   | 17.2     | 0.4        | 7.0         | 13.0        | 20.5        | 31.0        | 38.4        | 47.5        | 55.9        | 63.4              |
| 1952-----                   | 16.9     | 0.2        | 6.9         | 12.6        | 19.6        | 29.8        | 38.4        | 47.2        | 56.7        | 70.0              |
| 1951-----                   | 17.3     | 0.3        | 6.8         | 12.8        | 20.5        | 30.3        | 39.7        | 50.3        | 53.8        | 70.9              |
| 1950-----                   | 19.0     | 0.3        | 6.6         | 13.8        | 22.4        | 34.1        | 45.9        | 53.2        | 61.9        | 61.9              |
| <u>White, female</u>        |          |            |             |             |             |             |             |             |             |                   |
| 1964-----                   | 6.1      | *0.1       | 2.9         | 7.3         | 10.9        | 12.5        | 10.9        | 10.4        | 6.7         | 4.4               |
| 1963-----                   | 6.3      | *0.1       | 3.1         | 7.5         | 10.9        | 12.9        | 11.6        | 9.5         | 7.7         | 5.1               |
| 1962-----                   | 5.9      | *0.1       | 2.9         | 7.3         | 9.5         | 12.4        | 11.1        | 8.8         | 7.6         | 7.6               |
| 1961-----                   | 5.3      | *0.1       | 2.3         | 6.1         | 8.3         | 10.8        | 10.4        | 9.1         | 7.6         | 4.9               |
| 1960-----                   | 5.3      | *0.1       | 2.3         | 5.8         | 8.1         | 10.9        | 10.9        | 8.8         | 9.2         | 6.1               |
| 1959-----                   | 5.0      | *0.0       | 2.1         | 5.7         | 7.5         | 9.5         | 10.6        | 9.8         | 7.6         | *3.8              |
| 1958-----                   | 5.1      | *0.1       | 2.4         | 5.9         | 7.1         | 10.4        | 10.0        | 9.6         | 6.6         | 6.7               |
| 1957-----                   | 4.6      | *0.1       | 1.8         | 5.0         | 7.1         | 8.8         | 10.1        | 8.3         | 6.2         | *3.9              |
| 1956-----                   | 4.8      | *0.1       | 2.0         | 4.7         | 6.7         | 9.6         | 10.5        | 9.4         | 6.8         | 4.6               |
| 1955-----                   | 4.9      | *0.1       | 2.0         | 4.9         | 6.6         | 10.3        | 10.4        | 9.4         | 8.3         | 7.2               |
| 1954-----                   | 4.5      | *0.1       | 1.8         | 4.4         | 6.8         | 8.2         | 9.5         | 8.7         | 6.3         | 7.1               |
| 1953-----                   | 4.6      | *0.1       | 2.3         | 4.8         | 6.5         | 9.0         | 9.3         | 8.3         | 7.5         | 5.4               |
| 1952-----                   | 4.7      | *0.1       | 2.1         | 5.0         | 6.9         | 9.4         | 9.2         | 9.0         | 7.0         | 6.3               |
| 1951-----                   | 5.0      | *0.1       | 2.3         | 5.0         | 7.7         | 9.8         | 9.2         | 9.1         | 8.3         | *8.2              |
| 1950-----                   | 5.5      | *0.1       | 2.7         | 5.2         | 8.2         | 10.5        | 10.7        | 10.6        | 8.4         | 8.9               |

See note at end of table.

Table 2. Suicide rates, by age, color, and sex: United States, 1950-64--Con.

| Color, sex, and year        | All ages | 5-14 years                  | 15-24 years | 25-34 years | 35-44 years | 45-54 years | 55-64 years | 65-74 years | 75-84 years | 85 years and over |
|-----------------------------|----------|-----------------------------|-------------|-------------|-------------|-------------|-------------|-------------|-------------|-------------------|
| <u>Nonwhite, both sexes</u> |          | Rate per 100,000 population |             |             |             |             |             |             |             |                   |
| 1964-----                   | 4.6      | *0.1                        | 4.9         | 10.0        | 8.1         | 7.4         | 8.0         | 7.9         | 7.3         | *1.2              |
| 1963-----                   | 5.0      | *0.2                        | 5.0         | 10.1        | 9.1         | 7.9         | 7.4         | 11.1        | 9.6         | *7.7              |
| 1962-----                   | 4.7      | *0.1                        | 5.2         | 8.4         | 8.1         | 7.7         | 9.1         | 8.9         | 8.1         | *6.8              |
| 1961-----                   | 4.7      | *0.1                        | 4.7         | 9.4         | 7.5         | 8.2         | 9.0         | 7.3         | 8.6         | *8.3              |
| 1960-----                   | 4.5      | *0.1                        | 3.4         | 7.9         | 8.3         | 7.9         | 10.0        | 8.0         | 7.6         | *9.8              |
| 1959-----                   | 4.6      | *0.1                        | 4.3         | 8.7         | 6.7         | 8.2         | 9.4         | 8.6         | 11.8        | *5.9              |
| 1958-----                   | 4.4      | *0.1                        | 3.5         | 7.8         | 7.3         | 7.8         | 9.0         | 8.0         | 7.2         | *7.6              |
| 1957-----                   | 4.0      | *0.0                        | 3.4         | 7.4         | 6.3         | 6.4         | 7.9         | 9.3         | 8.6         | *9.4              |
| 1956-----                   | 3.8      | *0.1                        | 3.4         | 6.4         | 6.6         | 6.4         | 7.7         | 6.2         | *6.3        | *4.9              |
| 1955-----                   | 3.8      | *0.1                        | 4.0         | 6.0         | 5.5         | 6.6         | 7.6         | 6.5         | *7.0        | *6.9              |
| 1954-----                   | 4.1      | *0.0                        | 3.4         | 7.4         | 6.1         | 7.1         | 7.5         | 7.9         | *7.0        | *3.6              |
| 1953-----                   | 3.8      | *0.2                        | 3.0         | 5.8         | 5.8         | 7.2         | 7.0         | 7.0         | 11.1        | *5.8              |
| 1952-----                   | 3.7      | *0.2                        | 2.7         | 6.5         | 5.5         | 5.7         | 8.3         | 5.5         | *5.8        | *10.2             |
| 1951-----                   | 4.1      | *0.2                        | 3.7         | 6.4         | 6.6         | 6.8         | 7.5         | 6.1         | *8.3        | *2.1              |
| 1950-----                   | 4.3      | *0.1                        | 3.4         | 6.3         | 6.6         | 7.9         | 9.1         | 8.7         | *5.4        | *6.7              |
| <u>Nonwhite, male</u>       |          |                             |             |             |             |             |             |             |             |                   |
| 1964-----                   | 7.2      | *0.1                        | 8.0         | 16.2        | 12.8        | 11.8        | 12.3        | 13.4        | 12.5        | *2.7              |
| 1963-----                   | 7.9      | *0.3                        | 7.5         | 15.9        | 14.9        | 13.6        | 12.7        | 18.2        | 19.0        | *12.1             |
| 1962-----                   | 7.2      | *0.1                        | 7.5         | 12.8        | 12.8        | 12.4        | 14.6        | 16.8        | 13.6        | *12.9             |
| 1961-----                   | 7.6      | *0.1                        | 7.6         | 16.3        | 11.5        | 14.0        | 15.0        | 13.2        | 16.6        | *12.9             |
| 1960-----                   | 7.2      | *0.1                        | 5.3         | 12.9        | 13.5        | 12.8        | 16.9        | 12.6        | *11.3       | *15.9             |
| 1959-----                   | 7.5      | *0.2                        | 6.6         | 14.4        | 11.0        | 13.9        | 14.8        | 14.9        | 22.9        | *10.3             |
| 1958-----                   | 7.1      | *0.2                        | 5.4         | 12.6        | 12.3        | 12.8        | 15.3        | 14.2        | *11.5       | *14.8             |
| 1957-----                   | 6.8      | *0.0                        | 5.6         | 13.0        | 10.6        | 11.8        | 11.9        | 17.4        | 15.6        | *11.5             |
| 1956-----                   | 6.1      | *0.1                        | 5.8         | 10.8        | 10.5        | 9.8         | 12.2        | 10.0        | *11.5       | *12.0             |
| 1955-----                   | 6.1      | *0.1                        | 6.5         | 9.6         | 9.6         | 10.5        | 12.7        | 10.8        | *12.8       | *16.7             |
| 1954-----                   | 6.8      | *0.1                        | 5.5         | 12.8        | 10.6        | 11.4        | 12.2        | 13.6        | *13.4       | *4.5              |
| 1953-----                   | 6.4      | *0.1                        | 4.2         | 10.1        | 10.3        | 12.6        | 12.0        | 12.2        | 21.9        | *14.3             |
| 1952-----                   | 6.1      | *0.3                        | 4.5         | 10.7        | 8.9         | 9.9         | 14.3        | 11.0        | *10.9       | *20.0             |
| 1951-----                   | 6.6      | *0.3                        | 5.2         | 10.7        | 10.8        | 11.4        | 12.0        | 10.1        | *15.1       | *5.3              |
| 1950-----                   | 7.0      | *0.1                        | 5.3         | 10.1        | 11.3        | 11.7        | 16.8        | 15.0        | *7.9        | *16.1             |
| <u>Nonwhite, female</u>     |          |                             |             |             |             |             |             |             |             |                   |
| 1964-----                   | 2.2      | *0.0                        | 2.0         | 4.7         | 4.1         | 3.4         | 4.0         | *3.2        | *2.8        | -                 |
| 1963-----                   | 2.2      | *0.2                        | 2.6         | 5.0         | 4.0         | 2.7         | 2.3         | *5.0        | *1.5        | *4.5              |
| 1962-----                   | 2.2      | *0.0                        | 3.0         | 4.6         | 3.9         | 3.3         | 3.9         | *2.0        | *3.2        | *2.4              |
| 1961-----                   | 1.9      | *0.2                        | 2.0         | 3.5         | 3.9         | 2.7         | 3.2         | *1.9        | *1.6        | *4.9              |
| 1960-----                   | 2.0      | *0.0                        | 1.5         | 3.5         | 3.7         | 3.2         | 3.4         | *3.8        | *4.2        | *5.0              |
| 1959-----                   | 1.9      | *0.1                        | 2.2         | 3.7         | 2.7         | 2.9         | 4.3         | *3.0        | *1.9        | *2.6              |
| 1958-----                   | 1.8      | *0.0                        | 1.7         | 3.6         | 2.8         | 3.1         | *2.9        | *2.4        | *3.3        | *2.6              |
| 1957-----                   | 1.4      | -                           | *1.4        | 2.5         | 2.3         | *1.3        | 4.0         | *1.9        | *2.1        | *8.1              |
| 1956-----                   | 1.6      | *0.1                        | *1.2        | 2.6         | 3.0         | 3.0         | 3.3         | *2.7        | *1.4        | -                 |
| 1955-----                   | 1.5      | -                           | 1.8         | 2.8         | 1.7         | 2.8         | *2.6        | *2.5        | *1.5        | -                 |
| 1954-----                   | 1.5      | -                           | 1.5         | 2.8         | 2.0         | 2.8         | *2.9        | *2.6        | *0.8        | *3.1              |
| 1953-----                   | 1.3      | *0.2                        | 2.0         | 2.1         | *1.6        | *1.8        | *1.9        | *2.2        | *0.8        | -                 |
| 1952-----                   | 1.3      | *0.1                        | *1.3        | 2.7         | 2.5         | *1.6        | *2.2        | *0.3        | *0.9        | *3.4              |
| 1951-----                   | 1.7      | -                           | 2.4         | 2.6         | 2.7         | *2.3        | *2.9        | *2.3        | *1.8        | -                 |
| 1950-----                   | 1.7      | *0.1                        | 1.7         | 2.8         | 2.2         | 4.0         | *1.2        | *2.5        | *2.9        | -                 |

NOTE: Deaths of children under 8 years of age are not tabulated as due to suicide, regardless of the information entered on the death certificate.

Table 3. Suicide rates for metropolitan and nonmetropolitan counties, by color and sex: United States and geographic division, 1959-61 (3-year average)

| Area                      | Total                       |      |        | White      |      |        | Nonwhite   |       |        |
|---------------------------|-----------------------------|------|--------|------------|------|--------|------------|-------|--------|
|                           | Both sexes                  | Male | Female | Both sexes | Male | Female | Both sexes | Male  | Female |
| United States             | Rate per 100,000 population |      |        |            |      |        |            |       |        |
| Total-----                | 10.5                        | 16.4 | 4.8    | 11.3       | 17.5 | 5.2    | 4.6        | 7.5   | 1.9    |
| Metropolitan-----         | 10.4                        | 15.7 | 5.3    | 11.1       | 16.7 | 5.7    | 4.9        | 7.8   | 2.2    |
| Nonmetropolitan-----      | 10.8                        | 17.6 | 4.0    | 11.6       | 18.9 | 4.4    | 4.1        | 7.0   | 1.4    |
| <u>New England</u>        |                             |      |        |            |      |        |            |       |        |
| Total-----                | 9.2                         | 14.6 | 4.1    | 9.3        | 14.7 | 4.2    | 5.6        | 8.8   | *2.5   |
| Metropolitan-----         | 8.4                         | 12.9 | 4.2    | 8.5        | 13.0 | 4.2    | 4.8        | 7.3   | *2.5   |
| Nonmetropolitan-----      | 12.0                        | 20.2 | 4.0    | 12.0       | 20.2 | 4.0    | *12.8      | *21.2 | *2.8   |
| <u>Middle Atlantic</u>    |                             |      |        |            |      |        |            |       |        |
| Total-----                | 9.4                         | 14.1 | 4.9    | 9.8        | 14.7 | 5.1    | 5.3        | 8.4   | 2.6    |
| Metropolitan-----         | 9.0                         | 13.3 | 5.0    | 9.4        | 13.8 | 5.2    | 5.3        | 8.4   | 2.6    |
| Nonmetropolitan-----      | 11.1                        | 17.9 | 4.5    | 11.3       | 18.2 | 4.6    | 5.4        | 9.0   | *1.3   |
| <u>East North Central</u> |                             |      |        |            |      |        |            |       |        |
| Total-----                | 10.2                        | 16.0 | 4.6    | 10.7       | 16.8 | 4.8    | 4.4        | 7.0   | 2.0    |
| Metropolitan-----         | 9.4                         | 14.5 | 4.6    | 10.1       | 15.5 | 4.9    | 4.3        | 6.9   | 1.9    |
| Nonmetropolitan-----      | 11.7                        | 18.9 | 4.6    | 11.8       | 19.1 | 4.7    | 5.4        | 8.3   | *2.4   |
| <u>West North Central</u> |                             |      |        |            |      |        |            |       |        |
| Total-----                | 10.9                        | 17.7 | 4.3    | 11.1       | 18.1 | 4.4    | 5.6        | 8.4   | 2.9    |
| Metropolitan-----         | 10.5                        | 17.1 | 4.3    | 11.0       | 18.0 | 4.4    | 4.8        | 6.6   | 3.2    |
| Nonmetropolitan-----      | 11.2                        | 18.1 | 4.2    | 11.2       | 18.2 | 4.3    | 7.7        | 13.1  | *2.0   |
| <u>South Atlantic</u>     |                             |      |        |            |      |        |            |       |        |
| Total-----                | 10.7                        | 17.1 | 4.5    | 12.8       | 20.3 | 5.5    | 3.8        | 6.4   | 1.4    |
| Metropolitan-----         | 11.0                        | 16.7 | 5.4    | 12.8       | 19.4 | 6.4    | 4.2        | 6.8   | 1.7    |
| Nonmetropolitan-----      | 10.5                        | 17.6 | 3.6    | 12.8       | 21.2 | 4.5    | 3.5        | 6.0   | 1.0    |
| <u>East South Central</u> |                             |      |        |            |      |        |            |       |        |
| Total-----                | 8.9                         | 14.9 | 3.1    | 10.5       | 17.5 | 3.7    | 3.2        | 5.5   | 1.1    |
| Metropolitan-----         | 8.8                         | 14.4 | 3.5    | 10.3       | 16.9 | 4.2    | 3.8        | 6.4   | 1.5    |
| Nonmetropolitan-----      | 8.9                         | 15.2 | 2.8    | 10.6       | 17.9 | 3.4    | 2.9        | 5.0   | 0.9    |
| <u>West South Central</u> |                             |      |        |            |      |        |            |       |        |
| Total-----                | 8.5                         | 13.7 | 3.4    | 9.5        | 15.2 | 3.8    | 3.6        | 6.1   | 1.2    |
| Metropolitan-----         | 8.8                         | 14.0 | 3.7    | 9.7        | 15.4 | 4.2    | 3.8        | 6.5   | 1.3    |
| Nonmetropolitan-----      | 8.1                         | 13.3 | 3.0    | 9.1        | 14.9 | 3.4    | 3.4        | 5.8   | 1.1    |
| <u>Mountain</u>           |                             |      |        |            |      |        |            |       |        |
| Total-----                | 13.3                        | 21.0 | 5.4    | 13.3       | 21.2 | 5.4    | 11.8       | 18.2  | 5.3    |
| Metropolitan-----         | 13.9                        | 21.9 | 6.0    | 14.2       | 22.4 | 6.1    | 6.6        | *9.2  | *4.0   |
| Nonmetropolitan-----      | 12.6                        | 20.2 | 4.8    | 12.5       | 20.0 | 4.7    | 15.3       | 24.1  | *6.3   |
| <u>Pacific</u>            |                             |      |        |            |      |        |            |       |        |
| Total-----                | 14.9                        | 21.2 | 8.5    | 15.5       | 22.1 | 8.9    | 8.4        | 12.3  | 4.2    |
| Metropolitan-----         | 15.1                        | 21.2 | 9.1    | 15.9       | 22.2 | 9.7    | 8.0        | 12.1  | 3.8    |
| Nonmetropolitan-----      | 13.8                        | 21.3 | 5.9    | 14.1       | 21.8 | 5.9    | 10.4       | 13.7  | 6.4    |

Table 4. Age-adjusted suicide rates, by color and sex: United States, geographic division, and State, 1949-51 and 1959-61 (3-year averages)

| Area                        | Total      |       |        | White      |       |        | Nonwhite   |        |        |
|-----------------------------|------------|-------|--------|------------|-------|--------|------------|--------|--------|
|                             | Both sexes | Male  | Female | Both sexes | Male  | Female | Both sexes | Male   | Female |
| Rate per 100,000 population |            |       |        |            |       |        |            |        |        |
| <b>UNITED STATES</b>        |            |       |        |            |       |        |            |        |        |
| 1949-51-----                | 10.7       | 16.8  | 4.8    | 11.3       | 17.6  | 5.1    | 4.7        | 7.7    | 1.8    |
| 1959-61-----                | 10.5       | 16.6  | 4.9    | 11.0       | 17.3  | 5.2    | 5.5        | 9.1    | 2.3    |
| <b>NEW ENGLAND</b>          |            |       |        |            |       |        |            |        |        |
| 1949-51-----                | 10.4       | 16.3  | 5.1    | 10.4       | 16.3  | 5.1    | *9.2       | *13.5  | *4.8   |
| 1959-61-----                | 8.8        | 14.2  | 3.9    | 8.8        | 14.3  | 3.9    | *6.4       | *10.1  | *2.9   |
| <b>Maine</b>                |            |       |        |            |       |        |            |        |        |
| 1949-51-----                | 15.1       | 23.6  | *7.1   | (1)        | (1)   | (1)    | (1)        | (1)    | (1)    |
| 1959-61-----                | 11.9       | 19.2  | *5.1   | 11.8       | 19.0  | *5.1   | *37.2      | *69.9  | -      |
| <b>New Hampshire</b>        |            |       |        |            |       |        |            |        |        |
| 1949-51-----                | *15.1      | *23.8 | *7.0   | (1)        | (1)   | (1)    | (1)        | (1)    | (1)    |
| 1959-61-----                | 11.1       | *18.4 | *4.4   | 11.1       | *18.4 | *4.5   | -          | -      | -      |
| <b>Vermont</b>              |            |       |        |            |       |        |            |        |        |
| 1949-51-----                | *11.3      | *19.3 | *3.7   | (1)        | (1)   | (1)    | (1)        | (1)    | (1)    |
| 1959-61-----                | *14.0      | *25.6 | *3.5   | *14.0      | *25.5 | *3.5   | *64.4      | *115.5 | -      |
| <b>Massachusetts</b>        |            |       |        |            |       |        |            |        |        |
| 1949-51-----                | 9.1        | 14.2  | 4.6    | 9.1        | 14.2  | 4.6    | *9.4       | *14.9  | *3.7   |
| 1959-61-----                | 7.9        | 12.8  | *3.5   | 7.9        | 12.9  | *3.5   | *5.2       | *6.9   | *3.6   |
| <b>Rhode Island</b>         |            |       |        |            |       |        |            |        |        |
| 1949-51-----                | *8.0       | *12.3 | *4.4   | (1)        | (1)   | (1)    | (1)        | (1)    | (1)    |
| 1959-61-----                | *6.1       | *9.6  | *3.0   | *5.9       | 9.4   | *2.9   | *12.4      | *16.9  | *7.9   |
| <b>Connecticut</b>          |            |       |        |            |       |        |            |        |        |
| 1949-51-----                | 11.0       | 16.9  | *5.7   | 11.1       | 17.1  | *5.6   | *7.7       | *8.6   | *6.8   |
| 1959-61-----                | 9.1        | 14.0  | *4.5   | 9.2        | 14.1  | *4.7   | *5.4       | *9.8   | *1.2   |
| <b>MIDDLE ATLANTIC</b>      |            |       |        |            |       |        |            |        |        |
| 1949-51-----                | 9.8        | 14.9  | 4.9    | 10.0       | 15.2  | 5.1    | 5.6        | 9.4    | *2.2   |
| 1959-61-----                | 8.6        | 13.3  | 4.5    | 8.8        | 13.5  | 4.6    | 5.8        | 9.3    | *2.7   |
| <b>New York</b>             |            |       |        |            |       |        |            |        |        |
| 1949-51-----                | 9.4        | 14.3  | 5.0    | 9.7        | 14.5  | 5.1    | *6.0       | *10.0  | *2.6   |
| 1959-61-----                | 8.6        | 12.9  | 4.8    | 8.7        | 13.0  | 4.8    | 6.6        | *10.7  | *3.2   |
| <b>New Jersey</b>           |            |       |        |            |       |        |            |        |        |
| 1949-51-----                | 10.7       | 15.8  | 6.1    | 10.9       | 16.1  | 6.2    | *5.7       | *8.5   | *3.1   |
| 1959-61-----                | 7.7        | 11.8  | 4.0    | 7.9        | 12.0  | 4.2    | *4.6       | *7.8   | *1.7   |
| <b>Pennsylvania</b>         |            |       |        |            |       |        |            |        |        |
| 1949-51-----                | 9.8        | 15.5  | 4.3    | 10.0       | 15.9  | 4.5    | *5.2       | *9.3   | *1.2   |
| 1959-61-----                | 9.2        | 14.6  | 4.3    | 9.5        | 15.1  | 4.4    | *5.2       | *8.2   | *2.4   |
| <b>EAST NORTH CENTRAL</b>   |            |       |        |            |       |        |            |        |        |
| 1949-51-----                | 10.7       | 16.7  | 4.8    | 10.9       | 17.1  | 4.9    | *5.9       | *9.4   | *2.6   |
| 1959-61-----                | 10.1       | 15.9  | 4.6    | 10.4       | 16.5  | 4.8    | 5.1        | *8.1   | *2.2   |
| <b>Ohio</b>                 |            |       |        |            |       |        |            |        |        |
| 1949-51-----                | 11.0       | 17.4  | 4.8    | 11.3       | 17.9  | 4.9    | *5.6       | *8.3   | *2.9   |
| 1959-61-----                | 10.3       | 16.4  | 4.7    | 10.7       | 17.0  | 4.9    | *5.2       | *8.5   | *2.2   |
| <b>Indiana</b>              |            |       |        |            |       |        |            |        |        |
| 1949-51-----                | 12.3       | 19.2  | 5.6    | 12.5       | 19.5  | 5.8    | *7.0       | *12.1  | *2.0   |
| 1959-61-----                | 11.0       | 17.6  | 4.8    | 11.3       | 18.0  | 5.0    | *6.1       | *11.1  | *1.4   |
| <b>Illinois</b>             |            |       |        |            |       |        |            |        |        |
| 1949-51-----                | 10.0       | 15.6  | 4.6    | 10.3       | 16.1  | 4.7    | *5.9       | *9.0   | *3.0   |
| 1959-61-----                | 8.8        | 13.8  | 4.2    | 9.2        | 14.4  | 4.4    | *4.6       | *7.1   | *2.4   |

See footnote at end of table.



Table 4. Age-adjusted suicide rates, by color and sex: United States, geographic division, and State, 1949-51 and 1959-61 (3-year averages)—Con.

| Area                           | Total      |       |        | White      |       |        | Nonwhite   |       |        |
|--------------------------------|------------|-------|--------|------------|-------|--------|------------|-------|--------|
|                                | Both sexes | Male  | Female | Both sexes | Male  | Female | Both sexes | Male  | Female |
| Rate per 100,000 population    |            |       |        |            |       |        |            |       |        |
| <b>EAST NORTH CENTRAL—Con.</b> |            |       |        |            |       |        |            |       |        |
| Michigan                       |            |       |        |            |       |        |            |       |        |
| 1949-51-----                   | 10.2       | 15.7  | 4.5    | 10.4       | 16.1  | 4.7    | *5.5       | *9.2  | *1.5   |
| 1959-61-----                   | 10.4       | 16.2  | 4.9    | 10.9       | 16.9  | 5.1    | *5.1       | *8.1  | *2.3   |
| Wisconsin                      |            |       |        |            |       |        |            |       |        |
| 1949-51-----                   | 10.9       | 17.1  | *4.6   | (1)        | (1)   | (1)    | (1)        | (1)   | (1)    |
| 1959-61-----                   | 10.8       | 17.5  | *4.3   | 10.8       | 17.7  | *4.3   | *4.9       | *7.4  | *2.4   |
| <b>WEST NORTH CENTRAL</b>      |            |       |        |            |       |        |            |       |        |
| 1949-51-----                   | 10.7       | 17.2  | 4.3    | 10.8       | 17.5  | 4.3    | *5.5       | *8.7  | *2.6   |
| 1959-61-----                   | 10.4       | 17.0  | 4.3    | 10.6       | 17.3  | 4.3    | *6.6       | *10.0 | *3.5   |
| Minnesota                      |            |       |        |            |       |        |            |       |        |
| 1949-51-----                   | 10.0       | 16.4  | *3.5   | (1)        | (1)   | (1)    | (1)        | (1)   | (1)    |
| 1959-61-----                   | 9.4        | 15.6  | *3.5   | 9.5        | 15.7  | *3.5   | *6.0       | *8.0  | *3.7   |
| Iowa                           |            |       |        |            |       |        |            |       |        |
| 1949-51-----                   | 11.8       | 19.2  | *4.5   | (1)        | (1)   | (1)    | (1)        | (1)   | (1)    |
| 1959-61-----                   | 11.0       | 18.4  | *4.1   | 11.1       | 18.4  | *4.1   | *6.4       | *10.3 | *2.8   |
| Missouri                       |            |       |        |            |       |        |            |       |        |
| 1949-51-----                   | 10.2       | 16.2  | 4.6    | 10.6       | 16.8  | *4.7   | *5.5       | *8.2  | *3.1   |
| 1959-61-----                   | 11.1       | 17.9  | 5.0    | 11.5       | 18.6  | 5.0    | *6.5       | *9.3  | *4.0   |
| North Dakota                   |            |       |        |            |       |        |            |       |        |
| 1949-51-----                   | *9.7       | *15.6 | *3.1   | (1)        | (1)   | (1)    | (1)        | (1)   | (1)    |
| 1959-61-----                   | *9.1       | *14.7 | *3.1   | *8.9       | *14.3 | *3.1   | *15.8      | *31.5 | -      |
| South Dakota                   |            |       |        |            |       |        |            |       |        |
| 1949-51-----                   | *9.9       | *15.8 | *3.4   | (1)        | (1)   | (1)    | (1)        | (1)   | (1)    |
| 1959-61-----                   | *9.2       | *15.1 | *3.1   | *8.9       | *14.5 | *3.2   | *15.7      | *30.7 | -      |
| Nebraska                       |            |       |        |            |       |        |            |       |        |
| 1949-51-----                   | 11.0       | 18.1  | *3.9   | (1)        | (1)   | (1)    | (1)        | (1)   | (1)    |
| 1959-61-----                   | 10.2       | 16.7  | *4.1   | 10.3       | 17.0  | *4.0   | *5.7       | *4.9  | *6.9   |
| Kansas                         |            |       |        |            |       |        |            |       |        |
| 1949-51-----                   | 11.5       | 18.1  | *5.0   | 11.7       | 18.6  | *5.1   | *4.5       | *6.3  | *2.8   |
| 1959-61-----                   | 10.9       | 17.3  | *4.8   | 11.1       | 17.7  | *5.0   | *4.5       | *8.2  | *0.7   |
| <b>SOUTH ATLANTIC</b>          |            |       |        |            |       |        |            |       |        |
| 1949-51-----                   | 10.2       | 16.5  | 4.3    | 11.9       | 19.1  | 5.1    | 4.0        | 6.8   | *1.3   |
| 1959-61-----                   | 11.4       | 18.5  | 4.8    | 13.0       | 20.9  | 5.6    | 4.7        | 8.1   | *1.6   |
| Delaware                       |            |       |        |            |       |        |            |       |        |
| 1949-51-----                   | *10.9      | *15.7 | *6.6   | *11.5      | *16.8 | *6.6   | *8.0       | *9.4  | *6.5   |
| 1959-61-----                   | *11.9      | *18.1 | *6.2   | *12.4      | *18.7 | *6.5   | *8.8       | *13.9 | *3.7   |
| Maryland                       |            |       |        |            |       |        |            |       |        |
| 1949-51-----                   | 11.4       | 17.8  | *5.2   | 12.5       | 19.4  | *5.9   | *5.2       | *8.7  | *1.5   |
| 1959-61-----                   | 10.8       | 16.9  | *5.2   | 11.7       | 18.5  | *5.5   | *5.3       | *7.8  | *2.9   |
| District of Columbia           |            |       |        |            |       |        |            |       |        |
| 1949-51-----                   | *11.5      | *18.9 | *5.4   | *13.8      | *22.3 | *7.1   | *6.3       | *11.6 | *1.5   |
| 1959-61-----                   | *9.7       | *14.5 | *5.5   | *13.9      | *20.4 | *8.8   | *5.1       | *8.2  | *2.3   |
| Virginia                       |            |       |        |            |       |        |            |       |        |
| 1949-51-----                   | 11.4       | 18.1  | *4.8   | 13.2       | 20.8  | *5.8   | *4.7       | *8.2  | *1.1   |
| 1959-61-----                   | 13.6       | 22.2  | 5.4    | 15.3       | 25.0  | 6.2    | *6.2       | *10.5 | *2.0   |
| West Virginia                  |            |       |        |            |       |        |            |       |        |
| 1949-51-----                   | 10.7       | 16.9  | *4.2   | 11.1       | 17.7  | *4.5   | *3.2       | *5.7  | *0.6   |
| 1959-61-----                   | 11.9       | 20.0  | *4.2   | 12.2       | 20.6  | *4.3   | *5.1       | *8.1  | *2.6   |

See footnote at end of table.

Table 4. Age-adjusted suicide rates, by color and sex: United States, geographic division, and State, 1949-51 and 1959-61 (3-year averages)—Con.

| Area                        | Total      |       |        | White      |       |        | Nonwhite   |       |        |
|-----------------------------|------------|-------|--------|------------|-------|--------|------------|-------|--------|
|                             | Both sexes | Male  | Female | Both sexes | Male  | Female | Both sexes | Male  | Female |
| Rate per 100,000 population |            |       |        |            |       |        |            |       |        |
| SOUTH ATLANTIC—Con.         |            |       |        |            |       |        |            |       |        |
| North Carolina              |            |       |        |            |       |        |            |       |        |
| 1949-51-----                | 8.8        | 15.3  | *2.6   | 10.1       | 17.4  | *3.0   | *4.5       | *8.0  | *1.4   |
| 1959-61-----                | 10.6       | 18.3  | *3.6   | 12.1       | 20.6  | *4.2   | *5.2       | *9.5  | *1.2   |
| South Carolina              |            |       |        |            |       |        |            |       |        |
| 1949-51-----                | 7.6        | 12.7  | *3.0   | 10.3       | 16.9  | *4.2   | *2.4       | *4.2  | *0.8   |
| 1959-61-----                | 8.3        | 14.1  | *3.2   | 10.5       | 17.4  | *4.2   | *3.3       | *6.0  | *1.0   |
| Georgia                     |            |       |        |            |       |        |            |       |        |
| 1949-51-----                | 9.3        | 15.4  | *3.7   | 11.5       | 18.9  | *4.6   | *3.6       | *6.3  | *1.4   |
| 1959-61-----                | 10.4       | 17.6  | 4.0    | 12.5       | 20.9  | *4.9   | *4.0       | *7.1  | *1.4   |
| Florida                     |            |       |        |            |       |        |            |       |        |
| 1949-51-----                | 11.4       | 17.4  | 5.7    | 13.5       | 20.4  | 6.9    | *2.8       | *4.3  | *1.5   |
| 1959-61-----                | 12.8       | 19.7  | 6.3    | 14.4       | 22.1  | 7.2    | *4.0       | *6.8  | *1.5   |
| EAST SOUTH CENTRAL          |            |       |        |            |       |        |            |       |        |
| 1949-51-----                | 8.3        | 13.6  | 3.2    | 9.9        | 16.1  | 3.9    | *2.8       | *4.8  | *1.0   |
| 1959-61-----                | 9.4        | 16.1  | 3.3    | 10.7       | 18.2  | 3.8    | 4.0        | 7.0   | *1.4   |
| Kentucky                    |            |       |        |            |       |        |            |       |        |
| 1949-51-----                | 10.0       | 15.7  | *4.3   | 10.6       | 16.7  | *4.5   | *2.5       | *3.8  | *1.3   |
| 1959-61-----                | 10.6       | 18.1  | *3.4   | 10.8       | 18.5  | *3.4   | *7.7       | *13.1 | *2.6   |
| Tennessee                   |            |       |        |            |       |        |            |       |        |
| 1949-51-----                | 8.6        | 13.9  | *3.5   | 9.6        | 15.5  | *4.0   | *3.4       | *5.6  | *1.5   |
| 1959-61-----                | 9.6        | 16.2  | *3.7   | 10.6       | 17.8  | *4.1   | *4.1       | *7.0  | *1.6   |
| Alabama                     |            |       |        |            |       |        |            |       |        |
| 1949-51-----                | 7.2        | 12.3  | *2.3   | 9.1        | 15.4  | *3.0   | *2.7       | *4.9  | *0.8   |
| 1959-61-----                | 9.4        | 16.4  | *3.1   | 11.5       | 20.0  | *3.7   | *3.5       | *6.0  | *1.4   |
| Mississippi                 |            |       |        |            |       |        |            |       |        |
| 1949-51-----                | 7.1        | 11.7  | *2.6   | 10.2       | 16.8  | *3.8   | *2.6       | *4.4  | *0.9   |
| 1959-61-----                | 7.3        | 12.2  | *2.9   | 9.5        | *15.4 | *4.0   | *3.4       | *6.3  | *1.0   |
| WEST SOUTH CENTRAL          |            |       |        |            |       |        |            |       |        |
| 1949-51-----                | 8.4        | 13.5  | 3.5    | 9.4        | 14.9  | 3.9    | *3.2       | *5.5  | *1.1   |
| 1959-61-----                | 8.9        | 14.6  | 3.7    | 9.7        | 15.8  | 4.1    | 4.4        | 7.7   | *1.4   |
| Arkansas                    |            |       |        |            |       |        |            |       |        |
| 1949-51-----                | 7.3        | 12.2  | *2.4   | 8.7        | 14.5  | *2.8   | *2.3       | *3.6  | *1.0   |
| 1959-61-----                | 7.5        | 11.7  | *3.6   | 8.3        | 13.1  | *3.8   | *3.9       | *5.8  | *2.4   |
| Louisiana                   |            |       |        |            |       |        |            |       |        |
| 1949-51-----                | 6.8        | 11.3  | *2.6   | 8.6        | 13.9  | *3.4   | *3.0       | *5.4  | *0.9   |
| 1959-61-----                | 8.4        | 14.0  | *3.3   | 10.4       | 16.9  | *4.5   | *3.6       | *6.9  | *0.7   |
| Oklahoma                    |            |       |        |            |       |        |            |       |        |
| 1949-51-----                | 8.1        | 12.8  | *3.4   | 8.5        | 13.3  | *3.7   | *4.0       | *7.4  | *1.0   |
| 1959-61-----                | 9.1        | 15.1  | *3.6   | 9.4        | 15.4  | *3.8   | *5.7       | *11.2 | *1.0   |
| Texas                       |            |       |        |            |       |        |            |       |        |
| 1949-51-----                | 9.3        | 14.6  | 4.0    | 10.1       | 15.8  | 4.4    | *3.6       | *6.0  | *1.3   |
| 1959-61-----                | 9.4        | 15.2  | 3.8    | 9.9        | 16.2  | 4.1    | *4.9       | *8.3  | *1.8   |
| MOUNTAIN                    |            |       |        |            |       |        |            |       |        |
| 1949-51-----                | 14.1       | 21.9  | 5.8    | 14.2       | 22.1  | 5.8    | *11.4      | *17.0 | *4.8   |
| 1959-61-----                | 14.6       | 23.2  | 6.1    | 14.5       | 23.0  | 6.0    | *14.9      | *22.8 | *6.9   |
| Montana                     |            |       |        |            |       |        |            |       |        |
| 1949-51-----                | 16.0       | *24.6 | *6.0   | (1)        | (1)   | (1)    | (1)        | (1)   | (1)    |
| 1959-61-----                | *15.3      | *23.2 | *6.9   | *15.4      | *23.5 | *6.8   | *9.4       | *10.7 | *8.0   |

See footnote at end of table.

Table 4. Age-adjusted suicide rates, by color and sex: United States, geographic division, and State, 1949-51 and 1959-61 (3-year averages)—Con.

| Area   | Total      |       |        | White      |       |        | Nonwhite   |       |        |
|--|------------|-------|--------|------------|-------|--------|------------|-------|--------|
|  | Both sexes | Male  | Female | Both sexes | Male  | Female | Both sexes | Male  | Female |
| MOUNTAIN—Con. <span style="float: right;">Rate per 100,000 population</span> |            |       |        |            |       |        |            |       |        |
| Idaho  |            |       |        | (1)        | (1)   | (1)    | (1)        | (1)   | (1)    |
| 1949-51-----   | *12.9      | *20.7 | *4.3   | (1)        | (1)   | (1)    | (1)        | (1)   | (1)    |
| 1959-61-----   | 13.5       | *21.3 | *5.6   | 13.4       | *21.1 | *5.5   | *19.4      | *26.8 | *8.5   |
| Wyoming  |            |       |        | (1)        | (1)   | (1)    | (1)        | (1)   | (1)    |
| 1949-51-----   | *16.7      | *25.9 | *5.8   | (1)        | (1)   | (1)    | (1)        | (1)   | (1)    |
| 1959-61-----   | *17.3      | *27.8 | *6.0   | *17.1      | *27.9 | *5.6   | *23.9      | *24.3 | *23.3  |
| Colorado   |            |       |        | (1)        | (1)   | (1)    | (1)        | (1)   | (1)    |
| 1949-51-----   | 15.3       | 23.5  | *7.1   | (1)        | (1)   | (1)    | (1)        | (1)   | (1)    |
| 1959-61-----   | 15.2       | 24.5  | *6.3   | 15.4       | 24.8  | *6.3   | *8.4       | *10.4 | *6.1   |
| New Mexico   |            |       |        | (1)        | (1)   | (1)    | (1)        | (1)   | (1)    |
| 1949-51-----   | *10.3      | *16.5 | *3.7   | *10.4      | *16.6 | *3.8   | *8.4       | *14.6 | *1.6   |
| 1959-61-----   | 12.5       | 19.6  | *5.4   | 12.2       | *18.8 | *5.5   | *16.3      | *29.1 | *3.6   |
| Arizona  |            |       |        | (1)        | (1)   | (1)    | (1)        | (1)   | (1)    |
| 1949-51-----   | 13.8       | *21.0 | *6.2   | *13.9      | *21.2 | *6.2   | *11.0      | *17.6 | *3.4   |
| 1959-61-----   | 13.6       | 21.0  | *6.2   | 13.3       | 20.8  | *6.0   | *14.8      | *22.5 | *7.2   |
| Utah   |            |       |        | (1)        | (1)   | (1)    | (1)        | (1)   | (1)    |
| 1949-51-----   | *9.8       | *15.9 | *3.5   | (1)        | (1)   | (1)    | (1)        | (1)   | (1)    |
| 1959-61-----   | *11.4      | *19.1 | *4.0   | *11.2      | *18.6 | *4.0   | *25.3      | *43.3 | *4.8   |
| Nevada   |            |       |        | (1)        | (1)   | (1)    | (1)        | (1)   | (1)    |
| 1949-51-----   | *25.9      | *36.0 | *13.4  | (1)        | (1)   | (1)    | (1)        | (1)   | (1)    |
| 1959-61-----   | *26.8      | *40.8 | *10.7  | *26.9      | *40.9 | *10.6  | *21.1      | *30.7 | *10.3  |
| PACIFIC  |            |       |        |            |       |        |            |       |        |
| 1949-51-----   | 15.8       | 24.2  | 7.6    | 16.0       | 24.6  | 7.7    | *11.7      | *17.1 | *5.0   |
| 1959-61-----   | 14.9       | 21.5  | 8.5    | 15.3       | 22.2  | 8.9    | 10.1       | 14.4  | *5.2   |
| Washington   |            |       |        |            |       |        |            |       |        |
| 1949-51-----   | 15.1       | 23.6  | *6.1   | 15.1       | 23.5  | *6.2   | *16.7      | *24.3 | *4.7   |
| 1959-61-----   | 13.6       | 20.3  | 7.0    | 13.5       | 20.3  | 6.9    | *14.9      | *17.4 | *12.3  |
| Oregon   |            |       |        | (1)        | (1)   | (1)    | (1)        | (1)   | (1)    |
| 1949-51-----   | 14.5       | 22.2  | *6.4   | (1)        | (1)   | (1)    | (1)        | (1)   | (1)    |
| 1959-61-----   | 12.2       | 19.7  | *4.9   | 12.2       | 19.9  | *4.9   | *10.0      | *12.1 | *8.0   |
| California   |            |       |        |            |       |        |            |       |        |
| 1949-51-----   | 16.2       | 24.6  | 8.0    | 16.5       | 25.3  | 8.2    | *11.0      | *16.0 | *4.8   |
| 1959-61-----   | 15.6       | 22.2  | 9.4    | 16.0       | 22.8  | 9.7    | 9.8        | 14.4  | *4.8   |
| Alaska   |            |       |        |            |       |        |            |       |        |
| 1959-61-----   | *19.7      | *26.4 | *9.6   | *21.7      | *29.3 | *9.1   | *13.5      | *15.1 | *11.2  |
| Hawaii   |            |       |        |            |       |        |            |       |        |
| 1959-61-----   | *9.7       | *14.6 | *3.7   | *10.5      | *17.4 | *3.2   | *9.2       | *13.6 | *3.9   |

<sup>1</sup>Rate not computed where the 1950 population for nonwhite races formed less than 10 percent of the total population and numbered less than 50,000.

Table 5. Suicide rates, by age, color, and sex: United States, geographic division, and State, 1959-61  
(3-year average)

| Color, sex, and geographic area | All ages | 5-14 years                  | 15-24 years | 25-34 years | 35-44 years | 45-54 years | 55-64 years | 65-74 years | 75-84 years | 85 years and over |
|---------------------------------|----------|-----------------------------|-------------|-------------|-------------|-------------|-------------|-------------|-------------|-------------------|
| <u>Total, both sexes</u>        |          | Rate per 100,000 population |             |             |             |             |             |             |             |                   |
| United States-----              | 10.5     | 0.2                         | 5.1         | 10.0        | 14.0        | 20.3        | 23.7        | 23.2        | 27.5        | 25.6              |
| New England-----                | 9.2      | *0.3                        | 4.7         | 9.4         | 11.2        | 15.8        | 18.7        | 20.3        | 22.5        | 21.3              |
| Maine-----                      | 12.3     | *0.3                        | 6.2         | 12.4        | 11.2        | 27.4        | 24.3        | 24.7        | 38.8        | *38.7             |
| New Hampshire-----              | 11.8     | -                           | *5.9        | 12.0        | 15.7        | 15.4        | 26.7        | 24.8        | 33.4        | *48.7             |
| Vermont-----                    | 15.2     | *0.4                        | *4.3        | *9.9        | 19.1        | 26.3        | 30.2        | 53.2        | *39.2       | *52.2             |
| Massachusetts-----              | 8.3      | *0.4                        | 4.6         | 8.4         | 10.7        | 14.2        | 16.5        | 15.7        | 18.2        | *12.2             |
| Rhode Island-----               | 6.4      | -                           | *3.1        | 8.3         | *5.0        | 11.1        | 13.0        | 17.9        | *10.7       | *26.0             |
| Connecticut-----                | 9.4      | *0.3                        | 4.6         | 9.8         | 12.1        | 15.0        | 19.7        | 23.3        | 22.9        | *16.6             |
| Middle Atlantic-----            | 9.4      | 0.2                         | 4.3         | 8.0         | 10.2        | 15.4        | 20.5        | 23.2        | 25.4        | 26.6              |
| New York-----                   | 9.5      | *0.1                        | 4.7         | 8.1         | 9.7         | 14.9        | 20.3        | 23.4        | 25.9        | 31.4              |
| New Jersey-----                 | 8.3      | *0.2                        | 3.3         | 6.8         | 8.7         | 13.8        | 20.9        | 20.1        | 22.7        | 29.8              |
| Pennsylvania-----               | 9.8      | *0.2                        | 4.3         | 8.7         | 11.8        | 17.0        | 20.7        | 24.4        | 25.9        | 18.7              |
| East North Central-----         | 10.2     | 0.2                         | 4.7         | 8.9         | 12.6        | 19.5        | 23.1        | 24.9        | 31.2        | 28.4              |
| Ohio-----                       | 10.5     | *0.3                        | 4.2         | 9.1         | 13.9        | 19.2        | 23.3        | 27.8        | 31.6        | 32.3              |
| Indiana-----                    | 11.0     | *0.4                        | 5.0         | 9.8         | 15.8        | 20.6        | 24.2        | 24.6        | 33.2        | 38.8              |
| Illinois-----                   | 9.4      | *0.2                        | 4.4         | 7.9         | 10.7        | 16.0        | 20.2        | 23.7        | 30.4        | 22.4              |
| Michigan-----                   | 10.0     | *0.2                        | 5.3         | 9.2         | 11.7        | 22.5        | 23.9        | 23.1        | 32.5        | 24.4              |
| Wisconsin-----                  | 11.0     | *0.1                        | 5.3         | 9.1         | 12.1        | 22.6        | 27.5        | 25.0        | 28.3        | *26.5             |
| West North Central-----         | 10.9     | 0.2                         | 4.8         | 8.9         | 13.1        | 21.3        | 25.6        | 24.2        | 26.7        | 27.0              |
| Minnesota-----                  | 9.4      | *0.2                        | 5.1         | 8.5         | 11.2        | 19.2        | 22.0        | 21.3        | 23.6        | *24.0             |
| Iowa-----                       | 11.7     | *0.1                        | 3.8         | 9.2         | 14.1        | 22.6        | 29.4        | 28.4        | 23.4        | *20.8             |
| Missouri-----                   | 12.0     | *0.4                        | 5.3         | 9.5         | 14.7        | 21.3        | 26.7        | 25.5        | 29.7        | 30.0              |
| North Dakota-----               | 8.4      | *0.2                        | *3.7        | 10.0        | 11.0        | 18.1        | 23.9        | 17.6        | *15.3       | *10.0             |
| South Dakota-----               | 8.9      | *0.5                        | *4.4        | *6.0        | 13.3        | 18.9        | 27.2        | 17.0        | *8.2        | *32.9             |
| Nebraska-----                   | 11.0     | *0.2                        | 3.8         | 8.1         | 11.7        | 22.9        | 24.1        | 26.9        | 30.2        | 31.9              |
| Kansas-----                     | 11.3     | -                           | 5.6         | 9.4         | 13.0        | 23.8        | 24.7        | 22.0        | 34.7        | *32.3             |
| South Atlantic-----             | 10.7     | 0.2                         | 5.0         | 11.3        | 17.1        | 22.7        | 26.2        | 20.0        | 23.5        | 17.1              |
| Delaware-----                   | 11.6     | *0.4                        | *2.3        | 11.2        | 16.5        | 27.4        | 32.0        | *19.9       | *32.9       | -                 |
| Maryland-----                   | 10.4     | *0.1                        | 4.3         | 10.5        | 15.2        | 20.4        | 25.7        | 25.0        | 26.4        | *24.0             |
| District of Columbia-----       | 10.2     | *0.3                        | *5.5        | 10.7        | 14.7        | 18.0        | 22.4        | 14.4        | *10.7       | *8.1              |
| Virginia-----                   | 12.6     | *0.2                        | 6.6         | 12.7        | 18.8        | 28.3        | 31.9        | 27.0        | 24.7        | *18.0             |
| West Virginia-----              | 11.6     | *0.1                        | 4.7         | 13.1        | 16.1        | 23.0        | 25.9        | 26.0        | 29.3        | *23.6             |
| North Carolina-----             | 9.5      | *0.2                        | 4.5         | 10.6        | 17.9        | 19.5        | 25.6        | 17.9        | 16.4        | *12.2             |
| South Carolina-----             | 7.1      | *0.1                        | 3.8         | 8.2         | 13.8        | 17.4        | 17.5        | 12.2        | 16.8        | *13.4             |
| Georgia-----                    | 9.4      | *0.2                        | 5.0         | 10.3        | 15.0        | 21.7        | 24.8        | 14.9        | 22.1        | *8.4              |
| Florida-----                    | 13.0     | *0.3                        | 5.6         | 13.3        | 20.4        | 25.7        | 27.4        | 19.4        | 27.4        | *23.5             |
| East South Central-----         | 8.9      | *0.2                        | 3.7         | 9.8         | 13.1        | 19.6        | 20.6        | 18.3        | 23.2        | 15.2              |
| Kentucky-----                   | 10.2     | *0.2                        | 3.7         | 11.6        | 13.7        | 21.9        | 24.0        | 21.2        | 27.8        | *17.0             |
| Tennessee-----                  | 9.4      | *0.2                        | 3.1         | 9.7         | 13.5        | 20.1        | 22.4        | 20.5        | 22.1        | *14.8             |
| Alabama-----                    | 8.6      | *0.1                        | 5.0         | 9.6         | 13.8        | 18.5        | 19.5        | 16.1        | 25.5        | *9.4              |
| Mississippi-----                | 6.5      | *0.1                        | 2.8         | 7.6         | 9.9         | 17.3        | 14.1        | 13.7        | 14.2        | *20.1             |
| West South Central-----         | 8.5      | 0.2                         | 4.8         | 8.5         | 12.7        | 17.1        | 20.1        | 18.4        | 18.2        | 18.9              |
| Arkansas-----                   | 7.6      | *0.4                        | 3.7         | 7.6         | 8.0         | 15.1        | 19.5        | 15.7        | 15.5        | *12.0             |
| Louisiana-----                  | 7.6      | *0.0                        | 4.8         | 7.7         | 12.4        | 17.5        | 18.6        | 14.3        | 17.6        | *9.6              |
| Oklahoma-----                   | 9.2      | *0.1                        | 3.8         | 9.9         | 14.6        | 17.8        | 17.7        | 18.6        | 17.4        | *16.1             |
| Texas-----                      | 8.8      | *0.2                        | 5.2         | 8.5         | 13.2        | 17.3        | 21.5        | 20.4        | 19.5        | 24.7              |
| Mountain-----                   | 13.3     | *0.3                        | 8.2         | 15.3        | 20.7        | 28.7        | 30.6        | 27.0        | 29.6        | 28.7              |
| Montana-----                    | 14.9     | *0.2                        | *7.0        | 13.6        | 22.5        | 30.0        | 36.6        | 30.2        | *31.4       | *50.0             |
| Idaho-----                      | 12.8     | -                           | *6.4        | 11.2        | 23.1        | 21.2        | 30.6        | 29.2        | 48.2        | *51.5             |
| Wyoming-----                    | 16.3     | *0.5                        | *9.1        | 18.3        | 26.8        | 31.5        | *18.3       | 62.6        | *33.3       | *25.3             |
| Colorado-----                   | 14.4     | *0.5                        | 7.0         | 15.0        | 22.0        | 32.8        | 31.6        | 28.8        | 28.2        | *22.9             |
| New Mexico-----                 | 10.3     | *0.7                        | 10.4        | 14.9        | 14.3        | 27.0        | 20.8        | 21.0        | *12.4       | *11.8             |
| Arizona-----                    | 12.2     | *0.1                        | 8.2         | 15.3        | 19.5        | 24.9        | 32.3        | 18.3        | *23.7       | *24.4             |
| Utah-----                       | 9.6      | *0.3                        | 8.5         | 13.9        | 15.3        | 23.2        | 19.2        | *15.2       | *23.1       | *20.5             |
| Nevada-----                     | 26.2     | -                           | *13.2       | 29.8        | 35.4        | 47.5        | 71.9        | *42.2       | *63.4       | *41.6             |
| Pacific-----                    | 14.9     | 0.4                         | 7.3         | 13.9        | 20.5        | 29.7        | 32.4        | 30.2        | 41.2        | 40.0              |
| Washington-----                 | 13.8     | *0.4                        | 6.2         | 12.0        | 18.8        | 27.2        | 31.1        | 27.8        | 37.9        | 44.0              |
| Oregon-----                     | 12.6     | *1.0                        | 5.1         | 13.6        | 17.4        | 21.0        | 25.4        | 25.7        | 35.8        | *26.5             |
| California-----                 | 15.6     | 0.4                         | 7.7         | 14.4        | 21.4        | 31.5        | 33.9        | 31.5        | 42.0        | 39.7              |
| Alaska-----                     | 14.9     | *0.7                        | *11.5       | 18.5        | 27.1        | 36.9        | *21.9       | *44.5       | *123.1      | *116.1            |
| Hawaii-----                     | 8.1      | *0.2                        | 7.0         | 7.5         | 10.4        | 16.2        | 20.3        | *20.4       | *58.8       | *84.4             |

See note at end of table.

Table 5. Suicide rates, by age, color, and sex: United States, geographic division, and State, 1959-61 (3-year average)—Con.

| Color, sex, and geographic area | All ages | 5-14 years | 15-24 years | 25-34 years | 35-44 years | 45-54 years | 55-64 years | 65-74 years | 75-84 years | 85 years and over |
|---------------------------------|----------|------------|-------------|-------------|-------------|-------------|-------------|-------------|-------------|-------------------|
| <u>Total, male</u>              |          |            |             |             |             |             |             |             |             |                   |
| Rate per 100,000 population     |          |            |             |             |             |             |             |             |             |                   |
| United States-----              | 16.4     | 0.4        | 8.0         | 14.6        | 20.9        | 31.2        | 38.4        | 39.9        | 52.8        | 58.1              |
| New England-----                | 14.6     | *0.6       | 7.9         | 14.0        | 17.4        | 24.4        | 30.2        | 36.2        | 44.9        | 55.2              |
| Maine-----                      | 19.6     | *0.7       | *9.3        | 19.2        | 18.2        | 42.3        | 41.1        | 40.0        | 74.7        | *90.2             |
| New Hampshire-----              | 19.1     | -          | *10.0       | 19.7        | 24.2        | 25.7        | 39.2        | 45.8        | *71.7       | *138.0            |
| Vermont-----                    | 27.1     | *0.8       | *7.4        | *17.0       | 36.3        | 41.9        | 52.9        | 111.5       | *82.9       | *118.5            |
| Massachusetts-----              | 13.1     | *0.8       | 7.9         | 12.4        | 16.9        | 22.1        | 27.7        | 26.8        | 38.9        | *30.6             |
| Rhode Island-----               | 9.7      | -          | *4.8        | *12.3       | *8.6        | 16.5        | 18.4        | 31.6        | *20.1       | *72.3             |
| Connecticut-----                | 14.3     | *0.6       | 8.0         | 14.2        | 16.9        | 22.5        | 29.6        | 42.0        | 36.4        | *45.3             |
| Middle Atlantic-----            | 14.1     | 0.3        | 6.8         | 11.5        | 14.6        | 23.1        | 31.4        | 38.2        | 47.1        | 60.8              |
| New York-----                   | 13.9     | *0.2       | 7.3         | 11.5        | 13.3        | 22.5        | 29.8        | 37.2        | 45.3        | 70.6              |
| New Jersey-----                 | 12.3     | *0.4       | 5.1         | 9.6         | 12.9        | 19.7        | 33.1        | 30.9        | 43.0        | 73.9              |
| Pennsylvania-----               | 15.4     | *0.3       | 7.1         | 12.7        | 17.5        | 25.9        | 33.1        | 43.3        | 51.4        | 42.2              |
| East North Central-----         | 16.0     | 0.4        | 7.8         | 13.2        | 18.3        | 29.6        | 36.6        | 42.9        | 60.9        | 65.4              |
| Ohio-----                       | 16.4     | *0.6       | 6.9         | 13.8        | 21.6        | 28.8        | 36.2        | 46.8        | 62.2        | 72.1              |
| Indiana-----                    | 17.5     | *0.6       | 8.3         | 13.8        | 23.4        | 32.5        | 40.3        | 44.6        | 60.9        | 91.0              |
| Illinois-----                   | 14.4     | *0.3       | 7.1         | 11.7        | 14.3        | 24.1        | 32.1        | 41.7        | 58.6        | 52.2              |
| Michigan-----                   | 15.5     | *0.3       | 9.1         | 13.9        | 15.9        | 33.3        | 36.7        | 39.0        | 66.0        | 56.4              |
| Wisconsin-----                  | 17.8     | *0.1       | 8.9         | 13.4        | 19.8        | 35.7        | 44.6        | 42.1        | 56.0        | *60.8             |
| West North Central-----         | 17.7     | *0.4       | 7.8         | 12.9        | 20.6        | 34.3        | 43.1        | 42.2        | 50.4        | 58.5              |
| Minnesota-----                  | 15.6     | *0.4       | 8.3         | 13.4        | 18.3        | 30.1        | 36.8        | 38.7        | 45.6        | *53.4             |
| Iowa-----                       | 19.3     | *0.2       | 6.9         | 12.8        | 22.7        | 38.6        | 49.5        | 49.9        | 43.7        | *48.8             |
| Missouri-----                   | 19.2     | *0.6       | 8.2         | 13.7        | 22.4        | 34.1        | 44.6        | 44.5        | 58.1        | 62.4              |
| North Dakota-----               | 13.8     | *0.5       | *5.9        | *14.3       | 17.8        | 31.0        | 42.1        | *24.0       | *30.0       | -                 |
| South Dakota-----               | 14.8     | *0.5       | *6.6        | *10.2       | 22.8        | 30.8        | 43.4        | 29.5        | *16.6       | *72.5             |
| Nebraska-----                   | 17.8     | *0.5       | *6.6        | 12.2        | 18.4        | 36.4        | 41.8        | 43.3        | 54.6        | *69.6             |
| Kansas-----                     | 17.9     | -          | 9.6         | 11.6        | 19.5        | 36.4        | 42.5        | 41.2        | 64.1        | 73.7              |
| South Atlantic-----             | 17.1     | *0.3       | 7.5         | 16.9        | 27.3        | 36.8        | 44.3        | 35.9        | 46.3        | 39.5              |
| Delaware-----                   | 17.3     | *0.7       | *3.6        | *15.1       | 23.9        | 35.6        | 57.8        | *33.9       | *61.7       | -                 |
| Maryland-----                   | 15.9     | *0.2       | 6.4         | 14.3        | 21.8        | 31.2        | 41.8        | 45.3        | 55.6        | *60.5             |
| District of Columbia-----       | 14.9     | *0.6       | *9.1        | 14.0        | 21.0        | 31.0        | 34.2        | *15.7       | *24.4       | -                 |
| Virginia-----                   | 20.2     | *0.2       | 9.8         | 19.6        | 29.5        | 45.0        | 54.5        | 50.0        | 51.4        | *45.9             |
| West Virginia-----              | 19.5     | *0.2       | 7.6         | 22.3        | 26.6        | 37.7        | 44.3        | 44.9        | 55.6        | *52.6             |
| North Carolina-----             | 16.0     | *0.3       | 6.7         | 17.4        | 30.1        | 33.5        | 46.2        | 34.5        | 34.6        | *31.3             |
| South Carolina-----             | 11.6     | *0.2       | 5.1         | 12.1        | 21.8        | 30.2        | 32.5        | 25.8        | *35.1       | *36.5             |
| Georgia-----                    | 15.5     | *0.4       | 7.6         | 15.3        | 25.3        | 37.3        | 41.9        | 29.6        | 49.0        | *22.3             |
| Florida-----                    | 19.8     | *0.2       | 8.5         | 18.5        | 32.3        | 39.8        | 43.5        | 31.6        | 45.7        | *44.4             |
| East South Central-----         | 14.9     | *0.3       | 5.9         | 15.6        | 21.1        | 33.8        | 37.0        | 33.7        | 45.7        | 32.7              |
| Kentucky-----                   | 17.3     | *0.2       | 6.2         | 18.7        | 21.7        | 38.5        | 43.7        | 38.1        | 54.2        | *31.4             |
| Tennessee-----                  | 15.5     | *0.4       | 4.9         | 14.7        | 21.8        | 34.7        | 38.3        | 37.6        | 44.0        | *31.5             |
| Alabama-----                    | 14.8     | *0.3       | 7.8         | 15.8        | 22.5        | 32.3        | 37.3        | 30.8        | 52.4        | *23.7             |
| Mississippi-----                | 10.7     | *0.3       | 4.4         | 12.3        | 16.7        | 27.9        | 23.9        | 24.9        | *25.7       | *46.5             |
| West South Central-----         | 13.7     | *0.3       | 6.9         | 12.7        | 19.8        | 28.2        | 34.3        | 33.9        | 36.7        | 43.9              |
| Arkansas-----                   | 12.0     | *0.7       | *4.5        | 10.8        | 11.7        | 24.1        | 33.0        | 27.5        | 28.5        | *26.5             |
| Louisiana-----                  | 12.4     | -          | 6.9         | 11.4        | 19.1        | 29.4        | 34.0        | 27.5        | 37.1        | *24.1             |
| Oklahoma-----                   | 15.2     | *0.1       | 5.2         | 15.2        | 23.0        | 29.8        | 30.9        | 35.4        | 37.4        | *32.3             |
| Texas-----                      | 14.1     | *0.4       | 7.7         | 12.8        | 20.6        | 28.2        | 35.7        | 37.2        | 38.7        | 60.3              |
| Mountain-----                   | 21.0     | *0.6       | 13.2        | 22.4        | 31.9        | 43.6        | 50.4        | 46.5        | 57.7        | 61.3              |
| Montana-----                    | 23.2     | *0.5       | *11.8       | 18.0        | 37.3        | 38.2        | 60.3        | 48.0        | *57.3       | *86.7             |
| Idaho-----                      | 20.4     | -          | *9.9        | *15.6       | 37.0        | 32.7        | 46.0        | 54.1        | 80.3        | *89.5             |
| Wyoming-----                    | 26.6     | -          | *15.2       | *25.5       | 42.0        | 49.6        | *32.0       | 110.9       | *66.6       | *53.8             |
| Colorado-----                   | 23.1     | *0.9       | 11.7        | 22.5        | 34.5        | 51.6        | 49.8        | 51.5        | 60.6        | *57.5             |
| New Mexico-----                 | 16.0     | *1.5       | 15.1        | 22.6        | 21.7        | 40.6        | 34.2        | 38.0        | *25.1       | *26.1             |
| Arizona-----                    | 18.7     | *0.2       | 12.8        | 23.9        | 27.5        | 38.8        | 53.5        | 24.8        | *43.3       | *55.5             |
| Utah-----                       | 15.9     | *0.6       | 15.7        | 18.8        | 24.1        | 40.4        | 34.2        | *26.5       | *47.9       | *49.6             |
| Nevada-----                     | 40.7     | -          | *19.0       | 42.7        | 51.7        | 62.8        | 120.9       | *76.1       | *124.6      | *86.8             |
| Pacific-----                    | 21.2     | 0.7        | 10.9        | 18.7        | 27.1        | 40.2        | 49.4        | 48.2        | 76.2        | 89.2              |
| Washington-----                 | 20.6     | *0.7       | 8.2         | 15.9        | 26.8        | 41.2        | 49.0        | 43.7        | 67.9        | 98.3              |
| Oregon-----                     | 20.3     | *1.6       | 9.1         | 21.5        | 29.1        | 30.4        | 39.7        | 42.9        | 70.0        | *64.2             |
| California-----                 | 21.8     | 0.6        | 11.6        | 19.1        | 27.3        | 41.8        | 51.5        | 50.2        | 78.2        | 90.5              |
| Alaska-----                     | 19.9     | *1.4       | *12.4       | *23.5       | *33.3       | *48.1       | *29.3       | *71.9       | *196.8      | *185.2            |
| Hawaii-----                     | 12.5     | *0.5       | *10.4       | *12.2       | 15.0        | 24.5        | 30.8        | *31.6       | *85.7       | *75.4             |

See note at end of table.

Table 5. Suicide rates, by age, color, and sex: United States, geographic division, and State, 1959-61 (3-year average)—Con.

| Color, sex, and geographic area | All ages | 5-14 years | 15-24 years | 25-34 years | 35-44 years | 45-54 years | 55-64 years | 65-74 years | 75-84 years | 85 years and over |
|---------------------------------|----------|------------|-------------|-------------|-------------|-------------|-------------|-------------|-------------|-------------------|
| <u>Total, female</u>            |          |            |             |             |             |             |             |             |             |                   |
| Rate per 100,000 population     |          |            |             |             |             |             |             |             |             |                   |
| United States-----              | 4.8      | 0.1        | 2.2         | 5.6         | 7.5         | 9.7         | 10.0        | 8.8         | 7.9         | 4.9               |
| New England-----                | 4.1      | -          | 1.5         | 4.9         | 5.4         | 7.7         | 8.6         | 7.5         | 7.2         | *2.9              |
| Maine-----                      | 5.2      | -          | *3.1        | *5.7        | *4.4        | 13.0        | *8.8        | *11.3       | *10.9       | *7.0              |
| New Hampshire-----              | 4.6      | -          | *1.7        | *4.5        | *7.5        | *5.6        | *15.5       | *7.1        | *5.8        | -                 |
| Vermont-----                    | 3.7      | -          | *1.2        | *3.0        | *2.8        | *10.8       | *9.1        | *4.5        | *8.4        | *16.1             |
| Massachusetts-----              | 3.7      | -          | *1.4        | 4.6         | 4.9         | 7.0         | 6.9         | 7.1         | *4.7        | *2.8              |
| Rhode Island-----               | 3.2      | -          | *1.2        | *4.4        | *1.6        | *6.3        | *8.3        | *7.1        | *4.4        | -                 |
| Connecticut-----                | 4.8      | -          | *1.3        | 5.6         | 7.6         | 7.7         | 10.5        | 7.5         | *13.1       | -                 |
| Middle Atlantic-----            | 4.9      | *0.1       | 1.9         | 4.8         | 6.2         | 8.1         | 10.4        | 10.5        | 9.2         | 7.0               |
| New York-----                   | 5.3      | *0.1       | 2.3         | 4.9         | 6.4         | 7.9         | 11.4        | 11.7        | 11.5        | *9.3              |
| New Jersey-----                 | 4.4      | *0.1       | *1.6        | 4.1         | 4.7         | 8.1         | 9.6         | 11.1        | 8.2         | *5.5              |
| Pennsylvania-----               | 4.5      | -          | 1.6         | 5.0         | 6.6         | 8.6         | 9.2         | 8.2         | 6.4         | *4.4              |
| East North Central-----         | 4.6      | *0.1       | 1.8         | 4.7         | 7.0         | 9.5         | 10.0        | 9.0         | 8.1         | *4.7              |
| Ohio-----                       | 4.7      | -          | 1.7         | 4.6         | 6.4         | 9.9         | 11.1        | 11.3        | 8.2         | *7.2              |
| Indiana-----                    | 4.7      | *0.2       | *1.8        | 5.8         | 8.6         | 8.7         | 8.9         | 7.4         | 11.7        | *4.0              |
| Illinois-----                   | 4.4      | *0.0       | 1.8         | 4.2         | 7.3         | 8.1         | 8.8         | 8.2         | 8.8         | *4.1              |
| Michigan-----                   | 4.7      | *0.0       | 1.8         | 4.8         | 7.7         | 11.6        | 10.7        | 7.9         | *5.6        | *3.4              |
| Wisconsin-----                  | 4.2      | *0.2       | *1.8        | 4.8         | 4.5         | 9.4         | 10.7        | 9.0         | *5.3        | *2.5              |
| West North Central-----         | 4.3      | *0.1       | 1.8         | 5.0         | 5.9         | 8.7         | 9.0         | 8.0         | 7.4         | *5.1              |
| Minnesota-----                  | 3.3      | -          | *2.1        | 3.6         | 4.3         | 8.3         | 7.7         | *4.7        | *4.9        | *2.7              |
| Iowa-----                       | 4.3      | -          | *0.9        | 5.6         | 5.9         | 6.8         | 10.5        | 9.2         | *7.7        | *2.5              |
| Missouri-----                   | 5.2      | *0.2       | 2.5         | 5.4         | 7.6         | 9.3         | 10.5        | 9.4         | 7.8         | *8.6              |
| North Dakota-----               | 2.8      | -          | *1.5        | *5.6        | *3.8        | *4.1        | *4.0        | *10.9       | -           | *19.5             |
| South Dakota-----               | 2.9      | *0.5       | *2.2        | *1.7        | *3.4        | *6.7        | *10.2       | *4.3        | -           | -                 |
| Nebraska-----                   | 4.4      | -          | *1.1        | *3.9        | *5.1        | 9.8         | *7.3        | 12.1        | *10.0       | *5.4              |
| Kansas-----                     | 4.7      | -          | *1.6        | 7.1         | 6.5         | 11.4        | 8.0         | *5.4        | *11.3       | *3.4              |
| South Atlantic-----             | 4.5      | *0.1       | 2.4         | 6.0         | 7.5         | 9.2         | 10.1        | 6.4         | 5.8         | *2.5              |
| Delaware-----                   | 5.9      | -          | *1.1        | *7.4        | *9.3        | *19.3       | *7.5        | *7.9        | *11.5       | -                 |
| Maryland-----                   | 5.0      | -          | *2.1        | 6.9         | 8.7         | 9.3         | 10.3        | 8.3         | *7.2        | *4.1              |
| District of Columbia-----       | 6.0      | -          | *2.3        | *7.3        | *9.3        | *7.3        | *12.7       | *13.4       | *2.8        | *11.8             |
| Virginia-----                   | 5.1      | *0.2       | 3.0         | 6.0         | 8.4         | 11.6        | 11.0        | 8.0         | *5.0        | -                 |
| West Virginia-----              | 4.0      | -          | *2.0        | *4.9        | 6.4         | 8.7         | 8.2         | *7.7        | *5.0        | -                 |
| North Carolina-----             | 3.2      | *0.1       | 2.2         | 4.2         | 6.3         | 6.4         | 7.3         | *4.1        | *2.7        | -                 |
| South Carolina-----             | 2.8      | -          | *2.3        | 4.6         | 6.2         | 5.5         | *4.8        | *1.7        | *4.2        | -                 |
| Georgia-----                    | 3.6      | -          | 2.5         | 5.6         | 5.4         | 7.0         | 10.2        | *3.6        | *3.5        | -                 |
| Florida-----                    | 6.4      | *0.4       | 2.7         | 8.2         | 9.2         | 12.6        | 13.5        | 7.6         | 10.2        | *7.4              |
| East South Central-----         | 3.1      | *0.1       | 1.5         | 4.5         | 5.6         | 6.2         | 5.7         | 5.0         | 4.8         | *2.8              |
| Kentucky-----                   | 3.2      | *0.2       | *0.9        | 4.8         | 6.1         | 5.9         | 5.5         | *6.1        | *5.7        | *6.5              |
| Tennessee-----                  | 3.5      | *0.1       | *1.4        | 5.2         | 5.9         | 6.3         | 8.0         | *5.8        | *4.7        | *3.2              |
| Alabama-----                    | 2.8      | -          | *2.3        | 4.0         | 5.9         | 5.6         | *3.6        | *3.9        | *4.1        | -                 |
| Mississippi-----                | 2.6      | -          | *1.2        | *3.5        | *3.9        | 7.3         | *5.2        | *3.6        | *4.6        | -                 |
| West South Central-----         | 3.4      | *0.1       | 2.6         | 4.5         | 6.0         | 6.5         | 6.9         | 4.9         | 3.5         | *1.3              |
| Arkansas-----                   | 3.3      | *0.2       | *2.9        | *4.7        | *4.6        | 6.6         | *7.0        | *4.1        | *3.5        | -                 |
| Louisiana-----                  | 2.9      | *0.1       | 2.8         | 4.2         | 6.1         | 6.1         | *4.4        | *3.4        | *2.7        | -                 |
| Oklahoma-----                   | 3.4      | -          | *2.5        | 4.9         | 6.5         | 6.5         | *5.6        | *4.0        | *0.8        | *3.6              |
| Texas-----                      | 3.6      | *0.1       | 2.6         | 4.5         | 6.0         | 6.6         | 8.0         | 5.8         | *4.8        | *1.3              |
| Mountain-----                   | 5.4      | *0.0       | 3.2         | 8.2         | 9.5         | 13.1        | 10.5        | 7.8         | *4.3        | *4.0              |
| Montana-----                    | 6.2      | -          | *2.2        | *9.2        | *7.1        | 21.0        | *10.7       | *11.2       | *3.6        | *18.5             |
| Idaho-----                      | 5.1      | -          | *2.8        | *6.9        | *9.5        | *8.7        | *13.8       | *3.6        | *15.5       | *19.1             |
| Wyoming-----                    | 5.4      | *1.0       | *3.0        | *10.9       | *11.0       | *11.6       | *2.8        | *8.1        | -           | -                 |
| Colorado-----                   | 5.8      | -          | *2.2        | 7.7         | 9.7         | 14.0        | 14.4        | *8.7        | *2.5        | -                 |
| New Mexico-----                 | 4.5      | -          | *5.6        | *7.1        | *6.8        | *13.1       | *7.2        | *3.8        | -           | -                 |
| Arizona-----                    | 5.6      | -          | *3.6        | *6.7        | 11.5        | 10.8        | *11.4       | *11.7       | *5.7        | -                 |
| Utah-----                       | 3.3      | -          | *1.9        | *8.9        | *6.4        | *5.7        | *4.5        | *4.9        | *3.4        | -                 |
| Nevada-----                     | 10.6     | -          | *7.2        | *16.7       | *18.7       | *30.1       | *6.8        | -           | -           | -                 |
| Pacific-----                    | 8.5      | *0.2       | 3.5         | 9.0         | 14.0        | 18.8        | 15.8        | 14.7        | 14.0        | *9.3              |
| Washington-----                 | 6.8      | *0.1       | 4.1         | 8.1         | 11.0        | 12.5        | 13.1        | 13.0        | *11.3       | *3.7              |
| Oregon-----                     | 5.0      | *0.4       | *1.4        | *6.1        | 6.1         | *11.4       | 10.9        | *9.2        | *5.9        | -                 |
| California-----                 | 9.4      | *0.2       | 3.6         | 9.7         | 15.6        | 21.2        | 17.1        | 15.9        | 15.3        | *10.3             |
| Alaska-----                     | 8.2      | -          | *9.6        | *11.8       | *19.1       | *21.2       | *9.6        | -           | -           | -                 |
| Hawaii-----                     | 3.1      | -          | *2.3        | *2.8        | *5.4        | *4.1        | *6.2        | *7.3        | *27.4       | *95.8             |

See note at end of table.

Table 5. Suicide rates, by age, color, and sex: United States, geographic division, and State, 1959-61 (3-year average)--Con.

| Color, sex, and geographic area | All ages | 5-14 years                  | 15-24 years | 25-34 years | 35-44 years | 45-54 years | 55-64 years | 65-74 years | 75-84 years | 85 years and over |
|---------------------------------|----------|-----------------------------|-------------|-------------|-------------|-------------|-------------|-------------|-------------|-------------------|
| <u>White, both sexes</u>        |          | Rate per 100,000 population |             |             |             |             |             |             |             |                   |
| United States-----              | 11.3     | 0.3                         | 5.2         | 10.2        | 14.8        | 21.6        | 25.1        | 24.5        | 28.8        | 27.1              |
| New England-----                | 9.3      | *0.3                        | 4.8         | 9.3         | 11.3        | 15.9        | 18.7        | 20.5        | 22.6        | 21.1              |
| Maine-----                      | 12.2     | *0.3                        | 6.3         | 12.2        | 11.0        | 27.5        | 23.6        | 24.8        | 38.9        | *38.8             |
| New Hampshire-----              | 11.8     | -                           | *5.9        | 12.1        | 15.7        | 15.4        | 26.8        | 24.8        | 35.5        | *48.8             |
| Vermont-----                    | 15.2     | *0.4                        | *4.3        | *9.9        | 19.2        | 25.5        | 30.3        | 53.3        | *39.3       | *52.3             |
| Massachusetts-----              | 8.3      | *0.4                        | 4.6         | 8.5         | 10.7        | 14.3        | 16.6        | 15.9        | 18.1        | *11.4             |
| Rhode Island-----               | 6.3      | -                           | *2.9        | 7.9         | *5.1        | 10.9        | 12.4        | 18.2        | 10.8        | *26.4             |
| Connecticut-----                | 9.7      | *0.3                        | 4.8         | 9.4         | 12.5        | 15.4        | 19.7        | 23.6        | 23.3        | *16.9             |
| Middle Atlantic-----            | 9.8      | *0.2                        | 4.3         | 7.9         | 10.4        | 16.0        | 21.3        | 23.9        | 26.2        | 27.1              |
| New York-----                   | 9.8      | *0.1                        | 4.5         | 7.9         | 9.8         | 15.4        | 20.9        | 23.8        | 26.5        | 31.3              |
| New Jersey-----                 | 8.7      | *0.2                        | 3.4         | 6.6         | 8.8         | 14.4        | 21.8        | 21.0        | 23.5        | 31.3              |
| Pennsylvania-----               | 10.2     | *0.2                        | 4.3         | 8.5         | 12.1        | 17.8        | 21.6        | 25.3        | 27.0        | 19.5              |
| East North Central-----         | 10.7     | 0.2                         | 4.8         | 8.9         | 13.0        | 20.4        | 24.1        | 25.9        | 32.3        | 29.6              |
| Ohio-----                       | 11.0     | *0.3                        | 4.3         | 9.1         | 14.2        | 20.2        | 24.4        | 29.1        | 32.8        | 33.8              |
| Indiana-----                    | 11.4     | *0.5                        | 4.9         | 9.7         | 16.4        | 21.2        | 24.9        | 25.4        | 34.0        | 40.1              |
| Illinois-----                   | 10.0     | *0.2                        | 4.6         | 8.1         | 11.0        | 16.9        | 21.2        | 24.7        | 31.7        | 23.7              |
| Michigan-----                   | 10.6     | *0.2                        | 5.5         | 9.0         | 12.4        | 23.9        | 25.1        | 24.2        | 33.6        | 25.5              |
| Wisconsin-----                  | 11.2     | *0.1                        | 5.3         | 9.2         | 12.2        | 22.5        | 27.8        | 25.2        | 28.5        | *26.7             |
| West North Central-----         | 11.1     | 0.2                         | 4.7         | 8.9         | 13.2        | 21.7        | 26.3        | 24.5        | 27.4        | 27.8              |
| Minnesota-----                  | 9.5      | *0.2                        | 5.1         | 8.6         | 11.2        | 19.2        | 22.2        | 21.4        | 23.8        | *24.1             |
| Iowa-----                       | 11.7     | *0.1                        | 3.9         | 9.2         | 14.2        | 22.7        | 29.7        | 28.2        | 23.6        | *21.0             |
| Missouri-----                   | 12.7     | *0.4                        | 5.2         | 9.5         | 15.3        | 22.2        | 28.4        | 26.2        | 31.3        | 31.9              |
| North Dakota-----               | 8.4      | *0.2                        | *3.8        | 9.3         | 10.7        | 17.8        | 24.1        | 17.8        | *15.4       | *10.1             |
| South Dakota-----               | 8.8      | *0.5                        | *3.9        | *5.8        | 12.4        | 18.4        | 27.3        | 17.3        | *8.3        | *33.9             |
| Nebraska-----                   | 11.2     | *0.2                        | *3.6        | 8.1         | 11.8        | 23.2        | 24.6        | 27.4        | 30.6        | *32.3             |
| Kansas-----                     | 11.6     | -                           | 5.5         | 9.6         | 13.3        | 24.7        | 25.3        | 22.4        | 35.8        | *33.5             |
| South Atlantic-----             | 12.8     | 0.2                         | 5.4         | 12.5        | 19.8        | 26.5        | 30.1        | 22.9        | 26.6        | 20.8              |
| Delaware-----                   | 12.2     | *0.4                        | *2.1        | *9.9        | 17.7        | 30.0        | 33.2        | *22.3       | *32.8       | -                 |
| Maryland-----                   | 11.6     | *0.1                        | 4.5         | 10.4        | 16.8        | 22.3        | 29.1        | 27.0        | 29.7        | *27.2             |
| District of Columbia-----       | 16.9     | -                           | *6.9        | 15.0        | 24.3        | 29.0        | 29.4        | *17.5       | *12.5       | *11.3             |
| Virginia-----                   | 14.6     | *0.3                        | 6.7         | 13.8        | 21.4        | 32.3        | 36.6        | 31.8        | 28.2        | *21.8             |
| West Virginia-----              | 12.0     | *0.1                        | 4.9         | 13.4        | 15.9        | 23.8        | 27.4        | 27.0        | 30.6        | *24.7             |
| North Carolina-----             | 11.4     | *0.2                        | 4.3         | 11.5        | 20.9        | 23.1        | 30.1        | 20.8        | 17.7        | *15.6             |
| South Carolina-----             | 9.7      | *0.1                        | 5.1         | 9.7         | 16.7        | 22.2        | 21.7        | 17.7        | *22.4       | *20.5             |
| Georgia-----                    | 11.9     | *0.3                        | 5.6         | 12.2        | 18.2        | 26.4        | 30.2        | 19.1        | 27.3        | 11.9              |
| Florida-----                    | 15.1     | *0.3                        | 6.6         | 14.8        | 23.5        | 29.6        | 29.9        | 20.4        | 29.4        | *26.4             |
| East South Central-----         | 10.5     | *0.2                        | 4.0         | 10.5        | 15.1        | 22.8        | 24.0        | 21.6        | 27.0        | 17.5              |
| Kentucky-----                   | 10.5     | *0.2                        | 3.7         | 11.0        | 14.4        | 22.7        | 24.5        | 22.7        | 29.0        | *18.5             |
| Tennessee-----                  | 10.5     | *0.3                        | 3.3         | 10.3        | 14.9        | 22.3        | 25.3        | 22.7        | 24.8        | *17.8             |
| Alabama-----                    | 11.1     | *0.2                        | 5.8         | 11.0        | 17.5        | 23.3        | 23.7        | 20.3        | 32.3        | *10.4             |
| Mississippi-----                | 9.4      | *0.3                        | 3.5         | 9.0         | 12.4        | 23.0        | 20.3        | 18.6        | *18.6       | *25.1             |
| West South Central-----         | 9.5      | *0.2                        | 5.0         | 8.9         | 13.9        | 18.8        | 22.2        | 20.8        | 20.5        | 22.7              |
| Arkansas-----                   | 8.8      | *0.6                        | 3.9         | 8.3         | 8.6         | 16.5        | 22.8        | 17.4        | 17.6        | *15.4             |
| Louisiana-----                  | 9.8      | *0.1                        | 5.6         | 8.6         | 14.9        | 21.5        | 24.1        | 20.1        | 24.7        | *14.7             |
| Oklahoma-----                   | 9.7      | *0.1                        | 3.7         | 9.8         | 15.3        | 18.8        | 18.0        | 20.0        | 18.8        | *17.5             |
| Texas-----                      | 9.4      | *0.2                        | 5.4         | 8.9         | 14.1        | 18.5        | 22.8        | 22.0        | 20.7        | 28.3              |
| Mountain-----                   | 13.3     | *0.4                        | 7.6         | 14.3        | 20.7        | 29.2        | 31.2        | 27.6        | 30.0        | 29.9              |
| Montana-----                    | 15.2     | *0.2                        | *6.9        | 13.3        | 22.3        | 30.7        | 37.4        | 30.8        | *32.1       | *51.5             |
| Idaho-----                      | 12.8     | -                           | *5.4        | 11.0        | 23.5        | 21.4        | 30.9        | 29.5        | 46.8        | *52.4             |
| Wyoming-----                    | 16.2     | *0.5                        | *8.5        | 17.2        | 27.3        | 31.9        | *17.3       | 63.4        | *33.7       | *25.7             |
| Colorado-----                   | 14.6     | *0.5                        | 7.1         | 14.7        | 22.4        | 33.4        | 31.8        | 29.4        | 28.8        | *23.3             |
| New Mexico-----                 | 10.2     | *0.8                        | 9.9         | 13.1        | 14.3        | 26.6        | 21.5        | 21.1        | *13.1       | *12.9             |
| Arizona-----                    | 12.3     | *0.1                        | 6.8         | 13.1        | 18.9        | 26.3        | 33.7        | 19.6        | *25.4       | *27.9             |
| Utah-----                       | 9.3      | *0.3                        | 7.7         | 13.3        | 14.9        | 23.6        | 19.5        | *14.6       | *21.5       | *20.8             |
| Nevada-----                     | 26.8     | -                           | *11.7       | 29.0        | 35.1        | 48.1        | 75.6        | *44.3       | *65.8       | *44.9             |
| Pacific-----                    | 15.5     | *0.5                        | 7.4         | 14.3        | 21.4        | 31.0        | 33.3        | 30.6        | 40.3        | 38.4              |
| Washington-----                 | 13.8     | *0.4                        | 6.2         | 11.9        | 18.6        | 27.4        | 31.4        | 27.2        | 36.9        | 44.8              |
| Oregon-----                     | 12.7     | *1.0                        | 5.1         | 13.8        | 17.5        | 21.4        | 25.1        | 25.7        | 35.5        | *26.8             |
| California-----                 | 16.2     | 0.4                         | 7.8         | 14.7        | 22.4        | 33.0        | 34.9        | 31.8        | 41.4        | 38.4              |
| Alaska-----                     | 16.4     | *1.0                        | *9.5        | *19.8       | 28.4        | *40.8       | *22.7       | *49.2       | *179.4      | *179.2            |
| Hawaii-----                     | 8.7      | *0.9                        | *8.5        | *9.9        | *12.5       | *18.0       | *14.3       | *32.7       | *35.5       |                   |

See note at end of table.

Table 5. Suicide rates, by age, color, and sex: United States, geographic division, and State, 1959-61  
(3-year average)—Con.

| Color, sex, and geographic area | All ages | 5-14 years | 15-24 years | 25-34 years | 35-44 years | 45-54 years | 55-64 years | 65-74 years | 75-84 years | 85 years and over |
|---------------------------------|----------|------------|-------------|-------------|-------------|-------------|-------------|-------------|-------------|-------------------|
| <u>White, male</u>              |          |            |             |             |             |             |             |             |             |                   |
| Rate per 100,000 population     |          |            |             |             |             |             |             |             |             |                   |
| United States-----              | 17.5     | 0.4        | 8.2         | 14.6        | 21.9        | 33.1        | 40.7        | 42.2        | 55.6        | 62.4              |
| New England-----                | 14.7     | *0.6       | 8.0         | 13.7        | 17.6        | 24.5        | 30.3        | 36.7        | 45.2        | 54.8              |
| Maine-----                      | 19.4     | *0.7       | *9.4        | 18.8        | 17.7        | 42.4        | 39.7        | 40.1        | 74.9        | *90.4             |
| New Hampshire-----              | 19.2     | -          | *10.0       | 19.9        | 24.2        | 25.8        | 39.3        | 45.8        | *71.7       | *138.6            |
| Vermont-----                    | 27.0     | *0.8       | *7.4        | *17.1       | 36.4        | 40.4        | 53.0        | 111.7       | *83.1       | *118.7            |
| Massachusetts-----              | 13.3     | *0.8       | 8.1         | 12.4        | 17.0        | 22.2        | 28.2        | 27.3        | 39.0        | *28.3             |
| Rhode Island-----               | 9.6      | -          | *4.4        | *12.0       | *8.8        | 16.0        | 17.8        | 32.1        | *20.4       | *73.7             |
| Connecticut-----                | 14.5     | *0.6       | 8.4         | 13.1        | 17.6        | 23.0        | 29.5        | 42.4        | 37.0        | *46.6             |
| Middle Atlantic-----            | 14.7     | 0.3        | 6.8         | 11.0        | 14.7        | 23.9        | 32.6        | 39.2        | 48.6        | 62.9              |
| New York-----                   | 14.4     | *0.2       | 7.1         | 11.0        | 13.4        | 23.2        | 30.6        | 37.8        | 46.3        | 72.1              |
| New Jersey-----                 | 12.8     | *0.3       | 5.2         | 9.0         | 12.9        | 20.3        | 34.6        | 32.2        | 44.5        | 78.2              |
| Pennsylvania-----               | 16.1     | *0.4       | 7.3         | 12.3        | 17.7        | 27.0        | 34.9        | 45.0        | 53.7        | 44.2              |
| East North Central-----         | 16.8     | 0.4        | 8.1         | 13.1        | 18.9        | 31.0        | 38.2        | 44.5        | 63.1        | 68.4              |
| Ohio-----                       | 17.2     | *0.6       | 7.1         | 13.7        | 22.1        | 30.2        | 38.0        | 49.1        | 64.8        | 76.0              |
| Indiana-----                    | 18.0     | *0.7       | 8.2         | 13.4        | 24.0        | 33.5        | 41.6        | 46.1        | 62.5        | 94.2              |
| Illinois-----                   | 15.4     | *0.3       | 7.5         | 11.7        | 14.5        | 25.8        | 33.8        | 43.3        | 61.2        | 55.6              |
| Michigan-----                   | 16.4     | *0.3       | 9.3         | 13.7        | 16.8        | 35.3        | 38.6        | 40.8        | 68.4        | 59.1              |
| Wisconsin-----                  | 18.1     | *0.1       | 9.0         | 13.6        | 20.0        | 35.8        | 45.1        | 42.5        | 56.5        | *61.3             |
| West North Central-----         | 18.1     | *0.4       | 7.7         | 12.8        | 20.9        | 34.9        | 44.4        | 42.8        | 51.8        | 60.3              |
| Minnesota-----                  | 15.7     | *0.4       | 8.2         | 13.6        | 18.3        | 30.1        | 37.1        | 39.0        | 45.9        | *53.8             |
| Iowa-----                       | 19.4     | *0.2       | 6.9         | 12.8        | 22.9        | 38.7        | 50.0        | 49.6        | 44.0        | *49.2             |
| Missouri-----                   | 20.3     | *0.6       | 8.1         | 13.5        | 23.6        | 35.8        | 47.6        | 45.8        | 61.3        | 66.7              |
| North Dakota-----               | 13.7     | *0.5       | *6.0        | *12.8       | *17.2       | 30.4        | 42.5        | *24.2       | *30.2       | -                 |
| South Dakota-----               | 14.5     | *0.5       | *5.4        | *9.7        | 21.0        | 29.7        | 43.5        | 30.1        | *17.0       | *75.0             |
| Nebraska-----                   | 18.1     | *0.5       | *6.8        | 12.6        | 18.5        | 36.7        | 42.6        | 44.0        | 55.4        | 70.6              |
| Kansas-----                     | 18.4     | -          | 9.1         | 11.7        | 19.8        | 37.8        | 43.9        | 41.9        | 66.5        | *76.7             |
| South Atlantic-----             | 20.3     | 0.3        | 8.1         | 18.2        | 31.0        | 42.6        | 50.9        | 41.0        | 52.9        | 48.9              |
| Delaware-----                   | 18.2     | *0.9       | *2.8        | *12.4       | 24.9        | 41.1        | 59.8        | *38.7       | *61.3       | -                 |
| Maryland-----                   | 17.8     | *0.3       | 7.0         | 13.7        | 24.2        | 34.0        | 48.0        | 50.3        | 63.9        | *70.7             |
| District of Columbia-----       | 24.2     | -          | *13.0       | *16.7       | *30.2       | 50.3        | 47.8        | *18.1       | *28.6       | -                 |
| Virginia-----                   | 23.2     | *0.3       | 9.9         | 20.9        | 33.1        | 51.5        | 62.8        | 58.9        | 59.8        | *57.8             |
| West Virginia-----              | 20.1     | *0.2       | 7.9         | 22.7        | 26.7        | 38.9        | 46.8        | 46.8        | 58.2        | *55.4             |
| North Carolina-----             | 19.0     | *0.4       | 6.1         | 18.5        | 34.6        | 38.8        | 53.9        | 40.7        | 38.4        | *40.6             |
| South Carolina-----             | 15.5     | *0.2       | 6.7         | 13.6        | 25.3        | 37.9        | 39.3        | 37.3        | *50.8       | *59.6             |
| Georgia-----                    | 19.4     | *0.6       | 8.1         | 17.2        | 30.1        | 44.5        | 50.6        | 38.4        | 61.1        | *32.5             |
| Florida-----                    | 23.0     | *0.3       | 9.9         | 20.3        | 36.6        | 45.8        | 48.0        | 32.8        | 49.3        | *50.2             |
| East South Central-----         | 17.5     | *0.4       | 6.3         | 16.7        | 24.2        | 38.7        | 42.6        | 39.7        | 53.8        | 37.9              |
| Kentucky-----                   | 17.8     | *0.2       | 6.3         | 18.0        | 22.6        | 39.6        | 44.1        | 40.9        | 56.6        | *34.3             |
| Tennessee-----                  | 17.3     | *0.4       | 5.1         | 15.5        | 24.1        | 38.2        | 43.0        | 41.5        | 49.7        | *38.6             |
| Alabama-----                    | 19.0     | *0.4       | 8.8         | 17.8        | 28.4        | 39.8        | 45.1        | 39.2        | 68.1        | *26.5             |
| Mississippi-----                | 15.0     | *0.5       | *4.8        | 14.4        | 19.5        | 36.0        | 34.5        | 33.3        | *33.4       | *61.3             |
| West South Central-----         | 15.2     | *0.4       | 7.2         | 12.8        | 21.3        | 30.7        | 37.5        | 38.5        | 41.7        | 53.6              |
| Arkansas-----                   | 13.9     | *0.9       | *5.1        | 11.1        | 13.1        | 26.8        | 38.2        | 30.6        | 32.5        | *34.4             |
| Louisiana-----                  | 15.7     | -          | 7.8         | 11.7        | 21.8        | 35.0        | 43.2        | 39.4        | 53.8        | *38.5             |
| Oklahoma-----                   | 15.9     | *0.2       | 4.8         | 14.4        | 23.8        | 31.5        | 30.8        | 38.7        | 40.8        | *35.7             |
| Texas-----                      | 15.1     | *0.5       | 8.1         | 13.0        | 21.8        | 30.1        | 37.9        | 40.2        | 41.7        | 70.1              |
| Mountain-----                   | 21.2     | *0.6       | 12.2        | 20.7        | 32.0        | 44.5        | 51.8        | 47.7        | 58.8        | 64.5              |
| Montana-----                    | 23.7     | *0.5       | *11.6       | 17.9        | 37.6        | 39.1        | 61.8        | 48.9        | *58.5       | *89.4             |
| Idaho-----                      | 20.3     | -          | *7.9        | *15.9       | 37.5        | 33.0        | 46.6        | 54.8        | 77.6        | *91.5             |
| Wyoming-----                    | 26.8     | -          | *15.6       | *24.5       | 42.8        | 50.3        | *30.1       | 112.5       | *67.7       | *54.9             |
| Colorado-----                   | 23.5     | *0.9       | 11.9        | 21.6        | 35.6        | 52.5        | 50.8        | 52.6        | 61.9        | *58.8             |
| New Mexico-----                 | 15.6     | *1.6       | 14.1        | 18.9        | 21.3        | 39.8        | 35.3        | *38.3       | *26.8       | *28.7             |
| Arizona-----                    | 18.9     | *0.3       | 11.2        | 20.4        | 26.0        | 41.5        | 56.8        | 26.8        | *47.2       | *65.6             |
| Utah-----                       | 15.4     | *0.6       | 14.0        | 17.4        | 24.0        | 41.0        | 34.7        | *25.2       | *44.6       | *50.6             |
| Nevada-----                     | 41.8     | -          | *15.3       | 43.1        | 51.7        | 62.5        | 127.5       | *79.7       | *129.8      | *93.4             |
| Pacific-----                    | 22.1     | 0.8        | 11.0        | 19.0        | 28.2        | 42.2        | 51.3        | 49.3        | 75.6        | 88.3              |
| Washington-----                 | 20.8     | *0.7       | 8.4         | 15.3        | 26.6        | 41.8        | 50.1        | 43.8        | 66.8        | 100.4             |
| Oregon-----                     | 20.5     | *1.7       | 9.0         | 22.0        | 29.2        | 31.0        | 39.1        | 43.5        | 70.9        | *65.2             |
| California-----                 | 22.7     | 0.6        | 11.7        | 19.3        | 28.4        | 43.7        | 53.5        | 51.2        | 77.7        | 88.5              |
| Alaska-----                     | 22.4     | *2.0       | *10.8       | *25.1       | *36.9       | *54.7       | *28.8       | *77.1       | *267.5      | *246.9            |
| Hawaii-----                     | 13.3     | *1.8       | *10.2       | *12.7       | *18.7       | *29.9       | *28.2       | *69.3       | *85.8       | -                 |

See note at end of table.



Table 5. Suicide rates, by age, color, and sex: United States, geographic division, and State, 1959-61  
(3-year average)—Con.

| Color, sex, and geographic area | All ages | 5-14 years | 15-24 years | 25-34 years | 35-44 years | 45-54 years | 55-64 years | 65-74 years | 75-84 years | 85 years and over |
|---------------------------------|----------|------------|-------------|-------------|-------------|-------------|-------------|-------------|-------------|-------------------|
| <u>White, female</u>            |          |            |             |             |             |             |             |             |             |                   |
| Rate per 100,000 population     |          |            |             |             |             |             |             |             |             |                   |
| United States-----              | 5.2      | 0.1        | 2.3         | 5.8         | 8.0         | 10.4        | 10.6        | 9.2         | 8.2         | 4.9               |
| New England-----                | 4.2      | -          | 1.5         | 5.0         | 5.3         | 7.8         | 8.5         | 7.6         | 7.1         | *2.9              |
| Maine-----                      | 5.3      | -          | *3.1        | *5.8        | *4.4        | 13.1        | *8.8        | *11.3       | *10.9       | *7.0              |
| New Hampshire-----              | 4.7      | -          | *1.7        | *4.6        | *7.5        | *5.6        | *15.5       | *7.2        | *5.8        | -                 |
| Vermont-----                    | 3.7      | -          | *1.2        | *3.0        | *2.8        | *10.8       | *9.1        | *4.5        | *8.4        | *16.1             |
| Massachusetts-----              | 3.7      | -          | *1.3        | 4.7         | 4.8         | 7.1         | 6.8         | 7.2         | *4.5        | *2.9              |
| Rhode Island-----               | 3.1      | -          | *1.3        | *3.9        | *1.6        | *6.3        | *7.7        | *7.1        | *4.5        | -                 |
| Connecticut-----                | 5.0      | -          | *1.4        | 6.0         | 7.5         | 7.9         | 10.8        | 7.7         | *13.3       | -                 |
| Middle Atlantic-----            | 5.1      | -          | 1.9         | 4.9         | 6.3         | 8.6         | 10.8        | 10.8        | 9.5         | 6.6               |
| New York-----                   | 5.5      | *0.1       | 2.1         | 5.0         | 6.4         | 8.2         | 11.9        | 12.1        | 11.8        | *8.4              |
| New Jersey-----                 | 4.7      | -          | *1.6        | 4.4         | 4.9         | 8.6         | 9.8         | 11.7        | 8.5         | *5.8              |
| Pennsylvania-----               | 4.7      | -          | 1.6         | 4.9         | 6.9         | 9.1         | 9.5         | 8.4         | 6.7         | *4.6              |
| East North Central-----         | 4.8      | *0.1       | 1.8         | 4.8         | 7.3         | 9.9         | 10.5        | 9.3         | 8.4         | *4.9              |
| Ohio-----                       | 5.0      | -          | 1.7         | 4.6         | 6.6         | 10.5        | 11.6        | 11.8        | 8.5         | *7.5              |
| Indiana-----                    | 5.0      | *0.2       | *1.8        | 6.2         | 9.1         | 9.0         | 9.2         | 7.7         | 12.0        | *4.2              |
| Illinois-----                   | 4.7      | -          | 1.8         | 4.4         | 7.6         | 8.3         | 9.3         | 8.6         | 9.2         | *4.4              |
| Michigan-----                   | 4.9      | *0.0       | 2.0         | 4.5         | 8.1         | 12.4        | 11.4        | 8.4         | *5.9        | *3.5              |
| Wisconsin-----                  | 4.3      | *0.2       | *1.8        | 4.9         | 4.6         | 9.3         | 10.8        | 9.0         | *5.4        | *2.5              |
| West North Central-----         | 4.4      | *0.1       | 1.7         | 5.1         | 5.8         | 8.8         | 9.2         | 8.1         | 7.6         | *5.3              |
| Minnesota-----                  | 3.3      | -          | *2.2        | 3.5         | 4.2         | 8.3         | 7.8         | *4.8        | *5.0        | *2.8              |
| Iowa-----                       | 4.3      | -          | *0.9        | 5.7         | 5.7         | 6.8         | 10.6        | 9.3         | *7.8        | *2.5              |
| Missouri-----                   | 5.4      | *0.2       | *2.3        | 5.6         | 7.5         | 9.4         | 11.0        | 9.7         | 8.2         | *9.1              |
| North Dakota-----               | 2.9      | -          | *1.5        | *5.7        | *3.8        | *4.1        | *4.1        | *11.0       | -           | *19.7             |
| South Dakota-----               | 3.0      | *0.5       | *2.3        | *1.8        | *3.5        | *6.9        | *10.5       | *4.4        | -           | -                 |
| Nebraska-----                   | 4.3      | -          | *0.4        | *3.7        | *5.2        | 10.0        | *7.5        | 12.3        | *10.2       | *5.5              |
| Kansas-----                     | 4.9      | -          | *1.7        | 7.5         | 6.8         | 11.9        | 7.9         | *5.6        | *11.6       | *3.5              |
| South Atlantic-----             | 5.5      | *0.1       | 2.7         | 6.9         | 8.9         | 11.0        | 11.7        | 7.4         | 6.5         | *3.0              |
| Delaware-----                   | 6.4      | -          | *1.3        | *7.4        | *10.6       | *19.0       | *8.5        | *8.7        | *12.5       | -                 |
| Maryland-----                   | 5.5      | -          | *2.0        | 7.2         | 9.6         | 10.3        | 11.3        | *8.5        | *7.9        | *4.6              |
| District of Columbia-----       | 10.7     | -          | *1.2        | *13.1       | *19.4       | *13.2       | *15.6       | *17.0       | *3.9        | *15.8             |
| Virginia-----                   | 6.0      | *0.2       | 3.1         | 6.7         | 9.9         | 13.3        | 12.7        | 9.8         | *5.9        | -                 |
| West Virginia-----              | 4.1      | -          | *2.1        | *5.1        | 5.9         | 9.2         | 8.7         | *8.1        | *5.2        | -                 |
| North Carolina-----             | 4.0      | -          | *2.3        | 4.8         | 7.6         | 8.2         | 9.1         | *4.4        | *2.5        | -                 |
| South Carolina-----             | 3.9      | -          | *3.1        | *5.9        | 8.3         | *7.1        | *6.3        | *2.6        | *3.9        | -                 |
| Georgia-----                    | 4.6      | -          | *3.0        | 7.2         | 6.5         | 8.7         | 12.3        | *4.1        | *4.6        | -                 |
| Florida-----                    | 7.5      | *0.3       | 3.3         | 9.5         | 11.0        | 14.7        | 14.7        | 8.3         | 10.6        | *8.2              |
| East South Central-----         | 3.7      | *0.1       | 1.7         | 4.7         | 6.4         | 7.4         | 6.8         | 6.0         | 5.6         | *3.6              |
| Kentucky-----                   | 3.3      | *0.2       | *0.8        | 4.4         | 6.4         | 6.3         | 6.0         | *6.2        | *6.1        | *7.1              |
| Tennessee-----                  | 4.0      | *0.1       | *1.5        | 5.5         | 6.2         | 7.1         | 9.3         | *6.9        | *5.4        | *3.7              |
| Alabama-----                    | 3.5      | -          | *2.7        | 4.5         | 7.1         | 7.2         | *4.2        | *4.5        | *4.4        | -                 |
| Mississippi-----                | 4.0      | -          | *2.2        | *3.8        | *5.8        | 10.3        | *7.1        | *5.8        | *7.0        | -                 |
| West South Central-----         | 3.8      | *0.1       | 2.8         | 5.1         | 6.7         | 7.2         | 7.7         | 5.4         | 3.9         | *1.6              |
| Arkansas-----                   | 3.7      | *0.2       | *2.7        | *5.7        | *4.5        | *6.6        | *8.3        | *4.5        | *4.2        | -                 |
| Louisiana-----                  | 4.1      | *0.1       | *3.6        | 5.6         | 8.1         | 8.3         | *6.2        | *4.4        | *3.7        | -                 |
| Oklahoma-----                   | 3.7      | -          | *2.5        | 5.4         | 7.1         | 6.8         | *6.1        | *3.9        | *0.9        | *3.8              |
| Texas-----                      | 3.8      | *0.0       | 2.7         | 4.8         | 6.6         | 7.1         | 8.5         | 6.3         | *5.0        | *1.5              |
| Mountain-----                   | 5.4      | *0.0       | 3.0         | 7.8         | 9.4         | 13.4        | 10.4        | 8.0         | *4.4        | *4.2              |
| Montana-----                    | 6.3      | -          | *2.3        | *8.7        | *6.5        | 21.5        | *11.0       | *11.4       | *3.7        | *19.1             |
| Idaho-----                      | 5.0      | -          | *2.9        | *6.1        | *9.6        | *8.7        | *14.0       | *3.6        | *15.7       | *19.3             |
| Wyoming-----                    | 5.1      | *1.0       | *1.5        | *9.5        | *11.2       | *11.8       | *2.8        | *8.2        | -           | -                 |
| Colorado-----                   | 5.8      | -          | *2.3        | 8.0         | 9.4         | 14.4        | 13.8        | *8.9        | *2.6        | -                 |
| New Mexico-----                 | 4.6      | -          | *5.7        | *7.1        | *7.2        | *13.1       | *7.6        | *4.0        | -           | -                 |
| Arizona-----                    | 5.6      | -          | *2.4        | *5.7        | 12.0        | 11.1        | *11.4       | *12.4       | *6.0        | -                 |
| Utah-----                       | 3.3      | -          | *1.9        | *9.1        | *5.8        | *5.7        | *4.5        | *4.9        | *3.5        | -                 |
| Nevada-----                     | 10.7     | -          | *8.0        | *14.6       | *18.1       | *31.6       | *7.2        | -           | -           | -                 |
| Pacific-----                    | 8.9      | *0.2       | 3.6         | 9.5         | 14.7        | 19.9        | 16.2        | 14.5        | 13.5        | *8.0              |
| Washington-----                 | 6.7      | *0.1       | 4.0         | 8.5         | 10.8        | 12.6        | 12.8        | 11.7        | *10.7       | *3.7              |
| Oregon-----                     | 4.9      | *0.4       | *1.5        | *5.9        | 6.3         | 11.6        | 11.0        | *8.7        | *4.7        | -                 |
| California-----                 | 9.9      | *0.1       | 3.7         | 10.0        | 16.4        | 22.4        | 17.5        | 15.9        | 15.3        | *9.9              |
| Alaska-----                     | *8.2     | -          | *6.8        | *12.4       | *17.1       | *20.9       | *12.3       | -           | -           | -                 |
| Hawaii-----                     | *3.0     | -          | *4.9        | *6.6        | *5.0        | *4.3        | -           | -           | -           | -                 |

See note at end of table.

Table 5. Suicide rates, by age, color, and sex: United States, geographic division, and State, 1959-61 (3-year average)—Con.

| Color, sex, and geographic area | All ages | 5-14 years | 15-24 years | 25-34 years | 35-44 years | 45-54 years | 55-64 years | 65-74 years | 75-84 years | 85 years and over |
|---------------------------------|----------|------------|-------------|-------------|-------------|-------------|-------------|-------------|-------------|-------------------|
| <u>Nonwhite, both sexes</u>     |          |            |             |             |             |             |             |             |             |                   |
| Rate per 100,000 population     |          |            |             |             |             |             |             |             |             |                   |
| United States-----              | 4.6      | *0.1       | 4.1         | 8.6         | 7.5         | 8.1         | 9.6         | 8.0         | 9.9         | *7.9              |
| New England-----                | 5.6      | -          | *1.7        | *11.9       | *7.4        | *8.9        | *19.2       | *3.4        | *17.2       | *38.2             |
| Maine-----                      | *22.3    | -          | -           | *26.5       | *64.0       | -           | *299.0      | -           | -           | -                 |
| New Hampshire-----              | -        | -          | -           | -           | -           | -           | -           | -           | -           | -                 |
| Vermont-----                    | *42.2    | -          | -           | -           | -           | *546.4      | -           | -           | -           | -                 |
| Massachusetts-----              | *4.8     | -          | *1.9        | *6.5        | *9.8        | *9.3        | *8.4        | -           | *29.3       | *68.9             |
| Rhode Island-----               | *9.6     | -          | *9.7        | *20.6       | -           | *22.9       | *56.7       | -           | -           | -                 |
| Connecticut-----                | *4.8     | -          | -           | *15.9       | *4.3        | *3.4        | *16.4       | *10.6       | -           | -                 |
| Middle Atlantic-----            | 5.3      | *0.2       | 4.6         | 9.6         | 8.5         | 7.2         | 8.9         | 9.7         | *5.7        | *14.5             |
| New York-----                   | 6.1      | *0.2       | 5.9         | 9.5         | 8.8         | 8.3         | 10.3        | 13.8        | *10.4       | *33.5             |
| New Jersey-----                 | 4.2      | *0.6       | *2.7        | 8.3         | *7.8        | *5.8        | *8.4        | *3.5        | *5.1        | -                 |
| Pennsylvania-----               | 4.7      | -          | *3.5        | 10.6        | 8.3         | *6.1        | *7.2        | *7.2        | -           | -                 |
| East North Central-----         | 4.4      | *0.1       | 3.2         | 8.7         | 7.9         | 7.6         | 8.4         | 6.2         | *4.7        | -                 |
| Ohio-----                       | 4.7      | *0.2       | *2.9        | 8.8         | 10.4        | *6.7        | *8.8        | *5.3        | *3.1        | -                 |
| Indiana-----                    | 5.1      | -          | *5.7        | *10.3       | *6.6        | *9.9        | *10.4       | *5.9        | *8.1        | -                 |
| Illinois-----                   | 4.1      | *0.1       | *2.6        | 7.1         | 8.1         | *6.0        | *8.1        | *8.6        | *5.1        | -                 |
| Michigan-----                   | 4.4      | -          | *3.3        | 11.1        | *5.6        | *8.3        | *8.3        | *4.2        | *4.8        | -                 |
| Wisconsin-----                  | *3.6     | -          | *2.5        | *4.3        | *6.1        | *24.7       | -           | -           | -           | -                 |
| West North Central-----         | 5.6      | -          | *6.8        | 8.7         | 10.3        | 11.2        | *6.1        | *14.2       | *2.5        | -                 |
| Minnesota-----                  | *4.7     | -          | *5.6        | *5.4        | *13.4       | *19.0       | -           | -           | -           | -                 |
| Iowa-----                       | *5.8     | -          | -           | *8.5        | *10.1       | *12.8       | -           | *44.2       | -           | -                 |
| Missouri-----                   | 5.6      | -          | *5.9        | *9.3        | *9.1        | *11.2       | *6.2        | *15.8       | *3.9        | -                 |
| North Dakota-----               | *10.3    | -          | -           | *43.6       | *29.7       | *39.1       | -           | -           | -           | -                 |
| South Dakota-----               | *10.9    | -          | *13.4       | *10.2       | *39.8       | *35.6       | *22.8       | -           | -           | -                 |
| Nebraska-----                   | *4.6     | -          | *12.7       | *6.1        | *8.1        | *11.0       | -           | -           | -           | -                 |
| Kansas-----                     | *4.0     | -          | *9.0        | *4.9        | *6.0        | -           | *8.6        | *11.7       | -           | -                 |
| South Atlantic-----             | 3.8      | *0.1       | 3.6         | 7.0         | 6.6         | 7.5         | 8.8         | 5.9         | *6.2        | -                 |
| Delaware-----                   | *7.5     | -          | *3.9        | *20.2       | *8.4        | *10.4       | *23.2       | -           | *33.6       | -                 |
| Maryland-----                   | 4.5      | -          | *3.1        | 11.1        | *6.2        | *9.6        | *5.8        | *10.5       | -           | -                 |
| District of Columbia-----       | 4.6      | *0.4       | *4.2        | *7.7        | *8.0        | *5.7        | *9.8        | *7.2        | *6.3        | -                 |
| Virginia-----                   | 5.2      | -          | 6.0         | 8.2         | 7.7         | 10.8        | *11.4       | *7.9        | *7.3        | -                 |
| West Virginia-----              | *4.4     | -          | -           | *4.2        | *20.8       | *6.5        | *3.4        | *10.3       | -           | -                 |
| North Carolina-----             | 4.0      | *0.1       | 5.2         | 7.3         | 7.0         | *8.7        | *6.8        | *10.6       | -           | -                 |
| South Carolina-----             | 2.4      | *0.1       | *1.4        | *4.3        | *6.6        | *5.8        | *7.4        | *1.0        | *2.9        | -                 |
| Georgia-----                    | 3.2      | -          | *3.6        | *4.5        | *4.9        | 8.0         | *8.8        | *3.2        | *5.2        | -                 |
| Florida-----                    | 3.3      | *0.3       | *1.8        | 6.9         | *5.0        | *5.3        | *8.9        | *8.3        | *5.8        | -                 |
| East South Central-----         | 3.2      | -          | 2.6         | 6.7         | 4.1         | 7.1         | 7.6         | 6.4         | *7.0        | *7.2              |
| Kentucky-----                   | 6.7      | -          | *3.5        | *18.7       | *5.3        | *11.4       | *18.6       | *4.5        | *11.1       | -                 |
| Tennessee-----                  | 3.5      | -          | *2.0        | *6.1        | *5.1        | *8.1        | *7.2        | *8.4        | *5.5        | -                 |
| Alabama-----                    | 2.8      | -          | *3.3        | *5.3        | *2.4        | *5.3        | *8.4        | *5.9        | *6.8        | *7.3              |
| Mississippi-----                | 2.6      | -          | *1.9        | *5.0        | *5.0        | *7.2        | *3.7        | *6.1        | *6.7        | *13.5             |
| West South Central-----         | 3.6      | *0.1       | 3.4         | 6.0         | 5.6         | 7.5         | 8.9         | 6.0         | *5.1        | -                 |
| Arkansas-----                   | 3.3      | -          | *3.1        | *4.0        | *4.7        | *8.8        | *6.2        | *8.9        | *6.4        | -                 |
| Louisiana-----                  | 2.7      | -          | *3.2        | *5.3        | *5.7        | 6.9         | *5.1        | *1.9        | *1.6        | -                 |
| Oklahoma-----                   | 4.5      | -          | *5.3        | *11.4       | *5.9        | *6.2        | *15.0       | *2.6        | -           | -                 |
| Texas-----                      | 4.2      | *0.2       | *3.3        | 6.1         | 5.8         | 7.8         | 11.7        | *8.9        | *9.0        | -                 |
| Mountain-----                   | 11.8     | -          | 18.8        | 33.4        | 20.5        | *13.3       | *13.5       | *6.3        | *15.7       | -                 |
| Montana-----                    | *6.9     | -          | *8.5        | *22.8       | *29.6       | -           | -           | -           | -           | -                 |
| Idaho-----                      | *17.0    | -          | *68.5       | *25.7       | -           | -           | -           | -           | *163.4      | -                 |
| Wyoming-----                    | *18.7    | -          | *30.9       | *70.6       | -           | -           | *85.5       | -           | -           | -                 |
| Colorado-----                   | *7.5     | -          | *4.3        | *22.1       | *9.4        | *7.9        | *22.5       | -           | -           | -                 |
| New Mexico-----                 | 12.0     | -          | *15.4       | *36.5       | *14.1       | *33.7       | *10.0       | *18.5       | -           | -                 |
| Arizona-----                    | 11.3     | -          | *18.8       | *35.8       | *25.9       | *6.6        | *14.6       | -           | -           | -                 |
| Utah-----                       | *21.8    | -          | *51.1       | *41.0       | *31.5       | -           | -           | *56.7       | *130.2      | -                 |
| Nevada-----                     | *18.3    | -          | *26.7       | *38.6       | *40.3       | *36.8       | -           | -           | -           | -                 |
| Pacific-----                    | 8.4      | *0.2       | 6.9         | 10.6        | 11.1        | 13.1        | 19.4        | 24.0        | 60.4        | *77.4             |
| Washington-----                 | 12.1     | -          | *4.7        | *15.0       | *23.7       | *18.3       | *17.6       | *62.2       | *98.3       | -                 |
| Oregon-----                     | *8.2     | -          | *6.6        | *6.5        | *13.4       | -           | *43.5       | *25.5       | *66.9       | -                 |
| California-----                 | 8.2      | *0.3       | 6.8         | 11.7        | 10.3        | 12.1        | 17.8        | 23.5        | 56.0        | *77.3             |
| Alaska-----                     | *9.7     | -          | *17.9       | *13.0       | *20.2       | *19.5       | *18.4       | *32.2       | -           | -                 |
| Hawaii-----                     | 7.8      | -          | *5.9        | *6.1        | *9.4        | 15.6        | *22.3       | *16.0       | *66.0       | *108.1            |

See note at end of table.

Table 5. Suicide rates, by age, color, and sex: United States, geographic division, and State, 1959-61  
(3-year average)—Con.

| Color, sex, and geographic area | All ages | 5-14 years | 15-24 years | 25-34 years | 35-44 years | 45-54 years | 55-64 years | 65-74 years | 75-84 years | 85 years and over |
|---------------------------------|----------|------------|-------------|-------------|-------------|-------------|-------------|-------------|-------------|-------------------|
| <u>Nonwhite, male</u>           |          |            |             |             |             |             |             |             |             |                   |
| Rate per 100,000 population     |          |            |             |             |             |             |             |             |             |                   |
| United States-----              | 7.5      | *0.1       | 6.5         | 14.4        | 12.1        | 13.6        | 15.8        | 13.6        | 17.6        | *12.8             |
| New England-----                | 8.8      | -          | *1.7        | *22.4       | *7.4        | *18.3       | *25.6       | *7.1        | *18.7       | *83.5             |
| Maine-----                      | *39.5    | -          | -           | *46.4       | *122.5      | -           | *565.0      | -           | -           | -                 |
| New Hampshire-----              | -        | -          | -           | -           | -           | -           | -           | -           | -           | -                 |
| Vermont-----                    | *79.0    | -          | -           | -           | -           | *980.4      | -           | -           | -           | -                 |
| Massachusetts-----              | *6.4     | -          | -           | *13.1       | *11.6       | *18.9       | -           | -           | *31.4       | *158.7            |
| Rhode Island-----               | *12.6    | -          | *17.3       | *20.4       | -           | *49.5       | *57.7       | -           | -           | -                 |
| Connecticut-----                | *8.6     | -          | -           | *32.0       | -           | *7.1        | *33.2       | *22.6       | -           | -                 |
| Middle Atlantic-----            | 8.4      | *0.2       | 7.1         | 16.1        | 13.0        | 11.9        | 14.1        | 17.1        | *10.9       | *12.6             |
| New York-----                   | 9.5      | *0.2       | 9.2         | 16.1        | 12.1        | 13.5        | 18.1        | *25.6       | *19.8       | *30.4             |
| New Jersey-----                 | 7.1      | *0.6       | *3.8        | *15.2       | *13.3       | *10.7       | *11.5       | *7.4        | *11.4       | -                 |
| Pennsylvania-----               | 7.3      | -          | *5.7        | 16.7        | 14.7        | *9.8        | *9.6        | *10.9       | -           | -                 |
| East North Central-----         | 7.0      | *0.2       | 4.9         | 14.2        | 12.5        | 10.7        | 13.8        | *11.4       | *10.1       | -                 |
| Ohio-----                       | 7.6      | *0.4       | *4.2        | 14.5        | 17.0        | *10.9       | *13.7       | *8.6        | *6.7        | -                 |
| Indiana-----                    | 9.3      | -          | *10.1       | *20.3       | *13.8       | *15.2       | *17.2       | *11.8       | *16.6       | -                 |
| Illinois-----                   | 6.2      | *0.3       | *3.1        | 11.8        | 12.6        | *6.5        | *13.4       | *16.2       | *11.2       | -                 |
| Michigan-----                   | 6.8      | -          | *6.5        | 15.9        | *7.5        | *12.9       | *14.4       | *8.4        | *10.5       | -                 |
| Wisconsin-----                  | *5.8     | -          | *5.4        | *8.9        | *12.0       | *28.3       | -           | -           | -           | -                 |
| West North Central-----         | 8.4      | -          | *10.0       | *14.4       | *13.2       | *17.7       | *8.3        | *24.7       | *5.2        | -                 |
| Minnesota-----                  | *6.2     | -          | *11.5       | -           | *12.7       | *35.2       | -           | -           | -           | -                 |
| Iowa-----                       | *9.4     | -          | -           | *17.8       | -           | *26.7       | -           | *87.6       | -           | -                 |
| Missouri-----                   | 7.9      | -          | *8.3        | *16.3       | *9.2        | *15.2       | *8.5        | *26.1       | *8.2        | -                 |
| North Dakota-----               | *20.3    | -          | -           | *87.8       | *60.8       | *74.7       | -           | -           | -           | -                 |
| South Dakota-----               | *21.7    | -          | *25.8       | *21.5       | *78.6       | *70.2       | *41.4       | -           | -           | -                 |
| Nebraska-----                   | *3.6     | -          | -           | -           | *16.5       | *22.3       | -           | -           | -           | -                 |
| Kansas-----                     | *7.3     | -          | *17.1       | *9.9        | *12.1       | -           | *8.9        | *23.4       | -           | -                 |
| South Atlantic-----             | 6.4      | *0.1       | 5.7         | 12.0        | 11.8        | 13.3        | 15.1        | 10.8        | *11.0       | -                 |
| Delaware-----                   | *11.8    | -          | *7.8        | *33.4       | *17.0       | -           | *44.8       | -           | *64.1       | -                 |
| Maryland-----                   | 6.5      | -          | *3.6        | *17.5       | *8.8        | *15.1       | *7.5        | *14.3       | -           | -                 |
| District of Columbia-----       | 7.5      | *0.8       | *5.2        | *11.9       | *14.8       | *11.7       | *12.6       | *10.7       | *15.3       | -                 |
| Virginia-----                   | 8.7      | -          | *9.2        | 13.6        | 13.7        | 17.3        | *19.9       | *16.4       | *15.5       | -                 |
| West Virginia-----              | *6.8     | -          | -           | *10.4       | *23.8       | *13.8       | *6.8        | *18.4       | -           | -                 |
| North Carolina-----             | 7.2      | -          | 8.6         | 13.0        | 13.3        | 14.5        | *17.6       | *11.5       | *18.9       | -                 |
| South Carolina-----             | 4.1      | *0.3       | *1.9        | *7.9        | *12.6       | *10.4       | *15.1       | *2.2        | -           | -                 |
| Georgia-----                    | 5.4      | -          | *6.2        | *8.8        | *8.5        | 14.6        | *14.5       | *4.6        | *12.4       | -                 |
| Florida-----                    | 5.5      | -          | *3.1        | *10.8       | *9.7        | *9.2        | *13.2       | *17.5       | *5.9        | -                 |
| East South Central-----         | 5.5      | -          | 4.4         | 10.7        | 6.4         | 13.3        | 14.3        | 12.1        | *13.5       | *16.3             |
| Kentucky-----                   | 11.6     | -          | *4.5        | *28.4       | *8.4        | *23.9       | *38.5       | *4.7        | *23.5       | -                 |
| Tennessee-----                  | 5.9      | -          | *3.4        | *9.3        | *6.8        | *15.0       | *13.6       | *17.6       | *11.5       | -                 |
| Alabama-----                    | 4.7      | -          | *5.5        | *9.2        | *2.3        | *9.9        | *15.9       | *10.2       | *11.2       | *18.0             |
| Mississippi-----                | 4.7      | -          | *3.8        | *7.7        | *10.5       | *12.9       | *5.5        | *12.6       | *13.8       | *29.0             |
| West South Central-----         | 6.1      | *0.1       | 4.9         | 11.6        | 10.4        | 12.8        | 16.1        | 10.2        | *9.4        | -                 |
| Arkansas-----                   | 4.8      | -          | *2.5        | *9.3        | *4.4        | *11.4       | *10.9       | *15.4       | *12.5       | -                 |
| Louisiana-----                  | 5.1      | -          | *5.3        | 10.5        | *11.0       | *14.1       | *10.8       | *2.8        | *3.5        | -                 |
| Oklahoma-----                   | 8.4      | -          | *8.6        | *25.3       | *13.1       | *10.0       | *31.5       | -           | -           | -                 |
| Texas-----                      | 7.0      | *0.2       | *4.8        | 10.8        | 10.9        | 12.8        | 19.3        | *16.1       | *15.8       | -                 |
| Mountain-----                   | 18.2     | -          | 30.1        | 53.6        | *29.3       | *20.3       | *14.3       | *11.4       | *27.6       | -                 |
| Montana-----                    | *8.1     | -          | *16.4       | *22.6       | *28.9       | -           | -           | -           | -           | -                 |
| Idaho-----                      | *26.0    | -          | *123.3      | -           | -           | -           | -           | -           | *254.5      | -                 |
| Wyoming-----                    | *18.2    | -          | -           | *73.7       | -           | -           | *154.3      | -           | -           | -                 |
| Colorado-----                   | *9.9     | -          | *8.2        | *44.2       | -           | *15.2       | -           | -           | -           | -                 |
| New Mexico-----                 | 21.4     | -          | *26.1       | *69.4       | *27.9       | *52.8       | *18.3       | *32.7       | -           | -                 |
| Arizona-----                    | 16.9     | -          | *25.2       | *57.5       | *46.6       | *6.3        | *17.5       | -           | -           | -                 |
| Utah-----                       | *38.2    | -          | *101.6      | *80.3       | *29.1       | -           | -           | *93.9       | *186.2      | -                 |
| Nevada-----                     | *26.7    | -          | *52.0       | *38.5       | *50.6       | *67.8       | -           | -           | -           | -                 |
| Pacific-----                    | 12.3     | *0.2       | 10.7        | 16.2        | 15.5        | 19.6        | 26.6        | 28.3        | 86.4        | *103.8            |
| Washington-----                 | 15.5     | -          | *4.3        | *30.3       | *31.5       | *23.8       | *9.8        | *37.0       | *114.3      | -                 |
| Oregon-----                     | *10.6    | -          | *13.0       | -           | *26.4       | -           | *75.4       | -           | -           | -                 |
| California-----                 | 12.2     | *0.3       | 10.8        | 16.7        | 14.8        | 18.8        | 24.4        | *30.9       | 89.5        | *133.3            |
| Alaska-----                     | *10.9    | -          | *19.0       | *16.1       | *12.5       | *17.2       | *31.5       | *56.6       | -           | -                 |
| Hawaii-----                     | 12.1     | -          | *10.6       | *11.8       | *13.1       | *22.6       | *31.5       | *20.5       | *85.6       | *88.5             |

See note at end of table.

Table 5. Suicide rates, by age, color, and sex: United States, geographic division, and State, 1959-61  
(3-year average)—Con.

| Color, sex, and geographic area | All ages | 5-14 years | 15-24 years | 25-34 years | 35-44 years | 45-54 years | 55-64 years | 65-74 years | 75-84 years | 85 years and over |
|---------------------------------|----------|------------|-------------|-------------|-------------|-------------|-------------|-------------|-------------|-------------------|
| <u>Nonwhite, female</u>         |          |            |             |             |             |             |             |             |             |                   |
| Rate per 100,000 population     |          |            |             |             |             |             |             |             |             |                   |
| United States-----              | 1.9      | *0.1       | 1.9         | 3.6         | 3.5         | 2.9         | 3.6         | 2.9         | *3.0        | *4.1              |
| New England-----                | *2.5     | -          | *1.7        | *1.5        | *7.4        | -           | *12.8       | -           | *16.0       | -                 |
| Maine-----                      | -        | -          | -           | -           | -           | -           | -           | -           | -           | -                 |
| New Hampshire-----              | -        | -          | -           | -           | -           | -           | -           | -           | -           | -                 |
| Vermont-----                    | -        | -          | -           | -           | -           | -           | -           | -           | -           | -                 |
| Massachusetts-----              | *3.2     | -          | *3.7        | -           | *7.9        | -           | *16.8       | -           | *27.4       | -                 |
| Rhode Island-----               | *6.5     | -          | -           | *20.8       | -           | -           | *55.8       | -           | -           | -                 |
| Connecticut-----                | *1.2     | -          | -           | -           | *8.5        | -           | -           | -           | -           | -                 |
| Middle Atlantic-----            | 2.6      | *0.2       | *2.5        | 4.2         | 4.5         | *3.0        | *4.0        | *3.0        | *1.7        | *15.8             |
| New York-----                   | 3.1      | *0.2       | *3.3        | *4.1        | 6.1         | *3.8        | *3.0        | *3.6        | *3.6        | *35.3             |
| New Jersey-----                 | *1.6     | *0.6       | *1.7        | *2.2        | *2.6        | *1.2        | *5.4        | -           | -           | -                 |
| Pennsylvania-----               | 2.2      | -          | *1.6        | *5.5        | *2.6        | *2.7        | *4.8        | *3.5        | -           | -                 |
| East North Central-----         | 2.0      | -          | *1.6        | 4.0         | 3.5         | 4.5         | *2.7        | *1.2        | -           | -                 |
| Ohio-----                       | 2.0      | -          | *1.8        | *3.7        | *4.2        | *2.5        | *3.6        | *2.1        | -           | -                 |
| Indiana-----                    | *1.2     | -          | *1.8        | *1.6        | -           | *4.9        | *3.5        | -           | -           | -                 |
| Illinois-----                   | 2.1      | -          | *2.2        | *3.1        | *4.0        | *5.6        | *2.7        | *1.6        | -           | -                 |
| Michigan-----                   | 2.1      | -          | *0.7        | *7.0        | *3.7        | *3.6        | *1.4        | -           | -           | -                 |
| Wisconsin-----                  | *1.4     | -          | -           | -           | -           | *20.7       | -           | -           | -           | -                 |
| West North Central-----         | 2.9      | -          | *3.7        | *3.7        | *7.6        | *5.2        | *4.0        | *4.0        | -           | -                 |
| Minnesota-----                  | *3.2     | -          | -           | *10.8       | *14.2       | -           | -           | -           | -           | -                 |
| Iowa-----                       | *2.3     | -          | -           | -           | *19.9       | -           | -           | -           | -           | -                 |
| Missouri-----                   | 3.5      | -          | *3.7        | *3.6        | *9.0        | *7.6        | *4.0        | *6.1        | -           | -                 |
| North Dakota-----               | -        | -          | -           | -           | -           | -           | -           | -           | -           | -                 |
| South Dakota-----               | -        | -          | -           | -           | -           | -           | -           | -           | -           | -                 |
| Nebraska-----                   | *5.5     | -          | *27.1       | *12.1       | -           | -           | -           | -           | -           | -                 |
| Kansas-----                     | *0.7     | -          | -           | -           | -           | -           | *8.3        | -           | -           | -                 |
| South Atlantic-----             | 1.4      | *0.1       | 1.6         | 2.7         | 2.0         | *2.0        | *3.2        | *1.8        | *2.1        | -                 |
| Delaware-----                   | *3.2     | -          | -           | *7.8        | -           | *21.1       | -           | -           | -           | -                 |
| Maryland-----                   | 2.5      | -          | *2.6        | *5.3        | *3.7        | *3.9        | *3.9        | *6.8        | -           | -                 |
| District of Columbia-----       | *2.0     | -          | *3.3        | *3.9        | *2.0        | -           | *7.1        | *4.3        | -           | -                 |
| Virginia-----                   | 1.7      | -          | *2.7        | *3.2        | *1.9        | *4.2        | *3.5        | -           | -           | -                 |
| West Virginia-----              | *2.2     | -          | -           | -           | *18.5       | -           | -           | -           | -           | -                 |
| North Carolina-----             | *1.0     | *0.2       | *1.8        | *2.4        | *1.5        | -           | *0.9        | *2.8        | *3.9        | -                 |
| South Carolina-----             | *0.8     | -          | *1.0        | *1.4        | *1.4        | *1.8        | *1.3        | -           | *5.2        | -                 |
| Georgia-----                    | 1.1      | -          | *1.1        | *1.0        | *2.0        | *2.3        | *4.2        | *2.2        | -           | -                 |
| Florida-----                    | *1.3     | *0.7       | *0.5        | *3.2        | *0.6        | *1.5        | *4.7        | -           | *5.7        | -                 |
| East South Central-----         | 1.1      | -          | *0.8        | *3.5        | *2.2        | *1.7        | *1.6        | *1.3        | *1.1        | -                 |
| Kentucky-----                   | *2.1     | -          | *2.3        | *10.0       | *2.5        | -           | -           | *4.4        | -           | -                 |
| Tennessee-----                  | *1.3     | -          | *0.8        | *3.7        | *3.7        | *2.0        | *1.4        | -           | -           | -                 |
| Alabama-----                    | *1.2     | -          | *1.3        | *2.4        | *2.4        | *1.3        | *1.8        | *2.4        | *3.1        | -                 |
| Mississippi-----                | *0.7     | -          | -           | *2.9        | *0.7        | *2.3        | *2.0        | -           | -           | -                 |
| West South Central-----         | 1.2      | *0.1       | *1.9        | *1.3        | *1.6        | *2.7        | *2.1        | *2.1        | *1.1        | -                 |
| Arkansas-----                   | *2.0     | -          | *3.6        | -           | *5.0        | *6.5        | *2.0        | *2.5        | -           | -                 |
| Louisiana-----                  | *0.6     | -          | *1.2        | *1.1        | *1.2        | *0.7        | -           | *1.2        | -           | -                 |
| Oklahoma-----                   | *0.9     | -          | *2.1        | -           | -           | *2.9        | -           | *5.1        | -           | -                 |
| Texas-----                      | 1.6      | *0.2       | *1.9        | *2.0        | *1.4        | *3.2        | *4.4        | *2.1        | *2.9        | -                 |
| Mountain-----                   | 5.3      | -          | *7.4        | *13.9       | *11.4       | *5.6        | *12.6       | -           | -           | -                 |
| Montana-----                    | *5.7     | -          | -           | *23.0       | *30.4       | -           | -           | -           | -           | -                 |
| Idaho-----                      | *7.1     | -          | -           | *52.3       | -           | -           | -           | -           | -           | -                 |
| Wyoming-----                    | *19.2    | -          | *68.0       | *67.8       | -           | -           | -           | -           | -           | -                 |
| Colorado-----                   | *5.1     | -          | -           | -           | *18.8       | -           | *42.8       | -           | -           | -                 |
| New Mexico-----                 | *2.6     | -          | *5.1        | *6.4        | -           | *13.7       | -           | -           | -           | -                 |
| Arizona-----                    | *5.6     | -          | *12.4       | *15.5       | *5.2        | *7.0        | *11.0       | -           | -           | -                 |
| Utah-----                       | *4.1     | -          | -           | -           | *34.3       | -           | -           | -           | -           | -                 |
| Nevada-----                     | *9.4     | -          | -           | *38.6       | *28.7       | -           | -           | -           | -           | -                 |
| Pacific-----                    | 4.2      | *0.2       | *2.9        | 5.4         | 6.5         | *4.6        | *9.9        | *19.0       | *27.0       | *48.5             |
| Washington-----                 | *8.4     | -          | *5.2        | -           | *15.0       | *9.5        | *29.4       | *94.3       | *69.2       | -                 |
| Oregon-----                     | *5.6     | -          | -           | *12.8       | -           | -           | -           | *58.7       | *178.3      | -                 |
| California-----                 | 4.0      | *0.3       | *2.8        | 6.8         | *5.8        | *4.1        | *9.6        | *15.6       | *15.5       | *24.9             |
| Alaska-----                     | *8.3     | -          | *16.5       | *9.4        | *29.2       | *22.4       | -           | -           | -           | -                 |
| Hawaii-----                     | *3.1     | -          | *1.1        | *1.1        | *5.6        | *4.1        | *8.7        | *10.4       | *39.1       | *138.9            |

NOTE: Deaths of children under 8 years of age are not tabulated as due to suicide, regardless of the information entered on the death certificate.

Table 6. Suicide rates, by color, sex, marital status, and age: United States, 1959-61 (3-year average)

| Marital status and age           | Total      |      |        | White      |      |        | Nonwhite   |       |        |
|----------------------------------|------------|------|--------|------------|------|--------|------------|-------|--------|
|                                  | Both sexes | Male | Female | Both sexes | Male | Female | Both sexes | Male  | Female |
| Rate per 100,000 population      |            |      |        |            |      |        |            |       |        |
| <u>All marital status groups</u> |            |      |        |            |      |        |            |       |        |
| 15+ years-----                   | 15.2       | 24.1 | 6.9    | 16.1       | 25.4 | 7.4    | 7.4        | 12.2  | 3.0    |
| 15-19 years-----                 | 3.5        | 5.3  | 1.6    | 3.6        | 5.6  | 1.6    | 2.4        | 3.4   | 1.5    |
| 20-24 years-----                 | 7.0        | 11.2 | 3.0    | 7.1        | 11.4 | 3.1    | 6.2        | 10.4  | 2.5    |
| 25-29 years-----                 | 9.1        | 13.4 | 4.9    | 9.1        | 13.2 | 5.1    | 8.8        | 15.0  | 3.4    |
| 30-34 years-----                 | 10.8       | 15.7 | 6.2    | 11.1       | 16.0 | 6.5    | 8.4        | 13.9  | 3.7    |
| 35-39 years-----                 | 12.8       | 18.9 | 7.1    | 13.4       | 19.6 | 7.6    | 7.9        | 13.0  | 3.3    |
| 40-44 years-----                 | 15.4       | 23.2 | 7.9    | 16.3       | 24.5 | 8.4    | 7.2        | 11.2  | 3.6    |
| 45-49 years-----                 | 18.5       | 28.2 | 9.1    | 19.7       | 29.9 | 9.8    | 7.8        | 13.1  | 2.8    |
| 50-54 years-----                 | 22.0       | 34.4 | 10.1   | 23.5       | 36.4 | 10.9   | 8.5        | 14.3  | 3.0    |
| 55-59 years-----                 | 23.4       | 37.7 | 9.8    | 24.9       | 40.1 | 10.5   | 9.0        | 15.0  | 3.1    |
| 60-64 years-----                 | 23.8       | 38.9 | 10.0   | 25.0       | 41.0 | 10.6   | 9.9        | 16.4  | 3.9    |
| 65-69 years-----                 | 22.7       | 38.3 | 9.0    | 23.9       | 40.4 | 9.5    | 9.1        | 15.6  | 3.3    |
| 70-74 years-----                 | 24.7       | 43.7 | 8.6    | 26.2       | 46.5 | 9.1    | 6.4        | 10.8  | *2.4   |
| 75-79 years-----                 | 27.3       | 51.2 | 8.3    | 28.7       | 54.1 | 8.8    | 9.0        | 16.8  | *2.0   |
| 80-84 years-----                 | 30.4       | 62.0 | 7.6    | 31.6       | 65.1 | 7.8    | 12.0       | 20.5  | *5.0   |
| 85+ years-----                   | 27.6       | 63.1 | 5.2    | 29.2       | 67.7 | 5.3    | *8.5       | *13.9 | *4.4   |
| Age-adjusted, 15+ years--        | 14.0       | 22.1 | 6.5    | 14.7       | 23.1 | 6.9    | 7.4        | 12.2  | 3.0    |
| <u>Single</u>                    |            |      |        |            |      |        |            |       |        |
| 15+ years-----                   | 12.1       | 18.2 | 4.4    | 12.8       | 19.2 | 4.7    | 7.1        | 10.8  | 2.2    |
| 15-19 years-----                 | 3.4        | 5.2  | 1.4    | 3.6        | 5.4  | 1.3    | 2.4        | 3.3   | 1.4    |
| 20-24 years-----                 | 9.5        | 12.8 | 3.6    | 9.8        | 13.1 | 3.8    | 7.6        | 11.0  | *2.6   |
| 25-29 years-----                 | 18.2       | 23.3 | 8.3    | 18.9       | 23.9 | 8.9    | 14.5       | 20.2  | *5.8   |
| 30-34 years-----                 | 22.4       | 29.8 | 10.3   | 23.9       | 31.3 | 11.5   | 14.8       | 21.7  | *4.3   |
| 35-39 years-----                 | 24.1       | 34.2 | 10.2   | 25.5       | 35.9 | 11.3   | 15.8       | 24.3  | *3.1   |
| 40-44 years-----                 | 23.7       | 35.6 | 9.9    | 25.6       | 38.6 | 10.8   | 10.0       | 15.5  | *2.5   |
| 45-49 years-----                 | 25.5       | 40.6 | 9.5    | 27.3       | 43.8 | 10.2   | 10.5       | 16.6  | *2.0   |
| 50-54 years-----                 | 28.9       | 48.4 | 9.9    | 30.7       | 52.4 | 10.5   | 11.4       | 17.6  | *2.3   |
| 55-59 years-----                 | 29.6       | 51.3 | 8.9    | 31.6       | 55.9 | 9.6    | 11.9       | 19.2  | *1.1   |
| 60-64 years-----                 | 30.7       | 54.4 | 9.1    | 31.9       | 57.4 | 9.6    | *14.4      | *23.6 | -      |
| 65-69 years-----                 | 31.4       | 58.4 | 8.3    | 32.6       | 61.6 | 8.7    | *12.5      | *21.0 | -      |
| 70-74 years-----                 | 36.2       | 70.3 | 9.4    | 37.7       | 74.2 | 9.8    | *7.1       | *12.5 | -      |
| 75-79 years-----                 | 36.8       | 81.2 | 5.0    | 37.7       | 84.5 | 5.2    | *17.5      | *31.1 | -      |
| 80-84 years-----                 | 35.0       | 87.4 | *5.5   | 35.6       | 90.2 | *5.7   | *20.2      | *38.7 | -      |
| 85+ years-----                   | 25.4       | 71.5 | *3.9   | 25.2       | 72.6 | *4.1   | *29.5      | *57.4 | -      |
| Age-adjusted, 15+ years--        | 20.9       | 33.2 | 7.7    | 22.1       | 35.2 | 8.2    | 11.1       | 17.0  | 2.5    |
| <u>Married</u>                   |            |      |        |            |      |        |            |       |        |
| 15+ years-----                   | 13.6       | 21.1 | 6.2    | 14.4       | 22.2 | 6.5    | 6.6        | 10.8  | 2.6    |
| 15-19 years-----                 | 3.4        | 7.9  | 2.4    | 3.6        | 8.3  | 2.4    | *2.3       | *4.5  | *1.8   |
| 20-24 years-----                 | 4.8        | 8.4  | 2.5    | 4.8        | 8.4  | 2.5    | 4.6        | 8.7   | 2.1    |
| 25-29 years-----                 | 6.6        | 9.6  | 4.0    | 6.5        | 9.3  | 4.1    | 6.8        | 12.0  | 2.7    |
| 30-34 years-----                 | 8.4        | 12.0 | 5.0    | 8.5        | 12.0 | 5.3    | 6.8        | 11.1  | 3.3    |
| 35-39 years-----                 | 10.5       | 15.1 | 6.1    | 10.9       | 15.6 | 6.4    | 6.3        | 10.1  | 2.8    |
| 40-44 years-----                 | 13.0       | 19.2 | 6.8    | 13.8       | 20.3 | 7.3    | 5.5        | 8.4   | 2.8    |
| 45-49 years-----                 | 16.0       | 23.7 | 8.0    | 17.0       | 25.1 | 8.6    | 6.7        | 10.7  | 2.5    |
| 50-54 years-----                 | 19.3       | 28.9 | 8.8    | 20.4       | 30.5 | 9.4    | 7.6        | 12.2  | 2.4    |
| 55-59 years-----                 | 20.7       | 31.4 | 8.3    | 21.8       | 33.3 | 8.8    | 8.3        | 13.0  | 2.6    |
| 60-64 years-----                 | 20.9       | 31.4 | 8.2    | 21.9       | 32.9 | 8.6    | 8.5        | 12.6  | *2.9   |
| 65-69 years-----                 | 20.7       | 30.6 | 7.5    | 21.8       | 32.1 | 8.0    | 7.8        | 12.1  | *1.2   |
| 70-74 years-----                 | 21.6       | 31.6 | 5.8    | 22.8       | 33.5 | 6.1    | 5.4        | 7.7   | *1.1   |
| 75-79 years-----                 | 24.9       | 35.2 | 5.7    | 26.1       | 37.1 | 6.0    | 8.9        | 12.1  | *1.3   |
| 80-84 years-----                 | 32.4       | 43.8 | 5.1    | 34.0       | 46.1 | 5.4    | *9.5       | *12.7 | -      |
| 85+ years-----                   | 30.1       | 39.3 | *3.1   | 33.0       | 43.1 | *3.3   | *2.1       | *2.7  | -      |
| Age-adjusted, 15+ years--        | 11.9       | 18.0 | 5.5    | 12.4       | 18.7 | 5.8    | 6.1        | 9.9   | 2.4    |

Table 6. Suicide rates, by color, sex, marital status, and age: United States, 1959-61  
(3-year average)—Con.

| Marital status and age      | Total      |        |        | White      |        |        | Nonwhite   |       |        |
|-----------------------------|------------|--------|--------|------------|--------|--------|------------|-------|--------|
|                             | Both sexes | Male   | Female | Both sexes | Male   | Female | Both sexes | Male  | Female |
| Rate per 100,000 population |            |        |        |            |        |        |            |       |        |
| <u>Widowed</u>              |            |        |        |            |        |        |            |       |        |
| 15+ years-----              | 24.3       | 74.4   | 11.1   | 26.4       | 82.4   | 12.0   | 9.3        | 24.1  | 4.8    |
| 15-19 years-----            | *5.1       | *18.7  | -      | *6.9       | *26.0  | -      | -          | -     | -      |
| 20-24 years-----            | 36.3       | *125.5 | *11.6  | *40.3      | *142.3 | *10.9  | *26.3      | *79.0 | *13.2  |
| 25-29 years-----            | 27.2       | 94.3   | *9.9   | 29.6       | 95.7   | *10.8  | *22.2      | *90.3 | *8.0   |
| 30-34 years-----            | 25.2       | 75.4   | 13.5   | 30.9       | 83.7   | 17.9   | *12.8      | *54.4 | *4.2   |
| 35-39 years-----            | 26.4       | 95.1   | 11.8   | 31.3       | 121.0  | 12.8   | *13.2      | *31.3 | *9.0   |
| 40-44 years-----            | 22.9       | 78.0   | 11.9   | 26.0       | 92.8   | 13.4   | 12.9       | *38.8 | *6.8   |
| 45-49 years-----            | 24.8       | 75.2   | 14.8   | 29.4       | 91.6   | 17.7   | 7.6        | *24.2 | *3.6   |
| 50-54 years-----            | 25.7       | 82.5   | 14.5   | 29.5       | 100.8  | 16.3   | 8.5        | *19.2 | *5.7   |
| 55-59 years-----            | 24.5       | 75.1   | 14.2   | 27.5       | 88.1   | 16.0   | 8.5        | 25.1  | *3.9   |
| 60-64 years-----            | 23.5       | 73.0   | 13.0   | 25.7       | 82.5   | 14.1   | 8.9        | 22.8  | *4.9   |
| 65-69 years-----            | 20.9       | 65.1   | 10.4   | 22.4       | 72.3   | 11.0   | 9.4        | 22.0  | 5.6    |
| 70-74 years-----            | 23.9       | 72.2   | 10.3   | 25.6       | 78.7   | 10.9   | 7.1        | 18.2  | *3.3   |
| 75-79 years-----            | 25.2       | 74.7   | 9.3    | 26.9       | 80.3   | 9.9    | 7.4        | *20.1 | *2.5   |
| 80-84 years-----            | 27.2       | 79.3   | 8.2    | 28.4       | 83.4   | 8.3    | 11.8       | *25.7 | *6.3   |
| 85+ years-----              | 26.2       | 77.1   | 5.5    | 27.7       | 82.3   | 5.5    | *9.2       | *18.6 | *5.1   |
| Age-adjusted, 15+ years--   | 23.8       | 78.4   | 10.7   | 27.2       | 90.6   | 12.0   | 12.3       | 39.5  | 6.0    |
| <u>Divorced</u>             |            |        |        |            |        |        |            |       |        |
| 15+ years-----              | 48.0       | 88.0   | 20.0   | 53.1       | 96.2   | 22.3   | 12.9       | 25.5  | 5.2    |
| 15-19 years-----            | *11.2      | *6.1   | *12.5  | *12.3      | *6.8   | *13.8  | -          | -     | -      |
| 20-24 years-----            | 17.9       | 32.6   | 10.2   | 19.1       | 34.1   | 10.8   | *8.2       | *15.7 | *5.6   |
| 25-29 years-----            | 30.5       | 47.4   | 19.4   | 33.9       | 50.2   | 22.6   | *10.3      | *25.4 | *4.0   |
| 30-34 years-----            | 42.0       | 69.9   | 23.4   | 47.9       | 77.6   | 27.1   | *12.0      | *22.5 | *6.6   |
| 35-39 years-----            | 44.4       | 77.9   | 22.9   | 50.7       | 87.9   | 26.4   | 11.4       | *21.1 | *6.0   |
| 40-44 years-----            | 50.5       | 94.2   | 22.3   | 56.2       | 104.4  | 24.5   | 17.0       | *28.8 | *10.1  |
| 45-49 years-----            | 51.4       | 97.7   | 20.0   | 56.9       | 107.0  | 22.5   | 15.6       | 34.1  | *4.1   |
| 50-54 years-----            | 54.8       | 101.6  | 21.1   | 60.3       | 111.0  | 23.8   | *12.8      | *29.2 | *1.4   |
| 55-59 years-----            | 55.4       | 106.6  | 16.3   | 61.3       | 118.0  | 18.0   | *7.1       | *13.9 | *1.8   |
| 60-64 years-----            | 61.2       | 111.3  | 20.7   | 64.9       | 118.8  | 21.7   | *22.3      | *36.3 | *9.7   |
| 65-69 years-----            | 50.8       | 86.7   | 19.5   | 54.1       | 92.5   | 21.2   | *14.3      | *28.4 | -      |
| 70-74 years-----            | 56.3       | 100.8  | 13.4   | 60.5       | 108.6  | 14.4   | *4.4       | *8.4  | -      |
| 75-79 years-----            | 73.7       | 118.4  | *25.0  | 78.0       | 125.9  | *26.7  | *17.7      | *30.7 | -      |
| 80-84 years-----            | 65.8       | 109.4  | *19.8  | 69.4       | 116.6  | *21.1  | *21.5      | *35.4 | -      |
| 85+ years-----              | *55.3      | *93.4  | *15.1  | *60.4      | *101.8 | *16.6  | -          | -     | -      |
| Age-adjusted, 15+ years--   | 39.9       | 69.4   | 18.4   | 44.0       | 75.7   | 20.6   | 10.8       | 21.3  | 4.3    |

Table 7. Suicide rates and rank order for specified standard metropolitan statistical areas: United States, 1960

| Standard metropolitan statistical area       | Suicide rate per 100,000 population |
|--|-------------------------------------|
| Tampa-St. Petersburg, Fla-----               | 17.3                                |
| San Francisco-Oakland, Calif-----            | 17.2                                |
| Los Angeles-Long Beach, Calif-----           | 17.1                                |
| Seattle, Wash-----                           | 16.7                                |
| Sacramento, Calif-----                       | 16.5                                |
| Miami, Fla-----                              | 15.8                                |
| San Bernardino-Riverside-Ontario, Calif----- | 14.2                                |
| Indianapolis, Ind-----                       | 14.0                                |
| San Jose, Calif-----                         | 14.0                                |
| Denver, Colo-----                            | 13.6                                |
| San Diego, Calif-----                        | 13.3                                |
| Portland, Oreg.-Wash-----                    | 12.9                                |
| Phoenix, Ariz-----                           | 13.1                                |
| Worcester, Mass-----                         | 12.2                                |
| Oklahoma City, Okla-----                     | 11.9                                |
| Norfolk-Portsmouth, Va-----                  | 11.1                                |
| Cleveland, Ohio-----                         | 10.8                                |
| Youngstown-Warren, Ohio-----                 | 10.6                                |
| Gary-Hammond-East Chicago, Ind-----          | 10.5                                |
| Kansas City, Mo.-Kans-----                   | 10.4                                |
| Fort Worth, Tex-----                         | 10.3                                |
| Columbus, Ohio-----                          | 10.2                                |
| Rochester, N.Y-----                          | 10.2                                |
| Milwaukee, Wis-----                          | 10.1                                |
| Atlanta, Ga-----                             | 10.1                                |
| Louisville, Ky.-Ind-----                     | 10.1                                |
| Cincinnati, Ohio-Ky-----                     | 9.9                                 |
| Hartford-New Britain-Bristol, Conn-----      | 9.7                                 |
| Bridgeport-Stamford-Norwalk, Conn-----       | 9.6                                 |
| Detroit, Mich-----                           | 9.5                                 |
| Houston, Tex-----                            | 9.5                                 |
| San Antonio, Tex-----                        | 9.5                                 |
| New York, N.Y-----                           | 9.4                                 |
| Baltimore, Md-----                           | 9.4                                 |
| Washington, D.C.-Md.-Va-----                 | 9.2                                 |
| Jersey City, N.J-----                        | 9.2                                 |
| New Haven-Waterbury, Conn-----               | 9.1                                 |
| Dayton, Ohio-----                            | 9.1                                 |
| St. Louis, Mo.-Ill-----                      | 9.0                                 |
| Philadelphia, Pa.-N.J-----                   | 9.0                                 |
| Springfield-Holyoke, Mass-----               | 9.0                                 |
| Minneapolis-St. Paul, Minn-----              | 8.6                                 |
| Chicago, Ill-----                            | 8.5                                 |
| Akron, Ohio-----                             | 8.4                                 |
| Pittsburgh, Pa-----                          | 8.3                                 |
| Birmingham, Ala-----                         | 8.2                                 |
| Syracuse, N.Y-----                           | 8.2                                 |
| Dallas, Tex-----                             | 7.9                                 |
| Memphis, Tenn-----                           | 7.8                                 |
| Buffalo, N.Y-----                            | 7.6                                 |
| Paterson-Clifton-Passaic, N.J-----           | 7.5                                 |
| New Orleans, La-----                         | 7.4                                 |
| Boston-Lowell-Lawrence, Mass-----            | 7.2                                 |
| Albany-Schenectady-Troy, N.Y-----            | 7.0                                 |
| Honolulu, Hawaii-----                        | 7.0                                 |
| Newark, N.J-----                             | 6.9                                 |
| Providence, R.I-----                         | 6.7                                 |

<sup>1</sup>Includes only areas with population of 500,000 or over.

## VITAL AND HEALTH STATISTICS PUBLICATIONS SERIES

Formerly Public Health Service Publication No. 1000

- Series 1. Programs and Collection Procedures.*—Reports which describe the general programs of the National Center for Health Statistics and its offices and divisions, data collection methods used, definitions, and other material necessary for understanding the data.
- Series 2. Data Evaluation and Methods Research.*—Studies of new statistical methodology including experimental tests of new survey methods, studies of vital statistics collection methods, new analytical techniques, objective evaluations of reliability of collected data, contributions to statistical theory.
- Series 3. Analytical Studies.*—Reports presenting analytical or interpretive studies based on vital and health statistics, carrying the analysis further than the expository types of reports in the other series.
- Series 4. Documents and Committee Reports.*—Final reports of major committees concerned with vital and health statistics, and documents such as recommended model vital registration laws and revised birth and death certificates.
- Series 10. Data from the Health Interview Survey.*—Statistics on illness; accidental injuries; disability; use of hospital, medical, dental, and other services; and other health-related topics, based on data collected in a continuing national household interview survey.
- Series 11. Data from the Health Examination Survey.*—Data from direct examination, testing, and measurement of national samples of the civilian, noninstitutionalized population provide the basis for two types of reports: (1) estimates of the medically defined prevalence of specific diseases in the United States and the distributions of the population with respect to physical, physiological, and psychological characteristics; and (2) analysis of relationships among the various measurements without reference to an explicit finite universe of persons.
- Series 12. Data from the Institutionalized Population Surveys.*—Discontinued effective 1975. Future reports from these surveys will be in Series 13.
- Series 13. Data on Health Resources Utilization.*—Statistics on the utilization of health manpower and facilities providing long-term care, ambulatory care, hospital care, and family planning services.
- Series 14. Data on Health Resources: Manpower and Facilities.*—Statistics on the numbers, geographic distribution, and characteristics of health resources including physicians, dentists, nurses, other health occupations, hospitals, nursing homes, and outpatient facilities.
- Series 20. Data on Mortality.*—Various statistics on mortality other than as included in regular annual or monthly reports. Special analyses by cause of death, age, and other demographic variables; geographic and time series analyses; and statistics on characteristics of deaths not available from the vital records, based on sample surveys of those records.
- Series 21. Data on Natality, Marriage, and Divorce.*—Various statistics on natality, marriage, and divorce other than as included in regular annual or monthly reports. Special analyses by demographic variables; geographic and time series analyses; studies of fertility; and statistics on characteristics of births not available from the vital records, based on sample surveys of those records.
- Series 22. Data from the National Mortality and Natality Surveys.*—Discontinued effective 1975. Future reports from these sample surveys based on vital records will be included in Series 20 and 21, respectively.
- Series 23. Data from the National Survey of Family Growth.*—Statistics on fertility, family formation and dissolution, family planning, and related maternal and infant health topics derived from a biennial survey of a nationwide probability sample of ever-married women 15-44 years of age.

For a list of titles of reports published in these series, write to: Scientific and Technical Information Branch  
National Center for Health Statistics  
Public Health Service, HRA  
Rockville, Md. 20852



**DHEW Publication No. (HRA) 76-1259**  
**Series 20 - No. 5**



U.S. DEPARTMENT OF  
HEALTH, EDUCATION, AND WELFARE

Public Health Service  
HEALTH RESOURCES ADMINISTRATION  
5600 Fishers Lane  
Rockville, Md. 20852

OFFICIAL BUSINESS  
Penalty Private Use, \$300

For publications in the  
*Vital and Health Statistics*  
Series call 301-443-NCHS.

POSTAGE AND FEES PAID  
U.S. DEPARTMENT OF HEW

HEW 390



THIRD CLASS  
BLK. RT.