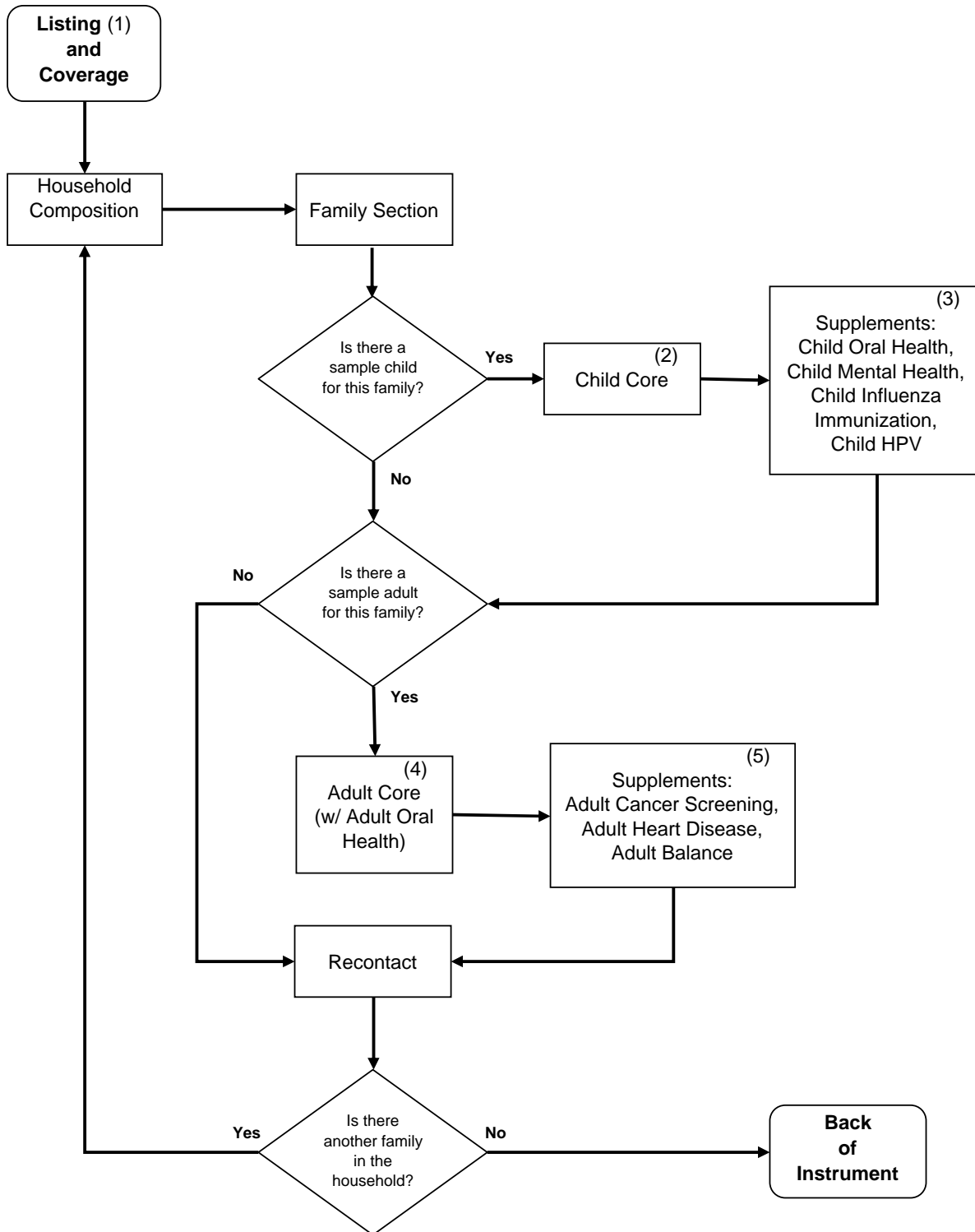


Flowchart of the 2008 NHIS Questionnaire Components



(1) NHIS over sampled households with Blacks, Asians, and Hispanics.

(2) 2008 additional child asthma and vision questions were asked in the CHS (Child Condition; Limitations of Activity & Health Status) section; also, questions on child cancer screening were embedded in the CAU (Child Health Care Access & Utilization) section.

(3) Questions from four supplements were added to the end of the Child Core questionnaire.

(4) 2008 supplemental questions on asthma, vision, heart disease, and balance were asked in the ACN (Adult Conditions) section. also, questions on adult immunization were embedded in the AAU (Adult Health Care Access & Utilization) section; Adult Oral Health supplemental questions were asked after AAU and before ADS (Adult AIDs) sections.

(5) Questions from three supplements were added to the end of the Adult Core questionnaire.