

## Advance Report of Final Mortality Statistics, 1983

### Highlights

In 1983, numbers of deaths and the death rate increased from the previous year. A total of 2,019,201 deaths were registered in the United States, 44,404 more than in 1982 and the largest annual number ever recorded. The death rate for 1983 was 862.8 deaths per 100,000 population compared with a rate of 852.0 in 1982. Contributing to these increases were two factors: (a) the "aging" of the U.S. population, that is, the increasing proportion of older people in the population and (b) an influenza outbreak at the beginning of 1983.

In contrast, the risk of dying actually declined between 1982 and 1983. The age-adjusted death rate, which eliminates the effects of the aging of the population, declined somewhat to 550.5, the lowest level ever reported in the United States. In 1983, life expectancy at birth reached a record high level, 74.6 years. Although the difference in life expectancy for males and females continued to narrow, women are still expected to outlive men by an average of 7.1 years. While between 1982 and 1983 improvements were greater for the black than for the white population, life expectancy at birth in 1983 was 5.6 years higher for the white population.

Continuing to account for almost three out of four deaths in the United States were the first four of the 15 leading causes of death—Diseases of heart; Malignant neoplasms, including neoplasms of lymphatic and hematopoietic tissues (cancer); Cerebrovascular diseases (stroke); and Accidents and adverse effects. The age-adjusted death rates for three of these four major causes declined between 1982 and 1983. The age-adjusted rate for Malignant neoplasms, including neoplasms of lymphatic and hematopoietic tissues, increased. Homicide and legal intervention showed the largest decrease in age-adjusted death rates since the rates began to decline in the mid 1970's.

As in previous years, males experienced higher mortality than females for each of the 15 leading causes of death. The greatest sex difference in mortality was for Homicide and legal intervention; the smallest for Diabetes mellitus. The black population had higher rates than the white population for most

leading causes of death. The two exceptions to this general race differential included the age-adjusted rates for Suicide and Chronic obstructive pulmonary diseases and allied conditions, with rates for the black population being lower than those for the white population. The greatest race difference continued to be for Homicide and legal intervention, for which the age-adjusted rate was substantially higher for the black than for the white population.

Infant mortality was at a record low in 1983. While the downward trend in neonatal mortality continued for both the white and black populations, for the first time since 1965 there was an increase in postneonatal mortality for the black population. The infant mortality rate for the black population continued to be about twice that for the white population.

### Deaths and death rates

In 1983 there were 2,019,201 deaths recorded in the United States, 44,404 more than in 1982. The death rate increased in 1983 to 862.8 deaths per 100,000 population, compared with 852.0 in 1982. Provisional data indicate that the rate for 1984 was 866.8, somewhat higher than that for 1981, 1982, and 1983, but lower than that for 1980. The main factor accounting for the higher death rate in 1983 than in the previous year was the aging of the U.S. population. While the total U.S. population grew by 1 percent between 1982 and 1983 (from 232 million to 234 million), the population aged 65 years and over grew by over 2 percent (from 26.8 million to 27.5 million). Also contributing to the increase between 1982 and 1983 was an outbreak of influenza in the latter year, which resulted in an elevated level of mortality.<sup>1</sup>

The age-adjusted death rate decreased to 550.5 in 1983, down from 553.8 deaths per 100,000 population in 1982. The decrease in 1983 continues the long-term downward trend in the risk of mortality in the United States, bringing the age-adjusted rate to a record low (figure 1). Age-adjusted death rates show what the level of mortality would be if there were no

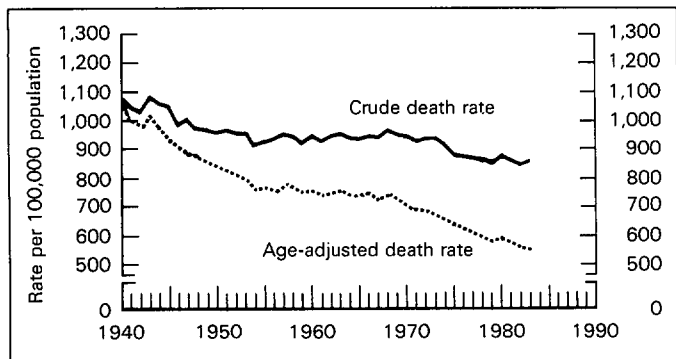


Figure 1. Crude and age-adjusted death rates: United States, 1940-83

changes in the age composition of the population from year to year. Thus, they are better indicators than unadjusted death rates in showing changes in the risk of death over a period of time when the distribution of the population by age is changing. They are also better indicators of risk when comparisons of mortality are being made for sex or race subgroups of the population that have different age compositions.

### Death rates by age, sex, and race

Death rates for most age groups for both sexes combined declined between 1982 and 1983 except for ages 55-64, 75-84, and 85 years and over for whom death rates increased (figure 2). The largest increase was for the age group 75-84

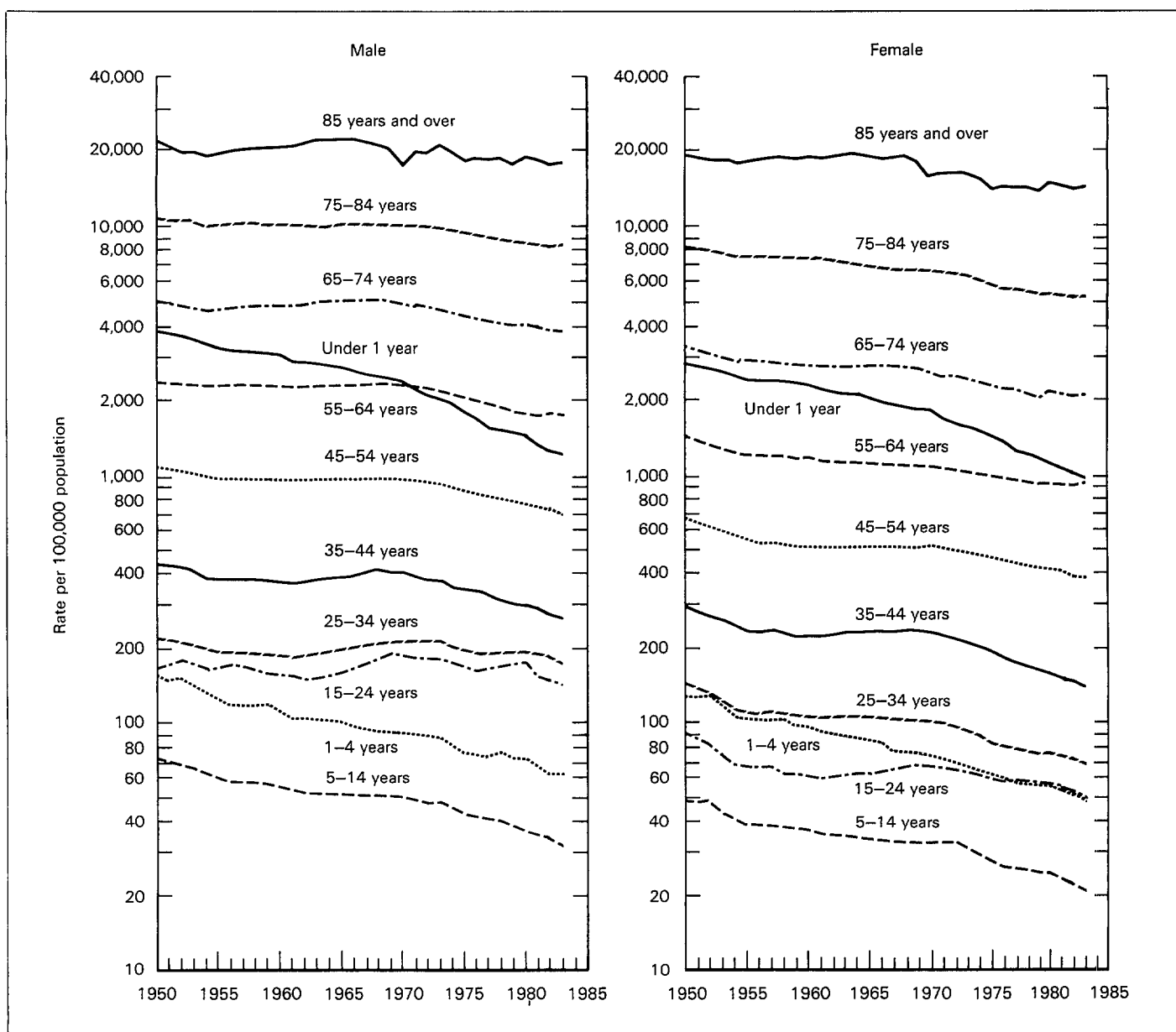


Figure 2. Death rates by age and sex: United States, 1950-83

years (2 percent), while the smallest decline was for the age group 65–74 years (less than 1 percent). The largest declines occurred in the age groups under 1, 5–14, and 15–24 years (5 percent each) (table A). For age groups under 55 years for males and females, the decline in death rates between 1982 and 1983 represents a continuation of the general downward trend observed since 1950. In the past, males 15–24 years of age have been the primary exception to this general decline in age-specific death rates. However, since 1980, there has been a substantial decline in death rates for males aged 15–24 years, reflected in declines in motor vehicle accident mortality, a major cause of death for this group.

Between 1982 and 1983 the age-adjusted death rate for males decreased 1 percent while that for females increased slightly (0.1 percent). Both white males and black males experienced a decrease of 1 percent. The rate for white females declined slightly (0.2 percent), whereas the rate for black females increased nearly 2 percent. As in 1982, the 1983 age-adjusted death rate for males was 1.8 times that for females. The age-adjusted death rate decreased 1 percent for the white population and only 0.1 percent for the black population between 1982 and 1983. In 1983 the rate for the black population was 1.5 times that for the white population, the same as the ratio in 1982.

### Expectation of life at birth and at specified ages

In 1983 the average expectation of life at birth reached a record high of 74.6 years, up 0.1 year from 1982 (figure 3). This increase continued the general upward trend in life expectancy in the United States that was interrupted in 1980.

The expectation of life at birth for 1983 represents the average number of years that a group of infants would live if they were to experience throughout life the age-specific death rates prevailing in 1983. In 1983, females could expect to live an average of 78.1 years compared with 71.0 years for males.

Between 1982 and 1983 life expectancy for males increased 0.1 year while life expectancy for females remained

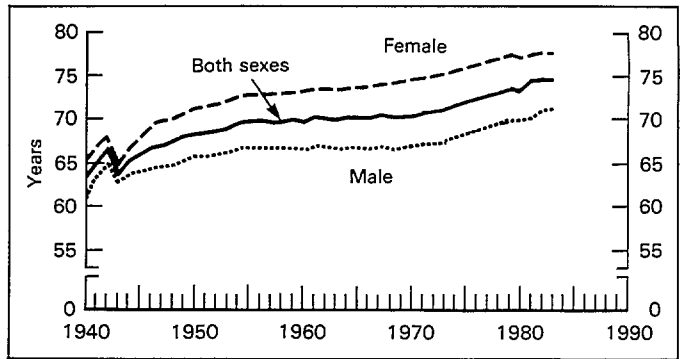


Figure 3. Life expectancy by sex: United States, 1940–83

the same. The difference in life expectancy between the sexes, which was widening for many years, now appears to be decreasing. The difference was 7.1 years in 1983, 7.2 years in 1982, 7.4 years in 1981 and 1980, compared with 7.6 years in 1970 and 6.5 years in 1960.

Between 1982 and 1983 the black population experienced an increase of 0.2 year in life expectancy, to 69.6 years, while the white population experienced an increase of 0.1 year, to 75.2 years in 1983. In 1970 life expectancy for the white population was 71.7 years, while that for the black population was 64.1 years. The difference in life expectancy between the white and black populations thus narrowed from 7.6 years in 1970 to 5.6 years in 1983.

Among the race-sex groups, white females continued to have the highest life expectancy at birth (78.7 years), followed by black females (73.6 years), white males (71.7 years), and black males (65.4 years). The largest gain in life expectancy between 1970 and 1983 was for black males (5.4 years), followed by black females (5.3 years), white males (3.7 years), and white females (3.1 years).

The 1983 life tables shown in this report may be used to compare life expectancies at any age from birth onward. For example, a person who has attained the age of 65 years may look forward to living to an older age, on the average, than one who has attained the age of 50 years. The person aged 50 years could expect to live an average of 28.3 more years for a total of 78.3 years, while the person 65 years of age could expect to live an average of 16.7 more years for a total of 81.7 years.

Table A. Percent change in death rates between 1982 and 1983 by age and sex: United States

Age	Total	Male	Female
Percent change			
All ages	+1.3	+0.5	+2.2
Under 1 year	-4.9	-5.2	-4.4
1–4 years	-3.0	-	-6.4
5–14 years	-4.9	-4.7	-5.8
15–24 years	-5.0	-5.9	-1.7
25–34 years	-3.0	-3.3	-2.1
35–44 years	-2.7	-2.5	-2.9
45–54 years	-2.5	-3.6	-1.0
55–64 years	+0.1	-0.6	+1.1
65–74 years	-0.4	-1.1	+0.4
75–84 years	+1.8	-1.8	+1.5
85 years and over	+0.8	-1.1	+0.8

### Leading causes of death

Deaths assigned to the 15 leading causes accounted for 89 percent of the total number of deaths in 1983 (table B). (For ranking procedures, see Technical notes.) The ranking of the leading causes for 1983 changed slightly from the list based on data for 1982. Septicemia, the 15th leading cause in 1982, moved to 14th; while Congenital anomalies, the 14th leading cause in 1982, became the 15th in 1983. Age-adjusted death rates are shown in table C and figure 4 for 13 of the 15 leading causes. Because deaths from the other two causes (Congenital anomalies and Certain conditions originating in the perinatal

**Table B. Death rates and percent of total deaths for the 15 leading causes of death: United States, 1983**

[Rates per 100,000 population]

Rank <sup>1</sup>	Cause of death (Ninth Revision International Classification of Diseases, 1975)	Rate	Percent of total deaths
...	All causes .....	862.8	100.0
1	Diseases of heart .....	329.2	38.2
2	Malignant neoplasms, including neoplasms of lymphatic and hematopoietic tissues .....	189.3	21.9
3	Cerebrovascular diseases .....	66.5	7.7
4	Accidents and adverse effects .....	39.5	4.6
...	Motor vehicle accidents .....	19.0	...
...	All other accidents and adverse effects .....	20.5	...
5	Chronic obstructive pulmonary diseases and allied conditions .....	28.3	3.3
6	Pneumonia and influenza .....	23.9	2.8
7	Diabetes mellitus .....	15.5	1.8
8	Suicide .....	12.1	1.4
9	Chronic liver disease and cirrhosis .....	11.7	1.4
10	Atherosclerosis .....	11.3	1.3
11	Homicide and legal intervention .....	8.6	1.0
12	Certain conditions originating in the perinatal period .....	8.3	1.0
13	Nephritis, nephrotic syndrome, and nephrosis .....	8.1	0.9
14	Septicemia .....	5.7	0.7
15	Congenital anomalies .....	5.6	0.7
...	All other causes .....	99.3	11.5

<sup>1</sup>Rank based on number of deaths; see Technical notes.

period) occur mainly among infants under 1 year, age-adjusted rates for these causes are not shown.

For 7 of these 13 leading causes of death the age-adjusted death rates decreased between 1982 and 1983 (table C). These causes were Diseases of the heart, Cerebrovascular diseases, Accidents and adverse effects, Suicide, Chronic liver disease and cirrhosis, Atherosclerosis, and Homicide and legal intervention. Among these seven causes showing a decline in 1982, the largest decline was for Homicide and legal intervention (11 percent) followed by Atherosclerosis, Cerebrovascular diseases, and Accidents and adverse effects (4 percent each).

Increases in the age-adjusted death rates between 1982 and 1983 occurred for six causes—Malignant neoplasms, including neoplasms of lymphatic and hematopoietic tissues; Chronic obstructive pulmonary diseases and allied conditions; Pneumonia and influenza; Diabetes mellitus; Nephritis, nephrotic syndrome, and nephrosis; and Septicemia. For Septicemia the increase of 13 percent continued the rapid increase observed for the past three decades (figure 4). The increase for Pneumonia and influenza was 8 percent and the increase for Chronic obstructive pulmonary diseases and allied conditions was 7 percent; both were reflections of the influenza outbreak. Increases for the other three leading causes were 3 percent or less.

Mortality levels for each of the 15 leading causes of death were higher for males than for females (table D). The largest differences were for violent and accidental causes of death.

**Table C. Age-adjusted death rates for 1983 and percent changes in age-adjusted death rates for the 15 leading causes of death from 1982 to 1983 and 1979 to 1983: United States**

[Rates per 100,000 population]

Rank <sup>1</sup>	Cause of death (Ninth Revision International Classification of Diseases, 1975)	Age-adjusted death rates for 1983	Percent change from—	
			1982 to 1983	1979 to 1983
...	All causes .....	550.5	-0.6	-4.6
1	Diseases of heart .....	188.8	-0.9	-5.4
2	Malignant neoplasms, including neoplasms of lymphatic and hematopoietic tissues .....	132.6	+0.1	+1.4
3	Cerebrovascular diseases .....	34.4	-3.9	-17.3
4	Accidents and adverse effects .....	35.3	-3.6	-17.7
...	Motor vehicle accidents .....	18.5	-4.1	-20.3
...	All other accidents and adverse effects .....	16.8	-2.9	-14.3
5	Chronic obstructive pulmonary diseases and allied conditions .....	17.4	+7.4	+19.2
6	Pneumonia and influenza .....	11.8	+8.3	+5.4
7	Diabetes mellitus .....	9.9	+3.1	+1.0
8	Suicide .....	11.4	-1.7	-2.6
9	Chronic liver disease and cirrhosis .....	10.2	-2.9	-15.0
10	Atherosclerosis .....	4.6	-4.2	-19.3
11	Homicide and legal intervention .....	8.6	-11.3	-15.7
12	Certain conditions originating in the perinatal period <sup>2</sup> .....	...	-6.3	-21.1
13	Nephritis, nephrotic syndrome, and nephrosis .....	4.6	+2.2	+7.0
14	Septicemia .....	3.4	+13.3	+47.8
15	Congenital anomalies <sup>2</sup> .....	...	-2.1	-6.0

<sup>1</sup>Rank based on number of deaths; see Technical notes.

<sup>2</sup>Inasmuch as deaths from these causes occur mainly among infants, percent changes are based on infant mortality rates instead of age-adjusted death rates.

Specifically, the age-adjusted death rates for Homicide and legal intervention and Suicide were almost four times as high for males as for females. The rate for Accidents and adverse effects was almost three times as high for males as for females. The smallest sex difference was for Diabetes mellitus, with a male-to-female ratio of 1.01.

The slight increase (less than 1 percent) in the age-adjusted death rate for women between 1982 and 1983 reflected increases in rates for a number of leading causes, including: Malignant neoplasms, including neoplasms of lymphatic and hematopoietic tissues; Chronic obstructive pulmonary diseases and allied conditions; and Pneumonia and influenza. These increases were of sufficient magnitude to more than offset decreases in rates for other leading causes of death including Diseases of the heart, Cerebrovascular diseases, and Accidents

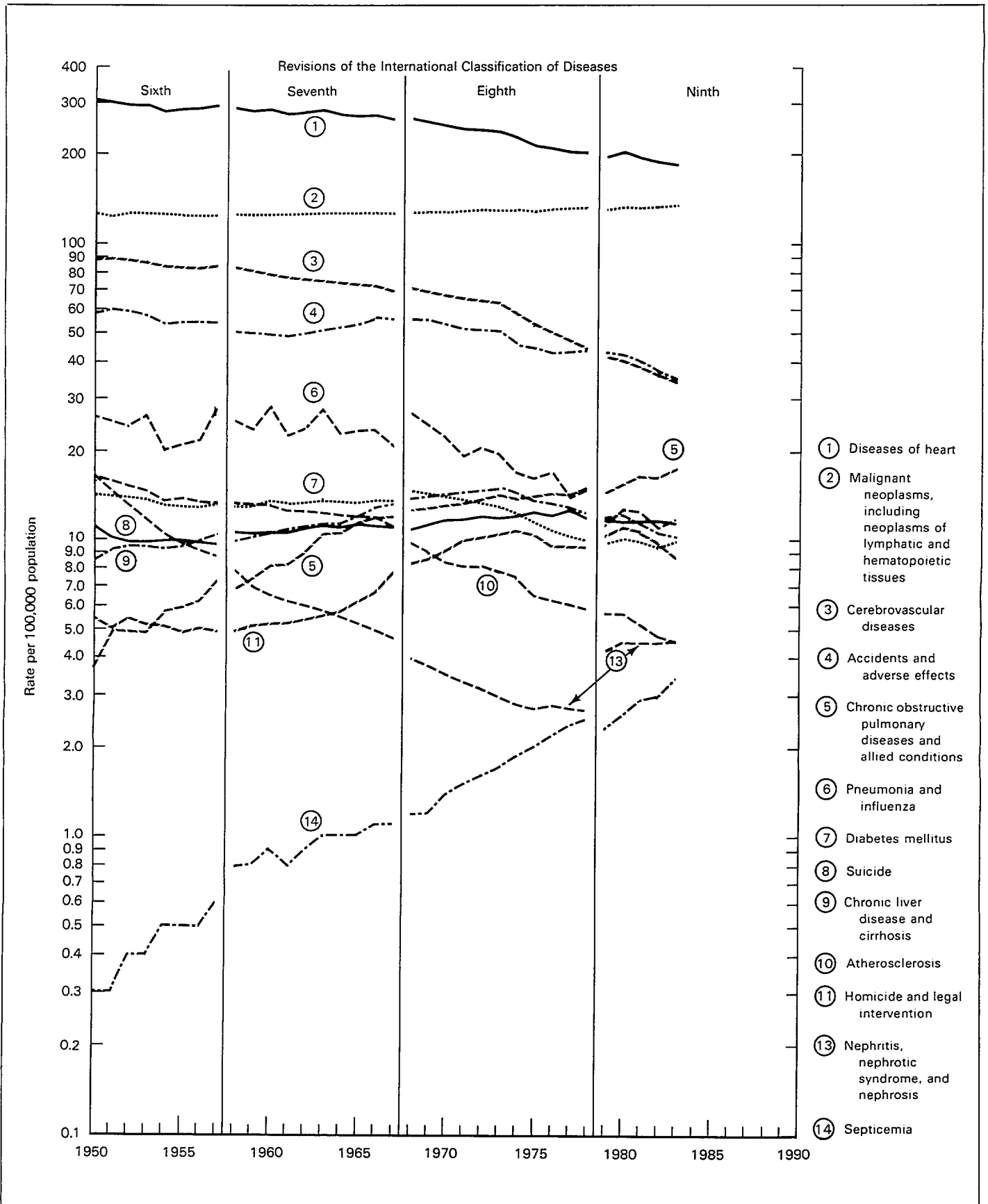


Figure 4. Age-adjusted death rates for 13 of the 15 leading causes of death: United States, 1950-83

**Table D. Ratio of age-adjusted death rates for the 15 leading causes of death, by sex and race: United States, 1983**

Rank <sup>1</sup>	Cause of death (Ninth Revision International Classification of Diseases, 1975)	Ratio of—	
		Male to female	Black to white
...	All causes.....	1.76	1.47
1	Diseases of heart.....	1.96	1.31
2	Malignant neoplasms, including neoplasms of lymphatic and hematopoietic tissues.....	1.49	1.33
3	Cerebrovascular diseases.....	1.18	1.82
4	Accidents and adverse effects.....	2.82	1.21
...	Motor vehicle accidents.....	2.74	0.85
...	All other accidents and adverse effects.....	2.93	1.64
5	Chronic obstructive pulmonary diseases and allied conditions.....	2.47	0.76
6	Pneumonia and influenza.....	1.84	1.43
7	Diabetes mellitus.....	1.01	2.21
8	Suicide.....	3.50	0.49
9	Chronic liver disease and cirrhosis.....	2.16	1.70
10	Atherosclerosis.....	1.29	1.02
11	Homicide and legal intervention.....	3.57	5.51
12	Certain conditions originating in the perinatal period <sup>2</sup> .....	1.26	2.35
13	Nephritis, nephrotic syndrome, and nephrosis.....	1.46	2.70
14	Septicemia.....	1.46	2.79
15	Congenital anomalies <sup>2</sup> .....	1.11	1.01

<sup>1</sup>Rank based on number of deaths; see Technical notes.  
<sup>2</sup>Inasmuch as deaths from these causes occur mainly among infants, ratios are based on infant mortality rates instead of age-adjusted death rates.

and adverse effects. For men, the age-adjusted death rate for all causes combined decreased by over 1 percent between 1982 and 1983, but rates for some leading causes increased. These included Chronic obstructive pulmonary diseases and allied conditions and Pneumonia and influenza.

Mortality was higher for the black population than for the white population for 13 of the 15 leading causes. The largest differential was for Homicide and legal intervention, where the age-adjusted rate for the black population was nearly six times that of the white population. Other causes for which the differential was large include Septicemia and Nephritis, nephrotic syndrome, and nephrosis, with black-to-white ratios of 2.8 and 2.7, respectively. Age-adjusted rates for the black population were lower than those for the white population for two causes—Chronic obstructive pulmonary diseases and allied conditions and Suicide.

**Infant mortality**

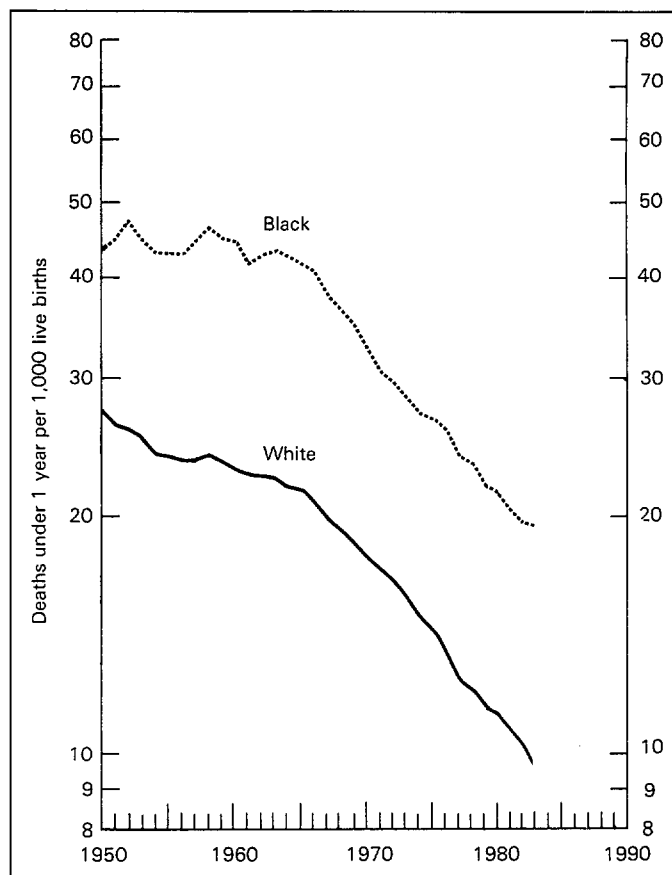
In 1983 there were 40,627 deaths under 1 year of age. The infant mortality rate of 11.2 infant deaths per 1,000 live births was the lowest rate ever recorded for the United States. The rate declined 3 percent from the level of 11.5 in 1982. Provisional data indicate that the rate for 1984 declined further, to 10.6. Among white infants, the mortality rate (per 1,000 live births) decreased 4 percent, from 10.1 in 1982 to 9.7 in 1983,

while for black infants the rate decreased 2 percent, from 19.6 in 1982 to 19.2 in 1983. The infant mortality rate for black infants was almost twice that for white infants in 1983, as it was 20 years earlier (figure 5).

The downward trend in infant mortality has slowed since 1981. While the downward trend in neonatal mortality has continued and has been shared by both the white and black populations, the postneonatal mortality rate increased 3 percent between 1982 and 1983. The increase in postneonatal mortality reflects an increase for the black population; the rate for the white population was unchanged between the two years. The rate for the black population was unchanged between the previous two years, 1981 and 1982, while the rate for the white population declined 3 percent.

The leading cause of infant mortality was Congenital anomalies, with an infant mortality rate of 240.0 deaths per 100,000 live births. Rates for the next three leading causes were at substantially lower levels—Sudden infant death syndrome (145.8), Respiratory distress syndrome (101.2), and Disorders relating to short gestation and unspecified low birth-weight (91.6). These four causes accounted for just over half of all deaths of infants under 1 year of age in 1983. Among the 10 leading causes of infant deaths, those ranking fifth through tenth accounted for only 15 percent of all infant deaths.

The difference between infant mortality rates for black and



**Figure 5. Infant mortality rates by race: United States, 1950-83**

white infants varied by cause, although the risk was higher for black infants than for white infants for all leading causes. Expressed as the ratio of the infant mortality rate for black infants to that for white infants, the leading causes may be ranked, beginning with the highest ratio, as follows: Disorders relating to short gestation and unspecified low birthweight (3.4); Pneumonia and influenza (3.0); Newborn affected by maternal complications of pregnancy (2.1); Sudden infant death syndrome (2.1); Accidents and adverse effects (2.0); Intrauterine hypoxia and birth asphyxia (1.9); Respiratory distress syndrome (1.7); Infections specific to the perinatal period (1.7); and Newborn affected by complications of placenta, cord, and membranes (1.7). The smallest race ratio was for Congenital anomalies (1.02).

**Maternal mortality**

In 1983, 290 women were reported to have died of maternal causes (table E). As in previous years, this number does not include all deaths occurring to pregnant women, but only deaths

**Table E. Maternal deaths and maternal mortality rates by race: United States, 1983**

[Maternal deaths are those assigned to Complications of pregnancy, childbirth, and the puerperium, category numbers 630-676 of the *Ninth Revision International Classification of Diseases, 1975*. Rates per 100,000 live births in specified group]

Race	Number	Rate
All races.....	290	8.0
White.....	170	5.9
All other.....	120	16.3
Black.....	107	18.3

assigned to Complications of pregnancy, childbirth, and the puerperium (ICD-9 Nos. 630-676). The maternal mortality rate was 1 percent higher in 1983 (8.0 deaths per 100,000 live births) than in 1982 (7.9), but the increase is not statistically significant. Black women were three times as likely as white women to die of causes associated with pregnancy, childbirth, and the puerperium.

## References

- <sup>1</sup>Centers for Disease Control: *Morbidity and Mortality Weekly Report*, Vol. 31, No. 54, Annual Summary 1982. DHHS Pub. No. (CDC) 84-8241. Atlanta, Dec. 1983.
- <sup>2</sup>World Health Organization: *Manual of the International Statistical Classification of Disease, Injuries, and Causes of Death*, based on the recommendations of the Ninth Revision Conference, 1975. Geneva. World Health Organization, 1977.
- <sup>3</sup>National Center for Health Statistics, A. J. Klebba and J. H. Scott: Estimates of selected comparability ratios based on dual coding of 1976 death certificates by the Eighth and Ninth Revisions of the International Classification of Diseases. *Monthly Vital Statistics Report*. Vol. 28, No. 11 Supp. DHEW Pub. No. (PHS) 80-1120. Public Health Service. Hyattsville, Md., Feb. 29, 1980.
- <sup>4</sup>National Center for Health Statistics, A. J. Klebba and A. B. Dolman: Comparability of mortality statistics for the Seventh and Eighth Revisions of the International Classification of Diseases, United States. *Vital and Health Statistics*. Series 2, No. 66. DHEW Pub. No. (HRA) 76-1340. Health Resources Administration. Washington. U.S. Government Printing Office, Oct. 1975.
- <sup>5</sup>National Center for Health Statistics: Comparability of mortality statistics for the Sixth and Seventh Revisions, United States, 1958. *Vital Statistics—Special Reports*. Vol. 51, No. 4. Public Health Service. Washington. U.S. Government Printing Office, Mar. 1965.
- <sup>6</sup>National Center for Health Statistics: Vital Statistics, instructions for classifying the underlying cause of death, annually. *NCHS Instruction Manual*, Part 2a. Public Health Service. Rockville, Md.
- <sup>7</sup>U.S. Bureau of the Census: Estimates of the population of the United States, by age, sex, and race: 1980 to 1984. *Current Population Reports*. Series P-25, No. 965. Washington. U.S. Government Printing Office, Mar. 1985.
- <sup>8</sup>U.S. Bureau of the Census: State population estimates, by age and components of change: 1980 to 1984. *Current Population Reports*. Series P-25, No. 970. Washington. U.S. Government Printing Office, June 1985.
- <sup>9</sup>U.S. Bureau of the Census: Preliminary estimates of the population of the United States, by age, sex, and race, 1970 to 1981. *Current Population Reports*. Series P-25, No. 917. Washington. U.S. Government Printing Office, July 1982.
- <sup>10</sup>National Center for Health Statistics, M. G. Sirken: Comparison of two methods of constructing abridged life tables by reference to a "standard" table. *Vital and Health Statistics*. Series 2, No. 4. PHS Pub. No. 1000. Public Health Service. Washington. U.S. Government Printing Office, Mar. 1966.

---

### Symbols

- - - Data not available
  - . . . Category not applicable
  - Quantity zero
  - 0.0 Quantity more than 0 but less than 0.05
  - Z Quantity more than zero but less than 500 where numbers are rounded to thousands
  - \* Figure does not meet standards of reliability or precision
-



**Table 1. Deaths, death rates, age-adjusted death rates, and life expectancy at birth, by race and sex: United States, 1940, 1950, 1960, and 1970-83**

[Rates per 100,000 population in specified group. Rates and life expectancy at birth are based on populations enumerated as of April 1 for census years and estimated as of July 1 for all other years. Beginning 1970 excludes deaths of nonresidents of the United States]

Year	All other											
	All races			White			Total			Black		
	Both sexes	Male	Female	Both sexes	Male	Female	Both sexes	Male	Female	Both sexes	Male	Female
Number												
1983	2,019,201	1,071,923	947,278	1,765,582	931,779	833,803	253,619	140,144	113,475	233,124	127,911	105,213
1982	1,974,797	1,056,440	918,357	1,729,085	919,239	809,846	245,712	137,201	108,511	226,513	125,610	100,903
1981	1,977,981	1,063,772	914,209	1,731,233	925,490	805,743	246,748	138,282	108,466	228,560	127,296	101,264
1980	1,989,841	1,075,078	914,763	1,738,607	933,878	804,729	251,234	141,200	110,034	233,135	130,138	102,997
1979	1,913,841	1,044,959	868,882	1,676,145	910,137	766,008	237,696	134,822	102,874	220,818	124,433	96,385
1978	1,927,788	1,055,290	872,498	1,689,722	920,123	769,599	238,066	135,167	102,899	221,340	124,663	96,677
1977	1,899,597	1,046,243	853,354	1,664,100	912,670	751,430	235,497	133,573	101,924	220,076	123,894	96,182
1976	1,909,840	1,051,983	857,457	1,674,989	918,589	756,400	234,451	133,394	101,057	219,442	123,977	95,465
1975	1,892,879	1,050,819	842,060	1,660,366	917,804	742,562	232,513	133,015	99,498	217,932	123,770	94,162
1974	1,934,388	1,071,627	862,761	1,697,295	936,640	760,655	237,093	134,987	102,106	222,948	126,036	96,912
1973	1,973,003	1,096,795	876,208	1,728,405	957,918	770,487	244,598	138,877	105,721	230,110	129,647	100,463
1972 <sup>1</sup>	1,963,944	1,096,198	867,746	1,721,468	957,518	763,950	242,476	138,680	103,796	228,450	129,740	98,710
1971	1,927,542	1,077,332	850,210	1,689,771	942,337	747,434	237,771	134,995	102,776	224,138	126,362	97,776
1970	1,921,031	1,078,478	842,553	1,682,096	942,437	739,659	238,935	136,041	102,894	225,647	127,540	98,107
1960	1,711,982	975,648	736,334	1,505,335	860,857	644,478	206,647	114,791	91,856	196,010	107,701	88,309
1950	1,452,454	827,749	624,705	1,276,085	731,366	544,719	176,369	96,383	79,986	169,606	92,004	77,602
1940	1,417,269	791,003	626,266	1,231,223	690,901	540,322	186,046	100,102	85,944	178,743	95,517	83,226
Death rate												
1983	862.8	942.6	787.4	884.6	957.4	815.3	736.6	854.9	629.2	830.5	963.3	711.2
1982	852.0	938.0	770.7	872.9	951.8	797.9	728.9	854.8	614.5	819.2	960.4	692.4
1981	862.4	954.5	775.4	880.3	965.1	799.6	755.0	889.4	633.0	841.7	991.6	707.3
1980	878.3	976.9	785.3	892.5	983.3	806.1	791.7	936.5	660.6	875.4	1,034.1	733.3
1979	852.2	957.5	752.7	865.2	963.3	771.8	771.0	920.3	635.7	839.3	999.6	695.3
1978	868.0	977.5	764.5	880.2	982.7	782.7	790.0	943.2	651.0	855.1	1,016.8	709.5
1977	864.4	978.9	756.0	874.6	983.0	771.3	798.6	951.7	659.6	864.0	1,026.0	718.0
1976	877.6	993.8	767.6	887.7	997.3	783.1	812.1	969.8	668.6	875.0	1,041.6	724.5
1975	878.5	1,002.0	761.4	886.9	1,004.1	775.1	823.1	987.6	673.1	882.5	1,055.4	726.1
1974	906.7	1,031.5	788.3	913.8	1,032.4	800.5	859.1	1,025.1	707.6	916.5	1,090.0	759.4
1973	933.5	1,065.2	808.3	937.7	1,063.8	817.3	904.5	1,075.3	748.4	960.6	1,137.7	800.0
1972 <sup>1</sup>	938.4	1,074.9	808.7	941.7	1,072.0	817.3	915.5	1,095.2	750.9	969.2	1,155.9	799.4
1971	932.0	1,069.4	801.4	933.9	1,066.5	807.4	918.4	1,090.5	760.7	968.5	1,146.8	806.4
1970	945.3	1,090.3	807.8	946.3	1,086.7	812.6	938.4	1,115.9	775.3	999.3	1,186.6	829.2
1960	954.7	1,104.5	809.2	947.8	1,098.5	800.9	1,008.5	1,152.0	872.6	1,038.6	1,181.7	905.0
1950	963.8	1,106.1	823.5	945.7	1,089.5	803.3	1,119.4	1,251.1	993.5	---	---	---
1940	1,076.4	1,197.4	954.6	1,041.5	1,162.2	919.4	1,382.8	1,513.7	1,256.2	---	---	---
Age-adjusted death rate <sup>2</sup>												
1983	550.5	725.3	411.5	528.0	698.4	392.7	703.1	916.3	535.2	777.9	1,019.6	590.4
1982	553.8	733.1	411.2	531.8	706.0	393.3	704.6	928.4	529.3	778.7	1,035.0	581.4
1981	568.2	753.3	420.4	544.6	724.4	401.4	732.6	964.3	549.4	803.9	1,067.7	599.1
1980	585.8	777.2	432.6	559.4	745.3	411.1	774.2	1,015.1	582.6	842.5	1,112.8	631.1
1979	577.0	768.6	423.1	551.9	738.4	402.5	757.1	994.8	566.9	812.1	1,073.3	605.0
1978	595.0	791.4	437.4	569.5	761.1	416.4	780.0	1,021.0	585.8	831.8	1,093.9	622.7
1977	602.1	801.3	441.8	575.7	770.6	419.6	796.7	1,036.1	601.8	849.3	1,112.1	639.6
1976	618.5	820.9	455.0	591.3	789.3	432.5	818.5	1,063.4	618.3	870.5	1,138.3	654.5
1975	630.4	837.2	462.5	602.2	804.3	439.0	840.6	1,090.1	634.5	890.8	1,163.0	670.6
1974	659.5	870.9	487.0	629.0	836.1	461.0	889.6	1,142.4	680.5	940.4	1,215.5	717.1
1973	687.3	905.9	508.1	654.0	868.5	479.3	942.2	1,199.5	728.1	993.1	1,272.1	764.9
1972 <sup>1</sup>	698.0	918.0	516.6	664.0	879.3	487.6	958.6	1,223.1	737.1	1,009.5	1,296.6	772.8
1971	697.6	913.3	519.1	663.7	876.0	489.1	959.5	1,206.7	749.7	1,007.8	1,276.1	784.6
1970	714.3	931.6	532.5	679.6	893.4	501.7	983.4	1,231.4	770.8	1,044.0	1,318.6	814.4
1960	760.9	949.3	590.6	727.0	917.7	555.0	1,046.1	1,211.0	893.3	1,073.3	1,246.1	916.9
1950	841.5	1,001.6	688.4	800.4	963.1	645.0	1,225.7	1,358.5	1,095.7	---	---	---
1940	1,076.1	1,213.0	938.9	1,017.2	1,155.1	879.0	1,634.7	1,764.4	1,504.7	---	---	---

See footnotes at end of table.

Table 1. Deaths, death rates, age-adjusted death rates, and life expectancy at birth, by race and sex: United States, 1940, 1950, 1960, and 1970-83—Con.

[Rates per 100,000 population in specified group. Rates and life expectancy at birth are based on populations enumerated as of April 1 for census years and estimated as of July 1 for all other years. Beginning 1970 excludes deaths of nonresidents of the United States]

Year	All races			White			All other					
	Both sexes	Male	Female	Both sexes	Male	Female	Total			Black		
							Both sexes	Male	Female	Both sexes	Male	Female
	Life expectancy at birth (e <sub>0</sub> )											
1983 . . . .	74.6	71.0	78.1	75.2	71.7	78.7	71.1	67.2	74.9	69.6	65.4	73.6
1982 <sup>3</sup> . . .	74.5	70.9	78.1	75.1	71.5	78.7	71.0	66.8	75.0	69.4	65.1	73.7
1981 <sup>3</sup> . . .	74.2	70.4	77.8	74.8	71.1	78.4	70.3	66.1	74.4	68.9	64.5	73.2
1980 <sup>3</sup> . . .	73.7	70.0	77.4	74.4	70.7	78.1	69.5	65.3	73.6	68.1	63.8	72.5
1979 . . . .	73.9	70.0	77.8	74.6	70.8	78.4	69.8	65.4	74.1	68.5	64.0	72.9
1978 . . . .	73.5	69.6	77.3	74.1	70.4	78.0	69.3	65.0	73.5	68.1	63.7	72.4
1977 . . . .	73.3	69.5	77.2	74.0	70.2	77.9	68.9	64.7	73.2	67.7	63.4	72.0
1976 . . . .	72.9	69.1	76.8	73.6	69.9	77.5	68.4	64.2	72.7	67.2	62.9	71.6
1975 . . . .	72.6	68.8	76.6	73.4	69.5	77.3	68.0	63.7	72.4	66.8	62.4	71.3
1974 . . . .	72.0	68.2	75.9	72.8	69.0	76.7	67.1	62.9	71.3	66.0	61.7	70.3
1973 . . . .	71.4	67.6	75.3	72.2	68.5	76.1	66.1	62.0	70.3	65.0	60.9	69.3
1972 <sup>1</sup> . . .	71.2	67.4	75.1	72.0	68.3	75.9	65.7	61.5	70.1	64.7	60.4	69.1
1971 . . . .	71.1	67.4	75.0	72.0	68.3	75.8	65.6	61.6	69.8	64.6	60.5	68.9
1970 . . . .	70.8	67.1	74.7	71.7	68.0	75.6	65.3	61.3	69.4	64.1	60.0	68.3
1960 . . . .	69.7	66.6	73.1	70.6	67.4	74.1	63.6	61.1	66.3	---	---	---
1950 . . . .	68.2	65.6	71.1	69.1	66.5	72.2	60.8	59.1	62.9	---	---	---
1940 . . . .	62.9	60.8	65.2	64.2	62.1	66.6	53.1	51.5	54.9	---	---	---

<sup>1</sup>Deaths based on a 50-percent sample.

<sup>2</sup>For method of computation, see Technical notes.

<sup>3</sup>Data have been revised; see Technical notes.

**Table 2. Deaths and death rates by age, race, and sex: United States, 1983**

[Rates per 100,000 population in specified group]

Age	All races						All other					
	Both sexes		Male	Female	White		Total			Black		
	Both sexes	Male	Female	Both sexes	Male	Female	Both sexes	Male	Female	Both sexes	Male	Female
	Number											
All ages.....	2,019,201	1,071,923	947,278	1,765,582	931,779	833,803	253,619	140,144	113,475	233,124	127,911	105,213
Under 1 year.....	40,627	22,969	17,658	28,301	16,131	12,170	12,326	6,838	5,488	11,242	6,259	4,983
1-4 years.....	7,801	4,512	3,289	5,767	3,340	2,427	2,034	1,172	862	1,794	1,029	765
5-9 years.....	4,259	2,532	1,727	3,257	1,961	1,296	1,002	571	431	864	494	370
10-14 years.....	4,884	3,123	1,761	3,834	2,463	1,371	1,050	660	390	920	575	345
15-19 years.....	15,717	11,362	4,355	13,025	9,462	3,563	2,692	1,900	792	2,304	1,619	685
20-24 years.....	23,365	17,485	5,880	18,528	14,021	4,507	4,837	3,464	1,373	4,225	3,004	1,221
25-29 years.....	24,170	17,582	6,588	18,482	13,593	4,889	5,688	3,989	1,699	5,109	3,580	1,529
30-34 years.....	24,612	17,266	7,346	18,200	12,872	5,328	6,412	4,394	2,018	5,845	4,016	1,829
35-39 years.....	26,512	17,489	9,023	20,128	13,374	6,754	6,384	4,115	2,269	5,800	3,771	2,029
40-44 years.....	32,837	20,899	11,938	25,107	16,045	9,062	7,730	4,854	2,876	7,032	4,423	2,609
45-49 years.....	45,536	28,707	16,829	35,482	22,534	12,948	10,054	6,173	3,881	9,230	5,710	3,520
50-54 years.....	74,357	46,691	27,666	60,214	38,248	21,966	14,143	8,443	5,700	13,098	7,819	5,279
55-59 years.....	119,779	75,130	44,649	99,854	63,255	36,599	19,925	11,875	8,050	18,538	11,066	7,472
60-64 years.....	169,161	104,678	64,483	144,273	89,997	54,276	24,888	14,681	10,207	23,273	13,650	9,623
65-69 years.....	214,916	130,217	84,699	187,966	114,930	73,036	26,950	15,287	11,663	25,095	14,138	10,957
70-74 years.....	259,464	149,457	110,007	228,799	132,775	96,024	30,665	16,682	13,983	28,452	15,261	13,191
75-79 years.....	277,591	146,886	130,705	250,004	132,738	117,266	27,587	14,148	13,439	25,448	12,804	12,644
80-84 years.....	263,627	119,875	143,752	240,532	109,081	131,451	23,095	10,794	12,301	21,166	9,673	11,493
85 years and over.....	389,363	134,651	254,712	363,410	124,677	238,733	25,953	9,974	15,979	23,533	8,918	14,615
Not stated.....	623	412	211	419	282	137	204	130	74	156	102	54
	Rate											
All ages <sup>1</sup> .....	862.8	942.6	787.4	884.6	957.4	815.3	736.6	854.9	629.2	830.5	963.3	711.2
Under 1 year.....	1,107.3	1,223.7	985.4	948.1	1,052.9	837.6	1,802.0	1,976.3	1,618.9	2,032.9	2,243.4	1,818.6
1-4 years.....	55.9	63.3	48.3	50.8	57.3	43.9	78.5	89.5	67.2	85.3	96.8	73.6
5-9 years.....	26.5	30.8	22.0	24.9	29.2	20.4	33.5	37.8	29.1	35.2	39.8	30.5
10-14 years.....	27.2	34.0	20.1	26.1	32.7	19.2	31.9	39.6	24.0	33.9	42.0	25.7
15-19 years.....	81.6	116.0	46.1	82.3	117.2	45.9	78.7	110.0	46.8	80.3	112.5	47.9
20-24 years.....	108.8	162.6	54.9	102.9	154.6	50.4	139.8	205.6	77.4	148.9	220.6	82.8
25-29 years.....	114.9	167.8	62.4	103.9	152.1	55.2	175.2	259.2	99.4	194.9	290.3	110.1
30-34 years.....	128.6	182.1	76.0	111.7	157.8	65.5	225.4	332.1	132.7	262.9	390.3	153.2
35-39 years.....	164.8	220.8	110.4	144.4	192.8	96.4	296.9	418.2	194.6	349.0	499.5	223.7
40-44 years.....	246.8	320.5	176.0	218.2	281.7	155.9	430.2	587.7	296.2	497.3	688.9	337.5
45-49 years.....	407.3	526.6	293.8	365.4	471.3	262.6	683.9	920.0	485.7	780.9	1,071.3	542.4
50-54 years.....	663.8	863.8	477.2	615.3	802.2	437.7	999.5	1,325.4	732.6	1,137.0	1,509.5	832.6
55-59 years.....	1,038.3	1,380.8	732.6	976.8	1,304.8	680.8	1,517.5	2,002.5	1,118.1	1,700.7	2,240.1	1,251.6
60-64 years.....	1,581.2	2,102.4	1,127.5	1,506.6	2,008.9	1,065.1	2,220.2	2,942.1	1,638.4	2,475.9	3,273.4	1,840.0
65-69 years.....	2,337.6	3,166.0	1,667.0	2,278.7	3,101.2	1,608.0	2,848.8	3,756.0	2,163.8	3,102.0	4,109.9	2,361.4
70-74 years.....	3,549.4	4,844.6	2,603.7	3,470.3	4,767.5	2,521.6	4,276.8	5,560.7	3,353.2	4,664.3	6,104.4	3,664.2
75-79 years.....	5,306.7	7,257.2	4,075.6	5,278.8	7,277.3	4,028.4	5,561.9	7,074.0	4,540.2	6,016.1	7,713.3	4,919.8
80-84 years.....	8,313.7	10,897.7	6,941.2	8,265.7	10,886.3	6,893.1	8,848.7	11,127.8	7,546.6	9,491.5	11,942.0	8,151.1
85 years and over.....	15,168.0	17,977.4	14,010.6	15,477.4	18,443.3	14,278.3	11,796.8	13,478.4	10,944.5	12,320.9	14,155.6	11,329.5

<sup>1</sup>Figures for age not stated included in All ages but not distributed among age groups.

Table 3. Abridged life tables by race and sex: United States, 1983

[For explanation of the columns of the life tables, see section 6 of *Vital Statistics of the United States, 1980, Volume II*]

Age interval  Period of life between two exact ages stated in years (1)  x to x + n	Proportion dying	Of 100,000 born alive		Stationary population		Average remaining lifetime
	Proportion of persons alive at beginning of age interval dying during interval (2)	Number living at beginning of age interval (3)	Number dying during age interval (4)	In the age interval (5)	In this and all subsequent age intervals (6)	Average number of years of life remaining at beginning of age interval (7)
	$nq_x$	$l_x$	$n d_x$	$nL_x$	$T_x$	$e_x$
All races						
0-1 year	0.0111	100,000	1,115	99,047	7,462,729	74.6
1-5 years	0.0022	98,885	217	395,032	7,363,682	74.5
5-10 years	0.0013	98,668	131	492,983	6,968,650	70.6
10-15 years	0.0013	98,537	132	492,429	6,475,667	65.7
15-20 years	0.0041	98,405	399	491,120	5,983,238	60.8
20-25 years	0.0054	98,006	533	488,724	5,492,118	56.0
25-30 years	0.0057	97,473	559	485,966	5,003,394	51.3
30-35 years	0.0064	96,914	622	483,052	4,517,428	46.6
35-40 years	0.0083	96,292	796	479,583	4,034,376	41.9
40-45 years	0.0123	95,496	1,176	474,750	3,554,793	37.2
45-50 years	0.0201	94,320	1,900	467,198	3,080,043	32.7
50-55 years	0.0326	92,420	3,015	455,036	2,612,845	28.3
55-60 years	0.0507	89,405	4,536	436,337	2,157,809	24.1
60-65 years	0.0764	84,869	6,483	409,016	1,721,472	20.3
65-70 years	0.1109	78,386	8,695	371,131	1,312,456	16.7
70-75 years	0.1641	69,691	11,437	320,857	941,325	13.5
75-80 years	0.2360	58,254	13,746	257,743	620,468	10.7
80-85 years	0.3460	44,508	15,400	184,248	362,725	8.1
85 years and over	1.0000	29,108	29,108	178,477	178,477	6.1
Male						
0-1 year	0.0123	100,000	1,230	98,948	7,104,901	71.0
1-5 years	0.0025	98,770	245	394,512	7,005,953	70.9
5-10 years	0.0015	98,525	153	492,208	6,611,441	67.1
10-15 years	0.0017	98,372	164	491,561	6,119,233	62.2
15-20 years	0.0058	98,208	566	489,773	5,627,672	57.3
20-25 years	0.0081	97,642	791	486,275	5,137,899	52.6
25-30 years	0.0084	96,851	809	482,210	4,651,624	48.0
30-35 years	0.0091	96,042	872	478,056	4,169,414	43.4
35-40 years	0.0111	95,170	1,052	473,353	3,691,358	38.8
40-45 years	0.0160	94,118	1,502	467,094	3,218,005	34.2
45-50 years	0.0260	92,616	2,407	457,510	2,750,911	29.7
50-55 years	0.0423	90,209	3,811	442,124	2,293,401	25.4
55-60 years	0.0669	86,398	5,783	418,346	1,851,277	21.4
60-65 years	0.1004	80,615	8,092	383,890	1,432,931	17.8
65-70 years	0.1474	72,523	10,691	336,890	1,049,041	14.5
70-75 years	0.2174	61,832	13,442	276,322	712,151	11.5
75-80 years	0.3085	48,390	14,929	204,760	435,829	9.0
80-85 years	0.4275	33,461	14,306	130,716	231,069	6.9
85 years and over	1.0000	19,155	19,155	100,353	100,353	5.2
Female						
0-1 year	0.0099	100,000	994	99,152	7,813,762	78.1
1-5 years	0.0019	99,006	188	395,574	7,714,610	77.9
5-10 years	0.0011	98,818	109	493,793	7,319,036	74.1
10-15 years	0.0010	98,709	98	493,333	6,825,243	69.1
15-20 years	0.0023	98,611	227	492,523	6,331,910	64.2
20-25 years	0.0027	98,384	270	491,257	5,839,387	59.4
25-30 years	0.0031	98,114	306	489,821	5,348,130	54.5
30-35 years	0.0038	97,808	373	488,151	4,858,309	49.7
35-40 years	0.0055	97,435	541	485,918	4,370,158	44.9
40-45 years	0.0088	96,894	852	482,498	3,884,240	40.1

Table 3. Abridged life tables by race and sex: United States, 1983—Con.

[For explanation of the columns of the life tables, see section 6 of *Vital Statistics of the United States*, 1980, Volume II]

Age interval	Proportion dying	Of 100,000 born alive		Stationary population		Average remaining lifetime
	Proportion of persons alive at beginning of age interval dying during interval (2)	Number living at beginning of age interval (3)	Number dying during age interval (4)	In the age interval (5)	In this and all subsequent age intervals (6)	Average number of years of life remaining at beginning of age interval (7)
Period of life between two exact ages stated in years (1)	$nq_x$	$l_x$	$nd_x$	$nL_x$	$T_x$	$e_x$
$x$ to $x+n$						
<b>Female—Con.</b>						
45–50 years	0.0146	96,042	1,399	476,966	3,401,742	35.4
50–55 years	0.0236	94,643	2,229	467,988	2,924,776	30.9
55–60 years	0.0360	92,414	3,331	454,233	2,456,788	26.6
60–65 years	0.0550	89,083	4,903	433,871	2,002,555	22.5
65–70 years	0.0804	84,180	6,765	404,873	1,568,684	18.6
70–75 years	0.1232	77,415	9,534	364,464	1,163,811	15.0
75–80 years	0.1867	67,881	12,676	309,211	799,347	11.8
80–85 years	0.2986	55,205	16,486	235,961	490,136	8.9
85 years and over	1.0000	38,719	38,719	254,175	254,175	6.6
<b>White</b>						
0–1 year	0.0097	100,000	973	99,166	7,521,480	75.2
1–5 years	0.0020	99,027	199	395,642	7,422,314	75.0
5–10 years	0.0012	98,828	123	493,806	7,026,672	71.1
10–15 years	0.0013	98,705	127	493,283	6,532,866	66.2
15–20 years	0.0041	98,578	403	491,973	6,039,583	61.3
20–25 years	0.0051	98,175	504	489,631	5,547,610	56.5
25–30 years	0.0052	97,671	506	487,077	5,057,979	51.8
30–35 years	0.0056	97,165	542	484,500	4,570,902	47.0
35–40 years	0.0072	96,623	699	481,468	4,086,402	42.3
40–45 years	0.0109	95,924	1,045	477,200	3,604,934	37.6
45–50 years	0.0181	94,879	1,716	470,441	3,127,734	33.0
50–55 years	0.0303	93,163	2,819	459,239	2,657,293	28.5
55–60 years	0.0478	90,344	4,316	441,589	2,198,054	24.3
60–65 years	0.0729	86,028	6,274	415,352	1,756,465	20.4
65–70 years	0.1083	79,754	8,637	378,168	1,341,113	16.8
70–75 years	0.1607	71,117	11,431	328,061	962,945	13.5
75–80 years	0.2349	59,686	14,021	264,310	634,884	10.6
80–85 years	0.3443	45,665	15,720	189,283	370,574	8.1
85 years and over	1.0000	29,945	29,945	181,291	181,291	6.1
<b>White, male</b>						
0–1 year	0.0108	100,000	1,079	99,076	7,167,913	71.7
1–5 years	0.0023	98,921	224	395,166	7,068,837	71.5
5–10 years	0.0015	98,697	145	493,089	6,673,671	67.6
10–15 years	0.0016	98,552	158	492,478	6,180,582	62.7
15–20 years	0.0058	98,394	573	490,681	5,688,104	57.8
20–25 years	0.0077	97,821	754	487,245	5,197,423	53.1
25–30 years	0.0076	97,067	734	483,464	4,710,178	48.5
30–35 years	0.0079	96,333	759	479,786	4,226,714	43.9
35–40 years	0.0096	95,574	922	475,683	3,746,928	39.2
40–45 years	0.0141	94,652	1,330	470,179	3,271,245	34.6
45–50 years	0.0233	93,322	2,172	461,615	2,801,066	30.0
50–55 years	0.0393	91,150	3,580	447,409	2,339,451	25.7
55–60 years	0.0634	87,570	5,548	424,819	1,892,042	21.6
60–65 years	0.0961	82,022	7,886	391,482	1,467,223	17.9
65–70 years	0.1447	74,136	10,725	344,951	1,075,741	14.5
70–75 years	0.2144	63,411	13,593	283,920	730,790	11.5
75–80 years	0.3093	49,818	15,408	210,758	446,870	9.0
80–85 years	0.4270	34,410	14,692	134,473	236,112	6.9
85 years and over	1.0000	19,718	19,718	101,639	101,639	5.2

Table 3. Abridged life tables by race and sex: United States, 1983—Con.

[For explanation of the columns of the life tables, see section 6 of *Vital Statistics of the United States, 1980, Volume II*]

Age interval	Proportion dying	Of 100,000 born alive		Stationary population		Average remaining lifetime
	Proportion of persons alive at beginning of age interval dying during interval (2)	Number living at beginning of age interval (3)	Number dying during age interval (4)	In the age interval (5)	In this and all subsequent age intervals (6)	Average number of years of life remaining at beginning of age interval (7)
Period of life between two exact ages stated in years (1)						
x to x + n	$nq_x$	$l_x$	$n d_x$	$nL_x$	$T_x$	$e_x$
White, female						
0-1 year	0.0086	100,000	860	99,262	7,868,436	78.7
1-5 years	0.0017	99,140	172	396,147	7,769,174	78.4
5-10 years	0.0010	98,968	102	494,564	7,373,027	74.5
10-15 years	0.0009	98,866	94	494,131	6,878,463	69.6
15-20 years	0.0023	98,772	226	493,330	6,384,332	64.6
20-25 years	0.0025	98,546	248	492,115	5,891,002	59.8
25-30 years	0.0028	98,298	271	490,823	5,398,887	54.9
30-35 years	0.0033	98,027	321	489,369	4,908,064	50.1
35-40 years	0.0048	97,706	473	487,429	4,418,695	45.2
40-45 years	0.0078	97,233	759	484,412	3,931,266	40.4
45-50 years	0.0130	96,474	1,256	479,470	3,446,854	35.7
50-55 years	0.0216	95,218	2,057	471,285	2,967,384	31.2
55-60 years	0.0335	93,161	3,124	458,478	2,496,099	26.8
60-65 years	0.0521	90,037	4,689	439,178	2,037,621	22.6
65-70 years	0.0776	85,348	6,625	411,093	1,598,443	18.7
70-75 years	0.1195	78,723	9,406	371,372	1,187,350	15.1
75-80 years	0.1848	69,317	12,811	316,178	815,978	11.8
80-85 years	0.2968	56,506	16,770	241,851	499,800	8.8
85 years and over	1.0000	39,736	39,736	257,949	257,949	6.5
All other						
0-1 year	0.0168	100,000	1,678	98,575	7,111,076	71.1
1-5 years	0.0030	98,322	295	392,596	7,012,501	71.3
5-10 years	0.0017	98,027	165	489,679	6,619,905	67.5
10-15 years	0.0016	97,862	155	488,985	6,130,226	62.6
15-20 years	0.0039	97,707	383	487,684	5,641,241	57.7
20-25 years	0.0070	97,324	680	485,016	5,153,557	53.0
25-30 years	0.0087	96,644	845	481,168	4,668,541	48.3
30-35 years	0.0113	95,799	1,078	476,393	4,187,373	43.7
35-40 years	0.0148	94,721	1,405	470,283	3,710,980	39.2
40-45 years	0.0214	93,316	1,995	461,894	3,240,697	34.7
45-50 years	0.0337	91,321	3,078	449,377	2,778,803	30.4
50-55 years	0.0488	88,243	4,311	430,979	2,329,426	26.4
55-60 years	0.0734	83,932	6,160	404,891	1,898,447	22.6
60-65 years	0.1056	77,772	8,209	369,019	1,493,556	19.2
65-70 years	0.1334	69,563	9,282	325,180	1,124,537	16.2
70-75 years	0.1944	60,281	11,717	272,668	799,357	13.3
75-80 years	0.2455	48,564	11,922	213,157	526,689	10.8
80-85 years	0.3651	36,642	13,380	149,516	313,532	8.6
85 years and over	1.0000	23,262	23,262	164,016	164,016	7.1
All other, male						
0-1 year	0.0183	100,000	1,832	98,436	6,715,783	67.2
1-5 years	0.0034	98,168	336	391,895	6,617,347	67.4
5-10 years	0.0019	97,832	186	488,647	6,225,452	63.6
10-15 years	0.0020	97,646	191	487,848	5,736,805	58.8
15-20 years	0.0055	97,455	535	486,104	5,248,957	53.9
20-25 years	0.0103	96,920	996	482,261	4,762,853	49.1
25-30 years	0.0129	95,924	1,239	476,600	4,280,592	44.6
30-35 years	0.0165	94,685	1,565	469,617	3,803,992	40.2
35-40 years	0.0208	93,120	1,939	460,974	3,334,375	35.8
40-45 years	0.0291	91,181	2,651	449,646	2,873,401	31.5

Table 3. Abridged life tables by race and sex: United States, 1983—Con.

[For explanation of the columns of the life tables, see section 6 of *Vital Statistics of the United States, 1980, Volume II*]

Age interval	Proportion dying	Of 100,000 born alive		Stationary population		Average remaining lifetime
	Proportion of persons alive at beginning of age interval dying during interval (2)	Number living at beginning of age interval (3)	Number dying during age interval (4)	In the age interval (5)	In this and all subsequent age intervals (6)	Average number of years of life remaining at beginning of age interval (7)
Period of life between two exact ages stated in years (1)						
x to x + n	nq <sub>x</sub>	l <sub>x</sub>	n <sub>d</sub> <sub>x</sub>	nL <sub>x</sub>	T <sub>x</sub>	e <sub>x</sub>
<b>All other, male—Con.</b>						
45–50 years	0.0451	88,530	3,993	433,254	2,423,755	27.4
50–55 years	0.0643	84,537	5,432	409,738	1,990,501	23.5
55–60 years	0.0957	79,105	7,569	377,242	1,580,763	20.0
60–65 years	0.1375	71,536	9,837	333,740	1,203,521	16.8
65–70 years	0.1721	61,699	10,618	282,315	869,781	14.1
70–75 years	0.2451	51,081	12,519	224,266	587,466	11.5
75–80 years	0.3014	38,562	11,624	163,480	363,200	9.4
80–85 years	0.4366	26,938	11,761	104,574	199,720	7.4
85 years and over	1.0000	15,177	15,177	95,146	95,146	6.3
<b>All other, female</b>						
0–1 year	0.0152	100,000	1,518	98,719	7,492,103	74.9
1–5 years	0.0026	98,482	254	393,322	7,393,384	75.1
5–10 years	0.0015	98,228	144	490,742	7,000,062	71.3
10–15 years	0.0012	98,084	117	490,157	6,509,320	66.4
15–20 years	0.0023	97,967	228	489,312	6,019,163	61.4
20–25 years	0.0039	97,739	379	487,800	5,529,851	56.6
25–30 years	0.0050	97,360	485	485,639	5,042,051	51.8
30–35 years	0.0066	96,875	644	482,848	4,556,412	47.0
35–40 years	0.0098	96,231	939	478,970	4,073,564	42.3
40–45 years	0.0148	95,292	1,407	473,182	3,594,594	37.7
45–50 years	0.0240	93,885	2,258	464,143	3,121,412	33.2
50–55 years	0.0360	91,627	3,303	450,320	2,657,269	29.0
55–60 years	0.0546	88,324	4,825	430,149	2,206,949	25.0
60–65 years	0.0790	83,499	6,595	401,700	1,776,800	21.3
65–70 years	0.1031	76,904	7,928	365,422	1,375,100	17.9
70–75 years	0.1559	68,976	10,755	318,898	1,009,678	14.6
75–80 years	0.2054	58,221	11,960	261,763	690,780	11.9
80–85 years	0.3211	46,261	14,853	194,429	429,017	9.3
85 years and over	1.0000	31,408	31,408	234,588	234,588	7.5
<b>Black</b>						
0–1 year	0.0192	100,000	1,917	98,365	6,957,951	69.6
1–5 years	0.0033	98,083	319	391,583	6,859,586	69.9
5–10 years	0.0018	97,764	172	488,343	6,468,003	66.2
10–15 years	0.0017	97,592	166	487,608	5,979,660	61.3
15–20 years	0.0040	97,426	390	486,267	5,492,052	56.4
20–25 years	0.0074	97,036	722	483,490	5,005,785	51.6
25–30 years	0.0097	96,314	938	479,309	4,522,295	47.0
30–35 years	0.0131	95,376	1,252	473,868	4,042,986	42.4
35–40 years	0.0174	94,124	1,637	466,903	3,569,118	37.9
40–45 years	0.0247	92,487	2,281	457,069	3,102,215	33.5
45–50 years	0.0384	90,206	3,460	442,884	2,645,146	29.3
50–55 years	0.0553	86,746	4,801	422,297	2,202,262	25.4
55–60 years	0.0818	81,945	6,707	393,594	1,779,965	21.7
60–65 years	0.1169	75,238	8,796	354,843	1,386,371	18.4
65–70 years	0.1444	66,442	9,592	308,744	1,031,528	15.5
70–75 years	0.2100	56,850	11,937	254,871	722,784	12.7
75–80 years	0.2627	44,913	11,798	195,099	467,913	10.4
80–85 years	0.3859	33,115	12,780	133,253	272,814	8.2
85 years and over	1.0000	20,335	20,335	139,561	139,561	6.9

Table 3. Abridged life tables by race and sex: United States, 1983—Con.

[For explanation of the columns of the life tables, see section 6 of *Vital Statistics of the United States*, 1980, Volume II]

Age interval	Proportion dying	Of 100,000 born alive		Stationary population		Average remaining lifetime
	Proportion of persons alive at beginning of age interval dying during interval (2)	Number living at beginning of age interval (3)	Number dying during age interval (4)	In the age interval (5)	In this and all subsequent age intervals (6)	Average number of years of life remaining at beginning of age interval (7)
Period of life between two exact ages stated in years (1)						
x to x + n	$nq_x$	$l_x$	$n d_x$	$nL_x$	$T_x$	$e_x$
<b>Black, male</b>						
0-1 year . . . . .	0.0210	100,000	2,105	98,193	6,544,669	65.4
1-5 years . . . . .	0.0037	97,895	361	390,744	6,446,476	65.9
5-10 years . . . . .	0.0020	97,534	195	487,130	6,055,732	62.1
10-15 years . . . . .	0.0021	97,339	202	486,282	5,568,602	57.2
15-20 years . . . . .	0.0056	97,137	546	484,493	5,082,320	52.3
20-25 years . . . . .	0.0110	96,591	1,065	480,472	4,597,827	47.6
25-30 years . . . . .	0.0145	95,526	1,382	474,285	4,117,355	43.1
30-35 years . . . . .	0.0194	94,144	1,827	466,292	3,643,070	38.7
35-40 years . . . . .	0.0248	92,317	2,290	456,112	3,176,778	34.4
40-45 years . . . . .	0.0340	90,027	3,060	442,891	2,720,666	30.2
45-50 years . . . . .	0.0523	86,967	4,546	424,087	2,277,775	26.2
50-55 years . . . . .	0.0728	82,421	6,001	397,747	1,853,688	22.5
55-60 years . . . . .	0.1064	76,420	8,128	362,397	1,455,941	19.1
60-65 years . . . . .	0.1517	68,292	10,359	316,132	1,093,544	16.0
65-70 years . . . . .	0.1867	57,933	10,816	262,903	777,412	13.4
70-75 years . . . . .	0.2656	47,117	12,514	204,314	514,509	10.9
75-80 years . . . . .	0.3236	34,603	11,199	144,575	310,195	9.0
80-85 years . . . . .	0.4597	23,404	10,760	89,283	165,620	7.1
85 years and over . . . . .	1.0000	12,644	12,644	76,337	76,337	6.0
<b>Black, female</b>						
0-1 year . . . . .	0.0172	100,000	1,723	98,543	7,359,166	73.6
1-5 years . . . . .	0.0028	98,277	276	392,445	7,260,623	73.9
5-10 years . . . . .	0.0015	98,001	150	489,586	6,868,178	70.1
10-15 years . . . . .	0.0013	97,851	125	488,971	6,378,592	65.2
15-20 years . . . . .	0.0024	97,726	233	488,099	5,889,621	60.3
20-25 years . . . . .	0.0041	97,493	404	486,519	5,401,522	55.4
25-30 years . . . . .	0.0055	97,089	535	484,173	4,915,003	50.6
30-35 years . . . . .	0.0077	96,554	742	481,015	4,430,830	45.9
35-40 years . . . . .	0.0112	95,812	1,073	476,558	3,949,815	41.2
40-45 years . . . . .	0.0168	94,739	1,592	469,985	3,473,257	36.7
45-50 years . . . . .	0.0268	93,147	2,496	459,889	3,003,272	32.2
50-55 years . . . . .	0.0408	90,651	3,702	444,480	2,543,383	28.1
55-60 years . . . . .	0.0609	86,949	5,296	422,123	2,098,903	24.1
60-65 years . . . . .	0.0882	81,653	7,203	390,945	1,676,780	20.5
65-70 years . . . . .	0.1119	74,450	8,332	352,123	1,285,835	17.3
70-75 years . . . . .	0.1691	66,118	11,179	303,501	933,712	14.1
75-80 years . . . . .	0.2206	54,939	12,120	244,881	630,211	11.5
80-85 years . . . . .	0.3421	42,819	14,649	177,592	385,330	9.0
85 years and over . . . . .	1.0000	28,170	28,170	207,738	207,738	7.4



**Table 4. Deaths under 1 year and infant mortality rates for the 10 leading causes of infant death: United States, 1983**

[Rates per 100,000 live births]

<i>Rank order</i> <sup>1</sup>	<i>Cause of death</i> (Ninth Revision International Classification of Diseases, 1975)	<i>Number</i>	<i>Rate</i>
...	All causes . . . . .	40,627	1,116.5
1	Congenital anomalies . . . . . 740-759	8,732	240.0
2	Sudden infant death syndrome . . . . . 798.0	5,305	145.8
3	Respiratory distress syndrome . . . . . 769	3,682	101.2
4	Disorders relating to short gestation and unspecified low birthweight. . . . . 765	3,332	91.6
5	Newborn affected by maternal complications of pregnancy . . . . . 761	1,452	39.9
6	Intrauterine hypoxia and birth asphyxia. . . . . 768	1,199	32.9
7	Accidents and adverse effects . . . . . E800-E949	956	26.3
8	Infections specific to the perinatal period. . . . . 771	870	23.9
9	Newborn affected by complications of placenta, cord, and membranes. . . . . 762	869	23.9
10	Pneumonia and influenza . . . . . 480-487	769	21.1
...	All other causes . . . . . Residual	13,461	369.9

<sup>1</sup>Rank based on number of deaths; see Technical notes.

Table 5. Age-specific and age-adjusted death rates for 15 leading causes and selected components: United States, 1979 and 1982-83

[Rates per 100,000 population in specified group]

Cause of death (Ninth Revision International Classification of Diseases, 1975)	Year	Age												Age-adjusted rate <sup>2</sup>
		All ages <sup>1</sup>	Under 1 year	1-4 years	5-14 years	15-24 years	25-34 years	35-44 years	45-54 years	55-64 years	65-74 years	75-84 years	85 years and over	
All causes . . . . .	1983	862.8	1,107.3	55.9	26.9	96.0	121.4	201.9	535.7	1,299.5	2,874.3	6,441.5	15,168.0	550.5
	1982	852.0	1,164.2	57.6	28.3	101.0	125.2	207.4	549.7	1,297.9	2,885.2	6,329.8	15,048.3	553.8
	1979	852.2	1,332.9	64.2	31.5	114.8	133.0	229.8	589.7	1,338.0	2,929.0	6,496.6	14,962.4	577.0
Diseases of heart . . . . . 390-398,402,404-429	1983	329.2	26.0	2.5	0.9	2.6	8.3	39.3	164.7	463.0	1,139.2	2,816.3	7,335.5	188.8
	1982	326.0	21.1	2.3	1.1	2.7	8.2	40.7	169.4	468.7	1,156.4	2,801.4	7,341.8	190.5
	1979	326.5	20.2	2.1	0.8	2.6	8.4	45.3	184.6	499.0	1,199.8	2,925.2	7,310.9	199.5
Rheumatic fever and rheumatic heart disease . . . . . 390-398	1983	2.9	0.2	0.0	0.0	0.1	0.4	1.0	2.9	6.2	12.1	20.2	25.3	2.1
	1982	3.0	0.2	0.1	0.0	0.2	0.4	0.9	2.6	6.7	13.9	20.1	24.1	2.2
	1979	3.5	0.1	0.0	0.0	0.2	0.4	1.4	3.9	8.0	16.0	20.6	25.2	2.6
Hypertensive heart disease . . . . . 402	1983	9.0	0.0	0.0	-	0.0	0.3	1.7	6.2	15.4	32.5	72.0	160.7	5.5
	1982	9.0	0.1	0.0	0.0	0.0	0.3	1.6	6.4	15.0	32.6	74.5	164.5	5.6
	1979	9.3	0.0	-	0.0	0.0	0.4	1.9	7.0	16.2	35.7	79.6	170.3	6.0
Hypertensive heart and renal disease . . . . . 404	1983	1.3	-	-	-	0.0	0.0	0.1	0.3	1.1	3.7	12.8	39.5	0.6
	1982	1.3	0.0	-	-	0.0	0.1	0.1	0.3	1.1	3.7	13.0	40.7	0.7
	1979	1.6	-	-	0.0	0.0	0.0	0.2	0.4	1.4	5.1	16.8	50.9	0.9
Ischemic heart disease . . . . . 410-414	1983	236.1	1.0	0.2	0.1	0.3	3.1	24.8	116.3	336.5	842.5	2,049.8	5,124.3	135.2
	1982	238.5	0.8	0.2	0.1	0.3	3.3	26.5	122.8	348.2	871.9	2,073.7	5,228.5	139.3
	1979	245.5	0.7	0.1	0.0	0.3	3.6	30.1	136.1	381.0	926.6	2,224.8	5,376.1	149.7
Acute myocardial infarction . . . . . 410	1983	122.3	0.7	0.1	0.1	0.2	2.0	15.9	76.1	214.5	503.9	1,036.5	1,779.5	76.1
	1982	125.6	0.5	0.1	0.1	0.2	2.1	17.5	81.3	225.7	529.8	1,052.5	1,832.8	79.5
	1979	133.8	0.4	0.0	0.0	0.2	2.4	21.1	94.6	258.9	577.2	1,135.2	1,916.3	88.2
Other acute and subacute forms of ischemic heart disease . . . . . 411	1983	1.7	0.0	0.0	0.0	0.0	0.0	0.4	1.8	3.6	6.6	11.5	25.6	1.1
	1982	1.8	-	-	-	0.0	0.1	0.5	1.8	4.0	6.9	11.5	24.3	1.2
	1979	2.1	0.1	-	-	0.0	0.1	0.5	2.0	4.8	8.2	15.3	30.2	1.5
Angina pectoris . . . . . 413	1983	0.3	-	-	-	0.0	0.0	0.0	0.2	0.4	1.1	3.0	6.5	0.2
	1982	0.3	-	-	-	0.0	0.0	0.0	0.2	0.4	1.0	2.7	4.1	0.2
	1979	0.2	0.0	-	-	0.0	0.0	0.1	0.1	0.3	0.9	2.1	4.6	0.1
Old myocardial infarction and other forms of chronic ischemic heart disease . . . . . 412,414	1983	111.7	0.3	0.1	0.1	0.1	1.1	8.5	38.2	118.0	330.8	998.8	3,312.7	57.9
	1982	110.9	0.3	0.1	0.1	0.1	1.1	8.6	39.5	118.1	334.2	1,007.0	3,367.3	58.5
	1979	109.4	0.2	0.0	0.0	0.1	1.0	8.4	39.3	117.0	340.3	1,072.2	3,424.9	59.9
Other diseases of endocardium . . . . . 424	1983	3.6	0.7	0.1	0.0	0.1	0.2	0.6	1.5	4.1	12.2	34.5	73.6	2.0
	1982	3.4	0.4	0.1	0.0	0.1	0.3	0.5	1.6	4.2	11.5	32.9	65.4	2.0
	1979	2.9	0.4	0.0	0.0	0.1	0.2	0.6	1.5	4.3	11.6	27.5	47.1	1.8
All other forms of heart disease . . . . . 415-423,425-429	1983	76.3	24.1	2.2	0.7	2.1	4.2	11.1	37.5	99.7	236.2	626.9	1,912.2	43.2
	1982	70.8	19.6	2.0	0.8	2.0	3.9	11.1	35.6	93.5	222.8	587.1	1,818.5	40.8
	1979	63.7	19.0	2.0	0.7	1.9	3.7	11.0	35.7	88.1	204.8	555.9	1,641.4	38.4
Malignant neoplasms, including neoplasms of lymphatic and hematopoietic tissues . . . . . 140-208	1983	189.3	3.6	4.7	3.9	5.6	12.8	45.6	172.2	443.0	829.3	1,254.7	1,583.4	132.6
	1982	187.2	3.7	4.6	4.1	5.9	13.2	46.2	176.0	439.7	824.9	1,238.7	1,598.6	132.5
	1979	179.6	3.4	4.6	4.4	6.1	13.3	48.3	181.4	429.4	800.0	1,207.6	1,522.9	130.8

Malignant neoplasms of lip, oral cavity, and pharynx. . . . . 140-149	1983	3.6	0.0	0.0	0.0	0.1	0.2	1.0	4.6	11.2	15.3	17.0	22.5	2.7
	1982	3.7	0.1	-	0.0	0.1	0.1	1.0	4.9	11.2	15.5	18.1	23.1	2.8
	1979	3.8	-	0.0	0.0	0.1	0.2	1.1	5.6	11.8	16.3	18.1	23.7	3.0
Malignant neoplasms of digestive organs and peritoneum . . . . . 150-159	1983	48.7	0.3	0.2	0.1	0.3	1.6	7.6	34.3	100.1	213.5	376.4	543.4	31.8
	1982	48.6	0.5	0.2	0.1	0.4	1.7	7.7	34.7	100.9	216.6	376.1	550.3	32.2
	1979	48.6	0.3	0.1	0.1	0.3	1.8	8.2	36.3	103.9	221.9	388.7	547.8	33.1
Malignant neoplasms of respiratory and intrathoracic organs . . . . . 160-165	1983	51.3	0.2	0.1	0.1	0.1	0.7	8.9	54.6	151.8	258.7	278.3	191.6	37.9
	1982	50.2	0.2	0.0	0.1	0.1	0.8	8.8	56.0	150.8	254.6	263.5	196.0	37.5
	1979	45.9	0.0	0.0	0.0	0.1	0.8	9.8	56.0	140.9	231.0	238.1	170.3	35.2
Malignant neoplasm of breast. . . . . 174-175	1983	16.3	0.0	-	0.0	0.1	1.6	8.5	23.7	43.8	59.7	82.9	124.9	12.4
	1982	16.3	0.1	0.0	0.0	0.0	1.7	8.8	24.4	43.0	59.3	83.5	126.1	12.5
	1979	15.4	-	-	-	0.0	1.6	9.1	25.3	41.3	56.6	77.4	114.2	12.2
Malignant neoplasms of genital organs . . . . . 179-187	1983	20.8	0.1	0.1	0.1	0.5	1.5	4.0	12.5	35.3	88.6	177.0	256.3	13.3
	1982	20.5	0.1	0.0	0.0	0.4	1.6	3.9	13.0	35.4	87.3	175.9	257.7	13.2
	1979	20.2	0.0	0.0	0.1	0.5	1.6	4.7	14.5	35.6	88.3	176.0	252.0	13.6
Malignant neoplasms of urinary organs . . . . . 188-189	1983	7.9	0.1	0.3	0.1	0.1	0.2	1.0	5.0	15.3	34.3	63.6	98.1	5.1
	1982	8.0	0.1	0.2	0.1	0.1	0.2	1.1	5.6	15.1	35.1	63.6	100.7	5.2
	1979	7.8	0.2	0.2	0.2	0.1	0.2	1.1	5.7	15.1	34.6	65.6	97.0	5.2
Malignant neoplasms of all other and unspecified sites . . . . . 170-173,190-199	1983	23.4	1.7	2.2	1.7	2.1	3.7	8.9	23.9	53.7	91.3	139.1	191.3	17.2
	1982	22.9	1.7	2.4	1.7	2.2	3.7	8.9	23.6	52.4	90.0	137.5	188.6	17.0
	1979	21.6	1.7	2.2	1.7	2.3	3.7	8.6	24.0	49.8	86.4	130.2	175.8	16.4
Leukemia. . . . . 204-208	1983	7.2	1.0	1.7	1.5	1.4	1.6	2.7	5.2	11.3	25.5	49.2	77.8	5.1
	1982	7.2	0.9	1.5	1.7	1.7	1.6	2.7	5.1	11.0	25.4	51.2	78.7	5.2
	1979	7.1	1.0	1.7	1.9	1.7	1.7	2.7	5.5	11.3	25.4	50.3	76.1	5.3
Other malignant neoplasms of lymphatic and hematopoietic tissues. . . . . 200-203	1983	10.0	0.1	0.2	0.4	1.0	1.7	3.1	8.3	20.5	42.3	71.0	77.4	7.1
	1982	9.8	0.1	0.2	0.4	0.9	1.7	3.3	8.8	19.9	41.2	69.2	77.3	7.0
	1979	9.1	0.1	0.3	0.4	0.9	1.8	3.0	8.6	19.5	39.5	63.1	66.0	6.7
Cerebrovascular diseases. . . 430-438	1983	66.5	3.9	0.4	0.3	0.8	2.2	7.3	22.8	57.6	182.2	652.7	1,912.5	34.4
	1982	68.0	3.7	0.3	0.3	0.7	2.4	7.7	23.7	58.9	193.5	675.1	2,000.8	35.8
	1979	75.5	4.6	0.3	0.3	0.9	2.6	9.1	26.4	68.1	226.9	793.8	2,264.9	41.6
Accidents and adverse effects . . . . . E800-E949	1983	39.5	26.1	21.8	12.7	48.5	39.0	31.7	32.6	36.6	50.5	106.0	257.5	35.3
	1982	40.6	28.1	22.5	13.2	51.2	40.5	32.7	34.2	37.3	50.9	103.9	255.9	36.6
	1979	46.9	31.5	26.5	16.1	62.6	45.7	38.4	39.4	43.5	58.8	117.8	276.0	42.9
Motor vehicle accidents. . . . . E810-E825	1983	19.0	5.2	7.5	6.6	35.1	23.4	16.8	15.3	14.7	17.1	26.0	25.0	18.5
	1982	19.8	5.8	7.9	6.8	36.9	24.1	17.7	15.7	15.2	17.5	25.2	23.7	19.3
	1979	23.8	6.5	9.8	8.3	45.6	28.8	21.0	18.6	18.2	20.7	28.7	24.4	23.2
All other accidents and adverse effects . . . E800-E807,E826-E949	1983	20.5	20.9	14.3	6.1	13.4	15.6	15.0	17.3	22.0	33.4	80.1	232.5	16.8
	1982	20.8	22.4	14.5	6.5	14.4	16.4	15.0	18.4	22.1	33.4	78.7	232.2	17.3
	1979	23.1	25.0	16.7	7.7	17.0	16.9	17.4	20.8	25.2	38.1	89.2	251.6	19.6

See footnotes at end of table.

**Table 5. Age-specific and age-adjusted death rates for 15 leading causes and selected components: United States, 1979 and 1982-83—Con.**

[Rates per 100,000 population in specified group]

Cause of death (Ninth Revision International Classification of Diseases, 1975)	Year	Age												Age-adjusted rate <sup>2</sup>
		All ages <sup>1</sup>	Under 1 year	1-4 years	5-14 years	15-24 years	25-34 years	35-44 years	45-54 years	55-64 years	65-74 years	75-84 years	85 years and over	
Chronic obstructive pulmonary diseases and allied conditions . . . . . 490-496	1983	28.3	1.4	0.4	0.3	0.5	0.6	1.7	10.0	44.9	139.8	260.7	309.2	17.4
	1982	25.8	1.7	0.4	0.3	0.5	0.6	1.6	9.5	41.7	131.2	236.0	278.0	16.2
	1979	22.2	1.9	0.5	0.2	0.3	0.5	1.7	9.3	40.2	117.0	200.6	230.2	14.6
Pneumonia and influenza . . . . . 480-487	1983	23.9	21.0	1.7	0.4	0.7	1.4	2.8	6.7	16.8	51.1	205.8	859.9	11.8
	1982	21.1	20.8	1.7	0.4	0.7	1.4	2.8	6.5	16.4	47.6	183.4	747.8	10.9
	1979	20.1	33.0	2.0	0.6	0.8	1.5	3.2	7.1	16.4	47.8	184.2	694.9	11.2
Diabetes mellitus . . . . . 250	1983	15.5	0.1	0.1	0.1	0.3	1.5	3.6	9.3	26.5	61.7	130.0	207.6	9.9
	1982	14.9	0.3	0.1	0.1	0.3	1.4	3.3	9.2	25.5	60.1	125.4	212.1	9.6
	1979	14.8	0.1	0.1	0.1	0.4	1.4	3.6	9.0	25.8	61.3	130.3	211.6	9.8
Suicide . . . . . E950-E959	1983	12.1	...	...	0.6	11.9	15.8	14.6	16.2	16.5	17.7	22.3	19.0	11.4
	1982	12.2	...	...	0.6	12.1	16.0	15.3	16.6	16.9	17.4	20.3	17.6	11.6
	1979	12.1	...	...	0.4	12.4	16.3	15.4	16.5	16.6	17.8	20.8	17.9	11.7
Chronic liver disease and cirrhosis . . . . . 571	1983	11.7	0.6	0.1	0.0	0.2	3.0	10.0	24.3	36.2	38.5	31.8	18.5	10.2
	1982	11.9	0.9	0.1	0.0	0.2	3.1	10.7	25.4	36.9	40.1	31.1	17.9	10.5
	1979	13.2	1.0	0.1	0.0	0.2	3.4	13.9	31.0	40.9	41.8	28.3	18.1	12.0
Atherosclerosis . . . . . 440	1983	11.3	0.0	0.0	0.0	0.0	0.0	0.1	1.1	4.5	19.3	98.5	530.8	4.6
	1982	11.6	0.0	0.0	0.0	0.0	0.0	0.1	1.0	4.5	20.6	102.9	563.0	4.8
	1979	12.8	0.1	-	-	0.0	0.0	0.1	0.9	4.8	24.4	125.3	649.1	5.7
Homicide and legal intervention . . . . . E960-E978	1983	8.6	5.3	2.3	1.0	12.4	15.4	11.8	8.7	6.1	4.3	4.9	5.0	8.6
	1982	9.6	6.7	2.7	1.2	13.7	17.3	13.3	10.2	6.5	4.9	4.7	5.8	9.7
	1979	10.0	5.0	2.5	1.1	14.5	18.2	14.3	10.8	7.0	5.4	4.8	5.0	10.2
Certain conditions originating in the perinatal period . . . . . 760-779	1983	8.3	522.1	0.8	0.0	0.0	0.0	0.0	0.0	0.0	0.0	0.0	0.0	( <sup>3</sup> )
	1982	9.0	568.0	0.6	0.0	0.0	0.0	0.0	0.0	0.0	0.0	-	-	( <sup>3</sup> )
	1979	10.4	680.7	0.6	0.0	0.0	0.0	0.0	0.0	0.0	0.0	0.0	0.0	( <sup>3</sup> )
Nephritis, nephrotic syndrome, and nephrosis . . . . . 580-589	1983	8.1	6.3	0.1	0.1	0.2	0.6	1.2	3.2	9.2	25.5	74.6	186.6	4.6
	1982	7.8	7.1	0.2	0.1	0.2	0.6	1.3	3.1	9.3	25.8	69.7	182.8	4.5
	1979	7.0	6.4	0.2	0.2	0.3	0.7	1.5	3.7	8.5	23.7	64.7	155.2	4.3
Septicemia . . . . . 038	1983	5.7	8.3	0.6	0.1	0.2	0.4	0.9	2.7	7.5	17.8	48.1	124.5	3.4
	1982	5.0	7.5	0.6	0.1	0.2	0.4	0.9	2.5	6.8	15.8	41.1	106.9	3.0
	1979	3.6	7.6	0.5	0.1	0.2	0.4	0.8	2.2	4.9	12.4	29.7	70.3	2.3
Congenital anomalies . . . . . 740-759	1983	5.6	238.0	6.5	1.4	1.4	1.1	1.2	1.5	2.0	2.6	4.0	5.9	( <sup>3</sup> )
	1982	5.9	247.8	7.5	1.6	1.3	1.2	1.2	1.5	2.0	2.7	4.0	4.5	( <sup>3</sup> )
	1979	6.0	260.4	8.1	1.6	1.4	1.2	1.4	1.8	2.1	2.7	3.4	5.2	( <sup>3</sup> )

<sup>1</sup>Figures for age not stated included in All ages but not distributed among age groups.  
<sup>2</sup>For method of computation, see Technical notes.  
<sup>3</sup>Because deaths from these causes occur mainly among infants, age-adjusted rates are not shown.

Table 6. Deaths from 72 selected causes by age: United States, 1983

<i>Cause of death</i> (Ninth Revision International Classification of Diseases, 1975)	<i>All ages</i>	<i>Under 1 year</i>	<i>1-4 years</i>	<i>5-14 years</i>	<i>15-24 years</i>	<i>25-34 years</i>	<i>35-44 years</i>	<i>45-54 years</i>	<i>55-64 years</i>	<i>65-74 years</i>	<i>75-84 years</i>	<i>85 years and over</i>	<i>Not stated</i>
All causes . . . . .	2,019,201	40,627	7,801	9,143	39,082	48,782	59,349	119,893	288,940	474,380	541,218	389,363	623
Shigellosis and amebiasis . . . . . 004,006	30	-	4	1	-	2	-	4	5	6	5	3	-
Certain other intestinal infections . . . . . 007-009	354	131	12	4	6	6	8	10	18	32	65	62	-
Tuberculosis . . . . . 010-018	1,779	1	3	4	18	74	107	198	306	436	417	212	3
Tuberculosis of respiratory system . . . . . 010-012	1,418	1	-	2	12	42	79	168	244	354	339	176	1
Other tuberculosis . . . . . 013-018	361	-	3	2	6	32	28	30	62	82	78	36	2
Whooping cough . . . . . 033	5	5	-	-	-	-	-	-	-	-	-	-	-
Streptococcal sore throat, scarlatina, and erysipelas . . . . . 034-035	6	-	-	-	-	-	-	-	1	1	2	2	-
Meningococcal infection . . . . . 036	299	62	83	30	26	14	10	15	20	17	16	6	-
Septicemia . . . . . 038	13,394	303	81	34	86	165	271	604	1,675	2,930	4,045	3,196	4
Acute poliomyelitis . . . . . 045	-	-	-	-	-	-	-	-	-	-	-	-	-
Measles . . . . . 055	4	-	1	2	-	1	-	-	-	-	-	-	-
Viral hepatitis . . . . . 070	863	20	8	11	73	92	76	103	161	186	101	32	-
Syphilis . . . . . 090-097	121	7	-	1	-	6	1	6	11	36	39	14	-
All other infectious and parasitic diseases . . . . . 001-003, 005,020-032,037,039-041, 046-054,056-066,071-088,098-139	4,969	209	81	104	166	421	439	482	796	1,005	852	414	-
Malignant neoplasms, including neoplasms of lymphatic and hematopoietic tissues . . . . . 140-208	442,986	132	654	1,318	2,293	5,158	13,412	38,535	98,495	136,863	105,418	40,645	63
Malignant neoplasms of lip, oral cavity, and pharynx . . . . . 140-149	8,486	1	1	11	28	76	305	1,028	2,493	2,531	1,430	578	4
Malignant neoplasms of digestive organs and peritoneum . . . . . 150-159	113,864	11	24	32	136	662	2,227	7,684	22,252	35,242	31,626	13,950	18
Malignant neoplasms of respiratory and intrathoracic organs . . . . . 160-165	119,962	9	9	18	56	277	2,604	12,223	33,752	42,695	23,386	4,918	15
Malignant neoplasm of breast . . . . . 174-175	38,247	1	-	7	23	654	2,491	5,305	9,735	9,860	6,964	3,205	2
Malignant neoplasms of genital organs . . . . . 179-187	48,709	4	10	19	185	589	1,183	2,790	7,843	14,623	14,875	6,580	8
Malignant neoplasms of urinary organs . . . . . 188-189	18,555	4	37	41	37	79	295	1,130	3,411	5,656	5,345	2,518	2
Malignant neoplasms of all other and unspecified sites . . . . . 170-173,190-199	54,852	63	308	563	843	1,502	2,618	5,338	11,941	15,069	11,688	4,911	8
Leukemia . . . . . 204-208	16,820	37	236	507	586	646	786	1,174	2,507	4,203	4,136	1,998	4
Other malignant neoplasms of lymphatic and hematopoietic tissues . . . . . 200-203	23,491	2	29	120	399	673	903	1,863	4,561	6,984	5,968	1,987	2
Benign neoplasms, carcinoma in situ, and neoplasms of uncertain behavior and of unspecified nature . . . . . 210-239	6,483	53	54	90	120	178	269	448	960	1,568	1,800	941	2
Diabetes mellitus . . . . . 250	36,246	4	9	38	129	584	1,064	2,078	5,900	10,185	10,923	5,328	4
Nutritional deficiencies . . . . . 260-269	2,656	34	5	5	7	12	23	45	135	370	820	1,198	2
Anemias . . . . . 280-285	3,487	38	58	81	126	146	108	120	315	599	996	898	2
Meningitis . . . . . 320-322	1,287	318	197	39	33	50	57	80	136	172	142	60	3

**Table 6. Deaths from 72 selected causes by age: United States, 1983—Con.**

<i>Cause of death (Ninth Revision International Classification of Diseases, 1975)</i>	<i>All ages</i>	<i>Under 1 year</i>	<i>1-4 years</i>	<i>5-14 years</i>	<i>15-24 years</i>	<i>25-34 years</i>	<i>35-44 years</i>	<i>45-54 years</i>	<i>55-64 years</i>	<i>65-74 years</i>	<i>75-84 years</i>	<i>85 years and over</i>	<i>Not stated</i>
Major cardiovascular diseases . . . . . 390-448	981,098	1,119	407	432	1,505	4,430	14,136	43,238	120,497	229,348	309,086	256,737	163
Diseases of heart . . . . . 390-398,402,404-429	770,432	955	349	318	1,068	3,328	11,538	36,859	102,945	188,019	236,623	188,303	127
Rheumatic fever and rheumatic heart disease . . . . . 390-398	6,895	7	4	13	53	145	287	656	1,376	2,005	1,699	649	1
Hypertensive heart disease . . . . . 402	20,984	1	2	-	7	135	485	1,384	3,428	5,370	6,046	4,124	2
Hypertensive heart and renal disease . . . . . 404	3,073	-	-	-	4	13	29	69	253	614	1,077	1,014	-
Ischemic heart disease . . . . . 410-414	552,492	38	24	40	116	1,241	7,302	26,034	74,812	139,045	172,226	131,540	74
Acute myocardial infarction . . . . . 410	286,300	26	14	21	75	785	4,673	17,033	47,701	83,170	87,088	45,681	33
Other acute and subacute forms of ischemic heart disease . . . . . 411	4,059	1	1	1	2	18	122	407	792	1,087	970	657	1
Angina pectoris . . . . . 413	744	-	-	-	1	4	9	37	92	186	249	166	-
Old myocardial infarction and other forms of chronic ischemic heart disease . . . . . 412,414	261,389	11	9	18	38	434	2,498	8,557	26,227	54,602	83,919	85,036	40
Other diseases of endocardium . . . . . 424	8,372	24	9	15	38	90	162	328	907	2,008	2,899	1,890	2
All other forms of heart disease . . . . . 415-423,425-429	178,616	885	310	250	850	1,704	3,273	8,388	22,169	38,977	52,676	49,086	48
Hypertension with or without renal disease . . . . . 401,403	7,739	4	1	2	10	46	131	332	896	1,743	2,475	2,095	4
Cerebrovascular diseases . . . . . 430-438	155,598	144	49	91	336	878	2,152	5,101	12,817	30,068	54,840	49,095	27
Intracerebral and other intracranial hemorrhage . . . . . 431-432	19,407	94	18	31	126	317	780	1,704	3,169	4,788	5,554	2,823	3
Cerebral thrombosis and unspecified occlusion of cerebral arteries . . . . . 434.0,434.9	26,435	11	10	12	20	45	137	485	1,807	4,813	9,775	9,315	5
Cerebral embolism . . . . . 434.1	746	-	-	2	1	7	8	30	63	189	272	174	-
All other and late effects of cerebrovascular diseases . . . . . 430,433,435-438	109,010	39	21	46	189	509	1,227	2,882	7,778	20,278	39,239	36,783	19
Atherosclerosis . . . . . 440	26,371	1	1	1	3	4	32	242	992	3,191	8,274	13,626	4
Other diseases of arteries, arterioles, and capillaries . . . . . 441-448	20,958	15	7	20	88	174	283	704	2,847	6,327	6,874	3,618	1
Acute bronchitis and bronchiolitis . . . . . 466	552	87	14	4	7	7	16	20	49	70	117	161	-
Pneumonia and influenza . . . . . 480-487	55,854	769	232	130	270	577	816	1,498	3,743	8,438	17,293	22,073	15
Pneumonia . . . . . 480-486	54,423	763	224	127	263	568	802	1,479	3,676	8,255	16,893	21,358	15
Influenza . . . . . 487	1,431	6	8	3	7	9	14	19	67	183	400	715	-
Chronic obstructive pulmonary diseases and allied conditions . . . . . 490-496	66,246	52	58	93	184	236	485	2,227	9,985	23,065	21,907	7,938	16
Bronchitis, chronic and unspecified . . . . . 490-491	3,578	36	23	4	13	10	25	118	473	1,087	1,110	679	-
Emphysema . . . . . 492	13,293	6	1	-	5	14	73	468	2,225	5,002	4,253	1,241	5
Asthma . . . . . 493	3,561	5	28	78	144	186	231	384	686	836	693	290	-
Other chronic obstructive pulmonary diseases and allied conditions . . . . . 494-496	45,814	5	6	11	22	26	156	1,257	6,601	16,140	15,851	5,728	11

Ulcer of stomach and duodenum . . . . . 531-533	6,369	11	3	4	12	45	123	305	769	1,532	2,050	1,514	1
Appendicitis . . . . . 540-543	526	2	7	16	19	12	17	31	72	132	127	91	-
Hernia of abdominal cavity and intestinal obstruction without mention of hernia . . . . 550-553,560	5,094	105	28	21	24	42	72	145	409	961	1,652	1,633	2
Chronic liver disease and cirrhosis . . . . . 571	27,266	23	13	13	66	1,208	2,951	5,440	8,052	6,347	2,670	474	9
Cholelithiasis and other disorders of gallbladder . . . . . 574-575	2,989	3	3	-	6	27	42	96	288	597	1,043	884	-
Nephritis, nephrotic syndrome, and nephrosis. . . . . 580-589	18,998	232	20	28	89	244	343	720	2,046	4,208	6,272	4,791	5
Acute glomerulonephritis and nephrotic syndrome . . . . 580-581	354	8	2	3	5	7	9	11	42	81	111	75	-
Chronic glomerulonephritis, nephritis and nephropathy, not specified as acute or chronic, and renal sclerosis, unspecified . . . . . 582-583,587	1,887	6	4	4	23	43	52	79	197	412	625	440	2
Renal failure, disorders resulting from impaired renal function, and small kidney of unknown cause. . . . . 584-586,588-589	16,757	218	14	21	61	194	282	630	1,807	3,715	5,536	4,276	3
Infections of kidney . . . . . 590	2,089	3	3	1	8	24	24	57	162	348	742	717	-
Hyperplasia of prostate . . . . . 600	572	-	-	-	-	-	-	2	22	94	229	225	-
Complications of pregnancy, childbirth, and the puerperium. . . . . 630-676	290	...	...	-	114	133	43	-	...	...	...	...	...
Pregnancy with abortive outcome. . . . . 630-638	50	...	...	-	18	26	6	-	...	...	...	...	...
Other complications of pregnancy, childbirth, and the puerperium . . . . . 640-676	240	...	...	-	96	107	37	-	...	...	...	...	...
Congenital anomalies. . . . . 740-759	13,173	8,732	913	471	554	453	357	329	436	436	337	151	4
Certain conditions originating in the perinatal period. . . . . 760-779	19,310	19,157	112	13	7	7	2	3	1	2	1	1	4
Birth trauma, intrauterine hypoxia, birth asphyxia, and respiratory distress syndrome. . . . . 767-769	5,371	5,326	33	4	3	4	1	-	-	-	-	-	-
Other conditions originating in the perinatal period . . . . . 760-766,770-779	13,939	13,831	79	9	4	3	1	3	1	2	1	1	4
Symptoms, signs, and ill-defined conditions . . . . . 780-799	29,628	5,927	290	128	773	1,427	1,264	1,712	3,378	4,790	5,147	4,710	82
All other diseases. . . . . Residual	130,087	1,883	1,014	1,069	2,211	3,986	5,198	8,108	16,610	27,451	35,576	26,957	24
Accidents and adverse effects . . . . . E800-E949	92,488	956	3,043	4,321	19,756	15,669	9,327	7,297	8,147	8,336	8,908	6,610	118
Motor vehicle accidents. . . . . E810-E825	44,452	190	1,043	2,241	14,289	9,395	4,928	3,430	3,260	2,827	2,181	641	27
All other accidents and adverse effects. . . . . E800-E807,E826-E949	48,036	766	2,000	2,080	5,467	6,274	4,399	3,867	4,887	5,509	6,727	5,969	91
Suicide. . . . . E950-E959	28,295	...	...	205	4,845	6,338	4,306	3,629	3,673	2,924	1,871	489	15
Homicide and legal intervention. . . . . E960-E978	20,191	193	320	357	5,037	6,201	3,477	1,948	1,354	702	410	129	63
All other external causes. . . . . E980-E999	3,117	56	71	75	512	807	505	360	313	193	139	67	19

**Table 7. Death rates for 72 selected causes by age: United States, 1983**

[Rates per 100,000 population in specified group]

<i>Cause of death</i> (Ninth Revision International Classification of Diseases, 1975)	<i>All ages</i> <sup>1</sup>	<i>Under 1 year</i>	<i>1-4 years</i>	<i>5-14 years</i>	<i>15-24 years</i>	<i>25-34 years</i>	<i>35-44 years</i>	<i>45-54 years</i>	<i>55-64 years</i>	<i>65-74 years</i>	<i>75-84 years</i>	<i>85 years and over</i>
All causes	862.8	1,107.3	55.9	26.9	96.0	121.4	201.9	535.7	1,299.5	2,874.3	6,441.5	15,168.0
Shigellosis and amebiasis	0.0	-	0.0	0.0	-	0.0	-	0.0	0.0	0.0	0.1	0.1
Certain other intestinal infections	0.2	3.6	0.1	0.0	0.0	0.0	0.0	0.0	0.1	0.2	0.8	2.4
Tuberculosis	0.8	0.0	0.0	0.0	0.0	0.2	0.4	0.9	1.4	2.6	5.0	8.3
Tuberculosis of respiratory system	0.6	0.0	-	0.0	0.0	0.1	0.3	0.8	1.1	2.1	4.0	6.9
Other tuberculosis	0.2	-	0.0	0.0	0.0	0.1	0.1	0.1	0.3	0.5	0.9	1.4
Whooping cough	0.0	0.1	-	-	-	-	-	-	-	-	-	-
Streptococcal sore throat, scarlatina, and erysipelas	0.0	-	-	-	-	-	-	-	0.0	0.0	0.0	0.1
Meningococcal infection	0.1	1.7	0.6	0.1	0.1	0.0	0.0	0.1	0.1	0.1	0.2	0.2
Septicemia	5.7	8.3	0.6	0.1	0.2	0.4	0.9	2.7	7.5	17.8	48.1	124.5
Acute poliomyelitis	-	-	-	-	-	-	-	-	-	-	-	-
Measles	0.0	-	0.0	0.0	-	0.0	-	-	-	-	-	-
Viral hepatitis	0.4	0.5	0.1	0.0	0.2	0.2	0.3	0.5	0.7	1.1	1.2	1.2
Syphilis	0.1	0.2	-	0.0	-	0.0	0.0	0.0	0.0	0.2	0.5	0.5
All other infectious and parasitic diseases	2.1	5.7	0.6	0.3	0.4	1.0	1.5	2.2	3.6	6.1	10.1	16.1
Malignant neoplasms, including neoplasms of lymphatic and hematopoietic tissues	189.3	3.6	4.7	3.9	5.6	12.8	45.6	172.2	443.0	829.3	1,254.7	1,583.4
Malignant neoplasms of lip, oral cavity, and pharynx	3.6	0.0	0.0	0.0	0.1	0.2	1.0	4.6	11.2	15.3	17.0	22.5
Malignant neoplasms of digestive organs and peritoneum	48.7	0.3	0.2	0.1	0.3	1.6	7.6	34.3	100.1	213.5	376.4	543.4
Malignant neoplasms of respiratory and intrathoracic organs	51.3	0.2	0.1	0.1	0.1	0.7	8.9	54.6	151.8	258.7	278.3	191.6
Malignant neoplasm of breast	16.3	0.0	-	0.0	0.1	1.6	8.5	23.7	43.8	59.7	82.9	124.9
Malignant neoplasms of genital organs	20.8	0.1	0.1	0.1	0.5	1.5	4.0	12.5	35.3	88.6	177.0	256.3
Malignant neoplasms of urinary organs	7.9	0.1	0.3	0.1	0.1	0.2	1.0	5.0	15.3	34.3	63.6	98.1
Malignant neoplasms of all other and unspecified sites	23.4	1.7	2.2	1.7	2.1	3.7	8.9	23.9	53.7	91.3	139.1	191.3
Leukemia	7.2	1.0	1.7	1.5	1.4	1.6	2.7	5.2	11.3	25.5	49.2	77.8
Other malignant neoplasms of lymphatic and hematopoietic tissues	10.0	0.1	0.2	0.4	1.0	1.7	3.1	8.3	20.5	42.3	71.0	77.4
Benign neoplasms, carcinoma in situ, and neoplasms of uncertain behavior and of unspecified nature	2.8	1.4	0.4	0.3	0.3	0.4	0.9	2.0	4.3	9.5	21.4	36.7
Diabetes mellitus	15.5	0.1	0.1	0.1	0.3	1.5	3.6	9.3	26.5	61.7	130.0	207.6
Nutritional deficiencies	1.1	0.9	0.0	0.0	0.0	0.0	0.1	0.2	0.6	2.2	9.8	46.7
Anemias	1.5	1.0	0.4	0.2	0.3	0.4	0.4	0.5	1.4	3.6	11.9	35.0
Meningitis	0.5	8.7	1.4	0.1	0.1	0.1	0.2	0.4	0.6	1.0	1.7	2.3
Major cardiovascular diseases	419.2	30.5	2.9	1.3	3.7	11.0	48.1	193.2	541.9	1,389.7	3,678.7	10,001.4
Diseases of heart	329.2	26.0	2.5	0.9	2.6	8.3	39.3	164.7	463.0	1,139.2	2,816.3	7,335.5
Rheumatic fever and rheumatic heart disease	2.9	0.2	0.0	0.0	0.1	0.4	1.0	2.9	6.2	12.1	20.2	25.3
Hypertensive heart disease	9.0	0.0	0.0	-	0.0	0.3	1.7	6.2	15.4	32.5	72.0	160.7
Hypertensive heart and renal disease	1.3	-	-	-	0.0	0.0	0.1	0.3	1.1	3.7	12.8	39.5
Ischemic heart disease	236.1	1.0	0.2	0.1	0.3	3.1	24.8	116.3	336.5	842.5	2,049.8	5,124.3
Acute myocardial infarction	122.3	0.7	0.1	0.1	0.2	2.0	15.9	76.1	214.5	503.9	1,036.5	1,779.5
Other acute and subacute forms of ischemic heart disease	1.7	0.0	0.0	0.0	0.0	0.0	0.4	1.8	3.6	6.6	11.5	25.6



Angina pectoris . . . . .	413	0.3	-	-	-	0.0	0.0	0.0	0.2	0.4	1.1	3.0	6.5
Old myocardial infarction and other forms of chronic ischemic heart disease . . . . .	412,414	111.7	0.3	0.1	0.1	0.1	1.1	8.5	38.2	118.0	330.8	998.8	3,312.7
Other diseases of endocardium . . . . .	424	3.6	0.7	0.1	0.0	0.1	0.2	0.6	1.5	4.1	12.2	34.5	73.6
All other forms of heart disease . . . . .	415-423,425-429	76.3	24.1	2.2	0.7	2.1	4.2	11.1	37.5	99.7	236.2	626.9	1,912.2
Hypertension with or without renal disease . . . . .	401,403	3.3	0.1	0.0	0.0	0.0	0.1	0.4	1.5	4.0	10.6	29.5	81.6
Cerebrovascular diseases. . . . .	430-438	66.5	3.9	0.4	0.3	0.8	2.2	7.3	22.8	57.6	182.2	652.7	1,912.5
Intracerebral and other intracranial hemorrhage. . . . .	431-432	8.3	2.6	0.1	0.1	0.3	0.8	2.7	7.6	14.3	29.0	66.1	110.0
Cerebral thrombosis and unspecified occlusion of cerebral arteries. . . . .	434.0,434.9	11.3	0.3	0.1	0.0	0.0	0.1	0.5	2.2	8.1	29.2	116.3	362.9
Cerebral embolism. . . . .	434.1	0.3	-	-	0.0	0.0	0.0	0.0	0.1	0.3	1.1	3.2	6.8
All other and late effects of cerebrovascular diseases. . . . .	430,433,435-438	46.6	1.1	0.2	0.1	0.5	1.3	4.2	12.9	35.0	122.9	467.0	1,432.9
Atherosclerosis . . . . .	440	11.3	0.0	0.0	0.0	0.0	0.0	0.1	1.1	4.5	19.3	98.5	530.8
Other diseases of arteries, arterioles, and capillaries . . . . .	441-448	9.0	0.4	0.1	0.1	0.2	0.4	1.0	3.1	12.8	38.3	81.8	140.9
Acute bronchitis and bronchiolitis. . . . .	466	0.2	2.4	0.1	0.0	0.0	0.0	0.1	0.1	0.2	0.4	1.4	6.3
Pneumonia and influenza. . . . .	480-487	23.9	21.0	1.7	0.4	0.7	1.4	2.8	6.7	16.8	51.1	205.8	859.9
Pneumonia . . . . .	480-486	23.3	20.8	1.6	0.4	0.6	1.4	2.7	6.6	16.5	50.0	201.1	832.0
Influenza . . . . .	487	0.6	0.2	0.1	0.0	0.0	0.0	0.0	0.1	0.3	1.1	4.8	27.9
Chronic obstructive pulmonary diseases and allied conditions. . . . .	490-496	28.3	1.4	0.4	0.3	0.5	0.6	1.7	10.0	44.9	139.8	260.7	309.2
Bronchitis, chronic and unspecified . . . . .	490-491	1.5	1.0	0.2	0.0	0.0	0.0	0.1	0.5	2.1	6.6	13.2	26.5
Emphysema . . . . .	492	5.7	0.2	0.0	-	0.0	0.0	0.2	2.1	10.0	30.3	50.6	48.3
Asthma . . . . .	493	1.5	0.1	0.2	0.2	0.4	0.5	0.8	1.7	3.1	5.1	8.2	11.3
Other chronic obstructive pulmonary diseases and allied conditions. . . . .	494-496	19.6	0.1	0.0	0.0	0.1	0.1	0.5	5.6	29.7	97.8	188.7	223.1
Ulcer of stomach and duodenum . . . . .	531-533	2.7	0.3	0.0	0.0	0.0	0.1	0.4	1.4	3.5	9.3	24.4	59.0
Appendicitis . . . . .	540-543	0.2	0.1	0.1	0.0	0.0	0.0	0.1	0.1	0.3	0.8	1.5	3.5
Hernia of abdominal cavity and intestinal obstruction without mention of hernia . . . . .	550-553,560	2.2	2.9	0.2	0.1	0.1	0.1	0.2	0.6	1.8	5.8	19.7	63.6
Chronic liver disease and cirrhosis. . . . .	571	11.7	0.6	0.1	0.0	0.2	3.0	10.0	24.3	36.2	38.5	31.8	18.5
Cholelithiasis and other disorders of gallbladder . . . . .	574-575	1.3	0.1	0.0	-	0.0	0.1	0.1	0.4	1.3	3.6	12.4	34.4
Nephritis, nephrotic syndrome, and nephrosis. . . . .	580-589	8.1	6.3	0.1	0.1	0.2	0.6	1.2	3.2	9.2	25.5	74.6	186.6
Acute glomerulonephritis and nephrotic syndrome . . . . .	580-581	0.2	0.2	0.0	0.0	0.0	0.0	0.0	0.0	0.2	0.5	1.3	2.9
Chronic glomerulonephritis, nephritis and nephropathy, not specified as acute or chronic, and renal sclerosis, unspecified. . . . .	582-583,587	0.8	0.2	0.0	0.0	0.1	0.1	0.2	0.4	0.9	2.5	7.4	17.1
Renal failure, disorders resulting from impaired renal function, and small kidney of unknown cause . . . . .	584-586,588-589	7.2	5.9	0.1	0.1	0.1	0.5	1.0	2.8	8.1	22.5	65.9	166.6
Infections of kidney. . . . .	590	0.9	0.1	0.0	0.0	0.0	0.1	0.1	0.3	0.7	2.1	8.8	27.9
Hyperplasia of prostate . . . . .	600	0.2	-	-	-	-	-	-	0.0	0.1	0.6	2.7	8.8
Complications of pregnancy, childbirth, and the puerperium . . . . .	630-676	0.1	...	...	-	0.3	0.3	0.1	-	...	...	...	...
Pregnancy with abortive outcome. . . . .	630-638	0.0	...	...	-	0.0	0.1	0.0	-	...	...	...	...
Other complications of pregnancy, childbirth, and the puerperium. . . . .	640-676	0.1	...	...	-	0.2	0.3	0.1	-	...	...	...	...
Congenital anomalies. . . . .	740-759	5.6	238.0	6.5	1.4	1.4	1.1	1.2	1.5	2.0	2.6	4.0	5.9
Certain conditions originating in the perinatal period . . . . .	760-779	8.3	522.1	0.8	0.0	0.0	0.0	0.0	0.0	0.0	0.0	0.0	0.0
Birth trauma, intrauterine hypoxia, birth asphyxia, and respiratory distress syndrome . . . . .	767-769	2.3	145.2	0.2	0.0	0.0	0.0	0.0	-	-	-	-	-
Other conditions originating in the perinatal period. . . . .	760-766,770-779	6.0	377.0	0.6	0.0	0.0	0.0	0.0	0.0	0.0	0.0	0.0	0.0

<sup>1</sup> Figures for age not stated included in All ages but not distributed among age groups.

**Table 7. Death rates for 72 selected causes by age: United States, 1983—Con.**

[Rates per 100,000 population in specified group]

<i>Cause of death</i> (Ninth Revision International Classification of Diseases, 1975)	<i>All ages</i> <sup>1</sup>	<i>Under 1 year</i>	<i>1-4 years</i>	<i>5-14 years</i>	<i>15-24 years</i>	<i>25-34 years</i>	<i>35-44 years</i>	<i>45-54 years</i>	<i>55-64 years</i>	<i>65-74 years</i>	<i>75-84 years</i>	<i>85 years and over</i>
Symptoms, signs, and ill-defined conditions . . . . . 780-799	12.7	161.5	2.1	0.4	1.9	3.6	4.3	7.6	15.2	29.0	61.3	183.5
All other diseases . . . . . Residual	55.6	51.3	7.3	3.1	5.4	9.9	17.7	36.2	74.7	166.3	423.4	1,050.1
Accidents and adverse effects . . . . . E800-E949	39.5	26.1	21.8	12.7	48.5	39.0	31.7	32.6	36.6	50.5	106.0	257.5
Motor vehicle accidents . . . . . E810-E825	19.0	5.2	7.5	6.6	35.1	23.4	16.8	15.3	14.7	17.1	26.0	25.0
All other accidents and adverse effects . . . . . E800-E807, E826-E949	20.5	20.9	14.3	6.1	13.4	15.6	15.0	17.3	22.0	33.4	80.1	232.5
Suicide . . . . . E950-E959	12.1	...	...	0.6	11.9	15.8	14.6	16.2	16.5	17.7	22.3	19.0
Homicide and legal intervention . . . . . E960-E978	8.6	5.3	2.3	1.0	12.4	15.4	11.8	8.7	6.1	4.3	4.9	5.0
All other external causes . . . . . E980-E999	1.3	1.5	0.5	0.2	1.3	2.0	1.7	1.6	1.4	1.2	1.7	2.6

<sup>1</sup>Figures for age not stated included in All ages but not distributed among age groups.

Table 8. Deaths from 72 selected causes by race and sex: United States, 1983

Cause of death (Ninth Revision International Classification of Diseases, 1975)	All other											
	All races			White			Total			Black		
	Both sexes	Male	Female	Both sexes	Male	Female	Both sexes	Male	Female	Both sexes	Male	Female
All causes . . . . .	2,019,201	1,071,923	947,278	1,765,582	931,779	833,803	253,619	140,144	113,475	233,124	127,911	105,213
Shigellosis and amebiasis . . . . . 004,006	30	17	13	23	15	8	7	2	5	5	1	4
Certain other intestinal infections . . . . . 007-009	354	172	182	262	117	145	92	55	37	84	51	33
Tuberculosis . . . . . 010-018	1,779	1,176	603	1,119	718	401	660	458	202	577	409	168
Tuberculosis of respiratory system . . . . . 010-012	1,418	982	436	925	616	309	493	366	127	431	327	104
Other tuberculosis . . . . . 013-018	361	194	167	194	102	92	167	92	75	146	82	64
Whooping cough . . . . . 033	5	1	4	5	1	4	-	-	-	-	-	-
Streptococcal sore throat, scarlatina, and erysipelas . . . . . 034-035	6	3	3	6	3	3	-	-	-	-	-	-
Meningococcal infection . . . . . 036	299	157	142	229	122	107	70	35	35	67	33	34
Septicemia . . . . . 038	13,394	6,417	6,977	10,696	5,119	5,577	2,698	1,298	1,400	2,550	1,221	1,329
Acute poliomyelitis . . . . . 045	-	-	-	-	-	-	-	-	-	-	-	-
Measles . . . . . 055	4	3	1	3	3	-	1	-	1	1	-	1
Viral hepatitis . . . . . 070	863	494	369	683	396	287	180	98	82	135	72	63
Syphilis . . . . . 090-097	121	68	53	70	35	35	51	33	18	50	32	18
All other infectious and parasitic diseases . . . . . 001-003,005, 020-032,037,039-041,046-054, 056-066,071-088,098-139	4,969	2,736	2,233	3,969	2,169	1,800	1,000	567	433	913	512	401
Malignant neoplasms, including neoplasms of lymphatic and hematopoietic tissues . . . . . 140-208	442,986	238,383	204,603	390,009	208,053	181,956	52,977	30,330	22,647	48,754	27,946	20,808
Malignant neoplasms of lip, oral cavity, and pharynx . . . . . 140-149	8,486	5,790	2,696	7,070	4,725	2,345	1,416	1,065	351	1,288	986	302
Malignant neoplasms of digestive organs and peritoneum . . . . . 150-159	113,864	59,738	54,126	99,010	51,457	47,553	14,854	8,281	6,573	13,357	7,354	6,003
Malignant neoplasms of respiratory and intrathoracic organs . . . . . 160-165	119,962	84,165	35,797	106,091	73,872	32,219	13,871	10,293	3,578	12,951	9,645	3,306
Malignant neoplasm of breast . . . . . 174-175	38,247	268	37,979	34,324	226	34,098	3,923	42	3,881	3,648	38	3,610
Malignant neoplasms of genital organs . . . . . 179-187	48,709	25,634	23,075	41,391	21,391	20,000	7,318	4,243	3,075	6,935	4,103	2,832
Malignant neoplasms of urinary organs . . . . . 188-189	18,555	12,029	6,526	16,946	11,057	5,889	1,609	972	637	1,495	899	596
Malignant neoplasms of all other and unspecified sites . . . . . 170-173,190-199	54,852	29,250	25,602	48,874	25,998	22,876	5,978	3,252	2,726	5,463	2,974	2,489
Leukemia . . . . . 204-208	16,820	9,312	7,508	15,231	8,461	6,770	1,589	851	738	1,394	741	653
Other malignant neoplasms of lymphatic and hematopoietic tissues . . . . . 200-203	23,491	12,197	11,294	21,072	10,866	10,206	2,419	1,331	1,088	2,223	1,206	1,017

Table 8. Deaths from 72 selected causes by race and sex: United States, 1983—Con.

Cause of death (Ninth Revision International Classification of Diseases, 1975)	All other											
	All races			White			Total			Black		
	Both sexes	Male	Female	Both sexes	Male	Female	Both sexes	Male	Female	Both sexes	Male	Female
Benign neoplasms, carcinoma in situ, and neoplasms of uncertain behavior and of unspecified nature . . . . . 210-239	6,483	2,985	3,498	5,728	2,639	3,089	755	346	409	684	307	377
Diabetes mellitus . . . . . 250	36,246	14,668	21,578	29,987	12,337	17,650	6,259	2,331	3,928	5,790	2,123	3,667
Nutritional deficiencies . . . . . 260-269	2,656	1,065	1,591	2,252	853	1,399	404	212	192	372	199	173
Anemias . . . . . 280-285	3,487	1,571	1,916	2,786	1,217	1,569	701	354	347	665	334	331
Meningitis . . . . . 320-322	1,287	670	617	935	486	449	352	184	168	332	175	157
Major cardiovascular diseases . . . . . 390-448	981,098	492,335	488,763	875,077	439,106	435,971	106,021	53,229	52,792	98,520	48,812	49,708
Diseases of heart . . . . . 390-398,402,404-429	770,432	402,727	367,705	689,749	360,951	328,798	80,683	41,776	38,907	75,008	38,311	36,697
Rheumatic fever and rheumatic heart disease . . . . . 390-398	6,895	2,199	4,696	6,341	1,996	4,345	554	203	351	465	166	299
Hypertensive heart disease . . . . . 402	20,984	9,106	11,878	15,463	6,458	9,005	5,521	2,648	2,873	5,339	2,546	2,793
Hypertensive heart and renal disease . . . . . 404	3,073	1,221	1,852	2,365	923	1,442	708	298	410	686	289	397
Ischemic heart disease . . . . . 410-414	552,492	297,522	254,970	505,927	273,246	232,681	46,565	24,276	22,289	42,751	21,911	20,840
Acute myocardial infarction . . . . . 410	286,300	165,679	120,621	262,549	152,898	109,651	23,751	12,781	10,970	21,775	11,529	10,246
Other acute and subacute forms of ischemic heart disease . . . . . 411	4,059	2,501	1,558	3,405	2,132	1,273	654	369	285	624	350	274
Angina pectoris . . . . . 413	744	376	368	667	339	328	77	37	40	70	32	38
Old myocardial infarction and other forms of chronic ischemic heart disease . . . . . 412,414	261,389	128,966	132,423	239,306	117,877	121,429	22,083	11,089	10,994	20,282	10,000	10,282
Other diseases of endocardium . . . . . 424	8,372	4,073	4,299	7,675	3,722	3,953	697	351	346	613	300	313
All other forms of heart disease . . . . . 415-423,425-429	178,616	88,606	90,010	151,978	74,606	77,372	26,638	14,000	12,638	25,154	13,099	12,055
Hypertension with or without renal disease . . . . . 401,403	7,739	3,476	4,263	6,092	2,724	3,368	1,647	752	895	1,582	719	863
Cerebrovascular diseases . . . . . 430-438	155,598	62,847	92,751	135,596	53,968	81,628	20,002	8,879	11,123	18,562	8,139	10,423
Intracerebral and other intracranial hemorrhage . . . . . 431-432	19,407	8,717	10,690	15,999	7,017	8,982	3,408	1,700	1,708	3,069	1,515	1,554
Cerebral thrombosis and unspecified occlusion of cerebral arteries . . . . . 434.0,434.9	26,435	10,583	15,852	23,541	9,311	14,230	2,894	1,272	1,622	2,705	1,168	1,537
Cerebral embolism . . . . . 434.1	746	296	450	680	267	413	66	29	37	62	27	35
All other and late effects of cerebrovascular diseases . . . . . 430,433,435-438	109,010	43,251	65,759	95,376	37,373	58,003	13,634	5,878	7,756	12,726	5,429	7,297

Atherosclerosis . . . . .	440	26,371	10,042	16,329	24,451	9,165	15,286	1,920	877	1,043	1,807	823	984
Other diseases of arteries, arterioles, and capillaries . . . . .	441-448	20,958	13,243	7,715	19,189	12,298	6,891	1,769	945	824	1,561	820	741
Acute bronchitis and bronchiolitis . . . . .	466	552	273	279	481	229	252	71	44	27	59	34	25
Pneumonia and influenza . . . . .	480-487	55,854	28,007	27,847	49,996	24,463	25,533	5,858	3,544	2,314	5,234	3,190	2,044
Pneumonia . . . . .	480-486	54,423	27,464	26,959	48,616	23,943	24,673	5,807	3,521	2,286	5,194	3,171	2,023
Influenza . . . . .	487	1,431	543	888	1,380	520	860	51	23	28	40	19	21
Chronic obstructive pulmonary diseases and allied conditions . . . . .	490-496	66,246	43,119	23,127	61,709	39,978	21,731	4,537	3,141	1,396	4,068	2,813	1,255
Bronchitis, chronic and unspecified . . . . .	490-491	3,578	2,139	1,439	3,364	1,995	1,369	214	144	70	180	120	60
Emphysema . . . . .	492	13,293	9,203	4,090	12,588	8,653	3,935	705	550	155	624	484	140
Asthma . . . . .	493	3,561	1,455	2,106	2,751	1,084	1,667	810	371	439	732	336	396
Other chronic obstructive pulmonary diseases and allied conditions . . . . .	494-496	45,814	30,322	15,492	43,006	28,246	14,760	2,808	2,076	732	2,532	1,873	659
Ulcer of stomach and duodenum . . . . .	531-533	6,369	3,260	3,109	5,752	2,885	2,867	617	375	242	547	327	220
Appendicitis . . . . .	540-543	526	292	234	428	238	190	98	54	44	91	51	40
Hernia of abdominal cavity and intestinal obstruction without mention of hernia . . . . .	550-553,560	5,094	2,091	3,003	4,416	1,732	2,684	678	359	319	635	334	301
Chronic liver disease and cirrhosis . . . . .	571	27,266	17,530	9,736	22,927	14,823	8,104	4,339	2,707	1,632	3,883	2,429	1,454
Cholelithiasis and other disorders of gallbladder . . . . .	574-575	2,989	1,385	1,604	2,684	1,255	1,429	305	130	175	262	103	159
Nephritis, nephrotic syndrome, and nephrosis . . . . .	580-589	18,998	9,312	9,686	15,334	7,548	7,786	3,664	1,764	1,900	3,426	1,648	1,778
Acute glomerulonephritis and nephrotic syndrome . . . . .	580-581	354	171	183	301	143	158	53	28	25	49	26	23
Chronic glomerulonephritis, nephritis and nephropathy, not specified as acute or chronic, and renal sclerosis, unspecified . . . . .	582-583,587	1,887	882	1,005	1,497	675	822	390	207	183	366	194	172
Renal failure, disorders resulting from impaired renal function, and small kidney of unknown cause . . . . .	584-586,588-589	16,757	8,259	8,498	13,536	6,730	6,806	3,221	1,529	1,692	3,011	1,428	1,583
Infections of kidney . . . . .	590	2,089	715	1,374	1,821	613	1,208	268	102	166	254	96	158
Hyperplasia of prostate . . . . .	600	572	572	...	501	501	...	71	71	...	69	69	...
Complications of pregnancy, childbirth, and the puerperium . . . . .	630-676	290	...	290	170	...	170	120	...	120	107	...	107
Pregnancy with abortive outcome . . . . .	630-638	50	...	50	23	...	23	27	...	27	26	...	26
Other complications of pregnancy, childbirth, and the puerperium . . . . .	640-676	240	...	240	147	...	147	93	...	93	81	...	81
Congenital anomalies . . . . .	740-759	13,173	7,013	6,160	10,747	5,718	5,029	2,426	1,295	1,131	2,088	1,108	980

**Table 8. Deaths from 72 selected causes by race and sex: United States, 1983—Con.**

Cause of death (Ninth Revision International Classification of Diseases, 1975)	All other											
	All races			White			Total			Black		
	Both sexes	Male	Female	Both sexes	Male	Female	Both sexes	Male	Female	Both sexes	Male	Female
Certain conditions originating in the perinatal period . . . 760-779	19,310	11,036	8,274	12,816	7,417	5,399	6,494	3,619	2,875	6,100	3,401	2,699
Birth trauma, intrauterine hypoxia, birth asphyxia, and respiratory distress syndrome . . . . . 767-769	5,371	3,224	2,147	3,885	2,383	1,502	1,486	841	645	1,374	774	600
Other conditions originating in the perinatal period . . . . . 760-766,770-779	13,939	7,812	6,127	8,931	5,034	3,897	5,008	2,778	2,230	4,726	2,627	2,099
Symptoms, signs, and ill-defined conditions . . . . . 780-799	29,628	16,666	12,962	22,387	12,525	9,862	7,241	4,141	3,100	6,787	3,879	2,908
All other diseases . . . . . Residual	130,087	64,336	65,751	111,248	54,305	56,943	18,839	10,031	8,808	17,316	9,182	8,134
Accidents and adverse effects . . . . . E800-E949	92,488	63,902	28,586	78,607	54,074	24,533	13,881	9,828	4,053	11,883	8,385	3,498
Motor vehicle accidents . . . . . E810-E825	44,452	31,907	12,545	38,864	27,781	11,083	5,588	4,126	1,462	4,472	3,349	1,123
All other accidents and adverse effects . . . . . E800-E807, E826-E949	48,036	31,995	16,041	39,743	26,293	13,450	8,293	5,702	2,591	7,411	5,036	2,375
Suicide . . . . . E950-E959	28,295	21,786	6,509	26,157	20,097	6,060	2,138	1,689	449	1,623	1,321	302
Homicide and legal intervention . . . . . E960-E978	20,191	15,514	4,677	11,235	8,355	2,880	8,956	7,159	1,797	8,494	6,822	1,672
All other external causes . . . . . E980-E999	3,117	2,193	924	2,327	1,634	693	790	559	231	699	492	207

**Table 9. Death rates for 72 selected causes by race and sex: United States, 1983**

[Rates per 100,000 population in specified group]

Cause of death (Ninth Revision International Classification of Diseases, 1975)	All other											
	All races			White			Total			Black		
	Both sexes	Male	Female	Both sexes	Male	Female	Both sexes	Male	Female	Both sexes	Male	Female
All causes.....	862.8	942.6	787.4	884.6	957.4	815.3	736.6	854.9	629.2	830.5	963.3	711.2
Shigellosis and amebiasis.....004,006	0.0	0.0	0.0	0.0	0.0	0.0	0.0	0.0	0.0	0.0	0.0	0.0
Certain other intestinal infections.....007-009	0.2	0.2	0.2	0.1	0.1	0.1	0.3	0.3	0.2	0.3	0.4	0.2
Tuberculosis.....010-018	0.8	1.0	0.5	0.6	0.7	0.4	1.9	2.8	1.1	2.1	3.1	1.1
Tuberculosis of respiratory system.....010-012	0.6	0.9	0.4	0.5	0.6	0.3	1.4	2.2	0.7	1.5	2.5	0.7
Other tuberculosis.....013-018	0.2	0.2	0.1	0.1	0.1	0.1	0.5	0.6	0.4	0.5	0.6	0.4
Whooping cough.....033	0.0	0.0	0.0	0.0	0.0	0.0	-	-	-	-	-	-
Streptococcal sore throat, scarlatina, and erysipelas...034-035	0.0	0.0	0.0	0.0	0.0	0.0	-	-	-	-	-	-
Meningococcal infection.....036	0.1	0.1	0.1	0.1	0.1	0.1	0.2	0.2	0.2	0.2	0.2	0.2
Septicemia.....038	5.7	5.6	5.8	5.4	5.3	5.5	7.8	7.9	7.8	9.1	9.2	9.0
Acute poliomyelitis.....045	-	-	-	-	-	-	-	-	-	-	-	-
Measles.....055	0.0	0.0	0.0	0.0	0.0	-	0.0	-	0.0	0.0	-	0.0
Viral hepatitis.....070	0.4	0.4	0.3	0.3	0.4	0.3	0.5	0.6	0.5	0.5	0.5	0.4
Syphilis.....090-097	0.1	0.1	0.0	0.0	0.0	0.0	0.1	0.2	0.1	0.2	0.2	0.1
All other infectious and parasitic diseases.....001-003,005,020-032,037,039-041,046-054,056-066,071-088,098-139	2.1	2.4	1.9	2.0	2.2	1.8	2.9	3.5	2.4	3.3	3.9	2.7
Malignant neoplasms, including neoplasms of lymphatic and hematopoietic tissues.....140-208	189.3	209.6	170.1	195.4	213.8	177.9	153.9	185.0	125.6	173.7	210.5	140.7
Malignant neoplasms of lip, oral cavity, and pharynx.....140-149	3.6	5.1	2.2	3.5	4.9	2.3	4.1	6.5	1.9	4.6	7.4	2.0
Malignant neoplasms of digestive organs and peritoneum.....150-159	48.7	52.5	45.0	49.6	52.9	46.5	43.1	50.5	36.4	47.6	55.4	40.6
Malignant neoplasms of respiratory and intrathoracic organs.....160-165	51.3	74.0	29.8	53.2	75.9	31.5	40.3	62.8	19.8	46.1	72.6	22.3
Malignant neoplasm of breast.....174-175	16.3	0.2	31.6	17.2	0.2	33.3	11.4	0.3	21.5	13.0	0.3	24.4
Malignant neoplasms of genital organs.....179-187	20.8	22.5	19.2	20.7	22.0	19.6	21.3	25.9	17.0	24.7	30.9	19.1
Malignant neoplasms of urinary organs.....188-189	7.9	10.6	5.4	8.5	11.4	5.8	4.7	5.9	3.5	5.3	6.8	4.0
Malignant neoplasms of all other and unspecified sites.....170-173,190-199	23.4	25.7	21.3	24.5	26.7	22.4	17.4	19.8	15.1	19.5	22.4	16.8
Leukemia.....204-208	7.2	8.2	6.2	7.6	8.7	6.6	4.6	5.2	4.1	5.0	5.6	4.4
Other malignant neoplasms of lymphatic and hematopoietic tissues.....200-203	10.0	10.7	9.4	10.6	11.2	10.0	7.0	8.1	6.0	7.9	9.1	6.9
Benign neoplasms, carcinoma in situ, and neoplasms of uncertain behavior and of unspecified nature.....210-239	2.8	2.6	2.9	2.9	2.7	3.0	2.2	2.1	2.3	2.4	2.3	2.5
Diabetes mellitus.....250	15.5	12.9	17.9	15.0	12.7	17.3	18.2	14.2	21.8	20.6	16.0	24.8
Nutritional deficiencies.....260-269	1.1	0.9	1.3	1.1	0.9	1.4	1.2	1.3	1.1	1.3	1.5	1.2
Anemias.....280-285	1.5	1.4	1.6	1.4	1.3	1.5	2.0	2.2	1.9	2.4	2.5	2.2
Meningitis.....320-322	0.5	0.6	0.5	0.5	0.5	0.4	1.0	1.1	0.9	1.2	1.3	1.1
Major cardiovascular diseases.....390-448	419.2	432.9	406.3	438.4	451.2	426.3	307.9	324.7	292.7	351.0	367.6	336.0
Diseases of heart.....390-398,402,404-429	329.2	354.1	305.7	345.6	370.9	321.5	234.3	254.8	215.7	267.2	288.5	248.1
Rheumatic fever and rheumatic heart disease.....390-398	2.9	1.9	3.9	3.2	2.1	4.2	1.6	1.2	1.9	1.7	1.3	2.0
Hypertensive heart disease.....402	9.0	8.0	9.9	7.7	6.6	8.8	16.0	16.2	15.9	19.0	19.2	18.9
Hypertensive heart and renal disease.....404	1.3	1.1	1.5	1.2	0.9	1.4	2.1	1.8	2.3	2.4	2.2	2.7
Ischemic heart disease.....410-414	236.1	261.6	211.9	253.5	280.8	227.5	135.2	148.1	123.6	152.3	165.0	140.9
Acute myocardial infarction.....410	122.3	145.7	100.3	131.5	157.1	107.2	69.0	78.0	60.8	77.6	86.8	69.3
Other acute and subacute forms of ischemic heart disease.....411	1.7	2.2	1.3	1.7	2.2	1.2	1.9	2.3	1.6	2.2	2.6	1.9

**Table 9. Death rates for 72 selected causes by race and sex: United States, 1983—Con.**

[Rates per 100,000 population in specified group]

Cause of death (Ninth Revision International Classification of Diseases, 1975)	All races			White			All other						
							Total			Black			
	Both sexes	Male	Female	Both sexes	Male	Female	Both sexes	Male	Female	Both sexes	Male	Female	
Major cardiovascular diseases—Con.													
Diseases of heart—Con.													
Ischemic heart disease—Con.													
Angina pectoris . . . . .	413	0.3	0.3	0.3	0.3	0.3	0.2	0.2	0.2	0.2	0.2	0.3	
Old myocardial infarction and other forms of chronic ischemic heart disease . . . . .	412,414	111.7	113.4	110.1	119.9	121.1	118.7	64.1	67.6	61.0	72.2	75.3	69.5
Other diseases of endocardium . . . . .	424	3.6	3.6	3.6	3.8	3.8	3.9	2.0	2.1	1.9	2.2	2.3	2.1
All other forms of heart disease . . . . .	415–423,425–429	76.3	77.9	74.8	76.1	76.7	75.7	77.4	85.4	70.1	89.6	98.6	81.5
Hypertension with or without renal disease . . . . .	401,403	3.3	3.1	3.5	3.1	2.8	3.3	4.8	4.6	5.0	5.6	5.4	5.8
Cerebrovascular diseases . . . . .	430–438	66.5	55.3	77.1	67.9	55.5	79.8	58.1	54.2	61.7	66.1	61.3	70.5
Intracerebral and other intracranial hemorrhage . . . . .	431–432	8.3	7.7	8.9	8.0	7.2	8.8	9.9	10.4	9.5	10.9	11.4	10.5
Cerebral thrombosis and unspecified occlusion of cerebral arteries . . . . .	434.0,434.9	11.3	9.3	13.2	11.8	9.6	13.9	8.4	7.8	9.0	9.6	8.8	10.4
Cerebral embolism . . . . .	434.1	0.3	0.3	0.4	0.3	0.3	0.4	0.2	0.2	0.2	0.2	0.2	0.2
All other and late effects of cerebrovascular diseases . . . . .	430,433,435–438	46.6	38.0	54.7	47.8	38.4	56.7	39.6	35.9	43.0	45.3	40.9	49.3
Atherosclerosis . . . . .	440	11.3	8.8	13.6	12.3	9.4	14.9	5.6	5.3	5.8	6.4	6.2	6.7
Other diseases of arteries, arterioles, and capillaries . . . . .	441–448	9.0	11.6	6.4	9.6	12.6	6.7	5.1	5.8	4.6	5.6	6.2	5.0
Acute bronchitis and bronchiolitis . . . . .	466	0.2	0.2	0.2	0.2	0.2	0.2	0.2	0.3	0.1	0.2	0.3	0.2
Pneumonia and influenza . . . . .	480–487	23.9	24.6	23.1	25.0	25.1	25.0	17.0	21.6	12.8	18.6	24.0	13.8
Pneumonia . . . . .	480–486	23.3	24.2	22.4	24.4	24.6	24.1	16.9	21.5	12.7	18.5	23.9	13.7
Influenza . . . . .	487	0.6	0.5	0.7	0.7	0.5	0.8	0.1	0.1	0.2	0.1	0.1	0.1
Chronic obstructive pulmonary diseases and allied conditions . . . . .	490–496	28.3	37.9	19.2	30.9	41.1	21.2	13.2	19.2	7.7	14.5	21.2	8.5
Bronchitis, chronic and unspecified . . . . .	490–491	1.5	1.9	1.2	1.7	2.0	1.3	0.6	0.9	0.4	0.6	0.9	0.4
Emphysema . . . . .	492	5.7	8.1	3.4	6.3	8.9	3.8	2.0	3.4	0.9	2.2	3.6	0.9
Asthma . . . . .	493	1.5	1.3	1.8	1.4	1.1	1.6	2.4	2.3	2.4	2.6	2.5	2.7
Other chronic obstructive pulmonary diseases and allied conditions . . . . .	494–496	19.6	26.7	12.9	21.5	29.0	14.4	8.2	12.7	4.1	9.0	14.1	4.5
Ulcer of stomach and duodenum . . . . .	531–533	2.7	2.9	2.6	2.9	3.0	2.8	1.8	2.3	1.3	1.9	2.5	1.5
Appendicitis . . . . .	540–543	0.2	0.3	0.2	0.2	0.2	0.2	0.3	0.3	0.2	0.3	0.4	0.3
Hernia of abdominal cavity and intestinal obstruction without mention of hernia . . . . .	550–553,560	2.2	1.8	2.5	2.2	1.8	2.6	2.0	2.2	1.8	2.3	2.5	2.0
Chronic liver disease and cirrhosis . . . . .	571	11.7	15.4	8.1	11.5	15.2	7.9	12.6	16.5	9.0	13.8	18.3	9.8
Cholelithiasis and other disorders of gallbladder . . . . .	574–575	1.3	1.2	1.3	1.3	1.3	1.4	0.9	0.8	1.0	0.9	0.8	1.1
Nephritis, nephrotic syndrome, and nephrosis . . . . .	580–589	8.1	8.2	8.1	7.7	7.8	7.6	10.6	10.8	10.5	12.2	12.4	12.0
Acute glomerulonephritis and nephrotic syndrome . . . . .	580–581	0.2	0.2	0.2	0.2	0.1	0.2	0.2	0.2	0.1	0.2	0.2	0.2
Chronic glomerulonephritis, nephritis and nephropathy, not specified as acute or chronic, and renal sclerosis, unspecified . . . . .	582–583,587	0.8	0.8	0.8	0.8	0.7	0.8	1.1	1.3	1.0	1.3	1.5	1.2
Renal failure, disorders resulting from impaired renal function, and small kidney of unknown cause . . . . .	584–586,588–589	7.2	7.3	7.1	6.8	6.9	6.7	9.4	9.3	9.4	10.7	10.8	10.7
Infections of kidney . . . . .	590	0.9	0.6	1.1	0.9	0.6	1.2	0.8	0.6	0.9	0.9	0.7	1.1
Hyperplasia of prostate . . . . .	600	0.2	0.5	...	0.3	0.5	...	0.2	0.4	...	0.2	0.5	...



Complications of pregnancy, childbirth, and the puerperium . . . . .	630-676	0.1	...	0.2	0.1	...	0.2	0.3	...	0.7	0.4	...	0.7
Pregnancy with abortive outcome . . . . .	630-638	0.0	...	0.0	0.0	...	0.0	0.1	...	0.1	0.1	...	0.2
Other complications of pregnancy, childbirth, and the puerperium . . . . .	640-676	0.1	...	0.2	0.1	...	0.1	0.3	...	0.5	0.3	...	0.5
Congenital anomalies . . . . .	740-759	5.6	6.2	5.1	5.4	5.9	4.9	7.0	7.9	6.3	7.4	8.3	6.6
Certain conditions originating in the perinatal period . . . . .	760-779	8.3	9.7	6.9	6.4	7.6	5.3	18.9	22.1	15.9	21.7	25.6	18.2
Birth trauma, intrauterine hypoxia, birth asphyxia, and respiratory distress syndrome . . . . .	767-769	2.3	2.8	1.8	1.9	2.4	1.5	4.3	5.1	3.6	4.9	5.8	4.1
Other conditions originating in the perinatal period . . . . .	760-766,770-779	6.0	6.9	5.1	4.5	5.2	3.8	14.5	16.9	12.4	16.8	19.8	14.2
Symptoms, signs, and ill-defined conditions . . . . .	780-799	12.7	14.7	10.8	11.2	12.9	9.6	21.0	25.3	17.2	24.2	29.2	19.7
All other diseases . . . . .	Residual	55.6	56.6	54.7	55.7	55.8	55.7	54.7	61.2	48.8	61.7	69.1	55.0
Accidents and adverse effects . . . . .	E800-E949	39.5	56.2	23.8	39.4	55.6	24.0	40.3	60.0	22.5	42.3	63.1	23.6
Motor vehicle accidents . . . . .	E810-E825	19.0	28.1	10.4	19.5	28.5	10.8	16.2	25.2	8.1	15.9	25.2	7.6
All other accidents and adverse effects . . . . .	E800-E807,E826-E949	20.5	28.1	13.3	19.9	27.0	13.2	24.1	34.8	14.4	26.4	37.9	16.1
Suicide . . . . .	E950-E959	12.1	19.2	5.4	13.1	20.6	5.9	6.2	10.3	2.5	5.8	9.9	2.0
Homicide and legal intervention . . . . .	E960-E978	8.6	13.6	3.9	5.6	8.6	2.8	26.0	43.7	10.0	30.3	51.4	11.3
All other external causes . . . . .	E980-E999	1.3	1.9	0.8	1.2	1.7	0.7	2.3	3.4	1.3	2.5	3.7	1.4

Table 10. Age-adjusted death rates for 72 selected causes by race and sex: United States, 1983

[Rates per 100,000 population in specified group. Computed by the direct method, using as the standard population the age distribution of the total population of the United States as enumerated in 1940]

Cause of death (Ninth Revision International Classification of Diseases, 1975)	All other											
	All races			White			Total			Black		
	Both sexes	Male	Female	Both sexes	Male	Female	Both sexes	Male	Female	Both sexes	Male	Female
All causes	550.5	725.3	411.5	528.0	698.4	392.7	703.1	916.3	535.2	777.9	1,019.6	590.4
Shigellosis and amebiasis . . . . . 004,006	0.0	0.0	0.0	0.0	0.0	0.0	0.0	0.0	0.0	0.0	0.0	0.0
Certain other intestinal infections . . . . . 007-009	0.1	0.1	0.1	0.1	0.1	0.1	0.2	0.3	0.2	0.2	0.3	0.2
Tuberculosis . . . . . 010-018	0.5	0.8	0.3	0.3	0.5	0.2	1.9	3.2	1.0	2.1	3.5	1.0
Tuberculosis of respiratory system . . . . . 010-012	0.4	0.7	0.2	0.3	0.5	0.2	1.5	2.6	0.6	1.6	2.8	0.6
Other tuberculosis . . . . . 013-018	0.1	0.1	0.1	0.1	0.1	0.0	0.5	0.6	0.4	0.5	0.7	0.4
Whooping cough . . . . . 033	0.0	0.0	0.0	0.0	0.0	0.0	-	-	-	-	-	-
Streptococcal sore throat, scarlatina, and erysipelas . . . . . 034-035	0.0	0.0	0.0	0.0	0.0	0.0	-	-	-	-	-	-
Meningococcal infection . . . . . 036	0.1	0.1	0.1	0.1	0.1	0.1	0.2	0.2	0.2	0.2	0.2	0.2
Septicemia . . . . . 038	3.4	4.1	2.8	2.9	3.6	2.4	7.2	8.3	6.3	8.1	9.4	7.1
Acute poliomyelitis . . . . . 045	-	-	-	-	-	-	-	-	-	-	-	-
Measles . . . . . 055	0.0	0.0	0.0	0.0	0.0	-	0.0	-	0.0	0.0	-	0.0
Viral hepatitis . . . . . 070	0.3	0.4	0.2	0.3	0.3	0.2	0.5	0.6	0.4	0.5	0.6	0.4
Syphilis . . . . . 090-097	0.0	0.0	0.0	0.0	0.0	0.0	0.1	0.2	0.1	0.2	0.2	0.1
All other infectious and parasitic diseases . . . . . 001-003,005,020-032, 037,039-041,046-054,056-066,071-088,098-139	1.7	2.1	1.3	1.5	1.8	1.2	3.0	3.7	2.4	3.4	4.2	2.7
Malignant neoplasms, including neoplasms of lymphatic and hematopoietic tissues . . . . . 140-208	132.6	164.3	109.9	129.4	158.9	108.5	156.8	208.4	118.6	172.9	232.2	129.8
Malignant neoplasms of lip, oral cavity, and pharynx . . . . . 140-149	2.7	4.3	1.5	2.5	3.8	1.4	4.6	7.9	2.0	5.1	9.0	2.1
Malignant neoplasms of digestive organs and peritoneum . . . . . 150-159	31.8	40.5	25.1	30.4	38.5	24.2	43.0	57.1	32.1	46.1	61.3	34.6
Malignant neoplasms of respiratory and intrathoracic organs . . . . . 160-165	37.9	59.8	20.9	37.2	58.0	21.0	43.1	73.5	19.8	48.4	83.3	22.0
Malignant neoplasm of breast . . . . . 174-175	12.4	0.2	22.7	12.4	0.2	22.7	12.3	0.3	21.8	13.8	0.3	24.4
Malignant neoplasms of genital organs . . . . . 179-187	13.3	15.1	13.0	12.5	13.9	12.5	20.0	26.2	16.4	22.5	30.4	17.9
Malignant neoplasms of urinary organs . . . . . 188-189	5.1	7.9	3.0	5.1	8.1	3.0	4.5	6.5	3.1	5.0	7.2	3.4
Malignant neoplasms of all other and unspecified sites . . . . . 170-173,190-199	17.2	21.2	13.9	17.1	21.2	13.8	17.6	22.3	14.1	19.4	24.8	15.3
Leukemia . . . . . 204-208	5.1	6.6	4.0	5.2	6.6	4.0	4.5	5.6	3.7	4.8	5.9	4.0
Other malignant neoplasms of lymphatic and hematopoietic tissues . . . . . 200-203	7.1	8.7	5.8	7.1	8.6	5.8	7.0	9.0	5.5	7.8	10.0	6.1
Benign neoplasms, carcinoma in situ, and neoplasms of uncertain behavior and of unspecified nature . . . . . 210-239	1.9	2.1	1.7	1.8	2.0	1.7	2.1	2.3	2.0	2.3	2.5	2.2
Diabetes mellitus . . . . . 250	9.9	9.9	9.8	8.9	9.2	8.6	17.8	16.0	19.0	19.7	17.7	21.1
Nutritional deficiencies . . . . . 260-269	0.5	0.6	0.5	0.5	0.5	0.4	0.9	1.3	0.7	1.0	1.4	0.7
Anemias . . . . . 280-285	0.9	1.0	0.8	0.7	0.8	0.7	1.9	2.2	1.7	2.2	2.5	1.9
Meningitis . . . . . 320-322	0.5	0.5	0.4	0.4	0.4	0.3	1.0	1.1	0.9	1.1	1.3	1.0
Major cardiovascular diseases . . . . . 390-448	235.0	314.0	172.9	228.1	308.7	164.7	284.1	351.6	231.9	315.4	390.5	258.1
Diseases of heart . . . . . 390-398,402,404-429	188.8	260.4	132.3	184.6	257.8	126.7	217.8	277.4	171.8	242.0	308.2	191.5
Rheumatic fever and rheumatic heart disease . . . . . 390-398	2.1	1.6	2.4	2.1	1.6	2.5	1.7	1.4	1.9	1.8	1.4	2.0
Hypertensive heart disease . . . . . 402	5.5	6.3	4.8	4.2	4.8	3.6	16.0	18.5	13.9	18.5	21.6	16.0
Hypertensive heart and renal disease . . . . . 404	0.6	0.7	0.6	0.5	0.6	0.5	1.8	1.9	1.8	2.1	2.3	2.0

Ischemic heart disease.....	410-414	135.2	192.4	90.2	136.1	195.7	89.0	124.8	161.1	96.9	136.6	175.8	106.8
Acute myocardial infarction.....	410	76.1	111.3	48.1	77.0	114.0	47.6	66.1	86.5	50.4	72.3	94.3	55.7
Other acute and subacute forms of ischemic heart disease.....	411	1.1	1.8	0.7	1.1	1.7	0.6	1.9	2.5	1.3	2.1	2.9	1.5
Angina pectoris.....	413	0.2	0.2	0.1	0.2	0.2	0.1	0.2	0.3	0.2	0.2	0.3	0.2
Old myocardial infarction and other forms of chronic ischemic heart disease.....	412,414	57.9	79.1	41.3	57.8	79.8	40.6	56.6	71.8	44.9	61.9	78.3	49.4
Other diseases of endocardium.....	424	2.0	2.6	1.6	2.0	2.6	1.6	1.9	2.3	1.6	2.0	2.4	1.7
All other forms of heart disease.....	415-423,425-429	43.2	56.8	32.6	39.6	52.4	29.6	71.7	92.3	55.7	81.0	104.8	62.9
Hypertension with or without renal disease.....	401,403	1.8	2.2	1.6	1.5	1.8	1.3	4.5	5.0	4.1	5.2	5.8	4.7
Cerebrovascular diseases.....	430-438	34.4	37.7	31.8	32.0	35.2	29.6	52.6	57.8	48.6	58.3	64.2	53.8
Intracerebral and other intracranial hemorrhage.....	431-432	5.5	6.1	5.0	4.8	5.3	4.4	10.4	12.2	9.0	11.5	13.4	9.9
Cerebral thrombosis and unspecified occlusion of cerebral arteries.....	434.0,434.9	5.4	6.1	4.9	5.2	5.9	4.7	7.3	8.1	6.6	8.1	9.0	7.3
Cerebral embolism.....	434.1	0.2	0.2	0.2	0.2	0.2	0.2	0.2	0.2	0.2	0.2	0.2	0.2
All other and late effects of cerebrovascular diseases.....	430,433,435-438	23.3	25.3	21.7	21.8	23.9	20.3	34.8	37.3	32.8	38.6	41.6	36.4
Atherosclerosis.....	440	4.6	5.3	4.1	4.6	5.3	4.1	4.3	5.1	3.7	4.7	5.7	4.1
Other diseases of arteries, arterioles, and capillaries.....	441-448	5.3	8.4	3.1	5.4	8.6	3.0	4.8	6.3	3.7	5.1	6.6	4.0
Acute bronchitis and bronchiolitis.....	466	0.1	0.2	0.1	0.1	0.2	0.1	0.2	0.3	0.1	0.2	0.2	0.1
Pneumonia and influenza.....	480-487	11.8	16.2	8.8	11.3	15.3	8.6	14.9	22.1	9.6	16.2	24.3	10.2
Pneumonia.....	480-486	11.5	15.9	8.6	11.0	15.0	8.3	14.8	22.0	9.5	16.1	24.2	10.1
Influenza.....	487	0.3	0.3	0.2	0.3	0.3	0.3	0.1	0.1	0.1	0.1	0.1	0.1
Chronic obstructive pulmonary diseases and allied conditions.....	490-496	17.4	27.0	10.9	17.9	27.6	11.3	12.7	20.5	7.1	13.7	22.2	7.6
Bronchitis, chronic and unspecified.....	490-491	0.9	1.3	0.6	0.9	1.4	0.6	0.6	0.9	0.3	0.6	0.9	0.4
Emphysema.....	492	3.6	5.8	2.0	3.7	6.1	2.1	2.0	3.6	0.7	2.1	3.9	0.8
Asthma.....	493	1.2	1.1	1.3	0.9	0.9	1.0	2.5	2.5	2.5	2.8	2.8	2.8
Other chronic obstructive pulmonary diseases and allied conditions.....	494-496	11.8	18.7	7.0	12.2	19.3	7.4	7.7	13.5	3.5	8.3	14.7	3.7
Ulcer of stomach and duodenum.....	531-533	1.6	2.1	1.2	1.5	2.0	1.2	1.7	2.5	1.1	1.8	2.6	1.2
Appendicitis.....	540-543	0.1	0.2	0.1	0.1	0.2	0.1	0.3	0.3	0.2	0.3	0.4	0.3
Hernia of abdominal cavity and intestinal obstruction without mention of hernia.....	550-553,560	1.1	1.3	1.1	1.1	1.2	1.0	1.7	2.2	1.4	2.0	2.5	1.6
Chronic liver disease and cirrhosis.....	571	10.2	14.3	6.6	9.5	13.4	6.0	14.7	20.5	10.0	16.2	22.8	10.8
Cholelithiasis and other disorders of gallbladder.....	574-575	0.7	0.8	0.6	0.6	0.8	0.5	0.8	0.8	0.8	0.8	0.8	0.8
Nephritis, nephrotic syndrome, and nephrosis.....	580-589	4.6	5.7	3.9	4.0	5.0	3.3	9.7	11.1	8.7	10.8	12.6	9.6
Acute glomerulonephritis and nephrotic syndrome.....	580-581	0.1	0.1	0.1	0.1	0.1	0.1	0.1	0.2	0.1	0.2	0.2	0.1
Chronic glomerulonephritis, nephritis and nephropathy, not specified as acute or chronic, and renal sclerosis, unspecified.....	582-583,587	0.5	0.5	0.4	0.4	0.5	0.4	1.0	1.3	0.9	1.1	1.5	0.9
Renal failure, disorders resulting from impaired renal function, and small kidney of unknown cause.....	584-586,588-589	4.0	5.0	3.4	3.5	4.4	2.8	8.5	9.7	7.7	9.5	10.9	8.5
Infections of kidney.....	590	0.5	0.4	0.5	0.4	0.4	0.5	0.7	0.6	0.7	0.8	0.7	0.8
Hyperplasia of prostate.....	600	0.1	0.3	...	0.1	0.3	...	0.2	0.4	...	0.2	0.5	...
Complications of pregnancy, childbirth, and the puerperium.....	630-676	0.1	...	0.3	0.1	...	0.2	0.3	...	0.6	0.4	...	0.7
Pregnancy with abortive outcome.....	630-638	0.0	...	0.0	0.0	...	0.0	0.1	...	0.1	0.1	...	0.2
Other complications of pregnancy, childbirth, and the puerperium.....	640-676	0.1	...	0.2	0.1	...	0.1	0.3	...	0.5	0.3	...	0.5
Congenital anomalies.....	740-759	5.5	5.8	5.1	5.4	5.7	5.0	5.8	6.3	5.4	6.3	6.7	5.8

Table 10. Age-adjusted death rates for 72 selected causes by race and sex: United States, 1983—Con.

[Rates per 100,000 population in specified group. Computed by the direct method, using as the standard population the age distribution of the total population of the United States as enumerated in 1940]

Cause of death (Ninth Revision International Classification of Diseases, 1975)	All races			White			All other					
							Total			Black		
	Both sexes	Male	Female	Both sexes	Male	Female	Both sexes	Male	Female	Both sexes	Male	Female
Certain conditions originating in the perinatal period. . . . . 760-779	8.1	9.0	7.1	6.6	7.4	5.7	14.6	16.0	13.0	16.9	18.7	15.1
Birth trauma, intrauterine hypoxia, birth asphyxia, and respiratory distress syndrome . . . . . 767-769	2.2	2.6	1.8	2.0	2.4	1.6	3.3	3.7	2.9	3.8	4.3	3.4
Other conditions originating in the perinatal period . . . . . 760-766,770-779	5.8	6.4	5.2	4.6	5.0	4.1	11.2	12.3	10.1	13.1	14.4	11.8
Symptoms, signs, and ill-defined conditions . . . . . 780-799	9.3	12.1	6.9	7.9	10.3	5.8	18.8	24.7	14.0	21.4	28.5	15.7
All other diseases. . . . . Residual	35.4	43.4	29.2	32.9	40.3	27.1	52.9	66.5	42.4	59.1	74.7	46.9
Accidents and adverse effects. . . . . E800-E949	35.3	52.9	18.7	34.7	51.8	18.3	40.2	62.5	21.0	42.1	66.2	21.9
Motor vehicle accidents. . . . . E810-E825	18.5	27.4	10.0	19.0	27.8	10.3	16.4	26.1	8.1	16.2	26.4	7.5
All other accidents and adverse effects. . . . . E800-E807, E826-E949	16.8	25.5	8.7	15.7	24.0	8.0	23.7	36.5	13.0	25.9	39.8	14.3
Suicide. . . . . E950-E959	11.4	18.2	5.2	12.2	19.3	5.6	6.4	10.7	2.6	6.0	10.5	2.1
Homicide and legal intervention . . . . . E960-E978	8.6	13.6	3.8	5.6	8.4	2.8	26.4	45.2	9.8	30.9	53.8	11.2
All other external causes . . . . . E980-E999	1.3	1.9	0.7	1.1	1.6	0.6	2.4	3.6	1.2	2.6	4.0	1.4

Table 11. Deaths under 1 year and infant mortality rates for 61 selected causes by race: United States, 1983

[Rates per 100,000 live births in specified group]

Cause of death (Ninth Revision International Classification of Diseases, 1975)	All races		All other		All races		All other	
	White	Black	Total	Black	White	Total	Black	
	Number				Rate			
All causes	40,627	28,301	12,326	11,242	1,116.5	974.5	1,677.7	1,918.3
Certain intestinal infections . . . . . 008-009	131	65	66	64	3.6	2.2	9.0	10.9
Whooping cough . . . . . 033	5	5	-	-	0.1	0.2	-	-
Meningococcal infection . . . . . 036	62	50	12	11	1.7	1.7	1.6	1.9
Septicemia . . . . . 038	303	199	104	96	8.3	6.9	14.2	16.4
Viral diseases . . . . . 045-079	146	102	44	31	4.0	3.5	6.0	5.3
Congenital syphilis . . . . . 090	7	3	4	4	0.2	0.1	0.5	0.7
Remainder of infectious and parasitic diseases . . . . . 001-007, 010-032,034-035,037,039-041,080-088,091-139	84	48	36	30	2.3	1.7	4.9	5.1
Malignant neoplasms, including neoplasms of lymphatic and hematopoietic tissues . . . . . 140-208	132	105	27	20	3.6	3.6	3.7	3.4
Benign neoplasms, carcinoma in situ, and neoplasms of uncertain behavior and of unspecified nature . . . . . 210-239	53	43	10	7	1.5	1.5	1.4	1.2
Diseases of thymus gland . . . . . 254	4	4	-	-	0.1	0.1	-	-
Cystic fibrosis . . . . . 277.0	28	25	3	2	0.8	0.9	0.4	0.3
Diseases of blood and blood-forming organs . . . . . 280-289	91	53	38	30	2.5	1.8	5.2	5.1
Meningitis . . . . . 320-322	318	203	115	106	8.7	7.0	15.7	18.1
Other diseases of nervous system and sense organs . . . . . 323-389	509	404	105	90	14.0	13.9	14.3	15.4
Acute upper respiratory infections . . . . . 460-465	62	46	16	15	1.7	1.6	2.2	2.6
Bronchitis and bronchiolitis . . . . . 466,490-491	123	80	43	34	3.4	2.8	5.9	5.8
Pneumonia and influenza . . . . . 480-487	769	465	304	279	21.1	16.0	41.4	47.6
Pneumonia . . . . . 480-486	763	460	303	278	21.0	15.8	41.2	47.4
Influenza . . . . . 487	6	5	1	1	0.2	0.2	0.1	0.2
Remainder of diseases of respiratory system . . . . . 470-478,492-519	502	346	156	142	13.8	11.9	21.2	24.2
Hernia of abdominal cavity and intestinal obstruction without mention of hernia . . . . . 550-553,560	105	74	31	30	2.9	2.5	4.2	5.1
Gastritis, duodenitis, and noninfective enteritis and colitis . . . . . 535,555-558	140	79	61	53	3.8	2.7	8.3	9.0
Remainder of diseases of digestive system . . . . . 520-534,536-543,562-579	214	156	58	50	5.9	5.4	7.9	8.5
Congenital anomalies . . . . . 740-759	8,732	7,026	1,706	1,443	240.0	241.9	232.2	246.2
Anencephalus and similar anomalies . . . . . 740	699	608	91	63	19.2	20.9	12.4	10.8
Spina bifida . . . . . 741	122	107	15	13	3.4	3.7	2.0	2.2
Congenital hydrocephalus . . . . . 742.3	227	172	55	50	6.2	5.9	7.5	8.5
Other congenital anomalies of central nervous system and eye . . . . . 742.0-742.2,742.4-742.9,743	323	258	65	58	8.9	8.9	8.8	9.9
Congenital anomalies of heart . . . . . 745-746	2,570	2,042	528	434	70.6	70.3	71.9	74.1
Other congenital anomalies of circulatory system . . . . . 747	923	686	237	216	25.4	23.6	32.3	36.9
Congenital anomalies of respiratory system . . . . . 748	907	725	182	155	24.9	25.0	24.8	26.4
Congenital anomalies of digestive system . . . . . 749-751	163	123	40	35	4.5	4.2	5.4	6.0
Congenital anomalies of genitourinary system . . . . . 752-753	498	430	68	61	13.7	14.8	9.3	10.4
Congenital anomalies of musculoskeletal system . . . . . 754-756	738	631	107	85	20.3	21.7	14.6	14.5
Down's syndrome . . . . . 758.0	84	64	20	18	2.3	2.2	2.7	3.1
Other chromosomal anomalies . . . . . 758.1-758.9	643	525	118	98	17.7	18.1	16.1	16.7
All other and unspecified congenital anomalies . . . . . 744,757,759	835	655	180	157	22.9	22.6	24.5	26.8
Certain conditions originating in the perinatal period . . . . . 760-779	19,157	12,715	6,442	6,051	526.4	437.8	876.8	1,032.5
Newborn affected by maternal conditions which may be unrelated to present pregnancy . . . . . 760	137	84	53	49	3.8	2.9	7.2	8.4
Newborn affected by maternal complications of pregnancy . . . . . 761	1,452	998	454	432	39.9	34.4	61.8	73.7
Newborn affected by complications of placenta, cord, and membranes . . . . . 762	869	631	238	213	23.9	21.7	32.4	36.3
Newborn affected by other complications of labor and delivery . . . . . 763	92	69	23	20	2.5	2.4	3.1	3.4
Slow fetal growth and fetal malnutrition . . . . . 764	43	34	9	9	1.2	1.2	1.2	1.5
Disorders relating to short gestation and unspecified low birthweight . . . . . 765	3,332	1,932	1,400	1,338	91.6	66.5	190.6	228.3
Disorders relating to long gestation and high birthweight . . . . . 766	-	-	-	-	-	-	-	-
Birth trauma . . . . . 767	445	337	108	99	12.2	11.6	14.7	16.9



Table 13. Total deaths and death rates, and infant and neonatal deaths and mortality rates for the United States, each division, and State; and by race and sex for the United States: 1983

Race, sex, and area	Total deaths		Infant deaths (under 1 year)		Neonatal deaths (under 28 days)	
	Number	Rate <sup>1</sup>	Number	Rate <sup>2</sup>	Number	Rate <sup>2</sup>
United States .....	2,019,201	862.8	40,627	11.2	26,507	7.3
Male .....	1,071,923	942.6	22,969	12.3	14,949	8.0
Female .....	947,278	787.4	17,658	10.0	11,558	6.5
White .....	1,765,582	884.6	28,301	9.7	18,603	6.4
Male .....	931,779	957.4	16,131	10.8	10,565	7.1
Female .....	833,803	815.3	12,170	8.6	8,038	5.7
All other .....	253,619	736.6	12,326	16.8	7,904	10.8
Male .....	140,144	854.9	6,838	18.3	4,384	11.7
Female .....	113,475	629.2	5,488	15.2	3,520	9.7
Black .....	233,124	830.5	11,242	19.2	7,277	12.4
Male .....	127,911	963.3	6,259	21.1	4,049	13.6
Female .....	105,213	711.2	4,983	17.2	3,228	11.2
New England .....	114,336	915.7	1,586	9.4	1,152	6.8
Maine .....	10,929	954.5	145	8.7	99	5.9
New Hampshire .....	7,973	832.3	119	8.6	80	5.8
Vermont .....	4,590	874.3	69	8.7	49	6.2
Massachusetts .....	54,291	942.1	690	9.1	490	6.4
Rhode Island .....	9,307	973.5	147	11.7	114	9.1
Connecticut .....	27,246	868.0	416	10.1	320	7.8
Middle Atlantic .....	360,633	974.3	5,793	11.4	3,958	7.8
New York .....	169,885	961.8	2,872	11.6	1,946	7.8
New Jersey .....	69,289	928.3	1,137	11.5	769	7.8
Pennsylvania .....	121,459	1,021.6	1,784	11.3	1,243	7.9
East North Central .....	365,453	881.1	7,189	11.5	4,811	7.7
Ohio .....	97,551	908.6	1,775	11.2	1,217	7.7
Indiana .....	47,747	872.6	923	11.4	610	7.5
Illinois .....	102,438	892.8	2,224	12.4	1,464	8.2
Michigan .....	76,684	847.3	1,569	11.8	1,062	8.0
Wisconsin .....	41,033	864.6	698	9.6	458	6.3
West North Central .....	159,843	918.0	2,760	10.0	1,761	6.4
Minnesota .....	33,937	818.9	644	9.8	409	6.2
Iowa .....	27,528	947.9	386	8.9	244	5.6
Missouri .....	49,525	997.9	810	10.7	542	7.2
North Dakota .....	5,576	818.8	110	8.9	75	6.1
South Dakota .....	6,628	948.2	135	10.8	73	5.8
Nebraska .....	14,718	922.2	259	9.9	171	6.5
Kansas .....	21,931	904.0	416	10.3	247	6.1
South Atlantic .....	345,472	889.2	7,156	12.7	4,752	8.4
Delaware .....	5,012	827.1	92	10.0	63	6.8
Maryland .....	35,056	815.4	752	11.8	521	8.1
District of Columbia .....	6,764	1,085.7	180	19.3	132	14.1
Virginia .....	43,743	787.3	962	11.9	671	8.3
West Virginia .....	19,325	985.0	283	10.9	182	7.0
North Carolina .....	50,208	826.3	1,106	13.2	731	8.7
South Carolina .....	26,164	803.6	760	15.0	497	9.8
Georgia .....	46,005	802.6	1,205	13.4	811	9.0
Florida .....	113,195	1,053.8	1,816	12.2	1,144	7.7
East South Central .....	135,347	906.5	2,907	13.0	1,877	8.4
Kentucky .....	34,224	921.7	632	11.6	431	7.9
Tennessee .....	41,621	890.1	836	12.8	549	8.4
Alabama .....	35,560	897.8	774	13.1	489	8.3
Mississippi .....	23,942	927.6	665	15.1	408	9.3
West South Central .....	203,814	788.3	5,371	11.4	3,381	7.2
Arkansas .....	23,154	995.9	373	10.7	216	6.2
Louisiana .....	36,409	820.0	1,115	13.5	741	9.0
Oklahoma .....	29,438	889.4	618	10.9	389	6.8
Texas .....	114,813	727.6	3,265	11.1	2,035	6.9
Mountain .....	83,352	675.0	2,265	9.7	1,305	5.6
Montana .....	6,713	823.7	126	9.0	60	4.3
Idaho .....	7,241	733.6	203	10.8	109	5.8
Wyoming .....	3,161	612.6	101	9.8	52	5.1
Colorado .....	19,549	621.4	548	10.0	322	5.9

See footnotes at end of table.

Table 13. Total deaths and death rates, and infant and neonatal deaths and mortality rates for the United States, each division, and State; and by race and sex for the United States: 1983—Con.

<i>Race, sex, and area</i>	<i>Total deaths</i>		<i>Infant deaths (under 1 year)</i>		<i>Neonatal deaths (under 28 days)</i>	
	<i>Number</i>	<i>Rate<sup>1</sup></i>	<i>Number</i>	<i>Rate<sup>2</sup></i>	<i>Number</i>	<i>Rate<sup>2</sup></i>
Mountain—Con.						
New Mexico .....	9,205	658.0	277	10.0	153	5.5
Arizona .....	22,593	760.7	511	9.5	314	5.8
Utah .....	8,512	526.1	346	8.8	212	5.4
Nevada .....	6,378	711.0	153	10.7	83	5.8
Pacific .....	250,951	745.9	5,600	9.7	3,510	6.1
Washington .....	32,668	759.4	653	9.5	372	5.4
Oregon .....	22,462	845.1	385	9.6	216	5.4
California .....	188,442	748.2	4,233	9.7	2,722	6.2
Alaska .....	1,897	394.4	149	12.4	79	6.6
Hawaii .....	5,482	538.5	180	9.4	121	6.3

<sup>1</sup>Per 100,000 population in each race-sex group and area.  
<sup>2</sup>Per 1,000 live births in each race-sex group and area.

NOTE: Caution should be used in comparing crude death rates by State. Death rates are affected by the population composition of the area.



**Table 14. Deaths and death rates for major causes of death for the United States, each division, and State; and by race and sex for the United States: 1983**

[Rates per 100,000 population in each race-sex group and area. Numbers after causes of death are category numbers of the *Ninth Revision International Classification of Diseases, 1975*]

Race, sex, and area	Diseases of heart (390-398,402, 404-429)		Malignant neoplasms, including neoplasms of lymphatic and hematopoietic tissues (140-208)		Cerebrovascular diseases (430-438)		Accidents and adverse effects (E800-E949)		Motor vehicle accidents (E810-E825)		Suicide (E950-E959)	
	Number	Rate	Number	Rate	Number	Rate	Number	Rate	Number	Rate	Number	Rate
United States . . . . .	770,432	329.2	442,986	189.3	155,598	66.5	92,488	39.5	44,452	19.0	28,295	12.1
Male . . . . .	402,727	354.1	238,383	209.6	62,847	55.3	63,902	56.2	31,907	28.1	21,786	19.2
Female . . . . .	367,705	305.7	204,603	170.1	92,751	77.1	28,586	23.8	12,545	10.4	6,509	5.4
White . . . . .	689,749	345.6	390,009	195.4	135,596	67.9	78,607	39.4	38,864	19.5	26,157	13.1
Male . . . . .	360,951	370.9	208,053	213.8	53,968	55.5	54,074	55.6	27,781	28.5	20,097	20.6
Female . . . . .	328,798	321.5	181,956	177.9	81,628	79.8	24,533	24.0	11,083	10.8	6,060	5.9
All other . . . . .	80,683	234.3	52,977	153.9	20,002	58.1	13,881	40.3	5,588	16.2	2,138	6.2
Male . . . . .	41,776	254.8	30,330	185.0	8,879	54.2	9,828	60.0	4,126	25.2	1,689	10.3
Female . . . . .	38,907	215.7	22,647	125.6	11,123	61.7	4,053	22.5	1,462	8.1	449	2.5
Black . . . . .	75,008	267.2	48,754	173.7	18,562	66.1	11,883	42.3	4,472	15.9	1,623	5.8
Male . . . . .	38,311	288.5	27,946	210.5	8,139	61.3	8,385	63.1	3,349	25.2	1,321	9.9
Female . . . . .	36,697	248.1	20,808	140.7	10,423	70.5	3,498	23.6	1,123	7.6	302	2.0
New England . . . . .	44,286	354.7	27,249	218.2	8,035	64.4	4,189	33.5	1,788	14.3	1,234	9.9
Maine . . . . .	4,178	364.9	2,512	219.4	794	69.3	444	38.8	233	20.3	159	13.9
New Hampshire . . . . .	2,994	312.5	1,846	192.7	617	64.4	339	35.4	193	20.1	109	11.4
Vermont . . . . .	1,703	324.4	1,035	197.1	325	61.9	233	44.4	94	17.9	74	14.1
Massachusetts . . . . .	21,234	368.5	12,931	224.4	3,714	64.4	1,905	33.1	756	13.1	531	9.2
Rhode Island . . . . .	3,739	391.1	2,293	239.9	645	67.5	249	26.0	101	10.6	99	10.4
Connecticut . . . . .	10,438	332.5	6,632	211.3	1,940	61.8	1,019	32.5	411	13.1	262	8.3
Middle Atlantic . . . . .	151,997	410.6	80,906	218.6	23,616	63.8	11,805	31.9	5,085	13.7	3,262	8.8
New York . . . . .	73,868	418.2	37,309	211.2	10,411	58.9	5,374	30.4	2,237	12.7	1,354	7.7
New Jersey . . . . .	28,218	378.1	16,600	222.4	4,796	64.3	2,228	29.8	1,004	13.5	564	7.6
Pennsylvania . . . . .	49,911	419.8	26,997	227.1	8,409	70.7	4,203	35.4	1,844	15.5	1,344	11.3
East North Central . . . . .	145,651	351.2	80,458	194.0	28,268	68.2	13,988	33.7	6,547	15.8	4,666	11.2
Ohio . . . . .	38,763	361.1	22,069	205.6	7,259	67.6	3,584	33.4	1,626	15.1	1,188	11.1
Indiana . . . . .	18,201	332.6	10,271	187.7	4,144	75.7	2,095	38.3	1,056	19.3	638	11.7
Illinois . . . . .	41,849	364.7	22,359	194.9	7,740	67.5	3,780	32.9	1,688	14.7	1,142	10.0
Michigan . . . . .	30,427	336.2	16,797	185.6	5,725	63.3	2,964	32.8	1,420	15.7	1,081	11.9
Wisconsin . . . . .	16,411	345.8	8,962	188.8	3,400	71.6	1,565	33.0	757	16.0	617	13.0
West North Central . . . . .	60,977	350.2	33,938	194.9	13,698	78.7	6,887	39.6	3,118	17.9	2,046	11.7
Minnesota . . . . .	12,555	303.0	7,284	175.8	3,095	74.7	1,493	36.0	612	14.8	444	10.7
Iowa . . . . .	11,041	380.2	5,977	205.8	2,328	80.2	1,115	38.4	543	18.7	326	11.2
Missouri . . . . .	18,538	373.5	10,617	213.9	4,107	82.8	2,114	42.6	933	18.8	682	13.7
North Dakota . . . . .	2,159	317.0	1,198	175.9	476	69.9	265	38.9	127	18.6	67	9.8
South Dakota . . . . .	2,725	389.8	1,310	187.4	550	78.7	348	49.8	179	25.6	84	12.0
Nebraska . . . . .	5,627	352.6	2,956	185.2	1,381	86.5	589	36.9	269	16.9	147	9.2
Kansas . . . . .	8,332	343.4	4,596	189.4	1,761	72.6	963	39.7	455	18.8	296	12.2
South Atlantic . . . . .	129,190	332.5	76,478	196.8	27,834	71.6	16,844	43.4	8,363	21.5	5,057	13.0
Delaware . . . . .	1,967	324.6	1,213	200.2	283	46.7	211	34.8	113	18.6	66	10.9
Maryland . . . . .	13,132	305.5	8,464	196.9	2,256	52.5	1,430	33.3	680	15.8	496	11.5
District of Columbia . . . . .	2,210	354.7	1,520	244.0	401	64.4	255	40.9	76	12.2	67	10.8
Virginia . . . . .	16,156	290.8	9,959	179.2	3,496	62.9	2,063	37.1	920	16.6	717	12.9
West Virginia . . . . .	7,880	401.6	3,986	203.2	1,459	74.4	830	42.3	431	22.0	251	12.8
North Carolina . . . . .	18,817	309.7	10,368	170.6	4,541	74.7	2,756	45.4	1,285	21.1	748	12.3
South Carolina . . . . .	9,673	297.1	5,240	160.9	2,332	71.6	1,719	52.8	860	26.4	330	10.1
Georgia . . . . .	16,573	289.1	9,197	160.5	4,268	74.5	2,757	48.1	1,373	24.0	652	11.4
Florida . . . . .	42,782	398.3	26,531	247.0	8,798	81.9	4,823	44.9	2,625	24.4	1,730	16.1
East South Central . . . . .	49,363	330.6	28,080	188.1	12,080	80.9	7,522	50.4	3,637	24.4	1,764	11.8
Kentucky . . . . .	13,178	354.9	7,316	197.0	2,805	75.5	1,769	47.6	817	22.0	484	13.0
Tennessee . . . . .	15,313	327.5	8,709	186.2	4,105	87.8	2,196	47.0	1,071	22.9	602	12.9
Alabama . . . . .	12,447	314.2	7,463	188.4	3,094	78.1	2,025	51.1	1,033	26.1	425	10.7
Mississippi . . . . .	8,425	326.4	4,592	177.9	2,076	80.4	1,532	59.4	716	27.7	253	9.8

Table 14. Deaths and death rates for major causes of death for the United States, each division, and State; and by race and sex for the United States: 1983—Con.

[Rates per 100,000 population in each race-sex group and area. Numbers after causes of death are category numbers of the *Ninth Revision International Classification of Diseases, 1975*]

Race, sex, and area	Diseases of heart (390-398,402, 404-429)		Malignant neoplasms, including neoplasms of lymphatic and hematopoietic tissues (140-208)		Cerebrovascular diseases (430-438)		Accidents and adverse effects (E800-E949)		Motor vehicle accidents (E810-E825)		Suicide (E950-E959)	
	Number	Rate	Number	Rate	Number	Rate	Number	Rate	Number	Rate	Number	Rate
West South Central . . . . .	72,969	282.2	41,922	162.1	16,504	63.8	12,242	47.4	6,312	24.4	3,311	12.8
Arkansas . . . . .	8,617	370.6	4,902	210.8	2,203	94.8	1,162	50.0	565	24.3	277	11.9
Louisiana . . . . .	13,266	298.8	7,670	172.7	2,825	63.6	2,115	47.6	980	22.1	584	13.2
Oklahoma . . . . .	11,113	335.7	6,068	183.3	2,513	75.9	1,712	51.7	899	27.2	436	13.2
Texas . . . . .	39,973	253.3	23,282	147.6	8,963	56.8	7,253	46.0	3,868	24.5	2,014	12.8
Mountain . . . . .	27,445	222.3	17,105	138.5	5,584	45.2	5,815	47.1	3,078	24.9	2,142	17.3
Montana . . . . .	2,245	275.5	1,348	165.4	509	62.5	532	65.3	271	33.3	139	17.1
Idaho . . . . .	2,497	253.0	1,445	146.4	557	56.4	522	52.9	251	25.4	158	16.0
Wyoming . . . . .	1,001	194.0	587	113.8	194	37.6	293	56.8	162	31.4	105	20.3
Colorado . . . . .	6,430	204.4	3,900	124.0	1,250	39.7	1,298	41.3	682	21.7	569	18.1
New Mexico . . . . .	2,588	185.0	1,855	132.6	576	41.2	808	57.8	489	35.0	248	17.7
Arizona . . . . .	7,655	257.7	5,027	169.3	1,457	49.1	1,340	45.1	695	23.4	500	16.8
Utah . . . . .	2,940	181.7	1,482	91.6	632	39.1	628	38.8	301	18.6	212	13.1
Nevada . . . . .	2,089	232.9	1,461	162.9	409	45.6	394	43.9	227	25.3	211	23.5
Pacific . . . . .	88,554	263.2	56,850	169.0	19,979	59.4	13,196	39.2	6,524	19.4	4,813	14.3
Washington . . . . .	11,687	271.7	7,284	169.3	2,581	60.0	1,666	38.7	783	18.2	616	14.3
Oregon . . . . .	7,986	300.5	4,949	186.2	2,008	75.5	1,186	44.6	588	22.1	412	15.5
California . . . . .	66,752	265.0	42,952	170.5	14,891	59.1	9,607	38.1	4,873	19.3	3,635	14.4
Alaska . . . . .	371	77.1	370	76.9	70	14.6	427	88.8	138	28.7	56	11.6
Hawaii . . . . .	1,758	172.7	1,295	127.2	429	42.1	310	30.5	142	13.9	94	9.2

NOTE: Caution should be used in comparing crude death rates by State. Death rates are affected by the population composition of the area.

## Technical notes

### Nature and sources of data

Data shown in this report are based on information from all death certificates filed in the 50 States and the District of Columbia.

Mortality statistics are based on information coded by the National Center for Health Statistics (NCHS) from copies of the original certificates received from the State registration offices, and on State-coded data provided to NCHS through the Vital Statistics Cooperative Program (VSCP). In 1983, 46 States participated in this program. For these States part or all of the mortality data for 1983 were provided on computer tape to NCHS. The following 16 States in the VSCP submitted precoded medical and nonmedical data for all deaths on computer tape: Colorado, Iowa, Kansas, Louisiana, Maine, Massachusetts, Michigan, Minnesota, Mississippi, Nebraska, New Hampshire, North Carolina, Pennsylvania, South Carolina, Virginia, and Wisconsin. The remaining 30 VSCP States submitted precoded nonmedical data for all deaths along with copies of the original certificates from which NCHS coded the medical data: Alabama, Alaska, Arkansas, Connecticut, Florida, Hawaii, Idaho, Illinois, Indiana, Kentucky, Maryland, Missouri, Montana, Nevada, New Jersey, New Mexico, New York, North Dakota, Ohio, Oklahoma, Oregon, Rhode Island, South Dakota, Tennessee, Texas, Utah, Vermont, Washington, West Virginia, and Wyoming. For the four States and the District of Columbia which were not participants in the VSCP in 1983, NCHS coded all the nonmedical data and all or part of the medical data.

Data for the United States as a whole refer to events occurring within the United States. Data shown for geographic areas are by place of residence. Beginning with 1970, mortality statistics exclude deaths of nonresidents of the United States. All data exclude fetal deaths.

### Cause-of-death classification

The mortality statistics presented here were compiled in accordance with the World Health Organization regulations, which specify that member nations classify causes of death by the current *Manual of the International Statistical Classification of Disease, Injuries, and Causes of Death*.<sup>2</sup>

Causes of death for 1979–83 were classified according to the *Ninth Revision International Classification of Diseases*.<sup>2</sup> For earlier years causes of death were classified according to the revisions then in use, as follows: 1968–78, Eighth Revision; 1958–67, Seventh Revision; and 1949–57, Sixth Revision. Changes in classification of causes of death due to these revisions may result in discontinuities in cause-of-death trends. Conse-

quently, cause-of-death comparisons between revisions require consideration of the comparability ratios and, where available, estimates of their standard errors. Comparability ratios between the Eighth and Ninth Revisions, between the Seventh and Eighth Revisions, and between the Sixth and Seventh Revisions may be found in other NCHS reports.<sup>3–5</sup>

Besides specifying the classification, the World Health Organization regulations outline the form of medical certification and the coding procedures to be used. In general, when more than one cause of death is reported, the cause designated by the certifying physician as the underlying cause of death is the cause tabulated.

Cause-of-death data presented in this publication were coded by procedures outlined in issues of Part 2a of the *NCHS Instruction Manual*.<sup>6</sup>

### Population bases for computing rates

The population used for computing rates shown in this report (furnished by the U.S. Bureau of the Census) represents the population residing in the specified area. Death rates for 1983 are based on populations estimated as of July 1, 1983.<sup>7,8</sup> The estimates are based on the 1980 census count. The 1980 census counts by race were modified to be consistent with Office of Management and Budget categories and historical categories for death data. The modification procedures are discussed in detail in a report of the U.S. Bureau of the Census.<sup>9</sup>

### Cause-of-death rankings

The cause-of-death rankings shown in tables B–D are based on the List of 72 Selected Causes of Death; the cause-of-death ranking for infants in table 4 is based on the List of 61 Selected Causes of Infant Death.

The group titles Major cardiovascular diseases and Symptoms, signs, and ill-defined conditions are not ranked from the List of 72 Selected Causes; Certain conditions originating in the perinatal period and Symptoms, signs, and ill-defined conditions are not ranked from the List of 61 Selected Causes of Infant Death. In addition, category titles that begin with the words “Other” or “All other” are not ranked to determine the leading causes of death. When one of the titles that represents a subtotal is ranked (for example, Tuberculosis), its component parts (in this case, Tuberculosis of respiratory system and Other tuberculosis) are not ranked.

### Age-adjusted rates

The age-adjusted rates presented in this report were computed by the direct method, that is, by applying the age-specific

NOTE: A list of references follows the text.

death rates for a given cause of death to the standard population distributed by age. The total population as enumerated in 1940 was selected as the standard. The rates for the total population and for each race-sex group were adjusted separately, by using the same standard population. The age-adjusted rates were based on 10-year age groups. It is important not to compare age-adjusted death rates with crude rates.

### Life tables

U.S. abridged life tables are constructed by reference to a standard life table.<sup>10</sup> Life table values for 1980-82 appearing in this publication have been revised using life tables for the decennial period 1979-81 as the standard life tables; therefore, these figures may differ from those previously published.

NOTE: A list of references follows the text.

This report presents summary tabulations from the final mortality statistics for 1983. More detailed tabulations for 1983 will be published in *Vital Statistics of the United States, 1983, Volume II—Mortality*. Prior to the publication of that volume, the National Center for Health Statistics will respond to requests for unpublished data whenever possible.

---

#### Suggested Citation

National Center for Health Statistics: Advance report of final mortality statistics, 1983. *Monthly Vital Statistics Report*. Vol. 34, No. 6 Supp. (2) DHHS Pub. No. (PHS) 85-1120. Public Health Service, Hyattsville, Md., Sept. 26, 1985.

---

#### Copyright Information

This report may be reprinted without further permission.

---

U.S. DEPARTMENT OF HEALTH AND  
HUMAN SERVICES  
Public Health Service  
National Center for Health Statistics  
3700 East-West Highway  
Hyattsville, Maryland 20782

FIRST CLASS MAIL  
POSTAGE & FEES PAID  
PHS/NCHS  
PERMIT No. G-281

---

OFFICIAL BUSINESS  
PENALTY FOR PRIVATE USE, \$300

---

To receive this publication regularly, contact the National Center for Health Statistics by calling 301 436-8500

---