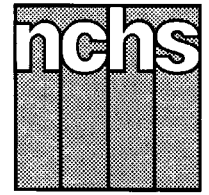


Monthly Vital Statistics Report



Provisional Data From the CENTERS FOR DISEASE CONTROL AND PREVENTION/National Center for Health Statistics

Births, Marriages, Divorces, and Deaths for January 1997

Births

According to provisional reports, an estimated 301,000 births occurred in the United States during January 1997. This was a 5-percent decrease from the provisional number of births reported for January 1996 (318,000). The birth rate, 13.3 live births per 1,000 population, was 6 percent lower than the rate of 14.2 for January 1996. The fertility rate, 59.5 live births per 1,000 women 15–44 years, was 6 percent lower than the comparable rate for January 1996 (63.2). The seasonally adjusted fertility rate (62.4) was also 6 percent lower than the comparable rate for January 1996 (66.3).

An estimated 3,882,000 live births occurred in the 12-month period ending with January 1997, a 1-percent increase from the 3,861,000 births reported for the same period a year earlier. The birth rate of 14.6 was 1 percent lower than the rate of 14.7 for the preceding 12-month period. The fertility rate for the most recent 12-month period was 65.1, slightly higher than the rate for the 12 months ending with January 1996 (64.9). This combination of slightly changed rates points to a slow-down of the generally downward trend observed since early 1991.

Natural increase

As a result of natural increase, the excess of births over deaths, an estimated 84,000 people, or 3.7 persons per 1,000 population, were added to the population during January 1997.

For the 12-month period ending with January 1997, 1,574,000 persons were added to the population. This represented a rate of natural increase of 5.9, the same as for the preceding 12-month period. The unchanged rate of natural increase was due to similar decreases in the birth rate and death rate.

Provisional Vital Statistics for the United States

[Rates for infant deaths are deaths under 1 year per 1,000 live births; fertility rates are live births per 1,000 women aged 15–44 years; all other rates are per 1,000 total population. Data are subject to monthly reporting variation; see [Technical notes](#)]

Item	January				12 months ending with January				
	Number		Rate		Number		Rate		
	1997	1996	1997	1996	1997	1996	1997	1996	1995
Live births	301,000	318,000	13.3	14.2	3,882,000	3,861,000	14.6	14.7	15.2
Fertility rate	59.5	63.2	65.1	64.9	67.0
Deaths	217,000	220,000	9.6	9.8	2,308,000	2,309,000	8.7	8.8	8.7
Infant deaths	2,100	2,400	6.8	7.4	27,800	29,000	7.2	7.5	8.0
Natural increase	84,000	98,000	3.7	4.4	1,574,000	1,552,000	5.9	5.9	6.5
Marriages	106,000	100,000	4.9	4.6	2,351,000	2,324,000	8.9	8.8	9.1
Divorces	92,000	94,000	4.1	4.2	1,148,000	1,167,000	4.3	4.4	4.6
Population base (in millions)	266.5	264	265.4	263	260.9

... Category not applicable.

NOTES: Figures include revisions received from the States Twelve-month figures for the current year reflect revisions received for previous months, and figures for earlier years may differ from those previously published.



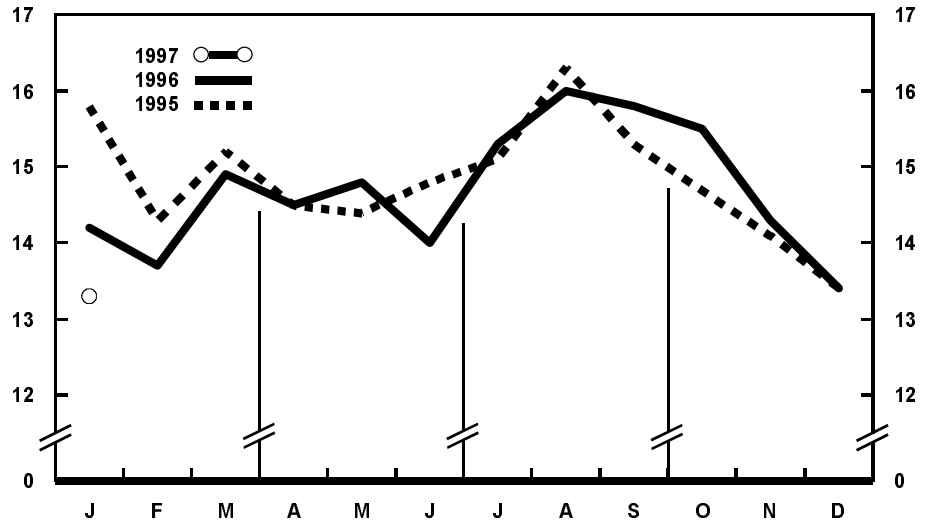
U.S. DEPARTMENT OF HEALTH AND HUMAN SERVICES
Centers for Disease Control and Prevention
National Center for Health Statistics



Marriages

The provisional number of marriages for January 1997 was 106,000, 6 percent more than for January a year earlier (100,000). The marriage rate for January was 4.9 per 1,000 population, a 7-percent increase over the comparable rate in 1996 (4.6). January typically has the lowest marriage rate of any month.

Marriages performed during the 12-month period ending with January 1997 numbered 2,351,000, a 1-percent increase compared with the same period a year earlier (2,324,000). The marriage rate for the current 12-month period (8.9) was 1 percent more than the rate for the period ending with January 1996 (8.8).

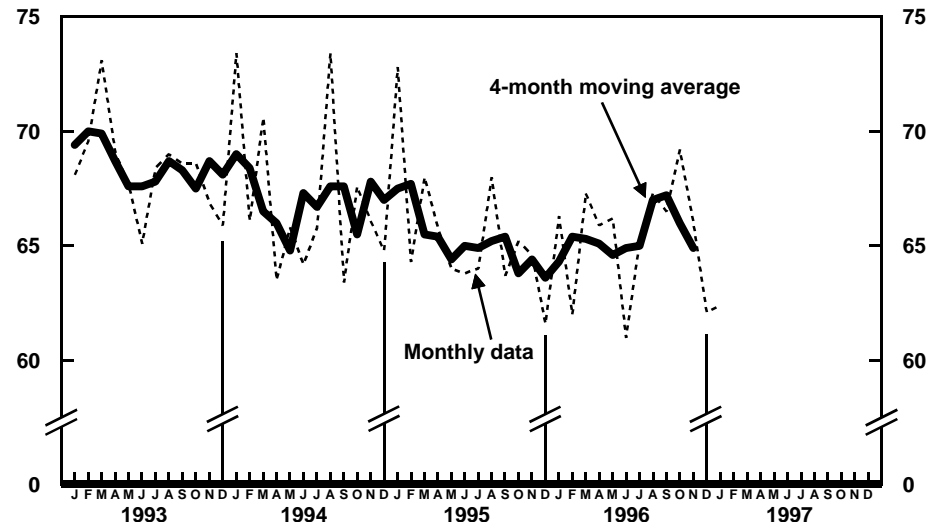


Provisional birth rates per 1,000 population by month: United States, 1995-97

Divorces

The estimated number of divorces granted in January 1997 (92,000) was 2 percent fewer than the number granted for January 1996 (94,000). The divorce rate per 1,000 population for January was 4.1, a 2-percent drop from the comparable rate in 1996 (4.2).

The cumulative number of divorces for the 12-month period ending with January 1997 (1,148,000) was 2 percent lower than the number for the same period ending with January 1996 (1,167,000). The divorce rate for the current 12-month period (4.3) was also 2 percent lower than the rate for the comparable period a year earlier (4.4).

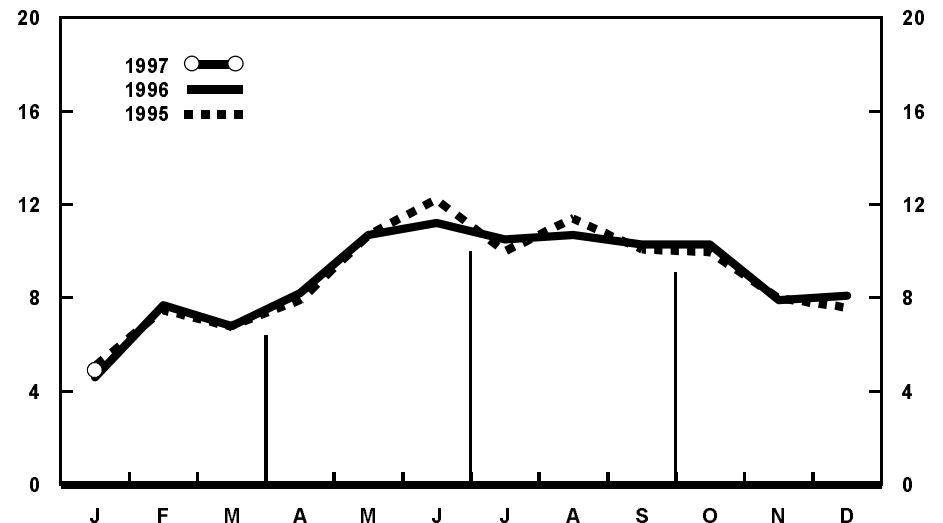


Provisional seasonally adjusted fertility rates per 1,000 women aged 15-44 years: United States, 1993-97

Deaths

For January 1997 there were an estimated 217,000 deaths in the United States. The death rate was 9.6 deaths per 1,000 population, 2 percent lower than the rate for January a year earlier (9.8). Among the 217,000 deaths for January 1997 were 2,100 deaths at ages under 1 year.

According to provisional statistics, the death rate for the 12 months ending with January 1997 was 8.7 deaths per 1,000 population, 1 percent lower than the rate of 8.8 for the comparable 12-month period a year earlier. The infant mortality rate for this 12-month period was 7.2 per 1,000 live births, 4 percent lower than the rate of 7.5 for the 12 months ending with January 1996.



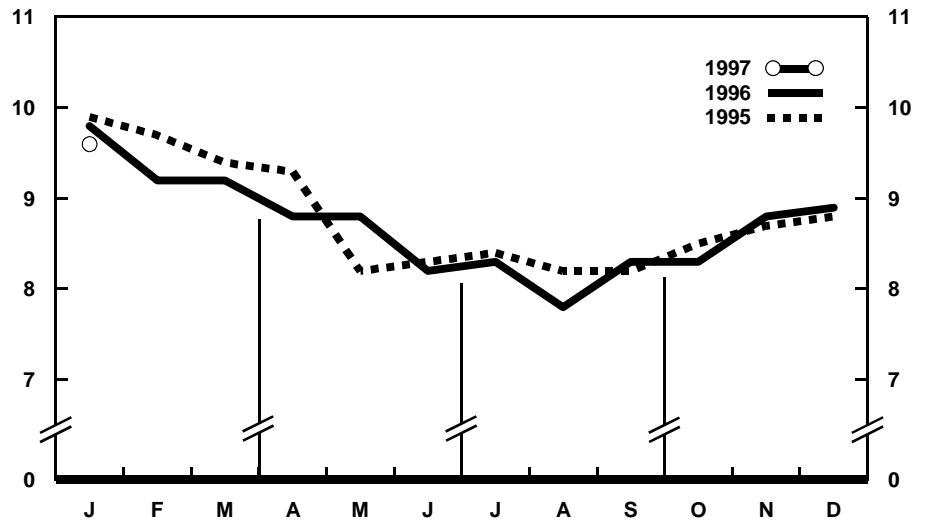
Provisional marriage rates per 1,000 population by month: United States, 1995-97

Mortality for 1996

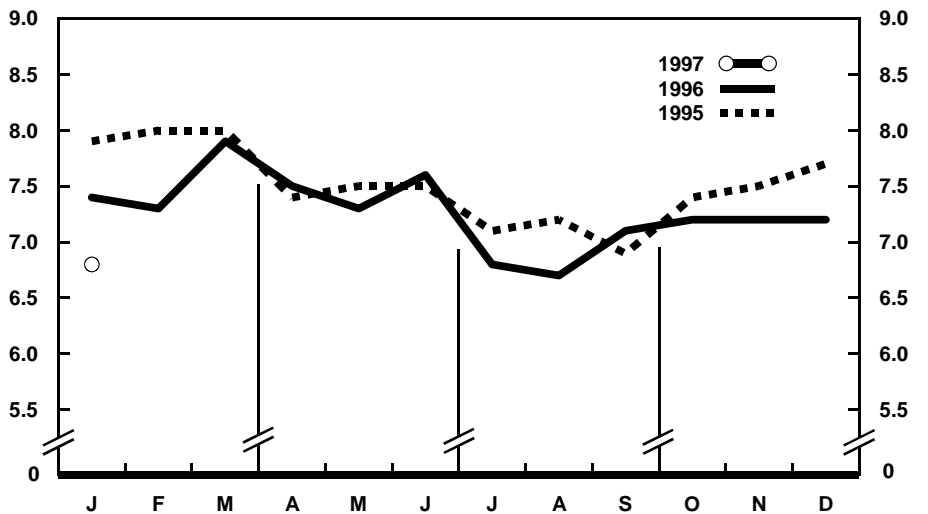
Provisional mortality data based on the Current Mortality Sample (a 10-percent sample of the death certificates) are now available for the entire year. The provisional death rate per 100,000 population for 1996 was 871.5, slightly lower than the rate of 878.6 for 1995. The provisional age-adjusted death rate for 1996 was 492.5 per 100,000 U.S. standard population, 2 percent lower than the rate of 503.0 for 1995. Age-adjusted death rates control for changes and variations in the age composition of the population; therefore, they are better indicators than crude rates for showing changes in mortality risk over time and for showing differences between race-sex groups within the population. Among the race-sex groups, the estimated age-adjusted death rate decreased for white males, black males, and black females. By age the death rate for the total population decreased for the following age groups: 1–4 years, 25–34 years, 35–44 years, 45–54 years, and 75–84 years of age.

Among the major causes of death, the estimated death rate was lower in 1996 than in 1995 for Human immunodeficiency virus infection and for Homicide and legal intervention. The decrease for Homicide and legal intervention was largely due to the decline in the rate for homicide by firearms. The death rate was higher for Alzheimer’s disease. The increase for Alzheimer’s disease may reflect changes in diagnostic practices rather than real increases in mortality from this cause.

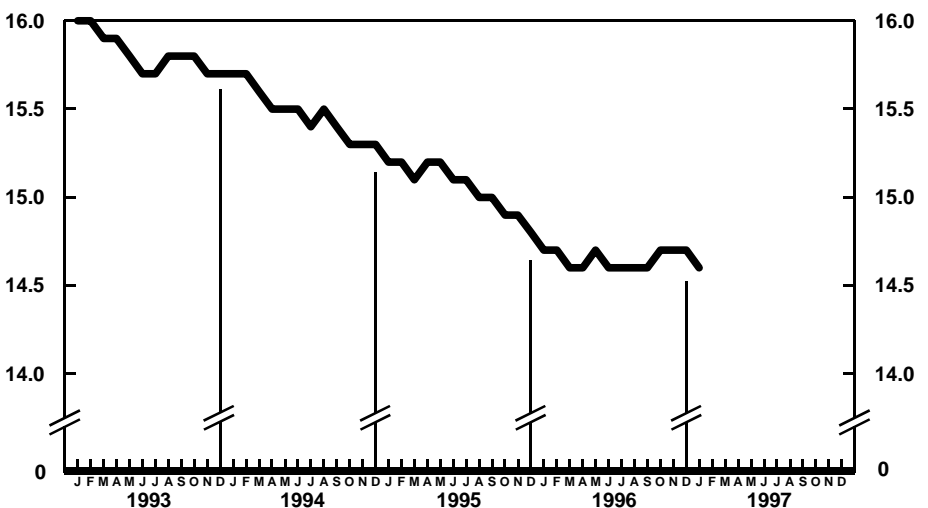
The infant mortality rate for 1996 was 722.5 per 100,000 live births, 4 percent lower than the rate of 755.6 for 1995. For 1996 the estimated infant mortality rate for infants under 28 days of age was 475.2 compared with a rate of 481.4 for 1995. The change in the mortality rate for infants aged under 28 days was not statistically significant. The infant mortality rate for infants aged 28 days–11 months was 247.2, 9 percent lower than the rate for 1995 (272.8). Among causes of infant death, changes in the infant mortality rate between 1995 and 1996 were not statistically significant.



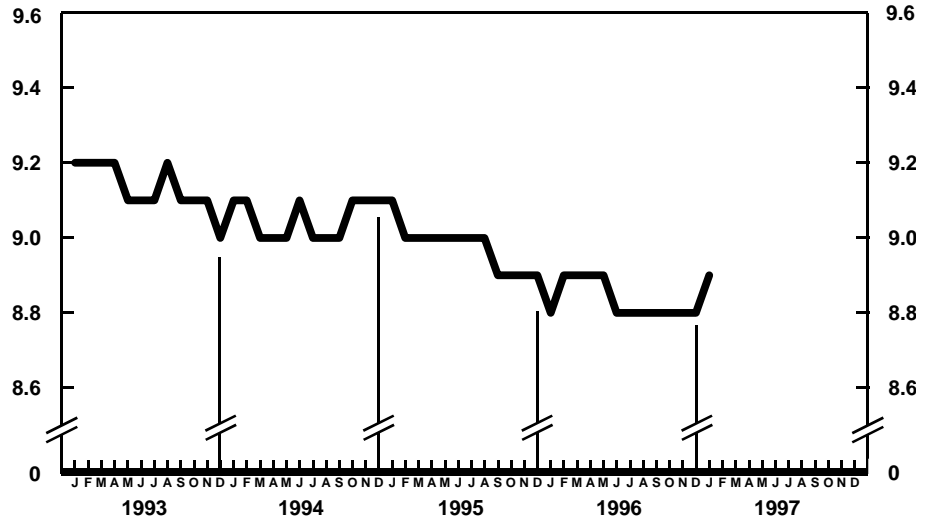
Provisional death rates per 1,000 population by month: United States, 1995–97



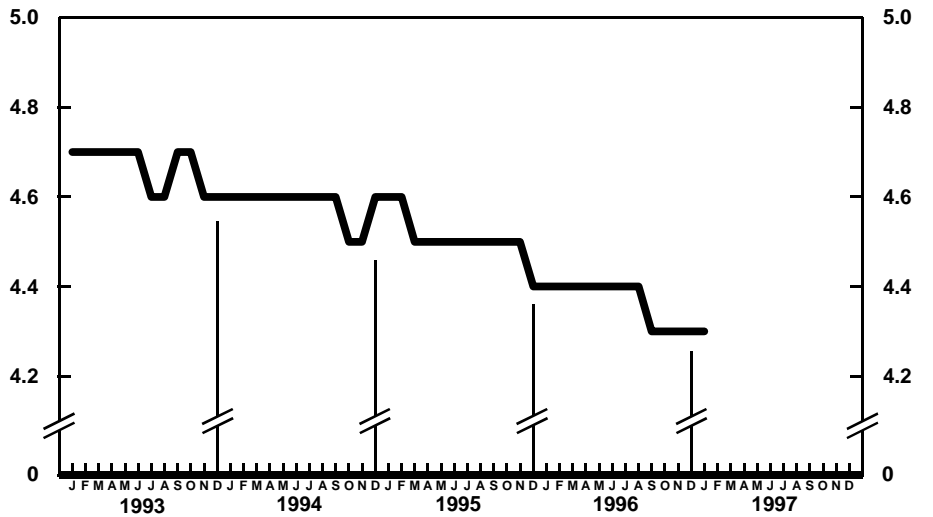
Provisional infant mortality rates per 1,000 live births by month: United States, 1995–97



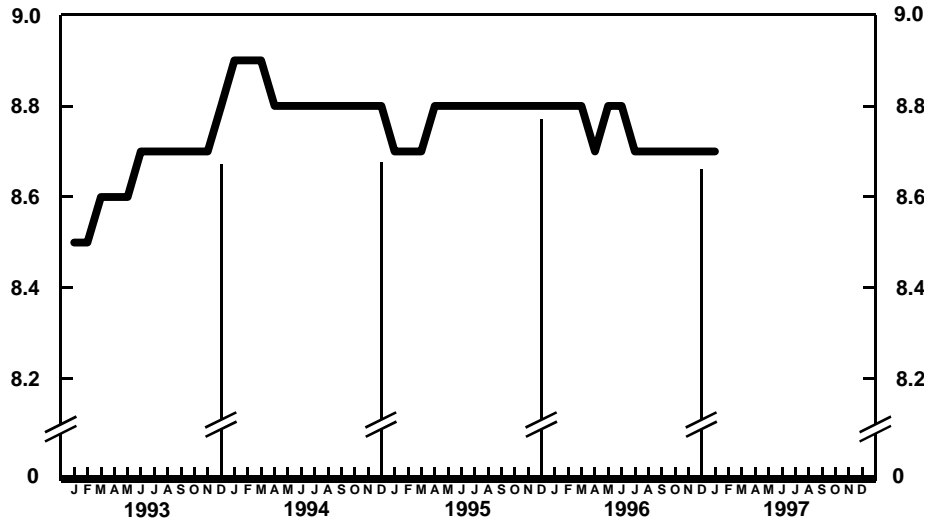
Provisional birth rates per 1,000 population for successive 12-month periods ending with month indicated: United States, 1993–97



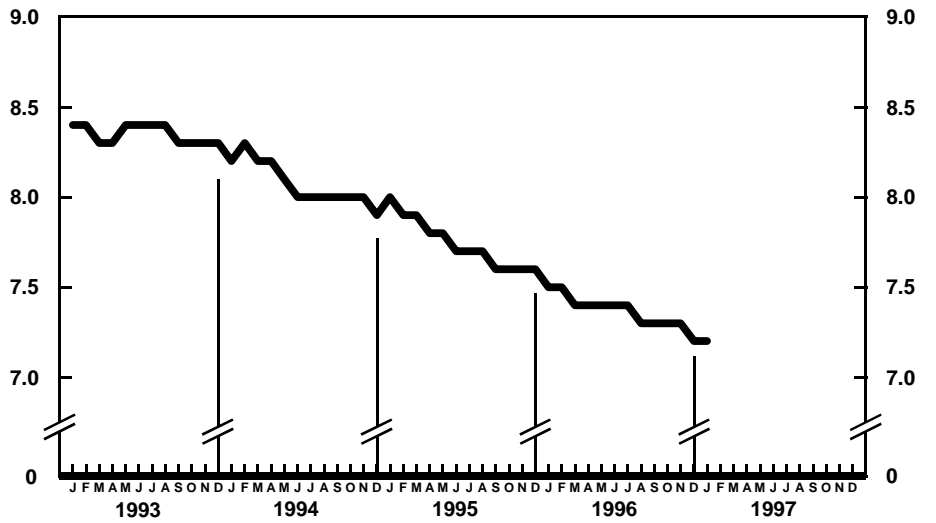
Provisional marriage rates per 1,000 population for successive 12-month periods ending with month indicated: United States, 1993-97



Provisional divorce rates per 1,000 population for successive 12-month periods ending with month indicated: United States, 1993-97



Provisional death rates per 1,000 population for successive 12-month periods ending with month indicated: United States, 1993-97



Provisional infant mortality rates per 1,000 live births for successive 12-month periods ending with month indicated: United States, 1993-97

Table 1. Provisional number of live births, marriages, divorces, deaths, and infant deaths and rates, by month: United States, January 1996–January 1997[Data are provisional and are subject to monthly reporting variation; see [Technical notes](#)]

Period	Live births				Marriages		Divorces		Deaths		Infant deaths	
	Number	Rate per 1,000 population	Rate per 1,000 women aged 15–44 years		Number	Rate per 1,000 population	Number	Rate per 1,000 population	Number	Rate per 1,000 population	Number	Rate per 1,000 live births
			Unadjusted	Seasonally adjusted ¹								
1996:												
January	318,000	14.2	63.2	66.3	100,000	4.6	94,000	4.2	220,000	9.8	2,400	7.4
February	286,000	13.7	60.7	62.0	155,000	7.7	85,000	4.1	193,000	9.2	2,200	7.3
March	334,000	14.9	66.3	67.3	147,000	6.8	93,000	4.2	206,000	9.2	2,600	7.9
April	314,000	14.5	64.3	65.9	172,000	8.2	95,000	4.4	192,000	8.8	2,300	7.5
May	332,000	14.8	65.7	66.2	241,000	10.7	103,000	4.6	198,000	8.8	2,400	7.3
June	304,000	14.0	62.2	61.0	242,000	11.2	103,000	4.8	179,000	8.2	2,300	7.6
July	343,000	15.3	67.9	65.2	235,000	10.5	96,000	4.3	187,000	8.3	2,300	6.8
August	360,000	16.0	71.3	67.3	239,000	10.7	101,000	4.5	176,000	7.8	2,200	6.7
September	345,000	15.8	70.6	66.5	225,000	10.3	92,000	4.2	182,000	8.3	2,400	7.1
October	348,000	15.5	68.9	69.2	231,000	10.3	99,000	4.4	188,000	8.3	2,500	7.2
November	313,000	14.3	63.9	66.0	171,000	7.9	94,000	4.3	191,000	8.8	2,300	7.2
December	302,000	13.4	59.8	62.1	184,000	8.1	94,000	4.2	200,000	8.9	2,300	7.2
1997:												
January	301,000	13.3	59.5	62.4	106,000	4.9	92,000	4.1	217,000	9.6	2,100	6.8

¹The method of seasonal adjustment, developed by the U.S. Bureau of the Census, is described in *The X-11 Variant of the Census Method II Seasonal Adjustment Program*, Technical Paper No. 15 (1967 revision).

NOTE: Figures include all revisions received from the States and, therefore, may differ from those previously published.

Table 2. Provisional number of live births and deaths: Each division and State, January 1995–97

[Data are estimates by State of residence; see [Technical notes](#)]

Area	Live births			Deaths		
	January			January		
	1997	1996	1995	1997	1996	1995
New England	18,746	12,096	16,236	10,386	10,835	10,459
Maine	1,120	906	863	915	1,031	863
New Hampshire	1,400	1,064	923	1,043	712	830
Vermont	529	475	535	531	405	491
Massachusetts	12,073	5,912	9,057	4,440	5,404	4,893
Rhode Island	834	801	679	988	830	861
Connecticut	2,790	2,938	4,179	2,469	2,453	2,521
Middle Atlantic	36,865	46,369	44,219	36,852	37,300	37,766
New York	18,697	28,476	21,767	18,562	17,573	18,394
New Jersey	6,378	4,159	8,491	5,708	6,851	6,846
Pennsylvania	11,790	13,734	13,961	12,582	12,876	12,526
East North Central	44,766	49,097	50,004	37,714	37,464	35,155
Ohio	10,156	11,990	13,037	10,673	10,038	9,512
Indiana	4,288	6,205	5,856	3,881	4,621	3,946
Illinois	13,115	15,173	15,004	9,526	9,898	9,887
Michigan	11,392	10,699	10,720	8,767	8,280	7,666
Wisconsin	5,815	5,030	5,387	4,867	4,627	4,144
West North Central	21,586	21,119	24,078	17,866	15,134	16,995
Minnesota	5,344	5,110	5,020	3,981	3,762	3,606
Iowa	3,215	1,599	2,699	2,640	1,790	2,884
Missouri	6,906	7,207	7,693	5,244	4,846	5,820
North Dakota	680	647	826	711	493	622
South Dakota	875	526	766	850	336	582
Nebraska	1,627	1,836	1,821	1,545	1,339	1,337
Kansas	2,939	4,194	5,253	2,895	2,568	2,144
South Atlantic	53,535	52,301	59,156	43,689	44,824	41,801
Delaware	811	895	877	600	650	558
Maryland	3,061	5,936	6,692	2,668	4,132	3,460
District of Columbia	681	700	779	583	602	623
Virginia	5,234	5,011	9,227	4,891	4,814	5,271
West Virginia	1,283	1,864	2,046	2,016	1,921	1,601
North Carolina	9,668	8,132	7,817	6,976	5,673	6,144
South Carolina	4,987	4,260	4,477	2,670	4,028	2,799
Georgia	11,164	10,387	11,126	6,143	6,478	5,965
Florida	16,646	15,116	16,115	17,142	16,526	15,380
East South Central	18,149	17,853	20,906	16,173	14,592	15,255
Kentucky	4,643	4,695	4,638	4,324	4,038	3,623
Tennessee	5,818	4,439	6,613	5,103	3,373	4,826
Alabama	5,324	5,779	5,506	4,272	4,465	4,269
Mississippi	2,364	2,940	4,149	2,474	2,716	2,537
West South Central	28,086	32,862	45,118	15,031	21,100	24,254
Arkansas	2,703	2,885	2,883	2,291	2,313	1,940
Louisiana	5,917	6,868	7,428	3,425	4,240	4,048
Oklahoma	2,907	4,693	3,635	3,498	3,323	3,164
Texas ¹	16,559	18,416	31,172	5,817	11,224	15,102
Mountain	18,902	22,519	20,828	10,989	10,933	9,253
Montana	648	849	879	686	724	735
Idaho	1,535	1,692	1,431	983	843	781
Wyoming	394	507	571	330	306	348
Colorado	3,525	4,239	4,420	2,411	2,636	2,295
New Mexico	1,853	2,329	2,564	1,697	1,207	1,013
Arizona	4,916	8,532	6,018	2,461	3,050	2,079
Utah	3,580	2,593	3,017	1,188	956	947
Nevada	2,451	1,778	1,928	1,233	1,211	1,055
Pacific	56,153	59,325	64,077	28,675	27,877	28,414
Washington	6,543	6,314	6,166	4,274	4,181	3,161
Oregon	4,799	4,713	3,633	3,468	3,016	3,074
California ¹	42,868	45,962	51,889	20,078	19,812	21,339
Alaska	685	751	939	158	157	174
Hawaii	1,258	1,585	1,450	697	711	666
Puerto Rico ²	7,580	5,658	4,986	2,096	2,310	2,438

¹Figures include adjustments for varying lengths of reporting periods; see [Technical notes](#).

²Data for Puerto Rico are not included in U.S. total figures.

NOTES: Figures include all revisions received from the States. Cumulative figures for the current year reflect revisions received for previous months, and figures for earlier years may differ from those previously published.

Table 3. Provisional number of marriages and divorces: Each division and State, January, 1995–97

[By State of occurrence. Number of events reported; see [Technical notes](#). Divorces include reported annulments]

Area	Marriages			Divorces		
	January			January		
	1997	1996	1995	1997	1996	1995
New England	4,145	3,890	4,670	3,940	3,872	2,641
Maine	308	594	298	261	150	493
New Hampshire	725	538	389	558	420	340
Vermont	406	223	332	458	302	315
Massachusetts	1,834	1,828	2,805	1,500	1,828	620
Rhode Island	265	222	203	275	260	254
Connecticut	607	485	643	888	912	619
Middle Atlantic	20,273	9,740	12,103	12,592	13,595	10,241
New York ¹	17,011	5,901	6,765	7,275	8,942	4,808
New Jersey	1,812	1,382	1,804	2,321	1,995	2,049
Pennsylvania	1,450	2,457	3,534	2,996	2,658	3,384
East North Central	13,804	10,886	14,586	² 10,267	² 9,040	² 12,077
Ohio	3,603	2,086	5,358	3,333	2,085	4,353
Indiana	2,042	1,734	2,145	---	---	---
Illinois	4,635	3,538	3,674	3,038	2,636	3,112
Michigan	1,759	1,708	1,764	2,500	2,920	3,038
Wisconsin	1,765	1,820	1,645	1,396	1,399	1,574
West North Central	7,542	7,694	8,988	5,612	6,492	6,225
Minnesota	1,204	1,321	1,316	1,026	1,175	1,151
Iowa	1,308	494	1,332	893	660	1,134
Missouri	2,657	4,031	3,667	1,774	2,174	2,702
North Dakota	322	254	210	154	193	165
South Dakota	314	224	400	239	224	270
Nebraska	575	511	670	580	545	504
Kansas	1,162	859	1,393	946	1,521	299
South Atlantic	27,506	28,050	26,990	16,488	14,109	18,008
Delaware	218	208	198	173	252	422
Maryland	1,573	2,228	1,883	768	894	1,214
District of Columbia	111	98	34	112	77	74
Virginia	3,091	2,229	4,279	1,942	1,629	2,371
West Virginia	574	645	565	542	371	775
North Carolina	3,035	4,456	3,292	2,746	2,270	2,685
South Carolina	1,934	2,506	2,476	1,118	1,195	1,070
Georgia	3,950	5,265	4,453	3,084	2,415	2,756
Florida	13,020	10,415	9,810	6,003	5,006	6,641
East South Central	² 8,993	13,069	14,895	7,251	8,856	7,715
Kentucky	3,474	2,530	4,339	2,155	1,868	2,188
Tennessee	---	5,800	6,811	1,676	3,259	2,670
Alabama	3,405	3,282	2,980	1,622	2,142	2,259
Mississippi	2,114	1,457	765	1,798	1,587	598
West South Central	² 7,831	15,037	24,767	² 1,641	² 11,721	² 11,996
Arkansas	500	1,583	1,005	300	697	518
Louisiana	---	3,470	2,891	---	---	---
Oklahoma	1,541	1,484	1,448	1,341	1,613	1,800
Texas ³	5,790	8,500	19,423	---	9,411	9,678
Mountain	² 8,597	20,628	17,099	² 4,846	² 5,921	² 5,551
Montana	231	386	231	255	335	251
Idaho	1,231	1,102	1,327	632	658	616
Wyoming	209	139	142	204	203	273
Colorado	1,632	1,729	1,711	---	---	---
New Mexico ^{4,5}	1,010	1,022	749	779	1,051	766
Arizona ¹	2,988	3,318	2,443	2,165	2,021	2,026
Utah	1,296	1,375	1,865	811	536	700
Nevada	---	11,557	8,631	---	1,117	919
Pacific	15,532	19,261	18,058	² 4,293	² 4,305	² 4,749
Washington	2,844	2,318	2,668	2,320	2,725	2,685
Oregon	1,993	1,336	1,886	1,531	1,089	1,296
California	9,197	14,030	11,852	---	---	---
Alaska	282	354	361	221	194	247
Hawaii	1,216	1,223	1,291	221	297	521
Puerto Rico ⁶	2,080	2,331	2,285	---	---	---

--- Data not available.

¹Figures for marriages are marriage licenses issued for some counties.

²Excludes figures for State(s) shown below as not available.

³Figures include adjustments for varying lengths of reporting periods; see [Technical notes](#).

⁴Figures for marriages are marriage licenses issued.

⁵Figures for divorces include estimates for some counties.

⁶Data for Puerto Rico are not included in U.S. total figures.

NOTES: Figures include all revisions received from the States. Cumulative figures for the current year reflect revisions received for previous months, and figures for earlier years may differ from those previously published.

Table 4. Provisional number of deaths under 1 year and infant mortality rates: Each division and State, 12 months ending with January 1996 and 1997

[Data are estimates by State of residence. Figures should be interpreted with caution because of conversion of place of occurrence to place of residence; see [Technical notes](#). Infant mortality rates are deaths under 1 year per 1,000 live births in specified area]

Area	12 months ending with January			
	1997		1996	
	Number	Rate	Number	Rate
New England	883	5.0	962	5.5
Maine	48	3.4	88	6.2
New Hampshire	74	5.1	65	4.3
Vermont	57	8.4	37	5.5
Massachusetts	370	4.3	407	5.0
Rhode Island	67	5.2	96	7.4
Connecticut	267	6.1	269	6.1
Middle Atlantic	3,787	7.2	3,946	7.4
New York	1,871	7.1	2,007	7.4
New Jersey	834	7.2	814	7.3
Pennsylvania	1,082	7.3	1,125	7.4
East North Central	4,751	7.7	5,318	8.5
Ohio	1,167	7.8	1,287	8.3
Indiana	603	7.4	769	9.1
Illinois	1,449	7.9	1,643	8.8
Michigan	1,037	7.5	1,121	8.4
Wisconsin	495	7.3	498	7.5
West North Central	1,858	7.3	1,830	7.3
Minnesota	419	6.6	390	6.2
Iowa	212	5.8	236	6.7
Missouri	606	8.3	580	7.8
North Dakota	40	4.7	47	5.5
South Dakota	56	5.3	105	10.1
Nebraska	190	8.2	184	7.9
Kansas	335	8.6	288	8.0
South Atlantic	5,406	8.2	5,596	8.6
Delaware	74	7.4	72	7.2
Maryland	596	8.7	602	8.4
District of Columbia	127	15.5	163	18.6
Virginia	644	7.2	669	7.8
West Virginia	157	8.1	157	7.5
North Carolina	1,009	9.4	926	9.0
South Carolina	395	7.7	462	9.3
Georgia	1,019	8.9	1,103	9.8
Florida	1,385	7.2	1,442	7.7
East South Central	2,052	8.9	2,108	9.6
Kentucky	414	8.0	398	7.8
Tennessee	651	8.6	688	9.6
Alabama	597	9.7	628	10.2
Mississippi	390	9.6	394	10.9
West South Central	3,424	7.4	3,306	7.0
Arkansas	315	8.9	278	8.1
Louisiana	655	10.0	617	9.2
Oklahoma	439	10.1	407	8.7
Texas ¹	2,015	6.3	2,004	6.2
Mountain	1,763	7.0	1,625	6.7
Montana	73	6.9	87	7.8
Idaho	135	7.3	100	5.6
Wyoming	41	6.7	52	8.3
Colorado	369	7.9	350	7.0
New Mexico	168	6.3	180	6.7
Arizona	577	7.6	524	7.4
Utah	249	5.9	201	5.2
Nevada	151	6.3	131	6.2
Pacific	4,126	6.0	4,347	6.1
Washington	422	5.3	349	4.5
Oregon	240	5.5	263	6.0
California ¹	3,293	6.1	3,554	6.4
Alaska	75	7.4	70	7.1
Hawaii	96	5.3	111	6.0
Puerto Rico ²	546	8.6	673	10.9

¹Figures include adjustments for varying lengths of reporting periods; see [Technical notes](#).

²Data for Puerto Rico are not included in U.S. total figures.

NOTES: Figures include all revisions received from the States. Figures for the current year reflect revisions received for previous months, and figures for earlier years may differ from those previously published.

Table 5. Provisional number of deaths and death rates, by age, race, and sex, and age-adjusted death rates by race and sex: United States, December 1995 and 1996, and cumulative figures 1995 and 1996

[Data are provisional, estimated from a 10-percent sample of deaths. Age-specific rates on an annual basis per 100,000 population in specified group; age-adjusted rates per 100,000 U.S. standard population; see [Technical notes](#). Because of rounding of estimates, figures may not add to totals. For method of computation and information on standard errors of the estimates, see [Technical notes](#)]

Age, race, and sex	December				January–December			
	1996		1995		1996		1995	
	Number	Rate	Number	Rate	Number	Rate	Number	Rate
All races, both sexes¹								
All ages	200,000	886.7	197,000	878.3	2,311,000	871.5	2,309,000	878.6
Under 1 year	} 3,370	68.9	3,710	75.6	28,100	² 729.5	29,300	² 760.4
1–4 years					5,850	37.6	6,740	42.8
5–14 years					8,790	22.7	8,230	21.6
15–24 years					2,560	83.2	2,660	87.1
25–34 years	4,030	118.7	4,470	129.6	52,230	129.3	58,270	142.6
35–44 years	7,900	213.4	8,730	239.9	96,420	222.9	102,640	241.5
45–54 years	11,910	426.8	11,610	431.1	142,810	441.8	143,160	460.5
55–64 years	20,200	1,108.8	19,580	1,086.9	234,430	1,098.3	234,440	1,109.3
65–74 years	39,910	2,533.6	39,980	2,510.0	477,120	2,553.5	478,950	2,553.6
75–84 years	57,050	5,823.6	55,200	5,767.5	658,740	5,763.8	651,570	5,844.7
85 years and over	53,010	16,413.8	49,720	15,907.9	572,090	15,317.0	558,260	15,379.1
Not stated	70	...	70	...	950	...	1,020	...
Age-adjusted rate ³	488.9	...	491.6	...	492.5	...	503.0
All races, male¹								
All ages	98,820	895.1	98,370	898.8	1,165,180	899.5	1,171,770	913.3
Under 1 year	} 1,880	75.0	2,280	90.7	15,490	² 786.3	16,320	² 828.0
1–4 years					3,240	40.7	3,850	47.8
5–14 years					5,150	26.0	5,020	25.7
15–24 years					1,860	117.6	2,000	128.3
25–34 years	2,850	167.8	3,260	189.1	37,030	183.5	42,380	207.6
35–44 years	5,250	285.2	5,900	326.8	65,320	304.3	70,900	336.3
45–54 years	7,390	541.2	7,690	584.4	90,290	571.8	90,800	597.9
55–64 years	12,170	1,403.3	11,600	1,353.9	141,270	1,390.9	140,470	1,398.5
65–74 years	22,120	3,145.7	22,810	3,217.2	268,800	3,227.8	273,990	3,286.8
75–84 years	27,940	7,240.4	26,720	7,155.0	323,320	7,212.1	319,140	7,377.3
85 years and over	17,330	18,771.2	16,080	18,310.3	189,310	17,961.1	181,800	17,911.3
Not stated	30	...	30	...	630	...	650	...
Age-adjusted rate ³	612.4	...	628.9	...	626.2	...	646.0
All races, female¹								
All ages	101,190	878.7	97,350	849.2	1,145,980	844.8	1,135,310	844.3
Under 1 year	} 1,490	62.4	1,430	59.7	12,590	² 670.0	12,930	² 687.4
1–4 years					2,610	34.3	2,890	37.6
5–14 years					3,650	19.4	3,200	17.2
15–24 years					700	46.8	650	43.5
25–34 years	1,180	69.5	1,210	70.1	15,200	75.2	15,890	77.8
35–44 years	2,650	142.4	2,830	154.3	31,100	142.7	31,750	148.2
45–54 years	4,520	317.2	3,920	284.6	52,520	317.6	52,350	329.2
55–64 years	8,040	842.4	7,980	844.8	93,160	832.7	93,970	847.3
65–74 years	17,790	2,040.0	17,170	1,942.9	208,320	2,011.4	204,970	1,966.9
75–84 years	29,100	4,901.1	28,480	4,880.3	335,420	4,829.0	332,430	4,872.2
85 years and over	35,680	15,475.9	33,630	14,964.7	382,780	14,277.5	376,450	14,390.3
Not stated	40	...	40	...	320	...	370	...
Age-adjusted rate ³	386.1	...	376.4	...	381.2	...	383.7
White								
All ages	172,440	923.6	169,150	910.3	1,987,440	904.8	1,982,050	908.9
Under 1 year	} 2,070	53.4	2,650	68.2	18,100	² 603.3	19,430	² 644.4
1–4 years					3,940	32.1	4,640	37.3
5–14 years					6,330	20.7	6,090	20.1
15–24 years					1,770	72.3	1,900	78.1
25–34 years	2,600	94.4	3,190	113.4	36,580	111.3	40,830	122.3
35–44 years	5,910	192.2	6,370	210.2	69,820	194.0	72,970	206.1
45–54 years	8,960	377.0	9,080	394.5	108,680	394.1	109,970	413.6
55–64 years	16,470	1,049.2	15,910	1,022.7	190,360	1,033.7	190,140	1,041.1
65–74 years	34,640	2,489.5	34,650	2,454.4	413,160	2,499.0	413,450	2,485.0
75–84 years	51,000	5,752.1	49,480	5,701.0	590,810	5,701.1	585,680	5,794.2
85 years and over	48,970	16,748.6	45,870	16,126.7	525,320	15,459.7	513,520	15,542.4
Not stated	50	...	50	...	690	...	800	...
Age-adjusted rate ³	463.2	...	468.9	...	466.8	...	475.8

See footnotes at end of table.

Table 5. Provisional number of deaths and death rates, by age, race, and sex, and age-adjusted death rates by race and sex: United States, December 1995 and 1996, and cumulative figures 1995 and 1996—Con.

[Data are provisional, estimated from a 10-percent sample of deaths. Age-specific rates on an annual basis per 100,000 population in specified group; age-adjusted rates per 100,000 U.S. standard population; see [Technical notes](#). Because of rounding of estimates, figures may not add to totals. For method of computation and information on standard errors of the estimates, see [Technical notes](#)]

Age, race, and sex	December				January–December			
	1996		1995		1996		1995	
	Number	Rate	Number	Rate	Number	Rate	Number	Rate
White male								
All ages.	84,430	919.4	84,480	926.4	991,940	920.1	996,060	931.2
Under 1 year.	} 1,080	54.3	1,630	81.8	10,010	² 650.0	11,000	² 711.5
1–4 years					2,290	36.4	2,810	44.1
5–14 years					3,690	23.5	3,700	23.8
15–24 years					1,270	100.3	1,410	112.9
25–34 years	1,910	137.2	2,380	167.6	26,410	159.2	30,300	179.8
35–44 years	4,050	262.1	4,470	294.1	47,910	265.4	51,180	288.4
45–54 years	5,560	472.8	6,130	539.3	69,270	508.6	70,380	536.1
55–64 years	9,900	1,309.6	9,560	1,277.9	115,350	1,301.6	115,500	1,315.8
65–74 years	19,330	3,087.8	19,950	3,151.3	234,280	3,155.3	238,160	3,197.2
75–84 years	25,200	7,188.3	24,160	7,108.1	291,660	7,146.8	288,570	7,333.4
85 years and over.	16,120	19,460.1	14,760	18,606.7	173,110	18,164.7	165,420	18,059.0
Not stated	20	...	20	...	470	...	540	...
Age-adjusted rate ³	578.8	...	601.6	...	591.9	...	610.5
White female								
All ages.	88,000	927.6	84,680	894.8	995,500	890.1	985,990	887.5
Under 1 year.	} 990	52.5	1,010	53.4	8,090	² 554.1	8,430	² 573.9
1–4 years					1,650	27.6	1,830	30.2
5–14 years					2,640	17.7	2,390	16.2
15–24 years					500	42.3	500	42.2
25–34 years	690	50.6	810	58.1	10,170	62.5	10,530	63.7
35–44 years	1,860	121.6	1,900	125.7	21,790	122.1	21,790	123.5
45–54 years	3,400	283.1	2,940	252.4	39,420	282.4	39,590	294.1
55–64 years	6,570	807.3	6,350	786.3	75,000	785.0	74,640	786.8
65–74 years	15,310	2,000.2	14,710	1,889.2	178,880	1,964.0	175,290	1,907.6
75–84 years	25,800	4,812.9	25,320	4,795.3	299,150	4,762.0	297,110	4,813.1
85 years and over.	32,850	15,676.7	31,110	15,167.5	352,200	14,404.9	348,100	14,577.1
Not stated	30	...	30	...	220	...	260	...
Age-adjusted rate ³	367.4	...	356.8	...	362.2	...	362.7
Black								
All ages.	24,200	847.8	23,510	830.0	284,250	845.5	287,040	865.9
Under 1 year.	} 1,160	152.8	970	126.5	9,000	² 1,428.6	8,940	² 1,428.1
1–4 years					1,630	66.2	1,850	74.4
5–14 years					1,970	32.8	1,770	30.0
15–24 years					640	137.0	640	137.7
25–34 years	1,270	277.5	1,180	256.9	13,930	257.4	15,850	292.4
35–44 years	1,790	393.1	2,140	480.8	24,120	454.8	27,130	523.3
45–54 years	2,550	863.6	2,320	822.5	30,010	880.6	29,540	912.3
55–64 years	3,320	1,804.7	3,200	1,759.8	39,120	1,814.5	38,970	1,831.3
65–74 years	4,650	3,349.6	4,650	3,369.2	56,070	3,433.6	57,670	3,570.9
75–84 years	5,360	7,401.5	5,040	7,098.3	58,940	6,991.7	57,430	6,936.0
85 years and over.	3,430	13,964.2	3,350	14,137.5	40,570	14,335.7	39,080	14,262.8
Not stated	20	...	20	...	260	...	200	...
Age-adjusted rate ³	738.1	...	725.8	...	741.8	...	767.7
Black male								
All ages.	12,460	919.4	12,240	910.8	151,280	948.3	154,160	980.5
Under 1 year.	} 710	184.3	580	149.2	4,890	² 1,532.9	4,760	² 1,496.9
1–4 years					830	66.5	930	73.8
5–14 years					1,160	38.0	1,140	38.1
15–24 years					460	196.2	510	219.2
25–34 years	810	373.4	830	381.7	9,480	370.0	11,020	430.0
35–44 years	1,100	516.4	1,320	635.4	15,740	635.4	18,030	745.7
45–54 years	1,590	1,188.1	1,450	1,134.4	18,810	1,218.3	18,360	1,250.7
55–64 years	2,060	2,581.9	1,730	2,187.9	22,950	2,449.3	22,010	2,382.0
65–74 years	2,460	4,240.0	2,480	4,306.8	30,140	4,412.9	31,150	4,635.4
75–84 years	2,320	8,695.5	2,260	8,696.0	26,990	8,734.6	26,330	8,747.5
85 years and over.	930	12,917.6	1,080	15,698.9	13,260	16,370.4	13,500	17,088.6
Not stated	10	...	10	...	160	...	100	...
Age-adjusted rate ³	953.0	...	936.0	...	978.7	...	1,015.2

See footnotes at end of table.

Table 5. Provisional number of deaths and death rates, by age, race, and sex, and age-adjusted death rates by race and sex: United States, December 1995 and 1996, and cumulative figures 1995 and 1996—Con.

[Data are provisional, estimated from a 10-percent sample of deaths. Age-specific rates on an annual basis per 100,000 population in specified group; age-adjusted rates per 100,000 U.S. standard population; see [Technical notes](#). Because of rounding of estimates, figures may not add to totals. For method of computation and information on standard errors of the estimates, see [Technical notes](#)]

Age, race, and sex	December				January–December			
	1996		1995		1996		1995	
	Number	Rate	Number	Rate	Number	Rate	Number	Rate
Black female								
All ages	11,740	783.0	11,260	756.4	132,980	752.7	132,880	762.5
Under 1 year	} 450	120.3	380	100.6	4,120	² 1,324.8	4,180	² 1,357.1
1–4 years					800	65.8	530	76.0
5–14 years					810	27.4	630	21.7
15–24 years					170	77.3	140	60.3
25–34 years	460	191.0	350	144.7	4,450	156.2	4,840	169.4
35–44 years	690	284.7	820	345.4	8,390	296.8	9,110	329.4
45–54 years	950	588.5	870	564.1	11,200	600.9	11,180	631.6
55–64 years	1,270	1,219.0	1,470	1,430.4	16,170	1,326.5	16,970	1,409.5
65–74 years	2,190	2,710.3	2,170	2,698.0	25,930	2,729.5	26,520	2,812.3
75–84 years	3,040	6,646.6	2,780	6,175.9	31,950	5,983.1	31,100	5,901.3
85 years and over	2,500	14,398.1	2,270	13,498.7	27,310	13,519.8	25,580	13,117.9
Not stated	10	...	10	...	100	...	100	...
Age-adjusted rate ³	567.6	...	561.7	...	558.0	...	576.7

... Category not applicable.

¹ Includes races other than white and black.

²Death rates for "Under 1 year" (based on population estimates) differ from infant mortality rates (based on live births); see [table 9](#) for infant mortality rates.

³For method of computation, see [Technical notes](#).

NOTES: Figures include all revisions received from the States. Cumulative figures for the current year reflect revisions received for previous months, and figures for earlier years may differ from those previously published.

Table 6. Provisional number of deaths and death rates for 72 selected causes, Human immunodeficiency virus infection, and Alzheimer's disease: United States, December 1995 and 1996, and cumulative figures 1995 and 1996—Con.

[Data are provisional, estimated from a 10-percent sample of deaths. Rates on an annual basis per 100,000 estimated population. Because of rounding of estimates, figures may not add to totals. For method of computation and information on standard errors of the estimates, see [Technical notes](#). For explanation of asterisks preceding cause-of-death categories, see [Technical notes](#)]

Cause of death (Based on the <i>Ninth Revision, International Classification of Diseases, 1975</i>)	December				January–December			
	1996		1995		1996		1995	
	Number	Rate	Number	Rate	Number	Rate	Number	Rate
All causes	200,000	886.7	197,000	878.3	2,311,000	871.5	2,309,000	878.6
Shigellosis and amebiasis	—	*	—	*	—	*	—	*
Certain other intestinal infections.	90	*	50	*	820	0.3	640	0.2
Tuberculosis	90	*	150	0.7	1,010	0.4	1,370	0.5
Tuberculosis of respiratory system	70	*	120	0.5	800	0.3	1,070	0.4
Other tuberculosis	20	*	30	*	210	0.1	300	0.1
Whooping cough.	—	*	—	*	10	*	10	*
Streptococcal sore throat, scarlatina, and erysipelas.	—	*	—	*	—	*	10	*
Meningococcal infection	20	*	—	*	270	0.1	300	0.1
Septicemia	2,000	8.9	1,680	7.5	21,670	8.2	21,200	8.1
Acute poliomyelitis.	—	*	—	*	—	*	—	*
Measles	—	*	—	*	—	*	—	*
Viral hepatitis.	310	1.4	300	1.3	3,820	1.4	3,520	1.3
Syphilis	—	*	—	*	30	*	130	0.0
All other infectious and parasitic diseases ¹	2,660	11.8	3,650	16.3	37,940	14.3	49,010	18.7
Malignant neoplasms, including neoplasms of lymphatic and hematopoietic tissues	45,220	200.5	44,240	197.4	542,330	204.5	536,440	204.1
Malignant neoplasms of lip, oral cavity, and pharynx	700	3.1	620	2.8	7,850	3.0	7,980	3.0
Malignant neoplasms of digestive organs and peritoneum	10,510	46.6	10,330	46.1	126,840	47.8	125,250	47.7
Malignant neoplasms of respiratory and intrathoracic organs	13,750	61.0	12,930	57.7	159,060	60.0	154,940	59.0
Malignant neoplasm of breast	3,350	14.8	3,650	16.3	43,530	16.4	44,010	16.7
Malignant neoplasms of genital organs	4,940	21.9	4,960	22.1	60,230	22.7	60,800	23.1
Malignant neoplasms of urinary organs	1,860	8.2	1,830	8.2	23,030	8.7	23,090	8.8
Malignant neoplasms of all other and unspecified sites.	5,590	24.8	5,330	23.8	66,250	25.0	65,590	25.0
Leukemia.	1,560	6.9	1,640	7.3	20,330	7.7	19,620	7.5
Other malignant neoplasms of lymphatic and hematopoietic tissues.	2,960	13.1	2,950	13.2	35,200	13.3	35,160	13.4
Benign neoplasms, carcinoma in situ, and neoplasms of uncertain behavior and of unspecified nature	690	3.1	710	3.2	7,650	2.9	8,390	3.2
Diabetes mellitus	5,440	24.1	4,730	21.1	61,470	23.2	58,330	22.2
Nutritional deficiencies	300	1.3	410	1.8	3,800	1.4	3,830	1.5
Anemias.	310	1.4	440	2.0	3,970	1.5	4,290	1.6
Meningitis.	50	*	50	*	590	0.2	780	0.3
Major cardiovascular diseases	81,950	363.3	81,750	364.8	941,640	355.1	942,510	358.7
Diseases of heart	63,600	281.9	63,030	281.3	729,140	275.0	730,870	278.1
Rheumatic fever and rheumatic heart disease.	310	1.4	400	1.8	4,860	1.8	5,030	1.9
Hypertensive heart disease	2,150	9.5	2,070	9.2	26,020	9.8	24,490	9.3
Hypertensive heart and renal disease	210	0.9	220	1.0	2,210	0.8	2,340	0.9
Ischemic heart disease	41,690	184.8	40,880	182.4	473,010	178.4	477,410	181.7
Acute myocardial infarction	18,560	82.3	18,140	80.9	213,880	80.7	217,190	82.7
Other acute and subacute forms of ischemic heart disease	360	1.6	270	1.2	2,690	1.0	2,590	1.0
Angina pectoris	40	*	50	*	680	0.3	730	0.3
Old myocardial infarction and other forms of chronic ischemic heart disease	22,730	100.8	22,410	100.0	255,750	96.4	256,890	97.8
Other diseases of endocardium.	1,430	6.3	1,530	6.8	16,480	6.2	15,530	5.9
All other forms of heart disease.	17,800	78.9	17,950	80.1	206,570	77.9	206,070	78.4
Hypertension with or without renal disease	940	4.2	1,080	4.8	12,190	4.6	12,480	4.7
Cerebrovascular diseases	13,920	61.7	13,710	61.2	158,550	59.8	156,760	59.7
Intracerebral and other intracranial hemorrhage.	2,160	9.6	1,980	8.8	23,510	8.9	21,700	8.3
Cerebral thrombosis and unspecified occlusion of cerebral arteries.	1,040	4.6	1,160	5.2	12,450	4.7	13,400	5.1
Cerebral embolism	100	*	60	*	810	0.3	640	0.2
All other and late effects of cerebrovascular diseases	10,610	47.0	10,510	46.9	121,790	45.9	121,010	46.1

See footnotes at end of table.

Table 6. Provisional number of deaths and death rates for 72 selected causes, Human immunodeficiency virus infection, and Alzheimer's disease: United States, December 1995 and 1996, and cumulative figures 1995 and 1996—Con.

[Data are provisional, estimated from a 10-percent sample of deaths. Rates on an annual basis per 100,000 estimated population. Because of rounding of estimates, figures may not add to totals. For method of computation and information on standard errors of the estimates, see [Technical notes](#). For explanation of asterisks preceding cause-of-death categories, see [Technical notes](#)]

Cause of death (Based on the <i>Ninth Revision, International Classification of Diseases, 1975</i>)	December				January–December				
	1996		1995		1996		1995		
	Number	Rate	Number	Rate	Number	Rate	Number	Rate	
Cerebrovascular diseases—Con.									
Atherosclerosis	440	1,290	5.7	1,610	7.2	15,580	5.9	16,400	6.2
Other diseases of arteries, arterioles, and capillaries441–448	2,200	9.8	2,320	10.3	26,180	9.9	26,010	9.9
Acute bronchitis and bronchiolitis466	70	*	20	*	410	0.2	540	0.2
Pneumonia and influenza480–487	8,240	36.5	7,200	32.1	81,550	30.8	80,170	30.5
Pneumonia480–486	8,090	35.9	7,170	32.0	80,890	30.5	79,690	30.3
Influenza487	160	0.7	30	*	660	0.2	480	0.2
Chronic obstructive pulmonary diseases and allied conditions490–496	9,380	41.6	8,470	37.8	105,470	39.8	103,550	39.4
Bronchitis, chronic and unspecified490–491	220	1.0	250	1.1	2,950	1.1	2,970	1.1
Emphysema492	1,680	7.4	1,250	5.6	16,800	6.3	17,420	6.6
Asthma493	470	2.1	470	2.1	5,150	1.9	5,510	2.1
Other chronic obstructive pulmonary diseases and allied conditions494–496	7,010	31.1	6,510	29.0	80,570	30.4	77,640	29.5
Ulcer of stomach and duodenum531–533	380	1.7	440	2.0	4,780	1.8	5,890	2.2
Appendicitis540–543	40	*	10	*	470	0.2	400	0.2
Hernia of abdominal cavity and intestinal obstruction without mention of hernia550–553,560	560	2.5	440	2.0	6,450	2.4	5,960	2.3
Chronic liver disease and cirrhosis571	2,120	9.4	1,910	8.5	24,460	9.2	25,090	9.5
Cholelithiasis and other disorders of gallbladder574–575	260	1.1	260	1.2	2,680	1.0	2,690	1.0
Nephritis and nephrotic syndrome, and nephrosis580–589	2,560	11.3	2,370	10.6	26,980	10.2	25,630	9.8
Acute glomerulonephritis and nephrotic syndrome580–581	30	*	20	*	220	0.1	280	0.1
Chronic glomerulonephritis, nephritis and nephropathy, not specified as acute or chronic, and renal sclerosis, unspecified582–583,587	240	1.1	150	0.7	1,800	0.7	1,340	0.5
Renal failure, disorders resulting from impaired renal function, and small kidney of unknown cause584–586,588–589	2,290	10.1	2,200	9.8	24,960	9.4	24,010	9.1
Infections of kidney590	80	*	40	*	900	0.3	730	0.3
Hyperplasia of prostate600	30	*	40	*	410	0.2	430	0.2
Complications of pregnancy, childbirth, and the puerperium630–676	30	*	20	*	280	0.1	320	0.1
Pregnancy with abortive outcome630–638	—	*	—	*	20	*	20	*
Other complications of pregnancy, childbirth, and the puerperium640–676	30	*	20	*	260	0.1	300	0.1
Congenital anomalies740–759	860	3.8	1,010	4.5	11,470	4.3	11,550	4.4
Certain conditions originating in the perinatal period760–779	1,000	4.4	1,030	4.6	12,900	4.9	13,410	5.1
Birth trauma, intrauterine hypoxia, birth asphyxia, and respiratory distress syndrome767–769	230	1.0	150	0.7	2,150	0.8	1,980	0.8
Other conditions originating in the perinatal period760–766,770–779	780	3.4	890	4.0	10,750	4.1	11,420	4.3
Symptoms, signs, and ill-defined conditions780–799	3,880	17.2	3,800	17.0	41,770	15.8	42,220	16.1
All other diseasesResidual	19,710	87.4	19,160	85.5	219,040	82.6	213,450	81.2
Accidents and adverse effectsE800–E949	7,640	33.9	7,270	32.4	90,760	34.2	89,800	34.2
Motor vehicle accidentsE810–E825	3,740	16.6	3,460	15.4	43,690	16.5	43,780	16.7
All other accidents and adverse effectsE800–E807,E826–E949	3,910	17.3	3,810	17.0	47,070	17.7	46,020	17.5
SuicideE950–E959	2,360	10.5	2,090	9.3	30,170	11.4	29,830	11.4
Homicide and legal interventionE960–E978	1,520	6.7	1,810	8.1	20,890	7.9	22,380	8.5
All other external causesE980–E999	140	0.6	190	0.8	2,320	0.9	2,280	0.9
Human immunodeficiency virus infection ²	*042–*044	1,970	8.7	3,110	13.9	31,240	11.8	42,370	16.1
Alzheimer's disease331.0	2,110	9.4	2,060	9.2	21,930	8.3	20,470	7.8

— Quantity zero. * Figure does not meet standards of reliability or precision; see [Technical notes](#). 0.0 Quantity more than zero but less than 0.05.

¹Includes data for deaths due to Human immunodeficiency virus infection (categories *042–*044) shown separately below; see [Technical notes](#).

²Included in All other infectious and parasitic diseases shown above.

NOTES: Figures include all revisions received from the States. Cumulative figures for the current year reflect revisions received for previous months, and figures for earlier years may differ from those previously published.

Table 7. Provisional number of deaths and death rates for 16 selected subcategories of Malignant neoplasms, including neoplasms of lymphatic and hematopoietic tissues: United States, December 1995 and 1996 and cumulative figures 1995 and 1996

[Data are provisional, estimated from a 10-percent sample of deaths. Rates on an annual basis per 100,000 estimated population. Because of rounding of estimates, figures may not add to totals. For method of computation and information on standard errors of the estimates, see [Technical notes](#)]

Cause of death (Based on the <i>Ninth Revision, International Classification of Diseases, 1975</i>)	December				January–December			
	1996		1995		1996		1995	
	Number	Rate	Number	Rate	Number	Rate	Number	Rate
Malignant neoplasms, including neoplasms of lymphatic and hematopoietic tissues ¹140–208	45,220	200.5	44,240	197.4	542,330	204.5	536,440	204.1
Malignant neoplasm of esophagus150	900	4.0	760	3.4	11,140	4.2	10,360	3.9
Malignant neoplasm of stomach151	990	4.4	1,040	4.6	13,390	5.0	13,810	5.3
Malignant neoplasms of colon, rectum, rectosigmoid junction, and anus153,154	4,730	21.0	4,440	19.8	57,250	21.6	55,830	21.2
Malignant neoplasm of pancreas157	2,460	10.9	2,390	10.7	27,600	10.4	27,380	10.4
Malignant neoplasms of trachea, bronchus, and lung162	13,250	58.7	12,490	55.7	153,750	58.0	149,650	56.9
Malignant melanoma of skin172	570	2.5	470	2.1	7,030	2.7	7,030	2.7
Malignant neoplasm of cervix uteri180	350	1.5	420	1.9	4,480	1.7	4,770	1.8
Malignant neoplasms of body of uterus and of uterus, part unspecified179,182	510	2.3	540	2.4	5,790	2.2	6,110	2.3
Malignant neoplasm of ovary183.0	970	4.3	1,150	5.1	13,500	5.1	13,590	5.2
Malignant neoplasm of prostate185	2,910	12.9	2,660	11.9	34,490	13.0	34,540	13.1
Malignant neoplasm of bladder188	1,080	4.8	880	3.9	11,260	4.2	11,540	4.4
Malignant neoplasms of kidney and other and unspecified urinary organs189	780	3.4	950	4.2	11,770	4.4	11,550	4.4
Malignant neoplasms of brain and other and unspecified parts of nervous system191,192	950	4.2	1,000	4.5	11,590	4.4	11,540	4.4
Hodgkin's disease201	100	*	100	*	1,460	0.6	1,530	0.6
Malignant lymphoma other than Hodgkin's disease200,202	2,020	8.9	1,930	8.6	23,170	8.7	23,260	8.9
Multiple myeloma and other immunoproliferative neoplasms203	850	3.8	920	4.1	10,570	4.0	10,360	3.9

* Figure does not meet standards of reliability or precision; see [Technical notes](#).

¹Includes figures for subcategories not shown below.

NOTES: Figures include all revisions received from the States. Cumulative figures for the current year reflect revisions received for previous months, and figures for earlier years may differ from those previously published.

Table 8. Provisional number of deaths and death rates for firearm mortality: United States, December 1995 and 1996 and cumulative figures 1995 and 1996

[Data are provisional, estimated from a 10-percent sample of deaths. Rates on an annual basis per 100,000 estimated population. Because of rounding of estimates, figures may not add to totals. For method of computation and information on standard errors of the estimates, see [Technical notes](#)]

Cause of death (Based on the <i>Ninth Revision, International Classification of Diseases, 1975</i>)	December				January–December			
	1996		1995		1996		1995	
	Number	Rate	Number	Rate	Number	Rate	Number	Rate
Injury by firearms.E922,E955.0–E955.4,E965.0–965.4,E970,E985.0–E985.4	2,760	12.2	2,930	13.1	34,470	13.0	35,550	13.5
Accident caused by firearm missileE922	160	0.7	200	0.9	1,330	0.5	1,370	0.5
Suicide by firearmsE955.0–E955.4	1,530	6.8	1,310	5.8	18,340	6.9	17,980	6.8
Homicide and legal intervention by firearms.E965.0–E965.4,E970	1,070	4.7	1,410	6.3	14,580	5.5	15,950	6.1
Injury by firearms, undetermined whether accidentally or purposely inflicted.E985.0–E985.4	–	*	20	*	210	0.1	250	0.1

– Quantity zero.

* Figure does not meet standards of reliability or precision; see [Technical notes](#).

NOTES: Figures include all revisions received from the States. Cumulative figures for the current year reflect revisions received for previous months, and figures for earlier years may differ from those previously published.

Table 9. Provisional number of deaths under 1 year and infant mortality rates, by age and for 10 selected causes: United States, December 1995 and 1996 and cumulative figures 1995 and 1996

[Data are provisional, estimated from a 10-percent sample of deaths. Rates on an annual basis per 100,000 live births. Because of rounding of estimates, figures may not add to totals. For method of computation and information on standard errors of the estimates, see [Technical notes](#)]

Age and cause of death (Based on the <i>Ninth Revision, International Classification of Diseases, 1975</i>)	December				January–December			
	1996		1995		1996		1995	
	Number	Rate	Number	Rate	Number	Rate	Number	Rate
Total, under 1 year	2,300	718.3	2,400	772.9	28,100	722.5	29,300	755.6
Under 28 days	1,330	421.2	1,520	483.0	18,470	475.2	18,670	481.4
28 days–11 months	940	297.7	910	289.2	9,610	247.2	10,580	272.8
Certain gastrointestinal diseases.008–009,535,555–558	10	*	10	*	220	5.7	190	4.9
Pneumonia and influenza.480–487	50	*	40	*	330	8.5	360	9.3
Congenital anomalies740–759	530	167.8	440	139.8	6,510	167.5	6,170	159.1
Disorders relating to short gestation and unspecified low birthweight765	220	69.7	230	73.1	3,570	91.9	3,560	91.8
Birth trauma767	10	*	30	*	170	4.4	190	4.9
Intrauterine hypoxia and birth asphyxia768	30	*	10	*	530	13.6	470	12.1
Respiratory distress syndrome.769	160	50.7	100	*	1,400	36.0	1,220	31.5
Other conditions originating in the perinatal period.760–764,766,770–779	560	177.4	660	209.7	7,100	182.7	7,750	199.8
Sudden infant death syndrome798.0	230	72.8	300	95.3	2,610	67.2	2,910	75.0
All other causesResidual	480	152.0	620	197.0	5,660	145.6	6,440	166.0

* Figure does not meet standards of reliability or precision; see [Technical notes](#).

NOTES: Figures include all revisions received from the States. Cumulative figures for the current year reflect revisions received for previous months, and figures for earlier years may differ from those previously published.

Technical notes

Nature and sources of data

Data in this report are provisional unless otherwise specified and include only events occurring within the United States (50 States and the District of Columbia). Mortality data exclude fetal deaths. Data for the Commonwealth of Puerto Rico are not included in the U.S. totals.

Birth, death, and infant death figures in [tables 2](#) and [4](#) for each State are estimates by State of residence. These estimates are derived by applying adjustment ratios to the actual counts of certificates for all events occurring in the State and received in registration offices during a 1-month period regardless of date of the event. The adjustment ratios for each data year represent the observed relationship between final State occurrence figures and final State residence figures for the three most recent years for which final data were available and are expressed as a single ratio for each State. As in previous years, monthly State marriage and divorce figures represent the actual count of all events occurring in the State (State of occurrence) that were received in the registration offices during the 1-month period. Delay in the receipt of certificates in a registration office may result in a low State figure for a given month followed by a high figure for the month(s) in which the delayed records are received. Data for previous months and cumulative data include revised figures received from the States.

Figures for births, deaths, and infant deaths for California in [tables 2](#) and [4](#) contain adjustments for varying lengths of State reporting periods. Figures for Texas for all events shown in [tables 2–4](#) also are adjusted for varying lengths of State reporting periods. The figures for both States are adjusted by the ratio between the number of days in the data month and the number of days in the State reporting period. The adjusted figures are included in the U.S. totals shown elsewhere in this report.

U.S. totals for births, deaths, and infant deaths are based on the State estimates by State of residence and, therefore, in effect, exclude events to nonresidents of the United States. Events to nonresidents of the United States are included in all

marriage and divorce figures. The effect of excluding events to nonresidents from the U.S. totals is small.

Provisional totals for the United States include estimates for State data shown as not available. Provisional totals for births and marriages for the entire United States include adjustments for observed differences between provisional and final monthly figures.

Divorce figures include reported annulments. The monthly national divorce estimate is obtained by multiplying the total for the reporting areas by the ratio observed between the most recent final annual divorce total for the United States and the provisional total for the reporting areas combined.

Random variation—Although the counts in this report are not subject to sampling variability (except the Current Mortality Sample), they may be affected by random variation. When the number of events is small and the probability of such an event is small, considerable caution must be observed in interpreting the data. Such infrequent events may be assumed to follow a Poisson probability distribution. For this distribution a simple approximation may be used to estimate the random variation as follows:

If N is the number of events in the population and R is the corresponding rate, the chances are 19 in 20 that

$$1. N - 2\sqrt{N} \text{ and } N + 2\sqrt{N}$$

covers the “true” number of events.

$$2. R - 2 \frac{R}{\sqrt{N}} \text{ and } R + 2 \frac{R}{\sqrt{N}}$$

covers the “true” rate.

If the rate R_1 corresponding to N_1 events is compared with the rate R_2 corresponding to N_2 events, the difference between the two rates may be regarded as statistically significant at the 0.05 level if it exceeds

$$2 \sqrt{\frac{R_1^2}{N_1} + \frac{R_2^2}{N_2}}$$

Additional information on random variation in numbers of events, rates, and ratios may be found in the technical appendixes of *Vital Statistics of the United States, 1993, Volumes I and II*.

Rates

Rates are on an annual basis and, except for infant mortality rates, are per 1,000 or 100,000 estimated population residing in the United States. The populations used for computing these rates are furnished by the U.S. Bureau of the Census. Rates shown in this report beginning with 1992 were computed using populations based on the 1990 Census enumeration comparable to those used for final data. Monthly rates are based on populations estimated for the specific month. Year-to-date rates are averages of monthly rates that have been weighted by the number of days in the corresponding months. Rates for 12-month periods are the sum of events for the period per population estimated at the midpoint of the period.

Infant mortality rates are deaths under 1 year of age for the specified period (monthly, year-to-date, or 12-month period) per 1,000 or 100,000 live births. Births used for computing monthly and year-to-date infant mortality rates are adjusted for monthly variation in the number of births. Births used to compute 12-month rates do not contain this adjustment. Births used for computing infant mortality rates are not corrected for observed differences between provisional and final monthly figures as described earlier in “Nature and sources of data.” Because monthly infant mortality rates are based on relatively few events, they are highly variable. Therefore, comparisons of monthly infant mortality rates should be interpreted cautiously; see “[Random variation](#).”

Age-adjusted death rates are used to compare relative mortality risks across groups and over time. However, they should be viewed as constructs or indexes rather than as direct or actual measures of mortality risk. Statistically, they are weighted averages of the age-specific death rates, where the weights represent the fixed population proportions by age. See chapter 5 of an earlier report (1). The age-adjusted death rates presented in this report were computed by the direct method, that is, by applying age-specific death rates to the U.S. standard million population (2). See also chapter 10 of an earlier report (1). Age groups in [table 5](#) were used to compute the age-adjusted

rates shown in that table. It is important not to compare age-adjusted rates with crude rates.

Current Mortality Sample

The Current Mortality Sample (CMS) is a 10-percent systematic sample of death certificates drawn each month after the certificates are counted in the State registration offices. Deaths and death rates for the United States by age, race, sex, and cause are estimated based on the sample. Because of the additional time required to select and process the certificates, data based on the CMS are published 1 month after publication of the U.S. and State counts. Complete information concerning the underlying cause of death sometimes is not available when the sample is drawn. As a result estimates based on sample counts for certain causes are biased. Correction for bias is not made in this report.

Estimated numbers of deaths based on the sample were proportionately adjusted to be consistent with estimates based on the count of death certificates received in State registration offices.

HIV infection—Beginning with data for 1987, the National Center for Health Statistics introduced categories *042–*044 for classifying and coding Human immunodeficiency virus (HIV) infection. The asterisks before the categories indicate that these codes are not part of the

Ninth Revision, International Classification of Diseases. Deaths classified to these categories are included in All other infectious and parasitic diseases in the List of 72 Selected Causes of Death and are also shown separately at the bottom of table 6.

Sampling variability—Because the estimates of deaths and death rates presented in this report with the exception of total deaths and deaths under 1 year are based on a sample of death certificates, they are subject to sampling variability. The estimated relative standard error in the following table is a measure of the

Relative standard errors for estimated numbers of deaths from the Current Mortality Sample expressed as a percent of the estimate

Estimated number of deaths	Relative standard error of estimate (as percent)	
	170,000 estimated deaths each month	2,000,000 estimated deaths each year
10	94.9	94.9
20	67.1	67.1
50	42.4	42.4
100	30.0	30.0
200	21.2	21.2
500	13.4	13.4
1,000	9.5	9.5
2,000	6.7	6.7
5,000	4.2	4.2
10,000	2.9	3.0
20,000	2.0	2.1
50,000	1.1	1.3
100,000	0.6	0.9
200,000	0.6
500,000	0.4
1,000,000	0.2

sampling error of the estimated number of deaths (or of the estimated death rate) expressed as a percent of the estimate. The first column refers to monthly estimates; the second to annual; cumulative year-to-date totals fall between the two.

The chances are about 2 in 3 that the percent difference between an estimate and the result of a complete count is less than the percent shown. The chances are about 19 in 20 that the percent difference is less than twice the percent shown. A figure based on 100 or fewer estimated deaths has a relative standard error of 30 percent or more and is, therefore, considered unreliable. A rate based on 100 or fewer estimated deaths has been replaced by an asterisk.

Unless otherwise specified comparisons made in the text between death rates based on the CMS were statistically significant at the 0.05 level of significance. Lack of comment in the text about any two rates does not mean that the difference was tested and found not to be significant at this level.

References

1. Feinleib M, Zarate AO, eds. Reconsidering age adjustment procedures: Workshop proceedings. National Center for Health Statistics. Vital Health Stat 4(29). 1992.
2. Grove RD, Hetzel AM. Vital statistics rates in the United States, 1940–1960. Public Health Service. Washington: National Center for Health Statistics. 1968.

Suggested citation

National Center for Health Statistics. Births, marriages, divorces, and deaths for January 1997. Monthly vital statistics report; vol 46 no 1. Hyattsville, Maryland: National Center for Health Statistics. 1997.

Copyright information

All material appearing in this report is in the public domain and may be reproduced or copied without permission; citation as to source, however, is appreciated.

National Center for Health Statistics

Director
Edward J. Sondik, Ph.D.

Deputy Director
Jack R. Anderson

Division of Vital Statistics

Director
Mary Anne Freedman

**DEPARTMENT OF
HEALTH & HUMAN SERVICES**

Centers for Disease Control and Prevention
National Center for Health Statistics
6525 Belcrest Road
Hyattsville, Maryland 20782

FIRST CLASS MAIL
POSTAGE & FEES PAID
PHS/NCHS
PERMIT NO. G-281

OFFICIAL BUSINESS
PENALTY FOR PRIVATE USE, \$300

To receive this publication regularly, contact
the National Center for Health Statistics by
calling 301-436-8500
E-mail: nchsquery@nch10a.em.cdc.gov
Internet: <http://www.cdc.gov/nchswww/nchshome.htm>

DHHS Publication No. (PHS) 97-1120
7-0664 (8/97)