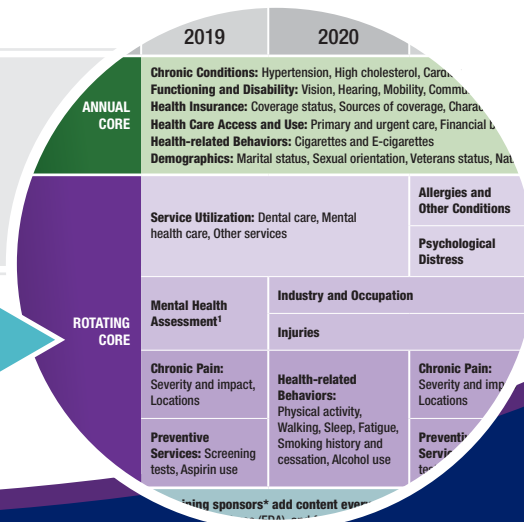




NATIONAL CENTER FOR HEALTH STATISTICS

National Health Interview Survey

NHIS Sample Adult and Child Questionnaires





What is the National Health Interview Survey?

The National Health Interview Survey (NHIS) is the oldest ongoing national health survey in the United States. It is one of the major data collection programs of the National Center for Health Statistics (NCHS).

More than 30,000 confidential interviews are conducted throughout the year by field staff employed and trained by the U.S. Census Bureau, following procedures specified by NCHS. Most interviews are conducted in the respondent's home. In some instances, follow-up to complete the interview is conducted by telephone.

NHIS monitors the health of the civilian noninstitutionalized U.S. population through the collection and analysis of data on a broad range of health topics. A major strength of this survey is its ability to display these health characteristics by many demographic and socioeconomic characteristics. NHIS data are used widely by researchers and policy analysts to monitor trends in illness, disability, health insurance coverage, and use of medical care, and to track progress toward achieving national health objectives.

NHIS has been conducted continuously since 1957. The NHIS questionnaire was redesigned in 2019 to better meet the needs of data users, including establishing a long-term structure of ongoing and periodic topics. This brochure summarizes the topics that will be included in NHIS each year from 2019 through 2027.

NHIS SAMPLE ADULT QUESTIONNAIRE

ADULT

Administered to one randomly selected adult in each household

	2019	2020	2021	2022	2023	2024	2025	2026	2027
ANNUAL CORE	<p>Chronic Conditions: Hypertension, High cholesterol, Cardiovascular conditions, Asthma, Cancer, Diabetes, Other chronic conditions, Height and weight</p> <p>Functioning and Disability: Vision, Hearing, Mobility, Communication, Cognition, Self-care and upper-body limitations, Anxiety, Depression, Social functioning</p> <p>Health Insurance: Coverage status, Sources of coverage, Characteristics of coverage, Continuity of coverage, Reasons for no health insurance</p> <p>Health Care Access and Use: Primary and urgent care, Financial barriers to care, Prescription medication, Flu and pneumonia immunization</p> <p>Health-related Behaviors: Cigarettes and E-cigarettes</p> <p>Demographics: Marital status, Sexual orientation, Veterans status, Nativity, Schooling, Employment, Family income, Food-related program participation, Housing, Telephone use</p>								
ROTATING CORE	Service Utilization: Dental care, Mental health care, Other services		Allergies and Other Conditions	Service Utilization: Dental care, Mental health care, Other services		Allergies and Other Conditions	Service Utilization: Dental care, Mental health care, Other services		Allergies and Other Conditions
			Psychological Distress			Psychological Distress			Psychological Distress
	Mental Health Assessment¹	Industry and Occupation		Mental Health Assessment¹	Industry and Occupation		Mental Health Assessment¹	Industry and Occupation	
		Injuries			Injuries			Injuries	
Chronic Pain: Severity and impact, Locations	Health-related Behaviors: Physical activity, Walking, Sleep, Fatigue, Smoking history and cessation, Alcohol use	Chronic Pain: Severity and impact, Locations	Health-related Behaviors: Physical activity, Walking, Sleep, Fatigue, Smoking history and cessation, Alcohol use	Chronic Pain: Severity and impact, Locations	Health-related Behaviors: Physical activity, Walking, Sleep, Fatigue, Smoking history and cessation, Alcohol use	Chronic Pain: Severity and impact, Locations	Health-related Behaviors: Physical activity, Walking, Sleep, Fatigue, Smoking history and cessation, Alcohol use	Chronic Pain: Severity and impact, Locations	Chronic Pain: Severity and impact, Locations
Preventive Services: Screening tests, Aspirin use		Preventive Services: Screening tests, Aspirin use		Preventive Services: Screening tests, Aspirin use		Preventive Services: Screening tests, Aspirin use		Preventive Services: Screening tests, Aspirin use	
SPONSORED CONTENT	Sustaining sponsors* add content every year. Annual sponsored content will include cancer control and prevention (NCI and NCCDPHP), immunizations (NCIRD), noncigarette tobacco product use (FDA), food security (USDA), and insulin use (NIDDK and NCCDPHP).								
	Other sponsors* add content for selected years. Sponsorships include expanded content on arthritis in 2019 (NCCDPHP and NIAMS), asthma in 2020 (NCCDPHP), diabetes in 2020 and insulin affordability in 2021 (NCCDPHP), prescription opioid use and pain management in 2020 (NCIPC), age of onset of disability in 2020 (ACL), epilepsy in 2021 (NCCDPHP), occupational health in 2021 (NIOSH), and complementary and integrative health in 2022 (NCCIH).								
EMERGING TOPICS	New topics of growing interest may be added by the National Center for Health Statistics, generally for 1 year. In 2019, NCHS added prescription opioid use and pain management.								

* As of March 2020, sponsors include the National Cancer Institute (NCI), National Center for Chronic Disease Prevention and Health Promotion (NCCDPHP), National Center for Immunization and Respiratory Diseases (NCIRD), Food and Drug Administration (FDA), United States Department of Agriculture (USDA), National Institute of Arthritis and Musculoskeletal and Skin Diseases (NIAMS), National Institute of Diabetes and Digestive and Kidney Diseases (NIDDK), National Center for Injury Prevention and Control (NCIPC), Administration for Community Living (ACL), National Institute for Occupational Safety and Health (NIOSH), and National Center for Complementary and Integrative Health (NCCIH). NCCDPHP, NCIRD, NCIPC, and NIOSH are part of the Centers for Disease Control and Prevention. NCI, NIAMS, NIDDK, and NCCIH are part of the National Institutes of Health.

¹Questions come from the Patient Health Questionnaire and the Generalized Anxiety Disorder scale.

NHIS SAMPLE CHILD QUESTIONNAIRE

CHILD

Administered to a parent or guardian of one randomly selected child in each household

	2019	2020	2021	2022	2023	2024	2025	2026	2027
ANNUAL CORE	<p>Health Status: Asthma, Diabetes, Developmental and learning disabilities, Social and emotional screening for very young children</p> <p>Functioning and Disability: Vision, Hearing, Mobility, Self-care, Communication and comprehension, Learning, Emotions, Behaviors</p> <p>Health Insurance: Coverage status, Sources of coverage, Characteristics of coverage, Continuity of coverage, Reasons for no health insurance</p> <p>Health Care Access and Use: Primary and urgent care, Financial barriers to care, Prescription medication, Flu immunization</p> <p>Demographics: Marital status of parent(s), Nativity, Schooling, Employment of family members, Family income, Food-related program participation, Housing, Telephone use</p>								
ROTATING CORE	Service Utilization: Dental care, Mental health care, Other services		Allergies and Other Conditions	Service Utilization: Dental care, Mental health care, Other services		Allergies and Other Conditions	Service Utilization: Dental care, Mental health care, Other services		Allergies and Other Conditions
	Mental Health Assessment¹	Injuries		Mental Health Assessment¹	Injuries		Mental Health Assessment¹	Injuries	
	Stressful Life Events	Health-related Behaviors: Physical activity, Neighborhood characteristics, Sleep, Height and weight	Stressful Life Events	Health-related Behaviors: Physical activity, Neighborhood characteristics, Sleep, Height and weight	Stressful Life Events	Health-related Behaviors: Physical activity, Neighborhood characteristics, Sleep, Height and weight	Stressful Life Events	Health-related Behaviors: Physical activity, Neighborhood characteristics, Sleep, Height and weight	Stressful Life Events
SPONSORED CONTENT	Sustaining sponsors* add content every year. Annual sponsored content will include household food security (USDA).								
	Other sponsors* add content for selected years. Sponsorships include asthma in 2020 (NCCDPHP) and complementary and integrative health in 2022 (NCCIH).								
EMERGING TOPICS	New topics of growing interest may be added by the National Center for Health Statistics, generally for 1 year. In 2020 and 2021, the topics are head injuries and concussions.								

* As of March 2020, sponsors include the United States Department of Agriculture (USDA), National Center for Chronic Disease Prevention and Health Promotion (NCCDPHP), and National Center for Complementary and Integrative Health (NCCIH). NCCDPHP is part of the Centers for Disease Control and Prevention. NCCIH is part of the National Institutes of Health.
¹Questions come from the Strengths and Difficulties Questionnaire.



For more information on the National Health Interview Survey, visit <https://www.cdc.gov/nchs/nhis/>.
 To view full-length questionnaires, visit <https://www.cdc.gov/nchs/nhis/data-questionnaires-documentation.htm>.

Special Thanks to Our Sustaining Sponsors

Sponsored content is used to collect data on new topics or to explore in more depth those subjects already tracked in the National Health Interview Survey (NHIS). Sustaining sponsors are agencies that sponsor content every year or over multiple years.



The National Cancer Institute's Division of Cancer Control and Population Sciences, and the National Center for Chronic Disease Prevention and Health Promotion's (NCCDPHP) Division of Cancer Prevention and Control, are the sustaining sponsors for content on cancer control and prevention. Thanks to their support, NHIS will collect additional information on the following topics in the years shown:

- Colorectal cancer screening (2019, 2021, 2023, 2025, 2027)
- Prostate cancer screening (2019, 2021, 2023, 2025, 2027)
- Breast cancer screening (2019, 2021, 2023, 2025)
- Cervical cancer screening (2019, 2021, 2025, 2027)
- Lung cancer screening (2020, 2024)
- Sun protection (2020, 2024)
- Physical activity and walkable communities (2020, 2024)
- Diet and nutrition (2022, 2026)
- Tobacco use and control (2022, 2026)
- Cancer risk assessment (2023, 2027)



Centers for Disease Control and Prevention
National Center for Chronic Disease Prevention and Health Promotion



The National Institute of Diabetes and Digestive and Kidney Diseases and NCCDPHP also sponsor annual data collection on insulin use for diabetes.



Centers for Disease Control and Prevention
National Center for Immunization and Respiratory Diseases

The National Center for Immunization and Respiratory Diseases sponsors additional annual questions on immunization.



The U.S. Department of Agriculture sponsors annual questions on noncigarette tobacco product use.



The U.S. Food and Drug Administration sponsors annual questions on household food security.



NHIS

National Center for Health Statistics



<https://www.cdc.gov/nchs/nhis/> • Inquiries or suggestions: 301-458-4901, nhislist@cdc.gov