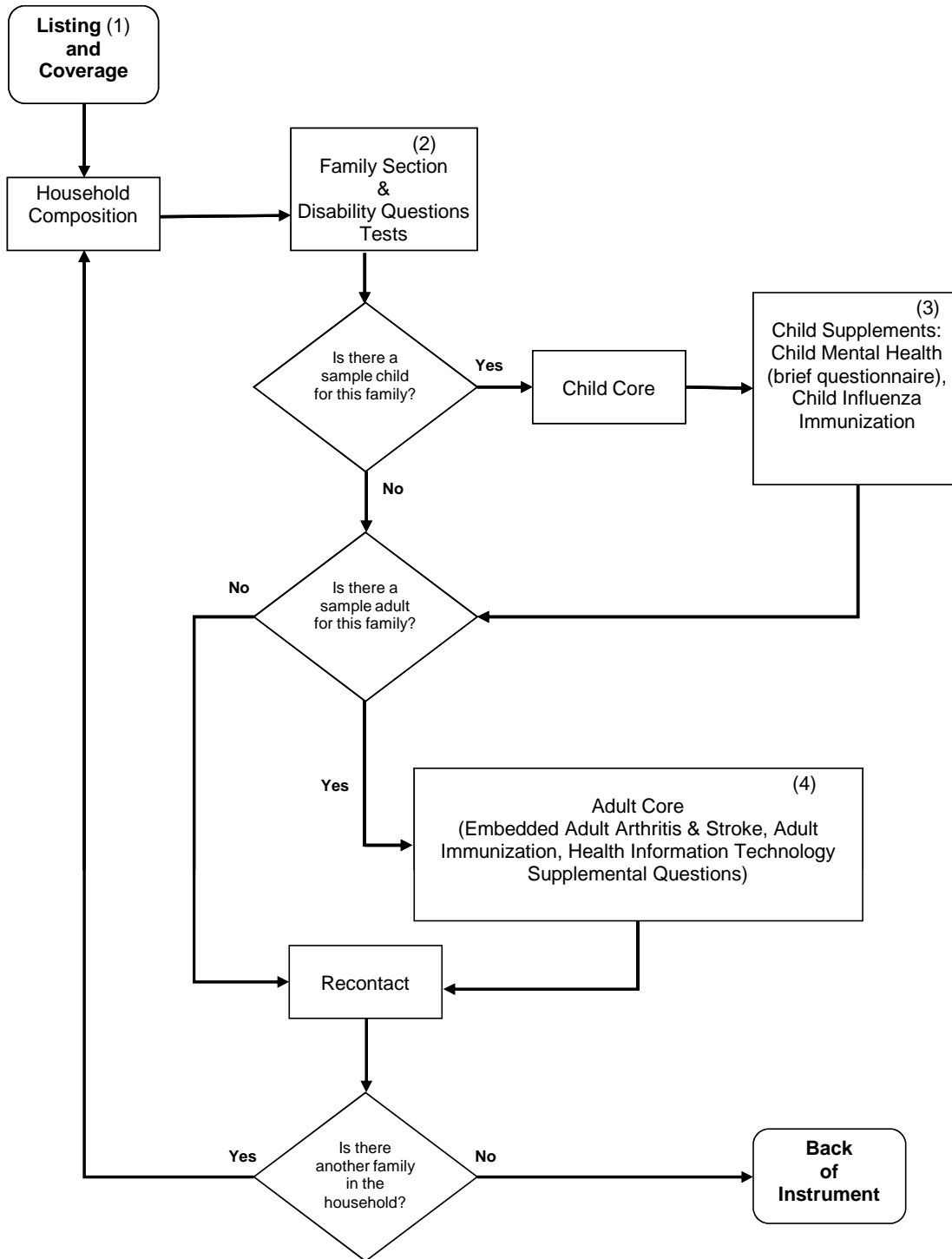


## Flowchart of the 2009 NHIS Questionnaire Components



(1) NHIS over sampled households with Blacks, Asians, and Hispanics.

(2) 2009 Family Core includes one Carbon Monoxide Supplement question at the end of the Injury/Poison (FIJ) section, and one Oral Health Supplement question embedded in the Health Insurance (FHI) section. A Split-Ballot test of ACS and CPS disability questions are added to the end of the Family Core (FIN) section.

(3) 2009 Child Supplement includes one Child Mental Health Supplement question, and Child Influenza Immunization in the CFI section.

(4) 2009 Adult Core includes Adult Arthritis & Stroke Supplemental Questions embedded in the Adult Condition (ACN) section, and Adult Immunization and Health Information Technology Supplement (HIT) embedded in the Adult Health Care Access and Utilization (AAU) section.