

# Monthly Vital Statistics Report



Provisional Data From the CENTERS FOR DISEASE CONTROL AND PREVENTION/National Center for Health Statistics

## Births, Marriages, Divorces, and Deaths for April 1997

### Births

According to provisional reports, an estimated 340,000 births occurred in the United States during April 1997. This was an 8-percent increase from the provisional number of births reported for April 1996 (314,000). The birth rate, 15.5 live births per 1,000 population, was 7 percent higher than the rate of 14.5 for April 1996. The fertility rate, 69.4 live births per 1,000 women 15–44 years, was 8 percent higher than the comparable rate for April 1996 (64.3). The seasonally adjusted fertility rate (71.2) was also 8 percent higher than the comparable rate for April 1996 (65.9).

During the first 4 months of 1997, an estimated 1,241,000 births occurred, a 1-percent decrease from the 1,253,000 reported for the first one-third of 1996. The birth rate for this period decreased by 1 percent from 14.3 in 1996 to 14.2 in 1997. The fertility rate for the first one-third of 1997 was 63.3, 1 percent lower than the rate for the first one-third of 1996 (63.7).

An estimated 3,887,000 live births occurred in the 12-month period ending with April 1997, a slight increase from the 3,857,000 births reported for the same period a year earlier. The birth rate of 14.6 was the same as the rate for the preceding 12-month period. The fertility rate for the most recent 12-month period was 65.2,

slightly higher than the rate for the 12 months ending with April 1996 (64.8). This combination of a constant birth rate and only a slightly changed fertility rate points to a slowdown of the generally downward trend observed since early 1991.

### Natural increase

As a result of natural increase, the excess of births over deaths, an estimated 151,000 people, or 6.9 persons per 1,000 population, were added to the population during April 1997.

For the 12-month period ending with April 1997, 1,591,000 persons were added to the population.

### Provisional Vital Statistics for the United States

[Rates for infant deaths are deaths under 1 year per 1,000 live births; fertility rates are live births per 1,000 women aged 15–44 years; all other rates are per 1,000 total population. Data are subject to monthly reporting variation; see [Technical notes](#)]

Item	April				January–April				12 months ending with April				
	Number		Rate		Number		Rate		Number		Rate		
	1997	1996	1997	1996	1997	1996	1997	1996	1997	1996	1997	1996	1995
Live births . . . . .	340,000	314,000	15.5	14.5	1,241,000	1,253,000	14.2	14.3	3,887,000	3,857,000	14.6	14.6	15.2
Fertility rate . . . . .	...	...	69.4	64.3	...	...	63.3	63.7	...	...	65.2	64.8	66.8
Deaths . . . . .	189,000	192,000	8.6	8.8	795,000	810,000	9.1	9.3	2,296,000	2,298,000	8.6	8.7	8.8
Infant deaths . . . . .	2,100	2,300	6.3	7.5	8,800	9,400	7.1	7.5	27,500	28,600	7.1	7.4	7.8
Natural increase . . . . .	151,000	122,000	6.9	5.7	446,000	443,000	5.1	5.0	1,591,000	1,559,000	6.0	5.9	6.4
Marriages . . . . .	192,000	172,000	9.1	8.2	640,000	575,000	7.6	6.8	2,410,000	2,340,000	9.1	8.9	9.0
Divorces . . . . .	106,000	95,000	4.8	4.4	380,000	367,000	4.3	4.2	1,163,000	1,155,000	4.4	4.4	4.5
Population base (in millions) . . . . .	...	...	267	264.6	...	...	...	...	...	...	266.1	263.6	261.6

... Category not applicable.

NOTES: Figures include revisions received from the States. Twelve-month figures for the current year reflect revisions received for previous months, and figures for earlier years may differ from those previously published.



U.S. DEPARTMENT OF HEALTH AND HUMAN SERVICES  
Centers for Disease Control and Prevention  
National Center for Health Statistics



This represented a rate of natural increase of 6.0, 2 percent higher than the rate of 5.9 for the preceding 12-month period. The increase in the rate of natural increase was due to a steady birth rate and a decreasing death rate.

**Marriages**

An estimated 192,000 marriages were reported in April 1997, yielding a current monthly marriage rate of 9.1 per 1,000 population.

The number of marriages reported in the first one-third of 1997 was 640,000, 11 percent higher than the number reported in the comparable period for 1996 (575,000). The marriage rate (7.6) for the 4-month period in 1997 was 12 percent higher than the rate in 1996 (6.8).

Approximately 2,410,000 marriages were performed during the 12-month period ending with April 1997, an increase of 3 percent from the number performed during the same period a year earlier (2,340,000). The marriage rate for the current 12-month period (9.1) was 2 percent higher than the rate for the period ending with April 1996 (8.9).

**Divorces**

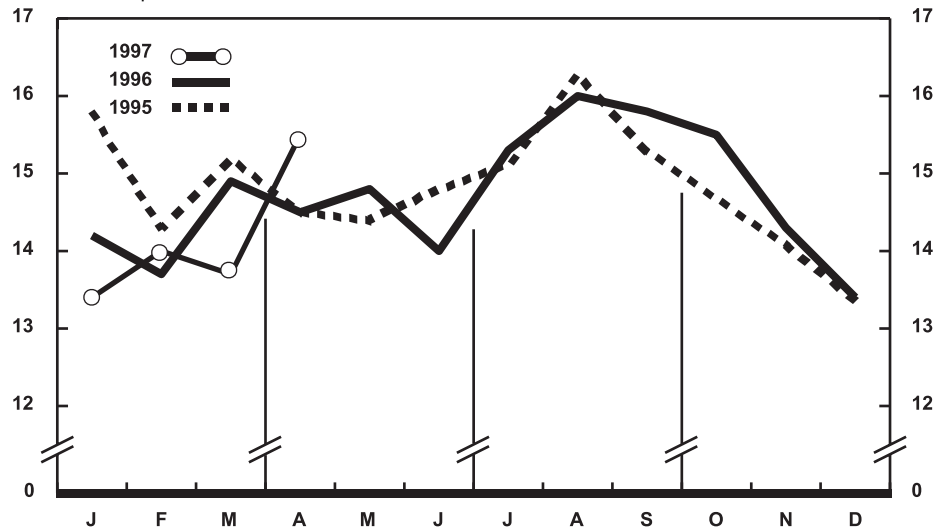
An estimated 106,000 divorces were reported in April 1997, yielding a current monthly divorce rate of 4.8 divorces per 1,000 population.

The number of divorces granted in the first one-third of 1997 was 380,000, 4 percent more than were granted for the same period in 1996 (367,000). The divorce rate (4.3) for the 4-month period in 1997 was 2 percent higher than the rate for the same period in 1996 (4.2).

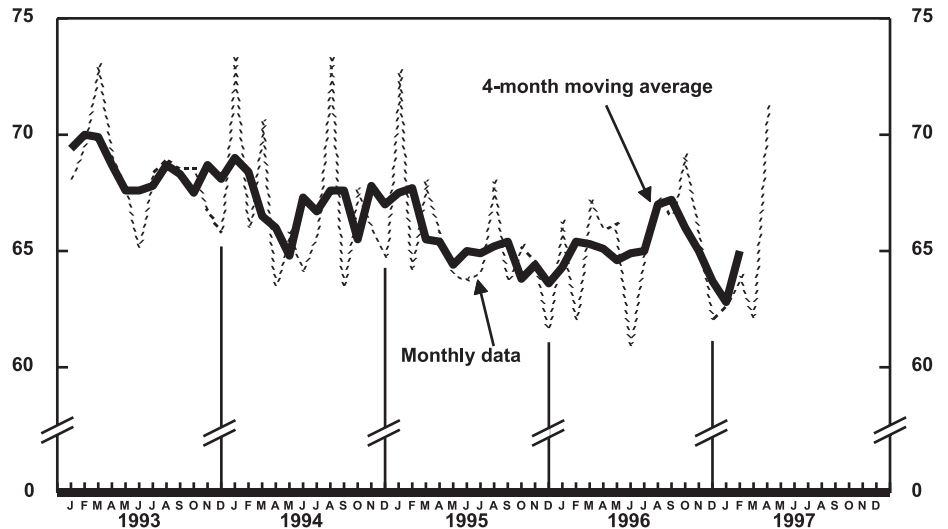
Approximately 1,163,000 couples divorced during the 12-month period ending with April 1997, 1 percent more than the number divorced during the comparable period ending with April 1996 (1,155,000). The divorce rate per 1,000 population for the 12-month period ending with April 1997 (4.4) was the same as the rate for the period ending with April 1996.

**Deaths**

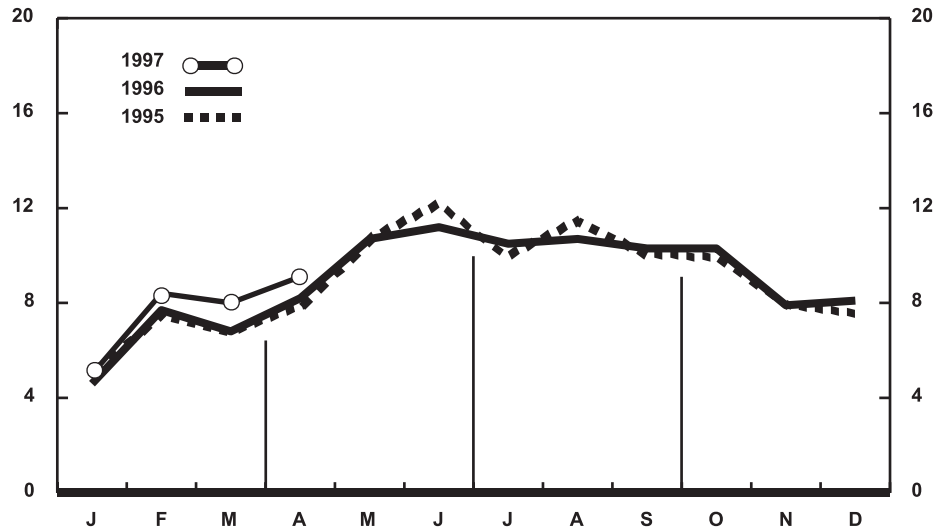
For April 1997 an estimated 189,000 deaths occurred in the United States. The death rate was 8.6 deaths per 1,000 population, 2 percent lower than the rate of 8.8



Provisional birth rates per 1,000 population by month: United States, 1995-97



Provisional seasonally adjusted fertility rates per 1,000 women aged 15-44 years: United States, 1993-97



Provisional marriage rates per 1,000 population by month: United States, 1995-97

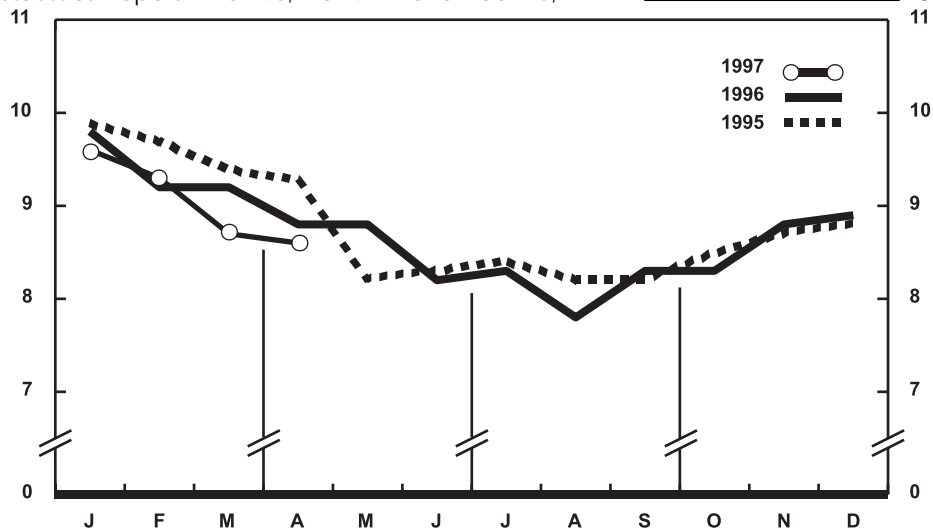
for April a year earlier. Among the 189,000 deaths for April 1997 were 2,100 deaths at ages under 1 year.

According to provisional statistics, 795,000 deaths occurred during the first 4 months of 1997, a decrease of 2 percent from the deaths that occurred during the first 4 months of 1996 (810,000). The death rate, 9.1 per 1,000 population, was also 2 percent lower than the rate for January–April 1996 (9.3). Among the 795,000 deaths reported for the first 4 months of 1997 were 8,800 deaths at ages under 1 year, yielding an infant mortality rate of 7.1 per 1,000 live births, 5 percent lower than the rate of 7.5 for the comparable 4-month period in 1996.

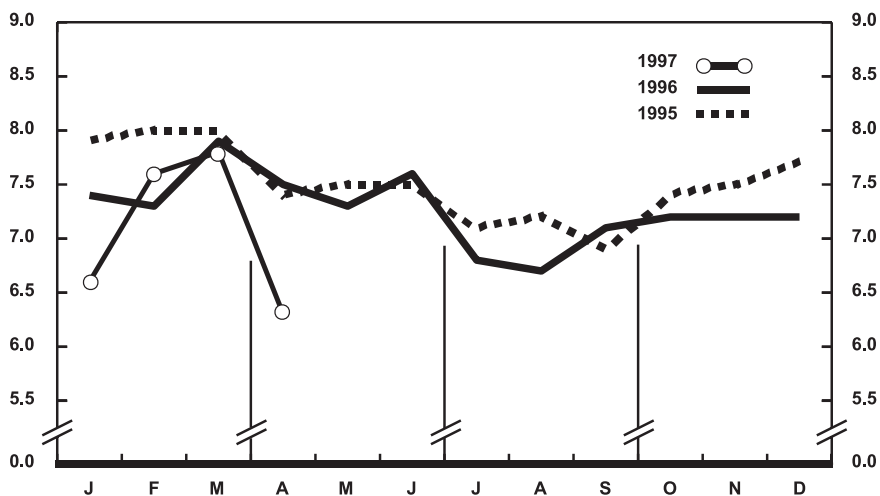
The death rate for the 12 months ending with April 1997 was 8.6 deaths per 1,000 population, 1 percent lower than the rate for the comparable 12-month period a year earlier (8.7). The infant mortality rate for this 12-month period was 7.1 per 1,000 live births, 4 percent lower than the rate of 7.4 for the 12 months ending with April 1996.

*Current Mortality Sample, 12 months ending with March 1997*—The provisional death rate for the 12 months ending with March 1997 was 864.7 per 100,000 population, 1 percent lower than the rate of 875.3 for the 12-month period ending March 1996. The provisional age-adjusted death rate for the 12-month period ending with March 1997 was 485.6 per 100,000 U.S. standard population, 3 percent lower than the rate of 499.5 for the 12-month period ending with March 1996. Age-adjusted death rates control for changes and variations in the age composition of the population; therefore, they are better indicators than crude rates for showing changes in mortality risk over time and for showing differences between race-sex groups within the population. Among the race-sex groups, the estimated age-adjusted death rates decreased for white males and black males. By age the death rate for the total population decreased for the following age groups: 1–4 years, 25–34 years, 35–44 years, 45–54 years, 55–64 years, and 75–84 years of age.

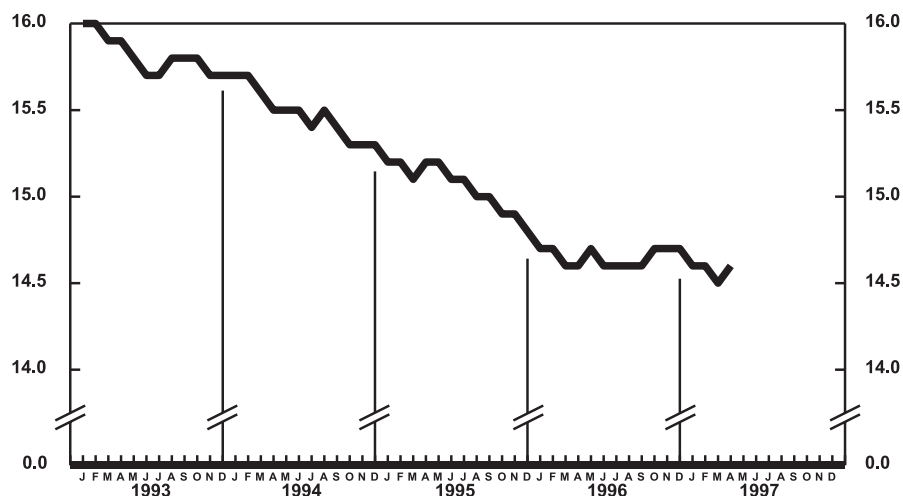
Among the major causes of death, the estimated death rate decreased between the two successive 12-month periods for



Provisional death rates per 1,000 population by month: United States, 1995–97



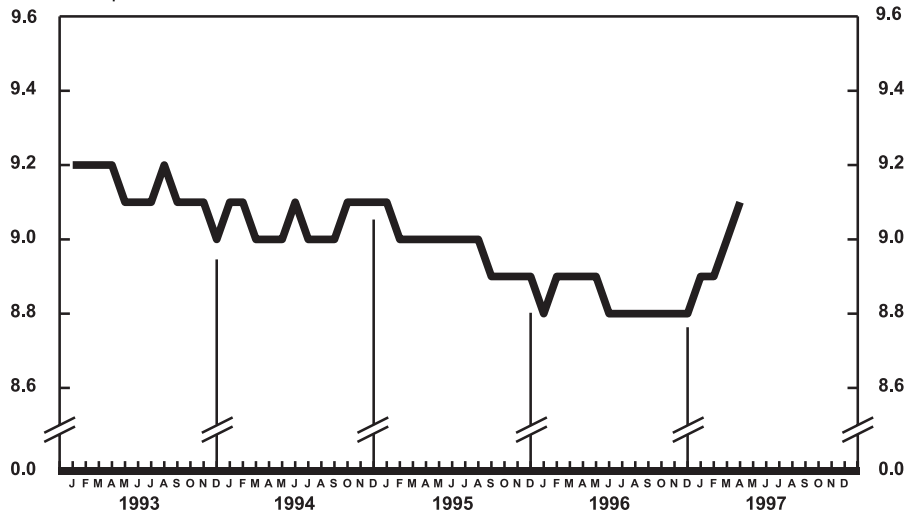
Provisional infant mortality rates per 1,000 live births by month: United States, 1995–97



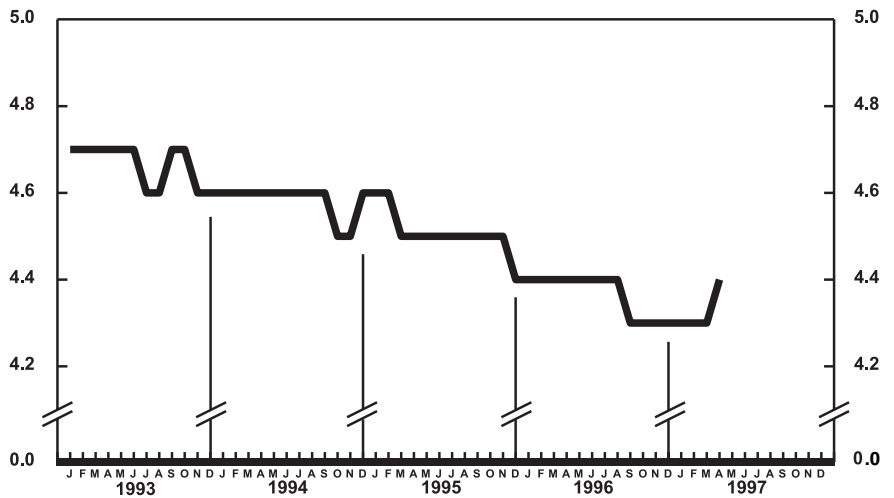
Provisional birth rates per 1,000 population for successive 12-month periods ending with month indicated: United States, 1993–97

Diseases of heart, Human immunodeficiency virus infection, and Homicide and legal intervention. The decrease for Homicide and legal intervention was largely due to the decline in the rate for homicide by firearms. The death rate increased between the two successive 12-month periods for Diabetes mellitus.

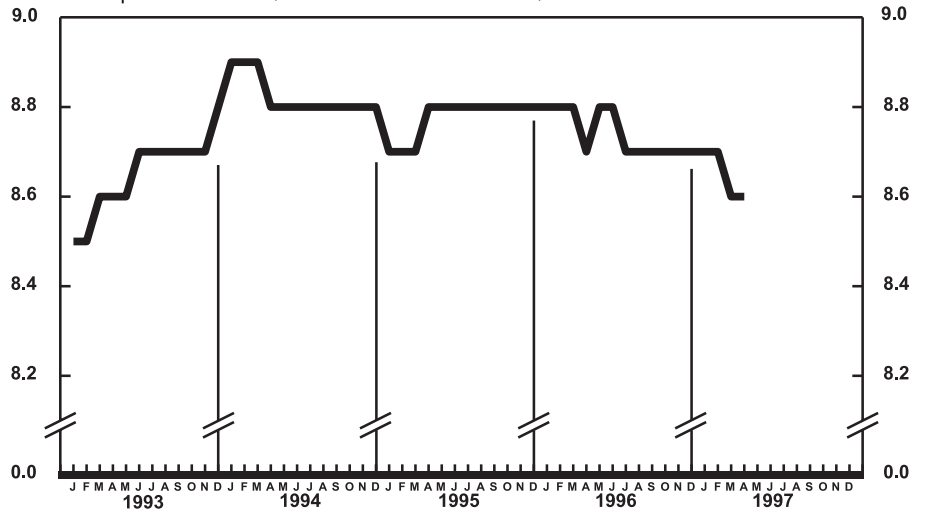
The infant mortality rate for the 12 months ending with March 1997 was 720.3 per 100,000 live births, 3 percent lower than the rate of 745.0 for the same 12-month period a year earlier. For infants under 28 days of age, the 12-month rate ending March 1997 was 469.8 compared with a rate of 473.6 for the 12-month period a year earlier. The infant mortality rate for infants aged 28 days–11 months was 249.3 compared with a rate of 270.5 for the 12-month period a year earlier. The changes in the mortality rates for infants under 28 days of age and for infants aged 28 days–11 months were not statistically significant. Among causes of infant death, the infant mortality rate showed no significant changes between the two successive 12-month periods.



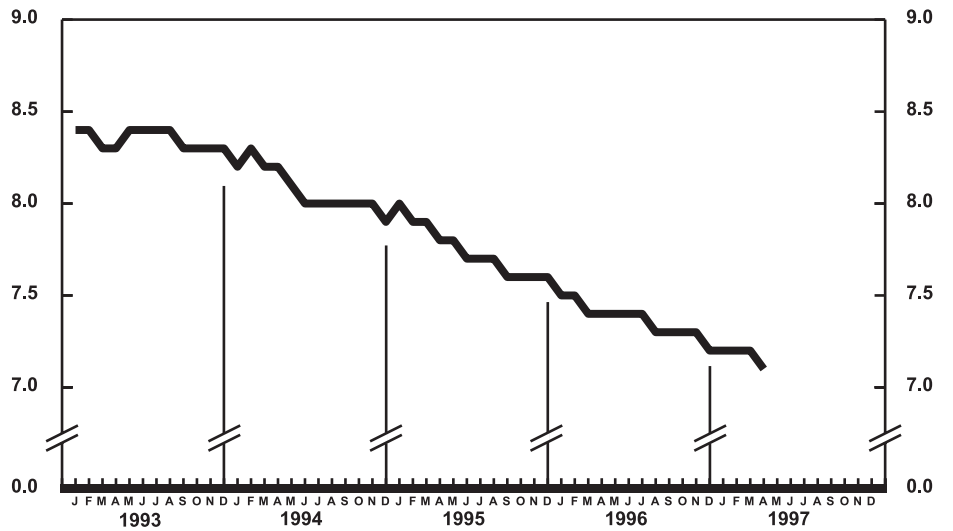
Provisional marriage rates per 1,000 population for successive 12-month periods ending with month indicated: United States, 1993–97



Provisional divorce rates per 1,000 population for successive 12-month periods ending with month indicated: United States, 1993–97



Provisional death rates per 1,000 population for successive 12-month periods ending with month indicated: United States, 1993-97



Provisional infant mortality rates per 1,000 live births for successive 12-month periods ending with month indicated: United States, 1993-97

**Table 1. Provisional number of live births, marriages, divorces, deaths, and infant deaths and rates, by month: United States, January 1996–April 1997**

[Data are provisional and are subject to monthly reporting variation; see [Technical notes](#)]

Period	Live births				Marriages		Divorces		Deaths		Infant deaths	
	Number	Rate per 1,000 population	Rate per 1,000 women aged 15–44 years		Number	Rate per 1,000 population	Number	Rate per 1,000 population	Number	Rate per 1,000 population	Number	Rate per 1,000 live births
			Unadjusted	Seasonally adjusted <sup>1</sup>								
<b>1996:</b>												
January . . . . .	318,000	14.2	63.2	66.3	100,000	4.6	94,000	4.2	220,000	9.8	2,400	7.4
February . . . . .	286,000	13.7	60.7	62.0	155,000	7.7	85,000	4.1	193,000	9.2	2,200	7.3
March . . . . .	334,000	14.9	66.3	67.3	147,000	6.8	93,000	4.2	206,000	9.2	2,600	7.9
April . . . . .	314,000	14.5	64.3	65.9	172,000	8.2	95,000	4.4	192,000	8.8	2,300	7.5
May . . . . .	332,000	14.8	65.7	66.2	241,000	10.7	103,000	4.6	198,000	8.8	2,400	7.3
June . . . . .	304,000	14.0	62.2	61.0	242,000	11.2	103,000	4.8	179,000	8.2	2,300	7.6
July . . . . .	343,000	15.3	67.9	65.2	235,000	10.5	96,000	4.3	187,000	8.3	2,300	6.8
August . . . . .	360,000	16.0	71.3	67.3	239,000	10.7	101,000	4.5	176,000	7.8	2,200	6.7
September . . . . .	345,000	15.8	70.6	66.5	225,000	10.3	92,000	4.2	182,000	8.3	2,400	7.1
October . . . . .	348,000	15.5	68.9	69.2	231,000	10.3	99,000	4.4	188,000	8.3	2,500	7.2
November . . . . .	313,000	14.3	63.9	66.0	171,000	7.9	94,000	4.3	191,000	8.8	2,300	7.2
December . . . . .	302,000	13.4	59.8	62.1	184,000	8.1	94,000	4.2	200,000	8.9	2,300	7.2
<b>1997:</b>												
January . . . . .	303,000	13.4	59.8	62.7	109,000	5.0	93,000	4.1	218,000	9.6	2,100	6.6
February . . . . .	287,000	14.0	62.7	63.9	165,000	8.4	87,000	4.2	191,000	9.3	2,200	7.6
March . . . . .	311,000	13.7	61.4	62.2	174,000	8.0	94,000	4.1	197,000	8.7	2,500	7.8
April . . . . .	340,000	15.5	69.4	71.2	192,000	9.1	106,000	4.8	189,000	8.6	2,100	6.3

<sup>1</sup>The method of seasonal adjustment, developed by the U.S. Bureau of the Census, is described in *The X-11 Variant of the Census Method II Seasonal Adjustment Program*, Technical Paper No. 15 (1967 revision).

NOTE: Figures include all revisions received from the States and, therefore, may differ from those previously published.

**Table 2. Provisional number of live births and deaths: Each division and State, April 1996 and 1997, and cumulative figures, 1995–97**[Data are estimates by State of residence; see [Technical notes](#)]

Area	Live births					Deaths				
	April		January–April			April		January–April		
	1997	1996	1997	1996	1995	1997	1996	1997	1996	1995
New England	15,518	13,646	59,954	55,521	62,851	10,592	9,610	42,158	38,677	42,218
Maine	1,133	1,136	4,382	4,244	4,343	996	973	3,714	3,961	3,815
New Hampshire	1,140	1,047	4,625	3,992	4,844	688	703	3,374	3,058	3,302
Vermont	686	548	2,138	2,111	2,221	575	370	2,042	1,731	1,846
Massachusetts	7,326	6,708	32,177	29,057	30,631	5,042	5,022	19,471	17,839	20,616
Rhode Island	1,027	1,182	3,815	4,026	3,679	794	780	3,494	3,186	3,403
Connecticut	4,206	3,025	12,817	12,091	17,133	2,497	1,762	10,063	8,902	9,236
Middle Atlantic	46,985	47,922	167,678	169,337	168,678	30,669	30,392	129,299	127,473	133,775
New York	23,182	23,935	85,403	88,179	84,199	14,043	13,493	59,384	56,937	60,784
New Jersey	10,764	12,234	32,429	31,518	33,705	5,630	6,102	24,226	25,298	27,073
Pennsylvania	13,039	11,753	49,846	49,640	50,774	10,996	10,797	45,689	45,238	45,918
East North Central	52,089	50,385	194,193	203,337	197,043	32,192	33,706	133,587	138,222	135,926
Ohio	12,385	12,854	46,343	48,801	48,205	8,874	9,351	37,414	37,353	36,928
Indiana	6,958	6,045	25,375	26,670	22,111	3,826	4,238	15,645	18,708	17,638
Illinois	15,420	14,518	57,358	59,258	59,460	8,701	8,809	35,368	36,569	37,770
Michigan	11,634	10,956	43,387	46,364	45,717	7,049	7,415	28,998	29,392	28,303
Wisconsin	5,692	6,012	21,730	22,244	21,550	3,742	3,893	16,162	16,200	15,287
West North Central	20,059	20,193	82,901	83,652	82,576	14,590	13,857	62,228	58,994	59,896
Minnesota	5,467	5,348	20,941	20,751	20,021	3,155	3,061	13,241	12,800	12,755
Iowa	2,738	2,728	11,334	10,289	10,484	2,693	2,201	10,066	9,013	8,742
Missouri	5,366	5,070	25,269	24,804	25,343	4,255	4,117	19,714	19,141	20,478
North Dakota	689	711	2,721	2,725	2,863	506	492	2,199	1,991	2,116
South Dakota	752	891	3,351	3,041	3,489	685	508	2,624	1,964	2,317
Nebraska	2,119	1,988	7,211	7,832	7,726	1,290	1,325	5,442	5,365	5,286
Kansas	2,928	3,457	12,074	14,210	12,650	2,006	2,153	8,942	8,720	8,202
South Atlantic	56,221	54,660	215,257	212,960	218,468	36,671	37,991	156,038	159,715	157,809
Delaware	781	912	3,262	3,452	3,140	562	538	2,288	2,235	2,111
Maryland	6,529	6,395	20,396	23,314	23,769	3,531	3,438	13,290	14,406	14,003
District of Columbia	685	659	2,648	2,698	2,958	476	498	2,078	2,157	2,250
Virginia	7,657	7,310	27,599	26,671	33,051	4,489	4,345	18,512	18,170	19,033
West Virginia	1,752	2,019	7,386	6,717	7,343	1,847	1,750	7,833	6,299	7,046
North Carolina	9,324	10,614	35,630	36,021	32,849	5,427	5,785	23,489	23,867	23,220
South Carolina	4,872	3,670	17,449	16,669	15,987	2,543	2,641	10,690	12,210	11,749
Georgia	9,642	8,602	39,285	37,820	38,657	4,874	5,082	21,435	22,072	20,790
Florida	14,979	14,479	61,602	59,598	60,714	12,922	13,914	56,423	58,299	57,607
East South Central	18,133	18,687	70,429	70,503	72,403	14,062	13,143	56,498	55,712	56,403
Kentucky	4,040	4,362	17,066	17,400	15,984	3,291	3,400	14,040	13,735	14,345
Tennessee	5,893	5,769	21,891	19,946	22,619	5,117	3,787	17,984	16,392	17,415
Alabama	4,615	4,627	19,337	20,330	20,725	3,288	3,786	15,060	15,982	15,335
Mississippi	3,585	3,929	12,135	12,827	13,075	2,366	2,170	9,414	9,603	9,308
West South Central	35,769	34,377	142,107	141,351	166,800	19,796	19,837	77,602	84,216	84,569
Arkansas	2,565	2,845	11,140	11,423	10,874	2,331	2,229	8,400	9,083	8,665
Louisiana	4,175	4,563	20,289	21,825	22,717	3,068	4,053	13,069	15,929	13,839
Oklahoma	4,594	3,114	14,607	14,352	14,758	3,272	2,759	12,334	12,004	11,512
Texas <sup>1</sup>	24,435	23,855	96,071	93,751	118,451	11,125	10,796	43,799	47,200	50,553
Mountain	30,526	19,356	90,469	80,916	82,298	9,871	11,850	40,869	41,545	39,734
Montana	852	919	3,290	3,545	3,548	646	611	2,599	2,620	2,649
Idaho	1,701	1,648	5,459	6,247	5,485	736	718	3,183	2,875	2,807
Wyoming	506	569	2,127	2,033	2,134	311	293	1,267	1,147	1,274
Colorado	4,843	3,846	18,668	15,924	17,226	2,060	2,289	9,042	9,086	8,685
New Mexico	1,854	1,934	8,519	8,842	8,665	1,067	1,204	4,989	4,532	4,422
Arizona	13,220	5,370	30,061	25,281	25,924	3,088	4,522	11,164	12,721	11,872
Utah	3,675	3,481	14,636	12,781	12,502	998	1,022	4,116	3,844	3,578
Nevada	3,875	1,589	7,709	6,263	6,814	965	1,191	4,509	4,720	4,447
Pacific	64,768	54,304	210,867	225,669	233,492	20,572	21,150	97,153	105,505	109,974
Washington	6,527	6,710	24,797	26,877	24,391	3,162	3,447	15,426	14,107	13,244
Oregon	3,295	3,788	15,156	15,445	14,703	2,491	1,983	10,715	10,207	9,925
California <sup>1</sup>	52,732	41,515	162,464	173,928	184,955	14,083	14,852	67,591	77,725	83,434
Alaska	821	975	3,085	3,356	3,509	198	205	688	729	714
Hawaii	1,393	1,316	5,365	6,063	5,934	638	663	2,733	2,737	2,657
Puerto Rico <sup>2</sup>	4,981	4,484	22,212	19,757	19,631	2,530	2,202	9,608	8,793	9,664

<sup>1</sup>Figures include adjustments for varying lengths of reporting periods; see [Technical notes](#).<sup>2</sup>Data for Puerto Rico are not included in U.S. total figures.

NOTES: Figures include all revisions received from the States. Cumulative figures for the current year reflect revisions received for previous months, and figures for earlier years may differ from those previously published.

**Table 3. Provisional number of marriages and divorces: Each division and State, April 1996 and 1997, and cumulative figures, 1995–97**

[By State of occurrence. Number of events reported; see [Technical notes](#). Divorces include reported annulments]

Area	Marriages					Divorces				
	April		January–April			April		January–April		
	1997	1996	1997	1996	1995	1997	1996	1997	1996	1995
New England	15,341	3,632	18,237	15,576	18,476	2,916	2,936	11,001	11,450	12,674
Maine	---	252	---	1,503	1,452	404	521	959	1,411	1,541
New Hampshire	472	415	2,095	1,696	1,579	435	312	1,917	1,508	1,578
Vermont	269	211	1,125	1,048	1,165	282	156	934	835	1,024
Massachusetts	2,645	1,029	8,592	6,150	9,413	730	928	2,930	3,366	4,314
Rhode Island	548	481	1,781	1,424	1,209	241	223	1,007	1,017	1,140
Connecticut	1,407	1,244	4,644	3,755	3,658	824	796	3,254	3,313	3,077
Middle Atlantic	23,831	19,372	81,967	56,072	58,437	12,508	9,143	42,799	37,587	39,685
New York <sup>2</sup>	14,597	11,201	57,218	33,673	34,435	6,185	3,686	21,808	17,348	18,779
New Jersey	4,914	3,562	11,901	10,151	10,599	2,380	2,256	8,952	8,256	8,062
Pennsylvania	4,320	4,609	12,848	12,248	13,403	3,943	3,201	12,039	11,983	12,844
East North Central	20,539	21,111	73,845	67,526	72,774	10,854	10,426	44,215	43,556	49,096
Ohio	5,099	5,258	19,088	16,774	20,878	3,157	2,940	13,622	13,125	16,447
Indiana	2,754	3,801	9,621	10,902	11,678	---	---	---	---	---
Illinois	6,551	5,906	24,823	19,516	19,874	3,550	3,031	12,517	11,740	13,183
Michigan	4,055	4,089	13,363	13,589	13,933	2,761	3,225	12,282	13,073	13,672
Wisconsin	2,080	2,057	6,950	6,745	6,411	1,386	1,230	5,794	5,618	5,794
West North Central	9,667	9,694	33,394	33,661	32,515	6,506	6,391	23,071	24,709	24,872
Minnesota	2,077	2,278	6,212	6,706	5,839	1,260	1,424	4,621	4,815	4,965
Iowa	1,481	1,462	4,836	4,285	4,555	1,045	842	3,359	3,299	3,813
Missouri	3,069	3,057	11,348	12,309	11,342	2,011	2,309	8,047	8,639	9,124
North Dakota	149	270	836	932	761	159	201	651	751	714
South Dakota	422	447	1,455	1,363	1,568	228	231	878	880	954
Nebraska	1,012	982	2,998	2,917	2,781	494	591	2,022	2,034	2,081
Kansas	1,457	1,198	5,709	5,149	5,669	1,309	793	3,493	4,291	3,221
South Atlantic	43,526	35,808	141,593	124,142	124,143	23,822	20,566	77,929	67,095	71,640
Delaware	431	393	1,322	1,193	1,170	321	299	1,016	1,096	1,322
Maryland	3,120	2,490	9,739	8,914	9,418	1,379	1,468	4,668	4,586	4,792
District of Columbia	202	152	428	418	430	44	115	335	323	447
Virginia	4,756	4,786	17,657	15,653	17,410	4,724	2,659	11,132	8,474	8,430
West Virginia	446	713	1,899	2,454	2,323	664	231	3,007	1,705	2,732
North Carolina	5,897	4,170	17,929	15,743	16,496	4,161	3,142	12,428	10,494	11,923
South Carolina	3,785	3,595	12,385	12,769	12,472	1,562	1,169	5,016	4,981	4,800
Georgia	5,076	4,989	18,761	17,722	17,947	3,368	2,978	12,468	11,172	11,470
Florida	19,813	14,520	61,473	49,276	46,477	7,599	8,505	27,859	24,264	25,724
East South Central	13,543	14,219	56,201	51,648	54,740	6,801	7,400	26,980	32,296	31,462
Kentucky	3,726	2,666	13,177	10,512	12,879	1,840	1,892	7,355	7,201	7,557
Tennessee	5,400	6,380	22,640	21,358	25,567	1,801	2,425	8,057	11,830	11,026
Alabama	2,774	3,667	13,449	13,790	10,411	1,516	2,348	6,695	8,730	8,110
Mississippi	1,643	1,506	6,935	5,988	5,883	1,644	735	4,873	4,535	4,769
West South Central	20,295	18,060	77,839	77,987	92,109	12,839	10,787	49,794	43,949	45,016
Arkansas	3,249	2,793	7,749	8,747	9,273	1,200	1,025	3,900	3,725	4,369
Louisiana	1,312	1,845	2,804	10,182	11,252	---	---	---	---	---
Oklahoma	2,190	2,189	8,110	7,743	7,635	1,639	1,766	5,894	6,728	7,075
Texas <sup>3</sup>	13,544	11,233	59,176	51,315	63,949	---	7,996	---	33,496	33,572
Mountain	16,999	22,427	71,543	83,465	79,897	12,902	16,955	41,236	42,904	43,472
Montana	345	328	1,206	1,329	1,245	346	374	1,227	1,394	1,231
Idaho	1,071	892	3,963	3,756	4,213	686	654	2,601	2,378	2,259
Wyoming	251	325	1,132	1,062	1,037	253	332	1,000	1,047	1,136
Colorado	2,092	2,062	8,430	8,173	8,112	---	---	---	---	---
New Mexico <sup>4,5</sup>	1,309	1,330	5,046	4,951	4,022	856	1,064	3,460	3,937	3,397
Arizona <sup>2</sup>	---	3,884	---	12,988	12,317	---	2,145	---	8,439	8,179
Utah	1,228	1,493	5,663	5,959	6,067	761	945	2,948	2,918	3,178
Nevada	10,703	12,113	46,103	45,247	42,884	---	1,441	---	4,791	4,092
Pacific	26,345	20,903	94,501	91,289	69,328	13,770	13,283	45,534	46,707	46,806
Washington	2,661	1,863	10,910	10,529	10,087	1,960	1,191	8,483	9,070	9,173
Oregon	1,903	1,255	6,451	5,629	6,636	1,264	1,351	4,732	5,134	4,912
California	19,861	15,842	69,857	67,900	45,599	---	---	---	---	---
Alaska	327	328	1,205	1,286	1,368	185	258	888	935	947
Hawaii	1,593	1,615	6,078	5,945	5,638	361	483	1,431	1,568	1,774
Puerto Rico <sup>6</sup>	2,261	2,310	9,405	9,304	9,413	---	---	---	---	---

--- Data not available.

<sup>1</sup>Excludes figures for State(s) shown below as not available.

<sup>2</sup>Figures for marriages are marriage licenses issued for some counties.

<sup>3</sup>Figures include adjustments for varying lengths of reporting periods; see [Technical notes](#).

<sup>4</sup>Figures for marriages are marriage licenses issued.

<sup>5</sup>Figures for divorces include estimates for some counties.

<sup>6</sup>Data for Puerto Rico are not included in U.S. total figures.

NOTES: Figures include all revisions received from the States. Cumulative figures for the current year reflect revisions received for previous months, and figures for earlier years may differ from those previously published.



**Table 4. Provisional number of deaths under 1 year and infant mortality rates: Each division and State, 12 months ending with April 1996 and 1997**

[Data are estimates by State of residence. Figures should be interpreted with caution because of conversion of place of occurrence to place of residence; see [Technical notes](#). Infant mortality rates are deaths under 1 year per 1,000 live births in specified area]

Area	12 months ending with April			
	1997		1996	
	Number	Rate	Number	Rate
New England . . . . .	935	5.3	901	5.3
Maine . . . . .	45	3.2	85	6.1
New Hampshire . . . . .	80	5.4	58	4.1
Vermont . . . . .	48	7.1	51	7.6
Massachusetts . . . . .	392	4.7	381	4.6
Rhode Island . . . . .	74	6.0	83	6.4
Connecticut . . . . .	296	6.6	243	6.1
Middle Atlantic . . . . .	3,643	6.8	3,857	7.3
New York . . . . .	1,790	6.7	1,927	7.2
New Jersey . . . . .	812	7.1	786	7.0
Pennsylvania . . . . .	1,041	6.9	1,144	7.6
East North Central . . . . .	4,764	7.7	5,221	8.3
Ohio . . . . .	1,130	7.5	1,290	8.3
Indiana . . . . .	593	7.2	711	8.0
Illinois . . . . .	1,491	8.2	1,592	8.6
Michigan . . . . .	1,072	8.0	1,127	8.4
Wisconsin . . . . .	478	7.2	501	7.4
West North Central . . . . .	1,843	7.3	1,782	7.0
Minnesota . . . . .	419	6.6	385	6.1
Iowa . . . . .	215	6.0	212	5.9
Missouri . . . . .	600	8.2	577	7.8
North Dakota . . . . .	53	6.3	40	4.7
South Dakota . . . . .	60	5.8	74	7.3
Nebraska . . . . .	198	8.7	174	7.5
Kansas . . . . .	298	7.8	320	8.3
South Atlantic . . . . .	5,284	8.0	5,600	8.6
Delaware . . . . .	74	7.4	74	7.2
Maryland . . . . .	583	8.6	606	8.4
District of Columbia . . . . .	114	13.9	154	17.7
Virginia . . . . .	640	7.1	666	8.0
West Virginia . . . . .	145	7.1	157	7.7
North Carolina . . . . .	992	9.4	957	9.1
South Carolina . . . . .	385	7.5	473	9.4
Georgia . . . . .	963	8.3	1,084	9.6
Florida . . . . .	1,388	7.3	1,429	7.6
East South Central . . . . .	2,113	9.2	2,068	9.3
Kentucky . . . . .	431	8.3	396	7.6
Tennessee . . . . .	656	8.7	640	9.0
Alabama . . . . .	589	9.7	630	10.4
Mississippi . . . . .	437	10.7	402	10.9
West South Central . . . . .	3,159	6.8	3,309	7.4
Arkansas . . . . .	302	8.5	275	7.9
Louisiana . . . . .	587	9.1	597	9.0
Oklahoma . . . . .	389	8.6	418	9.2
Texas <sup>1</sup> . . . . .	1,881	5.9	2,019	6.7
Mountain . . . . .	1,812	6.9	1,697	7.1
Montana . . . . .	84	8.0	82	7.3
Idaho . . . . .	133	7.4	118	6.4
Wyoming . . . . .	40	6.4	47	7.6
Colorado . . . . .	383	7.6	350	7.2
New Mexico . . . . .	169	6.3	179	6.6
Arizona . . . . .	644	7.6	549	8.1
Utah . . . . .	229	5.3	230	5.9
Nevada . . . . .	130	5.2	142	6.8
Pacific . . . . .	3,956	5.8	4,206	6.0
Washington . . . . .	421	5.4	350	4.3
Oregon . . . . .	250	5.7	252	5.8
California <sup>1</sup> . . . . .	3,128	5.9	3,417	6.2
Alaska . . . . .	69	7.0	68	6.8
Hawaii . . . . .	88	5.0	119	6.4
Puerto Rico <sup>2</sup> . . . . .	563	8.8	653	10.7

<sup>1</sup>Figures include adjustments for varying lengths of reporting periods; see [Technical notes](#).

<sup>2</sup>Data for Puerto Rico are not included in U.S. total figures.

NOTES: Figures include all revisions received from the States. Figures for the current year reflect revisions received for previous months, and figures for earlier years may differ from those previously published.

**Table 5. Provisional number of deaths and death rates, by age, race, and sex, and age-adjusted death rates by race and sex: United States, March 1996 and 1997, cumulative figures 1996 and 1997, and 12 months ending with March 1996 and 1997**

[Data are provisional, estimated from a 10-percent sample of deaths. Age-specific rates on an annual basis per 100,000 population in specified group; age-adjusted rates per 100,000 U.S. standard population; see [Technical notes](#). Because of rounding of estimates, figures may not add to totals. For method of computation and information on standard errors of the estimates, see [Technical notes](#)]

Age, race, and sex	March				January–March				12 months ending with March							
	1997		1996		1997		1996		1997		1996					
	Number	Rate	Number	Rate	Number	Rate	Number	Rate	Number	Rate	Number	Rate				
<b>All races, both sexes<sup>1</sup></b>																
All ages	197,000	871.0	206,000	920.2	606,000	922.4	619,000	942.2	2,299,000	864.7	2,306,000	875.3				
Under 1 year	} 3,480	70.9	3,920	79.9	6,600	<sup>2</sup> 719.1	7,100	<sup>2</sup> 739.0	27,600	<sup>2</sup> 722.7	28,600	<sup>2</sup> 744.3				
1–4 years					1,270	33.5	1,530	39.4	5,590	36.0	6,390	40.7				
5–14 years					1,920	20.1	2,140	22.5	8,570	22.1	8,390	21.9				
15–24 years					2,470	79.9	2,860	94.1	7,870	87.8	8,010	89.8	33,500	93.0	34,470	95.9
25–34 years					3,930	116.0	4,930	143.6	11,510	116.8	14,140	140.1	49,600	123.3	57,450	141.2
35–44 years	7,340	197.1	8,360	229.3	22,490	208.2	25,670	240.2	93,240	214.6	102,610	240.0				
45–54 years	12,840	455.9	12,420	458.8	36,500	447.2	36,390	458.9	142,920	437.2	142,850	453.7				
55–64 years	19,850	1,076.3	20,540	1,141.1	59,360	1,113.4	61,310	1,161.0	232,480	1,085.0	234,420	1,106.6				
65–74 years	38,480	2,442.7	42,770	2,698.0	119,040	2,600.8	127,100	2,729.0	469,060	2,515.6	475,140	2,532.9				
75–84 years	58,050	5,881.5	59,160	6,169.7	176,950	6,184.2	178,830	6,361.7	656,860	5,704.4	653,000	5,817.4				
85 years and over	50,820	15,639.4	50,930	16,273.4	162,580	17,251.8	156,430	17,048.2	578,230	15,358.0	559,870	15,284.5				
Not stated	90	...	140	...	290	...	270	...	980	...	1,000	...				
Age-adjusted rate <sup>3</sup>	...	481.4	...	519.4	...	503.3	...	526.9	...	485.6	...	499.5				
<b>All races, male<sup>1</sup></b>																
All ages	97,800	881.7	104,760	957.9	299,860	931.8	311,890	972.2	1,153,140	887.9	1,170,620	910.0				
Under 1 year	} 1,850	73.6	2,190	87.2	3,790	<sup>2</sup> 803.8	3,880	<sup>2</sup> 791.0	15,400	<sup>2</sup> 786.9	15,930	<sup>2</sup> 809.5				
1–4 years					670	34.5	810	40.7	3,100	39.0	3,560	44.3				
5–14 years					1,110	22.5	1,320	27.0	4,940	24.9	5,160	26.4				
15–24 years					1,750	110.1	2,210	142.4	5,640	122.3	6,100	133.8	24,880	135.3	26,300	143.4
25–34 years					2,750	162.2	3,580	208.6	7,990	162.1	10,110	200.4	34,920	173.8	41,550	204.4
35–44 years	4,850	261.9	5,690	314.5	15,310	285.2	17,370	327.6	63,260	293.4	70,410	332.0				
45–54 years	8,110	588.6	7,990	604.2	22,610	566.4	23,310	601.4	89,600	561.0	90,850	590.6				
55–64 years	12,010	1,367.0	12,390	1,447.0	35,920	1,414.1	36,710	1,461.4	140,480	1,377.5	140,540	1,395.6				
65–74 years	21,910	3,114.1	24,550	3,477.5	67,770	3,315.5	72,300	3,485.6	264,270	3,177.8	271,490	3,254.9				
75–84 years	27,970	7,182.6	29,310	7,816.7	85,380	7,568.3	88,400	8,046.7	320,300	7,075.3	320,940	7,349.2				
85 years and over	16,550	17,763.2	16,700	18,976.7	53,450	19,797.6	51,410	19,933.7	191,350	17,967.1	183,210	17,891.6				
Not stated	60	...	140	...	220	...	200	...	650	...	690	...				
Age-adjusted rate <sup>3</sup>	...	603.9	...	667.8	...	633.2	...	673.2	...	615.2	...	641.2				
<b>All races, female<sup>1</sup></b>																
All ages	99,550	860.6	101,270	884.2	306,560	913.4	307,010	913.7	1,145,530	842.5	1,133,550	840.8				
Under 1 year	} 1,630	68.1	1,730	72.3	2,840	<sup>2</sup> 628.3	3,200	<sup>2</sup> 686.4	12,230	<sup>2</sup> 655.4	12,640	<sup>2</sup> 673.4				
1–4 years					600	32.4	730	37.9	2,480	32.7	2,830	36.9				
5–14 years					810	17.4	830	17.6	3,630	19.2	3,230	17.3				
15–24 years					720	47.9	650	43.7	2,230	51.2	1,920	43.9	8,620	48.9	8,170	46.4
25–34 years					1,170	69.1	1,350	78.6	3,520	71.2	4,030	79.9	14,690	73.0	15,910	78.2
35–44 years	2,490	133.0	2,670	145.3	7,180	132.2	8,300	154.1	29,980	137.0	32,190	149.4				
45–54 years	4,730	328.9	4,430	319.9	13,890	333.0	13,080	322.5	53,330	319.0	52,010	323.0				
55–64 years	7,830	810.8	8,140	862.5	23,450	839.7	24,600	888.8	92,000	819.4	93,880	844.9				
65–74 years	16,570	1,900.6	18,220	2,072.2	51,270	2,024.1	54,800	2,121.2	204,800	1,982.8	203,660	1,954.9				
75–84 years	30,090	5,035.3	29,850	5,112.0	91,570	5,284.2	90,430	5,280.9	336,560	4,816.3	332,060	4,841.2				
85 years and over	34,270	14,791.1	34,240	15,220.4	109,130	16,231.5	105,030	15,923.4	386,880	14,328.9	376,660	14,278.2				
Not stated	40	...	...	...	80	...	70	...	330	...	310	...				
Age-adjusted rate <sup>3</sup>	...	378.8	...	395.8	...	395.0	...	405.9	...	377.6	...	381.5				
<b>White</b>																
All ages	170,370	908.8	177,480	956.3	526,330	967.5	533,930	980.5	1,979,850	899.6	1,981,220	906.6				
Under 1 year	} 2,280	58.7	2,710	69.8	4,330	<sup>2</sup> 592.5	4,570	<sup>2</sup> 612.3	17,860	<sup>2</sup> 599.7	19,060	<sup>2</sup> 633.9				
1–4 years					970	31.9	1,060	34.6	3,850	31.5	4,460	36.0				
5–14 years					1,480	19.8	1,550	20.5	6,260	20.4	6,220	20.5				
15–24 years					1,710	69.5	2,090	86.3	5,630	78.9	5,620	79.0	23,660	82.6	24,560	85.7
25–34 years					2,770	100.9	3,620	129.4	8,350	104.4	9,980	121.3	34,940	106.9	39,920	120.2
35–44 years	5,360	173.4	5,880	193.7	16,420	183.1	18,340	206.1	67,900	187.9	73,380	206.2				
45–54 years	9,960	415.6	9,350	404.5	28,570	411.2	27,630	408.1	109,620	393.3	109,470	406.9				
55–64 years	16,010	1,007.5	16,820	1,082.5	47,850	1,041.6	49,860	1,093.7	188,350	1,019.2	190,670	1,042.3				
65–74 years	33,120	2,381.9	37,150	2,645.6	103,010	2,549.0	110,450	2,676.8	405,730	2,460.9	411,470	2,474.4				
75–84 years	52,450	5,872.0	52,740	6,065.4	159,800	6,170.5	160,650	6,302.5	589,960	5,651.0	586,480	5,762.8				
85 years and over	46,640	15,857.6	47,040	16,519.2	149,730	17,552.2	144,040	17,251.0	531,010	15,490.4	514,800	15,450.2				
Not stated	70	...	80	...	190	...	170	...	710	...	750	...				
Age-adjusted rate <sup>3</sup>	...	458.0	...	493.7	...	482.2	...	500.2	...	461.2	...	473.3				

See footnotes at end of table.

**Table 5. Provisional number of deaths and death rates, by age, race, and sex, and age-adjusted death rates by race and sex: United States, March 1996 and 1997, cumulative figures 1996 and 1997, and 12 months ending with March 1996 and 1997—Con.**

[Data are provisional, estimated from a 10-percent sample of deaths. Age-specific rates on an annual basis per 100,000 population in specified group; age-adjusted rates per 100,000 U.S. standard population; see [Technical notes](#). Because of rounding of estimates, figures may not add to totals. For method of computation and information on standard errors of the estimates, see [Technical notes](#)]

Age, race, and sex	March				January–March				12 months ending with March			
	1997		1996		1997		1996		1997		1996	
	Number	Rate	Number	Rate	Number	Rate	Number	Rate	Number	Rate	Number	Rate
<b>White male</b>												
All ages . . . . .	83,290	903.1	88,990	977.0	257,370	961.8	265,550	993.7	983,770	910.6	995,560	928.7
Under 1 year . . . . .	} 1,250	62.7	1,470	73.8	2,490	<sup>2</sup> 664.8	2,470	<sup>2</sup> 643.3	10,030	<sup>2</sup> 656.0	10,720	<sup>2</sup> 695.2
1–4 years . . . . .					510	32.4	570	36.9	2,230	35.6	2,590	40.8
5–14 years . . . . .					910	23.3	940	24.2	3,650	23.2	3,780	24.3
15–24 years . . . . .					1,170	91.9	1,600	128.7	3,940	106.5	4,170	114.0
25–34 years . . . . .	1,930	139.0	2,700	191.2	5,800	143.9	7,280	175.5	24,930	151.1	29,490	175.9
35–44 years . . . . .	3,530	227.2	4,040	265.4	11,200	248.2	12,500	280.1	46,610	257.2	51,000	285.8
45–54 years . . . . .	6,250	527.1	6,050	530.0	17,750	516.3	17,780	531.6	69,230	502.8	70,130	527.8
55–64 years . . . . .	9,890	1,291.7	10,180	1,362.1	29,540	1,334.8	29,910	1,364.5	114,980	1,292.6	115,530	1,313.4
65–74 years . . . . .	18,890	3,017.8	21,260	3,374.6	58,920	3,239.5	63,020	3,404.0	230,190	3,106.5	236,370	3,173.2
75–84 years . . . . .	25,400	7,180.4	26,180	7,671.7	77,390	7,549.4	79,520	7,953.3	289,530	7,025.7	289,900	7,296.8
85 years and over . . . . .	14,930	17,864.7	15,430	19,400.8	48,770	20,143.2	47,240	20,256.4	174,650	18,117.2	167,090	18,063.8
Not stated . . . . .	50	...	80	...	160	...	140	...	490	...	550	...
Age-adjusted rate <sup>3</sup> . . . . .	...	571.7	...	630.7	...	604.8	...	635.3	...	583.1	...	606.1
<b>White female</b>												
All ages . . . . .	87,080	914.3	88,490	936.3	268,960	973.1	268,380	967.8	996,080	889.0	985,670	885.5
Under 1 year . . . . .	} 1,030	54.4	1,240	65.6	1,840	<sup>2</sup> 516.5	2,100	<sup>2</sup> 579.6	7,830	<sup>2</sup> 540.4	8,340	<sup>2</sup> 569.3
1–4 years . . . . .					460	31.4	490	33.5	1,620	27.2	1,860	30.8
5–14 years . . . . .					580	15.5	610	16.8	2,610	17.5	2,430	16.5
15–24 years . . . . .					540	45.4	490	41.5	1,700	49.6	1,450	41.9
25–34 years . . . . .	850	62.6	920	66.4	2,540	64.5	2,690	66.1	10,020	61.9	10,440	63.5
35–44 years . . . . .	1,830	119.0	1,850	122.3	5,230	117.0	5,850	131.9	21,280	118.2	22,370	126.1
45–54 years . . . . .	3,710	306.4	3,300	282.1	10,820	308.2	9,850	287.1	40,390	286.4	39,340	288.9
55–64 years . . . . .	6,120	743.2	6,650	824.6	18,310	769.4	19,950	842.8	73,370	765.5	75,140	791.2
65–74 years . . . . .	14,230	1,861.2	15,880	2,051.0	44,090	1,983.9	47,430	2,084.6	175,540	1,933.9	175,100	1,907.4
75–84 years . . . . .	27,050	5,014.0	26,560	5,027.7	82,410	5,267.0	81,130	5,237.3	300,430	4,754.4	296,580	4,780.5
85 years and over . . . . .	31,710	15,060.9	31,610	15,402.5	100,960	16,523.8	96,800	16,086.3	356,360	14,462.7	347,710	14,445.8
Not stated . . . . .	20	...	...	...	30	...	30	...	220	...	200	...
Age-adjusted rate <sup>3</sup> . . . . .	...	362.4	...	379.5	...	379.4	...	388.2	...	359.0	...	362.0
<b>Black</b>												
All ages . . . . .	22,970	800.4	24,960	880.8	69,530	835.2	75,280	905.8	278,500	825.3	285,300	857.2
Under 1 year . . . . .	} 1,110	145.9	1,000	130.4	2,160	<sup>2</sup> 1,555.2	2,280	<sup>2</sup> 1,457.0	8,890	<sup>2</sup> 1,420.1	8,650	<sup>2</sup> 1,381.8
1–4 years . . . . .					280	48.3	390	65.3	1,520	61.7	1,640	66.1
5–14 years . . . . .					390	25.5	500	34.4	1,850	30.7	1,800	30.4
15–24 years . . . . .					650	138.4	700	151.1	1,850	136.5	2,100	155.1
25–34 years . . . . .	1,040	227.2	1,170	255.1	2,740	206.0	3,730	276.5	12,940	239.5	15,820	292.4
35–44 years . . . . .	1,780	387.9	2,270	508.6	5,510	414.2	6,760	516.8	22,870	428.2	26,750	512.1
45–54 years . . . . .	2,530	845.1	2,700	948.2	6,970	806.0	7,780	933.8	29,200	844.4	29,860	906.8
55–64 years . . . . .	3,440	1,846.9	3,270	1,799.0	10,300	1,914.9	10,210	1,914.7	39,220	1,812.4	38,660	1,809.9
65–74 years . . . . .	4,420	3,169.4	4,930	3,579.7	13,760	3,405.3	14,600	3,611.4	55,240	3,378.6	56,020	3,458.0
75–84 years . . . . .	4,580	6,285.1	5,460	7,692.5	14,490	6,855.6	15,760	7,569.9	57,670	6,792.7	57,710	6,928.0
85 years and over . . . . .	3,410	13,844.8	3,410	14,430.1	10,970	15,327.2	11,070	15,933.1	40,460	14,196.5	39,580	14,186.4
Not stated . . . . .	30	...	60	...	100	...	100	...	260	...	230	...
Age-adjusted rate <sup>3</sup> . . . . .	...	699.8	...	772.3	...	721.9	...	791.2	...	722.6	...	756.7
<b>Black male</b>												
All ages . . . . .	12,280	901.2	13,830	1,028.6	36,580	925.5	40,990	1,039.6	146,860	917.1	153,850	974.5
Under 1 year . . . . .	} 590	152.8	570	146.5	1,230	<sup>2</sup> 1,734.3	1,250	<sup>2</sup> 1,584.5	4,870	<sup>2</sup> 1,536.3	4,680	<sup>2</sup> 1,471.7
1–4 years . . . . .					160	54.5	200	64.4	800	64.2	840	66.7
5–14 years . . . . .					200	26.4	300	41.2	1,050	34.3	1,160	38.7
15–24 years . . . . .					500	212.1	570	246.0	1,440	212.1	1,760	258.6
25–34 years . . . . .	730	336.3	790	363.9	1,900	301.2	2,530	397.2	8,850	346.0	10,880	425.2
35–44 years . . . . .	1,160	540.0	1,480	710.0	3,720	599.1	4,470	732.1	14,980	600.2	17,750	728.1
45–54 years . . . . .	1,630	1,201.7	1,750	1,355.7	4,290	1,093.1	4,990	1,321.4	18,100	1,155.1	18,730	1,254.5
55–64 years . . . . .	1,910	2,362.3	1,950	2,467.6	5,730	2,452.2	6,060	2,614.2	22,620	2,403.8	22,100	2,381.5
65–74 years . . . . .	2,500	4,284.6	2,920	5,084.8	7,580	4,489.4	8,120	4,816.9	29,610	4,328.9	30,590	4,531.9
75–84 years . . . . .	2,000	7,452.0	2,660	10,229.7	6,510	8,373.3	7,640	10,020.4	25,870	8,291.7	26,650	8,795.4
85 years and over . . . . .	1,260	17,453.5	1,080	15,938.7	3,780	17,987.6	3,620	18,041.8	13,420	16,365.9	13,470	16,629.6
Not stated . . . . .	10	...	60	...	50	...	60	...	150	...	130	...
Age-adjusted rate <sup>3</sup> . . . . .	...	921.8	...	1,062.5	...	943.2	...	1,071.0	...	944.0	...	1,006.2

See footnotes at end of table.

**Table 5. Provisional number of deaths and death rates, by age, race, and sex, and age-adjusted death rates by race and sex: United States, March 1996 and 1997, cumulative figures 1996 and 1997, and 12 months ending with March 1996 and 1997—Con.**

[Data are provisional, estimated from a 10-percent sample of deaths. Age-specific rates on an annual basis per 100,000 population in specified group; age-adjusted rates per 100,000 U.S. standard population; see [Technical notes](#). Because of rounding of estimates, figures may not add to totals. For method of computation and information on standard errors of the estimates, see [Technical notes](#)]

Age, race, and sex	March				January–March				12 months ending with March							
	1997		1996		1997		1996		1997		1996					
	Number	Rate	Number	Rate	Number	Rate	Number	Rate	Number	Rate	Number	Rate				
Black female																
All ages . . . . .	10,690	709.2	11,130	747.4	32,950	753.4	34,280	785.0	131,640	742.4	131,450	751.4				
Under 1 year . . . . .	} 520	138.7	420	111.1	930	<sup>2</sup> 1,342.1	1,030	<sup>2</sup> 1,339.3	4,020	<sup>2</sup> 1,301.0	3,970	<sup>2</sup> 1,289.0				
1–4 years . . . . .					120	42.0	200	66.2	730	60.1	800	65.4				
5–14 years . . . . .					190	25.9	200	27.4	800	26.9	650	22.3				
15–24 years . . . . .					150	64.1	130	56.2	420	60.4	340	51.5	1,830	66.7	1,710	62.6
25–34 years . . . . .					310	128.8	380	157.4	840	120.1	1,200	168.0	4,090	143.8	4,940	173.3
35–44 years . . . . .	620	254.0	790	332.0	1,790	254.3	2,290	328.3	7,890	277.3	9,000	323.0				
45–54 years . . . . .	890	543.5	950	610.2	2,690	566.0	2,790	612.5	11,100	587.0	11,130	618.3				
55–64 years . . . . .	1,530	1,451.6	1,320	1,284.8	4,580	1,502.9	4,150	1,376.8	16,600	1,357.3	16,560	1,370.9				
65–74 years . . . . .	1,920	2,367.2	2,010	2,503.3	6,180	2,626.3	6,480	2,745.0	25,630	2,695.1	25,430	2,691.0				
75–84 years . . . . .	2,580	5,604.7	2,800	6,225.6	7,980	5,971.3	8,120	6,153.9	31,800	5,921.8	31,060	5,860.4				
85 years and over . . . . .	2,150	12,348.5	2,330	13,823.6	7,190	14,224.1	7,450	15,057.1	27,050	13,325.1	26,110	13,186.9				
Not stated . . . . .	20	...	—	...	50	...	40	...	110	...	100	...				
Age-adjusted rate <sup>3</sup> . . . . .	...	528.2	...	550.2	...	550.8	...	575.6	...	550.5	...	563.4				

... Category not applicable.

— Quantity zero.

<sup>1</sup>Includes races other than white and black.

<sup>2</sup>Death rates under 1 year (based on population estimates) differ from infant mortality rates (based on live births); see [table 9](#) for infant mortality rates.

<sup>3</sup>For method of computation, see [Technical notes](#).

NOTES: Figures include all revisions received from the States. Cumulative and 12-month figures for the current year reflect revisions received for previous months, and figures for earlier years may differ from those previously published. Data include adjustments for Utah, which is not included in the sample for March 1997.

**Table 6. Provisional number of deaths and death rates for 72 selected causes, Human immunodeficiency virus infection, and Alzheimer's disease: United States, March 1996 and 1997, cumulative figures 1996 and 1997, and 12 months ending with March 1996 and 1997**

[Data are provisional, estimated from a 10-percent sample of deaths. Rates on an annual basis per 100,000 estimated population. Because of rounding of estimates, figures may not add to totals. For method of computation and information on standard errors of the estimates, see [Technical notes](#). For explanation of asterisk preceding cause-of-death categories, see [Technical notes](#)]

Cause of death (Based on the <i>Ninth Revision, International Classification of Diseases, 1975</i> )	March		January–March		12 months ending with March		1996		1997		1996	
	1997		1996		1997		1996		1997		1996	
	Number	Rate	Number	Rate	Number	Rate	Number	Rate	Number	Rate	Number	Rate
All causes . . . . .	197,000	871.0	206,000	920.2	606,000	922.4	619,000	942.2	2,299,000	864.7	2,306,000	875.3
Shigellosis and amebiasis . . . . .	—	*	—	*	—	*	—	*	—	*	—	*
Certain other intestinal infections . . . . .	60	*	120	0.5	220	0.3	300	0.5	740	0.3	780	0.3
Tuberculosis . . . . .	100	*	100	*	280	0.4	310	0.5	980	0.4	1,190	0.5
Tuberculosis of respiratory system . . . . .	80	*	70	*	230	0.3	270	0.4	770	0.3	960	0.4
Other tuberculosis . . . . .	20	*	30	*	50	*	50	*	210	0.1	240	0.1
Whooping cough . . . . .	—	*	10	*	10	*	10	*	10	*	20	*
Streptococcal sore throat, scarlatina, and erysipelas . . . . .	—	*	—	*	—	*	—	*	—	*	—	*
Meningococcal infection . . . . .	80	*	30	*	140	0.2	100	*	310	0.1	310	0.1
Septicemia . . . . .	1,950	8.6	1,670	7.4	5,880	8.9	5,660	8.6	21,890	8.2	20,840	7.9
Acute poliomyelitis . . . . .	—	*	—	*	—	*	—	*	—	*	—	*
Measles . . . . .	—	*	—	*	—	*	—	*	—	*	—	*
Viral hepatitis . . . . .	390	1.7	290	1.3	980	1.5	880	1.3	3,920	1.5	3,520	1.3
Syphilis . . . . .	—	*	—	*	—	*	—	*	30	*	60	*
All other infectious and parasitic diseases <sup>1</sup> . . . . .	2,090	9.2	3,810	17.0	6,410	9.8	11,160	17.0	33,190	12.5	47,380	18.0
Malignant neoplasms, including neoplasms of lymphatic and hematopoietic tissues . . . . .	44,720	197.4	46,630	208.3	131,580	200.1	138,260	210.5	535,660	201.5	538,370	204.3
Malignant neoplasms of lip, oral cavity, and pharynx . . . . .	610	2.7	700	3.1	1,980	3.0	1,990	3.0	7,840	2.9	7,710	2.9
Malignant neoplasms of digestive organs and peritoneum . . . . .	10,940	48.3	10,760	48.1	31,310	47.6	32,140	48.9	126,020	47.4	125,900	47.8
Malignant neoplasms of respiratory and intrathoracic organs . . . . .	12,850	56.7	13,870	61.9	39,040	59.4	40,800	62.1	157,300	59.2	156,230	59.3
Malignant neoplasm of breast . . . . .	3,450	15.2	3,650	16.3	9,970	15.2	11,110	16.9	42,400	15.9	43,680	16.6
Malignant neoplasms of genital organs . . . . .	4,660	20.6	5,230	23.4	14,430	21.9	14,970	22.8	59,700	22.5	60,200	22.9
Malignant neoplasms of urinary organs . . . . .	2,250	9.9	1,940	8.7	5,790	8.8	5,890	9.0	22,930	8.6	22,960	8.7
Malignant neoplasms of all other and unspecified sites . . . . .	5,100	22.5	5,830	26.0	15,370	23.4	16,970	25.8	64,660	24.3	66,320	25.2
Leukemia . . . . .	1,750	7.7	1,730	7.7	4,910	7.5	5,420	8.3	19,830	7.5	20,250	7.7
Other malignant neoplasms of lymphatic and hematopoietic tissues . . . . .	3,110	13.7	2,920	13.0	8,760	13.3	8,980	13.7	34,990	13.2	35,130	13.3
Benign neoplasms, carcinoma in situ, and neoplasms of uncertain behavior and of unspecified nature . . . . .	680	3.0	650	2.9	1,910	2.9	2,020	3.1	7,540	2.8	7,890	3.0
Diabetes mellitus . . . . .	5,190	22.9	5,640	25.2	16,100	24.5	16,070	24.5	61,500	23.1	58,600	22.2
Nutritional deficiencies . . . . .	290	1.3	350	1.6	920	1.4	1,140	1.7	3,580	1.3	4,010	1.5
Anemias . . . . .	410	1.8	380	1.7	1,270	1.9	960	1.5	4,280	1.6	4,030	1.5
Meningitis . . . . .	40	*	50	*	130	0.2	190	0.3	530	0.2	690	0.3
Major cardiovascular diseases . . . . .	80,960	357.3	83,830	374.4	250,730	381.4	255,380	388.8	936,990	352.5	938,690	356.3
Diseases of heart . . . . .	61,900	273.2	64,910	289.9	192,140	292.3	198,270	301.8	723,010	272.0	728,550	276.5
Rheumatic fever and rheumatic heart disease . . . . .	390	1.7	640	2.9	1,140	1.7	1,440	2.2	4,560	1.7	4,930	1.9
Hypertensive heart disease . . . . .	2,330	10.3	2,140	9.6	6,940	10.5	6,890	10.5	26,060	9.8	24,930	9.5
Hypertensive heart and renal disease . . . . .	130	0.6	110	0.5	620	0.9	600	0.9	2,230	0.8	2,170	0.8
Ischemic heart disease . . . . .	39,840	175.8	41,830	186.8	124,470	189.3	128,500	195.6	468,980	176.4	474,640	180.2
Acute myocardial infarction . . . . .	17,740	78.3	18,590	83.0	55,780	84.8	58,180	88.6	211,480	79.6	214,920	81.6
Other acute and subacute forms of ischemic heart disease . . . . .	260	1.1	220	1.0	760	1.2	660	1.0	2,800	1.1	2,500	0.9
Angina pectoris . . . . .	40	*	60	*	170	0.3	210	0.3	650	0.2	720	0.3
Old myocardial infarction and other forms of chronic ischemic heart disease . . . . .	21,800	96.2	22,960	102.5	67,760	103.1	69,450	105.7	254,060	95.6	256,490	97.4
Other diseases of endocardium . . . . .	1,470	6.5	1,630	7.3	4,360	6.6	4,530	6.9	16,310	6.1	15,680	6.0
All other forms of heart disease . . . . .	17,740	78.3	18,560	82.9	54,610	83.1	56,310	85.7	204,870	77.1	206,200	78.3
Hypertension with or without renal disease . . . . .	1,160	5.1	1,080	4.8	3,570	5.4	3,310	5.0	12,450	4.7	12,430	4.7
Cerebrovascular diseases . . . . .	13,930	61.5	14,140	63.1	43,380	66.0	42,790	65.1	159,140	59.9	156,080	59.2
Intracerebral and other intracranial hemorrhage . . . . .	2,250	9.9	2,000	8.9	6,730	10.2	6,120	9.3	24,120	9.1	21,760	8.3
Cerebral thrombosis and unspecified occlusion of cerebral arteries . . . . .	1,100	4.9	1,180	5.3	3,320	5.0	3,370	5.1	12,400	4.7	12,900	4.9
Cerebral embolism . . . . .	20	*	60	*	110	0.2	140	0.2	780	0.3	650	0.2
All other and late effects of cerebrovascular diseases . . . . .	10,560	46.6	10,900	48.7	33,210	50.5	33,160	50.5	121,840	45.8	120,770	45.8

See footnotes at end of table.

**Table 6. Provisional number of deaths and death rates for 72 selected causes, Human immunodeficiency virus infection, and Alzheimer's disease: United States, March 1996 and 1997, cumulative figures 1996 and 1997, and 12 months ending with March 1996 and 1997—Con.**

[Data are provisional, estimated from a 10-percent sample of deaths. Rates on an annual basis per 100,000 estimated population. Because of rounding of estimates, figures may not add to totals. For method of computation and information on standard errors of the estimates, see [Technical notes](#). For explanation of asterisk preceding cause-of-death categories, see [Technical notes](#)]

Cause of death (Based on the <i>Ninth Revision, International Classification of Diseases, 1975</i> )	March		January–March				12 months ending with March						
	1997		1996		1997		1996		1997		1996		
	Number	Rate	Number	Rate	Number	Rate	Number	Rate	Number	Rate	Number	Rate	
Cerebrovascular diseases—Con.													
Atherosclerosis . . . . .	.440	1,470	6.5	1,240	5.5	4,450	6.8	4,130	6.3	15,900	6.0	15,840	6.0
Other diseases of arteries, arterioles, and capillaries . . . . .	.441–448	2,500	11.0	2,470	11.0	7,200	10.9	6,880	10.5	26,490	10.0	25,780	9.8
Acute bronchitis and bronchiolitis . . . . .	.466	60	*	60	*	240	0.4	170	0.2	490	0.2	490	0.2
Pneumonia and influenza . . . . .	.480–487	8,180	36.1	8,060	36.0	27,940	42.5	25,550	38.9	83,940	31.6	79,490	30.2
Pneumonia . . . . .	.480–486	8,130	35.9	7,970	35.6	27,260	41.5	25,140	38.3	83,010	31.2	78,940	30.0
Influenza . . . . .	.487	60	*	90	*	680	1.0	410	0.6	930	0.3	550	0.2
Chronic obstructive pulmonary diseases and allied conditions . . . . .	.490–496	9,800	43.2	10,430	46.6	31,160	47.4	30,570	46.5	106,060	39.9	102,580	38.9
Bronchitis, chronic and unspecified . . . . .	.490–491	280	1.2	340	1.5	1,040	1.6	1,140	1.7	2,850	1.1	3,150	1.2
Emphysema . . . . .	.492	1,630	7.2	1,730	7.7	5,330	8.1	5,030	7.6	17,090	6.4	16,740	6.4
Asthma . . . . .	.493	490	2.2	550	2.5	1,660	2.5	1,270	1.9	5,550	2.1	5,100	1.9
Other chronic obstructive pulmonary diseases and allied conditions . . . . .	.494–496	7,390	32.6	7,810	34.9	23,130	35.2	23,130	35.2	80,570	30.3	77,600	29.5
Ulcer of stomach and duodenum . . . . .	.531–533	450	2.0	460	2.1	1,350	2.0	1,430	2.2	4,700	1.8	5,830	2.2
Appendicitis . . . . .	.540–543	40	*	80	*	70	*	140	0.2	410	0.2	450	0.2
Hernia of abdominal cavity and intestinal obstruction without mention of hernia . . . . .	.550–553,560	520	2.3	530	2.4	1,350	2.0	1,700	2.6	6,100	2.3	6,010	2.3
Chronic liver disease and cirrhosis . . . . .	.571	2,070	9.1	2,510	11.2	6,350	9.7	6,630	10.1	24,180	9.1	24,920	9.5
Cholelithiasis and other disorders of gallbladder . . . . .	.574–575	230	1.0	240	1.1	650	1.0	690	1.0	2,640	1.0	2,660	1.0
Nephritis and nephrotic syndrome, and nephrosis . . . . .	.580–589	2,210	9.7	2,490	11.1	7,060	10.7	7,340	11.2	26,700	10.0	25,880	9.8
Acute glomerulonephritis and nephrotic syndrome . . . . .	.580–581	30	*	30	*	60	*	60	*	220	0.1	290	0.1
Chronic glomerulonephritis, nephritis and nephropathy, not specified as acute or chronic, and renal sclerosis, unspecified . . . . .	.582–583,587	200	0.9	180	0.8	520	0.8	510	0.8	1,800	0.7	1,470	0.6
Renal failure, disorders resulting from impaired renal function, and small kidney of unknown cause . . . . .	.584–586,588–589	1,980	8.7	2,290	10.2	6,490	9.9	6,770	10.3	24,680	9.3	24,120	9.2
Infections of kidney . . . . .	.590	30	*	90	*	180	0.3	260	0.4	830	0.3	810	0.3
Hyperplasia of prostate . . . . .	.600	30	*	40	*	160	0.2	140	0.2	430	0.2	450	0.2
Complications of pregnancy, childbirth, and the puerperium . . . . .	.630–676	20	*	30	*	50	*	60	*	270	0.1	300	0.1
Pregnancy with abortive outcome . . . . .	.630–638	–	*	10	*	20	*	10	*	30	*	30	*
Other complications of pregnancy, childbirth, and the puerperium . . . . .	.640–676	20	*	20	*	30	*	50	*	240	0.1	270	0.1
Congenital anomalies . . . . .	.740–759	960	4.2	1,050	4.7	2,880	4.4	2,810	4.3	11,540	4.3	11,590	4.4
Certain conditions originating in the perinatal period . . . . .	.760–779	1,120	4.9	1,160	5.2	2,790	4.2	3,130	4.8	12,560	4.7	13,120	5.0
Birth trauma, intrauterine hypoxia, birth asphyxia, and respiratory distress syndrome . . . . .	.767–769	120	0.5	250	1.1	480	0.7	540	0.8	2,090	0.8	2,050	0.8
Other conditions originating in the perinatal period . . . . .	.760–766,770–779	1,010	4.5	910	4.1	2,320	3.5	2,600	4.0	10,470	3.9	11,070	4.2
Symptoms, signs, and ill-defined conditions . . . . .	.780–799	3,760	16.6	3,410	15.2	11,580	17.6	11,120	16.9	42,240	15.9	42,340	16.1
All other diseases . . . . .	Residual	20,590	90.9	19,490	87.0	63,110	96.0	59,540	90.6	222,600	83.7	215,890	81.9
Accidents and adverse effects . . . . .	E800–E949	6,450	28.5	7,610	34.0	20,680	31.5	21,950	33.4	89,480	33.7	90,900	34.5
Motor vehicle accidents . . . . .	E810–E825	2,950	13.0	3,760	16.8	9,680	14.7	10,320	15.7	43,060	16.2	44,450	16.9
All other accidents and adverse effects . . . . .	E800–E807,E826–E949	3,500	15.4	3,850	17.2	10,990	16.7	11,630	17.7	46,430	17.5	46,450	17.6
Suicide . . . . .	E950–E959	2,140	9.4	2,490	11.1	7,060	10.7	6,920	10.5	30,310	11.4	29,290	11.1
Homicide and legal intervention . . . . .	E960–E978	1,590	7.0	1,990	8.9	4,640	7.0	5,690	8.7	19,830	7.5	22,430	8.5
All other external causes . . . . .	E980–E999	180	0.8	240	1.1	530	0.8	620	0.9	2,230	0.8	2,320	0.9
Human immunodeficiency virus infection <sup>2</sup> . . . . .	*042–*044	1,590	7.0	3,370	15.0	4,820	7.3	9,750	14.9	26,310	9.9	41,170	15.6
Alzheimer's disease . . . . .	.331.0	2,030	8.9	1,930	8.6	6,860	10.4	6,130	9.3	22,660	8.5	20,920	7.9

– Quantity zero. \* Figure does not meet standards of reliability or precision; see [Technical notes](#).  
<sup>1</sup>Includes data for deaths due to Human immunodeficiency virus infection (categories \*042–\*044) shown separately below; see [Technical notes](#).  
<sup>2</sup>Included in All other infectious and parasitic diseases shown above.

NOTES: Figures include all revisions received from the States. Cumulative and 12-month figures for the current year reflect revisions received for previous months, and figures for earlier years may differ from those previously published. Data include adjustments for Utah, which is not included in the sample for March for 1997.

**Table 7. Provisional number of deaths and death rates for 16 selected subcategories of Malignant neoplasms, including neoplasms of lymphatic and hematopoietic tissues: United States, March 1996 and 1997, cumulative figures 1996 and 1997, and 12 months ending with March 1996 and 1997**

[Data are provisional, estimated from a 10-percent sample of deaths. Rates on an annual basis per 100,000 estimated population. Because of rounding of estimates, figures may not add to totals. For method of computation and information on standard errors of the estimates, see [Technical notes](#)]

Cause of death (Based on the <i>Ninth Revision, International Classification of Diseases, 1975</i> )	March				January–March				12 months ending with March				
	1997		1996		1997		1996		1997		1996		
	Number	Rate	Number	Rate	Number	Rate	Number	Rate	Number	Rate	Number	Rate	
Malignant neoplasms, including neoplasms of lymphatic and hematopoietic tissues <sup>1</sup> . . . . .	140–208	44,720	197.4	46,630	208.3	131,580	200.1	138,260	210.5	535,660	201.5	538,370	204.3
Malignant neoplasm of esophagus . . . . .	.150	950	4.2	870	3.9	2,990	4.5	2,790	4.2	11,350	4.3	10,330	3.9
Malignant neoplasm of stomach . . . . .	.151	1,150	5.1	1,040	4.6	3,090	4.7	3,230	4.9	13,260	5.0	13,610	5.2
Malignant neoplasms of colon, rectum, rectosigmoid junction, and anus . . . . .	.153,154	4,800	21.2	5,100	22.8	13,850	21.1	14,790	22.5	56,320	21.2	56,250	21.4
Malignant neoplasm of pancreas . . . . .	.157	2,410	10.6	2,480	11.1	6,810	10.3	6,780	10.3	27,630	10.4	27,500	10.4
Malignant neoplasms of trachea, bronchus, and lung . . . . .	.162	12,480	55.1	13,400	59.8	37,900	57.6	39,450	60.1	152,200	57.3	151,120	57.4
Malignant melanoma of skin . . . . .	.172	640	2.8	500	2.2	1,860	2.8	1,360	2.1	7,540	2.8	6,670	2.5
Malignant neoplasm of cervix uteri . . . . .	.180	350	1.5	460	2.1	1,130	1.7	1,080	1.6	4,520	1.7	4,960	1.9
Malignant neoplasms of body of uterus and of uterus, part unspecified . . . . .	.179,182	440	1.9	610	2.7	1,340	2.0	1,450	2.2	5,670	2.1	6,070	2.3
Malignant neoplasm of ovary . . . . .	.183.0	1,210	5.3	1,030	4.6	3,440	5.2	3,350	5.1	13,580	5.1	13,350	5.1
Malignant neoplasm of prostate . . . . .	.185	2,520	11.1	2,980	13.3	8,170	12.4	8,590	13.1	34,060	12.8	33,980	12.9
Malignant neoplasm of bladder . . . . .	.188	1,100	4.9	970	4.3	2,830	4.3	2,990	4.5	11,110	4.2	11,410	4.3
Malignant neoplasms of kidney and other and unspecified urinary organs . . . . .	.189	1,150	5.1	970	4.3	2,960	4.5	2,900	4.4	11,830	4.5	11,550	4.4
Malignant neoplasms of brain and other and unspecified parts of nervous system . . . . .	.191,192	860	3.8	1,140	5.1	2,490	3.8	3,170	4.8	10,910	4.1	11,880	4.5
Hodgkin's disease . . . . .	.201	180	0.8	150	0.7	380	0.6	500	0.8	1,340	0.5	1,670	0.6
Malignant lymphoma other than Hodgkin's disease . . . . .	.200,202	2,090	9.2	1,790	8.0	5,780	8.8	5,760	8.8	23,200	8.7	23,110	8.8
Multiple myeloma and other immunoproliferative neoplasms . . . . .	.203	840	3.7	980	4.4	2,600	4.0	2,710	4.1	10,450	3.9	10,350	3.9

<sup>1</sup>Includes figures for subcategories not shown below.

NOTES: Figures include all revisions received from the States. Cumulative and 12-month figures for the current year reflect revisions received for previous months, and figures for earlier years may differ from those previously published. Data include adjustments for Utah, which is not included in the sample for March 1997.

**Table 8. Provisional number of deaths and death rates for firearm mortality: United States, March 1996 and 1997, cumulative figures 1996 and 1997, and 12 months ending with March 1996 and 1997**

[Data are provisional, estimated from a 10-percent sample of deaths. Rates on an annual basis per 100,000 estimated population. Because of rounding of estimates, figures may not add to totals. For method of computation and information on standard errors of the estimates, see [Technical notes](#)]

Cause of death (Based on the <i>Ninth Revision International Classification of Diseases, 1975</i> )	March				January–March				12 months ending with March				
	1997		1996		1997		1996		1997		1996		
	Number	Rate	Number	Rate	Number	Rate	Number	Rate	Number	Rate	Number	Rate	
Injury by firearms . . . . .	E922,E955.0–E955.4,E965.0–965.4,E970,E985.0–E985.4	2,560	11.3	3,230	14.4	8,030	12.2	8,980	13.7	33,520	12.6	35,390	13.4
Accident caused by firearm missile . . . . .	E922	90	*	130	0.6	270	0.4	350	0.5	1,250	0.5	1,330	0.5
Suicide by firearms . . . . .	E955.0–E955.4	1,310	5.8	1,600	7.1	4,270	6.5	4,460	6.8	18,140	6.8	17,760	6.7
Homicide and legal intervention by firearms . . . . .	E965.0–E965.4,E970	1,150	5.1	1,460	6.5	3,450	5.3	4,100	6.2	13,930	5.2	16,080	6.1
Injury by firearms, undetermined whether accidentally or purposely inflicted . . . . .	E985.0–E985.4	20	*	40	*	50	*	60	*	200	0.1	220	0.1

\* Figure does not meet standards of reliability or precision; see [Technical notes](#).

NOTES: Figures include all revisions received from the States. Cumulative and 12-month figures for the current year reflect revisions received for previous months, and figures for earlier years may differ from those previously published. Data include adjustments for Utah, which is not included in the sample for March 1997.

**Table 9. Provisional number of deaths under 1 year and infant mortality rates, by age and for 10 selected causes: United States, March 1996 and 1997, cumulative figures 1996 and 1997, and 12 months ending with March 1996 and 1997**

[Data are provisional, estimated from a 10-percent sample of deaths. Rates on an annual basis per 100,000 live births. Because of rounding of estimates, figures may not add to totals. For method of computation and information on standard errors of the estimates, see [Technical notes](#)]

Age and cause of death (Based on the <i>Ninth Revision International Classification of Diseases, 1975</i> )	March				January–March				12 months ending with March			
	1997		1996		1997		1996		1997		1996	
	Number	Rate	Number	Rate	Number	Rate	Number	Rate	Number	Rate	Number	Rate
Total, under 1 year . . . . .	2,500	781.3	2,600	785.1	6,700	732.2	7,100	751.1	27,700	720.3	28,600	745.0
Under 28 days . . . . .	1,510	483.7	1,620	494.7	3,890	425.7	4,320	457.9	18,050	469.8	18,190	473.6
28 days–11 months . . . . .	950	304.3	950	290.1	2,740	299.9	2,770	293.6	9,580	249.3	10,390	270.5
Certain gastrointestinal diseases . . . . .	10	*	30	*	50	*	50	*	220	5.7	200	5.2
Pneumonia and influenza . . . . .	60	*	30	*	80	*	110	11.7	290	7.5	360	9.4
Congenital anomalies . . . . .	530	169.8	590	180.2	1,550	169.6	1,510	160.0	6,550	170.5	6,090	158.6
Disorders relating to short gestation and unspecified low birthweight . . . . .	320	102.5	330	100.8	760	83.2	820	86.9	3,500	91.1	3,370	87.7
Birth trauma . . . . .	–	*	40	*	10	*	80	*	100	*	240	6.2
Intrauterine hypoxia and birth asphyxia . . . . .	–	*	30	*	130	14.2	130	13.8	520	13.5	480	12.5
Respiratory distress syndrome . . . . .	100	*	160	48.9	300	32.8	300	31.8	1,390	36.2	1,230	32.0
Other conditions originating in the perinatal period . . . . .	680	217.8	570	174.1	1,530	167.4	1,750	185.5	6,890	179.3	7,610	198.1
Sudden infant death syndrome . . . . .	120	38.4	300	91.6	500	54.7	800	84.8	2,300	59.9	2,860	74.5
All other causes . . . . .	640	205.0	480	146.6	1,730	189.3	1,530	162.2	5,860	152.5	6,130	159.6

\* Figure does not meet standards of reliability or precision; see [Technical notes](#).

– Quantity zero.

NOTES: Figures include all revisions received from the States. Cumulative and 12-month figures for the current year reflect revisions received for previous months, and figures for earlier years may differ from those previously published. Data include adjustments for Utah, which is not included in the sample for March 1997.



## Technical notes

### Nature and sources of data

Data in this report are provisional unless otherwise specified and include only events occurring within the United States (50 States and the District of Columbia). Mortality data exclude fetal deaths. Data for the Commonwealth of Puerto Rico are not included in the U.S. totals.

Birth, death, and infant death figures in [tables 2](#) and [4](#) for each State are estimates by State of residence. These estimates are derived by applying adjustment ratios to the actual counts of certificates for all events occurring in the State and received in registration offices during a 1-month period regardless of date of the event. The adjustment ratios for each data year represent the observed relationship between final State occurrence figures and final State residence figures for the three most recent years for which final data were available and are expressed as a single ratio for each State. As in previous years, monthly State marriage and divorce figures represent the actual count of all events occurring in the State (State of occurrence) that were received in the registration offices during the 1-month period. Delay in the receipt of certificates in a registration office may result in a low State figure for a given month followed by a high figure for the month(s) in which the delayed records are received. Data for previous months and cumulative data include revised figures received from the States.

Figures for births, deaths, and infant deaths for California in [tables 2](#) and [4](#) contain adjustments for varying lengths of State reporting periods. Figures for Texas for all events shown in [tables 2–4](#) also are adjusted for varying lengths of State reporting periods. The figures for both States are adjusted by the ratio between the number of days in the data month and the number of days in the State reporting period. The adjusted figures are included in the U.S. totals shown elsewhere in this report.

U.S. totals for births, deaths, and infant deaths are based on the State estimates by State of residence and, therefore, in effect, exclude events to nonresidents of the United States. Events to nonresidents of the United States are included in all

marriage and divorce figures. The effect of excluding events to nonresidents from the U.S. totals is small.

Provisional totals for the United States include estimates for State data shown as not available. Provisional totals for births and marriages for the entire United States include adjustments for observed differences between provisional and final monthly figures.

Divorce figures include reported annulments. The monthly national divorce estimate is obtained by multiplying the total for the reporting areas by the ratio observed between the most recent final annual divorce total for the United States and the provisional total for the reporting areas combined.

*Random variation*—Although the counts in this report are not subject to sampling variability (except the Current Mortality Sample), they may be affected by random variation. When the number of events is small and the probability of such an event is small, considerable caution must be observed in interpreting the data. Such infrequent events may be assumed to follow a Poisson probability distribution. For this distribution a simple approximation may be used to estimate the random variation as follows:

If  $N$  is the number of events in the population and  $R$  is the corresponding rate, the chances are 19 in 20 that

$$1. N - 2\sqrt{N} \text{ and } N + 2\sqrt{N}$$

covers the “true” number of events.

$$2. R - 2 \frac{R}{\sqrt{N}} \text{ and } R + 2 \frac{R}{\sqrt{N}}$$

covers the “true” rate.

If the rate  $R_1$  corresponding to  $N_1$  events is compared with the rate  $R_2$  corresponding to  $N_2$  events, the difference between the two rates may be regarded as statistically significant at the 0.05 level if it exceeds

$$2 \sqrt{\frac{R_1^2}{N_1} + \frac{R_2^2}{N_2}}$$

Additional information on random variation in numbers of events, rates, and ratios may be found in the technical appendixes of *Vital Statistics of the United States, 1992, Volumes I and II*.

### Rates

Rates are on an annual basis and, except for infant mortality rates, are per 1,000 or 100,000 estimated population residing in the United States. The populations used for computing these rates are furnished by the U.S. Bureau of the Census. Rates shown in this report beginning with 1992 were computed using populations based on the 1990 Census enumeration comparable to those used for final data. Monthly rates are based on populations estimated for the specific month. Year-to-date rates are averages of monthly rates that have been weighted by the number of days in the corresponding months. Rates for 12-month periods are the sum of events for the period per population estimated at the midpoint of the period.

Infant mortality rates are deaths under 1 year of age for the specified period (monthly, year-to-date, or 12-month period) per 1,000 or 100,000 live births. Births used for computing monthly and year-to-date infant mortality rates are adjusted for monthly variation in the number of births. Births used to compute 12-month rates do not contain this adjustment. Births used for computing infant mortality rates are not corrected for observed differences between provisional and final monthly figures as described earlier in “[Nature and sources of data.](#)” Because monthly infant mortality rates are based on relatively few events, they are highly variable. Therefore, comparisons of monthly infant mortality rates should be interpreted cautiously; see “[Random variation.](#)”

Age-adjusted death rates are used to compare relative mortality risks across groups and over time. However, they should be viewed as constructs or indexes rather than as direct or actual measures of mortality risk. Statistically, they are weighted averages of the age-specific death rates, where the weights represent the fixed population proportions by age. See chapter 5 of an earlier report (1). The age-adjusted death rates presented in this report were computed by the direct method, that is, by applying age-specific death rates to the U.S. standard million population (2). See also chapter 10 of an earlier report (1). Age groups in [table 5](#) were used to compute the age-adjusted

rates shown in that table. It is important not to compare age-adjusted rates with crude rates.

### Current Mortality Sample

The Current Mortality Sample (CMS) is a 10-percent systematic sample of death certificates drawn each month after the certificates are counted in the State registration offices. Deaths and death rates for the United States by age, race, sex, and cause are estimated based on the sample. Because of the additional time required to select and process the certificates, data based on the CMS are published 1 month after publication of the U.S. and State counts. Complete information concerning the underlying cause of death sometimes is not available when the sample is drawn. As a result estimates based on sample counts for certain causes are biased. Correction for bias is not made in this report.

Estimated numbers of deaths based on the sample were proportionately adjusted to be consistent with estimates based on the count of death certificates received in State registration offices.

*HIV infection*—Beginning with data for 1987, the National Center for Health Statistics introduced categories \*042–\*044 for classifying and coding Human immunodeficiency virus (HIV) infection. The asterisks before the categories indicate that these codes are not part of the

*Ninth Revision, International Classification of Diseases*. Deaths classified to these categories are included in All other infectious and parasitic diseases in the List of 72 Selected Causes of Death and are also shown separately at the bottom of table 6.

*Sampling variability*—Because the estimates of deaths and death rates presented in this report with the exception of total deaths and deaths under 1 year are based on a sample of death certificates, they are subject to sampling variability. The estimated relative standard error in the following table is a measure of the

**Relative standard errors for estimated numbers of deaths from the Current Mortality Sample expressed as a percent of the estimate**

Estimated number of deaths	Relative standard error of estimate (as percent)	
	170,000 estimated deaths each month	2,000,000 estimated deaths each year
10 . . . . .	94.9	94.9
20 . . . . .	67.1	67.1
50 . . . . .	42.4	42.4
100 . . . . .	30.0	30.0
200 . . . . .	21.2	21.2
500 . . . . .	13.4	13.4
1,000 . . . . .	9.5	9.5
2,000 . . . . .	6.7	6.7
5,000 . . . . .	4.2	4.2
10,000 . . . . .	2.9	3.0
20,000 . . . . .	2.0	2.1
50,000 . . . . .	1.1	1.3
100,000 . . . . .	0.6	0.9
200,000 . . . . .	...	0.6
500,000 . . . . .	...	0.4
1,000,000 . . . . .	...	0.2

sampling error of the estimated number of deaths (or of the estimated death rate) expressed as a percent of the estimate. The first column refers to monthly estimates; the second to annual; cumulative year-to-date totals fall between the two.

The chances are about 2 in 3 that the percent difference between an estimate and the result of a complete count is less than the percent shown. The chances are about 19 in 20 that the percent difference is less than twice the percent shown. A figure based on 100 or fewer estimated deaths has a relative standard error of 30 percent or more and is, therefore, considered unreliable. A rate based on 100 or fewer estimated deaths has been replaced by an asterisk.

Unless otherwise specified comparisons made in the text between death rates based on the CMS were statistically significant at the 0.05 level of significance. Lack of comment in the text about any two rates does not mean that the difference was tested and found not to be significant at this level.

### References

1. Feinleib M, Zarate AO, eds. Reconsidering age adjustment procedures: Workshop proceedings. National Center for Health Statistics. Vital Health Stat 4(29). 1992.
2. Grove RD, Hetzel AM. Vital statistics rates in the United States, 1940–1960. Public Health Service. Washington: National Center for Health Statistics. 1968.

---

**Suggested citation**

National Center for Health Statistics. Births, marriages, divorces, and deaths for April 1997. Monthly vital statistics report; vol 46 no 4. Hyattsville, Maryland: National Center for Health Statistics. 1997.

---

**Copyright information**

All material appearing in this report is in the public domain and may be reproduced or copied without permission; citation as to source, however, is appreciated.

---

**National Center for Health Statistics**

Director  
Edward J. Sondik, Ph.D.

Deputy Director  
Jack R. Anderson

**Division of Vital Statistics**

Director  
Mary Anne Freedman

---

**DEPARTMENT OF  
HEALTH & HUMAN SERVICES**

Centers for Disease Control and Prevention  
National Center for Health Statistics  
6525 Belcrest Road  
Hyattsville, Maryland 20782-2003

FIRST CLASS MAIL  
POSTAGE & FEES PAID  
PHS/NCHS  
PERMIT NO. G-281

---

OFFICIAL BUSINESS  
PENALTY FOR PRIVATE USE, \$300

---

To receive this publication regularly, contact the National Center for Health Statistics by calling 301-436-8500  
E-mail: [nchsquery@cdc.gov](mailto:nchsquery@cdc.gov)  
Internet: <http://www.cdc.gov/nchswww/nchshome.htm>

---

DHHS Publication No. (PHS) 98-1120  
8-0110 (11/97)