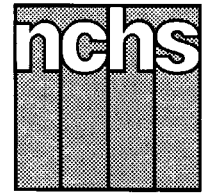


Monthly Vital Statistics Report



Provisional Data From the CENTERS FOR DISEASE CONTROL AND PREVENTION/National Center for Health Statistics

Births, Marriages, Divorces, and Deaths for October 1996

Births

According to provisional reports, an estimated 347,000 births occurred in the United States during October 1996. This was a 6-percent increase from the provisional number of births reported for October 1995 (328,000). The birth rate, 15.4 live births per 1,000 population, was 5 percent higher than the rate of 14.7 for October 1995. The fertility rate, 68.8 live births per 1,000 women 15–44 years, was 6 percent higher than the comparable rate for October 1995 (64.9). The seasonally adjusted fertility rate (69.0) was also 6 percent higher than the comparable rate for October 1995 (65.2).

During the first 10 months of 1996, an estimated 3,302,000 births occurred, a slight rise from the 3,287,000 reported for the first 10 months of 1995. The birth rate for this period remained the same in 1996 (15.0) as it had been in 1995.

An estimated 3,908,000 live births occurred in the 12-month period ending with October 1996, a slight decline from the 3,914,000 births reported for the same period a year earlier. The birth rate of 14.8 was 1 percent lower than the rate of 14.9 for the preceding 12-month period. The fertility rate for the most recent 12-month period was 65.6, slightly lower than the rate for the 12 months ending with October

1995 (65.9). These lower rates continue the generally downward trend observed since early 1991.

Natural increase

As a result of natural increase, the excess of births over deaths, an estimated 161,000 people, or 7.1 persons per 1,000 population, were added to the population during October 1996.

For the 12-month period ending with October 1996, 1,606,000 persons were added to the population. This represented a rate of natural increase of 6.1, the same as the rate for the preceding 12-month

Provisional Vital Statistics for the United States

[Rates for infant deaths are deaths under 1 year per 1,000 live births; fertility rates are live births per 1,000 women aged 15–44 years; all other rates are per 1,000 total population. Data are subject to monthly reporting variation; see [Technical notes](#)]

| Item | October | | | | January–October | | | | 12 months ending with October | | | | |
|--|---------|---------|-------|-------|-----------------|-----------|------|------|-------------------------------|-----------|-------|-------|-------|
| | Number | | Rate | | Number | | Rate | | Number | | Rate | | |
| | 1996 | 1995 | 1996 | 1995 | 1996 | 1995 | 1996 | 1995 | 1996 | 1995 | 1996 | 1995 | 1994 |
| Live births | 347,000 | 328,000 | 15.4 | 14.7 | 3,302,000 | 3,287,000 | 15.0 | 15.0 | 3,908,000 | 3,914,000 | 14.8 | 14.9 | 15.3 |
| Fertility rate | ... | ... | 68.8 | 64.9 | ... | ... | 66.5 | 66.4 | ... | ... | 65.6 | 65.9 | 67.3 |
| Deaths | 186,000 | 190,000 | 8.3 | 8.5 | 1,917,000 | 1,924,000 | 8.7 | 8.8 | 2,302,000 | 2,296,000 | 8.7 | 8.8 | 8.8 |
| Infant deaths | 2,500 | 2,500 | 7.1 | 7.4 | 23,600 | 24,500 | 7.2 | 7.5 | 28,300 | 29,500 | 7.3 | 7.6 | 8.0 |
| Natural increase | 161,000 | 138,000 | 7.1 | 6.2 | 1,385,000 | 1,363,000 | 6.3 | 6.2 | 1,606,000 | 1,618,000 | 6.1 | 6.1 | 6.5 |
| Marriages | 225,000 | 224,000 | 10.0 | 10.0 | 1,964,000 | 1,992,000 | 9.0 | 9.2 | 2,308,000 | 2,336,000 | 8.7 | 8.9 | 9.1 |
| Divorces | 98,000 | 98,000 | 4.4 | 4.4 | 966,000 | 982,000 | 4.4 | 4.5 | 1,152,000 | 1,183,000 | 4.4 | 4.5 | 4.5 |
| Population base (in millions) | ... | ... | 265.8 | 263.5 | ... | ... | ... | ... | ... | ... | 264.8 | 262.4 | 260.2 |

... Category not applicable.

NOTES: Figures include revisions received from the States. Twelve-month figures for the current year reflect revisions received for previous months, and figures for earlier years may differ from those previously published.



U.S. DEPARTMENT OF HEALTH AND HUMAN SERVICES
Centers for Disease Control and Prevention
National Center for Health Statistics



period. The leveling off in the rate of natural increase was due to similar decreases in the birth and death rates.

Marriages

An estimated 225,000 marriages were performed in October 1996, 1,000 more than were performed in October 1995 (224,000). The marriage rate per 1,000 population for October 1996 was the same as the rate for October a year earlier (10.0).

The number of couples who married in the first 10 months of 1996 (1,964,000) was 1 percent lower than the number who married in the January–October period in 1995 (1,992,000). The marriage rate for the 10-month period was 2 percent lower in 1996 (9.0) than the marriage rate for the same period in 1995 (9.2).

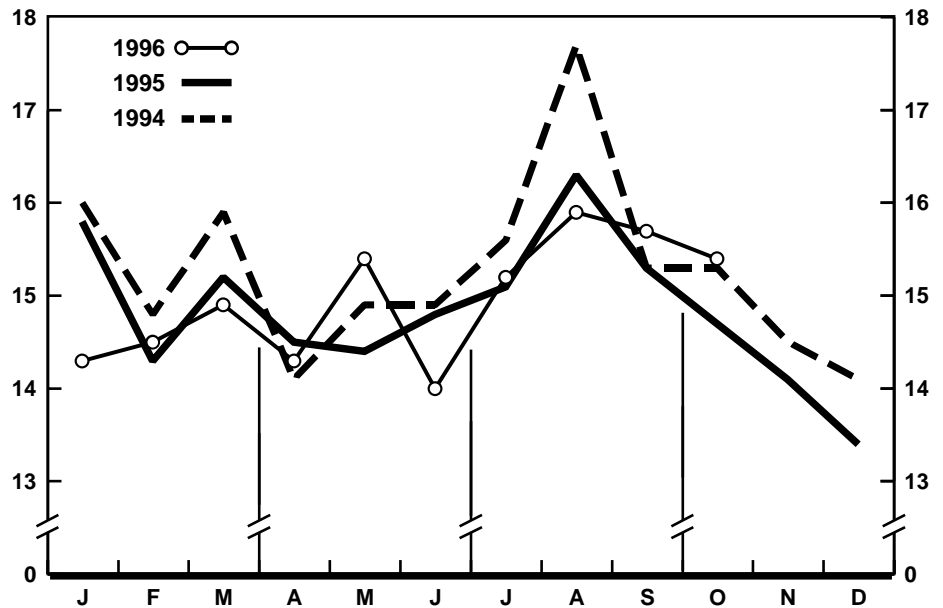
Marriages occurring during the 12-month period ending with October 1996 numbered 2,308,000, 1 percent fewer than the marriages that occurred during the comparable period a year earlier (2,336,000). The marriage rate for the current period (8.7) was 2 percent lower than the rate for the same period ending with October 1995 (8.9).

Divorces

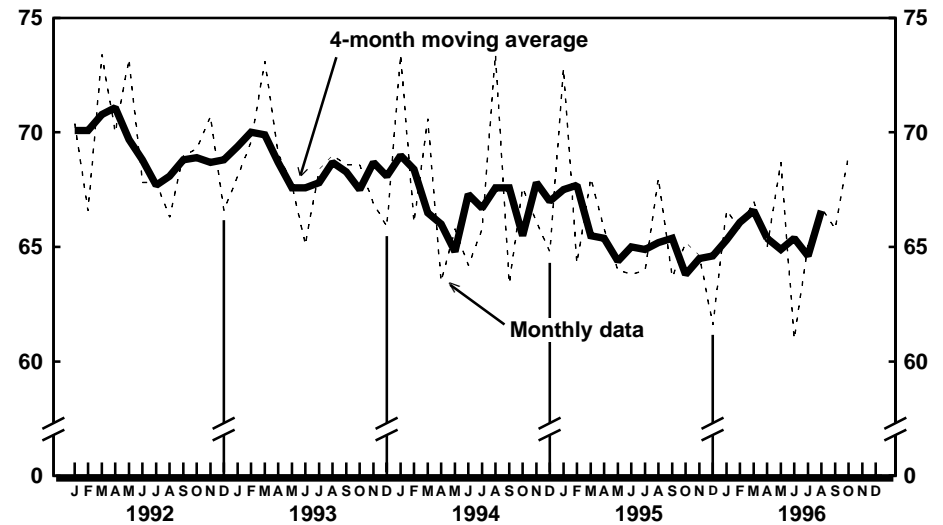
The number and the rate of couples divorcing in October 1996 were the same as the comparable figures for October 1995. The number of divorcing couples remained at 98,000, while the divorce rate per 1,000 population for October was 4.4 for both years.

The estimated number of divorces granted during January–October 1996 was 966,000, 2 percent fewer than the number granted during the same period in 1995 (982,000). The divorce rate for the 10-month period was 4.4 in 1996, also 2 percent lower than the rate for the 10-month period in 1995 (4.5).

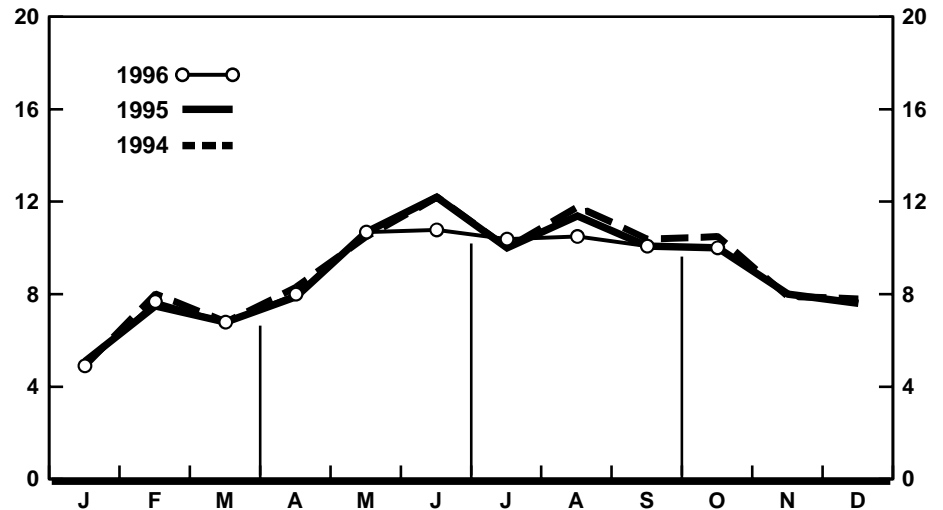
Approximately 1,152,000 couples divorced during the 12-month period ending with October 1996, a 3-percent decline from the number divorced during the same period a year earlier (1,183,000). The divorce rate for the current 12-month period (4.4) was 2 percent lower than the rate for the comparable period a year earlier (4.5).



Provisional birth rates per 1,000 population by month: United States, 1994–96



Provisional seasonally adjusted fertility rates per 1,000 women aged 15–44 years: United States, 1992–96



Provisional marriage rates per 1,000 population by month: United States, 1994–96

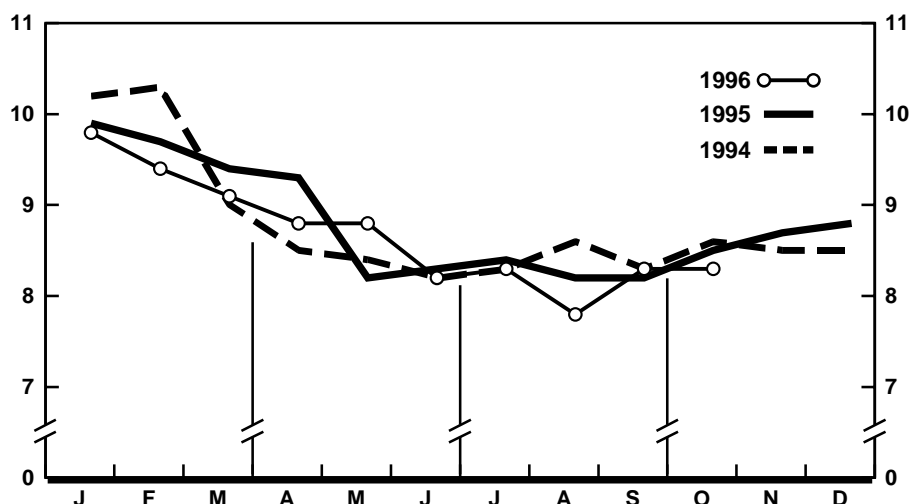
Deaths

For October 1996 there were an estimated 186,000 deaths in the United States. The death rate was 8.3 deaths per 1,000 population, 2 percent lower than the rate of 8.5 for October a year earlier. Among the 186,000 deaths for October 1996 were 2,500 deaths at ages under 1 year.

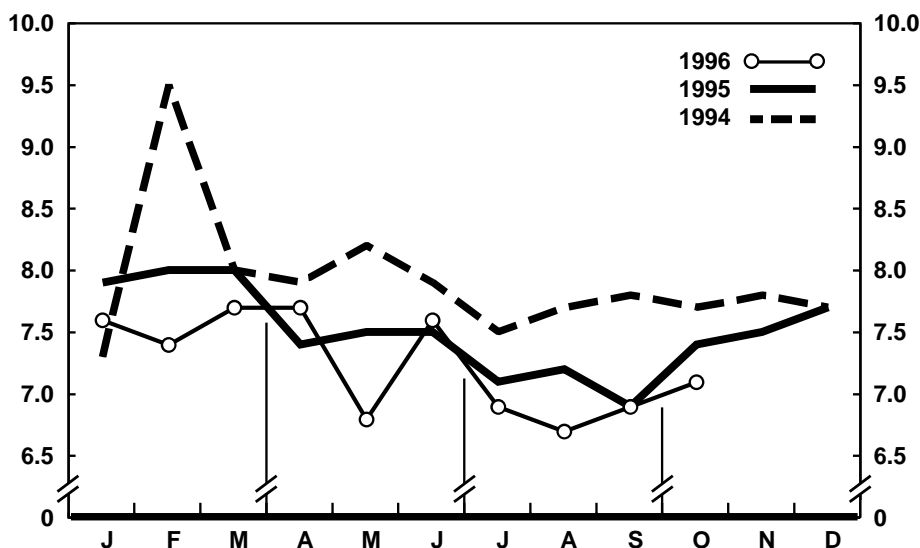
According to provisional statistics, 1,917,000 deaths occurred during the first 10 months of 1996, less than 1 percent below the number estimated for January–October 1995 (1,924,000). The death rate, 8.7 per 1,000 population, was 1 percent lower than the rate for January–October 1995 (8.8). Among the 1,917,000 deaths for January–October 1996 were 23,600 deaths at ages under 1 year, yielding an infant mortality rate of 7.2 per 1,000 live births. This rate was 4 percent lower than the rate of 7.5 for the first 10 months of 1995.

The death rate for the 12 months ending with October 1996 was 8.7 deaths per 1,000 population, 1 percent lower than the rate of 8.8 for the comparable 12-month period a year earlier. The infant mortality rate for this 12-month period was 7.3 per 1,000 live births, 4 percent lower than the rate of 7.6 for the 12 months ending with October 1995.

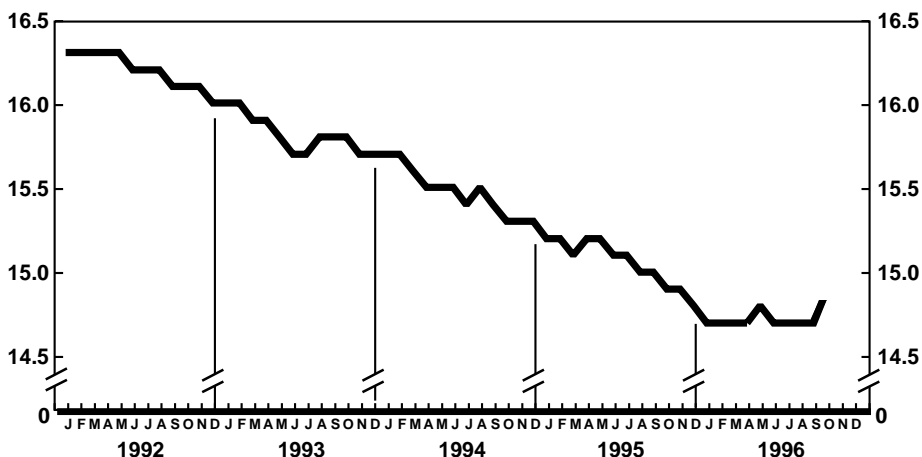
Current Mortality Sample, 12 months ending with September 1996—The provisional death rate for the 12 months ending with September 1996 was 871.4 per 100,000 population, 1 percent lower than the rate of 875.9 for the 12-month period ending September 1995. The provisional age-adjusted death rate for the 12-month period ending with September 1996 was 494.3 per 100,000 U.S. standard million population, 2 percent lower than the rate of 504.1 for the 12-month period ending with September 1995. Age-adjusted death rates control for changes and variations in the age composition of the population; therefore, they are better indicators than crude rates for showing changes in mortality risk over time and for showing differences between race-sex groups within the population. Among the race-sex groups, the estimated age-adjusted death rates decreased for white males, black males, and black females. By age the death rate



Provisional death rates per 1,000 population by month: United States, 1994–96



Provisional infant mortality rates per 1,000 live births by month: United States, 1994–96



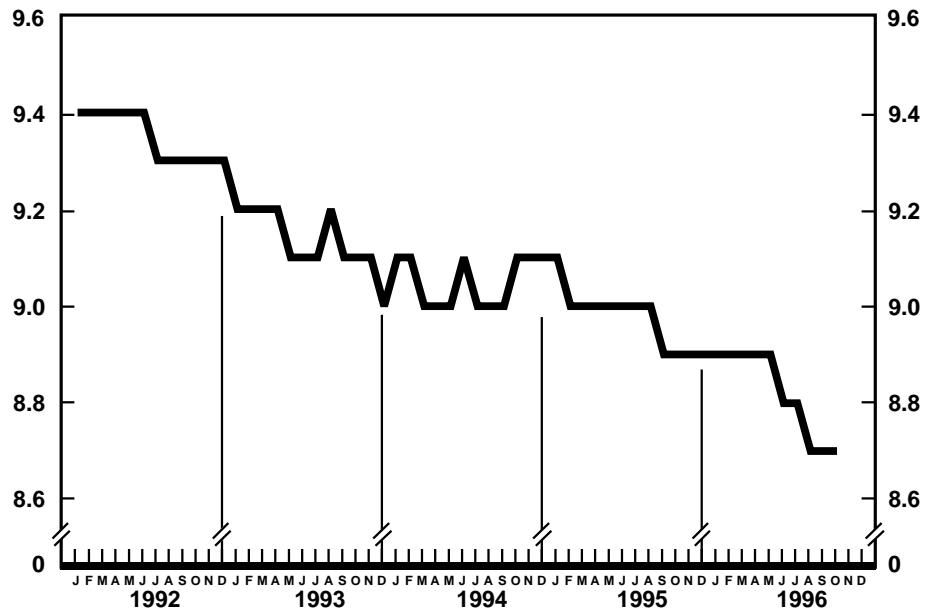
Provisional birth rates per 1,000 population for successive 12-month periods ending with month indicated: United States, 1992–96

for the total population decreased for these age groups: Under 1 year, 25–34 years, 35–44 years, 45–54 years, and 75–84 years. The rate increased for the age group 5–14 years.

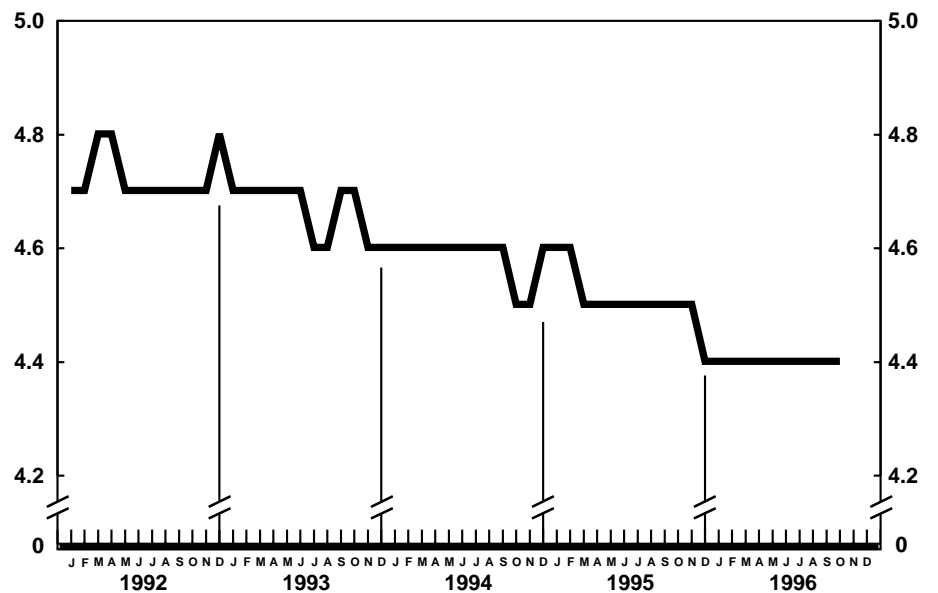
Among the major causes of death, the estimated death rate decreased between the two successive 12-month periods for Atherosclerosis, Chronic liver disease and cirrhosis, Homicide and legal intervention, and Human immunodeficiency virus infection. The death rate increased between the two successive 12-month periods for Alzheimer’s disease. The increase for Alzheimer’s disease may reflect changes in diagnostic practices rather than real increases in mortality from this cause.

The death rate for injury by firearms for the 12 months ending with September 1996 was 13.3 per 100,000 population, compared with a rate of 13.8 for the comparable 12-month period a year earlier. The change in the rate between the two periods was not statistically significant.

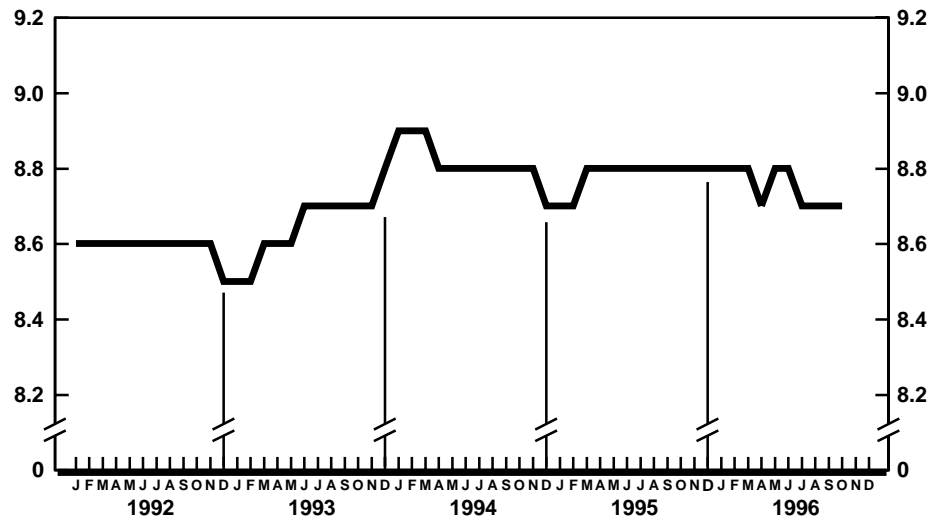
The infant mortality rate for the 12 months ending with September 1996 was 731.9 per 100,000 live births, 3.6 percent lower than the rate of 759.1 for the same 12-month period a year earlier. For infants under 28 days of age, the 12-month rate ending September 1996 was 482.4 compared with a rate of 482.8 for the 12-month period a year earlier. The change in the mortality rate for infants under 28 days of age was not statistically significant. The infant mortality rate for infants aged 28 days–11 months was 249.7, 9.1 percent lower than the rate of 274.8 for the 12-month period a year earlier. Among causes of infant death, changes in the infant mortality rate between the two successive 12-month periods were not statistically significant.



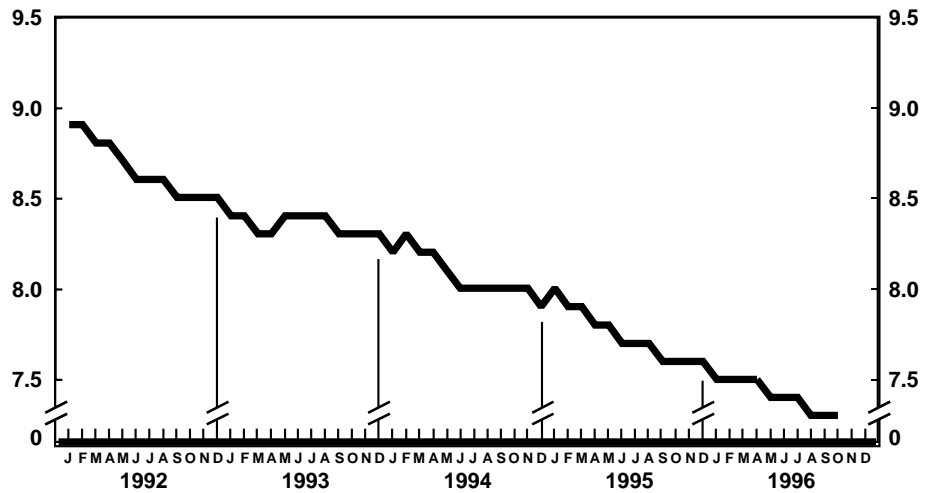
Provisional marriage rates per 1,000 population for successive 12-month periods ending with month indicated: United States, 1992–96



Provisional divorce rates per 1,000 population for successive 12-month periods ending with month indicated: United States, 1992–96



Provisional death rates per 1,000 population for successive 12-month periods ending with month indicated: United States, 1992-96



Provisional infant mortality rates per 1,000 live births for successive 12-month periods ending with month indicated: United States, 1992-96

Table 1. Provisional number of live births, marriages, divorces, deaths, and infant deaths and rates, by month: United States, January 1995–October 1996

[Data are provisional and are subject to monthly reporting variation; see [Technical notes](#)]

| Period | Live births | | | | Marriages | | Divorces | | Deaths | | Infant deaths | |
|---------------------|-------------|---------------------------------------|----------------------------------|--------|---------------------------|--------|---------------------------|--------|---------------------------|--------|----------------------------|-----|
| | Number | Rate per 1,000 women aged 15–44 years | | Number | Rate per 1,000 population | Number | Rate per 1,000 population | Number | Rate per 1,000 population | Number | Rate per 1,000 live births | |
| | | Unadjusted | Seasonally adjusted ¹ | | | | | | | | | |
| 1995: | | | | | | | | | | | | |
| January | 350,000 | 15.8 | 69.4 | 72.8 | 111,000 | 5.1 | 96,000 | 4.3 | 220,000 | 9.9 | 2,700 | 7.9 |
| February | 287,000 | 14.3 | 63.1 | 64.3 | 146,000 | 7.5 | 89,000 | 4.4 | 194,000 | 9.7 | 2,400 | 8.0 |
| March | 338,000 | 15.2 | 67.1 | 68.0 | 148,000 | 6.8 | 98,000 | 4.4 | 208,000 | 9.4 | 2,700 | 8.0 |
| April | 313,000 | 14.5 | 64.1 | 65.8 | 165,000 | 7.9 | 98,000 | 4.6 | 200,000 | 9.3 | 2,300 | 7.4 |
| May | 321,000 | 14.4 | 63.5 | 64.0 | 238,000 | 10.7 | 103,000 | 4.6 | 184,000 | 8.2 | 2,500 | 7.5 |
| June | 318,000 | 14.8 | 65.2 | 63.8 | 263,000 | 12.2 | 104,000 | 4.8 | 180,000 | 8.3 | 2,400 | 7.5 |
| July | 337,000 | 15.1 | 66.6 | 64.0 | 224,000 | 10.0 | 97,000 | 4.4 | 188,000 | 8.4 | 2,400 | 7.1 |
| August | 364,000 | 16.3 | 72.1 | 68.0 | 254,000 | 11.4 | 99,000 | 4.4 | 184,000 | 8.2 | 2,400 | 7.2 |
| September | 331,000 | 15.3 | 67.6 | 63.7 | 219,000 | 10.1 | 99,000 | 4.6 | 178,000 | 8.2 | 2,200 | 6.9 |
| October | 328,000 | 14.7 | 64.9 | 65.2 | 224,000 | 10.0 | 98,000 | 4.4 | 190,000 | 8.5 | 2,500 | 7.4 |
| November | 306,000 | 14.1 | 62.6 | 64.6 | 174,000 | 8.0 | 95,000 | 4.4 | 188,000 | 8.7 | 2,300 | 7.5 |
| December | 300,000 | 13.4 | 59.3 | 61.6 | 169,000 | 7.6 | 92,000 | 4.1 | 197,000 | 8.8 | 2,400 | 7.7 |
| 1996: | | | | | | | | | | | | |
| January | 320,000 | 14.3 | 63.4 | 66.6 | 105,000 | 4.9 | 96,000 | 4.3 | 220,000 | 9.8 | 2,400 | 7.6 |
| February | 304,000 | 14.5 | 64.5 | 65.8 | 155,000 | 7.7 | 85,000 | 4.1 | 197,000 | 9.4 | 2,300 | 7.4 |
| March | 333,000 | 14.9 | 66.1 | 67.0 | 147,000 | 6.8 | 93,000 | 4.2 | 204,000 | 9.1 | 2,500 | 7.7 |
| April | 309,000 | 14.3 | 63.3 | 65.0 | 168,000 | 8.0 | 94,000 | 4.3 | 192,000 | 8.8 | 2,400 | 7.7 |
| May | 344,000 | 15.4 | 68.2 | 68.7 | 240,000 | 10.7 | 103,000 | 4.6 | 197,000 | 8.8 | 2,300 | 6.8 |
| June | 304,000 | 14.0 | 62.2 | 61.0 | 235,000 | 10.8 | 104,000 | 4.8 | 179,000 | 8.2 | 2,300 | 7.6 |
| July | 342,000 | 15.2 | 67.8 | 65.1 | 233,000 | 10.4 | 100,000 | 4.5 | 186,000 | 8.3 | 2,300 | 6.9 |
| August | 356,000 | 15.9 | 70.6 | 66.7 | 237,000 | 10.5 | 100,000 | 4.5 | 176,000 | 7.8 | 2,200 | 6.7 |
| September | 342,000 | 15.7 | 69.9 | 65.8 | 219,000 | 10.1 | 92,000 | 4.2 | 181,000 | 8.3 | 2,300 | 6.9 |
| October | 347,000 | 15.4 | 68.8 | 69.0 | 225,000 | 10.0 | 98,000 | 4.4 | 186,000 | 8.3 | 2,500 | 7.1 |

¹The method of seasonal adjustment, developed by the U.S. Bureau of the Census, is described in *The X-11 Variant of the Census Method II Seasonal Adjustment Program*, Technical Paper No. 15 (1967 revision).

NOTE: Figures include all revisions received from the States and, therefore, may differ from those previously published.

Table 2. Provisional number of live births and deaths: Each division and State, October 1995 and 1996, and cumulative figures, 1994–96

[Data are estimates by State of residence; see [Technical notes](#)]

| Area | Live births | | | | | Deaths | | | | |
|--------------------------|-------------|--------|-----------------|---------|---------|---------|--------|-----------------|---------|---------|
| | October | | January–October | | | October | | January–October | | |
| | 1996 | 1995 | 1996 | 1995 | 1994 | 1996 | 1995 | 1996 | 1995 | 1994 |
| New England | 15,686 | 12,329 | 161,491 | 147,234 | 148,186 | 9,303 | 9,914 | 97,140 | 99,548 | 98,637 |
| Maine | 1,209 | 1,122 | 11,608 | 11,888 | 12,167 | 730 | 1,105 | 9,094 | 10,040 | 9,807 |
| New Hampshire | 1,389 | 1,486 | 11,926 | 12,720 | 12,424 | 799 | 539 | 7,561 | 7,462 | 7,430 |
| Vermont | 671 | 540 | 5,751 | 5,681 | 5,764 | 467 | 281 | 4,180 | 4,133 | 3,781 |
| Massachusetts | 5,922 | 3,941 | 84,687 | 66,522 | 71,669 | 4,061 | 4,797 | 45,001 | 46,306 | 46,242 |
| Rhode Island | 1,023 | 1,213 | 10,536 | 10,715 | 11,227 | 810 | 797 | 7,695 | 7,938 | 7,699 |
| Connecticut | 5,472 | 4,027 | 36,983 | 39,708 | 34,935 | 2,436 | 2,395 | 23,609 | 23,669 | 23,678 |
| Middle Atlantic | 46,781 | 47,011 | 444,607 | 453,974 | 461,061 | 31,825 | 31,203 | 303,456 | 309,830 | 308,644 |
| New York | 24,495 | 26,314 | 226,691 | 223,902 | 232,645 | 14,687 | 15,300 | 137,262 | 141,835 | 141,565 |
| New Jersey | 8,333 | 6,973 | 88,948 | 100,933 | 95,043 | 6,024 | 5,926 | 59,781 | 62,103 | 59,952 |
| Pennsylvania | 13,953 | 13,724 | 128,968 | 129,139 | 133,373 | 11,114 | 9,977 | 106,413 | 105,892 | 107,127 |
| East North Central | 57,232 | 58,336 | 514,783 | 526,338 | 539,612 | 29,992 | 32,912 | 317,731 | 327,510 | 328,538 |
| Ohio | 17,266 | 14,731 | 128,784 | 130,207 | 135,720 | 7,720 | 8,356 | 85,642 | 87,272 | 87,814 |
| Indiana | 5,866 | 9,563 | 57,629 | 69,229 | 69,062 | 3,336 | 4,934 | 39,059 | 43,383 | 44,832 |
| Illinois | 16,269 | 15,911 | 154,420 | 156,459 | 158,118 | 8,692 | 8,701 | 86,621 | 89,927 | 89,236 |
| Michigan | 11,878 | 12,461 | 117,314 | 113,629 | 118,571 | 6,508 | 7,057 | 68,909 | 69,544 | 69,275 |
| Wisconsin | 5,953 | 5,670 | 56,636 | 56,814 | 58,141 | 3,736 | 3,864 | 37,500 | 37,384 | 37,381 |
| West North Central | 21,915 | 23,416 | 216,659 | 214,530 | 212,968 | 13,393 | 13,512 | 139,699 | 140,325 | 141,891 |
| Minnesota | 5,700 | 5,282 | 53,900 | 53,035 | 54,468 | 3,172 | 3,111 | 30,464 | 30,696 | 30,261 |
| Iowa | 2,985 | 2,986 | 31,483 | 28,984 | 30,293 | 1,794 | 1,075 | 21,822 | 20,789 | 21,906 |
| Missouri | 6,328 | 7,942 | 62,967 | 63,866 | 64,661 | 4,059 | 5,056 | 44,678 | 45,977 | 47,212 |
| North Dakota | 762 | 702 | 7,104 | 7,307 | 7,222 | 516 | 465 | 4,834 | 4,996 | 4,956 |
| South Dakota | 1,076 | 753 | 8,437 | 9,126 | 8,854 | 630 | 523 | 5,300 | 5,691 | 5,650 |
| Nebraska | 1,934 | 1,938 | 19,699 | 19,567 | 19,013 | 1,252 | 1,332 | 12,601 | 12,521 | 12,210 |
| Kansas | 3,130 | 3,813 | 33,069 | 32,645 | 28,457 | 1,970 | 1,950 | 20,000 | 19,655 | 19,696 |
| South Atlantic | 64,557 | 53,745 | 552,903 | 549,171 | 552,561 | 34,917 | 34,400 | 367,308 | 363,218 | 358,774 |
| Delaware | 862 | 863 | 8,587 | 8,434 | 8,665 | 560 | 523 | 5,296 | 5,107 | 5,133 |
| Maryland | 7,338 | 5,787 | 61,598 | 61,367 | 58,446 | 3,770 | 3,223 | 34,936 | 33,824 | 32,582 |
| District of Columbia | 727 | 733 | 6,881 | 7,567 | 8,248 | 544 | 576 | 4,989 | 5,488 | 5,706 |
| Virginia | 8,083 | 6,170 | 74,288 | 74,905 | 79,373 | 4,303 | 4,176 | 43,429 | 43,744 | 45,029 |
| West Virginia | 1,900 | 1,447 | 16,910 | 17,972 | 18,485 | 1,751 | 1,592 | 15,957 | 16,570 | 16,950 |
| North Carolina | 12,986 | 8,998 | 88,720 | 86,793 | 85,928 | 5,233 | 5,320 | 55,129 | 53,946 | 54,107 |
| South Carolina | 4,745 | 4,085 | 43,067 | 41,789 | 43,139 | 2,578 | 2,489 | 28,143 | 26,876 | 26,620 |
| Georgia | 10,948 | 9,676 | 96,425 | 96,512 | 91,152 | 4,756 | 4,592 | 49,620 | 48,588 | 47,749 |
| Florida | 16,968 | 15,986 | 153,832 | 153,832 | 159,125 | 11,422 | 11,909 | 129,809 | 129,075 | 124,898 |
| East South Central | 20,402 | 20,794 | 189,624 | 188,483 | 192,473 | 11,901 | 13,528 | 130,614 | 132,878 | 130,425 |
| Kentucky | 4,090 | 4,611 | 43,969 | 43,501 | 43,922 | 3,150 | 3,113 | 31,490 | 32,337 | 31,575 |
| Tennessee | 6,981 | 6,872 | 60,536 | 60,837 | 62,661 | 3,347 | 4,542 | 41,119 | 42,680 | 40,657 |
| Alabama | 5,442 | 5,828 | 51,429 | 52,095 | 51,144 | 3,250 | 3,624 | 35,748 | 35,360 | 35,791 |
| Mississippi | 3,889 | 3,483 | 33,690 | 32,050 | 34,746 | 2,154 | 2,249 | 22,257 | 22,501 | 22,402 |
| West South Central | 40,819 | 30,748 | 405,149 | 409,062 | 396,373 | 18,377 | 15,401 | 202,757 | 199,908 | 200,611 |
| Arkansas | 2,963 | 2,828 | 30,177 | 28,117 | 28,952 | 2,054 | 2,299 | 21,430 | 21,187 | 22,516 |
| Louisiana | 5,567 | 6,533 | 55,949 | 57,229 | 56,873 | 2,967 | 3,395 | 34,258 | 33,203 | 34,603 |
| Oklahoma | 4,305 | 4,723 | 38,224 | 39,508 | 38,306 | 2,727 | 2,658 | 27,657 | 27,205 | 27,082 |
| Texas ¹ | 27,984 | 16,664 | 280,799 | 284,208 | 272,242 | 10,629 | 7,049 | 119,412 | 118,313 | 116,410 |
| Mountain | 23,916 | 20,151 | 216,354 | 205,558 | 205,987 | 10,622 | 9,834 | 102,373 | 95,194 | 94,390 |
| Montana | 963 | 920 | 9,172 | 9,408 | 9,230 | 677 | 685 | 6,434 | 6,368 | 6,182 |
| Idaho | 1,569 | 1,611 | 15,974 | 14,799 | 14,668 | 762 | 766 | 7,208 | 7,072 | 7,079 |
| Wyoming | 575 | 592 | 5,225 | 5,359 | 5,396 | 328 | 311 | 2,967 | 3,092 | 2,918 |
| Colorado | 3,915 | 4,237 | 40,446 | 42,489 | 45,688 | 2,481 | 2,204 | 21,373 | 20,855 | 20,237 |
| New Mexico | 2,505 | 2,317 | 22,776 | 22,864 | 23,544 | 1,084 | 941 | 10,478 | 10,303 | 10,171 |
| Arizona | 8,308 | 5,182 | 67,861 | 59,852 | 56,192 | 3,419 | 3,045 | 33,848 | 28,536 | 29,232 |
| Utah | 3,408 | 3,726 | 35,020 | 33,105 | 32,441 | 891 | 855 | 9,191 | 8,865 | 8,729 |
| Nevada | 2,673 | 1,566 | 19,880 | 17,682 | 18,828 | 980 | 1,027 | 10,874 | 10,103 | 9,842 |
| Pacific | 63,215 | 59,989 | 586,075 | 593,905 | 625,959 | 25,734 | 25,334 | 255,848 | 254,902 | 252,719 |
| Washington | 7,543 | 6,442 | 68,230 | 66,332 | 67,168 | 4,072 | 3,255 | 34,518 | 33,024 | 31,895 |
| Oregon | 3,450 | 3,642 | 37,554 | 37,017 | 35,614 | 2,230 | 2,230 | 23,338 | 23,551 | 23,351 |
| California ¹ | 49,960 | 47,560 | 456,595 | 466,424 | 496,385 | 18,626 | 19,060 | 189,404 | 189,999 | 189,380 |
| Alaska | 810 | 779 | 8,374 | 8,796 | 10,590 | 161 | 187 | 1,972 | 2,032 | 2,018 |
| Hawaii | 1,452 | 1,566 | 15,322 | 15,336 | 16,202 | 645 | 602 | 6,616 | 6,296 | 6,075 |
| Puerto Rico ² | 5,722 | 5,650 | 50,083 | 50,027 | --- | 2,512 | 2,871 | 22,638 | 24,677 | --- |

--- Data not available.

¹Figures include adjustments for varying lengths of reporting periods; see [Technical notes](#).

²Data for Puerto Rico are not included in U.S. total figures.

NOTES: Figures include all revisions received from the States. Cumulative figures for the current year reflect revisions received for previous months, and figures for earlier years may differ from those previously published.

Table 3. Provisional number of marriages and divorces: Each division and State, October 1995 and 1996, and cumulative figures, 1994–96

[By State of occurrence. Number of events reported; see [Technical notes](#). Divorces include reported annulments]

| Area | Marriages | | | | | Divorces | | | | |
|---------------------------|---------------------|--------|----------------------|---------|---------|---------------------|---------------------|----------------------|----------------------|----------------------|
| | October | | January–October | | | October | | January–October | | |
| | 1996 | 1995 | 1996 | 1995 | 1994 | 1996 | 1995 | 1996 | 1995 | 1994 |
| New England | ¹ 12,053 | 12,501 | ¹ 72,478 | 84,352 | 91,639 | 4,163 | 3,127 | 32,652 | 33,359 | 32,211 |
| Maine | --- | 1,251 | --- | 9,691 | 9,356 | 549 | 397 | 4,226 | 4,355 | 4,386 |
| New Hampshire | 1,346 | 1,363 | 8,128 | 7,995 | 8,718 | 474 | 495 | 3,904 | 4,126 | 4,189 |
| Vermont | 862 | 752 | 5,064 | 5,041 | 4,778 | 292 | 264 | 2,231 | 2,396 | 2,035 |
| Massachusetts | 5,544 | 5,364 | 34,022 | 36,004 | 43,402 | 1,662 | 843 | 10,827 | 11,241 | 11,143 |
| Rhode Island | 883 | 882 | 6,801 | 6,414 | 6,117 | 304 | 265 | 2,758 | 3,090 | 2,687 |
| Connecticut | 3,418 | 2,889 | 18,463 | 19,207 | 19,268 | 882 | 863 | 8,706 | 8,151 | 7,771 |
| Middle Atlantic | 33,705 | 31,308 | 225,980 | 226,154 | 235,075 | 11,121 | 10,832 | 105,105 | 100,896 | 100,020 |
| New York ² | 19,710 | 16,520 | 124,427 | 119,015 | 125,635 | 5,780 | 5,556 | 52,348 | 47,341 | 46,871 |
| New Jersey | 5,469 | 6,659 | 40,711 | 43,985 | 45,014 | 2,227 | 2,109 | 21,130 | 20,603 | 20,167 |
| Pennsylvania | 8,526 | 8,129 | 60,842 | 63,154 | 64,426 | 3,114 | 3,167 | 31,627 | 32,952 | 32,982 |
| East North Central | 34,020 | 37,407 | 262,109 | 285,731 | 293,624 | ¹ 12,294 | ¹ 12,809 | ¹ 116,785 | ¹ 121,268 | ¹ 123,506 |
| Ohio | 9,281 | 9,276 | 70,383 | 77,568 | 77,995 | 3,877 | 3,658 | 36,304 | 40,539 | 41,418 |
| Indiana | 2,650 | 5,370 | 23,548 | 43,050 | 43,033 | --- | --- | --- | --- | --- |
| Illinois | 10,326 | 9,667 | 76,824 | 70,442 | 78,765 | 3,635 | 3,636 | 33,622 | 32,369 | 34,889 |
| Michigan | 7,279 | 8,581 | 59,081 | 62,220 | 61,472 | 3,161 | 3,882 | 32,407 | 33,667 | 32,674 |
| Wisconsin | 4,484 | 4,513 | 32,273 | 32,451 | 32,359 | 1,621 | 1,633 | 14,452 | 14,693 | 14,525 |
| West North Central | 16,831 | 14,968 | 128,418 | 127,503 | 127,069 | 6,643 | 5,856 | 62,285 | 62,635 | 65,045 |
| Minnesota | 3,628 | 3,669 | 29,671 | 29,441 | 28,840 | 1,403 | 1,309 | 12,689 | 13,008 | 13,379 |
| Iowa | 2,525 | 2,583 | 19,827 | 19,400 | 19,604 | 788 | 1,004 | 8,257 | 8,822 | 9,344 |
| Missouri | 4,490 | 3,951 | 39,768 | 38,342 | 37,964 | 2,247 | 1,686 | 21,879 | 21,964 | 22,541 |
| North Dakota | 505 | 401 | 4,442 | 4,046 | 4,258 | 193 | 211 | 1,933 | 1,861 | 1,838 |
| South Dakota | 584 | 630 | 5,971 | 6,485 | 6,652 | 256 | 264 | 2,301 | 2,402 | 2,455 |
| Nebraska | 1,036 | 1,012 | 10,901 | 10,706 | 10,852 | 564 | 491 | 5,103 | 5,193 | 5,457 |
| Kansas | 4,063 | 2,722 | 17,838 | 19,083 | 18,899 | 1,192 | 891 | 10,123 | 9,385 | 10,031 |
| South Atlantic | 40,047 | 38,972 | 372,098 | 376,074 | 372,379 | ¹ 18,164 | 17,862 | ¹ 185,475 | 189,422 | 193,328 |
| Delaware | 543 | 546 | 4,473 | 4,578 | 4,251 | 307 | 289 | 2,887 | 3,111 | 2,948 |
| Maryland | 4,193 | 4,144 | 35,174 | 36,503 | 36,619 | 1,569 | 772 | 13,127 | 12,331 | 14,182 |
| District of Columbia | 186 | 312 | 1,830 | 1,804 | 2,209 | --- | 225 | --- | 1,329 | 1,881 |
| Virginia | 6,707 | 6,708 | 55,181 | 58,199 | 58,894 | 2,545 | 2,429 | 23,288 | 23,465 | 24,542 |
| West Virginia | 1,107 | 1,277 | 9,454 | 9,689 | 8,921 | 627 | 841 | 6,257 | 7,531 | 7,555 |
| North Carolina | 5,670 | 5,521 | 51,791 | 52,823 | 42,518 | 2,723 | 3,117 | 30,086 | 31,593 | 30,753 |
| South Carolina | 3,555 | 3,413 | 36,582 | 38,171 | 43,952 | 1,355 | 1,365 | 12,980 | 12,474 | 12,754 |
| Georgia | 5,573 | 6,038 | 51,207 | 52,990 | 53,287 | 3,037 | 3,309 | 30,389 | 31,318 | 30,839 |
| Florida | 12,513 | 11,013 | 126,406 | 121,317 | 121,728 | 6,001 | 5,515 | 66,461 | 66,270 | 67,874 |
| East South Central | 15,244 | 15,706 | 160,572 | 163,101 | 158,688 | 8,094 | 8,832 | 83,367 | 81,107 | 82,566 |
| Kentucky | 4,149 | 4,521 | 36,773 | 39,995 | 39,968 | 1,690 | 2,170 | 18,188 | 19,278 | 19,006 |
| Tennessee | 7,181 | 5,141 | 66,994 | 70,462 | 65,710 | 3,008 | 2,835 | 29,089 | 28,593 | 28,239 |
| Alabama | 2,723 | 4,620 | 39,175 | 35,127 | 34,275 | 2,089 | 2,586 | 22,481 | 22,152 | 22,552 |
| Mississippi | 1,191 | 1,424 | 17,630 | 17,517 | 18,735 | 1,307 | 1,241 | 13,609 | 11,084 | 12,769 |
| West South Central | 23,198 | 16,488 | 245,910 | 251,420 | 252,459 | ¹ 2,202 | ¹ 8,641 | ¹ 28,335 | ¹ 116,847 | ¹ 117,957 |
| Arkansas | 2,901 | 2,522 | 29,400 | 29,959 | 31,981 | 713 | 1,352 | 12,113 | 13,230 | 14,748 |
| Louisiana | 4,573 | 2,489 | 31,586 | 33,431 | 34,795 | --- | --- | --- | --- | --- |
| Oklahoma | 1,868 | 2,056 | 22,421 | 24,068 | 24,868 | 1,489 | 2,003 | 16,222 | 18,438 | 18,220 |
| Texas ³ | 13,856 | 9,421 | 162,503 | 163,962 | 160,815 | --- | 5,286 | --- | 85,179 | 84,989 |
| Mountain | ¹ 12,200 | 21,871 | ¹ 120,156 | 232,117 | 230,590 | ¹ 5,007 | ¹ 6,537 | ¹ 50,225 | ¹ 63,008 | 74,029 |
| Montana | 477 | 445 | 5,919 | 5,939 | 6,135 | 406 | 353 | 3,594 | 3,469 | 3,424 |
| Idaho | 1,288 | 1,465 | 12,912 | 13,466 | 13,478 | 508 | 613 | 5,783 | 5,670 | 5,897 |
| Wyoming | 329 | 264 | 4,269 | 4,267 | 4,073 | 290 | 290 | 2,612 | 2,671 | 2,498 |
| Colorado | 4,114 | 2,438 | 30,431 | 30,015 | 30,176 | --- | --- | --- | --- | 15,928 |
| New Mexico ^{4,5} | 1,271 | 1,211 | 13,688 | 12,819 | 10,640 | 830 | 1,037 | 9,228 | 9,749 | 8,330 |
| Arizona ² | 3,187 | 3,086 | 33,543 | 32,451 | 30,380 | 2,255 | 2,455 | 21,635 | 23,123 | 19,403 |
| Utah | 1,534 | 1,494 | 19,394 | 18,736 | 17,895 | 718 | 755 | 7,373 | 7,509 | 7,651 |
| Nevada | --- | 11,468 | --- | 114,424 | 117,813 | --- | 1,034 | --- | 10,817 | 10,898 |
| Pacific | 26,171 | 31,255 | 256,609 | 242,380 | 252,878 | ¹ 3,827 | ¹ 4,329 | ¹ 40,756 | ¹ 43,607 | ¹ 45,038 |
| Washington | 3,244 | 3,187 | 32,894 | 37,133 | 36,577 | 1,736 | 2,500 | 22,155 | 24,164 | 24,723 |
| Oregon | 3,470 | 1,767 | 22,099 | 22,640 | 21,761 | 1,637 | 1,420 | 12,430 | 12,670 | 13,594 |
| California | 17,636 | 24,371 | 180,812 | 162,196 | 174,671 | --- | --- | --- | --- | --- |
| Alaska | 237 | 349 | 4,322 | 4,687 | 4,730 | 210 | 61 | 2,257 | 2,352 | 2,717 |
| Hawaii | 1,584 | 1,581 | 16,482 | 15,724 | 15,139 | 244 | 348 | 3,914 | 4,421 | 4,004 |
| Puerto Rico ⁶ | 2,028 | 2,150 | 23,775 | 25,423 | --- | --- | --- | --- | --- | --- |

--- Data not available.

¹Excludes figures for State(s) shown below as not available.

²Figures for marriages are marriage licenses issued for some counties.

³Figures include adjustments for varying lengths of reporting periods; see [Technical notes](#).

⁴Figures for marriages are marriage licenses issued.

⁵Figures for divorces include estimates for some counties.

⁶Data for Puerto Rico are not included in U.S. total figures.

NOTES: Figures include all revisions received from the States. Cumulative figures for the current year reflect revisions received for previous months, and figures for earlier years may differ from those previously published.

Table 4. Provisional number of deaths under 1 year and infant mortality rates: Each division and State, 12 months ending with October 1995 and 1996

[Data are estimates by State of residence. Figures should be interpreted with caution because of conversion of place of occurrence to place of residence; see [Technical notes](#). Infant mortality rates are deaths under 1 year per 1,000 live births in specified area]

| Area | 12 months ending with October | | | |
|------------------------------------|-------------------------------|------|--------|------|
| | 1996 | | 1995 | |
| | Number | Rate | Number | Rate |
| New England | 964 | 5.3 | 924 | 5.3 |
| Maine | 66 | 4.8 | 71 | 5.1 |
| New Hampshire | 73 | 5.1 | 71 | 4.8 |
| Vermont | 62 | 9.1 | 39 | 5.5 |
| Massachusetts | 426 | 4.6 | 393 | 5.0 |
| Rhode Island | 72 | 5.8 | 91 | 7.0 |
| Connecticut | 265 | 6.2 | 259 | 5.5 |
| Middle Atlantic | 3,805 | 7.3 | 4,001 | 7.3 |
| New York | 1,808 | 6.8 | 2,083 | 7.7 |
| New Jersey | 826 | 8.0 | 788 | 6.4 |
| Pennsylvania | 1,171 | 7.7 | 1,130 | 7.4 |
| East North Central | 4,990 | 8.1 | 5,361 | 8.5 |
| Ohio | 1,202 | 7.8 | 1,328 | 8.5 |
| Indiana | 632 | 8.7 | 750 | 9.0 |
| Illinois | 1,554 | 8.5 | 1,623 | 8.7 |
| Michigan | 1,093 | 8.0 | 1,156 | 8.6 |
| Wisconsin | 509 | 7.6 | 504 | 7.5 |
| West North Central | 1,847 | 7.2 | 1,866 | 7.4 |
| Minnesota | 415 | 6.5 | 392 | 6.2 |
| Iowa | 226 | 5.8 | 251 | 7.3 |
| Missouri | 578 | 7.8 | 592 | 7.9 |
| North Dakota | 34 | 4.0 | 49 | 5.6 |
| South Dakota | 56 | 5.7 | 115 | 10.6 |
| Nebraska | 195 | 8.4 | 183 | 7.8 |
| Kansas | 343 | 9.1 | 284 | 7.6 |
| South Atlantic | 5,462 | 8.3 | 5,659 | 8.6 |
| Delaware | 74 | 7.3 | 70 | 6.9 |
| Maryland | 594 | 8.2 | 665 | 8.9 |
| District of Columbia | 110 | 13.3 | 173 | 19.2 |
| Virginia | 666 | 7.5 | 686 | 7.5 |
| West Virginia | 157 | 7.9 | 151 | 7.2 |
| North Carolina | 946 | 9.1 | 1,007 | 9.8 |
| South Carolina | 411 | 8.0 | 411 | 8.3 |
| Georgia | 1,069 | 9.5 | 1,069 | 9.4 |
| Florida | 1,435 | 7.5 | 1,427 | 7.7 |
| East South Central | 2,030 | 9.0 | 2,168 | 9.5 |
| Kentucky | 406 | 7.9 | 403 | 7.8 |
| Tennessee | 609 | 8.3 | 722 | 9.8 |
| Alabama | 636 | 10.5 | 617 | 10.0 |
| Mississippi | 379 | 9.8 | 426 | 10.5 |
| West South Central | 3,365 | 7.1 | 3,511 | 7.3 |
| Arkansas | 304 | 8.4 | 262 | 7.8 |
| Louisiana | 547 | 8.3 | 634 | 9.2 |
| Oklahoma | 400 | 9.0 | 408 | 8.7 |
| Texas ¹ | 2,114 | 6.4 | 2,207 | 6.6 |
| Mountain | 1,756 | 7.0 | 1,665 | 6.9 |
| Montana | 89 | 8.1 | 81 | 7.2 |
| Idaho | 134 | 7.1 | 111 | 6.3 |
| Wyoming | 40 | 6.5 | 58 | 9.1 |
| Colorado | 356 | 7.4 | 354 | 6.9 |
| New Mexico | 165 | 6.1 | 203 | 7.4 |
| Arizona | 600 | 7.8 | 520 | 7.4 |
| Utah | 225 | 5.5 | 219 | 5.5 |
| Nevada | 147 | 6.2 | 119 | 5.8 |
| Pacific | 4,143 | 5.9 | 4,411 | 6.3 |
| Washington | 419 | 5.2 | 414 | 5.3 |
| Oregon | 226 | 5.2 | 272 | 6.2 |
| California ¹ | 3,323 | 6.0 | 3,539 | 6.4 |
| Alaska | 73 | 7.6 | 72 | 7.0 |
| Hawaii | 102 | 5.6 | 114 | 6.2 |
| Puerto Rico ² | 604 | 9.9 | --- | --- |

--- Data not available.

¹Figures include adjustments for varying lengths of reporting periods; see [Technical notes](#).

²Data for Puerto Rico are not included in U.S. total figures.

NOTES: Figures include all revisions received from the States. Figures for the current year reflect revisions received for previous months, and figures for earlier years may differ from those previously published.

Table 5. Provisional number of deaths and death rates, by age, race, and sex, and age-adjusted death rates by race and sex: United States, September 1995 and 1996, cumulative figures 1995 and 1996, and 12 months ending with September 1995 and 1996

[Data are provisional, estimated from a 10-percent sample of deaths. Age-specific rates on an annual basis per 100,000 population in specified group; age-adjusted rates per 100,000 U.S. standard million population; see [Technical notes](#). Because of rounding of estimates, figures may not add to totals. For method of computation and information on standard errors of the estimates, see [Technical notes](#)]

| Age, race, and sex | September | | | | January–September | | | | 12 months ending with September | | | | | | | |
|--|-----------|----------|---------|----------|-------------------|--------------------|-----------|--------------------|---------------------------------|--------------------|-----------|--------------------|--------|-------|--------|-------|
| | 1996 | | 1995 | | 1996 | | 1995 | | 1996 | | 1995 | | | | | |
| | Number | Rate | Number | Rate | Number | Rate | Number | Rate | Number | Rate | Number | Rate | | | | |
| All races, both sexes¹ | | | | | | | | | | | | | | | | |
| All ages | 181,000 | 832.3 | 178,000 | 821.2 | 1,731,000 | 873.3 | 1,735,000 | 883.9 | 2,305,000 | 871.4 | 2,296,000 | 875.9 | | | | |
| Under 1 year | } 3,490 | 73.3 | 3,330 | 70.1 | 21,100 | ² 732.6 | 22,100 | ² 766.7 | 28,400 | ² 735.4 | 29,700 | ² 773.3 | | | | |
| 1–4 years | | | | | 4,680 | 40.0 | 5,200 | 44.0 | 6,210 | 39.8 | 6,940 | 43.9 | | | | |
| 5–14 years | | | | | 6,780 | 23.5 | 5,990 | 21.0 | 9,020 | 23.4 | 8,010 | 21.1 | | | | |
| 15–24 years | | | | | 2,970 | 100.7 | 2,970 | 100.5 | 25,340 | 94.2 | 25,790 | 96.0 | 34,100 | 95.0 | 34,940 | 97.3 |
| 25–34 years | | | | | 4,540 | 137.5 | 4,680 | 139.8 | 40,050 | 132.2 | 44,030 | 143.8 | 54,290 | 134.0 | 58,620 | 143.1 |
| 35–44 years | 7,940 | 223.3 | 8,720 | 248.7 | 72,830 | 225.5 | 77,000 | 242.9 | 98,480 | 228.4 | 101,730 | 240.5 | | | | |
| 45–54 years | 11,760 | 440.6 | 11,400 | 442.4 | 106,220 | 441.3 | 108,000 | 467.2 | 141,380 | 441.3 | 142,080 | 461.0 | | | | |
| 55–64 years | 18,620 | 1,061.6 | 18,830 | 1,082.4 | 175,680 | 1,101.7 | 175,800 | 1,113.5 | 234,330 | 1,101.8 | 235,100 | 1,114.5 | | | | |
| 65–74 years | 37,390 | 2,444.8 | 36,840 | 2,389.6 | 358,120 | 2,557.8 | 362,380 | 2,583.9 | 474,690 | 2,537.5 | 479,670 | 2,558.2 | | | | |
| 75–84 years | 51,790 | 5,500.9 | 49,630 | 5,391.8 | 494,340 | 5,805.6 | 490,420 | 5,905.6 | 655,490 | 5,777.3 | 649,800 | 5,866.7 | | | | |
| 85 years and over | 42,630 | 13,846.8 | 41,080 | 13,678.3 | 424,910 | 15,280.4 | 416,890 | 15,438.4 | 566,280 | 15,296.6 | 548,710 | 15,250.4 | | | | |
| Not stated | 70 | ... | 70 | ... | 790 | ... | 810 | ... | 1,000 | ... | 1,020 | ... | | | | |
| Age-adjusted rate ³ | ... | 478.2 | ... | 478.1 | ... | 494.9 | ... | 507.3 | ... | 494.3 | ... | 504.1 | | | | |
| All races, male¹ | | | | | | | | | | | | | | | | |
| All ages | 91,830 | 863.4 | 90,550 | 857.1 | 875,250 | 904.0 | 880,510 | 919.0 | 1,166,510 | 902.7 | 1,165,100 | 910.2 | | | | |
| Under 1 year | } 2,040 | 83.7 | 1,920 | 79.0 | 11,430 | ² 773.9 | 12,190 | ² 828.5 | 15,560 | ² 787.8 | 16,610 | ² 845.7 | | | | |
| 1–4 years | | | | | 2,650 | 44.4 | 2,940 | 49.0 | 3,560 | 44.6 | 3,950 | 48.8 | | | | |
| 5–14 years | | | | | 4,050 | 27.4 | 3,630 | 25.0 | 5,440 | 27.6 | 4,750 | 24.4 | | | | |
| 15–24 years | | | | | 2,320 | 154.0 | 2,200 | 145.9 | 19,100 | 139.2 | 19,600 | 142.9 | 25,940 | 141.5 | 26,760 | 145.9 |
| 25–34 years | | | | | 3,070 | 186.2 | 3,390 | 202.6 | 28,360 | 187.5 | 32,060 | 209.5 | 38,680 | 191.0 | 42,690 | 208.5 |
| 35–44 years | 5,180 | 293.5 | 6,020 | 346.1 | 49,610 | 309.5 | 53,430 | 339.8 | 67,080 | 313.6 | 70,610 | 336.6 | | | | |
| 45–54 years | 7,610 | 583.6 | 7,310 | 580.7 | 67,460 | 573.7 | 68,160 | 603.5 | 90,100 | 575.7 | 89,590 | 595.0 | | | | |
| 55–64 years | 11,280 | 1,351.4 | 10,980 | 1,327.8 | 105,450 | 1,389.9 | 105,390 | 1,404.9 | 140,530 | 1,388.9 | 141,560 | 1,412.6 | | | | |
| 65–74 years | 21,110 | 3,095.4 | 21,080 | 3,075.6 | 202,670 | 3,248.9 | 206,700 | 3,318.2 | 269,950 | 3,239.9 | 272,540 | 3,272.2 | | | | |
| 75–84 years | 25,320 | 6,846.3 | 24,210 | 6,766.7 | 242,970 | 7,287.2 | 240,570 | 7,477.1 | 321,550 | 7,242.1 | 317,110 | 7,397.0 | | | | |
| 85 years and over | 13,890 | 15,941.5 | 13,400 | 15,952.4 | 140,980 | 17,991.8 | 135,330 | 17,934.1 | 187,460 | 17,990.4 | 178,300 | 17,741.3 | | | | |
| Not stated | 20 | ... | 40 | ... | 520 | ... | 510 | ... | 660 | ... | 640 | ... | | | | |
| Age-adjusted rate ³ | ... | 608.8 | ... | 611.5 | ... | 630.6 | ... | 651.0 | ... | 631.4 | ... | 646.6 | | | | |
| All races, female¹ | | | | | | | | | | | | | | | | |
| All ages | 89,380 | 802.6 | 87,000 | 785.8 | 855,610 | 843.9 | 853,800 | 850.2 | 1,137,130 | 840.3 | 1,131,160 | 843.0 | | | | |
| Under 1 year | } 1,450 | 62.4 | 1,420 | 61.3 | 9,690 | ² 687.9 | 9,810 | ² 698.9 | 12,810 | ² 680.3 | 13,030 | ² 695.3 | | | | |
| 1–4 years | | | | | 2,030 | 35.6 | 2,260 | 39.2 | 2,660 | 34.9 | 2,990 | 38.7 | | | | |
| 5–14 years | | | | | 2,740 | 19.5 | 2,360 | 17.1 | 3,580 | 19.1 | 3,260 | 17.6 | | | | |
| 15–24 years | | | | | 650 | 45.0 | 770 | 53.2 | 6,240 | 47.3 | 6,190 | 47.0 | 8,150 | 46.4 | 8,190 | 46.6 |
| 25–34 years | | | | | 1,480 | 89.6 | 1,290 | 77.0 | 11,690 | 77.1 | 11,970 | 78.2 | 15,610 | 77.0 | 15,930 | 77.8 |
| 35–44 years | 2,760 | 154.1 | 2,690 | 152.2 | 23,220 | 142.7 | 23,570 | 147.5 | 31,400 | 144.6 | 31,120 | 145.9 | | | | |
| 45–54 years | 4,150 | 304.0 | 4,090 | 310.3 | 38,760 | 314.8 | 39,840 | 336.9 | 51,280 | 312.9 | 52,490 | 332.9 | | | | |
| 55–64 years | 7,340 | 798.5 | 7,860 | 861.1 | 70,230 | 840.2 | 70,410 | 849.8 | 93,800 | 841.3 | 93,540 | 844.8 | | | | |
| 65–74 years | 16,290 | 1,922.6 | 15,760 | 1,840.4 | 155,450 | 2,002.6 | 155,680 | 1,997.3 | 204,740 | 1,973.6 | 207,130 | 1,987.6 | | | | |
| 75–84 years | 26,480 | 4,633.0 | 25,420 | 4,517.6 | 251,370 | 4,852.6 | 249,850 | 4,911.8 | 333,940 | 4,836.2 | 332,690 | 4,901.1 | | | | |
| 85 years and over | 28,740 | 13,010.3 | 27,680 | 12,800.2 | 283,930 | 14,215.2 | 281,560 | 14,467.3 | 378,820 | 14,236.0 | 370,410 | 14,279.5 | | | | |
| Not stated | 50 | ... | 30 | ... | 270 | ... | 300 | ... | 340 | ... | 380 | ... | | | | |
| Age-adjusted rate ³ | ... | 368.2 | ... | 366.3 | ... | 382.0 | ... | 387.6 | ... | 380.1 | ... | 385.2 | | | | |
| White | | | | | | | | | | | | | | | | |
| All ages | 155,320 | 861.5 | 151,970 | 846.7 | 1,489,450 | 906.9 | 1,489,210 | 914.2 | 1,982,290 | 904.1 | 1,972,520 | 906.2 | | | | |
| Under 1 year | } 2,380 | 63.3 | 2,210 | 58.8 | 13,740 | ² 611.0 | 14,420 | ² 641.9 | 18,750 | ² 622.9 | 19,470 | ² 647.7 | | | | |
| 1–4 years | | | | | 3,160 | 34.3 | 3,510 | 37.7 | 4,290 | 34.8 | 4,700 | 37.6 | | | | |
| 5–14 years | | | | | 4,770 | 20.9 | 4,340 | 19.2 | 6,520 | 21.4 | 5,750 | 19.1 | | | | |
| 15–24 years | | | | | 2,260 | 96.2 | 2,260 | 95.9 | 17,830 | 83.2 | 18,160 | 84.6 | 24,190 | 84.6 | 24,370 | 85.0 |
| 25–34 years | | | | | 3,320 | 123.7 | 3,240 | 118.5 | 28,230 | 114.5 | 31,160 | 124.5 | 37,900 | 114.8 | 41,670 | 124.4 |
| 35–44 years | 5,580 | 188.7 | 6,320 | 216.5 | 52,480 | 195.2 | 54,620 | 206.9 | 70,840 | 197.4 | 72,480 | 205.7 | | | | |
| 45–54 years | 8,990 | 394.9 | 8,660 | 393.2 | 80,840 | 393.4 | 82,830 | 418.8 | 107,980 | 394.8 | 108,980 | 413.2 | | | | |
| 55–64 years | 14,980 | 990.1 | 15,250 | 1,014.8 | 142,780 | 1,037.5 | 142,560 | 1,044.4 | 190,350 | 1,036.9 | 190,800 | 1,046.1 | | | | |
| 65–74 years | 32,460 | 2,399.8 | 31,830 | 2,328.6 | 310,990 | 2,508.9 | 312,460 | 2,510.5 | 411,990 | 2,486.8 | 414,020 | 2,487.8 | | | | |
| 75–84 years | 46,260 | 5,419.9 | 44,580 | 5,341.6 | 443,940 | 5,750.0 | 440,800 | 5,853.9 | 588,820 | 5,723.9 | 584,490 | 5,818.7 | | | | |
| 85 years and over | 39,050 | 13,934.2 | 37,570 | 13,751.5 | 390,120 | 15,417.8 | 383,730 | 15,613.2 | 519,910 | 15,432.2 | 505,030 | 15,416.1 | | | | |
| Not stated | 40 | ... | 50 | ... | 570 | ... | 620 | ... | 750 | ... | 770 | ... | | | | |
| Age-adjusted rate ³ | ... | 453.7 | ... | 452.0 | ... | 469.4 | ... | 479.2 | ... | 468.9 | ... | 476.4 | | | | |

See footnotes at end of table.

Table 5. Provisional number of deaths and death rates, by age, race, and sex, and age-adjusted death rates by race and sex: United States, September 1995 and 1996, cumulative figures 1995 and 1996, and 12 months ending with September 1995 and 1996—Con.

[Data are provisional, estimated from a 10-percent sample of deaths. Age-specific rates on an annual basis per 100,000 population in specified group; age-adjusted rates per 100,000 U.S. standard million population; see [Technical notes](#). Because of rounding of estimates, figures may not add to totals. For method of computation and information on standard errors of the estimates, see [Technical notes](#)]

| Age, race, and sex | September | | | | January–September | | | | 12 months ending with September | | | | | | | |
|--|-----------|----------|--------|----------|-------------------|----------------------|---------|----------------------|---------------------------------|----------------------|---------|----------------------|--------|-------|--------|-------|
| | 1996 | | 1995 | | 1996 | | 1995 | | 1996 | | 1995 | | | | | |
| | Number | Rate | Number | Rate | Number | Rate | Number | Rate | Number | Rate | Number | Rate | | | | |
| White male | | | | | | | | | | | | | | | | |
| All ages | 78,240 | 884.1 | 76,640 | 870.4 | 745,540 | 924.9 | 748,040 | 936.2 | 993,550 | 923.3 | 989,820 | 927.1 | | | | |
| Under 1 year | } 1,350 | 69.9 | 1,340 | 69.5 | 7,480 | ² 648.9 | 8,080 | ² 700.7 | 10,400 | ² 673.1 | 10,950 | ² 710.1 | | | | |
| 1–4 years | | | | | 1,890 | 40.0 | 2,120 | 44.3 | 2,580 | 40.9 | 2,820 | 44.0 | | | | |
| 5–14 years | | | | | 2,810 | 24.1 | 2,620 | 22.6 | 3,890 | 24.8 | 3,390 | 21.9 | | | | |
| 15–24 years | | | | | 1,710 | 141.9 | 1,630 | 134.9 | 13,140 | 119.7 | 13,650 | 124.0 | 17,990 | 122.6 | 18,420 | 125.2 |
| 25–34 years | | | | | 2,270 | 167.6 | 2,410 | 174.6 | 20,360 | 163.5 | 23,160 | 183.2 | 27,500 | 165.1 | 30,880 | 182.6 |
| 35–44 years | 3,650 | 246.0 | 4,470 | 305.3 | 36,160 | 268.2 | 38,560 | 291.2 | 48,780 | 271.0 | 51,240 | 290.0 | | | | |
| 45–54 years | 5,970 | 530.9 | 5,560 | 511.2 | 51,820 | 510.7 | 52,660 | 539.5 | 69,530 | 514.8 | 69,120 | 530.9 | | | | |
| 55–64 years | 9,270 | 1,273.1 | 9,000 | 1,245.7 | 86,200 | 1,302.2 | 86,650 | 1,320.9 | 115,050 | 1,302.8 | 116,400 | 1,328.3 | | | | |
| 65–74 years | 18,520 | 3,047.1 | 18,170 | 2,968.2 | 177,240 | 3,185.3 | 179,660 | 3,226.6 | 235,740 | 3,171.1 | 237,440 | 3,188.8 | | | | |
| 75–84 years | 22,870 | 6,793.6 | 21,820 | 6,702.3 | 219,300 | 7,225.9 | 217,280 | 7,423.0 | 290,590 | 7,191.0 | 286,200 | 7,336.6 | | | | |
| 85 years and over | 12,610 | 16,008.5 | 12,200 | 16,099.1 | 128,740 | 18,174.1 | 123,170 | 18,091.6 | 170,990 | 18,151.8 | 162,430 | 17,908.5 | | | | |
| Not stated | 10 | ... | 40 | ... | 390 | ... | 420 | ... | 510 | ... | 520 | ... | | | | |
| Age-adjusted rate ³ | ... | 578.4 | ... | 576.4 | ... | 596.6 | ... | 614.6 | ... | 597.5 | ... | 610.4 | | | | |
| White female | | | | | | | | | | | | | | | | |
| All ages | 77,080 | 839.8 | 75,330 | 823.8 | 743,910 | 889.5 | 741,170 | 893.0 | 988,730 | 885.6 | 982,700 | 886.0 | | | | |
| Under 1 year | } 1,030 | 56.2 | 880 | 48.1 | 6,260 | ² 571.0 | 6,340 | ² 578.1 | 8,350 | ² 570.0 | 8,520 | ² 582.0 | | | | |
| 1–4 years | | | | | 1,270 | 27.9 | 1,380 | 30.4 | 1,720 | 28.7 | 1,870 | 30.7 | | | | |
| 5–14 years | | | | | 1,960 | 17.6 | 1,730 | 15.6 | 2,630 | 17.7 | 2,370 | 16.1 | | | | |
| 15–24 years | | | | | 560 | 49.0 | 630 | 54.9 | 4,690 | 45.0 | 4,510 | 43.1 | 6,200 | 44.5 | 5,950 | 42.6 |
| 25–34 years | | | | | 1,040 | 78.2 | 830 | 61.3 | 7,870 | 64.4 | 8,000 | 64.6 | 10,390 | 63.6 | 10,790 | 65.1 |
| 35–44 years | 1,930 | 130.9 | 1,850 | 127.1 | 16,320 | 121.8 | 16,060 | 122.0 | 22,050 | 123.3 | 21,230 | 120.8 | | | | |
| 45–54 years | 3,020 | 262.2 | 3,100 | 278.0 | 29,020 | 279.2 | 30,170 | 301.5 | 38,450 | 277.8 | 39,860 | 298.5 | | | | |
| 55–64 years | 5,710 | 727.5 | 6,240 | 799.7 | 56,580 | 792.6 | 55,910 | 788.5 | 75,310 | 790.6 | 74,400 | 785.1 | | | | |
| 65–74 years | 13,940 | 1,871.5 | 13,660 | 1,809.8 | 133,750 | 1,957.8 | 132,800 | 1,931.1 | 176,240 | 1,929.7 | 176,580 | 1,920.2 | | | | |
| 75–84 years | 23,390 | 4,525.2 | 22,760 | 4,471.4 | 224,640 | 4,794.0 | 223,520 | 4,855.8 | 298,230 | 4,774.7 | 298,280 | 4,854.8 | | | | |
| 85 years and over | 26,440 | 13,123.2 | 25,370 | 12,850.5 | 261,370 | 14,347.2 | 260,550 | 14,663.7 | 348,920 | 14,376.6 | 342,600 | 14,461.8 | | | | |
| Not stated | 30 | ... | 10 | ... | 180 | ... | 200 | ... | 240 | ... | 250 | ... | | | | |
| Age-adjusted rate ³ | ... | 347.8 | ... | 346.5 | ... | 363.2 | ... | 365.8 | ... | 361.3 | ... | 364.0 | | | | |
| Black | | | | | | | | | | | | | | | | |
| All ages | 22,180 | 802.9 | 22,430 | 821.0 | 212,170 | 845.2 | 215,840 | 872.5 | 283,370 | 846.0 | 285,050 | 862.8 | | | | |
| Under 1 year | } 950 | 127.2 | 1,000 | 134.9 | 6,630 | ² 1,407.3 | 6,810 | ² 1,459.7 | 8,760 | ² 1,390.5 | 9,180 | ² 1,478.3 | | | | |
| 1–4 years | | | | | 1,310 | 71.1 | 1,480 | 79.0 | 1,680 | 68.3 | 1,970 | 79.2 | | | | |
| 5–14 years | | | | | 1,570 | 34.8 | 1,370 | 30.7 | 1,970 | 33.0 | 1,830 | 31.1 | | | | |
| 15–24 years | | | | | 610 | 135.6 | 570 | 127.0 | 6,540 | 159.6 | 6,560 | 161.1 | 8,580 | 156.9 | 9,110 | 167.6 |
| 25–34 years | | | | | 1,060 | 239.3 | 1,340 | 301.1 | 10,590 | 261.4 | 11,710 | 288.9 | 14,740 | 272.2 | 15,350 | 282.7 |
| 35–44 years | 2,080 | 476.2 | 2,140 | 499.8 | 18,480 | 466.7 | 20,440 | 529.2 | 25,170 | 476.7 | 26,640 | 517.0 | | | | |
| 45–54 years | 2,340 | 829.4 | 2,480 | 921.6 | 22,340 | 881.1 | 22,330 | 929.1 | 29,550 | 876.1 | 29,360 | 916.4 | | | | |
| 55–64 years | 3,180 | 1,794.4 | 3,070 | 1,750.3 | 29,050 | 1,804.0 | 29,140 | 1,836.9 | 38,880 | 1,810.9 | 38,890 | 1,835.3 | | | | |
| 65–74 years | 4,280 | 3,193.6 | 4,400 | 3,308.6 | 41,290 | 3,384.6 | 44,070 | 3,654.9 | 54,890 | 3,371.6 | 57,930 | 3,595.9 | | | | |
| 75–84 years | 4,590 | 6,619.1 | 4,380 | 6,405.0 | 43,810 | 6,961.2 | 43,000 | 6,962.2 | 58,230 | 6,940.4 | 56,680 | 6,878.6 | | | | |
| 85 years and over | 3,060 | 13,145.1 | 3,030 | 13,308.7 | 30,340 | 14,421.3 | 28,750 | 14,060.9 | 40,660 | 14,573.5 | 37,860 | 13,919.1 | | | | |
| Not stated | 30 | ... | 20 | ... | 220 | ... | 170 | ... | 250 | ... | 230 | ... | | | | |
| Age-adjusted rate ³ | ... | 706.3 | ... | 729.3 | ... | 741.4 | ... | 775.9 | ... | 742.7 | ... | 768.4 | | | | |
| Black male | | | | | | | | | | | | | | | | |
| All ages | 11,550 | 881.1 | 12,130 | 936.1 | 113,570 | 953.5 | 115,650 | 985.7 | 152,080 | 956.8 | 153,060 | 976.9 | | | | |
| Under 1 year | } 580 | 153.0 | 500 | 132.9 | 3,530 | ² 1,477.9 | 3,600 | ² 1,514.1 | 4,690 | ² 1,470.2 | 5,000 | ² 1,587.3 | | | | |
| 1–4 years | | | | | 660 | 70.6 | 730 | 77.3 | 860 | 69.0 | 1,000 | 79.2 | | | | |
| 5–14 years | | | | | 950 | 42.2 | 890 | 40.3 | 1,200 | 39.6 | 1,180 | 39.6 | | | | |
| 15–24 years | | | | | 520 | 230.9 | 450 | 200.5 | 5,220 | 254.0 | 5,140 | 253.1 | 6,920 | 252.9 | 7,240 | 266.5 |
| 25–34 years | | | | | 690 | 329.1 | 900 | 427.6 | 7,230 | 377.0 | 8,090 | 420.8 | 10,160 | 396.3 | 10,640 | 414.3 |
| 35–44 years | 1,350 | 661.4 | 1,370 | 685.7 | 12,140 | 656.8 | 13,520 | 749.2 | 16,650 | 675.2 | 17,600 | 732.1 | | | | |
| 45–54 years | 1,440 | 1,126.1 | 1,620 | 1,328.2 | 14,040 | 1,221.9 | 13,910 | 1,275.1 | 18,490 | 1,210.1 | 18,400 | 1,267.2 | | | | |
| 55–64 years | 1,730 | 2,245.3 | 1,730 | 2,270.6 | 16,980 | 2,426.0 | 16,440 | 2,386.8 | 22,540 | 2,415.9 | 21,990 | 2,387.6 | | | | |
| 65–74 years | 2,170 | 3,870.5 | 2,510 | 4,530.9 | 22,210 | 4,360.0 | 23,530 | 4,690.2 | 29,830 | 4,386.8 | 30,630 | 4,571.6 | | | | |
| 75–84 years | 1,970 | 7,752.9 | 2,070 | 8,311.9 | 20,280 | 8,793.0 | 19,890 | 8,855.9 | 26,730 | 8,678.6 | 26,450 | 8,846.2 | | | | |
| 85 years and over | 1,080 | 16,068.3 | 990 | 15,056.2 | 10,190 | 16,808.9 | 9,830 | 16,615.3 | 13,860 | 17,325.0 | 12,820 | 16,227.8 | | | | |
| Not stated | 10 | ... | — | ... | 130 | ... | 80 | ... | 150 | ... | 110 | ... | | | | |
| Age-adjusted rate ³ | ... | 902.2 | ... | 976.0 | ... | 981.7 | ... | 1,021.9 | ... | 985.1 | ... | 1,014.1 | | | | |

See footnotes at end of table.

Table 5. Provisional number of deaths and death rates, by age, race, and sex, and age-adjusted death rates by race and sex: United States, September 1995 and 1996, cumulative figures 1995 and 1996, and 12 months ending with September 1995 and 1996—Con.

[Data are provisional, estimated from a 10-percent sample of deaths. Age-specific rates on an annual basis per 100,000 population in specified group; age-adjusted rates per 100,000 U.S. standard million population; see [Technical notes](#). Because of rounding of estimates, figures may not add to totals. For method of computation and information on standard errors of the estimates, see [Technical notes](#)]

| Age, race, and sex | September | | | | January–September | | | | 12 months ending with September | | | |
|--|-----------|----------|--------|----------|-------------------|----------------------|---------|----------------------|---------------------------------|----------------------|---------|----------------------|
| | 1996 | | 1995 | | 1996 | | 1995 | | 1996 | | 1995 | |
| | Number | Rate | Number | Rate | Number | Rate | Number | Rate | Number | Rate | Number | Rate |
| Black female | | | | | | | | | | | | |
| All ages | 10,630 | 732.3 | 10,300 | 717.2 | 98,600 | 747.4 | 100,190 | 770.5 | 131,290 | 745.8 | 131,990 | 760.0 |
| Under 1 year | } 370 | 100.5 | 500 | 136.9 | 3,100 | ² 1,330.5 | 3,210 | ² 1,399.4 | 4,070 | ² 1,308.7 | 4,180 | ² 1,366.0 |
| 1–4 years | | | | | 650 | 71.5 | 750 | 82.9 | 820 | 67.7 | 980 | 79.9 |
| 5–14 years | | | | | 620 | 28.1 | 480 | 22.1 | 770 | 26.2 | 650 | 22.5 |
| 15–24 years | | | | | 100 | * | 120 | 53.4 | 1,320 | 65.4 | 1,420 | 70.2 |
| 25–34 years | 370 | 158.6 | 440 | 187.6 | 3,360 | 157.0 | 3,630 | 170.1 | 4,570 | 160.2 | 4,720 | 164.9 |
| 35–44 years | 730 | 313.7 | 780 | 341.6 | 6,340 | 300.5 | 6,920 | 336.3 | 8,520 | 302.8 | 9,040 | 328.8 |
| 45–54 years | 900 | 583.4 | 850 | 577.7 | 8,300 | 598.0 | 8,420 | 640.0 | 11,060 | 599.5 | 10,970 | 626.1 |
| 55–64 years | 1,450 | 1,447.6 | 1,350 | 1,360.8 | 12,070 | 1,325.7 | 12,700 | 1,415.7 | 16,340 | 1,346.0 | 16,900 | 1,410.7 |
| 65–74 years | 2,110 | 2,706.8 | 1,890 | 2,435.9 | 19,080 | 2,684.0 | 20,540 | 2,917.1 | 25,060 | 2,643.5 | 27,300 | 2,901.2 |
| 75–84 years | 2,620 | 5,963.4 | 2,310 | 5,312.8 | 23,530 | 5,901.4 | 23,110 | 5,873.7 | 31,510 | 5,934.1 | 30,240 | 5,760.0 |
| 85 years and over | 1,970 | 11,898.0 | 2,040 | 12,599.0 | 20,150 | 13,449.8 | 18,920 | 13,026.9 | 26,810 | 13,472.4 | 25,030 | 12,968.9 |
| Not stated | 20 | ... | 20 | ... | 90 | ... | 90 | ... | 100 | ... | 120 | ... |
| Age-adjusted rate ³ | ... | 552.6 | ... | 541.7 | ... | 555.3 | ... | 585.8 | ... | 554.8 | ... | 578.1 |

* Figure does not meet standard of reliability or precision.

... Category not applicable.

– Quantity zero.

¹Includes races other than white and black.

²Death rates for "Under 1 year" (based on population estimates) differ from infant mortality rates (based on live births); see [table 9](#) for infant mortality rates.

³For method of computation, see [Technical notes](#).

NOTES: Figures include all revisions received from the States. Cumulative and 12-month figures for the current year reflect revisions received for previous months, and figures for earlier years may differ from those previously published.

Table 6. Provisional number of deaths and death rates for 72 selected causes, Human immunodeficiency virus infection, and Alzheimer's disease: United States, September 1995 and 1996, cumulative figures 1995 and 1996, and 12 months ending with September 1995 and 1996

[Data are provisional, estimated from a 10-percent sample of deaths. Rates on an annual basis per 100,000 estimated population. Because of rounding of estimates, figures may not add to totals. For method of computation and information on standard errors of the estimates, see [Technical notes](#). For explanation of asterisks preceding cause-of-death categories, see [Technical notes](#)]

| Cause of death (Based on the Ninth Revision, International Classification of Diseases, 1975) | September | | September | | January–September | | January–September | | 12 months ending with September | | 12 months ending with September | |
|--|-----------|-------|-----------|-------|-------------------|-------|-------------------|-------|---------------------------------|-------|---------------------------------|-------|
| | 1996 | | 1995 | | 1996 | | 1995 | | 1996 | | 1995 | |
| | Number | Rate | Number | Rate | Number | Rate | Number | Rate | Number | Rate | Number | Rate |
| All causes | 181,000 | 832.3 | 178,000 | 821.2 | 1,731,000 | 873.3 | 1,735,000 | 883.9 | 2,305,000 | 871.4 | 2,296,000 | 875.9 |
| Shigellosis and amebiasis | — | * | — | * | — | * | — | * | — | * | — | * |
| Certain other intestinal infections | 90 | * | 40 | * | 670 | 0.3 | 490 | 0.2 | 810 | 0.3 | 610 | 0.2 |
| Tuberculosis | 90 | * | 120 | 0.5 | 690 | 0.3 | 1,030 | 0.5 | 1,030 | 0.4 | 1,350 | 0.5 |
| Tuberculosis of respiratory system | 80 | * | 100 | * | 560 | 0.3 | 780 | 0.4 | 840 | 0.3 | 1,010 | 0.4 |
| Other tuberculosis | 10 | * | 20 | * | 140 | 0.1 | 250 | 0.1 | 190 | 0.1 | 340 | 0.1 |
| Whooping cough | — | * | — | * | 10 | * | — | * | 20 | * | — | * |
| Streptococcal sore throat, scarlatina, and erysipelas | — | * | — | * | — | * | 10 | * | — | * | 10 | * |
| Meningococcal infection | 30 | * | — | * | 220 | 0.1 | 280 | 0.1 | 240 | 0.1 | 350 | 0.1 |
| Septicemia | 1,510 | 6.9 | 1,430 | 6.6 | 16,100 | 8.1 | 16,040 | 8.2 | 21,260 | 8.0 | 20,730 | 7.9 |
| Acute poliomyelitis | — | * | — | * | — | * | — | * | — | * | — | * |
| Measles | — | * | — | * | — | * | — | * | — | * | — | * |
| Viral hepatitis | 310 | 1.4 | 330 | 1.5 | 2,760 | 1.4 | 2,620 | 1.3 | 3,660 | 1.4 | 3,390 | 1.3 |
| Syphilis | 20 | * | 20 | * | 30 | * | 120 | 0.1 | 40 | * | 130 | 0.0 |
| All other infectious and parasitic diseases ¹ | 2,750 | 12.6 | 4,140 | 19.1 | 29,690 | 15.0 | 37,350 | 19.0 | 41,350 | 15.6 | 49,140 | 18.7 |
| Malignant neoplasms, including neoplasms of lymphatic and hematopoietic tissues | 46,160 | 212.0 | 44,450 | 205.4 | 405,830 | 204.7 | 402,970 | 205.3 | 539,310 | 203.9 | 538,030 | 205.2 |
| Malignant neoplasms of lip, oral cavity, and pharynx | 770 | 3.5 | 730 | 3.4 | 5,900 | 3.0 | 6,060 | 3.1 | 7,820 | 3.0 | 7,970 | 3.0 |
| Malignant neoplasms of digestive organs and peritoneum | 10,620 | 48.8 | 10,140 | 46.9 | 94,140 | 47.5 | 93,850 | 47.8 | 125,540 | 47.5 | 125,640 | 47.9 |
| Malignant neoplasms of respiratory and intrathoracic organs | 13,730 | 63.1 | 13,010 | 60.1 | 118,770 | 59.9 | 116,210 | 59.2 | 157,490 | 59.5 | 154,580 | 59.0 |
| Malignant neoplasm of breast | 3,580 | 16.4 | 3,670 | 17.0 | 33,130 | 16.7 | 33,020 | 16.8 | 44,120 | 16.7 | 44,240 | 16.9 |
| Malignant neoplasms of genital organs | 5,010 | 23.0 | 5,090 | 23.5 | 44,970 | 22.7 | 45,780 | 23.3 | 59,990 | 22.7 | 61,170 | 23.3 |
| Malignant neoplasms of urinary organs | 1,970 | 9.0 | 1,910 | 8.8 | 17,150 | 8.6 | 17,530 | 8.9 | 22,700 | 8.6 | 22,900 | 8.7 |
| Malignant neoplasms of all other and unspecified sites | 5,520 | 25.4 | 5,640 | 26.1 | 49,670 | 25.1 | 49,570 | 25.2 | 65,690 | 24.8 | 66,560 | 25.4 |
| Leukemia | 1,640 | 7.5 | 1,520 | 7.0 | 15,550 | 7.8 | 14,950 | 7.6 | 20,220 | 7.6 | 19,770 | 7.5 |
| Other malignant neoplasms of lymphatic and hematopoietic tissues | 3,330 | 15.3 | 2,730 | 12.6 | 26,550 | 13.4 | 25,990 | 13.2 | 35,720 | 13.5 | 35,200 | 13.4 |
| Benign neoplasms, carcinoma in situ, and neoplasms of uncertain behavior and of unspecified nature | 550 | 2.5 | 550 | 2.5 | 5,870 | 3.0 | 6,430 | 3.3 | 7,830 | 3.0 | 8,230 | 3.1 |
| Diabetes mellitus | 4,510 | 20.7 | 4,510 | 20.8 | 45,480 | 22.9 | 44,100 | 22.5 | 59,720 | 22.6 | 58,140 | 22.2 |
| Nutritional deficiencies | 300 | 1.4 | 270 | 1.2 | 2,930 | 1.5 | 2,760 | 1.4 | 4,000 | 1.5 | 3,550 | 1.4 |
| Anemias | 360 | 1.6 | 320 | 1.5 | 2,930 | 1.5 | 3,100 | 1.6 | 4,110 | 1.6 | 4,160 | 1.6 |
| Meningitis | 60 | * | 40 | * | 450 | 0.2 | 650 | 0.3 | 590 | 0.2 | 940 | 0.4 |
| Major cardiovascular diseases | 72,460 | 332.8 | 71,010 | 328.2 | 704,980 | 355.7 | 708,000 | 360.8 | 939,500 | 355.1 | 936,180 | 357.1 |
| Diseases of heart | 55,250 | 253.8 | 54,850 | 253.5 | 546,910 | 275.9 | 549,520 | 280.0 | 728,260 | 275.3 | 726,300 | 277.0 |
| Rheumatic fever and rheumatic heart disease | 280 | 1.3 | 390 | 1.8 | 3,750 | 1.9 | 4,000 | 2.0 | 4,790 | 1.8 | 5,270 | 2.0 |
| Hypertensive heart disease | 2,200 | 10.1 | 1,830 | 8.5 | 19,900 | 10.0 | 18,460 | 9.4 | 25,930 | 9.8 | 23,860 | 9.1 |
| Hypertensive heart and renal disease | 160 | 0.7 | 110 | 0.5 | 1,650 | 0.8 | 1,720 | 0.9 | 2,270 | 0.9 | 2,380 | 0.9 |
| Ischemic heart disease | 36,000 | 165.3 | 35,490 | 164.0 | 354,260 | 178.7 | 359,160 | 183.0 | 472,520 | 178.6 | 474,970 | 181.2 |
| Acute myocardial infarction | 16,310 | 74.9 | 16,530 | 76.4 | 160,430 | 80.9 | 163,790 | 83.5 | 213,830 | 80.8 | 218,390 | 83.3 |
| Other acute and subacute forms of ischemic heart disease | 130 | 0.6 | 190 | 0.9 | 1,930 | 1.0 | 1,920 | 1.0 | 2,600 | 1.0 | 2,610 | 1.0 |
| Angina pectoris | 30 | * | 70 | * | 540 | 0.3 | 540 | 0.3 | 730 | 0.3 | 760 | 0.3 |
| Old myocardial infarction and other forms of chronic ischemic heart disease | 19,530 | 89.7 | 18,710 | 86.5 | 191,360 | 96.6 | 192,910 | 98.3 | 255,350 | 96.5 | 253,210 | 96.6 |
| Other diseases of endocardium | 1,250 | 5.7 | 1,070 | 4.9 | 12,230 | 6.2 | 11,550 | 5.9 | 16,210 | 6.1 | 15,220 | 5.8 |
| All other forms of heart disease | 15,370 | 70.6 | 15,950 | 73.7 | 155,120 | 78.3 | 154,640 | 78.8 | 206,550 | 78.1 | 204,590 | 78.0 |
| Hypertension with or without renal disease | 1,020 | 4.7 | 900 | 4.1 | 8,930 | 4.5 | 9,440 | 4.8 | 11,960 | 4.5 | 12,080 | 4.6 |
| Cerebrovascular diseases | 12,550 | 57.6 | 11,990 | 55.4 | 117,990 | 59.5 | 117,510 | 59.9 | 157,230 | 59.4 | 155,740 | 59.4 |
| Intracerebral and other intracranial hemorrhage | 2,040 | 9.4 | 1,460 | 6.7 | 17,280 | 8.7 | 16,270 | 8.3 | 22,710 | 8.6 | 21,860 | 8.3 |
| Cerebral thrombosis and unspecified occlusion of cerebral arteries | 1,000 | 4.6 | 960 | 4.4 | 9,020 | 4.5 | 10,060 | 5.1 | 12,370 | 4.7 | 13,660 | 5.2 |
| Cerebral embolism | 50 | * | 50 | * | 450 | 0.2 | 450 | 0.2 | 640 | 0.2 | 640 | 0.2 |
| All other and late effects of cerebrovascular diseases | 9,460 | 43.4 | 9,530 | 44.0 | 91,240 | 46.0 | 90,740 | 46.2 | 121,510 | 45.9 | 119,590 | 45.6 |

See footnotes at end of table.

Table 6. Provisional number of deaths and death rates for 72 selected causes, Human immunodeficiency virus infection, and Alzheimer's disease: United States, September 1995 and 1996, cumulative figures 1995 and 1996, and 12 months ending with September 1995 and 1996—Con.

[Data are provisional, estimated from a 10-percent sample of deaths. Rates on an annual basis per 100,000 estimated population. Because of rounding of estimates, figures may not add to totals. For method of computation and information on standard errors of the estimates, see [Technical notes](#). For explanation of asterisks preceding cause-of-death categories, see [Technical notes](#)]

| Cause of death (Based on the Ninth Revision, International Classification of Diseases, 1975) | September | | September | | January–September | | January–September | | 12 months ending with September | | 12 months ending with September | | |
|--|----------------------|--------|-----------|--------|-------------------|---------|-------------------|---------|---------------------------------|---------|---------------------------------|---------|------|
| | 1996 | | 1995 | | 1996 | | 1995 | | 1996 | | 1995 | | |
| | Number | Rate | Number | Rate | Number | Rate | Number | Rate | Number | Rate | Number | Rate | |
| Cerebrovascular diseases—Con. | | | | | | | | | | | | | |
| Atherosclerosis | .440 | 1,090 | 5.0 | 1,160 | 5.4 | 11,440 | 5.8 | 12,260 | 6.2 | 15,580 | 5.9 | 16,410 | 6.3 |
| Other diseases of arteries, arterioles, and capillaries | .441–448 | 2,550 | 11.7 | 2,110 | 9.7 | 19,710 | 9.9 | 19,250 | 9.8 | 26,470 | 10.0 | 25,650 | 9.8 |
| Acute bronchitis and bronchiolitis | .466 | — | * | 30 | * | 340 | 0.2 | 450 | 0.2 | 430 | 0.2 | 530 | 0.2 |
| Pneumonia and influenza | .480–487 | 5,350 | 24.6 | 5,220 | 24.1 | 60,840 | 30.7 | 60,650 | 30.9 | 80,360 | 30.4 | 78,710 | 30.0 |
| Pneumonia | .480–486 | 5,350 | 24.6 | 5,210 | 24.1 | 60,390 | 30.5 | 60,250 | 30.7 | 79,830 | 30.2 | 78,300 | 29.9 |
| Influenza | .487 | — | * | 10 | * | 450 | 0.2 | 410 | 0.2 | 520 | 0.2 | 420 | 0.2 |
| Chronic obstructive pulmonary diseases and allied conditions | .490–496 | 7,430 | 34.1 | 7,060 | 32.6 | 80,380 | 40.6 | 79,690 | 40.6 | 104,240 | 39.4 | 103,130 | 39.3 |
| Bronchitis, chronic and unspecified | .490–491 | 150 | 0.7 | 130 | 0.6 | 2,350 | 1.2 | 2,280 | 1.2 | 3,040 | 1.1 | 3,140 | 1.2 |
| Emphysema | .492 | 1,160 | 5.3 | 1,070 | 4.9 | 12,860 | 6.5 | 13,480 | 6.9 | 16,790 | 6.3 | 17,580 | 6.7 |
| Asthma | .493 | 410 | 1.9 | 380 | 1.8 | 3,860 | 1.9 | 4,240 | 2.2 | 5,140 | 1.9 | 5,400 | 2.1 |
| Other chronic obstructive pulmonary diseases and allied conditions | .494–496 | 5,700 | 26.2 | 5,470 | 25.3 | 61,310 | 30.9 | 59,680 | 30.4 | 79,270 | 30.0 | 77,010 | 29.4 |
| Ulcer of stomach and duodenum | .531–533 | 370 | 1.7 | 450 | 2.1 | 3,710 | 1.9 | 4,480 | 2.3 | 5,120 | 1.9 | 5,760 | 2.2 |
| Appendicitis | .540–543 | 30 | * | 30 | * | 350 | 0.2 | 330 | 0.2 | 420 | 0.2 | 430 | 0.2 |
| Hernia of abdominal cavity and intestinal obstruction without mention of hernia | .550–553,560 | 530 | 2.4 | 470 | 2.2 | 4,750 | 2.4 | 4,700 | 2.4 | 6,020 | 2.3 | 6,180 | 2.4 |
| Chronic liver disease and cirrhosis | .571 | 1,900 | 8.7 | 2,060 | 9.5 | 18,080 | 9.1 | 19,100 | 9.7 | 24,070 | 9.1 | 25,800 | 9.8 |
| Cholelithiasis and other disorders of gallbladder | .574–575 | 210 | 1.0 | 190 | 0.9 | 2,030 | 1.0 | 1,990 | 1.0 | 2,730 | 1.0 | 2,550 | 1.0 |
| Nephritis and nephrotic syndrome, and nephrosis | .580–589 | 1,930 | 8.9 | 1,820 | 8.4 | 19,810 | 10.0 | 19,330 | 9.8 | 26,120 | 9.9 | 25,930 | 9.9 |
| Acute glomerulonephritis and nephrotic syndrome | .580–581 | 20 | * | 10 | * | 140 | 0.1 | 220 | 0.1 | 200 | 0.1 | 250 | 0.1 |
| Chronic glomerulonephritis, nephritis and nephropathy, not specified as acute or chronic, and renal sclerosis, unspecified | .582–583,587 | 180 | 0.8 | 90 | * | 1,300 | 0.7 | 900 | 0.5 | 1,740 | 0.7 | 1,360 | 0.5 |
| Renal failure, disorders resulting from impaired renal function, and small kidney of unknown cause | .584–586,588–589 | 1,730 | 7.9 | 1,730 | 8.0 | 18,370 | 9.3 | 18,200 | 9.3 | 24,180 | 9.1 | 24,320 | 9.3 |
| Infections of kidney | .590 | 60 | * | 60 | * | 700 | 0.3 | 620 | 0.3 | 810 | 0.3 | 860 | 0.3 |
| Hyperplasia of prostate | .600 | 60 | * | 50 | * | 340 | 0.2 | 330 | 0.2 | 440 | 0.2 | 480 | 0.2 |
| Complications of pregnancy, childbirth, and the puerperium | .630–676 | 30 | * | 50 | * | 220 | 0.1 | 230 | 0.1 | 310 | 0.1 | 290 | 0.1 |
| Pregnancy with abortive outcome | .630–638 | — | * | — | * | 20 | * | 10 | * | 30 | * | 10 | * |
| Other complications of pregnancy, childbirth, and the puerperium | .640–676 | 30 | * | 50 | * | 200 | 0.1 | 220 | 0.1 | 280 | 0.1 | 280 | 0.1 |
| Congenital anomalies | .740–759 | 1,040 | 4.8 | 870 | 4.0 | 8,720 | 4.4 | 8,400 | 4.3 | 11,870 | 4.5 | 11,480 | 4.4 |
| Certain conditions originating in the perinatal period | .760–779 | 1,020 | 4.7 | 1,060 | 4.9 | 9,680 | 4.9 | 10,230 | 5.2 | 12,850 | 4.9 | 13,700 | 5.2 |
| Birth trauma, intrauterine hypoxia, birth asphyxia, and respiratory distress syndrome | .767–769 | 130 | 0.6 | 110 | 0.5 | 1,500 | 0.7 | 1,480 | 0.7 | 2,000 | 0.8 | 2,010 | 0.8 |
| Other conditions originating in the perinatal period | .760–766,770–779 | 890 | 4.1 | 950 | 4.4 | 8,180 | 4.1 | 8,750 | 4.5 | 10,850 | 4.1 | 11,680 | 4.5 |
| Symptoms, signs, and ill-defined conditions | .780–799 | 3,350 | 15.4 | 3,130 | 14.5 | 31,310 | 15.8 | 31,190 | 15.9 | 42,340 | 16.0 | 41,170 | 15.7 |
| All other diseases | .Residual | 16,340 | 75.0 | 15,780 | 72.9 | 162,900 | 82.2 | 158,810 | 80.9 | 217,540 | 82.2 | 210,120 | 80.1 |
| Accidents and adverse effects | .E800–E949 | 7,520 | 34.5 | 7,640 | 35.3 | 67,740 | 34.2 | 66,650 | 34.0 | 90,880 | 34.4 | 88,720 | 33.8 |
| Motor vehicle accidents | .E810–E825 | 3,720 | 17.1 | 3,950 | 18.2 | 32,080 | 16.2 | 31,970 | 16.3 | 43,890 | 16.6 | 42,940 | 16.4 |
| All other accidents and adverse effects | .E800–E807,E826–E949 | 3,800 | 17.4 | 3,690 | 17.0 | 35,660 | 18.0 | 34,690 | 17.7 | 46,990 | 17.8 | 45,780 | 17.5 |
| Suicide | .E950–E959 | 2,710 | 12.4 | 2,500 | 11.5 | 22,840 | 11.5 | 22,840 | 11.6 | 29,830 | 11.3 | 30,630 | 11.7 |
| Homicide and legal intervention | .E960–E978 | 1,910 | 8.8 | 1,750 | 8.1 | 15,680 | 7.9 | 16,620 | 8.5 | 21,440 | 8.1 | 22,410 | 8.5 |
| All other external causes | .E980–E999 | 240 | 1.1 | 120 | 0.5 | 1,820 | 0.9 | 1,740 | 0.9 | 2,350 | 0.9 | 2,450 | 0.9 |
| Human immunodeficiency virus infection ² | *042–*044 | 2,150 | 9.9 | 3,510 | 16.2 | 24,910 | 12.6 | 32,250 | 16.4 | 35,030 | 13.2 | 42,630 | 16.3 |
| Alzheimer's disease | .331.0 | 1,680 | 7.7 | 1,590 | 7.3 | 16,270 | 8.2 | 15,000 | 7.6 | 21,740 | 8.2 | 20,230 | 7.7 |

— Quantity zero. * Figure does not meet standard of reliability or precision; see [Technical notes](#). 0.0 Quantity more than zero, but less than 0.05.

¹Includes data for deaths due to Human immunodeficiency virus infection (categories *042–*044) shown separately below; see [Technical notes](#).

²Included in All other infectious and parasitic diseases shown above.

NOTES: Figures include all revisions received from the States. Cumulative and 12-month figures for the current year reflect revisions received for previous months, and figures for earlier years may differ from those previously published.

Table 7. Provisional number of deaths and death rates for 16 selected subcategories of Malignant neoplasms, including neoplasms of lymphatic and hematopoietic tissues: United States, September 1995 and 1996, cumulative figures 1995 and 1996, and 12 months ending with September 1995 and 1996

[Data are provisional, estimated from a 10-percent sample of deaths. Rates on an annual basis per 100,000 estimated population. Because of rounding of estimates, figures may not add to totals. For method of computation and information on standard errors of the estimates, see [Technical notes](#)]

| Cause of death (Based on the Ninth Revision, International Classification of Diseases, 1975) | September | | | | January–September | | | | 12 months ending with September | | | |
|---|-----------|-------|--------|-------|-------------------|-------|---------|-------|---------------------------------|-------|---------|-------|
| | 1996 | | 1995 | | 1996 | | 1995 | | 1996 | | 1995 | |
| | Number | Rate | Number | Rate | Number | Rate | Number | Rate | Number | Rate | Number | Rate |
| Malignant neoplasms, including neoplasms of lymphatic and hematopoietic tissues ¹140–208 | 46,160 | 212.0 | 44,450 | 205.4 | 405,830 | 204.7 | 402,970 | 205.3 | 539,310 | 203.9 | 538,030 | 205.2 |
| Malignant neoplasm of esophagus150 | 880 | 4.0 | 870 | 4.0 | 8,230 | 4.2 | 7,940 | 4.0 | 10,650 | 4.0 | 10,450 | 4.0 |
| Malignant neoplasm of stomach151 | 1,230 | 5.6 | 1,300 | 6.0 | 9,750 | 4.9 | 10,570 | 5.4 | 13,000 | 4.9 | 14,020 | 5.3 |
| Malignant neoplasms of colon, rectum, rectosigmoid junction, and anus153,154 | 4,660 | 21.4 | 4,290 | 19.8 | 42,550 | 21.5 | 41,880 | 21.3 | 56,510 | 21.4 | 56,600 | 21.6 |
| Malignant neoplasm of pancreas157 | 2,260 | 10.4 | 2,170 | 10.0 | 20,520 | 10.3 | 20,430 | 10.4 | 27,480 | 10.4 | 27,160 | 10.4 |
| Malignant neoplasms of trachea, bronchus, and lung162 | 13,260 | 60.9 | 12,540 | 57.9 | 114,840 | 57.9 | 112,260 | 57.2 | 152,240 | 57.5 | 149,210 | 56.9 |
| Malignant melanoma of skin172 | 580 | 2.7 | 530 | 2.4 | 5,310 | 2.7 | 5,420 | 2.8 | 6,910 | 2.6 | 7,060 | 2.7 |
| Malignant neoplasm of cervix uteri180 | 450 | 2.1 | 420 | 1.9 | 3,300 | 1.7 | 3,490 | 1.8 | 4,580 | 1.7 | 4,540 | 1.7 |
| Malignant neoplasms of body of uterus and of uterus, part unspecified179,182 | 480 | 2.2 | 390 | 1.8 | 4,370 | 2.2 | 4,450 | 2.3 | 6,030 | 2.3 | 5,870 | 2.2 |
| Malignant neoplasm of ovary183.0 | 1,140 | 5.2 | 1,100 | 5.1 | 10,170 | 5.1 | 10,080 | 5.1 | 13,680 | 5.2 | 13,600 | 5.2 |
| Malignant neoplasm of prostate185 | 2,750 | 12.6 | 3,050 | 14.1 | 25,670 | 12.9 | 26,480 | 13.5 | 33,730 | 12.7 | 35,360 | 13.5 |
| Malignant neoplasm of bladder188 | 870 | 4.0 | 950 | 4.4 | 8,430 | 4.2 | 8,730 | 4.4 | 11,230 | 4.2 | 11,220 | 4.3 |
| Malignant neoplasms of kidney and other and unspecified urinary organs189 | 1,090 | 5.0 | 960 | 4.4 | 8,720 | 4.4 | 8,800 | 4.5 | 11,470 | 4.3 | 11,680 | 4.5 |
| Malignant neoplasms of brain and other and unspecified parts of nervous system191,192 | 1,000 | 4.6 | 1,040 | 4.8 | 8,640 | 4.4 | 8,580 | 4.4 | 11,600 | 4.4 | 11,810 | 4.5 |
| Hodgkin's disease201 | 90 | * | 110 | 0.5 | 1,130 | 0.6 | 1,170 | 0.6 | 1,490 | 0.6 | 1,570 | 0.6 |
| Malignant lymphoma other than Hodgkin's disease200,202 | 2,270 | 10.4 | 1,790 | 8.3 | 17,520 | 8.8 | 17,080 | 8.7 | 23,700 | 9.0 | 23,030 | 8.8 |
| Multiple myeloma and other immunoproliferative neoplasms203 | 970 | 4.5 | 830 | 3.8 | 7,900 | 4.0 | 7,730 | 3.9 | 10,530 | 4.0 | 10,600 | 4.0 |

* Figure does not meet standard of reliability or precision; see [Technical notes](#).

¹Includes figures for subcategories not shown below.

NOTES: Figures include all revisions received from the States. Cumulative and 12-month figures for the current year reflect revisions received for previous months, and figures for earlier years may differ from those previously published.

Table 8. Provisional number of deaths and death rates for firearm mortality: United States, September 1995 and 1996, cumulative figures 1995 and 1996, and 12 months ending with September 1995 and 1996

[Data are provisional, estimated from a 10-percent sample of deaths. Rates on an annual basis per 100,000 estimated population. Because of rounding of estimates, figures may not add to totals. For method of computation and information on standard errors of the estimates, see [Technical notes](#)]

| Cause of death (Based on the Ninth Revision, International Classification of Diseases, 1975) | September | | | | January–September | | | | 12 months ending with September | | | |
|--|-----------|------|--------|------|-------------------|------|--------|------|---------------------------------|------|--------|------|
| | 1996 | | 1995 | | 1996 | | 1995 | | 1996 | | 1995 | |
| | Number | Rate | Number | Rate | Number | Rate | Number | Rate | Number | Rate | Number | Rate |
| Injury by firearms.E922,E955.0–E955.4,E965.0–965.4,E970,E985.0–E985.4 | 3,030 | 13.9 | 2,770 | 12.8 | 25,970 | 13.1 | 26,390 | 13.4 | 35,130 | 13.3 | 36,120 | 13.8 |
| Accident caused by firearm missileE922 | 100 | * | 60 | * | 920 | 0.5 | 870 | 0.4 | 1,410 | 0.5 | 1,360 | 0.5 |
| Suicide by firearmsE955.0–E955.4 | 1,580 | 7.2 | 1,530 | 7.1 | 13,910 | 7.0 | 13,710 | 7.0 | 18,170 | 6.9 | 18,580 | 7.1 |
| Homicide and legal intervention by firearms.E965.0–E965.4,E970 | 1,320 | 6.1 | 1,190 | 5.5 | 10,970 | 5.5 | 11,630 | 5.9 | 15,290 | 5.8 | 15,900 | 6.1 |
| Injury by firearms, undetermined whether accidentally or purposely inflicted.E985.0–E985.4 | 30 | * | – | * | 180 | 0.1 | 180 | 0.1 | 250 | 0.1 | 270 | 0.1 |

* Figure does not meet standard of reliability or precision; see [Technical notes](#).

– Quantity zero.

NOTES: Figures include all revisions received from the States. Cumulative and 12-month figures for the current year reflect revisions received for previous months, and figures for earlier years may differ from those previously published.

Table 9. Provisional number of deaths under 1 year and infant mortality rates, by age and for 10 selected causes: United States, September 1995 and 1996, cumulative figures 1995 and 1996, and 12 months ending with September 1995 and 1996

[Data are provisional, estimated from a 10-percent sample of deaths. Rates on an annual basis per 100,000 live births. Because of rounding of estimates, figures may not add to totals. For method of computation and information on standard errors of the estimates, see [Technical notes](#)]

| Age and cause of death (Based on the Ninth Revision, International Classification of Diseases, 1975) | September | | January–September | | | | 12 months ending with September | | | | | |
|--|-----------|-------|-------------------|-------|--------|-------|---------------------------------|-------|--------|-------|--------|-------|
| | 1996 | | 1995 | | 1996 | | 1995 | | 1996 | | 1995 | |
| | Number | Rate | Number | Rate | Number | Rate | Number | Rate | Number | Rate | Number | Rate |
| Total, under 1 year | 2,300 | 691.7 | 2,200 | 687.2 | 21,100 | 724.4 | 22,100 | 750.3 | 28,400 | 731.9 | 29,700 | 759.1 |
| Under 28 days | 1,580 | 476.4 | 1,550 | 474.7 | 14,080 | 482.9 | 14,050 | 478.0 | 18,700 | 482.4 | 18,890 | 482.8 |
| 28 days–11 months | 710 | 214.1 | 690 | 211.3 | 7,040 | 241.5 | 7,950 | 270.5 | 9,680 | 249.7 | 10,750 | 274.8 |
| Certain gastrointestinal diseases.008–009,535,555–558 | 30 | * | 20 | 6.1 | 190 | 6.5 | 160 | 5.4 | 220 | 5.7 | 200 | 5.1 |
| Pneumonia and influenza.480–487 | 10 | * | – | * | 240 | 8.2 | 250 | 8.5 | 340 | 8.8 | 330 | 8.4 |
| Congenital anomalies740–759 | 660 | 199.0 | 500 | 153.1 | 4,880 | 167.4 | 4,580 | 155.8 | 6,470 | 166.9 | 6,330 | 161.8 |
| Disorders relating to short gestation and unspecified low birthweight765 | 310 | 93.5 | 250 | 76.6 | 2,870 | 98.4 | 2,890 | 98.3 | 3,540 | 91.3 | 3,780 | 96.6 |
| Birth trauma767 | – | * | 20 | * | 140 | 4.8 | 100 | * | 230 | 5.9 | 140 | 3.6 |
| Intrauterine hypoxia and birth asphyxia768 | – | * | 20 | * | 390 | 13.4 | 370 | 12.6 | 490 | 12.6 | 520 | 13.3 |
| Respiratory distress syndrome.769 | 130 | 39.2 | 50 | * | 940 | 32.2 | 940 | 32.0 | 1,220 | 31.5 | 1,280 | 32.7 |
| Other conditions originating in the perinatal period.760–764,766,770–779 | 570 | 171.9 | 690 | 211.3 | 5,250 | 180.1 | 5,750 | 195.6 | 7,240 | 186.8 | 7,740 | 197.8 |
| Sudden infant death syndrome798.0 | 170 | 51.3 | 210 | 64.3 | 1,980 | 67.9 | 2,190 | 74.5 | 2,700 | 69.6 | 3,100 | 79.2 |
| All other causesResidual | 410 | 123.6 | 480 | 147.0 | 4,240 | 145.4 | 4,750 | 161.6 | 5,920 | 152.7 | 6,210 | 158.7 |

* Figure does not meet standard of reliability or precision; see [Technical notes](#).

– Quantity zero.

NOTES: Figures include all revisions received from the States. Cumulative and 12-month figures for the current year reflect revisions received for previous months, and figures for earlier years may differ from those previously published.

Technical notes

Nature and sources of data

Data in this report are provisional unless otherwise specified and include only events occurring within the United States (50 States and the District of Columbia). Mortality data exclude fetal deaths. Data for the Commonwealth of Puerto Rico are not included in the U.S. totals.

Birth, death, and infant death figures in [tables 2](#) and [4](#) for each State are estimates by State of residence. These estimates are derived by applying adjustment ratios to the actual counts of certificates for all events occurring in the State and received in registration offices during a 1-month period regardless of date of the event. The adjustment ratios for each data year represent the observed relationship between final State occurrence and residence figures for the three most recent years for which final data were available and are expressed as a single ratio for each State. As in previous years, monthly State marriage and divorce figures represent the actual count of all events occurring in the State (State of occurrence) that were received in the registration offices during the 1-month period. Delay in the receipt of certificates in a registration office may result in a low State figure for a given month followed by a high figure for the month(s) in which the delayed records are received. Data for previous months and cumulative data include revised figures received from the States.

Figures for births, deaths, and infant deaths for California in [tables 2](#) and [4](#) contain adjustments for varying lengths of State reporting periods. Figures for Texas for all events shown in [tables 2–4](#) also are adjusted for varying lengths of State reporting periods. The figures for both States are adjusted by the ratio between the number of days in the data month and the number of days in the State reporting period. The adjusted figures are included in the U.S. totals shown elsewhere in this report.

U.S. totals for births, deaths, and infant deaths are based on the State estimates by State of residence and, therefore, in effect, exclude events to nonresidents of the United States. Events to nonresidents of the United States are included in all

marriage and divorce figures. The effect of excluding events to nonresidents from the U.S. totals is small.

Provisional totals for the United States include estimates for State data shown as not available. Provisional totals for births and marriages for the entire United States include adjustments for observed differences between provisional and final monthly figures.

Divorce figures include reported annulments. The monthly national divorce estimate is obtained by multiplying the total for the reporting areas by the ratio observed between the most recent final annual divorce total for the United States and the provisional total for the reporting areas combined.

Random variation—Although the counts in this report are not subject to sampling variability (except the Current Mortality Sample), they may be affected by random variation. When the number of events is small and the probability of such an event is small, considerable caution must be observed in interpreting the data. Such infrequent events may be assumed to follow a Poisson probability distribution. For this distribution a simple approximation may be used to estimate the random variation as follows:

If N is the number of events in the population and R is the corresponding rate, the chances are 19 in 20 that

$$1. N - 2\sqrt{N} \text{ and } N + 2\sqrt{N}$$

covers the “true” number of events.

$$2. R - 2 \frac{R}{\sqrt{N}} \text{ and } R + 2 \frac{R}{\sqrt{N}}$$

covers the “true” rate.

If the rate R_1 corresponding to N_1 events is compared with the rate R_2 corresponding to N_2 events, the difference between the two rates may be regarded as statistically significant at the 0.05 level if it exceeds

$$2 \sqrt{\frac{R_1^2}{N_1} + \frac{R_2^2}{N_2}}$$

Additional information on random variation in numbers of events, rates, and ratios may be found in the technical appendixes of *Vital Statistics of the United States, 1990, Volumes I and II*.

Rates

Rates are on an annual basis and, except for infant mortality rates, are per 1,000 or 100,000 estimated population residing in the United States. The populations used for computing these rates are furnished by the U.S. Bureau of the Census. Rates shown in this report beginning with 1992 were computed using populations based on the 1990 Census enumeration comparable to those used for final data. Monthly rates are based on populations estimated for the specific month. Year-to-date rates are averages of monthly rates that have been weighted by the number of days in the corresponding months. Rates for 12-month periods are the sum of events for the period per population estimated at the midpoint of the period.

Infant mortality rates are deaths under 1 year of age for the specified period (monthly, year-to-date, or 12-month period) per 1,000 or 100,000 live births. Births used for computing monthly and year-to-date infant mortality rates are adjusted for monthly variation in the number of births. Births used to compute 12-month rates do not contain this adjustment. Births used for computing infant mortality rates are not corrected for observed differences between provisional and final monthly figures as described earlier in “Nature and sources of data.” Because monthly infant mortality rates are based on relatively few events, they are highly variable. Therefore, comparisons of monthly infant mortality rates should be interpreted cautiously; see “[Random variation](#).”

Age-adjusted death rates are used to compare relative mortality risks across groups and over time. However, they should be viewed as constructs or indexes rather than as direct or actual measures of mortality risk. Statistically, they are weighted averages of the age-specific death rates, where the weights represent the fixed population proportions by age. See chapter 5 of an earlier report (1). The age-adjusted death rates presented in this report were computed by the direct method, that is, by applying age-specific death rates to the U.S. standard million population (2). See also chapter 10 of an earlier report (1). Age groups in [table 5](#) were used to compute the age-adjusted

rates shown in that table. It is important not to compare age-adjusted rates with crude rates.

Current Mortality Sample

The Current Mortality Sample (CMS) is a 10-percent systematic sample of death certificates drawn each month after the certificates are counted in the State registration offices. Deaths and death rates for the United States by age, race, sex, and cause are estimated based on the sample. Because of the additional time required to select and process the certificates, data based on the CMS are published 1 month after publication of the U.S. and State counts. Complete information concerning the underlying cause of death sometimes is not available when the sample is drawn. As a result estimates based on sample counts for certain causes are biased. Correction for bias is not made in this report.

Estimated numbers of deaths based on the sample were proportionately adjusted to be consistent with estimates based on the count of death certificates received in State registration offices.

HIV infection—Beginning with data for 1987, the National Center for Health Statistics introduced categories *042–*044 for classifying and coding Human immunodeficiency virus (HIV) infection. The asterisks before the categories indicate that these codes are not part of the

Ninth Revision, International Classification of Diseases. Deaths classified to these categories are included in All other infectious and parasitic diseases in the List of 72 Selected Causes of Death and are also shown separately at the bottom of table 6.

Sampling variability—Because the estimates of deaths and death rates presented in this report with the exception of total deaths and deaths under 1 year are based on a sample of death certificates, they are subject to sampling variability. The estimated relative standard error in the following table is a measure of the

Relative standard errors for estimated numbers of deaths from the Current Mortality Sample expressed as a percent of the estimate

| Estimated number of deaths | Relative standard error of estimate (as percent) | |
|----------------------------|--|--------------------------------------|
| | 170,000 estimated deaths each month | 2,000,000 estimated deaths each year |
| 10 | 94.9 | 94.9 |
| 20 | 67.1 | 67.1 |
| 50 | 42.4 | 42.4 |
| 100 | 30.0 | 30.0 |
| 200 | 21.2 | 21.2 |
| 500 | 13.4 | 13.4 |
| 1,000 | 9.5 | 9.5 |
| 2,000 | 6.7 | 6.7 |
| 5,000 | 4.2 | 4.2 |
| 10,000 | 2.9 | 3.0 |
| 20,000 | 2.0 | 2.1 |
| 50,000 | 1.1 | 1.3 |
| 100,000 | 0.6 | 0.9 |
| 200,000 | ... | 0.6 |
| 500,000 | ... | 0.4 |
| 1,000,000 | ... | 0.2 |

sampling error of the estimated number of deaths (or of the estimated death rate) expressed as a percent of the estimate. The first column refers to monthly estimates; the second to annual; cumulative year-to-date totals fall between the two.

The chances are about 2 in 3 that the percent difference between an estimate and the result of a complete count is less than the percent shown. The chances are about 19 in 20 that the percent difference is less than twice the percent shown. A figure based on 100 or fewer estimated deaths has a relative standard error of 30 percent or more and is, therefore, considered unreliable. A rate based on 100 or fewer estimated deaths has been replaced by an asterisk.

Unless otherwise specified comparisons made in the text between death rates based on the CMS were statistically significant at the 0.05 level of significance. Lack of comment in the text about any two rates does not mean that the difference was tested and found not to be significant at this level.

References

1. Feinleib M, Zarate AO, eds. Reconsidering age adjustment procedures: Workshop proceedings. National Center for Health Statistics. Vital Health Stat 4(29). 1992.
2. Grove RD, Hetzel AM. Vital statistics rates in the United States, 1940–1960. Public Health Service. Washington: National Center for Health Statistics. 1968.

Suggested citation

National Center for Health Statistics. Births, marriages, divorces, and deaths for October 1996. Monthly vital statistics report; vol 45 no 10. Hyattsville, Maryland: National Center for Health Statistics. 1997.

Copyright information

All material appearing in this report is in the public domain and may be reproduced or copied without permission; citation as to source, however, is appreciated.

National Center for Health Statistics

Director
Edward J. Sondik, Ph.D.

Deputy Director
Jack R. Anderson

Division of Vital Statistics

Director
Mary Anne Freedman

**DEPARTMENT OF
HEALTH & HUMAN SERVICES**

Centers for Disease Control and Prevention
National Center for Health Statistics
6525 Belcrest Road
Hyattsville, Maryland 20782

FIRST CLASS MAIL
POSTAGE & FEES PAID
PHS/NCHS
PERMIT NO. G-281

OFFICIAL BUSINESS
PENALTY FOR PRIVATE USE, \$300

To receive this publication regularly, contact the National Center for Health Statistics by calling 301-436-8500
E-mail: nchsquery@nch10a.em.cdc.gov
Internet: <http://www.cdc.gov/nchswww/nchshome.htm>

DHHS Publication No. (PHS) 97-1120
7-0397 (4/97)