

Monthly Vital Statistics Report



Provisional Data From the CENTERS FOR DISEASE CONTROL AND PREVENTION/National Center for Health Statistics

Births, Marriages, Divorces, and Deaths for July 1995

Births

According to provisional reports, an estimated 334,000 births occurred in the United States during July 1995. This was a 3-percent decrease from the provisional number of births reported for July 1994 (346,000). The birth rate, 15.0 live births per 1,000 population, was 4 percent lower than the rate of 15.6 for July 1994. The fertility rate, 66.2 live births per 1,000 women aged 15–44 years, was 3 percent lower than the comparable rate for July 1994 (68.6). The seasonally adjusted fertility rate (63.5) was also 3 percent lower than the comparable rate for July 1994 (65.8).

During the first 7 months of 1995, an estimated 2,270,000 births occurred, a

1-percent decrease from the 2,292,000 reported for the first 7 months of 1994. The birth rate declined by 2 percent from 15.2 in 1994 to 14.9 in 1995. The fertility rate for the first 7 months of 1995 was 65.8, 1 percent lower than the rate for the same period of 1994 (66.6).

An estimated 3,958,000 live births occurred in the 12-month period ending with July 1995, a decline of 1 percent from the 3,998,000 births reported for the same period a year earlier. The birth rate of 15.1 was 2 percent lower than the rate of 15.4 for the preceding 12 months. The fertility rate for the most recent 12-month period was 66.7, 1 percent lower than the rate for the 12 months ending with July 1994 (67.5). These lower rates continue

the generally downward trend observed since early 1991.

Natural increase

As a result of natural increase, the excess of births over deaths, an estimated 146,000 people, or 6.6 persons per 1,000 population, were added to the population during July 1995.

For the 12-month period ending with July 1995, 1,656,000 persons were added to the population. This represented a rate of natural increase of 6.3, 5 percent lower than the rate of 6.6 for the preceding 12-month period. The decline in the rate of natural increase was due to a decrease in the birth rate and a constant death rate.

Provisional Vital Statistics for the United States

[Rates for infant deaths are deaths under 1 year per 1,000 live births; fertility rates are live births per 1,000 women aged 15–44 years; all other rates are per 1,000 total population. Data are subject to monthly reporting variation; see Technical notes]

Item	July				January–July				12 months ending with July				
	Number		Rate		Number		Rate		Number		Rate		
	1995	1994	1995	1994	1995	1994	1995	1994	1995	1994	1995	1994	1993
Live births	334,000	346,000	15.0	15.6	2,270,000	2,292,000	14.9	15.2	3,958,000	3,998,000	15.1	15.4	15.7
Fertility rate	66.2	68.6	65.8	66.6	66.7	67.5	68.5
Deaths	188,000	184,000	8.4	8.3	1,373,000	1,357,000	9.0	9.0	2,302,000	2,280,000	8.8	8.8	8.7
Infant deaths	2,400	2,600	7.3	7.5	17,500	18,400	7.7	8.0	30,400	32,000	7.7	8.0	8.4
Natural increase	146,000	162,000	6.6	7.3	897,000	935,000	5.9	6.2	1,656,000	1,718,000	6.3	6.6	7.0
Marriages	224,000	222,000	10.0	10.0	1,298,000	1,300,000	8.6	8.7	2,359,000	2,338,000	9.0	9.0	9.1
Divorces	97,000	98,000	4.4	4.4	685,000	693,000	4.5	4.6	1,183,000	1,187,000	4.5	4.6	4.6
Population base (in millions)	262.8	260.7	261.8	259.6	256.7

NOTES: Figures include revisions received from the States. Twelve-month figures for the current year reflect revisions received for previous months, and figures for earlier years may differ from those previously published.



U.S. DEPARTMENT OF HEALTH AND HUMAN SERVICES
Public Health Service
Centers for Disease Control and Prevention
National Center for Health Statistics



Marriages

Approximately 224,000 couples married in July 1995, 1 percent more than in July 1994 (222,000). The marriage rate per 1,000 population for July was 10.0 in both years.

The number of marriages performed in the first 7 months of 1995 (1,298,000) was slightly lower than the number performed for the first 7 months of 1994 (1,300,000). The marriage rate for the 7-month period in 1995 was 1 percent lower (8.6) than the marriage rate for the comparable period in 1994 (8.7).

The number of marriages performed during the 12 months ending with July 1995 (2,359,000) was 1 percent higher than the number of marriages performed during the comparable period a year earlier (2,338,000). The marriage rate was 9.0 for the period ending with July 1994 and for the period ending with July 1995.

Divorces

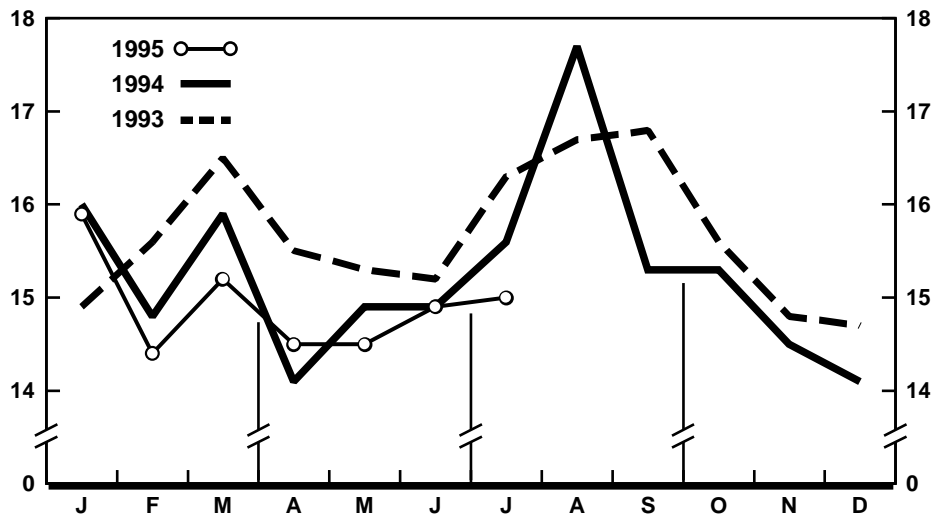
An estimated 97,000 divorces were granted in July 1995, 1 percent fewer than were granted in July a year earlier (98,000). The divorce rate per 1,000 population for July was 4.4 in both years.

The number and rate of divorces for the first 7 months of 1995 were lower than the number and rate for the same period in 1994. The number of divorces for the 7-month period in 1995 was 1 percent lower (685,000) than the number of divorces for the same 7-month period in 1994 (693,000), while the rate declined 2 percent—from 4.6 in 1994 to 4.5 in 1995.

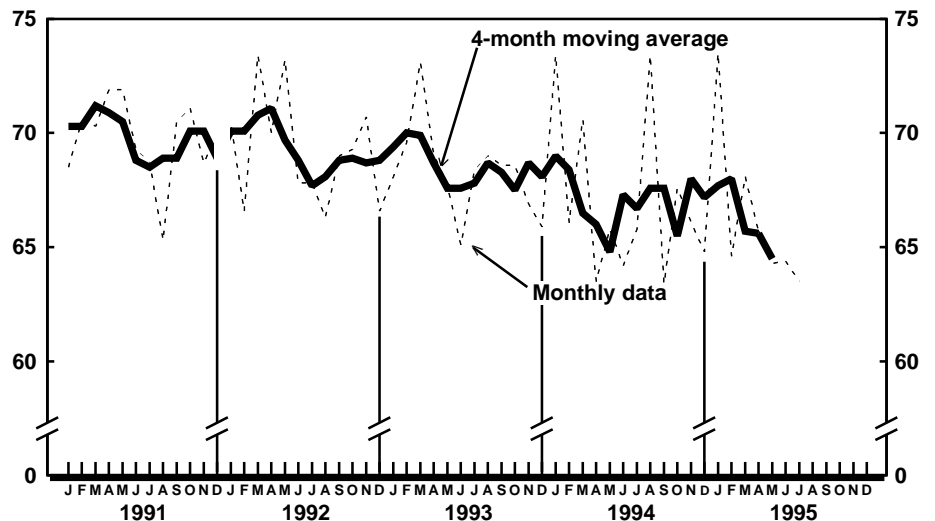
Approximately 1,183,000 couples divorced during the 12-month period ending with July 1995, a slight decline compared with the number divorced during the same period a year earlier (1,187,000). The divorce rate for the current 12-month period (4.5) was 2 percent lower than the rate for the period ending with July 1994 (4.6).

Deaths

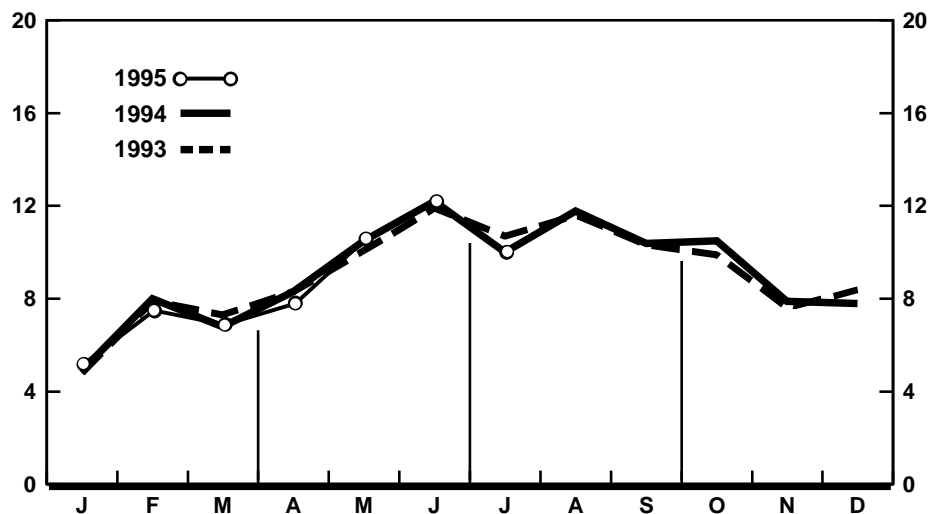
For July 1995 there were an estimated 188,000 deaths in the United States. The death rate was 8.4 deaths per 1,000 population, 1 percent higher than the rate of 8.3 for July a year earlier.



Provisional birth rates per 1,000 population by month: United States, 1993-95



Provisional seasonally adjusted fertility rates per 1,000 women aged 15-44 years: United States, 1991-95



Provisional marriage rates per 1,000 population by month: United States, 1993-95

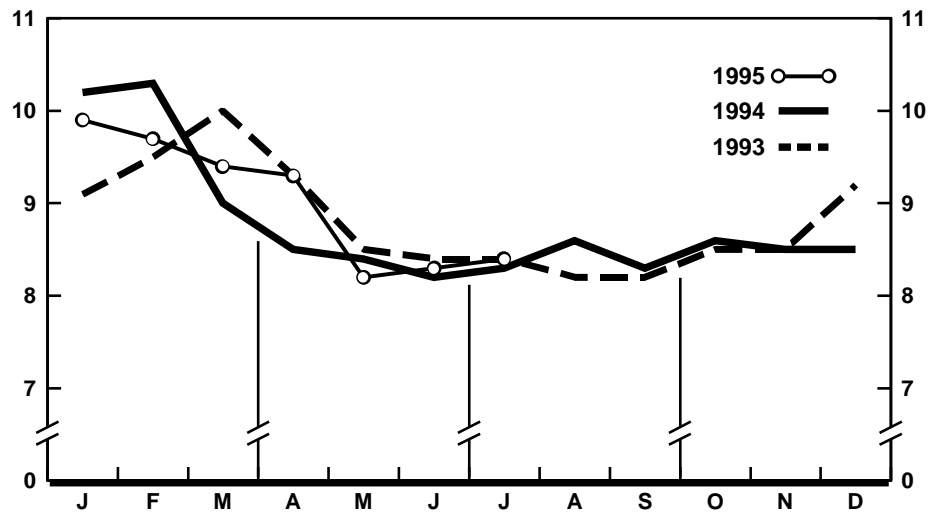
Among the 188,000 deaths for July 1995 were 2,400 deaths at ages under 1 year.

According to provisional statistics, 1,373,000 deaths occurred during the first 7 months of 1995, 1 percent higher than the number estimated for the first 7 months of 1994 (1,357,000). The death rate, 9.0 per 1,000 population, was the same as the rate for January–July 1994. Among the 1,373,000 deaths for the first 7 months of 1995 were 17,500 deaths at ages under 1 year, yielding an infant mortality rate of 7.7 per 1,000 live births. This rate was 4 percent lower than the rate of 8.0 for the first 7 months of 1994.

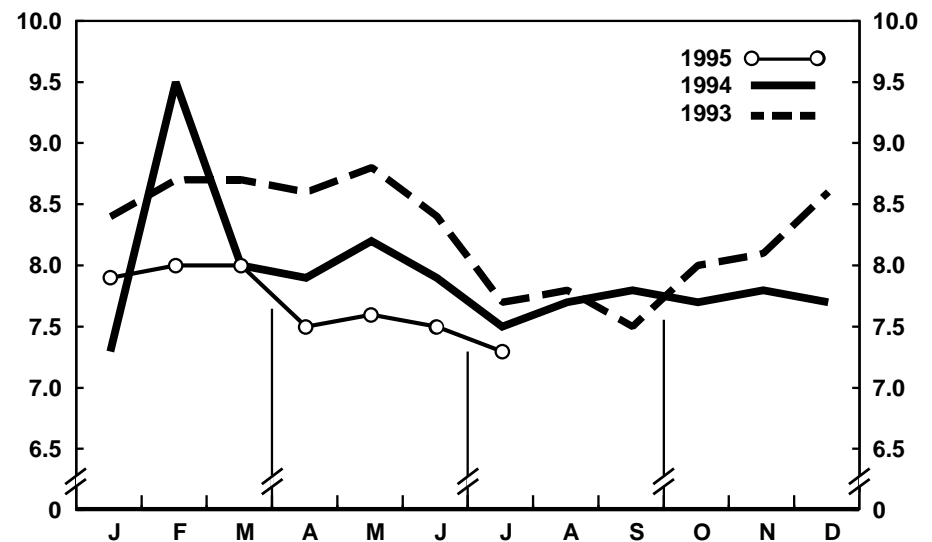
The death rate for the 12 months ending with July 1995 was 8.8 deaths per 1,000 population, the same as the rate for the comparable 12-month period a year earlier. The infant mortality rate for this 12-month period was 7.7 per 1,000 live births, 4 percent lower than the rate of 8.0 for the 12 months ending with July 1994.

Current Mortality Sample, 12 months ending with June 1995—The provisional death rate for the 12 months ending with June 1995 was 878.6 per 100,000 population, compared with a rate of 878.8 for the 12-month period ending with June 1994. The change in the death rate was not statistically significant. The provisional age-adjusted death rate for the 12-month period ending with June 1995 was 507.0 per 100,000 U.S. standard million population, 1 percent lower than the rate of 510.7 for the 12-month period ending with June 1994. Age-adjusted death rates control for changes and variations in the age composition of the population; therefore, they are better indicators than crude rates for showing changes in mortality risk over time and for showing differences between race-sex groups within the population. Among the race-sex groups, the estimated age-adjusted death rates decreased for white males and black males. By age the death rate for the total population decreased for the age groups 65–74 years and 85 years and over.

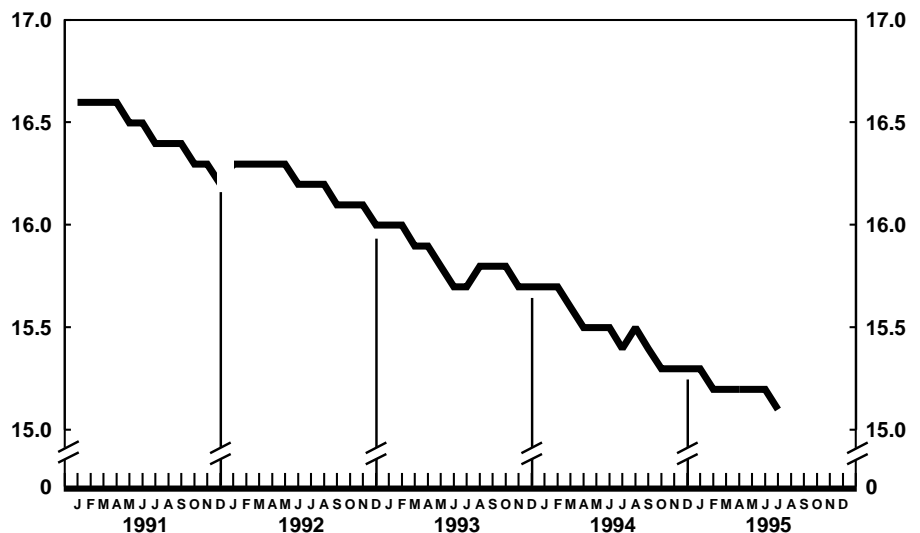
Among the major causes of death, the estimated death rate decreased between the two successive 12-month periods for Diseases of heart, Pneumonia and influenza, and Homicide and legal intervention. The death rate increased between the two successive 12-month



Provisional death rates per 1,000 population by month: United States, 1993–95



Provisional infant mortality rates per 1,000 live births by month: United States, 1993–95

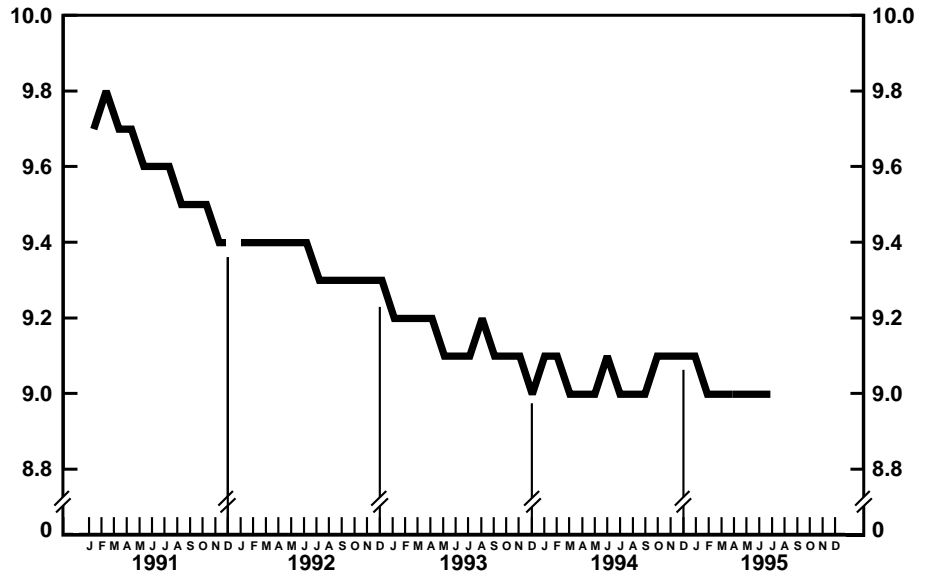


Provisional birth rates per 1,000 population for successive 12-month periods ending with month indicated: United States, 1991–95

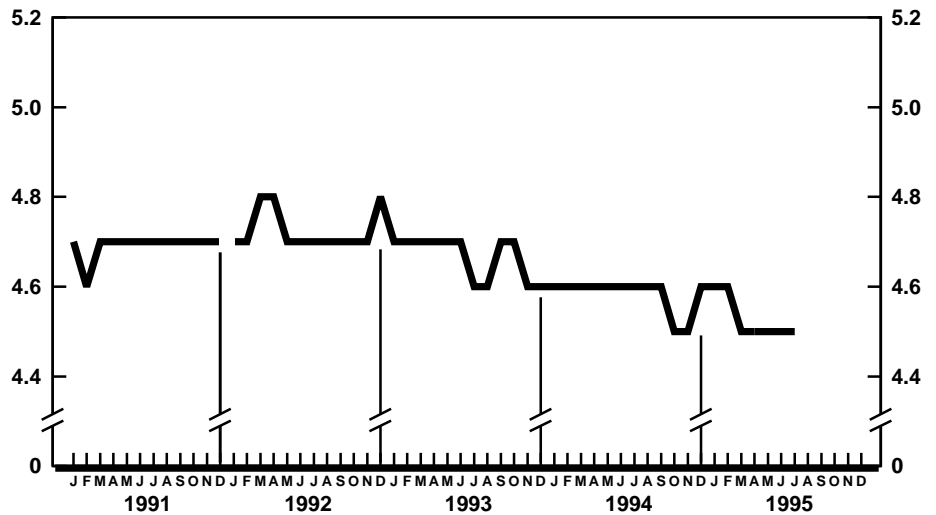
periods for Cerebrovascular diseases and Human immunodeficiency virus infection.

The death rate for Injury by firearms for the 12 months ending with June 1995 was 14.3 per 100,000 population, 5 percent lower than the rate of 15.1 for the comparable 12-month period a year earlier.

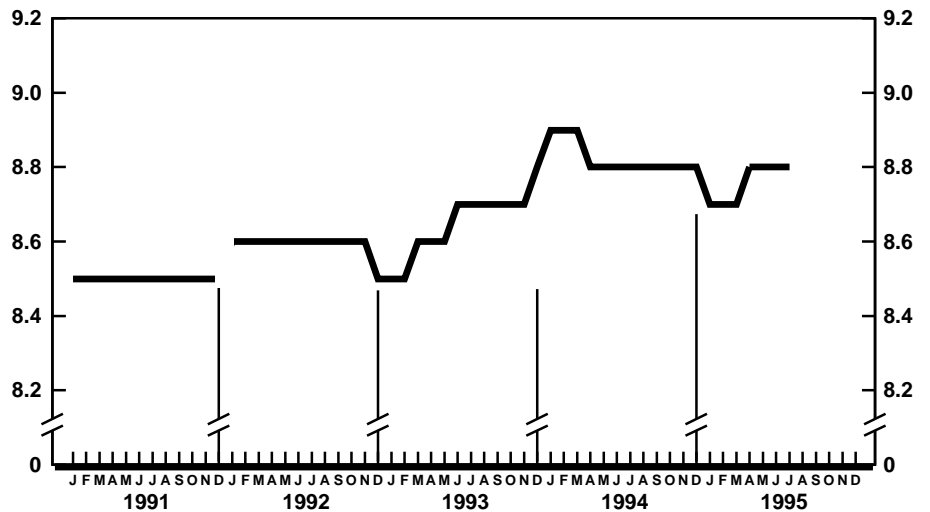
The infant mortality rate for the 12 months ending with June 1995 was 772.7 per 100,000 live births, 4 percent lower than the rate of 804.9 for the same 12-month period a year earlier. For infants under 28 days, the 12-month rate ending with June 1995 was 492.8 compared with a rate of 516.0 for the 12-month period a year earlier. The infant mortality rate for infants 28 days–11 months was 279.9 compared with a rate of 288.7 for the 12-month period a year earlier. The changes in the mortality rates for infants under 28 days and for those 28 days–11 months were not statistically significant. Among causes of infant death, the infant mortality rate decreased between the two successive 12-month periods for Respiratory distress syndrome.



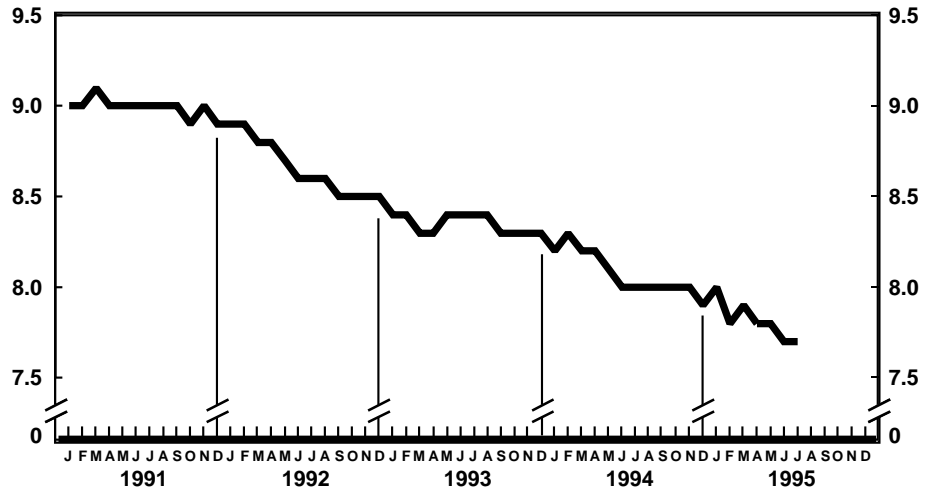
Provisional marriage rates per 1,000 population for successive 12-month periods ending with month indicated: United States, 1991–95



Provisional divorce rates per 1,000 population for successive 12-month periods ending with month indicated: United States, 1991–95



Provisional death rates per 1,000 population for successive 12-month periods ending with month indicated: United States, 1991–95



Provisional infant mortality rates per 1,000 live births for successive 12-month periods ending with month indicated: United States, 1991-95

Symbols

- - - Data not available
 - . . . Category not applicable
 - Quantity zero
 - 0.0 Quantity more than zero but less than 0.05
 - * Figure does not meet standards of reliability or precision (see Technical notes)
-

Table 1. Provisional number of live births, marriages, divorces, deaths, and infant deaths and rates, by month: United States, January 1994–July 1995

[Data are provisional and are subject to monthly reporting variation; see Technical notes]

Period	Live births				Marriages		Divorces		Deaths		Infant deaths	
	Number	Rate per 1,000 women aged 15–44 years			Number	Rate per 1,000 population	Number	Rate per 1,000 population	Number	Rate per 1,000 population	Number	Rate per 1,000 live births
		Rate per 1,000 population	Unadjusted	Seasonally adjusted ¹								
1994:												
January	352,000	16.0	69.9	73.4	107,000	4.9	97,000	4.4	224,000	10.2	2,500	7.3
February	294,000	14.8	64.8	66.1	156,000	8.0	88,000	4.4	204,000	10.3	2,900	9.5
March	350,000	15.9	69.6	70.6	147,000	6.8	103,000	4.7	199,000	9.0	2,700	8.0
April	302,000	14.1	62.0	63.5	175,000	8.3	100,000	4.7	182,000	8.5	2,500	7.9
May	329,000	14.9	65.3	65.8	232,000	10.5	104,000	4.7	186,000	8.4	2,700	8.2
June	319,000	14.9	65.5	64.2	262,000	12.2	103,000	4.8	176,000	8.2	2,500	7.9
July	346,000	15.6	68.6	65.8	222,000	10.0	98,000	4.4	184,000	8.3	2,600	7.5
August	392,000	17.7	77.7	73.4	262,000	11.8	99,000	4.5	190,000	8.6	2,800	7.7
September	329,000	15.3	67.4	63.4	224,000	10.4	99,000	4.6	178,000	8.3	2,500	7.8
October	340,000	15.3	67.3	67.6	232,000	10.5	99,000	4.5	190,000	8.6	2,600	7.7
November	313,000	14.5	64.1	66.1	171,000	7.9	98,000	4.5	182,000	8.5	2,500	7.8
December	314,000	14.1	62.3	64.8	173,000	7.8	103,000	4.7	190,000	8.5	2,500	7.7
1995:												
January	353,000	15.9	70.0	73.5	113,000	5.2	96,000	4.3	220,000	9.9	2,700	7.9
February	288,000	14.4	63.3	64.6	146,000	7.5	89,000	4.4	194,000	9.7	2,400	8.0
March	339,000	15.2	67.1	68.1	150,000	6.9	98,000	4.4	208,000	9.4	2,700	8.0
April	313,000	14.5	64.1	65.7	164,000	7.8	98,000	4.6	200,000	9.3	2,400	7.5
May	322,000	14.5	63.8	64.3	237,000	10.6	103,000	4.6	184,000	8.2	2,500	7.6
June	321,000	14.9	65.7	64.4	263,000	12.2	104,000	4.8	180,000	8.3	2,400	7.5
July	334,000	15.0	66.2	63.5	224,000	10.0	97,000	4.4	188,000	8.4	2,400	7.3

¹The method of seasonal adjustment, developed by the U.S. Bureau of the Census, is described in *The X-11 Variant of the Census Method II Seasonal Adjustment Program*, Technical Paper No. 15 (1967 revision).

NOTE: Figures include all revisions received from the States and, therefore, may differ from those previously published.

Table 2. Provisional number of live births and deaths: Each division and State, July 1994 and 1995, and cumulative figures, 1993–95

[Data are estimates by State of residence; see Technical notes]

Area	Live births					Deaths				
	July		January–July			July		January–July		
	1995	1994	1995	1994	1993	1995	1994	1995	1994	1993
New England	13,567	14,539	104,351	102,072	105,417	9,622	9,495	70,482	68,060	70,304
Maine	1,263	1,189	8,097	8,290	8,567	1,004	1,099	6,726	6,516	6,725
New Hampshire	1,356	1,474	8,453	8,560	8,389	726	668	5,475	5,171	5,148
Vermont	519	540	3,926	3,965	4,333	352	350	3,091	2,742	2,947
Massachusetts	6,139	6,256	48,361	48,914	51,503	4,054	4,440	32,772	31,513	33,590
Rhode Island	1,238	1,290	7,202	7,674	8,452	796	774	5,659	5,492	5,822
Connecticut	3,052	3,790	28,312	24,669	24,173	2,690	2,164	16,759	16,626	16,072
Middle Atlantic	47,707	48,637	303,274	319,908	326,126	30,406	29,434	222,923	218,824	222,953
New York	23,142	23,821	152,341	163,498	163,908	13,825	13,898	101,701	100,263	104,057
New Jersey	11,421	11,315	61,376	64,704	68,577	6,151	5,648	45,110	42,856	43,331
Pennsylvania	13,144	13,501	89,557	91,706	93,641	10,430	9,888	76,112	75,705	75,565
East North Central	53,457	54,233	356,710	373,361	383,002	32,112	30,404	231,071	234,191	226,581
Ohio	11,991	12,610	86,358	94,879	94,596	8,623	7,863	61,652	63,597	59,843
Indiana	7,536	6,812	44,327	46,701	48,985	4,383	4,654	30,323	31,642	30,337
Illinois	16,860	16,921	107,992	109,248	110,960	8,821	8,269	63,528	63,292	62,073
Michigan	11,685	12,305	78,837	81,765	86,742	6,561	6,327	49,060	48,959	48,611
Wisconsin	5,385	5,585	39,196	40,768	41,719	3,724	3,291	26,508	26,701	25,717
West North Central	23,447	23,362	154,153	147,627	148,643	14,556	14,039	103,308	101,294	101,399
Minnesota	5,683	5,860	36,787	38,137	37,780	2,942	3,046	21,726	21,420	21,057
Iowa	3,326	3,008	25,233	20,396	21,008	2,252	2,029	15,543	15,394	17,453
Missouri	6,992	7,839	43,666	44,516	44,411	5,256	5,178	35,578	34,270	32,953
North Dakota	691	783	5,098	5,018	5,079	462	471	3,532	3,445	3,398
South Dakota	885	848	6,345	6,193	6,341	530	508	4,045	4,002	3,970
Nebraska	2,003	2,139	13,487	13,093	13,303	1,256	1,171	8,915	8,600	8,745
Kansas	3,867	2,885	23,537	20,274	20,721	1,858	1,636	13,969	14,163	13,823
South Atlantic	56,867	56,934	381,531	378,379	385,826	34,372	33,423	260,472	255,405	253,318
Delaware	1,054	781	6,007	5,970	6,165	469	462	3,642	3,624	3,631
Maryland	5,920	6,402	42,429	39,296	42,461	3,223	3,298	24,106	22,773	25,365
District of Columbia	719	883	5,214	5,765	5,815	476	561	3,719	4,020	3,979
Virginia	8,165	8,395	54,309	54,488	56,273	4,196	4,330	31,439	32,261	30,741
West Virginia	1,851	1,733	12,816	13,187	13,133	1,517	1,446	11,878	12,241	11,950
North Carolina	9,778	10,283	60,558	57,862	57,296	5,273	5,290	38,516	38,767	37,557
South Carolina	3,957	4,130	28,568	30,249	31,692	2,397	2,383	19,000	18,247	18,424
Georgia	7,641	8,527	65,154	62,236	63,893	4,413	3,744	34,827	33,798	33,288
Florida	17,782	15,800	106,476	109,326	109,098	12,408	11,909	93,345	89,674	88,383
East South Central	18,372	20,030	127,802	131,783	133,089	12,663	12,698	94,361	93,496	92,373
Kentucky	4,394	4,550	29,091	29,883	30,214	2,977	2,857	23,396	22,740	22,162
Tennessee	5,658	6,385	41,050	42,636	41,313	3,764	4,327	29,829	28,812	28,997
Alabama	5,876	5,679	35,730	35,528	37,654	3,677	3,414	25,274	25,854	25,470
Mississippi	2,444	3,416	21,931	23,736	23,908	2,245	2,100	15,862	16,090	15,744
West South Central	38,677	36,116	281,524	269,970	279,043	19,186	18,810	141,647	145,503	141,376
Arkansas	3,329	3,267	19,447	19,879	19,924	2,277	2,177	14,918	16,301	15,887
Louisiana	5,868	5,733	38,812	39,429	41,425	3,306	3,188	23,674	25,364	24,844
Oklahoma	4,035	3,684	26,680	26,775	26,426	2,717	2,539	19,390	19,393	19,152
Texas ¹	25,445	23,432	196,585	183,887	191,268	10,886	10,906	83,665	84,445	81,493
Mountain	20,584	22,299	144,085	144,709	145,250	10,062	11,110	68,862	67,266	65,192
Montana	957	959	6,491	6,376	6,656	608	615	4,452	4,319	4,417
Idaho	1,580	1,684	10,196	10,334	10,213	691	634	4,924	4,890	4,894
Wyoming	543	593	3,811	3,756	3,829	313	320	2,176	2,046	2,029
Colorado	4,193	4,520	30,072	31,860	32,504	1,917	2,038	14,841	14,331	13,820
New Mexico	2,443	2,648	15,629	16,352	15,825	1,141	986	7,443	7,243	7,070
Arizona	5,771	6,573	43,851	40,026	42,046	3,576	4,888	21,336	21,385	20,777
Utah	3,717	3,111	22,733	22,637	21,300	843	710	6,301	6,130	5,917
Nevada	1,380	2,211	11,302	13,368	12,877	973	919	7,389	6,922	6,268
Pacific	60,449	68,296	410,751	418,524	415,204	25,087	25,091	180,128	173,056	170,882
Washington	6,694	6,373	44,225	44,449	38,079	3,600	3,170	22,930	22,596	25,006
Oregon	3,597	3,766	26,100	25,186	24,431	2,477	2,477	16,862	16,650	15,474
California ¹	47,560	55,555	323,710	329,709	335,605	18,139	18,579	134,542	128,141	124,866
Alaska	828	933	6,149	7,941	5,768	242	219	1,308	1,366	1,249
Hawaii	1,770	1,669	10,567	11,239	11,321	629	646	4,486	4,303	4,287
Puerto Rico ²	5,017	---	35,070	---	---	2,147	---	17,039	---	---

¹Figures include adjustments for varying length of reporting periods; see Technical notes.²Data for Puerto Rico are not included in U.S. total figures.

NOTES: Figures include all revisions received from the States. Cumulative figures for the current year reflect revisions received for previous months, and figures for earlier years may differ from those previously published.

Table 3. Provisional number of marriages and divorces: Each division and State, July 1994 and 1995, and cumulative figures, 1993–95

[By State of occurrence. Number of events reported; see Technical notes. Divorces include reported annulments]

Area	Marriages					Divorces				
	July		January–July			July		January–July		
	1995	1994	1995	1994	1993	1995	1994	1995	1994	1993
New England	10,480	10,876	50,115	53,745	45,265	3,368	3,430	23,062	21,968	25,711
Maine	1,382	1,141	5,213	4,949	5,182	552	465	2,899	2,933	3,246
New Hampshire	1,134	1,170	4,219	4,969	2,985	397	555	2,870	2,923	2,798
Vermont	629	838	2,620	2,555	2,781	141	165	1,745	1,574	1,607
Massachusetts	4,239	4,777	22,042	26,417	18,833	1,136	1,353	7,829	7,114	9,838
Rhode Island	837	742	3,559	3,549	3,674	305	244	2,175	1,903	2,042
Connecticut	2,259	2,208	12,462	11,306	11,810	837	648	5,544	5,521	6,180
Middle Atlantic	27,201	27,515	142,267	137,603	143,298	7,877	9,217	67,686	68,807	69,021
New York ¹	14,813	16,067	75,850	72,514	76,274	3,034	4,197	29,859	31,887	31,235
New Jersey	5,602	5,452	26,948	27,090	27,566	1,610	1,786	14,757	14,394	14,949
Pennsylvania	6,786	5,996	39,469	37,999	39,458	3,233	3,234	23,070	22,526	22,837
East North Central	32,671	36,258	176,599	178,633	180,963	² 10,147	² 10,886	² 85,277	² 85,704	² 88,173
Ohio	8,945	9,701	47,963	47,899	47,116	4,052	3,699	28,986	28,514	29,720
Indiana	5,851	5,702	28,035	27,164	27,853	---	---	---	---	---
Illinois	5,953	9,240	44,775	48,870	48,843	1,913	3,368	22,786	24,257	25,657
Michigan	7,646	7,641	36,684	36,119	35,436	2,735	2,529	23,136	22,984	22,477
Wisconsin	4,276	3,974	19,142	18,581	21,715	1,447	1,290	10,369	9,949	10,319
West North Central	15,583	14,187	79,065	75,990	79,336	6,863	5,506	44,014	44,099	45,355
Minnesota	3,784	3,881	17,017	16,570	16,508	1,202	1,110	8,942	9,246	10,026
Iowa	2,713	2,734	11,881	11,625	14,223	805	639	6,217	6,500	6,284
Missouri	4,419	4,294	25,888	23,765	24,940	2,233	2,116	16,113	16,106	15,634
North Dakota	642	601	2,542	2,652	2,714	159	158	1,264	1,265	1,287
South Dakota	841	905	4,001	4,018	4,121	211	257	1,633	1,687	1,696
Nebraska	1,508	1,442	7,213	7,234	7,303	597	519	3,737	3,825	3,612
Kansas	1,676	330	10,523	10,126	9,527	1,656	707	6,108	5,470	6,816
South Atlantic	41,312	42,728	255,708	252,774	254,141	19,550	21,572	132,879	137,170	137,555
Delaware	494	469	2,856	2,686	2,789	292	316	2,228	2,026	1,846
Maryland	4,621	4,411	22,630	23,304	22,734	1,614	1,418	8,850	9,601	9,730
District of Columbia	245	146	1,065	833	1,432	147	173	852	1,371	975
Virginia	6,370	7,585	38,147	38,863	38,927	2,543	2,523	16,093	16,721	16,904
West Virginia	2,136	1,368	6,134	5,456	7,521	1,022	703	5,442	5,273	5,646
North Carolina	5,707	4,781	35,670	27,558	27,180	3,570	3,182	22,355	21,044	20,759
South Carolina	4,513	4,907	26,660	31,225	30,773	1,224	1,172	8,236	9,011	8,972
Georgia	5,815	6,033	35,490	35,458	36,027	2,882	3,831	21,582	21,976	22,416
Florida	11,411	13,028	87,056	87,391	86,758	6,256	8,254	47,241	50,147	50,307
East South Central	21,284	19,635	111,839	104,687	108,162	8,491	7,646	56,864	56,900	56,306
Kentucky	4,852	5,559	27,371	27,860	26,707	1,949	1,729	13,259	13,382	13,104
Tennessee	9,112	7,247	49,149	40,219	43,813	2,821	2,922	20,058	19,630	19,537
Alabama	4,957	4,008	23,050	23,205	23,487	2,700	2,360	15,685	15,566	16,076
Mississippi	2,363	2,821	12,269	13,403	14,155	1,021	635	7,862	8,322	7,589
West South Central	31,265	24,976	181,984	179,772	169,185	² 12,607	² 11,739	² 81,657	² 84,526	² 83,413
Arkansas	4,391	3,858	20,255	22,113	21,500	1,972	1,227	8,755	10,413	10,158
Louisiana	5,204	4,266	23,692	24,007	20,014	---	---	---	---	---
Oklahoma	2,766	3,013	17,016	17,536	18,000	1,668	1,635	12,646	12,492	12,800
Texas ³	18,904	13,839	121,021	116,116	109,671	8,967	8,877	60,256	61,621	60,455
Mountain	27,255	25,332	160,625	154,249	147,380	² 5,508	7,197	² 35,670	52,024	² 45,186
Montana	1,026	1,009	3,734	3,733	3,901	362	340	2,357	2,414	2,531
Idaho	1,657	1,420	8,413	8,395	7,109	565	544	3,886	4,287	3,983
Wyoming	803	652	2,832	2,561	2,378	208	314	1,899	1,761	1,715
Colorado	3,775	4,338	19,053	19,825	19,366	---	1,516	---	11,404	11,221
New Mexico ^{4,5}	1,482	1,284	8,765	7,319	7,518	1,173	835	6,735	5,806	6,052
Arizona ¹	3,525	3,261	23,583	21,592	24,040	2,548	1,932	15,566	13,569	14,535
Utah	2,105	1,867	12,226	10,935	11,418	652	773	5,227	5,476	5,149
Nevada	12,882	11,501	82,019	79,889	71,650	---	943	---	7,307	---
Pacific	25,869	29,959	146,377	167,630	161,743	² 4,965	² 5,289	² 31,214	² 32,494	² 25,856
Washington	4,609	5,875	23,234	22,772	19,049	2,821	3,063	17,429	17,919	12,436
Oregon	3,077	3,250	14,788	14,011	12,208	1,205	1,500	8,850	9,844	8,999
California	15,710	18,459	94,546	117,230	117,358	---	---	---	---	---
Alaska	663	656	3,042	3,154	2,926	405	246	1,803	1,918	1,508
Hawaii	1,810	1,719	10,767	10,463	10,202	534	480	3,132	2,813	2,913
Puerto Rico ⁶	3,151	---	18,283	---	---	---	---	---	---	---

¹Figures for marriages are marriage licenses issued for some counties.

²Excludes figures for State(s) shown below as not available.

³Figures include adjustments for varying length of reporting periods; see Technical notes.

⁴Figures for marriages are marriage licenses issued.

⁵Figures for divorces include estimates for some counties.

⁶Data for Puerto Rico are not included in U.S. total figures.

NOTES: Figures include all revisions received from the States. Cumulative figures for the current year reflect revisions received for previous months, and figures for earlier years may differ from those previously published.

Table 4. Provisional number of deaths under 1 year and infant mortality rates: Each division and State, 12 months ending with July 1994 and 1995

[Data are estimates by State of residence; see Technical notes. Infant mortality rates are deaths under 1 year per 1,000 live births in specified area]

Area	12 months ending with July			
	1995		1994	
	Number	Rate	Number	Rate
New England	1,767	15.8	1,062	5.9
Maine	93	6.6	78	5.3
New Hampshire	87	6.0	91	6.0
Vermont	45	6.3	32	4.6
Massachusetts	462	5.6	422	5.0
Rhode Island	80	6.2	93	6.9
Connecticut	---	---	346	7.5
Middle Atlantic	11,999	17.4	4,489	8.1
New York	---	---	2,255	8.1
New Jersey	820	7.2	974	8.2
Pennsylvania	1,179	7.6	1,260	8.0
East North Central	5,450	8.7	5,800	9.1
Ohio	1,314	8.6	1,468	9.3
Indiana	774	9.6	753	9.1
Illinois	1,686	9.0	1,837	9.7
Michigan	1,169	8.5	1,198	8.6
Wisconsin	507	7.5	544	8.0
West North Central	1,940	7.5	2,008	7.8
Minnesota	429	6.8	469	7.3
Iowa	266	6.5	236	6.5
Missouri	605	8.1	628	8.1
North Dakota	58	6.7	62	7.1
South Dakota	120	11.1	120	11.2
Nebraska	186	7.9	186	8.2
Kansas	276	7.6	307	8.2
South Atlantic	5,767	8.7	6,007	9.0
Delaware	76	7.3	79	7.6
Maryland	661	8.9	663	9.2
District of Columbia	156	17.1	188	19.3
Virginia	713	7.5	730	7.8
West Virginia	153	7.2	148	6.7
North Carolina	1,044	10.0	1,001	9.9
South Carolina	447	9.1	490	9.3
Georgia	1,047	9.4	1,150	10.4
Florida	1,470	7.8	1,558	8.1
East South Central	2,136	9.4	2,130	9.3
Kentucky	372	7.3	436	8.4
Tennessee	727	9.8	636	8.5
Alabama	616	10.1	634	10.4
Mississippi	421	10.1	424	10.1
West South Central	3,594	7.4	3,850	8.2
Arkansas	272	8.0	311	9.1
Louisiana	653	9.6	661	9.7
Oklahoma	393	8.6	441	9.4
Texas ²	2,276	6.8	2,437	7.5
Mountain	1,721	7.1	1,766	7.2
Montana	95	8.5	94	8.4
Idaho	116	6.7	122	7.1
Wyoming	51	7.9	40	6.1
Colorado	361	6.9	374	6.9
New Mexico	221	8.1	265	9.4
Arizona	517	7.4	539	7.8
Utah	228	5.9	204	5.4
Nevada	132	6.8	128	5.9
Pacific	4,559	6.3	4,822	6.5
Washington	404	5.1	459	5.9
Oregon	274	6.3	287	6.7
California ²	3,689	6.4	3,870	6.6
Alaska	70	6.8	76	6.0
Hawaii	122	6.6	130	6.7
Puerto Rico ³	---	---	---	---

¹Excludes figures for State shown below as not available.²Figures include adjustments for varying length of reporting periods; see Technical notes.³Data for Puerto Rico are not included in U.S. total figures.

NOTES: Figures include all revisions received from the States. Figures for the current year reflect revisions received for previous months, and figures for earlier years may differ from those previously published.

Table 5. Provisional number of deaths and death rates, by age, race, and sex, and age-adjusted death rates by race and sex: United States, June 1994 and 1995, cumulative figures 1994 and 1995, and 12 months ending with June 1994 and 1995

[Data are provisional, estimated from a 10-percent sample of deaths. Age-specific rates on an annual basis per 100,000 population in specified group; age-adjusted rates per 100,000 U.S. standard million population; see Technical notes. Because of rounding of estimates, figures may not add to totals. For method of computation and information on standard errors of the estimates, see Technical notes]

Age, race, and sex	June				January–June				12 months ending with June			
	1995		1994		1995		1994		1995		1994	
	Number	Rate	Number	Rate	Number	Rate	Number	Rate	Number	Rate	Number	Rate
All races, both sexes¹												
All ages	180,000	834.6	176,000	824.4	1,185,000	912.0	1,172,000	909.7	2,299,000	878.6	2,279,000	878.8
Under 1 year	} 3,670	77.4	4,030	85.5	15,000	² 789.9	15,900	² 810.5	30,600	² 796.5	32,100	² 814.0
1–4 years					3,840	48.8	3,810	48.3	7,210	45.5	7,140	45.1
5–14 years					3,840	20.4	4,000	21.5	8,400	22.2	8,500	22.8
15–24 years					2,990	101.2	2,690	90.9	16,340	91.8	16,900	94.7
25–34 years	4,390	130.6	4,960	145.6	28,770	141.6	28,430	138.0	58,820	143.1	59,450	142.8
35–44 years	7,950	227.8	8,390	245.0	50,290	239.8	49,090	238.7	101,640	241.4	98,200	237.9
45–54 years	10,900	428.1	10,310	421.0	71,500	468.9	66,740	455.1	140,530	460.6	134,020	456.7
55–64 years	18,510	1,066.3	18,930	1,095.7	119,060	1,138.4	121,560	1,167.2	237,290	1,126.5	239,590	1,141.9
65–74 years	38,240	2,481.1	38,000	2,468.9	249,260	2,681.2	251,220	2,707.4	482,600	2,574.4	489,840	2,619.0
75–84 years	50,700	5,545.7	49,150	5,450.2	336,810	6,134.9	332,730	6,141.6	648,900	5,880.9	641,140	5,887.4
85 years and over	42,660	14,333.9	39,940	14,024.1	289,890	16,254.4	282,130	16,530.1	546,430	15,259.1	533,750	15,570.3
Not stated	100	...	60	...	580	...	310	...	930	...	810	...
Age-adjusted rate ³	481.5	...	484.4	...	519.4	...	522.5	...	507.0	...	510.7
All races, male¹												
All ages	92,180	874.8	90,820	868.9	599,000	944.1	597,170	949.1	1,168,420	914.8	1,169,110	923.2
Under 1 year	} 2,000	82.4	2,290	94.9	8,350	² 856.3	9,200	² 919.8	16,870	² 859.0	18,770	² 930.6
1–4 years					2,210	55.3	2,230	55.4	4,220	52.1	4,120	50.9
5–14 years					2,330	24.2	2,310	24.4	5,060	26.1	5,060	26.5
15–24 years					2,270	150.6	2,060	136.4	12,490	137.5	13,080	143.5
25–34 years	3,120	185.8	3,720	218.3	21,080	207.5	20,440	198.6	43,300	210.7	43,580	209.3
35–44 years	5,340	308.5	5,820	342.6	34,810	334.8	34,370	337.0	70,440	337.3	68,260	333.4
45–54 years	6,790	545.9	6,410	535.5	44,990	604.1	41,900	584.4	88,600	594.6	84,520	589.3
55–64 years	11,250	1,363.8	11,620	1,415.6	71,270	1,434.4	74,620	1,508.3	143,190	1,430.9	146,120	1,466.2
65–74 years	21,950	3,205.6	21,680	3,182.6	141,950	3,438.2	144,790	3,527.9	274,320	3,297.1	281,730	3,407.1
75–84 years	25,310	7,141.4	24,080	6,952.4	164,990	7,765.8	162,790	7,835.0	316,490	7,422.4	315,830	7,570.2
85 years and over	14,090	16,939.6	13,100	16,296.9	94,170	18,907.4	91,280	18,963.1	178,260	17,843.8	173,750	18,005.2
Not stated	70	...	40	...	360	...	170	...	610	...	460	...
Age-adjusted rate ³	619.4	...	626.5	...	665.6	...	675.9	...	651.4	...	662.0
All races, female¹												
All ages	87,930	796.2	85,640	781.9	586,190	881.4	575,610	872.9	1,130,190	844.0	1,110,830	836.9
Under 1 year	} 1,670	72.1	1,740	75.6	6,650	² 715.0	6,660	² 695.0	13,660	² 729.3	13,350	² 691.7
1–4 years					1,630	42.8	1,580	41.1	2,990	38.7	3,020	39.0
5–14 years					1,520	16.5	1,680	18.7	3,340	18.1	3,440	18.9
15–24 years					730	50.5	630	43.5	3,850	44.1	3,820	43.8
25–34 years	1,270	75.6	1,240	72.8	7,690	75.6	7,980	77.5	15,520	75.5	15,870	76.3
35–44 years	2,610	148.4	2,580	149.5	15,480	146.5	14,720	141.9	31,200	147.0	29,940	143.9
45–54 years	4,110	315.6	3,900	311.5	26,510	339.7	24,850	331.5	51,930	332.7	49,510	330.0
55–64 years	7,260	796.9	7,310	806.2	47,790	870.6	46,940	858.7	94,100	851.0	93,470	848.5
65–74 years	16,290	1,902.1	16,320	1,902.5	107,310	2,076.2	106,440	2,057.0	208,280	1,997.5	208,110	1,994.7
75–84 years	25,380	4,534.4	25,070	4,513.4	171,810	5,105.6	169,940	5,088.7	332,410	4,910.0	325,310	4,843.1
85 years and over	28,580	13,332.9	26,840	13,130.4	195,720	15,222.7	190,850	15,567.1	368,160	14,258.7	360,000	14,610.4
Not stated	30	...	20	...	220	...	140	...	320	...	350	...
Age-adjusted rate ³	367.7	...	366.0	...	398.2	...	395.6	...	386.7	...	385.4
White												
All ages	155,850	870.1	152,230	856.0	1,020,840	946.0	1,010,560	943.4	1,975,640	909.0	1,960,400	908.8
Under 1 year	} 2,590	68.9	2,700	72.2	9,850	² 660.6	10,290	² 668.5	19,910	² 662.1	20,660	² 666.9
1–4 years					2,590	42.0	2,530	40.5	4,820	38.5	4,880	38.9
5–14 years					2,760	18.4	2,820	19.1	5,960	19.8	6,210	20.9
15–24 years					2,100	89.1	1,940	82.1	11,410	80.2	11,960	83.8
25–34 years	3,090	112.5	3,600	129.1	20,500	123.3	20,060	118.9	41,790	124.3	42,410	124.3
35–44 years	5,860	201.6	5,930	207.8	35,500	203.2	34,340	200.3	72,590	206.8	69,200	200.9
45–54 years	8,450	388.0	8,000	381.2	55,040	421.8	51,530	409.9	107,870	412.9	103,430	410.9
55–64 years	15,180	1,011.7	15,280	1,021.2	96,710	1,069.2	99,200	1,099.1	193,380	1,061.0	195,620	1,075.3
65–74 years	33,440	2,445.5	33,090	2,420.2	215,190	2,607.7	217,870	2,641.8	416,620	2,502.8	423,780	2,548.3
75–84 years	45,870	5,533.3	44,630	5,462.2	303,420	6,094.3	299,520	6,101.3	584,300	5,838.9	577,190	5,848.5
85 years and over	39,190	14,475.1	37,010	14,227.1	267,410	16,472.1	260,250	16,697.5	503,030	15,435.1	491,690	15,708.9
Not stated	80	...	50	...	450	...	190	...	690	...	530	...
Age-adjusted rate ³	460.1	...	459.8	...	491.7	...	494.8	...	479.4	...	482.9

See footnotes at end of table.

Table 5. Provisional number of deaths and death rates, by age, race, and sex, and age-adjusted death rates by race and sex: United States, June 1994 and 1995, cumulative figures 1994 and 1995, and 12 months ending with June 1994 and 1995—Con.

[Data are provisional, estimated from a 10-percent sample of deaths. Age-specific rates on an annual basis per 100,000 population in specified group; age-adjusted rates per 100,000 U.S. standard million population; see Technical notes. Because of rounding of estimates, figures may not add to totals. For method of computation and information on standard errors of the estimates, see Technical notes]

Age, race, and sex	June				January–June				12 months ending with June			
	1995		1994		1995		1994		1995		1994	
	Number	Rate	Number	Rate	Number	Rate	Number	Rate	Number	Rate	Number	Rate
White male												
All ages	79,060	899.8	77,110	884.1	510,400	964.4	507,760	966.6	993,400	932.0	993,140	938.9
Under 1 year	} 1,360	70.6	1,550	80.8	5,490	² 717.2	5,930	² 753.2	10,910	² 707.5	11,980	² 755.4
1–4 years					1,560	49.4	1,530	48.0	2,870	44.7	2,860	44.5
5–14 years					1,640	21.5	1,590	21.0	3,560	23.0	3,740	24.5
15–24 years	1,540	127.4	1,420	117.1	8,610	117.8	9,110	124.4	18,620	126.5	18,460	124.9
25–34 years	2,230	160.8	2,690	190.9	15,260	181.8	14,640	171.8	31,260	184.1	31,320	181.7
35–44 years	3,990	273.8	4,120	287.9	24,980	285.2	24,320	282.7	51,130	290.6	48,750	282.4
45–54 years	5,360	498.5	5,050	487.4	35,010	543.5	32,660	526.4	68,600	532.0	66,050	531.5
55–64 years	9,230	1,280.0	9,400	1,307.8	58,780	1,352.7	61,470	1,417.8	118,280	1,350.8	120,180	1,375.8
65–74 years	19,430	3,174.8	19,070	3,130.3	123,710	3,351.8	126,000	3,431.3	239,260	3,215.9	245,750	3,320.9
75–84 years	23,080	7,156.1	21,840	6,941.5	149,280	7,722.7	147,010	7,787.9	286,010	7,373.3	285,190	7,524.8
85 years and over	12,780	17,030.7	11,930	16,400.9	85,780	19,083.3	83,380	19,159.9	162,440	18,028.9	158,530	18,159.2
Not stated	60	...	40	...	290	...	120	...	460	...	310	...
Age-adjusted rate ³	...	590.3	...	590.9	...	629.9	...	637.9	...	615.3	...	624.5
White female												
All ages	76,790	841.4	75,120	828.9	510,440	928.4	502,790	921.0	982,240	886.9	967,260	879.8
Under 1 year	} 1,230	67.2	1,150	63.1	4,360	² 599.7	4,350	² 580.9	9,000	² 614.3	8,680	² 574.1
1–4 years					1,040	34.5	1,010	33.0	1,950	32.0	2,020	33.1
5–14 years					1,120	15.4	1,230	17.0	2,410	16.4	2,460	17.0
15–24 years	560	48.8	520	45.2	2,800	40.4	2,850	40.9	6,040	43.2	6,340	45.2
25–34 years	860	63.2	910	65.9	5,240	63.7	5,420	65.0	10,540	63.3	11,090	65.7
35–44 years	1,880	129.7	1,810	127.2	10,520	120.8	10,020	117.2	21,460	122.6	20,450	119.0
45–54 years	3,080	279.3	2,950	277.7	20,020	303.1	18,870	296.3	39,270	296.8	37,380	293.3
55–64 years	5,950	763.4	5,880	756.2	37,920	806.8	37,730	804.4	75,100	793.0	75,430	797.6
65–74 years	14,010	1,854.6	14,020	1,849.5	91,480	2,005.6	91,870	2,008.2	177,360	1,926.6	178,030	1,928.8
75–84 years	22,790	4,499.8	22,790	4,535.9	154,150	5,061.1	152,510	5,047.4	298,290	4,867.7	292,000	4,803.4
85 years and over	26,410	13,495.2	25,080	13,383.3	181,640	15,471.6	176,870	15,745.2	340,590	14,444.0	333,170	14,761.6
Not stated	20	...	10	...	160	...	70	...	230	...	220	...
Age-adjusted rate ³	...	352.4	...	349.9	...	376.6	...	375.9	...	365.6	...	365.3
Black												
All ages	21,040	773.1	21,490	801.1	144,770	884.3	143,930	892.3	284,340	863.6	283,310	873.4
Under 1 year	} 870	117.6	1,130	153.9	4,610	² 1,495.8	4,900	² 1,558.2	9,570	² 1,546.0	10,280	² 1,624.0
1–4 years					1,120	89.9	1,080	85.9	2,090	83.8	1,840	73.4
5–14 years					920	31.6	980	33.6	1,990	34.0	1,890	32.9
15–24 years	840	187.5	640	144.4	4,330	160.6	4,340	162.6	9,320	171.8	9,290	172.9
25–34 years	1,180	264.7	1,180	263.2	7,550	279.8	7,340	271.4	15,360	282.0	15,080	275.7
35–44 years	1,920	451.3	2,260	547.2	13,520	529.2	13,700	552.9	26,490	517.2	26,700	537.4
45–54 years	2,160	815.1	2,050	813.5	14,450	913.7	13,670	907.3	28,680	908.7	27,440	912.2
55–64 years	2,790	1,598.9	3,230	1,882.1	19,560	1,864.0	19,640	1,902.6	38,460	1,823.6	38,810	1,867.7
65–74 years	4,230	3,188.7	4,490	3,405.8	30,150	3,776.5	29,790	3,754.5	58,210	3,622.3	58,760	3,677.1
75–84 years	4,160	6,120.1	3,890	5,743.7	29,010	7,101.7	29,220	7,176.6	56,370	6,857.7	55,930	6,837.4
85 years and over	2,880	12,788.3	2,620	12,958.0	19,430	14,374.0	19,180	15,813.6	37,590	13,819.9	37,010	15,168.0
Not stated	10	120	...	110	...	220	...	270	...
Age-adjusted rate ³	...	686.4	...	726.5	...	785.3	...	795.2	...	769.7	...	782.0
Black male												
All ages	11,400	883.2	12,130	953.1	77,480	998.0	78,840	1,030.2	152,930	979.4	155,100	1,008.1
Under 1 year	} 550	146.5	670	179.9	2,520	² 1,610.9	2,960	² 1,850.6	5,330	² 1,697.5	6,200	² 1,931.5
1–4 years					590	94.3	560	90.3	1,150	91.0	1,020	80.3
5–14 years					600	41.3	590	41.4	1,270	42.8	1,070	36.8
15–24 years	680	303.8	550	248.3	3,450	256.9	3,490	261.7	7,420	273.8	7,530	280.4
25–34 years	780	370.0	920	433.7	5,270	413.6	5,130	400.3	10,760	417.7	10,880	420.6
35–44 years	1,240	624.7	1,560	809.7	8,950	750.7	9,360	809.3	17,560	735.0	18,000	777.2
45–54 years	1,260	1,049.3	1,200	1,050.3	8,890	1,238.3	8,220	1,202.0	17,860	1,249.0	16,510	1,211.3
55–64 years	1,750	2,309.3	2,010	2,687.4	10,910	2,390.9	11,650	2,587.3	21,710	2,370.1	22,980	2,536.4
65–74 years	2,220	4,019.3	2,330	4,262.9	15,980	4,813.1	16,680	5,070.3	30,720	4,598.8	31,880	4,815.7
75–84 years	1,920	7,760.8	1,860	7,619.5	13,460	9,070.2	13,590	9,285.3	26,180	8,785.2	26,100	8,877.6
85 years and over	970	14,938.8	1,050	17,993.0	6,770	17,281.3	6,580	18,688.8	12,830	16,240.5	12,760	17,971.8
Not stated	10	70	...	50	...	140	...	150	...
Age-adjusted rate ³	...	915.1	...	997.0	...	1,031.8	...	1,073.7	...	1,016.1	...	1,051.4

See footnotes at end of table.

Table 5. Provisional number of deaths and death rates, by age, race, and sex, and age-adjusted death rates by race and sex: United States, June 1994 and 1995, cumulative figures 1994 and 1995, and 12 months ending with June 1994 and 1995—Con.

[Data are provisional, estimated from a 10-percent sample of deaths. Age-specific rates on an annual basis per 100,000 population in specified group; age-adjusted rates per 100,000 U.S. standard million population; see Technical notes. Because of rounding of estimates, figures may not add to totals. For method of computation and information on standard errors of the estimates, see Technical notes]

Age, race, and sex	June				January–June				12 months ending with June			
	1995		1994		1995		1994		1995		1994	
	Number	Rate	Number	Rate	Number	Rate	Number	Rate	Number	Rate	Number	Rate
Black female												
All ages	9,640	673.7	9,360	663.9	67,290	781.9	65,090	767.7	131,420	759.2	128,210	752.0
Under 1 year	} 320	87.8	460	127.0	2,090	² 1,377.3	1,940	² 1,251.1	4,240	² 1,390.2	4,080	² 1,307.7
1–4 years					530	87.1	520	86.3	940	76.5	820	66.3
5–14 years					320	22.3	390	27.7	720	25.0	830	29.3
15–24 years	160	71.4	100	*	880	66.0	860	63.6	1,900	70.0	1,760	65.5
25–34 years	400	170.3	260	110.1	2,270	160.5	2,220	155.6	4,600	160.2	4,200	145.7
35–44 years	680	299.6	700	317.7	4,570	335.6	4,340	329.0	8,930	326.7	8,700	328.1
45–54 years	890	614.2	850	617.0	5,560	642.4	5,450	661.6	10,810	626.3	10,920	663.8
55–64 years	1,040	1,053.6	1,220	1,260.0	8,650	1,457.6	7,990	1,371.7	16,750	1,404.0	15,830	1,350.7
65–74 years	2,010	2,596.1	2,160	2,798.7	14,170	3,038.5	13,120	2,824.7	27,490	2,927.6	26,870	2,870.7
75–84 years	2,230	5,158.1	2,040	4,709.7	15,540	5,971.5	15,630	5,995.5	30,190	5,761.5	29,830	5,692.7
85 years and over	1,910	11,917.1	1,580	10,984.8	12,650	13,186.5	12,600	14,651.1	24,750	12,823.8	24,250	14,017.3
Not stated	–	...	–	...	50	...	60	...	80	...	120	...
Age-adjusted rate ³	506.3	...	520.7	...	595.0	...	581.3	...	578.2	...	573.5

¹Includes races other than white and black.

²Death rates "under 1 year" (based on population estimates) differ from infant mortality rates (based on live births); see table 9 for infant mortality rates.

³For method of computation, see Technical notes.

NOTES: Figures include all revisions received from the States. Cumulative and 12-month figures for the current year reflect revisions received for previous months, and figures for earlier years may differ from those previously published. Data include adjustments for New Jersey and New York City, which are not included in the sample for June 1995.

Table 6. Provisional number of deaths and death rates for 72 selected causes and Human immunodeficiency virus infection: United States, June 1994 and 1995, cumulative figures 1994 and 1995, and 12 months ending with June 1994 and 1995

[Data are provisional, estimated from a 10-percent sample of deaths. Rates on an annual basis per 100,000 estimated population. Because of rounding of estimates, figures may not add to totals. For method of computation and information on standard errors of the estimates, see Technical notes. For explanation of asterisks preceding cause-of-death category numbers, see Technical notes]

Cause of death (Ninth Revision, International Classification of Diseases, 1975)	June		1994		January–June		1994		12 months ending with June		1994	
	1995		1994		1995		1994		1995		1994	
	Number	Rate	Number	Rate	Number	Rate	Number	Rate	Number	Rate	Number	Rate
All causes	180,000	834.6	176,000	824.4	1,185,000	912.0	1,172,000	909.7	2,299,000	878.6	2,279,000	878.8
Shigellosis and amebiasis	—	*	—	*	—	*	10	*	—	*	10	*
Certain other intestinal infections	70	*	40	*	310	0.2	410	0.3	650	0.2	670	0.3
Tuberculosis	40	*	110	0.5	720	0.5	780	0.6	1,400	0.5	1,430	0.6
Tuberculosis of respiratory system	30	*	80	*	530	0.4	620	0.5	1,000	0.4	1,140	0.4
Other tuberculosis	10	*	30	*	190	0.1	160	0.1	390	0.1	290	0.1
Whooping cough	—	*	—	*	—	*	20	*	—	*	20	*
Streptococcal sore throat, scarlatina, and erysipelas	—	*	—	*	10	*	—	*	10	*	—	*
Meningococcal infection	60	*	40	*	230	0.2	170	0.1	360	0.1	280	0.1
Septicemia	1,610	7.5	1,330	6.2	11,210	8.6	10,550	8.2	20,560	7.9	20,740	8.0
Acute poliomyelitis	—	*	—	*	—	*	—	*	—	*	—	*
Measles	—	*	—	*	—	*	10	*	—	*	10	*
Viral hepatitis	290	1.3	240	1.1	1,730	1.3	1,310	1.0	3,230	1.2	2,540	1.0
Syphilis	20	*	10	*	100	*	70	*	130	0.0	150	0.1
All other infectious and parasitic diseases ¹	3,460	16.0	3,500	16.3	24,220	18.6	22,480	17.4	48,520	18.5	44,930	17.3
Malignant neoplasms, including neoplasms of lymphatic and hematopoietic tissues	43,560	201.8	43,000	200.9	267,680	206.0	265,890	206.3	540,340	206.5	534,610	206.1
Malignant neoplasms of lip, oral cavity, and pharynx	730	3.4	550	2.6	4,200	3.2	3,770	2.9	8,180	3.1	7,920	3.1
Malignant neoplasms of digestive organs and peritoneum	10,320	47.8	9,850	46.0	62,160	47.8	62,040	48.1	127,030	48.6	125,440	48.4
Malignant neoplasms of respiratory and intrathoracic organs	12,530	58.1	11,870	55.4	77,140	59.3	75,470	58.6	155,650	59.5	153,270	59.1
Malignant neoplasm of breast	3,530	16.4	3,500	16.3	21,960	16.9	21,870	17.0	44,220	16.9	44,200	17.0
Malignant neoplasms of genital organs	4,840	22.4	5,330	24.9	30,320	23.3	30,610	23.7	61,660	23.6	60,900	23.5
Malignant neoplasms of urinary organs	1,810	8.4	1,670	7.8	11,920	9.2	11,260	8.7	22,580	8.6	22,440	8.7
Malignant neoplasms of all other and unspecified sites	5,170	24.0	5,910	27.6	32,430	24.9	33,820	26.2	66,100	25.3	67,640	26.1
Leukemia	1,600	7.4	1,480	6.9	9,830	7.6	9,970	7.7	19,840	7.6	19,260	7.4
Other malignant neoplasms of lymphatic and hematopoietic tissues	3,030	14.0	2,830	13.2	17,710	13.6	17,090	13.3	35,080	13.4	33,540	12.9
Benign neoplasms, carcinoma in situ, and neoplasms of uncertain behavior and of unspecified nature	730	3.4	570	2.7	4,630	3.6	3,880	3.0	8,430	3.2	7,930	3.1
Diabetes mellitus	4,500	20.8	4,190	19.6	30,330	23.3	28,350	22.0	57,250	21.9	54,860	21.2
Nutritional deficiencies	190	0.9	270	1.3	1,850	1.4	1,630	1.3	3,410	1.3	3,350	1.3
Anemias	320	1.5	260	1.2	2,230	1.7	1,980	1.5	4,400	1.7	4,220	1.6
Meningitis	30	*	60	*	440	0.3	550	0.4	830	0.3	940	0.4
Major cardiovascular diseases	72,300	335.0	72,380	338.1	489,200	376.4	489,180	379.6	939,200	359.0	939,730	362.3
Diseases of heart	55,540	257.3	56,640	264.6	379,040	291.7	380,910	295.6	728,870	278.6	734,310	283.1
Rheumatic fever and rheumatic heart disease	320	1.5	500	2.3	2,650	2.0	3,010	2.3	5,160	2.0	5,650	2.2
Hypertensive heart disease	1,930	8.9	1,650	7.7	12,330	9.5	12,050	9.3	24,060	9.2	22,900	8.8
Hypertensive heart and renal disease	130	0.6	200	0.9	1,310	1.0	1,040	0.8	2,470	0.9	2,170	0.8
Ischemic heart disease	35,920	166.4	37,760	176.4	248,040	190.9	252,220	195.7	477,960	182.7	484,360	186.7
Acute myocardial infarction	16,650	77.1	17,370	81.1	113,360	87.2	118,180	91.7	220,300	84.2	227,700	87.8
Other acute and subacute forms of ischemic heart disease	190	0.9	130	0.6	1,340	1.0	1,280	1.0	2,740	1.0	2,750	1.1
Angina pectoris	40	*	60	*	350	0.3	460	0.4	800	0.3	830	0.3
Old myocardial infarction and other forms of chronic ischemic heart disease	19,040	88.2	20,200	94.4	132,980	102.3	132,300	102.7	254,120	97.1	253,070	97.6
Other diseases of endocardium	1,340	6.2	890	4.1	8,150	6.3	7,170	5.6	15,480	5.9	14,250	5.5
All other forms of heart disease	15,890	73.6	15,640	73.1	106,550	82.0	105,430	81.8	203,740	77.9	204,980	79.0
Hypertension with or without renal disease	1,040	4.8	730	3.4	6,600	5.1	5,630	4.4	11,740	4.5	10,740	4.1
Cerebrovascular diseases	12,370	57.3	11,660	54.5	81,330	62.6	79,430	61.6	155,840	59.6	151,010	58.2
Intracerebral and other intracranial hemorrhage	1,660	7.7	1,400	6.5	11,110	8.5	10,640	8.2	21,580	8.2	20,460	7.9
Cerebral thrombosis and unspecified occlusion of cerebral arteries	970	4.5	1,160	5.4	7,150	5.5	7,850	6.1	14,280	5.5	15,500	6.0
Cerebral embolism	60	*	80	*	270	0.2	490	0.4	710	0.3	700	0.3

See footnotes at end of table.

Table 6. Provisional number of deaths and death rates for 72 selected causes and Human immunodeficiency virus infection: United States, June 1994 and 1995, cumulative figures 1994 and 1995, and 12 months ending with June 1994 and 1995—Con.

[Data are provisional, estimated from a 10-percent sample of deaths. Rates on an annual basis per 100,000 estimated population. Because of rounding of estimates, figures may not add to totals. For method of computation and information on standard errors of the estimates, see Technical notes. For explanation of asterisks preceding cause-of-death category numbers, see Technical notes]

Cause of death (Ninth Revision, International Classification of Diseases, 1975)	June		1994		January–June		1994		12 months ending with June		1994	
	1995	1994	1995	1994	1995	1994	1995	1994	1995	1994	1995	1994
	Number	Rate	Number	Rate	Number	Rate	Number	Rate	Number	Rate	Number	Rate
All other and late effects of cerebrovascular diseases430,433,435–438	9,670	44.8	9,010	42.1	62,800	48.3	60,450	46.9	119,270	45.6	114,350	44.1
Atherosclerosis440	1,390	6.4	1,190	5.5	8,880	6.8	9,350	7.2	16,950	6.5	17,400	6.7
Other diseases of arteries, arterioles, and capillaries441–448	1,970	9.1	2,150	10.0	13,340	10.3	13,860	10.8	25,810	9.9	26,280	10.1
Acute bronchitis and bronchiolitis466	40	*	40	*	370	0.3	410	0.3	490	0.2	600	0.2
Pneumonia and influenza480–487	5,440	25.2	5,490	25.6	45,240	34.8	47,780	37.1	79,290	30.3	82,680	31.9
Pneumonia480–486	5,440	25.2	5,440	25.4	44,840	34.5	46,550	36.1	78,870	30.1	81,210	31.3
Influenza487	–	*	50	*	400	0.3	1,230	1.0	420	0.2	1,470	0.6
Chronic obstructive pulmonary disease and allied conditions490–496	8,170	37.9	7,100	33.2	57,220	44.0	55,580	43.1	102,800	39.3	100,650	38.8
Bronchitis, chronic and unspecified490–491	220	1.0	200	0.9	1,710	1.3	2,010	1.5	3,310	1.3	3,590	1.4
Emphysema492	1,440	6.7	1,270	5.9	9,910	7.6	9,260	7.2	17,880	6.8	17,210	6.6
Asthma493	450	2.1	370	1.7	3,030	2.3	2,830	2.2	5,410	2.1	4,960	1.9
Other chronic obstructive pulmonary diseases and allied conditions494–496	6,050	28.0	5,270	24.6	42,560	32.7	41,490	32.2	76,190	29.1	74,890	28.9
Ulcer of stomach and duodenum531–533	370	1.7	540	2.5	3,080	2.4	3,330	2.6	5,760	2.2	5,890	2.3
Appendicitis540–543	30	*	60	*	220	0.2	150	0.1	390	0.1	340	0.1
Hernia of abdominal cavity and intestinal obstruction without mention of hernia550–553,560	580	2.7	520	2.4	3,320	2.5	2,960	2.3	6,320	2.4	5,910	2.3
Chronic liver disease and cirrhosis571	2,070	9.6	2,130	9.9	12,980	10.0	12,840	9.9	25,800	9.9	25,400	9.8
Cholelithiasis and other disorders of gallbladder574–575	170	0.8	200	0.9	1,360	1.0	1,360	1.0	2,600	1.0	2,670	1.0
Nephritis and nephrotic syndrome, and nephrosis580–589	1,940	9.0	1,770	8.3	13,440	10.3	12,710	9.9	25,420	9.7	24,000	9.3
Acute glomerulonephritis and nephrotic syndrome580–581	10	*	20	*	130	0.1	150	0.1	220	0.1	320	0.1
Chronic glomerulonephritis, nephritis and nephropathy, not specified as acute or chronic, and renal sclerosis, unspecified582–583,587	90	*	130	0.6	620	0.5	800	0.6	1,430	0.5	1,540	0.6
Renal failure, disorders resulting from impaired renal function, and small kidney of unknown cause584–586,588–589	1,840	8.5	1,610	7.5	12,690	9.8	11,770	9.1	23,770	9.1	22,140	8.5
Infections of kidney590	90	*	50	*	390	0.3	550	0.4	870	0.3	1,030	0.4
Hyperplasia of prostate600	20	*	10	*	200	0.1	190	0.1	410	0.2	400	0.2
Complications of pregnancy, childbirth, and the puerperium630–676	20	*	50	*	110	0.1	170	0.1	280	0.1	310	0.1
Pregnancy with abortive outcome630–638	–	*	10	*	–	*	50	*	10	*	80	*
Other complications of pregnancy, childbirth, and the puerperium640–676	20	*	40	*	110	0.1	120	0.1	270	0.1	230	0.1
Congenital anomalies740–759	1,060	4.9	860	4.0	5,900	4.5	5,470	4.2	12,000	4.6	11,330	4.4
Certain conditions originating in the perinatal period760–779	1,140	5.3	1,170	5.5	6,650	5.1	7,020	5.4	13,810	5.3	15,060	5.8
Birth trauma, intrauterine hypoxia, birth asphyxia, and respiratory distress syndrome767–769	200	0.9	210	1.0	940	0.7	1,210	0.9	2,110	0.8	2,700	1.0
Other conditions originating in the perinatal period760–766,770–779	940	4.4	960	4.5	5,710	4.4	5,810	4.5	11,690	4.5	12,360	4.8
Symptoms, signs, and ill-defined conditions780–799	2,860	13.2	3,180	14.9	20,690	15.9	20,300	15.7	40,640	15.5	39,220	15.1
All other diseasesResidual	16,630	77.1	15,120	70.6	109,330	84.1	104,700	81.3	208,100	79.5	201,240	77.6
Accidents and adverse effectsE800–E949	7,540	34.9	7,400	34.6	42,310	32.5	42,130	32.7	88,560	33.8	89,110	34.4
Motor vehicle accidentsE810–E825	3,570	16.5	3,540	16.5	19,830	15.2	19,250	14.9	42,630	16.3	41,850	16.1
All other accidents and adverse effectsE800–E807,E826–E949	3,960	18.3	3,860	18.0	22,480	17.3	22,880	17.7	45,930	17.6	47,260	18.2
SuicideE950–E959	2,670	12.4	2,830	13.2	15,410	11.8	15,290	11.9	30,690	11.7	30,680	11.8
Homicide and legal interventionE960–E978	1,820	8.4	1,800	8.4	11,020	8.5	11,460	8.9	23,250	8.9	24,600	9.5
All other external causesE980–E999	280	1.3	180	0.8	1,090	0.8	1,110	0.8	2,430	0.9	2,400	0.9
Human immunodeficiency virus infection ²*042–*044	2,960	13.7	2,970	13.9	20,770	16.0	19,090	14.8	41,990	16.0	38,060	14.7

¹Includes data for deaths due to Human immunodeficiency virus infection (category numbers *042–*044) shown separately below; see Technical notes.

²Included in All other infectious and parasitic diseases shown above.

NOTES: Figures include all revisions received from the States. Cumulative and 12-month figures for the current year reflect revisions received for previous months, and figures for earlier years may differ from those previously published. Data include adjustments for New Jersey and New York City, which are not included in the sample for June 1995.

Table 7. Provisional number of deaths and death rates for 16 selected subcategories of Malignant neoplasms, including neoplasms of lymphatic and hematopoietic tissues: United States, June 1994 and 1995, cumulative figures 1994 and 1995, and 12 months ending with June 1994 and 1995

[Data are provisional, estimated from a 10-percent sample of deaths. Rates on an annual basis per 100,000 estimated population. Because of rounding of estimates, figures may not add to totals. For method of computation and information on standard errors of the estimates, see Technical notes]

Cause of death (Ninth Revision, International Classification of Diseases, 1975)	June				January–June				12 months ending with June			
	1995		1994		1995		1994		1995		1994	
	Number	Rate	Number	Rate	Number	Rate	Number	Rate	Number	Rate	Number	Rate
Malignant neoplasms, including neoplasms of lymphatic and hematopoietic tissues ¹140–208	43,560	201.8	43,000	200.9	267,680	206.0	265,890	206.3	540,340	206.5	534,610	206.1
Malignant neoplasm of esophagus150	880	4.1	980	4.6	5,290	4.1	5,810	4.5	10,660	4.1	11,230	4.3
Malignant neoplasm of stomach151	1,010	4.7	1,130	5.3	6,780	5.2	6,610	5.1	13,790	5.3	13,700	5.3
Malignant neoplasms of colon, rectum, rectosigmoid junction, and anus153,154	4,710	21.8	4,470	20.9	28,120	21.6	28,460	22.1	58,310	22.3	57,400	22.1
Malignant neoplasm of pancreas157	2,380	11.0	1,890	8.8	13,630	10.5	13,170	10.2	27,210	10.4	26,650	10.3
Malignant neoplasms of trachea, bronchus, and lung162	12,180	56.4	11,460	53.5	74,490	57.3	72,930	56.6	150,260	57.4	147,990	57.1
Malignant melanoma of skin172	670	3.1	650	3.0	3,720	2.9	3,690	2.9	7,160	2.7	7,230	2.8
Malignant neoplasm of cervix uteri180	390	1.8	390	1.8	2,130	1.6	2,260	1.7	4,460	1.7	4,810	1.9
Malignant neoplasms of body of uterus and of uterus, part unspecified179,182	450	2.1	540	2.5	2,870	2.2	3,000	2.3	5,750	2.2	5,980	2.3
Malignant neoplasm of ovary183.0	980	4.5	1,200	5.6	6,860	5.3	6,580	5.1	13,960	5.3	12,810	4.9
Malignant neoplasm of prostate185	2,920	13.5	3,060	14.3	17,550	13.5	17,720	13.7	35,570	13.6	35,280	13.6
Malignant neoplasm of bladder188	880	4.1	800	3.7	6,110	4.7	5,600	4.3	11,150	4.3	11,160	4.3
Malignant neoplasms of kidney and other and unspecified urinary organs189	930	4.3	870	4.1	5,810	4.5	5,650	4.4	11,440	4.4	11,280	4.3
Malignant neoplasms of brain and other and unspecified parts of nervous system191,192	890	4.1	1,170	5.5	5,480	4.2	5,830	4.5	11,790	4.5	11,340	4.4
Hodgkin's disease201	90	*	90	*	750	0.6	730	0.6	1,550	0.6	1,480	0.6
Malignant lymphoma other than Hodgkin's disease200,202	1,840	8.5	1,950	9.1	11,570	8.9	11,270	8.7	22,860	8.7	22,130	8.5
Multiple myeloma and other immunoproliferative neoplasms203	1,090	5.0	790	3.7	5,390	4.1	5,100	4.0	10,670	4.1	9,930	3.8

¹Includes figures for subcategories not shown below.

NOTES: Figures include all revisions received from the States. Cumulative and 12-month figures for the current year reflect revisions received for previous months, and figures for earlier years may differ from those previously published. Data include adjustments for New Jersey and New York City, which are not included in the sample for June 1995.

Table 8. Provisional number of deaths and death rates for Injury by firearms: United States, June 1994 and 1995, cumulative figures 1994 and 1995, and 12 months ending with June 1994 and 1995

[Data are provisional, estimated from a 10-percent sample of deaths. Rates on an annual basis per 100,000 estimated population. Because of rounding of estimates, figures may not add to totals. For method of computation and information on standard errors of the estimates, see Technical notes]

Cause of death (Ninth Revision, International Classification of Diseases, 1975)	June				January–June				12 months ending with June			
	1995		1994		1995		1994		1995		1994	
	Number	Rate	Number	Rate	Number	Rate	Number	Rate	Number	Rate	Number	Rate
Injury by firearmsE922,E955.0–E955.4,E965.0–965.4,E970,E985.0–E985.4	2,900	13.4	3,360	15.7	17,810	13.7	18,740	14.5	37,440	14.3	39,250	15.1
Accident caused by firearm missileE922	70	*	160	0.7	600	0.5	700	0.5	1,450	0.6	1,530	0.6
Suicide by firearmsE955.0–E955.4	1,510	7.0	1,840	8.6	9,250	7.1	9,750	7.6	18,880	7.2	19,620	7.6
Homicide and legal intervention by firearmsE965.0–E965.4,E970	1,310	6.1	1,340	6.3	7,820	6.0	8,180	6.4	16,780	6.4	17,800	6.9
Injury by firearms, undetermined whether accidentally or purposely inflictedE985.0–E985.4	20	*	30	*	140	0.1	110	0.1	320	0.1	310	0.1

NOTES: Figures include all revisions received from the States. Cumulative and 12-month figures for the current year reflect revisions received for previous months, and figures for earlier years may differ from those previously published. Data include adjustments for New Jersey and New York City, which are not included in the sample for June 1995.

Table 9. Provisional number of deaths under 1 year and infant mortality rates, by age and for 10 selected causes: United States, June 1994 and 1995, cumulative figures 1994 and 1995, and 12 months ending with June 1994 and 1995

[Data are provisional, estimated from a 10-percent sample of deaths. Rates on an annual basis per 100,000 live births. Because of rounding of estimates, figures may not add to totals. For method of computation and information on standard errors of the estimates, see Technical notes]

Age and cause of death (Ninth Revision, International Classification of Diseases, 1975)	June				January–June				12 months ending with June			
	1995		1994		1995		1994		1995		1994	
	Number	Rate	Number	Rate	Number	Rate	Number	Rate	Number	Rate	Number	Rate
Total, under 1 year	2,400	746.1	2,500	786.5	15,000	773.8	15,900	811.4	30,600	772.7	32,100	804.9
Under 28 days	1,540	481.3	1,620	502.8	9,370	482.9	9,550	488.4	19,470	492.8	20,590	516.0
28 days to 11 months	850	265.6	920	285.5	5,630	290.1	6,320	323.2	11,060	279.9	11,520	288.7
Certain gastrointestinal diseases008–009,535,555–558	20	*	20	*	120	6.2	110	5.6	270	6.8	220	5.5
Pneumonia and influenza480–487	20	*	30	*	210	10.8	300	15.3	360	9.1	450	11.3
Congenital anomalies740–759	470	146.9	510	158.3	3,250	167.5	3,170	162.1	6,850	173.4	6,620	165.9
Disorders relating to short gestation and unspecified low birthweight765	260	81.3	300	93.1	1,850	95.3	1,970	100.7	3,740	94.7	4,060	101.7
Birth trauma767	10	*	30	*	70	*	130	6.6	150	3.8	200	5.0
Intrauterine hypoxia and birth asphyxia768	70	*	30	*	250	12.9	220	11.3	590	14.9	540	13.5
Respiratory distress syndrome769	110	34.4	150	46.6	580	29.9	850	43.5	1,300	32.9	1,920	48.1
Other conditions originating in the perinatal period760–764,766,770–779	670	209.4	640	198.6	3,770	194.3	3,690	188.7	7,800	197.4	8,070	202.2
Sudden infant death syndrome798.0	290	90.6	330	102.4	1,690	87.1	1,910	97.7	3,390	85.8	3,860	96.7
All other causesResidual	470	146.9	510	158.3	3,200	164.9	3,520	180.0	6,070	153.6	6,200	155.4

NOTES: Figures include all revisions received from the States. Cumulative and 12-month figures for the current year reflect revisions received for previous months, and figures for earlier years may differ from those previously published. Data include adjustments for New Jersey and New York City, which are not included in the sample for June 1995.

Technical notes

Nature and sources of data

Data in this report are provisional unless otherwise specified and include only events occurring within the United States (50 States and the District of Columbia). Mortality data exclude fetal deaths. Data for the Commonwealth of Puerto Rico are not included in the U.S. totals.

Birth, death, and infant death figures in tables 2 and 4 for each State are estimates by State of residence. These estimates are derived by applying adjustment ratios to the actual counts of certificates for all events occurring in the State and received in registration offices during a 1-month period regardless of date of the event. The adjustment ratios for each data year represent the observed relationship between final State occurrence and residence figures for the three most recent years for which final data were available and are expressed as a single ratio for each State. As in previous years, monthly State marriage and divorce figures represent the actual count of all events occurring in the State (State of occurrence) that were received in the registration offices during the 1-month period. Delay in the receipt of certificates in a registration office may result in a low State figure for a given month followed by a high figure for the month(s) in which the delayed records are received. Data for previous months and cumulative data include revised figures received from the States.

Figures for births, deaths, and infant deaths for California in tables 2 and 4 contain adjustments for varying lengths of State reporting periods. Figures for Texas for all events shown in tables 2–4 also are adjusted for varying lengths of State reporting periods. The figures for both States are adjusted by the ratio between the number of days in the data month and the number of days in the State reporting period. The adjusted figures are included in the U.S. totals shown elsewhere in this report.

U.S. totals for births, deaths, and infant deaths are based on the State estimates by State of residence and, therefore, in effect, exclude events to nonresidents of the United States. Events to nonresidents of the United States are

included in all marriage and divorce figures. The effect of excluding events to nonresidents from the U.S. totals is small.

Provisional totals for the United States include estimates for State data shown as not available. Provisional totals for births and marriages for the entire United States include adjustments for observed differences between provisional and final monthly figures.

Divorce figures include reported annulments. The monthly national divorce estimate is obtained by multiplying the total for the reporting areas by the ratio observed between the most recent final annual divorce total for the United States and the provisional total for the reporting areas combined.

Random variation—Although the counts in this report are not subject to sampling variability (except the Current Mortality Sample), they may be affected by random variation. When the number of events is small and the probability of such an event is small, considerable caution must be observed in interpreting the data. Such infrequent events may be assumed to follow a Poisson probability distribution. For this distribution a simple approximation may be used to estimate the random variation as follows:

If N is the number of events in the population and R is the corresponding rate, the chances are 19 in 20 that

$$1. N - 2\sqrt{N} \text{ and } N + 2\sqrt{N}$$

covers the “true” number of events.

$$2. R - 2\frac{R}{\sqrt{N}} \text{ and } R + 2\frac{R}{\sqrt{N}}$$

covers the “true” rate.

If the rate R_1 corresponding to N_1 events is compared with the rate R_2 corresponding to N_2 events, the difference between the two rates may be regarded as statistically significant at the 0.05 level if it exceeds

$$2\sqrt{\frac{R_1^2}{N_1} + \frac{R_2^2}{N_2}}$$

Additional information on random variation in numbers of events, rates, and ratios may be found in the technical appendixes of *Vital Statistics of the United States, 1990, Volumes I and II*.

Rates

Rates are on an annual basis and, except for infant mortality rates, are per 1,000 or 100,000 estimated population residing in the United States. The populations used for computing these rates are furnished by the U.S. Bureau of the Census. Rates shown in this report beginning with 1992 were computed using populations based on the 1990 Census enumeration comparable to those used for final data. Monthly rates are based on populations estimated for the specific month. Year-to-date rates are averages of monthly rates that have been weighted by the number of days in the corresponding months. Rates for 12-month periods are the sum of events for the period per population estimated at the midpoint of the period.

Infant mortality rates are deaths under 1 year of age for the specified period (monthly, year-to-date, or 12-month period) per 1,000 or 100,000 live births. Births used for computing monthly and year-to-date infant mortality rates are adjusted for monthly variation in the number of births. Births used to compute 12-month rates do not contain this adjustment. Births used for computing infant mortality rates are not corrected for observed differences between provisional and final monthly figures as described earlier in “Nature and sources of data.” Because monthly infant mortality rates are based on relatively few events, they are highly variable. Therefore, comparisons of monthly infant mortality rates should be interpreted cautiously; see “Random variation.”

Age-adjusted death rates are used to compare relative mortality risks across groups and over time. However, they should be viewed as constructs or indexes rather than as direct or actual measures of mortality risk. Statistically, they are weighted averages of the age-specific death rates, where the weights represent the fixed population proportions by age. See chapter 5 of an earlier report (1). The age-adjusted death rates presented in this report were computed by the direct method, that is, by applying age-specific death rates to the U.S. standard million population (2). See also chapter 10 of an earlier report (1). Age groups in table 5 were used to compute the age-adjusted

rates shown in that table. It is important not to compare age-adjusted rates with crude rates.

Current Mortality Sample

The Current Mortality Sample (CMS) is a 10-percent systematic sample of death certificates drawn each month after the certificates are counted in the State registration offices. Deaths and death rates for the United States by age, race, sex, and cause are estimated based on the sample. Because of the additional time required to select and process the certificates, data based on the CMS are published 1 month after publication of the U.S. and State counts. Complete information concerning the underlying cause of death sometimes is not available when the sample is drawn. As a result estimates based on sample counts for certain causes are biased. Correction for bias is not made in this report but is made in the annual summary (issue number 13 in this series) each year.

Estimated numbers of deaths based on the sample were proportionately adjusted to be consistent with estimates based on the count of death certificates received in State registration offices.

HIV infection—Beginning with data for 1987, the National Center for Health Statistics introduced category numbers *042–*044 for classifying and coding Human immunodeficiency virus (HIV) infection. The asterisks before the category numbers indicate that these codes

are not part of the *Ninth Revision, International Classification of Diseases*. Deaths classified to these categories are included in All other infectious and parasitic diseases in the List of 72 Selected Causes of Death and are also shown separately at the bottom of table 6.

Sampling variability—Because the estimates of deaths and death rates presented in this report with the exception of total deaths and deaths under 1 year are based on a sample of death certificates, they are subject to sampling variability. The estimated relative standard error in the following table is a measure of the

Relative standard errors for estimated numbers of deaths from the Current Mortality Sample expressed as a percent of the estimate

Estimated number of deaths	Relative standard error of estimate (as percent)	
	170,000 estimated deaths each month	2,000,000 estimated deaths each year
10	94.9	94.9
20	67.1	67.1
50	42.4	42.4
100	30.0	30.0
200	21.2	21.2
500	13.4	13.4
1,000	9.5	9.5
2,000	6.7	6.7
5,000	4.2	4.2
10,000	2.9	3.0
20,000	2.0	2.1
50,000	1.1	1.3
100,000	0.6	0.9
200,000	0.6
500,000	0.4
1,000,000	0.2

sampling error of the estimated number of deaths (or of the estimated death rate) expressed as a percent of the estimate. The first column refers to monthly estimates; the second to annual; cumulative year-to-date totals fall between the two.

The chances are about 2 in 3 that the percent difference between an estimate and the result of a complete count is less than the percent shown. The chances are about 19 in 20 that the percent difference is less than twice the percent shown. A figure based on 100 or fewer estimated deaths has a relative standard error of 30 percent or more and is, therefore, considered unreliable. A rate based on 100 or fewer estimated deaths has been replaced by an asterisk.

Unless otherwise specified comparisons made in the text between death rates based on the CMS were statistically significant at the 0.05 level of significance. Lack of comment in the text about any two rates does not mean that the difference was tested and found not to be significant at this level.

References

1. Feinleib M, Zarate AO, eds. Reconsidering age adjustment procedures: Workshop proceedings. National Center for Health Statistics. Vital Health Stat 4(29). 1992.
2. Grove RD, Hetzel AM. Vital statistics rates in the United States, 1940–1960. Public Health Service. Washington: National Center for Health Statistics. 1968.

Suggested citation

National Center for Health Statistics. Births, marriages, divorces, and deaths for July 1995. Monthly vital statistics report; vol 44 no 7. Hyattsville, Maryland: Public Health Service. 1996.

Copyright information

All material appearing in this report is in the public domain and may be reproduced or copied without permission; citation as to source, however, is appreciated.

National Center for Health Statistics

Acting Director
Jack R. Anderson

Acting Deputy Director
Jennifer H. Madans, Ph.D.

Division of Vital Statistics

Director
Mary Anne Freedman

**DEPARTMENT OF
HEALTH & HUMAN SERVICES**

Public Health Service
Centers for Disease Control and Prevention
National Center for Health Statistics
6525 Belcrest Road
Hyattsville, Maryland 20782

FIRST CLASS MAIL POSTAGE & FEES PAID PHS/NCHS PERMIT NO. G-281

OFFICIAL BUSINESS
PENALTY FOR PRIVATE USE, \$300

To receive this publication regularly, contact the National Center for Health Statistics by calling 301-436-8500
E-mail: nchsquery@nch10a.em.cdc.gov
Internet: <http://www.cdc.gov/nchswwww/nchshome.htm>

DHHS Publication No. (PHS) 96-1120
6-0140 (2/96)