

PERINATAL CEREBRAL INFARCTION ICD-10-CM CODE CHANGES

Edward Liechty, MD, FAAP

American Academy of Pediatrics

Committee on Coding and Nomenclature

Representative to ICD-10

American Academy of Pediatrics

DEDICATED TO THE HEALTH OF ALL CHILDREN®



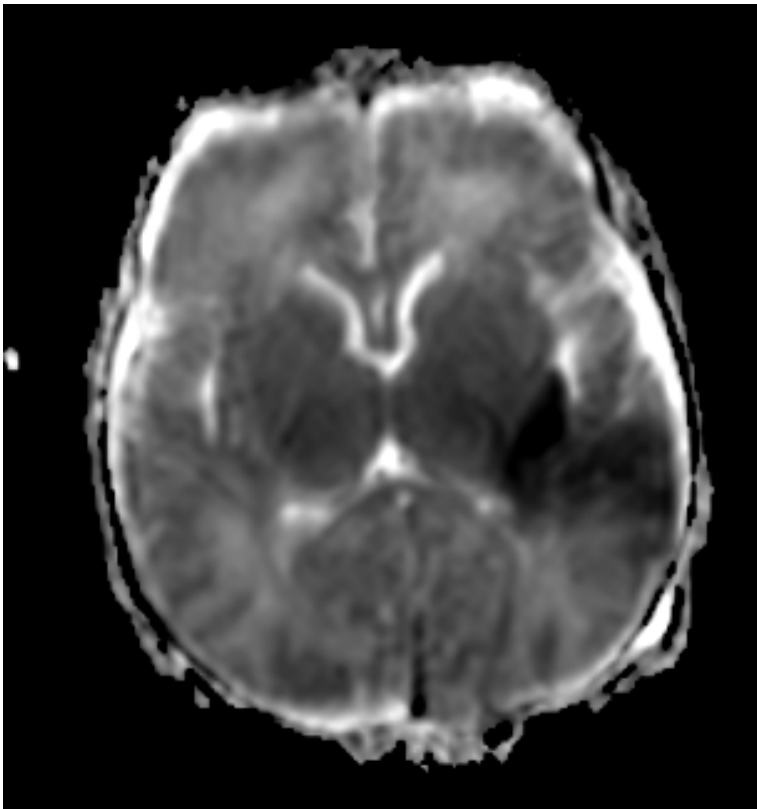
Clinical Presentation

- Most commonly presents as neonate with seizures or abnormal neurologic exam
- Incidence 1:2500-5000
 - Incidence is increasing due to more sensitive neuroimaging; e.g. MRI
- Etiology and timing usually unclear.
 - Many likely occur in utero



CLINICAL DOCUMENTATION

MRI – day 4



Notes in EMR

- Radiologist - Acute (within days) infarct involving the left frontoparietal lobes and posterior left insula corresponding to the left MCA posterior division vascular territory.
- Attending neurologist - . Perinatal left MCA stroke P91.0 Unclear etiology at this time.

Why do we need a new ICD code?

- Currently coded as
 - P91.0 - Cerebral Ischemia
 - I60-I69 - Cerebrovascular diseases
 - Based on Signs/Symptoms such as seizures, hypotonia
- P91.0 fails to show the severity of the condition (ie, ischemia is always found w/ infarctions) but not all ischemia leads to infarction
- I60-I69 fail to distinguish from strokes occurring in older patients
- Need for tracking, obtaining services such as First Steps early intervention programs



Code Proposal

P91.8 Other specified disturbances of cerebral status of newborn

New sub-
category

P91.82 Neonatal cerebral infarction

Add Neonatal stroke

Add Perinatal arterial ischemic stroke

Add Perinatal cerebral infarction

Add **Excludes 1:** cerebral infarction (I63.-)

Add **Excludes 2:** intracranial hemorrhage of newborn (P52.-)

New code P91.821 Neonatal cerebral infarction, right side

New code P91.822 Neonatal cerebral infarction, left side

New code P91.823 Neonatal cerebral infarction, bilateral

New code P91.829 Neonatal cerebral infarction, unspecified side

CODE PROPOSAL

I63 Cerebral infarction

- Includes: occlusion and stenosis of cerebral and precerebral arteries, resulting in cerebral infarction
- Add **Excludes 1**: neonatal cerebral infarction (P91.82-)

P91 Other disturbances of cerebral status of newborn

P91.0 Neonatal cerebral ischemia

Add **Excludes 1**: Neonatal cerebral infarction
(P91.82-)

