

Adjustment of Hospital Utilization Rates

United States, 1965–80

This report presents rates of discharges from short-stay non-Federal hospitals by age and sex for 1965–80 calculated using the civilian noninstitutionalized and civilian resident population. The estimates of number of discharges are based on data abstracted from a national sample of records of discharged patients. Changes in discharge rates that result from the choice of population estimates are discussed, and a ratio for converting rates based on the civilian noninstitutionalized population to rates based on the civilian resident population is provided. Trends in discharge rates from 1965–82 are described.

**Data From the National Health
Survey
Series 13, No. 81**

DHHS Publication No. (PHS) 85–1742

U.S. Department of Health and Human
Services
Public Health Service
National Center for Health Statistics
Hyattsville, Md.
December 1984

Copyright Information

All material appearing in this report is in the public domain and may be reproduced or copied without permission; citation as to source, however, is appreciated.

Suggested Citation

National Center for Health Statistics, R. Pokras and L. J. Kozak:
Adjustment of hospital rates, United States, 1965-80. *Vital and Health Statistics*. Series 13, No. 81. DHHS Pub. No. (PHS) 85-1742. Public Health Service. Washington. U.S. Government Printing Office, Dec. 1984.

Library of Congress Cataloging in Publication Data

Pokras, Robert.

Adjustment of hospital utilization rates—United States, 1965-80.

(Data from the national health survey. Series 13; no. 81) (DHHS publication ; no. (PHS) 85-1742)

Written by Robert Pokras and Lola Jean Kozak.

Bibliography: p.

Supt. of Docs.: HE 20.6209:13/81

1. Hospital utilization—United States—Length of stay—Statistics. 2. Hospital patients—United States—

Statistics. I. Kozak, Lola Jean. II. National Center for Health Statistics (U.S.) III. Title. IV. Series:

Vital and health statistics. Series 13. Data from the national health survey ; no. 81. V. Series:

DHHS publication ; no. (PHS) 85-1742. [DNLM:

1. Hospitals—utilization—United States—statistics.

2. Patient Discharge—United States—statistics.

W2 A N148vm no. 81]

RA981.A2P62 1984 362.11'0973 84-600283

ISBN 0-8406-0303-7 (pbk.)

National Center for Health Statistics

Manning Feinleib, M.D., Dr.P.H., *Director*

Robert A. Israel, *Deputy Director*

Jacob J. Feldman, Ph.D., *Associate Director for Analysis and Epidemiology*

Garrie J. Losee, *Associate Director for Data Processing and Services*

Alvan O. Zarate, Ph.D., *Assistant Director for International Statistics*

E. Earl Bryant, *Associate Director for Interview and Examination Statistics*

Robert L. Quave, *Acting Associate Director for Management*

Gail F. Fisher, Ph.D., *Associate Director for Program Planning, Evaluation, and Coordination*

Monroe G. Sirken, Ph.D., *Associate Director for Research and Methodology*

Peter L. Hurley, *Associate Director for Vital and Health Care Statistics*

Alice Haywood, *Information Officer*

Vital and Health Care Statistics Program

Peter L. Hurley, *Associate Director*

Gloria Kapantais, *Assistant to the Director for Data Policy, Planning, and Analysis*

Division of Health Care Statistics

W. Edward Bacon, Ph.D., *Director*

Joan F. Van Nostrand, *Deputy Director*

Mary A. Moien, *Chief, Hospital Care Statistics Branch*

Manoochehr K. Nozary, *Chief, Technical Services Branch*

Cooperation of the U.S. Bureau of the Census

Under the legislation establishing the National Health Survey, the Public Health Service is authorized to use, insofar as possible, the services or facilities of other Federal, State, or private agencies.

In accordance with specifications established by the National Center for Health Statistics, the U.S. Bureau of the Census, under a contractual arrangement, participated in planning the survey and collecting the data.

Contents

Introduction	1
Discussion	2
Background	2
Changes in rates	2
Use of the detailed tables	4
Trends in discharge rates	7
References	8
List of detailed tables	9
Appendixes	
I. Technical notes on methods	37
II. Definitions of terms	40
III. Publications of data from the National Hospital Discharge Survey	41
List of text figures	
1. Rates per 1,000 civilian noninstitutionalized and civilian resident population of patients, excluding newborn infants, discharged from short-stay hospitals by year: United States, 1965–82	3
2. Rates per 1,000 civilian noninstitutionalized and civilian resident population of patients, excluding newborn infants, discharged from short-stay hospitals by sex and year: United States, 1965–82	4
3. Rates per 1,000 civilian noninstitutionalized and civilian resident population of patients, excluding newborn infants, discharged from short-stay hospitals by age and year: United States, 1965–82	5
Text table	
A. Rates of patients discharged by age based on the civilian noninstitutionalized population, civilian resident population estimated from the 1970 census, and civilian resident population adjusted after the 1980 census: United States, 1976	6

Symbols

- - - Data not available
 - . . . Category not applicable
 - Quantity zero
 - 0.0 Quantity more than zero but less than 0.05
 - Z Quantity more than zero but less than 500 where numbers are rounded to thousands
 - * Figure does not meet standards of reliability or precision
 - # Figure suppressed to comply with confidentiality requirements
-

Adjustment of Hospital Utilization Rates

by Robert Pokras and Lola Jean Kozak, Division of Health Care Statistics

Introduction

The National Center for Health Statistics has collected data on patients discharged from short-stay non-Federal hospitals by means of the National Hospital Discharge Survey since 1965. Throughout the period of 1965–80, the estimates of rates of discharges and days of care were calculated using civilian noninstitutionalized population estimates from the U.S. Bureau of the Census. Beginning with 1981 data, however, the civilian resident population replaced the civilian noninstitutionalized population as the denominator for estimating hospital utilization rates. In this report previously published hospital discharge rates based on the civilian noninstitutionalized population are presented along with revised rates calculated using the civilian resident population for 1965–80 by sex and age.

The National Hospital Discharge Survey is a continuous survey of patients discharged from noninstitutional general

and specialty hospitals, excluding military and Veterans Administration hospitals, that have an average length of stay of less than 30 days. Data are collected in the survey about characteristics of the patients, their lengths of stay, diagnoses, surgical procedures, and the size, location, and ownership of the hospitals from which they are discharged. The patient data are abstracted from the face sheets of a sample of inpatient medical records in a sample of hospitals. For example, in 1965, 296 hospitals participated in the survey submitting approximately 100,000 abstracts, and in 1980, 420 hospitals took part in the survey supplying about 224,000 abstracts. Appendix I contains a brief description of the sample design, data collection procedures, and estimation process. A report has been published that provides a detailed description of the National Hospital Discharge Survey design and estimation techniques.¹

Discussion

Background

A rationale for use of the civilian noninstitutionalized population (CNP) to calculate rates from National Hospital Discharge Survey (NHDS) data is not provided in published or unpublished documents on the survey design or data analysis of the NHDS. The CNP may have been chosen so that rates produced from the various population-based surveys of the National Center for Health Statistics would be consistent. For the two population-based surveys begun before 1965 (the National Health Interview Survey and the National Health and Nutrition Examination Survey, originally the Health Examination Survey), the CNP had already been selected to compute rates.

The choice of population also may have been influenced by the exclusion from the survey of hospital units of institutions, such as infirmaries in State mental hospitals and prison hospitals. If persons in institutions were treated for medical problems exclusively in institutional hospitals, their hospitalizations would not be within the scope of the survey. It would, therefore, have seemed logical to use population estimates that excluded institutionalized persons. However, because institutions are not usually equipped to perform the diagnostic or surgical procedures necessary to treat many illnesses, persons in institutions are admitted to short-stay hospitals. This is especially true of nursing homes, which frequently transfer patients to short-stay hospitals for treatment of acute conditions. Thus, institutionalized persons should be considered within the scope of the survey, and because they were not included in the population estimates used to calculate NHDS rates, the rates of hospital use published from 1965–80 were generally overestimated.

This problem first came to light because of discrepancies in the hospital utilization rates from the NHDS and the Medicare program. Medicare is a nationwide health program primarily providing health benefits to persons 65 years of age and over. The program reimburses hospital charges in part or full for about 92 percent of the discharges of patients 65 years of age and over from non-Federal short-stay hospitals. National estimates of the hospital use of Medicare patients are derived from a 20-percent sample of Medicare records. In the late 1970's the Medicare hospital utilization rates were found to be lower than the NHDS rates, and although the difference in rates was not statistically significant, the discrepancy was consistent from year to year.

In a detailed examination of these two sets of hospital utilization rates, it was found that the estimated total numbers of discharges from the two sources were comparable, taking into account that the Medicare program served only part of patients

65 years of age and over. It was evident then, that the population estimates were the source of the rate differences. The Medicare rates were based on the Medicare enrollment population, which included institutionalized persons, but the NHDS population estimates excluded this segment of the population. When the discharge rates from NHDS data were recomputed using the civilian resident population (CRP) rather than the CNP, the results were more comparable to those from Medicare data. Consideration of these findings led to the recognition that the CRP more accurately reflected the population at risk.

Changes in rates

In general, the discharge rates based on the CRP were lower than the rates based on the CNP. As can be seen in figure 1, the effect on total discharge rates was small. From 1965 through 1969 there was less than a 1 percent difference in the two sets of rates. The difference grew in the 1970's, but still reached only 3.3 percent in 1979. The effects on the discharge rates of males and females were similar (figure 2), reflected in lower rates based on the CRP than based on the CNP for both sexes.

The change in population had different effects on the discharge rates of different age groups (figure 3). For the group under 15 years of age, rates based on the CRP were higher than rates based on the CNP from 1965 through 1969. This results from using more current CRP data (adjusted from the 1970 census) than CNP data, as is discussed in more detail later. For all the other age groups, and the group under 15 years of age after 1969, the CRP-based rates were lower than the CNP-based rates. The changes in rates were small for the groups 15–44 years and 45–64 years of age. For the group 65–74 years of age, CRP-based rates were between 4.9 and 5.6 percent lower than CNP-based rates in the 1960's, but the difference decreased to between 2.5 and 3.1 percent in the 1970's. For the group 75 years of age and over, differences in the CRP- and CNP-based rates were between 5.3 and 5.5 percent in the 1960's; the differences increased in the 1970's, reaching 14.1 percent in 1979.

The changes in discharge rates were not due entirely to the addition of institutionalized persons to the population. The CRP estimates in this report were based on more recent U.S. Bureau of the Census data than were available when the CNP estimates were used in earlier publications. The 1965–69 CNP estimates were based on the 1960 census, but the CRP estimates for these years were adjusted following the 1970 census. Likewise,

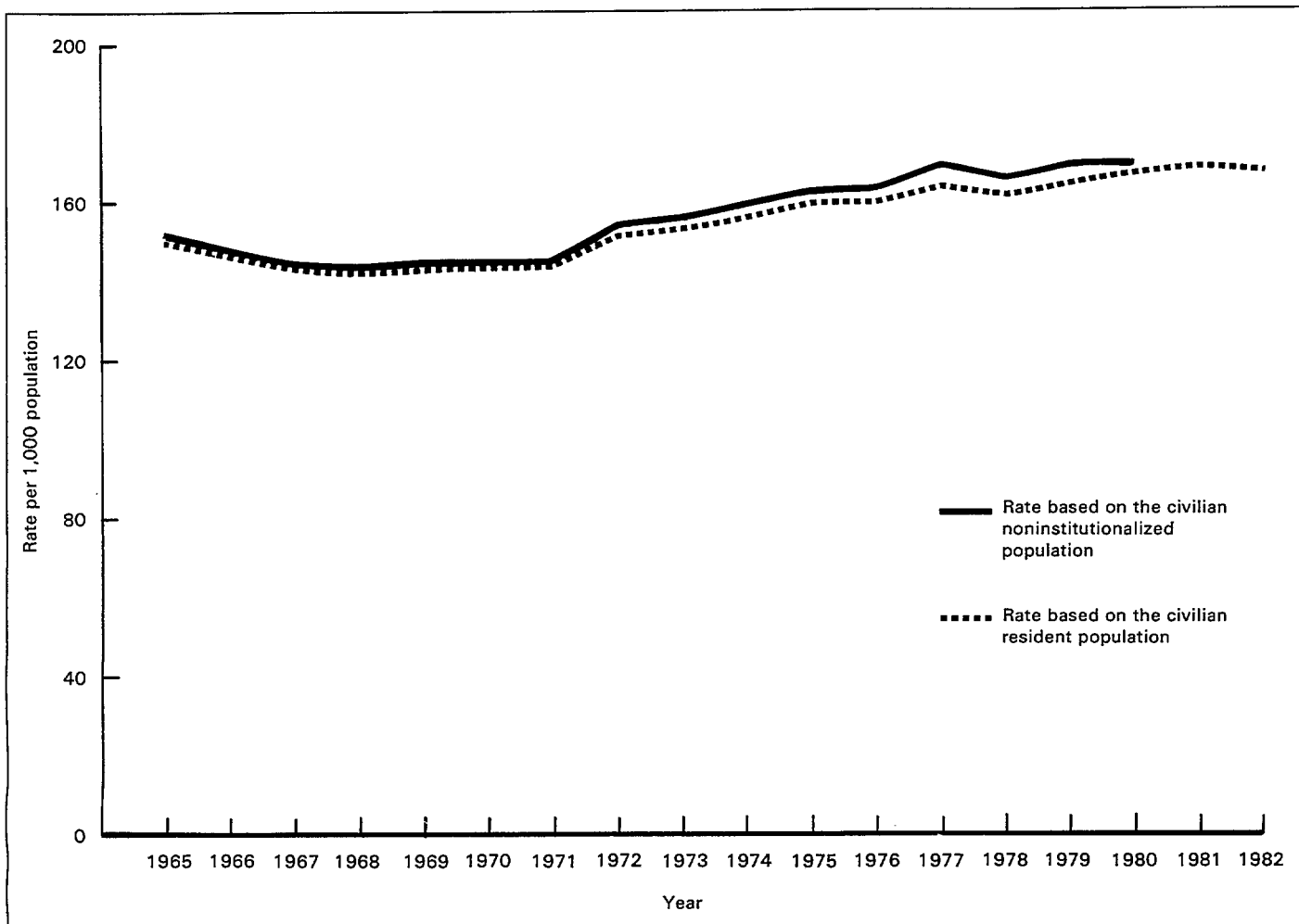


Figure 1. Rates per 1,000 civilian noninstitutionalized and civilian resident population of patients, excluding newborn infants, discharged from short-stay hospitals by year: United States, 1965-82

the 1970-79 CNP estimates were based on the 1970 census while the CRP estimates for 1970-80 were adjusted using the 1980 census data. Thus, even if the CRP had been used to compute discharge rates from 1965-79, the rates based on the adjusted CRP would have changed.

To illustrate this point, discharge rates for 1976 are presented in table A based on the CNP and CRP estimates from the 1970 census and the CRP estimates adjusted after the 1980 census. The differences in the rates based on the CNP and those based on the original CRP² show the effect of the addition of institutionalized persons to the population estimates. These differences ranged from 0.3 percent for the age group under 15 years to 2.5 percent for the group 65-74 years of age and 9.8 percent for the group 75 years of age and over. The greater effect on the older age groups would be expected because the proportion of the population that is institutionalized increases with age. The differences between the rates based on the two sets of CRP's demonstrate the effects of the adjustment of population estimates after the 1980 census. For 1976 the adjustment of the population estimate had a greater effect on the total discharge rate and the rates of age groups under 45 years of age than did the addition of institutionalized persons.

The CRP-based rates that were higher than CNP-based rates can be explained by the adjustments to the CRP following a decennial census. While the addition of institutionalized persons always increased the population estimates, the adjustments could increase or decrease them. For the age group under 15 years of age, which has a relatively small percent of institutionalized persons, adjustments that decreased estimates were not always offset by the addition of the institutionalized population. Thus, the adjusted CRP for this age group was occasionally smaller than the CNP, which made the CRP-based rates higher than the CNP-based rates.

The lack of an adjustment factor helps explain why the CNP- and CRP-based discharge rates for 1980 were generally more similar than were the two sets of rates during the 1970's. Because the 1980 CNP and CRP were both based on the 1980 census, differences in the rates for 1980 were the result only of the addition of the institutionalized population.

In addition to the population changes, discharge rates were affected by changes in the universe of hospitals sampled for NHDS. From 1965 through 1971 the hospitals sampled in the survey were only those that had been operating in 1963, but over time new hospitals had come into existence. The universe

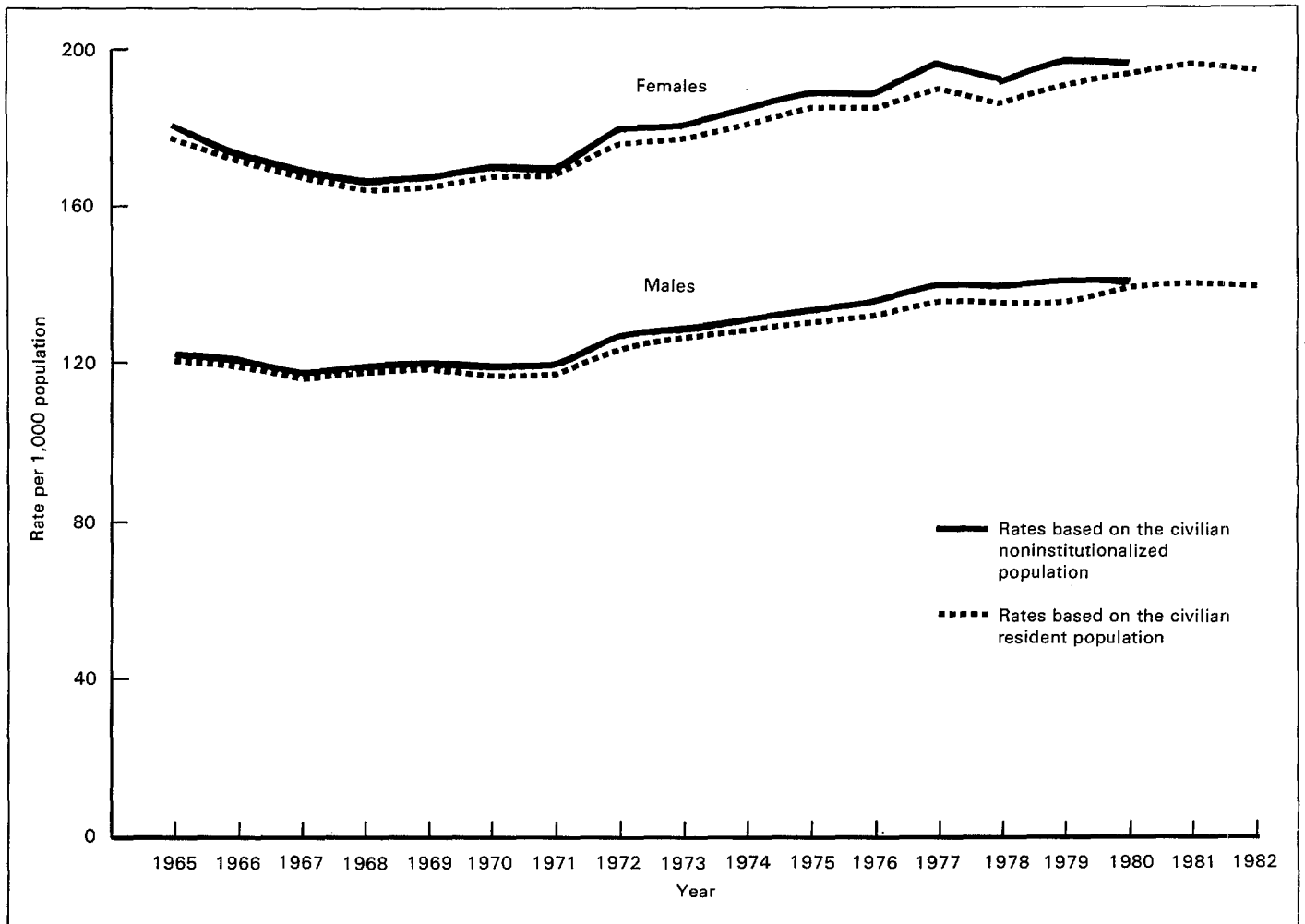


Figure 2. Rates per 1,000 civilian noninstitutionalized and civilian resident population of patients, excluding newborn infants, discharged from short-stay hospitals by sex and year: United States, 1965-82

was updated and new hospitals were added to the sample in 1972, 1975, 1977, 1979, and 1981. As a result, the estimated number of discharges jumped in each of these years, raising both the CNP- and CRP-based rates. While on the average the estimated number of discharges increased less than 2 percent a year, the 1972 estimate was up 7.4 percent, the 1975 estimate 3.1 percent, the 1977 estimate 4.5 percent, and the 1979 estimate 3.2 percent over the preceding year's estimate. These increases, especially the 1972 increase, are reflections of the updated universe as well as actual increases in the number of discharges.

Use of the detailed tables

The detailed tables in this report (tables 1-16) contain estimates of the CNP, CRP, a ratio of these two population estimates, and hospital discharge rates based on each population estimate for every year from 1965 through 1980. This information can be used to convert the CNP-based rates from earlier publications of NHDS data to rates based on CRP. A list of NHDS publications is presented in appendix III.

One way to use tables 1-16 is simply to examine the rates based on the CRP by sex or age for a year or a series of years. For example, if there is an interest in the discharge rates of males 55-64 years of age at 5-year intervals, the CRP-based rates can be taken from table 1 for 1965 (196.0), table 6 for 1970 (186.2), table 11 for 1975 (219.4), and table 16 for 1980 (228.3).

The ratio of CNP to CRP in tables 1-16 can be used as a measure of the percent increase or decrease in a CNP-based rate that results from the conversion to the CRP-based rate. The percent change is found by subtracting the ratio from one and multiplying by 100. For example, a CNP/CRP ratio of 0.940 indicates that the rate based on the CRP is 6 percent less than the CNP-based rate:

$$(1 - 0.940) \times 100 = 6$$

Thus, the magnitude of the rate change can be examined by looking at the CNP/CRP ratio.

The CNP/CRP ratio also can be used for easy conversion of additional CNP-based rates to rates based on the CRP. For

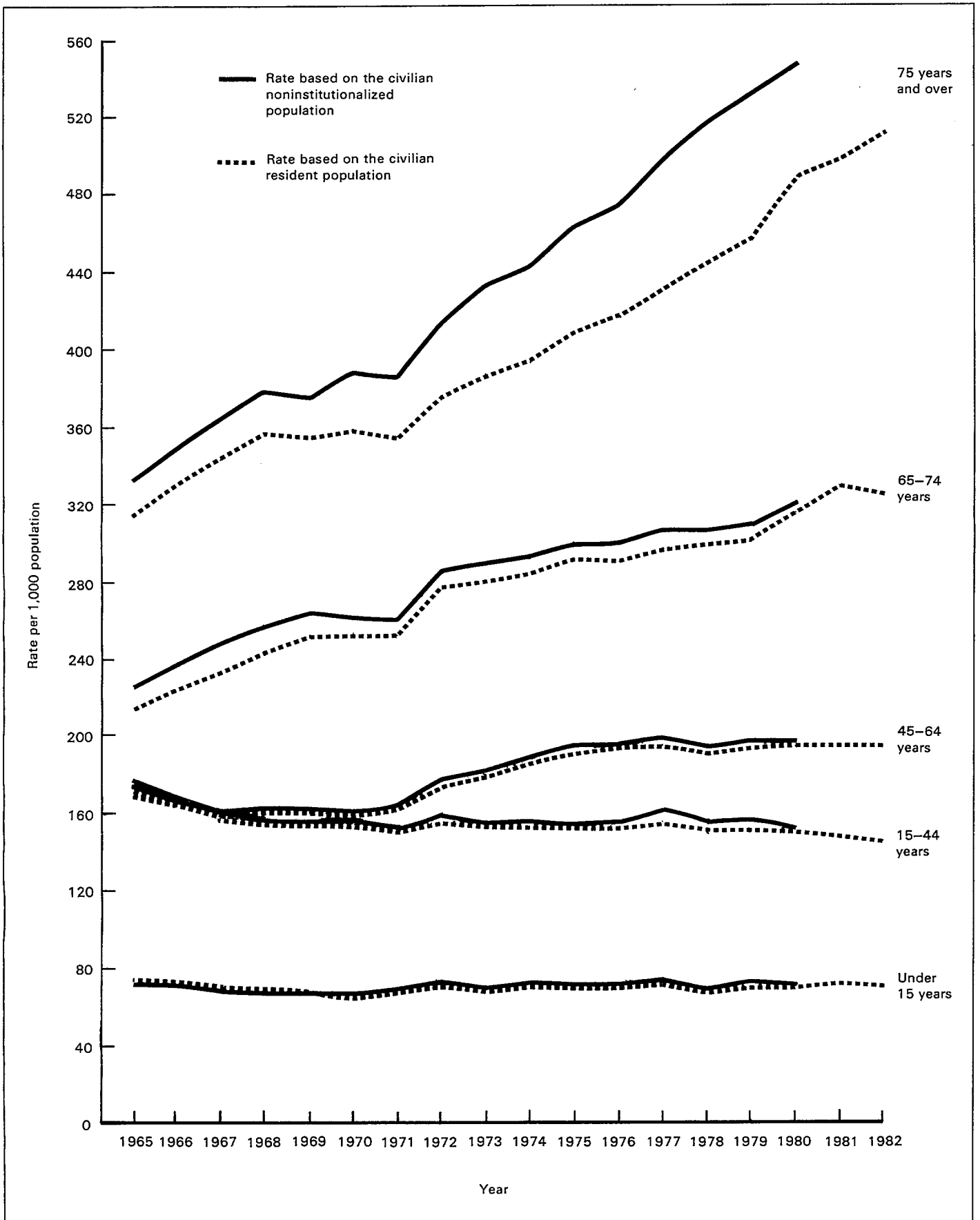


Figure 3. Rates per 1,000 civilian noninstitutionalized and civilian resident population of patients, excluding newborn infants, discharged from short-stay hospitals by age and year: United States, 1965-82

Table A. Rates of patients discharged by age based on the civilian noninstitutionalized population, civilian resident population estimated from the 1970 census, and civilian resident population adjusted after the 1980 census: United States, 1976

[Discharges from non-Federal short-stay hospitals. Excludes newborn infants]

Age	Base for calculating discharge rate		
	Civilian noninstitutionalized population, 1970 census	Civilian resident population	
		Estimated from 1970 census	Adjusted after 1980 census
	Rate of discharges per 1,000 population		
All ages	163.2	161.4	159.2
Under 15 years	71.5	71.3	70.1
15-44 years	153.2	152.0	149.8
45-64 years	195.2	193.4	192.1
65-74 years	299.0	291.6	290.7
75 years and over	473.7	431.6	417.3

example, a series of published diagnostic or surgical rates based on the CNP can be multiplied by the ratio to produce adjusted rates, and the ratio can be used regardless of the magnitude of the published rates. Rates in the NHDS publications listed in appendix III are presented per 1,000 population, per 10,000

population, or per 100,000 population, and the CNP/CRP ratio can be multiplied by any of these to produce corrected rates based on the CRP. While all of the rates derived and presented in this report pertain to discharges, these ratios also apply to rates of days of care.

Trends in discharge rates

While the focus of this report is on differences between CNP- and CRP-based discharge rates, it is interesting to note the changes in the CRP-based discharge rates over time. The discharge rates for 1981 and 1982 were included in figures 1–3 so that rates could be examined over the 18 years for which data are available from NHDS. As was discussed earlier, the NHDS sample was first updated in 1972 and probably produced underestimates of discharges for several of the preceding years.

The total discharge rate grew from 150 per 1,000 CRP in 1965 to 168 per 1,000 CRP in 1982, a 12-percent increase. The discharge rate for males increased 16 percent from 1965–82, while the rate for females increased only 9 percent. However, the female discharge rate was 48 percent higher than the male rate in 1965 and remained 40 percent higher in 1982.

The discharge rate for the group under 15 years of age changed very little during this 18-year period: It was 72 per

1,000 CRP in 1965 and 71 per 1,000 CRP in 1982. For patients 15–44 years of age discharge rates decreased 17 percent from 1965 through 1982, and 12 percent between 1965–72. The decrease between 1965–72 was probably related to the 20-percent decline in birth rates during this period.³

Discharge rates increased for patients 45 years and over from 1965–82. The group 45–64 years of age showed a rate increase of 13 percent, which was almost all during the period 1972–82. In contrast, the discharge rate for patients 65–74 years of age increased 52 percent from 1965–82, and much of this increase, 30 percent, was from 1965–72. However, the greatest rate change was for patients 75 years of age and over whose discharge rate was 314 per 1,000 CRP in 1965 and 511 per 1,000 CRP in 1982, a 63-percent increase. Patients in this age group accounted for 7 percent of all discharges in 1965, and increased to 14 percent in 1982.

References

¹National Center for Health Statistics, W. R. Simmons: Development of the design of the NCHS Discharge Survey. *Vital and Health Statistics*. Series 2, No. 39. PHS No. 1000. Public Health Service. Washington. U.S. Government Printing Office, Sept. 1970.

²U.S. Bureau of the Census: Estimates of the population of the United States, by age, sex, and race: July 1, 1974 to 1976. *Current Population Reports*. Series P-25, No. 643. Washington. U.S. Government Printing Office, Jan. 1977.

³National Center for Health Statistics: Advance report of final natality statistics, 1981. *Monthly Vital Statistics Report*. Vol. 32, No. 9 Supp. DHHS Pub. No. (PHS) 84-1120. Public Health Service. Hyattsville, Md., Dec. 1983.

⁴National Center for Health Statistics: Development and maintenance of a national inventory of hospitals and institutions. *Vital and Health*

Statistics. Series 1, No. 3. PHS Pub. No. 1000. Public Health Service. Washington. U.S. Government Printing Office, Feb. 1965.

⁵National Center for Health Statistics, M. G. Sirken: Utilization of short-stay hospitals, summary of nonmedical statistics, United States, 1965. *Vital and Health Statistics*. Series 13, No. 2. PHS Pub. No. 1000. Public Health Service. Washington. U.S. Government Printing Office, Aug. 1967.

⁶National Center for Health Statistics, M. J. Witkin: Utilization of short-stay hospitals by characteristics of discharged patients, United States, 1965. *Vital and Health Statistics*. Series 13, No. 3. PHS Pub. No. 1000. Public Health Service. Washington. U.S. Government Printing Office, Dec. 1967.

TABLE 1. ESTIMATED NUMBER OF PERSONS IN THE CIVILIAN NONINSTITUTIONALIZED AND CIVILIAN RESIDENT POPULATIONS AS OF JULY 1, 1965, RATIO OF THE CIVILIAN NONINSTITUTIONALIZED TO THE CIVILIAN RESIDENT POPULATION, AND DISCHARGE RATES FROM SHORT-STAY HOSPITALS FOR EACH POPULATION GROUP, BY SEX AND AGE: UNITED STATES, 1965

AGE	CIVILIAN NONINSTITUTIONALIZED POPULATION IN THOUSANDS			CIVILIAN RESIDENT POPULATION IN THOUSANDS		
	BOTH SEXES	MALE	FEMALE	BOTH SEXES	MALE	FEMALE
01 ALL AGES.....	189,787	91,989	97,798	191,605	92,941	98,664
02 UNDER 15 YEARS.....	59,741	30,392	29,350	59,251	30,148	29,103
03 UNDER 1 YEAR.....	3,855	1,968	1,887	3,770	1,917	1,853
04 1-4 YEARS.....	16,564	8,456	8,109	16,053	8,173	7,880
05 5-14 YEARS.....	39,322	19,968	19,354	39,427	20,058	19,369
06 15-44 YEARS.....	74,159	35,449	38,709	75,084	36,056	39,028
07 15-24 YEARS.....	28,914	13,815	15,099	29,261	14,045	15,216
08 25-34 YEARS.....	21,400	10,187	11,213	21,746	10,419	11,327
09 35-44 YEARS.....	23,845	11,447	12,397	24,077	11,592	12,485
10 45-64 YEARS.....	38,453	18,496	19,956	38,818	18,725	20,094
11 45-54 YEARS.....	21,725	10,508	11,217	21,746	10,563	11,183
12 55-64 YEARS.....	16,728	7,988	8,739	17,072	8,164	8,911
13 65 YEARS AND OVER.....	17,434	7,652	9,783	18,452	8,014	10,437
14 65-74 YEARS.....	11,233	5,034	6,200	11,887	5,321	6,565
15 75 YEARS AND OVER.....	6,201	2,618	3,583	6,565	2,693	3,872

1/ THIS CATEGORY INCLUDES SAMPLED DISCHARGES FOR WHICH SEX WAS NOT STATED.

2/ THE CATEGORY "ALL AGES" INCLUDES SAMPLED DISCHARGES FOR WHICH AGE WAS NOT STATED.

NOTE: APPARENT INCONSISTENCY BETWEEN SOME CIVILIAN NONINSTITUTIONALIZED POPULATION AND CIVILIAN RESIDENT POPULATION VALUES RESULTS FROM USING UNADJUSTED CIVILIAN NONINSTITUTIONALIZED POPULATION ESTIMATES BUT ADJUSTED CIVILIAN RESIDENT POPULATION ESTIMATES. THIS IS DISCUSSED IN DETAIL IN THE TEXT SECTION "CHANGES IN RATES."

TABLE 1. ESTIMATED NUMBER OF PERSONS IN THE CIVILIAN NONINSTITUTIONALIZED AND CIVILIAN RESIDENT POPULATIONS AS OF JULY 1, 1965, RATIO OF THE CIVILIAN NONINSTITUTIONALIZED TO THE CIVILIAN RESIDENT POPULATION, AND DISCHARGE RATES FROM SHORT-STAY HOSPITALS FOR EACH POPULATION GROUP, BY SEX AND AGE: UNITED STATES, 1965--CON.

BOTH SEXES	MALE	FEMALE	BOTH SEXES /1	MALE	FEMALE	BOTH SEXES /1	MALE	FEMALE	
RATIO OF CIVILIAN NONINSTITUTIONALIZED POPULATION TO CIVILIAN RESIDENT POPULATION			RATE OF DISCHARGES PER 1,000 CIVILIAN NONINSTITUTIONALIZED POPULATION /2			RATE OF DISCHARGES PER 1,000 CIVILIAN RESIDENT POPULATION /2			
0.991	0.990	0.991	151.7	121.3	179.8	150.3	120.1	178.2	01
1.008	1.008	1.008	71.5	79.1	63.4	72.1	79.8	63.9	02
1.023	1.027	1.018	139.3	161.2	116.3	142.4	165.5	118.5	03
1.032	1.035	1.029	79.2	89.2	68.6	81.7	92.2	70.6	04
0.997	0.996	0.999	61.6	66.8	56.0	61.4	66.5	56.0	05
0.988	0.983	0.992	177.0	97.7	249.2	174.8	96.1	247.1	06
0.988	0.984	0.992	171.9	82.9	253.0	169.8	81.6	251.1	07
0.984	0.978	0.990	203.0	97.7	298.2	199.8	95.5	295.2	08
0.990	0.987	0.993	159.9	115.6	200.1	158.3	114.2	198.7	09
0.991	0.988	0.993	174.3	169.2	178.4	172.6	167.2	177.1	10
0.999	0.995	1.003	163.4	145.6	179.6	163.3	144.9	180.1	11
0.980	0.978	0.981	188.3	200.3	176.8	184.6	196.0	173.4	12
0.945	0.955	0.937	263.9	276.3	252.8	249.3	263.8	237.0	13
0.945	0.946	0.944	226.2	238.4	215.1	213.8	225.5	203.2	14
0.945	0.972	0.925	332.1	349.1	318.1	313.7	339.4	294.3	15

TABLE 2. ESTIMATED NUMBER OF PERSONS IN THE CIVILIAN NONINSTITUTIONALIZED AND CIVILIAN RESIDENT POPULATIONS AS OF JULY 1, 1966, RATIO OF THE CIVILIAN NONINSTITUTIONALIZED TO THE CIVILIAN RESIDENT POPULATION, AND DISCHARGE RATES FROM SHORT-STAY HOSPITALS FOR EACH POPULATION GROUP, BY SEX AND AGE: UNITED STATES, 1966

AGE	BOTH SEXES			BOTH SEXES		
	MALE	FEMALE		MALE	FEMALE	
	CIVILIAN NONINSTITUTIONALIZED POPULATION IN THOUSANDS			CIVILIAN RESIDENT POPULATION IN THOUSANDS		
01 ALL AGES.....	191,634	92,597	99,037	193,420	93,512	99,908
02 UNDER 15 YEARS.....	59,868	30,458	29,410	59,259	30,161	29,098
03 UNDER 1 YEAR.....	3,649	1,862	1,787	3,555	1,812	1,743
04 1-4 YEARS.....	16,147	8,242	7,905	15,652	7,968	7,685
05 5-14 YEARS.....	40,072	20,354	19,718	40,051	20,381	19,670
06 15-44 YEARS.....	75,022	35,700	39,322	75,980	36,303	39,678
07 15-24 YEARS.....	29,778	14,098	15,680	30,147	14,334	15,813
08 25-34 YEARS.....	21,627	10,293	11,334	21,963	10,500	11,464
09 35-44 YEARS.....	23,617	11,309	12,308	23,870	11,469	12,401
10 45-64 YEARS.....	39,022	18,712	20,310	39,425	18,967	20,459
11 45-54 YEARS.....	21,999	10,606	11,393	22,023	10,669	11,355
12 55-64 YEARS.....	17,023	8,106	8,917	17,402	8,298	9,104
13 65 YEARS AND OVER.....	17,724	7,728	9,996	18,755	8,081	10,673
14 65-74 YEARS.....	11,323	5,051	6,272	11,989	5,335	6,655
15 75 YEARS AND OVER.....	6,401	2,677	3,724	6,766	2,746	4,018

1/ THIS CATEGORY INCLUDES SAMPLED DISCHARGES FOR WHICH SEX WAS NOT STATED.

2/ THE CATEGORY "ALL AGES" INCLUDES SAMPLED DISCHARGES FOR WHICH AGE WAS NOT STATED.

NOTE: APPARENT INCONSISTENCY BETWEEN SOME CIVILIAN NONINSTITUTIONALIZED POPULATION AND CIVILIAN RESIDENT POPULATION VALUES RESULTS FROM USING UNADJUSTED CIVILIAN NONINSTITUTIONALIZED POPULATION ESTIMATES BUT ADJUSTED CIVILIAN RESIDENT POPULATION ESTIMATES. THIS IS DISCUSSED IN DETAIL IN THE TEXT SECTION "CHANGES IN RATES."

TABLE 2. ESTIMATED NUMBER OF PERSONS IN THE CIVILIAN NONINSTITUTIONALIZED AND CIVILIAN RESIDENT POPULATIONS AS OF JULY 1, 1966, RATIO OF THE CIVILIAN NONINSTITUTIONALIZED TO THE CIVILIAN RESIDENT POPULATION, AND DISCHARGE RATES FROM SHORT-STAY HOSPITALS FOR EACH POPULATION GROUP, BY SEX AND AGE: UNITED STATES, 1966--CON.

BOTH SEXES			BOTH SEXES /1			BOTH SEXES /1			
MALE	FEMALE		MALE	FEMALE		MALE	FEMALE		
RATIO OF CIVILIAN NONINSTITUTIONALIZED POPULATION TO CIVILIAN RESIDENT POPULATION			RATE OF DISCHARGES PER 1,000 CIVILIAN NONINSTITUTIONALIZED POPULATION /2			RATE OF DISCHARGES PER 1,000 CIVILIAN RESIDENT POPULATION /2			
0.991	0.990	0.991	148.6	121.0	173.9	147.2	119.8	172.4	01
1.010	1.010	1.011	70.6	78.3	62.3	71.3	79.0	63.0	02
1.026	1.028	1.025	143.0	167.5	117.1	146.8	172.1	120.1	03
1.032	1.034	1.029	82.8	93.0	71.9	85.4	96.2	73.9	04
1.001	0.999	1.002	59.0	64.1	53.5	59.1	64.1	53.6	05
0.987	0.983	0.991	169.2	97.2	234.2	167.1	95.6	232.1	06
0.988	0.984	0.992	165.8	85.2	238.0	163.8	83.7	236.0	07
0.985	0.980	0.989	190.2	96.4	275.1	187.3	94.5	272.0	08
0.989	0.986	0.993	154.2	113.0	191.6	152.5	111.4	190.1	09
0.990	0.987	0.993	168.8	164.6	172.1	167.1	162.3	170.9	10
0.999	0.994	1.003	159.0	141.8	174.4	158.8	140.9	175.0	11
0.978	0.977	0.979	181.6	194.4	169.2	177.6	189.9	165.7	12
0.945	0.956	0.937	277.1	289.9	265.9	261.8	277.2	249.0	13
0.944	0.947	0.942	236.5	250.8	224.1	223.4	237.4	211.2	14
0.946	0.975	0.927	348.8	363.6	336.4	330.0	354.5	311.7	15

TABLE 3. ESTIMATED NUMBER OF PERSONS IN THE CIVILIAN NONINSTITUTIONALIZED AND CIVILIAN RESIDENT POPULATIONS AS OF JULY 1, 1967, RATIO OF THE CIVILIAN NONINSTITUTIONALIZED TO THE CIVILIAN RESIDENT POPULATION, AND DISCHARGE RATES FROM SHORT-STAY HOSPITALS FOR EACH POPULATION GROUP, BY SEX AND AGE: UNITED STATES, 1967

AGE	BOTH SEXES			BOTH SEXES		
	MALE	FEMALE		MALE	FEMALE	
	CIVILIAN NONINSTITUTIONALIZED POPULATION IN THOUSANDS			CIVILIAN RESIDENT POPULATION IN THOUSANDS		
01 ALL AGES.....	193,475	93,260	100,216	195,264	94,151	101,113
02 UNDER 15 YEARS.....	59,792	30,424	29,367	59,059	30,064	28,995
03 UNDER 1 YEAR.....	3,532	1,802	1,730	3,450	1,757	1,693
04 1-4 YEARS.....	15,622	7,975	7,647	15,112	7,695	7,418
05 5-14 YEARS.....	40,638	20,647	19,991	40,496	20,612	19,885
06 15-44 YEARS.....	75,999	36,047	39,952	77,043	36,687	40,359
07 15-24 YEARS.....	30,486	14,275	16,211	30,974	14,579	16,397
08 25-34 YEARS.....	22,121	10,555	11,567	22,414	10,730	11,684
09 35-44 YEARS.....	23,391	11,217	12,174	23,655	11,378	12,278
10 45-64 YEARS.....	39,642	18,965	20,677	40,090	19,242	20,848
11 45-54 YEARS.....	22,304	10,734	11,571	22,344	10,802	11,542
12 55-64 YEARS.....	17,338	8,231	9,107	17,746	8,440	9,306
13 65 YEARS AND OVER.....	18,043	7,824	10,219	19,071	8,159	10,913
14 65-74 YEARS.....	11,429	5,081	6,348	12,082	5,351	6,732
15 75 YEARS AND OVER.....	6,614	2,743	3,871	6,989	2,808	4,181

1/ THIS CATEGORY INCLUDES SAMPLED DISCHARGES FOR WHICH SEX WAS NOT STATED.

2/ THE CATEGORY "ALL AGES" INCLUDES SAMPLED DISCHARGES FOR WHICH AGE WAS NOT STATED.

NOTE: APPARENT INCONSISTENCY BETWEEN SOME CIVILIAN NONINSTITUTIONALIZED POPULATION AND CIVILIAN RESIDENT POPULATION VALUES RESULTS FROM USING UNADJUSTED CIVILIAN NONINSTITUTIONALIZED POPULATION ESTIMATES BUT ADJUSTED CIVILIAN RESIDENT POPULATION ESTIMATES. THIS IS DISCUSSED IN DETAIL IN THE TEXT SECTION "CHANGES IN RATES."

TABLE 3. ESTIMATED NUMBER OF PERSONS IN THE CIVILIAN NONINSTITUTIONALIZED AND CIVILIAN RESIDENT POPULATIONS AS OF JULY 1, 1967, RATIO OF THE CIVILIAN NONINSTITUTIONALIZED TO THE CIVILIAN RESIDENT POPULATION, AND DISCHARGE RATES FROM SHORT-STAY HOSPITALS FOR EACH POPULATION GROUP, BY SEX AND AGE: UNITED STATES, 1967--CON.

BOTH SEXES			BOTH SEXES /1			BOTH SEXES /1			
MALE	FEMALE		MALE	FEMALE		MALE	FEMALE		
RATIO OF CIVILIAN NONINSTITUTIONALIZED POPULATION TO CIVILIAN RESIDENT POPULATION			RATE OF DISCHARGES PER 1,000 CIVILIAN NONINSTITUTIONALIZED POPULATION /2			RATE OF DISCHARGES PER 1,000 CIVILIAN RESIDENT POPULATION /2			
0.991	0.991	0.991	144.5	117.5	169.0	143.2	116.4	167.5	01
1.012	1.012	1.013	67.3	74.0	59.8	68.1	74.9	60.5	02
1.024	1.026	1.022	159.0	180.5	135.3	162.8	185.2	138.3	03
1.034	1.036	1.031	75.9	84.0	66.9	78.4	87.0	69.0	04
1.004	1.002	1.005	56.0	60.9	50.5	56.2	61.0	50.8	05
0.986	0.983	0.990	161.6	92.2	223.6	159.4	90.6	221.4	06
0.984	0.979	0.989	158.9	81.1	227.0	156.4	79.4	224.5	07
0.987	0.984	0.990	181.3	90.2	263.8	179.0	88.8	261.2	08
0.989	0.986	0.992	146.3	108.2	180.9	144.7	106.6	179.3	09
0.989	0.986	0.992	161.1	158.1	163.0	159.3	155.8	161.6	10
0.998	0.994	1.003	149.2	135.3	161.5	148.9	134.4	161.9	11
0.977	0.975	0.979	176.3	187.8	164.8	172.3	183.2	161.3	12
0.946	0.959	0.936	289.1	300.7	278.5	273.5	288.3	260.8	13
0.946	0.950	0.943	246.6	262.1	232.9	233.3	248.9	219.6	14
0.946	0.977	0.926	362.4	372.0	353.4	343.0	363.4	327.2	15

TABLE 4. ESTIMATED NUMBER OF PERSONS IN THE CIVILIAN NONINSTITUTIONALIZED AND CIVILIAN RESIDENT POPULATIONS AS OF JULY 1, 1968, RATIO OF THE CIVILIAN NONINSTITUTIONALIZED TO THE CIVILIAN RESIDENT POPULATION, AND DISCHARGE RATES FROM SHORT-STAY HOSPITALS FOR EACH POPULATION GROUP, BY SEX AND AGE: UNITED STATES, 1968

AGE	BOTH SEXES			BOTH SEXES		
	MALE	FEMALE		MALE	FEMALE	
	CIVILIAN NONINSTITUTIONALIZED POPULATION IN THOUSANDS			CIVILIAN RESIDENT POPULATION IN THOUSANDS		
01 ALL AGES.....	195,324	93,999	101,325	197,113	94,872	102,241
02 UNDER 15 YEARS.....	59,473	30,270	29,204	58,684	29,882	28,802
03 UNDER 1 YEAR.....	3,432	1,752	1,680	3,366	1,718	1,648
04 1-4 YEARS.....	15,061	7,686	7,374	14,547	7,406	7,141
05 5-14 YEARS.....	40,981	20,831	20,149	40,771	20,757	20,014
06 15-44 YEARS.....	77,261	36,622	40,639	78,322	37,258	41,064
07 15-24 YEARS.....	31,291	14,646	16,645	31,799	14,963	16,836
08 25-34 YEARS.....	22,928	10,935	11,993	23,201	11,094	12,108
09 35-44 YEARS.....	23,042	11,040	12,002	23,321	11,201	12,120
10 45-64 YEARS.....	40,237	19,201	21,036	40,741	19,510	21,232
11 45-54 YEARS.....	22,584	10,844	11,740	22,658	10,926	11,732
12 55-64 YEARS.....	17,652	8,357	9,295	18,083	8,584	9,500
13 65 YEARS AND OVER.....	18,353	7,907	10,446	19,365	8,223	11,142
14 65-74 YEARS.....	11,550	5,117	6,433	12,179	5,366	6,812
15 75 YEARS AND OVER.....	6,803	2,790	4,013	7,186	2,856	4,330

1/ THIS CATEGORY INCLUDES SAMPLED DISCHARGES FOR WHICH SEX WAS NOT STATED.

2/ THE CATEGORY "ALL AGES" INCLUDES SAMPLED DISCHARGES FOR WHICH AGE WAS NOT STATED.

NOTE: APPARENT INCONSISTENCY BETWEEN SOME CIVILIAN NONINSTITUTIONALIZED POPULATION AND CIVILIAN RESIDENT POPULATION VALUES RESULTS FROM USING UNADJUSTED CIVILIAN NONINSTITUTIONALIZED POPULATION ESTIMATES BUT ADJUSTED CIVILIAN RESIDENT POPULATION ESTIMATES. THIS IS DISCUSSED IN DETAIL IN THE TEXT SECTION "CHANGES IN RATES."

TABLE 4. ESTIMATED NUMBER OF PERSONS IN THE CIVILIAN NONINSTITUTIONALIZED AND CIVILIAN RESIDENT POPULATIONS AS OF JULY 1, 1968, RATIO OF THE CIVILIAN NONINSTITUTIONALIZED TO THE CIVILIAN RESIDENT POPULATION, AND DISCHARGE RATES FROM SHORT-STAY HOSPITALS FOR EACH POPULATION GROUP, BY SEX AND AGE: UNITED STATES, 1968--CON.

BOTH SEXES	MALE	FEMALE	BOTH SEXES /1	MALE	FEMALE	BOTH SEXES /1	MALE	FEMALE	
RATIO OF CIVILIAN NONINSTITUTIONALIZED POPULATION TO CIVILIAN RESIDENT POPULATION			RATE OF DISCHARGES PER 1,000 CIVILIAN NONINSTITUTIONALIZED POPULATION /2			RATE OF DISCHARGES PER 1,000 CIVILIAN RESIDENT POPULATION /2			
0.991	0.991	0.991	143.7	119.2	165.8	142.4	118.1	164.3	01
1.013	1.013	1.014	67.1	74.0	59.6	68.0	74.9	60.4	02
1.020	1.020	1.019	166.8	191.4	140.5	170.1	195.2	143.2	03
1.035	1.038	1.033	79.2	89.6	68.1	82.0	92.9	70.3	04
1.005	1.004	1.007	54.3	58.3	49.7	54.5	58.5	50.0	05
0.986	0.983	0.990	155.8	91.9	213.0	153.7	90.3	210.7	06
0.984	0.979	0.989	153.7	81.2	217.1	151.2	79.5	214.6	07
0.988	0.986	0.991	173.4	90.5	248.4	171.3	89.2	246.0	08
0.988	0.986	0.990	141.2	107.4	171.8	139.5	105.8	170.1	09
0.988	0.984	0.991	162.0	162.0	161.1	160.0	159.5	159.6	10
0.997	0.992	1.001	148.7	137.7	158.2	148.2	136.7	158.3	11
0.976	0.974	0.978	179.0	193.5	164.9	174.7	188.4	161.3	12
0.948	0.962	0.938	300.8	314.4	288.7	285.0	302.3	270.6	13
0.948	0.954	0.944	255.9	271.9	241.6	242.7	259.3	228.2	14
0.947	0.977	0.927	376.9	392.4	364.1	356.8	383.4	337.5	15

TABLE 5. ESTIMATED NUMBER OF PERSONS IN THE CIVILIAN NONINSTITUTIONALIZED AND CIVILIAN RESIDENT POPULATIONS AS OF JULY 1, 1969, RATIO OF THE CIVILIAN NONINSTITUTIONALIZED TO THE CIVILIAN RESIDENT POPULATION, AND DISCHARGE RATES FROM SHORT-STAY HOSPITALS FOR EACH POPULATION GROUP, BY SEX AND AGE: UNITED STATES, 1969

AGE	CIVILIAN NONINSTITUTIONALIZED POPULATION IN THOUSANDS			CIVILIAN RESIDENT POPULATION IN THOUSANDS		
	BOTH SEXES	MALE	FEMALE	BOTH SEXES	MALE	FEMALE
01 ALL AGES.....	197,416	94,977	102,439	199,145	95,795	103,351
02 UNDER 15 YEARS.....	59,128	30,104	29,024	58,260	29,677	28,582
03 UNDER 1 YEAR.....	3,493	1,784	1,709	3,413	1,742	1,670
04 1-4 YEARS.....	14,453	7,373	7,080	13,964	7,112	6,852
05 5-14 YEARS.....	41,182	20,947	20,235	40,884	20,823	20,060
06 15-44 YEARS.....	78,813	37,442	41,371	79,852	38,051	41,801
07 15-24 YEARS.....	32,451	15,247	17,204	32,922	15,524	17,398
08 25-34 YEARS.....	23,663	11,309	12,354	23,932	11,474	12,458
09 35-44 YEARS.....	22,699	10,886	11,814	22,998	11,053	11,945
10 45-64 YEARS.....	40,805	19,435	21,369	41,353	19,771	21,581
11 45-54 YEARS.....	22,845	10,955	11,890	22,966	11,062	11,904
12 55-64 YEARS.....	17,960	8,481	9,479	18,387	8,709	9,677
13 65 YEARS AND OVER.....	18,671	7,997	10,674	19,680	8,295	11,385
14 65-74 YEARS.....	11,693	5,166	6,527	12,301	5,396	6,905
15 75 YEARS AND OVER.....	6,978	2,830	4,147	7,379	2,899	4,479

1/ THIS CATEGORY INCLUDES SAMPLED DISCHARGES FOR WHICH SEX WAS NOT STATED.

2/ THE CATEGORY "ALL AGES" INCLUDES SAMPLED DISCHARGES FOR WHICH AGE WAS NOT STATED.

NOTE: APPARENT INCONSISTENCY BETWEEN SOME CIVILIAN NONINSTITUTIONALIZED POPULATION AND CIVILIAN RESIDENT POPULATION VALUES RESULTS FROM USING UNADJUSTED CIVILIAN NONINSTITUTIONALIZED POPULATION ESTIMATES BUT ADJUSTED CIVILIAN RESIDENT POPULATION ESTIMATES. THIS IS DISCUSSED IN DETAIL IN THE TEXT SECTION "CHANGES IN RATES."

TABLE 5. ESTIMATED NUMBER OF PERSONS IN THE CIVILIAN NONINSTITUTIONALIZED AND CIVILIAN RESIDENT POPULATIONS AS OF JULY 1, 1969, RATIO OF THE CIVILIAN NONINSTITUTIONALIZED TO THE CIVILIAN RESIDENT POPULATION, AND DISCHARGE RATES FROM SHORT-STAY HOSPITALS FOR EACH POPULATION GROUP, BY SEX AND AGE: UNITED STATES, 1969--CON.

BOTH SEXES	MALE	FEMALE	BOTH SEXES /1	MALE	FEMALE	BOTH SEXES /1	MALE	FEMALE	
RATIO OF CIVILIAN NONINSTITUTIONALIZED POPULATION TO CIVILIAN RESIDENT POPULATION			RATE OF DISCHARGES PER 1,000 CIVILIAN NONINSTITUTIONALIZED POPULATION /2			RATE OF DISCHARGES PER 1,000 CIVILIAN RESIDENT POPULATION /2			
0.991	0.991	0.991	144.5	120.0	166.8	143.3	119.0	165.4	01
1.015	1.014	1.015	67.4	73.8	60.5	68.4	74.8	61.4	02
1.023	1.024	1.023	162.1	185.3	137.2	165.9	189.8	140.4	03
1.035	1.037	1.033	79.8	86.7	72.6	82.6	89.8	75.0	04
1.007	1.006	1.009	54.8	59.5	49.6	55.2	59.9	50.0	05
0.987	0.984	0.990	155.1	92.1	211.6	153.0	90.7	209.4	06
0.986	0.982	0.989	153.0	81.6	216.0	150.8	80.2	213.6	07
0.989	0.986	0.992	171.8	88.9	246.9	169.9	87.6	244.8	08
0.987	0.985	0.989	140.6	110.2	168.4	138.8	108.5	166.5	09
0.987	0.983	0.990	162.7	161.4	163.5	160.5	158.7	161.9	10
0.995	0.990	0.999	152.3	139.6	163.5	151.5	138.3	163.3	11
0.977	0.974	0.980	175.9	189.6	163.4	171.8	184.6	160.0	12
0.949	0.964	0.938	304.9	324.4	289.3	289.3	312.7	271.2	13
0.951	0.957	0.945	263.4	287.6	243.0	250.4	275.3	229.7	14
0.946	0.976	0.926	374.5	391.6	362.0	354.2	382.3	335.2	15

TABLE 6. ESTIMATED NUMBER OF PERSONS IN THE CIVILIAN NONINSTITUTIONALIZED AND CIVILIAN RESIDENT POPULATIONS AS OF JULY 1, 1970, RATIO OF THE CIVILIAN NONINSTITUTIONALIZED TO THE CIVILIAN RESIDENT POPULATION, AND DISCHARGE RATES FROM SHORT-STAY HOSPITALS FOR EACH POPULATION GROUP, BY SEX AND AGE: UNITED STATES, 1970

AGE	CIVILIAN NONINSTITUTIONALIZED POPULATION IN THOUSANDS			CIVILIAN RESIDENT POPULATION IN THOUSANDS		
	BOTH SEXES	MALE	FEMALE	BOTH SEXES	MALE	FEMALE
01 ALL AGES.....	199,574	95,978	103,596	201,895	97,238	104,657
02 UNDER 15 YEARS.....	57,705	29,391	28,314	57,938	29,525	28,413
03 UNDER 1 YEAR.....	3,431	1,751	1,680	3,508	1,791	1,718
04 1-4 YEARS.....	13,726	6,995	6,731	13,658	6,961	6,697
05 5-14 YEARS.....	40,548	20,645	19,903	40,772	20,774	19,998
06 15-44 YEARS.....	81,174	38,750	42,423	81,925	39,286	42,640
07 15-24 YEARS.....	34,164	16,223	17,942	34,492	16,457	18,036
08 25-34 YEARS.....	24,394	11,691	12,703	24,653	11,873	12,780
09 35-44 YEARS.....	22,615	10,837	11,779	22,780	10,956	11,824
10 45-64 YEARS.....	41,478	19,746	21,732	41,925	20,014	21,910
11 45-54 YEARS.....	23,026	11,047	11,979	23,247	11,185	12,061
12 55-64 YEARS.....	18,451	8,699	9,752	18,678	8,829	9,849
13 65 YEARS AND OVER.....	19,218	8,091	11,127	20,106	8,413	11,693
14 65-74 YEARS.....	12,169	5,306	6,862	12,493	5,461	7,032
15 75 YEARS AND OVER.....	7,049	2,785	4,264	7,613	2,952	4,661

1/ THIS CATEGORY INCLUDES SAMPLED DISCHARGES FOR WHICH SEX WAS NOT STATED.

NOTE: APPARENT INCONSISTENCY BETWEEN SOME CIVILIAN NONINSTITUTIONALIZED POPULATION AND CIVILIAN RESIDENT POPULATION VALUES RESULTS FROM USING UNADJUSTED CIVILIAN NONINSTITUTIONALIZED POPULATION ESTIMATES BUT ADJUSTED CIVILIAN RESIDENT POPULATION ESTIMATES. THIS IS DISCUSSED IN DETAIL IN THE TEXT SECTION "CHANGES IN RATES."

TABLE 6. ESTIMATED NUMBER OF PERSONS IN THE CIVILIAN NONINSTITUTIONALIZED AND CIVILIAN RESIDENT POPULATIONS AS OF JULY 1, 1970, RATIO OF THE CIVILIAN NONINSTITUTIONALIZED TO THE CIVILIAN RESIDENT POPULATION, AND DISCHARGE RATES FROM SHORT-STAY HOSPITALS FOR EACH POPULATION GROUP, BY SEX AND AGE: UNITED STATES, 1970--CON.

BOTH SEXES	MALE	FEMALE	BOTH SEXES /1	MALE	FEMALE	BOTH SEXES /1	MALE	FEMALE	
RATIO OF CIVILIAN NONINSTITUTIONALIZED POPULATION TO CIVILIAN RESIDENT POPULATION			RATE OF DISCHARGES PER 1,000 CIVILIAN NONINSTITUTIONALIZED POPULATION			RATE OF DISCHARGES PER 1,000 CIVILIAN RESIDENT POPULATION			
0.989	0.987	0.990	145.9	119.1	170.8	144.3	117.6	169.1	01
0.996	0.995	0.997	67.1	73.9	60.0	66.8	73.6	59.8	02
0.978	0.978	0.978	165.0	189.2	139.7	161.4	184.9	136.7	03
1.005	1.005	1.005	80.6	93.0	67.7	81.0	93.4	68.0	04
0.995	0.994	0.995	54.3	57.7	50.7	54.0	57.4	50.5	05
0.991	0.986	0.995	156.0	90.0	216.3	154.6	88.7	215.2	06
0.990	0.986	0.995	151.3	78.0	217.5	149.9	76.9	216.4	07
0.989	0.985	0.994	174.5	87.6	254.6	172.7	86.2	253.0	08
0.993	0.989	0.996	143.2	110.4	173.3	142.1	109.2	172.6	09
0.989	0.987	0.992	161.4	157.2	165.1	159.6	155.1	163.8	10
0.990	0.988	0.993	148.5	132.2	163.5	147.0	130.6	162.4	11
0.988	0.985	0.990	177.5	189.0	167.2	175.3	186.2	165.5	12
0.956	0.962	0.952	306.8	329.6	290.3	293.3	317.0	276.2	13
0.974	0.972	0.976	259.9	284.9	240.6	253.2	276.8	234.8	14
0.926	0.943	0.915	387.8	414.7	370.3	359.1	391.3	338.7	15

TABLE 7. ESTIMATED NUMBER OF PERSONS IN THE CIVILIAN NONINSTITUTIONALIZED AND CIVILIAN RESIDENT POPULATIONS AS OF JULY 1, 1971, RATIO OF THE CIVILIAN NONINSTITUTIONALIZED TO THE CIVILIAN RESIDENT POPULATION, AND DISCHARGE RATES FROM SHORT-STAY HOSPITALS FOR EACH POPULATION GROUP, BY SEX AND AGE: UNITED STATES, 1971

AGE	BOTH SEXES			BOTH SEXES		
	MALE	FEMALE		MALE	FEMALE	
	CIVILIAN NONINSTITUTIONALIZED POPULATION IN THOUSANDS			CIVILIAN RESIDENT POPULATION IN THOUSANDS		
01 ALL AGES.....	202,090	97,330	104,760	204,866	98,816	106,050
02 UNDER 15 YEARS.....	57,368	29,227	28,141	57,734	29,431	28,304
03 UNDER 1 YEAR.....	3,639	1,862	1,777	3,601	1,843	1,758
04 1-4 YEARS.....	13,639	6,953	6,686	13,643	6,954	6,689
05 5-14 YEARS.....	40,089	20,412	19,678	40,490	20,635	19,856
06 15-44 YEARS.....	83,252	39,992	43,259	84,154	40,600	43,554
07 15-24 YEARS.....	35,830	17,229	18,600	36,218	17,480	18,738
08 25-34 YEARS.....	24,992	12,010	12,982	25,322	12,232	13,091
09 35-44 YEARS.....	22,430	10,753	11,677	22,614	10,889	11,725
10 45-64 YEARS.....	41,891	19,912	21,979	42,416	20,226	22,191
11 45-54 YEARS.....	23,208	11,123	12,085	23,457	11,280	12,178
12 55-64 YEARS.....	18,683	8,790	9,894	18,959	8,946	10,013
13 65 YEARS AND OVER.....	19,579	8,199	11,380	20,561	8,559	12,003
14 65-74 YEARS.....	12,339	5,369	6,971	12,684	5,537	7,146
15 75 YEARS AND OVER.....	7,239	2,830	4,409	7,877	3,022	4,856

1/ THIS CATEGORY INCLUDES SAMPLED DISCHARGES FOR WHICH SEX WAS NOT STATED.

NOTE: APPARENT INCONSISTENCY BETWEEN SOME CIVILIAN NONINSTITUTIONALIZED POPULATION AND CIVILIAN RESIDENT POPULATION VALUES RESULTS FROM USING UNADJUSTED CIVILIAN NONINSTITUTIONALIZED POPULATION ESTIMATES BUT ADJUSTED CIVILIAN RESIDENT POPULATION ESTIMATES. THIS IS DISCUSSED IN DETAIL IN THE TEXT SECTION "CHANGES IN RATES."

TABLE 7. ESTIMATED NUMBER OF PERSONS IN THE CIVILIAN NONINSTITUTIONALIZED AND CIVILIAN RESIDENT POPULATIONS AS OF JULY 1, 1971, RATIO OF THE CIVILIAN NONINSTITUTIONALIZED TO THE CIVILIAN RESIDENT POPULATION, AND DISCHARGE RATES FROM SHORT-STAY HOSPITALS FOR EACH POPULATION GROUP, BY SEX AND AGE: UNITED STATES, 1971--CON.

BOTH SEXES	MALE	FEMALE	BOTH SEXES /1	MALE	FEMALE	BOTH SEXES /1	MALE	FEMALE	
RATIO OF CIVILIAN NONINSTITUTIONALIZED POPULATION TO CIVILIAN RESIDENT POPULATION			RATE OF DISCHARGES PER 1,000 CIVILIAN NONINSTITUTIONALIZED POPULATION			RATE OF DISCHARGES PER 1,000 CIVILIAN RESIDENT POPULATION			
0.986	0.985	0.988	145.8	119.6	169.6	143.8	117.8	167.5	01
0.994	0.993	0.994	70.2	76.9	63.0	69.8	76.4	62.6	02
1.011	1.010	1.011	193.6	219.6	165.2	195.7	221.8	167.0	03
1.000	1.000	1.000	83.0	92.6	72.9	83.0	92.6	72.9	04
0.990	0.989	0.991	54.7	58.6	50.4	54.1	57.9	50.0	05
0.989	0.985	0.993	151.4	86.7	210.8	149.8	85.4	209.3	06
0.989	0.986	0.993	145.8	74.0	212.1	144.2	72.9	210.5	07
0.987	0.982	0.992	168.7	84.8	246.1	166.5	83.3	244.0	08
0.992	0.988	0.996	141.1	109.2	169.4	140.0	107.8	168.7	09
0.988	0.984	0.990	163.3	162.3	163.6	161.2	159.8	162.1	10
0.989	0.986	0.992	150.9	139.0	161.4	149.3	137.1	160.1	11
0.985	0.983	0.988	178.6	191.8	166.3	176.0	188.4	164.4	12
0.952	0.958	0.948	305.7	328.9	288.2	291.1	315.0	273.3	13
0.973	0.970	0.976	259.4	283.7	239.9	252.4	275.1	234.0	14
0.919	0.936	0.908	384.7	414.6	364.6	353.6	388.2	331.1	15

TABLE 8. ESTIMATED NUMBER OF PERSONS IN THE CIVILIAN NONINSTITUTIONALIZED AND CIVILIAN RESIDENT POPULATIONS AS OF JULY 1, 1972, RATIO OF THE CIVILIAN NONINSTITUTIONALIZED TO THE CIVILIAN RESIDENT POPULATION, AND DISCHARGE RATES FROM SHORT-STAY HOSPITALS FOR EACH POPULATION GROUP, BY SEX AND AGE: UNITED STATES, 1972

AGE	CIVILIAN NONINSTITUTIONALIZED POPULATION IN THOUSANDS			CIVILIAN RESIDENT POPULATION IN THOUSANDS		
	BOTH SEXES	MALE	FEMALE	BOTH SEXES	MALE	FEMALE
01 ALL AGES.....	204,229	98,511	105,718	207,511	100,252	107,259
02 UNDER 15 YEARS.....	56,609	28,844	27,764	57,047	29,086	27,962
03 UNDER 1 YEAR.....	3,340	1,709	1,632	3,306	1,689	1,617
04 1-4 YEARS.....	13,891	7,089	6,802	13,796	7,039	6,757
05 5-14 YEARS.....	39,377	20,047	19,330	39,946	20,358	19,588
06 15-44 YEARS.....	85,445	41,313	44,133	86,601	42,053	44,548
07 15-24 YEARS.....	36,616	17,803	18,813	37,061	18,082	18,978
08 25-34 YEARS.....	26,540	12,801	13,740	27,006	13,094	13,913
09 35-44 YEARS.....	22,289	10,709	11,580	22,534	10,878	11,657
10 45-64 YEARS.....	42,248	20,054	22,194	42,845	20,415	22,430
11 45-54 YEARS.....	23,348	11,184	12,164	23,637	11,366	12,270
12 55-64 YEARS.....	18,900	8,870	10,030	19,208	9,049	10,160
13 65 YEARS AND OVER.....	19,927	8,300	11,627	21,020	8,699	12,321
14 65-74 YEARS.....	12,523	5,435	7,088	12,922	5,627	7,295
15 75 YEARS AND OVER.....	7,404	2,865	4,539	8,097	3,072	5,026

1/ THIS CATEGORY INCLUDES SAMPLED DISCHARGES FOR WHICH SEX WAS NOT STATED.

NOTE: APPARENT INCONSISTENCY BETWEEN SOME CIVILIAN NONINSTITUTIONALIZED POPULATION AND CIVILIAN RESIDENT POPULATION VALUES RESULTS FROM USING UNADJUSTED CIVILIAN NONINSTITUTIONALIZED POPULATION ESTIMATES BUT ADJUSTED CIVILIAN RESIDENT POPULATION ESTIMATES. THIS IS DISCUSSED IN DETAIL IN THE TEXT SECTION "CHANGES IN RATES."

TABLE 8. ESTIMATED NUMBER OF PERSONS IN THE CIVILIAN NONINSTITUTIONALIZED AND CIVILIAN RESIDENT POPULATIONS AS OF JULY 1, 1972, RATIO OF THE CIVILIAN NONINSTITUTIONALIZED TO THE CIVILIAN RESIDENT POPULATION, AND DISCHARGE RATES FROM SHORT-STAY HOSPITALS FOR EACH POPULATION GROUP, BY SEX AND AGE: UNITED STATES, 1972--CON.

BOTH SEXES	MALE	FEMALE	BOTH SEXES /1	MALE	FEMALE	BOTH SEXES /1	MALE	FEMALE	
RATIO OF CIVILIAN NONINSTITUTIONALIZED POPULATION TO CIVILIAN RESIDENT POPULATION			RATE OF DISCHARGES PER 1,000 CIVILIAN NONINSTITUTIONALIZED POPULATION			RATE OF DISCHARGES PER 1,000 CIVILIAN RESIDENT POPULATION			
0.984	0.983	0.986	154.9	127.8	179.7	152.4	125.6	177.1	01
0.992	0.992	0.993	73.7	81.6	65.3	73.2	80.9	64.9	02
1.010	1.012	1.009	217.0	247.5	184.2	219.2	250.5	185.9	03
1.007	1.007	1.007	89.6	101.2	77.3	90.2	101.9	77.8	04
0.986	0.985	0.987	56.0	60.5	51.1	55.2	59.6	50.4	05
0.987	0.982	0.991	156.0	91.0	216.6	153.9	89.4	214.5	06
0.988	0.985	0.991	147.0	75.9	214.1	145.2	74.7	212.3	07
0.983	0.978	0.988	170.8	88.5	247.2	167.8	86.5	244.1	08
0.989	0.984	0.993	153.3	119.1	184.2	151.6	117.2	183.0	09
0.986	0.982	0.989	177.2	173.8	179.9	174.8	170.7	178.0	10
0.988	0.984	0.991	163.8	146.3	179.5	161.8	144.0	178.0	11
0.984	0.980	0.987	193.8	208.4	180.4	190.7	204.3	178.1	12
0.948	0.954	0.944	332.9	360.8	312.3	315.6	344.3	294.7	13
0.969	0.966	0.972	286.0	318.2	260.8	277.1	307.3	253.4	14
0.914	0.933	0.903	412.4	441.8	392.7	377.1	412.0	354.6	15

TABLE 9. ESTIMATED NUMBER OF PERSONS IN THE CIVILIAN NONINSTITUTIONALIZED AND CIVILIAN RESIDENT POPULATIONS AS OF JULY 1, 1973, RATIO OF THE CIVILIAN NONINSTITUTIONALIZED TO THE CIVILIAN RESIDENT POPULATION, AND DISCHARGE RATES FROM SHORT-STAY HOSPITALS FOR EACH POPULATION GROUP, BY SEX AND AGE: UNITED STATES, 1973

AGE	CIVILIAN NONINSTITUTIONALIZED POPULATION IN THOUSANDS			CIVILIAN RESIDENT POPULATION IN THOUSANDS		
	BOTH SEXES	MALE	FEMALE	BOTH SEXES	MALE	FEMALE
01 ALL AGES.....	205,836	99,307	106,529	209,600	101,254	108,796
02 UNDER 15 YEARS.....	55,559	28,313	27,246	56,160	28,639	27,521
03 UNDER 1 YEAR.....	3,077	1,573	1,504	3,128	1,598	1,530
04 1-4 YEARS.....	13,626	6,952	6,674	13,723	7,003	6,720
05 5-14 YEARS.....	38,856	19,787	19,069	39,309	20,038	19,271
06 15-44 YEARS.....	87,342	42,253	45,088	88,727	43,185	45,541
07 15-24 YEARS.....	37,245	18,117	19,127	37,913	18,560	19,353
08 25-34 YEARS.....	27,770	13,410	14,360	28,318	13,756	14,562
09 35-44 YEARS.....	22,327	10,726	11,601	22,496	10,869	11,627
10 45-64 YEARS.....	42,641	20,310	22,331	43,189	20,568	22,621
11 45-54 YEARS.....	23,577	11,330	12,247	23,763	11,427	12,336
12 55-64 YEARS.....	19,065	8,980	10,085	19,426	9,141	10,285
13 65 YEARS AND OVER.....	20,294	8,431	11,862	21,525	8,861	12,664
14 65-74 YEARS.....	12,888	5,599	7,289	13,247	5,755	7,491
15 75 YEARS AND OVER.....	7,405	2,832	4,573	8,278	3,105	5,172

1/ THIS CATEGORY INCLUDES SAMPLED DISCHARGES FOR WHICH SEX WAS NOT STATED.

TABLE 10. ESTIMATED NUMBER OF PERSONS IN THE CIVILIAN NONINSTITUTIONALIZED AND CIVILIAN RESIDENT POPULATIONS AS OF JULY 1, 1974, RATIO OF THE CIVILIAN NONINSTITUTIONALIZED TO THE CIVILIAN RESIDENT POPULATION, AND DISCHARGE RATES FROM SHORT-STAY HOSPITALS FOR EACH POPULATION GROUP, BY SEX AND AGE: UNITED STATES, 1974

AGE	CIVILIAN NONINSTITUTIONALIZED POPULATION IN THOUSANDS			CIVILIAN RESIDENT POPULATION IN THOUSANDS		
	BOTH SEXES	MALE	FEMALE	BOTH SEXES	MALE	FEMALE
01 ALL AGES.....	207,386	100,067	107,318	211,636	102,247	109,388
02 UNDER 15 YEARS.....	54,479	27,774	26,706	55,203	28,165	27,038
03 UNDER 1 YEAR.....	3,005	1,537	1,467	3,065	1,570	1,496
04 1-4 YEARS.....	13,290	6,786	6,504	13,421	6,852	6,569
05 5-14 YEARS.....	38,185	19,450	18,735	38,716	19,743	18,973
06 15-44 YEARS.....	89,271	43,275	45,996	90,891	44,345	46,546
07 15-24 YEARS.....	37,980	18,538	19,442	38,760	19,045	19,716
08 25-34 YEARS.....	28,938	13,997	14,941	29,608	14,408	15,201
09 35-44 YEARS.....	22,352	10,739	11,613	22,523	10,893	11,630
10 45-64 YEARS.....	42,884	20,431	22,453	43,480	20,698	22,781
11 45-54 YEARS.....	23,585	11,342	12,242	23,769	11,434	12,334
12 55-64 YEARS.....	19,300	9,089	10,211	19,711	9,264	10,447
13 65 YEARS AND OVER.....	20,751	8,587	12,163	22,061	9,040	13,022
14 65-74 YEARS.....	13,200	5,728	7,472	13,574	5,890	7,685
15 75 YEARS AND OVER.....	7,551	2,859	4,692	8,487	3,150	5,337

1/ THIS CATEGORY INCLUDES SAMPLED DISCHARGES FOR WHICH SEX WAS NOT STATED.

TABLE 9. ESTIMATED NUMBER OF PERSONS IN THE CIVILIAN NONINSTITUTIONALIZED AND CIVILIAN RESIDENT POPULATIONS AS OF JULY 1, 1973, RATIO OF THE CIVILIAN NONINSTITUTIONALIZED TO THE CIVILIAN RESIDENT POPULATION, AND DISCHARGE RATES FROM SHORT-STAY HOSPITALS FOR EACH POPULATION GROUP, BY SEX AND AGE: UNITED STATES, 1973--CON.

BOTH SEXES	MALE	FEMALE	BOTH SEXES /1	MALE	FEMALE	BOTH SEXES /1	MALE	FEMALE	
RATIO OF CIVILIAN NONINSTITUTIONALIZED POPULATION TO CIVILIAN RESIDENT POPULATION			RATE OF DISCHARGES PER 1,000 CIVILIAN NONINSTITUTIONALIZED POPULATION			RATE OF DISCHARGES PER 1,000 CIVILIAN RESIDENT POPULATION			
0.982	0.981	0.979	156.1	129.2	180.9	153.3	126.8	177.1	01
0.989	0.989	0.990	70.8	78.8	62.4	70.0	77.9	61.8	02
0.984	0.984	0.983	188.6	214.4	161.3	185.6	211.0	158.5	03
0.993	0.993	0.993	89.1	101.1	76.4	88.4	100.3	75.9	04
0.988	0.987	0.990	55.1	60.2	49.7	54.4	59.4	49.2	05
0.984	0.978	0.990	154.4	91.7	212.9	152.0	89.7	210.7	06
0.982	0.976	0.988	142.9	77.5	204.7	140.4	75.6	202.4	07
0.981	0.975	0.986	170.1	90.6	244.2	166.8	88.3	240.8	08
0.992	0.987	0.998	153.9	117.0	187.5	152.7	115.4	187.0	09
0.987	0.987	0.987	182.3	179.1	185.0	180.0	176.8	182.6	10
0.992	0.992	0.993	167.8	151.6	182.5	166.5	150.4	181.2	11
0.981	0.982	0.981	200.2	213.7	188.0	196.5	209.9	184.3	12
0.943	0.951	0.937	341.8	367.0	323.5	322.3	349.2	303.0	13
0.973	0.973	0.973	289.3	320.6	264.9	281.4	311.9	257.7	14
0.895	0.912	0.884	433.3	458.8	417.0	387.6	418.5	368.7	15

TABLE 10. ESTIMATED NUMBER OF PERSONS IN THE CIVILIAN NONINSTITUTIONALIZED AND CIVILIAN RESIDENT POPULATIONS AS OF JULY 1, 1974, RATIO OF THE CIVILIAN NONINSTITUTIONALIZED TO THE CIVILIAN RESIDENT POPULATION, AND DISCHARGE RATES FROM SHORT-STAY HOSPITALS FOR EACH POPULATION GROUP, BY SEX AND AGE: UNITED STATES, 1974--CON.

BOTH SEXES	MALE	FEMALE	BOTH SEXES /1	MALE	FEMALE	BOTH SEXES /1	MALE	FEMALE	
RATIO OF CIVILIAN NONINSTITUTIONALIZED POPULATION TO CIVILIAN RESIDENT POPULATION			RATE OF DISCHARGES PER 1,000 CIVILIAN NONINSTITUTIONALIZED POPULATION			RATE OF DISCHARGES PER 1,000 CIVILIAN RESIDENT POPULATION			
0.980	0.979	0.981	159.2	131.1	185.2	156.0	128.3	181.7	01
0.987	0.986	0.988	71.8	78.8	64.4	70.9	77.7	63.6	02
0.980	0.979	0.981	192.3	215.6	167.4	188.5	211.1	164.2	03
0.990	0.990	0.990	88.5	99.4	77.1	87.7	98.5	76.3	04
0.986	0.985	0.987	56.5	60.8	51.9	55.7	59.9	51.3	05
0.982	0.976	0.988	155.2	92.8	213.7	152.4	90.5	211.2	06
0.980	0.973	0.986	143.6	78.7	205.3	140.7	76.6	202.5	07
0.977	0.971	0.983	170.2	91.4	244.0	166.4	88.8	239.8	08
0.992	0.986	0.999	155.5	118.8	188.9	154.3	117.1	188.6	09
0.986	0.987	0.986	188.1	182.4	193.0	185.5	180.1	190.3	10
0.992	0.992	0.993	171.8	152.3	189.6	170.5	151.1	188.2	11
0.979	0.981	0.977	208.0	219.9	197.1	203.6	215.8	192.7	12
0.941	0.950	0.934	346.2	371.5	328.1	325.7	352.8	306.4	13
0.972	0.972	0.972	291.0	320.2	268.1	283.0	311.4	260.7	14
0.890	0.908	0.879	442.8	474.1	423.5	394.0	430.3	372.3	15

TABLE 11. ESTIMATED NUMBER OF PERSONS IN THE CIVILIAN NONINSTITUTIONALIZED AND CIVILIAN RESIDENT POPULATIONS AS OF JULY 1, 1975, RATIO OF THE CIVILIAN NONINSTITUTIONALIZED TO THE CIVILIAN RESIDENT POPULATION, AND DISCHARGE RATES FROM SHORT-STAY HOSPITALS FOR EACH POPULATION GROUP, BY SEX AND AGE: UNITED STATES, 1975

AGE	CIVILIAN NONINSTITUTIONALIZED POPULATION IN THOUSANDS			CIVILIAN RESIDENT POPULATION IN THOUSANDS		
	BOTH SEXES	MALE	FEMALE	BOTH SEXES	MALE	FEMALE
01 ALL AGES.....	209,093	100,881	108,212	213,788	103,279	110,509
02 UNDER 15 YEARS.....	53,514	27,283	26,231	54,361	27,746	26,616
03 UNDER 1 YEAR.....	3,080	1,574	1,505	3,152	1,613	1,539
04 1-4 YEARS.....	12,806	6,539	6,267	12,969	6,627	6,342
05 5-14 YEARS.....	37,628	19,169	18,458	38,240	19,506	18,735
06 15-44 YEARS.....	91,166	44,262	46,904	92,971	45,445	47,527
07 15-24 YEARS.....	38,721	18,950	19,770	39,601	19,519	20,082
08 25-34 YEARS.....	30,081	14,567	15,514	30,845	15,028	15,816
09 35-44 YEARS.....	22,364	10,745	11,619	22,525	10,897	11,629
10 45-64 YEARS.....	43,109	20,553	22,556	43,758	20,823	22,935
11 45-54 YEARS.....	23,538	11,331	12,207	23,715	11,409	12,306
12 55-64 YEARS.....	19,571	9,222	10,349	20,043	9,414	10,629
13 65 YEARS AND OVER.....	21,305	8,784	12,521	22,696	9,265	13,431
14 65-74 YEARS.....	13,529	5,867	7,662	13,917	6,037	7,880
15 75 YEARS AND OVER.....	7,776	2,917	4,859	8,779	3,228	5,551

TABLE 12. ESTIMATED NUMBER OF PERSONS IN THE CIVILIAN NONINSTITUTIONALIZED AND CIVILIAN RESIDENT POPULATIONS AS OF JULY 1, 1976, RATIO OF THE CIVILIAN NONINSTITUTIONALIZED TO THE CIVILIAN RESIDENT POPULATION, AND DISCHARGE RATES FROM SHORT-STAY HOSPITALS FOR EACH POPULATION GROUP, BY SEX AND AGE: UNITED STATES, 1976

AGE	CIVILIAN NONINSTITUTIONALIZED POPULATION IN THOUSANDS			CIVILIAN RESIDENT POPULATION IN THOUSANDS		
	BOTH SEXES	MALE	FEMALE	BOTH SEXES	MALE	FEMALE
01 ALL AGES.....	210,575	101,606	108,969	215,894	104,278	111,616
02 UNDER 15 YEARS.....	52,375	26,713	25,663	53,376	27,249	26,128
03 UNDER 1 YEAR.....	3,024	1,549	1,475	3,115	1,593	1,523
04 1-4 YEARS.....	12,305	6,285	6,021	12,502	6,388	6,114
05 5-14 YEARS.....	37,046	18,879	18,167	37,759	19,268	18,492
06 15-44 YEARS.....	93,132	45,288	47,844	95,272	46,639	48,633
07 15-24 YEARS.....	39,349	19,312	20,037	40,344	19,926	20,418
08 25-34 YEARS.....	31,166	15,112	16,054	32,125	15,671	16,454
09 35-44 YEARS.....	22,616	10,863	11,753	22,803	11,042	11,761
10 45-64 YEARS.....	43,261	20,638	22,623	43,967	20,920	23,047
11 45-54 YEARS.....	23,408	11,276	12,132	23,582	11,348	12,235
12 55-64 YEARS.....	19,853	9,362	10,491	20,385	9,572	10,812
13 65 YEARS AND OVER.....	21,807	8,968	12,839	23,278	9,471	13,807
14 65-74 YEARS.....	13,842	6,004	7,839	14,237	6,175	8,062
15 75 YEARS AND OVER.....	7,965	2,964	5,001	9,041	3,296	5,745

TABLE 11. ESTIMATED NUMBER OF PERSONS IN THE CIVILIAN NONINSTITUTIONALIZED AND CIVILIAN RESIDENT POPULATIONS AS OF JULY 1, 1975, RATIO OF THE CIVILIAN NONINSTITUTIONALIZED TO THE CIVILIAN RESIDENT POPULATION, AND DISCHARGE RATES FROM SHORT-STAY HOSPITALS FOR EACH POPULATION GROUP, BY SEX AND AGE: UNITED STATES, 1975--CON.

RATIO OF CIVILIAN NONINSTITUTIONALIZED POPULATION TO CIVILIAN RESIDENT POPULATION			RATE OF DISCHARGES PER 1,000 CIVILIAN NONINSTITUTIONALIZED POPULATION			RATE OF DISCHARGES PER 1,000 CIVILIAN RESIDENT POPULATION			
BOTH SEXES	MALE	FEMALE	BOTH SEXES	MALE	FEMALE	BOTH SEXES	MALE	FEMALE	
0.978	0.977	0.979	162.8	134.0	189.7	159.2	130.9	185.7	01
0.984	0.983	0.986	71.5	78.6	64.1	70.4	77.3	63.2	02
0.977	0.976	0.978	209.0	239.8	177.0	204.3	234.0	173.0	03
0.987	0.987	0.988	90.1	102.5	77.2	89.0	101.1	76.3	04
0.984	0.983	0.985	53.9	57.2	50.5	53.0	56.2	49.7	05
0.981	0.974	0.987	155.4	92.8	214.6	152.4	90.4	211.8	06
0.978	0.971	0.984	142.4	79.6	202.6	139.2	77.3	195.4	07
0.975	0.969	0.981	172.8	92.1	248.5	168.5	89.3	243.8	08
0.993	0.986	0.999	154.7	117.0	189.7	153.6	115.3	189.5	09
0.985	0.987	0.983	194.7	188.3	200.5	191.8	185.8	197.1	10
0.993	0.993	0.992	177.9	159.2	195.2	176.6	158.1	193.7	11
0.976	0.980	0.974	214.8	224.0	206.6	209.8	219.4	201.2	12
0.939	0.948	0.932	359.3	386.9	339.9	337.3	366.8	316.9	13
0.972	0.972	0.972	299.9	330.6	276.4	291.5	321.3	268.7	14
0.886	0.904	0.875	462.6	500.3	440.0	409.8	452.1	385.2	15

TABLE 12. ESTIMATED NUMBER OF PERSONS IN THE CIVILIAN NONINSTITUTIONALIZED AND CIVILIAN RESIDENT POPULATIONS AS OF JULY 1, 1976, RATIO OF THE CIVILIAN NONINSTITUTIONALIZED TO THE CIVILIAN RESIDENT POPULATION, AND DISCHARGE RATES FROM SHORT-STAY HOSPITALS FOR EACH POPULATION GROUP, BY SEX AND AGE: UNITED STATES, 1976--CON.

RATIO OF CIVILIAN NONINSTITUTIONALIZED POPULATION TO CIVILIAN RESIDENT POPULATION			RATE OF DISCHARGES PER 1,000 CIVILIAN NONINSTITUTIONALIZED POPULATION			RATE OF DISCHARGES PER 1,000 CIVILIAN RESIDENT POPULATION			
BOTH SEXES	MALE	FEMALE	BOTH SEXES	MALE	FEMALE	BOTH SEXES	MALE	FEMALE	
0.975	0.974	0.976	163.2	135.3	189.2	159.2	131.9	184.7	01
0.981	0.980	0.982	71.5	78.7	64.0	70.1	77.2	62.8	02
0.971	0.972	0.968	205.2	232.9	176.1	199.2	226.5	170.6	03
0.984	0.984	0.985	90.4	101.5	78.8	89.0	99.8	77.6	04
0.981	0.980	0.982	54.3	58.5	49.9	53.3	57.3	49.1	05
0.978	0.971	0.984	153.2	93.8	209.5	149.8	91.1	206.1	06
0.975	0.969	0.981	140.8	79.6	199.7	137.3	77.1	196.0	07
0.970	0.964	0.976	169.2	92.0	241.9	164.2	88.7	236.0	08
0.992	0.984	0.999	153.0	121.7	181.9	151.7	119.7	181.8	09
0.984	0.987	0.982	195.2	189.8	200.1	192.1	187.3	196.4	10
0.993	0.994	0.992	176.9	160.8	191.8	175.6	159.8	190.2	11
0.974	0.978	0.970	216.8	224.8	209.6	211.1	219.9	203.4	12
0.937	0.947	0.930	362.8	388.4	345.0	339.9	367.8	320.8	13
0.972	0.972	0.972	299.0	331.6	274.0	290.7	322.4	266.4	14
0.881	0.899	0.870	473.7	503.4	456.1	417.3	452.7	397.0	15

TABLE 13. ESTIMATED NUMBER OF PERSONS IN THE CIVILIAN NONINSTITUTIONALIZED AND CIVILIAN RESIDENT POPULATIONS AS OF JULY 1, 1977, RATIO OF THE CIVILIAN NONINSTITUTIONALIZED TO THE CIVILIAN RESIDENT POPULATION, AND DISCHARGE RATES FROM SHORT-STAY HOSPITALS FOR EACH POPULATION GROUP, BY SEX AND AGE: UNITED STATES, 1977

AGE	CIVILIAN NONINSTITUTIONALIZED POPULATION IN THOUSANDS			CIVILIAN RESIDENT POPULATION IN THOUSANDS		
	BOTH SEXES	MALE	FEMALE	BOTH SEXES	MALE	FEMALE
01 ALL AGES.....	212,182	102,399	109,782	218,106	105,321	112,785
02 UNDER 15 YEARS.....	51,481	26,260	25,220	52,598	26,862	25,736
03 UNDER 1 YEAR.....	3,161	1,619	1,542	3,279	1,680	1,599
04 1-4 YEARS.....	12,067	6,166	5,901	12,285	6,279	6,006
05 5-14 YEARS.....	36,253	18,475	17,778	37,034	18,903	18,131
06 15-44 YEARS.....	95,060	46,231	48,828	97,509	47,788	49,721
07 15-24 YEARS.....	39,720	19,496	20,224	40,885	20,217	20,668
08 25-34 YEARS.....	32,247	15,642	16,604	33,350	16,290	17,060
09 35-44 YEARS.....	23,093	11,092	12,001	23,275	11,282	11,993
10 45-64 YEARS.....	43,357	20,704	22,653	44,108	20,981	23,128
11 45-54 YEARS.....	23,174	11,174	11,999	23,330	11,230	12,100
12 55-64 YEARS.....	20,183	9,529	10,654	20,778	9,751	11,028
13 65 YEARS AND OVER.....	22,284	9,204	13,080	23,892	9,691	14,201
14 65-74 YEARS.....	14,278	6,205	8,072	14,638	6,345	8,293
15 75 YEARS AND OVER.....	8,007	2,999	5,008	9,254	3,346	5,908

NOTE: APPARENT INCONSISTENCY BETWEEN SOME CIVILIAN NONINSTITUTIONALIZED POPULATION AND CIVILIAN RESIDENT POPULATION VALUES RESULTS FROM USING UNADJUSTED CIVILIAN NONINSTITUTIONALIZED POPULATION ESTIMATES BUT ADJUSTED CIVILIAN RESIDENT POPULATION ESTIMATES. THIS IS DISCUSSED IN DETAIL IN THE TEXT SECTION "CHANGES IN RATES."

TABLE 14. ESTIMATED NUMBER OF PERSONS IN THE CIVILIAN NONINSTITUTIONALIZED AND CIVILIAN RESIDENT POPULATIONS AS OF JULY 1, 1978, RATIO OF THE CIVILIAN NONINSTITUTIONALIZED TO THE CIVILIAN RESIDENT POPULATION, AND DISCHARGE RATES FROM SHORT-STAY HOSPITALS FOR EACH POPULATION GROUP, BY SEX AND AGE: UNITED STATES, 1978

AGE	CIVILIAN NONINSTITUTIONALIZED POPULATION IN THOUSANDS			CIVILIAN RESIDENT POPULATION IN THOUSANDS		
	BOTH SEXES	MALE	FEMALE	BOTH SEXES	MALE	FEMALE
01 ALL AGES.....	213,873	103,209	110,665	220,467	106,438	114,030
02 UNDER 15 YEARS.....	50,701	25,867	24,834	51,955	26,541	25,413
03 UNDER 1 YEAR.....	3,196	1,635	1,560	3,326	1,702	1,624
04 1-4 YEARS.....	12,158	6,215	5,943	12,409	6,347	6,062
05 5-14 YEARS.....	35,348	18,016	17,331	36,220	18,492	17,727
06 15-44 YEARS.....	96,943	47,188	49,755	99,766	48,947	50,819
07 15-24 YEARS.....	39,993	19,651	20,342	41,306	20,449	20,857
08 25-34 YEARS.....	33,022	16,035	16,987	34,311	16,776	17,534
09 35-44 YEARS.....	23,928	11,502	12,426	24,149	11,722	12,428
10 45-64 YEARS.....	43,424	20,749	22,675	44,245	21,036	23,209
11 45-54 YEARS.....	22,971	11,089	11,882	23,134	11,140	11,994
12 55-64 YEARS.....	20,453	9,660	10,793	21,111	9,896	11,215
13 65 YEARS AND OVER.....	22,805	9,404	13,400	24,502	9,914	14,588
14 65-74 YEARS.....	14,620	6,354	8,266	14,996	6,496	8,499
15 75 YEARS AND OVER.....	8,184	3,051	5,134	9,507	3,418	6,089

TABLE 13. ESTIMATED NUMBER OF PERSONS IN THE CIVILIAN NONINSTITUTIONALIZED AND CIVILIAN RESIDENT POPULATIONS AS OF JULY 1, 1977, RATIO OF THE CIVILIAN NONINSTITUTIONALIZED TO THE CIVILIAN RESIDENT POPULATION, AND DISCHARGE RATES FROM SHORT-STAY HOSPITALS FOR EACH POPULATION GROUP, BY SEX AND AGE: UNITED STATES, 1977--CON.

BOTH SEXES	MALE	FEMALE	BOTH SEXES	MALE	FEMALE	BOTH SEXES	MALE	FEMALE	
RATIO OF CIVILIAN NONINSTITUTIONALIZED POPULATION TO CIVILIAN RESIDENT POPULATION			RATE OF DISCHARGES PER 1,000 CIVILIAN NONINSTITUTIONALIZED POPULATION			RATE OF DISCHARGES PER 1,000 CIVILIAN RESIDENT POPULATION			
0.973	0.972	0.973	169.2	140.5	196.0	164.6	136.6	190.8	01
0.979	0.978	0.980	73.3	81.4	65.0	71.8	79.6	63.7	02
0.964	0.964	0.964	211.1	236.7	184.1	203.5	228.1	177.6	03
0.982	0.982	0.983	92.5	106.0	78.4	90.9	104.1	77.0	04
0.979	0.977	0.981	54.9	59.5	50.2	53.8	58.2	49.2	05
0.975	0.967	0.982	159.7	98.5	217.6	155.7	95.3	213.7	06
0.972	0.964	0.979	144.5	81.8	204.9	140.4	78.9	200.5	07
0.967	0.960	0.973	178.3	98.8	253.2	172.4	94.8	246.5	08
0.992	0.983	1.001	159.8	127.4	189.8	158.6	125.3	189.9	09
0.983	0.987	0.979	198.4	195.2	201.4	195.1	192.6	197.3	10
0.993	0.995	0.992	179.4	164.5	193.3	178.2	163.7	191.7	11
0.971	0.977	0.966	220.3	231.2	210.5	214.0	226.0	203.4	12
0.933	0.950	0.921	374.4	396.9	358.6	349.2	377.0	330.3	13
0.975	0.978	0.973	304.9	332.9	283.5	297.4	325.5	275.9	14
0.865	0.896	0.848	498.3	529.4	479.7	431.2	474.5	406.6	15

TABLE 14. ESTIMATED NUMBER OF PERSONS IN THE CIVILIAN NONINSTITUTIONALIZED AND CIVILIAN RESIDENT POPULATIONS AS OF JULY 1, 1978, RATIO OF THE CIVILIAN NONINSTITUTIONALIZED TO THE CIVILIAN RESIDENT POPULATION, AND DISCHARGE RATES FROM SHORT-STAY HOSPITALS FOR EACH POPULATION GROUP, BY SEX AND AGE: UNITED STATES, 1978--CON.

BOTH SEXES	MALE	FEMALE	BOTH SEXES	MALE	FEMALE	BOTH SEXES	MALE	FEMALE	
RATIO OF CIVILIAN NONINSTITUTIONALIZED POPULATION TO CIVILIAN RESIDENT POPULATION			RATE OF DISCHARGES PER 1,000 CIVILIAN NONINSTITUTIONALIZED POPULATION			RATE OF DISCHARGES PER 1,000 CIVILIAN RESIDENT POPULATION			
0.970	0.970	0.970	166.5	139.2	192.0	161.5	135.0	186.3	01
0.976	0.975	0.977	68.8	75.2	62.1	67.1	73.3	60.7	02
0.961	0.961	0.961	216.1	241.0	190.1	207.7	231.6	182.6	03
0.980	0.979	0.980	85.9	96.7	74.5	84.2	94.7	73.1	04
0.976	0.974	0.978	49.6	52.8	46.3	48.4	51.4	45.2	05
0.972	0.964	0.979	155.1	96.7	210.5	150.7	93.3	206.1	06
0.968	0.961	0.975	140.2	81.4	197.0	135.8	78.2	192.2	07
0.962	0.956	0.969	174.3	96.6	247.7	167.8	92.4	239.9	08
0.991	0.981	1.000	153.5	123.1	181.6	152.1	120.8	181.6	09
0.981	0.986	0.977	193.1	191.9	194.2	189.5	189.2	189.7	10
0.993	0.995	0.991	174.8	163.4	185.4	173.5	162.7	183.6	11
0.969	0.976	0.962	213.6	224.5	203.8	207.0	219.2	196.2	12
0.931	0.949	0.919	381.9	412.1	360.7	355.4	390.9	331.3	13
0.975	0.978	0.973	305.6	340.3	278.9	297.9	332.8	271.2	14
0.861	0.893	0.843	518.2	561.4	492.4	446.1	501.2	415.1	15

TABLE 15. ESTIMATED NUMBER OF PERSONS IN THE CIVILIAN NONINSTITUTIONALIZED AND CIVILIAN RESIDENT POPULATIONS AS OF JULY 1, 1979, RATIO OF THE CIVILIAN NONINSTITUTIONALIZED TO THE CIVILIAN RESIDENT POPULATION, AND DISCHARGE RATES FROM SHORT-STAY HOSPITALS FOR EACH POPULATION GROUP, BY SEX AND AGE: UNITED STATES, 1979

AGE	BOTH SEXES			BOTH SEXES		
	MALE	FEMALE		MALE	FEMALE	
	CIVILIAN NONINSTITUTIONALIZED POPULATION IN THOUSANDS			CIVILIAN RESIDENT POPULATION IN THOUSANDS		
01 ALL AGES.....	215,884	104,180	111,704	222,969	107,644	115,324
02 UNDER 15 YEARS.....	50,092	25,563	24,530	51,455	26,291	25,164
03 UNDER 1 YEAR.....	3,279	1,679	1,600	3,426	1,753	1,673
04 1-4 YEARS.....	12,362	6,319	6,043	12,637	6,463	6,174
05 5-14 YEARS.....	34,451	17,564	16,887	35,392	18,075	17,317
06 15-44 YEARS.....	98,941	48,197	50,744	102,030	50,125	51,906
07 15-24 YEARS.....	40,168	19,760	20,402	41,590	20,626	20,964
08 25-34 YEARS.....	34,099	16,570	17,528	35,547	17,403	18,144
09 35-44 YEARS.....	24,680	11,866	12,813	24,893	12,095	12,798
10 45-64 YEARS.....	43,481	20,786	22,695	44,351	21,076	23,275
11 45-54 YEARS.....	22,747	10,995	11,752	22,904	11,036	11,868
12 55-64 YEARS.....	20,734	9,792	10,943	21,447	10,040	11,407
13 65 YEARS AND OVER.....	23,369	9,634	13,735	25,134	10,154	14,980
14 65-74 YEARS.....	14,950	6,505	8,445	15,338	6,648	8,690
15 75 YEARS AND OVER.....	8,419	3,129	5,290	9,796	3,505	6,290

NOTE: APPARENT INCONSISTENCY BETWEEN SOME CIVILIAN NONINSTITUTIONALIZED POPULATION AND CIVILIAN RESIDENT POPULATION VALUES RESULTS FROM USING UNADJUSTED CIVILIAN NONINSTITUTIONALIZED POPULATION ESTIMATES BUT ADJUSTED CIVILIAN RESIDENT POPULATION ESTIMATES. THIS IS DISCUSSED IN DETAIL IN THE TEXT SECTION "CHANGES IN RATES."

TABLE 15. ESTIMATED NUMBER OF PERSONS IN THE CIVILIAN NONINSTITUTIONALIZED AND CIVILIAN RESIDENT POPULATIONS AS OF JULY 1, 1979, RATIO OF THE CIVILIAN NONINSTITUTIONALIZED TO THE CIVILIAN RESIDENT POPULATION, AND DISCHARGE RATES FROM SHORT-STAY HOSPITALS FOR EACH POPULATION GROUP, BY SEX AND AGE: UNITED STATES, 1979--CON.

BOTH SEXES			BOTH SEXES			BOTH SEXES			
MALE	FEMALE		MALE	FEMALE		MALE	FEMALE		
RATIO OF CIVILIAN NONINSTITUTIONALIZED POPULATION TO CIVILIAN RESIDENT POPULATION			RATE OF DISCHARGES PER 1,000 CIVILIAN NONINSTITUTIONALIZED POPULATION			RATE OF DISCHARGES PER 1,000 CIVILIAN RESIDENT POPULATION			
0.968	0.968	0.969	170.2	141.1	197.3	164.8	136.6	191.1	01
0.974	0.972	0.975	72.7	80.3	64.7	70.8	78.1	63.1	02
0.957	0.958	0.956	229.9	254.2	204.3	220.0	243.5	195.4	03
0.978	0.978	0.979	88.5	101.2	75.2	86.6	99.0	73.6	04
0.973	0.972	0.975	52.1	56.2	47.8	50.7	54.6	46.6	05
0.970	0.962	0.978	156.5	97.1	213.0	151.8	93.4	208.2	06
0.966	0.958	0.973	145.9	82.1	207.8	140.9	78.6	202.2	07
0.959	0.952	0.966	176.1	98.3	249.7	168.9	93.6	241.2	08
0.991	0.981	1.001	146.7	120.5	171.1	145.5	118.2	171.3	09
0.980	0.986	0.975	196.2	193.2	199.0	192.4	190.6	194.0	10
0.993	0.996	0.990	178.7	163.6	192.7	177.4	163.0	190.9	11
0.967	0.975	0.959	215.5	226.5	205.6	208.3	220.9	197.3	12
0.930	0.949	0.917	388.8	410.5	373.6	361.5	389.5	342.5	13
0.975	0.978	0.972	308.6	338.2	285.7	300.8	331.0	277.6	14
0.859	0.893	0.841	531.3	560.8	513.8	456.6	500.6	432.1	15

TABLE 16. ESTIMATED NUMBER OF PERSONS IN THE CIVILIAN NONINSTITUTIONALIZED AND CIVILIAN RESIDENT POPULATIONS AS OF JULY 1, 1980, RATIO OF THE CIVILIAN NONINSTITUTIONALIZED TO THE CIVILIAN RESIDENT POPULATION, AND DISCHARGE RATES FROM SHORT-STAY HOSPITALS FOR EACH POPULATION GROUP, BY SEX AND AGE: UNITED STATES, 1980

AGE	BOTH SEXES			BOTH SEXES		
	MALE	FEMALE		MALE	FEMALE	
	CIVILIAN NONINSTITUTIONALIZED POPULATION IN THOUSANDS			CIVILIAN RESIDENT POPULATION IN THOUSANDS		
01 ALL AGES.....	223,035	107,624	115,411	225,552	108,895	116,657
02 UNDER 15 YEARS.....	51,169	26,146	25,023	51,270	26,208	25,063
03 UNDER 1 YEAR.....	3,509	1,796	1,713	3,548	1,815	1,733
04 1-4 YEARS.....	12,916	6,605	6,311	12,900	6,597	6,303
05 5-14 YEARS.....	34,744	17,745	17,000	34,822	17,795	17,027
06 15-44 YEARS.....	103,332	50,534	52,798	104,126	51,203	52,923
07 15-24 YEARS.....	41,203	20,316	20,886	41,605	20,645	20,960
08 25-34 YEARS.....	36,686	17,883	18,803	36,920	18,105	18,815
09 35-44 YEARS.....	25,442	12,333	13,109	25,601	12,453	13,148
10 45-64 YEARS.....	44,188	20,960	23,228	44,448	21,121	23,328
11 45-54 YEARS.....	22,602	10,879	11,723	22,696	10,948	11,749
12 55-64 YEARS.....	21,586	10,081	11,505	21,752	10,173	11,579
13 65 YEARS AND OVER.....	24,346	9,985	14,361	25,708	10,363	15,345
14 65-74 YEARS.....	15,365	6,667	8,699	15,648	6,787	8,861
15 75 YEARS AND OVER.....	8,981	3,318	5,662	10,061	3,577	6,484

NOTE: APPARENT INCONSISTENCY BETWEEN SOME CIVILIAN NONINSTITUTIONALIZED POPULATION AND CIVILIAN RESIDENT POPULATION VALUES RESULTS FROM USING UNADJUSTED CIVILIAN NONINSTITUTIONALIZED POPULATION ESTIMATES BUT ADJUSTED CIVILIAN RESIDENT POPULATION ESTIMATES. THIS IS DISCUSSED IN DETAIL IN THE TEXT SECTION "CHANGES IN RATES."

TABLE 16. ESTIMATED NUMBER OF PERSONS IN THE CIVILIAN NONINSTITUTIONALIZED AND CIVILIAN RESIDENT POPULATIONS AS OF JULY 1, 1980, RATIO OF THE CIVILIAN NONINSTITUTIONALIZED TO THE CIVILIAN RESIDENT POPULATION, AND DISCHARGE RATES FROM SHORT-STAY HOSPITALS FOR EACH POPULATION GROUP, BY SEX AND AGE: UNITED STATES, 1980--CON.

BOTH SEXES			BOTH SEXES			BOTH SEXES			
MALE	FEMALE		MALE	FEMALE		MALE	FEMALE		
RATIO OF CIVILIAN NONINSTITUTIONALIZED POPULATION TO CIVILIAN RESIDENT POPULATION			RATE OF DISCHARGES PER 1,000 CIVILIAN NONINSTITUTIONALIZED POPULATION			RATE OF DISCHARGES PER 1,000 CIVILIAN RESIDENT POPULATION			
0.989	0.588	0.989	169.6	140.7	196.6	167.7	139.1	194.5	01
0.998	0.998	0.998	71.8	78.9	64.3	71.6	78.7	64.2	02
0.989	0.990	0.988	235.1	260.0	209.0	232.5	257.3	206.6	03
1.001	1.001	1.001	86.3	99.4	72.6	86.4	99.5	72.7	04
0.998	0.997	0.998	49.9	53.0	46.7	49.8	52.8	46.6	05
0.992	0.587	0.998	151.3	92.7	207.4	150.2	91.5	206.9	06
0.990	0.984	0.996	139.3	78.1	198.8	137.9	76.8	198.1	07
0.994	0.988	0.999	169.4	91.9	243.1	168.4	90.8	243.0	08
0.994	0.990	0.997	144.7	118.1	169.7	143.8	116.9	169.2	09
0.994	0.992	0.996	196.0	196.9	195.1	194.8	195.4	194.3	10
0.996	0.994	0.998	175.9	165.9	185.1	175.1	164.9	184.7	11
0.992	0.991	0.994	217.0	230.4	205.3	215.4	228.3	204.0	12
0.947	0.964	0.936	405.2	427.4	389.7	383.7	411.8	364.7	13
0.982	0.982	0.982	321.7	353.7	297.2	315.9	347.4	291.7	14
0.893	0.928	0.873	547.9	575.6	531.8	489.1	534.0	464.3	15

Appendixes

Contents

1. Technical notes on methods	37
Statistical design of the National Hospital Discharge Survey	37
Data collection and processing	37
Reliability of estimates	39
Population estimates	39
II. Definitions of terms	40
III. Publications of data from the National Hospital Discharge Survey	41

Appendix figure

1. Medical abstract for the National Hospital Discharge Survey	38
--	----

Appendix table

1. Number of hospitals in the National Hospital Discharge Survey (NHDS) universe, number of hospitals in the NHDS sample, number of hospitals participating in NHDS, and number of abstracts of medical records collected: United States, 1965–82	37
---	----

Appendix I

Technical notes on methods

Statistical design of the National Hospital Discharge Survey

Scope of the survey—The National Hospital Discharge Survey (NHDS) encompasses patients discharged from non-institutional hospitals, exclusive of military and Veterans Administration hospitals, located in the 50 States and the District of Columbia. Only hospitals with six or more beds for patient use and those in which the average length of stay for all patients is less than 30 days are included in the survey. Discharges of patients from Federal hospitals are not included.

Sample size—The Master Facility Inventory of Hospitals and Institutions is the universe from which the NHDS sample is drawn. A detailed description of the development, contents, maintenance plans, and assessment of coverage was published in 1965.⁴

The original universe for the survey was made up of 6,965 hospitals contained in the 1963 Master Facility Inventory of Hospitals and Institutions. As shown in table I, the universe was updated five times from 1965–82 and consisted of 8,080 hospitals in 1982. The sample for the survey, which was composed of 315 hospitals in 1965, has been increased six times

NOTE: A list of references follows the text.

Table I. Number of hospitals in the National Hospital Discharge Survey (NHDS) universe, number of hospitals in the NHDS sample, number of hospitals participating in NHDS, and number of abstracts of medical records collected: United States, 1965–82

Year	Hospitals			Number of abstracts collected
	In universe	In sample	Participating	
1965	6,965	315	296	100,000
1966	6,965	315	300	137,000
1967	6,965	315	289	145,000
1968	6,965	465	413	210,000
1969	6,965	465	402	208,000
1970	6,965	465	395	205,000
1971	6,965	465	379	200,000
1972	7,407	497	424	225,000
1973	7,407	497	424	225,000
1974	7,407	497	426	227,000
1975	7,630	511	432	232,000
1976	7,630	511	419	223,000
1977	7,930	535	423	224,000
1978	7,930	535	413	219,000
1979	8,017	544	416	215,000
1980	8,017	544	420	224,000
1981	8,080	550	428	227,000
1982	8,080	550	426	214,000

and contained 550 hospitals in 1982. Each year some of the sampled hospitals refused to participate in the survey or were found to be out of scope either because they had gone out of business or failed to meet the definition of a short-stay hospital. Thus, the number of hospitals participating in the survey varied from year to year, but grew from 296 in 1965 to 426 in 1982. The number of abstracts of medical records provided by participating hospitals also varied from year to year but increased from approximately 100,000 in 1965 to 214,000 in 1982.

Sample design—A two-stage sampling design is used in the survey. The first stage is the selection of the sample of hospitals. All hospitals with 1,000 or more beds in the universe of short-stay hospitals are included in the survey, while the hospitals with fewer than 1,000 beds are stratified, the primary strata being 24 size-by-region classes. A controlled selection technique is used to allocate hospitals within each primary stratum so that the hospitals in the sample are properly distributed with regard to ownership and geographic division. Sample hospitals are drawn with probabilities ranging from certainty for the largest hospitals to 1 in 40 for the smallest hospitals.

The second stage is selection of a sample of discharges within sampled hospitals. Discharges are selected with an inverse relationship to the probability of hospital selection. In hospitals with 1,000 or more beds, the sampling probability is 1 in 100 while in hospitals with less than 50 beds it is 4 in 10. This sampling is done to compensate for hospitals that were selected with probabilities proportionate to their size class and to insure that the overall probability of selecting a discharge is approximately the same in each size hospital.

In nearly all hospitals, the samples of discharges are selected from the daily listing sheet of discharges. The sample of discharges is selected by a random technique, usually on the basis of the terminal digit(s) of the patient's medical record number, which is assigned when the patient is admitted to the hospital. If the hospital's daily listing does not show the medical record numbers, the sample is selected by starting with a randomly selected discharge and taking every *k*th discharge thereafter.

Data collection and processing

The sample selection and transcription of information from the hospital records to abstract forms are performed by either the medical records department of the hospital or by personnel of the U.S. Bureau of the Census acting for the National Center for Health Statistics, or by both. The abstract form currently used in sample hospitals is shown in figure I. The content of the form has been the same since 1977 when the following items,

CONFIDENTIAL – All information which would permit identification of an individual or of an establishment will be held confidential, will be used only by persons engaged in and for the purposes of the survey, and will not be disclosed or released to other persons or used for any other purpose.

FORM **HDS-1**
(8-5-82)

DEPARTMENT OF HEALTH AND HUMAN SERVICES
U. S. PUBLIC HEALTH SERVICE
NATIONAL CENTER FOR HEALTH STATISTICS

MEDICAL ABSTRACT – NATIONAL HOSPITAL DISCHARGE SURVEY

A. PATIENT IDENTIFICATION	
1. Hospital number	4. Date of admission Month Day Year
2. HDS number	5. Date of discharge
3. Medical record number _____	6. Residence ZIP code _____

B. PATIENT CHARACTERISTICS	
7. Date of birth Month Day Year	8. Age (Complete only if date of birth not given) Units { 1 <input type="checkbox"/> Years 2 <input type="checkbox"/> Months 3 <input type="checkbox"/> Days

9. Sex (Mark (X) one) 1 Male 2 Female 3 Not stated

10. Race

1 <input type="checkbox"/> White	3 <input type="checkbox"/> American Indian/Alaskan Native	5 <input type="checkbox"/> Other (Specify) _____
2 <input type="checkbox"/> Black	4 <input type="checkbox"/> Asian/Pacific Islander	6 <input type="checkbox"/> Not stated

11. Ethnicity (Mark (X) one)

1 <input type="checkbox"/> Hispanic origin	2 <input type="checkbox"/> Non-Hispanic	3 <input type="checkbox"/> Not stated
--	---	---------------------------------------

12. Marital status (Mark (X) one)

1 <input type="checkbox"/> Married	3 <input type="checkbox"/> Widowed	5 <input type="checkbox"/> Separated
2 <input type="checkbox"/> Single	4 <input type="checkbox"/> Divorced	6 <input type="checkbox"/> Not stated

13. Expected source(s) of payment		14. Status/Disposition of patient (Mark (X) appropriate box(es))	
	Principal (Mark one only)	Other additional sources (Mark accordingly)	
Government sources	1. Workmen's Compensation <input type="checkbox"/>	<input type="checkbox"/>	Status Disposition 1 <input type="checkbox"/> Alive a. <input type="checkbox"/> Routine discharge/ discharged home b. <input type="checkbox"/> Left against medical advice c. <input type="checkbox"/> Discharged, transferred to another short-term hospital d. <input type="checkbox"/> Discharged, transferred to long-term care institution e. <input type="checkbox"/> Disposition not stated
	2. Medicare <input type="checkbox"/>	<input type="checkbox"/>	
	3. Medicaid <input type="checkbox"/>	<input type="checkbox"/>	
	4. Title V <input type="checkbox"/>	<input type="checkbox"/>	
	5. Other government payments <input type="checkbox"/>	<input type="checkbox"/>	
Private sources	6. Blue Cross <input type="checkbox"/>	<input type="checkbox"/>	2 <input type="checkbox"/> Died
	7. Other private or commercial insurance <input type="checkbox"/>	<input type="checkbox"/>	
Other sources	8. Self pay <input type="checkbox"/>	<input type="checkbox"/>	
	9. No charge <input type="checkbox"/>	<input type="checkbox"/>	
	10. Other (Specify) _____ <input type="checkbox"/>	<input type="checkbox"/>	
<input type="checkbox"/> No source of payment indicated			

C. FINAL DIAGNOSES

Principal: _____

Other/additional: _____

See reverse side

D. SURGICAL AND DIAGNOSTIC PROCEDURES

Principal: _____

Other/additional: _____

NONE See reverse side

Completed by _____ Date _____

Figure I. Medical abstract for the National Hospital Discharge Survey

which were not on the abstract forms used from 1965–76, were added: residence of patient (zip code), expected source(s) of payment, disposition of patient, and dates of procedures. Completed abstract forms for each sample hospital are shipped, along with sample selection control sheets, to a regional office of the Bureau of the Census. Every shipment is reviewed, and each abstract form is checked for completeness. Abstracts are then sent to the National Center for Health Statistics for processing.

Imputations are made for some missing items. The age and sex of the patient are not stated on the face sheet of the patient's medical record for less than one-fourth of 1 percent of the discharges. If these items are missing, imputations are made by assigning the patient an age or sex consistent with the age or sex of other patients with the same diagnostic code.

Reliability of estimates

Estimation—Statistics produced by NHDS are derived by a complex estimating procedure. The basic unit of estimation is the sample inpatient discharge abstract. The estimating procedure used to produce essentially unbiased national estimates in the NHDS has three principal components: inflation by reciprocals of the probabilities of sample selection, adjustment for nonresponse, and ratio adjustment to fixed totals. These components of estimation are described in appendix I of two earlier publications.^{5,6}

NOTE: A list of references follows the text.

Measurement errors—As in any survey, results are subject to nonsampling or measurement errors, which include errors because of hospital nonresponse, missing abstracts, information incompletely or inaccurately recorded on abstract forms, and processing errors.

Sampling errors—The standard error is primarily a measure of the variability attributed to a value obtained from a sample as an estimate of a population. In NHDS reports it also reflects part of the measurement error. The value that would have been obtained if a complete enumeration of the population had been made will be contained in an interval represented by the sample estimate plus or minus 1 standard error about 68 out of 100 times and plus or minus 2 standard errors about 95 out of 100 times.

While the standard error of one statistic is generally different from that of another, even when the two come from the same survey, approximate relative standard errors have been prepared for NHDS statistics that are applicable to a wide variety of estimates from the survey. These are available in the appendixes of the Series 13 reports listed in appendix III.

Population estimates

The population estimates used in this report are from published and unpublished estimates for the U.S. civilian resident and civilian noninstitutionalized population on July 1 of the data year provided by the U.S. Bureau of the Census. The estimates by age and sex are presented in detailed tables 1–16 and are consistent with population estimates published in *Current Population Reports*, Series P–25.

Appendix II

Definitions of terms

Hospitals—In this report a hospital is a short-stay general or specialty hospital having six or more beds for inpatient use and an average length of stay of less than 30 days. Federal hospitals and hospital units of institutions are not included.

Patient—A person who is formally admitted to the inpatient service of a short-stay hospital for observation, care, diagnosis, or treatment is considered a patient. In this report the number of patients refers to the number of discharges during the year, including any multiple discharges of the same individual from one or more short-stay hospitals. Infants admitted on the day of birth, directly or by transfer from another medical facility, with or without mention of a disease, disorder, or immaturity, are included. All newborn infants, defined as those admitted by birth to the hospital, are excluded from the tables in this report. The terms “patient” and “inpatient” are used synonymously.

Discharge—Discharge is the formal release of a patient by the hospital; that is, the termination of a period of hospitalization by death or by disposition to place of residence, nursing home, or another hospital. The terms “discharges” and “patients discharged” are used synonymously.

Discharge rate—The ratio of the number of hospital discharges during a year to the number of persons in the civilian resident or noninstitutionalized population on July 1 of that year determines the discharge rate.

Population—Civilian resident population is the resident population excluding members of the armed forces. Civilian noninstitutionalized population is the civilian population not residing in institutions.

Age—Patient’s age refers to age at birthday prior to admission to the hospital inpatient service.

Appendix III

Publications of data from the National Hospital Discharge Survey

Year(s) of data	Publication	Year(s) of data	Publication
1965 ¹	National Center for Health Statistics, M. G. Sirken: Utilization of short-stay hospitals, summary of non-medical statistics, United States, 1965. <i>Vital and Health Statistics</i> . Series 13, No. 2. PHS Pub. No. 1000. Public Health Service. Washington. U.S. Government Printing Office, Aug. 1967.	1966	National Center for Health Statistics, A. L. Ranofsky and M. J. Witkin: Utilization of short-stay hospitals, summary of nonmedical statistics, United States, 1966. <i>Vital and Health Statistics</i> . Series 13, No. 8. DHEW Pub. No. (HSM) 72-1006. Health Services and Mental Health Administration. Washington. U.S. Government Printing Office, Sept. 1971.
	National Center for Health Statistics, M. J. Witkin: Utilization of short-stay hospitals by characteristics of discharged patients, United States, 1965. <i>Vital and Health Statistics</i> . Series 13, No. 3. PHS Pub. No. 1000. Public Health Service. Washington. U.S. Government Printing Office, Dec. 1967.	1967	National Center for Health Statistics, A. L. Ranofsky: Utilization of short-stay hospitals, summary of nonmedical statistics, United States, 1967. <i>Vital and Health Statistics</i> . Series 13, No. 9. DHEW Pub. No. (HSM) 72-1058. Health Services and Mental Health Administration. Washington. U.S. Government Printing Office, May 1972.
	National Center for Health Statistics, M. J. Witkin: Patients discharged from short-stay hospitals, by size and type of ownership, United States, 1965. <i>Vital and Health Statistics</i> . Series 13, No. 4. PHS Pub. No. 1000. Public Health Service. Washington. U.S. Government Printing Office, Dec. 1968.	1968	National Center for Health Statistics, S. Meads: Surgical operations in short-stay hospitals, United States, 1968. <i>Vital and Health Statistics</i> . Series 13, No. 11. DHEW Pub. No. (HSM) 73-1762. Health Services and Mental Health Administration. Washington. U.S. Government Printing Office, Jan. 1973.
	National Center for Health Statistics, R. O. Gagnon: Regional utilization of short-stay hospitals, United States, 1965. <i>Vital and Health Statistics</i> . Series 13, No. 5. PHS Pub. No. 1000. Public Health Service. Washington. U.S. Government Printing Office, June 1969.		National Center for Health Statistics, A. L. Ranofsky: Inpatient utilization of short-stay hospitals by diagnosis, United States, 1968. <i>Vital and Health Statistics</i> . Series 13, No. 12. DHEW Pub. No. (HSM) 73-1763. Health Services and Mental Health Administration. Washington. U.S. Government Printing Office, Mar. 1973.
	National Center for Health Statistics, E. A. Gray: Inpatient utilization of short-stay hospitals by diagnosis, United States, 1965. <i>Vital and Health Statistics</i> . Series 13, No. 6. PHS Pub. No. 1000. Public Health Service. Washington. U.S. Government Printing Office, May 1970.		National Center for Health Statistics, E. W. Gordon: Average length of stay in short-stay hospitals: Demographic factors, United States, 1968. <i>Vital and Health Statistics</i> . Series 13, No. 13. DHEW Pub. No. (HSM) 73-1764. Health Services and Mental Health Administration. Washington. U.S. Government Printing Office, Apr. 1973.
	National Center for Health Statistics, E. A. Gray and S. Meads: Surgical operations in short-stay hospitals for discharged patients, United States, 1965. <i>Vital and Health Statistics</i> . Series 13, No. 7. PHS Pub. No. 1000. Public Health Service. Washington. U.S. Government Printing Office, Apr. 1971.	1970 ²	National Center for Health Statistics, E. W. Gordon: Utilization of short-stay hospitals, summary of nonmedical statistics, United States, 1970.

¹See footnotes at end of table.

Year(s) of data	Publication	Year(s) of data	Publication
	<i>Vital and Health Statistics</i> . Series 13, No. 14. DHEW Pub. No. (HRA) 74-1765. Health Resources Administration. Washington. U.S. Government Printing Office, Aug. 1973.		76-1775. Health Resources Administration. Washington. U.S. Government Printing Office, May 1976.
1971	National Center for Health Statistics, A. L. Ranofsky: Inpatient utilization of short-stay hospitals by diagnosis, United States, 1971. <i>Vital and Health Statistics</i> . Series 13, No. 16. DHEW Pub. No. (HRA) 75-1767. Health Resources Administration. Washington. U.S. Government Printing Office, July 1974.		National Center for Health Statistics, M. Moien: Inpatient utilization of short-stay hospitals by diagnosis, United States, 1973. <i>Vital and Health Statistics</i> . Series 13, No. 25. DHEW Pub. No. (HRA) 77-1776. Health Resources Administration. Washington. U.S. Government Printing Office, Oct. 1976.
	National Center for Health Statistics, W. F. Lewis: Utilization of short-stay hospitals, summary of non-medical statistics, United States, 1971. <i>Vital and Health Statistics</i> . Series 13, No. 17. DHEW Pub. No. (HRA) 75-1768. Health Resources Administration. Washington. U.S. Government Printing Office, Aug. 1974.	1974	National Center for Health Statistics, A. L. Ranofsky: Utilization of short-stay hospitals: Annual summary for the United States, 1974. <i>Vital and Health Statistics</i> . Series 13, No. 26. DHEW Pub. No. (HRA) 76-1777. Health Resources Administration. Washington. U.S. Government Printing Office, Sept. 1976.
	National Center for Health Statistics, G. E. Blanken: Surgical operations in short-stay hospitals, United States, 1971. <i>Vital and Health Statistics</i> . Series 13, No. 18. DHEW Pub. No. (HRA) 75-1769. Health Resources Administration. Washington. U.S. Government Printing Office, Nov. 1974.		National Center for Health Statistics, L. S. Glickman: Inpatient utilization of short-stay hospitals by diagnosis, United States, 1974. <i>Vital and Health Statistics</i> . Series 13, No. 30. DHEW Pub. No. (HRA) 77-1783. Health Resources Administration. Washington. U.S. Government Printing Office, July 1977.
1972	National Center for Health Statistics, W. F. Lewis: Utilization of short-stay hospitals, summary of non-medical statistics, United States, 1972. <i>Vital and Health Statistics</i> . Series 13, No. 19. DHEW Pub. No. (HRA) 75-1770. Health Resources Administration. Washington. U.S. Government Printing Office, June 1975.	1975	National Center for Health Statistics, A. L. Ranofsky: Utilization of short-stay hospitals: Annual summary for the United States, 1975. <i>Vital and Health Statistics</i> . Series 13, No. 31. DHEW Pub. No. (HRA) 77-1782. Health Resources Administration. Washington. U.S. Government Printing Office, Apr. 1977.
	National Center for Health Statistics, M. Moien: Inpatient utilization of short-stay hospitals by diagnosis, United States, 1972. <i>Vital and Health Statistics</i> . Series 13, No. 20. DHEW Pub. No. (HRA) 76-1771. Health Resources Administration. Washington. U.S. Government Printing Office, Nov. 1975.		National Center for Health Statistics, A. L. Ranofsky: Surgical operations in short-stay hospitals, United States, 1975. <i>Vital and Health Statistics</i> . Series 13, No. 34. DHEW Pub. No. (PHS) 78-1785. Public Health Service. Washington. U.S. Government Printing Office, Apr. 1978.
1973	National Center for Health Statistics, W. F. Lewis: Utilization of short-stay hospitals, summary of non-medical statistics, United States, 1973. <i>Vital and Health Statistics</i> . Series 13, No. 23. DHEW Pub. No. (HRA) 76-1774. Health Resources Administration. Washington. U.S. Government Printing Office, July 1976.		National Center for Health Statistics, L. Glickman: Inpatient utilization of short-stay hospitals by diagnosis, United States, 1975. <i>Vital and Health Statistics</i> . Series 13, No. 35. DHEW Pub. No. (PHS) 78-1786. Public Health Service. Washington. U.S. Government Printing Office, Apr. 1978.
	National Center for Health Statistics, A. L. Ranofsky: Surgical operations in short-stay hospitals, United States, 1973. <i>Vital and Health Statistics</i> . Series 13, No. 24. DHEW Pub. No. (HRA)	1976	National Center for Health Statistics, A. L. Ranofsky: Utilization of short-stay hospitals: Annual summary for the United States, 1976. <i>Vital and Health Statistics</i> . Series 13, No. 37. DHEW Pub. No. (PHS) 78-1788. Public Health Service. Washington. U.S. Government Printing Office, June 1978.

Year(s) of data	Publication	Year(s) of data	Publication
	National Center for Health Statistics, M. Sanchez and M. Moien: Utilization of short-stay hospitals by persons discharged with alcohol-related diagnoses, United States, 1976. <i>Vital and Health Statistics</i> . Series 13, No. 47. DHHS Pub. No. (PHS) 80-1798. Public Health Service. Washington. U.S. Government Printing Office, May 1980.		<i>Patients Discharged From Short-Stay Hospitals, United States, 1978</i> . DHHS Pub. No. (PHS) 80-1274. Public Health Service. Washington. U.S. Government Printing Office, Sept. 1980.
1977	National Center for Health Statistics, B. J. Haupt: Utilization of short-stay hospitals, annual summary of the United States, 1977. <i>Vital and Health Statistics</i> . Series 13, No. 41. DHEW Pub. No. (PHS) 79-1792. Public Health Service. Washington. U.S. Government Printing Office, Mar. 1979.		National Center for Health Statistics, E. McCarthy: Inpatient utilization of short-stay hospitals by diagnosis, United States, 1978. <i>Vital and Health Statistics</i> . Series 13, No. 55. DHHS Pub. No. (PHS) 81-1716. Public Health Service. Washington. U.S. Government Printing Office, Aug. 1981.
	National Center for Health Statistics, B. J. Haupt: <i>Detailed Diagnoses and Surgical Procedures for Patients Discharged From Short-Stay Hospitals, United States, 1977</i> . DHEW Pub. No. (PHS) 79-1274. Public Health Service. Washington. U.S. Government Printing Office, Sept. 1979.		National Center for Health Statistics, E. Hing and B. K. Cypress: Use of health services by women 65 years of age and over, United States. <i>Vital and Health Statistics</i> . Series 13, No. 59. DHHS Pub. No. (PHS) 81-1720. Public Health Service. Washington. U.S. Government Printing Office, Aug. 1981.
	National Center for Health Statistics, R. Pokras and G. Gardocki: Expected principal source of payment for hospital discharges, United States, 1977. <i>Advance Data From Vital and Health Statistics</i> . No. 62. DHHS Pub. No. (PHS) 81-1250. Public Health Service. Hyattsville, Md., Oct. 31, 1980.		National Center for Health Statistics, R. Pokras, E. Graves, and C. Dennison: Surgical operations in short-stay hospitals, United States, 1978. <i>Vital and Health Statistics</i> . Series 13, No. 61. DHHS Pub. No. (PHS) 82-1722. Public Health Service. Washington. U.S. Government Printing Office, Mar. 1982.
	National Center for Health Statistics, W. F. Lewis: Average length of stay in short-stay hospitals, demographic, diagnostic, and surgical statistics, United States, 1977. <i>Vital and Health Statistics</i> . Series 13, No. 50. DHHS Pub. No. (PHS) 81-1711. Public Health Service. Washington. U.S. Government Printing Office, Jan. 1981.	1979	National Center for Health Statistics, B. J. Haupt: Utilization of short-stay hospitals, annual summary for the United States, 1979. <i>Vital and Health Statistics</i> . Series 13, No. 60. DHHS Pub. No. (PHS) 82-1721. Public Health Service. Washington. U.S. Government Printing Office, Nov. 1981.
	National Center for Health Statistics, G. J. Gardocki: Utilization of short-stay hospitals by persons with heart disease and malignant neoplasms: National Hospital Discharge Survey, 1977. <i>Vital and Health Statistics</i> . Series 13, No. 52. DHHS Pub. No. (PHS) 81-1713. Public Health Service. Washington. U.S. Government Printing Office, Apr. 1981.		National Center for Health Statistics, B. J. Haupt and E. Graves: <i>Detailed Diagnoses and Surgical Procedures for Patients Discharged From Short-Stay Hospitals, United States, 1979</i> . DHHS Pub. No. (PHS) 82-1274-1. Public Health Service. Washington. U.S. Government Printing Office, Jan. 1982.
1978	National Center for Health Statistics, B. J. Haupt: Utilization of short-stay hospitals, annual summary for the United States, 1978. <i>Vital and Health Statistics</i> . Series 13, No. 46. DHEW Pub. No. (PHS) 80-1797. Public Health Service. Washington. U.S. Government Printing Office, Mar. 1980.		National Center for Health Statistics, E. Graves and R. Pokras: Expected principal source of payment for hospital discharges, United States, 1979. <i>Advance Data From Vital and Health Statistics</i> . No. 75. DHHS Pub. No. (PHS) 82-1250. Public Health Service. Hyattsville, Md., Feb. 16, 1982.
	National Center for Health Statistics, B. J. Haupt: <i>Detailed Diagnoses and Surgical Procedures for</i>		National Center for Health Statistics, E. McCarthy: Inpatient utilization of short-stay hospitals by diagnosis, United States, 1979. <i>Vital and Health Statistics</i> . Series 13, No. 69. DHHS Pub. No. (PHS) 83-1730. Public Health Service. Washington. U.S. Government Printing Office, Dec. 1982.

Year(s) of data	Publication	Year(s) of data	Publication
	National Center for Health Statistics, R. Pokras: Surgical and nonsurgical procedures in short-stay hospitals, United States, 1979. <i>Vital and Health Statistics</i> . Series 13, No. 70. DHHS Pub. No. (PHS) 83-1731. Public Health Service. Washington. U.S. Government Printing Office, Feb. 1983.		National Center for Health Statistics, E. Graves: Utilization of short-stay hospitals by adolescents, United States, 1980. <i>Advance Data From Vital and Health Statistics</i> . No. 93. DHHS Pub. No. (PHS) 83-1250. Public Health Service. Hyattsville, Md., Sept. 14, 1983.
1980	National Center for Health Statistics, B. J. Haupt: Utilization of short-stay hospitals, annual summary for the United States, 1980. <i>Vital and Health Statistics</i> . Series 13, No. 64. DHHS Pub. No. (PHS) 82-1725. Public Health Service. Washington. U.S. Government Printing Office, Mar. 1982.	1966-68	National Center for Health Statistics, K. L. Hoffman: Inpatient utilization of short-stay hospitals in each geographic division, United States, 1966-1968. <i>Vital and Health Statistics</i> . Series 13, No. 10. DHEW Pub. No. (HSM) 73-1761. Health Services and Mental Health Administration. Washington. U.S. Government Printing Office, Nov. 1972.
	National Center for Health Statistics, B. J. Haupt: Deliveries in short-stay hospitals: United States, 1980. <i>Advance Data From Vital and Health Statistics</i> . No. 83. DHHS Pub. No. (PHS) 82-1250. Public Health Service. Hyattsville, Md., Oct. 8, 1982.	1968-70	National Center for Health Statistics, M. Moien: Patient charges in short-stay hospitals, United States, 1968-70. <i>Vital and Health Statistics</i> . Series 13, No. 15. DHEW Pub. No. (HRA) 74-1766. Health Resources Administration. Washington. U.S. Government Printing Office, June 1974.
	National Center for Health Statistics, E. McCarthy: Inpatient utilization of short-stay hospitals by diagnosis, United States, 1980. <i>Vital and Health Statistics</i> . Series 13, No. 74. DHHS Pub. No. (PHS) 83-1734. Public Health Service. Washington. U.S. Government Printing Office, Sept. 1983.	1974-78	National Center for Health Statistics, E. Graves and C. Lovato: Utilization of short-stay hospitals in the treatment of mental disorders, 1974-1978. <i>Advance Data From Vital and Health Statistics</i> . No. 70. DHHS Pub. No. (PHS) 81-1250. Public Health Service. Hyattsville, Md., May 22, 1981.

¹The 1965 estimates in Series 13, Nos. 2-5, include sick newborn infants, who are excluded from the estimates in subsequent reports.

²The 1970 estimates published in Series 13, No. 14, were based on noncoded abstracts. When the medical data from the abstracts were coded and weighted, the estimates were revised slightly.

Vital and Health Statistics Series descriptions

- SERIES 1. Programs and Collection Procedures**—Reports describing the general programs of the National Center for Health Statistics and its offices and divisions and the data collection methods used. They also include definitions and other material necessary for understanding the data.
- SERIES 2. Data Evaluation and Methods Research**—Studies of new statistical methodology including experimental tests of new survey methods, studies of vital statistics collection methods, new analytical techniques, objective evaluations of reliability of collected data, and contributions to statistical theory. Studies also include comparison of U.S. methodology with those of other countries.
- SERIES 3. Analytical and Epidemiological Studies**—Reports presenting analytical or interpretive studies based on vital and health statistics, carrying the analysis further than the expository types of reports in the other series.
- SERIES 4. Documents and Committee Reports**—Final reports of major committees concerned with vital and health statistics and documents such as recommended model vital registration laws and revised birth and death certificates.
- SERIES 5. Comparative International Vital and Health Statistics Reports**—Analytical and descriptive reports comparing U.S. vital and health statistics with those of other countries.
- SERIES 10. Data From the National Health Interview Survey**—Statistics on illness, accidental injuries, disability, use of hospital, medical, dental, and other services, and other health-related topics, all based on data collected in the continuing national household interview survey.
- SERIES 11. Data From the National Health Examination Survey and the National Health and Nutrition Examination Survey**—Data from direct examination, testing, and measurement of national samples of the civilian noninstitutionalized population provide the basis for (1) estimates of the medically defined prevalence of specific diseases in the United States and the distributions of the population with respect to physical, physiological, and psychological characteristics and (2) analysis of relationships among the various measurements without reference to an explicit finite universe of persons.
- SERIES 12. Data From the Institutionalized Population Surveys**—Discontinued in 1975. Reports from these surveys are included in Series 13.
- SERIES 13. Data on Health Resources Utilization**—Statistics on the utilization of health manpower and facilities providing long-term care, ambulatory care, hospital care, and family planning services.
- SERIES 14. Data on Health Resources: Manpower and Facilities**—Statistics on the numbers, geographic distribution, and characteristics of health resources including physicians, dentists, nurses, other health occupations, hospitals, nursing homes, and outpatient facilities.
- SERIES 15. Data From Special Surveys**—Statistics on health and health-related topics collected in special surveys that are not a part of the continuing data systems of the National Center for Health Statistics.
- SERIES 20. Data on Mortality**—Various statistics on mortality other than as included in regular annual or monthly reports. Special analyses by cause of death, age, and other demographic variables; geographic and time series analyses; and statistics on characteristics of deaths not available from the vital records based on sample surveys of those records.
- SERIES 21. Data on Natality, Marriage, and Divorce**—Various statistics on natality, marriage, and divorce other than as included in regular annual or monthly reports. Special analyses by demographic variables; geographic and time series analyses; studies of fertility; and statistics on characteristics of births not available from the vital records based on sample surveys of those records.
- SERIES 22. Data From the National Mortality and Natality Surveys**—Discontinued in 1975. Reports from these sample surveys based on vital records are included in Series 20 and 21, respectively.
- SERIES 23. Data From the National Survey of Family Growth**—Statistics on fertility, family formation and dissolution, family planning, and related maternal and infant health topics derived from a periodic survey of a nationwide probability sample of ever-married women 15-44 years of age.

For a list of titles of reports published in these series, write to:

Scientific and Technical Information Branch
National Center for Health Statistics
Public Health Service
Hyattsville, Md. 20782

or call 301-436-8500

U.S. DEPARTMENT OF HEALTH AND
HUMAN SERVICES
Public Health Service
National Center for Health Statistics
3700 East-West Highway
Hyattsville, Maryland 20782

OFFICIAL BUSINESS
PENALTY FOR PRIVATE USE, \$300