

# Managing the Process and Needs of Cluster Investigations

ATSDR's Environmental Epidemiology Branch: Technical Consultation and Assistance

Elizabeth Irvin-Barnwell, PhD  
Chief (Acting), Environmental Epidemiology Branch  
April 25, 2019



National Center for Environmental Health  
Agency for Toxic Substances and Disease Registry



# Agency for Toxic Substances and Disease Registry

## Mission and Impact

### ▪ **Mission**

- ATSDR protects communities from harmful health effects related to exposure to natural and man-made hazardous substances. We do this by responding to environmental health emergencies; investigating emerging environmental health threats; conducting research on the health impacts of hazardous waste sites; and building capabilities of and providing actionable guidance to state and local health partners.

### ▪ **Impact**

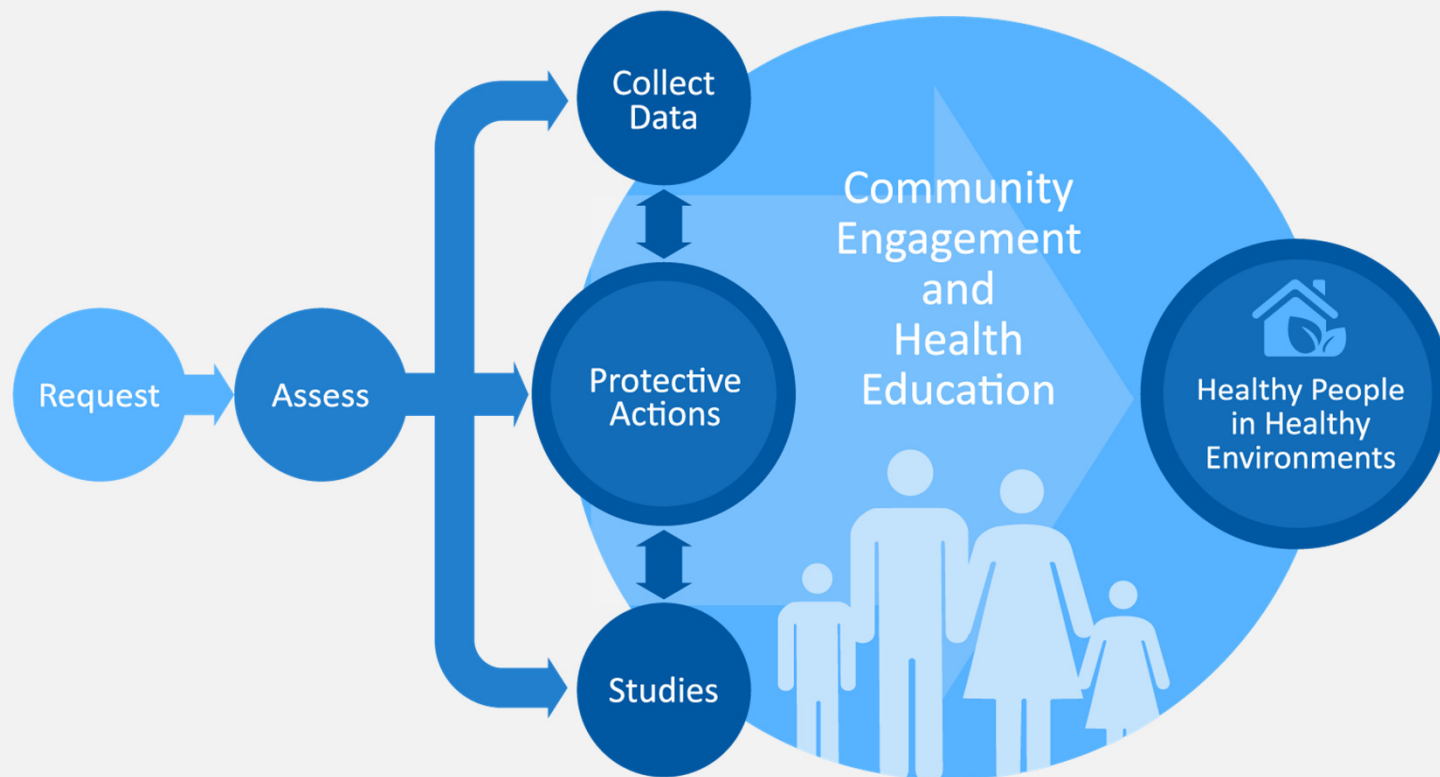
- Reduce morbidity and mortality related to exposure to natural and man-made toxic substances.

## ATSDR Focus

- **Congressionally mandated to**
  - Perform public health assessments at hazardous waste sites
  - Develop toxicological profiles on harmful substances
  - Conduct epidemiological health studies
  - Maintain health registries and conduct medical surveillance
- **Regional offices give national presence**
- **Community engagement key**



# Protecting Communities



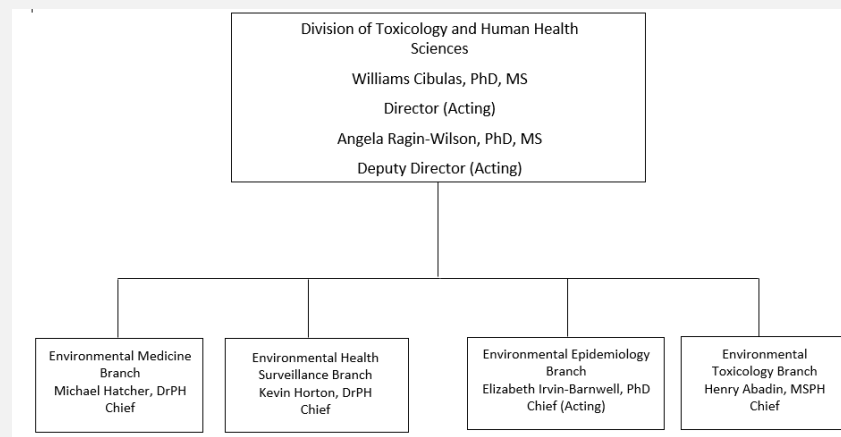
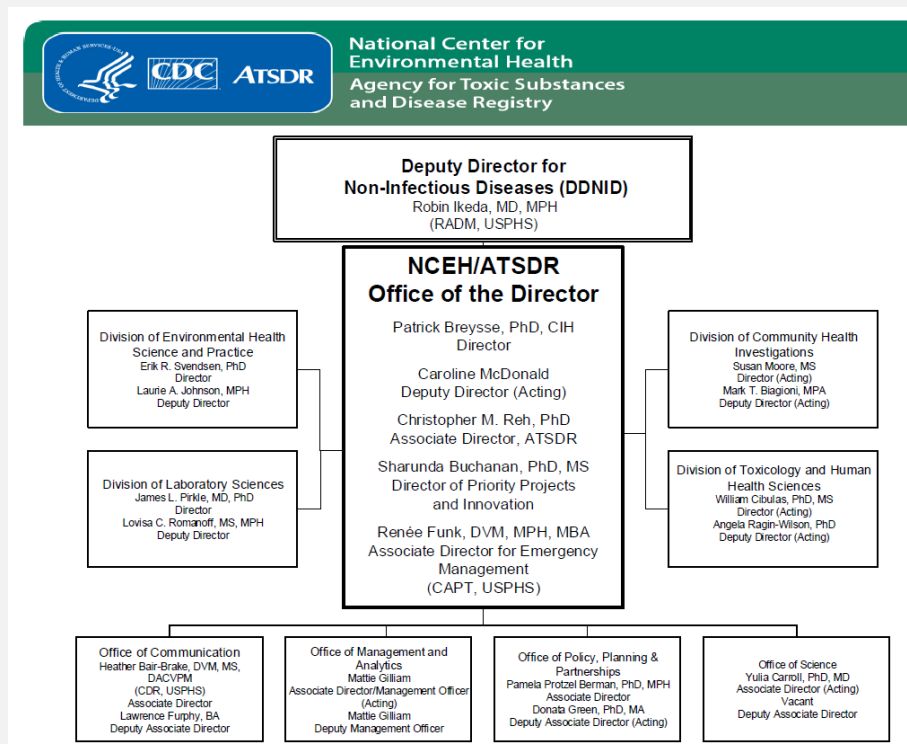
## Protecting Communities: What it takes

- **Extensive staff expertise**

- Toxicology
- Exposure Science
- Environmental Science
- Epidemiology
- Risk Science
- Environmental Medicine
- Physical Science and Engineering (radiation, hydrology, modeling, etc.)
- Health Education and Community Engagement



# Organizational Chart



## Environmental Epidemiology Branch

The Environmental Epidemiology Branch (EEB) designs and conducts environmental epidemiology studies to evaluate the association between exposure to environmental contaminants and adverse health effects.

Ongoing health studies/projects include:

- ❑ Anniston Community Health Survey
- ❑ Biomonitoring of Great Lakes Populations
- ❑ Camp Lejeune Cancer Incidence Study
- ❑ Comprehensive Disaster Assessment and Readiness Toolkit Project
- ❑ PFAS Health Study Initiative
- ❑ Polycythemia Vera Cancer Cluster Investigation
- ❑ Synthetic Turf Investigation

## Technical Advice, Consultation, and Assistance

- ***ATSDR's Partnership to Promote Local Efforts to Reduce Environmental Exposure (APPLETREE) Program***
  - EEB staff provide epidemiological guidance and assistance to 25 state health department grantees for site-specific work.
- **Technical Reviews**
  - EEB staff provide technical reviews of epidemiological reports, such as cancer incidence analyses, when formally requested by the state or local health department.
- **Technical Assistance**
  - EEB staff provide technical assistance, such as epidemiological guidance.



## Technical Advice, Consultation, and Assistance - Examples

- ***ATSDR's Partnership to Promote Local Efforts to Reduce Environmental Exposure (APPLETREE) Program***
  - Reviewed site-specific health outcome data reports
- **Technical Reviews**
  - Reviewed cancer incidence analysis reports
- **Technical Assistance**
  - Provided statistical expertise for Bayes empirical modeling

# Questions?



For more information, contact NCEH/ATSDR  
1-800-CDC-INFO (232-4636)  
TTY: 1-888-232-6348      [www.atsdr.cdc.gov](http://www.atsdr.cdc.gov)      [www.cdc.gov](http://www.cdc.gov)  
Follow us on Twitter @CDCEnvironment

The findings and conclusions in this report are those of the authors and do not necessarily represent the official position of the Centers for Disease Control and Prevention and the Agency for Toxic Substances and Disease Registry.

