

# Indigenous Approach to Forest Management by the Cow Creek Band of Umpqua Tribe of Indians And the Impacts of Federal Management on the Tribal Community



Presented to:  
**CDC Tribal Visit**  
August 8, 2024



# New Management vs. Old Management....?

Indigenous Approach to Conservation

vs.

Colonial NWFP Reserve Based Conservation

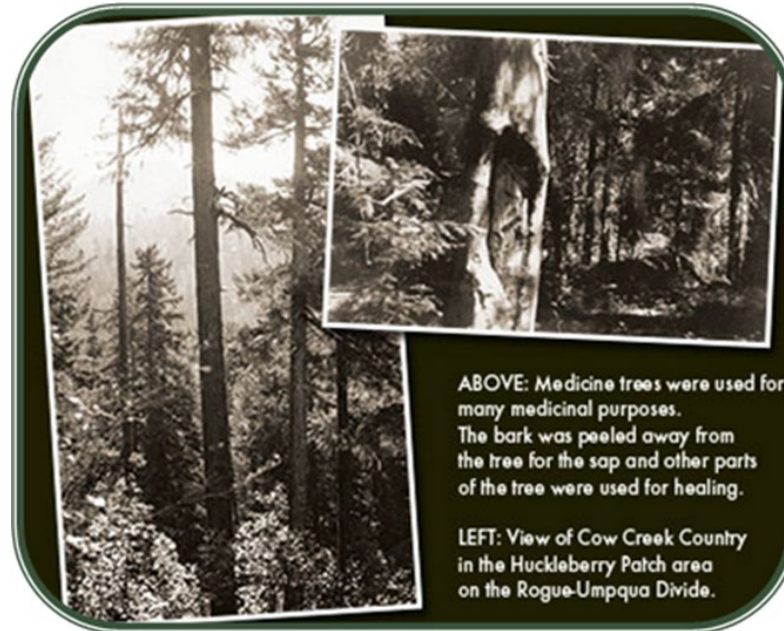
# Tribal Management

# Tribal Interest In Forest Lands - Past....

- ▶ Every acre of forestland is Tribal Ancestral Homelands
- ▶ Hunting, gathering, burial....the family farm.



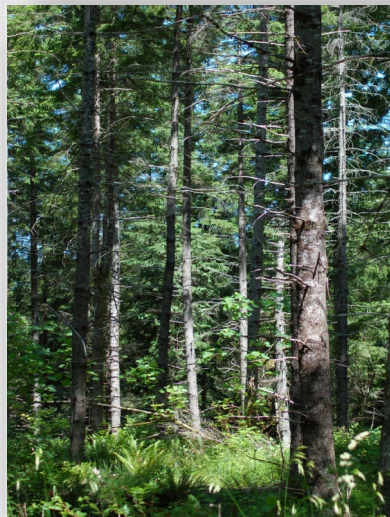
Joe and Walter Rainville crossing the natural bridge on the Rogue River.



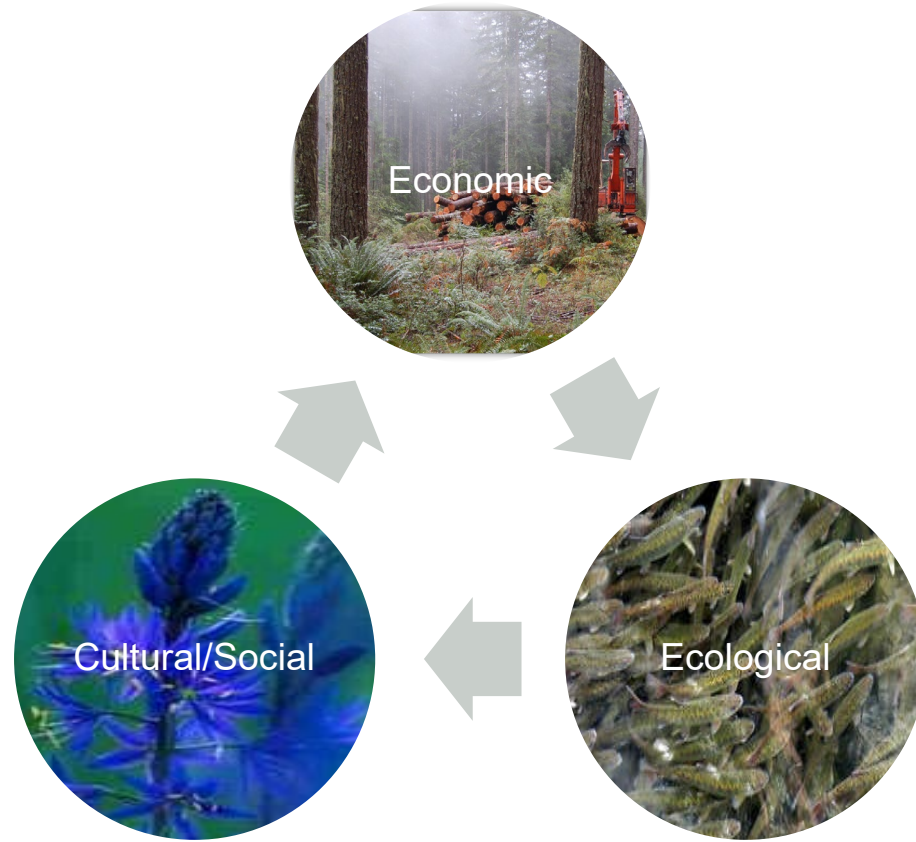
ABOVE: Medicine trees were used for many medicinal purposes. The bark was peeled away from the tree for the sap and other parts of the tree were used for healing.

LEFT: View of Cow Creek Country in the Huckleberry Patch area on the Rogue-Umpqua Divide.

# Tribal Interest In Forest Lands -Present...



# Goals of Cow Creek Forest Management



I. Plan



II. Implement



III. Monitor



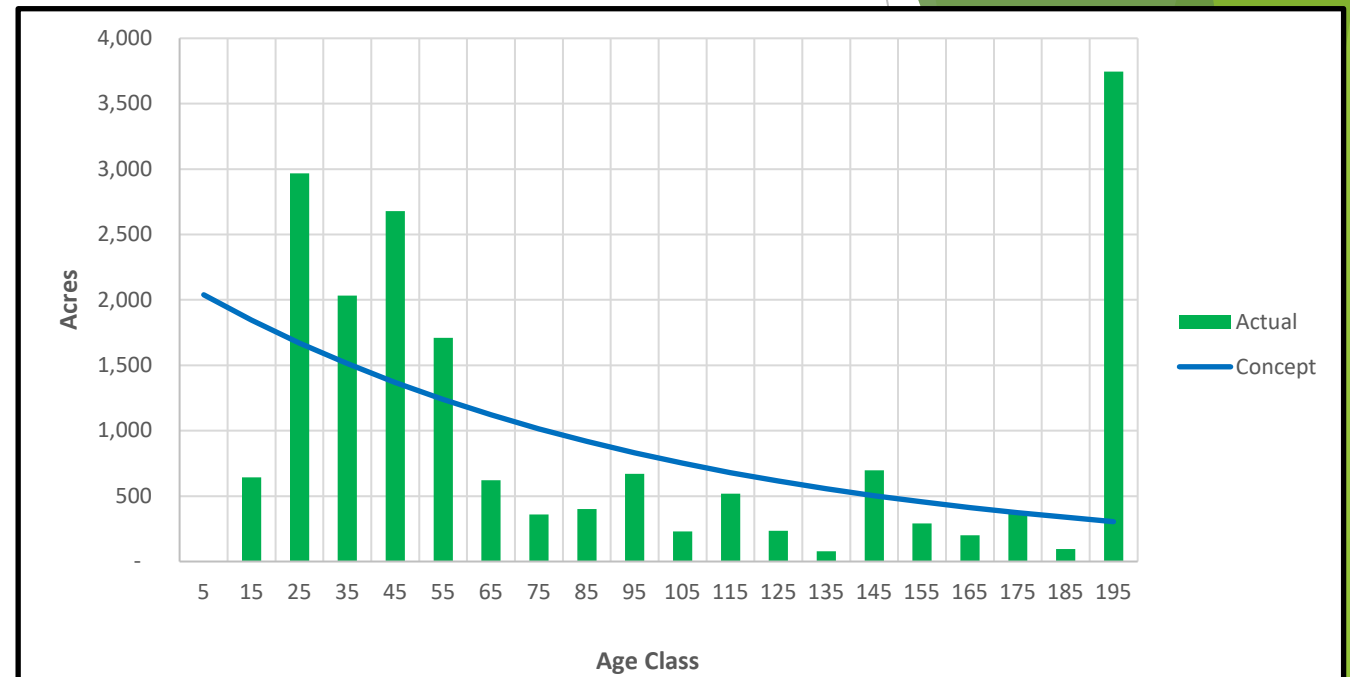
IV. Adapt



# Continuous Forest Management

- ▶ Allow active management across the whole forest landscape with no or minimal no harvest zones,
- ▶ Include all forest ecosystem components,
- ▶ Adapt forest practices to specific site conditions: slope, aspect, elevation, soil, and climatic changes,
- ▶ Create a continuing set of adaptive management installations to test alternative methods and foster continual improvement.

## Actual and Concept Acres by 10-Year Age Class



## Sustainable Forestry Cycle



New Forest Thinning Stand Management Protection Harvest Planning New Forest











# Cow Creek Indigenous Approach to Conservation and Management of Special Areas

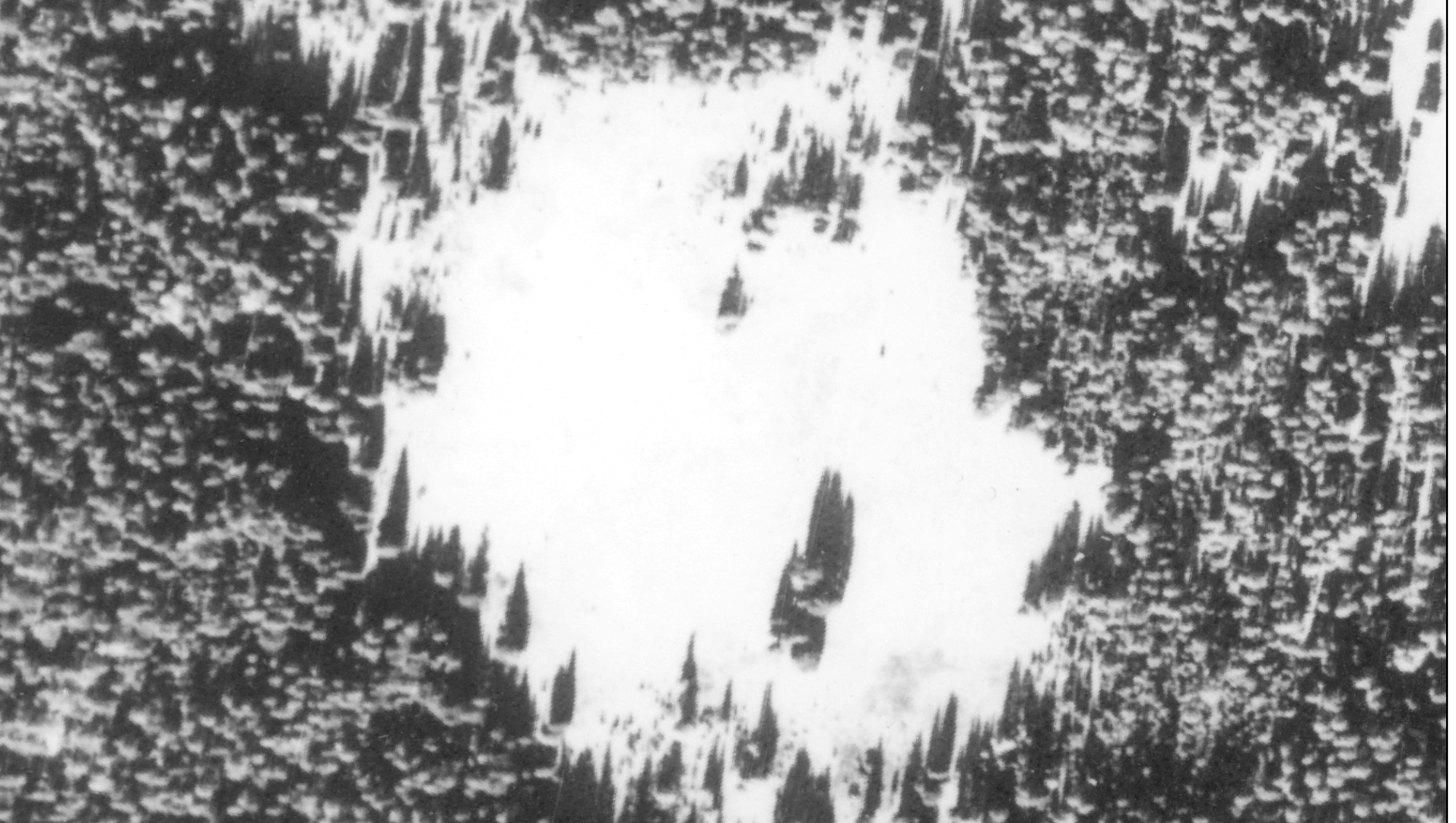
## Management Direction

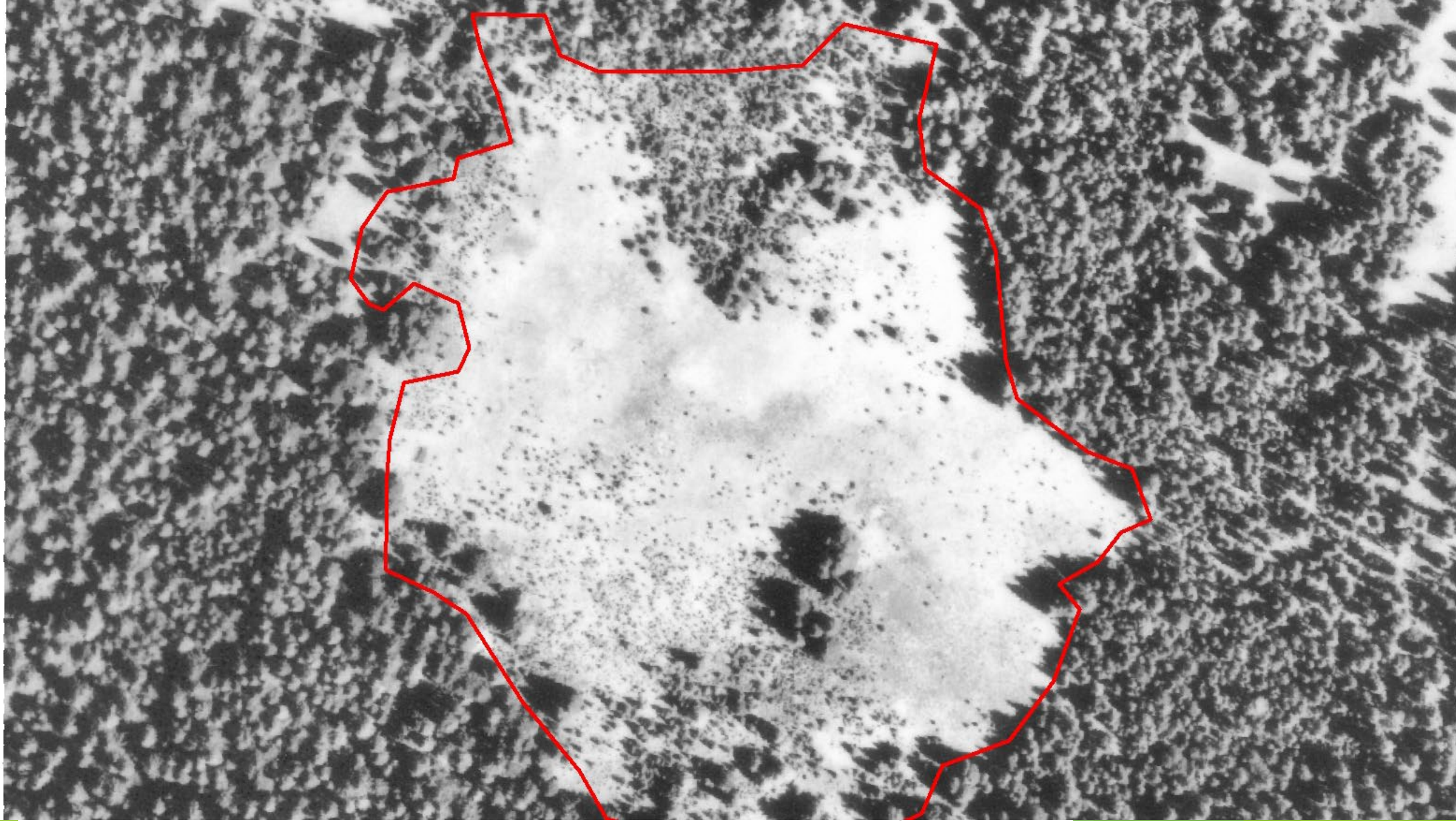
- ▶ A tribal vision for the forest was developed based on Tribal values.
  - ▶ Hunting, gathering, economic self sufficiency, water, fisheries, etc.
- ▶ “A Reservation without Reserves”
  - ▶ All lands are managed to best fulfill tribal values.

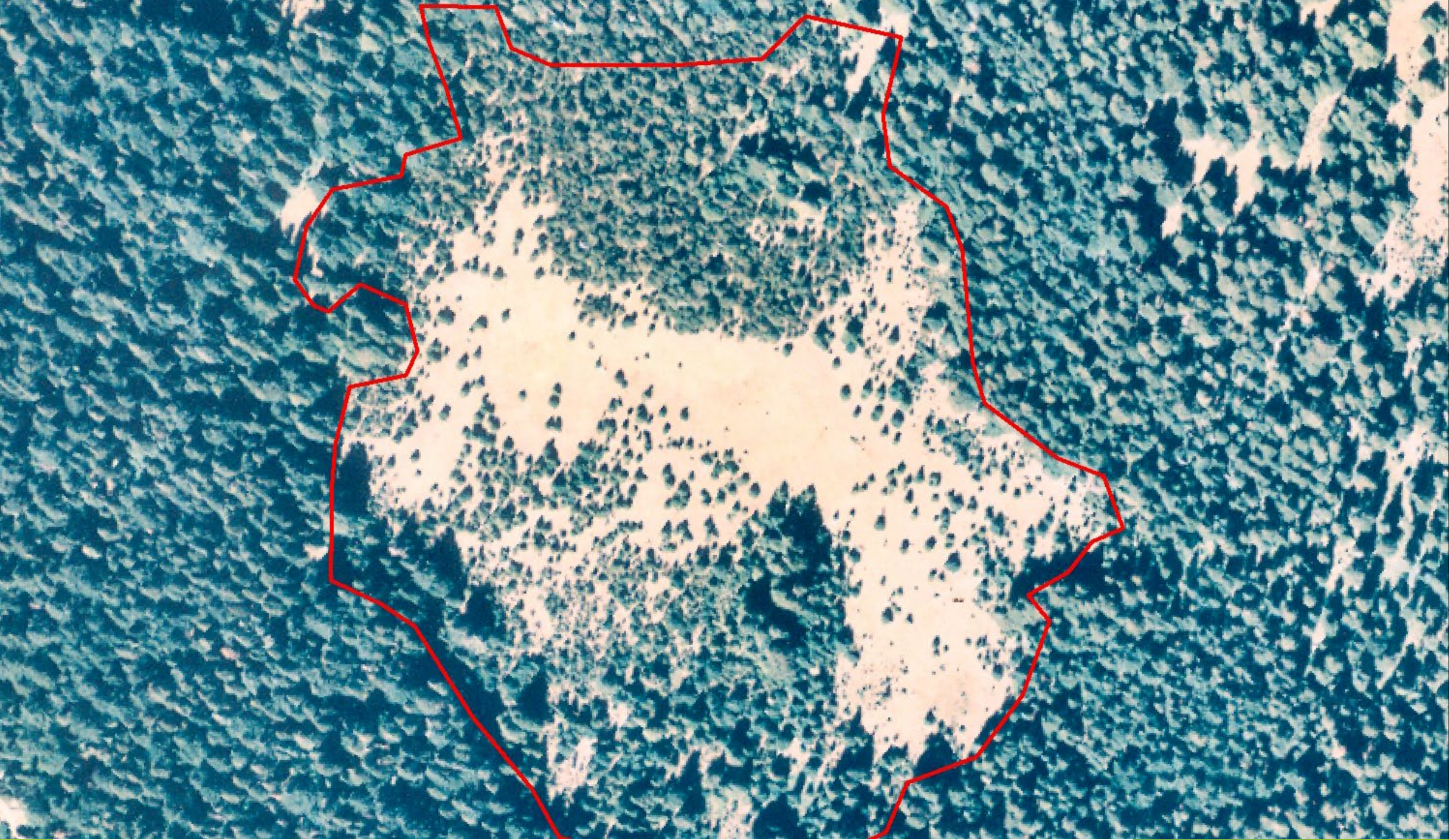


# A case Study of: Indigenous Conservation

- ▶ The purpose of this project: To protect, maintain and enhance a naturally occurring ridge-top prairie/meadow complex.













# Meadow Restoration (What We Did)

- ▶ Removal of conifer tree islands and large stem conifers from meadow margins



# Burning for Cultural Purposes

- ▶ As a management tool.....
  - ▶ Reduce or eliminate woody debris/fuels in areas of human use;
  - ▶ Accomplish desired ecologies and habitats;
  - ▶ Encourage or discourage natural regeneration of particular plants and plant colonies;







# What Cow Creek “Indigenous Conservation” is not.....

- ▶ Reserve System Management
  - ▶ Hands Off Approach
  - ▶ Artificial Buffers
  - ▶ Land Allocation Reserves/Reservations
  - ▶ Exclusion of Management
  - ▶ Avoidance
  - ▶ Protect through Neglect
  - ▶ Zoning/Land Use Allocations





# What “Indigenous Conservation and Management” is.....

## ► Interactive Management

► Associated, mutual, interdependent, and reciprocal....

►  $\pi \cdot \tilde{A} \pi$ ,  $\tilde{A} \pi \ll \pi \geq \pi \pi \dagger \pi \geq \tilde{A} \pi$   
 $, 1 \pi \ll \pi \dagger \dagger \cdot \dagger \ll \pi \Delta \tilde{A} \ll \pi$



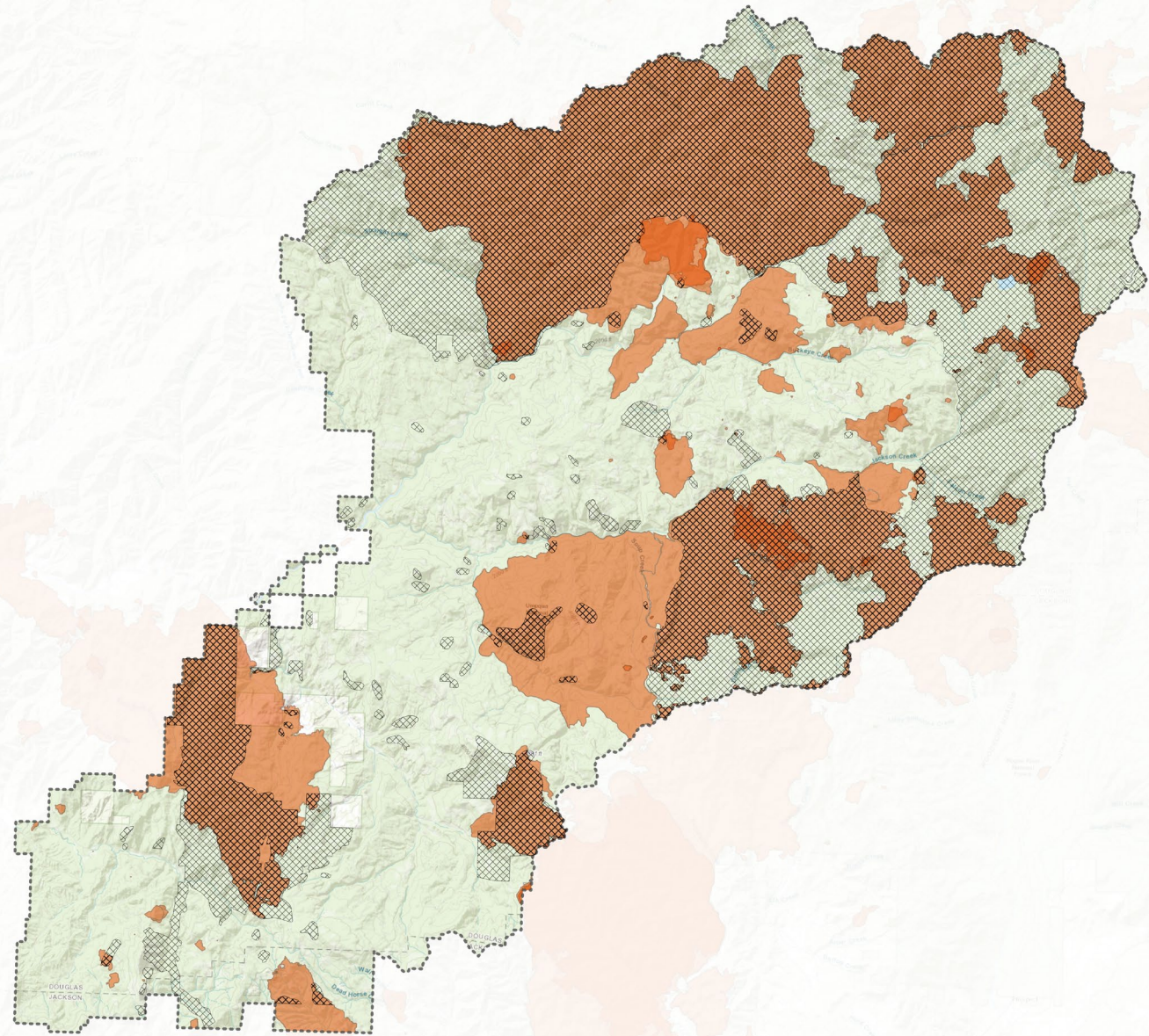
# Reserve Based Conservation.....

## ▶ Management Exclusion

- ▶ Assumes a static state system.
- ▶ Forest blocks are intended to function as ecological lifeboat.
  - ▶ When something is deemed to be special, management is excluded. Human influence is excluded.

# Tiller Ranger District Fire Map

- ▶ Tiller Ranger District is 362,440 acres in size. Of that, 145,930 acres have burned at least once since 1990.
- ▶ Total amount of Reserve/Restricted Management Area in the district is 179,172 acres. Of that, 106,278 acres burned.
- ▶ Of the 145,930 acres that burned, only 39,652 acres were outside a Reserve Areas (27%).

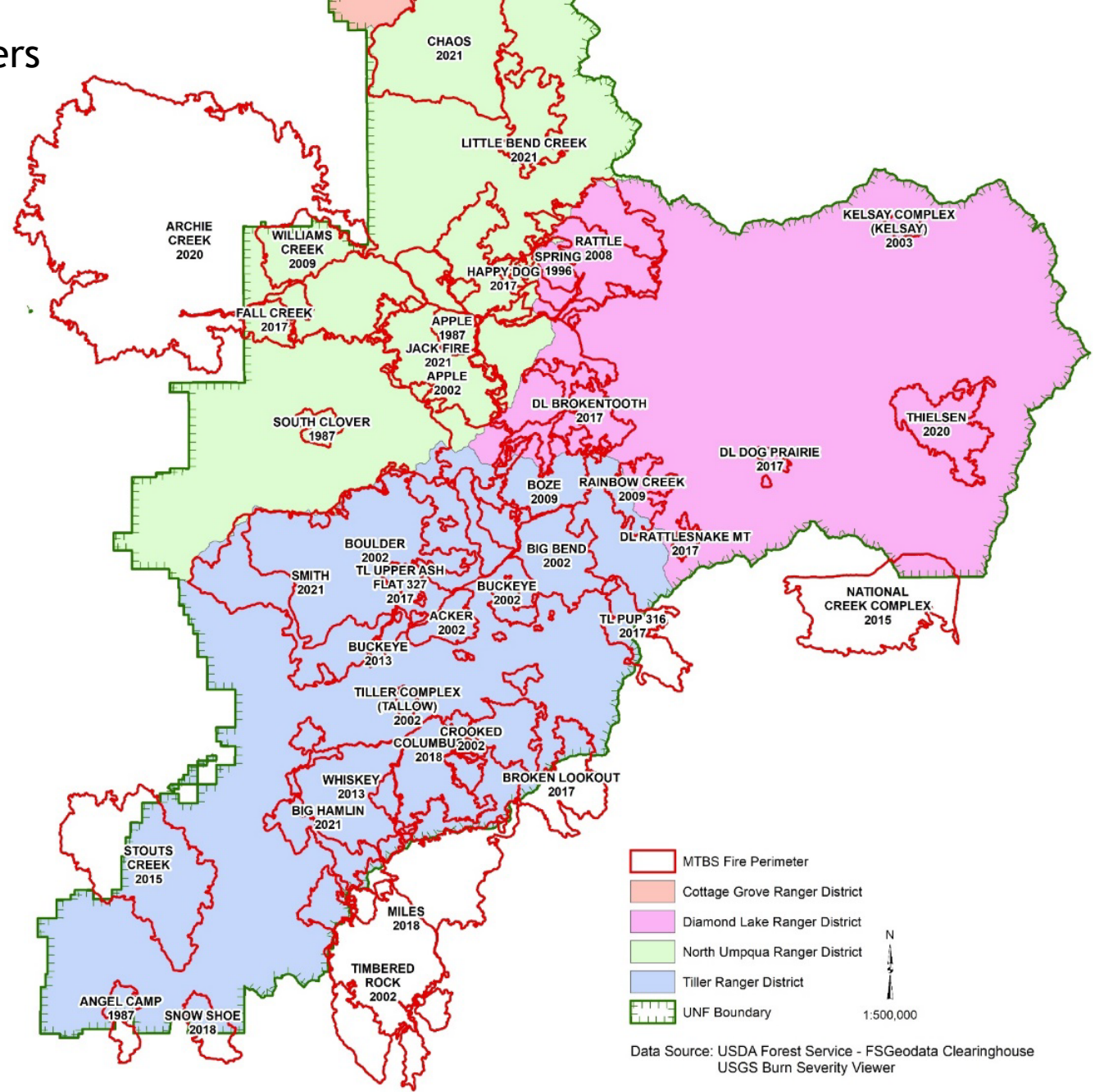


**TILLER RANGER DISTRICT**  
**FIRE HISTORY & LAND USE ALLOCATION**  
COW CREEK | NATURAL RESOURCES  
This product is for the sole purpose of geographic reference.  
No warranty is made by CCBUT regarding specific accuracy or completeness.  
Historic fire boundaries vary by data source. Acreages are approximate.  
Map Credits: Jackson County, OR, BLM, State of Oregon, USGS, USFS, ESRI

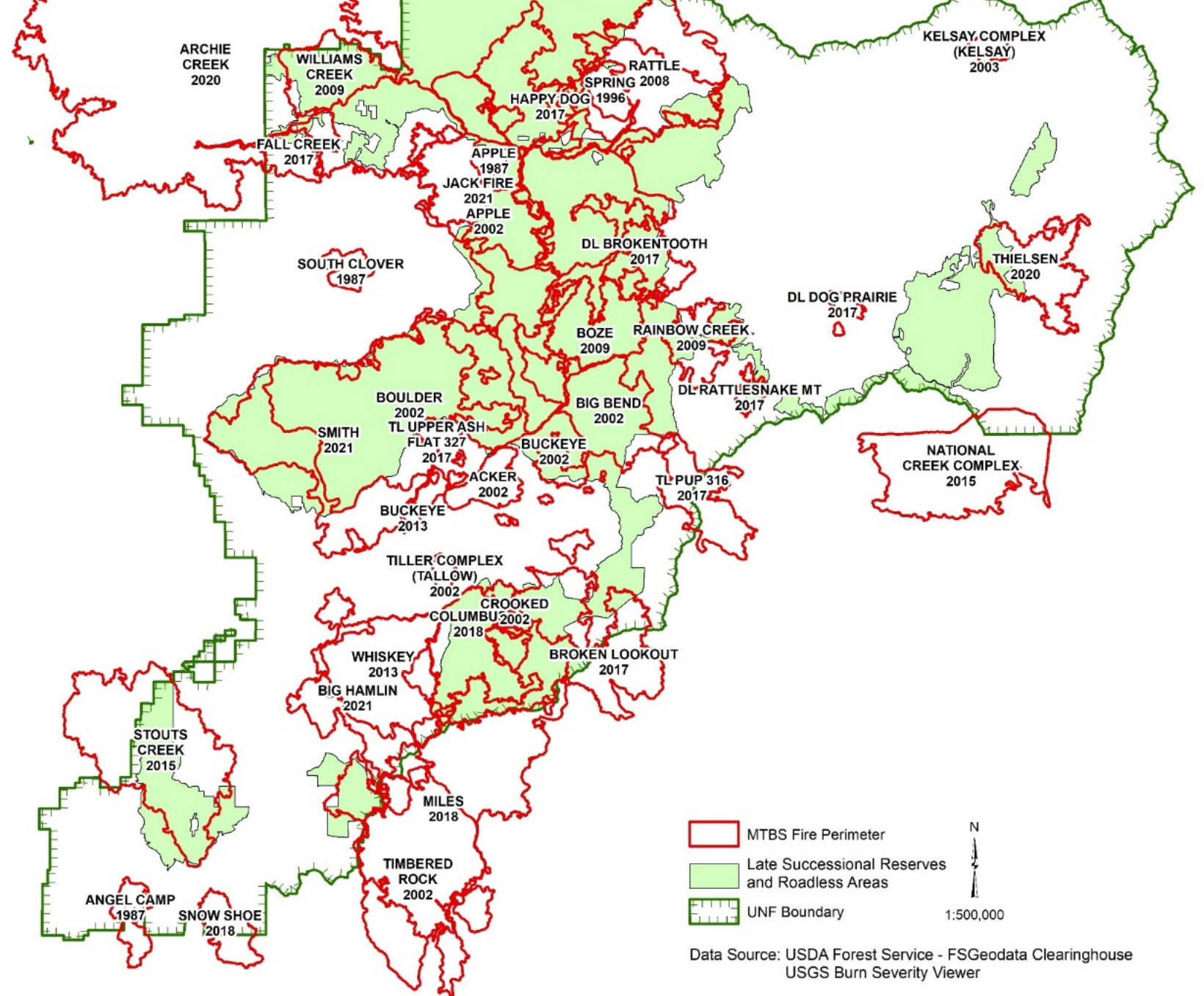


--- Tiller Ranger District  
--- Restricted Management Areas  
--- Fire Incidents (1990-Present)  
--- NSO Activity Areas

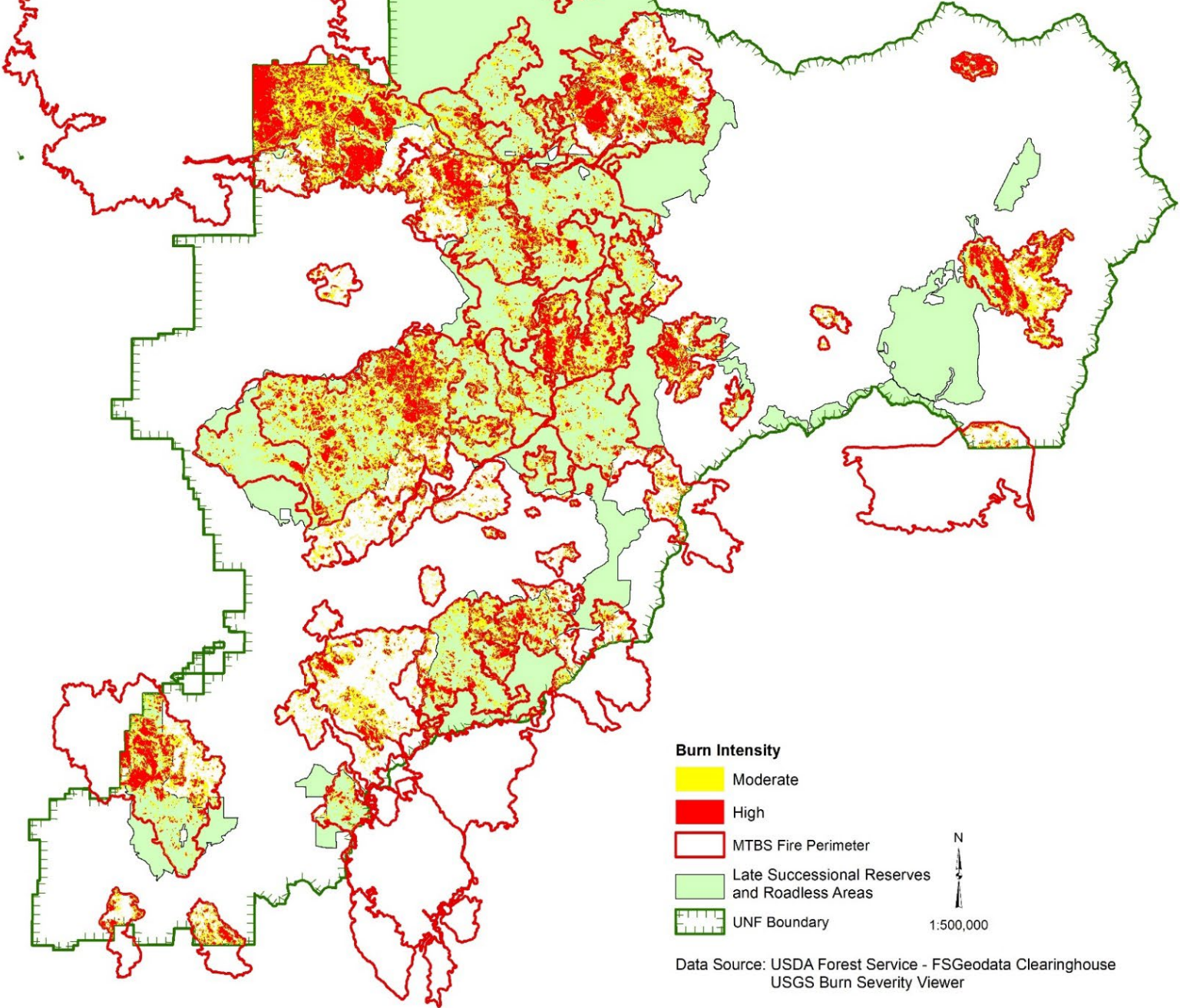
# Umpqua National Forest with Fire Perimeters



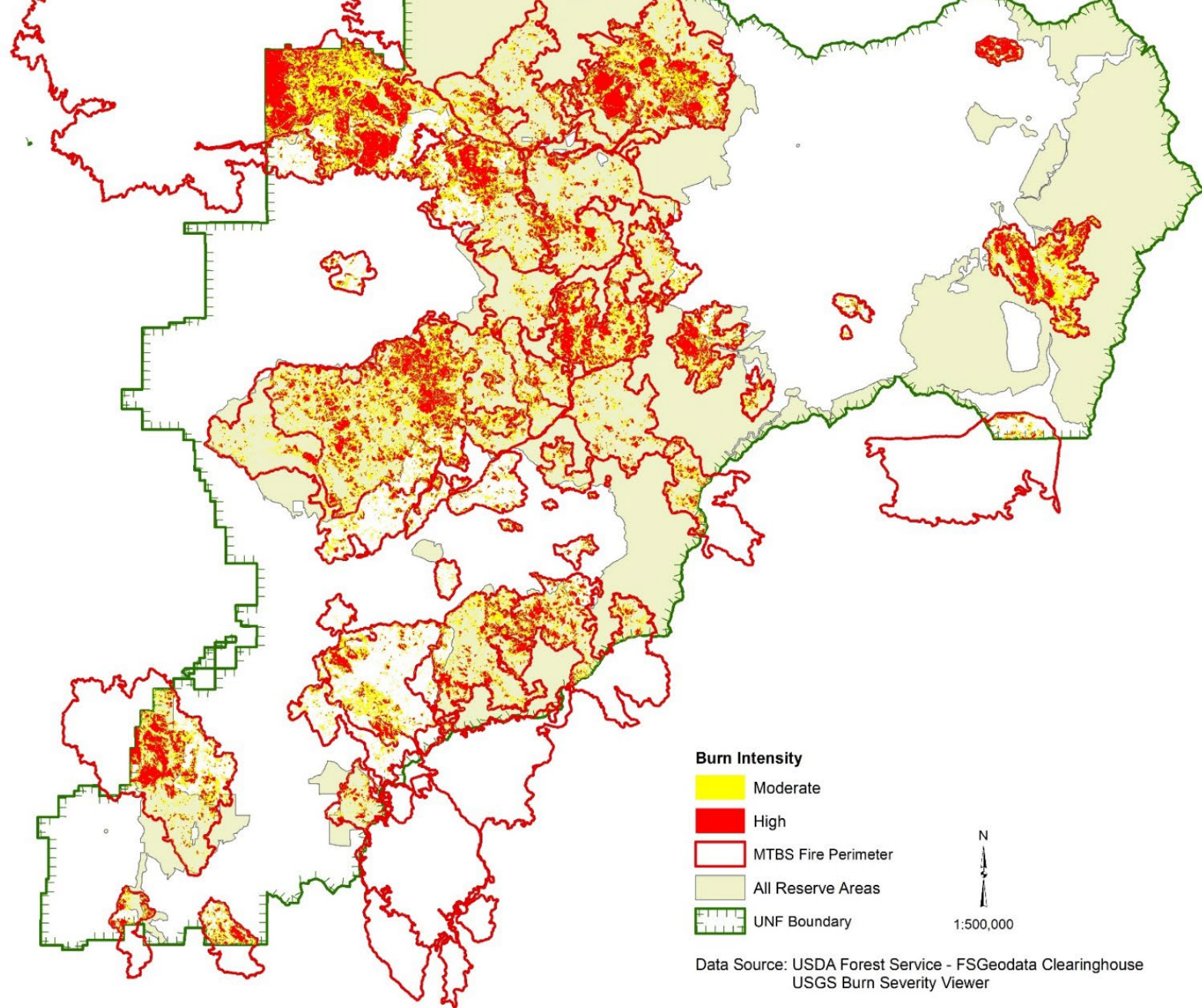
# Umpqua National Forest LSR/Roadless Areas and Fire Perimeters



Umpqua National Forest  
LSR/Roadless Areas,  
Fire Perimeters and  
Medium/High Burn Intensities



Umpqua National Forest  
All Reserve Areas,  
Fire Perimeters and  
Medium/High Burn Intensities

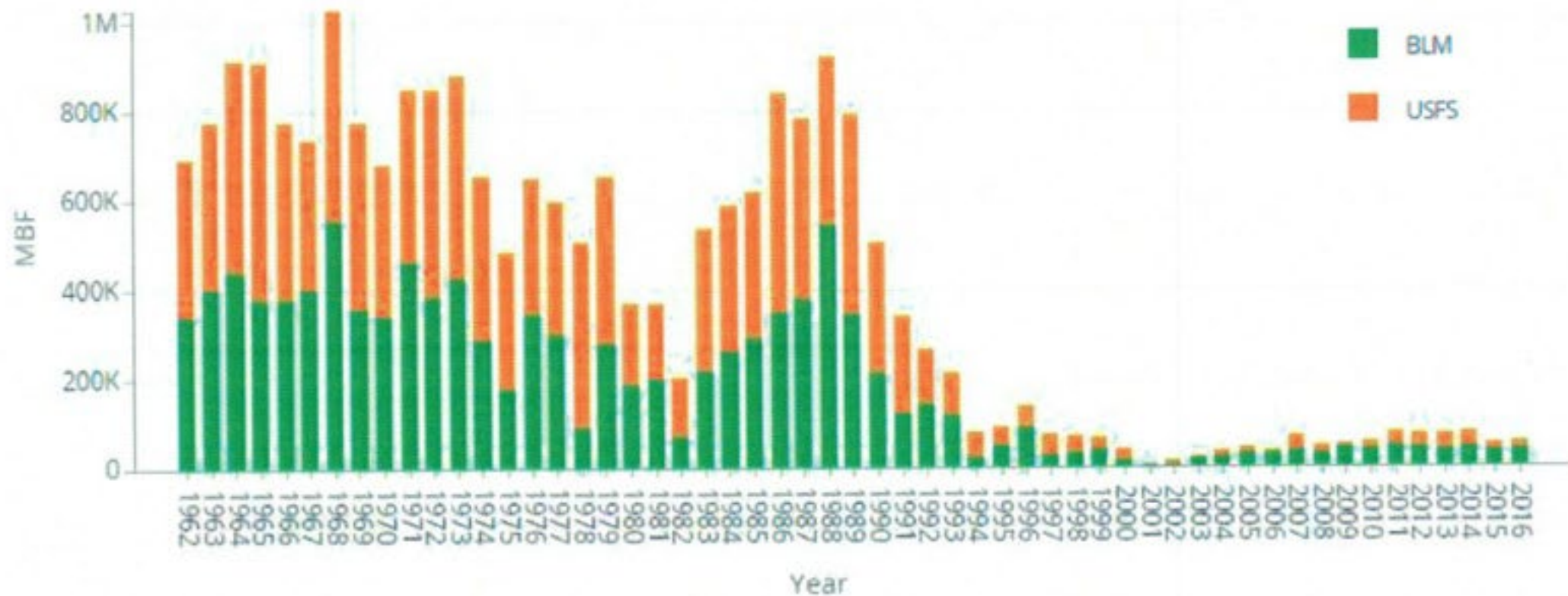




# Funding Past vs. Present

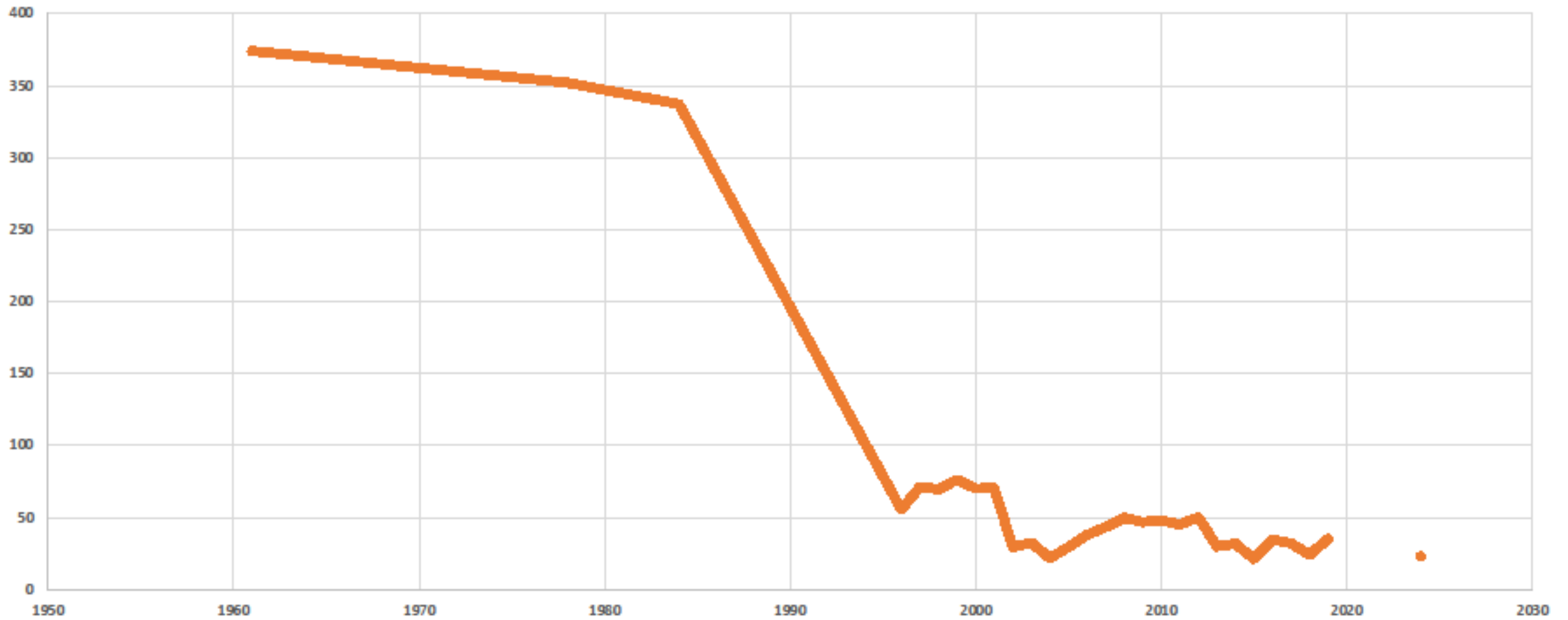
Timber Receipts were a critical source of County funds

Douglas County Federal Timber Harvest Data (1968-2016)





# UMPQUA NATIONAL FOREST Timber Sales



# Using an Indigenous approach in the NWFP Will:

- ▶ Restore important ecocultural conditions. The principle of Reciprocity is the basis of Ecocultural Restoration.
- ▶ Provide Tribal Hunting opportunities, Healthy Huckleberry patches and other Gathering Opportunities
- ▶ Create Climate Smart Forests
  - ▶ Resilient and Resistant to Catastrophic Wildfires
  - ▶ Increase Water Availability to our Streams, Rivers, Fish and Community.
- ▶ Enhance both regional timber supply and employment opportunities.

July  
17

Questions