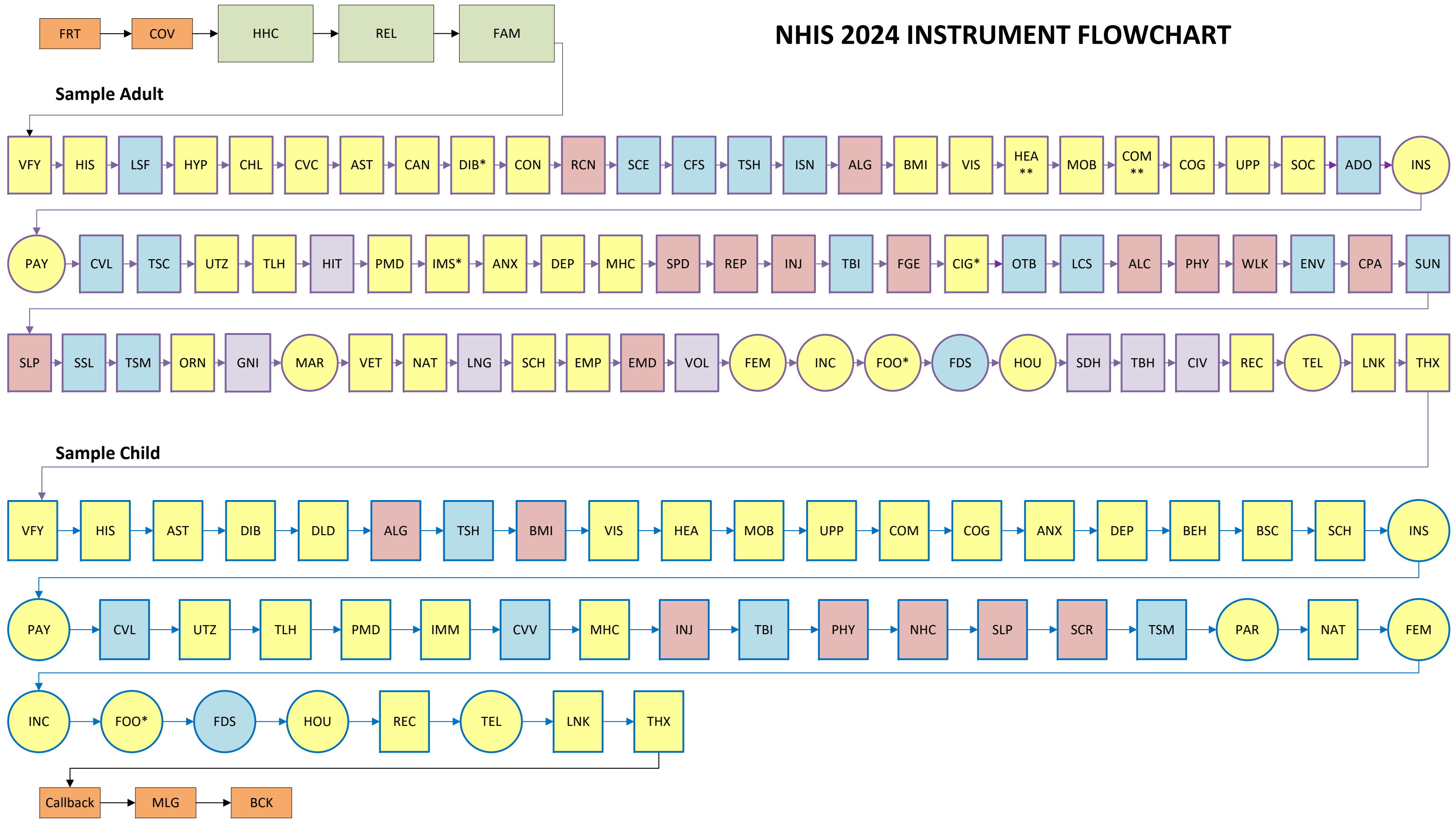


NHIS 2024 INSTRUMENT FLOWCHART



Annual Core
 Rotating Core
 Sponsored Content
 Emerging Content
 Front, Coverage, Callback, Mailing Address, Back
 Roster
 Family-level

*Section also includes sponsored questions **Section also includes rotating core questions ***Section also includes emerging content questions

Sample Adult Sections

| | |
|---------------|-------------------------------------|
| FRT | Front |
| COV | Coverage |
| MLG | Mailing Address |
| BCK | Back |
| | |
| Roster | |
| | |
| HHC | Household Composition |
| REL | Relationship of Children to Parents |
| FAM | Family Composition |

| | |
|-----|---|
| VFY | Sample Adult Verification |
| HIS | Health Status |
| LSF | Life Satisfaction |
| HYP | Hypertension |
| CHL | Cholesterol |
| CVC | Cardiovascular Conditions |
| AST | Asthma |
| CAN | Cancer |
| DIB | Diabetes |
| CON | Other Chronic Conditions |
| RCN | Rotating Conditions |
| SCE | Sponsored Conditions-Ever |
| CFS | Chronic Fatigue Section |
| TSH | Taste and Smell Health Conditions |
| ISN | Immunosuppression |
| ALG | Allergies |
| BMI | Current pregnancy, height, weight |
| VIS | Vision |
| HEA | Hearing |
| MOB | Mobility |
| COM | Communication |
| COG | Cognition |
| UPP | Self-care and Upper Body |
| SOC | Social Functioning |
| ADO | Age of Disability Onset |
| INS | Health Insurance |
| PAY | Difficulty Paying for Health Care |
| CVL | Long-COVID |
| TSC | Taste and Smell - COVID |
| UTZ | Utilization |
| TLH | Telehealth |
| HIT | Internet Access & Health Information Technology |
| PMD | Prescription Medication |
| IMS | Immunization |
| ANX | Anxiety |
| DEP | Depression |
| MHC | Mental Health Care |
| SPD | Serious Psychological Distress |
| REP | Repetitive Strain Injury |
| INJ | Injury |
| TBI | Concussions, past 12 months |
| FGE | Fatigue |
| CIG | Cigarettes and E-cigarettes |
| OTB | Other Tobacco |
| LCS | Lung Cancer Screening |
| ALC | Alcohol Use |
| PHY | Physical Activity |
| WLK | Walking |
| ENV | Perceptions of the Walking Environment |
| CPA | Content of Care – Physical Activity |
| SUN | Sun Care and Protection |
| SLP | Sleep |
| SSL | Social Support and Loneliness |
| TSM | Taste and Smell |
| ORN | Sexual Orientation |
| GNI | Gender Identity |
| MAR | Marital Status |
| VET | Veterans Status |
| NAT | Nativity |
| LNG | Language Spoken at Home |
| SCH | Schooling |
| EMP | Employment |
| EMD | Detailed Employment |
| VOL | Volunteer Activities |
| FEM | Employment of family members |
| INC | Family Income |
| FOO | Food Related Programs |
| FDS | Food Security |
| HOU | Housing |
| SDH | Housing Insecurity |
| TBH | Transportation Barrier to Care |
| CIV | Civic Engagement |
| REC | Person's name |
| TEL | Telephone Use |
| LNK | Linkage |
| THX | Thanks |

Sample Child Sections

| | |
|-----|---|
| VFY | Verification and demographic details |
| HIS | Health Status |
| AST | Asthma |
| DIB | Diabetes |
| DLD | Developmental and Learning Disabilities |
| ALG | Allergies |
| TSH | Taste and Smell Health Conditions |
| BMI | Height and Weight |
| VIS | Vision |
| HEA | Hearing |
| MOB | Mobility |
| UPP | Upper Body, Motor skills and self care |
| COM | Communication |
| COG | Cognition |
| ANX | Anxiety |
| DEP | Depression |
| BEH | Behavior |
| BSC | Baby Pediatric Symptom Checklist |
| SCH | Schooling |
| INS | Health Insurance |
| PAY | Difficulty Paying for Health Care |
| CVL | Long-COVID |
| UTZ | Utilization |
| TLH | Telehealth |
| PMD | Prescription medications |
| IMM | Immunization |
| CVV | COVID-19 vaccination |
| MHC | Mental health care |
| INJ | Injury |
| TBI | Concussions – past 12 months |
| PHY | Physical Activity |
| NHC | Neighborhood Characteristics |
| SLP | Sleep |
| SCR | Screen Time |
| TSM | Taste and Smell |
| PAR | Parent Demographics |
| NAT | Nativity |
| FEM | Employment of family members |
| INC | Family Income |
| FOO | Food Related Programs |
| FDS | Food Security |
| HOU | Housing |
| REC | Child's full name |
| TEL | Telephone ownership |
| LNK | Linkage |
| THX | Thanks |