

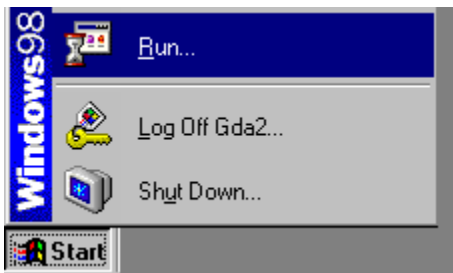
# Installing the MMDS Software Suite, Version 2003.03

To install this version of the MMDS software, you will need:

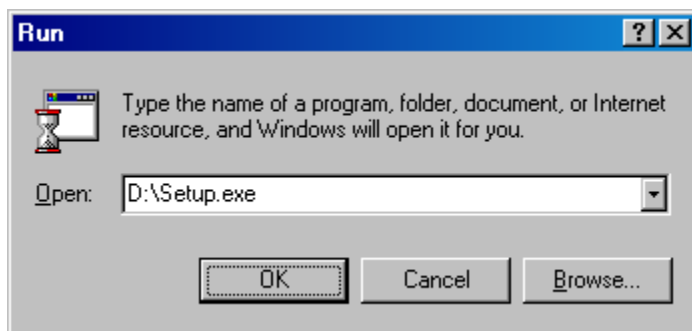
- The MMDS Version 2003.03 CD-ROM.
- To exit ALL other applications, INCLUDING any programs of the MMDS software suite.

**Steps for installing:**

1. Exit all applications and exit (or disable) any anti-virus software (such as Norton Anti-Virus) currently running on your system.
2. Insert the CD-ROM containing MMDS version 2003.03 into your CD-ROM drive. After a few moments, the setup routine should run automatically. If the autorun feature of Windows is disabled on your system, follow step 3 (below).
3. If the Setup routine does not automatically run after you insert the CD-ROM, click on your Windows Start Bar (generally found on the bottom left of your screen) and choose Run.

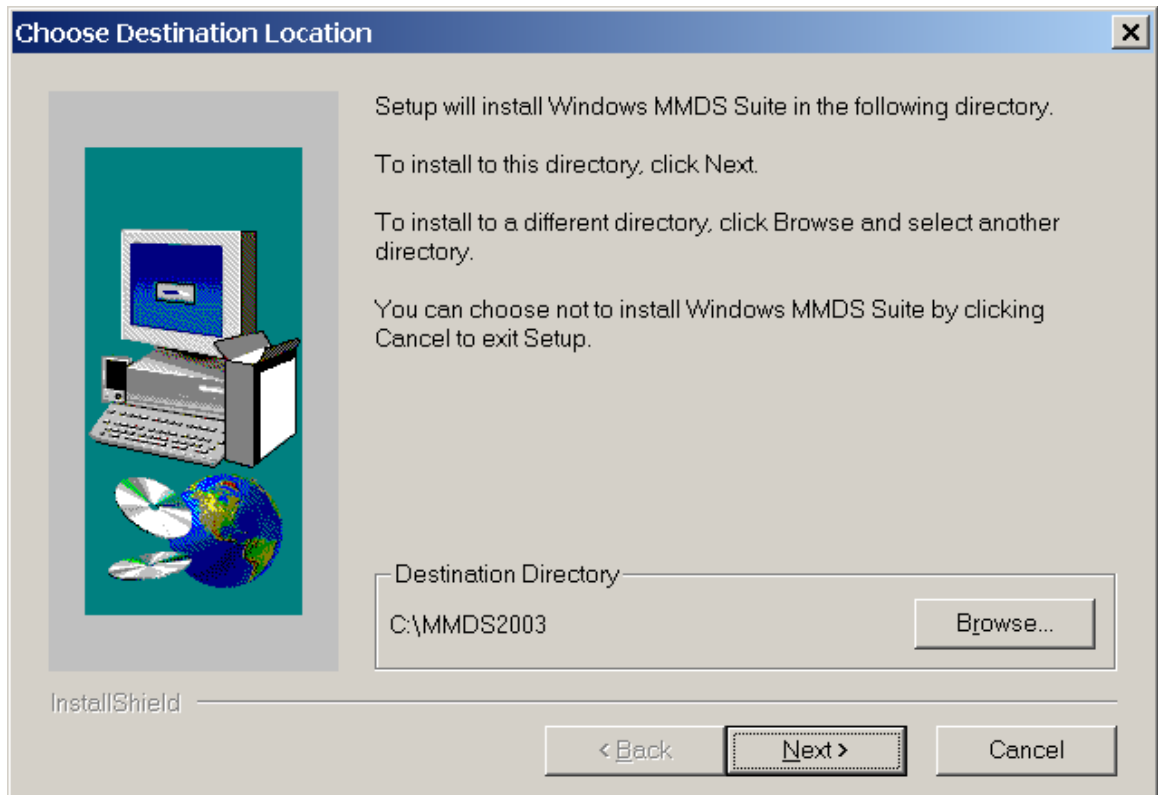


In the dialogue box type “D:\Setup” (where D is the letter of your CD-ROM drive) and press “OK”.

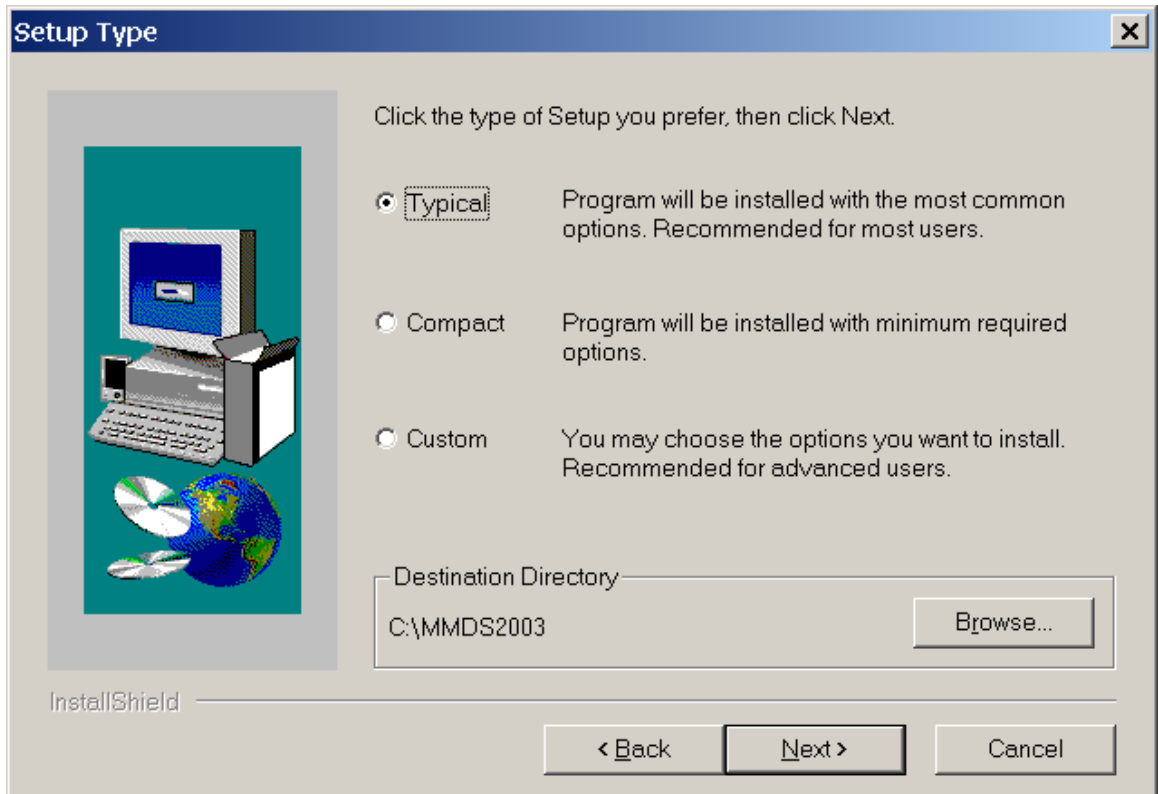


The setup routine will begin for installing version 2003.03.

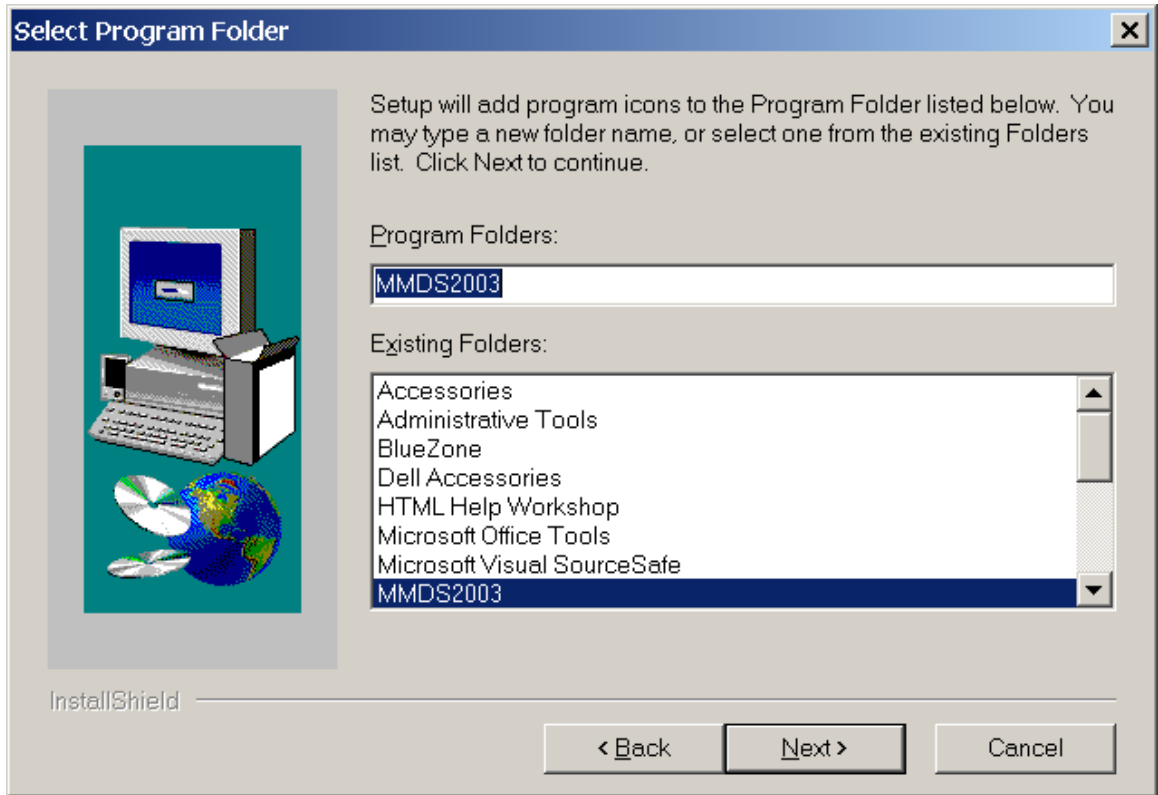
4. Setup will now ask you for the destination directory. "C:\MMDS2003" is the default directory. Generally, you should choose this default directory, but if you need to change the directory click the Browse button and choose an alternative directory. Then click Next to continue.



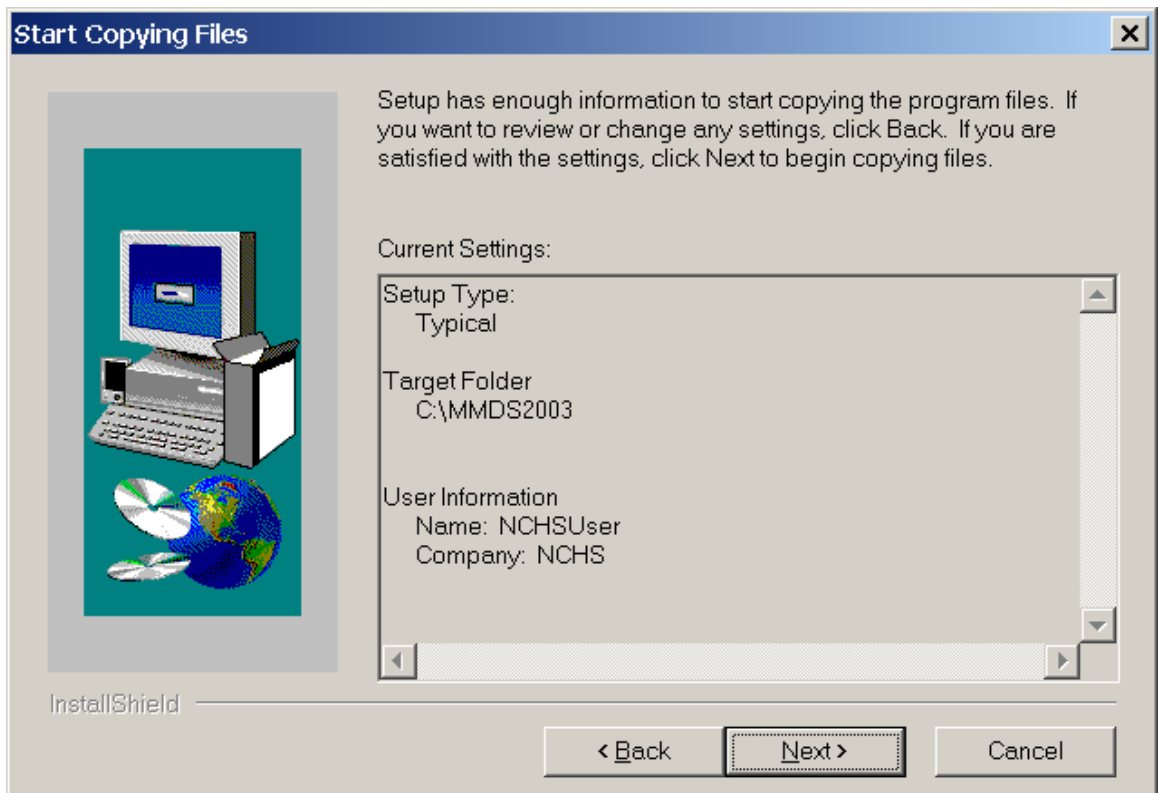
5. You must now choose the type of setup you need. Most users will choose a Typical setup, or you can customize your setup by choosing Compact or Custom. Press Next to continue.



- 6.
7. The next screen will allow you to specify a program folder for the MMDS software. Most users will keep the default ("MMDS2003"), but if you want a different program folder change the name here. Press Next to continue.



8. A confirmation screen will display your installation choices. Click Back to change any of your installation choices, or click Next to continue.



9. Setup will begin copying the necessary files to your computer. During the copying, progress gauges will show the progress of the installation.
10. Once the installation is completed, click “Finish” to complete the process.

Be sure and look at the version numbers on the programs when you next use them. The current version numbers should be 2003.03.