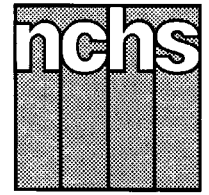


Monthly Vital Statistics Report



Provisional Data From the CENTERS FOR DISEASE CONTROL AND PREVENTION/National Center for Health Statistics

Births, Marriages, Divorces, and Deaths for October 1995

Births

According to provisional reports, an estimated 328,000 births occurred in the United States during October 1995. This was a 4-percent decrease from the provisional number of births reported for October 1994 (340,000). The birth rate, 14.7 live births per 1,000 population, was 4 percent lower than the rate of 15.3 for October 1994. The fertility rate, 64.9 live births per 1,000 women aged 15–44 years, was 4 percent lower than the comparable rate for October 1994 (67.3). The seasonally adjusted fertility rate (65.2) was also 4 percent lower than the comparable rate for October 1994 (67.6).

During the first 10 months of 1995, an estimated 3,287,000 births occurred, a

decline of 2 percent from the 3,352,000 reported for the first 10 months of 1994. The birth rate during this period declined by 3 percent from 15.5 in 1994 to 15.0 in 1995.

An estimated 3,914,000 live births occurred in the 12-month period ending with October 1995, a decline of 2 percent from the 3,991,000 births reported for the same period a year earlier. The birth rate of 14.9 was 3 percent lower than the rate of 15.3 for the preceding 12 months. The fertility rate for the most recent 12-month period was 65.9, 2 percent lower than the rate for the 12 months ending with October 1994 (67.3). These lower rates continue the generally downward trend observed since early 1991.

Natural increase

As a result of natural increase, the excess of births over deaths, an estimated 139,000 people, or 6.2 persons per 1,000 population, were added to the population during October 1995.

For the 12-month period ending with October 1995, 1,618,000 persons were added to the population. This represented a rate of natural increase of 6.2, 5 percent lower than the rate of 6.5 for the preceding 12-month period. The decline in the rate of natural increase was due to a larger decrease in the birth rate than the decrease in the death rate.

Provisional Vital Statistics for the United States

[Rates for infant deaths are deaths under 1 year per 1,000 live births; fertility rates are live births per 1,000 women aged 15–44 years; all other rates are per 1,000 total population. Data are subject to monthly reporting variation; see Technical notes]

Item	October				January–October				12 months ending with October				
	Number		Rate		Number		Rate		Number		Rate		
	1995	1994	1995	1994	1995	1994	1995	1994	1995	1994	1995	1994	1993
Live births	328,000	340,000	14.7	15.3	3,287,000	3,352,000	15.0	15.5	3,914,000	3,991,000	14.9	15.3	15.8
Fertility rate	64.9	67.3	66.4	67.9	65.9	67.3	68.7
Deaths	189,000	190,000	8.5	8.6	1,924,000	1,914,000	8.8	8.8	2,296,000	2,296,000	8.7	8.8	8.7
Infant deaths	2,500	2,600	7.4	7.7	24,600	26,400	7.5	7.9	29,600	31,800	7.6	8.0	8.3
Natural increase	139,000	150,000	6.2	6.7	1,363,000	1,438,000	6.2	6.7	1,618,000	1,695,000	6.2	6.5	7.1
Marriages	226,000	232,000	10.1	10.5	1,994,000	2,018,000	9.2	9.3	2,338,000	2,365,000	8.9	9.1	9.1
Divorces	98,000	99,000	4.4	4.5	982,000	990,000	4.5	4.6	1,183,000	1,180,000	4.5	4.5	4.7
Population base (in millions)	263.5	261.4	262.4	260.2	257.4

... Category not applicable.

NOTES: Figures include revisions received from the States. Twelve-month figures for the current year reflect revisions received for previous months, and figures for earlier years may differ from those previously published.



U.S. DEPARTMENT OF HEALTH AND HUMAN SERVICES
Public Health Service
Centers for Disease Control and Prevention
National Center for Health Statistics



Marriages

An estimated 226,000 marriages were performed in October 1995, 3 percent fewer than in October a year earlier (232,000). The marriage rate per 1,000 population for October was 4 percent lower in 1995 (10.1) than in 1994 (10.5).

The number and rate of marriages for the first 10 months of 1995 were 1 percent lower than the comparable figures for 1994. The number of marriages for the 10-month period dropped from 2,018,000 in 1994 to 1,994,000 in 1995, while the rate fell from 9.3 to 9.2.

There were 2,338,000 marriages performed during the 12-month period ending with October 1995, 1 percent fewer than for the same period a year earlier (2,365,000). The marriage rate for the current period (8.9) was 2 percent lower than the rate for the period ending with October 1994 (9.1).

Divorces

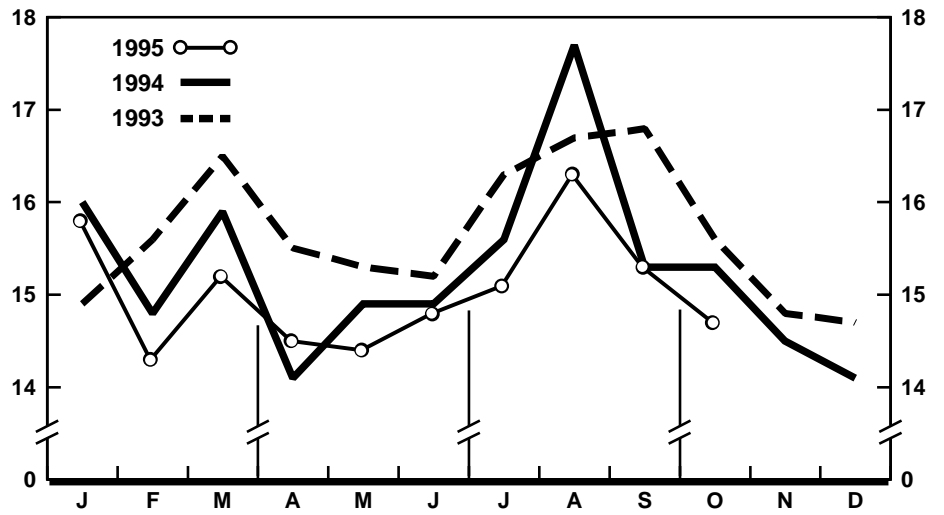
Approximately 98,000 couples divorced in October 1995 compared with 99,000 in October 1994—a 1-percent decline. The divorce rate per 1,000 population for October was 2 percent lower in 1995 (4.4) than in 1994 (4.5).

The estimated number of divorces granted during January–October 1995 was 982,000, 1 percent fewer than for the same period in 1994 (990,000). The divorce rate for the 10-month period was 4.5 in 1995, 2 percent lower than in 1994 (4.6).

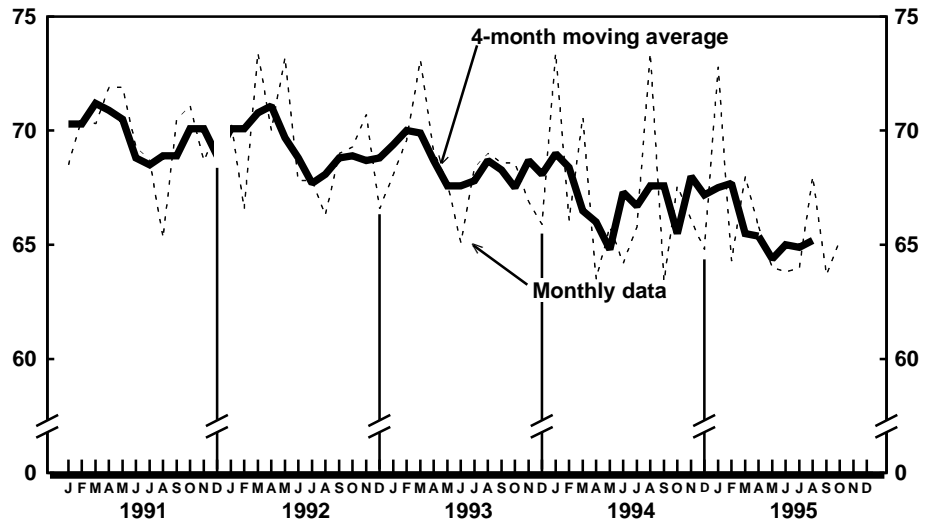
For the 12-month period ending with October 1995, the number and rate of divorces were virtually unchanged from the same period a year earlier. The number of divorces was slightly higher for the current period (1,183,000) than for the period ending with October 1994 (1,180,000), while the divorce rate remained steady at 4.5.

Deaths

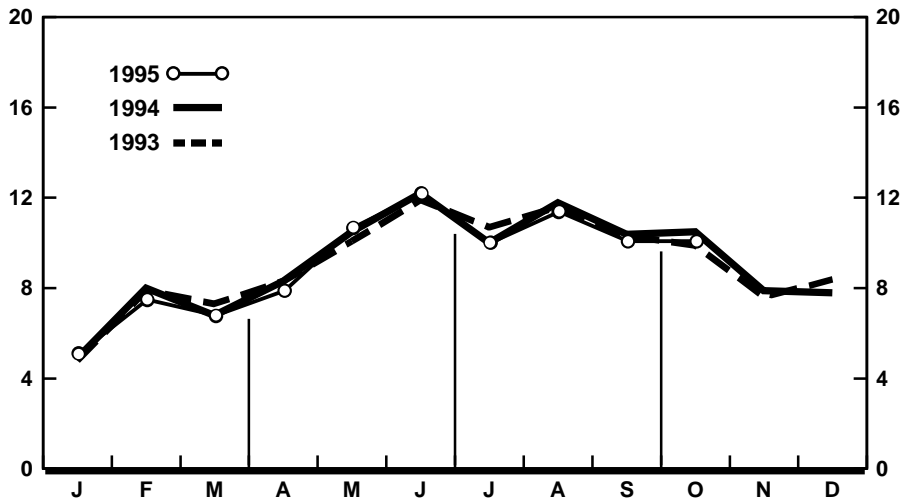
For October 1995 there were an estimated 189,000 deaths in the United States. The death rate was 8.5 deaths per 1,000 population, 1 percent lower than the rate of 8.6 for October a year earlier. Among the 189,000 deaths for October 1995 were 2,500 deaths at ages under 1 year.



Provisional birth rates per 1,000 population by month: United States, 1993-95



Provisional seasonally adjusted fertility rates per 1,000 women aged 15-44 years: United States, 1991-95



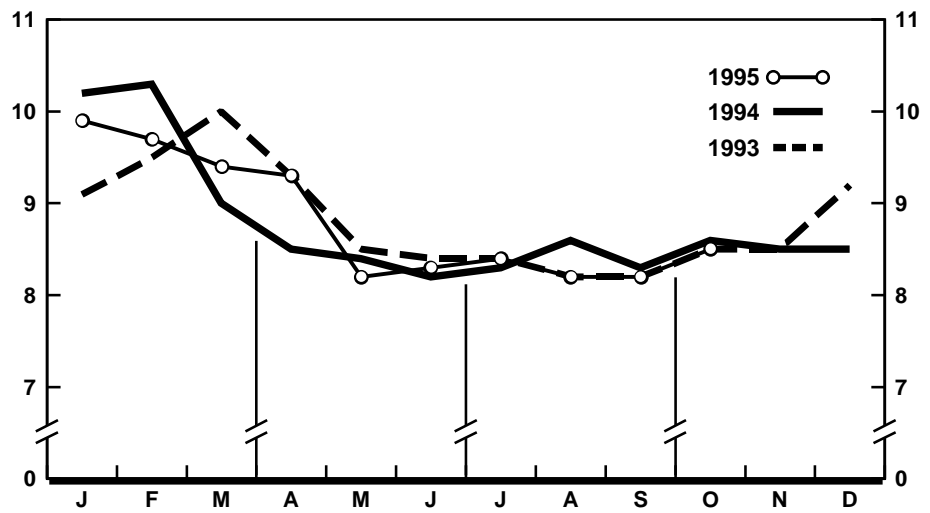
Provisional marriage rates per 1,000 population by month: United States, 1993-95

According to provisional statistics, 1,924,000 deaths occurred during the first 10 months of 1995, 1 percent higher than the number estimated for January–October 1994 (1,914,000). The death rate, 8.8 per 1,000 population, was the same as the rate for January–October 1994. Among the 1,924,000 deaths for January–October 1995 were 24,600 deaths at ages under 1 year, yielding an infant mortality rate of 7.5 per 1,000 live births. This rate was 5 percent lower than the rate of 7.9 for the first 10 months of 1994.

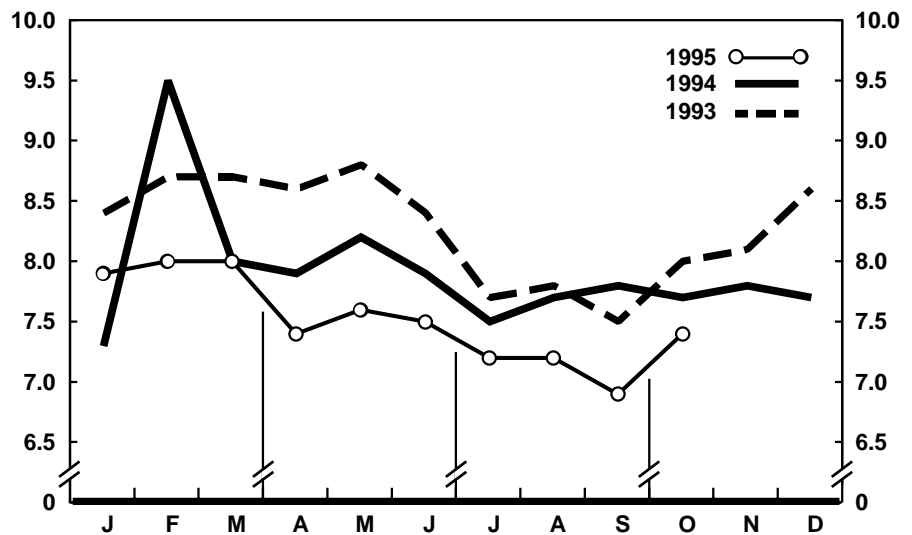
The death rate for the 12 months ending with October 1995 was 8.7 deaths per 1,000 population, 1 percent lower than the rate of 8.8 for the comparable 12-month period a year earlier. The infant mortality rate for this 12-month period was 7.6 per 1,000 live births, 5 percent lower than the rate of 8.0 for the 12 months ending with October 1994.

Current Mortality Sample, 12 months ending with September 1995—The provisional death rate for the 12 months ending with September 1995 was 876.0 per 100,000 population, 1 percent lower than the rate of 882.1 for the 12-month period ending September 1994. The provisional age-adjusted death rate for the 12-month period ending with September 1995 was 504.2 per 100,000 U.S. standard million population, 1 percent lower than the rate of 511.6 for the 12-month period ending with September 1994. Age-adjusted death rates control for changes and variations in the age composition of the population; therefore, they are better indicators than crude rates for showing changes in mortality risk over time and for showing differences between race-sex groups within the population. Among the race-sex groups, the estimated age-adjusted death rates decreased for white males and black males. By age the death rate for the total population decreased for the age groups: 55–64 years, 65–74 years, and 85 years and over.

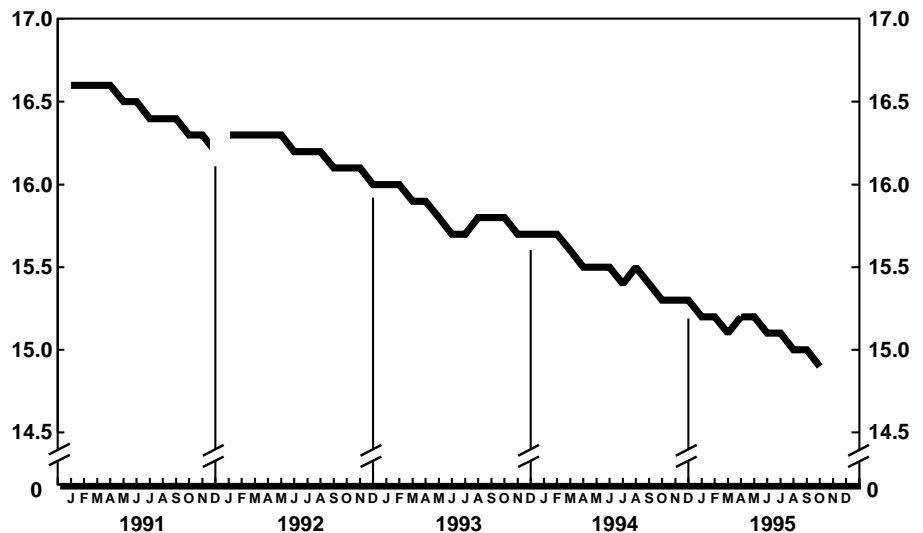
Among the major causes of death, the estimated death rate decreased between the two successive 12-month periods for Diseases of heart, Pneumonia and influenza, and Homicide and legal intervention. The death rate increased between the two successive 12-month periods for Diabetes mellitus; Human immunodeficiency virus infection; and Nephritis, nephrotic syndrome, and nephrosis.



Provisional death rates per 1,000 population by month: United States, 1993–95



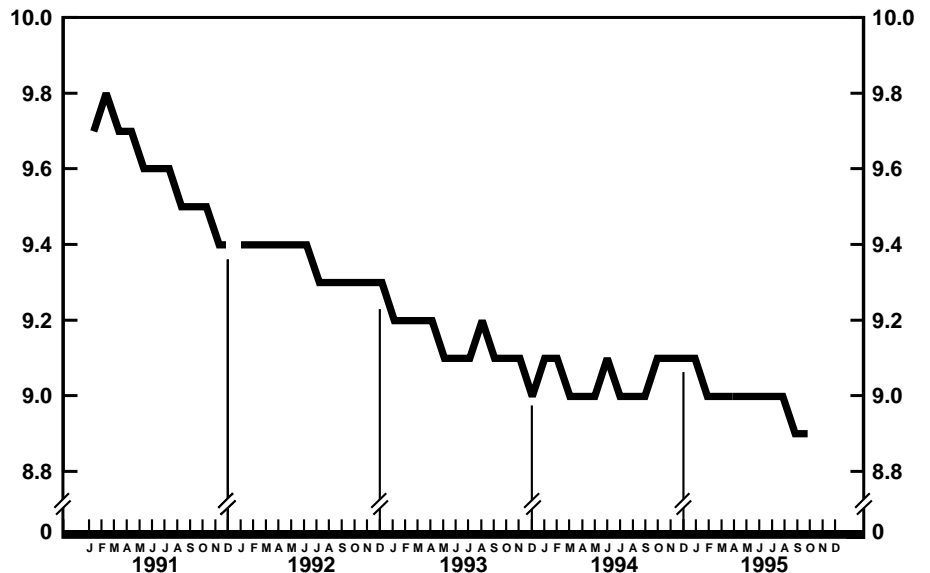
Provisional infant mortality rates per 1,000 live births by month: United States, 1993–95



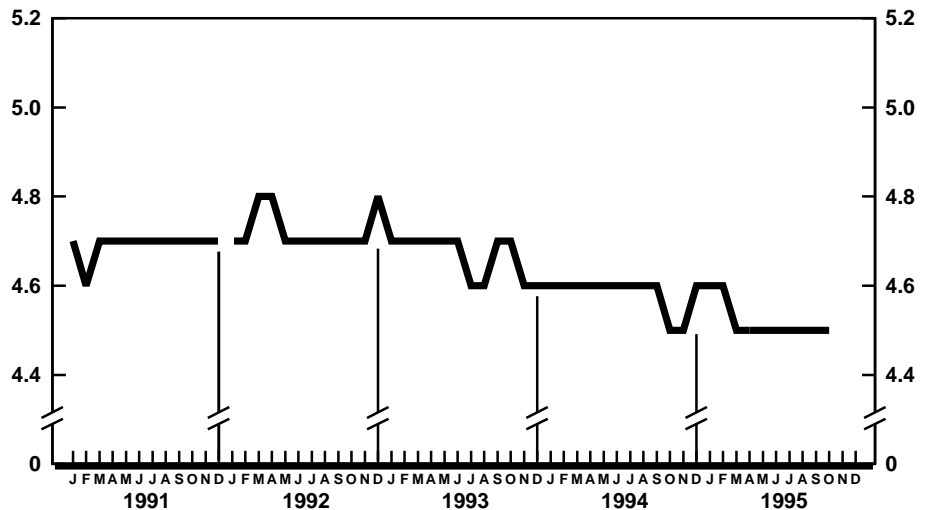
Provisional birth rates per 1,000 population for successive 12-month periods ending with month indicated: United States, 1991–95

The death rate for Injury by firearms for the 12 months ending with September 1995 was 13.8 per 100,000 population, 7 percent lower than the rate of 14.8 for the comparable 12-month period a year earlier.

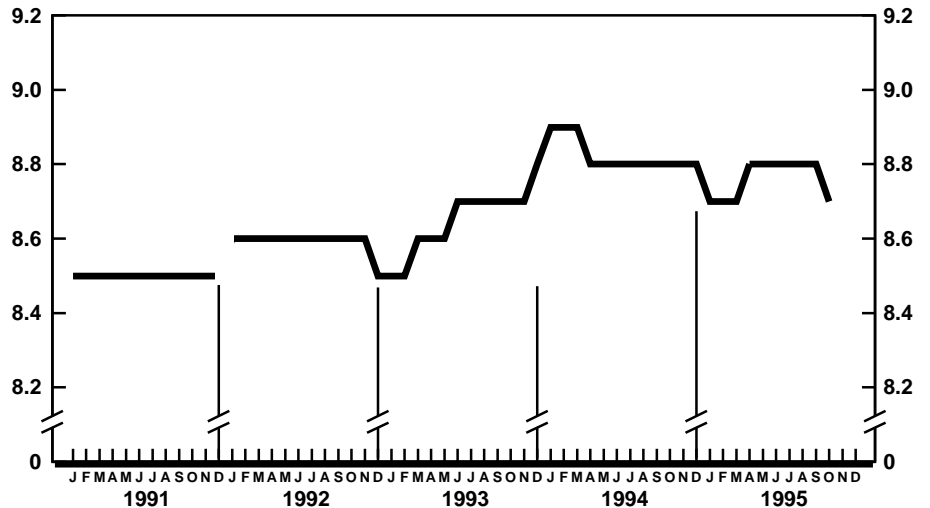
The infant mortality rate for the 12 months ending with September 1995 was 760.4 per 100,000 live births, 5 percent lower than the rate of 804.4 for the same 12-month period a year earlier. For infants under 28 days, the 12-month rate ending September 1995 was 483.9 compared with a rate of 512.0 for the 12-month period a year earlier. The infant mortality rate for infants aged 28 days–11 months was 275.5 compared with a rate of 292.2 for the 12-month period a year earlier. The changes in the mortality rates for infants under 28 days of age and for those aged 28 days–11 months were not statistically significant. Among causes of infant death, the infant mortality rate decreased between the two successive 12-month periods for Respiratory distress syndrome.



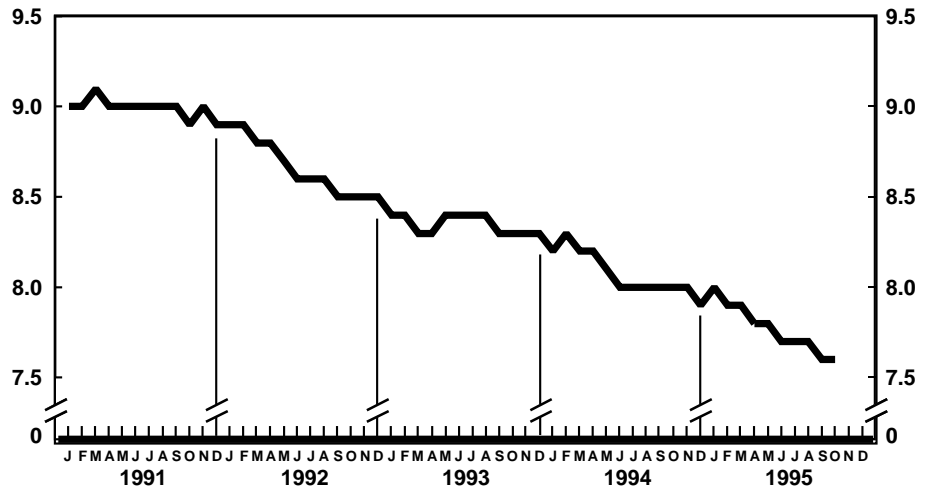
Provisional marriage rates per 1,000 population for successive 12-month periods ending with month indicated: United States, 1991–95



Provisional divorce rates per 1,000 population for successive 12-month periods ending with month indicated: United States, 1991–95



Provisional death rates per 1,000 population for successive 12-month periods ending with month indicated: United States, 1991–95



Provisional infant mortality rates per 1,000 live births for successive 12-month periods ending with month indicated: United States, 1991-95

Table 1. Provisional number of live births, marriages, divorces, deaths, and infant deaths and rates, by month: United States, January 1994–October 1995

[Data are provisional and are subject to monthly reporting variation; see Technical notes]

Period	Live births				Marriages		Divorces		Deaths		Infant deaths	
	Number	Rate per 1,000 women aged 15–44 years			Number	Rate per 1,000 population	Number	Rate per 1,000 population	Number	Rate per 1,000 population	Number	Rate per 1,000 live births
		Rate per 1,000 population	Unadjusted	Seasonally adjusted ¹								
1994:												
January	352,000	16.0	69.9	73.4	107,000	4.9	97,000	4.4	224,000	10.2	2,500	7.3
February	294,000	14.8	64.8	66.1	156,000	8.0	88,000	4.4	204,000	10.3	2,900	9.5
March	350,000	15.9	69.6	70.6	147,000	6.8	103,000	4.7	199,000	9.0	2,700	8.0
April	302,000	14.1	62.0	63.5	175,000	8.3	100,000	4.7	182,000	8.5	2,500	7.9
May	329,000	14.9	65.3	65.8	232,000	10.5	104,000	4.7	186,000	8.4	2,700	8.2
June	319,000	14.9	65.5	64.2	262,000	12.2	103,000	4.8	176,000	8.2	2,500	7.9
July	346,000	15.6	68.6	65.8	222,000	10.0	98,000	4.4	184,000	8.3	2,600	7.5
August	392,000	17.7	77.7	73.4	262,000	11.8	99,000	4.5	190,000	8.6	2,800	7.7
September	329,000	15.3	67.4	63.4	224,000	10.4	99,000	4.6	178,000	8.3	2,500	7.8
October	340,000	15.3	67.3	67.6	232,000	10.5	99,000	4.5	190,000	8.6	2,600	7.7
November	313,000	14.5	64.1	66.1	171,000	7.9	98,000	4.5	182,000	8.5	2,500	7.8
December	314,000	14.1	62.3	64.8	173,000	7.8	103,000	4.7	190,000	8.5	2,500	7.7
1995:												
January	350,000	15.8	69.4	72.8	111,000	5.1	96,000	4.3	220,000	9.9	2,700	7.9
February	287,000	14.3	63.1	64.3	146,000	7.5	89,000	4.4	194,000	9.7	2,400	8.0
March	338,000	15.2	67.1	68.0	148,000	6.8	98,000	4.4	208,000	9.4	2,700	8.0
April	313,000	14.5	64.1	65.8	165,000	7.9	98,000	4.6	200,000	9.3	2,400	7.4
May	321,000	14.4	63.5	64.0	238,000	10.7	103,000	4.6	184,000	8.2	2,500	7.6
June	318,000	14.8	65.2	63.8	263,000	12.2	104,000	4.8	180,000	8.3	2,400	7.5
July	337,000	15.1	66.6	64.0	224,000	10.0	97,000	4.4	188,000	8.4	2,400	7.2
August	364,000	16.3	72.1	68.0	254,000	11.4	99,000	4.4	184,000	8.2	2,500	7.2
September	331,000	15.3	67.6	63.7	219,000	10.1	99,000	4.6	178,000	8.2	2,300	6.9
October	328,000	14.7	64.9	65.2	226,000	10.1	98,000	4.4	189,000	8.5	2,500	7.4

¹The method of seasonal adjustment, developed by the U.S. Bureau of the Census, is described in *The X-11 Variant of the Census Method II Seasonal Adjustment Program*, Technical Paper No. 15 (1967 revision).

NOTE: Figures include all revisions received from the States and, therefore, may differ from those previously published.

Table 2. Provisional number of live births and deaths: Each division and State, October 1994 and 1995, and cumulative figures, 1993–95

[Data are estimates by State of residence; see Technical notes]

Area	Live births					Deaths				
	October		January–October			October		January–October		
	1995	1994	1995	1994	1993	1995	1994	1995	1994	1993
New England	12,329	15,776	147,234	148,186	154,252	9,914	11,308	99,548	98,637	100,067
Maine	1,122	1,394	11,888	12,167	11,968	1,105	582	10,040	9,807	9,398
New Hampshire	1,486	1,795	12,720	12,424	12,723	539	854	7,462	7,430	7,435
Vermont	540	438	5,681	5,764	6,366	281	305	4,133	3,781	4,091
Massachusetts	3,941	8,265	66,522	71,669	73,170	4,797	6,356	46,306	46,242	47,302
Rhode Island	1,213	1,084	10,715	11,227	12,003	797	797	7,938	7,699	8,102
Connecticut	4,027	2,800	39,708	34,935	38,022	2,395	2,414	23,669	23,678	23,739
Middle Atlantic	47,011	47,964	442,719	461,061	470,457	30,916	32,780	309,847	308,644	308,504
New York	26,314	25,100	223,902	232,645	235,650	15,300	15,781	141,835	141,565	143,524
New Jersey	6,973	8,801	89,678	95,043	100,004	5,639	6,135	62,120	59,952	60,247
Pennsylvania	13,724	14,063	129,139	133,373	134,803	9,977	10,864	105,892	107,127	104,733
East North Central	58,336	52,870	526,338	539,612	547,035	32,917	31,797	327,552	328,501	320,916
Ohio	14,731	13,452	130,207	135,720	134,061	8,362	7,771	87,341	87,798	84,203
Indiana	9,563	7,434	69,229	69,062	71,662	4,934	4,872	43,380	44,838	42,900
Illinois	15,911	15,813	156,459	158,118	159,165	8,701	8,958	89,918	89,175	88,902
Michigan	12,461	10,856	113,629	118,571	123,688	7,058	6,544	69,550	69,268	68,372
Wisconsin	5,670	5,315	56,814	58,141	58,459	3,862	3,652	37,363	37,422	36,539
West North Central	23,416	23,016	214,530	212,968	218,701	13,706	14,382	143,400	141,834	143,422
Minnesota	5,282	5,338	53,035	54,468	54,105	3,113	3,085	30,719	30,245	30,183
Iowa	2,986	3,299	28,984	30,293	30,679	1,079	2,126	20,857	21,896	23,746
Missouri	7,942	8,234	63,866	64,661	65,963	5,248	5,096	49,005	47,191	47,085
North Dakota	702	726	7,307	7,222	7,374	462	524	4,965	4,935	4,845
South Dakota	753	794	9,126	8,854	9,195	520	548	5,659	5,644	5,681
Nebraska	1,938	1,649	19,567	19,013	19,036	1,331	1,215	12,513	12,202	12,437
Kansas	3,813	2,976	32,645	28,457	32,349	1,953	1,788	19,682	19,721	19,445
South Atlantic	53,774	55,687	549,138	552,561	563,356	34,400	34,943	363,022	359,012	350,241
Delaware	863	992	8,434	8,665	8,821	523	464	5,107	5,133	5,059
Maryland	5,787	5,745	61,367	58,446	63,502	3,223	3,151	33,824	32,582	34,796
District of Columbia	762	764	7,534	8,248	8,301	576	600	5,292	5,944	5,698
Virginia	6,170	8,354	74,905	79,373	80,698	4,176	4,543	43,744	45,029	43,082
West Virginia	1,447	1,699	17,972	18,485	18,574	1,592	1,550	16,570	16,950	16,649
North Carolina	8,998	8,000	86,793	85,928	83,769	5,320	5,335	53,946	54,107	52,190
South Carolina	4,085	3,459	41,789	43,139	46,716	2,489	3,019	26,876	26,620	26,559
Georgia	9,676	8,873	96,512	91,152	94,144	4,592	4,375	48,588	47,749	46,579
Florida	15,986	17,801	153,832	159,125	158,831	11,909	11,906	129,075	124,898	119,629
East South Central	20,794	19,003	188,483	192,473	195,613	13,527	12,716	132,854	130,430	129,181
Kentucky	4,611	4,626	43,501	43,922	43,726	3,112	2,998	32,325	31,549	30,824
Tennessee	6,872	5,654	60,837	62,661	63,339	4,543	3,891	42,688	40,640	41,076
Alabama	5,828	5,552	52,095	51,144	53,599	3,607	3,607	35,363	35,831	35,192
Mississippi	3,483	3,171	32,050	34,746	34,949	2,247	2,220	22,478	22,410	22,089
West South Central	39,080	41,469	402,245	396,373	406,511	18,934	18,510	197,715	200,628	196,908
Arkansas	2,828	2,955	28,117	28,952	28,871	2,293	2,415	21,133	22,550	22,139
Louisiana	6,533	5,600	57,229	56,873	58,232	3,396	3,243	33,213	34,578	34,403
Oklahoma	4,723	3,491	39,508	38,306	38,802	2,660	2,568	27,218	27,065	26,870
Texas ¹	24,996	29,423	277,391	272,242	280,606	10,585	10,284	116,151	116,435	113,496
Mountain	20,151	19,585	205,558	205,987	208,626	9,830	8,301	95,149	94,443	90,711
Montana	920	894	9,408	9,230	9,702	683	619	6,350	6,173	6,272
Idaho	1,611	1,446	14,799	14,668	14,309	763	712	7,043	7,073	6,873
Wyoming	592	541	5,359	5,396	5,463	310	288	3,081	2,910	2,923
Colorado	4,237	4,371	42,489	45,688	46,350	2,201	2,026	20,825	20,219	19,397
New Mexico	2,317	2,781	22,864	23,544	22,688	938	1,100	10,274	10,193	9,705
Arizona	5,182	4,895	59,852	56,192	59,360	3,047	2,043	28,551	29,261	28,323
Utah	3,726	3,024	33,105	32,441	31,313	857	826	8,885	8,746	8,373
Nevada	1,566	1,633	17,682	18,828	19,441	1,031	687	10,140	9,868	8,845
Pacific	59,989	71,404	593,905	625,959	613,084	25,346	25,988	255,015	252,752	245,916
Washington	6,442	7,807	66,332	67,168	59,140	3,260	2,612	33,070	31,899	34,585
Oregon	3,642	3,186	37,017	35,614	36,975	2,230	2,477	23,551	23,339	22,813
California ¹	47,560	57,788	466,424	496,385	491,945	19,066	20,068	190,056	189,416	180,583
Alaska	779	875	8,796	10,590	8,738	187	194	2,032	2,008	1,891
Hawaii	1,566	1,748	15,336	16,202	16,286	603	637	6,306	6,090	6,044
Puerto Rico ²	5,746	---	51,491	---	---	---	---	---	---	---

--- Data not available.

¹Figures include adjustments for varying lengths of reporting periods; see Technical notes.

²Data for Puerto Rico are not included in U.S. total figures.

NOTES: Figures include all revisions received from the States. Cumulative figures for the current year reflect revisions received for previous months, and figures for earlier years may differ from those previously published.

Table 3. Provisional number of marriages and divorces: Each division and State, October 1994 and 1995, and cumulative figures, 1993–95

[By State of occurrence. Number of events reported; see Technical notes. Divorces include reported annulments]

Area	Marriages					Divorces				
	October		January–October			October		January–October		
	1995	1994	1995	1994	1993	1995	1994	1995	1994	1993
New England	12,502	13,206	84,353	91,639	75,847	3,127	3,140	33,359	32,211	35,845
Maine	1,251	1,167	9,691	9,356	9,349	397	400	4,355	4,386	4,631
New Hampshire	1,363	1,369	7,995	8,718	6,276	495	459	4,126	4,189	4,132
Vermont	752	669	5,041	4,778	5,111	264	52	2,396	2,035	2,335
Massachusetts	5,364	5,922	36,004	43,402	28,650	843	1,157	11,241	11,143	13,328
Rhode Island	883	965	6,415	6,117	6,279	265	247	3,090	2,687	2,893
Connecticut	2,889	3,114	19,207	19,268	20,182	863	825	8,151	7,771	8,526
Middle Atlantic	31,453	36,333	227,341	235,075	237,141	10,832	10,894	100,896	100,020	101,083
New York ¹	16,520	20,700	119,015	125,635	125,003	5,556	5,432	47,341	46,871	47,373
New Jersey	6,804	6,704	45,172	45,014	45,676	2,109	2,046	20,603	20,167	20,828
Pennsylvania	8,129	8,929	63,154	64,426	66,462	3,167	3,416	32,952	32,982	32,882
East North Central	37,407	39,165	285,731	293,624	289,829	² 12,809	² 12,116	² 121,268	² 123,506	² 125,998
Ohio	9,276	11,998	77,568	77,995	75,182	3,658	4,561	40,539	41,418	42,189
Indiana	5,370	5,440	43,050	43,033	43,066	---	---	---	---	---
Illinois	9,667	9,398	70,442	78,765	77,202	3,636	3,183	32,369	34,889	36,334
Michigan	8,581	8,048	62,220	61,472	61,381	3,882	2,763	33,667	32,674	32,798
Wisconsin	4,513	4,281	32,451	32,359	32,998	1,633	1,609	14,693	14,525	14,677
West North Central	14,968	13,800	127,503	127,069	128,013	5,856	8,224	62,635	65,045	65,474
Minnesota	3,669	3,329	29,441	28,840	28,505	1,309	1,387	13,008	13,379	14,019
Iowa	2,583	2,306	19,400	19,604	21,824	1,004	892	8,822	9,344	9,024
Missouri	3,951	3,775	38,342	37,964	37,801	1,686	2,287	21,964	22,541	22,631
North Dakota	401	395	4,046	4,258	4,328	211	185	1,861	1,838	1,856
South Dakota	630	610	6,485	6,652	6,584	264	256	2,402	2,455	2,389
Nebraska	1,012	849	10,706	10,852	10,884	491	485	5,193	5,457	5,254
Kansas	2,722	2,536	19,083	18,899	18,087	891	2,732	9,385	10,031	10,301
South Atlantic	38,972	38,086	376,074	372,379	369,879	17,862	18,493	189,422	193,328	195,030
Delaware	546	501	4,578	4,251	4,317	289	393	3,111	2,948	2,619
Maryland	4,144	4,984	36,503	36,619	36,188	772	1,195	12,331	14,182	14,033
District of Columbia	312	160	1,804	2,209	2,209	225	153	1,329	1,881	1,538
Virginia	6,708	6,415	58,199	58,894	58,401	2,429	2,393	23,465	24,542	24,441
West Virginia	1,277	891	9,689	8,921	11,327	841	862	7,531	7,555	7,972
North Carolina	5,521	5,388	52,823	42,518	40,328	3,117	2,735	31,593	30,753	29,198
South Carolina	3,413	3,976	38,171	43,952	44,825	1,365	1,360	12,474	12,754	12,902
Georgia	6,038	5,361	52,990	53,287	52,582	3,309	2,703	31,318	30,839	31,751
Florida	11,013	10,410	121,317	121,728	119,702	5,515	6,699	66,270	67,874	70,576
East South Central	15,706	15,257	163,101	158,688	154,702	8,832	8,099	81,107	82,566	80,271
Kentucky	4,521	3,878	39,995	39,968	38,596	2,170	1,799	19,278	19,006	18,338
Tennessee	5,141	6,149	70,462	65,710	62,523	2,835	3,089	28,593	28,239	27,812
Alabama	4,620	3,456	35,127	34,275	33,964	2,586	2,395	22,152	22,552	22,859
Mississippi	1,424	1,774	17,517	18,735	19,619	1,241	816	11,084	12,769	11,262
West South Central	16,488	20,461	251,420	251,933	243,456	² 11,283	² 11,271	² 115,350	² 117,957	² 118,805
Arkansas	2,522	2,763	29,959	31,981	31,204	1,352	1,219	13,230	14,748	14,656
Louisiana	2,489	3,053	33,431	34,795	29,361	---	---	---	---	---
Oklahoma	2,056	2,097	24,068	24,868	25,660	2,003	1,934	18,438	18,220	19,110
Texas ³	9,421	12,548	163,962	160,289	157,231	7,928	8,118	83,682	84,989	85,039
Mountain	23,783	21,422	233,713	230,590	216,784	² 6,580	² 7,251	² 63,167	² 74,029	² 64,164
Montana	445	496	5,939	6,135	6,192	353	350	3,469	3,424	3,635
Idaho	1,465	1,732	13,466	13,478	11,945	613	553	5,670	5,897	5,794
Wyoming	264	218	4,267	4,073	3,914	290	244	2,671	2,498	2,497
Colorado	4,350	2,618	31,611	30,176	29,636	---	---	---	---	---
New Mexico ^{4,5}	1,211	849	12,819	10,640	10,755	1,080	825	9,908	8,330	8,394
Arizona ¹	3,086	2,528	32,451	30,380	33,142	2,455	2,023	23,123	19,403	20,694
Utah	1,494	1,876	18,736	17,895	17,859	755	696	7,509	7,651	7,212
Nevada	11,468	11,105	114,424	117,813	103,341	1,034	1,121	10,817	10,898	---
Pacific	31,255	30,837	242,380	252,878	250,447	² 4,329	² 3,841	² 43,607	² 45,038	² 42,466
Washington	3,187	3,854	37,133	36,577	34,363	2,500	1,902	24,164	24,723	22,305
Oregon	1,767	2,000	22,640	21,761	20,822	1,420	1,250	12,670	13,594	13,470
California	24,371	23,090	162,196	174,671	175,913	---	---	---	---	---
Alaska	349	379	4,687	4,730	4,673	61	258	2,352	2,717	2,547
Hawaii	1,581	1,514	15,724	15,139	14,676	348	431	4,421	4,004	4,144
Puerto Rico ⁶	---	---	---	---	---	---	---	---	---	---

--- Data not available.

¹Figures for marriages are marriage licenses issued for some counties.

²Excludes figures for State(s) shown below as not available.

³Figures include adjustments for varying lengths of reporting periods; see Technical notes.

⁴Figures for marriages are marriage licenses issued.

⁵Figures for divorces include estimates for some counties.

⁶Data for Puerto Rico are not included in U.S. total figures.

NOTES: Figures include all revisions received from the States. Cumulative figures for the current year reflect revisions received for previous months, and figures for earlier years may differ from those previously published.

Table 4. Provisional number of deaths under 1 year and infant mortality rates: Each division and State, 12 months ending with October 1994 and 1995

[Data are estimates by State of residence; see Technical notes. Infant mortality rates are deaths under 1 year per 1,000 live births in specified area]

Area	12 months ending with October			
	1995		1994	
	Number	Rate	Number	Rate
New England	1,665	15.2	1,100	6.2
Maine	71	5.1	93	6.1
New Hampshire	71	4.8	96	6.6
Vermont	39	5.5	40	6.0
Massachusetts	393	5.0	472	5.6
Rhode Island	91	7.0	84	6.2
Connecticut	---	---	315	7.4
Middle Atlantic	11,934	17.3	4,414	8.0
New York	---	---	2,206	8.0
New Jersey	804	7.2	967	8.2
Pennsylvania	1,130	7.4	1,241	7.9
East North Central	5,361	8.5	5,704	8.9
Ohio	1,328	8.5	1,420	9.0
Indiana	750	9.0	807	9.8
Illinois	1,623	8.7	1,727	9.1
Michigan	1,156	8.6	1,211	8.7
Wisconsin	504	7.5	539	7.8
West North Central	1,866	7.4	1,987	7.9
Minnesota	392	6.2	471	7.3
Iowa	251	7.3	245	6.7
Missouri	592	7.9	619	8.1
North Dakota	49	5.6	59	6.9
South Dakota	115	10.6	123	11.7
Nebraska	183	7.8	171	7.5
Kansas	284	7.6	299	8.8
South Atlantic	5,641	8.6	6,019	9.1
Delaware	70	6.9	76	7.3
Maryland	665	8.9	648	9.2
District of Columbia	155	17.3	185	19.0
Virginia	686	7.5	758	8.1
West Virginia	151	7.2	156	7.1
North Carolina	1,007	9.8	984	9.6
South Carolina	411	8.3	481	9.5
Georgia	1,069	9.4	1,104	10.1
Florida	1,427	7.7	1,627	8.4
East South Central	2,168	9.5	2,072	9.1
Kentucky	403	7.8	403	7.7
Tennessee	722	9.8	649	8.9
Alabama	617	10.0	606	10.0
Mississippi	426	10.5	414	9.9
West South Central	3,468	7.3	3,798	8.1
Arkansas	262	7.8	303	8.8
Louisiana	631	9.2	672	9.8
Oklahoma	408	8.7	452	9.8
Texas ²	2,167	6.6	2,371	7.4
Mountain	1,665	6.9	1,791	7.4
Montana	81	7.2	97	8.8
Idaho	111	6.3	122	7.0
Wyoming	58	9.1	47	7.1
Colorado	354	6.9	370	6.8
New Mexico	203	7.4	254	8.9
Arizona	520	7.4	535	7.9
Utah	219	5.5	223	5.9
Nevada	119	5.8	143	7.0
Pacific	4,411	6.3	4,867	6.5
Washington	414	5.3	416	5.2
Oregon	272	6.2	286	7.0
California ²	3,539	6.4	3,956	6.7
Alaska	72	7.0	74	6.0
Hawaii	114	6.2	135	6.9
Puerto Rico ³	---	---	---	---

--- Data not available.

¹Excludes figures for State shown below as not available.

²Figures include adjustments for varying lengths of reporting periods; see Technical notes.

³Data for Puerto Rico are not included in U.S. total figures.

NOTES: Figures include all revisions received from the States. Figures for the current year reflect revisions received for previous months, and figures for earlier years may differ from those previously published.

Table 5. Provisional number of deaths and death rates, by age, race, and sex, and age-adjusted death rates by race and sex: United States, September 1994 and 1995, cumulative figures 1994 and 1995, and 12 months ending with September 1994 and 1995

[Data are provisional, estimated from a 10-percent sample of deaths. Age-specific rates on an annual basis per 100,000 population in specified group; age-adjusted rates per 100,000 U.S. standard million population; see Technical notes. Because of rounding of estimates, figures may not add to totals. For method of computation and information on standard errors of the estimates, see Technical notes]

Age, race, and sex	September				January–September				12 months ending with September			
	1995		1994		1995		1994		1995		1994	
	Number	Rate	Number	Rate	Number	Rate	Number	Rate	Number	Rate	Number	Rate
All races, both sexes¹												
All ages	178,000	820.9	178,000	827.0	1,735,000	884.0	1,724,000	885.7	2,297,000	876.0	2,293,000	882.1
Under 1 year	} 3,360	70.8	3,740	79.1	22,100	² 769.1	23,800	² 807.1	29,700	² 775.1	32,000	² 809.7
1–4 years					5,200	43.9	5,440	45.7	6,940	43.9	7,070	44.5
5–14 years					6,000	21.0	6,530	23.3	8,020	21.1	8,520	22.8
15–24 years					3,030	102.6	2,960	100.0	25,850	96.2	26,730	99.3
25–34 years	4,710	140.7	5,030	148.0	44,070	144.0	43,880	141.5	58,660	143.2	59,490	143.3
35–44 years	8,720	248.7	8,810	255.9	77,000	242.9	75,700	243.4	101,740	240.5	100,020	241.0
45–54 years	11,290	438.1	11,210	452.7	107,900	466.8	101,690	457.5	141,970	460.6	135,550	457.4
55–64 years	18,990	1,091.6	18,820	1,088.2	175,980	1,114.5	180,490	1,148.4	235,280	1,115.3	240,090	1,143.0
65–74 years	36,890	2,392.9	37,560	2,437.7	362,480	2,584.6	367,280	2,623.3	479,760	2,558.7	488,860	2,612.4
75–84 years	49,370	5,363.6	49,030	5,406.8	490,220	5,903.1	485,440	5,929.7	649,600	5,864.9	645,640	5,906.5
85 years and over	41,180	13,711.6	40,310	14,028.6	417,040	15,443.5	406,850	15,722.1	548,860	15,254.6	540,600	15,701.4
Not stated	70	...	50	...	810	...	450	...	1,020	...	670	...
Age-adjusted rate ³	478.7	...	487.3	...	507.4	...	513.5	...	504.2	...	511.6
All races, male¹												
All ages	90,630	857.9	92,140	878.9	880,720	919.2	882,000	928.3	1,165,310	910.4	1,174,100	924.9
Under 1 year	} 1,940	79.8	2,070	85.5	12,240	² 831.9	13,310	² 883.9	16,660	² 848.3	18,170	² 899.5
1–4 years					2,940	48.8	3,230	53.2	3,950	48.8	4,200	51.7
5–14 years					3,630	25.0	3,930	27.4	4,750	24.4	5,060	26.4
15–24 years					2,250	149.2	2,170	143.6	19,650	143.3	20,480	149.0
25–34 years	3,440	205.6	3,680	216.6	32,120	209.9	32,040	206.7	42,740	208.8	43,770	210.8
35–44 years	6,030	346.7	6,030	352.9	53,440	339.9	52,810	342.4	70,630	336.7	69,580	338.0
45–54 years	7,220	573.6	7,090	585.8	68,070	602.8	64,080	589.8	89,500	594.4	85,230	588.4
55–64 years	11,090	1,341.1	11,420	1,389.6	105,520	1,406.4	110,370	1,478.3	141,690	1,413.9	146,170	1,464.5
65–74 years	21,150	3,085.8	21,750	3,186.3	206,800	3,319.6	211,320	3,411.1	272,630	3,273.3	281,130	3,396.5
75–84 years	24,010	6,710.8	24,250	6,950.3	240,390	7,471.6	237,740	7,564.6	316,930	7,392.8	316,830	7,556.2
85 years and over	13,460	16,023.8	13,630	16,767.6	135,400	17,945.9	132,400	18,152.4	178,380	17,749.3	176,620	18,189.5
Not stated	40	...	50	...	510	...	290	...	640	...	400	...
Age-adjusted rate ³	612.7	...	631.9	...	651.2	...	664.4	...	646.8	...	662.0
All races, female¹												
All ages	86,980	785.6	85,380	777.4	853,890	850.3	842,240	845.9	1,131,250	843.1	1,119,630	841.6
Under 1 year	} 1,420	61.3	1,670	72.4	9,830	² 699.6	10,440	² 724.7	13,060	² 696.9	13,810	² 714.4
1–4 years					2,260	39.2	2,210	38.1	2,990	38.7	2,860	36.9
5–14 years					2,370	17.1	2,610	19.1	3,270	17.6	3,460	18.9
15–24 years					780	53.9	790	54.6	6,200	47.1	6,250	47.5
25–34 years	1,270	75.8	1,340	78.9	11,950	78.1	11,850	76.3	15,920	77.7	15,710	75.7
35–44 years	2,690	152.2	2,780	160.3	23,560	147.5	22,890	146.0	31,110	145.9	30,440	145.5
45–54 years	4,070	308.8	4,110	324.6	39,820	336.8	37,610	331.1	52,470	332.8	50,320	332.2
55–64 years	7,900	865.5	7,400	815.3	70,460	850.4	70,120	849.9	93,590	845.2	93,920	851.8
65–74 years	15,740	1,838.0	15,810	1,842.3	155,680	1,997.2	155,960	1,998.3	207,120	1,987.5	207,730	1,990.7
75–84 years	25,370	4,508.7	24,780	4,441.5	249,830	4,911.4	247,700	4,911.2	332,670	4,900.9	328,810	4,879.9
85 years and over	27,720	12,818.7	26,680	12,942.8	281,630	14,470.8	274,450	14,762.2	370,480	14,282.2	363,980	14,724.1
Not stated	30	300	...	160	...	380	...	270	...
Age-adjusted rate ³	366.2	...	367.3	...	387.7	...	388.0	...	385.3	...	386.8
White												
All ages	152,180	847.9	151,790	851.6	1,489,620	914.4	1,482,050	916.4	1,972,930	906.4	1,972,700	912.9
Under 1 year	} 2,260	60.1	2,390	63.8	14,480	² 643.2	15,300	² 661.9	19,530	² 649.7	20,600	² 663.9
1–4 years					3,520	37.7	3,570	37.8	4,710	37.7	4,680	37.3
5–14 years					4,350	19.2	4,620	20.7	5,760	19.1	6,110	20.5
15–24 years					2,300	97.6	2,080	88.1	18,200	84.9	19,010	88.4
25–34 years	3,290	120.3	3,650	131.3	31,210	124.7	30,850	121.4	41,720	124.6	42,130	123.9
35–44 years	6,360	217.9	6,200	216.2	54,670	207.0	53,580	206.6	72,530	205.8	71,130	205.6
45–54 years	8,590	390.0	8,490	400.3	82,770	418.5	78,220	410.7	108,920	413.0	104,350	410.8
55–64 years	15,410	1,025.5	15,400	1,028.9	142,750	1,045.7	147,630	1,084.4	190,990	1,047.1	196,510	1,079.6
65–74 years	31,900	2,333.7	32,520	2,377.0	312,570	2,511.5	317,730	2,553.9	414,130	2,488.5	422,270	2,539.1
75–84 years	44,340	5,312.9	44,010	5,358.3	440,610	5,851.1	436,710	5,886.9	584,290	5,816.7	581,890	5,874.1
85 years and over	37,670	13,788.2	37,030	14,114.4	383,870	15,619.3	374,560	15,855.7	505,170	15,420.3	497,750	15,826.7
Not stated	50	...	20	...	620	...	280	...	770	...	420	...
Age-adjusted rate ³	453.3	...	459.1	...	479.4	...	485.5	...	476.6	...	484.0

See footnotes at end of table.

Table 5. Provisional number of deaths and death rates, by age, race, and sex, and age-adjusted death rates by race and sex: United States, September 1994 and 1995, cumulative figures 1994 and 1995, and 12 months ending with September 1994 and 1995—Con.

[Data are provisional, estimated from a 10-percent sample of deaths. Age-specific rates on an annual basis per 100,000 population in specified group; age-adjusted rates per 100,000 U.S. standard million population; see Technical notes. Because of rounding of estimates, figures may not add to totals. For method of computation and information on standard errors of the estimates, see Technical notes]

Age, race, and sex	September				January–September				12 months ending with September			
	1995		1994		1995		1994		1995		1994	
	Number	Rate	Number	Rate	Number	Rate	Number	Rate	Number	Rate	Number	Rate
White male												
All ages.	76,790	872.1	78,310	895.7	748,300	936.5	748,980	944.4	990,070	927.3	997,920	941.7
Under 1 year.	} 1,350	70.0	1,330	69.2	8,110	² 702.4	8,480	² 716.6	10,970	² 711.4	11,610	² 730.6
1–4 years					2,130	44.5	2,140	44.5	2,830	44.1	2,810	43.7
5–14 years					2,620	22.7	2,740	23.8	3,390	21.9	3,650	23.9
15–24 years	1,660	137.3	1,490	122.9	13,680	124.2	14,360	130.0	18,450	125.4	18,660	126.4
25–34 years	2,470	178.9	2,750	195.9	23,220	183.7	22,910	178.6	30,950	183.0	31,380	182.7
35–44 years	4,500	307.4	4,290	298.3	38,590	291.4	37,790	290.5	51,280	290.3	50,120	288.9
45–54 years	5,520	507.6	5,460	521.4	52,630	539.2	49,790	529.6	69,090	530.6	66,350	529.1
55–64 years	9,130	1,263.7	9,440	1,312.8	86,790	1,323.0	91,220	1,394.7	116,540	1,329.9	120,730	1,380.9
65–74 years	18,220	2,976.3	19,220	3,149.4	179,730	3,227.9	183,760	3,315.6	237,510	3,189.8	244,540	3,302.4
75–84 years	21,650	6,650.0	21,840	6,892.9	217,140	7,417.9	214,820	7,523.0	286,060	7,333.0	286,650	7,523.6
85 years and over.	12,250	16,165.0	12,450	16,924.6	123,230	18,098.9	120,790	18,322.7	162,490	17,915.1	161,150	18,333.3
Not stated	40	...	20	...	420	...	190	...	520	...	270	...
Age-adjusted rate ³	578.8	...	597.4	...	615.0	...	626.8	...	610.6	...	625.0
White female												
All ages.	75,390	824.5	73,480	809.1	741,320	893.1	733,070	889.5	982,850	886.2	974,770	885.2
Under 1 year.	} 900	49.2	1,050	57.5	6,370	² 580.8	6,820	² 605.4	8,550	² 584.0	8,990	² 593.8
1–4 years					1,390	30.6	1,430	31.0	1,880	30.8	1,870	30.5
5–14 years					1,730	15.7	1,880	17.2	2,370	16.1	2,460	17.0
15–24 years	640	55.8	580	50.4	4,520	43.2	4,650	44.4	5,960	42.7	6,220	44.4
25–34 years	820	60.6	900	65.4	7,990	64.5	7,930	63.2	10,770	65.0	10,750	63.9
35–44 years	1,870	128.5	1,910	133.6	16,080	122.1	15,790	122.1	21,250	120.9	21,000	121.7
45–54 years	3,070	275.3	3,030	282.2	30,140	301.2	28,430	294.7	39,830	298.3	38,000	295.5
55–64 years	6,290	806.2	5,960	766.4	55,960	789.2	56,420	797.4	74,450	785.6	75,780	801.1
65–74 years	13,680	1,812.5	13,290	1,753.7	132,830	1,931.5	133,970	1,941.9	176,620	1,920.6	177,730	1,926.4
75–84 years	22,690	4,457.6	22,170	4,394.5	223,470	4,854.9	221,890	4,862.8	298,240	4,854.2	295,240	4,843.2
85 years and over.	25,420	12,875.8	24,580	13,019.4	260,640	14,667.0	253,780	14,901.8	342,680	14,465.2	336,600	14,854.4
Not stated	10	...	—	...	200	...	90	...	250	...	150	...
Age-adjusted rate ³	347.4	...	343.6	...	365.9	...	367.7	...	364.1	...	366.7
Black												
All ages.	22,260	814.8	22,460	833.8	215,700	872.1	214,300	879.1	284,920	862.5	284,020	872.5
Under 1 year.	} 990	133.5	1,190	161.5	6,820	² 1,464.0	7,480	² 1,579.2	9,190	² 1,479.9	10,150	² 1,603.5
1–4 years					1,460	78.5	1,560	82.6	1,960	78.8	1,960	77.9
5–14 years					1,370	30.9	1,580	36.3	1,830	31.1	2,020	35.1
15–24 years	590	131.4	780	175.4	6,580	161.6	6,780	167.9	9,130	167.9	9,100	169.0
25–34 years	1,320	296.6	1,210	270.4	11,690	288.4	11,510	282.0	15,340	282.5	15,320	280.6
35–44 years	2,090	488.2	2,360	566.8	20,390	528.2	20,470	545.7	26,590	516.0	26,630	532.3
45–54 years	2,430	903.0	2,400	939.8	22,290	927.0	20,850	911.9	29,320	915.1	27,670	907.8
55–64 years	3,060	1,744.6	2,960	1,719.0	29,130	1,836.3	28,790	1,845.6	38,880	1,834.8	38,220	1,834.9
65–74 years	4,380	3,293.6	4,400	3,333.3	44,060	3,654.0	44,000	3,672.9	57,910	3,594.7	59,160	3,697.5
75–84 years	4,380	6,405.0	4,330	6,347.2	43,000	6,962.2	42,900	6,975.7	56,680	6,878.6	55,880	6,789.8
85 years and over.	3,010	13,220.8	2,810	13,730.3	28,740	14,051.2	28,230	15,252.9	37,850	13,915.4	37,690	15,383.7
Not stated	20	...	20	...	170	...	150	...	230	...	230	...
Age-adjusted rate ³	723.9	...	748.6	...	775.5	...	784.4	...	768.0	...	779.3
Black male												
All ages.	12,080	932.2	11,930	933.3	115,610	985.5	116,880	1,010.7	153,020	976.6	154,480	1,000.3
Under 1 year.	} 510	135.6	620	165.9	3,620	² 1,522.6	4,350	² 1,811.1	5,020	² 1,593.7	5,950	² 1,853.6
1–4 years					720	76.3	850	90.4	990	78.4	1,090	85.6
5–14 years					900	40.3	970	44.2	1,190	39.9	1,150	39.4
15–24 years	460	204.9	570	256.5	5,160	253.6	5,350	266.1	7,260	267.2	7,290	271.0
25–34 years	890	422.8	810	382.4	8,070	420.3	8,060	417.3	10,630	413.9	10,910	422.2
35–44 years	1,340	670.6	1,560	802.5	13,490	747.6	13,890	793.5	17,570	730.9	17,910	767.7
45–54 years	1,570	1,287.2	1,470	1,269.3	13,860	1,270.6	12,710	1,224.1	18,350	1,263.8	16,730	1,210.6
55–64 years	1,720	2,257.5	1,720	2,292.1	16,440	2,385.4	16,900	2,486.5	21,990	2,387.6	22,360	2,462.6
65–74 years	2,540	4,585.1	2,130	3,891.1	23,560	4,696.1	24,320	4,898.1	30,660	4,576.1	32,280	4,861.4
75–84 years	2,050	8,231.6	2,060	8,382.4	19,870	8,847.0	19,750	8,926.2	26,440	8,842.8	25,790	8,712.8
85 years and over.	1,000	15,208.3	970	16,166.7	9,840	16,649.0	9,640	17,922.8	12,840	16,253.2	12,890	18,154.9
Not stated	—	...	20	...	80	...	90	...	110	...	120	...
Age-adjusted rate ³	969.7	...	969.6	...	1,021.3	...	1,052.8	...	1,013.9	...	1,042.0

See footnotes at end of table.

Table 5. Provisional number of deaths and death rates, by age, race, and sex, and age-adjusted death rates by race and sex: United States, September 1994 and 1995, cumulative figures 1994 and 1995, and 12 months ending with September 1994 and 1995—Con.

[Data are provisional, estimated from a 10-percent sample of deaths. Age-specific rates on an annual basis per 100,000 population in specified group; age-adjusted rates per 100,000 U.S. standard million population; see Technical notes. Because of rounding of estimates, figures may not add to totals. For method of computation and information on standard errors of the estimates, see Technical notes]

Age, race, and sex	September				January–September				12 months ending with September			
	1995		1994		1995		1994		1995		1994	
	Number	Rate	Number	Rate	Number	Rate	Number	Rate	Number	Rate	Number	Rate
Black female												
All ages.	10,180	708.8	10,540	744.7	100,090	769.6	97,420	760.3	131,890	759.4	129,540	757.1
Under 1 year.	} 480	131.4	570	157.0	3,200	² 1,399.4	3,120	² 1,340.8	4,170	² 1,362.7	4,190	² 1,342.9
1–4 years					750	81.8	710	77.8	970	79.1	870	70.1
5–14 years					480	22.1	620	29.1	650	22.5	870	30.6
15–24 years					130	57.9	210	94.4	1,420	70.7	1,420	70.4
25–34 years	430	183.4	400	169.7	3,620	169.6	3,450	160.4	4,710	164.6	4,410	153.4
35–44 years	750	328.5	800	360.4	6,900	334.9	6,580	329.2	9,020	328.1	8,720	326.6
45–54 years	860	584.5	920	659.2	8,420	640.7	8,150	651.4	10,980	626.7	10,940	656.7
55–64 years	1,340	1,350.7	1,240	1,276.4	12,690	1,414.6	11,890	1,350.6	16,890	1,409.8	15,860	1,349.8
65–74 years	1,840	2,371.5	2,280	2,951.1	20,490	2,910.1	19,670	2,807.4	27,260	2,896.9	26,880	2,871.8
75–84 years	2,330	5,358.8	2,280	5,224.1	23,130	5,878.7	23,150	5,883.5	30,250	5,761.9	30,080	5,707.8
85 years and over.	2,010	12,413.7	1,840	12,719.7	18,900	13,006.6	18,590	14,175.2	25,010	12,958.5	24,800	14,252.9
Not stated	20	...	–	...	90	...	60	...	120	...	110	...
Age-adjusted rate ³	535.3	...	578.6	...	585.2	...	577.4	...	577.7	...	575.9

... Category not applicable.

– Quantity zero.

¹Includes races other than white and black.

²Death rates under 1 year (based on population estimates) differ from infant mortality rates (based on live births); see table 9 for infant mortality rates.

³For method of computation, see Technical notes.

NOTES: Figures include all revisions received from the States. Cumulative and 12-month figures for the current year reflect revisions received for previous months, and figures for earlier years may differ from those previously published. Data include adjustments for New Jersey, which is not included in the sample for September 1995.

Table 6. Provisional number of deaths and death rates for 72 selected causes and Human immunodeficiency virus infection: United States, September 1994 and 1995, cumulative figures 1994 and 1995, and 12 months ending with September 1994 and 1995

[Data are provisional, estimated from a 10-percent sample of deaths. Rates on an annual basis per 100,000 estimated population. Because of rounding of estimates, figures may not add to totals. For method of computation and information on standard errors of the estimates, see Technical notes. For explanation of asterisks preceding cause-of-death categories, see Technical notes]

Cause of death (Ninth Revision, International Classification of Diseases, 1975)	September		September		January–September		January–September		12 months ending with September		12 months ending with September	
	1995		1994		1995		1994		1995		1994	
	Number	Rate	Number	Rate	Number	Rate	Number	Rate	Number	Rate	Number	Rate
All causes	178,000	820.9	178,000	827.0	1,735,000	884.0	1,724,000	885.7	2,297,000	876.0	2,293,000	882.1
Shigellosis and amebiasis	—	*	—	*	—	*	10	*	—	*	10	*
Certain other intestinal infections.	40	*	80	*	500	0.2	640	0.3	610	0.2	780	0.3
Tuberculosis	120	0.5	120	0.5	1,030	0.5	1,130	0.6	1,350	0.5	1,400	0.5
Tuberculosis of respiratory system	110	0.5	80	*	790	0.4	860	0.4	1,020	0.4	1,090	0.4
Other tuberculosis	10	*	40	*	240	0.1	270	0.1	330	0.1	310	0.1
Whooping cough.	—	*	—	*	—	*	20	*	—	*	20	*
Streptococcal sore throat, scarlatina, and erysipelas.	—	*	—	*	10	*	—	*	10	*	—	*
Meningococcal infection	—	*	30	*	280	0.1	230	0.1	350	0.1	290	0.1
Septicemia	1,410	6.5	1,610	7.5	16,020	8.2	15,210	7.8	20,700	7.9	20,460	7.9
Acute poliomyelitis.	—	*	—	*	—	*	—	*	—	*	—	*
Measles	—	*	—	*	—	*	10	*	—	*	10	*
Viral hepatitis.	330	1.5	280	1.3	2,620	1.3	2,040	1.0	3,390	1.3	2,650	1.0
Syphilis	20	*	20	*	120	0.1	90	*	130	0.0	140	0.1
All other infectious and parasitic diseases ¹	4,100	18.9	4,470	20.8	37,310	19.0	34,980	18.0	49,110	18.7	46,630	17.9
Malignant neoplasms, including neoplasms of lymphatic and hematopoietic tissues	44,330	204.9	44,340	206.5	402,890	205.3	403,490	207.3	537,960	205.2	538,360	207.1
Malignant neoplasms of lip, oral cavity, and pharynx	730	3.4	670	3.1	6,060	3.1	5,840	3.0	7,980	3.0	8,190	3.2
Malignant neoplasms of digestive organs and peritoneum	10,070	46.5	10,710	49.9	93,790	47.8	95,130	48.9	125,580	47.9	126,750	48.8
Malignant neoplasms of respiratory and intrathoracic organs	13,020	60.2	12,490	58.2	116,240	59.2	115,600	59.4	154,600	59.0	154,450	59.4
Malignant neoplasm of breast	3,640	16.8	3,530	16.4	32,990	16.8	32,910	16.9	44,210	16.9	43,930	16.9
Malignant neoplasms of genital organs	5,140	23.7	5,330	24.8	45,830	23.4	46,560	23.9	61,230	23.4	61,680	23.7
Malignant neoplasms of urinary organs	1,860	8.6	1,760	8.2	17,480	8.9	16,560	8.5	22,850	8.7	22,450	8.6
Malignant neoplasms of all other and unspecified sites	5,620	26.0	5,610	26.1	49,550	25.2	50,490	25.9	66,540	25.4	67,650	26.0
Leukemia.	1,490	6.9	1,780	8.3	14,920	7.6	15,160	7.8	19,740	7.5	19,820	7.6
Other malignant neoplasms of lymphatic and hematopoietic tissues.	2,770	12.8	2,470	11.5	26,030	13.3	25,240	13.0	35,240	13.4	33,430	12.9
Benign neoplasms, carcinoma in situ, and neoplasms of uncertain behavior and of unspecified nature	560	2.6	520	2.4	6,440	3.3	5,880	3.0	8,240	3.1	7,980	3.1
Diabetes mellitus	4,560	21.1	4,250	19.8	44,170	22.5	41,230	21.2	58,200	22.2	55,150	21.2
Nutritional deficiencies	260	1.2	250	1.2	2,760	1.4	2,400	1.2	3,550	1.4	3,240	1.2
Anemias	290	1.3	340	1.6	3,070	1.6	3,090	1.6	4,130	1.6	4,270	1.6
Meningitis	40	*	20	*	650	0.3	650	0.3	940	0.4	840	0.3
Major cardiovascular diseases	71,080	328.5	71,270	332.0	708,160	360.9	711,000	365.3	936,340	357.1	945,580	363.7
Diseases of heart	54,890	253.7	55,610	259.0	549,620	280.1	553,960	284.7	726,400	277.1	737,860	283.8
Rheumatic fever and rheumatic heart disease.	370	1.7	380	1.8	3,980	2.0	4,240	2.2	5,260	2.0	5,720	2.2
Hypertensive heart disease	1,780	8.2	2,100	9.8	18,410	9.4	18,390	9.4	23,810	9.1	23,610	9.1
Hypertensive heart and renal disease	120	0.5	170	0.8	1,730	0.9	1,530	0.8	2,390	0.9	2,190	0.8
Ischemic heart disease	35,620	164.6	37,060	172.6	359,320	183.1	366,320	188.2	475,140	181.2	488,440	187.9
Acute myocardial infarction	16,550	76.5	16,710	77.8	163,830	83.5	170,520	87.6	218,430	83.3	228,040	87.7
Other acute and subacute forms of ischemic heart disease	200	0.9	230	1.1	1,930	1.0	1,990	1.0	2,620	1.0	2,730	1.1
Angina pectoris	70	*	70	*	540	0.3	680	0.3	760	0.3	930	0.4
Old myocardial infarction and other forms of chronic ischemic heart disease	18,810	86.9	20,050	93.4	193,030	98.4	193,130	99.2	253,330	96.6	256,750	98.8
Other diseases of endocardium	1,070	4.9	1,030	4.8	11,540	5.9	10,820	5.6	15,220	5.8	14,850	5.7
All other forms of heart disease	15,930	73.6	14,870	69.3	154,640	78.8	152,650	78.4	204,590	78.0	203,060	78.1
Hypertension with or without renal disease	890	4.1	850	4.0	9,430	4.8	8,140	4.2	12,070	4.6	10,850	4.2
Cerebrovascular diseases	12,030	55.6	11,640	54.2	117,570	59.9	115,710	59.5	155,800	59.4	152,970	58.8
Intracerebral and other intracranial hemorrhage.	1,430	6.6	1,720	8.0	16,240	8.3	15,510	8.0	21,830	8.3	20,620	7.9
Cerebral thrombosis and unspecified occlusion of cerebral arteries.	960	4.4	1,300	6.0	10,060	5.1	11,380	5.8	13,660	5.2	15,290	5.9
Cerebral embolism	50	*	60	*	450	0.2	730	0.4	640	0.2	850	0.3

See footnotes at end of table.

Table 6. Provisional number of deaths and death rates for 72 selected causes and Human immunodeficiency virus infection: United States, September 1994 and 1995, cumulative figures 1994 and 1995, and 12 months ending with September 1994 and 1995—Con.

[Data are provisional, estimated from a 10-percent sample of deaths. Rates on an annual basis per 100,000 estimated population. Because of rounding of estimates, figures may not add to totals. For method of computation and information on standard errors of the estimates, see Technical notes. For explanation of asterisks preceding cause-of-death categories, see Technical notes]

Cause of death (Ninth Revision, International Classification of Diseases, 1975)	September		January–September				12 months ending with September					
	1995		1994		1995		1994		1995		1994	
	Number	Rate	Number	Rate	Number	Rate	Number	Rate	Number	Rate	Number	Rate
All other and late effects of cerebrovascular diseases430,433,435–438	9,600	44.4	8,560	39.9	90,830	46.3	88,080	45.3	119,670	45.6	116,210	44.7
Atherosclerosis440	1,160	5.4	1,280	6.0	12,270	6.2	13,270	6.8	16,420	6.3	17,390	6.7
Other diseases of arteries, arterioles, and capillaries441–448	2,110	9.7	1,890	8.8	19,260	9.8	19,930	10.2	25,660	9.8	26,510	10.2
Acute bronchitis and bronchiolitis466	30	*	20	*	450	0.2	450	0.2	530	0.2	550	0.2
Pneumonia and influenza480–487	5,270	24.3	5,130	23.9	60,710	30.9	63,760	32.8	78,770	30.0	83,110	32.0
Pneumonia480–486	5,260	24.3	5,120	23.8	60,300	30.7	62,520	32.1	78,350	29.9	81,650	31.4
Influenza487	10	*	10	*	410	0.2	1,240	0.6	420	0.2	1,460	0.6
Chronic obstructive pulmonary disease and allied conditions490–496	7,060	32.6	7,160	33.3	79,690	40.6	77,720	39.9	103,140	39.3	101,870	39.2
Bronchitis, chronic and unspecified490–491	140	0.6	290	1.4	2,290	1.2	2,750	1.4	3,150	1.2	3,600	1.4
Emphysema492	1,080	5.0	1,320	6.1	13,490	6.9	13,130	6.7	17,580	6.7	17,200	6.6
Asthma493	380	1.8	350	1.6	4,240	2.2	4,060	2.1	5,400	2.1	5,100	2.0
Other chronic obstructive pulmonary diseases and allied conditions494–496	5,460	25.2	5,200	24.2	59,680	30.4	57,790	29.7	77,010	29.4	75,970	29.2
Ulcer of stomach and duodenum531–533	450	2.1	530	2.5	4,480	2.3	4,740	2.4	5,760	2.2	5,890	2.3
Appendicitis540–543	30	*	–	*	330	0.2	220	0.1	430	0.2	320	0.1
Hernia of abdominal cavity and intestinal obstruction without mention of hernia550–553,560	480	2.2	480	2.2	4,700	2.4	4,480	2.3	6,180	2.4	5,960	2.3
Chronic liver disease and cirrhosis571	2,080	9.6	1,960	9.1	19,130	9.7	18,960	9.7	25,830	9.9	25,450	9.8
Cholelithiasis and other disorders of gallbladder574–575	170	0.8	150	0.7	1,970	1.0	2,040	1.0	2,530	1.0	2,760	1.1
Nephritis and nephrotic syndrome, and nephrosis580–589	1,810	8.4	1,810	8.4	19,310	9.8	18,090	9.3	25,920	9.9	23,780	9.1
Acute glomerulonephritis and nephrotic syndrome580–581	10	*	10	*	220	0.1	210	0.1	250	0.1	310	0.1
Chronic glomerulonephritis, nephritis and nephropathy, not specified as acute or chronic, and renal sclerosis, unspecified582–583,587	90	*	120	0.5	900	0.5	1,140	0.6	1,370	0.5	1,490	0.6
Renal failure, disorders resulting from impaired renal function, and small kidney of unknown cause584–586,588–589	1,710	7.9	1,680	7.8	18,190	9.3	16,740	8.6	24,300	9.3	21,970	8.5
Infections of kidney590	60	*	80	*	620	0.3	790	0.4	860	0.3	1,030	0.4
Hyperplasia of prostate600	50	*	30	*	330	0.2	250	0.1	480	0.2	350	0.1
Complications of pregnancy, childbirth, and the puerperium630–676	50	*	30	*	230	0.1	280	0.1	290	0.1	370	0.1
Pregnancy with abortive outcome630–638	–	*	–	*	10	*	60	*	10	*	80	*
Other complications of pregnancy, childbirth, and the puerperium640–676	50	*	30	*	220	0.1	220	0.1	280	0.1	290	0.1
Congenital anomalies740–759	900	4.1	1,080	5.0	8,440	4.3	8,490	4.4	11,510	4.4	11,340	4.4
Certain conditions originating in the perinatal period760–779	1,040	4.8	1,140	5.3	10,240	5.2	10,710	5.5	13,710	5.2	14,850	5.7
Birth trauma, intrauterine hypoxia, birth asphyxia, and respiratory distress syndrome767–769	90	*	140	0.6	1,460	0.7	1,850	0.9	2,000	0.8	2,730	1.1
Other conditions originating in the perinatal period760–766,770–779	950	4.4	1,000	4.6	8,770	4.5	8,860	4.5	11,710	4.5	12,120	4.7
Symptoms, signs, and ill-defined conditions780–799	3,130	14.5	2,960	13.8	31,200	15.9	30,260	15.5	41,180	15.7	40,260	15.5
All other diseasesResidual	15,770	72.9	15,230	70.9	158,810	80.9	152,150	78.2	210,130	80.1	202,470	77.9
Accidents and adverse effectsE800–E949	7,670	35.4	7,650	35.6	66,690	34.0	66,300	34.1	88,760	33.9	89,030	34.2
Motor vehicle accidentsE810–E825	3,950	18.2	3,990	18.6	31,970	16.3	31,070	16.0	42,950	16.4	42,290	16.3
All other accidents and adverse effectsE800–E807,E826–E949	3,720	17.2	3,660	17.0	34,720	17.7	35,230	18.1	45,810	17.5	46,730	18.0
SuicideE950–E959	2,540	11.7	2,280	10.6	22,880	11.6	22,780	11.7	30,670	11.7	30,170	11.6
Homicide and legal interventionE960–E978	1,770	8.2	1,900	8.8	16,640	8.5	17,890	9.2	22,430	8.6	24,080	9.3
All other external causesE980–E999	130	0.6	300	1.4	1,750	0.9	1,750	0.9	2,450	0.9	2,290	0.9
Human immunodeficiency virus infection ²*042–*044	3,460	16.0	3,870	18.0	32,200	16.4	29,930	15.4	42,580	16.2	39,860	15.3

– Quantity zero

* Figure does not meet standards of reliability or precision (see Technical notes).

0.0 Quantity more than zero but less than 0.05.

¹Includes data for deaths due to Human immunodeficiency virus infection (categories *042–*044) shown separately below; see Technical notes.

²Included in All other infectious and parasitic diseases shown above.

NOTES: Figures include all revisions received from the States. Cumulative and 12-month figures for the current year reflect revisions received for previous months, and figures for earlier years may differ from those previously published. Data include adjustments for New Jersey, which is not included in the sample for September 1995.

Table 7. Provisional number of deaths and death rates for 16 selected subcategories of Malignant neoplasms, including neoplasms of lymphatic and hematopoietic tissues: United States, September 1994 and 1995, cumulative figures 1994 and 1995, and 12 months ending with September 1994 and 1995

[Data are provisional, estimated from a 10-percent sample of deaths. Rates on an annual basis per 100,000 estimated population. Because of rounding of estimates, figures may not add to totals. For method of computation and information on standard errors of the estimates, see Technical notes]

Cause of death (Ninth Revision, International Classification of Diseases, 1975)	September		January–September				12 months ending with September					
	1995		1994		1995		1994		1995		1994	
	Number	Rate	Number	Rate	Number	Rate	Number	Rate	Number	Rate	Number	Rate
Malignant neoplasms, including neoplasms of lymphatic and hematopoietic tissues ¹140–208	44,330	204.9	44,340	206.5	402,890	205.3	403,490	207.3	537,960	205.2	538,360	207.1
Malignant neoplasm of esophagus150	840	3.9	890	4.1	7,910	4.0	8,660	4.4	10,420	4.0	11,370	4.4
Malignant neoplasm of stomach151	1,300	6.0	1,280	6.0	10,570	5.4	10,160	5.2	14,020	5.3	13,470	5.2
Malignant neoplasms of colon, rectum, rectosigmoid junction, and anus153,154	4,230	19.5	4,920	22.9	41,830	21.3	43,920	22.6	56,550	21.6	58,690	22.6
Malignant neoplasm of pancreas157	2,200	10.2	2,280	10.6	20,450	10.4	20,010	10.3	27,190	10.4	26,680	10.3
Malignant neoplasms of trachea, bronchus, and lung162	12,540	57.9	12,090	56.3	112,270	57.2	111,760	57.4	149,220	56.9	149,380	57.5
Malignant melanoma of skin172	530	2.4	560	2.6	5,420	2.8	5,500	2.8	7,050	2.7	7,430	2.9
Malignant neoplasm of cervix uteri180	420	1.9	400	1.9	3,490	1.8	3,540	1.8	4,540	1.7	4,800	1.8
Malignant neoplasms of body of uterus and of uterus, part unspecified179,182	400	1.8	470	2.2	4,470	2.3	4,470	2.3	5,880	2.2	6,030	2.3
Malignant neoplasm of ovary183.0	1,070	4.9	1,250	5.8	10,040	5.1	10,160	5.2	13,570	5.2	13,190	5.1
Malignant neoplasm of prostate185	3,120	14.4	3,030	14.1	26,550	13.5	26,850	13.8	35,430	13.5	35,510	13.7
Malignant neoplasm of bladder188	910	4.2	850	4.0	8,690	4.4	8,150	4.2	11,190	4.3	11,020	4.2
Malignant neoplasms of kidney and other and unspecified urinary organs189	950	4.4	900	4.2	8,800	4.5	8,410	4.3	11,670	4.5	11,430	4.4
Malignant neoplasms of brain and other and unspecified parts of nervous system191,192	1,040	4.8	1,130	5.3	8,570	4.4	8,910	4.6	11,800	4.5	11,690	4.5
Hodgkin's disease201	110	0.5	80	*	1,170	0.6	1,120	0.6	1,570	0.6	1,450	0.6
Malignant lymphoma other than Hodgkin's disease200,202	1,820	8.4	1,570	7.3	17,110	8.7	16,600	8.5	23,060	8.8	21,990	8.5
Multiple myeloma and other immunoproliferative neoplasms203	840	3.9	820	3.8	7,750	3.9	7,520	3.9	10,610	4.0	9,990	3.8

¹Includes figures for subcategories not shown below.

NOTES: Figures include all revisions received from the States. Cumulative and 12-month figures for the current year reflect revisions received for previous months, and figures for earlier years may differ from those previously published. Data include adjustments for New Jersey, which is not included in the sample for September 1995.

Table 8. Provisional number of deaths and death rates for Injury by firearms: United States, September 1994 and 1995, cumulative figures 1994 and 1995, and 12 months ending with September 1994 and 1995

[Data are provisional, estimated from a 10-percent sample of deaths. Rates on an annual basis per 100,000 estimated population. Because of rounding of estimates, figures may not add to totals. For method of computation and information on standard errors of the estimates, see Technical notes]

Cause of death (Ninth Revision, International Classification of Diseases, 1975)	September		January–September				12 months ending with September					
	1995		1994		1995		1994		1995		1994	
	Number	Rate	Number	Rate	Number	Rate	Number	Rate	Number	Rate	Number	Rate
Injury by firearmsE922,E955.0–E955.4,E965.0–965.4,E970,E985.0–E985.4	2,840	13.1	3,060	14.2	26,470	13.5	28,630	14.7	36,200	13.8	38,440	14.8
Accident caused by firearm missileE922	60	*	130	0.6	870	0.4	1,050	0.5	1,360	0.5	1,550	0.6
Suicide by firearmsE955.0–E955.4	1,560	7.2	1,380	6.4	13,750	7.0	14,510	7.4	18,620	7.1	19,180	7.4
Homicide and legal intervention by firearmsE965.0–E965.4,E970	1,220	5.6	1,460	6.8	11,670	5.9	12,870	6.6	15,940	6.1	17,440	6.7
Injury by firearms, undetermined whether accidentally or purposely inflictedE985.0–E985.4	–	*	80	*	180	0.1	200	0.1	270	0.1	270	0.1

* Figure does not meet standards of reliability or precision (see Technical notes).

– Quantity zero.

NOTES: Figures include all revisions received from the States. Cumulative and 12-month figures for the current year reflect revisions received for previous months, and figures for earlier years may differ from those previously published. Data include adjustments for New Jersey, which is not included in the sample for September 1995.

Table 9. Provisional number of deaths under 1 year and infant mortality rates, by age and for 10 selected causes: United States, September 1994 and 1995, cumulative figures 1994 and 1995, and 12 months ending with September 1994 and 1995

[Data are provisional, estimated from a 10-percent sample of deaths. Rates on an annual basis per 100,000 live births. Because of rounding of estimates, figures may not add to totals. For method of computation and information on standard errors of the estimates, see Technical notes]

Age and cause of death (Ninth Revision, International Classification of Diseases, 1975)	September		January–September				12 months ending with September					
	1995		1994		1995		1994		1995		1994	
	Number	Rate	Number	Rate	Number	Rate	Number	Rate	Number	Rate	Number	Rate
Total, under 1 year	2,300	693.6	2,500	775.9	22,100	752.1	23,800	795.8	29,700	760.4	32,000	804.4
Under 28 days	1,560	477.7	1,720	525.4	14,100	479.7	14,810	496.1	18,930	483.9	20,360	512.0
28 days–11 months	700	214.4	810	247.4	7,970	271.1	8,940	299.5	10,780	275.5	11,620	292.2
Certain gastrointestinal diseases008–009,535,555–558	20	*	10	3.1	160	5.4	210	7.0	200	5.1	260	6.5
Pneumonia and influenza480–487	–	*	30	*	250	8.5	370	12.4	330	8.4	420	10.6
Congenital anomalies740–759	520	159.2	640	195.5	4,610	156.8	5,030	168.5	6,360	162.6	6,680	168.0
Disorders relating to short gestation and unspecified low birthweight765	230	70.4	280	85.5	2,870	97.6	2,970	99.5	3,770	96.4	3,910	98.3
Birth trauma767	20	*	10	*	100	*	170	5.7	150	3.8	180	4.5
Intrauterine hypoxia and birth asphyxia768	20	*	50	*	380	12.9	410	13.7	520	13.3	620	15.6
Respiratory distress syndrome769	40	*	80	*	940	32.0	1,220	40.9	1,280	32.7	1,870	47.0
Other conditions originating in the perinatal period760–764,766,770–779	710	217.4	710	216.9	5,790	197.0	5,730	192.0	7,780	198.9	7,980	200.7
Sudden infant death syndrome798.0	210	64.3	280	85.5	2,190	74.5	2,700	90.5	3,100	79.2	3,700	93.1
All other causesResidual	490	150.1	430	131.3	4,780	162.6	4,930	165.2	6,240	159.5	6,360	159.9

* Figure does not meet standards of reliability or precision (see Technical notes).

– Quantity zero.

NOTES: Figures include all revisions received from the States. Cumulative and 12-month figures for the current year reflect revisions received for previous months, and figures for earlier years may differ from those previously published. Data include adjustments for New Jersey, which is not included in the sample for September 1995.

Technical notes

Nature and sources of data

Data in this report are provisional unless otherwise specified and include only events occurring within the United States (50 States and the District of Columbia). Mortality data exclude fetal deaths. Data for the Commonwealth of Puerto Rico are not included in the U.S. totals.

Birth, death, and infant death figures in tables 2 and 4 for each State are estimates by State of residence. These estimates are derived by applying adjustment ratios to the actual counts of certificates for all events occurring in the State and received in registration offices during a 1-month period regardless of date of the event. The adjustment ratios for each data year represent the observed relationship between final State occurrence and residence figures for the three most recent years for which final data were available and are expressed as a single ratio for each State. As in previous years, monthly State marriage and divorce figures represent the actual count of all events occurring in the State (State of occurrence) that were received in the registration offices during the 1-month period. Delay in the receipt of certificates in a registration office may result in a low State figure for a given month followed by a high figure for the month(s) in which the delayed records are received. Data for previous months and cumulative data include revised figures received from the States.

Figures for births, deaths, and infant deaths for California in tables 2 and 4 contain adjustments for varying lengths of State reporting periods. Figures for Texas for all events shown in tables 2–4 also are adjusted for varying lengths of State reporting periods. The figures for both States are adjusted by the ratio between the number of days in the data month and the number of days in the State reporting period. The adjusted figures are included in the U.S. totals shown elsewhere in this report.

U.S. totals for births, deaths, and infant deaths are based on the State estimates by State of residence and, therefore, in effect, exclude events to nonresidents of the United States. Events to nonresidents of the United States are

included in all marriage and divorce figures. The effect of excluding events to nonresidents from the U.S. totals is small.

Provisional totals for the United States include estimates for State data shown as not available. Provisional totals for births and marriages for the entire United States include adjustments for observed differences between provisional and final monthly figures.

Divorce figures include reported annulments. The monthly national divorce estimate is obtained by multiplying the total for the reporting areas by the ratio observed between the most recent final annual divorce total for the United States and the provisional total for the reporting areas combined.

Random variation—Although the counts in this report are not subject to sampling variability (except the Current Mortality Sample), they may be affected by random variation. When the number of events is small and the probability of such an event is small, considerable caution must be observed in interpreting the data. Such infrequent events may be assumed to follow a Poisson probability distribution. For this distribution a simple approximation may be used to estimate the random variation as follows:

If N is the number of events in the population and R is the corresponding rate, the chances are 19 in 20 that

$$1. N - 2\sqrt{N} \text{ and } N + 2\sqrt{N}$$

covers the “true” number of events.

$$2. R - 2 \frac{R}{\sqrt{N}} \text{ and } R + 2 \frac{R}{\sqrt{N}}$$

covers the “true” rate.

If the rate R_1 corresponding to N_1 events is compared with the rate R_2 corresponding to N_2 events, the difference between the two rates may be regarded as statistically significant at the 0.05 level if it exceeds

$$2 \sqrt{\frac{R_1^2}{N_1} + \frac{R_2^2}{N_2}}$$

Additional information on random variation in numbers of events, rates, and ratios may be found in the technical appendixes of *Vital Statistics of the United States, 1990, Volumes I and II*.

Rates

Rates are on an annual basis and, except for infant mortality rates, are per 1,000 or 100,000 estimated population residing in the United States. The populations used for computing these rates are furnished by the U.S. Bureau of the Census. Rates shown in this report beginning with 1992 were computed using populations based on the 1990 Census enumeration comparable to those used for final data. Monthly rates are based on populations estimated for the specific month. Year-to-date rates are averages of monthly rates that have been weighted by the number of days in the corresponding months. Rates for 12-month periods are the sum of events for the period per population estimated at the midpoint of the period.

Infant mortality rates are deaths under 1 year of age for the specified period (monthly, year-to-date, or 12-month period) per 1,000 or 100,000 live births. Births used for computing monthly and year-to-date infant mortality rates are adjusted for monthly variation in the number of births. Births used to compute 12-month rates do not contain this adjustment. Births used for computing infant mortality rates are not corrected for observed differences between provisional and final monthly figures as described earlier in “Nature and sources of data.” Because monthly infant mortality rates are based on relatively few events, they are highly variable. Therefore, comparisons of monthly infant mortality rates should be interpreted cautiously; see “Random variation.”

Age-adjusted death rates are used to compare relative mortality risks across groups and over time. However, they should be viewed as constructs or indexes rather than as direct or actual measures of mortality risk. Statistically, they are weighted averages of the age-specific death rates, where the weights represent the fixed population proportions by age. See chapter 5 of an earlier report (1). The age-adjusted death rates presented in this report were computed by the direct method, that is, by applying age-specific death rates to the U.S. standard million population (2). See also chapter 10 of an earlier report (1). Age groups in table 5 were used to compute the age-adjusted

rates shown in that table. It is important not to compare age-adjusted rates with crude rates.

Current Mortality Sample

The Current Mortality Sample (CMS) is a 10-percent systematic sample of death certificates drawn each month after the certificates are counted in the State registration offices. Deaths and death rates for the United States by age, race, sex, and cause are estimated based on the sample. Because of the additional time required to select and process the certificates, data based on the CMS are published 1 month after publication of the U.S. and State counts. Complete information concerning the underlying cause of death sometimes is not available when the sample is drawn. As a result estimates based on sample counts for certain causes are biased. Correction for bias is not made in this report.

Estimated numbers of deaths based on the sample were proportionately adjusted to be consistent with estimates based on the count of death certificates received in State registration offices.

HIV infection—Beginning with data for 1987, the National Center for Health Statistics introduced categories *042–*044 for classifying and coding Human immunodeficiency virus (HIV) infection. The asterisks before the categories indicate that these codes are not part of the

Ninth Revision, International Classification of Diseases. Deaths classified to these categories are included in All other infectious and parasitic diseases in the List of 72 Selected Causes of Death and are also shown separately at the bottom of table 6.

Sampling variability—Because the estimates of deaths and death rates presented in this report with the exception of total deaths and deaths under 1 year are based on a sample of death certificates, they are subject to sampling variability. The estimated relative standard error in the following table is a measure of the

Relative standard errors for estimated numbers of deaths from the Current Mortality Sample expressed as a percent of the estimate

Estimated number of deaths	Relative standard error of estimate (as percent)	
	170,000 estimated deaths each month	2,000,000 estimated deaths each year
10	94.9	94.9
20	67.1	67.1
50	42.4	42.4
100	30.0	30.0
200	21.2	21.2
500	13.4	13.4
1,000	9.5	9.5
2,000	6.7	6.7
5,000	4.2	4.2
10,000	2.9	3.0
20,000	2.0	2.1
50,000	1.1	1.3
100,000	0.6	0.9
200,000	0.6
500,000	0.4
1,000,000	0.2

sampling error of the estimated number of deaths (or of the estimated death rate) expressed as a percent of the estimate. The first column refers to monthly estimates; the second to annual; cumulative year-to-date totals fall between the two.

The chances are about 2 in 3 that the percent difference between an estimate and the result of a complete count is less than the percent shown. The chances are about 19 in 20 that the percent difference is less than twice the percent shown. A figure based on 100 or fewer estimated deaths has a relative standard error of 30 percent or more and is, therefore, considered unreliable. A rate based on 100 or fewer estimated deaths has been replaced by an asterisk.

Unless otherwise specified comparisons made in the text between death rates based on the CMS were statistically significant at the 0.05 level of significance. Lack of comment in the text about any two rates does not mean that the difference was tested and found not to be significant at this level.

References

1. Feinleib M, Zarate AO, eds. Reconsidering age adjustment procedures: Workshop proceedings. National Center for Health Statistics. Vital Health Stat 4(29). 1992.
2. Grove RD, Hetzel AM. Vital statistics rates in the United States, 1940–1960. Public Health Service. Washington: National Center for Health Statistics. 1968.

Suggested citation

National Center for Health Statistics. Births, marriages, divorces, and deaths for October 1995. Monthly vital statistics report; vol 44 no 10. Hyattsville, Maryland: Public Health Service. 1996.

Copyright information

All material appearing in this report is in the public domain and may be reproduced or copied without permission; citation as to source, however, is appreciated.

National Center for Health Statistics

Acting Director
Jack R. Anderson

Acting Deputy Director
Jennifer H. Madans, Ph.D.

Division of Vital Statistics

Director
Mary Anne Freedman

**DEPARTMENT OF
HEALTH & HUMAN SERVICES**

Public Health Service
Centers for Disease Control and Prevention
National Center for Health Statistics
6525 Belcrest Road
Hyattsville, Maryland 20782

FIRST CLASS MAIL
POSTAGE & FEES PAID
PHS/NCHS
PERMIT NO. G-281

**OFFICIAL BUSINESS
PENALTY FOR PRIVATE USE, \$300**

To receive this publication regularly, contact the National Center for Health Statistics by calling 301-436-8500
E-mail: nchsquery@nch10a.em.cdc.gov
Internet: <http://www.cdc.gov/nchswwww/nchshome.htm>

DHHS Publication No. (PHS) 96-1120
6-0311 (4/96)