

User Guide to the 2024 Fetal Death Public Use File



2024 Fetal Death Data Set

User's Guide

ACKNOWLEDGMENTS

Preparation of this user's guide was coordinated by Elizabeth C.W. Gregory and Claudia P. Valenzuela of the Division of Vital Statistics (DVS) under the general direction of Joyce A. Martin, Lead Statistician, Perinatal Statistics and Research Team, Statistical Analysis and Surveillance Branch (SASB). The vital statistics computer file on which it is based was prepared by DVS staff.

The Division of Vital Statistics Director, Paul Sutton, manages the Vital Statistics Cooperative Program, through which the vital registration offices of all states, the District of Columbia, New York City, Puerto Rico, Virgin Islands, Guam, American Samoa, and the Commonwealth of the Northern Mariana Islands, provided the data to the National Center for Health Statistics (NCHS). This Division, and its Data Acquisition, Classification, and Evaluation Branch (DACEB), and Information Technology Branch (ITB), processed computer edits, designed and programmed the tabulations, reviewed the data, prepared documentation for this publication, and were responsible for receipt and processing of the basic data file.

NCHS acknowledges the essential role of the vital registration offices of all states and territories in maintaining the system through which vital statistics data are obtained and their cooperation in providing the information on which this publication is based.

Questions on the documentation or substantive questions concerning the data should be directed to the Statistical Analysis and Surveillance Branch, Division of Vital Statistics, NCHS, 3311 Toledo Road, Hyattsville, MD 20782-2003 (1-800) 232-4636.

Department of Health and Human Services
Centers for Disease Control and Prevention
National Center for Health Statistics
Division of Vital Statistics

2024 Fetal Death Data Set

Contents

Introduction

Control count of records

List of data elements and locations

Record layout and definition of item and codes

Documentation tables

Figure 1. Guidelines for Reporting Live Births, Infant Deaths, Fetal Deaths, and Induced Terminations of Pregnancy

Figure 2. U.S. Standard Report of Fetal Death

Table A. Period of gestation and weight minimums at which fetal death reporting is required, by reporting areas: United States, 2024

Table B. Percent of fetal death records on which specified items were not stated: United States and each state and territory, New York City, and the District of Columbia, 2024

External links

Fetal Mortality in the United States: 2022-2023 and 2023-Provisional 2024
[Vital Statistics Rapid Release, Number 041 \(December 2025\)](#)

Fetal Mortality: United States, 2023
[National Vital Statistics Reports Volume 74, Number 8 June 17, 2025 Fetal Mortality: United States, 2023](#)

Perinatal Mortality in the United States, 2022 and 2023
[NCHS Data Brief, Number 530, July 2025](#)

Cause-of-Death Data from the Fetal Death File, 2018–2020
<https://www.cdc.gov/nchs/data/nvsr/nvsr71/nvsr71-07.pdf>

Births in the United States, 2024
[NCHS Data Brief, Number 535, July 2025](#)

User Guide to the 2024 Natality Public Use File

[UserGuide2024.pdf](#)

Births: Final Data for 2023

[National Vital Statistics Reports, Volume 74, Number 1, March 18, 2025, Births: Final Data for 2023](#)

Infant Mortality in the United States: Provisional Data From the 2024 Period Linked Birth/Infant Death File

[Vital Statistics Rapid Release, Number 042 \(January 2025\)](#)

User Guide to the 2024 Period/2023 Cohort Linked Birth/Infant Death Public Use File

[User Guide to the 2024 Period/2023 Cohort Linked Birth/Infant Death Public Use File](#)

Infant Mortality in the United States, 2023: Data From the Period Linked Birth/Infant Death File

<https://www.cdc.gov/nchs/data/nvsr/nvsr74/nvsr74-07.pdf>

Introduction

This User Guide is for use with the 2024 fetal death public use data. The 2024 fetal death micro-data file may be downloaded at:

http://www.cdc.gov/nchs/data_access/VitalStatsOnline.htm [1]. The micro-data fetal death file for the U.S. does not include geographic detail (e.g., state or county of birth). The territories file contains selected geographic detail. Selected fetal death data for 2005-2023, including some geographic data and cause of death data, are available in CDC WONDER (<http://wonder.cdc.gov>), an interactive online data access tool. Selected fetal death data for 2024 are expected to be available in WONDER in early 2026.

For 2024, fetal death data are included on the file for all 50 states, the District Columbia, Guam and Puerto Rico. Data for American Samoa, the Northern Marianas, and the U.S. Virgin Islands are excluded from the file due to the small number of events reported (4, 9, and 7, respectively).

Definition of fetal death

“Fetal death” means death prior to the complete expulsion or extraction from its mother of a product of human conception, irrespective of the duration of pregnancy and which is not an induced termination of pregnancy. The death is indicated by the fact that after such expulsion or extraction, the fetus does not breathe or show any other evidence of life such as beating of the heart, pulsation of the umbilical cord, or definite movement of voluntary muscles. Heartbeats are to be distinguished from transient cardiac contractions; respirations are to be distinguished from fleeting respiratory efforts or gasps.

This definition [2] has been adopted by the Centers for Disease Control and Prevention’s National Center for Health Statistics (NCHS) as the nationally recommended standard and is

based on the definition published by the World Health Organization in 1950 and revised in 1988. The term “fetal death” is defined on an all-inclusive basis to end confusion arising from the use of such terms as stillbirth, spontaneous abortion, and miscarriage. All U.S. states and registration areas have definitions similar to the standard definition, except for Puerto Rico and Wisconsin, which have no formal definition [3]. Fetal deaths do not include induced terminations of pregnancy. See Figure 1 for a flowchart showing best practices for reporting of live birth, fetal death, and induced termination of pregnancy.

Reporting requirements for fetal death data

Reporting requirements for fetal deaths vary by state, and these differences can have implications for comparisons of fetal and perinatal mortality rates by state [2]. Table A shows the period of gestation at which fetal death reporting is required for each reporting area for 2024. All jurisdictions require reporting of fetal deaths of at least 20 weeks of gestation or more, or a minimum of 350 grams birthweight (roughly equivalent to 20 weeks), or some combination of the two, but some require reporting at earlier gestational ages. Nine jurisdictions (Colorado, Georgia, Hawaii, New York state, New York City, Rhode Island, Virginia, American Samoa, and the U.S. Virgin Islands) require reporting of fetal deaths at all periods of gestation (although two of these do not send data for fetal deaths at less than 20 weeks to NCHS), two require reporting beginning at 12 weeks of gestation (although one of these does not send data for fetal deaths at less than 20 weeks to NCHS), and one requires reporting beginning at 16 weeks of gestation.

Change in fetal death data provided by New York City

Although New York City law continues to require the reporting of fetal deaths of all periods of gestation, beginning with the 2024 data year, only data for fetal deaths of 20 weeks of

gestation or more are provided to NCHS. As a result, while the overall count on the fetal death file will be lower than in previous years, the count for fetal deaths with a stated or presumed period of gestation of 20 weeks of gestation or more will not be impacted.

Correction to reporting requirements table for South Dakota

User Guides for the Fetal Death Public Use files for 2007-2020 (Table A) indicated that South Dakota reported fetal deaths with birthweights of 500 grams or more (approximately 22 weeks of gestation or more). Over this period and to the present, however, South Dakota has reported fetal deaths at 20 weeks of gestation or more. Note that numbers of fetal deaths in the public use fetal death file reflect the correct reporting period of 20 weeks of gestation or more.

Classification of fetal deaths at 20 weeks of gestation or greater

To maximize the comparability of data by year and by state while including as much meaningful data as possible, most tables published by NCHS are based on fetal deaths occurring at gestations of 20 weeks or more. These tabulations also include fetal deaths for which gestation is not stated for those states requiring reporting at 20 weeks of gestation or more only. Fetal deaths of not-stated gestation are excluded for states requiring reporting of all products of conception, except for those with a stated birthweight of 350 grams or more. In 2024, this rule was applied to the following reporting areas: Arkansas, Colorado, Georgia, Hawaii, New York (including New York City), Oklahoma, Pennsylvania, Rhode Island, and Virginia. American Samoa and the Virgin Islands also requiring reporting of all products of conception when data are available (see Table A). The summation of these rules results in the creation of the tabulation flag (position 10), which, when invoked, produces the number of records with a stated or presumed period of gestation of 20 weeks or more.

Data for fetal deaths occurring before 20 weeks of gestation should be used with caution, if at all, as they represent a limited, subnational reporting area and are not evaluated for data quality due to limited resources.

Classification of fetal deaths by occurrence and residence

In tabulations by place of residence, fetal deaths occurring within the United States to U.S. citizens and to residents who are not citizens are allocated to the usual place of residence of the mother in the United States, as reported on the report of fetal death. Fetal deaths to U.S. residents occurring outside this country are not included in tabulations by place of residence or place of occurrence. Accordingly, the total count of fetal deaths for the United States by place of residence and by place of occurrence will not be identical. Fetal deaths to nonresidents of the United States are included in data by place of occurrence but excluded from data by place of residence, as previously indicated. See Tables 2 and 3, respectively, for the number of fetal deaths by residence and occurrence for the 50 states and the District of Columbia for 2024.

Geographic classification: The geographic code structure for the 2024 fetal death file is given in the NCHS manual, “Vital Records Geographic Classification, 2014,” and in the country, county, and place geographic code files [4]. The geographic code structure on the 2024 file is based on results of the 2010 Census of Population.

On June 6, 2022, the U.S. Census Bureau [5] adopted the nine planning regions of Connecticut as county-equivalent geographic units for the purposes of collecting, tabulating, and disseminating statistical data, replacing the previous eight counties which had ceased to function as governmental and administrative entities in 1960. This change was implemented for all Census Bureau statistical and geospatial data products starting in 2023. The 2024 fetal death file

continued to categorize Connecticut births based on the eight counties and will categorize based on the new nine-county equivalent in future files.

Standard Report of Fetal Death

The U.S. Standard Report of Fetal Death, issued by the U.S. Department of Health and Human Services, has served for many years as the principal means for attaining uniformity in the content of the documents used to collect information on fetal deaths in the United States. The U.S. Standard Report of Fetal Death has historically been revised every 10-15 years. Most state reports conform closely in content to the standard report but are modified to the extent required by the particular state's needs or by special provisions of the state's vital statistics law.

The 2003 revision: In 2003, a revised U.S. Standard Report of Fetal Death was adopted (Figure 2). For more information on the 2003 standard report and details regarding the certificate revision and links to the documents referenced below, see the NCHS website of the 2003 report revision at http://www.cdc.gov/nchs/nvss/vital_certificate_revisions.htm. The 2003 report of fetal death replaces the previous 1989 U.S. Standard Report of Fetal Death [6,7]. Implementation of the 2003 U.S. Standard Report of Fetal Death (revised) by the states and independent reporting areas was phased in. All 50 states, the District of Columbia, Guam, Puerto Rico, the U.S. Virgin Islands, and the Northern Marianas had implemented the revised report of fetal death as of January 1, 2018. American Samoa implemented the revised report of fetal death as of January 1, 2024.

The 2003 Revision of the U.S. Standard Report of Fetal Death introduced substantial changes to data content and quality. Many key data items are common between revisions; however, a number of items were substantively modified. The 2003 revision also includes many

new items never before collected on the Standard Report [6,7]. For details on data items comparable between revisions see the User Guide to the 2013 Fetal Death Public Use File [8].

A key aspect of the 2003 revision of the U.S. Standard Report of Fetal Death was the reengineering of the data collection and transmission system to improve data quality, speed of data collection and transmission, and to enhance standardization of data [6,9]. To encourage collection of data from the best sources, two worksheets were developed: the “Patient’s Worksheet” (available at: <https://www.cdc.gov/nchs/data/dvs/patientwkstfetaldeath.pdf>) [10] and the “Facility Worksheet” (available at: <https://www.cdc.gov/nchs/data/dvs/FacilityFetal04.pdf>) [11]. For the Patient’s Worksheet, data are directly obtained from the mother and include items such as race, Hispanic origin, and educational attainment. For the Facility Worksheet, data are obtained directly from the medical records of the mother for items such as date of first prenatal care visit, pregnancy risk factors, and method of delivery. To assist hospital staff in completing the Facility Worksheet, a comprehensive instruction manual was developed: Guide to Completing the Facility Worksheets for the Certificate of Live Birth and Report of Fetal Death (2003 Revision) (“Guide to the Facility Worksheet”; available at: <https://www.cdc.gov/nchs/data/dvs/GuidetoCompleteFacilityWks.pdf>) [12]. Detailed definitions and instructions for data items that are collected from the Facility Worksheet are in the “Guide to the Facility Worksheet”.

Additionally, a review of 2003-based report of fetal death revision items in 2014 by a collaborative effort among representatives from several vital statistics jurisdictions: The National Association for Public Health Statistics and Information Systems (NAPHSIS), and NCHS, resulted in the decision to drop a number of items from the national report of fetal death data file for reasons of poor data quality. For more information on this effort and for a full list of items

that were dropped, see:

https://www.cdc.gov/nchs/nvss/deleted_items_from_birth_fetal_death_files.htm.

The first ever eLearning training, “Applying Best Practices for Reporting Medical and Health Information on Birth Certificates,” on completing the medical and health information for the birth certificate and report of fetal death was launched in October 2016 and has recently been updated. The training emphasizes the importance and uses of birth certificate and report of fetal death data and best practices for collecting specific medical and health items, including cause of fetal death. The audience for the training includes birth information specialists, physicians, nurses, and hospital administrators. Continuing education credits for nurses, physicians, and non-clinical staff are also available. The training is internet-based and approximately 45 minutes in length. It is available at: www.cdc.gov/nchs/training/BirthCertificateElearning.

Fetal death data files

Micro-data files: Fetal death micro-data files for data years 1982-2024 may be downloaded at: http://www.cdc.gov/nchs/data_access/VitalStatsOnline.htm. The general rules used to classify characteristics of fetal deaths are presented in several NCHS manuals [4, 9, 13]. These instructions are for states to use to collect and code the data items; they do not include NCHS edit recodes.

The 2003-2006 fetal death micro-data files include data items common to both the 1989 and 2003 revisions of the U.S. Standard Report of Fetal Death, as well as items exclusive to the 2003 revision. For 2007-2013, in an effort to improve the timeliness of fetal death data, the fetal death files only included items that were comparable across the 1989 and 2003 revisions of the U.S. Standard Report of Fetal Death. From 2014-2017, the fetal mortality files again included data comparable between the two revisions, as well as well as items exclusive to the 2003

revision. Beginning with 2018, the fetal death file only includes data exclusive to the 2003 revision.

The U.S. micro-data fetal death files for 2005 through 2023 do not include geographic detail (e.g., mother's state of residence). Tabulations of fetal death data by state-level geographic detail and many other demographic and health items are available in the CDC WONDER web application (<http://wonder.cdc.gov/>) for data years 2005-2023. Additionally, certain geographic level data may also be available upon request: See "NCHS Data Release and Access Policy for Micro-data and Compressed Vital Statistics Files", available at:

http://www.cdc.gov/nchs/nvss/dvs_data_release.htm.

The territories file includes data on fetal deaths occurring in Guam and Puerto Rico (data for American Samoa, the Northern Marianas, and the Virgin Islands were excluded due to small numbers). It includes limited geographical data such as information identifying individual territories and counties (or their equivalent) with populations of 100,000 or more by place of occurrence and residence.

Race of Mother

The 2003 revision of the U.S. Standard Report of Fetal Death allows the reporting of the five race categories either alone (i.e., single-race) or in combination (i.e., more than one race or multiple races) for the mother [7], in accordance with the revised standards issued by the Office of Management and Budget (OMB) in 1997 [14]. The five categories for race specified in the revised standards are: American Indian or Alaska Native (AIAN), Asian, Black or African American, Native Hawaiian or Other Pacific Islander (NHOPI), and White. Information on this change is presented elsewhere [15-17]. Starting in 2018, all states and the District of Columbia, in addition to Puerto Rico, Guam, the Northern Marianas, and the Virgin Islands, began reporting

race according to the 1997 revised OMB standards. American Samoa started reporting race data based on the revised standards in 2024.

Prior to 2018, to provide uniformity and comparability of the data before all or most of the data were available in the new multiple-race format, it was necessary to “bridge” the responses of those for whom more than one race was reported (multiple race) to one, single race. Beginning in 2018, data by race are shown according to the 1997 OMB standards. Bridged-race data are no longer available on the public use file beginning with the 2020 data year.

Hispanic Origin of Mother

Hispanic origin and race: Hispanic origin and race are reported separately on the report of fetal death (Figure 2). It is recommended that this information be reported directly by the mother via the Patient’s Worksheet [10]. For 1989 through 2018, data on the public use file and in NCHS reports for specified Hispanic groups are shown in most cases for five specified Hispanic groups: Mexican, Puerto Rican, Cuban, Central and South American, and “other and unknown Hispanic.” Starting with 2019, data are presented for the additional Hispanic group, Dominican (see item MHISPX in file position 143). This subgroup was previously included in “other and unknown Hispanic.” In tabulations of fetal death data by race and Hispanic origin, data for persons of Hispanic origin are not further classified by race because the vast majority of Hispanic women are reported as white. In tabulations of fetal death data by race only, data for persons of Hispanic origin are included in the data for each race group according to the mother’s reported race. In tabulations that include Hispanic origin, data for non-Hispanic persons are classified according to the race of the mother. American Samoa does not collect information on Hispanic origin.

Beginning in 2022, records for which mother’s detailed Hispanic origin is coded to “Latin American” are recoded to “Other and Unknown Hispanic origin” for the mother’s Hispanic origin recodes at positions 142 and 143 in the file layout. Prior to 2022, these records were recoded to “Central and South American.” This change resulted in a substantial shift in the number of women reported in these two categories, and as a result, numbers and fetal mortality rates for these two Hispanic-origin subgroups are not considered comparable across the two periods.

Cause of Death Data

A cause-of-fetal death item has been included on the report of fetal death since 1939 because it was considered critical information. However, the data were not released on public-use files or published until 2014 due to resource constraints and quality concerns. Data on cause of death are now released annually and are available for 2014-2024.

A major redesign of the cause of death (COD) section of the U.S. Standard Report of Fetal Death was undertaken with the 2003 revision. The goals of the redesign were to be consistent with instructions in the World Health Organization’s (WHO) International Classification of Diseases (ICD) [18], and to thereby improve the quality and specificity of COD information, provide additional reporting guidance, and retain the flexibility to report any cause of death [19]. Starting in 2024, all 50 states, D.C., American Samoa, Guam, Northern Marianas, Puerto Rico, and U.S. Virgin Islands reported cause of death data based on the 2003 U.S. Standard Report of Fetal Death.

As with other deaths, the intent is for an attending physician or medical examiner or coroner to report cause of death [18]. The cause-of-fetal-death item requests a medical opinion from this person on the conditions and diseases resulting in or contributing to death, but also asks

the medical certifier to report one cause separately (item 18a) from all other causes (item 18b) reported on the fetal death report. The certifier may form this medical opinion upon various medical tests, investigations, and examinations as is the case with other deaths. However, the term “initiating cause” used to refer to the one cause reported separately is unique to fetal deaths because of differences in the format of the cause item and how the initiating cause is determined for fetal deaths compared with the “underlying cause” term used with other deaths [19].

NCHS codes cause of fetal death reported by the certifier using the ICD-10 classification [18]. Coding is accomplished through a combination of automated and manual processes following the guidelines laid out in Instruction manual part 2k, Instructions for the Automated Classification of the Initiating and Multiple Causes of Fetal Deaths [20]. Literal text stated on the fetal death report is assigned ICD-10 codes, and a single cause of death, the initiating cause of death, is selected from the conditions entered by the medical certifier in the cause-of-death section of the fetal death report. One section of the report (18a) is for the medical certifier to state the single condition that he or she considers the cause that initiated or triggered problems that resulted in the fetus dying at this point in time, so this is anticipated to be the initiating cause of death. If more than one cause or condition is entered by the medical certifier, the initiating cause is determined by the placement of the condition on the report, provisions of the ICD, and associated selection rules and modifications. A second section of the report (18b) is for the medical certifier to state any other conditions or causes that he or she felt played a role in causing the fetal death. Since more medical information may be reported on the report than is directly reflected in the initiating cause of death, this additional information is captured in multiple cause-of-fetal-death data.

The fetal death data file also includes a cause of death data item for 124 Selected Causes of Fetal Death (fetal cause list) (tables 7A and 7B). The reporting area for these tables includes areas where less than 50 percent of an area's cause data were attributed to the Fetal death of unspecified cause (unspecified cause) (P95).

Incomplete national reporting: The use of reporting flags

The 2024 national fetal death file includes items that are not reported by some vital statistics jurisdictions or are reported but have an unknown level of 50% or higher and are flagged as not reporting. Reporting flags were developed to help the user more readily identify the correct number of fetal deaths for items with less than full national reporting. Reporting flags are available for many items in the file, and positions for reporting flags are noted along with each data item in the file layout.

Translating "blanks"

In the 2024 fetal death file, for data items which are not reported by all states, fetal deaths to residents of a state reporting the item that occurred in a state not reporting the item, are represented by "blanks." Blanks should be treated as "unknowns" for tabulations. In sum, the correct use of reporting flags and translation of blanks will result in an accurate tally of fetal deaths for items with incomplete national reporting. For an example of SAS code that may be used to incorporate the correct use of reporting flags and the translation of blanks, see below.

Example of SAS code using reporting flags (and translating blanks)

The example below is for the receipt of WIC item, for which data for 48 states and the District of Columbia are included for 2024 (New York City does not report this item and Colorado and Hawaii reported this item for 2024 but had unknown levels of 50% or higher and were flagged as not reporting).

Sample SAS program

```
01  DATA work;
02      INFILE 'c:fet24us.dat' LRECL=3150;
03      INPUT
04          oe_tabflg  10
05          wic $229
06          restatus 131
07          f_wic $377;
08
09      /*Include if 20 weeks gestation or more*/
10      IF oe_tabflg EQ 2;
11      /*Exclude foreign residents*/
12      IF restatus NE 4;
13      /*Select reporting area*/
14      IF f_wic=1;
15      /*Convert blanks to unknown*/
16      IF wic = ' ' THEN wic = 'U';
17
18  PROC FREQ;
19      TABLE wic;
20  RUN;
```

In this example, “oe_tabflg” is used to select fetal deaths of 20 weeks gestation or more. Also, “restatus” is used to exclude fetal deaths to foreign residents (this is standard practice for all NCHS tabulations). As well in this example, blanks are represented by character values SAS

code = (‘ ’). However, for some items in the file, e.g., number of previous cesarean deliveries, blanks are represented by numeric values for which the SAS code is (‘.’).

Quality of Data

State-Specific Data Quality Issues

These state-specific data quality issues are of concern due to potential underreporting and/or inaccurate reporting for 2024.

- Previous live births now dead – Florida, Illinois, Indiana, and Nebraska-Some records erroneously reported the current fetal death as a previous live birth now dead. Data for this item for these states should be used with caution.
- Colorado – Place of delivery – A system error resulted in some records being erroneously coded as deliveries at home. As a result, this item for this state has been flagged as not reporting and should not be used.
- New Jersey – Attendant – Certified nurse midwives were erroneously coded to the “other” category. As a result, this item for this state has been flagged as not reporting and should not be used.
- North Carolina – Pregnancy resulted from infertility treatment, Assisted reproductive technology, and Fertility enhancing drugs, artificial insemination, or intrauterine insemination – A system error resulted in incorrect reporting of these items. As a result, these items for this state have been flagged as not reporting and should not be used.

Percentage of unknown responses

Information on the completeness of reporting of fetal death (with a stated or presumed period of gestation of 20 weeks or more) data is shown in Table B, which presents a listing of items and the percentage of records that were not stated for each reporting area: all 50 states, the

District of Columbia, New York City, Puerto Rico, Guam, American Samoa, the Northern Marianas, and the Virgin Islands. In general, percentages of unknown responses are considerably higher for fetal deaths than for live births, and among fetal deaths the percentage unknown is higher for fetal deaths that occur earlier in the gestational period. In fetal mortality tables, unknown responses are shown in frequencies tables but are excluded from the computation of percent distributions and fetal and perinatal mortality rates. Thus, rates for variables with a substantial percentage of unknown responses (such as birthweight) may understate the “true” rates of fetal mortality for that characteristic.

As high levels of missing data are a data quality concern, beginning with the 2017 data year, jurisdictions with a 50% or greater unknown level for a particular item are flagged as not reporting that item.

State Specific Issues

The items below had unknown levels of 50% or higher for the jurisdiction(s) noted and are flagged as not reporting for those jurisdictions in 2024:

- Father’s age- Alabama, the District of Columbia, Georgia, New Mexico, New York, Rhode Island, Virginia, and Guam
- Date of first prenatal care-Colorado and Hawaii
- WIC-Colorado, Hawaii, and Guam
- Mother’s height-Guam
- Mother’s pre-pregnancy weight-Hawaii and Guam
- Mother’s pre-pregnancy BMI-Hawaii and Guam
- Date of last normal menses-Colorado and Hawaii

- Estimated time of fetal death-District of Columbia, Kansas, Missouri, Mississippi, Nevada, Oklahoma, Virginia, and Guam
- Cause of death- Arizona, Georgia, Michigan, Mississippi, Nevada, New York City, North Dakota, and Oregon

Change in items reported by New York state

Due to reinterpretation of state law, as of September 2022, New York state no longer reports data on the following items to NCHS:

- Mother's date of birth
- City of residence
- Inside city limits
- Father's date of birth
- Match number

In order to help data users generate correct counts, additional reporting flags have been added where appropriate. Note: For 2022 and 2023, New York state also stopped reporting day of delivery, which necessitated the development of a new imputation method to assign a value for this data item [21]. However, beginning with the 2024 data year, New York state began reporting this item again and the special imputation for day of delivery is no longer being applied.

Computation of rates and percentages

Fetal mortality rates are computed as the number of fetal deaths at 20 weeks of gestation or more per 1,000 live births and fetal deaths at 20 weeks or more. Perinatal mortality rates are computed in a similar fashion, as shown below. The denominators for all fetal and perinatal mortality rates are live births plus fetal deaths in the specified gestational age group, thus representing the population at risk of the event [2].

Fetal mortality rate = $\frac{\text{Fetal deaths at 20 weeks of gestation or more}}{\text{Live births and fetal deaths at 20 weeks or more}} \times 1,000$

Perinatal mortality rate, definition I =

$\frac{\text{Fetal deaths at 28 weeks or more and infant deaths under 7 days}}{\text{Live births and fetal deaths at 28 weeks or more}} \times 1,000$

Perinatal mortality rate, definition II =

$\frac{\text{Fetal deaths at 20 weeks or more and infant deaths under 28 days}}{\text{Live births and fetal deaths at 20 weeks or more}} \times 1,000$

Perinatal mortality rate, definition III =

$\frac{\text{Fetal deaths at 20 weeks or more and infant deaths under 7 days}}{\text{Live births and fetal deaths at 20 weeks or more}} \times 1,000$

In each case, the fetal deaths included in the denominator of each rate mirror the fetal deaths included in the numerator. A previous NCHS report [22] contains information on the historical development of various perinatal measures.

Beginning with the 2023 data year, the National Center for Health Statistics transitioned to the use of Definition III as the primary measure of perinatal mortality. Prior to this time, Definition I was used as the primary measure. This change was made due to modifications in jurisdictional reporting requirements that resulted in national reporting of all fetal deaths at 20

weeks of gestation or more as of 2014, allowing for the use of Definition III, which more fully represents the perinatal events most likely to be affected by similar factors (23).

Presentation of numbers, rates, and percentages

An asterisk (*) indicates that the figure does not meet NCHS standards of reliability or precision. Three separate criteria are used to determine whether a figure – either the number of events, a rate, or proportion – meets these standards. New criteria for showing the number of events and rates were adopted by NCHS beginning with the 2023 data [24]. Rates published for data years prior to 2023 were represented by an asterisk when the numerator was fewer than 20 deaths; the number of deaths was shown regardless of the count. Beginning with 2023 data, whether the number of deaths or births is shown depends on the count of deaths or births and on the relative width of the confidence interval of the count, based on a gamma distribution (this rule is not implemented for documentation tables in the user guide). For rates, whether a rate is shown depends on the count for the numerator and on the relative width of the confidence interval of the rate based on a Student's t interval for the logarithm of the rate (applicable to the user guide and all reports). For detailed information on the new criteria, see “National Center for Health Statistics Data Presentation Standards for Rates and Counts” [24].

For a proportion (or percentage), new criteria were adopted by NCHS beginning with 2017 data but were only implemented for fetal deaths starting with 2023 data [25]. For proportions or percentages published prior to the 2023 data year, an asterisk was shown in place of a proportion or percentage based on fewer than 20 deaths in the numerator. For 2023 and later, whether a proportion (percentage) is shown is based on denominator size and on the absolute or relative widths of the confidence interval of the proportion or percentage calculated using the Clopper–Pearson method. Starting in 2023, an additional criterion was added: proportions or

percentages based on fewer than 10 deaths in the numerator are represented with an asterisk. For detailed information on these criteria, see “National Center for Health Statistics Data Presentation Standards for Proportions” [25].

Random variation in fetal and perinatal mortality

The number of fetal deaths, perinatal deaths, and live births reported for an area represent complete counts of such events. As such, they are not subject to sampling error, although they are subject to nonsampling error in the registration process. However, when the figures are used for analytic purposes, such as the comparison of rates over time, for different areas, or among different subgroups, the number of events that actually occurred may be considered as one of a large series of possible results that could have arisen under the same circumstances [26]. As a result, numbers of births, fetal deaths, perinatal deaths, and fetal and perinatal mortality rates are subject to random variation. The probable range of values may be estimated from the actual figures according to certain statistical assumptions.

In general, distributions of vital events may be assumed to follow the normal distribution. When the number of events is large, the relative standard error (RSE) is usually small. When the number of events is small (perhaps less than 100) and the probability of such an event is small, considerable caution must be used in interpreting the data. Such infrequent events may be assumed to follow a Poisson probability distribution. Estimates of RSEs and 95% confidence intervals are shown below. In the formulas, D is the number of fetal or perinatal deaths and B is the number of live births plus fetal deaths used as the denominator in computing fetal and perinatal mortality rates.

The formulas for the two RSEs are as follows:

$$\text{RSE}(D)=100*\sqrt{\frac{1}{D}} \text{ and}$$

$$\text{RSE}(B)=100*\sqrt{\frac{1}{B}} .$$

For example, let us say that for group A the number of fetal deaths was 238, whereas the number of live births plus fetal deaths in the denominator was 32,650 yielding a fetal mortality rate of 7.29 fetal deaths per 1,000 live births and fetal deaths.

$$\text{The RSE of the deaths} = 100*\sqrt{\frac{1}{238}} = 6.48,$$

whereas the RSE for the births plus fetal deaths in the denominator is

$$\text{RSE} = 100*\sqrt{\frac{1}{32,650}} = 0.55.$$

The formula for the RSE of the fetal mortality rate is:

$$\text{RSE} = 100*\sqrt{\frac{1}{D} + \frac{1}{B}}$$

Thus the RSE for the example above is:

$$= 100*\sqrt{\frac{1}{238} + \frac{1}{32,650}} = 6.51.$$

Normal distribution

When the number of events is greater than 100, the normal distribution is used to estimate the 95 percent confidence intervals of a rate, R_I , as follows:

$$\text{Lower: } R_I - 1.96 * R_I * \frac{\text{RSE}(R_I)}{100}$$

$$\text{Upper: } R_I + 1.96 * R_I * \frac{\text{RSE}(R_I)}{100}$$

Thus, for Group A:

$$\text{Lower: } 7.29 - (1.96 * 7.29 * \frac{6.51}{100}) = 6.36$$

$$\text{Upper: } 7.29 + (1.96 * 7.29 * \frac{6.51}{100}) = 8.22$$

Thus the chances are 95 out of 100 that the true fetal or perinatal mortality rate for Group A lies somewhere in the 6.36–8.22 interval.

Poisson distribution

When the number of events in the numerator is less than 100 the confidence interval for the rate, R_I , can be estimated based on the Poisson distribution using the values in Table III (2).

$$\text{Lower: } R_I * L(.95, D_{\text{adj}})$$

$$\text{Upper: } R_I * U(.95, D_{\text{adj}})$$

where D_{adj} is the adjusted number of fetal or perinatal deaths (rounded to the nearest integer) used to take into account the RSE of the number of deaths in the numerator and the number of live births plus fetal deaths in the denominator, and is computed as follows:

$$D_{\text{adj}} = \frac{D * B}{D + B}$$

$L(.95, D_{\text{adj}})$ and $U(.95, D_{\text{adj}})$ refer to the values in Table III corresponding to the value of D_{adj} .

For example, let us say that for Group B the number of fetal deaths was 73, and the number of live births plus fetal deaths in the denominator was 11,422, and the fetal mortality rate was 6.39.

$$D_{\text{adj}} = \frac{73 * 11,422}{73 + 11,422} = 73$$

Therefore the 95 percent confidence interval (using the formula in Table III for 1\N99 infant deaths) =

$$\text{Lower: } 6.39 * 0.78384 = 5.01$$

$$\text{Upper: } 6.39 * 1.25735 = 8.03$$

Comparison of two fetal or perinatal mortality rates

If either of the two rates to be compared is based on less than 100 deaths, compute the confidence intervals for both rates and check to see if they overlap. If so, the difference is not statistically significant at the 95 percent level. If they do not overlap, the difference is statistically significant. If both of the two rates (R_1 and R_2) to be compared are based on 100 or more deaths, the following z-test should be used to define a significance test statistic:

$$z = \frac{R_1 - R_2}{\sqrt{R_1^2 \left(\frac{RSE(R_1)}{100} \right)^2 + R_2^2 \left(\frac{RSE(R_2)}{100} \right)^2}}$$

If $|z| \geq 1.96$, then the difference is statistically significant at the 0.05 level and if $|z| < 1.96$, the difference is not significant.

References

1. National Center for Health Statistics. Fetal Death 2024. Public use file. Hyattsville, Maryland: National Center for Health Statistics. Annual internet product. 2026. Available at: http://www.cdc.gov/nchs/data_access/VitalStatsOnline.htm.
2. MacDorman MF, Gregory ECW. Fetal and perinatal mortality: United States, 2013. National vital statistics reports; vol 64 no 8. Hyattsville, MD: National Center for Health Statistics. 2015.
3. Kowaleski J. State definitions and reporting requirements for live births, fetal deaths, and induced terminations of pregnancy (1997 revision). Hyattsville, MD: National Center for Health Statistics. 1997. Available from: <http://www.cdc.gov/nchs/data/misc/itop97.pdf>.
4. Division of Vital Statistics. Instruction manual part 8: Geographic classification, 2014. Hyattsville, Maryland: National Center for Health Statistics. Available at: https://www.cdc.gov/nchs/data/dvs/IMP8_2014.pdf.
5. Department of Commerce. Change to County-Equivalents in the State of Connecticut. Fed Regist 87(108):34235–40. 2022. Available from: <https://www.govinfo.gov/content/pkg/FR-2022-06-06/pdf/2022-12063.pdf>.
6. National Center for Health Statistics. Report of the Panel to Evaluate the U.S. Standard Certificates. Hyattsville, Maryland: National Center for Health Statistics. 2000.
7. National Center for Health Statistics. 2003 revision of the U.S. Standard Report of Fetal Death. 2003.
8. National Center for Health Statistics. User Guide to the 2013 Fetal death Public Use File. Hyattsville, Maryland: National Center for Health Statistics. Annual product 2015. Available at: http://www.cdc.gov/nchs/data_access/VitalStatsOnline.htm.

9. National Center for Health Statistics. Fetal death edit specifications for the 2003 Revision of the U.S. Standard Certificate of Birth. 2012.

https://www.cdc.gov/nchs/data/dvs/fetal_death_edit_specifications.pdf.

10. National Center for Health Statistics. Patient's Worksheet for Report of Fetal Death.

2019. Available at: <https://www.cdc.gov/nchs/data/dvs/fetal-death-mother-worksheet-english-2019-508.pdf>.

11. National Center for Health Statistics. Facility Worksheet for Report of Fetal Death. 2019.

Available at: <https://www.cdc.gov/nchs/data/dvs/fetal-death-facility-worksheet-2019-508.pdf>.

12. National Center for Health Statistics. Guide to completing the facility worksheets for the Certificate of Live Birth and Report of Fetal Death (2003 revision). 2019 update. Hyattsville, Maryland: National Center for Health Statistics.

<https://www.cdc.gov/nchs/data/dvs/GuidetoCompleteFacilityWks.pdf>.

13. Division of Vital Statistics. Computer edits fetal death data --2003 Revised Certificate. Hyattsville, Maryland: National Center for Health Statistics.

14. Office of Management and Budget. Revisions to the standards for the classification of federal data on race and ethnicity. Fed Regist 62FR58781–58790. October 30, 1997.

15. Ingram DD, Parker JD, Schenker N, et al. United States Census 2000 population with bridged race categories. National Center for Health Statistics. Vital Health Stat 2(135). 2003.

16. Johnson D. Coding and editing multiple race. Presented at the 2004 Joint Meeting of NAPHSIS and VSCP. Portland, Oregon. June 6–10, 2004.

17. Weed JA. NCHS procedures for multiple-race and Hispanic origin data: Collection, coding, editing, and transmitting. Presented at the 2004 Joint Meeting of NAPHSIS and VSCP. Portland, Oregon. June 6–10, 2004.

18. World Health Organization. International statistical classification of diseases and related health problems, 10th revision. Geneva, Switzerland. 2009.
19. Hoyert DL, Gregory ECW. Cause-of-death data from the fetal death file, 2015–2017. National Vital Statistics Reports; vol 69 no 4. Hyattsville, MD: National Center for Health Statistics. 2020.
20. National Center for Health Statistics. Instruction manual, part 2k: Instructions for the automated classification of the initiating and multiple causes of fetal deaths, 2014. Hyattsville, MD. 2014.
21. National Center for Health Statistics. User Guide to the 2023 Fetal death Public Use File. Hyattsville, Maryland: National Center for Health Statistics. Annual product 2024. Available at: http://www.cdc.gov/nchs/data_access/VitalStatsOnline.htm.
22. Hoyert DL. Perinatal mortality in the United States, 1985–91. National Center for Health Statistics. Vital Health Stat 20(26). 1995. Available from: http://www.cdc.gov/nchs/data/series/sr_20/sr20_026.pdf.
23. Gregory ECW, Valenzuela CP, Hoyert DL, Martin JA. Change in the primary measure of perinatal mortality for vital statistics. Natl Vital Stat Rep. 2025 Jun;74(5):1–10.
24. Parker JD, Talih M, Irimata KE, Zhang G, Branum AM, Davis D, et al. National Center for Health Statistics data presentation standards for rates and counts. National Center for Health Statistics. Vital Health Stat 2(200). 2023. Available at: https://www.cdc.gov/nchs/data/series/sr_02/sr02-200.pdf
25. Parker JD, Talih M, Malec DJ, et al. National Center for Health Statistics data presentation standards for proportions. National Center for Health Statistics. Vital Health Stat 2(175). 2017. Available from: https://www.cdc.gov/nchs/data/series/sr_02/sr02_175.pdf.

26. Brillinger DR. The natural variability of vital rates and associated statistics. *Biometrics* 42(4):693–734. 1986.

Control Count of Records

File Characteristics: Fetal Public Use File 2024

All files:

Record format: Blocked, Fixed, Format
Code scheme: Numeric/Alphabetic/Blank
Record length: 3150

Record counts

U.S. file record count:

Counts of all fetal deaths:

Record count	35,648
By occurrence	35,648
By residence	35,526
To foreign residents	122

Counts of 20 weeks or more:

Record count	19,952
By occurrence	19,952
By residence	19,837
To foreign residents	115

Counts of less than 20 weeks:

Record count	15,696
By occurrence	15,696
By residence	15,689
To foreign residents	7

U.S. territories file record count:

Counts of all fetal deaths:

Record count	239
By occurrence	239
By residence	237
To foreign residents	2

Counts of 20 weeks or more:

Record count	239
By occurrence	239
By residence	237
To foreign residents	2

Counts of less than 20 weeks:

Record count	-
By occurrence	-
By residence	-
To foreign residents	-

2024 LIST OF DATA ELEMENTS AND LOCATIONS

<u>Data Items</u>	<u>Locations</u>
1. General	
a) Tabulation flags (gestational age)	10
b) Data year	11-14
c) Resident status	131
2. Prenatal Care	
a) Month began	202-203
3. Fetus	
a) Sex	316
b) Plurality	301
c) Weight at delivery	349-355
d) Gestational age	340-344(NCHS Standard item), 331-335
e) Month/year of delivery	11-16
f) Time of delivery	21-24
g) Day of week of delivery	25
4. Mother	
a) Age	86-90
b) Race	132-136
c) Education	145
d) Hispanic origin	142-144
5. Pregnancy History	
a) Live birth order	187
b) Birth interval	197-201
6. Father	
a) Age	177-180
7. Other Items	
a) Attendant at delivery	283
b) Place of delivery	34, 52
c) WIC receipt	229
8. Medical and Health Data	
a) Method of delivery	274-277, 280
b) Medical risk factors	257-267
c) Other risk factors	
i. Tobacco	230-238
ii. Mother's pre-pregnancy body mass index (BMI)	245-249
d) Maternal morbidity	281-282
9. Residence reporting flags	372-445

10. Cause of Death

- | | |
|--|-----------|
| a.) Initiating cause or condition code | 2603-2607 |
| b.) Initiating cause or condition recode | 2643-2645 |
| c.) Initiating cause or condition flag | 2651 |

**2024 Fetal Death
Public Use Record Layout**

Position	Len	Field	Description	Reporting Flag Position	Vers*	Values	Definition
1-6	6	FILLER					
7	1	VERSION	Version		A,S	A S	State used the 2003 version of the US Standard Report of Fetal Death (Revised) State used the 1989 version of the US Standard Report of Fetal Death (Unrevised)
8-9	2	FILLER					
10	1	OE_TABFLG	Obstetric Estimate Tabulation Flag (Use with NCHS Standard item)		A,S	1 2	Under 20 weeks (exclude) 20 weeks or more (include)
11-14	4	DOD_YY	Delivery Year		A,S	2014	Year of delivery
15-16	2	DOD_MM	Delivery Month		A,S	01 02 03 04 05 06 07 08 09 10 11 12	January February March April May June July August September October November December
17-20	4	FILLER					
21-24	4	DOD_TT	Delivery Time	c372	A	0000-2359 9999	Time of Birth Not Stated
25	1	DOD_WK	Weekday		A,S	1 2 3	Sunday Monday Tuesday

* For the Version column (Vers) the following codes apply:

A 2003 Version of US Standard Birth Certificate

S 1989 Version of US Standard Birth Certificate

s 1989 Version of US Standard Birth Certificate but this element conforms to the 2003 standards

Position	Len	Field	Description	Reporting Flag Position	Vers*	Values	Definition
						4	Wednesday
						5	Thursday
						6	Friday
						7	Saturday
26-27	2	OSTATE	Territory of Occurrence <i>(This item is available in the territory file only, geographic codes are not available in the U.S. file)</i>		A,S		
			<u>Territories</u>			AS	American Samoa
						GU	Guam
						MP	Northern Marianas
						PR	Puerto Rico
						VI	Virgin Islands
28-29	2	FILLER					
30-32	3	OCNTYFIPS	Occurrence FIPS County <i>(This item is available in the territory file only, geographic codes are not available in the U.S. file) Data are suppressed if population < 100,000</i>		A,S		
						000	No county level geography
						001-998	County of Occurrence (See Geographic Table)
						999	County of less than 100,000
33	1	OCNTYPOP	Occurrence Territory County Population <i>(This item is available in the territory file only, geographic codes are not available in the U.S. file)</i>		A,S		
						0	County of 1,000,000 or more
						1	County of 500,000 to 1,000,000
						2	County of 250,000 to 500,000
						3	County of 100,000 to 250,000

* For the Version column (Vers) the following codes apply:

A 2003 Version of US Standard Birth Certificate

S 1989 Version of US Standard Birth Certificate

s 1989 Version of US Standard Birth Certificate but this element conforms to the 2003 standards

Position	Len	Field	Description	Reporting Flag Position	Vers*	Values	Definition
						9	County less than 100,000
34	1	BFACIL	Delivery Place (Revised)	409	A	1 2 3 4 5 6 7 9	Hospital Freestanding Birth Center Home (intended) Home (not intended) Home (unknown if intended) Clinic/Doctor's Office Other Unknown
35-51	17	FILLER					
52	1	BFACIL3	Delivery Place Recode	409	A,S	1 2 3	In Hospital Not in Hospital Unknown/not stated
53-83	31	FILLER					
84	1	MAGE_IMPFLG	Mother's Age Imputed		A,S	Blank 1	Age not imputed Age imputed
85	1	MAGE_REPFLG	Reported Age of Mother Flag		A,S	Blank 1	Reported age not used Reported age used
86-87	2	MAGER	Mother's Single Year of Age	432	A,S	12 13 14 15 16	12 years and under 13 years 14 years 15 years 16 years

* For the Version column (Vers) the following codes apply:

A 2003 Version of US Standard Birth Certificate

S 1989 Version of US Standard Birth Certificate

s 1989 Version of US Standard Birth Certificate but this element conforms to the 2003 standards

Position	Len	Field	Description	Reporting Flag Position	Vers*	Values	Definition
						17	17 years
						18	18 years
						19	19 years
						20	20 years
						21	21 years
						22	22 years
						23	23 years
						24	24 years
						25	25 years
						26	26 years
						27	27 years
						28	28 years
						29	29 years
						30	30 years
						31	31 years
						32	32 years
						33	33 years
						34	34 years
						35	35 years
						36	36 years
						37	37 years
						38	38 years
						39	39 years
						40	40 years
						41	41 years
						42	42 years
						43	43 years
						44	44 years
						45	45 years
						46	46 years
						47	47 years
						48	48 years
						49	49 years
						50	50 years and over
88-89	2	MAGER14	Mother's Age Recode 14	432	A,S	01	Under 15 Years
						03	15 years
						04	16 years
						05	17 years
						06	18 years
						07	19 years

* For the Version column (Vers) the following codes apply:

A 2003 Version of US Standard Birth Certificate

S 1989 Version of US Standard Birth Certificate

s 1989 Version of US Standard Birth Certificate but this element conforms to the 2003 standards

Position	Len	Field	Description	Reporting Flag Position	Vers*	Values	Definition
						08	20-24 years
						09	25-29 years
						10	30-34 years
						11	35-39 years
						12	40-44 years
						13	45-49 years
						14	50-54 years
90	1	MAGER9	Mother's Age Recode 9	432	A,S	1	Under 15 years
						2	15-19 years
						3	20-24 years
						4	25-29 years
						5	30-34 years
						6	35-39 years
						7	40-44 years
						8	45-49 years
						9	50-54 years
91-92	2	MBCNTRY	Mother's Birth Country c372 <i>(This item is available in the territory file only, geographic codes are not available in the U.S. file)</i>		A	AA-ZZ	See Geographic Documentation
93-96	4	FILLER					
97	1	MBSTATE_REC	Mother's Birth State Recode c372		A	1	Native born (50 U.S. States)
						2	Foreign born (includes territories)
						3	Unknown or Not Stated
98-101	4	FILLER					
102-103	2	MRSTATEPSTL	Mother's Residence Postal State <i>(This item is available in the territory file only, geographic codes are not available in the U.S. file)</i>		A,S		
			<u>United States</u>			AK	Alaska
						AL	Alabama
						AR	Arkansas

* For the Version column (Vers) the following codes apply:

A 2003 Version of US Standard Birth Certificate

S 1989 Version of US Standard Birth Certificate

s 1989 Version of US Standard Birth Certificate but this element conforms to the 2003 standards

Position	Len	Field	Description	Reporting Flag Position	Vers*	Values	Definition
						AZ	Arizona
						CA	California
						CO	Colorado
						CT	Connecticut
						DE	Delaware
						DC	District of Columbia
						FL	Florida
						GA	Georgia
						HI	Hawaii
						ID	Idaho
						IL	Illinois
						IN	Indiana
						IA	Iowa
						KS	Kansas
						KY	Kentucky
						LA	Louisiana
						MA	Massachusetts
						MD	Maryland
						ME	Maine
						MI	Michigan
						MN	Minnesota
						MO	Missouri
						MS	Mississippi
						MT	Montana
						NC	North Carolina
						ND	North Dakota
						NE	Nebraska
						NH	New Hampshire
						NJ	New Jersey
						NM	New Mexico
						NV	Nevada
						NY	New York
						OH	Ohio
						OK	Oklahoma
						OR	Oregon
						PA	Pennsylvania
						RI	Rhode Island
						SC	South Carolina
						SD	South Dakota
						TN	Tennessee
						TX	Texas

* For the Version column (Vers) the following codes apply:

- A 2003 Version of US Standard Birth Certificate
- S 1989 Version of US Standard Birth Certificate
- s 1989 Version of US Standard Birth Certificate but this element conforms to the 2003 standards

Position	Len	Field	Description	Reporting Flag Position	Vers*	Values	Definition
						UT	Utah
						VA	Virginia
						VT	Vermont
						WA	Washington
						WI	Wisconsin
						WV	West Virginia
						WY	Wyoming
			<u>Territories</u>			AS	American Samoa
						GU	Guam
						MP	Northern Marianas
						PR	Puerto Rico
						VI	Virgin Islands
			<u>Canadian Provinces</u>			AB	Alberta
						BC	British Columbia
						MB	Manitoba
						NB	New Brunswick
						NL	Newfoundland and Labrador
						NT	Northwest Territories
						NS	Nova Scotia
						NU	Nunavut
						ON	Ontario
						PE	Prince Edward Island
						QC	Quebec
						SK	Saskatchewan
						YT	Yukon Territory
			<u>Foreign</u>			XX	Foreign (Rest of world)
						ZZ	Not Classifiable
104-106	3	MRCNTYFIPS	Mother's FIPS County of Residence A,s <i>(This item is available in the territory file only, geographic codes are not available in the U.S. file) Data are suppressed if population < 100,000</i>			000	No county level geography
						001-998	County of residence (See Geographic Table)

* For the Version column (Vers) the following codes apply:

A 2003 Version of US Standard Birth Certificate

S 1989 Version of US Standard Birth Certificate

s 1989 Version of US Standard Birth Certificate but this element conforms to the 2003 standards

Position	Len	Field	Description	Reporting Flag Position	Vers*	Values	Definition
						999	County of less than 100,000
107-111	5	FILLER					
112	1	RCNTY_POP	Population of Residence County <i>(This item is available in the territory file only, geographic codes are not available in the U.S. file)</i>		A,S	0 1 2 3 9 Z	County of 1,000,000 or more County of 500,000 to 1,000,000 County of 250,000 to 500,000 County of 100,000 to 250,000 County less than 100,000 Foreign resident
113-129	17	FILLER					
130	1	RECTYPE	Record Type <i>(This item is available in the territory file only, geographic codes are not available in the U.S. file)</i>		A,S	1 2	RESIDENT: State and county of occurrence and residence are the same. NONRESIDENT: State and county of occurrence and residence are different.
131	1	RESTATUS	Residence Status <u>United States</u>		A,S	1 2 3 4	RESIDENT: State and county of occurrence and residence are the same. INTRASTATE NONRESIDENT: State of occurrence and residence are the same but county is different. INTERSTATE NONRESIDENT: State of occurrence and residence are different but both are one of the 50 US states or District of Columbia. FOREIGN RESIDENT: The state of residence is not one of the 50 US states or District of Columbia.
			<u>Territories</u>			1	RESIDENT: State and county of occurrence and residence

* For the Version column (Vers) the following codes apply:

A 2003 Version of US Standard Birth Certificate

S 1989 Version of US Standard Birth Certificate

s 1989 Version of US Standard Birth Certificate but this element conforms to the 2003 standards

Position	Len	Field	Description	Reporting Flag Position	Vers*	Values	Definition
							are the same. (Unique to Guam, all US residents are considered residents of Guam and thus are assigned 1.)
						2	INTRATERRITORY NONRESIDENT: Territory of occurrence and residence are the same but county is different.
						3	INTERTERRITORY RESIDENT: Territory of occurrence and residence are different but both are US Territories.
						4	FOREIGN RESIDENT: The residence is not a US Territory.
132-133	2	MRACE31	Mother's Race Recode 31	425	A		
						01	White (alone)
						02	Black (alone)
						03	AIAN (American Indian or Alaskan Native) (alone)
						04	Asian (alone)
						05	NHOPI (Native Hawaiian or Other Pacific Islander) (alone)
						06	Black And White
						07	Black and AIAN
						08	Black and Asian
						09	Black and NHOPI
						10	AIAN and White
						11	AIAN and Asian
						12	AIAN and NHOPI
						13	Asian and White
						14	Asian and NHOPI
						15	NHOPI and White
						16	Black, AIAN, and White
						17	Black, AIAN, and Asian
						18	Black, AIAN, and NHOPI
						19	Black, Asian, and White
						20	Black, Asian, and NHOPI
						21	Black, NHOPI, and White
						22	AIAN, Asian, and White
						23	AIAN, NHOPI, and White
						24	AIAN, Asian, and NHOPI
						25	Asian, NHOPI, and White
						26	Black, AIAN, Asian, and White
						27	Black, AIAN, Asian, and NHOPI
						28	Black, AIAN, NHOPI, and White
						29	Black, Asian, NHOPI, and White
						30	AIAN, Asian, NHOPI, and White
						31	Black, AIAN, Asian, NHOPI, and White

* For the Version column (Vers) the following codes apply:

A 2003 Version of US Standard Birth Certificate

S 1989 Version of US Standard Birth Certificate

s 1989 Version of US Standard Birth Certificate but this element conforms to the 2003 standards

Position	Len	Field	Description	Reporting Flag Position	Vers*	Values	Definition
134	1	MRACE6	Mother's Race Recode 6	425	A	1 2 3 4 5 6	White (alone) Black (alone) AIAN (alone) Asian (alone) NHOPI (alone) More than one race
135-136	2	MRACE15	Mother's Race Recode 15	425	A	01 02 03 04 05 06 07 08 09 10 11 12 13 14 15	White (alone) Black (alone) AIAN (alone) Asian Indian (alone) Chinese (alone) Filipino (alone) Japanese (alone) Korean (alone) Vietnamese (alone) Other Asian (alone) Hawaiian (alone) Guamanian (alone) Samoan (alone) Other Pacific Islander (alone) More than one race
137	1	FILLER					
138	1	MRACEIMP	Mother's Race Imputed		A,S	Blank 1 2	Mother's race not imputed Unknown race imputed All other races, formerly coded 09, imputed.
139-141	3	FILLER					
142	1	UMHISP	Mother's Hispanic Origin	424	A,S	0	Non-Hispanic

* For the Version column (Vers) the following codes apply:

A 2003 Version of US Standard Birth Certificate

S 1989 Version of US Standard Birth Certificate

s 1989 Version of US Standard Birth Certificate but this element conforms to the 2003 standards

Position	Len	Field	Description	Reporting Flag Position	Vers*	Values	Definition
						1	Mexican
						2	Puerto Rican
						3	Cuban
						4	Central or South American
						5	Other and Unknown Hispanic
						9	Origin unknown or not stated
143	1	MHISPX	Mother's Hispanic Origin			0	Non-Hispanic
						1	Mexican
						2	Puerto Rican
						3	Cuban
						4	Central or South American
						5	Dominican
						6	Other and Unknown Hispanic
						9	Origin unknown or not stated
144	1	SR_MRACEHISP	Mother's Race/Hispanic Origin	c425	A	1	Non-Hispanic White (alone)
						2	Non-Hispanic Black (alone)
						3	Non-Hispanic AIAN (alone)
						4	Non-Hispanic Asian (alone)
						5	Non-Hispanic NHOPI (alone)
						6	Non-Hispanic more than one race
						7	Hispanic
						8	Origin unknown or not stated
145	1	MEDUC	Mother's Educ-Revised	372	A	1	8 th grade or less
						2	9 th through 12 th grade with no diploma
						3	High school graduate or GED completed
						4	Some college credit, but not a degree
						5	Associate degree (AA, AS)
						6	Bachelor's degree (BA, AB, BS)
						7	Master's degree (MA, MS, MEng, Med, MSW, MBA)
						8	Doctorate (PhD, EdD) or Professional degree (MD, DDS, DVM, LLB, JD)
						9	Unknown
146-171	26	FILLER					

* For the Version column (Vers) the following codes apply:

A 2003 Version of US Standard Birth Certificate

S 1989 Version of US Standard Birth Certificate

s 1989 Version of US Standard Birth Certificate but this element conforms to the 2003 standards

Position	Len	Field	Description	Reporting Flag Position	Vers*	Values	Definition
172	1	FAGERPT_FLG	Father's Reported Age Used		A,S	Blank 1	Father's reported age not used Father's reported age used
173-176	4	FILLER					
177-178	2	FAGECOMB	Father's Combined Age	426	A,S	09-98 99	Father's combined age in years Unknown or not stated
179-180	2	FAGEREC11	Father's Age Recode 11	426	A,S	01 02 03 04 05 06 07 08 09 10 11	Under 15 years 15-19 years 20-24 years 25-29 years 30-34 years 35-39 years 40-44 years 45-49 years 50-54 years 55-98 years Not stated
181-182	2	PRIORLIVE	Prior Births Now Living	440	A,S	00-30 99	Number of children still living from previous live births. Unknown or not stated
183-184	2	PRIORDEAD	Prior Births Now Dead	441	A,S	00-30 99	Number of children dead from previous live births. Unknown or not stated
185-186	2	FILLER					
187	1	LBO_REC	Live Birth Order Recode	441	A,S	0-7 8 9	Number of live birth order. 8 or more live births Unknown or not stated

* For the Version column (Vers) the following codes apply:

A 2003 Version of US Standard Birth Certificate

S 1989 Version of US Standard Birth Certificate

s 1989 Version of US Standard Birth Certificate but this element conforms to the 2003 standards

Position	Len	Field	Description	Reporting Flag Position	Vers*	Values	Definition
188-196	9	FILLER					
197-199	3	ILLB_R	Interval Since Last Live Birth Recode	427	A	000-003 004-300 888 999	Plural delivery Months since last live birth Not applicable Unknown or not stated
200-201	2	ILLB_R11	Interval Since Last Live Birth Recode 11	427	A	00 01 02 03 04 05 06 07 08 88 99	Zero to 3 months (plural delivery) 4 to 11 months 12 to 17 months 18 to 23 months 24 to 35 months 36 to 47 months 48 to 59 months 60 to 71 months 72 months and over Not applicable Unknown or not stated
202-203	2	PRECARE	Month Prenatal Care Began (Revised)	403	A	00 01-10 99	No prenatal care Month prenatal care began Unknown or not stated
204	1	PRECARE_REC	Month Prenatal Care Began Recode (Revised)	403	A	1 2 3 4 5	1 st to 3 rd month 4 th to 6 th month 7 th to final month No prenatal care Unknown or not stated
205-228	24	FILLER					
229	1	WIC	WIC	377	A	Y N	Yes No

* For the Version column (Vers) the following codes apply:

A 2003 Version of US Standard Birth Certificate

S 1989 Version of US Standard Birth Certificate

s 1989 Version of US Standard Birth Certificate but this element conforms to the 2003 standards

Position	Len	Field	Description	Reporting Flag Position	Vers*	Values	Definition
						U	Unknown or not stated
230-231	2	CIG_0	Cigarettes Before Pregnancy	405	A	00-97 98 99	Number of cigarettes daily 98 or more cigarettes daily Unknown or not stated
232-233	2	CIG_1	Cigarettes 1st Trimester	406	A	00-97 98 99	Number of cigarettes daily 98 or more cigarettes daily Unknown or not stated
234-235	2	CIG_2	Cigarettes 2nd Trimester	407	A	00-97 98 99	Number of cigarettes daily 98 or more cigarettes daily Unknown or not stated
236-237	2	CIG_3	Cigarettes 3rd Trimester	408	A	00-97 98 99	Number of cigarettes daily 98 or more cigarettes daily Unknown or not stated
238	1	CIG_REC	Cigarette Recode (Revised)	374	A	Y N U	Yes No Unknown or not stated
239-242	4	FILLER					
243-244	2	M_Ht_In	Mother's Height in Inches	375	A	30-78 99	Height in inches Unknown or not stated
245-248	4	BMI	BMI (prepregnancy)	445	A	13.0-69.9 99.9	Body Mass Index Unknown or not stated
249	1	BMI_R	Body Mass Index Recode (prepregnancy)	445	A	1 2 3 4	Underweight <18.5 Normal 18.5-24.9 Overweight 25.0-29.9 Obesity I 30.0-34.9

* For the Version column (Vers) the following codes apply:

A 2003 Version of US Standard Birth Certificate

S 1989 Version of US Standard Birth Certificate

s 1989 Version of US Standard Birth Certificate but this element conforms to the 2003 standards

Position	Len	Field	Description	Reporting Flag Position	Vers*	Values	Definition
						5	Obesity II 35.0-39.9
						6	Extreme Obesity III ≥ 40.0
						9	Unknown or not stated
250-252	3	FILLER					
253-255	3	PWgt_R	Prepregnancy Weight Recode	376	A	075-375 999	Weight in pounds Unknown or not stated
256	1	FILLER					
257-262	6	<u>Risk Factors (Revised)</u>			A		
			The checkbox items indented below follow this code structure:				Y Yes N No U Unknown or not stated
257	1	RF_DIAB	Prepregnancy Diabetes	378			
258	1	RF_GEST	Gestational Diabetes	379			
259	1	RF_PHYP	Prepregnancy Hypertension	380			
260	1	RF_GHYP	Gestational Hypertension	381			
261	1	RF_ECLAM	Hypertension Eclampsia	382			
262	1	RF_INFTR	Infertility Treatment	383			
263	1	RF_FEDRG	Fertility Enhancing Drugs	384	A	Y Yes N No X Not applicable U Unknown or not stated	
264	1	RF_ARTEC	Asst. Reproductive Technology	385	A	Y Yes N No X Not applicable U Unknown	
265	1	RF_CESAR	Previous Cesareans	386	A	Y Yes N No U Unknown or not stated	

* For the Version column (Vers) the following codes apply:

A 2003 Version of US Standard Birth Certificate

S 1989 Version of US Standard Birth Certificate

s 1989 Version of US Standard Birth Certificate but this element conforms to the 2003 standards

Position	Len	Field	Description	Reporting Flag Position	Vers*	Values	Definition
266-267	2	RF_CESARN	Previous Cesareans Num	387	A	00 01-30 99	None Number of previous cesareans Unknown or not stated
268-273	6	FILLER					
274-277	6	<u>Method of Delivery (Revised)</u>					
274	1	ME_PRES	Fetal Presentation	388	A	1 2 3 9	Cephalic Breech Other Unknown or not stated
275	1	ME_ROUT	Route & Method of Delivery	389	A	1 2 3 4 9	Spontaneous Forceps Vacuum Cesarean Unknown or not stated
276	1	ME_TRIAL	Trial of Labor Attempted	390	A	Y N X U	Yes No Not applicable Unknown or not stated
277	1	RDMETH_REC	Delivery Method Recode (Revised)	c389	A	1 2 3 4 5 6 9	Vaginal (excludes vaginal after previous C section) Vaginal after previous c-section Primary C-section Repeat C-section Vaginal (unknown if previous c-section) (2003 Standard only) C-section (unknown if previous c-section) (2003 Standard only) Not stated
278-279	2	FILLER					

* For the Version column (Vers) the following codes apply:

A 2003 Version of US Standard Birth Certificate

S 1989 Version of US Standard Birth Certificate

s 1989 Version of US Standard Birth Certificate but this element conforms to the 2003 standards

Position	Len	Field	Description	Reporting Flag Position	Vers*	Values	Definition
280	1	DMETH_REC	Delivery Method Recode	410	A,S	1 2 9	Vaginal C-section Not stated
281-282	2		<u>Maternal Morbidity</u> The checkbox items indented below follow this structure:		A	Y N U	Yes No Unknown or not stated
281	1	MM_RUPT	Ruptured Uterus	391			
282	1	MM_ICU	Admit to Intensive Care	392			
283	1	ATTEND	Attendant	433	A,S	1 2 3 4 5 9	Doctor of Medicine (MD) Doctor of Osteopathy (DO) Certified Nurse Midwife (CNM) Other Midwife Other Unknown or not stated
284-300	17	FILLER					
301	1	DPLURAL	Plurality Recode		A,S	1 2 3 4	Single Twin Triplet Quadruplet or higher
302	1	FILLER					
303	1	IMP_PLUR	Plurality Imputed		A,S	Blank 1	Plurality is not imputed Plurality is imputed
304-315	12	FILLER					

* For the Version column (Vers) the following codes apply:

A 2003 Version of US Standard Birth Certificate

S 1989 Version of US Standard Birth Certificate

s 1989 Version of US Standard Birth Certificate but this element conforms to the 2003 standards

Position	Len	Field	Description	Reporting Flag Position	Vers*	Values	Definition
316	1	SEX	Sex of Infant		A,S	M F	Male Female
317	1	IMP_SEX	Sex Imputed Only where gestation is stated or presumed to be 20 weeks or more		A,S	Blank 1	Infant Sex not Imputed Infant Sex is Imputed
<u>Gestation</u>							
318-319	2	DLMP_MM	Last Normal Menses Month	429	A,S	01 02 03 04 05 06 07 08 09 10 11 12 99	January February March April May June July August September October November December Unknown or not stated
320-321	2	FILLER					
322-325	4	DLMP_YY	Last Normal Menses Year	431	A,S	nnnn 9999	Year of last normal menses Unknown or not stated
326-328	3	FILLER					
329	1	GEST_IMP	Gestation Imputed Flag		A,S	Blank 1	Gestation is not imputed Gestation is imputed
330	1	OBGEST_FLG	Obstetric Estimate of Gestation Used Flag		A,S	Blank 1	Obstetric Estimate is not used Obstetric Estimate is used
331-332	2	COMBGEST	Gestation – Detail in Weeks	404	A,S	02-47 99	2 nd through 47 th week of Gestation Unknown

* For the Version column (Vers) the following codes apply:

A 2003 Version of US Standard Birth Certificate

S 1989 Version of US Standard Birth Certificate

s 1989 Version of US Standard Birth Certificate but this element conforms to the 2003 standards

Position	Len	Field	Description	Reporting Flag Position	Vers*	Values	Definition
333-334	2	GESTREC12	Gestation Recode 12	404	A,S	01 02 03 04 05 06 07 08 09 10 11 12	Under 16 weeks 16-19 weeks 20-23 weeks 24-27 weeks 28-31 weeks 32-33 weeks 34-36 weeks 37-38 weeks 39-40 weeks 41 weeks 42 weeks and over Unknown
335	1	GESTREC5	Gestation Recode 5	404	A,S	1 2 3 4 5	Under 20 weeks 20-23 weeks 24-27 weeks 28 weeks and over Unknown
336-337	2	OEGest_Unedt	Obstetric Gestation 373	A,S		0-98 02-47 99	Range of obstetric estimate of gestation - revised Range of clinical estimate of gestation - unrevised Unknown or not stated
338	1	FILLER					
339	1	COMBGEST_USED	Combined Gestation Used Flag		A,S	blank 1	Combined gestation not used Combined gestation used
340-341	2	OEGest_Comb	Obstetric Estimate Edited (NCHS Standard item)	373	A,S	02-47 99	Weeks of gestation Not stated
342-343	2	OEGest_R12	Obstetric Estimate Recode12 (NCHS Standard item)	373	A,S	01 02 03 04 05 06 07 08	Under 16 weeks 16-19 weeks 20-23 weeks 24-27 weeks 28-31 weeks 32-33 weeks 34-36 weeks 37-38 weeks

* For the Version column (Vers) the following codes apply:

A 2003 Version of US Standard Birth Certificate

S 1989 Version of US Standard Birth Certificate

s 1989 Version of US Standard Birth Certificate but this element conforms to the 2003 standards

Position	Len	Field	Description	Reporting Flag Position	Vers*	Values	Definition
						09	39-40 weeks
						10	41 weeks
						11	42 weeks and over
						12	Unknown
344	1	OEGest_R5	Obstetric Estimate Recode 5 (NCHS Standard item)	373	A,S	1	Under 20 weeks
						2	20-23 weeks
						3	24-27 weeks
						4	28 weeks and over
						5	Unknown
345-348	4	FILLER					
349-352	4	DBWT	Birth Weight – Detail in Grams	442	A,S	0001-8165	Number of grams
						9999	Not stated birth weight
353-354	2	BWTR14	Birth Weight Recode 14	442	A,S	01	0249 grams or less
						02	0250 – 0349 grams
						03	0350 – 0499 grams
						04	0500 – 0999 grams
						05	1000 – 1499 grams
						06	1500 – 1999 grams
						07	2000 – 2499 grams
						08	2500 – 2999 grams
						09	3000 – 3499 grams
						10	3500 – 3999 grams
						11	4000 – 4499 grams
						12	4500 – 4999 grams
						13	5000 – 8165 grams
						14	Unknown or Not Stated
355	1	BWTR4	Birth Weight Recode 4	442	A,S	1	1499 grams or less
						2	1500 – 2499 grams

* For the Version column (Vers) the following codes apply:

A 2003 Version of US Standard Birth Certificate

S 1989 Version of US Standard Birth Certificate

s 1989 Version of US Standard Birth Certificate but this element conforms to the 2003 standards

Position	Len	Field	Description	Reporting Flag Position	Vers*	Values	Definition
						3	2500 - 8165 grams
						4	Unknown or not stated
356	1	FILLER					
357	1	ESTOFD	Estimated Time of Fetal Death	435	A	N L A U	At assessment, no labor At assessment, labor Labor, no assessment Unknown
358	1	AUTOPSY	Was Autopsy Performed?	436	A	Y N P	Yes No Planned
359	1	HISTOPF	Was Histological Placental Exam Performed?	437	A	Y N P	Yes No Planned
360	1	AUTOPF	Was Autop/Hist results used in cause?	438	A	Y N X	Yes No Not applicable
361-371	11	FILLER					
372-438		<u>Flag File for Reporting Flags</u>					
		The reporting flags indented below follow this coding structure:					
						0	Not reporting
						1	Reporting
372	1	F_MEDUC	Education of Mother		A		
373	1	F_CLINEST	Obstetric Estimate of Gestation		A,S		
374	1	F_TOBACO	Tobacco Use		A		
375	1	F_M_HT	Mother's Height		A		
376	1	F_PWGT	Prepregnancy Weight		A		
377	1	F_WIC	WIC		A		
378	1	F_RF_PDIAB	Prepregnancy Diabetes		A		
379	1	F_RF_GDIAB	Gestational Diabetes		A		
380	1	F_RF_PHYPER	Prepregnancy Hypertension		A		
381	1	F_RF_GHYPER	Gestational Hypertension		A		
382	1	F_RF_ECLAMP	Hypertension Eclampsia		A		

* For the Version column (Vers) the following codes apply:

A 2003 Version of US Standard Birth Certificate

S 1989 Version of US Standard Birth Certificate

s 1989 Version of US Standard Birth Certificate but this element conforms to the 2003 standards

Position	Len	Field	Description	Reporting Flag Position	Vers*	Values	Definition
383	1	F_RF_INFT	Infertility Treatment		A		
384	1	F_RF_INFT_DRG	Fertility Enhance Drug		A		
385	1	F_RF_INFT_ART	Reproductive Technology		A		
386	1	F_RF_CESAR	Previous Cesarean		A		
387	1	F_RF_NCESAR	Number of Previous Cesareans		A		
388	1	F_MD_PRESENT	Fetal Presentation		A		
389	1	F_MD_ROUTE	Final Route and Method of Delivery		A		
390	1	F_MD_TRIAL	Trial of Labor Attempted		A		
391	1	F_MM_RUPTUR	Ruptured Uterus		A		
392	1	F_MM_ICU	Admission to Intensive Care		A		
393-402	10	FILLER					
403	1	F_MPCB	Month Prenatal Care Began		A		
404	1	F_CMBGST	Combined Gestation		A,S		
405	1	F_CIGS_0	Cigarettes Before Pregnancy		A		
406	1	F_CIGS_1	Cigarettes 1 st Trimester		A		
407	1	F_CIGS_2	Cigarettes 2 nd Trimester		A		
408	1	F_CIGS_3	Cigarettes 3 rd Trimester		A		
409	1	F_FACILITY	Facility		A		
410	1	DelMethRecF	Delivery Method Recode Flag		A,S		
411-423	13	FILLER					
424	1	F_MORIGIN	Mother's Hispanic origin		A,S		
425	1	F_MRACE_R	Mother's Race (Revised)		A		
426	1	F_FAGE_u	Father's Age		A,S		
427	1	F_DLLB_MM	Last Live Birth Month (Revised)		A		
428	1	FILLER					
429	1	F_DLMP_MM	Last normal menses month		A,S		
430	1	FILLER					
431	1	F_DLMP_YY	Last normal menses year		A,S		
432	1	F_MAGE	Mother's Age		A,S		
433	1	F_ATTENDANT	Attendant		A,S		
434	1	FILLER					
435	1	F_ESTOFD	Estimated Time of Fetal Death (Revised)		A		
436	1	F_AUTOPSY	Autopsy (Revised)		A		
437	1	F_HISTOPF	Histological Placental Exam (Revised)		A		
438	1	F_AUTOPF	Autopsy/Histological Exam Used in Cause		A		
439	1	F_MRACEREC	Mother's Bridged Race Recode		A,S		
440	1	F_PLBL	Number of previous live births living			A,S	
441	1	F_PLBD	Number of previous live births dead			A,S	
442	1	F_DBWT	Birthweight	A,S			
443-444	2	FILLER					
445	1	F_BMI	Body mass index	A			

* For the Version column (Vers) the following codes apply:

A 2003 Version of US Standard Birth Certificate

S 1989 Version of US Standard Birth Certificate

s 1989 Version of US Standard Birth Certificate but this element conforms to the 2003 standards

Position	Len	Field	Description	Reporting Flag Position	Vers*	Values	Definition
446-2602	2164	FILLER					
2603-2642	40	<u>Coded Causes & Conditions</u> The fields indented below follow this structure:				A	
						ICD10	Code Coded Value
						Blank	None reported
	2603-2607	5	IICOD	Initiating Cause or Condition Code	2651		
	2608-2642	35	FILLER				
2643-2645	3	IC_124_Fetal	Initiating Fetal Recode 124	2651		A	001-124
2646-2650	5	FILLER					
2651		<u>Flag File for Reporting Flags</u> The reporting flags indented below follow this coding structure:				0	Not reporting
						1	Reporting
	2651	1	F_ICOD Init Cause or condition	A			
2652-3150	499	FILLER					
3150		END OF RECORD					

* For the Version column (Vers) the following codes apply:

A 2003 Version of US Standard Birth Certificate

S 1989 Version of US Standard Birth Certificate

s 1989 Version of US Standard Birth Certificate but this element conforms to the 2003 standards

Table 1. Number of fetal deaths and fetal mortality rates: United States, 2014-2024

	Fetal deaths			Fetal mortality rate\1		
	Total\2	20-27 weeks\3	28 weeks or more\3	Total\2	20-27 weeks\3	28 weeks or more\3
Obstetric estimate of gestation\4						
2024	19,837	10,504	9,333	5.44	2.89	2.57
2023	20,005	10,431	9,574	5.53	2.89	2.66
2022	20,202	10,246	9,956	5.48	2.79	2.71
2021	21,105	10,824	10,281	5.73	2.95	2.80
2020	20,854	10,764	10,090	5.74	2.97	2.78
2019	21,478	11,216	10,262	5.70	2.98	2.73
2018	22,459	11,844	10,615	5.89	3.11	2.79
2017	22,827	11,861	10,966	5.89	3.07	2.84
2016	23,880	12,486	11,394	6.02	3.15	2.88
2015	23,776	12,407	11,369	5.94	3.11	2.85
2014	23,980	12,652	11,328	5.98	3.16	2.83
LMP-based gestation\5						
2014	23,999	11,948	12,051	5.98	2.99	3.01

\1Rate is number of fetal deaths in specified group per 1,000 live births and fetal deaths.

\2Fetal deaths with stated or presumed period of gestation of 20 weeks or more.

\3Not stated gestational age proportionally distributed.

\4Beginning with the 2014 data year, the obstetric estimate of gestation at delivery replaces the measure based on the date of last normal menses as the standard for measuring gestational age.

\5Date of last normal menses (LMP) was used for measuring gestational age.

SOURCE: National Center for Health Statistics, National Vital Statistics System.

Table 2. Fetal Deaths by Period of Gestation: United States, Each State and Territory, 2024

[Nonresidents of the United States are excluded]

State/territory of residence	Fetal Deaths with Stated or Presumed Gestation of 20 weeks or More			
	Total	20-27 Weeks	28 Weeks and Over	Not stated
United States\1	19,837	10,438	9,274	125
Alabama	460	241	217	2
Alaska	43	22	21	-
Arizona	479	251	227	1
Arkansas	246	135	110	1
California	1,926	959	940	27
Colorado	337	198	139	-
Connecticut	168	85	83	-
Delaware	62	24	38	-
District of Columbia	60	37	23	-
Florida	1,479	843	607	29
Georgia	908	528	377	3
Hawaii	87	41	45	1
Idaho	121	51	69	1
Illinois	739	442	295	2
Indiana	563	315	248	-
Iowa	165	81	82	2
Kansas	165	88	74	3
Kentucky	269	136	133	-
Louisiana	315	175	138	2
Maine	41	16	23	2
Maryland	388	205	182	1
Massachusetts	258	112	146	-
Michigan	567	305	261	1
Minnesota	300	153	146	1
Mississippi	264	140	121	3
Missouri	348	174	168	6
Montana	54	32	22	-
Nebraska	113	56	55	2
Nevada	243	135	108	-
New Hampshire	37	23	14	-
New Jersey	676	413	253	10
New Mexico	82	33	49	-
New York	535	261	272	2
New York City	631	362	268	1
North Carolina	721	381	339	1
North Dakota	63	30	33	-
Ohio	702	385	317	-
Oklahoma	296	156	139	1
Oregon	168	72	94	2
Pennsylvania	611	313	297	1

Rhode Island	51	25	26	-
South Carolina	334	135	196	3
South Dakota	63	34	28	1
Tennessee	509	244	263	2
Texas	1,631	761	868	2
Utah	258	150	108	-
Vermont	16	7	9	-
Virginia	506	292	207	7
Washington	398	205	191	2
West Virginia	57	20	37	-
Wisconsin	293	144	149	-
Wyoming	31	12	19	-
American Samoa	---	---	---	---
Guam	30	8	21	1
Northern Marianas	---	---	---	---
Puerto Rico	207	132	75	-
Virgin Islands	---	---	---	---

NOTE: Data for American Samoa, the Northern Marianas, and the Virgin Islands were excluded due to small numbers.

- Quantity zero.

--- Data unavailable.

1 Excludes data for the territories.

SOURCE: National Center for Health Statistics, National Vital Statistics System.

Table 3. Fetal Deaths by Period of Gestation and State/Territory of Occurrence: United States, 2024

State / territory	All Fetal Deaths			
	Total	Under 20 Weeks	20 Weeks and Over	Not stated
United States\1	35,648	14,244	19,820	1,584
Alabama	454	-	452	2
Alaska	50	7	43	-
Arizona	483	2	480	1
Arkansas	516	277	236	3
California	1,971	2	1,938	31
Colorado	400	-	400	-
Connecticut	174	1	173	-
Delaware	65	1	64	-
District of Columbia	107	2	105	-
Florida	1,509	2	1,476	31
Georgia	8,283	6,623	898	762
Hawaii	506	319	88	99
Idaho	147	39	107	1
Illinois	732	-	730	2
Indiana	545	-	545	-
Iowa	164	-	162	2
Kansas	161	-	159	2
Kentucky	278	3	275	-
Louisiana	390	77	311	2
Maine	41	-	40	1
Maryland	367	-	366	1
Massachusetts	257	1	256	-
Michigan	563	4	558	1
Minnesota	303	-	302	1
Mississippi	248	1	244	3
Missouri	373	5	361	7
Montana	53	-	53	-
Nebraska	111	-	109	2
Nevada	248	1	247	-
New Hampshire	36	-	35	1
New Jersey	652	1	642	9
New Mexico	73	6	67	-
New York	3,829	2,898	472	459
New York City	708	-	708	-
North Carolina	732	1	731	-
North Dakota	71	-	71	-
Ohio	702	-	702	-
Oklahoma	280	2	275	3
Oregon	228	54	172	2

Pennsylvania	982	370	607	5
Rhode Island	362	293	58	11
South Carolina	310	3	304	3
South Dakota	76	5	70	1
Tennessee	562	5	555	2
Texas	1,888	253	1,633	2
Utah	269	-	269	-
Vermont	18	-	18	-
Virginia	3,601	2,984	488	129
Washington	410	1	406	3
West Virginia	54	-	54	-
Wisconsin	282	1	281	-
Wyoming	24	-	24	-
American Samoa	---	---	---	---
Guam	30	-	29	1
Northern Marianas	---	---	---	---
Puerto Rico	209	-	209	-
Virgin Islands	---	---	---	---

NOTE: Data for American Samoa, the Northern Marianas, and the Virgin Islands were excluded due to small numbers.

- Quantity zero.

--- Data unavailable.

1 Excludes data for the territories.

SOURCE: National Center for Health Statistics, National Vital Statistics System.

Table 4. Number and percentage of fetal deaths by race and Hispanic origin of mother: United States, 2024

[Fetal deaths include only those with stated or presumed period of gestation of 20 weeks or more.]

Race	Number		Percentage	
	Total\1	Non-Hispanic	Total\1	Non-Hispanic
All races\2	19,837	14,484	100.0	100.0
One race	19,395	14,123	97.8	97.5
White	12,733	8,158	64.2	56.3
Black	5,279	4,784	26.6	33.0
American Indian and Alaska Native (AIAN)	231	188	1.2	1.3
Asian	1,002	886	5.1	6.1
Native Hawaiian and Other Pacific Islander (NHOPI)	150	107	0.8	0.7
More than one race	442	361	2.2	2.5
Two races	415	340	2.1	2.3
Black and White	178	153	0.9	1.1
Black and AIAN	23	19	0.1	0.1
Black and Asian	16	15	0.1	0.1
Black and NHOPI	6	5	*	*
AIAN and White	80	61	0.4	0.4
AIAN and Asian	6	5	*	*
AIAN and NHOPI	3	3	*	*
Asian and White	71	59	0.4	0.4
Asian and NHOPI	21	16	0.1	0.1
NHOPI and White	11	4	0.1	*
Three races	25	19	0.1	0.1
Black, AIAN and White	10	9	0.1	*
Black AIAN and Asian	1	-	*	*
Black, AIAN and NHOPI	1	1	*	*
Black, Asian and White	1	1	*	*
Black, Asian and NHOPI	1	1	*	*
Black, NHOPI, and White	2	2	*	*
AIAN, Asian and White	2	2	*	*
AIAN, NHOPI and White	-	-	*	*
AIAN, Asian and NHOPI	-	-	*	*
Asian, NHOPI and White	7	3	*	*
Four races	2	2	*	*
Black, AIAN, Asian and White	2	2	*	*
Black, AIAN, Asian, and NHOPI	-	-	*	*
Black, AIAN, NHOPI and White	-	-	*	*
Black, Asian, NHOPI and White	-	-	*	*
AIAN, Asian, NHOPI and White	-	-	*	*
Five races	-	-	*	*
Black, AIAN, Asian, NHOPI and White	-	-	*	*

*Estimate does not meet National Center for Health Statistics standards of reliability.

- Quantity zero.

0.0 Quantity more than zero but less than 0.05.

\1 Includes fetal deaths to race and origin groups not shown separately, such as Hispanic, single-race white, Hispanic, single-race black, non-Hispanic, multiple-race women, and births with origin not stated.

\2 Race and Hispanic origin are reported separately on reports of fetal death. Persons of Hispanic origin may be of any race. In this table, non-Hispanic women are classified by race. Race categories are consistent with the 1997 Office of Management and Budget standards.

SOURCE: National Center for Health Statistics, National Vital Statistics System.

Table 5A. Number and percentage of fetal deaths by selected demographic and health characteristics: United States, 2024

[Fetal deaths include only those with stated or presumed period of gestation of 20 weeks or more.]

	Number	Percent
Day of week		
Total	19,837	100.0
Sunday	2,109	10.6
Monday	2,397	12.1
Tuesday	3,029	15.3
Wednesday	3,184	16.1
Thursday	3,221	16.2
Friday	3,320	16.7
Saturday	2,577	13.0
Month of delivery		
Total	19,837	100.0
January	1,636	8.2
February	1,554	7.8
March	1,606	8.1
April	1,621	8.2
May	1,683	8.5
June	1,628	8.2
July	1,714	8.6
August	1,778	9.0
September	1,657	8.4
October	1,730	8.7
November	1,576	7.9
December	1,654	8.3
Place of delivery\1		
Total	19,500	100.0
Hospital\2	18,871	96.8
Freestanding birthing center	43	0.2
Clinic or doctor's office	65	0.3
Residence	372	1.9
Other	123	0.6
Not specified	26	0.1
Age of mother		
Total	19,837	100.0
<15	15	0.1
15-19	1,025	5.2
20-24	3,350	16.9
25-29	4,865	24.5
30-34	5,572	28.1
35-39	3,734	18.8
40-44	1,158	5.8
45-49	97	0.5
50-54	21	0.1
Race and Hispanic origin of mother		
Total\3	19,837	100.0
Non-Hispanic, single race\4		
Non-Hispanic white	8,158	41.1
Non-Hispanic black	4,784	24.1
Non-Hispanic American Indian or Alaska Native	188	0.9
Non-Hispanic Asian	886	4.5

Non-Hispanic Native Hawaiian or Other Pacific Islander	107	0.5
Non-Hispanic multiple race	361	1.8
Hispanic\5	4,578	23.1
Unknown	775	3.9
Hispanic origin of mother		
Total	19,837	100.0
Non-Hispanic	14,484	73.0
Mexican	2,430	12.2
Puerto Rican	325	1.6
Cuban	157	0.8
Central or South American	893	4.5
Dominican	142	0.7
Other and unknown Hispanic	631	3.2
Unknown	775	3.9
Education of mother		
Total	19,837	100.0
8th grade or less	818	4.1
9th-12th grade with no diploma	1,609	8.1
High school graduate\6	6,194	31.2
Some college credit, but no degree	2,756	13.9
Associate's degree\7	1,324	6.7
Bachelor's degree\8	2,844	14.3
Master's degree\9	1,234	6.2
Doctorate or professional degree\10	329	1.7
Unknown	2,729	13.8
Age of father\11		
Total	17,235	100.0
<15	3	*
15-19	359	2.1
20-24	1,542	8.9
25-29	2,901	16.8
30-34	3,698	21.5
35-39	3,034	17.6
40-44	1,470	8.5
45-49	469	2.7
50-54	189	1.1
55-98	105	0.6
Unknown	3,465	20.1
Trimester prenatal care began\12		
Total	19,413	100.0
1st trimester	11,873	61.2
2nd trimester	2,891	14.9
3rd trimester	311	1.6
No care	2,052	10.6
Unknown	2,286	11.8
Mother received WIC food for herself during this pregnancy\13		
Total	18,782	100.0
Yes	3,452	18.4
No	12,332	65.7
Not stated	2,998	16.0
Tobacco use during pregnancy		
Total	19,837	100.0
Yes	901	4.5

No	17,151	86.5
Unknown	1,785	9.0
Maternal pre-pregnancy body mass index\14		
Total	19,750	100.0
Underweight (BMI less than 18.5)	449	2.3
Normal weight (BMI of 18.5 to 24.9)	5,175	26.2
Overweight (BMI of 25.0 to 29.9)	4,656	23.6
Obese (BMI of 30.0 and over)	6,823	34.5
Not stated\3	2,647	13.4
Method of delivery		
Total	19,837	100.0
Vaginal (excludes vaginal after previous C-section)	13,464	67.9
Vaginal after previous C-section	1,600	8.1
Primary C-section	1,910	9.6
Repeat C-section	1,178	5.9
Vaginal (unknown if previous c-section)	600	3.0
C-section (unknown if previous c-section)	104	0.5
Not stated	981	4.9
Attendant at delivery\15		
Total	19,161	100.0
Doctor of medicine	15,886	82.9
Doctor of osteopathy	1,800	9.4
Certified nurse midwife	734	3.8
Other midwife	44	0.2
Other	572	3.0
Unspecified	125	0.7
Plurality		
Total	19,837	100.0
Singleton	18,521	93.4
Twin	1,265	6.4
Triplet	51	0.3
Quadruplet or higher	-	*
Sex		
Total	19,837	100.0
Male	10,248	51.7
Female	9,589	48.3
Obstetric estimate of gestation		
Total	19,837	100.0
20-23 weeks	7,367	37.1
24-27 weeks	3,071	15.5
28-31 weeks	2,485	12.5
32-33 weeks	1,359	6.9
34-36 weeks	2,351	11.9
37-38 weeks	1,779	9.0
39-40 weeks	1,121	5.7
41 weeks	135	0.7
42 weeks and over	44	0.2
Unknown	125	0.6
Birthweight		
Total	19,837	100.0
<500 grams	6,701	33.8
0500 - 0999 grams	3,382	17.0

1000 - 1499 gram	1,822	9.2
1500 - 1999 gram	1,626	8.2
2000 - 2499 gram	1,446	7.3
2500 - 2999 gram	1,436	7.2
3000 - 3499 gram	1,115	5.6
3500 - 3999 gram	543	2.7
4000 - 4499 gram	186	0.9
4500 - 4999 gram	75	0.4
5000 - 8165 gram	35	0.2
Unknown	1,470	7.4

*Estimate does not meet National Center for Health Statistics standards of reliability.
- Quantity zero.

\1Colorado reported place of delivery for 2024, but a system error resulted in some records being miscoded for this item. As a result, this item was flagged as not reporting for this state.

\2Includes fetal deaths occurring en route to or on arrival at hospital.

\3Includes fetal deaths to race and origin groups not shown separately, such as Hispanic, single-race white, Hispanic, single-race black, and non-Hispanic, multiple-race women, and births with origin not stated.

\4Race and Hispanic origin are reported separately on reports of fetal death; persons of Hispanic origin may be of any race. In this table, non-Hispanic women are classified by race. Race categories are consistent with the 1997 Office of Management and Budget standards. Single-race is defined as only one race reported on the report of fetal death.

\5Includes all persons of Hispanic origin of any race.

\6Includes General Educational Development (GED).

\7Includes Associate in Arts and Associate in Science.

\8Includes Bachelor in Arts and Bachelor in Science.

\9Includes Master in Arts, Master in Science, Master of Engineering, Master of Education, Master of Social Work, and Master of Business Administration.

\10Includes Doctor of Philosophy, Doctor of Education, Doctor of Medicine, Doctor of Dental Surgery, Doctor of Veterinary Medicine, Doctor of Laws, and Juris Doctor.

\11Alabama, the District of Columbia, Georgia, New Mexico, New York, Rhode Island, and Virginia reported father's age for 2024 but had an unknown level of 50% or higher and were flagged as not reporting.

\12Colorado and Hawaii reported date of first prenatal care for 2024 but had unknown levels of 50% or higher and were flagged as not reporting.

\13Mother received WIC food for herself during this pregnancy is not reported by New York City. Colorado and Hawaii reported WIC for 2024 but had an unknown level of 50% or higher and were flagged as not reporting.

\14Hawaii reported maternal pre-pregnancy body mass index for 2024 but had an unknown level of 50% or higher and was flagged as not reporting.

\15New Jersey reported attendant at delivery for 2024, but a system error resulted in some records being miscoded for this item. As a result, this item was flagged as not reporting for this state.

SOURCE: National Center for Health Statistics, National Vital Statistics System.

Table 5B. Number and percentage of fetal deaths by selected demographic and health characteristics: Guam and Puerto Rico, 2024

[Fetal deaths include only those with stated or presumed period of gestation of 20 weeks or more.]

	Number	Percent
Day of week		
Total	237	100.0
Sunday	29	12.2
Monday	37	15.6
Tuesday	23	9.7
Wednesday	40	16.9
Thursday	46	19.4
Friday	34	14.3
Saturday	28	11.8
Month of delivery		
Total	237	100.0
January	15	6.3
February	21	8.9
March	19	8.0
April	19	8.0
May	28	11.8
June	23	9.7
July	15	6.3
August	16	6.8
September	19	8.0
October	19	8.0
November	25	10.5
December	18	7.6
Place of delivery		
Total	237	100.0
Hospital\1	233	98.3
Freestanding birthing center	-	*
Clinic or doctor's office	1	*
Residence	1	*
Other	2	*
Not specified	-	*
Age of mother		
Total	237	100.0
<15	-	*
15-19	18	7.6
20-24	52	21.9
25-29	68	28.7
30-34	60	25.3
35-39	29	12.2
40-44	9	*
45-49	1	*
50-54	-	*
Race and Hispanic origin of mother		
Total\2	237	100.0
Non-Hispanic, single race\3		
Non-Hispanic white	3	*
Non-Hispanic black	1	*
Non-Hispanic American Indian or Alaska Native	-	*
Non-Hispanic Asian	6	*

Non-Hispanic Native Hawaiian or Other Pacific Islander	21	8.9
Non-Hispanic multiple race	2	*
Hispanic\4	203	85.7
Unknown	1	*
Hispanic origin of mother		
Total	237	100.0
Non-Hispanic	33	13.9
Mexican	-	*
Puerto Rican	199	84.0
Cuban	-	*
Central or South American	-	*
Dominican	4	*
Other and unknown Hispanic	-	*
Unknown	1	*
Education of mother		
Total	237	100.0
8th grade or less	5	*
9th-12th grade with no diploma	25	10.5
High school graduate\5	75	31.6
Some college credit, but no degree	21	8.9
Associate's degree\6	42	17.7
Bachelor's degree\7	51	21.5
Master's degree\8	12	5.1
Doctorate or professional degree\9	2	*
Unknown	4	*
Age of father\10		
Total	207	100.0
<15	-	*
15-19	6	*
20-24	26	12.6
25-29	40	19.3
30-34	37	17.9
35-39	24	11.6
40-44	19	9.2
45-49	6	*
50-54	3	*
55-98	-	*
Unknown	46	22.2
Trimester prenatal care began		
Total	237	100.0
1st trimester	148	62.4
2nd trimester	52	21.9
3rd trimester	9	*
No care	17	7.2
Unknown	11	4.6
Mother received WIC food for herself during this pregnancy\11		
Total	207	100.0
Yes	145	70.0
No	57	27.5
Not stated	5	*
Tobacco use during pregnancy		
Total	237	100.0
Yes	1	*

No	221	93.2
Unknown	15	6.3
Maternal pre-pregnancy body mass index\12		
Total	207	100.0
Underweight (BMI less than 18.5)	10	*
Normal weight (BMI of 18.5 to 24.9)	39	18.8
Overweight (BMI of 25.0 to 29.9)	68	32.9
Obese (BMI of 30.0 and over)	87	42.0
Not stated\3	3	*
Method of delivery		
Total	237	100.0
Vaginal (excludes vaginal after previous C-section)	155	65.4
Vaginal after previous C-section	18	7.6
Primary C-section	32	13.5
Repeat C-section	14	5.9
Vaginal (unknown if previous c-section)	12	5.1
C-section (unknown if previous c-section)	3	*
Not stated	3	*
Attendant at delivery		
Total	237	100.0
Doctor of medicine	230	97.0
Doctor of osteopathy	1	*
Certified nurse midwife	1	*
Other midwife	-	*
Other	-	*
Unspecified	5	*
Plurality		
Total	237	100.0
Singleton	221	93.2
Twin	16	6.8
Triplet	-	*
Quadruplet or higher	-	*
Sex		
Total	237	100.0
Male	137	57.8
Female	100	42.2
Obstetric estimate of gestation		
Total	237	100.0
20-23 weeks	111	46.8
24-27 weeks	29	12.2
28-31 weeks	22	9.3
32-33 weeks	12	5.1
34-36 weeks	21	8.9
37-38 weeks	22	9.3
39-40 weeks	16	6.8
41 weeks	1	*
42 weeks and over	2	*
Unknown	1	*
Birthweight		
Total	237	100.0
<500 grams	93	39.2
0500 - 0999 grams	50	21.1

1000 - 1499 gram	19	8.0
1500 - 1999 gram	12	5.1
2000 - 2499 gram	15	6.3
2500 - 2999 gram	18	7.6
3000 - 3499 gram	15	6.3
3500 - 3999 gram	3	*
4000 - 4499 gram	6	*
4500 - 4999 gram	1	*
5000 - 8165 gram	1	*
Unknown	4	*

*Estimate does not meet National Center for Health Statistics standards of reliability.

- Quantity zero.

\1Includes fetal deaths occurring en route to or on arrival at hospital.

\2Includes fetal deaths to race and origin groups not shown separately, such as Hispanic, single-race white, Hispanic, single-race black, and non-Hispanic, multiple-race women, and births with origin not stated.

\3Race and Hispanic origin are reported separately on reports of fetal death; persons of Hispanic origin may be of any race. In this table, non-Hispanic women are classified by race. Race categories are consistent with the 1997 Office of Management and Budget standards. Single-race is defined as only one race reported on the report of fetal death.

\4Includes all persons of Hispanic origin of any race.

\5Includes General Educational Development (GED).

\6Includes Associate in Arts and Associate in Science.

\7Includes Bachelor in Arts and Bachelor in Science.

\8Includes Master in Arts, Master in Science, Master of Engineering, Master of Education, Master of Social Work, and Master of Business Administration.

\9Includes Doctor of Philosophy, Doctor of Education, Doctor of Medicine, Doctor of Dental Surgery, Doctor of Veterinary Medicine, Doctor of Laws, and Juris Doctor.

\10Guam reported father's age for 2024 but had an unknown level of 50% or higher and was flagged as not reporting.

\11Guam reported WIC for 2024 but had an unknown level of 50% or higher and was flagged as not reporting.

\12Guam reported maternal pre-pregnancy body mass index for 2024 but had an unknown level of 50% or higher and was flagged as not reporting.

SOURCE: National Center for Health Statistics, National Vital Statistics System.

**Table 6A. Number and percentage of fetal deaths by selected health characteristics:
United States, 2024**

[Fetal deaths include only those with stated or presumed period of gestation of 20 weeks or more.]

Risk factor	Total	Number reported	Unknown	Per 1,000
Diabetes				
Pregpregnancy (Diagnosis prior to this pregnancy)	19,837	809	987	42.9
Gestational (Diagnosis in this pregnancy)	19,837	916	987	48.6
Hypertension				
Pregpregnancy (Chronic)	19,837	1,360	987	72.1
Gestational (PIH, preeclampsia)	19,837	1,500	987	79.6
Eclampsia	19,837	155	987	8.2
Pregnancy resulted from infertility treatment\1	19,116	560	969	30.9
Mother had a previous cesarean delivery\2	19,837	2,837	987	15.1
Maternal morbidity\3				
Ruptured uterus	19,837	148	1,042	787.4
Admissioin to intensive care unit	19,837	469	1,042	2,495.3

\1 North Carolina was flagged as not reporting this item due to a data quality issue.

\2 Mother had a previous cesarean delivery per 100 fetal deaths.

\3 Maternal morbidities per 100,000 fetal deaths.

NOTE: PIH is pregnancy-induced hypertension.

SOURCE: National Center for Health Statistics, National Vital Statistics System.

Table 6B. Number and percentage of fetal deaths by selected health characteristics: Guam and Puerto Rico, 2024

[Fetal deaths include only those with stated or presumed period of gestation of 20 weeks or more.]

Risk factor	Total	Number reported	Unknown	Per 1,000
Diabetes				
Pregpregnancy (Diagnosis prior to this pregnancy)	237	13	16	58.8
Gestational (Diagnosis in this pregnancy)	237	9	16	*
Hypertension				
Pregpregnancy (Chronic)	237	17	16	76.9
Gestational (PIH, preeclampsia)	237	9	16	*
Eclampsia	237	1	16	*
Pregnancy resulted from infertility treatment	237	2	16	*
Mother had a previous cesarean delivery\1	237	32	16	14.5
Maternal morbidity\2				
Ruptured uterus	237	1	21	*
Admissioin to intensive care unit	237	4	21	*

*Estimate does not meet National Center for Health Statistics standards of reliability.

\1 Mother had a previous cesarean delivery per 100 fetal deaths.

\2 Maternal morbidities per 100,000 fetal deaths.

NOTE: PIH is pregnancy-induced hypertension.

SOURCE: National Center for Health Statistics, National Vital Statistics System.

Table 7A. Deaths according to 124 selected causes of fetal death: 43 states and the District of Columbia, 2024

[Fetal deaths include only those with stated or presumed period of gestation of 20 weeks or more.]

Cause of death (based on ICD-10)	Number
All causes	16,514
Certain infectious and parasitic diseases.....A00-B99	10
Congenital syphilis.....A50	4
Human immunodeficiency virus (HIV) disease.....B20-B24	-
Other viral diseases.....A80-B19,B25-B34	6
Other and unspecified infectious and parasitic diseases.....A00-A49,A51-A79,B35-B99	-
Malignant neoplasms.....C00-C97	-
In situ neoplasms, benign neoplasms and neoplasms of uncertain or unknown behavior.....D00-D49	84
Anemias.....D50-D64	1
Endocrine, nutritional and metabolic diseases.....E00-E88	8
Short stature, not elsewhere classified.....E34.3	-
Cystic fibrosis.....E84	1
Other endocrine, nutritional and metabolic diseases.....E00-E32,E34.0-E34.2,E34.4-E34.9,E40-E83,E85-E88	7
Meningitis.....G00,G03	-
Other diseases of nervous system and sense organs.....G04-H93	4
Umbilical hernia.....K42	-
Other hernia.....K40-K41,K43-K46	-
Other and unspecified diseases of digestive system.....K00-K38,K50-K92	1
All other diseases, excluding perinatal conditions, congenital anomalies, and symptoms, signs and ill-defined conditions.....D65-D89,I00-J98,L00-L99	11
Certain conditions originating in the perinatal period.....P00-P96	14,640
Fetus affected by maternal conditions that may be unrelated to present pregnancy...P00	1,634
Fetus affected by maternal hypertensive disorders.....P00.0	902
Fetus affected by maternal renal and urinary tract diseases.....P00.1	24
Fetus affected by maternal infectious and parasitic diseases.....P00.2	138
Fetus affected by other maternal circulatory and respiratory diseases.....P00.3	71
Fetus affected by maternal nutritional disorders.....P00.4	-
Fetus affected by maternal injury.....P00.5	51
Fetus affected by surgical procedure on mother.....P00.6	5
Fetus affected by other medical procedures and maternal conditions.....P00.7-P00.8	442
Fetus affected by unspecified maternal condition.....P00.9	1
Fetus affected by maternal complications of pregnancy.....P01	2,242
Fetus affected by incompetent cervix.....P01.0	252
Fetus affected by premature rupture of membranes.....P01.1	1,233
Fetus affected by oligohydramnios.....P01.2	65
Fetus affected by polyhydramnios.....P01.3	38
Fetus affected by ectopic pregnancy.....P01.4	1
Fetus affected by multiple pregnancy.....P01.5	249
Fetus affected by maternal death.....P01.6	10
Fetus affected by malpresentation before labor.....P01.7	3
Fetus affected by other and unspecified maternal complications of pregnancy.....P01.8-P01.9	391
Fetus affected by complications of placenta, cord and membranes.....P02	3,913
Fetus affected by placenta previa.....P02.0	40
Fetus affected by other forms of placental separation and hemorrhage.....P02.1	1,300
Fetus affected by other and unspecified morphological and functional abnormalities of placenta.....P02.2	911
Fetus affected by placental transfusion syndromes.....P02.3	83
Fetus affected by prolapsed cord.....P02.4	114
Fetus affected by other compression of umbilical cord.....P02.5	772
Fetus affected by other and unspecified conditions of umbilical cord.....P02.6	262
Fetus affected by chorioamnionitis.....P02.7	424
Fetus affected by other and unspecified abnormalities of membranes.....P02.8-P02.9	7
Fetus affected by other complications of labor and delivery.....P03	132
Fetus affected by breech delivery and extraction.....P03.0	8
Fetus affected by other malpresentation, malposition and disproportion during labor and delivery.....P03.1	7
Fetus affected by forceps delivery.....P03.2	-
Fetus affected by delivery by vacuum extractor (ventouse).....P03.3	-
Fetus affected by cesarean delivery.....P03.4	5
Fetus affected by precipitate delivery.....P03.5	-
Fetus affected by abnormal uterine contractions.....P03.6	1
Fetus affected by other and unspecified complications of labor and delivery.....P03.8-P03.9	111
Fetus affected by noxious influences transmitted via placenta.....P04	138
Slow fetal growth and fetal malnutrition.....P05	241
Disorders related to short gestation and low birth weight, not elsewhere classified.....P0	318
Extremely low birth weight or extreme immaturity.....P07.0,P07.2	175
Other low birth weight and preterm.....P07.1,P07.3	143
Disorders related to long gestation and high birth weight.....P08	5
Exceptionally large size and other heavy for gestational age fetus.....P08.0-P08.1	4
Post-term, not heavy for gestational age fetus.....P08.2	1
Birth trauma.....P10-P15	3
Intracranial laceration and hemorrhage due to birth injury and other injuries to central nervous system.....P10-P11	1
Other birth trauma.....P12-P15	2
Intrauterine hypoxia and birth asphyxia.....P20-P21	13
Intrauterine hypoxia first noted before onset of labor.....P20.0	-
Intrauterine hypoxia first noted during labor and delivery.....P20.1	-
Intrauterine hypoxia, unspecified.....P20.9	12
Birth asphyxia.....P21	1
Other respiratory conditions originating in the perinatal period.....P22.8-P22.9,P23-P28	-
Congenital pneumonia.....P23	-
Aspiration syndromes.....P24	1
Interstitial emphysema and related conditions originating in the perinatal period.....P2	-
Atelectasis.....P28.0-P28.1	-
Other respiratory system disorders.....P22.8-P22.9,P26-P27,P28.2-P28.9	7
Infections specific to the perinatal period.....P35-P39	13
Congenital rubella syndrome.....P35.0	-
Congenital cytomegalovirus infection.....P35.1	5
Congenital herpesviral (herpes simplex) infection.....P35.2	-
Congenital viral hepatitis.....P35.3	-
Bacterial sepsis.....P36	1
Congenital tuberculosis.....P37.0	-
Congenital toxoplasmosis.....P37.1	-
Other infections specific to the perinatal period.....P35.8-P35.9,P37.2-P37.9,P38-P39	7
Fetal hemorrhage.....P50-P54	20
Hemolytic disease of fetus.....P55-P56	6
Rh isoimmunization of fetus.....P55.0	3
ABO isoimmunization of fetus.....P55.1	-
Other hemolytic disease of fetus.....P55.8-P55.9	3
Hydrops fetalis due to hemolytic disease.....P56	-

Perinatal jaundice.....	P57-P59	-
Hematological disorders.....	P60-P61	1
Transitory endocrine and metabolic disorders specific to fetus.....	P70-P74	389
Syndrome of infant of a diabetic mother and neonatal diabetes mellitus.....	P70.0-P70.2	389
Other transitory endocrine and metabolic disorders specific to fetus.....	P70.3-P70.9, P71-P74	-
Digestive system disorders of fetus.....	P76-P78	2
Other conditions originating in the perinatal period.....	P29, P80-P96	5,562
Hydrops fetalis not due to hemolytic disease.....	P83.2	224
Fetal death of unspecified cause.....	P95	5,279
Withdrawal symptoms from maternal use of drugs of addiction.....	P96.1	-
Termination of pregnancy.....	P96.4	-
Complications of intrauterine procedures, not elsewhere classified.....	P96.5	-
All other specified conditions originating in the perinatal period.....	P29, P83.0-P83.1, P83.3-P83.9, P91, P94, P96.0, P96.3, P96.8	59
Condition originating in the perinatal period, unspecified.....	P96.9	-
Congenital malformations, deformations and chromosomal abnormalities.....	Q00-Q99	1,721
Congenital malformations of nervous system.....	Q00-Q07	355
Anencephaly and similar malformations.....	Q00	133
Encephalocele.....	Q01	21
Microcephaly.....	Q02	5
Congenital hydrocephalus.....	Q03	72
Reduction deformities of brain.....	Q04.0-Q04.3	54
Other congenital malformations of brain.....	Q04.4-Q04.9	21
Spina bifida.....	Q05	26
Other congenital malformations of spinal cord and nervous system.....	Q06-Q07	23
Congenital malformations of eye, ear, face and neck.....	Q10-Q18	4
Congenital malformations of heart.....	Q20-Q24	245
Other congenital malformations of circulatory system.....	Q25-Q28	54
Congenital malformations of lung.....	Q33	7
Other congenital malformations of respiratory system.....	Q30-Q32, Q34	9
Congenital malformations of digestive system.....	Q35-Q45	22
Congenital malformations of genital organs.....	Q50-Q56	5
Congenital malformations of urinary system.....	Q60-Q64	126
Renal agenesis and other reduction defects of kidney.....	Q60	79
Cystic kidney disease.....	Q61	28
Other congenital malformations of urinary system.....	Q62-Q64	19
Congenital malformations and deformations of musculoskeletal system, limbs and integument.....	Q65-Q85	177
Other congenital malformations.....	Q86-Q89	135
Conjoined twins.....	Q89.4	1
Multiple congenital malformations, not elsewhere classified.....	Q89.7	48
All other congenital malformations.....	Q86-Q87, Q89.0-Q89.3, Q89.8-Q89.9	86
Chromosomal abnormalities, not elsewhere classified.....	Q90-Q99	582
Down's syndrome.....	Q90	96
Edward's syndrome.....	Q91.0-Q91.3	237
Patau's syndrome.....	Q91.4-Q91.7	73
Other chromosomal abnormalities, not elsewhere classified.....	Q92-Q99	176
Symptoms, signs and abnormal clinical and laboratory findings, not elsewhere classified.....		17
External causes of mortality.....	*U01, V01-Y84	17
Accidents (unintentional injuries).....	V01-X59	17
Assault (homicide).....	*U01, X85-Y09	-
Complications of medical and surgical care.....	Y40-Y84	-
Other external causes.....	Y10-Y36	-

- Quantity zero.

NOTE: Excludes data for jurisdictions (Arizona, Georgia, Michigan, Mississippi, Nevada, North Dakota, Oregon, and New York City) for which the cause of death was unspecified (P95) for 50% or more of records.

Source: National Center for Health Statistics, National Vital Statistics System.

Table 7B. Deaths according to 124 selected causes of fetal death: Guam and Puerto Rico, 2024

[Fetal deaths include only those with stated or presumed period of gestation of 20 weeks or more.]

Cause of death (based on ICD-10)	Number
All causes ¹	237
Certain infectious and parasitic diseases.....A00-B99	-
Congenital syphilis.....A50	-
Human immunodeficiency virus (HIV) disease.....B20-B24	-
Other viral diseases.....A80-B19,B25-B34	-
Other and unspecified infectious and parasitic diseases.....A00-A49,A51-A79,B35-B99	-
Malignant neoplasms.....C00-C97	-
In situ neoplasms, benign neoplasms and neoplasms of uncertain or unknown behavior.....D00-D48	-
Anemias.....D50-D64	-
Endocrine, nutritional and metabolic diseases.....E00-E88	-
Short stature, not elsewhere classified.....E34.3	-
Cystic fibrosis.....E84	-
Other endocrine, nutritional and metabolic diseases.....E00-E32,E34.0-E34.2,E34.4-E34.9,E40-E83,E85-E88	-
Meningitis.....G00,G03	-
Other diseases of nervous system and sense organs.....G04-H93	-
Umbilical hernia.....K42	-
Other hernia.....K40-K41,K43-K46	-
Other and unspecified diseases of digestive system.....K00-K38,K50-K92	-
All other diseases, excluding perinatal conditions, congenital anomalies, and symptoms, signs and ill-defined conditions.....D65-D89,I00-J98,L00-N	-
Certain conditions originating in the perinatal period.....P00-P96	207
Fetus affected by maternal conditions that may be unrelated to present pregnancy...P00	42
Fetus affected by maternal hypertensive disorders.....P00.0	18
Fetus affected by maternal renal and urinary tract diseases.....P00.1	2
Fetus affected by maternal infectious and parasitic diseases.....P00.2	1
Fetus affected by other maternal circulatory and respiratory diseases.....P00.3	4
Fetus affected by maternal nutritional disorders.....P00.4	-
Fetus affected by maternal injury.....P00.5	1
Fetus affected by surgical procedure on mother.....P00.6	-
Fetus affected by other medical procedures and maternal conditions.....P00.7-P00.8	16
Fetus affected by unspecified maternal condition.....P00.9	-
Fetus affected by maternal complications of pregnancy...P01	92
Fetus affected by incompetent cervix.....P01.0	26
Fetus affected by premature rupture of membranes.....P01.1	25
Fetus affected by oligohydramnios.....P01.2	3
Fetus affected by polyhydramnios.....P01.3	1
Fetus affected by ectopic pregnancy.....P01.4	-
Fetus affected by multiple pregnancy.....P01.5	7
Fetus affected by maternal death.....P01.6	-
Fetus affected by malpresentation before labor.....P01.7	-
Fetus affected by other and unspecified maternal complications of pregnancy.....P01.8-P01.9	30
Fetus affected by complications of placenta, cord and membranes.....P02	38
Fetus affected by placenta previa.....P02.0	-
Fetus affected by other forms of placental separation and hemorrhage.....P02.1	12
Fetus affected by other and unspecified morphological and functional abnormalities of placenta.....P02.2	3
Fetus affected by placental transfusion syndromes.....P02.3	-
Fetus affected by prolapsed cord.....P02.4	-
Fetus affected by other compression of umbilical cord.....P02.5	12
Fetus affected by other and unspecified conditions of umbilical cord.....P02.6	7
Fetus affected by chorioamnionitis.....P02.7	3
Fetus affected by other and unspecified abnormalities of membranes.....P02.8-P02.9	1
Fetus affected by other complications of labor and delivery.....P03	-
Fetus affected by breech delivery and extraction.....P03.0	-
Fetus affected by other malpresentation, malposition and disproportion during labor and delivery.....P03.1	-
Fetus affected by forceps delivery.....P03.2	-
Fetus affected by delivery by vacuum extractor (ventouse).....P03.3	-
Fetus affected by cesarean delivery.....P03.4	-
Fetus affected by precipitate delivery.....P03.5	-
Fetus affected by abnormal uterine contractions.....P03.6	-
Fetus affected by other and unspecified complications of labor and delivery.....P03.8-P03.9	-
Fetus affected by noxious influences transmitted via placenta.....P04	-
Slow fetal growth and fetal malnutrition.....P05	2
Disorders related to short gestation and low birth weight, not elsewhere classified.....P07	7
Extremely low birth weight or extreme immaturity.....P07.0,P07.2	5
Other low birth weight and preterm.....P07.1,P07.3	2
Disorders related to long gestation and high birth weight.....P08	-
Exceptionally large size and other heavy for gestational age fetus.....P08.0-P08.1	-
Post-term, not heavy for gestational age fetus.....P08.2	-
Birth trauma.....P10-P15	-
Intracranial laceration and hemorrhage due to birth injury and other injuries to central nervous system.....P10-P11	-
Other birth trauma.....P12-P15	-
Intrauterine hypoxia and birth asphyxia.....P20-P21	-
Intrauterine hypoxia first noted before onset of labor.....P20.0	-
Intrauterine hypoxia first noted during labor and delivery.....P20.1	-
Intrauterine hypoxia, unspecified.....P20.9	-
Birth asphyxia.....P21	-
Other respiratory conditions originating in the perinatal period...P22.8-P22.9,P23-P28	-
Congenital pneumonia.....P23	-
Aspiration syndromes.....P24	-
Interstitial emphysema and related conditions originating in the perinatal period.....P25	-
Atelectasis.....P28.0-P28.1	-
Other respiratory system disorders.....P22.8-P22.9,P26-P27,P28.2-P28.9	-
Infections specific to the perinatal period.....P35-P39	-
Congenital rubella syndrome.....P35.0	-
Congenital cytomegalovirus infection.....P35.1	-
Congenital herpesviral (herpes simplex) infection.....P35.2	-
Congenital viral hepatitis.....P35.3	-
Bacterial sepsis.....P36	-
Congenital tuberculosis.....P37.0	-
Congenital toxoplasmosis.....P37.1	-
Other infections specific to the perinatal period.....P35.8-P35.9,P37.2-P37.9,P38-P39	-
Fetal hemorrhage.....P50-P54	-

Hemolytic disease of fetus.....	P55-P56	-
Rh isoimmunization of fetus.....	P55.0	-
ABO isoimmunization of fetus.....	P55.1	-
Other hemolytic disease of fetus.....	P55.8-P55.9	-
Hydrops fetalis due to hemolytic disease.....	P56	-
Perinatal jaundice.....	P57-P59	-
Hematological disorders.....	P60-P61	-
Transitory endocrine and metabolic disorders specific to fetus.....	P70-P74	11
Syndrome of infant of a diabetic mother and neonatal diabetes mellitus.....	P70.0-P70.2	11
Other transitory endocrine and metabolic disorders specific to fetus.....	P70.3-P70.9, P71-P74	-
Digestive system disorders of fetus.....	P76-P78	-
Other conditions originating in the perinatal period.....	P29, P80-P96	15
Hydrops fetalis not due to hemolytic disease.....	P83.2	2
Fetal death of unspecified cause.....	P95	13
Withdrawal symptoms from maternal use of drugs of addiction.....	P96.1	-
Termination of pregnancy.....	P96.4	-
Complications of intrauterine procedures, not elsewhere classified.....	P96.5	-
All other specified conditions originating in the perinatal period.....	P29, P83.0-P83.1, P83.3-P83.9, P91, P94, P96.0, P96.3, P96.8	-
Condition originating in the perinatal period, unspecified.....	P96.9	-
Congenital malformations, deformations and chromosomal abnormalities.....	Q00-Q99	28
Congenital malformations of nervous system.....	Q00-Q07	2
Anencephaly and similar malformations.....	Q00	-
Encephalocele.....	Q01	-
Microcephaly.....	Q02	-
Congenital hydrocephalus.....	Q03	-
Reduction deformities of brain.....	Q04.0-Q04.3	2
Other congenital malformations of brain.....	Q04.4-Q04.9	-
Spina bifida.....	Q05	-
Other congenital malformations of spinal cord and nervous system.....	Q06-Q07	-
Congenital malformations of eye, ear, face and neck.....	Q10-Q18	-
Congenital malformations of heart.....	Q20-Q24	3
Other congenital malformations of circulatory system.....	Q25-Q28	1
Congenital malformations of lung.....	Q33	-
Other congenital malformations of respiratory system.....	Q30-Q32, Q34	1
Congenital malformations of digestive system.....	Q35-Q45	1
Congenital malformations of genital organs.....	Q50-Q56	-
Congenital malformations of urinary system.....	Q60-Q64	4
Renal agenesis and other reduction defects of kidney.....	Q60	2
Cystic kidney disease.....	Q61	2
Other congenital malformations of urinary system.....	Q62-Q64	-
Congenital malformations and deformations of musculoskeletal system, limbs and integument.....	Q65-Q85	6
Other congenital malformations.....	Q86-Q89	1
Conjoined twins.....	Q89.4	-
Multiple congenital malformations, not elsewhere classified.....	Q89.7	-
All other congenital malformations.....	Q86-Q87, Q89.0-Q89.3, Q89.8-Q89.9	1
Chromosomal abnormalities, not elsewhere classified.....	Q90-Q99	9
Down's syndrome.....	Q90	-
Edward's syndrome.....	Q91.0-Q91.3	6
Patau's syndrome.....	Q91.4-Q91.7	1
Other chromosomal abnormalities, not elsewhere classified.....	Q92-Q99	2
Symptoms, signs and abnormal clinical and laboratory findings, not elsewhere classified.....	R	-
External causes of mortality.....	*U01, V01-Y84	-
Accidents (unintentional injuries).....	V01-X59	2
Assault (homicide).....	*U01, X85-Y09	-
Complications of medical and surgical care.....	Y40-Y84	-
Other external causes.....	Y10-Y36	-

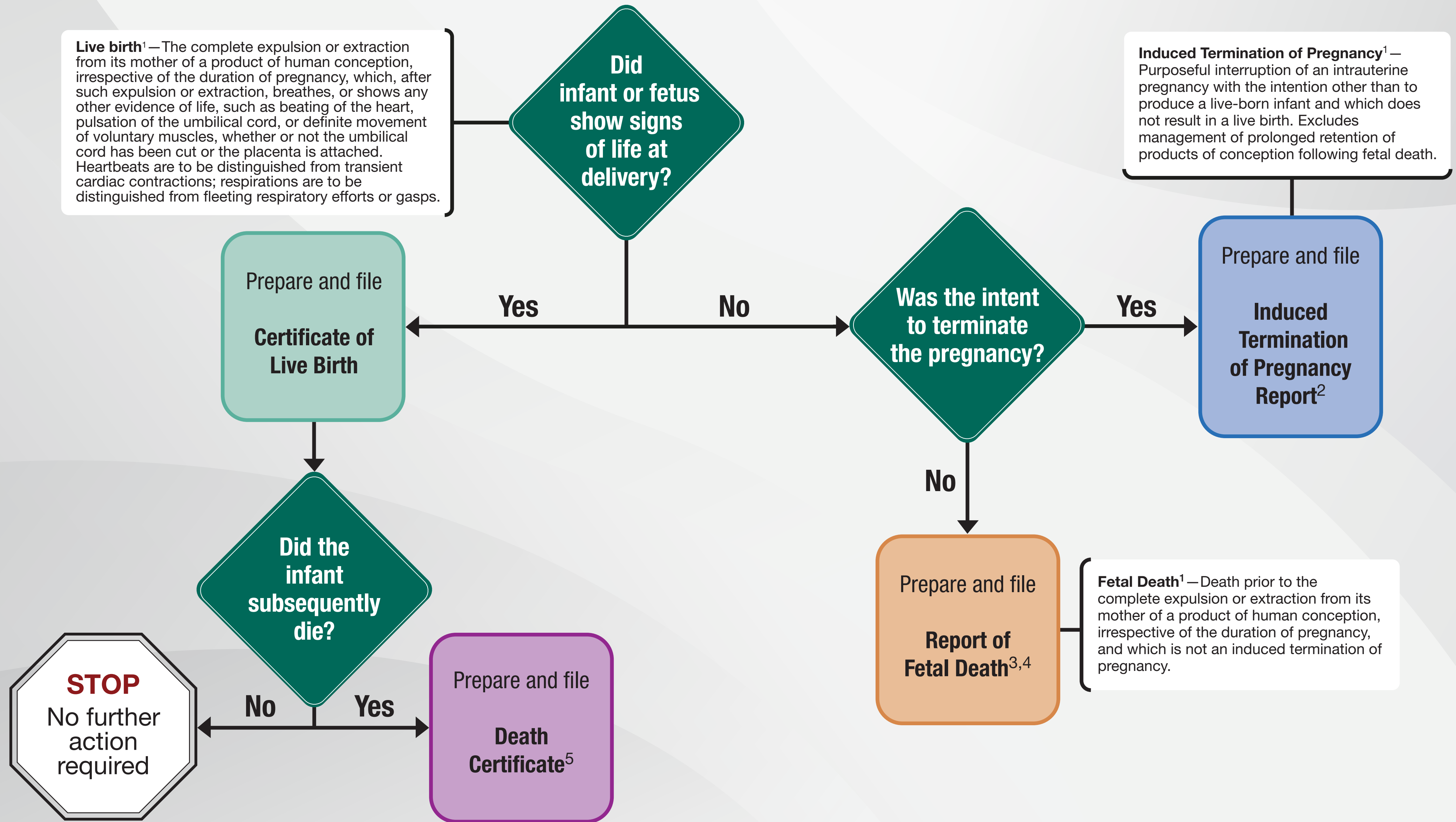
- Quantity zero.

NOTE: Data for American Samoa, the Northern Marianas, and the Virgin Islands were excluded due to small numbers.

Source: National Center for Health Statistics, National Vital Statistics System.

Figure 1.

Guidelines for Reporting Live Births, Infant Deaths, Fetal Deaths, and Induced Terminations of Pregnancy



¹See: National Center for Health Statistics. Model State Vital Statistics Act and Regulations, 1992 revision. 1994. Available from: <https://www.cdc.gov/nchs/data/misc/mvsact92b.pdf>.

²Refer to jurisdictional reporting requirements.

³If birthweight ≥ 350 grams or gestational age 20+ weeks (see “Model State Vital Statistics Act and Regulations, 1992 revision”); however, reporting requirements vary by jurisdiction as to the birthweight or gestational age at which a Report of Fetal Death is required. Refer to jurisdiction-specific requirements.

⁴See disposal of remains requirements for your state.

⁵Whether the hospital or the funeral home prepares and files the death certificate is determined by which disposes of remains.

MOTHER	1. NAME OF FETUS (optional-at the discretion of the parents)		2. TIME OF DELIVERY (24hr)	3. SEX (M/F/Unk)	4. DATE OF DELIVERY (Mo/Day/Yr)	
	5a. CITY, TOWN, OR LOCATION OF DELIVERY	7. PLACE WHERE DELIVERY OCCURRED (Check one) <input type="checkbox"/> Hospital <input type="checkbox"/> Freestanding birthing center <input type="checkbox"/> Home Delivery: Planned to deliver at home? <input type="checkbox"/> Yes <input type="checkbox"/> No <input type="checkbox"/> Clinic/Doctor's office <input type="checkbox"/> Other (Specify) _____		8. FACILITY NAME (If not institution, give street and number)		
	5b. ZIP CODE OF DELIVERY					
	6. COUNTY OF DELIVERY					
	9. FACILITY ID. (NPI)	10a. MOTHER'S CURRENT LEGAL NAME (First, Middle, Last, Suffix)	10b. DATE OF BIRTH (Mo/Day/Yr)			
	10c. MOTHER'S NAME PRIOR TO FIRST MARRIAGE (First, Middle, Last, Suffix)	10d. BIRTHPLACE (State, Territory, or Foreign Country)				
	11a. RESIDENCE OF MOTHER-STATE	11b. COUNTY		11c. CITY, TOWN, OR LOCATION		
	11d. STREET AND NUMBER		11e. APT. NO.	11f. ZIP CODE	11g. INSIDE CITY LIMITS? <input type="checkbox"/> Yes <input type="checkbox"/> No	
	12a. FATHER'S CURRENT LEGAL NAME (First, Middle, Last, Suffix)		12b. DATE OF BIRTH (Mo/Day/Yr)	12c. BIRTHPLACE (State, Territory, or Foreign Country)		
	13. METHOD OF DISPOSITION: <input type="checkbox"/> Burial <input type="checkbox"/> Cremation <input type="checkbox"/> Hospital Disposition <input type="checkbox"/> Donation <input type="checkbox"/> Removal from State <input type="checkbox"/> Other (Specify) _____					
DISPOSITION	14. ATTENDANT'S NAME, TITLE, AND NPI NAME: _____ NPI: _____ TITLE: <input type="checkbox"/> MD <input type="checkbox"/> DO <input type="checkbox"/> CNM/CM <input type="checkbox"/> OTHER MIDWIFE <input type="checkbox"/> OTHER (Specify) _____					15. NAME AND TITLE OF PERSON COMPLETING REPORT Name _____ Title _____
	16. DATE REPORT COMPLETED MM / DD / YYYY		17. DATE RECEIVED BY REGISTRAR MM / DD / YYYY			
18. CAUSE/CONDITIONS CONTRIBUTING TO FETAL DEATH						
CAUSE OF FETAL DEATH	18a. INITIATING CAUSE/CONDITION (AMONG THE CHOICES BELOW, PLEASE SELECT THE <u>ONE</u> WHICH MOST LIKELY BEGAN THE SEQUENCE OF EVENTS RESULTING IN THE DEATH OF THE FETUS) Maternal Conditions/Diseases (Specify) _____ Complications of Placenta, Cord, or Membranes <input type="checkbox"/> Rupture of membranes prior to onset of labor <input type="checkbox"/> Abruptio placenta <input type="checkbox"/> Placental insufficiency <input type="checkbox"/> Prolapsed cord <input type="checkbox"/> Chorioamnionitis <input type="checkbox"/> Other (Specify) _____ Other Obstetrical or Pregnancy Complications (Specify) _____ Fetal Anomaly (Specify) _____ Fetal Injury (Specify) _____ Fetal Infection (Specify) _____ Other Fetal Conditions/Disorders (Specify) _____ <input type="checkbox"/> Unknown		18b. OTHER SIGNIFICANT CAUSES OR CONDITIONS (SELECT OR SPECIFY ALL OTHER CONDITIONS CONTRIBUTING TO DEATH IN ITEM 18b) Maternal Conditions/Diseases (Specify) _____ Complications of Placenta, Cord, or Membranes <input type="checkbox"/> Rupture of membranes prior to onset of labor <input type="checkbox"/> Abruptio placenta <input type="checkbox"/> Placental insufficiency <input type="checkbox"/> Prolapsed cord <input type="checkbox"/> Chorioamnionitis <input type="checkbox"/> Other (Specify) _____ Other Obstetrical or Pregnancy Complications (Specify) _____ Fetal Anomaly (Specify) _____ Fetal Injury (Specify) _____ Fetal Infection (Specify) _____ Other Fetal Conditions/Disorders (Specify) _____ <input type="checkbox"/> Unknown			
	18c. WEIGHT OF FETUS (grams preferred, specify unit) <input type="checkbox"/> grams <input type="checkbox"/> lb/oz		18e. ESTIMATED TIME OF FETAL DEATH <input type="checkbox"/> Dead at time of first assessment, no labor ongoing <input type="checkbox"/> Dead at time of first assessment, labor ongoing <input type="checkbox"/> Died during labor, after first assessment <input type="checkbox"/> Unknown time of fetal death		18f. WAS AN AUTOPSY PERFORMED? <input type="checkbox"/> Yes <input type="checkbox"/> No <input type="checkbox"/> Planned	
	18d. OBSTETRIC ESTIMATE OF GESTATION AT DELIVERY _____ (completed weeks)				18g. WAS A HISTOLOGICAL PLACENTAL EXAMINATION PERFORMED? <input type="checkbox"/> Yes <input type="checkbox"/> No <input type="checkbox"/> Planned	
					18h. WERE AUTOPSY OR HISTOLOGICAL PLACENTAL EXAMINATION RESULTS USED IN DETERMINING THE CAUSE OF FETAL DEATH? <input type="checkbox"/> Yes <input type="checkbox"/> No	

Mother's Name _____
Mother's Medical Record No. _____

MOTHER

19. MOTHER'S EDUCATION (Check the box that best describes the highest degree or level of school completed at the time of delivery)		20. MOTHER OF HISPANIC ORIGIN? (Check the box that best describes whether the mother is Spanish/Hispanic/Latina. Check the "No" box if mother is not Spanish/Hispanic/Latina)		21. MOTHER'S RACE (Check one or more races to indicate what the mother considers herself to be)																					
<input type="checkbox"/> 8th grade or less <input type="checkbox"/> 9th - 12th grade, no diploma <input type="checkbox"/> High school graduate or GED completed <input type="checkbox"/> Some college credit but no degree <input type="checkbox"/> Associate degree (e.g., AA, AS) <input type="checkbox"/> Bachelor's degree (e.g., BA, AB, BS) <input type="checkbox"/> Master's degree (e.g., MA, MS, MEng, MEd, MSW, MBA) <input type="checkbox"/> Doctorate (e.g., PhD, EdD) or Professional degree (e.g., MD, DDS, DVM, LLB, JD)		<input type="checkbox"/> No, not Spanish/Hispanic/Latina <input type="checkbox"/> Yes, Mexican, Mexican American, Chicana <input type="checkbox"/> Yes, Puerto Rican <input type="checkbox"/> Yes, Cuban <input type="checkbox"/> Yes, other Spanish/Hispanic/Latina (Specify) _____		<input type="checkbox"/> White <input type="checkbox"/> Black or African American <input type="checkbox"/> American Indian or Alaska Native (Name of the enrolled or principal tribe) _____ <input type="checkbox"/> Asian Indian <input type="checkbox"/> Chinese <input type="checkbox"/> Filipino <input type="checkbox"/> Japanese <input type="checkbox"/> Korean <input type="checkbox"/> Vietnamese <input type="checkbox"/> Other Asian (Specify) _____ <input type="checkbox"/> Native Hawaiian <input type="checkbox"/> Guamanian or Chamorro <input type="checkbox"/> Samoan <input type="checkbox"/> Other Pacific Islander (Specify) _____ <input type="checkbox"/> Other (Specify) _____																					
22. MOTHER MARRIED? (At delivery, conception, or anytime between) <input type="checkbox"/> Yes <input type="checkbox"/> No		23a. DATE OF FIRST PRENATAL CARE VISIT _____ / _____ / _____ <input type="checkbox"/> No Prenatal Care MM / DD / YYYY		23b. DATE OF LAST PRENATAL CARE VISIT _____ / _____ / _____ MM / DD / YYYY																					
24. TOTAL NUMBER OF PRENATAL VISITS FOR THIS PREGNANCY _____ (If none, enter "0".)		25. MOTHER'S HEIGHT _____ (feet/inches)		26. MOTHER'S PREPREGNANCY WEIGHT _____ (pounds)																					
27. MOTHER'S WEIGHT AT DELIVERY _____ (pounds)		28. DID MOTHER GET WIC FOOD FOR HERSELF DURING THIS PREGNANCY? <input type="checkbox"/> Yes <input type="checkbox"/> No		29. NUMBER OF PREVIOUS LIVE BIRTHS																					
29a. Now Living Number _____ <input type="checkbox"/> None		29b. Now Dead Number _____ <input type="checkbox"/> None		30. NUMBER OF OTHER PREGNANCY OUTCOMES (spontaneous or induced losses or ectopic pregnancies) 30a. Other Outcomes Number (Do not include this fetus) _____ <input type="checkbox"/> None																					
29c. DATE OF LAST LIVE BIRTH _____ / _____ MM / YYYY		30b. DATE OF LAST OTHER PREGNANCY OUTCOME _____ / _____ MM / YYYY		31. CIGARETTE SMOKING BEFORE AND DURING PREGNANCY For each time period, enter either the number of cigarettes or the number of packs of cigarettes smoked. IF NONE, ENTER "0". Average number of cigarettes or packs of cigarettes smoked per day. <table border="0"> <tr> <td></td> <td># of cigarettes</td> <td>OR</td> <td># of packs</td> </tr> <tr> <td>Three Months Before Pregnancy</td> <td>_____</td> <td>OR</td> <td>_____</td> </tr> <tr> <td>First Three Months of Pregnancy</td> <td>_____</td> <td>OR</td> <td>_____</td> </tr> <tr> <td>Second Three Months of Pregnancy</td> <td>_____</td> <td>OR</td> <td>_____</td> </tr> <tr> <td>Third Trimester of Pregnancy</td> <td>_____</td> <td>OR</td> <td>_____</td> </tr> </table>			# of cigarettes	OR	# of packs	Three Months Before Pregnancy	_____	OR	_____	First Three Months of Pregnancy	_____	OR	_____	Second Three Months of Pregnancy	_____	OR	_____	Third Trimester of Pregnancy	_____	OR	_____
	# of cigarettes	OR	# of packs																						
Three Months Before Pregnancy	_____	OR	_____																						
First Three Months of Pregnancy	_____	OR	_____																						
Second Three Months of Pregnancy	_____	OR	_____																						
Third Trimester of Pregnancy	_____	OR	_____																						
32. DATE LAST NORMAL MENSES BEGAN _____ / _____ / _____ MM / DD / YYYY		33. PLURALITY - Single, Twin, Triplet, etc. (Specify) _____		34. IF NOT SINGLE BIRTH - Born First, Second, Third, etc. (Specify) _____																					
35. MOTHER TRANSFERRED FOR MATERNAL MEDICAL OR FETAL INDICATIONS FOR DELIVERY? <input type="checkbox"/> Yes <input type="checkbox"/> No IF YES, ENTER NAME OF FACILITY MOTHER TRANSFERRED FROM: _____																									

MEDICAL AND HEALTH INFORMATION

36. RISK FACTORS IN THIS PREGNANCY (Check all that apply): Diabetes <input type="checkbox"/> Prepregnancy (Diagnosis prior to this pregnancy) <input type="checkbox"/> Gestational (Diagnosis in this pregnancy) Hypertension <input type="checkbox"/> Prepregnancy (Chronic) <input type="checkbox"/> Gestational (PIH, preeclampsia) <input type="checkbox"/> Eclampsia <input type="checkbox"/> Previous preterm birth <input type="checkbox"/> Other previous poor pregnancy outcome (Includes perinatal death, small-for-gestational age/intrauterine growth restricted birth) <input type="checkbox"/> Pregnancy resulted from infertility treatment-If yes, check all that apply: <input type="checkbox"/> Fertility-enhancing drugs, Artificial insemination or Intrauterine insemination <input type="checkbox"/> Assisted reproductive technology (e.g., in vitro fertilization (IVF), gamete intrafallopian transfer (GIFT)) <input type="checkbox"/> Mother had a previous cesarean delivery If yes, how many _____ <input type="checkbox"/> None of the above		37. INFECTIONS PRESENT AND/OR TREATED DURING THIS PREGNANCY (Check all that apply) <input type="checkbox"/> Gonorrhea <input type="checkbox"/> Syphilis <input type="checkbox"/> Chlamydia <input type="checkbox"/> Listeria <input type="checkbox"/> Group B Streptococcus <input type="checkbox"/> Cytomegalovirus <input type="checkbox"/> Parvovirus <input type="checkbox"/> Toxoplasmosis <input type="checkbox"/> None of the above <input type="checkbox"/> Other (Specify) _____	
38. METHOD OF DELIVERY A. Was delivery with forceps attempted but unsuccessful? <input type="checkbox"/> Yes <input type="checkbox"/> No B. Was delivery with vacuum extraction attempted but unsuccessful? <input type="checkbox"/> Yes <input type="checkbox"/> No C. Fetal presentation at delivery <input type="checkbox"/> Cephalic <input type="checkbox"/> Breech <input type="checkbox"/> Other D. Final route and method of delivery (Check one) <input type="checkbox"/> Vaginal/Spontaneous <input type="checkbox"/> Vaginal/Forceps <input type="checkbox"/> Vaginal/Vacuum <input type="checkbox"/> Cesarean If cesarean, was a trial of labor attempted? <input type="checkbox"/> Yes <input type="checkbox"/> No E. Hysterotomy/Hysterectomy <input type="checkbox"/> Yes <input type="checkbox"/> No		39. MATERNAL MORBIDITY (Check all that apply) (Complications associated with labor and delivery) <input type="checkbox"/> Maternal transfusion <input type="checkbox"/> Third or fourth degree perineal laceration <input type="checkbox"/> Ruptured uterus <input type="checkbox"/> Unplanned hysterectomy <input type="checkbox"/> Admission to intensive care unit <input type="checkbox"/> Unplanned operating room procedure following delivery <input type="checkbox"/> None of the above	
40. CONGENITAL ANOMALIES OF THE FETUS (Check all that apply) <input type="checkbox"/> Anencephaly <input type="checkbox"/> Meningocele/Spina bifida <input type="checkbox"/> Cyanotic congenital heart disease <input type="checkbox"/> Congenital diaphragmatic hernia <input type="checkbox"/> Omphalocele <input type="checkbox"/> Gastroschisis <input type="checkbox"/> Limb reduction defect (excluding congenital amputation and dwarfing syndromes) <input type="checkbox"/> Cleft Lip with or without Cleft Palate <input type="checkbox"/> Cleft Palate alone <input type="checkbox"/> Down Syndrome <input type="checkbox"/> Karyotype confirmed <input type="checkbox"/> Karyotype pending <input type="checkbox"/> Suspected chromosomal disorder <input type="checkbox"/> Karyotype confirmed <input type="checkbox"/> Karyotype pending <input type="checkbox"/> Hypospadias <input type="checkbox"/> None of the anomalies listed above			

NOTE: This recommended standard fetal death report is the result of an extensive evaluation process. Information on the process and resulting recommendations as well as plans for future activities is available on the Internet at: <https://www.cdc.gov/nchs/nvss/revisions-of-the-us-standard-certificates-and-reports.htm>.

Table A. Period of gestation and weight minimums at which fetal death reporting is required, by reporting areas: United States, 2024

Area	All periods of gestation	12 weeks	16 weeks	20 weeks	20 weeks or 350 grams	20 weeks or 400 grams	20 weeks or 500 grams	350 grams
Alabama				X				
Alaska				X				
Arizona					X			
Arkansas		X						
California				X				
Colorado	X ¹							
Connecticut				X				
Delaware								X ²
District of Columbia							X	
Florida				X				
Georgia	X							
Hawaii	X							
Idaho					X			
Illinois				X				
Indiana				X				
Iowa				X				
Kansas				X				
Kentucky					X			
Louisiana					X			
Maine				X				
Maryland				X ³				
Massachusetts					X			
Michigan						X		
Minnesota				X				
Mississippi					X			
Missouri					X			
Montana								X ²
Nebraska				X				
Nevada				X				
New Hampshire					X			
New Jersey				X				
New Mexico				X ³				
New York	X							
New York (excluding New York City)	X							
New York City	X ¹							
North Carolina				X				
North Dakota				X				
Ohio				X				
Oklahoma		X ⁴						
Oregon				X				
Pennsylvania			X					
Rhode Island	X							
South Carolina					X			
South Dakota				X				
Tennessee					X			
Texas				X				
Utah				X				
Vermont				X ⁵				
Virginia	X							
Washington				X				
West Virginia				X				
Wisconsin					X			
Wyoming				X				
American Samoa	X							
Guam					X			
Northern Marianas								X ²
Puerto Rico					X			
Virgin Islands	X							

1 Although State law requires the reporting of fetal deaths of all periods of gestation, only data for fetal deaths of 20 weeks of gestation or more are provided to NCHS.

2 If weight is unknown, 20 completed weeks of gestation or more.

3 If gestational age is unknown, weight of 350 grams or more.

4 Although State law requires the reporting of fetal deaths at 12 weeks of gestation or more, only data for fetal deaths of 20 weeks of gestation or more are provided to NCHS.

5 If gestational age is unknown, weight of 400 grams or more, 15 ounces or more.

SOURCE: National Center for Health Statistics, National Vital Statistics System.

Table B. Percent of fetal death records on which specified items were not stated: United States and each state and territory, New York City, and the District of Columbia, 2024

[By place of residence]

[Fetal deaths include only those with stated or presumed period of gestation of 20 weeks or more.]

Reporting areas	Total Fetal deaths	Time of birth	Mother's birthplace	Education of mother	Father's age\2	Mother's Hispanic origin
Total of reporting areas ¹	19,837	2.0	5.1	13.8	20.1	3.9
Alabama	460	-	-	3.0	62.8	-
Alaska	43	2.3	4.7	11.6	32.6	2.3
Arizona	479	2.5	1.7	5.0	13.6	2.7
Arkansas	246	1.2	0.4	8.5	49.6	-
California	1,926	1.3	4.2	15.4	11.2	6.5
Colorado	337	-	27.3	43.3	22.3	0.9
Connecticut	168	3.6	3.0	39.3	9.5	5.4
Delaware	62	1.6	-	16.1	30.6	-
District of Columbia	60	3.3	40.0	45.0	68.3	11.7
Florida	1,479	4.0	9.0	13.3	16.6	8.0
Georgia	908	0.6	0.6	21.8	63.1	1.3
Hawaii	87	16.1	32.2	36.8	40.2	32.2
Idaho	121	-	0.8	5.0	11.6	2.5
Illinois	739	3.7	6.9	19.2	16.5	0.1
Indiana	563	0.4	5.9	6.6	31.8	1.6
Iowa	165	0.6	0.6	21.2	8.5	0.6
Kansas	165	1.8	1.8	3.6	11.5	1.8
Kentucky	269	0.4	1.1	4.5	48.0	1.1
Louisiana	315	0.3	0.3	4.1	23.5	-
Maine	41	4.9	4.9	14.6	9.8	19.5
Maryland	388	2.8	11.6	24.5	19.6	11.9
Massachusetts	258	2.3	17.8	41.1	34.1	21.7
Michigan	567	0.4	4.9	6.0	14.3	1.6
Minnesota	300	0.7	2.0	4.3	5.3	2.7
Mississippi	264	0.4	2.7	9.1	37.1	1.1
Missouri	348	0.9	4.9	5.5	11.8	2.6
Montana	54	1.9	-	3.7	5.6	-
Nebraska	113	2.7	3.5	38.1	8.8	1.8
Nevada	243	1.6	2.1	7.4	14.4	-
New Hampshire	37	-	8.1	2.7	24.3	8.1
New Jersey	676	5.5	2.8	10.2	14.2	3.6
New Mexico	82	-	12.2	7.3	51.2	4.9
New York (excluding New York City)	535	10.7	1.5	34.8	59.6	17.0
New York City	631	4.4	10.3	21.6	45.6	7.0
North Carolina	721	0.4	3.6	5.3	40.5	1.7
North Dakota	63	-	4.8	4.8	15.9	4.8
Ohio	702	0.6	5.4	6.1	14.4	1.6
Oklahoma	296	0.3	2.4	4.7	10.1	2.7
Oregon	168	3.6	2.4	13.7	16.1	6.0
Pennsylvania	611	2.8	3.9	15.9	14.6	0.2
Rhode Island	51	2.0	-	15.7	51.0	13.7
South Carolina	334	0.3	-	6.6	18.6	1.8
South Dakota	63	-	1.6	4.8	12.7	-
Tennessee	509	0.6	8.6	13.8	44.4	2.2
Texas	1,631	-	4.2	10.4	12.9	1.6
Utah	258	0.8	0.4	6.6	5.8	-
Vermont	16	-	-	6.3	6.3	-
Virginia	506	5.7	3.4	26.1	59.9	4.5
Washington	398	0.3	8.5	4.0	8.3	2.5
West Virginia	57	-	8.8	8.8	17.5	1.8
Wisconsin	293	1.0	0.7	6.5	47.4	0.7
Wyoming	31	-	6.5	12.9	29.0	-
American Samoa	---	---	---	---	---	---
Guam	30	-	13.3	10.0	60.0	3.3
Northern Marianas	---	---	---	---	---	---
Puerto Rico	207	1.0	-	0.5	22.2	-
Virgin Islands	---	---	---	---	---	---

See footnotes at end of table.

Table B. Percent of fetal death records on which specified items were not stated: United States and each state and territory, New York City, and the District of Columbia, 2024
 [By place of residence]

Reporting areas	Place of delivery\3	Attendant at delivery\4	Month prenatal care began\5	Mother's height\6	Mother's pre-pregnancy weight\7	Did mother get WIC food for herself during this pregnancy\8	Live-birth order
Total of reporting areas ¹	0.1	0.7	11.8	6.4	12.2	16.0	6.0
Alabama	-	-	3.5	1.5	5.0	2.2	-
Alaska	-	-	7.0	4.7	9.3	18.6	9.3
Arizona	0.4	0.2	4.6	2.5	6.7	7.9	3.8
Arkansas	-	-	1.6	0.8	5.7	2.0	-
California	-	-	15.7	8.3	18.4	26.9	7.1
Colorado	---	3.9	59.9	30.9	44.8	51.6	26.7
Connecticut	-	-	10.7	6.5	4.8	36.3	8.9
Delaware	-	8.1	19.4	6.5	19.4	22.6	8.1
District of Columbia	-	-	21.7	8.3	26.7	28.3	1.7
Florida	0.1	0.1	17.8	12.6	16.8	20.1	9.1
Georgia	-	-	22.9	9.3	15.0	21.3	11.0
Hawaii	1.1	1.1	54.0	35.6	50.6	51.7	29.9
Idaho	-	-	5.8	2.5	5.0	16.5	7.4
Illinois	0.7	0.8	6.9	3.5	13.7	2.7	0.8
Indiana	-	1.2	5.0	3.4	6.4	44.4	4.3
Iowa	-	-	-	0.6	7.3	32.7	-
Kansas	-	-	4.8	1.8	5.5	10.3	1.8
Kentucky	-	-	1.5	0.7	3.0	5.6	0.4
Louisiana	-	1.3	4.1	0.3	4.8	9.5	-
Maine	-	-	17.1	12.2	12.2	29.3	9.8
Maryland	-	-	12.6	6.2	13.9	31.2	0.5
Massachusetts	0.4	-	5.8	2.7	13.6	43.4	1.2
Michigan	-	0.4	5.8	1.9	10.6	12.0	1.9
Minnesota	-	0.7	3.7	3.0	7.3	4.3	0.3
Mississippi	-	1.5	5.3	1.9	4.2	4.5	0.8
Missouri	0.6	-	5.2	2.9	4.6	9.8	1.7
Montana	-	-	1.9	-	5.6	3.7	-
Nebraska	0.9	0.9	8.0	8.0	9.7	18.6	5.3
Nevada	0.8	-	7.8	2.5	5.3	0.4	11.1
New Hampshire	-	-	2.7	2.7	8.1	8.1	2.7
New Jersey	-	---	7.7	3.7	12.0	12.1	3.1
New Mexico	-	-	11.0	8.5	17.1	9.8	-
New York (excluding New York City)	0.6	-	30.8	19.4	26.2	43.0	16.6
New York City	-	-	30.0	3.6	12.7	---	10.1
North Carolina	-	-	1.5	1.2	4.4	9.3	3.3
North Dakota	-	1.6	12.7	-	19.0	17.5	-
Ohio	0.3	-	5.4	3.8	9.1	5.6	0.9
Oklahoma	-	-	10.5	5.7	13.5	11.5	31.1
Oregon	-	-	5.4	7.1	6.0	10.7	4.2
Pennsylvania	-	-	14.1	8.5	15.1	26.0	5.6
Rhode Island	-	-	25.5	7.8	9.8	17.6	7.8
South Carolina	-	3.0	4.2	0.6	4.5	12.0	3.6
South Dakota	-	-	12.7	3.2	6.3	6.3	3.2
Tennessee	-	-	6.3	2.9	6.5	15.1	0.8
Texas	0.2	2.9	15.8	6.3	6.4	1.2	7.1
Utah	-	-	5.8	2.3	10.1	1.2	1.2
Vermont	-	-	-	-	6.3	12.5	-
Virginia	-	1.2	26.5	17.2	31.8	31.6	0.6
Washington	0.5	0.8	12.8	4.8	13.6	8.0	20.1
West Virginia	-	-	1.8	1.8	7.0	15.8	-
Wisconsin	-	-	2.0	1.0	6.1	8.5	0.3
Wyoming	-	9.7	25.8	3.2	9.7	9.7	3.2
American Samoa	---	---	---	---	---	---	---
Guam	-	-	20.0	50.0	56.7	56.7	23.3
Northern Marianas	---	---	---	---	---	---	---
Puerto Rico	-	2.4	2.4	1.0	0.5	2.4	0.5
Virgin Islands	---	---	---	---	---	---	---

See footnotes at end of table.

Table B. Percent of fetal death records on which specified items were not stated: United States and each state and territory, New York City, and the District of Columbia, 2024
 [By place of residence]

Reporting areas	Birth interval	Cigarette smoking before and during pregnancy	Risk Factors in this Pregnancy\9	Method of Delivery	
				Fetal presentation	Final route and method of delivery
Total of reporting areas ¹	11.9	9.0	5.0	11.4	4.9
Alabama	2.8	2.0	0.4	1.7	0.2
Alaska	11.6	30.2	4.7	2.3	4.7
Arizona	5.8	5.4	4.4	7.1	1.9
Arkansas	5.3	1.2	-	-	-
California	14.7	14.6	7.0	27.4	6.6
Colorado	40.4	46.3	-	28.8	28.5
Connecticut	16.7	1.2	1.8	4.2	2.4
Delaware	11.3	9.7	9.7	4.8	4.8
District of Columbia	11.7	11.7	-	3.3	-
Florida	21.4	10.3	12.5	25.2	15.8
Georgia	16.1	10.6	14.2	16.2	4.5
Hawaii	37.9	42.5	4.6	33.3	25.3
Idaho	8.3	7.4	1.7	8.3	2.5
Illinois	8.4	2.7	-	10.8	8.3
Indiana	9.6	11.7	8.3	23.6	7.6
Iowa	3.6	-	-	1.2	0.6
Kansas	5.5	4.2	-	2.4	1.8
Kentucky	3.0	3.3	1.5	3.7	0.7
Louisiana	6.7	2.5	-	-	0.3
Maine	12.2	4.9	-	4.9	-
Maryland	4.9	0.8	0.3	1.0	-
Massachusetts	6.6	4.3	0.8	0.8	4.3
Michigan	6.7	6.0	4.9	6.9	0.9
Minnesota	3.7	1.3	0.7	4.0	1.0
Mississippi	3.0	3.8	3.4	4.5	1.1
Missouri	7.8	4.3	-	7.8	1.7
Montana	1.9	1.9	1.9	5.6	1.9
Nebraska	25.7	10.6	0.9	1.8	1.8
Nevada	9.1	2.9	-	5.3	1.6
New Hampshire	5.4	-	-	-	-
New Jersey	8.3	4.9	2.7	11.4	0.7
New Mexico	8.5	11.0	2.4	2.4	2.4
New York (excluding New York City)	26.0	20.7	3.4	24.7	20.4
New York City	23.0	11.3	18.1	17.7	4.1
North Carolina	7.9	0.1	2.5	6.8	1.0
North Dakota	4.8	1.6	-	11.1	-
Ohio	13.7	1.1	-	1.3	1.1
Oklahoma	18.2	10.1	5.4	0.7	0.7
Oregon	4.8	4.2	1.2	1.2	-
Pennsylvania	5.9	25.4	8.7	11.5	9.2
Rhode Island	11.8	19.6	15.7	15.7	5.9
South Carolina	7.5	4.2	3.3	1.2	0.3
South Dakota	7.9	4.8	-	4.8	4.8
Tennessee	7.3	6.9	-	-	0.2
Texas	11.5	14.0	7.1	0.8	1.8
Utah	5.4	1.9	-	0.8	0.8
Vermont	-	-	-	-	-
Virginia	4.0	1.0	0.2	20.9	0.2
Washington	23.4	8.3	5.0	13.6	6.8
West Virginia	-	3.5	-	-	-
Wisconsin	1.7	3.8	2.4	5.1	3.4
Wyoming	29.0	16.1	-	6.5	6.5
American Samoa	---	---	---	---	---
Guam	26.7	43.3	40.0	30.0	6.7
Northern Marianas	---	---	---	---	---
Puerto Rico	7.2	1.0	1.9	0.5	0.5
Virgin Islands	---	---	---	---	---

See footnotes at end of table.

Table B. Percent of fetal death records on which specified items were not stated: United States and each state and territory, New York City, and the District of Columbia, 2024
 [By place of residence]

Reporting areas	Maternal morbidity	Weight of fetus	Obstetric estimate of gestation	Cause of death\10
Total of reporting areas ¹	5.3	7.4	0.6	32.0
Alabama	0.2	10.4	0.4	37.6
Alaska	4.7	2.3	-	34.9
Arizona	4.2	1.7	0.2	50.3
Arkansas	-	2.4	0.4	43.5
California	14.3	6.5	1.4	27.8
Colorado	-	39.5	-	39.8
Connecticut	0.6	8.9	-	20.8
Delaware	4.8	3.2	-	32.3
District of Columbia	-	-	-	21.7
Florida	16.5	13.0	2.0	19.6
Georgia	8.0	13.3	0.3	63.1
Hawaii	5.7	31.0	1.1	43.7
Idaho	0.8	0.8	0.8	22.3
Illinois	-	10.4	0.3	21.2
Indiana	4.1	6.2	-	34.6
Iowa	-	4.8	1.2	35.8
Kansas	-	3.6	1.8	25.5
Kentucky	-	1.5	-	47.2
Louisiana	-	4.8	0.6	20.0
Maine	-	7.3	4.9	22.0
Maryland	0.3	1.5	0.3	40.7
Massachusetts	0.8	5.0	-	24.8
Michigan	3.9	2.1	0.2	52.7
Minnesota	0.7	2.7	0.3	37.7
Mississippi	3.8	1.9	1.1	57.2
Missouri	-	3.7	1.7	36.5
Montana	-	5.6	-	29.6
Nebraska	0.9	10.6	1.8	23.9
Nevada	0.4	2.5	-	51.0
New Hampshire	-	-	-	32.4
New Jersey	3.6	10.2	1.5	44.4
New Mexico	1.2	8.5	-	24.4
New York (excluding New York City)	4.5	20.9	0.4	49.3
New York City	21.4	11.6	0.2	55.6
North Carolina	1.5	2.4	0.1	41.3
North Dakota	-	-	-	60.3
Ohio	1.6	3.1	-	32.8
Oklahoma	7.1	6.1	0.3	18.2
Oregon	0.6	3.0	1.2	50.6
Pennsylvania	8.0	12.3	0.2	26.0
Rhode Island	11.8	7.8	-	39.2
South Carolina	6.6	0.9	0.9	40.7
South Dakota	-	7.9	1.6	19.0
Tennessee	-	1.2	0.4	42.6
Texas	2.9	1.4	0.1	25.0
Utah	-	12.4	-	36.4
Vermont	-	6.3	-	18.8
Virginia	0.2	6.1	1.4	44.3
Washington	-	10.6	0.5	29.1
West Virginia	-	1.8	-	38.6
Wisconsin	0.3	5.1	-	47.1
Wyoming	-	12.9	-	25.8
American Samoa	---	---	---	---
Guam	40.0	-	3.3	10.0
Northern Marianas	---	---	---	---
Puerto Rico	4.3	1.9	-	4.8
Virgin Islands	---	---	---	---

0.0 Quantity more than zero but less than 0.05.

---Data not available.

- Quantity zero.

NOTE: Data for American Samoa, the Commonwealth of Northern Marianas, and the Virgin Islands were excluded due to small numbers. Reporting areas with levels of unknown data for an item of 50% and higher (based on counts by residence) are not included in the U.S. totals and are flagged in the file as not reporting.

1\Excludes data for American Samoa, Guam, the Commonwealth of the Northern Marianas, Puerto Rico, and the Virgin Islands.

2\Alabama, the District of Columbia, Georgia, New Mexico, New York, Rhode Island, Virginia, and Guam reported father's age for 2024 but had an unknown level of 50% or higher and were flagged as not reporting.

3\Colorado reported place of delivery for 2024, but a system error resulted in some records being miscoded for this item. As a result, this item was flagged as not reporting for this state.

4\New Jersey reported attendant at delivery for 2024, but a system error resulted in some records being miscoded for this item. As a result, this item was flagged as not reporting for this state.

5\Colorado and Hawaii reported date of first prenatal care visit for 2024 but had an unknown level of 50% or higher and were flagged as not reporting.

6\Guam reported mother's height for 2024 but had an unknown level of 50% or higher and was flagged as not reporting.

7\Hawaii and Guam reported mother's pre-pregnancy weight for 2024 but had an unknown level of 50% or higher and were flagged as not reporting.

8\New York City does not report WIC and Colorado and Hawaii reported this item for 2024 but had unknown levels of 50% or higher and were flagged as not reporting

9\North Carolina reported the risk factors pregnancy resulted from infertility treatment, assisted reproductive technology, and fertility enhancing drugs, artificial insemination, or intrauterine insemination for 2024, but a system error resulted in some records being miscoded for these items. As a result, these three risk factor items were flagged as not reporting for this state.

10\Arizona, Georgia, Michigan, Mississippi, Nevada, North Dakota, Oregon, and New York City reported cause of death for 2024 but had an unknown level of 50% or higher and were flagged as not reporting.