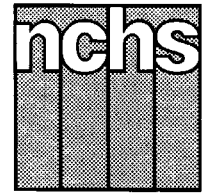


Monthly Vital Statistics Report



Provisional Data From the CENTERS FOR DISEASE CONTROL AND PREVENTION/National Center for Health Statistics

Births, Marriages, Divorces, and Deaths for September 1996

Births

According to provisional reports, an estimated 342,000 births occurred in the United States during September 1996. This was an increase of 3 percent from the provisional number of births reported for September 1995 (331,000). The birth rate, 15.7 live births per 1,000 population, was 3 percent higher than the rate of 15.3 for September 1995. The fertility rate, 69.9 live births per 1,000 women 15–44 years, was 3 percent higher than the comparable rate for September 1995 (67.6). The seasonally adjusted fertility rate (65.8) was also 3 percent higher than the comparable rate for September 1995 (63.7).

During the first three quarters of 1996, an estimated 2,955,000 births occurred, a slight decrease from the 2,959,000 reported for the first three quarters of 1995. The birth rate during this period declined by 1 percent from 15.1 in 1995 to 14.9 in 1996.

An estimated 3,889,000 live births occurred in the 12-month period ending with September 1996, a decline of 1 percent from the 3,925,000 births reported for the same period a year earlier. The birth rate of 14.7 was 2 percent lower than the rate of 15.0 reported for the preceding 12-month period. The fertility rate for the most recent 12-month period was 65.3, 1 percent lower than the rate for the 12

months ending with September 1995 (66.1). These lower rates continue the generally downward trend observed since early 1991.

Natural increase

As a result of natural increase, the excess of births over deaths, an estimated 161,000 people, or 7.4 persons per 1,000 population, were added to the population during September 1996.

For the 12-month period ending with September 1996, 1,584,000 persons were added to the population. This represented a rate of natural increase of 6.0, 3 percent lower than the rate of 6.2 for the preceding

Provisional Vital Statistics for the United States

[Rates for infant deaths are deaths under 1 year per 1,000 live births; fertility rates are live births per 1,000 women aged 15–44 years; all other rates are per 1,000 total population. Data are subject to monthly reporting variation; see [Technical notes](#)]

Item	September				January–September				12 months ending with September				
	Number		Rate		Number		Rate		Number		Rate		
	1996	1995	1996	1995	1996	1995	1996	1995	1996	1995	1996	1995	1994
Live births	342,000	331,000	15.7	15.3	2,955,000	2,959,000	14.9	15.1	3,889,000	3,925,000	14.7	15.0	15.4
Fertility rate	69.9	67.6	66.3	66.6	65.3	66.1	67.4
Deaths	181,000	178,000	8.3	8.2	1,731,000	1,735,000	8.7	8.8	2,305,000	2,296,000	8.7	8.8	8.8
Infant deaths	2,300	2,200	6.9	6.9	20,900	22,100	7.2	7.5	28,200	29,700	7.3	7.6	8.0
Natural increase	161,000	153,000	7.4	7.1	1,224,000	1,224,000	6.2	6.3	1,584,000	1,629,000	6.0	6.2	6.6
Marriages	219,000	219,000	10.1	10.1	1,739,000	1,768,000	8.9	9.1	2,307,000	2,344,000	8.7	8.9	9.0
Divorces	92,000	99,000	4.2	4.6	867,000	883,000	4.4	4.5	1,153,000	1,183,000	4.4	4.5	4.6
Population base (in millions)	265.6	263.2	264.6	262.2	260.0

... Category not applicable.

NOTES: Figures include revisions received from the States. Twelve-month figures for the current year reflect revisions received for previous months, and figures for earlier years may differ from those previously published.



U.S. DEPARTMENT OF HEALTH AND HUMAN SERVICES
Centers for Disease Control and Prevention
National Center for Health Statistics



12-month period. The decline in the rate of natural increase was due to a larger decrease in the birth rate than the decrease in the death rate.

Marriages

Approximately 219,000 couples married in September 1996, the same number that married in September 1995. Also, the marriage rate per 1,000 population for the month of September was the same for 1995 and 1996 (10.1).

The number of marriages performed in the the first three quarters of 1996 (1,739,000) was 2 percent lower than the number performed in the same period a year earlier (1,768,000). The marriage rate for the 9-month period was also 2 percent lower in 1996 (8.9) than in 1995 (9.1).

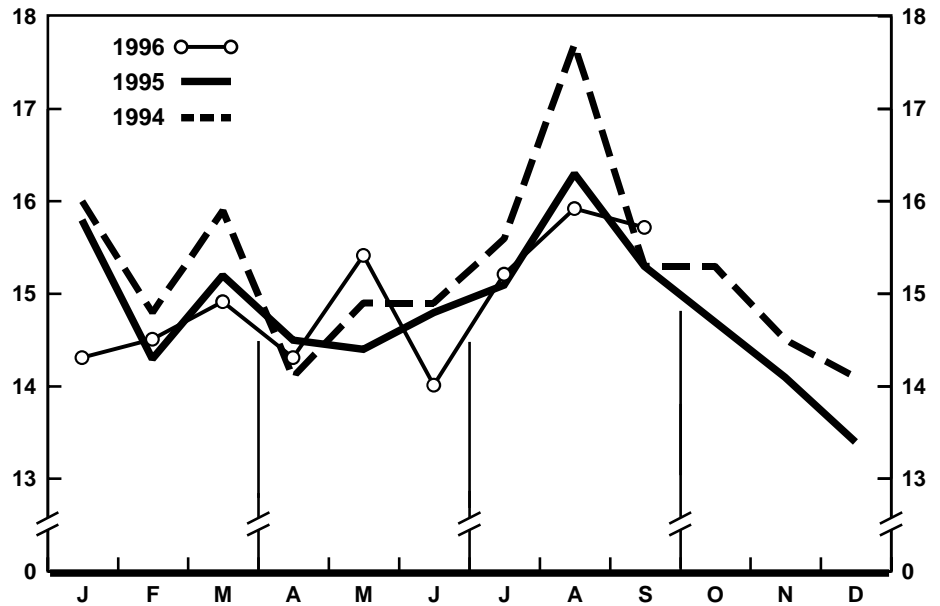
The number of marriages performed during the 12 months ending with September 1996 (2,307,000) was 2 percent lower than the number performed in the comparable period a year earlier (2,344,000). The marriage rate dropped from 8.9 for the period ending with September 1995 to 8.7 for the period ending with September 1996—also a 2-percent decline.

Divorces

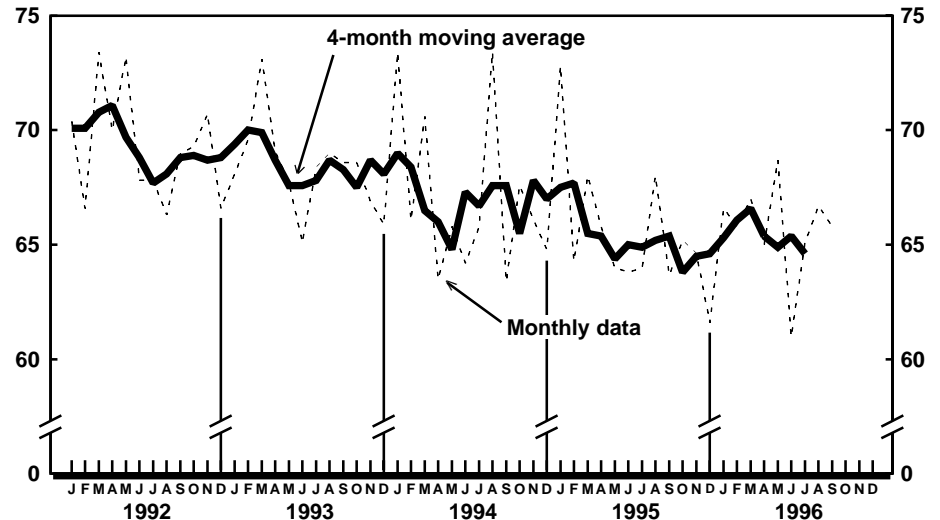
An estimated 92,000 divorces were granted in September 1996, 7 percent fewer than the number granted in September a year earlier (99,000). The divorce rate per 1,000 population for September decreased 9 percent, from 4.6 in 1995 to 4.2 in 1996.

The number and rate of divorces for the first three quarters of 1996 were 2 percent lower than for the same period in 1995. The number of divorces for the 9-month period dropped from 883,000 in 1995 to 867,000 in 1996, while the rate declined from 4.5 in 1995 to 4.4 in 1996.

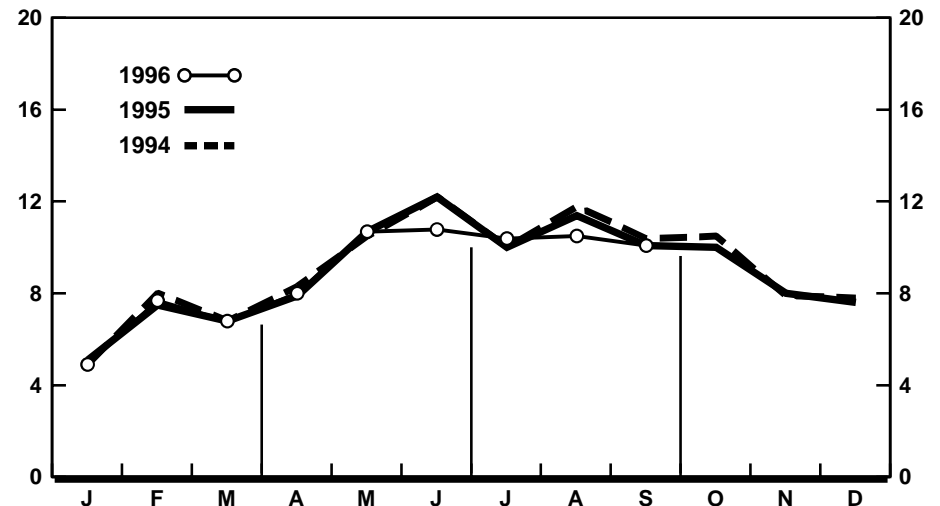
Approximately 1,153,000 couples divorced during the 12-month period ending with September 1996, a 3-percent decline from the number for the same period a year earlier (1,183,000). The divorce rate for the current 12-month period (4.4) was 2 percent lower than the rate for the same period ending with September 1995 (4.5).



Provisional birth rates per 1,000 population by month: United States, 1994-96



Provisional seasonally adjusted fertility rates per 1,000 women aged 15-44 years: United States, 1992-96



Provisional marriage rates per 1,000 population by month: United States, 1994-96

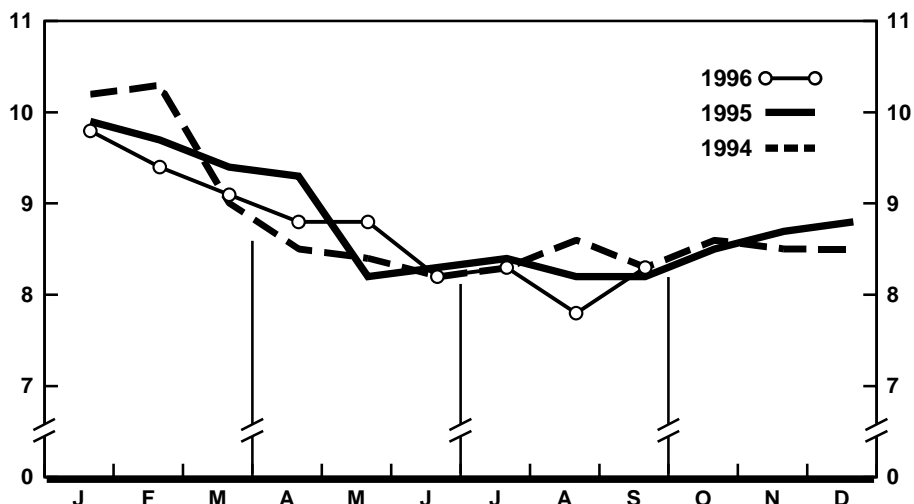
Deaths

For September 1996 there were an estimated 181,000 deaths in the United States. The death rate was 8.3 deaths per 1,000 population, 1 percent higher than the rate of 8.2 for September a year earlier. Among the 181,000 deaths for September 1996 were 2,300 deaths at ages under 1 year.

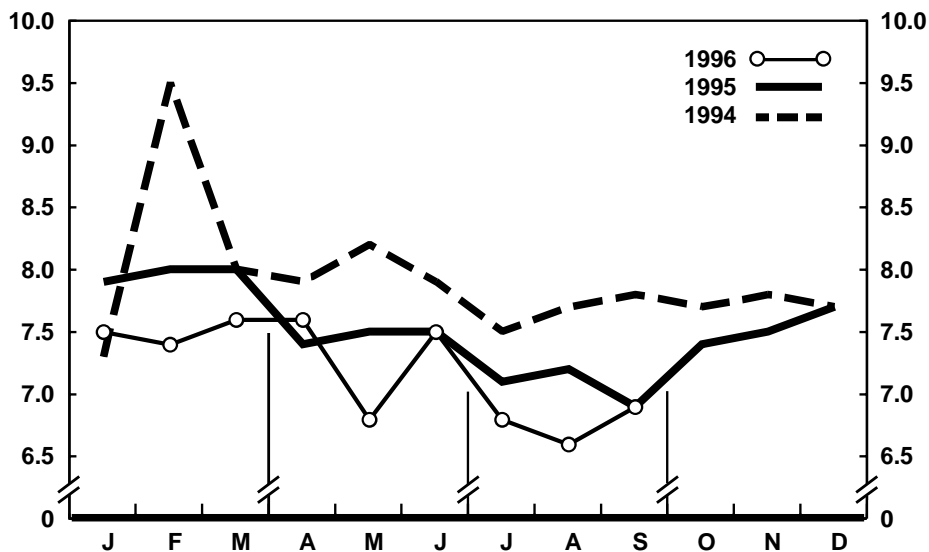
According to provisional statistics, there were 1,731,000 deaths during the first 9 months of 1996, a decrease of less than 1 percent from the number estimated for January–September 1995 (1,735,000). The death rate, 8.7 per 1,000 population, was 1 percent lower than the rate for January–September 1995 (8.8). Among the 1,731,000 deaths for January–September 1996 were 20,900 deaths at ages under 1 year, yielding an infant mortality rate of 7.2 per 1,000 live births. This rate was 4 percent lower than the rate of 7.5, which was the rate for the first 9 months of 1995.

The death rate for the 12 months ending with September 1996 was 8.7 deaths per 1,000 population, 1 percent lower than the rate of 8.8 for the comparable 12-month period a year earlier. The infant mortality rate for this 12-month period was 7.3 per 1,000 live births, 4 percent lower than the rate of 7.6 for the 12 months ending with September 1995.

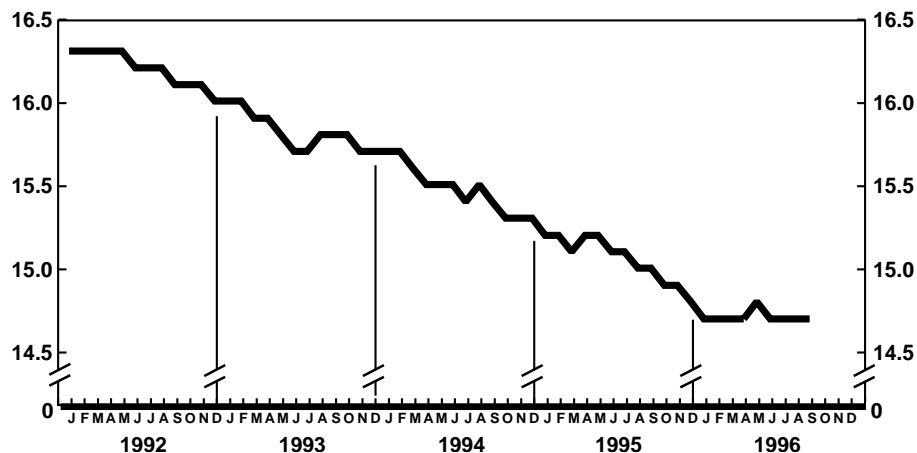
Current Mortality Sample, 12 months ending with August 1996—The provisional death rate for the 12 months ending with August 1996 was 870.7 per 100,000 population, a decrease of less than 1 percent from the rate of 876.6 for the 12-month period ending August 1995. The provisional age-adjusted death rate for the 12-month period ending with August 1996 was 494.3 per 100,000 U.S. standard million population, 2 percent lower than the rate of 504.9 for the 12-month period ending with August 1995. The age-adjusted death rates control for changes and variations in the age composition of the population; therefore, they are better indicators than crude rates for showing changes in mortality risk over time and for showing differences between race-sex groups within the population. Among the four race-sex groups, the estimated age-adjusted death rate decreased for white males, black males, and black females. By age the death rate for the total population



Provisional death rates per 1,000 population by month: United States, 1994–96



Provisional infant mortality rates per 1,000 live births by month: United States, 1994–96



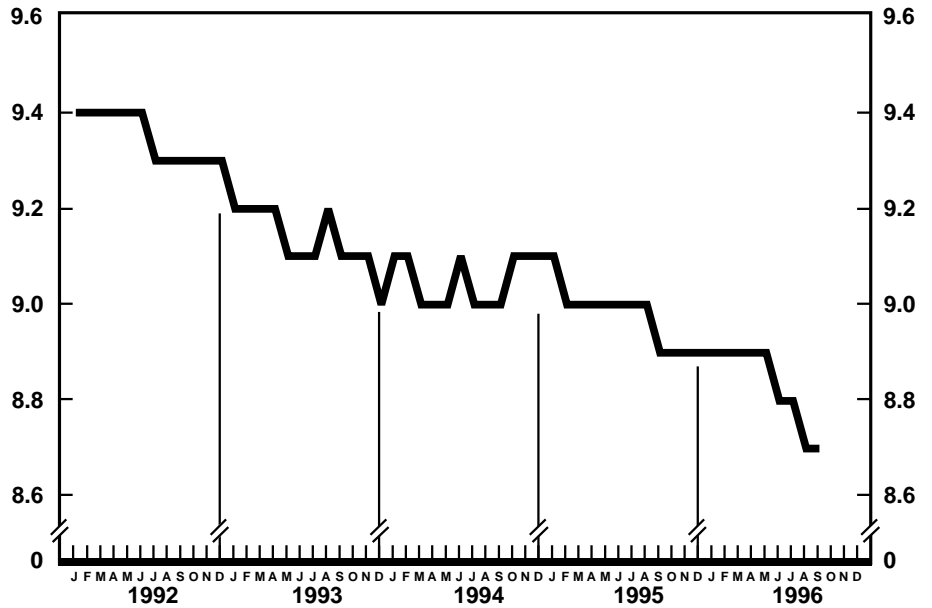
Provisional birth rates per 1,000 population for successive 12-month periods ending with month indicated: United States, 1992–96

decreased for the age groups under 1 year, 1-4 years, 25-34 years, 35-44 years, 45-54 years, 65-74 years, and 75-84 years of age. The death rate increased for the age group 5-14 years of age.

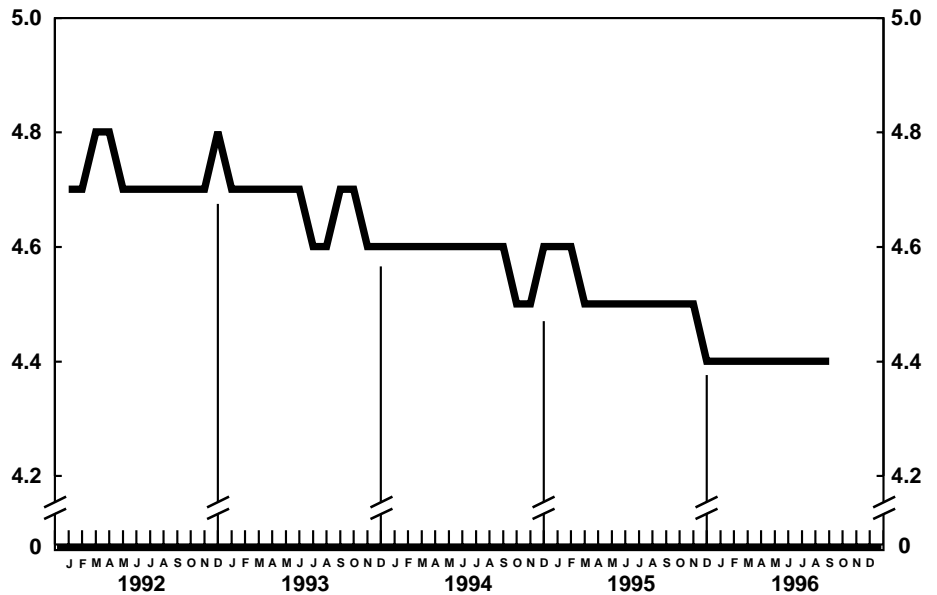
Among the major causes of death, the estimated death rate decreased between the two successive 12-month periods for Human immunodeficiency virus infection, Malignant neoplasms of genital organs, Suicide, Chronic liver disease and cirrhosis, Homicide and legal intervention, and Atherosclerosis. The death rate increased between the two successive 12-month periods for Accidents and adverse effects and Alzheimer's disease. The increase for Alzheimer's disease may reflect changes in diagnostic practices rather than real increases in mortality from this cause.

The death rate for injury by firearms for the 12 months ending with August 1996 was 13.2 per 100,000 population, 5 percent lower than the rate of 13.9 for the comparable 12-month period a year earlier.

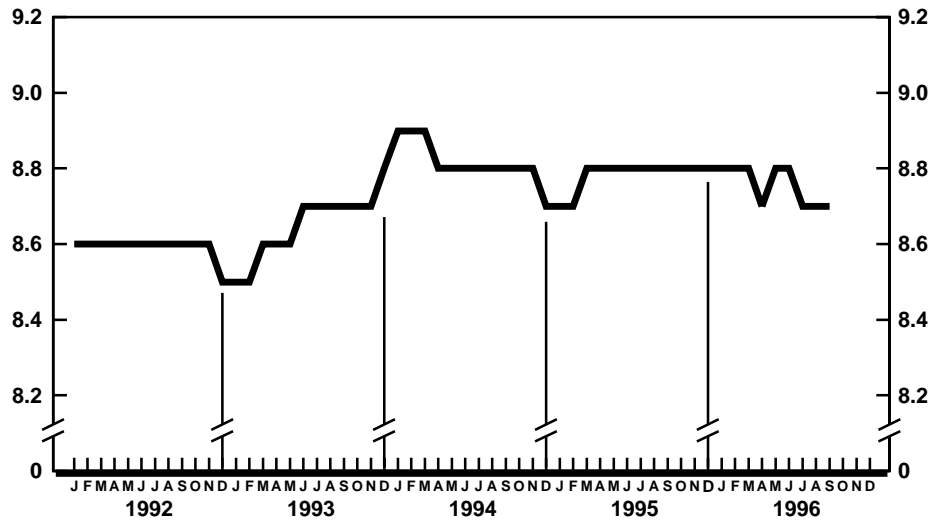
The infant mortality rate for the 12 months ending with August 1996 was 728.6 per 100,000 live births, 5 percent lower than the rate of 767.0 for the same 12-month period a year earlier. For infants under 28 days of age, the 12-month rate ending August 1996 was 480.2 compared with a rate of 487.6 for the 12-month period a year earlier. The change in the mortality rate for infants under 28 days of age was not statistically significant. The infant mortality rate for infants aged 28 days to 11 months was 248.4, 11 percent lower than the rate of 278.1 for the 12-month period a year earlier. Among causes of infant death, the infant mortality rate decreased between the two successive 12-month periods for Sudden infant death syndrome.



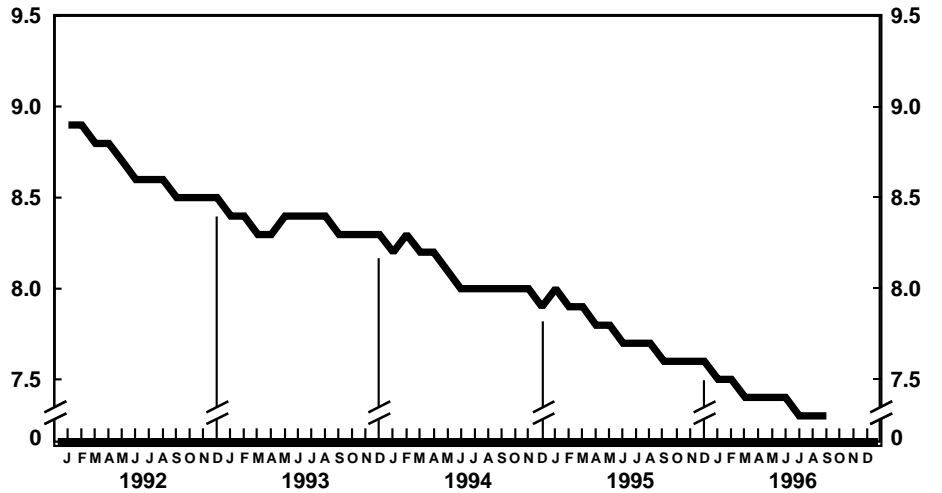
Provisional marriage rates per 1,000 population for successive 12-month periods ending with month indicated: United States, 1992-96



Provisional divorce rates per 1,000 population for successive 12-month periods ending with month indicated: United States, 1992-96



Provisional death rates per 1,000 population for successive 12-month periods ending with month indicated: United States, 1992-96



Provisional infant mortality rates per 1,000 live births for successive 12-month periods ending with month indicated: United States, 1992-96

Table 1. Provisional number of live births, marriages, divorces, deaths, and infant deaths and rates, by month: United States, January 1995–September 1996[Data are provisional and are subject to monthly reporting variation; see [Technical notes](#)]

Period	Live births				Marriages		Divorces		Deaths		Infant deaths	
	Number	Rate per 1,000 women aged 15–44 years		Number	Rate per 1,000 population	Number	Rate per 1,000 population	Number	Rate per 1,000 population	Number	Rate per 1,000 live births	
		Unadjusted	Seasonally adjusted ¹									
1995:												
January	350,000	15.8	69.4	72.8	111,000	5.1	96,000	4.3	220,000	9.9	2,700	7.9
February	287,000	14.3	63.1	64.3	146,000	7.5	89,000	4.4	194,000	9.7	2,400	8.0
March	338,000	15.2	67.1	68.0	148,000	6.8	98,000	4.4	208,000	9.4	2,700	8.0
April	313,000	14.5	64.1	65.8	165,000	7.9	98,000	4.6	200,000	9.3	2,300	7.4
May	321,000	14.4	63.5	64.0	238,000	10.7	103,000	4.6	184,000	8.2	2,500	7.5
June	318,000	14.8	65.2	63.8	263,000	12.2	104,000	4.8	180,000	8.3	2,400	7.5
July	337,000	15.1	66.6	64.0	224,000	10.0	97,000	4.4	188,000	8.4	2,400	7.1
August	364,000	16.3	72.1	68.0	254,000	11.4	99,000	4.4	184,000	8.2	2,400	7.2
September	331,000	15.3	67.6	63.7	219,000	10.1	99,000	4.6	178,000	8.2	2,200	6.9
October	328,000	14.7	64.9	65.2	224,000	10.0	98,000	4.4	190,000	8.5	2,500	7.4
November	306,000	14.1	62.6	64.6	174,000	8.0	95,000	4.4	188,000	8.7	2,300	7.5
December	300,000	13.4	59.3	61.6	169,000	7.6	92,000	4.1	197,000	8.8	2,400	7.7
1996:												
January	320,000	14.3	63.4	66.6	105,000	4.9	96,000	4.3	220,000	9.8	2,400	7.5
February	304,000	14.5	64.5	65.8	155,000	7.7	85,000	4.1	197,000	9.4	2,300	7.4
March	333,000	14.9	66.1	67.0	147,000	6.8	93,000	4.2	204,000	9.1	2,500	7.6
April	309,000	14.3	63.3	65.0	168,000	8.0	94,000	4.3	192,000	8.8	2,400	7.6
May	344,000	15.4	68.2	68.7	240,000	10.7	103,000	4.6	197,000	8.8	2,300	6.8
June	304,000	14.0	62.2	61.0	235,000	10.8	104,000	4.8	179,000	8.2	2,300	7.5
July	342,000	15.2	67.8	65.1	233,000	10.4	100,000	4.5	186,000	8.3	2,300	6.8
August	356,000	15.9	70.6	66.7	237,000	10.5	100,000	4.5	176,000	7.8	2,200	6.6
September	342,000	15.7	69.9	65.8	219,000	10.1	92,000	4.2	181,000	8.3	2,300	6.9

¹The method of seasonal adjustment, developed by the U.S. Bureau of the Census, is described in *The X-11 Variant of the Census Method II Seasonal Adjustment Program*, Technical Paper No. 15 (1967 revision).

NOTE: Figures include all revisions received from the States and, therefore, may differ from those previously published.

Table 2. Provisional number of live births and deaths: Each division and State, September 1995 and 1996, and cumulative figures, 1994–96

[Data are estimates by State of residence; see [Technical notes](#)]

Area	Live births					Deaths				
	September		January–September			September		January–September		
	1996	1995	1996	1995	1994	1996	1995	1996	1995	1994
New England	16,101	13,782	145,805	134,905	132,410	10,968	9,276	87,837	89,634	87,329
Maine	1,128	1,584	10,399	10,766	10,773	790	1,205	8,364	8,935	9,225
New Hampshire	1,125	1,193	10,537	11,234	10,629	755	678	6,762	6,923	6,576
Vermont	547	449	5,080	5,141	5,326	340	330	3,713	3,852	3,476
Massachusetts	6,975	5,397	78,765	62,581	63,404	5,797	4,047	40,940	41,509	39,886
Rhode Island	1,150	1,167	9,513	9,502	10,143	712	741	6,885	7,141	6,902
Connecticut	5,176	3,992	31,511	35,681	32,135	2,574	2,275	21,173	21,274	21,264
Middle Atlantic	47,196	54,086	397,826	406,963	413,097	28,163	27,625	271,631	278,627	275,864
New York	21,689	21,291	202,196	197,588	207,545	12,393	11,429	122,575	126,535	125,784
New Jersey	10,536	19,970	80,615	93,960	86,242	5,580	5,573	53,757	56,177	53,817
Pennsylvania	14,971	12,825	115,015	115,415	119,310	10,190	10,623	95,299	95,915	96,263
East North Central	50,003	56,335	457,551	468,002	486,742	30,539	31,355	287,739	294,598	296,738
Ohio	13,423	16,510	111,518	115,476	122,268	8,514	8,868	77,922	78,916	80,042
Indiana	4,297	7,341	51,763	59,666	61,628	3,826	4,209	35,723	38,449	39,961
Illinois	15,663	16,398	138,151	140,548	142,305	8,260	8,328	77,929	81,226	80,272
Michigan	11,248	10,328	105,436	101,168	107,715	6,376	6,496	62,401	62,487	62,730
Wisconsin	5,372	5,758	50,683	51,144	52,826	3,563	3,454	33,764	33,520	33,733
West North Central	23,714	19,693	194,744	191,114	189,952	13,832	13,076	126,306	126,813	127,503
Minnesota	5,586	5,544	48,200	47,753	49,130	2,990	3,101	27,292	27,585	27,174
Iowa	3,065	2,726	28,498	25,998	26,994	2,144	2,187	20,028	19,714	19,779
Missouri	7,818	5,774	56,639	55,924	56,427	4,696	3,896	40,619	40,921	42,114
North Dakota	773	681	6,342	6,605	6,496	454	474	4,318	4,531	4,429
South Dakota	786	932	7,361	8,373	8,060	493	493	4,670	5,168	5,102
Nebraska	2,091	1,972	17,765	17,629	17,364	1,236	1,189	11,349	11,189	10,994
Kansas	3,595	2,064	29,939	28,832	25,481	1,819	1,736	18,030	17,705	17,911
South Atlantic	56,315	57,218	488,346	495,426	496,874	33,321	32,895	332,391	328,818	323,831
Delaware	944	792	7,725	7,571	7,673	441	422	4,736	4,584	4,669
Maryland	6,849	5,788	54,260	55,580	52,701	3,062	2,988	31,166	30,601	29,431
District of Columbia	691	767	6,154	6,834	7,484	388	522	4,445	4,912	5,106
Virginia	8,099	8,081	66,205	68,735	71,019	4,290	4,156	39,126	39,568	40,486
West Virginia	1,671	1,908	16,525	16,525	16,786	1,428	1,444	14,206	14,978	15,400
North Carolina	6,475	8,938	75,734	77,795	77,928	5,062	5,181	49,896	48,626	48,772
South Carolina	4,324	4,116	38,322	37,704	39,680	2,481	2,550	25,565	24,387	23,601
Georgia	10,294	11,844	85,477	86,836	82,279	4,251	4,217	44,864	43,996	43,374
Florida	16,968	14,984	139,459	137,846	141,324	11,918	11,415	118,387	117,166	112,992
East South Central	20,091	20,277	169,222	167,689	173,470	11,933	12,393	118,713	119,350	117,710
Kentucky	4,905	5,574	39,879	38,890	39,296	2,914	2,867	28,340	29,224	28,574
Tennessee	6,168	6,009	53,555	53,965	57,007	3,778	4,086	37,772	38,138	36,765
Alabama	5,268	5,317	45,987	46,267	45,592	3,259	3,298	32,498	31,736	32,188
Mississippi	3,750	3,377	29,801	28,567	31,575	1,982	2,142	20,103	20,252	20,183
West South Central	40,016	58,078	364,330	378,314	354,904	18,289	25,203	184,380	184,507	182,103
Arkansas	3,201	2,869	27,214	25,289	25,997	2,128	1,951	19,376	18,888	20,105
Louisiana	6,210	6,263	50,382	50,696	51,273	3,297	3,256	31,291	29,808	31,357
Oklahoma	3,968	3,500	33,919	34,785	34,815	2,496	2,548	24,930	24,547	24,513
Texas ¹	26,637	45,446	252,815	267,544	242,819	10,368	17,448	108,783	111,264	106,128
Mountain	19,875	21,675	192,438	185,407	186,402	8,628	6,991	91,751	85,360	86,091
Montana	845	1,056	8,209	8,488	8,336	599	637	5,757	5,683	5,562
Idaho	1,587	1,513	14,405	13,188	13,222	685	642	6,446	6,306	6,366
Wyoming	519	480	4,650	4,767	4,855	296	300	2,639	2,781	2,629
Colorado	4,054	3,833	36,531	38,252	41,317	1,886	1,842	18,892	18,651	18,209
New Mexico	2,171	2,709	20,271	20,547	20,763	783	856	9,394	9,362	9,073
Arizona	4,022	6,047	59,553	54,670	51,297	2,363	1,021	30,429	25,491	27,191
Utah	4,547	3,306	31,612	29,379	29,417	884	761	8,300	8,010	7,904
Nevada	2,130	2,731	17,207	16,116	17,195	1,132	932	9,894	9,076	9,157
Pacific	67,186	52,483	522,860	533,916	554,555	25,535	24,449	230,114	229,568	226,734
Washington	6,963	7,592	60,687	59,890	59,361	4,041	3,126	30,446	29,769	29,283
Oregon	3,554	3,337	34,104	33,375	32,428	2,477	2,477	21,108	21,321	20,872
California ¹	54,211	38,818	406,635	418,864	438,597	18,229	17,944	170,778	170,939	169,316
Alaska	879	962	7,564	8,017	9,715	194	258	1,811	1,845	1,823
Hawaii	1,579	1,774	13,870	13,770	14,454	594	644	5,971	5,694	5,440
Puerto Rico ²	5,445	4,875	44,361	44,377	---	2,063	2,340	20,126	21,806	---

--- Data not available.

¹Figures include adjustments for varying lengths of reporting periods; see [Technical notes](#).

²Data for Puerto Rico are not included in U.S. total figures.

NOTES: Figures include all revisions received from the States. Cumulative figures for the current year reflect revisions received for previous months, and figures for earlier years may differ from those previously published.

Table 3. Provisional number of marriages and divorces: Each division and State, September 1995 and 1996, and cumulative figures, 1994–96

[By State of occurrence. Number of events reported; see [Technical notes](#). Divorces include reported annulments]

Area	Marriages					Divorces				
	September		January–September			September		January–September		
	1996	1995	1996	1995	1994	1996	1995	1996	1995	1994
New England	¹ 10,194	12,868	¹ 60,425	71,851	78,433	3,671	3,585	28,489	30,232	29,071
Maine	---	1,541	---	8,440	8,189	558	632	3,677	3,958	3,986
New Hampshire	1,192	1,090	6,782	6,632	7,349	335	354	3,430	3,631	3,730
Vermont	844	823	4,202	4,289	4,109	124	223	1,939	2,132	1,983
Massachusetts	4,206	4,948	28,478	30,640	37,480	1,496	1,255	9,165	10,398	9,986
Rhode Island	1,058	1,137	5,918	5,532	5,152	283	314	2,454	2,825	2,440
Connecticut	2,894	3,329	15,045	16,318	16,154	875	807	7,824	7,288	6,946
Middle Atlantic	31,999	27,608	192,275	194,846	198,742	11,351	10,546	93,984	90,064	89,126
New York ²	18,698	13,401	104,717	102,495	104,935	6,186	5,288	46,568	41,785	41,439
New Jersey	4,594	5,734	35,242	37,326	38,310	1,900	1,815	18,903	18,494	18,121
Pennsylvania	8,707	8,473	52,316	55,025	55,497	3,265	3,443	28,513	29,785	29,566
East North Central	37,017	37,017	228,089	248,324	254,459	¹ 11,260	¹ 11,326	¹ 104,491	¹ 108,459	¹ 111,390
Ohio	9,118	10,744	61,102	68,292	65,997	3,274	3,438	32,427	36,881	36,857
Indiana	2,870	4,641	20,898	37,680	37,593	---	---	---	---	---
Illinois	10,312	9,863	66,498	60,775	69,367	3,159	3,567	29,987	28,733	31,706
Michigan	10,065	7,493	51,802	53,639	53,424	3,359	2,908	29,246	29,785	29,911
Wisconsin	4,652	4,276	27,789	27,938	28,078	1,468	1,413	12,831	13,060	12,916
West North Central	14,589	16,431	111,587	112,535	113,269	6,633	6,646	55,642	56,779	56,821
Minnesota	4,473	4,251	26,043	25,772	25,511	1,194	1,473	11,286	11,699	11,992
Iowa	2,425	2,636	17,302	16,817	17,298	928	760	7,469	7,818	8,452
Missouri	4,450	3,947	35,278	34,391	34,189	1,765	2,125	19,632	20,278	20,254
North Dakota	597	446	3,937	3,645	3,863	190	179	1,740	1,650	1,653
South Dakota	584	731	5,387	5,855	6,042	225	272	2,045	2,138	2,199
Nebraska	1,157	1,192	9,865	9,694	10,003	520	496	4,539	4,702	4,972
Kansas	903	3,228	13,775	16,361	16,363	1,811	1,341	8,931	8,494	7,299
South Atlantic	38,800	39,814	332,051	337,102	334,293	¹ 20,224	19,552	¹ 167,311	171,560	174,835
Delaware	578	695	3,930	4,032	3,750	268	263	2,580	2,822	2,555
Maryland	4,834	5,700	30,981	32,359	31,635	955	1,577	11,558	11,559	12,987
District of Columbia	157	212	1,644	1,492	2,049	---	154	---	1,104	1,728
Virginia	5,647	6,063	48,474	51,491	52,479	2,221	2,477	20,743	21,036	22,149
West Virginia	1,401	1,256	8,347	8,412	8,030	993	804	5,630	6,690	6,693
North Carolina	6,171	5,968	46,121	47,302	37,130	3,399	3,118	27,363	28,476	28,018
South Carolina	3,510	4,077	33,027	34,758	39,976	1,650	1,364	11,625	11,109	11,394
Georgia	5,187	5,016	45,634	46,952	47,926	2,981	3,539	27,352	28,009	28,136
Florida	11,315	10,827	113,893	110,304	111,318	7,757	6,256	60,460	60,755	61,175
East South Central	18,096	15,614	145,328	147,395	143,431	¹ 7,609	7,654	¹ 62,971	72,275	74,467
Kentucky	3,587	3,971	32,624	35,474	36,090	2,126	1,531	16,498	17,108	17,207
Tennessee	8,055	6,023	59,813	65,321	59,561	2,707	2,798	26,081	25,758	25,150
Alabama	4,673	3,654	36,452	30,507	30,819	2,776	2,015	20,392	19,566	20,157
Mississippi	1,781	1,966	16,439	16,093	16,961	---	1,310	---	9,843	11,953
West South Central	23,658	26,138	222,712	234,932	231,998	¹ 5,098	¹ 5,777	¹ 97,061	¹ 108,206	¹ 106,686
Arkansas	2,500	3,703	26,499	27,437	29,218	1,200	1,620	11,400	11,878	13,529
Louisiana	3,278	3,327	27,013	30,942	31,742	---	---	---	---	---
Oklahoma	1,785	2,298	20,553	22,012	22,771	1,290	1,741	14,733	16,435	16,286
Texas ³	16,095	16,810	148,647	154,541	148,267	2,608	12,416	70,928	79,893	76,871
Mountain	¹ 13,232	24,982	¹ 107,956	210,246	209,168	¹ 5,301	¹ 6,703	¹ 45,218	¹ 56,471	¹ 52,289
Montana	669	742	5,442	5,494	5,639	361	342	3,188	3,116	3,074
Idaho	1,702	1,947	11,624	12,001	11,746	606	652	5,275	5,057	5,344
Wyoming	526	556	3,940	4,003	3,855	208	228	2,322	2,381	2,254
Colorado	2,691	4,029	26,317	27,577	27,558	---	---	---	---	---
New Mexico ^{4,5}	1,228	1,318	12,417	11,608	9,791	925	1,042	8,398	8,712	7,505
Arizona ²	3,209	2,927	30,356	29,365	27,852	2,255	2,507	19,380	20,668	17,380
Utah	3,207	2,577	17,860	17,242	16,019	946	839	6,655	6,754	6,955
Nevada	---	10,886	---	102,956	106,708	---	1,093	---	9,783	9,777
Pacific	27,498	24,371	230,438	211,125	222,041	¹ 3,537	¹ 4,026	¹ 36,929	¹ 39,278	¹ 41,197
Washington	3,241	4,380	29,650	33,946	32,723	1,730	2,091	20,419	21,664	22,821
Oregon	2,695	2,755	18,629	20,873	19,761	1,228	1,183	10,793	11,250	12,344
California	19,560	14,825	163,176	137,825	151,581	---	---	---	---	---
Alaska	286	543	4,085	4,338	4,351	100	199	2,047	2,291	2,459
Hawaii	1,716	1,868	14,898	14,143	13,625	479	553	3,670	4,073	3,573
Puerto Rico ⁶	1,879	1,901	21,747	23,273	---	---	---	---	---	---

--- Data not available.

¹Excludes figures for State(s) shown below as not available.

²Figures for marriages are marriage licenses issued for some counties.

³Figures include adjustments for varying lengths of reporting periods; see [Technical notes](#).

⁴Figures for marriages are marriage licenses issued.

⁵Figures for divorces include estimates for some counties.

⁶Data for Puerto Rico are not included in U.S. total figures.

NOTES: Figures include all revisions received from the States. Cumulative figures for the current year reflect revisions received for previous months, and figures for earlier years may differ from those previously published.

Table 4. Provisional number of deaths under 1 year and infant mortality rates: Each division and State, 12 months ending with September 1995 and 1996

[Data are estimates by State of residence. Figures should be interpreted with caution because of conversion to place of residence; see [Technical notes](#). Infant mortality rates are deaths under 1 year per 1,000 live births in specified area]

Area	12 months ending with September			
	1996		1995	
	Number	Rate	Number	Rate
New England	937	5.2	969	5.5
Maine	61	4.5	75	5.2
New Hampshire	71	4.9	80	5.3
Vermont	54	8.0	40	5.7
Massachusetts	421	4.7	441	5.3
Rhode Island	71	5.6	87	6.8
Connecticut	259	6.3	246	5.4
Middle Atlantic	3,861	7.4	4,026	7.4
New York	1,884	7.0	2,073	7.7
New Jersey	815	8.0	807	6.5
Pennsylvania	1,162	7.7	1,146	7.5
East North Central	4,975	8.1	5,425	8.7
Ohio	1,210	8.0	1,322	8.5
Indiana	645	8.5	782	9.6
Illinois	1,530	8.4	1,671	8.9
Michigan	1,079	7.9	1,151	8.6
Wisconsin	511	7.7	499	7.4
West North Central	1,826	7.1	1,859	7.4
Minnesota	406	6.4	401	6.3
Iowa	223	5.7	257	7.4
Missouri	578	7.6	593	7.9
North Dakota	33	3.9	47	5.4
South Dakota	55	5.8	120	11.0
Nebraska	204	8.8	172	7.4
Kansas	327	8.5	269	7.3
South Atlantic	5,504	8.5	5,666	8.6
Delaware	74	7.3	69	6.7
Maryland	598	8.4	654	8.8
District of Columbia	115	13.9	175	19.4
Virginia	671	7.7	706	7.5
West Virginia	158	8.1	150	7.0
North Carolina	946	9.5	999	9.8
South Carolina	403	8.0	426	8.7
Georgia	1,092	9.8	1,043	9.2
Florida	1,447	7.6	1,444	7.7
East South Central	2,083	9.3	2,156	9.5
Kentucky	408	7.8	395	7.7
Tennessee	647	8.8	715	9.8
Alabama	639	10.5	618	10.1
Mississippi	389	10.1	428	10.6
West South Central	3,279	7.0	3,565	7.2
Arkansas	319	8.8	249	7.4
Louisiana	558	8.3	629	9.3
Oklahoma	407	9.0	392	8.6
Texas ¹	1,995	6.3	2,295	6.6
Mountain	1,717	6.9	1,656	6.8
Montana	88	8.0	79	7.1
Idaho	122	6.4	112	6.5
Wyoming	43	7.0	57	9.1
Colorado	341	7.1	363	7.1
New Mexico	161	6.0	211	7.6
Arizona	592	8.1	492	7.1
Utah	225	5.5	223	5.8
Nevada	145	6.5	119	5.8
Pacific	² 3,747	² 5.3	4,430	6.2
Washington	---	---	389	4.9
Oregon	225	5.2	275	6.4
California ¹	3,345	6.1	3,584	6.4
Alaska	71	7.4	69	6.6
Hawaii	106	5.7	113	6.1
Puerto Rico ³	599	9.8	---	---

--- Data not available.

¹Figures include adjustments for varying lengths of reporting periods; see [Technical notes](#).

²Excludes figures for State shown below as not available.

³Data for Puerto Rico are not included in U.S. total figures.

NOTES: Figures include all revisions received from the States. Figures for the current year reflect revisions received for previous months, and figures for earlier years may differ from those previously published.

Table 5. Provisional number of deaths and death rates, by age, race, and sex, and age-adjusted death rates by race and sex: United States, August 1995 and 1996, cumulative figures 1995 and 1996, and 12 months ending with August 1995 and 1996

[Data are provisional, estimated from a 10-percent sample of deaths. Age-specific rates on an annual basis per 100,000 population in specified group; age-adjusted rates per 100,000 U.S. standard million population; see [Technical notes](#). Because of rounding of estimates, figures may not add to totals. For method of computation and information on standard errors of the estimates, see [Technical notes](#)]

Age, race, and sex	August				January–August				12 months ending with August							
	1996		1995		1996		1995		1996		1995					
	Number	Rate	Number	Rate	Number	Rate	Number	Rate	Number	Rate	Number	Rate				
All races, both sexes ¹																
All ages	176,000	782.2	184,000	822.2	1,550,000	878.3	1,557,000	891.6	2,302,000	870.7	2,296,000	876.6				
Under 1 year	} 3,550	72.1	3,610	73.6	18,700	² 727.7	19,800	² 773.7	28,200	² 729.7	30,000	² 779.9				
1–4 years					4,190	40.2	4,770	45.3	6,160	39.4	7,040	44.5				
5–14 years					6,070	23.6	5,340	21.1	8,960	23.3	8,040	21.2				
15–24 years					2,890	94.9	3,440	112.7	22,370	93.4	22,820	95.4	34,100	95.0	34,930	97.2
25–34 years					4,360	127.6	5,590	161.3	35,520	131.6	39,350	144.3	54,440	134.3	58,970	143.8
35–44 years					7,690	209.6	9,040	250.0	64,840	225.5	68,280	242.2	99,200	230.5	101,820	241.1
45–54 years					11,510	418.9	12,330	465.1	94,430	441.3	96,590	470.3	140,990	441.1	141,880	461.9
55–64 years					18,280	1,009.9	18,730	1,042.6	157,060	1,106.7	156,970	1,117.3	234,540	1,103.7	235,090	1,115.0
65–74 years	36,660	2,318.0	36,880	2,315.0	320,760	2,572.0	325,540	2,607.9	474,170	2,533.5	480,390	2,562.8				
75–84 years	48,700	5,018.1	51,390	5,415.0	442,620	5,844.0	440,790	5,969.0	653,400	5,771.6	649,200	5,869.3				
85 years and over	42,060	13,252.7	42,630	13,774.3	382,410	15,461.4	375,810	15,655.7	564,860	15,287.1	547,940	15,258.7				
Not stated	140	...	110	...	720	...	740	...	1,000	...	1,010	...				
Age-adjusted rate ³	450.6	...	481.4	...	496.8	...	510.9	...	494.3	...	504.9				
All races, male ¹																
All ages	89,100	811.4	94,440	865.9	783,360	908.9	789,970	926.7	1,165,160	902.4	1,166,700	912.2				
Under 1 year	} 1,950	77.4	2,090	83.3	10,020	² 762.0	10,910	² 832.9	15,430	² 780.9	16,670	² 847.5				
1–4 years					2,360	44.3	2,710	50.7	3,500	43.8	4,010	49.5				
5–14 years					3,620	27.5	3,220	24.9	5,420	27.5	4,770	24.5				
15–24 years					2,150	138.2	2,470	158.5	16,790	137.4	17,400	142.6	25,830	140.9	26,720	145.7
25–34 years					3,300	193.4	3,960	228.6	25,310	187.7	28,670	210.4	39,010	192.6	42,980	209.7
35–44 years					5,360	294.4	6,170	343.9	44,390	311.2	47,400	339.0	67,880	317.8	70,620	337.2
45–54 years					7,230	538.6	7,670	592.3	59,810	572.1	60,840	606.3	89,760	574.9	89,370	595.7
55–64 years					11,080	1,286.3	11,730	1,373.8	94,160	1,394.6	94,420	1,414.5	140,220	1,387.1	142,000	1,417.6
65–74 years	20,580	2,918.6	21,000	2,965.8	181,580	3,268.0	185,620	3,348.1	269,940	3,238.6	273,210	3,282.6				
75–84 years	23,520	6,173.6	25,500	6,918.0	217,690	7,342.1	216,360	7,564.8	320,480	7,239.2	317,150	7,411.8				
85 years and over	13,850	15,440.9	13,770	15,910.7	127,130	18,251.0	121,930	18,178.8	187,000	17,998.1	178,540	17,800.6				
Not stated	80	...	80	...	500	...	470	...	680	...	650	...				
Age-adjusted rate ³	573.5	...	621.1	...	633.2	...	655.9	...	631.6	...	648.3				
All races, female ¹																
All ages	86,740	754.3	89,300	781.2	766,300	849.1	766,800	858.2	1,134,810	839.2	1,129,540	842.5				
Under 1 year	} 1,600	66.6	1,520	63.5	8,640	² 688.3	8,850	² 708.3	12,730	² 675.7	13,260	² 706.8				
1–4 years					1,830	36.0	2,050	39.9	2,660	34.9	3,020	39.1				
5–14 years					2,450	19.6	2,110	17.2	3,540	18.9	3,270	17.7				
15–24 years					740	49.6	970	64.9	5,580	47.5	5,420	46.3	8,260	47.0	8,210	46.7
25–34 years					1,060	62.0	1,630	94.0	10,220	75.6	10,680	78.3	15,430	76.1	15,990	78.0
35–44 years					2,330	126.0	2,870	157.5	20,450	141.2	20,870	146.9	31,320	144.4	31,200	146.5
45–54 years					4,280	304.5	4,660	343.7	34,620	316.4	35,750	340.2	51,220	313.3	52,510	334.2
55–64 years					7,200	758.9	7,000	742.6	62,900	845.6	62,550	848.4	94,320	846.5	93,090	841.1
65–74 years	16,080	1,834.8	15,880	1,794.4	139,180	2,012.7	139,920	2,016.7	204,230	1,967.3	207,180	1,988.1				
75–84 years	25,170	4,269.6	25,890	4,460.5	224,930	4,880.1	224,440	4,960.4	332,920	4,829.1	332,050	4,896.0				
85 years and over	28,210	12,390.6	28,860	12,949.8	255,280	14,368.9	253,880	14,673.1	377,860	14,226.7	369,400	14,273.6				
Not stated	60	...	30	...	220	...	270	...	320	...	350	...				
Age-adjusted rate ³	346.4	...	364.0	...	383.7	...	390.3	...	379.9	...	385.3				
White																
All ages	151,120	811.7	156,090	842.2	1,334,560	912.8	1,337,240	922.5	1,979,360	903.3	1,972,330	906.6				
Under 1 year	} 2,310	59.4	2,370	61.0	12,150	² 605.9	12,970	² 648.1	18,610	² 617.9	19,580	² 650.5				
1–4 years					2,810	34.3	3,240	39.1	4,210	34.2	4,790	38.3				
5–14 years					4,240	20.9	3,850	19.1	6,480	21.3	5,720	19.0				
15–24 years					1,990	82.1	2,350	96.5	15,580	81.7	15,900	83.2	24,200	84.6	24,190	84.3
25–34 years					3,100	111.5	3,820	134.9	24,930	113.4	27,920	125.2	37,840	114.5	42,070	125.5
35–44 years					5,800	190.0	6,580	218.5	46,880	195.9	48,300	205.7	71,560	199.7	72,360	205.6
45–54 years					8,820	376.3	9,370	413.4	71,890	393.4	74,170	422.0	107,690	394.6	108,800	413.9
55–64 years					15,140	969.6	15,030	968.5	127,860	1,044.1	127,320	1,048.0	190,680	1,039.4	190,960	1,047.2
65–74 years	31,550	2,254.9	31,720	2,245.3	278,650	2,523.2	280,630	2,533.0	411,470	2,481.9	414,710	2,492.2				
75–84 years	43,940	4,993.0	45,730	5,314.2	397,830	5,792.8	396,220	5,917.1	587,290	5,720.7	583,920	5,821.7				
85 years and over	38,340	13,282.3	39,020	13,859.1	351,220	15,606.8	346,160	15,843.1	518,580	15,424.7	504,490	15,432.5				
Not stated	120	...	100	...	530	...	570	...	760	...	740	...				
Age-adjusted rate ³	428.3	...	449.9	...	471.4	...	482.6	...	468.9	...	477.0				

See footnotes at end of table.

Table 5. Provisional number of deaths and death rates, by age, race, and sex, and age-adjusted death rates by race and sex: United States, August 1995 and 1996, cumulative figures 1995 and 1996, and 12 months ending with August 1995 and 1996—Con.

[Data are provisional, estimated from a 10-percent sample of deaths. Age-specific rates on an annual basis per 100,000 population in specified group; age-adjusted rates per 100,000 U.S. standard million population; see [Technical notes](#). Because of rounding of estimates, figures may not add to totals. For method of computation and information on standard errors of the estimates, see [Technical notes](#)]

Age, race, and sex	August				January–August				12 months ending with August			
	1996		1995		1996		1995		1996		1995	
	Number	Rate	Number	Rate	Number	Rate	Number	Rate	Number	Rate	Number	Rate
White male												
All ages	75,620	827.5	79,290	872.1	667,500	930.2	671,400	944.3	992,150	922.6	991,490	929.3
Under 1 year	} 1,330	66.7	1,470	73.8	6,600	² 641.7	7,220	² 703.3	10,380	² 671.4	10,930	² 707.9
1–4 years					1,670	39.7	1,960	46.0	2,520	39.9	2,860	44.6
5–14 years					2,510	24.1	2,310	22.4	3,900	24.9	3,360	21.7
15–24 years					1,370	110.1	1,720	137.7	11,440	117.0	12,020	122.6
25–34 years	2,310	164.7	2,780	194.5	18,100	163.1	20,750	184.3	27,650	165.8	31,220	184.4
35–44 years	4,130	269.8	4,580	303.3	32,480	270.8	34,090	289.5	49,570	275.8	51,070	289.5
45–54 years	5,580	482.0	5,980	534.4	45,870	508.4	47,100	543.0	69,150	513.1	69,020	531.9
55–64 years	9,210	1,225.6	9,420	1,262.7	76,970	1,306.4	77,650	1,330.2	114,820	1,301.2	116,840	1,333.6
65–74 years	17,640	2,806.4	17,990	2,844.0	158,780	3,203.4	161,490	3,258.5	235,440	3,165.4	238,500	3,204.8
75–84 years	21,390	6,167.0	22,810	6,800.9	196,520	7,282.3	195,460	7,512.0	289,630	7,188.6	286,220	7,352.2
85 years and over	12,590	15,532.2	12,450	15,933.5	116,180	18,448.3	110,970	18,337.6	170,630	18,171.5	162,680	17,975.7
Not stated	70	...	80	...	380	...	380	...	540	...	500	...
Age-adjusted rate ³	541.2	...	580.3	...	599.0	...	619.4	...	597.5	...	612.2
White female												
All ages	75,500	796.5	76,800	813.4	667,060	896.0	665,830	901.5	987,210	884.7	980,850	884.9
Under 1 year	} 980	51.8	900	47.6	5,550	² 569.1	5,750	² 588.9	8,230	² 561.4	8,650	² 590.0
1–4 years					1,130	28.0	1,280	31.6	1,690	28.1	1,930	31.7
5–14 years					1,730	17.5	1,550	15.7	2,580	17.4	2,360	16.1
15–24 years					610	51.7	630	53.1	4,130	44.5	3,880	41.6
25–34 years	780	56.6	1,030	73.5	6,830	62.7	7,170	65.0	10,190	62.3	10,860	65.4
35–44 years	1,670	109.8	2,000	133.2	14,400	120.7	14,210	121.3	21,990	121.3	21,290	121.3
45–54 years	3,240	273.2	3,400	296.3	26,020	281.4	27,070	304.4	38,540	279.0	39,790	298.9
55–64 years	5,940	733.3	5,610	696.1	50,890	800.9	49,670	787.1	75,860	796.8	74,120	782.3
65–74 years	13,910	1,805.1	13,730	1,759.8	119,870	1,969.5	119,130	1,946.1	176,030	1,925.7	176,210	1,915.7
75–84 years	22,560	4,231.2	22,920	4,364.6	201,310	4,828.7	200,760	4,903.3	297,660	4,772.5	297,700	4,850.9
85 years and over	25,750	12,403.8	26,560	13,057.3	235,030	14,503.2	235,180	14,887.5	347,950	14,360.3	341,810	14,459.0
Not stated	50	...	20	...	150	...	190	...	220	...	240	...
Age-adjusted rate ³	332.4	...	339.0	...	365.1	...	368.1	...	361.3	...	363.8
Black												
All ages	21,880	767.4	24,320	862.6	189,560	848.4	193,400	878.9	283,200	846.5	285,080	864.0
Under 1 year	} 1,040	134.8	1,020	133.3	5,870	² 1,401.1	6,090	² 1,466.8	8,720	² 1,388.5	9,320	² 1,500.8
1–4 years					1,180	72.5	1,330	79.7	1,710	69.5	1,960	78.8
5–14 years					1,450	35.8	1,240	31.2	1,980	33.2	1,890	32.2
15–24 years					800	172.2	900	194.2	5,920	162.2	5,990	165.3
25–34 years	1,140	248.9	1,600	347.7	9,530	264.1	10,370	287.4	15,020	277.4	15,230	280.2
35–44 years	1,740	386.4	2,250	509.8	16,360	464.1	18,300	532.9	25,190	478.0	26,860	522.2
45–54 years	2,450	844.5	2,670	965.8	19,930	884.4	19,850	930.0	29,620	881.0	29,290	918.8
55–64 years	2,770	1,514.8	3,270	1,806.7	25,810	1,801.0	26,070	1,847.6	38,720	1,804.3	38,780	1,833.6
65–74 years	4,580	3,309.3	4,530	3,296.5	36,930	3,399.8	39,670	3,697.6	54,940	3,378.8	57,930	3,600.4
75–84 years	4,110	5,742.5	4,830	6,851.7	39,130	6,987.2	38,620	7,031.0	57,940	6,914.1	56,630	6,872.6
85 years and over	3,210	13,391.8	3,230	13,829.3	27,260	14,562.4	25,730	14,153.7	40,610	14,555.6	37,640	13,838.2
Not stated	20	...	10	...	190	...	150	...	240	...	230	...
Age-adjusted rate ³	674.4	...	768.1	...	743.9	...	781.6	...	743.6	...	770.0
Black male												
All ages	11,960	884.0	13,280	993.1	101,760	959.9	103,510	991.8	152,400	960.1	152,850	976.8
Under 1 year	} 520	132.9	500	128.8	3,060	² 1,447.3	3,240	² 1,530.4	4,580	² 1,440.3	5,080	² 1,612.7
1–4 years					600	72.1	660	78.6	870	69.8	990	78.5
5–14 years					870	43.0	820	41.3	1,190	39.3	1,230	41.3
15–24 years					670	288.2	630	271.9	4,700	256.8	4,700	259.6
25–34 years	910	419.7	1,050	482.5	6,540	383.5	7,180	420.0	10,380	405.0	10,550	410.5
35–44 years	1,130	537.3	1,490	723.4	10,770	654.5	12,150	757.1	16,640	676.1	17,790	741.3
45–54 years	1,530	1,163.9	1,520	1,213.3	12,540	1,227.8	12,290	1,268.5	18,610	1,221.1	18,250	1,263.0
55–64 years	1,660	2,089.4	2,040	2,593.9	15,200	2,440.2	14,720	2,401.2	22,490	2,410.5	21,980	2,391.7
65–74 years	2,720	4,701.8	2,610	4,559.4	20,010	4,411.4	21,020	4,709.8	30,140	4,445.4	30,240	4,520.2
75–84 years	1,810	6,893.4	2,290	8,928.1	18,260	8,891.9	17,820	8,923.0	26,770	8,719.9	26,440	8,842.8
85 years and over	1,000	14,575.9	1,140	16,990.6	9,090	16,881.5	8,840	16,807.8	13,740	17,175.0	12,810	16,215.2
Not stated	10	...	—	...	120	...	80	...	140	...	130	...
Age-adjusted rate ³	918.4	...	1,030.7	...	988.9	...	1,027.5	...	989.7	...	1,013.6

See footnotes at end of table.

Table 5. Provisional number of deaths and death rates, by age, race, and sex, and age-adjusted death rates by race and sex: United States, August 1995 and 1996, cumulative figures 1995 and 1996, and 12 months ending with August 1995 and 1996—Con.

[Data are provisional, estimated from a 10-percent sample of deaths. Age-specific rates on an annual basis per 100,000 population in specified group; age-adjusted rates per 100,000 U.S. standard million population; see [Technical notes](#). Because of rounding of estimates, figures may not add to totals. For method of computation and information on standard errors of the estimates, see [Technical notes](#)]

Age, race, and sex	August				January–August				12 months ending with August							
	1996		1995		1996		1995		1996		1995					
	Number	Rate	Number	Rate	Number	Rate	Number	Rate	Number	Rate	Number	Rate				
Black female																
All ages	9,920	662.1	11,040	744.9	87,810	747.9	89,890	777.0	130,790	743.9	132,230	762.3				
Under 1 year	} 520	136.8	520	137.9	2,810	² 1,363.4	2,850	² 1,396.6	4,140	² 1,335.5	4,240	² 1,385.6				
1–4 years					580	71.7	670	82.1	840	69.3	970	79.2				
5–14 years					580	29.5	420	21.8	790	26.9	660	22.8				
15–24 years					130	56.0	270	116.5	1,220	67.5	1,300	72.3	1,670	61.1	1,960	72.1
25–34 years					230	95.4	540	222.6	2,990	156.9	3,190	167.9	4,640	162.7	4,680	163.4
35–44 years	610	254.2	760	322.8	5,590	297.8	6,150	335.7	8,550	304.4	9,070	330.5				
45–54 years	930	586.2	1,150	760.7	7,390	599.8	7,560	647.7	11,010	599.0	11,040	633.4				
55–64 years	1,110	1,073.3	1,240	1,211.6	10,610	1,308.3	11,350	1,422.4	16,220	1,337.2	16,800	1,404.7				
65–74 years	1,860	2,309.1	1,920	2,394.7	16,930	2,674.9	18,650	2,976.6	24,790	2,615.0	27,690	2,945.7				
75–84 years	2,300	5,075.7	2,540	5,664.1	20,880	5,885.4	20,800	5,942.9	31,180	5,871.9	30,200	5,752.4				
85 years and over	2,210	12,917.0	2,100	12,615.2	18,170	13,633.2	16,890	13,079.8	26,860	13,497.5	24,830	12,865.3				
Not stated	10	...	10	...	70	...	70	...	100	...	100	...				
Age-adjusted rate ³	483.1	...	569.4	...	554.6	...	591.3	...	553.0	...	581.1				

... Category not applicable.

– Quantity zero.

¹Includes races other than white and black.

²Death rates for “Under 1 year” (based on population estimates) differ from infant mortality rates (based on live births); see [table 9](#) for infant mortality rates.

³For method of computation, see [Technical notes](#).

NOTES: Figures include all revisions received from the States. Cumulative and 12-month figures for the current year reflect revisions received for previous months, and figures for earlier years may differ from those previously published. Data include adjustments for District of Columbia, which is not included in the sample for August 1996.

Table 6. Provisional number of deaths and death rates for 72 selected causes, Human immunodeficiency virus infection, and Alzheimer's disease: United States, August 1995 and 1996, cumulative figures 1995 and 1996, and 12 months ending with August 1995 and 1996

[Data are provisional, estimated from a 10-percent sample of deaths. Rates on an annual basis per 100,000 estimated population. Because of rounding of estimates, figures may not add to totals. For method of computation and information on standard errors of the estimates, see [Technical notes](#). For explanation of asterisks preceding cause-of-death categories, see [Technical notes](#)]

Cause of death (Based on the Ninth Revision, International Classification of Diseases, 1975)	August		1995		January–August		1995		12 months ending with August		1995	
	1996		1995		1996		1995		1996		1995	
	Number	Rate	Number	Rate	Number	Rate	Number	Rate	Number	Rate	Number	Rate
All causes	176,000	782.2	184,000	822.2	1,550,000	878.3	1,557,000	891.6	2,302,000	870.7	2,296,000	876.6
Shigellosis and amebiasis	—	*	—	*	—	*	—	*	—	*	—	*
Certain other intestinal infections	80	*	60	*	580	0.3	460	0.3	760	0.3	650	0.2
Tuberculosis	60	*	120	0.5	610	0.3	910	0.5	1,070	0.4	1,350	0.5
Tuberculosis of respiratory system	40	*	90	*	480	0.3	680	0.4	870	0.3	990	0.4
Other tuberculosis	20	*	30	*	130	0.1	230	0.1	200	0.1	360	0.1
Whooping cough	—	*	—	*	10	*	—	*	20	*	—	*
Streptococcal sore throat, scarlatina, and erysipelas	—	*	—	*	—	*	10	*	—	*	10	*
Meningococcal infection	—	*	40	*	190	0.1	280	0.2	210	0.1	380	0.1
Septicemia	1,610	7.2	1,670	7.5	14,590	8.3	14,610	8.4	21,180	8.0	20,900	8.0
Acute poliomyelitis	—	*	—	*	—	*	—	*	—	*	—	*
Measles	—	*	—	*	—	*	—	*	—	*	—	*
Viral hepatitis	330	1.5	230	1.0	2,450	1.4	2,280	1.3	3,690	1.4	3,340	1.3
Syphilis	10	*	—	*	10	*	100	*	40	*	130	0.0
All other infectious and parasitic diseases ¹	2,820	12.5	4,460	20.0	26,910	15.3	33,210	19.0	42,720	16.2	49,470	18.9
Malignant neoplasms, including neoplasms of lymphatic and hematopoietic tissues	44,500	197.9	45,510	203.7	359,680	203.8	358,520	205.3	537,600	203.4	537,920	205.3
Malignant neoplasms of lip, oral cavity, and pharynx	560	2.5	650	2.9	5,140	2.9	5,330	3.0	7,790	2.9	7,910	3.0
Malignant neoplasms of digestive organs and peritoneum	10,180	45.3	11,100	49.7	83,520	47.3	83,710	47.9	125,070	47.3	126,210	48.2
Malignant neoplasms of respiratory and intrathoracic organs	12,870	57.2	12,900	57.7	105,020	59.5	103,200	59.1	156,750	59.3	154,060	58.8
Malignant neoplasm of breast	3,880	17.2	3,520	15.8	29,560	16.8	29,350	16.8	44,220	16.7	44,100	16.8
Malignant neoplasms of genital organs	4,960	22.1	5,160	23.1	39,960	22.6	40,680	23.3	60,070	22.7	61,410	23.4
Malignant neoplasms of urinary organs	1,960	8.7	1,770	7.9	15,190	8.6	15,630	8.9	22,650	8.6	22,750	8.7
Malignant neoplasms of all other and unspecified sites	5,720	25.4	5,720	25.6	44,150	25.0	43,920	25.1	65,820	24.9	66,520	25.4
Leukemia	1,610	7.2	1,840	8.2	13,890	7.9	13,430	7.7	20,090	7.6	20,020	7.6
Other malignant neoplasms of lymphatic and hematopoietic tissues	2,760	12.3	2,840	12.7	23,240	13.2	23,260	13.3	35,140	13.3	34,940	13.3
Benign neoplasms, carcinoma in situ, and neoplasms of uncertain behavior and of unspecified nature	570	2.5	560	2.5	5,330	3.0	5,880	3.4	7,840	3.0	8,200	3.1
Diabetes mellitus	4,470	19.9	4,240	19.0	40,970	23.2	39,600	22.7	59,710	22.6	57,890	22.1
Nutritional deficiencies	250	1.1	350	1.6	2,640	1.5	2,500	1.4	3,970	1.5	3,540	1.4
Anemias	300	1.3	190	0.8	2,560	1.5	2,780	1.6	4,070	1.5	4,180	1.6
Meningitis	50	*	60	*	400	0.2	610	0.3	570	0.2	920	0.4
Major cardiovascular diseases	69,000	306.9	71,650	320.8	632,610	358.6	636,990	364.8	938,140	354.9	936,450	357.5
Diseases of heart	53,300	237.1	56,130	251.3	491,710	278.7	494,670	283.3	727,910	275.4	727,060	277.5
Rheumatic fever and rheumatic heart disease	460	2.0	460	2.0	3,480	2.0	3,610	2.1	4,900	1.9	5,270	2.0
Hypertensive heart disease	1,870	8.3	1,920	8.6	17,680	10.0	16,630	9.5	25,540	9.7	24,120	9.2
Hypertensive heart and renal disease	170	0.8	170	0.8	1,490	0.8	1,610	0.9	2,220	0.8	2,440	0.9
Ischemic heart disease	34,980	155.6	36,640	164.0	318,340	180.4	323,660	185.4	472,080	178.6	476,540	181.9
Acute myocardial infarction	15,610	69.4	16,550	74.1	144,170	81.7	147,260	84.3	214,100	81.0	218,580	83.4
Other acute and subacute forms of ischemic heart disease	210	0.9	170	0.8	1,790	1.0	1,730	1.0	2,650	1.0	2,650	1.0
Angina pectoris	30	*	50	*	510	0.3	470	0.3	770	0.3	760	0.3
Old myocardial infarction and other forms of chronic ischemic heart disease	19,130	85.1	19,870	89.0	171,860	97.4	174,200	99.8	254,560	96.3	254,550	97.2
Other diseases of endocardium	1,010	4.5	1,110	5.0	10,990	6.2	10,480	6.0	16,040	6.1	15,180	5.8
All other forms of heart disease	14,800	65.8	15,830	70.9	139,740	79.2	138,690	79.4	207,130	78.4	203,510	77.7
Hypertension with or without renal disease	740	3.3	910	4.1	7,910	4.5	8,540	4.9	11,840	4.5	12,030	4.6
Cerebrovascular diseases	11,820	52.6	11,500	51.5	105,470	59.8	105,520	60.4	156,710	59.3	155,390	59.3
Intracerebral and other intracranial hemorrhage	1,810	8.0	1,740	7.8	15,250	8.6	14,810	8.5	22,140	8.4	22,110	8.4
Cerebral thrombosis and unspecified occlusion of cerebral arteries	1,000	4.4	1,000	4.5	8,030	4.5	9,100	5.2	12,330	4.7	14,000	5.3
Cerebral embolism	20	*	60	*	400	0.2	400	0.2	640	0.2	650	0.2
All other and late effects of cerebrovascular diseases	8,990	40.0	8,700	38.9	81,790	46.3	81,220	46.5	121,590	46.0	118,620	45.3

See footnotes at end of table.

Table 6. Provisional number of deaths and death rates for 72 selected causes, Human immunodeficiency virus infection, and Alzheimer's disease: United States, August 1995 and 1996, cumulative figures 1995 and 1996, and 12 months ending with August 1995 and 1996—Con.

[Data are provisional, estimated from a 10-percent sample of deaths. Rates on an annual basis per 100,000 estimated population. Because of rounding of estimates, figures may not add to totals. For method of computation and information on standard errors of the estimates, see [Technical notes](#). For explanation of asterisks preceding cause-of-death categories, see [Technical notes](#)]

Cause of death (Based on the Ninth Revision, International Classification of Diseases, 1975)	August		January–August				12 months ending with August						
	1996		1995		1996		1995		1996		1995		
	Number	Rate	Number	Rate	Number	Rate	Number	Rate	Number	Rate	Number	Rate	
Cerebrovascular diseases—Con.													
Atherosclerosis	440	1,070	4.8	1,120	5.0	10,360	5.9	11,110	6.4	15,650	5.9	16,540	6.3
Other diseases of arteries, arterioles, and capillaries441–448	2,070	9.2	1,990	8.9	17,170	9.7	17,150	9.8	26,040	9.9	25,430	9.7
Acute bronchitis and bronchiolitis466	50	*	10	*	340	0.2	420	0.2	460	0.2	520	0.2
Pneumonia and influenza480–487	4,920	21.9	5,110	22.9	55,490	31.5	55,440	31.8	80,230	30.4	78,630	30.0
Pneumonia480–486	4,920	21.9	5,110	22.9	55,040	31.2	55,040	31.5	79,690	30.1	78,210	29.9
Influenza487	—	*	—	*	450	0.3	400	0.2	530	0.2	420	0.2
Chronic obstructive pulmonary diseases and allied conditions490–496	7,380	32.8	7,660	34.3	72,970	41.4	72,630	41.6	103,890	39.3	103,240	39.4
Bronchitis, chronic and unspecified490–491	120	0.5	150	0.7	2,200	1.2	2,150	1.2	3,020	1.1	3,300	1.3
Emphysema492	1,130	5.0	1,090	4.9	11,700	6.6	12,410	7.1	16,710	6.3	17,830	6.8
Asthma493	540	2.4	420	1.9	3,440	1.9	3,860	2.2	5,090	1.9	5,370	2.0
Other chronic obstructive pulmonary diseases and allied conditions494–496	5,590	24.9	6,000	26.9	55,630	31.5	54,210	31.0	79,070	29.9	76,740	29.3
Ulcer of stomach and duodenum531–533	390	1.7	450	2.0	3,340	1.9	4,030	2.3	5,190	2.0	5,850	2.2
Appendicitis540–543	40	*	40	*	320	0.2	300	0.2	420	0.2	400	0.2
Hernia of abdominal cavity and intestinal obstruction without mention of hernia550–553,560	440	1.9	520	2.3	4,220	2.4	4,220	2.4	5,960	2.3	6,190	2.4
Chronic liver disease and cirrhosis571	1,870	8.3	1,990	8.9	16,190	9.2	17,040	9.8	24,230	9.2	25,700	9.8
Cholelithiasis and other disorders of gallbladder574–575	240	1.1	200	0.9	1,820	1.0	1,800	1.0	2,710	1.0	2,520	1.0
Nephritis and nephrotic syndrome, and nephrosis580–589	1,900	8.4	2,110	9.4	17,870	10.1	17,500	10.0	26,000	9.8	25,910	9.9
Acute glomerulonephritis and nephrotic syndrome580–581	—	*	40	*	120	0.1	210	0.1	190	0.1	250	0.1
Chronic glomerulonephritis, nephritis and nephropathy, not specified as acute or chronic, and renal sclerosis, unspecified582–583,587	110	0.5	120	0.5	1,120	0.6	820	0.5	1,640	0.6	1,400	0.5
Renal failure, disorders resulting from impaired renal function, and small kidney of unknown cause584–586,588–589	1,790	8.0	1,940	8.7	16,630	9.4	16,480	9.4	24,170	9.1	24,270	9.3
Infections of kidney590	30	*	70	*	640	0.4	560	0.3	810	0.3	880	0.3
Hyperplasia of prostate600	20	*	20	*	280	0.2	280	0.2	430	0.2	460	0.2
Complications of pregnancy, childbirth, and the puerperium630–676	10	*	50	*	190	0.1	180	0.1	330	0.1	270	0.1
Pregnancy with abortive outcome630–638	—	*	10	*	20	*	10	*	30	*	10	*
Other complications of pregnancy, childbirth, and the puerperium640–676	10	*	40	*	170	0.1	170	0.1	300	0.1	260	0.1
Congenital anomalies740–759	970	4.3	830	3.7	7,650	4.3	7,530	4.3	11,670	4.4	11,680	4.5
Certain conditions originating in the perinatal period760–779	1,050	4.7	1,170	5.2	8,590	4.9	9,170	5.2	12,830	4.9	13,780	5.3
Birth trauma, intrauterine hypoxia, birth asphyxia, and respiratory distress syndrome767–769	180	0.8	230	1.0	1,360	0.8	1,370	0.8	1,970	0.7	2,050	0.8
Other conditions originating in the perinatal period760–766,770–779	870	3.9	940	4.2	7,230	4.1	7,800	4.5	10,860	4.1	11,730	4.5
Symptoms, signs, and ill-defined conditions780–799	3,330	14.8	3,630	16.2	27,950	15.8	28,060	16.1	42,110	15.9	41,000	15.7
All other diseasesResidual	16,520	73.5	17,260	77.3	146,550	83.1	143,030	81.9	216,980	82.1	209,570	80.0
Accidents and adverse effectsE800–E949	7,920	35.2	8,670	38.8	60,220	34.1	59,010	33.8	91,000	34.4	88,730	33.9
Motor vehicle accidentsE810–E825	3,720	16.5	4,300	19.2	28,370	16.1	28,020	16.0	44,130	16.7	42,980	16.4
All other accidents and adverse effectsE800–E807,E826–E949	4,200	18.7	4,370	19.6	31,850	18.0	31,000	17.7	46,870	17.7	45,750	17.5
SuicideE950–E959	2,760	12.3	2,490	11.1	20,140	11.4	20,340	11.6	29,640	11.2	30,400	11.6
Homicide and legal interventionE960–E978	1,740	7.7	2,020	9.0	13,780	7.8	14,870	8.5	21,290	8.1	22,560	8.6
All other external causesE980–E999	220	1.0	280	1.2	1,580	0.9	1,620	0.9	2,240	0.8	2,620	1.0
Human immunodeficiency virus infection ²	*042–*044	2,310	10.3	3,960	17.7	22,740	12.9	28,740	16.4	36,370	13.8	42,990	16.4
Alzheimer's disease331.0	1,620	7.2	1,510	6.8	14,590	8.3	13,400	7.7	21,670	8.2	20,110	7.7

— Quantity zero. * Figure does not meet standards of reliability or precision; see [Technical notes](#). 0.0 Quantity more than zero but less than 0.05.

¹Includes data for deaths due to Human immunodeficiency virus infection (categories *042–*044) shown separately below; see [Technical notes](#).

²Included in All other infectious and parasitic diseases shown above.

NOTES: Figures include all revisions received from the States. Cumulative and 12-month figures for the current year reflect revisions received for previous months, and figures for earlier years may differ from those previously published. Data include adjustments for District of Columbia, which is not included in the sample for August 1996.

Table 7. Provisional number of deaths and death rates for 16 selected subcategories of Malignant neoplasms, including neoplasms of lymphatic and hematopoietic tissues: United States, August 1995 and 1996, cumulative figures 1995 and 1996, and 12 months ending with August 1995 and 1996

[Data are provisional, estimated from a 10-percent sample of deaths. Rates on an annual basis per 100,000 estimated population. Because of rounding of estimates, figures may not add to totals. For method of computation and information on standard errors of the estimates, see [Technical notes](#)]

Cause of death (Based on the Ninth Revision, International Classification of Diseases, 1975)	August				January–August				12 months ending with August			
	1996		1995		1996		1995		1996		1995	
	Number	Rate	Number	Rate	Number	Rate	Number	Rate	Number	Rate	Number	Rate
Malignant neoplasms, including neoplasms of lymphatic and hematopoietic tissues ¹140–208	44,500	197.9	45,510	203.7	359,680	203.8	358,520	205.3	537,600	203.4	537,920	205.3
Malignant neoplasm of esophagus150	940	4.2	890	4.0	7,340	4.2	7,070	4.0	10,630	4.0	10,470	4.0
Malignant neoplasm of stomach151	800	3.6	1,270	5.7	8,530	4.8	9,270	5.3	13,070	4.9	14,010	5.3
Malignant neoplasms of colon, rectum, rectosigmoid junction, and anus153,154	4,820	21.4	4,910	22.0	37,900	21.5	37,590	21.5	56,150	21.2	57,230	21.8
Malignant neoplasm of pancreas157	2,240	10.0	2,450	11.0	18,270	10.3	18,250	10.4	27,400	10.4	27,270	10.4
Malignant neoplasms of trachea, bronchus, and lung162	12,540	55.8	12,470	55.8	101,570	57.6	99,720	57.1	151,500	57.3	148,750	56.8
Malignant melanoma of skin172	630	2.8	560	2.5	4,730	2.7	4,890	2.8	6,860	2.6	7,090	2.7
Malignant neoplasm of cervix uteri180	360	1.6	540	2.4	2,850	1.6	3,070	1.8	4,550	1.7	4,530	1.7
Malignant neoplasms of body of uterus and of uterus, part unspecified179,182	540	2.4	620	2.8	3,890	2.2	4,070	2.3	5,940	2.2	5,950	2.3
Malignant neoplasm of ovary183.0	1,120	5.0	1,010	4.5	9,030	5.1	8,980	5.1	13,640	5.2	13,760	5.3
Malignant neoplasm of prostate185	2,760	12.3	2,870	12.8	22,910	13.0	23,420	13.4	34,030	12.9	35,340	13.5
Malignant neoplasm of bladder188	1,030	4.6	830	3.7	7,560	4.3	7,780	4.5	11,310	4.3	11,130	4.2
Malignant neoplasms of kidney and other and unspecified urinary organs189	930	4.1	940	4.2	7,630	4.3	7,850	4.5	11,340	4.3	11,620	4.4
Malignant neoplasms of brain and other and unspecified parts of nervous system191,192	880	3.9	1,110	5.0	7,640	4.3	7,530	4.3	11,650	4.4	11,900	4.5
Hodgkin's disease201	120	0.5	150	0.7	1,050	0.6	1,060	0.6	1,520	0.6	1,540	0.6
Malignant lymphoma other than Hodgkin's disease200,202	1,950	8.7	1,930	8.6	15,250	8.6	15,290	8.7	23,230	8.8	22,810	8.7
Multiple myeloma and other immunoproliferative neoplasms203	690	3.1	760	3.4	6,940	3.9	6,910	4.0	10,390	3.9	10,600	4.0

¹Includes figures for subcategories not shown below.

NOTES: Figures include all revisions received from the States. Cumulative and 12-month figures for the current year reflect revisions received for previous months, and figures for earlier years may differ from those previously published. Data include adjustments for District of Columbia, which is not included in the sample for August 1996.

Table 8. Provisional number of deaths and death rates for firearm mortality: United States, August 1995 and 1996, cumulative figures 1995 and 1996, and 12 months ending with August 1995 and 1996

[Data are provisional, estimated from a 10-percent sample of deaths. Rates on an annual basis per 100,000 estimated population. Because of rounding of estimates, figures may not add to totals. For method of computation and information on standard errors of the estimates, see [Technical notes](#)]

Cause of death (Based on the Ninth Revision, International Classification of Diseases, 1975)	August				January–August				12 months ending with August			
	1996		1995		1996		1995		1996		1995	
	Number	Rate	Number	Rate	Number	Rate	Number	Rate	Number	Rate	Number	Rate
Injury by firearms.E922,E955.0–E955.4,E965.0–965.4,E970,E985.0–E985.4	2,940	13.1	3,110	13.9	22,950	13.0	23,620	13.5	34,880	13.2	36,410	13.9
Accident caused by firearm missileE922	120	0.5	130	0.6	820	0.5	810	0.5	1,370	0.5	1,430	0.5
Suicide by firearmsE955.0–E955.4	1,600	7.1	1,560	7.0	12,330	7.0	12,190	7.0	18,130	6.9	18,440	7.0
Homicide and legal intervention by firearms.E965.0–E965.4,E970	1,200	5.3	1,380	6.2	9,650	5.5	10,440	6.0	15,160	5.7	16,180	6.2
Injury by firearms, undetermined whether accidentally or purposely inflicted. . . .E985.0–E985.4	20	*	40	*	150	0.1	180	0.1	220	0.1	350	0.1

* Figure does not meet standards of reliability or precision; see [Technical notes](#).

NOTES: Figures include all revisions received from the States. Cumulative and 12-month figures for the current year reflect revisions received for previous months, and figures for earlier years may differ from those previously published. Data include adjustments for District of Columbia, which is not included in the sample for August 1996.

Table 9. Provisional number of deaths under 1 year and infant mortality rates, by age and for 10 selected causes: United States, August 1995 and 1996, cumulative figures 1995 and 1996, and 12 months ending with August 1995 and 1996

[Data are provisional, estimated from a 10-percent sample of deaths. Rates on an annual basis per 100,000 live births. Because of rounding of estimates, figures may not add to totals. For method of computation and information on standard errors of the estimates, see [Technical notes](#)]

<i>Age and cause of death (Based on the Ninth Revision, International Classification of Diseases, 1975)</i>	<i>August</i>				<i>January–August</i>				<i>12 months ending with August</i>			
	<i>1996</i>		<i>1995</i>		<i>1996</i>		<i>1995</i>		<i>1996</i>		<i>1995</i>	
	<i>Number</i>	<i>Rate</i>	<i>Number</i>	<i>Rate</i>	<i>Number</i>	<i>Rate</i>	<i>Number</i>	<i>Rate</i>	<i>Number</i>	<i>Rate</i>	<i>Number</i>	<i>Rate</i>
Total, under 1 year	2,200	662.0	2,400	715.7	18,700	722.3	19,800	758.1	28,200	728.6	30,000	767.0
Under 28 days	1,610	479.6	1,610	470.5	12,390	479.4	12,500	478.3	18,560	480.2	19,060	487.6
28 days–11 months	610	181.7	840	245.5	6,270	242.6	7,260	277.8	9,600	248.4	10,870	278.1
Certain gastrointestinal diseases.008–009,535,555–558	20	*	20	*	160	6.2	140	5.4	210	5.4	190	4.9
Pneumonia and influenza.480–487	20	*	40	*	230	8.9	250	9.6	330	8.5	360	9.2
Congenital anomalies740–759	530	157.9	460	134.4	4,190	162.1	4,080	156.1	6,280	162.5	6,460	165.2
Disorders relating to short gestation and unspecified low birthweight765	270	80.4	370	108.1	2,540	98.3	2,640	101.0	3,460	89.5	3,820	97.7
Birth trauma767	10	*	10	*	140	5.4	80	*	240	6.2	140	3.6
Intrauterine hypoxia and birth asphyxia768	30	*	70	*	390	15.1	350	13.4	500	12.9	550	14.1
Respiratory distress syndrome.769	140	41.7	150	43.8	810	31.3	890	34.1	1,140	29.5	1,310	33.5
Other conditions originating in the perinatal period.760–764,766,770–779	600	178.7	560	163.6	4,640	179.5	5,060	193.6	7,330	189.6	7,770	198.8
Sudden infant death syndrome798.0	160	47.7	150	43.8	1,790	69.3	1,970	75.4	2,730	70.6	3,180	81.3
All other causesResidual	450	134.1	610	178.3	3,780	146.3	4,280	163.8	5,940	153.7	6,160	157.6

* Figure does not meet standards of reliability or precision; see [Technical notes](#).

NOTES: Figures include all revisions received from the States. Cumulative and 12-month figures for the current year reflect revisions received for previous months, and figures for earlier years may differ from those previously published. Data include adjustments for District of Columbia, which is not included in the sample for August 1996.

Technical notes

Nature and sources of data

Data in this report are provisional unless otherwise specified and include only events occurring within the United States (50 States and the District of Columbia). Mortality data exclude fetal deaths. Data for the Commonwealth of Puerto Rico are not included in the U.S. totals.

Birth, death, and infant death figures in [tables 2](#) and [4](#) for each State are estimates by State of residence. These estimates are derived by applying adjustment ratios to the actual counts of certificates for all events occurring in the State and received in registration offices during a 1-month period regardless of date of the event. The adjustment ratios for each data year represent the observed relationship between final State occurrence and residence figures for the three most recent years for which final data were available and are expressed as a single ratio for each State. As in previous years, monthly State marriage and divorce figures represent the actual count of all events occurring in the State (State of occurrence) that were received in the registration offices during the 1-month period. Delay in the receipt of certificates in a registration office may result in a low State figure for a given month followed by a high figure for the month(s) in which the delayed records are received. Data for previous months and cumulative data include revised figures received from the States.

Figures for births, deaths, and infant deaths for California in [tables 2](#) and [4](#) contain adjustments for varying lengths of State reporting periods. Figures for Texas for all events shown in [tables 2–4](#) also are adjusted for varying lengths of State reporting periods. The figures for both States are adjusted by the ratio between the number of days in the data month and the number of days in the State reporting period. The adjusted figures are included in the U.S. totals shown elsewhere in this report.

U.S. totals for births, deaths, and infant deaths are based on the State estimates by State of residence and, therefore, in effect, exclude events to nonresidents of the United States. Events to nonresidents of the United States are included in all

marriage and divorce figures. The effect of excluding events to nonresidents from the U.S. totals is small.

Provisional totals for the United States include estimates for State data shown as not available. Provisional totals for births and marriages for the entire United States include adjustments for observed differences between provisional and final monthly figures.

Divorce figures include reported annulments. The monthly national divorce estimate is obtained by multiplying the total for the reporting areas by the ratio observed between the most recent final annual divorce total for the United States and the provisional total for the reporting areas combined.

Random variation—Although the counts in this report are not subject to sampling variability (except the Current Mortality Sample), they may be affected by random variation. When the number of events is small and the probability of such an event is small, considerable caution must be observed in interpreting the data. Such infrequent events may be assumed to follow a Poisson probability distribution. For this distribution a simple approximation may be used to estimate the random variation as follows:

If N is the number of events in the population and R is the corresponding rate, the chances are 19 in 20 that

$$1. N - 2\sqrt{N} \text{ and } N + 2\sqrt{N}$$

covers the “true” number of events.

$$2. R - 2 \frac{R}{\sqrt{N}} \text{ and } R + 2 \frac{R}{\sqrt{N}}$$

covers the “true” rate.

If the rate R_1 corresponding to N_1 events is compared with the rate R_2 corresponding to N_2 events, the difference between the two rates may be regarded as statistically significant at the 0.05 level if it exceeds

$$2 \sqrt{\frac{R_1^2}{N_1} + \frac{R_2^2}{N_2}}$$

Additional information on random variation in numbers of events, rates, and ratios may be found in the technical appendixes of *Vital Statistics of the United States, 1990, Volumes I and II*.

Rates

Rates are on an annual basis and, except for infant mortality rates, are per 1,000 or 100,000 estimated population residing in the United States. The populations used for computing these rates are furnished by the U.S. Bureau of the Census. Rates shown in this report beginning with 1992 were computed using populations based on the 1990 Census enumeration comparable to those used for final data. Monthly rates are based on populations estimated for the specific month. Year-to-date rates are averages of monthly rates that have been weighted by the number of days in the corresponding months. Rates for 12-month periods are the sum of events for the period per population estimated at the midpoint of the period.

Infant mortality rates are deaths under 1 year of age for the specified period (monthly, year-to-date, or 12-month period) per 1,000 or 100,000 live births. Births used for computing monthly and year-to-date infant mortality rates are adjusted for monthly variation in the number of births. Births used to compute 12-month rates do not contain this adjustment. Births used for computing infant mortality rates are not corrected for observed differences between provisional and final monthly figures as described earlier in “Nature and sources of data.” Because monthly infant mortality rates are based on relatively few events, they are highly variable. Therefore, comparisons of monthly infant mortality rates should be interpreted cautiously; see “[Random variation](#).”

Age-adjusted death rates are used to compare relative mortality risks across groups and over time. However, they should be viewed as constructs or indexes rather than as direct or actual measures of mortality risk. Statistically, they are weighted averages of the age-specific death rates, where the weights represent the fixed population proportions by age. See chapter 5 of an earlier report (1). The age-adjusted death rates presented in this report were computed by the direct method, that is, by applying age-specific death rates to the U.S. standard million population (2). See also chapter 10 of an earlier report (1). Age groups in [table 5](#) were used to compute the age-adjusted

rates shown in that table. It is important not to compare age-adjusted rates with crude rates.

Current Mortality Sample

The Current Mortality Sample (CMS) is a 10-percent systematic sample of death certificates drawn each month after the certificates are counted in the State registration offices. Deaths and death rates for the United States by age, race, sex, and cause are estimated based on the sample. Because of the additional time required to select and process the certificates, data based on the CMS are published 1 month after publication of the U.S. and State counts. Complete information concerning the underlying cause of death sometimes is not available when the sample is drawn. As a result estimates based on sample counts for certain causes are biased. Correction for bias is not made in this report.

Estimated numbers of deaths based on the sample were proportionately adjusted to be consistent with estimates based on the count of death certificates received in State registration offices.

HIV infection—Beginning with data for 1987, the National Center for Health Statistics introduced categories *042–*044 for classifying and coding Human immunodeficiency virus (HIV) infection. The asterisks before the categories indicate that these codes are not part of the

Ninth Revision, International Classification of Diseases. Deaths classified to these categories are included in All other infectious and parasitic diseases in the List of 72 Selected Causes of Death and are also shown separately at the bottom of table 6.

Sampling variability—Because the estimates of deaths and death rates presented in this report with the exception of total deaths and deaths under 1 year are based on a sample of death certificates, they are subject to sampling variability. The estimated relative standard error in the following table is a measure of the

Relative standard errors for estimated numbers of deaths from the Current Mortality Sample expressed as a percent of the estimate

Estimated number of deaths	Relative standard error of estimate (as percent)	
	170,000 estimated deaths each month	2,000,000 estimated deaths each year
10	94.9	94.9
20	67.1	67.1
50	42.4	42.4
100	30.0	30.0
200	21.2	21.2
500	13.4	13.4
1,000	9.5	9.5
2,000	6.7	6.7
5,000	4.2	4.2
10,000	2.9	3.0
20,000	2.0	2.1
50,000	1.1	1.3
100,000	0.6	0.9
200,000	0.6
500,000	0.4
1,000,000	0.2

sampling error of the estimated number of deaths (or of the estimated death rate) expressed as a percent of the estimate. The first column refers to monthly estimates; the second to annual; cumulative year-to-date totals fall between the two.

The chances are about 2 in 3 that the percent difference between an estimate and the result of a complete count is less than the percent shown. The chances are about 19 in 20 that the percent difference is less than twice the percent shown. A figure based on 100 or fewer estimated deaths has a relative standard error of 30 percent or more and is, therefore, considered unreliable. A rate based on 100 or fewer estimated deaths has been replaced by an asterisk.

Unless otherwise specified comparisons made in the text between death rates based on the CMS were statistically significant at the 0.05 level of significance. Lack of comment in the text about any two rates does not mean that the difference was tested and found not to be significant at this level.

References

1. Feinleib M, Zarate AO, eds. Reconsidering age adjustment procedures: Workshop proceedings. National Center for Health Statistics. Vital Health Stat 4(29). 1992.
2. Grove RD, Hetzel AM. Vital statistics rates in the United States, 1940–1960. Public Health Service. Washington: National Center for Health Statistics. 1968.

Suggested citation

National Center for Health Statistics. Births, marriages, divorces, and deaths for September 1996. Monthly vital statistics report; vol 45 no 9. Hyattsville, Maryland: National Center for Health Statistics. 1997.

Copyright information

All material appearing in this report is in the public domain and may be reproduced or copied without permission; citation as to source, however, is appreciated.

National Center for Health Statistics

Director
Edward J. Sondik, Ph.D.

Deputy Director
Jack R. Anderson

Division of Vital Statistics

Director
Mary Anne Freedman

**DEPARTMENT OF
HEALTH & HUMAN SERVICES**

Centers for Disease Control and Prevention
National Center for Health Statistics
6525 Belcrest Road
Hyattsville, Maryland 20782

FIRST CLASS MAIL
POSTAGE & FEES PAID
PHS/NCHS
PERMIT NO. G-281

**OFFICIAL BUSINESS
PENALTY FOR PRIVATE USE, \$300**

To receive this publication regularly, contact the National Center for Health Statistics by calling 301-436-8500
E-mail: nchsquery@nch10a.em.cdc.gov
Internet: <http://www.cdc.gov/nchswww/nchshome.htm>

DHHS Publication No. (PHS) 97-1120
7-0347 (3/97)