

VITAL and HEALTH STATISTICS

DATA FROM THE NATIONAL HEALTH SURVEY

**NATIONAL
CENTER
For HEALTH
STATISTICS**

**Series 10
Number 15**

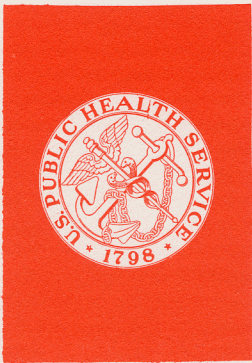
Acute Conditions

incidence and associated disability

United States - July 1963 - June 1964

**U. S. DEPARTMENT OF
HEALTH, EDUCATION, AND WELFARE
Public Health Service**





Public Health Service Publication No. 1000-Series 10-No. 15

For sale by the Superintendent of Documents, U.S. Government Printing Office
Washington, D.C., 20402 - Price 40 cents

VITAL and HEALTH STATISTICS

DATA FROM THE NATIONAL HEALTH SURVEY

Acute Conditions

incidence and associated disability

United States - July 1963 - June 1964

Statistics on the incidence of acute conditions and the associated days of restricted activity, bed disability, and time lost from work and school, by age, sex, calendar quarter, residence, and geographic region. Based on data collected in household interviews during the period July 1963-June 1964.

Washington, D.C.

April 1965

U.S. DEPARTMENT OF
HEALTH, EDUCATION, AND WELFARE

Anthony J. Celebrezze
Secretary

Public Health Service

Luther L. Terry
Surgeon General

NATIONAL CENTER FOR HEALTH STATISTICS

FORREST E. LINDER, PH. D., *Director*

THEODORE D. WOOLSEY, *Deputy Director*

O. K. SAGEN, PH. D., *Assistant Director*

WALT R. SIMMONS, M.A., *Statistical Advisor*

ALICE M. WATERHOUSE, M.D., *Medical Advisor*

JAMES E. KELLY, D.D.S., *Dental Advisor*

LOUIS R. STOLCIS, M.A., *Executive Officer*

DIVISION OF HEALTH INTERVIEW STATISTICS

PHILIP S. LAWRENCE, SC. D., *Chief*

ELIJAH L. WHITE, *Assistant Chief*

COOPERATION OF THE BUREAU OF THE CENSUS

Under the legislation establishing the National Health Survey, the Public Health Service is authorized to use, insofar as possible, the services or facilities of other Federal, State, or private agencies.

In accordance with specifications established by the National Health Survey, the Bureau of the Census, under a contractual arrangement, participates in most aspects of survey planning, selects the sample, collects the data, and carries out certain parts of the statistical processing.

CONTENTS

	Page
Selected Findings-----	1
Source of Data-----	2
Incidence of Acute Conditions and Associated Days of Disability-----	3
Condition Group, Sex, and Age-----	3
Geographic Distribution-----	5
Seasonal Variation: Calendar Quarter-----	8
Detailed Tables-----	9
Appendix I. Technical Notes on Methods-----	45
Background of This Report-----	45
Statistical Design of the Health Interview Survey-----	45
General Qualifications-----	46
Reliability of Estimates-----	46
Appendix II. Definitions of Certain Terms Used in This Report-----	48
Terms Relating to Conditions-----	48
Terms Relating to Disability-----	49
Demographic Terms-----	49

SYMBOLS

Data not available-----	---
Category not applicable-----	...
Quantity zero-----	-
Quantity more than 0 but less than 0.05----	0.0
Figure does not meet standards of reliability or precision-----	*

ACUTE CONDITIONS

INCIDENCE AND ASSOCIATED DISABILITY

Charles S. Wilder, *Division of Health Interview Statistics*

SELECTED FINDINGS

The incidence of acute respiratory illnesses which required medical attention or reduction of daily activity was substantially lower during the period July 1963-June 1964 than during the preceding year July 1962-June 1963. An estimated 204.3 million acute respiratory illnesses were reported in household interviews conducted by the Health Interview Survey, National Center for Health Statistics, during the more recent 12 months, or 1.1 cases per person per year. This estimate represents a reduction of about 28.6 million cases from that reported in the earlier period. A decline in incidence of illnesses reported as influenza, amounting to 21.5 million cases, was the principal cause of the drop.

During the year ending June 1964 the civilian, noninstitutional population of the United States experienced a total incidence of 387.4 million acute illnesses or injuries causing the persons concerned to seek medical attention or to restrict usual daily activities, a rate of 2.1 conditions per person per year. This estimate represents less of a decline in incidence than that noted above for respiratory illnesses alone because of an increased number of injuries and common childhood diseases. There were approximately 4.5 million more injuries and 9.9 million more common childhood diseases during the current year than had been reported in the previous period. Epidemics of measles and rubella (German

measles) occurring during the spring of 1964 contributed substantially to the rise in incidence of common childhood diseases.

During July 1963-June 1964, acute illnesses or injury caused an average of 8.1 days of restricted activity per person in the population, including 3.5 days spent in bed. The rate of disability was higher among females than among males, with the average female having 1.5 more days of reduced activity and 0.8 of a day more of bed disability per person. School children between the ages 6-16 years experienced 8.6 days of restricted activity, including 3.7 days in bed. Absence from school amounted to 4.4 days per child as a result of acute illness or injury.

Currently employed persons aged 17 years and older experienced 1.6 acute conditions per person and 3.3 days of work loss associated with these acute conditions. A currently employed person is defined as a person who had a job or business or worked at any time during the 2-week period prior to the week of interview.

Persons residing in 212 standard metropolitan statistical areas in the United States (as defined for the 1960 Decennial Census) reported a slightly higher rate of incidence of acute conditions than did persons in the nonfarm population residing outside of the SMSA's. Persons residing on farms outside of these 212 areas had the lowest incidence rate. Nonfarm persons living outside of metropolitan areas had the

highest rates of restricted activity and bed disability; the farm population again had the lowest rates.

Residents of the West Region reported more acute conditions (252 per 100 persons) than did persons residing in the other regions. Persons residing in the Northeast Region had the lowest rate, 192 cases per 100 persons per year. The excess in rate for the West Region compared with the Northeast Region was greatest for persons aged 15-24 years. The rates of restricted-activity days and bed-days were also highest in the West Region and lowest in the Northeast Region.

SOURCE OF DATA

The information contained in this publication is derived from household interviews conducted by the Health Interview Survey in cooperation with the U.S. Bureau of the Census in a probability sample of the civilian, noninstitutional population of the United States. The sample is designed so that interviews are conducted during every month of the year. During the 52-week period from 1963-June 1964, the sample was composed of approximately 42,000 households containing approximately 134,000 persons living at the time of the interview.

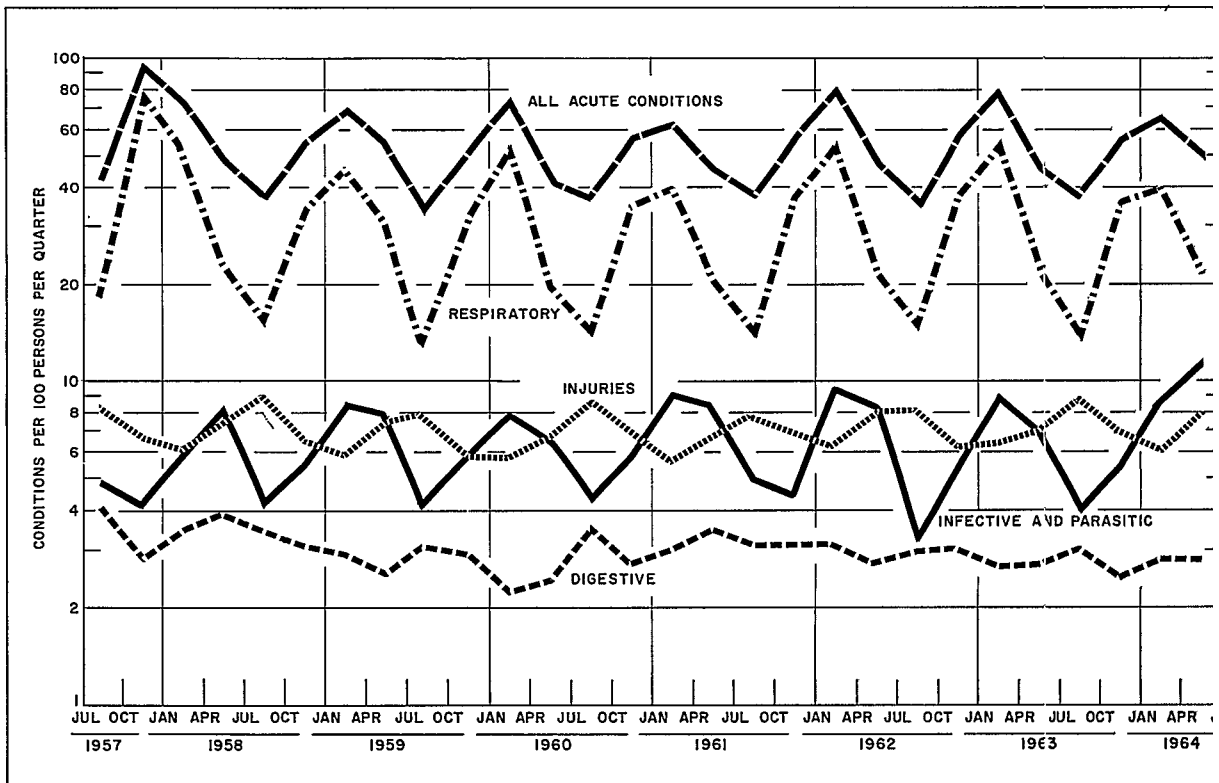


Figure 1. Incidence of acute conditions per 100 persons per quarter, by condition group.

A description of the design of the Survey, of the methods used in estimation, and of general qualifications of the data obtained from surveys is presented in Appendix I. Since estimates shown in this report are based on a sample of the population rather than on the entire population, they are subject to sampling error. Therefore, particular attention should be paid to the section entitled "Reliability of Estimates." Sampling errors for most of the estimates are of relatively low magnitude. However, where an estimated number or the numerator or the denominator of a rate or percentage is small, the sampling error may be high.

Certain terms used in this report are defined in Appendix II. Some of the terms have specialized meanings for the purpose of the Survey. For example, estimates of the incidence of acute conditions include, with certain exceptions, those conditions which had started within 2 weeks prior to the week of interview and which had involved either medical attention or restricted activity. The exceptions, listed in Appendix II, are certain conditions such as heart trouble and diabetes which are always considered chronic, regardless of duration or onset.

Annual estimates of the number of disability days associated with each acute condition are derived from the number of such days experienced during the 2-week period prior to the week of interview and include all those reported, even if the illness causing the disability had its onset prior to the 2-week period. Since any particular day of disability may be associated with more than one condition, the sum of days for all conditions adds to more than the total number of person-days of disability.

The questionnaire used by the Health Interview Survey during July 1963-June 1964 is illustrated in the publication "Current Estimates From the Health Interview Survey, United States, July 1963-June 1964" (*Vital and Health Statistics*, Series 10, Number 13). Each condition reported in response to the "illness-recall" questions (8-14) was entered on a line of table I. Further questions were asked to obtain a better description of the specific conditions and to obtain information about the actions taken by the person, such as seeking medical attention or restricting usual activities.

The incidence rates of acute conditions per quarter for the first 16 quarters from July 1957-June 1961, shown in figure 1, are presented in *Health Statistics*, Series B, Number 33. The rates for the period July 1961-June 1963 are presented in *Vital and Health Statistics*, Series 10, Numbers 1 and 10.

INCIDENCE OF ACUTE CONDITIONS AND ASSOCIATED DAYS OF DISABILITY

Condition Group, Sex, and Age

During the 12 months ending June 1964 the civilian population, excluding the residents of institutions, experienced an estimated 387.4 million acute illnesses or injuries requiring either medical attention or reduction of daily activity (table 1). The incidence rate per 100 persons was 208.5 during the year. This rate is about 5 percent lower than the rate of 218.8 reported for the previous year in *Vital and Health Statistics*, Series 10, Number 10. The principal cause of the reduction in rate was the lower incidence of respiratory illness with a rate of 110.0 per 100 persons per year for the current period compared with 127.2 for the previous year. It can be seen in figure 1 that the pattern of low incidence of respiratory illness in alternate years, established early in the Survey, has been reinstated. This pattern was interrupted in the period July 1961-June 1963 during which high incidence rates for respiratory illness were noted for 2 consecutive years. It is of interest that the incidence rates per quarter during the current year were remarkably similar to those for the July 1960-June 1961 period.

The overall incidence rate would have been lower in the current year if an increase in the incidence of infective and parasitic diseases and injuries had not occurred. The rise in rate of infective and parasitic diseases was caused primarily by increased incidence of common childhood diseases. The annual incidence rate for measles was twice that for the preceding year; the rate for rubella (German measles) was $3\frac{1}{2}$

times as great. Epidemics of these conditions began early in 1964 as evidenced by the distribution of cases reported in each of the following calendar quarters:

	<u>Measles</u>	<u>Rubella</u>
	<u>Number of conditions in thousands</u>	
Total-----	10,020	4,705
July-September 1963-----	730	391
October-December 1963----	480	106
January-March 1964-----	2,599	846
April-June 1964-----	6,211	3,362

The estimated 9.6 million cases of measles and rubella occurring during the period April-June 1964 is a threefold increase over the number of cases, 3.2 million, reported for the corresponding quarter in 1963. The epidemic proportions of these diseases not only add to the total incidence of acute conditions but may also contribute to the increased occurrence of serious complications associated with these diseases, such as severe infections arising from measles and birth defects resulting from rubella infection during pregnancy.

The number of injuries requiring medical attention or restriction of activities during July 1963-June 1964 was 4.5 million greater than the incidence during the preceding year. The incidence rate for the current year was 29.7 per 100 persons per year, a gain of 2.0 percentage points. The rise in rate was restricted almost exclusively to males.

The comparatively low incidence of respiratory illness was due primarily to the low incidence rates of influenza and the common cold. The rate for influenza during the current year was about 73 percent of that for the preceding year; similarly, the rate for the common cold declined by about 10 percent.

Females experienced a somewhat higher rate of acute conditions than did males, 216.4 cases per 100 females compared with 200.0 per 100 males. The higher rate among females was largely attributable to respiratory illnesses and to the group "All other acute conditions" which includes genitourinary disorders (with a sex ratio of 6 to 1) and the sex-specific group "Deliveries and disorders of pregnancy and the puerperium." The

sex ratio was reversed for the injuries group with the rate for males exceeding that for females by 13.2 percentage points.

Acute illness and injury was responsible for an annual rate of restricted activity of 81 days per 100 persons, including 345.9 days spent in bed (tables 2 and 3). Respiratory illnesses and injuries were the two condition groups contributing the majority of the disability days, with 6 percent of all days reported assignable to either of these condition groups. An estimated 7 percent of the acute conditions required restriction of activities or a combination of medical attention and activity restriction (table 4). Thus, the duration of the average condition requiring reduction of activity was about 5.4 days (1,507,691,000 days of restricted activity divided by 277,446,000 cases requiring restriction of activity). If acute conditions requiring only medical attention were also included in the denominator, the average duration of restricted activity per condition would be 3.9 days.

Distributions of condition groups and associated disability days by age and sex are presented in tables 5-7. For most of these groups both incidence and disability were highest in the youngest age group under 6 years of age. In general, as age advanced, the rates of incidence and disability declined; however, in many instances the rate of disability rose again in the oldest age group (fig. 2).

Children in the school-age population (6-17 years of age) experienced an annual incidence rate of acute conditions of 253.4 per 100 children. About 72.3 percent of the conditions were either respiratory illnesses or infective and parasitic diseases. As a result of acute conditions, the average child had 8.6 days of restricted activity including 4.4 days absent from school (table 4). Of the 8.6 days, 3.7 were days spent in bed.

Currently employed persons in the population 17 years of age and older experienced an annual incidence rate of 155.6 acute conditions per 100 persons (table 9). A currently employed person is defined, for purposes of the Survey, as a person who had a job or business or worked at any time during the 2-week period prior to the week of interview. The rate of acute illness was higher for female workers than for male workers and was also higher for persons in the age group

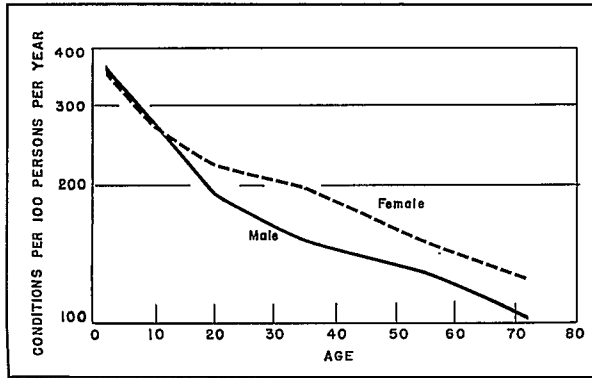


Figure 2. Incidence of acute conditions per 100 persons per year, by sex and age.

17-44 years than for those in the 45 years and older group. The average employee lost 3.3 days from work on account of acute illness or injury (table 10). Respiratory illness contributed 1.2 days to this total, and injuries were responsible for 1.1 days.

Geographic Distribution

For the year July 1963-June 1964, there was a change in the method of classification of the population by place of residence. The residence categories—urban, rural nonfarm, and rural farm—are no longer used to describe the distribution of the population during intercensal years. Instead, the population by place of residence is classified into the following groups: those living in the 212 standard metropolitan statistical areas (SMSA) as defined for the 1960 Decennial Census and those living outside the standard metropolitan statistical areas in places classified as farm or nonfarm.

One effect of the change in classification by place of residence is a mixing of some of the urban and rural elements of the population. Since county boundaries are used in defining SMSA's (except in New England), rural elements within the county bounds are included in the SMSA. On the other hand, urban population not included in the 212 defined SMSA's is classified as non-farm. As a means of assessing the effect of this change in residence classification on the incidence rates of acute conditions, data on acute conditions

collected during the period July 1962-June 1963 are shown in the following table according to both methods of classification:

	Number of acute conditions per 100 persons per year
All areas-----	218.8
Urban-----	223.9
Rural nonfarm-----	217.0
Rural farm-----	176.5

	Number of acute conditions per 100 persons per year
All areas-----	218.8
All SMSA's-----	221.6
Non-SMSA-nonfarm-----	222.2
Non-SMSA-farm-----	176.9

This comparison indicates that the change in classification has not affected the distribution of acute condition data by place of residence to any great extent.

During July 1963-June 1964, residents of all standard metropolitan statistical areas established for the 1960 Decennial Census had an incidence of acute illnesses or injuries of 212.3 conditions per 100 persons per year. Persons residing in nonfarm areas outside of SMSA's had an incidence rate similar to that for the SMSA's, 208.5 per 100 persons. Residents of non-SMSA-farm areas had a significantly lower rate (169.7) than either of the other areas (table 11).

Figure 3 shows the incidence rates by age and place of residence. It is evident that the age distribution of rates in the farm areas was quite different from the pattern in the other areas. Table A shows the effect of age adjustment of the incidence rates by place of residence, indicating that the age distribution of residents of the three areas is not sufficiently different to explain the lower rates among the farm population.

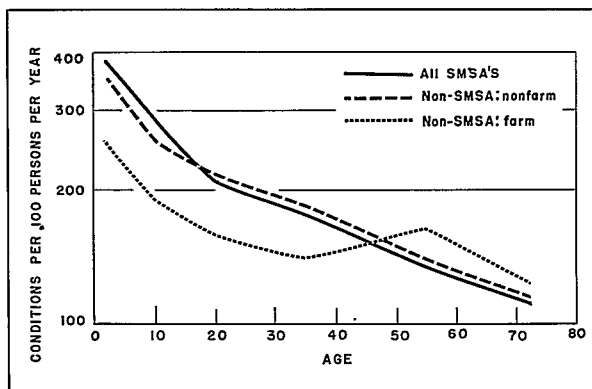


Figure 3. Incidence of acute conditions per 100 persons per year, by residence and age.

The rates of restricted-activity and bed-disability days associated with acute conditions were lowest in the farm areas and highest in the other nonmetropolitan areas (tables 12 and

Table A. Comparison between unadjusted and age-adjusted¹ incidence of acute conditions per 100 persons per year, by residence and region: United States, July 1963-June 1964

Residence and region	Un-adjusted	Age-adjusted
Number of acute conditions per 100 persons per year		
All areas-----	208.5	...
<u>Residence</u>		
All SMSA's-----	212.3	212.6
Non-SMSA-nonfarm---	208.5	208.0
Non-SMSA-farm-----	169.7	169.4
<u>Region</u>		
Northeast-----	192.2	196.6
North Central-----	208.9	208.9
South-----	198.7	197.0
West-----	252.1	249.7

¹Adjusted to the age distribution of the total civilian, noninstitutional population of the United States, July 1963-June 1964.

13). The disability rates for the SMSA's v similar to those for the nonfarm areas.

Tables 14-16 indicate substantially 1c incidence rates in the farm population for of the acute condition groups except for the s groups of influenza and contusions and superficial injuries. The distribution of disability c indicates that the infective and parasitic, diges system, and injuries groups were responsible the lower rates of disability for the farm reside

During July 1963-June 1964 the resident the West Region experienced the highest rat incidence of acute conditions requiring med attention and/or activity restriction (table Persons residing in the Northeast Region the lowest rate. Figure 4 compares the incide rates for the regions during the 7 years of collection in the Health Interview Survey.

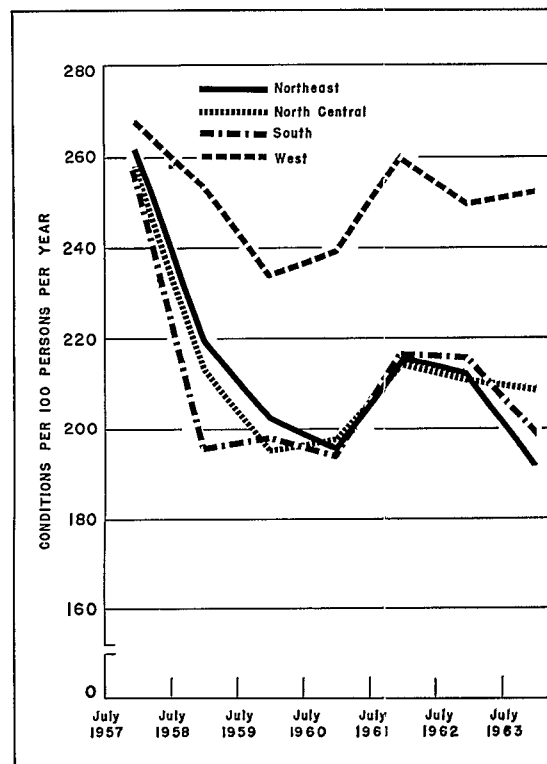


Figure 4. Incidence of acute conditions per persons per year, by region.

the exception of the period July 1957-June 1958, a year in which Asian influenza reached epidemic proportions, the West Region has displayed a substantially higher incidence rate than any of the other regions. This same pattern of high rates in the West Region is apparent when incidence is limited to activity-restricting conditions (fig. 5).

Table A shows that after age adjustment of the incidence rates for each region the rate for the West Region remained substantially greater. This indicates that differences in age distribution among the regions are not the cause. Since the reporting of acute conditions is restricted to only those conditions with medical attention and/or reduced activity, it is of interest to examine the pattern of medical care among the regions. During July-December 1962, information was obtained for the personal health expenditures of the population. Expenditures for personal health services include such items as hospital care, medical and dental services, medicines, and other health related services and products. Per capita

expenditure among the four regions was as follows:

	Medical expenses per person per year
Northeast-----	\$137
North Central-----	\$121
South-----	\$119
West-----	\$150

Another measure related to the distribution of acute conditions in the major regions of the country is the rate of physician visits per person per year. Information on the volume of physician visits was obtained during July 1957-June 1959 and also during July 1963-June 1964. The rates for these two periods, by geographic region, are shown below:

	Physician visits per person per year	
	July 1957-June 1959	July 1963-June 1964
Northeast-----	5.4	4.5
North Central-----	4.7	4.4
South-----	4.7	4.2
West-----	5.7	5.4

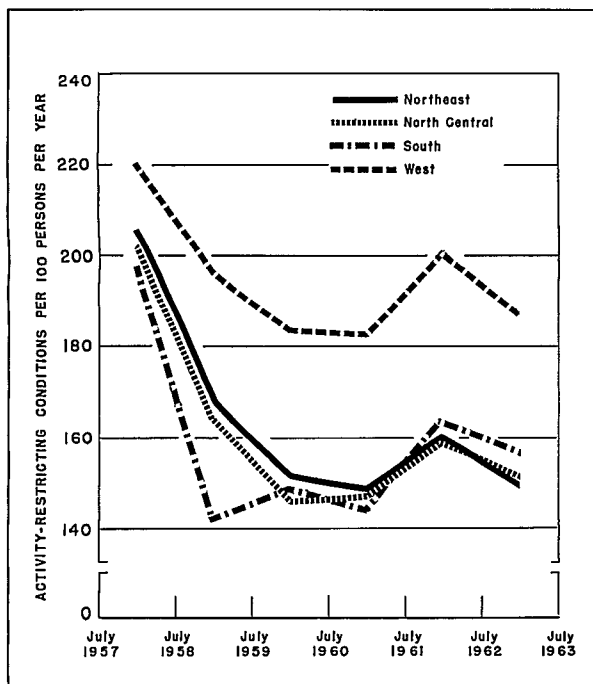


Figure 5. Incidence of activity-restricting acute conditions per 100 persons per year, by region.

Even though the rates for the earlier period reflect increased medical attention during the Asian influenza epidemic, the patterns of medical care are similar to those for acute conditions and health expenses, with the West Region reporting the highest rates. It is quite possible that the greater use of medical facilities by residents of the West Region is sufficient to explain the difference in the incidence rates of acute conditions. On the other hand, it is possible that the converse of this statement is correct. The greater incidence of acute conditions in the West Region required greater use of medical facilities.

Figure 6 shows that the incidence rates by age were highest in the West for most ages. It is of interest to note that for children under 5 years of age and for persons 65 years of age and older the rates were substantially the same for most of the regions. The sex difference in rates by age shown in figure 2 was reflected to a large extent in each of the regions, although the Northeast and West Regions displayed a some-

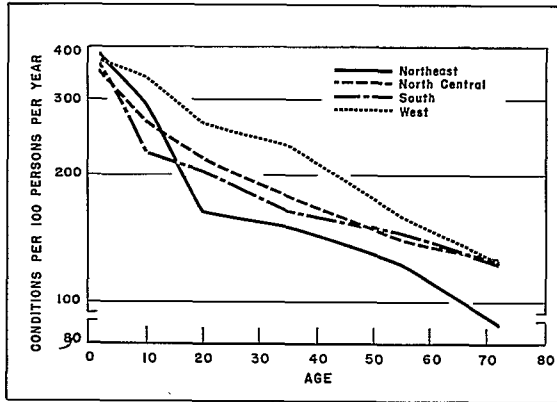


Figure 6. Incidence of acute conditions per 100 persons per year, by region and age.

what different pattern from that of the population as a whole for children under 15 years and persons 65 years and older.

The rates of disability days associated with acute conditions were highest in the West and lowest among residents of the Northeast Region (tables 18, 19, 21, 22).

The condition groups contributing substantially to the high rate for the West Region were

the respiratory conditions group and injuries (table 20). It should be noted that the rate of infectious and parasitic diseases was low in the West and North Central Regions, indicating the possibility that the measles and rubella epidemics were less severe in these areas than in the other regions.

Seasonal Variation: Calendar Quarter

Tables 23-30 show the distribution of rates of acute conditions by calendar quarter during July 1963-June 1964. Figure 1 shows the distribution of rates by quarter for each of the major condition groups. It is evident that the seasonal distribution of respiratory conditions establishes the pattern for the rates per quarter for acute conditions. It should be noted that the curve for injuries differs markedly from that for respiratory conditions, low when the respiratory rate is high and vice versa.

The increased incidence of infectious and parasitic diseases during the 2 quarters of 1964 reflects the epidemics of measles and rubella mentioned earlier in the report.

— ○ ○ ○ —

DETAILED TABLES

Page

EXTENDED LIST OF CONDITION GROUPS, BY SEX

Table	1. Incidence of acute conditions, percent distribution, and number of acute conditions per 100 persons per year, by sex and condition group: United States, July 1963-June 1964-----	12
	2. Days of restricted activity associated with acute conditions and days of restricted activity per 100 persons per year, by sex and condition group: United States, July 1963-June 1964-----	13
	3. Days of bed disability associated with acute conditions and days of bed disability per 100 persons per year, by sex and condition group: United States, July 1963-June 1964-----	14

MEASURES OF THE IMPACT OF ILLNESS

	4. Incidence of acute conditions and number of acute conditions per 100 persons per year, by measures of the impact of illness, sex, and condition group: United States, July 1963-June 1964-----	15
--	---	----

SEX AND AGE

	5. Incidence of acute conditions and number of acute conditions per 100 persons per year, by age, sex, and condition group: United States, July 1963-June 1964-----	16
	6. Days of restricted activity associated with acute conditions and days of restricted activity per 100 persons per year, by age, sex, and condition group: United States, July 1963-June 1964-----	17
	7. Days of bed disability associated with acute conditions and days of bed disability per 100 persons per year, by age, sex, and condition group: United States, July 1963-June 1964-----	18

TIME LOST FROM SCHOOL AND WORK

	8. Days lost from school associated with acute conditions and days lost from school per 100 children (6-16) per year, by sex and condition group: United States, July 1963-June 1964-----	19
	9. Incidence of acute conditions among currently employed persons and number of acute conditions per 100 currently employed persons per year, by age, sex, and condition group: United States, July 1963-June 1964-----	20
	10. Days lost from work associated with acute conditions and days lost from work per 100 currently employed persons per year, by age, sex, and condition group: United States, July 1963-June 1964-----	21

DETAILED TABLES—Continued

RESIDENCE

- Table 11. Incidence of acute conditions and number of acute conditions per 100 persons per year, by residence, sex, and age: United States, July 1963-June 1964-----
12. Days of restricted activity associated with acute conditions and days of restricted activity per 100 persons per year, by residence, sex, and age: United States, July 1963-June 1964-----
 13. Days of bed disability associated with acute conditions and days of bed disability per 100 persons per year, by residence, sex, and age: United States, July 1963-June 1964-----
 14. Incidence of acute conditions and number of acute conditions per 100 persons per year, by residence, sex, and condition group: United States, July 1963-June 1964-----
 15. Days of restricted activity associated with acute conditions and days of restricted activity per 100 persons per year, by residence, sex, and condition group: United States, July 1963-June 1964-----
 16. Days of bed disability associated with acute conditions and days of bed disability per 100 persons per year, by residence, sex, and condition group: United States, July 1963-June 1964-----

REGION

17. Incidence of acute conditions and number of acute conditions per 100 persons per year, by region, sex, and age: United States, July 1963-June 1964-----
18. Days of restricted activity associated with acute conditions and days of restricted activity per 100 persons per year, by region, sex, and age: United States, July 1963-June 1964-----
19. Days of bed disability associated with acute conditions and days of bed disability per 100 persons per year, by region, sex, and age: United States, July 1963-June 1964-----
20. Incidence of acute conditions and number of acute conditions per 100 persons per year, by region, sex, and condition group: United States, July 1963-June 1964-----
21. Days of restricted activity associated with acute conditions and days of restricted activity per 100 persons per year, by region, sex, and condition group: United States, July 1963-June 1964-----
22. Days of bed disability associated with acute conditions and days of bed disability per 100 persons per year, by region, sex, and condition group: United States, July 1963-June 1964-----

CALENDAR QUARTER

23. Incidence of acute conditions per quarter and number of acute conditions per 100 persons per quarter, by sex and age: United States, July 1963-June 1964-----
24. Incidence of acute conditions per quarter and number of acute conditions per 100 persons per quarter, by sex and condition group: United States, July 1963-June 1964-----
25. Days of restricted activity associated with acute conditions per quarter and days of restricted activity per 100 persons per quarter, by sex and age: United States, July 1963-June 1964-----
26. Days of restricted activity associated with acute conditions per quarter and days of restricted activity per 100 persons per quarter, by sex and condition group: United States, July 1963-June 1964-----
27. Days of bed disability associated with acute conditions per quarter and days of bed disability per 100 persons per quarter, by sex and age: United States, July 1963-June 1964-----

DETAILED TABLES—Continued

Page

CALENDAR QUARTER—Continued

Table 28.	Days of bed disability associated with acute conditions per quarter and days of bed disability per 100 persons per quarter, by sex and condition group: United States, July 1963-June 1964-----	39
29.	Incidence of acute respiratory conditions and associated disability days per quarter and number of acute respiratory conditions per 100 persons per quarter, by age: United States, July 1963-June 1964-----	40
30.	Incidence of injuries and associated disability days per quarter and number of injuries per 100 persons, by age: United States, July 1963-June 1964-----	41

POPULATION

31.	Population used in obtaining rates shown in this publication, by residence, region, sex, and age: United States, July 1963-June 1964-----	42
32.	Population of currently employed persons, by sex and age: United States, July 1963-June 1964-----	43
33.	Population used in obtaining rates shown in this publication, by quarter, sex, and age: United States, July 1963-June 1964-----	44

TABLE 1. INCIDENCE OF ACUTE CONDITIONS, PERCENT DISTRIBUTION, AND NUMBER OF ACUTE CONDITIONS PER 100 PERSONS PER YEAR, BY SEX AND CONDITION GROUP: UNITED STATES, JULY 1963-JUNE 1964

[Data are based on household interviews of the civilian, noninstitutional population. The survey design, general qualifications, and information on the reliability of the estimates are given in Appendix I. Definitions of terms are given in Appendix II]

CONDITION GROUP	INCIDENCE OF ACUTE CONDITIONS IN THOUSANDS			PERCENT DISTRIBUTION			NUMBER OF ACUTE CONDITIONS PER 100 PERSONS PER YEAR		
	BOTH SEXES	MALE	FEMALE	BOTH SEXES	MALE	FEMALE	BOTH SEXES	MALE	FEM
ALL ACUTE CONDITIONS-----	387,358	180,182	207,175	100.0	100.0	100.0	208.5	200.0	21
INFECTIVE AND PARASITIC DISEASES-----	55,283	26,002	29,281	14.3	14.4	14.1	29.8	28.9	3
COMMON CHILDHOOD DISEASES-----	24,666	12,987	11,680	6.4	7.2	5.6	13.3	14.4	1
THE VIRUS, N.O.S.-----	24,105	10,248	13,857	6.2	5.7	6.7	13.0	11.4	1
OTHER INFECTIVE AND PARASITIC DISEASES-----	6,511	2,767	3,744	1.7	1.5	1.8	3.5	3.1	
RESPIRATORY CONDITIONS-----	204,301	93,808	110,493	52.7	52.1	53.3	110.0	104.1	11
UPPER RESPIRATORY CONDITIONS-----	133,797	62,119	71,678	34.5	34.5	34.6	72.0	69.0	7
COMMON COLD-----	103,393	47,990	55,403	26.7	26.6	26.7	53.6	53.3	5
OTHER ACUTE UPPER RESPIRATORY CONDITIONS-----	30,403	14,129	16,275	7.8	7.8	7.9	16.4	15.7	1
INFLUENZA-----	61,980	27,830	34,150	16.0	15.4	16.5	33.4	30.9	3
INFLUENZA WITH DIGESTIVE MANIFESTATIONS-----	6,571	3,103	3,468	1.7	1.7	1.7	3.5	3.4	
OTHER INFLUENZA-----	55,408	24,727	30,682	14.3	13.7	14.8	29.8	27.5	3
OTHER RESPIRATORY CONDITIONS-----	8,524	3,859	4,666	2.2	2.1	2.3	4.6	4.3	
PNEUMONIA-----	3,026	1,394	1,631	0.8	0.8	0.8	1.6	1.5	
BRONCHITIS-----	3,159	1,394	1,764	0.8	0.8	0.9	1.7	1.5	
OTHER ACUTE RESPIRATORY CONDITIONS-----	2,340	1,070	1,270	0.6	0.6	0.6	1.3	1.2	
DIGESTIVE SYSTEM CONDITIONS-----	20,608	9,961	10,647	5.3	5.5	5.1	11.1	11.1	1
DENTAL CONDITIONS-----	8,711	4,363	4,349	2.2	2.4	2.1	4.7	4.8	
FUNCTIONAL AND SYMPTOMATIC UPPER GASTROINTESTINAL DISORDERS, N.E.C.-----	4,728	2,006	2,722	1.2	1.1	1.3	2.5	2.2	
OTHER DIGESTIVE SYSTEM CONDITIONS-----	7,168	3,592	3,576	1.9	2.0	1.7	3.9	4.0	
INJURIES-----	55,226	32,895	22,331	14.3	18.3	10.8	29.7	36.5	2
FRACTURES, DISLOCATIONS, SPRAINS, AND STRAINS-----	16,366	9,899	6,467	4.2	5.5	3.1	8.8	11.0	
FRACTURES AND DISLOCATIONS-----	5,353	3,523	1,830	1.4	2.0	0.9	2.9	3.9	
SPRAINS AND STRAINS-----	11,013	6,377	4,636	2.8	3.5	2.2	5.9	7.1	
OPEN WOUNDS AND LACERATIONS-----	15,835	10,090	5,746	4.1	5.6	2.8	8.5	11.2	
CONTUSIONS AND SUPERFICIAL INJURIES-----	10,421	5,999	4,422	2.7	3.3	2.1	5.6	6.7	
OTHER CURRENT INJURIES-----	12,603	6,907	5,697	3.3	3.8	2.7	6.8	7.7	
ALL OTHER ACUTE CONDITIONS-----	51,941	17,517	34,423	13.4	9.7	16.6	28.0	19.4	3
DISEASES OF THE EAR-----	8,269	3,488	4,781	2.1	1.9	2.3	4.5	3.9	
HEADACHES-----	4,151	1,375	2,776	1.1	0.8	1.3	2.2	1.5	
GENITOURINARY DISORDERS-----	6,672	895	5,777	1.7	0.5	2.8	3.6	1.0	
DELIVERIES AND DISORDERS OF PREGNANCY AND THE PUERPERIUM-----	5,718	...	5,718	1.5	...	2.8	3.1	...	
DISEASES OF THE SKIN-----	6,845	4,025	2,820	1.8	2.2	1.4	3.7	4.5	
DISEASES OF THE MUSCULOSKELETAL SYSTEM-----	4,506	1,962	2,544	1.2	1.1	1.2	2.4	2.2	
ALL OTHER ACUTE CONDITIONS-----	15,781	5,773	10,007	4.1	3.2	4.8	8.5	6.4	1

NOTES: Excluded from these statistics are all conditions involving neither restricted activity nor medical attention.

N.o.s.—not otherwise specified; n.e.c.—not elsewhere classified.

TABLE 2. DAYS OF RESTRICTED ACTIVITY ASSOCIATED WITH ACUTE CONDITIONS AND DAYS OF RESTRICTED ACTIVITY PER 100 PERSONS PER YEAR, BY SEX AND CONDITION GROUP: UNITED STATES, JULY 1963-JUNE 1964

[Data are based on household interviews of the civilian, noninstitutional population. The survey design, general qualifications, and information on the reliability of the estimates are given in Appendix I. Definitions of terms are given in Appendix II]

CONDITION GROUP	DAYS OF RESTRICTED ACTIVITY IN THOUSANDS			DAYS OF RESTRICTED ACTIVITY PER 100 PERSONS PER YEAR		
	BOTH SEXES	MALE	FEMALE	BOTH SEXES	MALE	FEMALE
ALL ACUTE CONDITIONS-----	1,507,691	659,107	848,584	811.5	731.7	886.5
INFECTIVE AND PARASITIC DISEASES----	239,096	113,327	125,770	128.7	125.8	131.4
COMMON CHILDHOOD DISEASES-----	132,196	66,786	65,410	71.2	74.1	68.3
THE VIRUS, N.O.S.-----	67,203	28,791	38,412	36.2	32.0	40.1
OTHER INFECTIVE AND PARASITIC DISEASES-----	39,698	17,750	21,948	21.4	19.7	22.9
RESPIRATORY CONDITIONS-----	610,380	269,246	341,133	328.5	298.9	356.4
UPPER RESPIRATORY CONDITIONS-----	330,654	144,541	186,112	178.0	160.5	194.4
COMMON COLD-----	241,621	103,903	137,718	130.0	115.3	143.9
OTHER ACUTE UPPER RESPIRATORY CONDITIONS-----	89,032	40,638	48,394	47.9	45.1	50.6
INFLUENZA-----	211,509	93,231	118,278	113.8	103.5	123.6
INFLUENZA WITH DIGESTIVE MANIFESTATIONS-----	16,976	7,430	9,546	9.1	8.2	10.0
OTHER INFLUENZA-----	194,533	85,801	108,732	104.7	95.3	113.6
OTHER RESPIRATORY CONDITIONS-----	68,218	31,474	36,743	36.7	34.9	38.4
PNEUMONIA-----	37,529	16,185	21,344	20.2	18.0	22.3
BRONCHITIS-----	17,910	9,155	8,754	9.6	10.2	9.1
OTHER ACUTE RESPIRATORY CONDITIONS-----	12,779	6,134	6,645	6.9	6.8	6.9
DIGESTIVE SYSTEM CONDITIONS-----	69,488	31,741	37,746	37.4	35.2	39.4
DENTAL CONDITIONS-----	17,786	9,460	8,325	9.6	10.5	8.7
FUNCTIONAL AND SYMPTOMATIC UPPER GASTROINTESTINAL DISORDERS, N.E.C.-----	11,972	4,959	7,013	6.4	5.5	7.3
OTHER DIGESTIVE SYSTEM CONDITIONS-----	39,730	17,322	22,407	21.4	19.2	23.4
INJURIES-----	330,590	177,102	153,488	177.9	196.6	160.4
FRACTURES, DISLOCATIONS, SPRAINS, AND STRAINS-----	173,279	91,714	81,565	93.3	101.8	85.2
FRACTURES AND DISLOCATIONS-----	105,477	55,374	50,103	56.8	61.5	52.3
SPRAINS AND STRAINS-----	67,802	36,340	31,462	36.5	40.3	32.9
OPEN WOUNDS AND LACERATIONS-----	44,827	25,957	18,870	24.1	28.8	19.7
CONTUSIONS AND SUPERFICIAL INJURIES-----	49,825	24,146	25,679	26.8	26.8	26.8
OTHER CURRENT INJURIES-----	62,660	35,286	27,374	33.7	39.2	28.6
ALL OTHER ACUTE CONDITIONS-----	258,137	67,691	190,446	138.9	75.1	199.0
DISEASES OF THE EAR-----	30,012	11,623	18,389	16.2	12.9	19.2
HEADACHES-----	3,688	"	2,595	2.0	"	2.7
GENITOURINARY DISORDERS-----	36,922	6,112	30,810	19.9	6.8	32.2
DELIVERIES AND DISORDERS OF PREGNANCY AND THE PUERPERIUM----	56,156	...	56,156	30.2	...	58.7
DISEASES OF THE SKIN-----	21,422	10,734	10,688	11.5	11.9	11.2
DISEASES OF THE MUSCULOSKELETAL SYSTEM-----	28,489	11,620	16,869	15.3	12.9	17.6
ALL OTHER ACUTE CONDITIONS-----	81,447	26,508	54,939	43.8	29.4	57.4

NOTE: N.o.s.—not otherwise specified; n.e.c.—not elsewhere classified.

TABLE 3. DAYS OF BED DISABILITY ASSOCIATED WITH ACUTE CONDITIONS AND DAYS OF BED DISABILITY PER 100 PERSON PER YEAR, BY SEX AND CONDITION GROUP: UNITED STATES, JULY 1963-JUNE 1964

[Data are based on household interviews of the civilian, noninstitutional population. The survey design, general qualifications, and information on the reliability of the estimates are given in Appendix I. Definitions of terms are given in Appendix II]

CONDITION GROUP	DAYS OF BED DISABILITY IN THOUSANDS			DAYS OF BED DISABILITY PER 100 PERSONS PER YEAR		
	BOTH SEXES	MALE	FEMALE	BOTH SEXES	MALE	FEMALE
ALL ACUTE CONDITIONS-----	642,741	272,897	369,844	345.9	303.0	384.1
INFECTIVE AND PARASITIC DISEASES----	111,138	51,041	60,098	59.8	56.7	62.9
COMMON CHILDHOOD DISEASES-----	54,517	27,978	26,539	29.3	31.1	27.5
THE VIRUS, N.O.S.-----	37,799	16,000	21,799	20.3	17.8	22.8
OTHER INFECTIVE AND PARASITIC DISEASES-----	18,822	7,063	11,759	10.1	7.8	12.6
RESPIRATORY CONDITIONS-----	291,924	131,944	159,980	157.1	146.5	168.6
UPPER RESPIRATORY CONDITIONS-----	131,103	60,760	70,343	70.6	67.5	73.7
COMMON COLD-----	89,779	42,297	47,481	48.3	47.0	49.6
OTHER ACUTE UPPER RESPIRATORY CONDITIONS-----	41,324	18,463	22,862	22.2	20.5	24.4
INFLUENZA-----	117,642	50,896	66,745	63.3	56.5	70.7
INFLUENZA WITH DIGESTIVE MANIFESTATIONS-----	9,803	4,686	5,117	5.3	5.2	5.4
OTHER INFLUENZA-----	107,839	46,211	61,628	58.0	51.3	65.3
OTHER RESPIRATORY CONDITIONS-----	43,179	20,288	22,891	23.2	22.5	24.2
PNEUMONIA-----	28,060	12,830	15,230	15.1	14.2	16.0
BRONCHITIS-----	9,607	4,988	4,619	5.2	5.5	4.9
OTHER ACUTE RESPIRATORY CONDITIONS-----	5,513	2,470	3,043	3.0	2.7	3.3
DIGESTIVE SYSTEM CONDITIONS-----	36,387	15,007	21,381	19.6	16.7	22.1
DENTAL CONDITIONS-----	7,096	3,775	3,322	3.8	4.2	3.4
FUNCTIONAL AND SYMPTOMATIC UPPER GASTROINTESTINAL DISORDERS, N.E.C.-----	6,259	2,134	4,125	3.4	2.4	4.4
OTHER DIGESTIVE SYSTEM CONDITIONS-----	23,032	9,098	13,934	12.4	10.1	17.3
INJURIES-----	96,493	50,812	45,681	51.9	56.4	46.9
FRACTURES, DISLOCATIONS, SPRAINS, AND STRAINS-----	48,138	25,442	22,697	25.9	28.2	23.6
FRACTURES AND DISLOCATIONS-----	31,296	15,615	15,682	16.8	17.3	16.3
SPRAINS AND STRAINS-----	16,842	9,827	7,015	9.1	10.9	7.0
OPEN WOUNDS AND LACERATIONS-----	12,653	6,669	5,983	6.8	7.4	6.2
CONTUSIONS AND SUPERFICIAL INJURIES-----	13,375	6,893	6,482	7.2	7.7	6.7
OTHER CURRENT INJURIES-----	22,327	11,807	10,519	12.0	13.1	11.0
ALL OTHER ACUTE CONDITIONS-----	106,798	24,094	82,704	57.5	26.7	108.1
DISEASES OF THE EAR-----	9,457	3,822	5,635	5.1	4.2	6.0
HEADACHES-----	1,794	"	"	1.0	"	"
GENITOURINARY DISORDERS-----	18,143	2,462	15,681	9.8	2.7	17.1
DELIVERIES AND DISORDERS OF PREGNANCY AND THE PUERPERIUM-----	30,447	...	30,447	16.4	...	16.4
DISEASES OF THE SKIN-----	6,643	3,318	3,325	3.6	3.7	3.5
DISEASES OF THE MUSCULOSKELETAL SYSTEM-----	9,714	4,526	5,187	5.2	5.0	5.4
ALL OTHER ACUTE CONDITIONS-----	30,600	9,302	21,298	16.5	10.3	22.8

NOTE: N.o.s.—not otherwise specified; n.e.c.—not elsewhere classified.

TABLE 4. INCIDENCE OF ACUTE CONDITIONS AND NUMBER OF ACUTE CONDITIONS PER 100 PERSONS PER YEAR, BY MEASURES OF THE IMPACT OF ILLNESS, SEX, AND CONDITION GROUP: UNITED STATES, JULY 1963-JUNE 1964

[Data are based on household interviews of the civilian, noninstitutional population. The survey design, general qualifications, and information on the reliability of the estimates are given in Appendix I. Definitions of terms are given in Appendix II]

SEX AND CONDITION GROUP	MEASURES OF THE IMPACT OF ILLNESS							
	TOTAL	MEDICALLY ATTENDED ONLY	MEDICALLY ATTENDED AND ACTIVITY RESTRICTING	ACTIVITY RESTRICTING ONLY (NOT MEDICALLY ATTENDED)	TOTAL	MEDICALLY ATTENDED ONLY	MEDICALLY ATTENDED AND ACTIVITY RESTRICTING	ACTIVITY RESTRICTING ONLY (NOT MEDICALLY ATTENDED)
BOTH SEXES	INCIDENCE OF ACUTE CONDITIONS IN THOUSANDS				NUMBER OF ACUTE CONDITIONS PER 100 PERSONS PER YEAR			
ALL ACUTE CONDITIONS-----	387,358	109,912	140,293	137,153	208.5	59.2	75.5	73.8
INFECTIVE AND PARASITIC DISEASES-----	55,283	6,591	25,367	23,325	29.8	3.5	13.7	12.6
RESPIRATORY CONDITIONS-----	204,301	48,385	64,198	91,718	110.0	26.0	34.6	49.4
UPPER RESPIRATORY CONDITIONS-----	133,797	41,456	37,724	54,617	72.0	22.3	20.3	29.4
INFLUENZA-----	61,980	4,737	20,652	36,591	33.4	2.5	11.1	19.7
OTHER RESPIRATORY CONDITIONS-----	8,524	2,193	5,822	*	4.6	1.2	3.1	*
DIGESTIVE SYSTEM CONDITIONS-----	20,608	8,209	6,999	5,399	11.1	4.4	3.8	2.9
INJURIES-----	55,226	25,014	22,362	7,850	29.7	13.5	12.0	4.2
ALL OTHER ACUTE CONDITIONS-----	51,941	21,712	21,368	8,861	28.0	11.7	11.5	4.8
MALE								
ALL ACUTE CONDITIONS-----	180,182	53,092	64,884	62,206	200.0	58.9	72.0	69.1
INFECTIVE AND PARASITIC DISEASES-----	26,002	3,423	11,452	11,127	28.9	3.8	12.7	12.4
RESPIRATORY CONDITIONS-----	93,808	21,680	30,424	41,704	104.1	24.1	33.8	46.3
UPPER RESPIRATORY CONDITIONS-----	62,119	18,715	18,512	24,892	69.0	20.8	20.6	27.6
INFLUENZA-----	27,830	1,922	9,283	16,625	30.9	2.1	10.3	18.5
OTHER RESPIRATORY CONDITIONS-----	3,859	1,043	2,629	*	4.3	1.2	2.9	*
DIGESTIVE SYSTEM CONDITIONS-----	9,961	4,151	3,278	2,532	11.1	4.6	3.6	2.8
INJURIES-----	32,895	15,358	13,669	3,867	36.5	17.0	15.2	4.3
ALL OTHER ACUTE CONDITIONS-----	17,517	8,481	6,061	2,975	19.4	9.4	6.7	3.3
FEMALE								
ALL ACUTE CONDITIONS-----	207,175	56,820	75,409	74,946	216.4	59.4	78.8	78.3
INFECTIVE AND PARASITIC DISEASES-----	29,281	3,168	13,915	12,198	30.6	3.3	14.5	12.7
RESPIRATORY CONDITIONS-----	110,493	26,706	33,774	50,013	115.4	27.9	35.3	52.2
UPPER RESPIRATORY CONDITIONS-----	71,678	22,741	19,212	29,725	74.9	23.8	20.1	31.1
INFLUENZA-----	34,150	2,815	11,369	19,966	35.7	2.9	11.9	20.9
OTHER RESPIRATORY CONDITIONS-----	4,666	1,150	3,193	*	4.9	1.2	3.3	*
DIGESTIVE SYSTEM CONDITIONS-----	10,647	4,059	3,721	2,867	11.1	4.2	3.9	3.0
INJURIES-----	22,331	9,656	8,692	3,983	23.3	10.1	9.1	4.2
ALL OTHER ACUTE CONDITIONS-----	34,423	13,230	15,308	5,885	36.0	13.8	16.0	6.1

NOTE: Excluded from these statistics are all conditions involving neither restricted activity nor medical attention.

TABLE 5. INCIDENCE OF ACUTE CONDITIONS AND NUMBER OF ACUTE CONDITIONS PER 100 PERSONS PER YEAR, BY SEX, AND CONDITION GROUP: UNITED STATES, JULY 1963-JUNE 1964

Data are based on household interviews of the civilian, noninstitutional population. The survey design, general qualifications, and information on the reliability of the estimates are given in Appendix I. Definitions of terms are given in Appendix II

SEX AND CONDITION GROUP	ALL AGES	UNDER 6	6-16	17-44	45 & OVER	ALL AGES	UNDER 6	6-16	17-44	45 & OVER
	INCIDENCE OF ACUTE CONDITIONS IN THOUSANDS					NUMBER OF ACUTE CONDITIONS PER 100 PERSONS PER YEAR				
BOTH SEXES										
ALL ACUTE CONDITIONS-	387,358	90,037	103,775	121,462	72,084	208.5	360.5	253.4	186.2	111.4
INFECTIVE AND PARASITIC DISEASES-----	55,283	16,318	22,658	10,728	5,578	29.8	65.3	55.3	16.4	11.4
RESPIRATORY CONDITIONS-----	204,301	50,358	52,366	61,229	40,348	110.0	201.6	127.9	93.8	55.6
UPPER RESPIRATORY CONDITIONS-----	133,797	37,958	34,044	36,289	25,507	72.0	152.0	83.1	55.6	35.0
INFLUENZA-----	61,980	9,570	16,892	22,803	12,715	33.4	38.3	41.2	35.0	3.3
OTHER RESPIRATORY CONDITIONS-----	8,524	2,831	1,430	2,137	2,126	4.6	11.3	3.5	3.3	11.8
DIGESTIVE SYSTEM CONDITIONS-----	20,608	4,165	4,431	7,724	4,289	11.1	16.7	10.8	11.8	31.2
INJURIES-----	55,226	9,380	13,394	20,361	12,091	29.7	37.6	32.7	31.2	32.8
ALL OTHER ACUTE CONDITIONS-----	51,941	9,816	10,927	21,420	9,778	28.0	39.3	26.7	32.8	
MALE										
ALL ACUTE CONDITIONS-	180,182	46,196	53,013	49,987	30,986	200.0	364.4	254.5	161.9	111.4
INFECTIVE AND PARASITIC DISEASES-----	26,002	8,987	11,331	3,566	2,116	28.9	70.9	54.4	11.6	11.6
RESPIRATORY CONDITIONS-----	93,808	25,420	25,650	24,873	17,865	104.1	200.5	123.1	80.6	55.6
UPPER RESPIRATORY CONDITIONS-----	62,119	19,414	16,454	15,284	10,968	69.0	153.1	79.0	49.5	35.0
INFLUENZA-----	27,830	4,631	8,646	8,636	5,916	30.9	36.5	41.5	28.0	3.1
OTHER RESPIRATORY CONDITIONS-----	3,859	1,375	"	953	980	4.3	10.8	"	3.1	10.7
DIGESTIVE SYSTEM CONDITIONS-----	9,961	2,561	2,096	3,292	2,012	11.1	20.2	10.1	10.7	41.8
INJURIES-----	32,895	5,076	8,770	12,903	6,146	36.5	40.0	42.1	41.8	17.3
ALL OTHER ACUTE CONDITIONS-----	17,517	4,151	5,165	5,353	2,848	19.4	32.7	24.8	17.3	
FEMALE										
ALL ACUTE CONDITIONS-	207,175	43,841	50,761	71,475	41,098	216.4	356.6	252.2	207.9	111.4
INFECTIVE AND PARASITIC DISEASES-----	29,281	7,331	11,326	7,162	3,462	30.6	59.6	56.3	20.8	11.4
RESPIRATORY CONDITIONS-----	110,493	24,938	26,715	36,356	22,484	115.4	202.8	132.7	105.8	55.6
UPPER RESPIRATORY CONDITIONS-----	71,678	18,544	17,590	21,005	14,539	74.9	150.8	87.4	61.1	35.0
INFLUENZA-----	34,150	4,938	8,246	14,167	6,799	35.7	40.2	41.0	41.2	3.4
OTHER RESPIRATORY CONDITIONS-----	4,666	1,456	880	1,184	1,146	4.9	11.8	4.4	3.4	12.9
DIGESTIVE SYSTEM CONDITIONS-----	10,647	1,604	2,334	4,432	2,277	11.1	13.0	11.6	12.9	21.7
INJURIES-----	22,331	4,304	4,624	7,458	5,945	23.3	35.0	23.0	21.7	46.7
ALL OTHER ACUTE CONDITIONS-----	34,423	5,664	5,762	16,067	6,930	36.0	46.1	28.6	46.7	

NOTE: Excluded from these statistics are all conditions involving neither restricted activity nor medical attention.

TABLE 6. DAYS OF RESTRICTED ACTIVITY ASSOCIATED WITH ACUTE CONDITIONS AND DAYS OF RESTRICTED ACTIVITY PER 100 PERSONS PER YEAR, BY AGE, SEX, AND CONDITION GROUP: UNITED STATES, JULY 1963-JUNE 1964

[Data are based on household interviews of the civilian, noninstitutional population. The survey design, general qualifications, and information on the reliability of the estimates are given in Appendix I. Definitions of terms are given in Appendix II.]

SEX AND CONDITION GROUP	ALL AGES	UNDER 6	6-16	17-44	45 & OVER	ALL AGES	UNDER 6	6-16	17-44	45 & OVER
BOTH SEXES	DAYS OF RESTRICTED ACTIVITY IN THOUSANDS					DAYS OF RESTRICTED ACTIVITY PER 100 PERSONS PER YEAR				
ALL ACUTE CONDITIONS--	1,507,691	240,516	351,825	465,181	450,170	811.5	963.1	859.0	713.0	824.1
INFECTIVE AND PARASITIC DISEASES-----	239,096	64,825	108,691	37,035	28,545	128.7	259.6	265.4	56.8	52.3
RESPIRATORY CONDITIONS--	610,380	123,960	146,487	163,876	176,057	328.5	496.4	357.7	251.2	322.3
UPPER RESPIRATORY CONDITIONS-----	330,654	81,485	86,199	82,103	80,866	178.0	326.3	210.5	125.8	148.0
INFLUENZA-----	211,509	24,390	50,687	69,357	67,075	113.8	97.7	123.8	106.3	122.8
OTHER RESPIRATORY CONDITIONS-----	68,218	18,085	9,601	12,416	28,116	36.7	72.4	23.4	19.0	51.5
DIGESTIVE SYSTEM CONDITIONS-----	69,488	10,593	10,849	21,994	26,052	37.4	42.4	26.5	33.7	47.7
INJURIES-----	330,590	14,654	53,194	119,291	143,451	177.9	58.7	129.9	182.8	262.6
ALL OTHER ACUTE CONDITIONS-----	258,137	26,484	32,603	122,984	76,065	138.9	106.1	79.6	188.5	139.3
MALE										
ALL ACUTE CONDITIONS--	659,107	123,173	175,157	168,979	191,798	731.7	971.5	840.9	547.4	746.4
INFECTIVE AND PARASITIC DISEASES-----	113,327	35,290	53,173	13,145	11,718	125.8	278.3	255.3	42.6	45.6
RESPIRATORY CONDITIONS--	269,246	61,930	69,409	61,367	76,540	298.9	488.4	333.2	198.8	297.9
UPPER RESPIRATORY CONDITIONS-----	144,541	42,594	41,064	30,323	30,560	160.5	335.9	197.1	98.2	118.9
INFLUENZA-----	93,231	11,304	24,407	26,389	31,130	103.5	89.2	117.2	85.5	121.1
OTHER RESPIRATORY CONDITIONS-----	31,474	8,031	3,938	4,655	14,850	34.9	63.3	18.9	15.1	57.8
DIGESTIVE SYSTEM CONDITIONS-----	31,741	6,631	4,966	7,166	12,978	35.2	52.3	23.8	23.2	50.5
INJURIES-----	177,102	8,526	32,763	70,441	65,372	196.6	67.2	157.3	228.2	254.4
ALL OTHER ACUTE CONDITIONS-----	67,691	10,797	14,846	16,859	25,190	75.1	85.2	71.3	54.6	98.0
FEMALE										
ALL ACUTE CONDITIONS--	848,584	117,343	176,668	296,202	258,372	886.5	954.5	877.8	861.7	893.2
INFECTIVE AND PARASITIC DISEASES-----	125,770	29,535	55,518	23,890	16,827	131.4	240.2	275.9	69.5	58.2
RESPIRATORY CONDITIONS--	341,133	62,031	77,078	102,509	99,516	356.4	504.6	383.0	298.2	344.0
UPPER RESPIRATORY CONDITIONS-----	186,112	38,891	45,136	51,780	50,306	194.4	316.3	224.3	150.6	173.9
INFLUENZA-----	118,278	13,086	26,279	42,968	35,944	123.6	106.4	130.6	125.0	124.3
OTHER RESPIRATORY CONDITIONS-----	36,743	10,054	5,663	7,761	13,266	38.4	81.8	28.1	22.6	45.9
DIGESTIVE SYSTEM CONDITIONS-----	37,746	3,962	5,883	14,828	13,073	39.4	32.2	29.2	43.1	45.2
INJURIES-----	153,488	6,128	20,431	48,850	78,080	160.4	49.8	101.5	142.1	269.9
ALL OTHER ACUTE CONDITIONS-----	190,446	15,667	17,758	106,126	50,875	199.0	127.6	88.2	308.7	175.9

TABLE 7. DAYS OF BED DISABILITY ASSOCIATED WITH ACUTE CONDITIONS AND DAYS OF BED DISABILITY PER 100 PERSONS PER YEAR, BY AGE, SEX, AND CONDITION GROUP: UNITED STATES, JULY 1963-JUNE 1964

[Data are based on household interviews of the civilian, noninstitutional population. The survey design, general qualifications, and information on the reliability of estimates are given in Appendix I. Definitions of terms are given in Appendix II]

SEX AND CONDITION GROUP	ALL AGES	UNDER 6	6-16	17-44	45 & OVER	ALL AGES	UNDER 6	6-16	17-44	45 & OVER
BOTH SEXES	DAYS OF BED DISABILITY IN THOUSANDS					DAYS OF BED DISABILITY PER 100 PERSONS PER YEAR				
ALL ACUTE CONDITIONS--	642,741	110,569	153,273	211,479	167,420	345.9	442.8	374.2	324.1	30
INFECTIVE AND PARASITIC DISEASES-----	111,138	28,880	47,776	21,448	13,034	59.8	115.6	116.7	32.9	2
RESPIRATORY CONDITIONS--	291,924	57,798	77,676	84,089	72,361	157.1	231.4	189.7	128.9	13
UPPER RESPIRATORY CONDITIONS-----	131,103	29,575	40,806	36,489	24,234	70.6	118.4	99.6	55.9	4
INFLUENZA-----	117,642	14,513	30,755	38,894	33,479	63.3	58.1	75.1	59.6	6
OTHER RESPIRATORY CONDITIONS-----	43,179	13,710	6,115	8,707	14,648	23.2	54.9	14.9	13.3	2
DIGESTIVE SYSTEM CONDITIONS-----	36,387	5,293	4,949	11,731	14,415	19.6	21.2	12.1	18.0	2
INJURIES-----	96,493	4,337	11,324	35,921	44,911	51.9	17.4	27.6	55.1	8
ALL OTHER ACUTE CONDITIONS-----	106,798	14,260	11,548	58,290	22,700	57.5	57.1	28.2	89.3	4
MALE										
ALL ACUTE CONDITIONS--	272,897	56,358	70,618	73,704	72,216	303.0	444.5	339.0	238.7	28
INFECTIVE AND PARASITIC DISEASES-----	51,041	14,824	23,777	6,952	5,488	56.7	116.9	114.1	22.5	2
RESPIRATORY CONDITIONS--	131,944	29,879	34,823	33,494	33,748	146.5	235.7	167.2	108.5	13
UPPER RESPIRATORY CONDITIONS-----	60,760	16,806	18,025	14,840	11,088	67.5	132.5	86.5	48.1	4
INFLUENZA-----	50,896	6,950	14,440	15,054	14,453	56.5	54.8	69.3	48.8	5
OTHER RESPIRATORY CONDITIONS-----	20,288	6,123	2,358	3,600	8,207	22.5	48.3	11.3	11.7	3
DIGESTIVE SYSTEM CONDITIONS-----	15,007	3,338	1,981	3,417	6,271	16.7	26.3	9.5	11.1	2
INJURIES-----	50,812	2,521	5,396	24,016	18,880	56.4	19.9	25.9	77.8	7
ALL OTHER ACUTE CONDITIONS-----	24,094	5,796	4,642	5,826	7,830	26.7	45.7	22.3	18.9	3
FEMALE										
ALL ACUTE CONDITIONS--	369,844	54,210	82,655	137,775	95,204	386.4	440.9	410.7	400.8	32
INFECTIVE AND PARASITIC DISEASES-----	60,098	14,055	24,000	14,496	7,546	62.8	114.3	119.2	42.2	2
RESPIRATORY CONDITIONS--	159,980	27,919	42,853	50,595	38,613	167.1	227.1	212.9	147.2	13
UPPER RESPIRATORY CONDITIONS-----	70,343	12,769	22,781	21,648	13,145	73.5	103.9	113.2	63.0	4
INFLUENZA-----	66,745	7,564	16,315	23,840	19,026	69.7	61.5	81.1	69.4	6
OTHER RESPIRATORY CONDITIONS-----	22,891	7,587	3,757	5,106	6,441	23.9	61.7	18.7	14.9	2
DIGESTIVE SYSTEM CONDITIONS-----	21,381	1,955	2,967	8,314	8,143	22.3	15.9	14.7	24.2	2
INJURIES-----	45,681	1,816	5,928	11,906	26,031	47.7	14.8	29.5	34.6	9
ALL OTHER ACUTE CONDITIONS-----	82,704	8,464	6,906	52,463	14,870	86.4	68.8	34.3	152.6	5

TABLE 8. DAYS LOST FROM SCHOOL ASSOCIATED WITH ACUTE CONDITIONS AND DAYS LOST FROM SCHOOL PER 100 CHILDREN (6-16) PER YEAR, BY SEX AND CONDITION GROUP: UNITED STATES, JULY 1963-JUNE 1964

[Data are based on household interviews of the civilian, noninstitutional population. The survey design, general qualifications, and information on the reliability of the estimates are given in Appendix I. Definitions of terms are given in Appendix II]

CONDITION GROUP	BOTH SEXES	MALE	FEMALE	BOTH SEXES	MALE	FEMALE*
	DAYS LOST FROM SCHOOL IN THOUSANDS			DAYS LOST FROM SCHOOL PER 100 CHILDREN PER YEAR		
ALL ACUTE CONDITIONS-----	181,037	88,237	92,801	442.0	423.6	461.1
INFECTIVE AND PARASITIC DISEASES-----	65,831	31,607	34,223	160.7	151.7	170.0
RESPIRATORY CONDITIONS-----	87,399	41,856	45,543	213.4	200.9	226.3
UPPER RESPIRATORY CONDITIONS-----	51,143	24,239	26,904	124.9	116.4	133.7
INFLUENZA-----	31,625	15,602	16,023	77.2	74.9	79.6
OTHER RESPIRATORY CONDITIONS-----	4,630	2,014	2,616	11.3	9.7	13.0
DIGESTIVE SYSTEM CONDITIONS-----	4,990	2,027	2,963	12.2	9.7	14.7
INJURIES-----	9,364	6,595	2,769	22.9	31.7	13.8
ALL OTHER ACUTE CONDITIONS-----	13,454	6,151	7,302	32.8	29.5	36.3

TABLE 9. INCIDENCE OF ACUTE CONDITIONS AMONG CURRENTLY EMPLOYED PERSONS AND NUMBER OF ACUTE CONDITIONS PER 100 CURRENTLY EMPLOYED PERSONS PER YEAR, BY AGE, SEX, AND CONDITION GROUP: UNITED STATES, JULY 1963-JUNE 1964

[Data are based on household interviews of the civilian, noninstitutional population. The survey design, general qualifications, and information on the reliability of the estimates are given in Appendix I. Definitions of terms are given in Appendix II.]

SEX AND CONDITION GROUP	ALL AGES- 17 & OVER	17-44	45 & OVER	ALL AGES- 17 & OVER	17-44	45 & OVER
BOTH SEXES	INCIDENCE OF ACUTE CONDITIONS IN THOUSANDS			NUMBER OF ACUTE CONDITIONS PER 100 CURRENTLY EMPLOYED PERSONS PER YEAR		
ALL ACUTE CONDITIONS-----	109,082	71,433	37,648	155.6	171.7	132.
INFECTIVE AND PARASITIC DISEASES-----	8,660	5,786	2,874	12.3	13.9	10.
RESPIRATORY CONDITIONS-----	56,796	36,130	20,666	81.0	86.8	72.
UPPER RESPIRATORY CONDITIONS-----	34,551	21,288	13,263	49.3	51.2	46.
INFLUENZA-----	20,229	13,609	6,620	28.8	32.7	23.
OTHER RESPIRATORY CONDITIONS-----	2,015	1,232	783	2.9	3.0	2.
DIGESTIVE SYSTEM CONDITIONS-----	6,856	4,586	2,270	9.8	11.0	8.
INJURIES-----	22,363	14,863	7,500	31.9	35.7	26.
ALL OTHER ACUTE CONDITIONS-----	14,408	10,068	4,339	20.5	24.2	15.
MALE	INCIDENCE OF ACUTE CONDITIONS IN THOUSANDS			NUMBER OF ACUTE CONDITIONS PER 100 CURRENTLY EMPLOYED PERSONS PER YEAR		
ALL ACUTE CONDITIONS-----	67,364	43,877	23,487	147.3	161.3	126.
INFECTIVE AND PARASITIC DISEASES-----	4,646	3,165	1,480	10.2	11.6	8.
RESPIRATORY CONDITIONS-----	34,995	21,654	13,341	76.5	79.6	72.
UPPER RESPIRATORY CONDITIONS-----	21,225	12,926	8,299	46.4	47.5	44.
INFLUENZA-----	12,388	7,923	4,465	27.1	29.1	24.
OTHER RESPIRATORY CONDITIONS-----	1,382	805	"	3.0	3.0	"
DIGESTIVE SYSTEM CONDITIONS-----	4,284	2,712	1,572	9.4	10.0	8.
INJURIES-----	16,591	11,591	5,000	36.3	42.6	27.
ALL OTHER ACUTE CONDITIONS-----	6,848	4,754	2,094	15.0	17.5	11.
FEMALE	INCIDENCE OF ACUTE CONDITIONS IN THOUSANDS			NUMBER OF ACUTE CONDITIONS PER 100 CURRENTLY EMPLOYED PERSONS PER YEAR		
ALL ACUTE CONDITIONS-----	41,718	27,557	14,161	171.0	191.2	141.
INFECTIVE AND PARASITIC DISEASES-----	4,014	2,621	1,393	16.5	18.2	14.
RESPIRATORY CONDITIONS-----	21,800	14,476	7,324	89.4	100.4	73.
UPPER RESPIRATORY CONDITIONS-----	13,326	8,362	4,964	54.6	58.0	49.
INFLUENZA-----	7,842	5,687	2,155	32.1	39.5	21.
OTHER RESPIRATORY CONDITIONS-----	"	"	"	"	"	"
DIGESTIVE SYSTEM CONDITIONS-----	2,572	1,875	"	10.5	13.0	"
INJURIES-----	5,772	3,272	2,500	23.7	22.7	25.
ALL OTHER ACUTE CONDITIONS-----	7,560	5,314	2,246	31.0	36.9	22.

NOTE: Excluded from these statistics are all conditions involving neither restricted activity nor medical attention.

TABLE 10. DAYS LOST FROM WORK ASSOCIATED WITH ACUTE CONDITIONS AND DAYS LOST FROM WORK PER 100 CURRENTLY EMPLOYED PERSONS PER YEAR, BY AGE, SEX, AND CONDITION GROUP: UNITED STATES, JULY 1963-JUNE 1964

[Data are based on household interviews of the civilian, noninstitutional population. The survey design, general qualifications, and information on the reliability of the estimates are given in Appendix I. Definitions of terms are given in Appendix II]

SEX AND CONDITION GROUP	ALL AGES- 17 & OVER	17-44	45 & OVER	ALL AGES- 17 & OVER	17-44	45 & OVER
BOTH SEXES	DAYS LOST FROM WORK IN THOUSANDS			DAYS LOST FROM WORK PER 100 CURRENTLY EMPLOYED PERSONS PER YEAR		
ALL ACUTE CONDITIONS-----	228,179	125,333	102,846	325.4	301.2	360.8
INFECTIVE AND PARASITIC DISEASES-----	20,735	11,687	9,048	29.6	28.1	31.7
RESPIRATORY CONDITIONS-----	87,352	48,777	38,575	124.6	117.2	135.3
UPPER RESPIRATORY CONDITIONS-----	39,958	23,351	16,607	57.0	56.1	58.3
INFLUENZA-----	37,948	21,477	16,472	54.1	51.6	57.8
OTHER RESPIRATORY CONDITIONS-----	9,446	3,949	5,496	13.5	9.5	19.3
DIGESTIVE SYSTEM CONDITIONS-----	12,261	5,705	6,556	17.5	13.7	23.0
INJURIES-----	75,220	38,221	36,999	107.3	91.8	129.8
ALL OTHER ACUTE CONDITIONS-----	32,611	20,944	11,668	46.5	50.3	40.9
MALE						
ALL ACUTE CONDITIONS-----	147,743	75,484	72,259	323.1	277.5	390.0
INFECTIVE AND PARASITIC DISEASES-----	10,919	5,654	5,265	23.9	20.8	28.4
RESPIRATORY CONDITIONS-----	56,322	28,459	27,863	123.2	104.6	150.4
UPPER RESPIRATORY CONDITIONS-----	24,179	13,587	10,592	52.9	50.0	57.2
INFLUENZA-----	25,525	13,277	12,248	55.8	48.8	66.1
OTHER RESPIRATORY CONDITIONS-----	6,618	1,595	5,023	14.5	5.9	27.1
DIGESTIVE SYSTEM CONDITIONS-----	9,243	3,404	5,839	20.2	12.5	31.5
INJURIES-----	56,245	30,633	25,612	123.0	112.6	138.2
ALL OTHER ACUTE CONDITIONS-----	15,013	7,334	7,679	32.8	27.0	41.4
FEMALE						
ALL ACUTE CONDITIONS-----	80,436	49,849	30,587	329.8	345.9	306.5
INFECTIVE AND PARASITIC DISEASES-----	9,816	6,033	3,782	40.2	41.9	37.9
RESPIRATORY CONDITIONS-----	31,030	20,318	10,712	127.2	141.0	107.3
UPPER RESPIRATORY CONDITIONS-----	15,779	9,764	6,014	64.7	67.7	60.3
INFLUENZA-----	12,423	8,199	4,224	50.9	56.9	42.3
OTHER RESPIRATORY CONDITIONS-----	2,828	2,354	"	11.6	16.3	"
DIGESTIVE SYSTEM CONDITIONS-----	3,018	2,301	"	12.4	16.0	"
INJURIES-----	18,974	7,587	11,387	77.8	52.6	114.1
ALL OTHER ACUTE CONDITIONS-----	17,598	13,610	3,989	72.1	94.4	40.0

TABLE 11. INCIDENCE OF ACUTE CONDITIONS AND NUMBER OF ACUTE CONDITIONS PER 100 PERSONS PER YEAR, RESIDENCE, SEX, AND AGE: UNITED STATES, JULY 1963-JUNE 1964

[Data are based on household interviews of the civilian, noninstitutional population. The survey design, general qualifications, and information on reliability of the estimates are given in Appendix I. Definitions of terms are given in Appendix II]

SEX AND AGE	RESIDENCE							
	ALL AREAS	ALL SMSA	NON-SMSA NONFARM	NON-SMSA FARM	ALL AREAS	ALL SMSA	NON-SMSA NONFARM	NON-SMSA FARM
<u>BOTH SEXES</u>	INCIDENCE OF ACUTE CONDITIONS IN THOUSANDS				NUMBER OF ACUTE CONDITIONS PER 100 PERSONS PER YEAR			
ALL AGES-----	387,358	252,055	115,412	19,890	208.5	212.3	208.5	164
UNDER 5 YEARS-----	76,083	50,664	22,407	3,012	367.2	384.0	352.6	254
5-14 YEARS-----	103,653	68,700	29,827	5,126	271.6	287.7	258.0	188
15-24 YEARS-----	55,836	34,966	18,250	2,620	207.1	206.7	217.8	157
25-44 YEARS-----	79,701	53,187	23,184	3,331	175.8	175.1	184.1	140
45-64 YEARS-----	52,539	33,276	14,912	4,351	139.7	136.4	141.2	164
65 & OVER YEARS-----	19,545	11,264	6,831	1,450	114.8	113.0	115.9	121
<u>MALE</u>								
ALL AGES-----	180,182	116,350	54,021	9,812	200.0	203.2	202.0	161
UNDER 5 YEARS-----	38,847	25,382	11,764	1,701	367.9	376.0	367.9	271
5-14 YEARS-----	53,009	35,706	14,880	2,424	273.5	295.8	252.7	171
15-24 YEARS-----	24,433	15,830	7,482	1,121	190.7	196.9	192.8	121
25-44 YEARS-----	32,906	20,641	10,754	1,511	152.2	142.8	179.2	121
45-64 YEARS-----	23,225	14,718	6,293	2,215	127.9	126.1	123.1	161
65 & OVER YEARS-----	7,761	4,074	2,847	840	102.9	95.3	107.3	134
<u>FEMALE</u>								
ALL AGES-----	207,175	135,705	61,391	10,079	216.4	220.8	214.6	171
UNDER 5 YEARS-----	37,236	25,282	10,643	1,311	366.4	392.5	337.2	231
5-14 YEARS-----	50,644	32,994	14,947	2,703	269.7	279.5	263.5	201
15-24 YEARS-----	31,403	19,136	10,768	1,499	222.0	215.4	239.3	191
25-44 YEARS-----	46,795	32,546	12,430	1,820	197.4	204.5	188.5	151
45-64 YEARS-----	29,314	18,558	8,620	2,136	150.7	145.9	158.2	161
65 & OVER YEARS-----	11,783	7,190	3,984	*	124.3	126.2	123.0	

NOTE: Excluded from these statistics are all conditions involving neither restricted activity nor medical attention.

TABLE 12. DAYS OF RESTRICTED ACTIVITY ASSOCIATED WITH ACUTE CONDITIONS AND DAYS OF RESTRICTED ACTIVITY PER 100 PERSONS PER YEAR, BY RESIDENCE, SEX, AND AGE: UNITED STATES, JULY 1963-JUNE 1964

[Data are based on household interviews of the civilian, noninstitutional population. The survey design, general qualifications, and information on the reliability of the estimates are given in Appendix I. Definitions of terms are given in Appendix II]

SEX AND AGE	RESIDENCE							
	ALL AREAS	ALL SMSA	NON-SMSA NONFARM	NON-SMSA FARM	ALL AREAS	ALL SMSA	NON-SMSA NONFARM	NON-SMSA FARM
<u>BOTH SEXES</u>	DAYS OF RESTRICTED ACTIVITY IN THOUSANDS				DAYS OF RESTRICTED ACTIVITY PER 100 PERSONS PER YEAR			
ALL AGES-----	1,507,691	961,182	458,073	88,436	811.5	809.5	827.7	754.6
UNDER 5 YEARS-----	194,356	136,190	51,761	6,406	938.0	1,032.3	814.6	545.7
5-14 YEARS-----	344,445	229,622	96,912	17,911	902.6	961.7	838.2	658.5
15-24 YEARS-----	203,631	125,437	66,800	11,394	755.3	741.4	797.2	686.4
25-44 YEARS-----	315,090	213,881	88,751	12,458	695.1	704.2	704.6	526.8
45-64 YEARS-----	280,772	166,078	85,640	29,054	746.7	680.7	810.8	1,100.1
65 & OVER YEARS-----	169,397	89,974	68,210	11,213	995.2	902.4	1,157.5	967.5
<u>MALE</u>								
ALL AGES-----	659,107	417,121	196,958	45,028	731.7	728.4	736.6	741.2
UNDER 5 YEARS-----	99,158	68,276	26,975	3,907	939.2	1,011.3	843.5	641.5
5-14 YEARS-----	173,592	117,304	46,796	9,491	895.6	971.8	794.6	667.4
15-24 YEARS-----	79,816	48,793	25,900	5,123	622.8	607.0	667.4	571.8
25-44 YEARS-----	114,743	74,924	34,902	4,917	530.6	518.3	581.6	419.9
45-64 YEARS-----	133,331	78,327	39,038	15,966	734.5	670.8	763.4	1,172.2
65 & OVER YEARS-----	58,467	29,497	23,347	5,623	775.0	690.3	879.7	912.8
<u>FEMALE</u>								
ALL AGES-----	848,584	544,061	261,115	43,408	886.5	885.1	912.7	769.1
UNDER 5 YEARS-----	95,199	67,914	24,786	2,499	936.7	1,054.2	785.4	441.5
5-14 YEARS-----	170,853	112,318	50,116	8,419	909.9	951.4	883.4	648.1
15-24 YEARS-----	123,815	76,644	40,900	8,271	875.3	862.9	909.1	820.8
25-44 YEARS-----	200,346	138,957	53,849	7,541	845.1	873.0	816.5	631.6
45-64 YEARS-----	147,441	87,751	46,602	13,088	758.1	689.8	855.4	1,023.3
65 & OVER YEARS-----	110,930	60,478	44,862	5,590	1,170.3	1,061.8	1,385.1	1,029.5

TABLE 13. DAYS OF BED DISABILITY ASSOCIATED WITH ACUTE CONDITIONS AND DAYS OF BED DISABILITY PER PERSONS PER YEAR, BY RESIDENCE, SEX, AND AGE: UNITED STATES, JULY 1963-JUNE 1964

[Data are based on household interviews of the civilian, noninstitutional population. The survey design, general qualifications, and information on reliability of the estimates are given in Appendix I. Definitions of terms are given in Appendix II.]

SEX AND AGE	RESIDENCE							
	ALL AREAS	ALL SMSA	NON-SMSA NONFARM	NON-SMSA FARM	ALL AREAS	ALL SMSA	NON-SMSA NONFARM	NON-SMSA FARM
<u>BOTH SEXES</u>	DAYS OF BED DISABILITY IN THOUSANDS				DAYS OF BED DISABILITY PER 100 PERSONS PER YEAR			
ALL AGES-----	642,741	409,302	198,802	34,637	345.9	344.7	359.2	291
UNDER 5 YEARS-----	91,515	63,790	25,442	2,283	441.7	483.5	400.4	194
5-14 YEARS-----	147,137	94,267	43,603	9,266	385.6	394.8	377.1	346
15-24 YEARS-----	99,596	60,814	33,210	5,571	369.4	359.4	396.3	331
25-44 YEARS-----	137,074	90,966	41,030	5,077	302.4	299.5	325.7	214
45-64 YEARS-----	108,400	65,382	33,923	9,096	288.3	268.0	321.2	344
65 & OVER YEARS-----	59,020	34,082	21,594	3,344	346.7	341.8	366.4	284
<u>MALE</u>								
ALL AGES-----	272,897	172,063	84,403	16,431	303.0	300.5	315.7	271
UNDER 5 YEARS-----	47,043	31,522	13,991	1,530	445.6	466.9	437.5	251
5-14 YEARS-----	69,288	44,410	19,752	5,126	357.5	367.9	335.4	361
15-24 YEARS-----	34,102	19,854	11,758	2,490	266.1	247.0	303.0	271
25-44 YEARS-----	50,248	32,229	16,868	"	232.3	223.0	281.1	
45-64 YEARS-----	49,228	30,981	14,132	4,115	271.2	265.3	276.3	301
65 & OVER YEARS-----	22,988	13,067	7,902	2,019	304.7	305.8	297.7	321
<u>FEMALE</u>								
ALL AGES-----	369,844	237,238	114,399	18,206	386.4	386.0	399.9	321
UNDER 5 YEARS-----	44,472	32,268	11,451	"	437.6	500.9	362.8	
5-14 YEARS-----	77,849	49,857	23,852	4,141	414.6	422.3	420.4	311
15-24 YEARS-----	65,493	40,961	21,452	3,081	463.0	461.2	476.8	401
25-44 YEARS-----	86,826	58,737	24,162	3,926	366.3	369.0	366.4	321
45-64 YEARS-----	59,172	34,401	19,790	4,981	304.2	270.4	363.3	381
65 & OVER YEARS-----	36,032	21,015	13,692	"	380.1	368.9	422.7	

TABLE 14. INCIDENCE OF ACUTE CONDITIONS AND NUMBER OF ACUTE CONDITIONS PER 100 PERSONS PER YEAR, BY RESIDENCE, SEX, AND CONDITION GROUP: UNITED STATES, JULY 1963-JUNE 1964

[Data are based on household interviews of the civilian, noninstitutional population. The survey design, general qualifications, and information on the reliability of the estimates are given in Appendix I. Definitions of terms are given in Appendix II]

SEX AND CONDITION GROUP	RESIDENCE							
	ALL AREAS	ALL SMSA	NON-SMSA NONFARM	NON-SMSA FARM	ALL AREAS	ALL SMSA	NON-SMSA NONFARM	NON-SMSA FARM
BOTH SEXES	INCIDENCE OF ACUTE CONDITIONS IN THOUSANDS				NUMBER OF ACUTE CONDITIONS PER 100 PERSONS PER YEAR			
ALL ACUTE CONDITIONS-----	387,358	252,055	115,412	19,890	208.5	212.3	208.5	169.7
INFECTIVE AND PARASITIC DISEASES--	55,283	35,748	16,767	2,767	29.8	30.1	30.3	23.6
RESPIRATORY CONDITIONS-----	204,301	133,437	59,839	11,024	110.0	112.4	108.1	94.1
UPPER RESPIRATORY CONDITIONS----	133,797	90,128	36,685	6,984	72.0	75.9	66.3	59.6
INFLUENZA-----	61,980	37,951	20,338	3,691	33.4	32.0	36.7	31.5
OTHER RESPIRATORY CONDITIONS----	8,524	5,359	2,815	*	4.6	4.5	5.1	*
DIGESTIVE SYSTEM CONDITIONS----	20,608	12,209	7,438	961	11.1	10.3	13.4	8.2
INJURIES-----	55,226	37,292	15,246	2,688	29.7	31.4	27.5	22.9
FRACTURES, DISLOCATIONS, SPRAINS, AND STRAINS-----	16,366	10,946	4,753	*	8.8	9.2	8.6	*
OPEN WOUNDS AND LACERATIONS----	15,835	10,880	4,189	767	8.5	9.2	7.6	6.5
CONTUSIONS AND SUPERFICIAL INJURIES-----	10,421	7,069	2,637	716	5.6	6.0	4.8	6.1
OTHER CURRENT INJURIES-----	12,603	8,398	3,667	*	6.8	7.1	6.6	*
ALL OTHER ACUTE CONDITIONS----	51,941	33,369	16,121	2,450	28.0	28.1	29.1	20.9
MALE								
ALL ACUTE CONDITIONS-----	180,182	116,350	54,021	9,812	200.0	203.2	202.0	161.5
INFECTIVE AND PARASITIC DISEASES--	26,002	16,248	8,171	1,582	28.9	28.4	30.6	26.0
RESPIRATORY CONDITIONS-----	93,808	60,500	28,261	5,046	104.1	105.6	105.7	83.1
UPPER RESPIRATORY CONDITIONS----	62,119	41,664	17,303	3,152	69.0	72.8	64.7	51.9
INFLUENZA-----	27,830	16,360	9,655	1,815	30.9	28.6	36.1	29.9
OTHER RESPIRATORY CONDITIONS----	3,859	2,477	1,303	*	4.3	4.3	4.9	*
DIGESTIVE SYSTEM CONDITIONS----	9,961	6,108	3,320	*	11.1	10.7	12.4	*
INJURIES-----	32,895	21,865	9,377	1,653	36.5	38.2	35.1	27.2
FRACTURES, DISLOCATIONS, SPRAINS, AND STRAINS-----	9,899	6,357	3,072	*	11.0	11.1	11.5	*
OPEN WOUNDS AND LACERATIONS----	10,090	6,914	2,881	*	11.2	12.1	10.8	*
CONTUSIONS AND SUPERFICIAL INJURIES-----	5,999	4,086	1,360	*	6.7	7.1	5.1	*
OTHER CURRENT INJURIES-----	6,907	4,509	2,064	*	7.7	7.9	7.7	*
ALL OTHER ACUTE CONDITIONS----	17,517	11,629	4,891	997	19.4	20.3	18.3	16.4
FEMALE								
ALL ACUTE CONDITIONS-----	207,175	135,705	61,391	10,079	216.4	220.8	214.6	178.6
INFECTIVE AND PARASITIC DISEASES--	29,281	19,500	8,596	1,185	30.6	31.7	30.0	21.0
RESPIRATORY CONDITIONS-----	110,493	72,937	31,577	5,978	115.4	118.7	110.4	105.9
UPPER RESPIRATORY CONDITIONS----	71,678	48,464	19,382	3,832	74.9	78.8	67.7	67.9
INFLUENZA-----	34,150	21,590	10,683	1,876	35.7	35.1	37.3	33.2
OTHER RESPIRATORY CONDITIONS----	4,666	2,883	1,512	*	4.9	4.7	5.3	*
DIGESTIVE SYSTEM CONDITIONS----	10,647	6,101	4,118	*	11.1	9.9	14.4	*
INJURIES-----	22,331	15,427	5,869	1,035	23.3	25.1	20.5	18.3
FRACTURES, DISLOCATIONS, SPRAINS, AND STRAINS-----	6,467	4,589	1,681	*	6.8	7.5	5.9	*
OPEN WOUNDS AND LACERATIONS----	5,746	3,966	1,308	*	6.0	6.5	4.6	*
CONTUSIONS AND SUPERFICIAL INJURIES-----	4,422	2,983	1,277	*	4.6	4.9	4.5	*
OTHER CURRENT INJURIES-----	5,697	3,889	1,603	*	6.0	6.3	5.6	*
ALL OTHER ACUTE CONDITIONS----	34,423	21,740	11,231	1,452	36.0	35.4	39.3	25.7

NOTE: Excluded from these statistics are all conditions involving neither restricted activity nor medical attention.

TABLE 15. DAYS OF RESTRICTED ACTIVITY ASSOCIATED WITH ACUTE CONDITIONS AND DAYS OF RESTRICTED ACTIVITY PER 1 PERSONS PER YEAR, BY RESIDENCE, SEX, AND CONDITION GROUP: UNITED STATES, JULY 1963-JUNE 1964
 [Data are based on household interviews of the civilian, noninstitutional population. The survey design, general qualifications, and information on the reliability of estimates are given in Appendix I. Definition of terms are given in Appendix II.]

SEX AND CONDITION GROUP	RESIDENCE							
	ALL AREAS	ALL SMSA	NON-SMSA NONFARM	NON-SMSA FARM	ALL AREAS	ALL SMSA	NON-SMSA NONFARM	NON-SMSA FARM
<u>BOTH SEXES</u>	DAYS OF RESTRICTED ACTIVITY IN THOUSANDS				DAYS OF RESTRICTED ACTIVITY PER 100 PERSONS PER YEAR			
ALL ACUTE CONDITIONS-----	1,507,691	961,182	458,073	88,436	811.5	809.5	827.7	754
INFECTIVE AND PARASITIC DISEASES--	239,096	157,972	68,784	12,340	128.7	133.1	124.3	105
RESPIRATORY CONDITIONS-----	610,380	382,613	187,818	39,949	328.5	322.3	339.4	340
UPPER RESPIRATORY CONDITIONS----	330,654	211,992	97,664	20,997	178.0	178.5	176.5	175
INFLUENZA-----	211,509	125,043	72,809	13,656	113.8	105.3	131.6	116
OTHER RESPIRATORY CONDITIONS----	68,218	45,577	17,345	5,296	36.7	38.4	31.3	45
DIGESTIVE SYSTEM CONDITIONS----	69,488	41,454	24,869	3,165	37.4	34.9	44.9	27
INJURIES-----	330,590	218,938	96,351	15,301	177.9	184.4	174.1	130
FRACTURES, DISLOCATIONS, SPRAINS, AND STRAINS-----	173,279	114,139	53,079	6,061	93.3	96.1	95.9	51
OPEN WOUNDS AND LACERATIONS----	44,827	28,006	12,948	3,873	24.1	23.6	23.4	33
CONTUSIONS AND SUPERFICIAL INJURIES-----	49,825	30,944	16,238	2,643	26.8	26.1	29.3	22
OTHER CURRENT INJURIES-----	62,660	45,848	14,088	2,724	33.7	38.6	25.5	23
ALL OTHER ACUTE CONDITIONS----	258,137	160,206	80,250	17,681	138.9	134.9	145.0	150
<u>MALE</u>								
ALL ACUTE CONDITIONS-----	659,107	417,121	196,958	45,028	731.7	728.4	736.6	741
INFECTIVE AND PARASITIC DISEASES--	113,327	71,875	34,610	6,842	125.8	125.5	129.4	112
RESPIRATORY CONDITIONS-----	269,246	171,802	78,041	19,403	298.9	300.0	291.9	319
UPPER RESPIRATORY CONDITIONS----	144,541	95,137	39,701	9,703	160.5	166.1	148.5	155
INFLUENZA-----	93,231	53,597	31,419	8,214	103.5	93.6	117.5	135
OTHER RESPIRATORY CONDITIONS----	31,474	23,068	6,921	*	34.9	40.3	25.9	
DIGESTIVE SYSTEM CONDITIONS----	31,741	18,992	11,219	1,531	35.2	33.2	42.0	25
INJURIES-----	177,102	112,011	54,244	10,846	196.6	195.6	202.9	178
FRACTURES, DISLOCATIONS, SPRAINS, AND STRAINS-----	91,714	57,795	29,213	4,706	101.8	100.9	109.3	77
OPEN WOUNDS AND LACERATIONS----	25,957	15,499	7,902	2,556	28.8	27.1	29.6	42
CONTUSIONS AND SUPERFICIAL INJURIES-----	24,146	13,765	8,473	1,907	26.8	24.0	31.7	31
OTHER CURRENT INJURIES-----	35,286	24,953	8,656	1,677	39.2	43.6	32.4	27
ALL OTHER ACUTE CONDITIONS----	67,691	42,441	18,843	6,406	75.1	74.1	70.5	105
<u>FEMALE</u>								
ALL ACUTE CONDITIONS-----	848,584	544,061	261,115	43,408	886.5	885.1	912.7	765
INFECTIVE AND PARASITIC DISEASES--	125,770	86,097	34,174	5,498	131.4	140.1	119.4	97
RESPIRATORY CONDITIONS-----	341,133	210,810	109,777	20,546	356.4	343.0	383.7	364
UPPER RESPIRATORY CONDITIONS----	186,112	116,855	57,964	11,294	194.4	190.1	202.6	200
INFLUENZA-----	118,278	71,446	41,390	5,442	123.6	116.2	144.7	96
OTHER RESPIRATORY CONDITIONS----	36,743	22,509	10,424	3,810	38.4	36.6	36.4	67
DIGESTIVE SYSTEM CONDITIONS----	37,746	22,462	13,650	1,634	39.4	36.5	47.7	25
INJURIES-----	153,488	106,926	42,107	4,455	160.4	174.0	147.2	78
FRACTURES, DISLOCATIONS, SPRAINS, AND STRAINS-----	81,565	56,344	23,866	*	85.2	91.7	83.4	
OPEN WOUNDS AND LACERATIONS----	18,870	12,507	5,045	*	19.7	20.3	17.6	
CONTUSIONS AND SUPERFICIAL INJURIES-----	25,679	17,179	7,765	*	26.8	27.9	27.1	
OTHER CURRENT INJURIES-----	27,374	20,896	5,431	*	28.6	34.0	19.0	
ALL OTHER ACUTE CONDITIONS----	190,446	117,764	61,407	11,275	199.0	191.6	214.6	195

TABLE 16. DAYS OF BED DISABILITY ASSOCIATED WITH ACUTE CONDITIONS AND DAYS OF BED DISABILITY PER 100 PERSONS PER YEAR, BY RESIDENCE, SEX, AND CONDITION GROUP: UNITED STATES, JULY 1963-JUNE 1964

[Data are based on household interviews of the civilian, noninstitutional population. The survey design, general qualifications, and information on the reliability of the estimates are given in Appendix I. Definitions of terms are given in Appendix II]

SEX AND CONDITION GROUP	RESIDENCE							
	ALL AREAS	ALL SMSA	NON-SMSA NONFARM	NON-SMSA FARM	ALL AREAS	ALL SMSA	NON-SMSA NONFARM	NON-SMSA FARM
BOTH SEXES	DAYS OF BED DISABILITY IN THOUSANDS				DAYS OF BED DISABILITY PER 100 PERSONS PER YEAR			
ALL ACUTE CONDITIONS-----	642,741	409,302	198,802	34,637	345.9	344.7	359.2	295.5
INFECTIVE AND PARASITIC DISEASES--	111,138	69,845	35,154	6,140	59.8	58.8	63.5	52.4
RESPIRATORY CONDITIONS-----	291,924	190,204	84,099	17,621	157.1	160.2	152.0	150.3
UPPER RESPIRATORY CONDITIONS----	131,103	89,586	34,416	7,102	70.6	75.5	62.2	60.6
INFLUENZA-----	117,642	71,246	38,418	7,978	63.3	60.0	69.4	68.1
OTHER RESPIRATORY CONDITIONS----	43,179	29,373	11,265	2,542	23.2	24.7	20.4	21.7
DIGESTIVE SYSTEM CONDITIONS-----	36,387	22,626	12,072	1,690	19.6	19.1	21.8	14.4
INJURIES-----	96,493	60,577	33,198	2,718	51.9	51.0	60.0	23.2
FRACTURES, DISLOCATIONS, SPRAINS, AND STRAINS-----	48,138	29,733	17,277	::	25.9	25.0	31.2	::
OPEN WOUNDS AND LACERATIONS----	12,653	6,533	5,572	::	6.8	5.5	10.1	::
CONTUSIONS AND SUPERFICIAL INJURIES-----	13,375	8,080	4,674	::	7.2	6.8	8.4	::
OTHER CURRENT INJURIES-----	22,327	16,231	5,676	::	12.0	13.7	10.3	::
ALL OTHER ACUTE CONDITIONS-----	106,798	66,050	34,279	6,469	57.5	55.6	61.9	55.2
MALE	DAYS OF BED DISABILITY IN THOUSANDS				DAYS OF BED DISABILITY PER 100 PERSONS PER YEAR			
ALL ACUTE CONDITIONS-----	272,897	172,063	84,403	16,431	303.0	300.5	315.7	270.5
INFECTIVE AND PARASITIC DISEASES--	51,041	30,692	16,648	3,701	56.7	53.6	62.3	60.9
RESPIRATORY CONDITIONS-----	131,944	86,767	37,348	7,830	146.5	151.5	139.7	128.9
UPPER RESPIRATORY CONDITIONS----	60,760	41,271	16,972	2,517	67.5	72.1	63.5	41.4
INFLUENZA-----	50,896	30,580	15,872	4,445	56.5	53.4	59.4	73.2
OTHER RESPIRATORY CONDITIONS----	20,288	14,915	4,505	::	22.5	26.0	16.8	::
DIGESTIVE SYSTEM CONDITIONS-----	15,007	9,840	4,352	::	16.7	17.2	16.3	::
INJURIES-----	50,812	30,063	18,734	2,014	56.4	52.5	70.1	33.2
FRACTURES, DISLOCATIONS, SPRAINS, AND STRAINS-----	25,442	14,840	9,632	::	28.2	25.9	36.0	::
OPEN WOUNDS AND LACERATIONS----	6,669	3,310	3,230	::	7.4	5.8	12.1	::
CONTUSIONS AND SUPERFICIAL INJURIES-----	6,893	4,164	2,108	::	7.7	7.3	7.9	::
OTHER CURRENT INJURIES-----	11,807	7,749	3,763	::	13.1	13.5	14.1	::
ALL OTHER ACUTE CONDITIONS-----	24,094	14,701	7,322	2,071	26.7	25.7	27.4	34.1
FEMALE	DAYS OF BED DISABILITY IN THOUSANDS				DAYS OF BED DISABILITY PER 100 PERSONS PER YEAR			
ALL ACUTE CONDITIONS-----	369,844	237,238	114,399	18,206	386.4	386.0	399.9	322.6
INFECTIVE AND PARASITIC DISEASES--	60,098	39,153	18,506	2,439	62.8	63.7	64.7	43.2
RESPIRATORY CONDITIONS-----	159,980	103,437	46,751	9,791	167.1	168.3	163.4	173.5
UPPER RESPIRATORY CONDITIONS----	70,343	48,314	17,444	4,585	73.5	78.6	61.0	81.2
INFLUENZA-----	66,745	40,666	22,546	3,533	69.7	66.2	78.8	62.6
OTHER RESPIRATORY CONDITIONS----	22,851	14,457	6,761	1,674	23.9	23.5	23.6	29.7
DIGESTIVE SYSTEM CONDITIONS-----	21,381	12,785	7,720	::	22.3	20.8	27.0	::
INJURIES-----	45,681	30,514	14,464	::	47.7	49.6	50.6	::
FRACTURES, DISLOCATIONS, SPRAINS, AND STRAINS-----	22,697	14,894	7,644	::	23.7	24.2	26.7	::
OPEN WOUNDS AND LACERATIONS----	5,983	3,223	2,341	::	6.3	5.2	8.2	::
CONTUSIONS AND SUPERFICIAL INJURIES-----	6,482	3,916	2,566	::	6.8	6.4	9.0	::
OTHER CURRENT INJURIES-----	10,519	8,482	1,913	::	11.0	13.8	6.7	::
ALL OTHER ACUTE CONDITIONS-----	82,704	51,348	26,958	4,398	86.4	83.5	94.2	77.9

TABLE 17. INCIDENCE OF ACUTE CONDITIONS AND NUMBER OF ACUTE CONDITIONS PER 100 PERSONS PER YEAR, BY REGION, SEX AND AGE: UNITED STATES, JULY 1963-JUNE 1964

[Data are based on household interviews of the civilian, noninstitutional population. The survey design, general qualifications, and information on the reliability of the estimates are given in Appendix I. Definitions of terms are given in Appendix II]

SEX AND AGE	REGION									
	ALL REGIONS	NORTH-EAST	NORTH CENTRAL	SOUTH	WEST	ALL REGIONS	NORTH-EAST	NORTH CENTRAL	SOUTH	WEST
<u>BOTH SEXES</u>	INCIDENCE OF ACUTE CONDITIONS IN THOUSANDS					NUMBER OF ACUTE CONDITIONS PER 100 PERSONS PER YEAR				
ALL AGES-----	387,358	89,328	110,505	112,842	74,682	208.5	192.2	208.9	198.7	252
UNDER 5 YEARS-----	76,083	18,804	21,160	23,335	12,784	367.2	386.2	354.8	360.8	373
5-14 YEARS-----	103,653	26,089	29,184	27,042	21,338	271.6	293.6	263.3	227.1	339
15-24 YEARS-----	55,836	10,463	16,136	18,312	10,924	207.1	161.8	219.9	203.1	263
25-44 YEARS-----	79,701	17,447	22,630	22,177	17,447	175.8	150.1	178.3	164.1	232
45-64 YEARS-----	52,539	12,543	14,948	16,018	9,031	139.7	124.0	140.1	144.5	157
65 & OVER YEARS-----	19,545	3,983	6,448	5,957	3,157	114.8	88.2	125.2	123.8	124
<u>MALE</u>										
ALL AGES-----	180,182	40,682	51,967	52,508	35,025	200.0	182.4	199.7	192.4	242
UNDER 5 YEARS-----	38,847	9,172	10,298	12,467	6,911	367.9	379.5	330.4	379.6	397
5-14 YEARS-----	53,009	13,118	15,384	13,490	11,018	273.5	295.6	272.9	222.6	339
15-24 YEARS-----	24,433	4,761	7,169	8,160	4,343	190.7	155.2	200.7	192.4	224
25-44 YEARS-----	32,906	6,639	10,051	8,773	7,443	152.2	119.0	162.0	139.2	210
45-64 YEARS-----	23,225	5,334	6,645	7,291	3,954	127.9	109.3	128.0	139.5	138
65 & OVER YEARS-----	7,761	1,657	2,420	2,327	1,357	102.9	86.4	104.9	107.3	117
<u>FEMALE</u>										
ALL AGES-----	207,175	48,646	58,538	60,335	39,656	216.4	201.2	217.9	204.4	261
UNDER 5 YEARS-----	37,236	9,633	10,862	10,869	5,873	366.4	393.0	381.5	341.5	349
5-14 YEARS-----	50,644	12,970	13,800	13,553	10,321	269.7	291.7	253.3	231.8	340
15-24 YEARS-----	31,403	5,702	8,967	10,152	6,582	222.0	167.9	238.1	212.6	298
25-44 YEARS-----	46,795	10,807	12,579	13,404	10,005	197.4	178.8	194.0	185.7	252
45-64 YEARS-----	29,314	7,209	8,302	8,726	5,077	150.7	137.7	151.6	149.0	176
65 & OVER YEARS-----	11,783	2,326	4,027	3,631	1,800	124.3	89.6	141.4	137.4	129

NOTE: Excluded from these statistics are all conditions involving neither restricted activity nor medical attention.

TABLE 18. DAYS OF RESTRICTED ACTIVITY ASSOCIATED WITH ACUTE CONDITIONS AND DAYS OF RESTRICTED ACTIVITY PER 100 PERSONS PER YEAR, BY REGION, SEX, AND AGE: UNITED STATES, JULY 1963-JUNE 1964
 [Data are based on household interviews of the civilian, noninstitutional population. The survey design, general qualifications, and information on the reliability of the estimates are given in Appendix I. Definitions of terms are given in Appendix II]

SEX AND AGE	REGION									
	ALL REGIONS	NORTH-EAST	NORTH CENTRAL	SOUTH	WEST	ALL REGIONS	NORTH-EAST	NORTH CENTRAL	SOUTH	WEST
BOTH SEXES	DAYS OF RESTRICTED ACTIVITY IN THOUSANDS					DAYS OF RESTRICTED ACTIVITY PER 100 PERSONS PER YEAR				
ALL AGES-----	1,507,691	349,156	413,272	455,018	290,246	811.5	751.3	781.3	801.0	979.9
UNDER 5 YEARS-----	194,356	56,687	49,751	55,936	31,982	938.0	1,164.2	834.2	864.9	934.9
5-14 YEARS-----	344,445	88,242	98,475	85,634	72,093	902.6	993.2	888.4	719.1	1,147.8
15-24 YEARS-----	203,631	39,010	52,585	73,339	38,696	755.3	603.4	716.7	813.4	934.5
25-44 YEARS-----	315,090	72,913	88,519	91,707	61,951	695.1	627.2	697.5	678.4	826.0
45-64 YEARS-----	280,772	59,906	71,146	96,747	52,973	746.7	592.1	666.8	872.9	924.5
65 & OVER YEARS-----	169,397	32,397	52,795	51,654	32,551	995.2	717.7	1,024.7	1,073.7	1,279.0
MALE										
ALL AGES-----	659,107	150,921	173,881	205,298	129,007	731.7	676.7	668.0	752.4	892.1
UNDER 5 YEARS-----	99,158	28,388	24,721	29,222	16,827	939.2	1,174.5	793.1	889.8	967.6
5-14 YEARS-----	173,592	46,733	47,369	43,245	36,245	895.6	1,053.0	840.3	713.5	1,116.9
15-24 YEARS-----	79,816	14,045	21,584	27,461	16,725	622.8	457.8	604.3	647.5	864.8
25-44 YEARS-----	114,743	22,669	31,983	33,458	26,634	530.6	406.2	515.4	531.0	752.4
45-64 YEARS-----	133,331	30,220	33,049	46,487	23,576	734.5	619.0	636.5	889.2	826.9
65 & OVER YEARS-----	58,467	8,866	15,175	25,426	9,000	775.0	462.5	658.1	1,172.2	781.3
FEMALE										
ALL AGES-----	848,584	198,235	239,391	249,720	161,240	886.5	820.1	891.0	845.9	1,063.7
UNDER 5 YEARS-----	95,199	28,299	25,030	26,715	15,155	936.7	1,154.6	879.2	839.3	901.0
5-14 YEARS-----	170,853	41,509	51,106	42,390	35,848	909.9	933.6	938.1	724.9	1,180.8
15-24 YEARS-----	123,815	24,965	31,001	45,878	21,971	875.3	734.9	823.2	960.8	995.5
25-44 YEARS-----	200,346	50,244	56,536	58,249	35,317	845.1	831.2	871.9	807.1	891.6
45-64 YEARS-----	147,441	29,686	38,097	50,260	29,397	758.1	567.0	695.5	858.4	1,021.1
65 & OVER YEARS-----	110,930	23,531	37,620	26,228	23,551	1,170.3	906.1	1,321.4	992.7	1,690.7

TABLE 19. DAYS OF BED DISABILITY ASSOCIATED WITH ACUTE CONDITIONS AND DAYS OF BED DISABILITY PER 100 PERSONS PER YEAR, BY REGION, SEX, AND AGE: UNITED STATES, JULY 1963-JUNE 1964

[Data are based on household interviews of the civilian, noninstitutional population. The survey design, general qualifications, and information on the reliability of the estimates are given in Appendix I. Definitions of terms are given in Appendix II]

SEX AND AGE	REGION									
	ALL REGIONS	NORTH-EAST	NORTH CENTRAL	SOUTH	WEST	ALL REGIONS	NORTH-EAST	NORTH CENTRAL	SOUTH	WEST
<u>BOTH SEXES</u>	DAYS OF BED DISABILITY IN THOUSANDS					DAYS OF BED DISABILITY PER 100 PERSONS PER YEAR				
ALL AGES-----	642,741	136,430	176,489	200,096	129,726	345.9	293.5	333.6	352.3	438.
UNDER 5 YEARS-----	91,515	26,499	23,239	27,513	14,264	441.7	544.2	389.7	425.4	417.
5-14 YEARS-----	147,137	34,280	43,955	36,305	32,596	385.6	385.8	396.5	304.9	519.
15-24 YEARS-----	99,596	17,382	23,609	40,184	18,421	369.4	268.9	321.8	445.7	444.
25-44 YEARS-----	137,074	27,095	40,319	41,657	28,003	302.4	233.1	317.7	308.2	373.
45-64 YEARS-----	108,400	21,739	28,843	36,687	21,132	288.3	214.9	270.3	331.0	368.
65 & OVER YEARS-----	59,020	9,435	16,523	17,751	15,311	346.7	209.0	320.7	369.0	601.
<u>MALE</u>										
ALL AGES-----	272,897	56,178	69,508	89,780	57,431	303.0	251.9	267.0	329.1	397.
UNDER 5 YEARS-----	47,043	12,342	11,408	15,256	8,037	445.6	510.6	366.0	464.6	462.
5-14 YEARS-----	69,288	17,309	19,500	17,578	14,900	357.5	390.0	345.9	290.0	459.
15-24 YEARS-----	34,102	5,148	7,968	13,541	7,445	266.1	167.8	223.1	319.3	385.
25-44 YEARS-----	50,248	6,858	13,399	17,321	12,670	232.3	122.9	215.9	274.9	357.
45-64 YEARS-----	49,228	11,381	11,670	16,943	9,234	271.2	233.1	224.8	324.1	323.
65 & OVER YEARS-----	22,988	3,139	5,563	9,142	5,145	304.7	163.7	241.2	421.5	446.
<u>FEMALE</u>										
ALL AGES-----	369,844	80,252	106,980	110,316	72,295	386.4	332.0	398.2	373.7	476.
UNDER 5 YEARS-----	44,472	14,157	11,831	12,257	6,227	437.6	577.6	415.6	385.1	370.
5-14 YEARS-----	77,849	16,971	24,455	18,727	17,696	414.6	381.7	448.9	320.2	582.
15-24 YEARS-----	65,493	12,234	15,641	26,642	10,976	463.0	360.1	415.3	557.9	497.
25-44 YEARS-----	86,826	20,236	26,919	24,337	15,333	366.3	334.8	415.2	337.2	387.
45-64 YEARS-----	59,172	10,357	17,173	19,744	11,897	304.2	197.8	313.5	337.2	413.
65 & OVER YEARS-----	36,032	6,296	10,961	8,609	10,166	380.1	242.4	385.0	325.9	729.

TABLE 20. INCIDENCE OF ACUTE CONDITIONS AND NUMBER OF ACUTE CONDITIONS PER 100 PERSONS PER YEAR, BY REGION, SEX, AND CONDITION GROUP: UNITED STATES, JULY 1963-JUNE 1964

[Data are based on household interviews of the civilian, noninstitutional population. The survey design, general qualifications, and information on the reliability of the estimates are given in Appendix I. Definitions of terms are given in Appendix II]

SEX AND CONDITION GROUP	REGION									
	ALL REGIONS	NORTH-EAST	NORTH CENTRAL	SOUTH	WEST	ALL REGIONS	NORTH-EAST	NORTH CENTRAL	SOUTH	WEST
BOTH SEXES	INCIDENCE OF ACUTE CONDITIONS IN THOUSANDS					NUMBER OF ACUTE CONDITIONS PER 100 PERSONS PER YEAR				
ALL ACUTE CONDITIONS-----	387,358	89,328	110,505	112,842	74,682	208.5	192.2	208.9	198.7	252.1
INFECTIVE AND PARASITIC DISEASES-----	55,283	18,014	11,566	19,977	5,726	29.8	38.8	21.9	35.2	19.3
RESPIRATORY CONDITIONS-----	204,301	41,868	63,210	54,109	45,114	110.0	90.1	119.5	95.3	152.3
UPPER RESPIRATORY CONDITIONS-----	133,797	34,612	36,711	39,984	22,491	72.0	74.5	69.4	70.4	75.9
INFLUENZA-----	61,980	5,141	24,549	11,313	20,976	33.4	11.1	46.4	19.9	70.8
OTHER RESPIRATORY CONDITIONS-----	8,524	2,116	1,949	2,812	1,647	4.6	4.6	3.7	5.0	5.6
DIGESTIVE SYSTEM CONDITIONS-----	20,608	4,851	5,461	6,701	3,595	11.1	10.4	10.3	11.8	12.1
INJURIES-----	55,226	13,066	15,460	16,094	10,607	29.7	28.1	29.2	28.3	35.8
FRACTURES, DISLOCATIONS, SPRAINS, AND STRAINS-----	16,366	3,634	4,688	4,436	3,609	8.8	7.8	8.9	7.8	12.2
OPEN WOUNDS AND LACERATIONS-----	15,835	4,248	4,384	4,832	2,371	8.5	9.1	8.3	8.5	8.0
CONTUSIONS AND SUPERFICIAL INJURIES-----	10,421	1,680	3,102	3,381	2,258	5.6	3.6	5.9	6.0	7.6
OTHER CURRENT INJURIES-----	12,603	3,504	3,286	3,445	2,369	6.8	7.5	6.2	6.1	8.0
ALL OTHER ACUTE CONDITIONS-----	51,941	11,530	14,809	15,962	9,639	28.0	24.8	28.0	28.1	32.5
MALE										
ALL ACUTE CONDITIONS-----	180,182	40,682	51,967	52,508	35,025	200.0	182.4	199.7	192.4	242.2
INFECTIVE AND PARASITIC DISEASES-----	26,002	8,335	5,267	9,491	2,908	28.9	37.4	20.2	34.8	20.1
RESPIRATORY CONDITIONS-----	93,808	18,638	29,622	24,709	20,839	104.1	83.6	113.8	90.6	144.1
UPPER RESPIRATORY CONDITIONS-----	62,119	15,490	17,466	18,587	10,575	69.0	69.5	67.1	68.1	73.1
INFLUENZA-----	27,830	2,314	11,346	4,828	9,343	30.9	10.4	43.6	17.7	64.6
OTHER RESPIRATORY CONDITIONS-----	3,859	834	810	1,294	921	4.3	3.7	3.1	4.7	6.4
DIGESTIVE SYSTEM CONDITIONS-----	9,961	2,243	3,017	3,161	1,539	11.1	10.1	11.6	11.6	10.6
INJURIES-----	32,895	7,246	8,843	10,281	6,525	36.5	32.5	34.0	37.7	45.1
FRACTURES, DISLOCATIONS, SPRAINS, AND STRAINS-----	9,899	2,046	2,675	2,937	2,241	11.0	9.2	10.3	10.8	15.5
OPEN WOUNDS AND LACERATIONS-----	10,090	2,419	2,834	3,211	1,626	11.2	10.8	10.9	11.8	11.2
CONTUSIONS AND SUPERFICIAL INJURIES-----	5,999	973	1,594	2,108	1,324	6.7	4.4	6.1	7.7	9.2
OTHER CURRENT INJURIES-----	6,907	1,808	1,740	2,024	1,334	7.7	8.1	6.7	7.4	9.2
ALL OTHER ACUTE CONDITIONS-----	17,517	4,220	5,217	4,866	3,215	19.4	18.9	20.0	17.8	22.2
FEMALE										
ALL ACUTE CONDITIONS-----	207,175	48,646	58,538	60,335	39,656	216.4	201.2	217.9	204.4	261.6
INFECTIVE AND PARASITIC DISEASES-----	29,281	9,679	6,298	10,486	2,818	30.6	40.0	23.4	35.5	18.6
RESPIRATORY CONDITIONS-----	110,493	23,230	33,587	29,400	24,275	115.4	96.1	125.0	99.6	160.1
UPPER RESPIRATORY CONDITIONS-----	71,678	19,122	19,244	21,396	11,915	74.9	79.1	71.6	72.5	78.6
INFLUENZA-----	34,150	2,827	13,203	6,486	11,634	35.7	11.7	49.1	22.0	76.8
OTHER RESPIRATORY CONDITIONS-----	4,666	1,281	1,140	1,518	726	4.9	5.3	4.2	5.1	4.8
DIGESTIVE SYSTEM CONDITIONS-----	10,647	2,607	2,444	3,539	2,057	11.1	10.8	9.1	12.0	13.6
INJURIES-----	22,331	5,820	6,617	5,814	4,082	23.3	24.1	24.6	19.7	26.9
FRACTURES, DISLOCATIONS, SPRAINS, AND STRAINS-----	6,467	1,588	2,012	1,498	1,368	6.8	6.6	7.5	5.1	9.0
OPEN WOUNDS AND LACERATIONS-----	5,746	1,829	1,550	1,621	745	6.0	7.6	5.8	5.5	4.9
CONTUSIONS AND SUPERFICIAL INJURIES-----	4,422	707	1,508	1,273	934	4.6	2.9	5.6	4.3	6.2
OTHER CURRENT INJURIES-----	5,697	1,696	1,546	1,421	1,034	6.0	7.0	5.8	4.8	6.8
ALL OTHER ACUTE CONDITIONS-----	34,423	7,310	9,592	11,096	6,425	36.0	30.2	35.7	37.6	42.4

NOTE: Excluded from these statistics are all conditions involving neither restricted activity nor medical attention.

TABLE 21. DAYS OF RESTRICTED ACTIVITY ASSOCIATED WITH ACUTE CONDITIONS AND DAYS OF RESTRICTED ACTIVITY PER 100 PERSONS PER YEAR, BY REGION, SEX, AND CONDITION GROUP: UNITED STATES, JULY 1963-JUNE 1964

[Data are based on household interviews of the civilian, noninstitutional population. The survey design, general qualifications, and information on the reliability of the estimates are given in Appendix I. Definitions of terms are given in Appendix II]

SEX AND CONDITION GROUP	REGION									
	ALL REGIONS	NORTH-EAST	NORTH CENTRAL	SOUTH	WEST	ALL REGIONS	NORTH-EAST	NORTH CENTRAL	SOUTH	WEST
BOTH SEXES	DAYS OF RESTRICTED ACTIVITY IN THOUSANDS					DAYS OF RESTRICTED ACTIVITY PER 100 PERSONS PER YEAR				
ALL ACUTE CONDITIONS-----	1,507,691	349,156	413,272	455,018	290,246	811.5	751.3	-781.3	801.0	979.6
INFECTIVE AND PARASITIC DISEASES-----	239,096	73,236	61,987	71,271	32,602	128.7	157.6	117.2	125.5	110.1
RESPIRATORY CONDITIONS-----	610,380	122,085	177,072	171,012	140,210	328.5	262.7	334.7	301.1	473.4
UPPER RESPIRATORY CONDITIONS-----	330,654	83,912	90,649	101,992	54,101	178.0	180.5	171.4	179.6	182.7
INFLUENZA-----	211,509	16,810	70,592	50,002	74,105	113.8	36.2	133.4	88.0	250.2
OTHER RESPIRATORY CONDITIONS-----	68,218	21,363	15,830	19,018	12,005	36.7	46.0	29.9	33.5	40.5
DIGESTIVE SYSTEM CONDITIONS-----	69,488	16,755	17,387	24,673	10,674	37.4	36.1	32.9	43.4	36.0
INJURIES-----	330,590	81,605	85,997	95,810	67,178	177.9	175.6	162.6	168.7	226.6
FRACTURES, DISLOCATIONS, STRAINS, AND STRAINS-----	173,279	36,158	48,417	48,527	40,177	93.3	77.8	91.5	85.4	135.6
OPEN WOUNDS AND LACERATIONS-----	44,827	10,484	13,311	14,995	6,036	24.1	22.6	25.2	26.4	20.4
CONTUSIONS AND SUPERFICIAL INJURIES-----	49,825	13,468	11,184	17,639	7,534	26.8	29.0	21.1	31.1	25.4
OTHER CURRENT INJURIES-----	62,660	21,496	13,085	14,649	13,431	33.7	46.3	24.7	25.8	45.3
ALL OTHER ACUTE CONDITIONS-----	258,137	55,474	70,829	92,251	39,582	138.9	119.4	133.9	162.4	133.6
MALE										
ALL ACUTE CONDITIONS-----	659,107	150,921	173,881	205,298	129,007	731.7	676.7	668.9	752.4	892.1
INFECTIVE AND PARASITIC DISEASES-----	113,327	32,897	25,626	36,786	18,017	125.8	147.5	98.5	134.8	124.6
RESPIRATORY CONDITIONS-----	269,246	52,705	77,255	74,565	64,722	298.9	236.3	296.3	273.3	447.6
UPPER RESPIRATORY CONDITIONS-----	144,541	36,883	40,693	41,739	25,227	160.5	165.4	156.3	153.0	174.4
INFLUENZA-----	93,231	7,346	30,557	21,673	33,655	103.5	32.9	117.4	79.4	232.7
OTHER RESPIRATORY CONDITIONS-----	31,474	8,476	6,005	11,153	5,841	34.9	38.0	23.1	40.9	40.4
DIGESTIVE SYSTEM CONDITIONS-----	31,741	6,015	7,235	12,952	5,540	35.2	27.0	27.3	47.5	38.3
INJURIES-----	177,102	43,506	44,721	55,768	33,107	196.6	195.1	171.3	204.4	228.6
FRACTURES, DISLOCATIONS, STRAINS, AND STRAINS-----	91,714	18,076	24,243	27,784	21,611	101.8	81.0	93.1	101.8	149.4
OPEN WOUNDS AND LACERATIONS-----	25,957	4,809	9,646	9,008	2,494	28.8	21.6	37.1	33.0	17.2
CONTUSIONS AND SUPERFICIAL INJURIES-----	24,146	7,657	4,207	9,482	2,799	26.8	34.3	16.2	34.8	19.4
OTHER CURRENT INJURIES-----	35,286	12,963	6,626	9,493	6,203	39.2	58.1	25.5	34.8	42.5
ALL OTHER ACUTE CONDITIONS-----	67,691	15,799	19,044	25,227	7,621	75.1	70.8	73.2	92.5	52.7
FEMALE										
ALL ACUTE CONDITIONS-----	848,584	198,235	239,391	249,720	161,240	886.5	820.1	891.0	845.9	1,063.7
INFECTIVE AND PARASITIC DISEASES-----	125,770	40,339	36,360	34,485	14,585	131.4	166.9	135.3	116.8	96.2
RESPIRATORY CONDITIONS-----	341,133	69,381	99,817	96,447	75,488	356.4	287.0	371.5	326.7	498.0
UPPER RESPIRATORY CONDITIONS-----	186,112	47,029	49,957	60,253	28,874	194.4	194.6	185.9	204.1	190.5
INFLUENZA-----	118,278	9,464	40,035	28,329	40,450	123.6	39.2	149.0	96.0	266.9
OTHER RESPIRATORY CONDITIONS-----	36,743	12,888	9,825	7,866	6,165	38.4	53.3	36.6	26.6	40.7
DIGESTIVE SYSTEM CONDITIONS-----	37,746	10,740	10,152	11,721	5,134	39.4	44.4	37.8	39.7	33.9
INJURIES-----	153,488	38,099	41,276	40,042	34,072	160.4	157.6	153.6	135.6	224.8
FRACTURES, DISLOCATIONS, STRAINS, AND STRAINS-----	81,565	18,082	24,174	20,743	18,567	85.2	74.8	90.0	70.3	122.5
OPEN WOUNDS AND LACERATIONS-----	18,870	5,675	3,665	5,987	3,542	19.7	23.5	13.6	20.3	23.4
CONTUSIONS AND SUPERFICIAL INJURIES-----	25,679	5,810	6,978	8,156	4,735	26.8	24.0	26.0	27.6	31.2
OTHER CURRENT INJURIES-----	27,374	8,533	6,459	5,155	7,227	28.6	35.3	24.0	17.5	47.7
ALL OTHER ACUTE CONDITIONS-----	190,446	39,675	51,785	67,025	31,962	199.0	164.1	192.7	227.0	210.9

TABLE 22. DAYS OF BED DISABILITY ASSOCIATED WITH ACUTE CONDITIONS AND DAYS OF BED DISABILITY PER 100 PERSONS PER YEAR, BY REGION, SEX, AND CONDITION GROUP: UNITED STATES, JULY 1963-JUNE 1964

Data are based on household interviews of the civilian, noninstitutional population. The survey design, general qualifications, and information on the reliability of the estimates are given in Appendix I. Definitions of terms are given in Appendix II

SEX AND CONDITION GROUP	REGION									
	ALL REGIONS	NORTH-EAST	NORTH CENTRAL	SOUTH	WEST	ALL REGIONS	NORTH-EAST	NORTH CENTRAL	SOUTH	WEST
BOTH SEXES	DAYS OF BED DISABILITY IN THOUSANDS					DAYS OF BED DISABILITY PER 100 PERSONS PER YEAR				
ALL ACUTE CONDITIONS-----	642,741	136,430	176,489	200,096	129,726	345.9	293.5	333.6	352.3	438.0
INFECTIVE AND PARASITIC DISEASES-----	111,138	31,318	29,178	35,374	15,268	59.8	67.4	55.2	62.3	51.5
RESPIRATORY CONDITIONS-----	291,924	54,967	83,326	79,305	74,327	157.1	118.3	157.5	139.6	250.9
UPPER RESPIRATORY CONDITIONS-----	131,103	33,287	35,240	39,090	23,486	70.6	71.6	66.6	68.8	79.3
INFLUENZA-----	117,642	8,421	38,678	27,178	43,365	63.3	18.1	73.1	47.8	146.4
OTHER RESPIRATORY CONDITIONS-----	43,179	13,260	9,408	13,036	7,476	23.2	28.5	17.8	22.9	25.2
DIGESTIVE SYSTEM CONDITIONS-----	36,387	9,624	9,180	12,456	5,127	19.6	20.7	17.4	21.9	17.3
INJURIES-----	96,493	15,415	27,638	34,297	19,142	51.9	33.2	52.2	60.4	64.6
FRACTURES, DISLOCATIONS, SPRAINS, AND STRAINS-----	48,138	5,659	17,473	13,437	11,569	25.9	12.2	33.0	23.7	39.1
OPEN WOUNDS AND LACERATIONS-----	12,653	2,471	2,647	5,950	1,584	6.8	5.3	5.0	10.5	5.3
CONTUSIONS AND SUPERFICIAL INJURIES-----	13,375	2,307	2,327	6,942	1,799	7.2	5.0	4.4	12.2	6.1
OTHER CURRENT INJURIES-----	22,327	4,978	5,191	7,968	4,190	12.0	10.7	9.8	14.0	14.1
ALL OTHER ACUTE CONDITIONS-----	106,798	25,106	27,166	38,665	15,861	57.5	54.0	51.4	68.1	53.6
MALE										
ALL ACUTE CONDITIONS-----	272,897	56,178	69,508	89,780	57,431	303.0	251.9	267.0	329.1	397.1
INFECTIVE AND PARASITIC DISEASES-----	51,041	14,479	11,945	17,486	7,130	56.7	64.9	45.9	64.1	49.3
RESPIRATORY CONDITIONS-----	131,944	24,261	36,746	36,784	34,153	146.5	108.8	141.2	134.8	236.2
UPPER RESPIRATORY CONDITIONS-----	60,760	14,931	16,834	16,558	12,437	67.5	66.9	64.7	60.7	86.0
INFLUENZA-----	50,896	4,310	15,961	12,194	18,431	56.5	19.3	61.3	44.7	127.5
OTHER RESPIRATORY CONDITIONS-----	20,288	5,021	3,951	8,031	3,285	22.5	22.5	15.2	29.4	22.7
DIGESTIVE SYSTEM CONDITIONS-----	15,007	3,716	3,201	5,746	2,344	16.7	16.7	12.3	21.1	16.2
INJURIES-----	50,812	8,370	11,789	19,657	10,995	56.4	37.5	45.3	72.0	76.0
FRACTURES, DISLOCATIONS, SPRAINS, AND STRAINS-----	25,442	2,797	7,912	7,813	6,920	28.2	12.5	30.4	28.6	47.9
OPEN WOUNDS AND LACERATIONS-----	6,669	"	"	3,152	"	7.4	"	"	11.6	"
CONTUSIONS AND SUPERFICIAL INJURIES-----	6,893	1,778	"	3,656	"	7.7	8.0	"	13.4	"
OTHER CURRENT INJURIES-----	11,807	2,416	2,051	5,037	2,304	13.1	10.8	7.9	18.5	15.9
ALL OTHER ACUTE CONDITIONS-----	24,094	5,351	5,827	10,107	2,809	26.7	24.0	22.4	37.0	19.4
FEMALE										
ALL ACUTE CONDITIONS-----	369,844	80,252	106,980	110,316	72,295	386.4	332.0	398.2	373.7	476.9
INFECTIVE AND PARASITIC DISEASES-----	60,098	16,839	17,233	17,888	8,138	62.8	69.7	64.1	60.6	53.7
RESPIRATORY CONDITIONS-----	159,980	30,706	46,579	42,521	40,174	167.1	127.0	173.4	144.0	265.0
UPPER RESPIRATORY CONDITIONS-----	70,343	18,356	18,406	22,532	11,049	73.5	75.9	68.5	76.3	72.9
INFLUENZA-----	66,745	4,111	22,717	14,984	24,934	69.7	17.0	84.5	50.8	164.5
OTHER RESPIRATORY CONDITIONS-----	22,891	8,239	5,457	5,005	4,191	23.9	34.1	20.3	17.0	27.6
DIGESTIVE SYSTEM CONDITIONS-----	21,381	5,908	5,979	6,710	2,784	22.3	24.4	22.3	22.7	18.4
INJURIES-----	45,681	7,045	15,849	14,639	8,148	47.7	29.1	59.0	49.6	53.8
FRACTURES, DISLOCATIONS, SPRAINS, AND STRAINS-----	22,697	2,862	9,562	5,624	4,649	23.7	11.8	35.6	19.1	30.7
OPEN WOUNDS AND LACERATIONS-----	5,983	"	"	2,798	"	6.3	"	"	9.5	"
CONTUSIONS AND SUPERFICIAL INJURIES-----	6,482	"	1,897	3,286	"	6.8	"	7.1	11.1	"
OTHER CURRENT INJURIES-----	10,519	2,562	3,140	2,931	1,887	11.0	10.6	11.7	9.9	12.4
ALL OTHER ACUTE CONDITIONS-----	82,704	19,754	21,339	28,558	13,052	86.4	81.7	79.4	96.7	86.1

TABLE 23. INCIDENCE OF ACUTE CONDITIONS PER QUARTER AND NUMBER OF ACUTE CONDITIONS PER 100 PERSONS PER QUARTER, BY SEX AND AGE: UNITED STATES, JULY 1963-JUNE 1964

[Data are based on household interviews of the civilian, noninstitutional population. The survey design, general qualifications, and information on the reliability of the estimates are given in Appendix I. Definitions of terms are given in Appendix II.]

SEX AND AGE	1963		1964		1963		1964	
	JULY- SEPTEMBER	OCTOBER- DECEMBER	JANUARY- MARCH	APRIL- JUNE	JULY- SEPTEMBER	OCTOBER- DECEMBER	JANUARY- MARCH	APRIL- JUNE
BOTH SEXES	INCIDENCE OF ACUTE CONDITIONS IN THOUSANDS				NUMBER OF ACUTE CONDITIONS PER 100 PERSONS PER QUARTER			
ALL AGES----	68,161	104,972	118,628	95,597	36.9	56.6	63.7	51.
UNDER 5 YEARS-----	14,523	22,542	21,871	17,147	70.1	108.5	105.5	83.
5-14 YEARS-----	16,472	27,203	31,216	28,762	43.5	71.4	81.6	74.
15-24 YEARS-----	9,268	15,293	17,820	13,455	35.0	57.0	65.7	49.
25-44 YEARS-----	15,709	21,930	23,444	18,619	34.6	48.4	51.7	41.
45-64 YEARS-----	8,852	13,393	17,909	12,385	23.7	35.7	47.5	32.
65 & OVER YEARS---	3,336	4,611	6,369	5,229	19.7	27.1	37.4	30.
MALE								
ALL AGES----	31,896	49,014	54,512	44,761	35.6	54.5	60.4	49.
UNDER 5 YEARS-----	7,602	11,192	10,753	9,300	72.0	105.8	101.8	88.
5-14 YEARS-----	8,677	14,498	15,252	14,582	45.1	75.0	78.5	74.
15-24 YEARS-----	3,955	7,039	7,325	6,114	31.5	55.2	56.8	46.
25-44 YEARS-----	6,512	8,590	9,819	7,986	30.1	39.7	45.4	37.
45-64 YEARS-----	3,859	5,771	8,841	4,755	21.4	31.8	48.6	26.
65 & OVER YEARS---	*	*	2,523	*	*	*	33.4	
FEMALE								
ALL AGES----	36,265	55,959	64,116	50,836	38.1	58.6	66.9	52.
UNDER 5 YEARS-----	6,921	11,351	11,117	7,847	68.1	111.4	109.4	77.
5-14 YEARS-----	7,795	12,706	15,964	14,179	41.8	67.8	84.8	75.
15-24 YEARS-----	5,313	8,253	10,495	7,341	38.2	58.7	73.8	51.
25-44 YEARS-----	9,197	13,340	13,625	10,633	38.8	56.3	57.5	44.
45-64 YEARS-----	4,994	7,622	9,068	7,630	25.9	39.3	46.5	39.
65 & OVER YEARS---	*	2,687	3,846	3,205	*	28.4	40.5	33.

NOTE: Excluded from these statistics are all conditions involving neither restricted activity nor medical attention.

TABLE 24. INCIDENCE OF ACUTE CONDITIONS PER QUARTER AND NUMBER OF ACUTE CONDITIONS PER 100 PERSONS PER QUARTER, BY SEX AND CONDITION GROUP: UNITED STATES, JULY 1963-JUNE 1964

[Data are based on household interviews of the civilian, noninstitutional population. The survey design, general qualifications, and information on the reliability of the estimates are given in Appendix I. Definitions of terms are given in Appendix II]

SEX AND CONDITION GROUP	1963		1964		1963		1964	
	JULY-SEPTEMBER	OCTOBER-DECEMBER	JANUARY-MARCH	APRIL-JUNE	JULY-SEPTEMBER	OCTOBER-DECEMBER	JANUARY-MARCH	APRIL-JUNE
BOTH SEXES	INCIDENCE OF ACUTE CONDITIONS IN THOUSANDS				NUMBER OF ACUTE CONDITIONS PER 100 PERSONS PER QUARTER			
ALL ACUTE CONDITIONS-	68,161	104,972	118,628	95,597	36.9	56.6	63.7	51.2
INFECTIVE AND PARASITIC DISEASES-----	7,598	10,090	16,507	21,088	4.1	5.4	8.9	11.3
RESPIRATORY CONDITIONS-----	24,907	65,856	73,027	40,511	13.5	35.5	39.2	21.7
UPPER RESPIRATORY CONDITIONS-----	17,123	42,789	47,596	26,288	9.3	23.1	25.6	14.1
INFLUENZA-----	6,685	20,688	22,471	12,135	3.6	11.2	12.1	6.5
OTHER RESPIRATORY CONDITIONS-----	::	::	2,960	::	::	::	1.6	::
DIGESTIVE SYSTEM CONDITIONS-----	5,759	4,475	5,127	5,248	3.1	2.4	2.8	2.8
INJURIES-----	16,195	12,978	11,156	14,897	8.8	7.0	6.0	8.0
ALL OTHER ACUTE CONDITIONS-----	13,702	11,574	12,811	13,853	7.4	6.2	6.9	7.4
MALE								
ALL ACUTE CONDITIONS-	31,896	49,014	54,512	44,761	35.6	54.5	60.4	49.5
INFECTIVE AND PARASITIC DISEASES-----	3,557	4,858	7,811	9,776	4.0	5.4	8.7	10.8
RESPIRATORY CONDITIONS-----	11,059	30,477	33,835	18,438	12.3	33.9	37.5	20.4
UPPER RESPIRATORY CONDITIONS-----	7,501	20,177	22,551	11,889	8.4	22.4	25.0	13.1
INFLUENZA-----	2,994	9,220	10,208	5,408	3.3	10.3	11.3	6.0
OTHER RESPIRATORY CONDITIONS-----	::	::	::	::	::	::	::	::
DIGESTIVE SYSTEM CONDITIONS-----	2,965	::	::	::	3.3	::	::	::
INJURIES-----	9,542	7,438	6,308	9,607	10.7	8.3	7.0	10.6
ALL OTHER ACUTE CONDITIONS-----	4,772	3,890	4,313	4,541	5.3	4.3	4.8	5.0
FEMALE								
ALL ACUTE CONDITIONS-	36,265	55,959	64,116	50,836	38.1	58.6	66.9	52.8
INFECTIVE AND PARASITIC DISEASES-----	4,041	5,232	8,697	11,312	4.2	5.5	9.1	11.8
RESPIRATORY CONDITIONS-----	13,848	35,379	39,192	22,073	14.6	37.0	40.9	22.9
UPPER RESPIRATORY CONDITIONS-----	9,622	22,613	25,044	14,399	10.1	23.7	26.1	15.0
INFLUENZA-----	3,691	11,469	12,263	6,727	3.9	12.0	12.8	7.0
OTHER RESPIRATORY CONDITIONS-----	::	::	::	::	::	::	::	::
DIGESTIVE SYSTEM CONDITIONS-----	2,793	::	2,881	2,849	2.9	::	3.0	3.0
INJURIES-----	6,653	5,540	4,848	5,291	7.0	5.8	5.1	5.5
ALL OTHER ACUTE CONDITIONS-----	8,930	7,684	8,498	9,311	9.4	8.0	8.9	9.7

NOTE: Excluded from these statistics are all conditions involving neither restricted activity nor medical attention.

TABLE 25. DAYS OF RESTRICTED ACITIVITY ASSOCIATED WITH ACUTE CONDITIONS PER QUARTER AND DA OF RESTRICTED ACTIVITY PER 100 PERSONS PER QUARTER, BY SEX AND AGE: UNITED STATES, JULY 1963 AND JUNE 1964

[Data are based on household interviews of the civilian, noninstitutional population. The survey design, general qualifications, and information on the reliability of the estimates are given in Appendix I. Definitions of terms are given in Appendix II.]

SEX AND AGE	1963		1964		1963		1964	
	JULY- SEPTEMBER	OCTOBER- DECEMBER	JANUARY- MARCH	APRIL- JUNE	JULY- SEPTEMBER	OCTOBER- DECEMBER	JANUARY- MARCH	APRIL- JUNE
<u>BOTH SEXES</u>	DAYS OF RESTRICTED ACTIVITY IN THOUSANDS				DAYS OF RESTRICTED ACTIVITY PER 100 PERSONS PER QUARTER			
ALL AGES----	262,471	370,827	469,437	404,957	142.1	199.9	252.2	216.1
UNDER 5 YEARS-----	31,720	47,062	62,305	53,269	153.1	226.6	300.7	251.1
5-14 YEARS-----	46,338	81,403	112,323	104,381	122.3	213.8	293.7	271.1
15-24 YEARS-----	31,150	54,959	62,154	55,369	117.7	205.0	229.1	201.1
25-44 YEARS-----	69,425	85,333	87,439	72,894	153.0	188.3	192.9	160.1
45-64 YEARS-----	49,796	66,840	92,804	71,332	133.3	178.1	246.3	186.1
65 & OVER YEARS---	34,042	35,230	52,413	47,712	200.9	207.4	307.5	276.1
<u>MALE</u>								
ALL AGES----	107,342	156,310	215,090	180,366	119.8	173.8	238.4	195.1
UNDER 5 YEARS-----	15,861	22,986	30,340	29,970	150.3	217.2	287.3	284.1
5-14 YEARS-----	21,950	39,890	54,908	56,844	114.0	206.2	282.7	291.1
15-24 YEARS-----	12,377	22,920	23,225	21,295	98.6	179.9	180.0	163.1
25-44 YEARS-----	21,606	31,109	35,603	26,425	99.8	143.9	164.7	122.1
45-64 YEARS-----	24,290	30,527	48,018	30,496	134.5	168.4	264.1	167.1
65 & OVER YEARS---	11,259	8,878	22,995	15,336	149.7	117.8	304.7	202.1
<u>FEMALE</u>								
ALL AGES----	155,129	214,517	254,347	224,591	163.0	224.5	265.2	233.1
UNDER 5 YEARS-----	15,860	24,076	31,964	23,299	156.0	236.3	314.5	230.1
5-14 YEARS-----	24,388	41,513	57,415	47,537	130.8	221.6	305.1	251.1
15-24 YEARS-----	18,773	32,039	38,929	34,074	135.0	227.8	273.7	237.1
25-44 YEARS-----	47,819	54,223	51,836	46,468	201.7	228.7	218.7	196.1
45-64 YEARS-----	25,506	36,314	44,786	40,836	132.1	187.1	229.8	208.1
65 & OVER YEARS---	22,784	26,352	29,418	32,376	241.9	278.8	309.8	339.1

TABLE 26. DAYS OF RESTRICTED ACTIVITY ASSOCIATED WITH ACUTE CONDITIONS PER QUARTER AND DAYS OF RESTRICTED ACTIVITY PER 100 PERSONS PER QUARTER, BY SEX AND CONDITION GROUP: UNITED STATES, JULY 1963-JUNE 1964

Data are based on household interviews of the civilian, noninstitutional population. The survey design, general qualifications, and information on the reliability of the estimates are given in Appendix I. Definitions of terms are given in Appendix II

SEX AND CONDITION GROUP	1963		1964		1963		1964	
	JULY-SEPTEMBER	OCTOBER-DECEMBER	JANUARY-MARCH	APRIL-JUNE	JULY-SEPTEMBER	OCTOBER-DECEMBER	JANUARY-MARCH	APRIL-JUNE
<u>BOTH SEXES</u>	DAYS OF RESTRICTED ACTIVITY IN THOUSANDS				DAYS OF RESTRICTED ACTIVITY PER 100 PERSONS PER QUARTER			
ALL ACUTE CONDITIONS-	262,471	370,827	469,437	404,957	142.1	199.9	252.2	216.9
INFECTIVE AND PARASITIC DISEASES-----	28,606	33,807	79,757	96,927	15.5	18.2	42.8	51.9
RESPIRATORY CONDITIONS-----	63,227	187,932	229,822	129,399	34.2	101.3	123.5	69.3
UPPER RESPIRATORY CONDITIONS-----	35,780	103,365	126,431	65,079	19.4	55.7	67.9	34.9
INFLUENZA-----	16,078	65,279	85,177	44,976	8.7	35.2	45.8	24.1
OTHER RESPIRATORY CONDITIONS-----	11,370	19,289	18,215	19,345	6.2	10.4	9.8	10.4
DIGESTIVE SYSTEM CONDITIONS-----	17,109	16,128	18,761	17,489	9.3	8.7	10.1	9.4
INJURIES-----	82,019	75,910	80,404	92,257	44.4	40.9	43.2	49.4
ALL OTHER ACUTE CONDITIONS-----	71,509	57,050	60,693	68,885	38.7	30.8	32.6	36.9
<u>MALE</u>								
ALL ACUTE CONDITIONS-	107,342	156,310	215,090	180,366	119.8	173.8	238.4	199.3
INFECTIVE AND PARASITIC DISEASES-----	13,355	15,828	37,838	46,306	14.9	17.6	41.9	51.2
RESPIRATORY CONDITIONS-----	28,307	78,494	105,792	56,653	31.6	87.3	117.2	62.6
UPPER RESPIRATORY CONDITIONS-----	15,256	43,798	58,573	26,914	17.0	48.7	64.9	29.7
INFLUENZA-----	7,729	27,744	38,911	18,847	8.6	30.8	43.1	20.8
OTHER RESPIRATORY CONDITIONS-----	"	6,952	8,308	10,893	"	7.7	9.2	12.0
DIGESTIVE SYSTEM CONDITIONS-----	7,674	6,293	7,803	9,970	8.6	7.0	8.6	11.0
INJURIES-----	43,680	40,435	44,142	48,844	48.8	45.0	48.9	54.0
ALL OTHER ACUTE CONDITIONS-----	14,325	15,258	19,514	18,593	16.0	17.0	21.6	20.5
<u>FEMALE</u>								
ALL ACUTE CONDITIONS-	155,129	214,517	254,347	224,591	163.0	224.5	265.2	233.4
INFECTIVE AND PARASITIC DISEASES-----	15,251	17,978	41,919	50,621	16.0	18.8	43.7	52.6
RESPIRATORY CONDITIONS-----	34,920	109,438	124,030	72,746	36.7	114.5	129.3	75.6
UPPER RESPIRATORY CONDITIONS-----	20,523	59,567	67,857	38,165	21.6	62.3	70.8	39.7
INFLUENZA-----	8,349	37,535	46,266	26,129	8.8	39.3	48.2	27.2
OTHER RESPIRATORY CONDITIONS-----	6,048	12,336	9,907	8,452	6.4	12.9	10.3	8.8
DIGESTIVE SYSTEM CONDITIONS-----	9,435	9,835	10,958	7,519	9.9	10.3	11.4	7.8
INJURIES-----	38,339	35,475	36,261	43,413	40.3	37.1	37.8	45.1
ALL OTHER ACUTE CONDITIONS-----	57,183	41,791	41,179	50,292	60.1	43.7	42.9	52.3

TABLE 27. DAYS OF BED DISABILITY ASSOCIATED WITH ACUTE CONDITIONS PER QUARTER AND DAYS OF BED DISABILITY PER 100 PERSONS PER QUARTER, BY SEX AND AGE: UNITED STATES, JULY 1953-JUNE 1964
 [Data are based on household interviews of the civilian, noninstitutional population. The survey design, general qualifications, and information on the reliability of the estimates are given in Appendix I. Definitions of terms are given in Appendix II]

SEX AND AGE	1963		1964		1963		1964	
	JULY- SEPTEMBER	OCTOBER- DECEMBER	JANUARY- MARCH	APRIL- JUNE	JULY- SEPTEMBER	OCTOBER- DECEMBER	JANUARY- MARCH	APRI JUN
<u>BOTH SEXES</u>	DAYS OF BED DISABILITY IN THOUSANDS				DAYS OF BED DISABILITY PER 100 PERSONS PER QUARTER			
ALL AGES----	109,812	152,081	207,462	173,385	59.4	82.0	111.5	92
UNDER 5 YEARS-----	16,524	22,037	25,530	27,424	79.7	106.1	123.2	132
5-14 YEARS-----	17,821	37,577	48,745	42,993	47.0	98.7	127.5	112
15-24 YEARS-----	13,785	24,366	35,046	26,398	52.1	90.9	129.2	96
25-44 YEARS-----	28,338	34,159	42,143	32,434	62.5	75.4	93.0	71
45-64 YEARS-----	19,013	22,171	38,941	28,275	50.9	59.1	103.4	74
65 & OVER YEARS---	14,331	11,771	17,056	15,861	84.6	69.3	100.1	92
<u>MALE</u>								
ALL AGES----	46,853	63,209	89,065	73,770	52.3	70.3	98.7	81
UNDER 5 YEARS-----	9,195	10,996	12,003	14,849	87.1	103.9	113.7	141
5-14 YEARS-----	6,932	17,692	23,306	21,358	36.0	91.5	120.0	109
15-24 YEARS-----	"	9,542	10,758	9,367	"	74.9	83.4	71
25-44 YEARS-----	9,023	12,533	16,557	12,135	41.7	58.0	76.6	56
45-64 YEARS-----	11,190	8,754	19,051	10,233	62.0	48.3	104.8	56
65 & OVER YEARS---	6,077	"	7,390	"	80.8	"	97.9	
<u>FEMALE</u>								
ALL AGES----	62,959	88,872	118,397	99,615	66.2	93.0	123.5	103
UNDER 5 YEARS-----	7,329	11,041	13,527	12,575	72.1	108.4	133.1	124
5-14 YEARS-----	10,889	19,885	25,439	21,636	58.4	106.1	135.2	114
15-24 YEARS-----	9,350	14,824	24,289	17,031	67.2	105.4	170.8	118
25-44 YEARS-----	19,315	21,626	25,586	20,299	81.5	91.2	107.9	85
45-64 YEARS-----	7,823	13,417	19,890	18,042	40.5	69.1	102.0	92
65 & OVER YEARS---	8,255	8,079	9,666	10,032	87.7	85.5	101.8	105

TABLE 28. DAYS OF BED DISABILITY ASSOCIATED WITH ACUTE CONDITIONS PER QUARTER AND DAYS OF BED DISABILITY PER 100 PERSONS PER QUARTER, BY SEX AND CONDITION GROUP: UNITED STATES, JULY 1963-JUNE 1964

[Data are based on household interviews of the civilian, noninstitutional population. The survey design, general qualifications, and information on the reliability of the estimates are given in Appendix I. Definitions of terms are given in Appendix II]

SEX AND CONDITION GROUP	1963		1964		1963		1964	
	JULY- SEPTEMBER	OCTOBER- DECEMBER	JANUARY- MARCH	APRIL- JUNE	JULY- SEPTEMBER	OCTOBER- DECEMBER	JANUARY- MARCH	APRIL- JUNE
BOTH SEXES	DAYS OF BED DISABILITY IN THOUSANDS				DAYS OF BED DISABILITY PER 100 PERSONS PER QUARTER			
ALL ACUTE CONDITIONS-	109,812	152,081	207,462	173,385	59.4	82.0	111.5	92.9
INFECTIVE AND PARASITIC DISEASES-----	16,592	17,915	31,920	44,711	9.0	9.7	17.1	23.9
RESPIRATORY CONDITIONS-----	29,711	87,133	110,098	64,983	16.1	47.0	59.1	34.8
UPPER RESPIRATORY CONDITIONS-----	14,258	39,770	49,875	27,200	7.7	21.4	26.8	14.6
INFLUENZA-----	8,799	34,369	48,649	25,824	4.8	18.5	26.1	13.8
OTHER RESPIRATORY CONDITIONS-----	6,654	12,993	11,574	11,958	3.6	7.0	6.2	6.4
DIGESTIVE SYSTEM CONDITIONS-----	7,830	8,941	10,842	8,774	4.2	4.8	5.8	4.7
INJURIES-----	25,451	16,307	27,065	27,670	13.8	8.8	14.5	14.8
ALL OTHER ACUTE CONDITIONS-----	30,228	21,785	27,538	27,247	16.4	11.7	14.8	14.6
MALE								
ALL ACUTE CONDITIONS-	46,853	63,209	89,065	73,770	52.3	70.3	98.7	81.5
INFECTIVE AND PARASITIC DISEASES-----	7,884	9,183	14,725	19,249	8.8	10.2	16.3	21.3
RESPIRATORY CONDITIONS-----	13,561	37,801	49,800	30,783	15.1	42.0	55.2	34.0
UPPER RESPIRATORY CONDITIONS-----	6,210	18,802	22,869	12,879	6.9	20.9	25.3	14.2
INFLUENZA-----	"	14,544	21,536	10,750	"	16.2	23.9	11.9
OTHER RESPIRATORY CONDITIONS-----	"	"	"	7,154	"	"	"	7.9
DIGESTIVE SYSTEM CONDITIONS-----	"	"	"	"	"	"	"	"
INJURIES-----	15,238	7,533	13,953	14,089	17.0	8.4	15.5	15.6
ALL OTHER ACUTE CONDITIONS-----	6,198	"	6,903	"	6.9	"	7.6	"
FEMALE								
ALL ACUTE CONDITIONS-	62,959	88,872	118,397	99,615	66.2	93.0	123.5	103.5
INFECTIVE AND PARASITIC DISEASES-----	8,708	8,732	17,195	25,462	9.2	9.1	17.9	26.5
RESPIRATORY CONDITIONS-----	16,150	49,332	60,298	34,200	17.0	51.6	62.9	35.5
UPPER RESPIRATORY CONDITIONS-----	8,047	20,968	27,006	14,321	8.5	21.9	28.2	14.9
INFLUENZA-----	"	19,825	27,113	15,074	"	20.7	28.3	15.7
OTHER RESPIRATORY CONDITIONS-----	"	8,538	6,179	"	"	8.9	6.4	"
DIGESTIVE SYSTEM CONDITIONS-----	"	"	7,156	"	"	"	7.5	"
INJURIES-----	10,213	8,775	13,112	13,582	10.7	9.2	13.7	14.1
ALL OTHER ACUTE CONDITIONS-----	24,030	16,144	20,635	21,896	25.3	16.9	21.5	22.8

TABLE 29. INCIDENCE OF ACUTE RESPIRATORY CONDITIONS AND ASSOCIATED DISABILITY DAYS PER QUARTER AND NUMBER OF ACUTE RESPIRATORY CONDITIONS PER 100 PERSONS PER QUARTER BY AGE: UNITED STATES, JULY 1963-JUNE 1964

[Data are based on household interviews of the civilian, noninstitutional population. The survey design, general qualifications, and information on the reliability of the estimates are given in Appendix I. Definitions of terms are given in Appendix II]

AGE	1963		1964		1963		1964	
	JULY- SEPTEMBER	OCTOBER- DECEMBER	JANUARY- MARCH	APRIL- JUNE	JULY- SEPTEMBER	OCTOBER- DECEMBER	JANUARY- MARCH	APRIL- JUNE
	INCIDENCE OF ACUTE RESPIRATORY CONDITIONS IN THOUSANDS				NUMBER OF ACUTE RESPIRATORY CONDITIONS PER 100 PERSONS PER QUARTER			
ALL AGES----	24,907	65,856	73,027	40,511	13.5	35.5	39.2	21.7
UNDER 5 YEARS-----	6,139	15,642	13,597	7,887	29.6	75.3	65.6	38.7
5-14 YEARS-----	6,228	17,625	17,586	10,253	16.4	46.3	46.0	26.7
15-24 YEARS-----	2,936	8,532	10,955	5,473	11.1	31.8	40.4	19.6
25-44 YEARS-----	5,330	13,198	14,098	8,473	11.8	29.1	31.1	18.7
45-64 YEARS-----	3,168	7,881	12,341	5,732	8.5	21.0	32.8	15.7
65 & OVER YEARS---	*	2,977	4,449	2,694	*	17.5	26.1	15.7
	DAYS OF RESTRICTED ACTIVITY IN THOUSANDS				DAYS OF RESTRICTED ACTIVITY PER 100 PERSONS PER QUARTER			
ALL AGES----	63,227	187,932	229,822	129,399	34.2	101.3	123.5	69.7
UNDER 5 YEARS-----	11,248	32,081	35,395	23,306	54.3	154.5	170.8	112.6
5-14 YEARS-----	16,068	50,244	50,501	28,793	42.4	131.9	132.1	75.6
15-24 YEARS-----	7,229	20,347	29,200	13,903	27.3	75.9	107.6	50.7
25-44 YEARS-----	12,411	38,120	42,277	23,199	27.4	84.1	93.3	51.7
45-64 YEARS-----	9,811	30,978	47,706	20,407	26.3	82.5	126.6	54.6
65 & OVER YEARS---	6,459	16,163	24,742	19,790	38.1	95.1	145.1	115.7
	DAYS OF BED DISABILITY IN THOUSANDS				DAYS OF BED DISABILITY PER 100 PERSONS PER QUARTER			
ALL AGES----	29,711	87,133	110,098	64,983	16.1	47.0	59.1	34.6
UNDER 5 YEARS-----	*	15,327	14,057	12,642	*	73.8	67.8	61.6
5-14 YEARS-----	7,970	25,819	25,454	15,665	21.0	67.8	66.6	40.6
15-24 YEARS-----	*	11,054	17,270	8,264	*	41.2	63.7	30.6
25-44 YEARS-----	6,003	18,041	23,078	10,535	13.2	39.8	50.9	23.6
45-64 YEARS-----	*	11,970	20,782	11,183	*	31.9	55.2	29.6
65 & OVER YEARS---	*	*	9,456	6,694	*	*	55.5	39.6

NOTE: Excluded from these statistics are all conditions involving neither restricted activity nor medical attention.

TABLE 30. INCIDENCE OF INJURIES AND ASSOCIATED DISABILITY DAYS PER QUARTER AND NUMBER OF INJURIES PER 100 PERSONS, BY AGE: UNITED STATES, JULY 1963-JUNE 1964

[Data are based on household interviews of the civilian, noninstitutional population: The survey design, general qualifications, and information on the reliability of the estimates are given in Appendix I. Definitions of terms are given in Appendix II]

AGE	1963		1964		1963		1964	
	JULY- SEPTEMBER	OCTOBER- DECEMBER	JANUARY- MARCH	APRIL- JUNE	JULY- SEPTEMBER	OCTOBER- DECEMBER	JANUARY- MARCH	APRIL- JUNE
	INCIDENCE OF INJURIES IN THOUSANDS				NUMBER OF INJURIES PER 100 PERSONS PER QUARTER			
ALL AGES----	16,195	12,978	11,156	14,897	8.8	7.0	6.0	8.0
UNDER 15 YEARS----	6,672	4,372	3,374	5,924	11.4	7.4	5.7	10.0
15-44 YEARS-----	6,247	5,738	5,102	5,706	8.7	8.0	7.0	7.8
45 & OVER YEARS---	3,277	2,867	2,680	3,268	6.0	5.3	4.9	5.9
	DAYS OF RESTRICTED ACTIVITY IN THOUSANDS				DAYS OF RESTRICTED ACTIVITY PER 100 PERSONS PER QUARTER			
ALL AGES----	82,019	75,910	80,404	92,257	44.4	40.9	43.2	49.4
UNDER 15 YEARS----	16,754	11,541	8,723	15,862	28.6	19.6	14.8	26.9
15-44 YEARS-----	28,726	35,088	33,849	36,597	40.0	48.6	46.7	50.3
45 & OVER YEARS---	36,540	29,281	37,832	39,799	67.3	53.7	69.1	72.5
	DAYS OF BED DISABILITY IN THOUSANDS				DAYS OF BED DISABILITY PER 100 PERSONS PER QUARTER			
ALL AGES----	25,451	16,307	27,065	27,670	13.8	8.8	14.5	14.8
UNDER 15 YEARS----	*	*	*	*	*	*	*	*
15-44 YEARS-----	7,885	8,295	13,362	11,025	11.0	11.5	18.4	15.2
45 & OVER YEARS---	13,478	6,709	12,095	12,629	24.8	12.3	22.1	23.0

NOTE: Excluded from these statistics are all conditions involving neither restricted activity nor medical attention.

TABLE 31. POPULATION USED IN OBTAINING RATES SHOWN IN THIS PUBLICATION, BY RESIDENCE, REGION, SEX AND AGE: UNITED STATES, JULY 1963-JUNE 1964

[Data are based on household interviews of the civilian, noninstitutional population. The survey design, general qualifications, and information on the reliability of the estimates are given in Appendix I. Definitions of terms are given in Appendix II]

SEX AND AGE	RESIDENCE				REGION			
	TOTAL	ALL SMSA	NON-SMSA NONFARM	NON-SMSA FARM	NORTH-EAST	NORTH CENTRAL	SOUTH	WEST
<u>BOTH SEXES</u>	POPULATION IN THOUSANDS							
ALL AGES-----	185,797	118,731	55,346	11,720	46,476	52,898	56,804	29,6
UNDER 5 YEARS-----	20,721	13,193	6,354	1,174	4,869	5,964	6,467	3,4
5-14 YEARS-----	38,160	23,877	11,562	2,720	8,885	11,085	11,909	6,2
15-24 YEARS-----	26,960	16,920	8,379	1,660	6,465	7,337	9,016	4,1
25-44 YEARS-----	45,333	30,372	12,596	2,365	11,626	12,690	13,518	7,5
45 & OVER YEARS-----	54,624	34,368	16,455	3,800	14,632	15,823	15,894	8,2
45-64 YEARS-----	37,602	24,399	10,562	2,641	10,118	10,670	11,083	5,7
65 & OVER YEARS-----	17,022	9,970	5,893	1,159	4,514	5,152	4,811	2,5
UNDER 6 YEARS-----	24,973	15,901	7,637	1,435	5,790	7,221	7,807	4,1
6-16 YEARS-----	40,956	25,496	12,410	3,051	9,681	11,786	12,857	6,6
17-44 YEARS-----	65,244	42,966	18,844	3,434	16,373	18,069	20,246	10,5
<u>MALE</u>								
ALL AGES-----	90,078	57,266	26,737	6,075	22,303	26,029	27,284	14,4
UNDER 5 YEARS-----	10,558	6,751	3,198	609	2,417	3,117	3,284	1,7
5-14 YEARS-----	19,382	12,071	5,889	1,422	4,438	5,637	6,061	3,2
15-24 YEARS-----	12,815	8,039	3,881	896	3,068	3,572	4,241	1,9
25-44 YEARS-----	21,627	14,455	6,001	1,171	5,581	6,206	6,301	3,5
45 & OVER YEARS-----	25,696	15,950	7,768	1,978	6,799	7,498	7,397	4,0
45-64 YEARS-----	18,153	11,676	5,114	1,362	4,882	5,192	5,228	2,8
65 & OVER YEARS-----	7,544	4,273	2,654	616	1,917	2,306	2,169	1,1
UNDER 6 YEARS-----	12,679	8,097	3,854	729	2,866	3,758	3,960	2,0
6-16 YEARS-----	20,830	12,915	6,313	1,602	4,882	6,002	6,524	3,4
17-44 YEARS-----	30,872	20,304	8,802	1,766	7,757	8,772	9,403	4,9
<u>FEMALE</u>								
ALL AGES-----	95,720	61,466	28,610	5,644	24,173	26,869	29,520	15,1
UNDER 5 YEARS-----	10,163	6,442	3,156	566	2,451	2,847	3,183	1,6
5-14 YEARS-----	18,778	11,806	5,673	1,299	4,446	5,448	5,848	3,0
15-24 YEARS-----	14,145	8,882	4,499	764	3,397	3,766	4,775	2,2
25-44 YEARS-----	23,706	15,918	6,595	1,194	6,045	6,484	7,217	3,9
45 & OVER YEARS-----	28,928	18,419	8,687	1,822	7,833	8,325	8,497	4,2
45-64 YEARS-----	19,449	12,722	5,448	1,279	5,236	5,478	5,855	2,8
65 & OVER YEARS-----	9,479	5,696	3,239	543	2,597	2,847	2,642	1,3
UNDER 6 YEARS-----	12,294	7,804	3,783	706	2,924	3,464	3,848	2,0
6-16 YEARS-----	20,126	12,581	6,097	1,449	4,799	5,783	6,333	3,2
17-44 YEARS-----	34,373	22,662	10,042	1,668	8,616	9,297	10,842	5,6

NOTE: For official population estimates for more general use, see Bureau of the Census reports on the civilian population of the United States, in Current Population Reports, Series P-20, P-25, and P-60.

TABLE 32. POPULATION OF CURRENTLY EMPLOYED PERSONS, BY SEX AND AGE: UNITED STATES, JULY 1963-JUNE 1964

[Data are based on household interviews of the civilian, noninstitutional population. The survey design, general qualifications, and information on the reliability of the estimates are given in Appendix I. Definitions of terms are given in Appendix II]

AGE	BOTH SEXES	MALE	FEMALE
	POPULATION IN THOUSANDS		
ALL AGES-17 YEARS & OVER-----	70,122	45,730	24,392
17-44 YEARS-----	41,614	27,201	14,413
45 YEARS & OVER-----	28,508	18,529	9,979

NOTE: For official population estimates for more general use, see Bureau of Census reports on the civilian population of the United States, in Current Population Reports, Series P-20, P-25, and P-60; and Bureau of Labor Statistics monthly report, Employment and Earnings.

TABLE 33. POPULATION USED IN OBTAINING RATES SHOWN IN THIS PUBLICATION, BY QUARTER, SEX, AND AGE
UNITED STATES, JULY 1963-JUNE 1964

[Data are based on household interviews of the civilian, noninstitutional population. The survey design, general qualifications, and information on the reliability of the estimates are given in Appendix I. Definitions of terms are given in Appendix II]

SEX AND AGE	1963		1964	
	JULY- SEPTEMBER	OCTOBER- DECEMBER	JANUARY- MARCH	APRIL- JUNE
<u>BOTH SEXES</u>	POPULATION IN THOUSANDS			
ALL AGES-----	184,754	185,502	186,135	186,7
UNDER 5 YEARS-----	20,720	20,769	20,722	20,4
5-14 YEARS-----	37,902	38,079	38,241	38,4
15-24 YEARS-----	26,461	26,807	27,128	27,4
25-44 YEARS-----	45,361	45,325	45,324	45,2
45-64 YEARS-----	37,369	37,532	37,673	37,4
65 & OVER YEARS-----	16,941	16,990	17,046	17,2
<u>MALE</u>				
ALL AGES-----	89,590	89,944	90,239	90,2
UNDER 5 YEARS-----	10,553	10,581	10,560	10,2
5-14 YEARS-----	19,253	19,342	19,423	19,2
15-24 YEARS-----	12,551	12,741	12,906	13,0
25-44 YEARS-----	21,656	21,618	21,619	21,4
45-64 YEARS-----	18,054	18,124	18,182	18,2
65 & OVER YEARS-----	7,523	7,539	7,548	7,2
<u>FEMALE</u>				
ALL AGES-----	95,163	95,558	95,896	96,2
UNDER 5 YEARS-----	10,167	10,188	10,162	10,2
5-14 YEARS-----	18,649	18,737	18,818	18,2
15-24 YEARS-----	13,909	14,066	14,222	14,2
25-44 YEARS-----	23,705	23,707	23,705	23,2
45-64 YEARS-----	19,315	19,408	19,491	19,2
65 & OVER YEARS-----	9,418	9,451	9,497	9,2

NOTE: For official population estimates for more general use, see Bureau of the Census reports on the civilian population of the United States, in Current Population Reports, Series P-P-25, and P-60.

APPENDIX I

TECHNICAL NOTES ON METHODS

Background of This Report

This report is one of a series of statistical reports prepared by the National Health Survey. It is based on information collected in a continuing nationwide sample of households in the Health Interview Survey, a major part of the program.

The Health Interview Survey utilizes a questionnaire which, in addition to personal and demographic characteristics, obtains information on illnesses, injuries, chronic conditions and impairments, and other health topics. As data relating to each of these various broad topics are tabulated and analyzed, separate reports are issued which cover one or more of the specific topics. The present report is based on the consolidated sample for 52 weeks of interviewing ending June 1964.

The population covered by the sample for the Health Interview Survey is the civilian, noninstitutional population of the United States living at the time of the interview. The sample does not include members of the Armed Forces, U.S. nationals living in foreign countries, or crews of vessels. It should also be noted that the estimates shown do not represent a complete inventory of injuries for the specified calendar period since no adjustment has been made for persons who incurred injuries during the 2-week-recall period but who died prior to the interview.

Statistical Design of the Health Interview Survey

General plan.—The sampling plan of the survey follows a multistage probability design which permits a continuous sampling of the civilian population of the United States. The first stage of this design consists of drawing a sample of 357 from about 1,900 geographically defined primary sampling units (PSU's) into which the United States has been divided. A PSU is a county, a group of contiguous counties, or a standard metropolitan statistical area.

With no loss in general understanding, the remaining stages can be combined and treated in this discussion as an ultimate stage. Within PSU's then, ultimate stage units called segments are defined in such a man-

ner that each segment contains an expected nine households. A segment consists of a cluster of neighboring households or addresses. Two general types of segments are used: (1) area segments which are defined geographically, and (2) B segments which are defined from a list of addresses from the Decennial Census and Survey of Construction. Each week a random sample of about 90 segments is drawn. In the approximate 800 households in those segments, household members are interviewed concerning factors related to health.

Since the household members interviewed each week are a representative sample of the population, samples for successive weeks can be combined into larger samples. Thus the design permits both continuous measurement of characteristics of high incidence or prevalence in the population and, through the larger consolidated samples, more detailed analysis of less common characteristics and smaller categories. The continuous collection has administrative and operational advantages as well as technical assets, since it permits field work to be handled with an experienced, stable staff.

Sample size and geographic detail.—The national sample plan for the 12-month period ending June 1964 included about 134,000 persons from 42,000 households in about 4,700 segments.

The overall sample was designed in such a fashion that tabulations can be provided for each of the major geographic regions and for urban and rural sectors of the United States.

Collection of data.—Field operations for the household survey are performed by the Bureau of the Census under specifications established by the National Center for Health Statistics. In accordance with these specifications the Bureau of the Census selects the sample; conducts the field interviewing as an agent of the Center; and performs a manual edit and coding of the questionnaires. The Health Survey, using Center electronic computers, carries out further editing and tabulates the edited data.

Estimating methods.—Each statistic produced by the survey—for example, the number of work-loss days occurring in a specified period—is the result of two stages of ratio estimation. In the first of these, the control factor is the ratio of the 1960 decennial population count to the 1960 estimated population in the Na-

tional Health Survey's first-stage sample of PSU's. These factors are applied for some 25 color-residence classes.

Later, ratios of sample-produced estimates of the population to official Bureau of the Census figures for current population in about 60 age-sex-color classes are computed and serve as second-stage factors for ratio estimating.

The effect of the ratio-estimating process is to make the sample more closely representative of the population by age, sex, color, and residence, thus reducing sampling variance.

As noted, each week's sample represents the population living during that week and characteristics of that population. Consolidation of samples over a time period, say a calendar quarter, produces estimates of average characteristics of the U.S. population for that calendar quarter. Similarly, population data for a year are averages of the four quarterly figures.

For statistics measuring the number of occurrences during a specified time period, such as the number of cases of influenza or number of bed-disability days, a similar computational procedure is used, but the statistics are interpreted differently. For these items, the questionnaire asks for the respondent's experience during the 2 calendar weeks prior to the week of interview. In such instances the estimated quarterly total for the statistic is simply 6.5 times the average 2-week estimate produced by the 13 successive samples taken during the period. The annual total is the sum of the four quarters. Thus, the experience of persons interviewed during a year—experience which actually occurred for each person in a 2-calendar-week interval prior to week of interview—is treated as though it measured the total of such experience during the year. Such interpretation leads to no significant bias.

General Qualifications

Nonresponse.—Data were adjusted for nonresponse by a procedure which imputes to persons in a household which was not interviewed the characteristics of persons in households in the same segment which were interviewed. The total noninterview rate was 5 percent; 1 percent was refusal; and the remainder was primarily due to the failure to find any eligible household respondent after repeated trials.

The interview process.—The statistics presented in this report are based on replies secured in interviews of persons in the sampled households. Each person 19 years of age and over, available at the time of interview, was interviewed individually. Proxy respondents within the household were employed for children and for adults not available at the time of the interview, provided the respondent was closely related to the person about whom information was being obtained.

There are limitations to the accuracy of diagnostic and other information collected in household interviews. For diagnostic information, the household respondent can, at best, pass on to the interviewer on the information the physician has given the family. For conditions not medically attended, diagnostic information is often no more than a description of symptom. However, other facts, such as the number of disability days caused by the condition, can be obtained more accurately from household members than from any other source, since only the persons concerned are in a position to report this information.

Rounding of numbers.—The original tabulations in which the data in this report are based show all estimates to the nearest whole unit. All consolidations were made from the original tabulations using the estimates to the nearest unit. In the final published tables the figures are rounded to the nearest thousand, although these are not necessarily accurate to that detail. Divided statistics such as rates and percent distributions are computed after the estimates on which they are based have been rounded to the nearest thousand.

Population figures.—Some of the published tables include population figures for specified categories. Except for certain overall totals by age and sex, which are adjusted to independent estimates, these figures are based on the sample of households in the National Health Survey. These are given primarily to provide denominators for rate computation, and for this purpose are more appropriate for use with the accompanying measures of health characteristics than other population data that may be available. In some instances these will permit users to recombine published data into classes more suitable to their specific needs. With the exception of the overall totals by age and sex, mentioned above, the population figures differ from corresponding figures (which are derived from different sources) published in reports of the Bureau of the Census. For population data for general use, see the official estimates presented in Bureau of the Census reports in the P-20, P-25, and P-60 series.

Reliability of Estimates

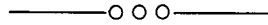
Since the estimates are based on a sample, they will differ somewhat from the figures that would have been obtained if a complete census had been taken using the same schedules, instructions, and interviewing personnel and procedures. As in any survey, the results are also subject to measurement error.

The standard error is primarily a measure of sampling variability, that is, the variations that might occur by chance because only a sample of the population is surveyed. As calculated for this report, the standard error also reflects part of the variation which arises in the measurement process. It does not include estimates of any biases which might lie in the data.

The chances are about 68 out of 100 that an estimate from the sample would differ from a complete census by less than the standard error. The chances are about 95 out of 100 that the difference would be less than twice the standard error and about 99 out of 100 that it would be less than $2\frac{1}{2}$ times as large.

The relative standard error of an estimate is obtained by dividing the standard error of the estimate by the estimate itself and is expressed as a percentage of the estimate. Charts from which the relative standard errors can be determined for estimates shown in the

report are presented in *Vital and Health Statistics*, Series 10, No. 10, pp. 51-56. In order to derive relative errors which would be applicable to a wide variety of health statistics and which could be prepared at a moderate cost, a number of approximations were required. As a result, the charts provide an estimate of the approximate relative standard error rather than the precise error for any specific aggregate or percentage. Additional information and a guide to the use of the standard error charts are included in the publication referred to above.



APPENDIX II

DEFINITIONS OF CERTAIN TERMS USED IN THIS REPORT

Terms Relating to Conditions

Condition.—A morbidity condition, or simply a condition, is any entry on the questionnaire which describes a departure from a state of physical or mental well-being. It results from a positive response to one of a series of "illness-recall" questions. In the coding and tabulating process, conditions are selected or classified according to a number of different criteria, such as, whether they were medically attended; whether they resulted in disability; whether they were acute or chronic; or according to the type of disease, injury, impairment, or symptom reported. For the purposes of each published report or set of tables, only those conditions recorded on the questionnaire which satisfy certain stated criteria are included.

Acute conditions are classified by type according to the International Classification of Diseases, 1955 Revision, with certain modifications adopted to make the code more suitable for a household-interview-type survey.

Acute condition.—An acute condition is defined as a condition which has lasted less than 3 months and which has involved either medical attention or restricted activity. Because of the procedures used to estimate incidence, the acute conditions included in this report are the conditions which had their onset during the 2 weeks prior to the interview week and which involved either medical attention or restricted activity during that 2-week period. However, it excludes certain conditions which are always classified as chronic (listed below) even though the onset occurred within 3 months.

Conditions always classified as chronic:

Asthma	Stomach ulcer
Hay fever	Any other chronic stomach trouble
Tuberculosis	Kidney stones or chronic kidney trouble
Chronic bronchitis	Arthritis or rheumatism
Repeated attacks of sinus trouble	Mental illness
Rheumatic fever	Diabetes
Hardening of the arteries	Thyroid trouble or goiter
High blood pressure	Any allergy
Heart trouble	Epilepsy
Stroke	Chronic nervous trouble
Trouble with varicose veins	Cancer

Hemorrhoids or piles	Chronic skin trouble
Tumor, cyst, or growth	Hernia or rupture
Chronic gallbladder or liver trouble	Prostate trouble
Deafness or serious trouble with hearing	Paralysis of any kind
Serious trouble with seeing, even when wearing glasses	Repeated trouble with back or spine
Cleft palate	Club foot
Any speech defect	Permanent stiffness or any deformity of the foot, leg, fingers, arm, or back
Missing fingers, hand, or arm—toes, foot, or leg	Condition present since birth
Palsy	

Condition groups.—Conditions are classified according to the International Classification of Disease 1955 Revision, with certain modifications adopted make the code more suitable for a household-interview survey. In this report, all tables which have data classified by type of condition employ a five-category grouping plus several selected subgroups. The International Classification code numbers included in each category are shown below:

<u>Condition Groups</u>	<u>International Classification Code Numbers</u>
I Infective and parasitic diseases	020-138
II Respiratory conditions	470-501, 511, 517-525, 527, 783
Upper respiratory	470-475, 511, 517
Influenza	480-483
Other respiratory	490-501, 518-525, 527, 783
III Digestive system conditions	530-559, 543-553, 570, 571, 573-587, 784, 785
IV Injuries	N800-N885, N890-N895, N900-N994, N996-N999
V Other conditions	All other acute code numbers

Onset of condition.—A condition is considered to have had its onset when it was first noticed. This could be the time the person first felt sick or became injured, or it could be the time when the person or his family was first told by a physician that he had a condition of which he was previously unaware.

Incidence of conditions.—The incidence of conditions is the estimated number of conditions having their onset in a specified time period. As previously mentioned, minor acute conditions, involving neither restricted activity nor medical attention are excluded from the statistics. The incidence data shown in some reports are further limited to various subclasses of conditions, such as "incidence of conditions involving bed disability."

Activity-restricting condition.—An activity restricting condition is a condition which has caused at least 1 day of restricted activity during the 2 calendar weeks before the interview week. (See definition of "Restricted-activity day.") The incidence of acute activity-restricting conditions is estimated from the number of such conditions reported as having started in the 2-week period, but a condition which did not result in restricted activity until after the end of the 2-week period in which it had its onset is not included.

Bed-disabling condition.—A condition involving at least 1 day of bed disability is called a bed-disabling condition. (See definition of "Bed-disability day.") The incidence of acute bed-disabling conditions is defined in a manner analogous to the incidence of acute activity-restricting conditions.

Medically attended condition.—A condition is considered to be medically attended if a physician has been consulted about it either at its onset or at any time thereafter. Medical attention includes consultation either in person or by telephone for treatment or advice. Advice from the physician transmitted to the patient through the nurse is counted as well as visits to physicians in clinics or hospitals. If during the course of a single visit the physician is consulted about more than one condition for each of several patients, each condition of each patient is counted as medically attended.

Discussions of a child's condition by the physician and a responsible member of the household are considered as medical attention even if the child was not seen at that time.

For the purpose of this definition, the term "physician" includes doctors of medicine and osteopathic physicians.

Terms Relating to Disability

Disability.—Disability is the general term used to describe any temporary or long-term reduction of a person's activity as a result of an acute or chronic condition.

• Disability days are classified according to whether they are days of restricted activity, bed-days, work-loss days, or school-loss days. All days of bed disability are, by definition, days of restricted activity. The converse form of this statement is, of course, not true. Days lost from work and days lost from school are also days of restricted activity for the working and school-age populations. Hence, restricted activity is the most inclusive term used in describing disability days.

Condition-days of restricted activity, bed disability, etc.—Condition-days of restricted activity, bed disability, and so forth are days of the various forms of disability associated with any one condition. Since any particular day of disability may be associated with more than one condition, the sum of days for all conditions adds to more than the total number of person-days of disability.

Restricted-activity day.—A day of restricted activity is one on which a person substantially reduces the amount of activity normal for that day because of a specific illness or injury. The type of reduction varies with the age and occupation of the individual as well as with the day of the week or season of the year. Restricted activity covers the range from substantial reduction to complete inactivity for the entire day.

Bed-disability day.—A day of bed disability is one on which a person stays in bed for all or most of the day because of a specific illness or injury. It is considered to be a day only if the period of bed disability includes more than half of the daylight hours. All hospital days for inpatients are considered to be days of bed disability even if the patient was not actually in bed at the hospital.

Work-loss day.—A day lost from work is a normal working day on which a person did not work at his job or business because of a specific illness or injury. If the person's regular work day is less than a whole day and the entire work day was lost, it would be counted as a whole work day lost. The number of days lost from work is determined only for persons 17 years of age or over who reported that at any time during the 2-week period covered by the interview they either worked at, or had a job or business. (See definition of "Currently employed persons.")

School-loss day.—A day lost from school is a normal school day on which a child did not attend school because of a specific illness or injury. The number of days lost from school is determined only for children 6-16 years of age.

Demographic Terms

Age.—The age recorded for each person is the age at last birthday. Age is recorded in single years and grouped in a variety of distributions depending upon the purpose of the table.

Quarter.—The quarters used by the National Health Survey are actually 13-week periods rather than 3 calendar months. Since each 13-week period begins on a Monday and ends on a Sunday, the actual dates of the beginning and end of each 13-week period may overlap into another calendar quarter. Therefore, the time periods in the table headings are the approximate rather than the precise periods during which the interviewing was conducted.

Currently employed persons.—Currently employed persons are all persons 17 years of age or over who reported that at any time during the 2-week period covered by the interview they either worked at, or had a job or business. Current employment includes paid work as an employee of someone else, self-employment in business, farming, or professional practice, and unpaid work in a family business or farm. Persons who were temporarily absent from their job or business because of a temporary illness, vacation, strike, or bad weather are considered as currently employed if they expected to work as soon as the particular event causing their absence no longer existed.

Free-lance workers are considered as having a job if they had a definite arrangement with one or more employees to work for pay according to a weekly or monthly schedule, either full-time or part-time. Excluded from the currently employed population are such persons who have no definite employment schedule but who work only when their services are needed.

Also excluded from the currently employed population are (1) persons who were not working, even though having a job or business, but were on layoff or looking for work, (2) persons receiving revenue from an enterprise in whose operation they did not participate, (3) persons doing housework or charity work for which they received no pay, and (4) seasonal workers during the unemployment season.

The number of currently employed persons estimated by the National Health Survey (NHS) will differ from the estimates prepared by the Current Population Survey (CPS), Bureau of the Census, for several reasons. In addition to sampling variability they include three primary conceptual differences, namely: (1) NHS estimates are for persons 17 years of age or over; CPS estimates are for persons 14 years of age or over. (2) NHS uses a 2-week-reference period while CPS uses a 1-week-reference period. (3) NHS is a continuing

survey with separate samples taken weekly, while CPS is a monthly sample taken for the survey week which includes the 12th of the month.

Residence.—The place of residence of a member of the civilian, noninstitutional population is classified as inside a standard metropolitan statistical area (SMSA) or outside an SMSA, according to farm or nonfarm residence.

Standard metropolitan statistical areas.—The definitions and titles of SMSA are established by the U.S. Bureau of the Budget with the advice of the Federal Committee on Standard Metropolitan Statistical Areas. There were 212 SMSA's, as defined for the 1960 Decennial Census, for which data may be provided for places of residence in the Health Interview Survey.

The definition of an individual SMSA involves two considerations: first, a city or cities of specific population which constitute the central city and identify the county in which it is located as the central county; and, second, economic and social relationships with contiguous counties except in New England which are metropolitan in character, that the periphery of the specific metropolitan area may be determined. SMSA's are not limited by State boundaries.

Farm and nonfarm residence.—The population residing outside SMSA is subdivided into the farm population, which comprises all non-SMSA residents living on farms, and the nonfarm population, which comprises the remaining non-SMSA population. The farm population includes persons living on places of 10 or more acres from which sales of farm products amounted to \$50 or more during the preceding 12 months or on places of less than 10 acres from which sales of farm products amounted to \$250 or more during the preceding 12 months. Other persons living in non-SMSA territory were classified as nonfarm if their household paid rent for the home but their rent did not include any land used for farming.

Sales of farm products refer to the gross receipts from the sale of field crops, vegetables, fruits, nuts, livestock and livestock products (milk, wool, etc.), poultry and poultry products, and nursery and forest products produced on the place and sold any time during the preceding 12 months.

Region.—For the purpose of classifying the population by geographic area, the States are grouped into four regions. These regions, which correspond to those used by the Bureau of the Census, are as follows:

<u>Region</u>	<u>States Included</u>
Northeast-----	Maine, New Hampshire, Vermont, Massachusetts, Rhode Island, Connecticut, New York, New Jersey, Pennsylvania
North Central ---	Michigan, Ohio, Indiana, Illinois, Wisconsin, Minnesota, Iowa, Missouri, North Dakota, South Dakota, Nebraska, Kansas

South-----	Delaware, Maryland, District of Columbia, Virginia, West Virginia, North Carolina, South Carolina, Georgia, Florida, Kentucky, Tennessee, Alabama, Mississippi, Arkansas, Louisiana, Oklahoma, Texas
West-----	Montana, Idaho, Wyoming, Colorado, New Mexico, Arizona, Utah, Nevada, Alaska, Washington, Oregon, California, Hawaii

— ○ ○ ○ —

REPORTS FROM THE NATIONAL CENTER FOR HEALTH STATISTICS
Public Health Service Publication No. 1000

Series 1. Programs and collection procedures

- No. 1. Origin, Program, and Operation of the U.S. National Health Survey. 35 cents.
- No. 2. Health Survey Procedure: Concepts, Questionnaire Development, and Definitions in the Health Interview Survey. 45 cents.
- No. 3. Development and Maintenance of a National Inventory of Hospitals and Institutions. 25 cents.

Series 2. Data evaluation and methods research

- No. 1. Comparison of Two-Vision Testing Devices. 30 cents.
- No. 2. Measurement of Personal Health Expenditures. 45 cents.
- No. 3. The One-Hour Glucose Tolerance Test. 30 cents.
- No. 4. Comparison of Two Methods of Constructing Abridged Life Tables. 15 cents.

Series 3. Analytical studies

- No. 1. The Change in Mortality Trend in the United States. 35 cents.
- No. 2. Recent Mortality Trends in Chile. 30 cents.

Series 4. Documents and committee reports

No reports to date.

Series 10. Data From the Health Interview Survey

- No. 1. Acute Conditions, Incidence and Associated Disability, United States, July 1961-June 1962. 40 cents.
- No. 2. Family Income in Relation to Selected Health Characteristics, United States. 40 cents.
- No. 3. Length of Convalescence After Surgery, United States, July 1960-June 1961. 35 cents.
- No. 4. Disability Days, United States, July 1961-June 1962. 40 cents.
- No. 5. Current Estimates From the Health Interview Survey, United States, July 1962-June 1963. 35 cents.
- No. 6. Impairments Due to Injury, by Class and Type of Accident, United States, July 1959-June 1961. 25 cents.
- No. 7. Disability Among Persons in the Labor Force, by Employment Status, United States, July 1961-June 1962. 40 cents.
- No. 8. Types of Injuries, Incidence and Associated Disability, United States, July 1957-June 1961. 35 cents.
- No. 9. Medical Care, Health Status, and Family Income, United States. 55 cents.
- No. 10. Acute Conditions, Incidence and Associated Disability, United States, July 1962-June 1963. 45 cents.
- No. 11. Health Insurance Coverage, United States, July 1962-June 1963. 35 cents.
- No. 12. Bed Disability Among the Chronically Limited, United States, July 1957-June 1961. 45 cents.
- No. 13. Current Estimates From the Health Interview Survey, United States, July 1963-June 1964. 40 cents.
- No. 14. Illness, Disability, and Hospitalization Among Veterans, United States, July 1957-June 1961.
- No. 15. Acute Conditions, Incidence and Associated Disability, United States, July 1963-June 1964.
- No. 16. Health Insurance, Type of Insuring Organization and Multiple Coverage, United States, July 1962-June 1963.

Series 11. Data From the Health Examination Survey

- No. 1. Cycle I of the Health Examination Survey: Sample and Response, United States, 1960-1962. 30 cents.
- No. 2. Glucose Tolerance of Adults, United States, 1960-1962. 25 cents.
- No. 3. Binocular Visual Acuity of Adults, United States, 1960-1962. 25 cents.
- No. 4. Blood Pressure of Adults, by Age and Sex, United States, 1960-1962. 35 cents.
- No. 5. Blood Pressure of Adults, by Race and Region, United States, 1960-1962. 25 cents.
- No. 6. Heart Disease in Adults, United States, 1960-1962. 35 cents.
- No. 7. Selected Dental Findings in Adults, United States, 1960-1962. 30 cents.

Series 12. Data From the Health Records Survey

No reports to date.

Series 20. Data on mortality

No reports to date.

Series 21. Data on natality

- No. 1. Natality Statistics Analysis, United States, 1962. 45 cents.

Series 22. Data on marriage and divorce

No reports to date.

Series 23. Data from the program of sample surveys related to vital records

No reports to date.

