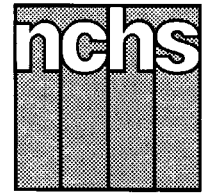


# Monthly Vital Statistics Report



Provisional Data From the CENTERS FOR DISEASE CONTROL AND PREVENTION/National Center for Health Statistics

## Births, Marriages, Divorces, and Deaths for November 1997

### Births

According to provisional reports, an estimated 302,000 births occurred in the United States during November 1997, compared with 313,000 in November 1996. The birth rate, 13.7 live births per 1,000 population, was 4 percent lower than the rate of 14.3 for November 1996. The fertility rate, 61.4 live births per 1,000 women 15–44 years, was 4 percent lower than the comparable rate for November 1996 (63.9). The seasonally adjusted fertility rate (63.4) was also 4 percent lower than the comparable rate for November 1996 (66.0).

During the first 11 months of 1997, an estimated 3,535,000 births occurred, a

2-percent decrease from the 3,597,000 reported for the first 11 months of 1996. The birth rate during this period declined by 3 percent from 14.8 in 1996 to 14.4 in 1997.

An estimated 3,837,000 live births occurred in the 12-month period ending with November 1997, a 2-percent decrease from the 3,897,000 births reported for the same period a year earlier. The birth rate of 14.4 was 2 percent lower than the rate of 14.7 for the preceding 12-month period. The fertility rate for the most recent 12-month period was 64.3, 2 percent lower than the rate for the 12 months ending with November 1996. These lower rates continued the generally downward trend observed since early 1991.

### Natural increase

As a result of natural increase, the excess of births over deaths, an estimated 124,000 people were added to the population during November 1997 at an annual rate of 5.7 persons per 1,000 population.

For the 12-month period ending with November 1997, 1,548,000 persons were added to the population. This represented a rate of natural increase of 5.8, 3 percent lower than the rate for the preceding 12-month period (6.0). This decline in the rate of natural increase was due to a larger decrease in the birth rate than in the death rate.

### Provisional Vital Statistics for the United States

[Rates for infant deaths are deaths under 1 year per 1,000 live births; fertility rates are live births per 1,000 women aged 15–44 years; all other rates are per 1,000 total population. Data are subject to monthly reporting variation; see [Technical notes](#)]

Item	November				January–November				12 months ending with November				
	Number		Rate		Number		Rate		Number		Rate		
	1997	1996	1997	1996	1997	1996	1997	1996	1997	1996	1997	1996	1995
Live births . . . . .	302,000	313,000	13.7	14.3	3,535,000	3,597,000	14.4	14.8	3,837,000	3,897,000	14.4	14.7	14.9
Fertility rate . . . . .	...	...	61.4	63.9	...	...	64.7	66.0	...	...	64.3	65.4	65.7
Deaths . . . . .	178,000	191,000	8.0	8.8	2,089,000	2,111,000	8.5	8.7	2,289,000	2,308,000	8.6	8.7	8.8
Infant deaths . . . . .	2,000	2,300	6.6	7.2	24,800	25,800	7.0	7.3	27,000	28,200	7.1	7.3	7.6
Natural increase . . . . .	124,000	122,000	5.7	5.5	1,446,000	1,486,000	5.9	6.1	1,548,000	1,589,000	5.8	6.0	6.1
Marriages . . . . .	151,000	171,000	6.8	7.9	2,207,000	2,161,000	9.1	9.0	2,390,000	2,330,000	8.9	8.8	8.9
Divorces . . . . .	86,000	94,000	3.9	4.3	1,052,000	1,056,000	4.3	4.4	1,146,000	1,148,000	4.3	4.3	4.5
Population base (in millions) . . . . .	...	...	268.6	266.1	...	...	...	...	...	...	267.4	265.0	262.6

... Category not applicable.

NOTES: Figures include revisions received from the States. Twelve-month figures for the current year reflect revisions received for previous months, and figures for earlier years may differ from those previously published.



U.S. DEPARTMENT OF HEALTH AND HUMAN SERVICES  
Centers for Disease Control and Prevention  
National Center for Health Statistics



### Marriages

An estimated 151,000 marriages were reported in November 1997, yielding a current monthly marriage rate of 6.8 marriages per 1,000 U.S. population.

The number of couples who married in the first 11 months of 1997 (2,207,000) was 2 percent higher than the number who married in the January–November period in 1996 (2,161,000). The marriage rate for the 11-month period in 1997 (9.1) was 1 percent higher than the rate for the same period in 1996 (9.0).

Marriages occurring during the 12-month period ending with November 1997 numbered 2,390,000, 3 percent more than for the comparable period a year earlier (2,330,000). The marriage rate for the current 12-month period (8.9) was 1 percent higher than the rate for the period ending with November 1996 (8.8).

### Divorces

An estimated 86,000 divorces were granted in November 1997, yielding a current monthly divorce rate of 3.9 divorces per 1,000 U.S. population.

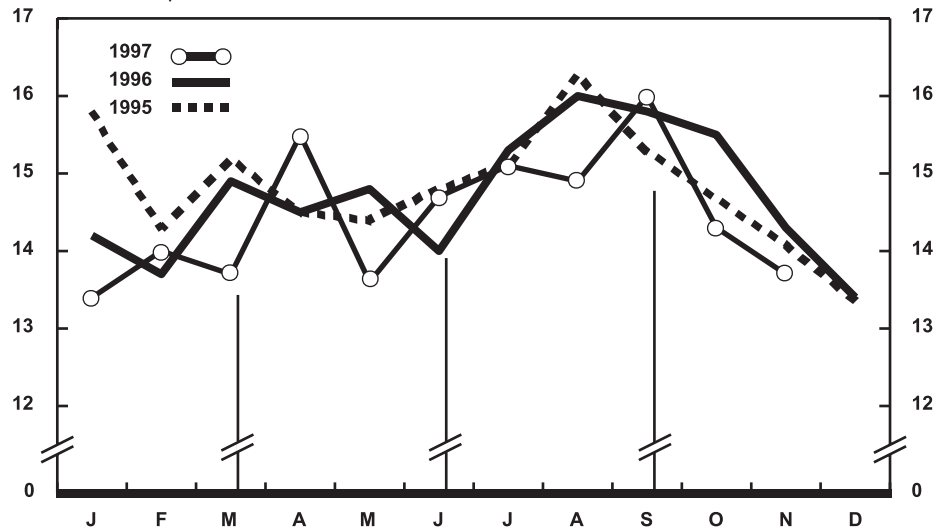
Approximately 1,052,000 divorces were granted during January–November 1997, a slight decrease from the number granted for the same period in 1996 (1,056,000). The divorce rate for the 11-month period was 4.3 in 1997, 2 percent lower than in 1996 (4.4).

An estimated 1,146,000 couples divorced during the 12-month period ending with November 1997, a decline of less than 1 percent from the number of couples that divorced during the same period a year earlier (1,148,000). The divorce rate per 1,000 population for the current 12-month period was the same as the rate for the comparable period a year earlier (4.3).

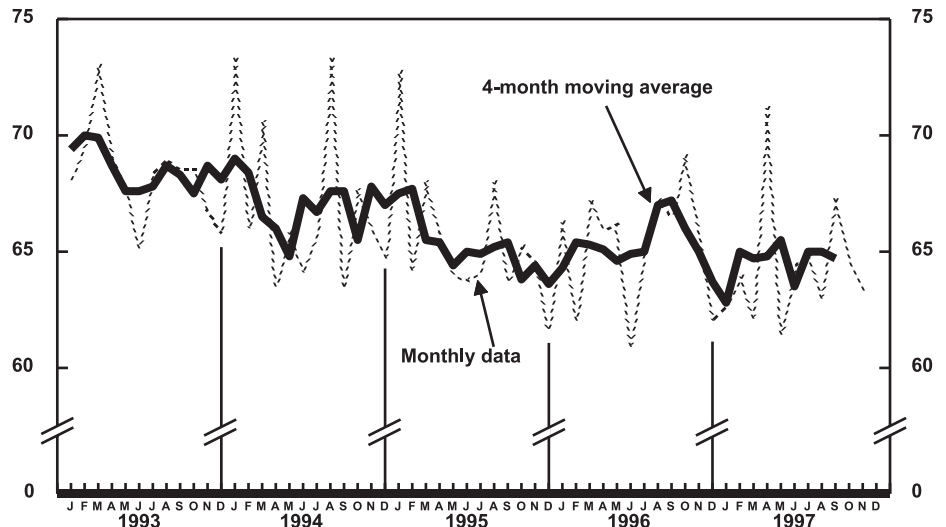
### Deaths

For November 1997 there were an estimated 178,000 deaths in the United States, yielding a monthly death rate of 8.0 deaths per 1,000 population. Among the 178,000 deaths for November 1997 were 2,000 deaths at ages under 1 year.

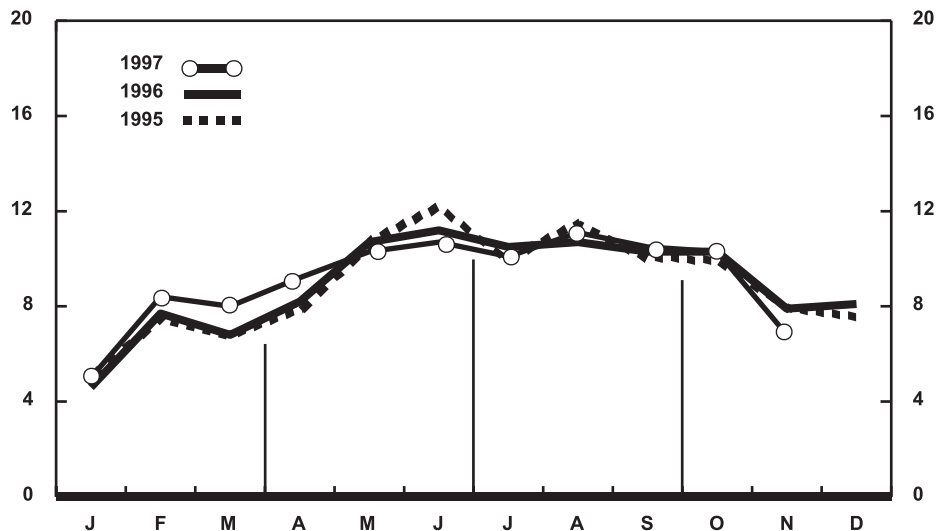
According to provisional statistics, there were 2,089,000 deaths during the first 11 months of 1997, 1 percent fewer



Provisional birth rates per 1,000 population by month: United States, 1995-97



Provisional seasonally adjusted fertility rates per 1,000 women aged 15-44 years: United States, 1993-97



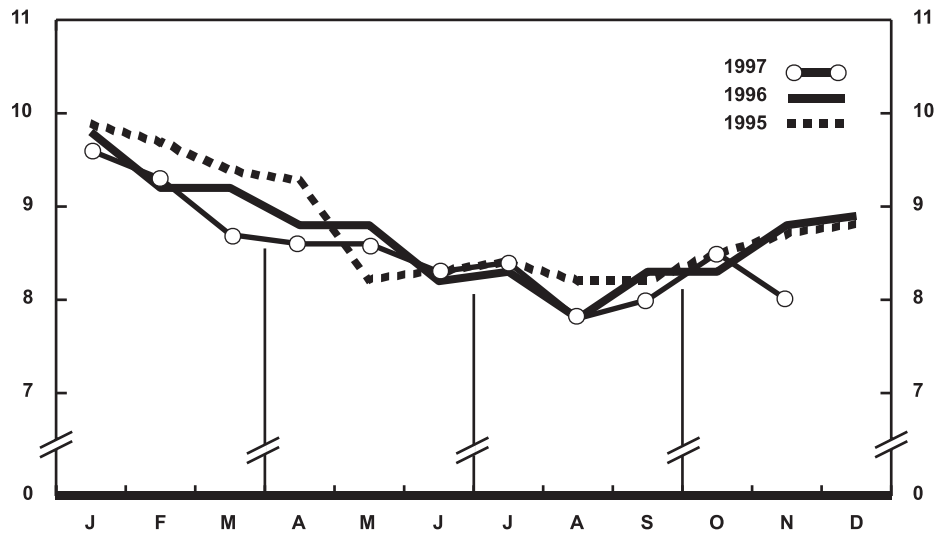
Provisional marriage rates per 1,000 population by month: United States, 1995-97

than the number estimated for January–November 1996 (2,111,000). The death rate, 8.5 per 1,000 population, was 2 percent lower than the rate for January–November 1996 (8.7). Among the 2,089,000 deaths for January–November 1997 were 24,800 deaths at ages under 1 year, yielding an infant mortality rate of 7.0 per 1,000 live births. This rate was 4 percent lower than the rate of 7.3 for the first 11 months of 1996.

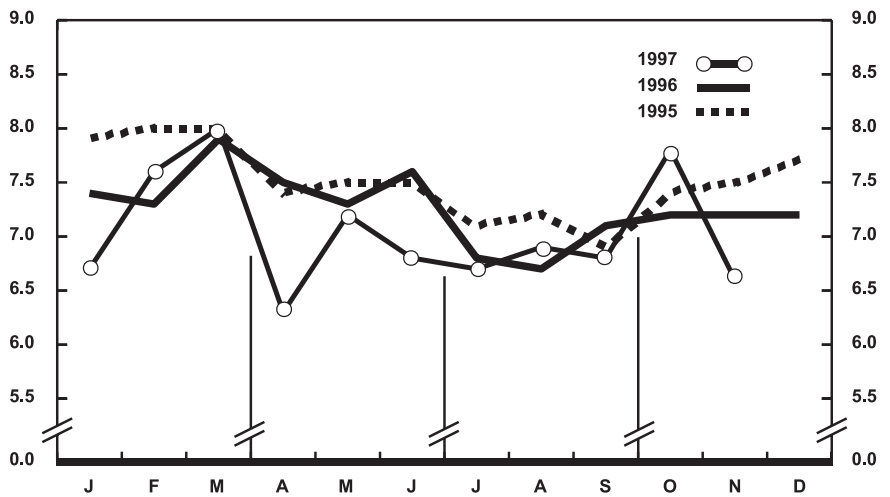
The death rate for the 12 months ending with November 1997 was 8.6 deaths per 1,000 population, 1 percent lower than the rate for the comparable 12-month period a year earlier (8.7). The infant mortality rate for this 12-month period was 7.1 per 1,000 live births, 3 percent lower than the rate of 7.3 for the 12 months ending with November 1996.

**Current Mortality Sample, 12 months ending with October 1997**—The provisional death rate for the 12 months ending with October 1997 was 861.9 per 100,000 population, 1 percent lower than the rate of 870.3 for the 12-month period ending October 1996. The provisional age-adjusted death rate for the 12-month period ending with October 1997 was 479.3 per 100,000 U.S. standard population, 3 percent lower than the rate of 493.0 for the 12-month period ending with October 1996. The age-adjusted death rates control for changes and variations in the age composition of the population; therefore, they are better indicators than crude rates for showing changes in mortality risk over time and for showing differences between race-sex groups within the population. Among the race-sex groups, the estimated age-adjusted death rates decreased for white males, black males, and white females. By age the death rate for the total population decreased for the age groups 1–4 years and 15–24 years through 75–84 years.

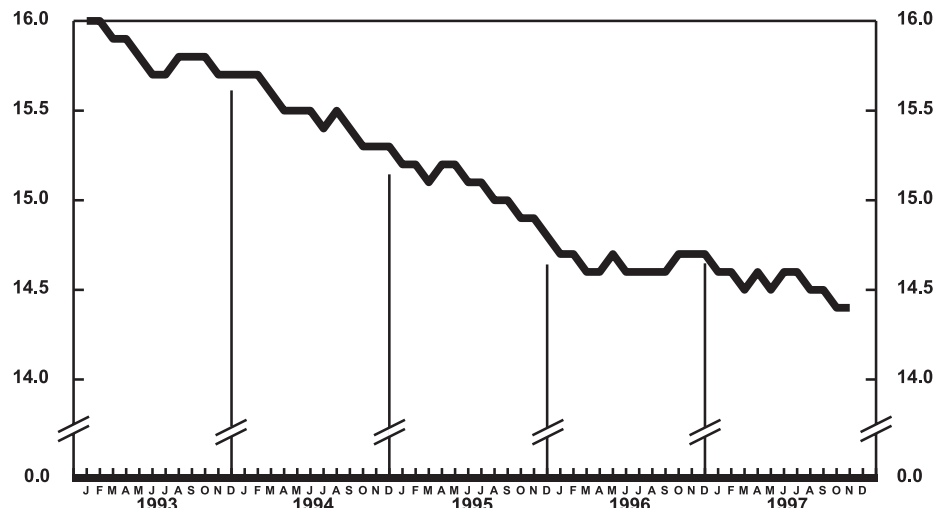
Among the major causes of death, the estimated death rate decreased between the two successive 12-month periods for Diseases of heart, Human immunodeficiency virus infection, and Homicide and legal intervention. The decrease for Homicide and legal intervention was largely due to the decline in the rate for homicide by firearms. The death rate increased between the two successive 12-month periods for Pneumonia and influenza.



Provisional death rates per 1,000 population by month: United States, 1995–97



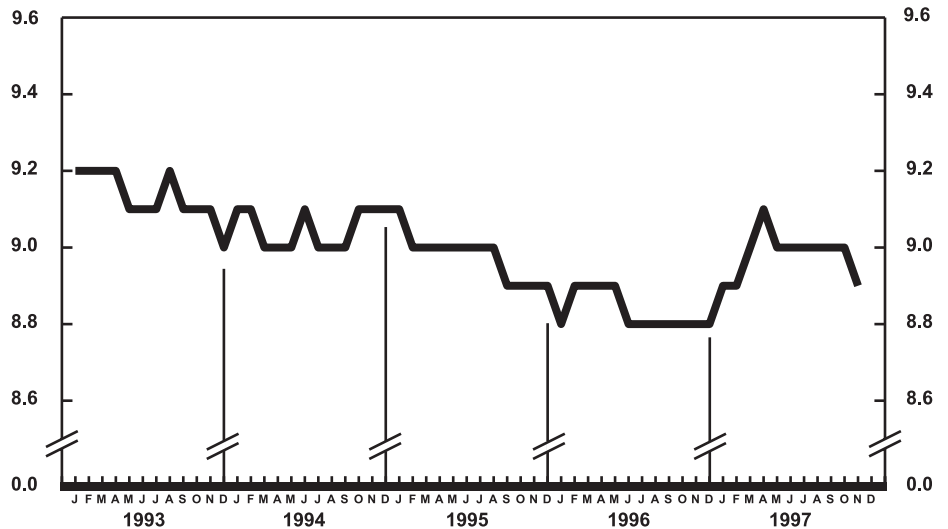
Provisional infant mortality rates per 1,000 live births by month: United States, 1995–97



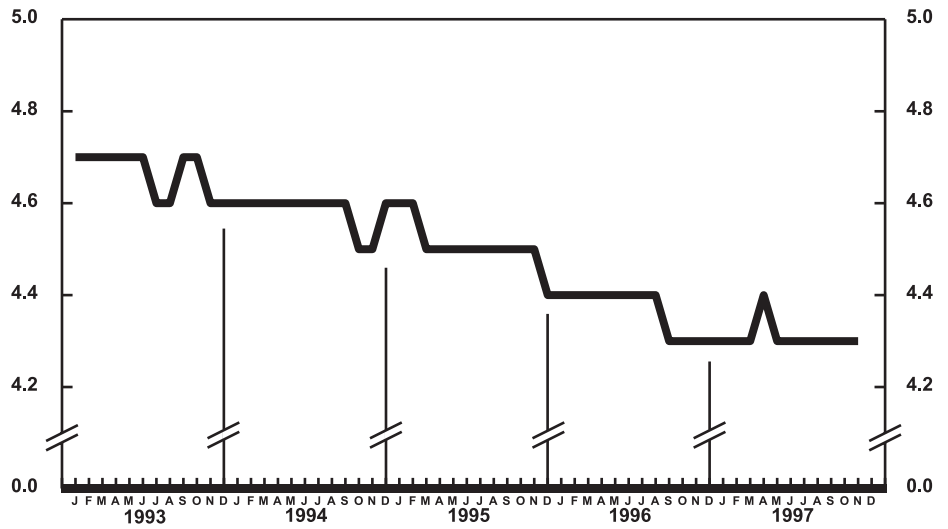
Provisional birth rates per 1,000 population for successive 12-month periods ending with month indicated: United States, 1993–97

The death rate for injury by firearms for the 12 months ending with October 1997 was 12.0 per 100,000 population, 9 percent lower than the rate of 13.2 for the comparable 12-month period a year earlier.

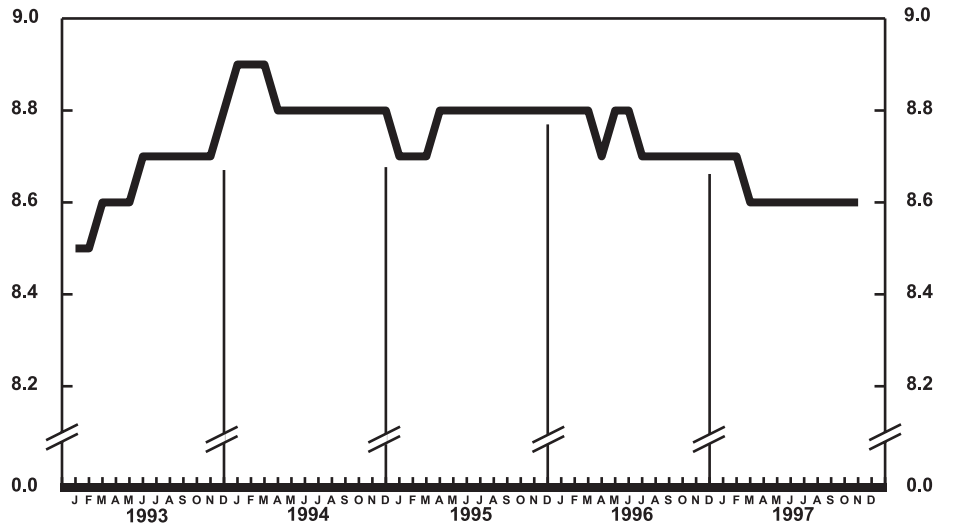
The infant mortality rate for the 12 months ending with October 1997 was 710.6 per 100,000 live births, 3 percent lower than the rate of 730.7 for the same 12-month period a year earlier. For infants under 28 days of age, the 12-month rate ending October 1997 was 459.0 compared with a rate of 480.4 for the 12-month period a year earlier. The infant mortality rate for infants aged 28 days–11 months was 251.5 compared with a rate of 250.4 for the 12-month period ending October 1996. The changes in the mortality rates for infants under 28 days of age and for infants aged 28 days–11 months were not statistically significant. Among causes of infant death, the infant mortality rate for Sudden infant death syndrome decreased between the two successive 12-month periods.



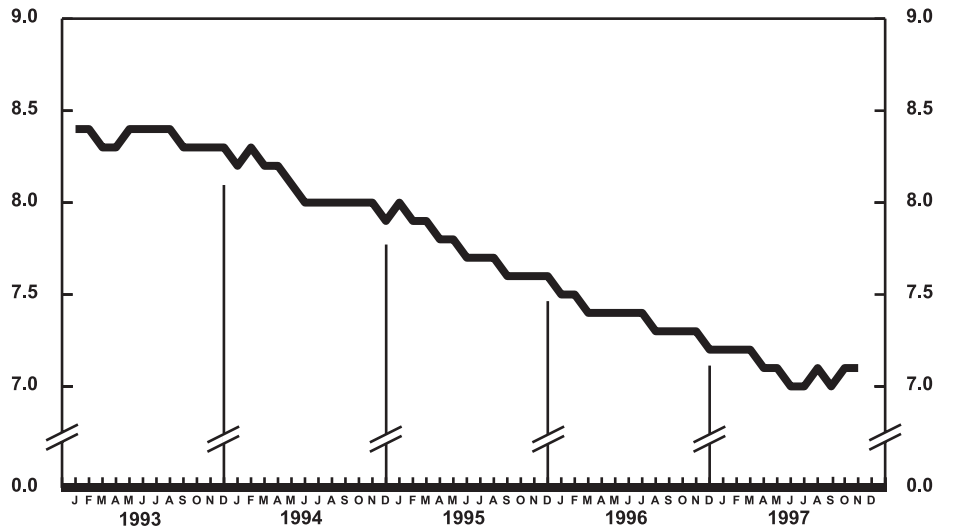
Provisional marriage rates per 1,000 population for successive 12-month periods ending with month indicated: United States, 1993–97



Provisional divorce rates per 1,000 population for successive 12-month periods ending with month indicated: United States, 1993–97



Provisional death rates per 1,000 population for successive 12-month periods ending with month indicated: United States, 1993-97



Provisional infant mortality rates per 1,000 live births for successive 12-month periods ending with month indicated: United States, 1993-97

**Table 1. Provisional number of live births, marriages, divorces, deaths, and infant deaths and rates, by month: United States, January 1996–November 1997**

[Data are provisional and are subject to monthly reporting variation; see [Technical notes](#)]

Period	Live births				Marriages		Divorces		Deaths		Infant deaths	
	Number	Rate per 1,000 population	Rate per 1,000 women aged 15–44 years		Number	Rate per 1,000 population	Number	Rate per 1,000 population	Number	Rate per 1,000 population	Number	Rate per 1,000 live births
			Unadjusted	Seasonally adjusted <sup>1</sup>								
<b>1996:</b>												
January	318,000	14.2	63.2	66.3	100,000	4.6	94,000	4.2	220,000	9.8	2,400	7.4
February	286,000	13.7	60.7	62.0	155,000	7.7	85,000	4.1	193,000	9.2	2,200	7.3
March	334,000	14.9	66.3	67.3	147,000	8.2	93,000	4.2	206,000	9.2	2,600	7.9
April	314,000	14.5	64.3	65.9	172,000	8.2	95,000	4.4	192,000	8.8	2,300	7.5
May	332,000	14.8	65.7	66.2	241,000	10.7	103,000	4.6	198,000	8.8	2,400	7.3
June	304,000	14.0	62.2	61.0	242,000	11.2	103,000	4.8	179,000	8.2	2,300	7.6
July	343,000	15.3	67.9	65.2	235,000	10.5	96,000	4.3	187,000	8.3	2,300	6.8
August	360,000	16.0	71.3	67.3	239,000	10.7	101,000	4.5	176,000	7.8	2,200	6.7
September	345,000	15.8	70.6	66.5	225,000	10.3	92,000	4.2	182,000	8.3	2,400	7.1
October	348,000	15.5	68.9	69.2	231,000	10.3	99,000	4.4	188,000	8.3	2,500	7.2
November	313,000	14.3	63.9	66.0	171,000	7.9	94,000	4.3	191,000	8.8	2,300	7.2
December	302,000	13.4	59.8	62.1	184,000	8.1	94,000	4.2	200,000	8.9	2,300	7.2
<b>1997:</b>												
January	303,000	13.4	59.8	62.7	108,000	5.0	93,000	4.1	218,000	9.6	2,100	6.7
February	287,000	14.0	62.7	63.9	165,000	8.4	86,000	4.2	191,000	9.3	2,200	7.6
March	311,000	13.7	61.4	62.2	174,000	8.0	94,000	4.2	197,000	8.7	2,500	8.0
April	340,000	15.5	69.4	71.2	193,000	9.2	106,000	4.8	189,000	8.6	2,100	6.3
May	309,000	13.6	61.0	61.4	234,000	10.3	98,000	4.3	195,000	8.6	2,300	7.2
June	323,000	14.7	65.7	64.4	235,000	10.7	99,000	4.5	182,000	8.3	2,200	6.8
July	343,000	15.1	67.6	64.9	228,000	10.1	99,000	4.3	192,000	8.4	2,300	6.7
August	339,000	14.9	66.9	63.1	252,000	11.1	93,000	4.1	178,000	7.8	2,200	6.9
September	351,000	16.0	71.6	67.4	231,000	10.5	96,000	4.4	176,000	8.0	2,300	6.8
October	327,000	14.3	64.5	64.7	235,000	10.3	101,000	4.4	193,000	8.5	2,600	7.8
November	302,000	13.7	61.4	63.4	151,000	6.8	86,000	3.9	178,000	8.0	2,000	6.6

<sup>1</sup>The method of seasonal adjustment, developed by the U.S. Bureau of the Census, is described in *The X-11 Variant of the Census Method II Seasonal Adjustment Program*, Technical Paper No. 15 (1967 revision).

NOTE: Figures include all revisions received from the States and, therefore, may differ from those previously published.

**Table 2. Provisional number of live births and deaths: Each division and State, November 1996 and 1997, and cumulative figures, 1995–97**

[Data are estimates by State of residence; see [Technical notes](#)]

Area	Live births					Deaths				
	November		January–November			November		January–November		
	1997	1996	1997	1996	1995	1997	1996	1997	1996	1995
New England	12,504	10,442	162,149	160,435	167,980	9,085	9,760	107,471	106,900	109,642
Maine	946	943	12,449	12,551	13,053	840	930	10,204	10,024	10,944
New Hampshire	895	1,115	12,982	13,041	13,739	639	752	8,621	8,313	8,269
Vermont	485	505	6,135	6,256	6,295	451	338	4,800	4,518	4,618
Massachusetts	6,016	3,311	80,126	76,500	80,558	4,156	4,456	48,685	49,457	51,251
Rhode Island	953	923	11,264	11,459	11,659	874	850	8,888	8,545	8,697
Connecticut	3,209	3,645	39,193	40,628	42,676	2,125	2,434	26,273	26,043	25,863
Middle Atlantic	42,562	38,958	487,443	483,565	493,045	28,021	29,049	329,497	332,505	339,814
New York	24,738	22,274	263,418	248,965	244,089	11,748	11,961	148,141	149,223	154,687
New Jersey	6,343	8,276	92,565	97,224	107,685	5,911	6,227	64,198	66,008	68,357
Pennsylvania	11,481	8,408	131,460	137,376	141,271	10,861	10,861	117,158	117,274	116,760
East North Central	45,033	49,921	550,888	575,694	574,453	30,346	33,148	349,933	357,284	360,359
Ohio	12,018	12,650	138,776	141,434	143,004	8,477	9,721	96,005	95,363	96,425
Indiana	4,490	7,194	63,156	75,813	75,534	3,645	4,244	43,741	49,708	47,742
Illinois	14,624	15,105	165,062	169,525	170,609	8,611	8,836	93,234	95,457	98,837
Michigan	9,239	9,987	123,057	127,301	123,216	6,223	7,020	75,738	75,929	76,546
Wisconsin	4,662	4,985	60,837	61,621	62,090	3,390	3,327	41,215	40,827	40,809
West North Central	21,458	17,755	235,656	231,932	234,340	14,544	12,816	157,389	152,515	154,150
Minnesota	4,989	4,788	59,694	58,688	58,053	3,232	2,969	34,096	33,433	33,831
Iowa	3,285	2,546	33,778	31,547	31,604	2,356	1,840	25,457	23,662	22,901
Missouri	7,410	4,923	69,140	67,890	69,459	4,998	4,031	50,383	48,709	50,230
North Dakota	633	619	7,689	7,723	7,937	430	479	5,520	5,313	5,499
South Dakota	673	712	9,238	9,149	9,918	474	504	6,375	5,804	6,367
Nebraska	1,957	1,616	21,401	21,315	21,254	1,351	1,208	13,803	13,809	13,831
Kansas	2,511	2,551	34,716	35,620	36,115	1,703	1,785	21,755	21,785	21,491
South Atlantic	52,388	54,494	607,313	607,419	601,585	34,055	34,527	401,320	402,070	400,057
Delaware	884	653	9,288	9,245	9,276	457	513	5,845	5,823	5,600
Maryland	4,518	5,416	60,843	67,014	66,072	2,872	3,229	36,409	38,165	37,541
District of Columbia	655	673	7,623	7,571	8,256	486	509	5,476	5,719	6,059
Virginia	8,064	7,560	81,709	81,848	85,188	4,468	4,323	48,579	47,752	48,345
West Virginia	1,381	1,674	19,232	18,584	19,416	1,460	1,399	19,147	17,356	18,202
North Carolina	8,155	10,352	97,272	99,072	94,033	5,322	5,154	60,360	60,283	59,459
South Carolina	4,012	4,015	47,097	47,082	46,515	3,147	3,071	29,746	31,214	30,136
Georgia	9,246	7,682	108,342	104,107	105,012	3,919	4,411	54,363	54,031	53,234
Florida	15,473	16,469	175,907	172,896	167,817	11,924	11,918	141,395	141,727	141,481
East South Central	17,594	20,146	208,612	209,770	207,567	12,256	13,214	147,129	143,828	145,673
Kentucky	3,854	4,881	48,577	48,850	47,514	2,745	2,849	34,981	34,339	35,461
Tennessee	5,183	6,277	66,969	66,813	69,255	3,849	4,829	48,124	45,948	46,843
Alabama	4,839	5,166	56,099	56,595	56,527	3,425	3,377	39,278	39,125	38,605
Mississippi	3,718	3,822	36,967	37,512	34,271	2,237	2,159	24,746	24,416	24,764
West South Central	40,202	35,702	425,317	424,579	437,355	19,418	16,834	210,748	215,305	216,288
Arkansas	3,225	2,644	33,886	32,821	31,535	2,703	1,958	23,239	23,388	23,671
Louisiana	5,669	5,183	59,214	61,132	61,870	2,670	2,552	34,474	36,810	36,109
Oklahoma	3,957	3,602	43,425	41,826	42,820	2,677	2,697	30,719	30,354	30,016
Texas <sup>1</sup>	27,351	24,273	288,792	288,800	301,130	11,368	9,627	122,316	124,753	126,492
Mountain	19,434	18,877	247,551	235,231	224,595	9,029	9,124	110,081	111,497	105,192
Montana	773	801	9,601	9,973	10,291	618	611	7,070	7,045	6,971
Idaho	1,375	1,326	16,211	17,300	16,269	675	703	8,208	7,911	7,754
Wyoming	397	461	5,851	5,686	5,839	275	296	3,393	3,263	3,400
Colorado	1,911	3,417	47,088	43,863	46,340	2,057	1,928	23,337	23,301	23,067
New Mexico	2,704	2,316	24,064	25,092	24,996	1,051	1,005	11,833	11,483	11,565
Arizona	7,104	5,141	80,335	73,002	65,657	2,378	2,526	33,987	36,374	31,616
Utah	3,161	3,000	40,039	38,020	35,632	920	1,016	10,556	10,207	9,787
Nevada	2,009	2,415	24,362	22,295	19,571	1,055	1,039	11,697	11,913	11,032
Pacific	49,965	65,900	594,943	650,696	655,865	20,820	33,014	275,299	288,862	278,075
Washington	5,705	5,649	72,798	73,879	72,329	2,771	2,010	38,627	36,528	36,668
Oregon	3,520	3,430	40,915	40,984	40,391	2,488	2,230	26,643	25,568	25,781
California <sup>1</sup>	38,674	54,326	456,579	509,642	516,859	14,724	27,909	200,681	217,313	206,480
Alaska	710	896	8,923	9,270	9,436	214	258	2,256	2,230	2,249
Hawaii	1,356	1,599	15,728	16,921	16,850	623	607	7,092	7,223	6,897
Puerto Rico <sup>2</sup>	4,132	5,382	58,764	55,465	55,545	1,482	2,071	23,617	24,716	27,007

<sup>1</sup>Figures include adjustments for varying lengths of reporting periods; see [Technical notes](#).

<sup>2</sup>Data for Puerto Rico are not included in U.S. total figures.

NOTES: Figures include all revisions received from the States. Cumulative figures for the current year reflect revisions received for previous months, and figures for earlier years may differ from those previously published.

**Table 3. Provisional number of marriages and divorces: Each division and State, November 1996 and 1997, and cumulative figures, 1995–97**

[By State of occurrence. Number of events reported; see [Technical notes](#). Divorces include reported annulments]

Area	Marriages					Divorces				
	November		January–November			November		January–November		
	1997	1996	1997	1996	1995	1997	1996	1997	1996	1995
New England	17,068	8,247	184,061	89,831	93,405	2,647	3,462	39,833	36,114	36,386
Maine	---	532	---	9,638	10,370	458	325	3,930	4,551	4,875
New Hampshire	851	1,104	9,334	9,232	8,966	372	609	5,201	4,513	4,582
Vermont	631	582	5,790	5,646	5,760	150	157	2,517	2,388	2,566
Massachusetts	3,639	4,012	39,830	38,034	41,097	662	1,299	14,799	12,126	12,046
Rhode Island	521	581	7,670	7,382	6,905	314	229	2,878	2,987	3,368
Connecticut	1,426	1,436	21,437	19,899	20,307	691	843	10,508	9,549	8,949
Middle Atlantic	23,935	22,079	279,752	248,059	253,516	8,576	10,141	119,106	115,246	110,478
New York <sup>2</sup>	13,032	10,716	156,546	135,143	134,915	4,068	4,546	60,651	56,894	52,032
New Jersey	2,714	5,289	50,711	46,000	48,102	1,469	1,688	23,331	22,818	22,414
Pennsylvania	8,189	6,074	72,495	66,916	70,499	3,039	3,907	35,124	35,534	36,032
East North Central	19,355	23,430	292,485	304,240	310,253	<sup>1</sup> 10,372	<sup>1</sup> 10,907	<sup>1</sup> 129,810	<sup>1</sup> 127,692	<sup>1</sup> 132,678
Ohio	5,477	6,039	77,954	76,422	84,261	3,491	3,547	42,779	39,851	44,412
Indiana	2,905	3,181	29,306	45,430	46,662	---	---	---	---	---
Illinois	5,705	6,359	88,166	83,183	77,485	3,013	3,313	35,983	36,935	35,644
Michigan	3,140	5,507	62,823	64,588	67,037	2,427	2,668	35,257	35,075	36,605
Wisconsin	2,128	2,344	34,236	34,617	34,808	1,441	1,379	15,791	15,831	16,017
West North Central	8,826	10,845	132,491	139,263	137,293	6,137	5,657	66,668	67,942	69,001
Minnesota	1,439	1,760	29,489	31,431	31,182	1,154	1,089	13,731	13,778	14,308
Iowa	1,262	2,807	21,035	22,634	20,972	759	882	9,070	9,139	9,590
Missouri	3,717	2,993	40,784	42,761	42,044	2,285	1,939	23,044	23,818	24,215
North Dakota	401	387	4,164	4,829	4,325	163	189	1,897	2,122	2,026
South Dakota	274	328	6,471	6,299	6,864	177	201	2,475	2,502	2,621
Nebraska	683	964	11,634	11,865	11,495	534	537	5,764	5,640	5,800
Kansas	1,050	1,606	18,914	19,444	20,411	1,065	820	10,687	10,943	10,441
South Atlantic	33,195	33,441	427,049	405,539	410,234	16,830	19,236	213,253	205,583	207,422
Delaware	398	422	5,049	4,895	4,991	245	235	2,757	3,122	3,388
Maryland	2,794	3,200	38,845	38,374	39,299	1,153	1,259	13,894	14,386	13,103
District of Columbia	534	648	3,498	2,478	2,645	99	458	1,000	1,330	1,631
Virginia	5,298	5,096	62,579	60,277	63,166	2,333	2,358	28,218	25,646	26,072
West Virginia	958	857	10,044	10,311	10,529	929	863	8,835	7,120	8,299
North Carolina	4,505	4,789	60,310	56,580	57,188	2,598	2,686	34,013	32,772	34,208
South Carolina	2,585	2,742	39,590	39,324	40,932	1,084	1,177	14,183	14,157	13,608
Georgia	5,099	4,760	57,899	55,967	57,651	2,883	3,194	33,906	33,583	33,843
Florida	11,024	10,927	149,235	137,333	133,833	5,506	7,006	76,447	73,467	73,270
East South Central	12,415	17,177	174,112	177,749	177,094	6,493	7,012	76,005	90,379	88,244
Kentucky	2,968	3,540	42,240	40,313	43,410	2,117	1,428	20,437	19,616	21,084
Tennessee	4,993	7,345	69,175	74,339	75,957	1,792	2,680	21,530	31,769	31,722
Alabama	2,920	4,645	42,289	43,820	38,317	1,678	1,791	21,031	24,272	24,119
Mississippi	1,534	1,647	20,408	19,277	19,410	906	1,113	13,007	14,722	11,817
West South Central	17,909	15,940	260,388	254,358	277,380	<sup>1</sup> 2,371	<sup>1</sup> 2,957	<sup>1</sup> 30,693	<sup>1</sup> 31,292	<sup>1</sup> 126,563
Arkansas	3,000	3,207	32,219	32,607	33,036	900	1,526	13,200	13,639	14,636
Louisiana	2,512	2,298	32,431	33,884	37,132	---	---	---	---	---
Oklahoma	1,683	1,837	25,451	24,258	26,061	1,471	1,431	17,493	17,653	20,191
Texas <sup>3</sup>	10,714	8,598	170,287	163,609	181,151	---	---	---	---	91,736
Mountain	15,671	17,914	228,978	257,917	251,341	<sup>1</sup> 4,757	<sup>1</sup> 6,910	<sup>1</sup> 53,656	<sup>1</sup> 69,423	<sup>1</sup> 69,045
Montana	250	268	6,181	6,187	6,292	287	295	3,622	3,889	3,816
Idaho	1,478	1,092	14,331	14,004	14,528	589	633	6,525	6,416	6,223
Wyoming	269	292	4,544	4,561	4,605	232	221	2,691	2,833	2,953
Colorado	1,510	2,165	30,883	32,099	31,934	---	---	---	---	---
New Mexico <sup>4,5</sup>	863	1,015	14,683	14,703	13,926	573	921	8,551	10,106	10,498
Arizona <sup>2</sup>	2,950	2,654	36,425	36,197	35,663	2,368	2,282	24,006	23,917	25,418
Utah	1,040	1,097	19,151	20,491	20,395	708	1,028	8,261	8,401	8,232
Nevada	7,311	9,331	102,780	129,675	123,998	---	1,530	---	13,861	11,905
Pacific	19,366	30,653	305,043	287,262	266,953	<sup>1</sup> 5,038	<sup>1</sup> 5,253	<sup>1</sup> 46,824	<sup>1</sup> 46,009	<sup>1</sup> 49,246
Washington	3,041	3,606	40,402	36,500	39,444	2,698	2,860	26,122	25,015	27,884
Oregon	1,570	1,618	24,574	23,717	24,228	1,712	1,601	13,603	14,031	13,713
California	12,829	23,354	216,921	204,166	180,906	---	---	---	---	---
Alaska	312	441	4,797	4,763	5,088	241	252	2,724	2,509	2,747
Hawaii	1,614	1,634	18,349	18,116	17,287	387	540	4,375	4,454	4,902
Puerto Rico <sup>6</sup>	1,538	1,997	24,524	25,772	28,116	---	---	---	---	---

--- Data not available.

<sup>1</sup>Excludes figures for State(s) shown below as not available.

<sup>2</sup>Figures for marriages are marriage licenses issued for some counties.

<sup>3</sup>Figures include adjustments for varying lengths of reporting periods; see [Technical notes](#).

<sup>4</sup>Figures for marriages are marriage licenses issued.

<sup>5</sup>Figures for divorces include estimates for some counties.

<sup>6</sup>Data for Puerto Rico are not included in U.S. total figures.

NOTES: Figures include all revisions received from the States. Cumulative figures for the current year reflect revisions received for previous months, and figures for earlier years may differ from those previously published.



**Table 4. Provisional number of deaths under 1 year and infant mortality rates: Each division and State, 12 months ending with November 1996 and 1997**

[Data are estimates by State of residence. Figures should be interpreted with caution because of conversion of place of occurrence to place of residence; see [Technical notes](#). Infant mortality rates are deaths under 1 year per 1,000 live births in specified area]

Area	12 months ending with November			
	1997		1996	
	Number	Rate	Number	Rate
New England . . . . .	880	5.1	953	5.6
Maine . . . . .	51	3.7	61	4.5
New Hampshire . . . . .	60	4.3	76	5.3
Vermont . . . . .	45	6.8	54	8.0
Massachusetts . . . . .	345	4.1	412	5.1
Rhode Island . . . . .	78	6.3	69	5.5
Connecticut . . . . .	301	7.1	281	6.5
Middle Atlantic . . . . .	3,569	6.6	3,777	7.2
New York . . . . .	1,783	6.2	1,834	6.8
New Jersey . . . . .	725	6.6	818	7.8
Pennsylvania . . . . .	1,061	7.4	1,125	7.6
East North Central . . . . .	4,567	7.6	4,949	7.9
Ohio . . . . .	1,091	7.3	1,196	7.8
Indiana . . . . .	506	7.2	646	7.6
Illinois . . . . .	1,458	8.1	1,528	8.3
Michigan . . . . .	1,083	8.1	1,074	7.8
Wisconsin . . . . .	429	6.5	505	7.6
West North Central . . . . .	1,725	6.7	1,871	7.4
Minnesota . . . . .	380	5.9	420	6.6
Iowa . . . . .	183	4.9	229	6.3
Missouri . . . . .	571	7.7	579	7.9
North Dakota . . . . .	59	7.1	35	4.1
South Dakota . . . . .	73	7.2	52	5.3
Nebraska . . . . .	190	8.1	204	8.8
Kansas . . . . .	269	6.8	352	9.6
South Atlantic . . . . .	5,331	8.1	5,492	8.3
Delaware . . . . .	85	8.3	75	7.5
Maryland . . . . .	570	8.8	595	8.1
District of Columbia . . . . .	100	12.1	129	15.6
Virginia . . . . .	646	7.3	657	7.6
West Virginia . . . . .	176	8.7	161	8.0
North Carolina . . . . .	1,024	9.8	952	8.9
South Carolina . . . . .	438	8.7	404	8.0
Georgia . . . . .	930	7.8	1,059	9.4
Florida . . . . .	1,362	7.1	1,460	7.6
East South Central . . . . .	2,127	9.3	2,016	8.9
Kentucky . . . . .	429	8.2	400	7.6
Tennessee . . . . .	671	9.1	590	8.3
Alabama . . . . .	558	9.1	627	10.2
Mississippi . . . . .	469	11.5	399	9.9
West South Central . . . . .	3,206	6.9	3,237	7.0
Arkansas . . . . .	300	8.1	302	8.5
Louisiana . . . . .	600	9.3	549	8.2
Oklahoma . . . . .	375	8.0	402	9.0
Texas <sup>1</sup> . . . . .	1,931	6.1	1,984	6.3
Mountain . . . . .	1,726	6.5	2,201	8.7
Montana . . . . .	73	7.0	86	7.9
Idaho . . . . .	112	6.3	136	7.2
Wyoming . . . . .	30	4.7	40	6.5
Colorado . . . . .	393	7.7	360	7.6
New Mexico . . . . .	173	6.6	161	5.9
Arizona . . . . .	537	6.2	1,033	13.6
Utah . . . . .	254	5.9	234	5.7
Nevada . . . . .	154	6.0	151	6.3
Pacific . . . . .	3,854	6.0	4,194	5.9
Washington . . . . .	396	5.0	418	5.2
Oregon . . . . .	260	5.9	235	5.4
California <sup>1</sup> . . . . .	3,033	6.2	3,359	6.0
Alaska . . . . .	62	6.3	78	7.9
Hawaii . . . . .	103	6.0	104	5.6
Puerto Rico <sup>2</sup> . . . . .	575	8.9	595	9.7

<sup>1</sup>Figures include adjustments for varying lengths of reporting periods; see [Technical notes](#).

<sup>2</sup>Data for Puerto Rico are not included in U.S. total figures.

NOTES: Figures include all revisions received from the States. Figures for the current year reflect revisions received for previous months, and figures for earlier years may differ from those previously published.

**Table 5. Provisional number of deaths and death rates, by age, race, and sex, and age-adjusted death rates by race and sex: United States, October 1996 and 1997, cumulative figures 1996 and 1997, and 12 months ending with October 1996 and 1997**

[Data are provisional, estimated from a 10-percent sample of deaths. Age-specific rates on an annual basis per 100,000 population in specified group; age-adjusted rates per 100,000 U.S. standard population; see [Technical notes](#). Because of rounding of estimates, figures may not add to totals. For method of computation and information on standard errors of the estimates, see [Technical notes](#)]

Age, race, and sex	October				January–October				12 months ending with October			
	1997		1996		1997		1996		1997		1996	
	Number	Rate	Number	Rate	Number	Rate	Number	Rate	Number	Rate	Number	Rate
<b>All races, both sexes<sup>1</sup></b>												
All ages . . . . .	193,000	848.5	188,000	832.9	1,911,000	858.5	1,920,000	869.7	2,303,000	861.9	2,304,000	870.3
Under 1 year . . . . .	} 3,710	75.3	3,470	70.5	22,700	<sup>2</sup> 728.5	23,600	<sup>2</sup> 734.4	27,300	<sup>2</sup> 729.9	28,300	<sup>2</sup> 734.3
1–4 years . . . . .					4,470	35.0	5,020	38.6	5,300	34.5	6,050	38.8
5–14 years . . . . .					7,120	22.1	7,440	23.2	8,470	21.9	9,020	23.4
15–24 years . . . . .					3,150	100.9	3,060	100.3	27,170	89.3	28,430	95.0
25–34 years . . . . .	3,640	108.8	3,970	116.5	38,510	116.4	44,060	130.7	46,670	117.4	53,320	131.7
35–44 years . . . . .	7,920	211.3	7,630	207.3	75,100	205.2	80,520	223.8	91,000	207.1	97,780	226.5
45–54 years . . . . .	11,620	403.0	12,460	450.0	119,410	428.2	118,770	442.5	143,450	428.0	141,930	441.8
55–64 years . . . . .	19,220	1,027.0	18,980	1,045.9	191,730	1,058.2	194,800	1,097.0	231,360	1,069.1	233,370	1,096.0
65–74 years . . . . .	38,730	2,468.1	39,060	2,473.2	382,050	2,477.0	397,480	2,551.2	461,690	2,493.2	475,120	2,541.0
75–84 years . . . . .	56,390	5,642.9	52,640	5,397.2	554,660	5,706.0	547,330	5,767.5	666,070	5,711.0	655,740	5,766.3
85 years and over . . . . .	48,900	14,710.2	46,250	14,503.3	487,450	15,181.6	471,450	15,210.2	588,090	15,294.9	567,050	15,272.0
Not stated . . . . .	120	...	20	...	900	...	810	...	1,040	...	950	...
Age-adjusted rate <sup>3</sup> . . . . .	...	471.3	...	473.1	...	477.0	...	493.0	...	479.3	...	493.0
<b>All races, male<sup>1</sup></b>												
All ages . . . . .	97,240	871.3	94,280	857.1	957,520	878.5	970,180	899.9	1,152,510	881.1	1,163,910	900.0
Under 1 year . . . . .	} 2,140	84.9	2,080	82.5	13,030	<sup>2</sup> 815.9	12,910	<sup>2</sup> 786.6	15,610	<sup>2</sup> 817.3	15,640	<sup>2</sup> 791.9
1–4 years . . . . .					2,410	36.8	2,860	43.0	2,800	35.7	3,420	42.9
5–14 years . . . . .					4,180	25.3	4,430	26.9	4,900	24.7	5,390	27.3
15–24 years . . . . .					2,410	150.2	2,350	150.9	20,320	129.9	21,470	140.5
25–34 years . . . . .	2,670	159.6	2,870	168.7	27,380	165.5	31,250	185.7	33,160	166.8	37,910	187.4
35–44 years . . . . .	5,280	283.2	5,070	277.6	50,250	276.0	54,720	306.5	60,840	278.4	66,570	310.8
45–54 years . . . . .	7,320	518.8	7,540	557.4	75,140	550.7	75,060	572.4	90,380	551.0	90,040	573.7
55–64 years . . . . .	11,500	1,289.5	11,840	1,370.7	115,380	1,336.8	117,370	1,389.0	139,270	1,351.2	140,460	1,386.6
65–74 years . . . . .	22,310	3,177.9	21,490	3,051.0	218,210	3,165.8	224,340	3,231.3	262,670	3,174.6	268,950	3,228.7
75–84 years . . . . .	27,790	7,018.5	25,600	6,676.5	269,870	7,025.6	268,730	7,228.8	324,460	7,041.2	321,360	7,215.1
85 years and over . . . . .	15,730	16,419.1	15,440	17,116.6	160,690	17,418.2	156,500	17,913.9	193,490	17,510.4	187,700	17,944.6
Not stated . . . . .	80	...	20	...	650	...	540	...	740	...	630	...
Age-adjusted rate <sup>3</sup> . . . . .	...	598.3	...	599.5	...	603.4	...	627.9	...	605.7	...	628.6
<b>All races, female<sup>1</sup></b>												
All ages . . . . .	96,170	826.6	93,260	809.8	953,780	839.3	949,480	841.0	1,150,270	843.4	1,138,740	840.8
Under 1 year . . . . .	} 1,570	65.3	1,390	57.9	9,710	<sup>2</sup> 635.8	10,650	<sup>2</sup> 681.0	11,650	<sup>2</sup> 638.4	12,690	<sup>2</sup> 673.9
1–4 years . . . . .					2,060	32.9	2,160	33.9	2,510	33.5	2,630	34.5
5–14 years . . . . .					2,940	18.7	3,020	19.2	3,570	18.9	3,630	19.3
15–24 years . . . . .					740	48.8	710	47.6	6,850	46.4	6,950	47.4
25–34 years . . . . .	970	58.0	1,110	65.1	11,120	67.3	12,810	76.0	13,510	68.0	15,400	76.0
35–44 years . . . . .	2,640	140.2	2,560	138.1	24,850	135.0	25,800	142.3	30,150	136.5	31,210	143.5
45–54 years . . . . .	4,300	292.1	4,920	347.4	44,260	310.8	43,710	318.4	53,070	310.1	51,890	315.8
55–64 years . . . . .	7,720	788.0	7,140	750.8	76,350	804.7	77,430	831.7	92,080	812.5	92,910	832.3
65–74 years . . . . .	16,420	1,893.5	17,570	2,008.3	163,840	1,920.6	173,140	2,004.6	199,020	1,942.8	206,170	1,988.5
75–84 years . . . . .	28,600	4,740.8	27,040	4,568.5	284,790	4,844.1	278,590	4,826.5	341,620	4,842.2	334,380	4,833.5
85 years and over . . . . .	33,170	14,023.3	30,820	13,476.8	326,760	14,282.6	314,950	14,149.4	394,600	14,401.5	379,350	14,223.8
Not stated . . . . .	40	...	...	...	250	...	270	...	300	...	320	...
Age-adjusted rate <sup>3</sup> . . . . .	...	363.7	...	367.0	...	370.8	...	380.7	...	373.1	...	380.0
<b>White</b>												
All ages . . . . .	166,250	882.3	160,650	861.8	1,648,250	895.2	1,651,190	902.9	1,984,510	898.1	1,980,530	902.8
Under 1 year . . . . .	} 2,290	58.8	2,420	62.2	14,960	<sup>2</sup> 604.4	15,390	<sup>2</sup> 615.8	17,680	<sup>2</sup> 597.9	18,570	<sup>2</sup> 616.9
1–4 years . . . . .					3,220	31.7	3,390	33.1	3,770	31.0	4,100	33.3
5–14 years . . . . .					5,250	20.6	5,310	20.8	6,270	20.5	6,550	21.4
15–24 years . . . . .					2,260	91.0	2,210	91.0	19,200	79.3	20,060	84.1
25–34 years . . . . .	2,620	96.9	2,770	100.0	27,640	103.1	31,030	113.1	33,180	103.1	37,270	113.1
35–44 years . . . . .	5,990	192.7	5,420	177.1	54,650	179.9	57,930	193.5	66,530	182.4	70,260	195.6
45–54 years . . . . .	8,990	366.8	9,700	410.9	91,760	386.7	90,620	395.6	109,830	385.0	108,430	395.5
55–64 years . . . . .	15,280	948.6	15,110	965.3	154,860	992.7	158,000	1,031.0	187,220	1,004.7	189,360	1,030.5
65–74 years . . . . .	33,260	2,405.9	33,560	2,403.3	329,390	2,421.1	344,810	2,500.1	397,740	2,434.6	412,190	2,489.8
75–84 years . . . . .	50,780	5,617.7	47,170	5,334.4	499,810	5,682.2	491,410	5,711.1	599,210	5,677.0	588,730	5,710.3
85 years and over . . . . .	44,690	14,859.9	42,260	14,554.9	446,950	15,383.8	432,640	15,339.8	539,620	15,506.3	520,270	15,397.2
Not stated . . . . .	80	...	20	...	570	...	590	...	670	...	710	...
Age-adjusted rate <sup>3</sup> . . . . .	...	447.3	...	447.3	...	454.4	...	467.4	...	456.1	...	467.5

See footnotes at end of table.

**Table 5. Provisional number of deaths and death rates, by age, race, and sex, and age-adjusted death rates by race and sex: United States, October 1996 and 1997, cumulative figures 1996 and 1997, and 12 months ending with October 1996 and 1997—Con.**

[Data are provisional, estimated from a 10-percent sample of deaths. Age-specific rates on an annual basis per 100,000 population in specified group; age-adjusted rates per 100,000 U.S. standard population; see [Technical notes](#). Because of rounding of estimates, figures may not add to totals. For method of computation and information on standard errors of the estimates, see [Technical notes](#)]

Age, race, and sex	October				January–October				12 months ending with October			
	1997		1996		1997		1996		1997		1996	
	Number	Rate	Number	Rate	Number	Rate	Number	Rate	Number	Rate	Number	Rate
<b>White male</b>												
All ages	82,690	891.9	79,850	872.6	817,640	902.5	825,960	920.2	983,620	904.7	990,620	920.1
Under 1 year	} 1,380	69.0	1,480	74.2	8,700	<sup>2</sup> 685.7	8,470	<sup>2</sup> 660.7	10,240	<sup>2</sup> 675.5	10,290	<sup>2</sup> 666.0
1–4 years					1,700	32.5	2,060	39.2	1,940	31.1	2,460	39.0
5–14 years					3,040	23.1	3,130	24.0	3,600	22.9	3,880	24.7
15–24 years	1,690	131.6	1,680	134.8	14,010	111.9	14,840	121.2	16,650	110.9	17,920	122.1
25–34 years	1,890	138.2	1,970	141.0	19,750	145.8	22,350	161.5	23,800	146.2	26,920	161.8
35–44 years	4,120	263.7	3,690	240.4	37,480	245.3	39,880	265.5	45,520	248.3	48,490	269.1
45–54 years	5,740	473.3	5,920	507.6	58,000	494.0	57,790	510.7	69,480	492.2	69,480	513.1
55–64 years	9,000	1,159.0	9,440	1,253.0	94,240	1,253.6	95,710	1,298.1	113,880	1,268.4	114,720	1,297.7
65–74 years	19,380	3,107.9	18,540	2,954.0	189,550	3,092.6	195,940	3,163.9	227,890	3,097.2	234,680	3,158.5
75–84 years	25,170	7,001.1	23,030	6,598.0	244,660	7,012.0	242,470	7,166.4	293,850	7,019.8	290,070	7,156.9
85 years and over	14,290	16,642.3	14,080	17,244.3	146,060	17,660.8	142,910	18,091.9	176,260	17,786.1	171,220	18,099.4
Not stated	50	...	20	...	460	...	410	...	520	...	490	...
Age-adjusted rate <sup>3</sup>	...	565.9	...	564.1	...	573.5	...	593.7	...	575.2	...	594.4
<b>White female</b>												
All ages	83,560	873.1	80,790	851.3	830,610	888.0	825,230	886.2	1,000,890	891.7	989,900	886.2
Under 1 year	} 920	48.5	950	50.2	6,270	<sup>2</sup> 518.9	6,920	<sup>2</sup> 569.3	7,440	<sup>2</sup> 516.3	8,280	<sup>2</sup> 565.2
1–4 years					1,520	30.6	1,330	26.6	1,830	30.9	1,640	27.4
5–14 years					2,210	17.8	2,180	17.6	2,670	17.9	2,680	18.0
15–24 years	580	48.3	530	44.9	5,190	44.6	5,220	45.0	6,140	43.8	6,180	44.4
25–34 years	740	55.3	800	58.3	7,890	59.6	8,680	63.8	9,370	58.9	10,350	63.4
35–44 years	1,880	121.6	1,730	113.4	17,170	113.6	18,060	121.0	21,020	115.9	21,770	121.6
45–54 years	3,250	262.5	3,780	316.4	33,760	281.7	32,830	283.1	40,350	280.0	38,940	280.6
55–64 years	6,280	752.7	5,670	698.4	60,620	749.9	62,290	783.4	73,330	759.4	74,640	782.8
65–74 years	13,890	1,830.4	15,020	1,953.6	139,840	1,870.4	148,870	1,958.7	169,850	1,891.6	177,510	1,945.3
75–84 years	25,610	4,704.2	24,140	4,510.3	255,160	4,808.3	248,940	4,768.4	305,370	4,794.6	298,650	4,773.1
85 years and over	30,400	14,147.6	28,180	13,502.7	300,890	14,477.8	289,730	14,270.0	363,360	14,598.6	349,050	14,346.5
Not stated	30	...	—	...	110	...	180	...	150	...	220	...
Age-adjusted rate <sup>3</sup>	...	346.7	...	348.8	...	353.8	...	361.9	...	355.6	...	361.2
<b>Black</b>												
All ages	23,460	810.6	23,790	832.3	228,380	809.2	236,100	844.3	276,530	816.8	283,630	845.7
Under 1 year	} 1,210	158.7	950	123.0	7,010	<sup>2</sup> 1,498.4	7,350	<sup>2</sup> 1,402.2	8,660	<sup>2</sup> 1,535.5	8,870	<sup>2</sup> 1,407.9
1–4 years					1,050	53.5	1,410	68.7	1,270	54.5	1,710	69.5
5–14 years					1,490	29.3	1,670	33.9	1,780	29.3	1,930	32.2
15–24 years	740	156.0	760	163.4	6,700	144.9	7,310	160.2	8,020	144.7	8,610	157.4
25–34 years	830	182.1	1,050	229.4	9,470	211.5	11,650	258.2	11,750	218.4	14,400	265.9
35–44 years	1,700	365.9	1,970	435.5	18,390	406.7	20,470	463.9	22,040	406.6	25,020	473.2
45–54 years	2,270	736.7	2,450	836.5	24,490	825.7	24,800	877.3	29,700	834.5	29,630	875.8
55–64 years	3,410	1,798.8	3,520	1,920.4	32,320	1,762.4	32,590	1,818.0	38,850	1,769.9	38,900	1,808.5
65–74 years	4,710	3,354.9	4,870	3,516.7	45,390	3,312.9	46,190	3,400.2	55,270	3,364.0	55,120	3,385.7
75–84 years	4,810	6,532.2	4,730	6,577.7	46,860	6,533.1	48,570	6,927.8	57,230	6,646.9	58,350	6,946.4
85 years and over	3,740	14,876.8	3,510	14,540.6	34,900	14,357.0	33,860	14,437.7	41,610	14,299.0	40,850	14,589.3
Not stated	40	...	—	...	310	...	220	...	350	...	240	...
Age-adjusted rate <sup>3</sup>	...	696.2	...	732.5	...	700.7	...	741.1	...	708.3	...	742.1
<b>Black male</b>												
All ages	12,410	902.8	12,670	934.1	120,140	896.5	126,310	952.0	145,100	902.6	152,080	955.7
Under 1 year	} 660	170.5	540	137.8	3,850	<sup>2</sup> 1,624.5	3,960	<sup>2</sup> 1,498.0	4,780	<sup>2</sup> 1,671.3	4,860	<sup>2</sup> 1,523.5
1–4 years					600	60.9	700	67.3	740	62.6	850	68.1
5–14 years					940	36.6	1,010	39.9	1,090	35.4	1,160	38.2
15–24 years	620	260.4	630	270.6	5,390	233.1	5,860	256.6	6,410	230.4	6,930	253.2
25–34 years	630	291.5	780	360.0	6,580	309.6	8,020	375.7	8,040	315.2	9,960	388.5
35–44 years	970	445.4	1,230	581.8	11,450	541.7	13,380	649.2	13,800	543.7	16,400	664.2
45–54 years	1,400	1,002.1	1,460	1,100.0	15,340	1,140.6	15,510	1,211.0	18,640	1,155.6	18,500	1,206.8
55–64 years	2,190	2,663.8	2,120	2,659.9	18,400	2,311.0	19,120	2,452.3	22,230	2,335.1	22,720	2,429.9
65–74 years	2,530	4,304.7	2,580	4,453.3	24,510	4,280.1	24,810	4,374.7	29,840	4,337.2	29,900	4,397.1
75–84 years	2,210	8,106.2	2,220	8,400.7	21,010	7,935.1	22,510	8,764.8	25,490	8,041.0	26,940	8,746.8
85 years and over	1,180	15,969.6	1,110	15,981.9	11,880	16,688.8	11,300	16,769.3	13,840	16,282.4	13,720	16,938.3
Not stated	30	...	—	...	180	...	130	...	210	...	140	...
Age-adjusted rate <sup>3</sup>	...	923.2	...	968.4	...	913.8	...	981.6	...	922.3	...	984.2

See footnotes at end of table.

**Table 5. Provisional number of deaths and death rates, by age, race, and sex, and age-adjusted death rates by race and sex: United States, October 1996 and 1997, cumulative figures 1996 and 1997, and 12 months ending with October 1996 and 1997—Con.**

[Data are provisional, estimated from a 10-percent sample of deaths. Age-specific rates on an annual basis per 100,000 population in specified group; age-adjusted rates per 100,000 U.S. standard population; see [Technical notes](#). Because of rounding of estimates, figures may not add to totals. For method of computation and information on standard errors of the estimates, see [Technical notes](#)]

Age, race, and sex	October				January–October				12 months ending with October							
	1997		1996		1997		1996		1997		1996					
	Number	Rate	Number	Rate	Number	Rate	Number	Rate	Number	Rate	Number	Rate				
Black female																
All ages . . . . .	11,050	727.2	11,120	740.4	108,240	730.3	109,790	747.1	131,430	739.1	131,550	746.5				
Under 1 year . . . . .	} 550	146.5	410	107.7	3,160	<sup>2</sup> 1,364.3	3,390	<sup>2</sup> 1,319.5	3,880	<sup>2</sup> 1,395.7	4,020	<sup>2</sup> 1,292.6				
1–4 years . . . . .					440	46.0	710	70.2	540	47.0	860	70.8				
5–14 years . . . . .					550	22.1	670	27.3	690	23.1	770	26.1				
15–24 years . . . . .					120	50.8	130	56.0	1,310	56.5	1,460	64.5	1,620	58.7	1,670	61.1
25–34 years . . . . .					200	83.5	260	107.9	2,890	122.2	3,630	152.5	3,710	131.1	4,440	155.7
35–44 years . . . . .	730	295.8	740	307.1	6,940	288.7	7,090	301.6	8,230	285.5	8,620	305.9				
45–54 years . . . . .	870	516.6	990	618.1	9,150	564.8	9,290	600.7	11,060	568.3	11,130	601.6				
55–64 years . . . . .	1,220	1,136.4	1,390	1,341.9	13,920	1,340.9	13,470	1,328.3	16,620	1,337.1	16,180	1,330.6				
65–74 years . . . . .	2,180	2,670.9	2,290	2,843.0	20,880	2,620.9	21,380	2,700.1	25,430	2,662.8	25,220	2,660.3				
75–84 years . . . . .	2,600	5,606.8	2,510	5,518.5	25,850	5,708.8	26,060	5,864.7	31,740	5,834.6	31,410	5,904.1				
85 years and over . . . . .	2,560	14,422.0	2,400	13,958.4	23,020	13,391.5	22,560	13,513.2	27,770	13,480.6	27,130	13,633.2				
Not stated . . . . .	10	...	–	...	130	...	90	...	140	...	100	...				
Age-adjusted rate <sup>3</sup> . . . . .	...	518.7	...	547.5	...	534.9	...	554.9	...	541.6	...	554.3				

... Category not applicable.

– Quantity zero.

<sup>1</sup>Includes races other than white and black.

<sup>2</sup>Death rates for under 1 year (based on population estimates) differ from infant mortality rates (based on live births); see [table 9](#) for infant mortality rates.

<sup>3</sup>For method of computation, see [Technical notes](#).

NOTES: Figures include all revisions received from the States. Cumulative and 12-month figures for the current year reflect revisions received for previous months, and figures for earlier years may differ from those previously published.

**Table 6. Provisional number of deaths and death rates for 72 selected causes, Human immunodeficiency virus infection, and Alzheimer's disease: United States, October 1996 and 1997, cumulative figures 1996 and 1997, and 12 months ending with October 1996 and 1997**

[Data are provisional, estimated from a 10-percent sample of deaths. Rates on an annual basis per 100,000 estimated population. Because of rounding of estimates, figures may not add to totals. For method of computation and information on standard errors of the estimates, see [Technical notes](#). For explanation of asterisks preceding cause-of-death categories, see [Technical notes](#)]

Cause of death (Based on the <i>Ninth Revision, International Classification of Diseases, 1975</i> )	October		October		January–October				12 months ending with October			
	1997		1996		1997		1996		1997		1996	
	Number	Rate	Number	Rate	Number	Rate	Number	Rate	Number	Rate	Number	Rate
All causes . . . . .	193,000	848.5	188,000	832.9	1,911,000	858.5	1,920,000	869.7	2,303,000	861.9	2,304,000	870.3
Shigellosis and amebiasis . . . . .	—	*	—	*	—	*	—	*	—	*	—	*
Certain other intestinal infections . . . . .	60	*	40	*	660	0.3	710	0.3	770	0.3	790	0.3
Tuberculosis . . . . .	140	0.6	100	*	890	0.4	800	0.4	1,100	0.4	1,040	0.4
Tuberculosis of respiratory system . . . . .	100	*	70	*	680	0.3	630	0.3	850	0.3	830	0.3
Other tuberculosis . . . . .	40	*	30	*	210	0.1	170	0.1	250	0.1	220	0.1
Whooping cough . . . . .	10	*	—	*	30	*	10	*	30	*	10	*
Streptococcal sore throat, scarlatina, and erysipelas . . . . .	—	*	—	*	—	*	—	*	—	*	—	*
Meningococcal infection . . . . .	20	*	10	*	270	0.1	230	0.1	310	0.1	250	0.1
Septicemia . . . . .	1,780	7.8	1,710	7.6	18,340	8.2	17,810	8.1	22,200	8.3	21,180	8.0
Acute poliomyelitis . . . . .	—	*	—	*	—	*	—	*	—	*	—	*
Measles . . . . .	—	*	—	*	10	*	—	*	10	*	—	*
Viral hepatitis . . . . .	260	1.1	370	1.6	3,370	1.5	3,120	1.4	4,060	1.5	3,740	1.4
Syphilis . . . . .	—	*	—	*	40	*	30	*	40	*	30	*
All other infectious and parasitic diseases <sup>1</sup> . . . . .	1,830	8.0	2,610	11.6	18,660	8.4	32,320	14.6	24,280	9.1	39,980	15.1
Malignant neoplasms, including neoplasms of lymphatic and hematopoietic tissues . . . . .	47,570	208.7	44,980	199.8	446,390	200.5	451,170	204.4	537,550	201.2	538,880	203.5
Malignant neoplasms of lip, oral cavity, and pharynx . . . . .	850	3.7	610	2.7	6,620	3.0	6,520	2.9	7,950	3.0	7,850	3.0
Malignant neoplasms of digestive organs and peritoneum . . . . .	11,250	49.3	11,090	49.2	103,830	46.6	105,310	47.7	125,360	46.9	125,850	47.5
Malignant neoplasms of respiratory and intrathoracic organs . . . . .	13,660	59.9	13,100	58.2	130,420	58.6	131,960	59.8	157,520	59.0	157,540	59.5
Malignant neoplasm of breast . . . . .	3,680	16.1	3,700	16.4	34,180	15.3	36,860	16.7	40,860	15.3	44,020	16.6
Malignant neoplasms of genital organs . . . . .	5,120	22.5	4,670	20.7	49,760	22.3	49,690	22.5	60,300	22.6	59,470	22.5
Malignant neoplasms of urinary organs . . . . .	1,990	8.7	1,880	8.3	19,850	8.9	19,050	8.6	23,830	8.9	22,780	8.6
Malignant neoplasms of all other and unspecified sites . . . . .	5,770	25.3	5,500	24.4	54,280	24.4	55,210	25.0	65,320	24.4	65,670	24.8
Leukemia . . . . .	1,960	8.6	1,630	7.2	17,390	7.8	17,180	7.8	20,540	7.7	20,380	7.7
Other malignant neoplasms of lymphatic and hematopoietic tissues . . . . .	3,290	14.4	2,810	12.5	30,050	13.5	29,390	13.3	35,860	13.4	35,310	13.3
Benign neoplasms, carcinoma in situ, and neoplasms of uncertain behavior and of unspecified nature . . . . .	740	3.2	510	2.3	6,480	2.9	6,380	2.9	7,740	2.9	7,660	2.9
Diabetes mellitus . . . . .	5,170	22.7	5,000	22.2	51,110	23.0	50,530	22.9	62,050	23.2	59,880	22.6
Nutritional deficiencies . . . . .	320	1.4	350	1.5	3,010	1.3	3,280	1.5	3,530	1.3	4,020	1.5
Anemias . . . . .	350	1.5	320	1.4	3,450	1.5	3,250	1.5	4,170	1.6	4,100	1.5
Meningitis . . . . .	50	*	40	*	490	0.2	490	0.2	580	0.2	600	0.2
Major cardiovascular diseases . . . . .	76,530	335.7	76,630	340.3	774,730	348.0	782,100	354.4	934,260	349.7	940,520	355.2
Diseases of heart . . . . .	58,550	256.9	58,910	261.6	595,520	267.5	606,190	274.7	718,460	268.9	728,500	275.2
Rheumatic fever and rheumatic heart disease . . . . .	370	1.6	380	1.7	3,750	1.7	4,130	1.9	4,480	1.7	4,870	1.8
Hypertensive heart disease . . . . .	2,000	8.8	2,040	9.1	21,930	9.8	21,950	9.9	26,000	9.7	26,020	9.8
Hypertensive heart and renal disease . . . . .	220	1.0	150	0.7	1,870	0.8	1,800	0.8	2,280	0.9	2,240	0.8
Ischemic heart disease . . . . .	37,680	165.3	38,200	169.6	382,340	171.7	392,700	177.9	462,640	173.2	472,770	178.6
Acute myocardial infarction . . . . .	16,560	72.6	17,400	77.3	171,180	76.9	177,940	80.6	207,130	77.5	213,870	80.8
Other acute and subacute forms of ischemic heart disease . . . . .	240	1.0	260	1.1	2,390	1.1	2,190	1.0	2,890	1.1	2,680	1.0
Angina pectoris . . . . .	70	*	60	*	550	0.2	600	0.3	630	0.2	740	0.3
Old myocardial infarction and other forms of chronic ischemic heart disease . . . . .	20,810	91.3	20,480	90.9	208,210	93.5	211,970	96.0	251,990	94.3	255,480	96.5
Other diseases of endocardium . . . . .	1,580	6.9	1,230	5.5	13,970	6.3	13,470	6.1	16,980	6.4	16,060	6.1
All other forms of heart disease . . . . .	16,690	73.2	16,910	75.1	171,650	77.1	172,140	78.0	206,080	77.1	206,540	78.0
Hypertension with or without renal disease . . . . .	990	4.3	1,230	5.5	10,640	4.8	10,160	4.6	12,670	4.7	12,160	4.6
Cerebrovascular diseases . . . . .	13,180	57.8	12,770	56.7	131,830	59.2	130,850	59.3	159,540	59.7	157,530	59.5
Intracerebral and other intracranial hemorrhage . . . . .	2,250	9.9	1,760	7.8	21,000	9.4	19,050	8.6	25,460	9.5	22,990	8.7
Cerebral thrombosis and unspecified occlusion of cerebral arteries . . . . .	1,030	4.5	1,090	4.8	10,050	4.5	10,120	4.6	12,380	4.6	12,330	4.7
Cerebral embolism . . . . .	60	*	110	0.5	450	0.2	560	0.2	690	0.3	650	0.2
All other and late effects of cerebrovascular diseases . . . . .	9,840	43.2	9,820	43.6	100,330	45.1	101,120	45.8	121,000	45.3	121,560	45.9

See footnotes at end of table.

**Table 6. Provisional number of deaths and death rates for 72 selected causes, Human immunodeficiency virus infection, and Alzheimer's disease: United States, October 1996 and 1997, cumulative figures 1996 and 1997, and 12 months ending with October 1996 and 1997—Con.**

[Data are provisional, estimated from a 10-percent sample of deaths. Rates on an annual basis per 100,000 estimated population. Because of rounding of estimates, figures may not add to totals. For method of computation and information on standard errors of the estimates, see [Technical notes](#). For explanation of asterisks preceding cause-of-death categories, see [Technical notes](#)]

Cause of death (Based on the <i>Ninth Revision, International Classification of Diseases, 1975</i> )	October		January–October				12 months ending with October						
	1997		1996		1997		1996		1997		1996		
	Number	Rate	Number	Rate	Number	Rate	Number	Rate	Number	Rate	Number	Rate	
Major cardiovascular diseases—Con.													
Atherosclerosis . . . . .	440	1,360	6.0	1,520	6.7	13,340	6.0	12,970	5.9	15,940	6.0	16,010	6.0
Other diseases of arteries, arterioles, and capillaries . . . . .	.441–448	2,440	10.7	2,190	9.7	23,410	10.5	21,920	9.9	27,660	10.4	26,320	9.9
Acute bronchitis and bronchiolitis . . . . .	.466	20	*	—	*	470	0.2	340	0.1	530	0.2	420	0.2
Pneumonia and influenza . . . . .	.480–487	5,940	26.1	6,200	27.5	69,320	31.1	67,060	30.4	83,820	31.4	80,820	30.5
Pneumonia . . . . .	.480–486	5,940	26.1	6,190	27.5	68,550	30.8	66,590	30.2	82,850	31.0	80,300	30.3
Influenza . . . . .	.487	—	*	10	*	770	0.3	460	0.2	970	0.4	520	0.2
Chronic obstructive pulmonary diseases and allied conditions . . . . .	.490–496	8,190	35.9	7,500	33.3	90,330	40.6	87,930	39.8	107,860	40.4	103,830	39.2
Bronchitis, chronic and unspecified . . . . .	.490–491	240	1.0	190	0.8	2,510	1.1	2,540	1.1	2,920	1.1	3,000	1.1
Emphysema . . . . .	.492	1,190	5.2	980	4.3	14,880	6.7	13,840	6.3	17,840	6.7	16,350	6.2
Asthma . . . . .	.493	430	1.9	410	1.8	4,360	2.0	4,270	1.9	5,240	2.0	5,200	2.0
Other chronic obstructive pulmonary diseases and allied conditions . . . . .	.494–496	6,330	27.8	5,920	26.3	68,580	30.8	67,280	30.5	81,870	30.6	79,280	29.9
Ulcer of stomach and duodenum . . . . .	.531–533	500	2.2	410	1.8	4,220	1.9	4,120	1.9	4,890	1.8	4,950	1.9
Appendicitis . . . . .	.540–543	10	*	30	*	290	0.1	380	0.2	380	0.1	420	0.2
Hernia of abdominal cavity and intestinal obstruction without mention of hernia . . . . .	.550–553,560	630	2.8	600	2.7	5,250	2.4	5,350	2.4	6,350	2.4	6,270	2.4
Chronic liver disease and cirrhosis . . . . .	.571	2,380	10.4	2,070	9.2	21,250	9.5	20,170	9.1	25,540	9.6	24,100	9.1
Cholelithiasis and other disorders of gallbladder . . . . .	.574–575	190	0.8	210	0.9	2,230	1.0	2,240	1.0	2,670	1.0	2,730	1.0
Nephritis and nephrotic syndrome, and nephrosis . . . . .	.580–589	2,410	10.6	2,160	9.6	22,100	9.9	21,990	10.0	27,080	10.1	26,300	9.9
Acute glomerulonephritis and nephrotic syndrome . . . . .	.580–581	40	*	30	*	270	0.1	170	0.1	320	0.1	220	0.1
Chronic glomerulonephritis, nephritis and nephropathy, not specified as acute or chronic, and renal sclerosis, unspecified . . . . .	.582–583,587	120	0.5	150	0.7	1,320	0.6	1,460	0.7	1,660	0.6	1,760	0.7
Renal failure, disorders resulting from impaired renal function, and small kidney of unknown cause . . . . .	.584–586,588–589	2,250	9.9	1,980	8.8	20,510	9.2	20,370	9.2	25,100	9.4	24,320	9.2
Infections of kidney . . . . .	.590	20	*	50	*	540	0.2	750	0.3	690	0.3	820	0.3
Hyperplasia of prostate . . . . .	.600	30	*	10	*	330	0.1	350	0.2	400	0.1	400	0.2
Complications of pregnancy, childbirth, and the puerperium . . . . .	.630–676	—	*	10	*	200	0.1	230	0.1	250	0.1	300	0.1
Pregnancy with abortive outcome . . . . .	.630–638	—	*	—	*	40	*	20	*	40	*	30	*
Other complications of pregnancy, childbirth, and the puerperium . . . . .	.640–676	—	*	10	*	160	0.1	210	0.1	210	0.1	270	0.1
Congenital anomalies . . . . .	.740–759	1,100	4.8	1,160	5.1	9,700	4.4	9,880	4.5	11,290	4.2	11,920	4.5
Certain conditions originating in the perinatal period . . . . .	.760–779	1,310	5.7	1,050	4.7	10,510	4.7	10,710	4.8	12,700	4.8	12,780	4.8
Birth trauma, intrauterine hypoxia, birth asphyxia, and respiratory distress syndrome . . . . .	.767–769	180	0.8	210	0.9	1,650	0.7	1,710	0.8	2,090	0.8	2,030	0.8
Other conditions originating in the perinatal period . . . . .	.760–766,770–779	1,130	5.0	840	3.7	8,860	4.0	9,000	4.1	10,610	4.0	10,750	4.1
Symptoms, signs, and ill-defined conditions . . . . .	.780–799	3,800	16.7	3,280	14.6	38,850	17.4	34,600	15.7	46,020	17.2	42,110	15.9
All other diseases . . . . .	.Residual	19,290	84.6	17,890	79.4	191,360	86.0	180,900	82.0	229,500	85.9	218,010	82.3
Accidents and adverse effects . . . . .	E800–E949	8,410	36.9	7,670	34.1	74,970	33.7	75,480	34.2	90,250	33.8	90,290	34.1
Motor vehicle accidents . . . . .	E810–E825	4,280	18.8	4,010	17.8	36,190	16.2	36,130	16.4	43,750	16.4	43,380	16.4
All other accidents and adverse effects . . . . .	E800–E807,E826–E949	4,130	18.1	3,660	16.2	38,780	17.4	39,350	17.8	46,500	17.4	46,910	17.7
Suicide . . . . .	E950–E959	2,430	10.7	2,480	11.0	23,650	10.6	25,350	11.5	28,470	10.7	29,840	11.3
Homicide and legal intervention . . . . .	E960–E978	1,670	7.3	1,900	8.4	15,800	7.1	17,600	8.0	19,090	7.1	21,370	8.1
All other external causes . . . . .	E980–E999	240	1.0	190	0.8	2,030	0.9	2,010	0.9	2,340	0.9	2,290	0.9
Human immunodeficiency virus infection <sup>2</sup> . . . . .	*042–*044	1,280	5.6	2,090	9.3	13,790	6.2	27,020	12.2	18,000	6.7	33,660	12.7
Alzheimer's disease . . . . .	.331.0	1,920	8.4	1,670	7.4	19,110	8.6	17,940	8.1	23,090	8.6	21,650	8.2

— Quantity zero. \* Figure does not meet standards of reliability or precision; see [Technical notes](#).  
<sup>1</sup>Includes data for deaths due to Human immunodeficiency virus infection (categories \*042–\*044) shown separately below; see [Technical notes](#).  
<sup>2</sup>Included in All other infectious and parasitic diseases shown above.

NOTES: Figures include all revisions received from the States. Cumulative and 12-month figures for the current year reflect revisions received for previous months, and figures for earlier years may differ from those previously published.

**Table 7. Provisional number of deaths and death rates for 16 selected subcategories of Malignant neoplasms, including neoplasms of lymphatic and hematopoietic tissues: United States, October 1996 and 1997, cumulative figures 1996 and 1997, and 12 months ending with October 1996 and 1997**

[Data are provisional, estimated from a 10-percent sample of deaths. Rates on an annual basis per 100,000 estimated population. Because of rounding of estimates, figures may not add to totals. For method of computation and information on standard errors of the estimates, see [Technical notes](#)]

Cause of death (Based on the <i>Ninth Revision, International Classification of Diseases, 1975</i> )	October				January–October				12 months ending with October			
	1997		1996		1997		1996		1997		1996	
	Number	Rate	Number	Rate	Number	Rate	Number	Rate	Number	Rate	Number	Rate
Malignant neoplasms, including neoplasms of lymphatic and hematopoietic tissues <sup>1</sup> . . . . .140–208	47,570	208.7	44,980	199.8	446,390	200.5	451,170	204.4	537,550	201.2	538,880	203.5
Malignant neoplasm of esophagus . . . . .150	930	4.1	1,120	5.0	9,150	4.1	9,360	4.2	10,940	4.1	10,910	4.1
Malignant neoplasm of stomach . . . . .151	1,160	5.1	1,250	5.5	10,800	4.8	11,010	5.0	13,190	4.9	13,200	5.0
Malignant neoplasms of colon, rectum, rectosigmoid junction, and anus . . . . .153,154	5,160	22.6	5,070	22.5	45,960	20.6	47,660	21.6	55,550	20.8	56,760	21.4
Malignant neoplasm of pancreas . . . . .157	2,560	11.2	2,260	10.0	22,820	10.2	22,800	10.3	27,610	10.3	27,190	10.3
Malignant neoplasms of trachea, bronchus, and lung . . . . .162	13,200	57.9	12,670	56.3	126,350	56.7	127,610	57.8	152,490	57.1	152,280	57.5
Malignant melanoma of skin . . . . .172	670	2.9	600	2.7	6,290	2.8	5,920	2.7	7,400	2.8	6,940	2.6
Malignant neoplasm of cervix uteri . . . . .180	390	1.7	390	1.7	3,680	1.7	3,690	1.7	4,470	1.7	4,550	1.7
Malignant neoplasms of body of uterus and of uterus, part unspecified . . . . .179,182	540	2.4	460	2.0	5,170	2.3	4,830	2.2	6,130	2.3	5,940	2.2
Malignant neoplasm of ovary . . . . .183.0	1,070	4.7	1,130	5.0	11,450	5.1	11,310	5.1	13,650	5.1	13,480	5.1
Malignant neoplasm of prostate . . . . .185	2,970	13.0	2,540	11.3	27,840	12.5	28,230	12.8	34,090	12.8	33,510	12.7
Malignant neoplasm of bladder . . . . .188	990	4.3	830	3.7	10,040	4.5	9,270	4.2	12,040	4.5	11,160	4.2
Malignant neoplasms of kidney and other and unspecified urinary organs . . . . .189	1,000	4.4	1,050	4.7	9,810	4.4	9,780	4.4	11,790	4.4	11,620	4.4
Malignant neoplasms of brain and other and unspecified parts of nervous system . . . . .191,192	1,020	4.5	990	4.4	9,280	4.2	9,630	4.4	11,250	4.2	11,570	4.4
Hodgkin's disease . . . . .201	70	*	80	*	1,170	0.5	1,220	0.6	1,420	0.5	1,440	0.5
Malignant lymphoma other than Hodgkin's disease . . . . .200,202	2,090	9.2	1,820	8.1	20,170	9.1	19,350	8.8	23,990	9.0	23,350	8.8
Multiple myeloma and other immunoproliferative neoplasms . . . . .203	1,130	5.0	910	4.0	8,710	3.9	8,830	4.0	10,450	3.9	10,520	4.0

\* Figure does not meet standards of reliability or precision; see [Technical notes](#).

<sup>1</sup>Includes figures for subcategories not shown below.

NOTES: Figures include all revisions received from the States. Cumulative and 12-month figures for the current year reflect revisions received for previous months, and figures for earlier years may differ from those previously published.

**Table 8. Provisional number of deaths and death rates for firearm mortality: United States, October 1996 and 1997, cumulative figures 1996 and 1997, and 12 months ending with October 1996 and 1997**

[Data are provisional, estimated from a 10-percent sample of deaths. Rates on an annual basis per 100,000 estimated population. Because of rounding of estimates, figures may not add to totals. For method of computation and information on standard errors of the estimates, see [Technical notes](#)]

Cause of death (Based on the <i>Ninth Revision, International Classification of Diseases, 1975</i> )	October				January–October				12 months ending with October			
	1997		1996		1997		1996		1997		1996	
	Number	Rate	Number	Rate	Number	Rate	Number	Rate	Number	Rate	Number	Rate
Injury by firearms . . . . .E922,E955.0–E955.4,E965.0–965.4,E970,E985.0–E985.4	2,730	12.0	2,950	13.1	26,510	11.9	28,950	13.1	32,030	12.0	35,020	13.2
Accident caused by firearm missile . . . . .E922	120	0.5	110	0.5	890	0.4	1,030	0.5	1,200	0.4	1,370	0.5
Suicide by firearms . . . . .E955.0–E955.4	1,390	6.1	1,440	6.4	14,120	6.3	15,370	7.0	17,090	6.4	18,170	6.9
Homicide and legal intervention by firearms . . . . .E965.0–E965.4,E970	1,180	5.2	1,370	6.1	11,270	5.1	12,350	5.6	13,500	5.1	15,250	5.8
Injury by firearms, undetermined whether accidentally or purposely inflicted . . . . .E985.0–E985.4	40	*	20	*	230	0.1	200	0.1	240	0.1	230	0.1

\* Figure does not meet standards of reliability or precision; see [Technical notes](#).

NOTES: Figures include all revisions received from the States. Cumulative and 12-month figures for the current year reflect revisions received for previous months, and figures for earlier years may differ from those previously published.

**Table 9. Provisional number of deaths under 1 year and infant mortality rates, by age and for 10 selected causes: United States, October 1996 and 1997, cumulative figures 1996 and 1997, and 12 months ending with October 1996 and 1997**

[Data are provisional, estimated from a 10-percent sample of deaths. Rates on an annual basis per 100,000 live births. Because of rounding of estimates, figures may not add to totals. For method of computation and information on standard errors of the estimates, see [Technical notes](#)]

Age and cause of death (Based on the <i>Ninth Revision, International Classification of Diseases, 1975</i> )	October				January–October				12 months ending with October			
	1997		1996		1997		1996		1997		1996	
	Number	Rate	Number	Rate	Number	Rate	Number	Rate	Number	Rate	Number	Rate
Total, under 1 year . . . . .	2,600	777.1	2,500	722.9	22,700	707.3	23,600	726.2	27,300	710.6	28,300	730.7
Under 28 days . . . . .	1,850	559.8	1,610	468.1	14,810	460.7	15,670	483.1	17,610	459.0	18,630	480.4
28 days–11 months . . . . .	720	217.9	880	255.9	7,930	246.7	7,890	243.2	9,650	251.5	9,710	250.4
Certain gastrointestinal diseases . . . . . .008–009,535,555–558	10	*	10	*	140	4.4	200	6.2	160	4.2	230	5.9
Pneumonia and influenza . . . . . .480–487	20	*	10	*	190	5.9	250	7.7	270	7.0	320	8.3
Congenital anomalies . . . . . .740–759	590	178.5	720	209.4	5,330	165.8	5,610	172.9	6,240	162.7	6,560	169.2
Disorders relating to short gestation and unspecified low birthweight . . . . . .765	360	108.9	200	58.2	2,750	85.6	3,070	94.6	3,240	84.5	3,490	90.0
Birth trauma . . . . . .767	40	*	10	2.9	120	3.7	150	4.6	140	3.6	200	5.2
Intrauterine hypoxia and birth asphyxia . . . . . .768	50	*	60	*	430	13.4	450	13.9	500	13.0	530	13.7
Respiratory distress syndrome . . . . . .769	80	*	140	40.7	1,020	31.7	1,080	33.3	1,330	34.7	1,250	32.2
Other conditions originating in the perinatal period . . . . . .760–764,766,770–779	760	230.0	610	177.4	5,990	186.3	5,840	180.0	7,250	189.0	7,180	185.2
Sudden infant death syndrome . . . . . .798.0	100	*	210	61.1	1,550	48.2	2,190	67.5	1,970	51.4	2,730	70.4
All other causes . . . . . .Residual	550	166.4	500	145.4	5,220	162.4	4,720	145.5	6,160	160.6	5,860	151.1

\* Figure does not meet standards of reliability or precision; see [Technical notes](#).

NOTES: Figures include all revisions received from the States. Cumulative and 12-month figures for the current year reflect revisions received for previous months, and figures for earlier years may differ from those previously published.



## Technical notes

### Nature and sources of data

Data in this report are provisional unless otherwise specified and include only events occurring within the United States (50 States and the District of Columbia). Mortality data exclude fetal deaths. Data for the Commonwealth of Puerto Rico are not included in the U.S. totals.

Birth, death, and infant death figures in [tables 2](#) and [4](#) for each State are estimates by State of residence. These estimates are derived by applying adjustment ratios to the actual counts of certificates for all events occurring in the State and received in registration offices during a 1-month period regardless of date of the event. The adjustment ratios for each data year represent the observed relationship between final State occurrence figures and final State residence figures for the three most recent years for which final data were available and are expressed as a single ratio for each State. As in previous years, monthly State marriage and divorce figures represent the actual count of all events occurring in the State (State of occurrence) that were received in the registration offices during the 1-month period. Delay in the receipt of certificates in a registration office may result in a low State figure for a given month followed by a high figure for the month(s) in which the delayed records are received. Data for previous months and cumulative data include revised figures received from the States.

Figures for births, deaths, and infant deaths for California in [tables 2](#) and [4](#) contain adjustments for varying lengths of State reporting periods. Figures for Texas for all events shown in [tables 2–4](#) also are adjusted for varying lengths of State reporting periods. The figures for both States are adjusted by the ratio between the number of days in the data month and the number of days in the State reporting period. The adjusted figures are included in the U.S. totals shown elsewhere in this report.

U.S. totals for births, deaths, and infant deaths are based on the State estimates by State of residence and, therefore, in effect, exclude events to nonresidents of the United States. Events to nonresidents of the United States are included in all

marriage and divorce figures. The effect of excluding events to nonresidents from the U.S. totals is small.

Provisional totals for the United States include estimates for State data shown as not available. Provisional totals for births and marriages for the entire United States include adjustments for observed differences between provisional and final monthly figures.

Divorce figures include reported annulments. The monthly national divorce estimate is obtained by multiplying the total for the reporting areas by the ratio observed between the most recent final annual divorce total for the United States and the provisional total for the reporting areas combined.

*Random variation*—Although the counts in this report are not subject to sampling variability (except the Current Mortality Sample), they may be affected by random variation. When the number of events is small and the probability of such an event is small, considerable caution must be observed in interpreting the data. Such infrequent events may be assumed to follow a Poisson probability distribution. For this distribution a simple approximation may be used to estimate the random variation as follows:

If  $N$  is the number of events in the population and  $R$  is the corresponding rate, the chances are 19 in 20 that

$$1. N - 2\sqrt{N} \text{ and } N + 2\sqrt{N}$$

covers the “true” number of events.

$$2. R - 2 \frac{R}{\sqrt{N}} \text{ and } R + 2 \frac{R}{\sqrt{N}}$$

covers the “true” rate.

If the rate  $R_1$  corresponding to  $N_1$  events is compared with the rate  $R_2$  corresponding to  $N_2$  events, the difference between the two rates may be regarded as statistically significant at the 0.05 level if it exceeds

$$2 \sqrt{\frac{R_1^2}{N_1} + \frac{R_2^2}{N_2}}$$

Additional information on random variation in numbers of events, rates, and ratios may be found in the technical appendixes of *Vital Statistics of the United States, 1992, Volumes I and II*.

### Rates

Rates are on an annual basis and, except for infant mortality rates, are per 1,000 or 100,000 estimated population residing in the United States. The populations used for computing these rates are furnished by the U.S. Bureau of the Census. Rates shown in this report beginning with 1992 were computed using populations based on the 1990 Census enumeration comparable to those used for final data. Monthly rates are based on populations estimated for the specific month. Year-to-date rates are averages of monthly rates that have been weighted by the number of days in the corresponding months. Rates for 12-month periods are the sum of events for the period per population estimated at the midpoint of the period.

Infant mortality rates are deaths under 1 year of age for the specified period (monthly, year-to-date, or 12-month period) per 1,000 or 100,000 live births. Births used for computing monthly and year-to-date infant mortality rates are adjusted for monthly variation in the number of births. Births used to compute 12-month rates do not contain this adjustment. Births used for computing infant mortality rates are not corrected for observed differences between provisional and final monthly figures as described earlier in “[Nature and sources of data.](#)” Because monthly infant mortality rates are based on relatively few events, they are highly variable. Therefore, comparisons of monthly infant mortality rates should be interpreted cautiously; see “[Random variation.](#)”

Age-adjusted death rates are used to compare relative mortality risks across groups and over time. However, they should be viewed as constructs or indexes rather than as direct or actual measures of mortality risk. Statistically, they are weighted averages of the age-specific death rates, where the weights represent the fixed population proportions by age. See chapter 5 of an earlier report (1). The age-adjusted death rates presented in this report were computed by the direct method, that is, by applying age-specific death rates to the U.S. standard million population (2). See also chapter 10 of an earlier report (1). Age groups in [table 5](#) were used to compute the age-adjusted

rates shown in that table. It is important not to compare age-adjusted rates with crude rates.

### Current Mortality Sample

The Current Mortality Sample (CMS) is a 10-percent systematic sample of death certificates drawn each month after the certificates are counted in the State registration offices. Deaths and death rates for the United States by age, race, sex, and cause are estimated based on the sample. Because of the additional time required to select and process the certificates, data based on the CMS are published 1 month after publication of the U.S. and State counts. Complete information concerning the underlying cause of death sometimes is not available when the sample is drawn. As a result estimates based on sample counts for certain causes are biased. Correction for bias is not made in this report.

Estimated numbers of deaths based on the sample were proportionately adjusted to be consistent with estimates based on the count of death certificates received in State registration offices.

*HIV infection*—Beginning with data for 1987, the National Center for Health Statistics introduced categories \*042–\*044 for classifying and coding Human immunodeficiency virus (HIV) infection. The asterisks before the categories indicate that these codes are not part of the

*Ninth Revision, International Classification of Diseases*. Deaths classified to these categories are included in All other infectious and parasitic diseases in the List of 72 Selected Causes of Death and are also shown separately at the bottom of table 6.

*Sampling variability*—Because the estimates of deaths and death rates presented in this report with the exception of total deaths and deaths under 1 year are based on a sample of death certificates, they are subject to sampling variability. The estimated relative standard error in the following table is a measure of the

**Relative standard errors for estimated numbers of deaths from the Current Mortality Sample expressed as a percent of the estimate**

Estimated number of deaths	Relative standard error of estimate (as percent)	
	170,000 estimated deaths each month	2,000,000 estimated deaths each year
10 . . . . .	94.9	94.9
20 . . . . .	67.1	67.1
50 . . . . .	42.4	42.4
100 . . . . .	30.0	30.0
200 . . . . .	21.2	21.2
500 . . . . .	13.4	13.4
1,000 . . . . .	9.5	9.5
2,000 . . . . .	6.7	6.7
5,000 . . . . .	4.2	4.2
10,000 . . . . .	2.9	3.0
20,000 . . . . .	2.0	2.1
50,000 . . . . .	1.1	1.3
100,000 . . . . .	0.6	0.9
200,000 . . . . .	...	0.6
500,000 . . . . .	...	0.4
1,000,000 . . . . .	...	0.2

sampling error of the estimated number of deaths (or of the estimated death rate) expressed as a percent of the estimate. The first column refers to monthly estimates; the second to annual; cumulative year-to-date totals fall between the two.

The chances are about 2 in 3 that the percent difference between an estimate and the result of a complete count is less than the percent shown. The chances are about 19 in 20 that the percent difference is less than twice the percent shown. A figure based on 100 or fewer estimated deaths has a relative standard error of 30 percent or more and is, therefore, considered unreliable. A rate based on 100 or fewer estimated deaths has been replaced by an asterisk.

Unless otherwise specified comparisons made in the text between death rates based on the CMS were statistically significant at the 0.05 level of significance. Lack of comment in the text about any two rates does not mean that the difference was tested and found not to be significant at this level.

### References

1. Feinleib M, Zarate AO, eds. Reconsidering age adjustment procedures: Workshop proceedings. National Center for Health Statistics. Vital Health Stat 4(29). 1992.
2. Grove RD, Hetzel AM. Vital statistics rates in the United States, 1940–1960. Public Health Service. Washington: National Center for Health Statistics. 1968.

---

**Suggested citation**

National Center for Health Statistics. Births, marriages, divorces, and deaths for November 1997. Monthly vital statistics report; vol 46 no 11. Hyattsville, Maryland: National Center for Health Statistics. 1998.

---

**Copyright information**

All material appearing in this report is in the public domain and may be reproduced or copied without permission; citation as to source, however, is appreciated.

---

**National Center for Health Statistics**

Director  
Edward J. Sondik, Ph.D.

Deputy Director  
Jack R. Anderson

**Division of Vital Statistics**

Director  
Mary Anne Freedman

---

U.S. DEPARTMENT OF  
HEALTH & HUMAN SERVICES

Centers for Disease Control and Prevention  
National Center for Health Statistics  
6525 Belcrest Road  
Hyattsville, Maryland 20782-2003

FIRST CLASS MAIL  
POSTAGE & FEES PAID  
PHS/NCHS  
PERMIT NO. G-281

---

OFFICIAL BUSINESS  
PENALTY FOR PRIVATE USE, \$300

---

To receive this publication regularly, contact the National Center for Health Statistics by calling 301-436-8500

E-mail: [nchsquery@cdc.gov](mailto:nchsquery@cdc.gov)  
Internet: [www.cdc.gov/nchswww/](http://www.cdc.gov/nchswww/)

---

DHHS Publication No. (PHS) 98-1120  
8-0610 (6/98)