

Monthly Vital Statistics Report



Provisional Data From the CENTERS FOR DISEASE CONTROL AND PREVENTION/National Center for Health Statistics

Births, Marriages, Divorces, and Deaths for July 1996

Births

According to provisional reports, an estimated 352,000 births occurred in the United States during July 1996. This was a 4-percent increase from the provisional number of births reported for July 1995 (337,000). The birth rate, 15.7 live births per 1,000 population, was 4 percent higher than the rate of 15.1 for July 1995. The fertility rate, 69.8 live births per 1,000 women 15–44 years, was 5 percent higher than the comparable rate for July 1995 (66.6). The seasonally adjusted fertility rate (67.0) was also 5 percent higher than the comparable rate for July 1995 (64.0).

During the first 7 months of 1996, an estimated 2,265,000 births occurred, a slight increase from the 2,264,000 reported for the first 7 months of 1995. The birth rate declined by 1 percent from 14.9 in 1995 to 14.7 in 1996. The fertility rate for the first 7 months of 1996 was 65.3, slightly lower than the rate for the same period of 1995 (65.6).

An estimated 3,893,000 live births occurred in the 12-month period ending with July 1996, a decline of 1 percent from the 3,951,000 births reported for the same period a year earlier. The birth rate of 14.7 was 3 percent lower than the rate of 15.1 for the preceding 12-month period. The

fertility rate for the most recent 12-month period was 65.4, 2 percent lower than the rate for the 12 months ending with July 1995 (66.5). These lower rates continue the generally downward trend observed since early 1991.

Natural increase

As a result of natural increase, the excess of births over deaths, an estimated 166,000 people, or 7.4 persons per 1,000 population, were added to the population during July 1996.

For the 12-month period ending with July 1996, 1,580,000 persons were added to the population. This represented a rate of natural increase of 5.9, 6 percent lower

Provisional Vital Statistics for the United States

[Rates for infant deaths are deaths under 1 year per 1,000 live births; fertility rates are live births per 1,000 women aged 15–44 years; all other rates are per 1,000 total population. Data are subject to monthly reporting variation; see Technical notes]

Item	July				January–July				12 months ending with July				
	Number		Rate		Number		Rate		Number		Rate		
	1996	1995	1996	1995	1996	1995	1996	1995	1996	1995	1996	1995	1994
Live births	352,000	337,000	15.7	15.1	2,265,000	2,264,000	14.7	14.9	3,893,000	3,951,000	14.7	15.1	15.4
Fertility rate	69.8	66.6	65.3	65.6	65.4	66.5	67.5
Deaths	186,000	188,000	8.3	8.4	1,377,000	1,373,000	8.9	9.0	2,313,000	2,302,000	8.8	8.8	8.8
Infant deaths	2,300	2,400	6.8	7.1	16,400	17,400	7.3	7.6	28,400	30,300	7.3	7.7	8.0
Natural increase	166,000	149,000	7.4	6.7	888,000	891,000	5.8	5.9	1,580,000	1,649,000	5.9	6.3	6.6
Marriages	232,000	224,000	10.3	10.0	1,276,000	1,296,000	8.4	8.6	2,316,000	2,357,000	8.8	9.0	9.0
Divorces	100,000	97,000	4.5	4.4	677,000	686,000	4.4	4.5	1,160,000	1,184,000	4.4	4.5	4.6
Population base (in millions)	265.2	262.8	264.2	261.8	259.6

... Category not applicable.

NOTES: Figures include revisions received from the States. Twelve-month figures for the current year reflect revisions received for previous months, and figures for earlier years may differ from those previously published.



U.S. DEPARTMENT OF HEALTH AND HUMAN SERVICES
Centers for Disease Control and Prevention
National Center for Health Statistics



than the rate of 6.3 for the preceding 12-month period. The decline in the rate of natural increase was due to a decrease in the birth rate and a constant death rate.

Marriages

Approximately 232,000 couples married in July 1996, 4 percent more than in July 1995 (224,000). The marriage rate per 1,000 population for July 1996 was 10.3, 3 percent more than the rate for 1995 (10.0).

The number and the rate of marriages were 2 percent lower for the first 7 months of 1996 than for the comparable period in 1995. The number of marriages for the period in 1995 was 1,296,000 compared with 1,276,000 in 1996. The marriage rate declined from 8.6 to 8.4.

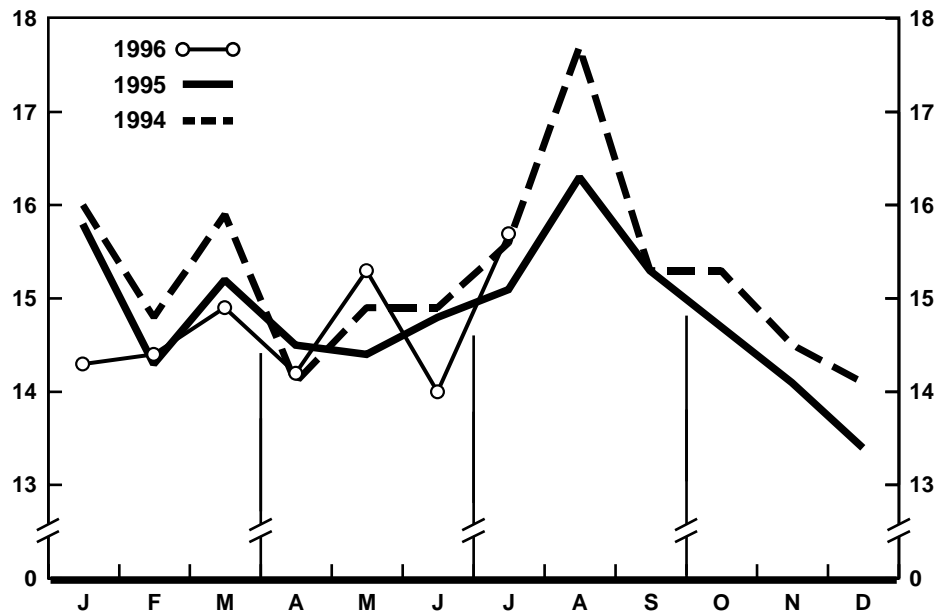
The number of marriages performed during the 12 months ending with July 1996 (2,316,000) was 2 percent lower than the number for the comparable period a year earlier (2,357,000). The marriage rate for the period ending with July 1996 (8.8) was also 2 percent lower than the rate for the period ending with July 1995 (9.0).

Divorces

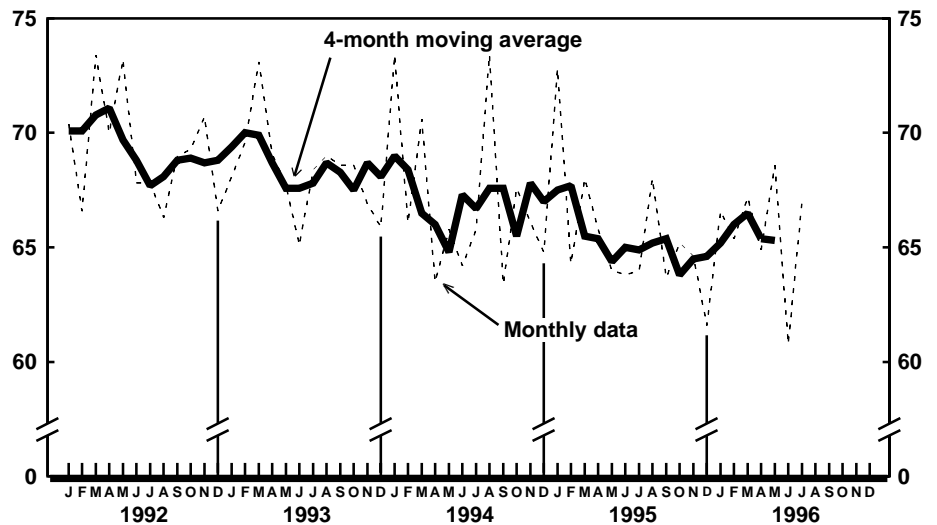
An estimated 100,000 divorces were granted in July 1996, 3 percent more than in July a year earlier (97,000). The divorce rate per 1,000 population for July 1996 was 4.5, 2 percent more than the rate for July 1995 (4.4).

The number of divorces granted during the first 7 months of 1996 (677,000) was 1 percent lower than the number granted for the same period in 1995 (686,000). The divorce rate for the 7-month period in 1996 (4.4) was 2 percent lower than the rate for 1995 (4.5).

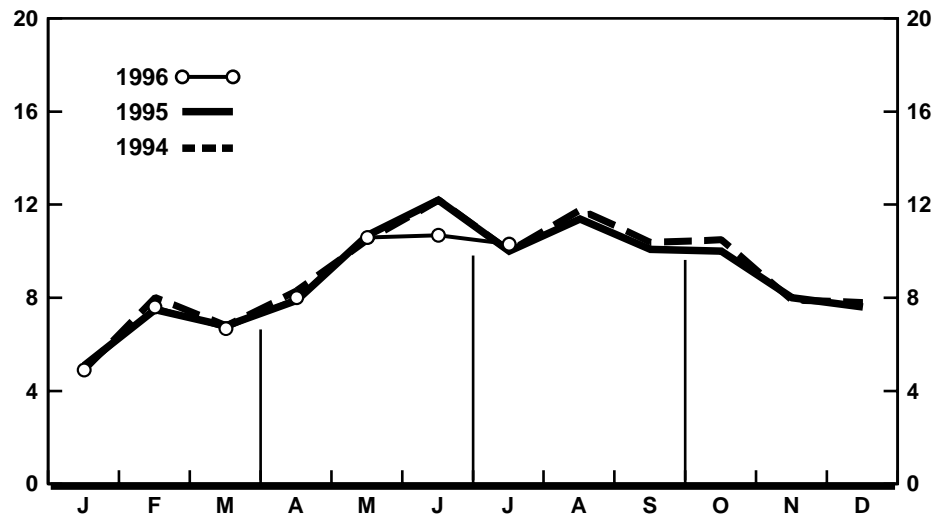
Approximately 1,160,000 couples divorced during the 12-month period ending with July 1996, a decline of 2 percent from the number for the same period a year earlier (1,184,000). The divorce rate for the current 12-month period (4.4) was also 2 percent lower than the rate for the period ending with July 1995 (4.5).



Provisional birth rates per 1,000 population by month: United States, 1994-96



Provisional seasonally adjusted fertility rates per 1,000 women aged 15-44 years: United States, 1992-96



Provisional marriage rates per 1,000 population by month: United States, 1994-96

Deaths

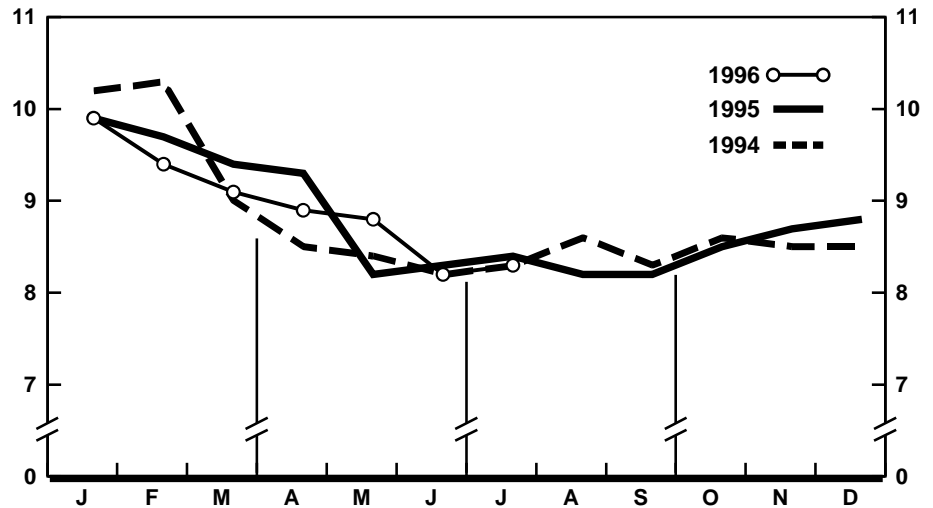
For July 1996 there were an estimated 186,000 deaths in the United States. The death rate was 8.3 deaths per 1,000 population, 1 percent lower than the rate of 8.4 for July a year earlier. Among the 186,000 deaths for July 1996 were 2,300 deaths at ages under 1 year.

According to provisional statistics, 1,377,000 deaths occurred during the first 7 months of 1996, an increase of less than 1 percent from the number estimated for the first 7 months of 1995 (1,373,000). The death rate, 8.9 per 1,000 population, was 1 percent lower than the rate for January–July 1995 (9.0). Among the 1,377,000 deaths for the first 7 months of 1996 were 16,400 deaths at ages under 1 year, yielding an infant mortality rate of 7.3 per 1,000 live births. This rate was 4 percent lower than the rate of 7.6 for the first 7 months of 1995.

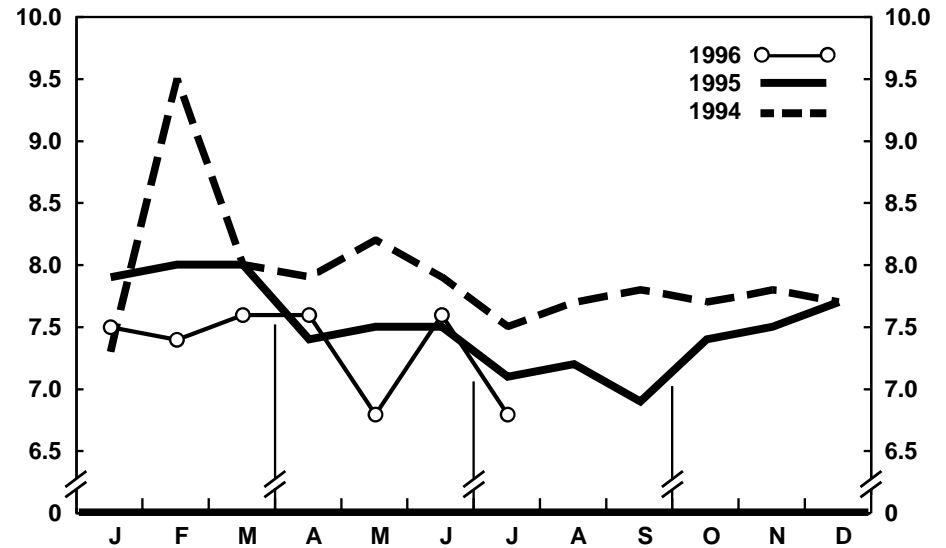
The death rate for the 12 months ending with July 1996 was 8.8 deaths per 1,000 population, the same as the rate for the comparable 12-month period a year earlier. The infant mortality rate for this 12-month period was 7.3 per 1,000 live births, 5 percent lower than the rate of 7.7 for the 12 months ending with July 1995.

Current Mortality Sample, 12 months ending with June 1996—The provisional death rate for the 12 months ending with June 1996 was 876.7 per 100,000 population, a decrease of less than 1 percent from the rate of 878.6 for the 12-month period ending with June 1995. The provisional age-adjusted death rate for the 12-month period ending with June 1996 was 498.4 per 100,000 U.S. standard million population, 2 percent lower than the rate of 507.2 for the 12-month period ending with June 1995. Age-adjusted death rates control for changes and variations in the age composition of the population; therefore, they are better indicators than crude rates for showing changes in mortality risk over time and for showing differences between race-sex groups within the population. Among the race-sex groups, the estimated age-adjusted death rates decreased for white males and black females. By age the death rate for the total population decreased for all age groups except for those between 5–24 years of age and for the group 85 years and over.

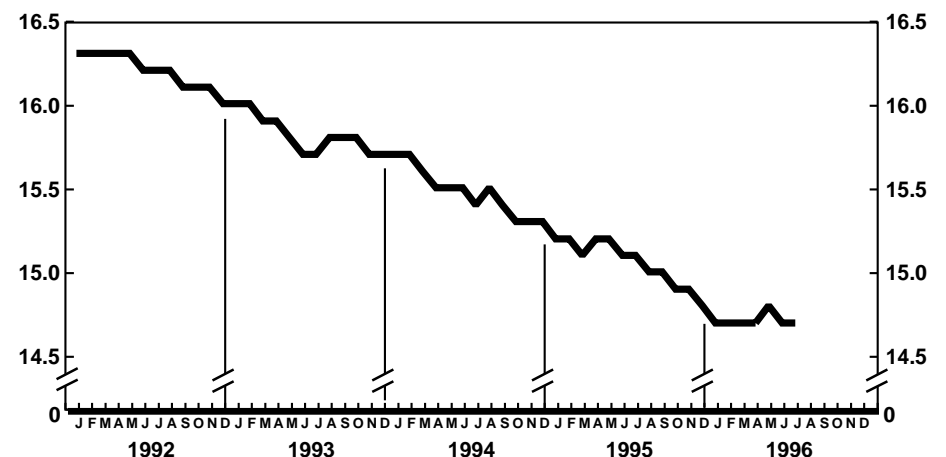
Among the major causes of death, the estimated death rate decreased between



Provisional death rates per 1,000 population by month: United States, 1994–96



Provisional infant mortality rates per 1,000 live births by month: United States, 1994–96

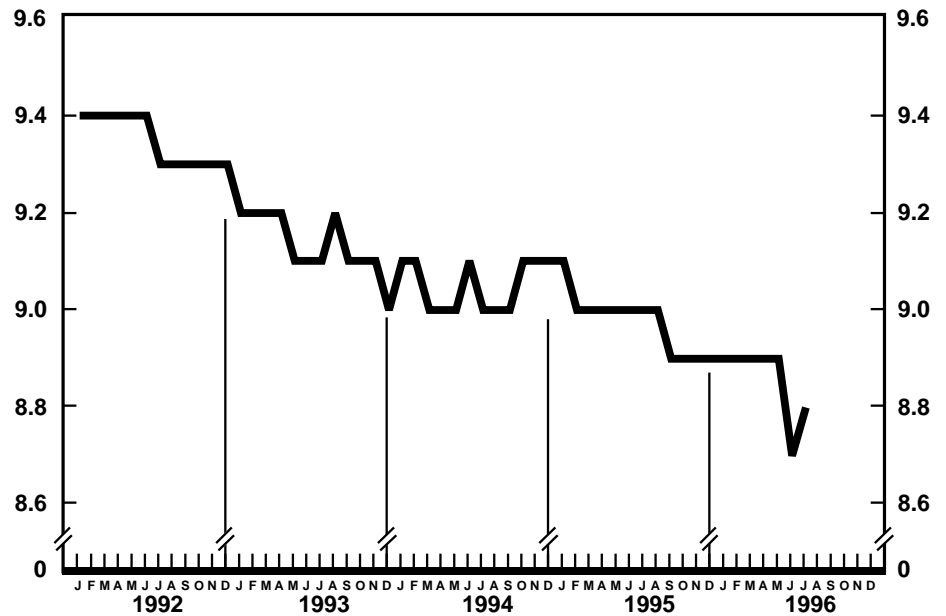


Provisional birth rates per 1,000 population for successive 12-month periods ending with month indicated: United States, 1992–96

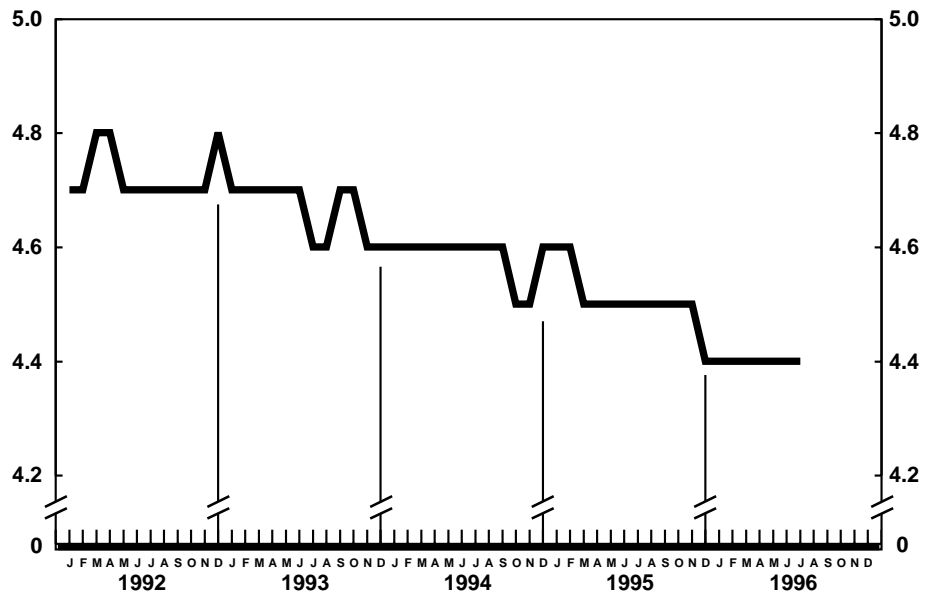
the two successive 12-month periods for Human immunodeficiency virus infection, Malignant neoplasms of genital organs, Suicide, Chronic liver disease and cirrhosis, and Homicide and legal intervention. The death rate continued to increase between the two successive 12-month periods for Alzheimer's disease. The increase for Alzheimer's disease may reflect changes in diagnostic practices rather than real increases in mortality from this cause.

The death rate for injury by firearms for the 12 months ending with June 1996 was 13.3 per 100,000 population, 7 percent lower than the rate of 14.3 for the comparable 12-month period a year earlier.

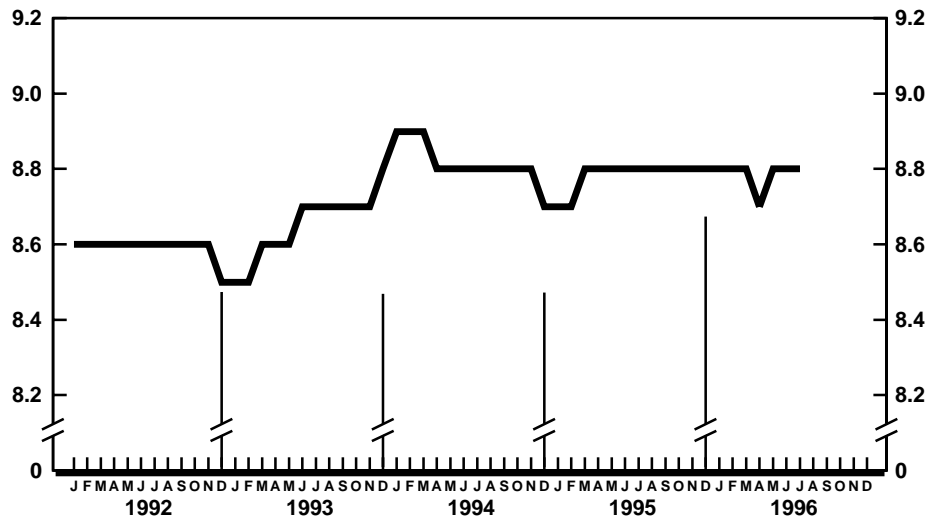
The infant mortality rate for the 12 months ending with June 1996 was 737.4 per 100,000 live births, 5 percent lower than the rate of 772.8 for the same 12-month period a year earlier. For infants under 28 days of age, the 12-month rate ending with June 1996 was 477.6 compared with a rate of 493.2 for the 12-month period a year earlier. The infant mortality rate for infants aged 28 days to 11 months was 259.7, compared with a rate of 278.8 for the 12-month period a year earlier. The changes in the mortality rates for infants under 28 days of age and for those aged 28 days to 11 months were not statistically significant. Among causes of infant death, the infant mortality rate decreased between the two successive 12-month periods for Sudden infant death syndrome.



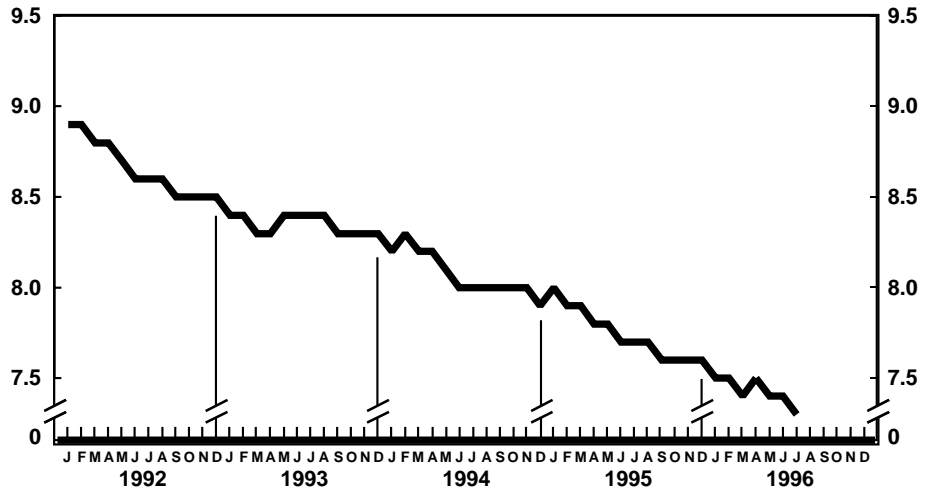
Provisional marriage rates per 1,000 population for successive 12-month periods ending with month indicated: United States, 1992-96



Provisional divorce rates per 1,000 population for successive 12-month periods ending with month indicated: United States, 1992-96



Provisional death rates per 1,000 population for successive 12-month periods ending with month indicated: United States, 1992-96



Provisional infant mortality rates per 1,000 live births for successive 12-month periods ending with month indicated: United States, 1992-96

Table 1. Provisional number of live births, marriages, divorces, deaths, and infant deaths and rates, by month: United States, January 1995–July 1996[Data are provisional and are subject to monthly reporting variation; see [Technical notes](#)]

Period	Live births				Marriages		Divorces		Deaths		Infant deaths	
	Number	Rate per 1,000 women aged 15–44 years		Number	Rate per 1,000 population	Number	Rate per 1,000 population	Number	Rate per 1,000 population	Number	Rate per 1,000 live births	
		Rate per 1,000 population	Seasonally adjusted ¹									
1995:												
January	350,000	15.8	69.4	72.8	111,000	5.1	96,000	4.3	220,000	9.9	2,700	7.9
February	287,000	14.3	63.1	64.3	146,000	7.5	89,000	4.4	194,000	9.7	2,400	8.0
March	338,000	15.2	67.1	68.0	148,000	6.8	98,000	4.4	208,000	9.4	2,700	8.0
April	313,000	14.5	64.1	65.8	165,000	7.9	98,000	4.6	200,000	9.3	2,300	7.4
May	321,000	14.4	63.5	64.0	238,000	10.7	103,000	4.6	184,000	8.2	2,500	7.5
June	318,000	14.8	65.2	63.8	263,000	12.2	104,000	4.8	180,000	8.3	2,400	7.5
July	337,000	15.1	66.6	64.0	224,000	10.0	97,000	4.4	188,000	8.4	2,400	7.1
August	364,000	16.3	72.1	68.0	254,000	11.4	99,000	4.4	184,000	8.2	2,400	7.2
September	331,000	15.3	67.6	63.7	219,000	10.1	99,000	4.6	178,000	8.2	2,200	6.9
October	328,000	14.7	64.9	65.2	224,000	10.0	98,000	4.4	190,000	8.5	2,500	7.4
November	306,000	14.1	62.6	64.6	174,000	8.0	95,000	4.4	188,000	8.7	2,300	7.5
December	300,000	13.4	59.3	61.6	169,000	7.6	92,000	4.1	197,000	8.8	2,400	7.7
1996:												
January	320,000	14.3	63.5	66.6	106,000	4.9	96,000	4.3	221,000	9.9	2,400	7.5
February	302,000	14.4	64.1	65.4	153,000	7.6	85,000	4.1	197,000	9.4	2,300	7.4
March	334,000	14.9	66.3	67.2	145,000	6.7	93,000	4.2	204,000	9.1	2,500	7.6
April	309,000	14.2	63.3	64.9	169,000	8.0	95,000	4.4	193,000	8.9	2,400	7.6
May	344,000	15.3	68.1	68.6	238,000	10.6	103,000	4.6	197,000	8.8	2,300	6.8
June	303,000	14.0	62.1	60.8	233,000	10.7	104,000	4.8	179,000	8.2	2,300	7.6
July	352,000	15.7	69.8	67.0	232,000	10.3	100,000	4.5	186,000	8.3	2,300	6.8

¹The method of seasonal adjustment, developed by the U.S. Bureau of the Census, is described in *The X-11 Variant of the Census Method II Seasonal Adjustment Program*, Technical Paper No. 15 (1967 revision).

NOTE: Figures include all revisions received from the States and, therefore, may differ from those previously published.

Table 2. Provisional number of live births and deaths: Each division and State, July 1995 and 1996, and cumulative figures, 1994–96

[Data are estimates by State of residence; see [Technical notes](#)]

Area	Live births					Deaths				
	July		January–July			July		January–July		
	1996	1995	1996	1995	1994	1996	1995	1996	1995	1994
New England	15,035	13,567	112,871	104,351	102,072	9,687	9,622	67,508	70,482	68,060
Maine	1,329	1,263	8,070	8,097	8,290	1,135	1,004	6,562	6,726	6,516
New Hampshire	1,450	1,356	8,184	8,453	8,560	691	726	5,267	5,475	5,171
Vermont	620	519	3,995	3,926	3,965	367	352	3,007	3,091	2,742
Massachusetts	7,820	6,139	63,919	48,361	48,914	4,550	4,054	31,549	32,772	31,513
Rhode Island	1,044	1,238	7,140	7,202	7,674	715	796	5,440	5,659	5,492
Connecticut	2,772	3,052	21,563	28,312	24,669	2,229	2,690	15,683	16,759	16,626
Middle Atlantic	49,795	49,920	306,351	302,853	319,908	29,871	30,168	216,511	222,685	218,824
New York	26,371	23,142	157,629	152,341	163,498	13,845	13,825	98,525	101,701	100,263
New Jersey	9,410	13,634	60,717	60,955	64,704	5,720	5,913	42,456	44,872	42,856
Pennsylvania	14,014	13,144	88,005	89,557	91,706	10,306	10,430	75,530	76,112	75,705
East North Central	54,204	53,457	355,341	356,710	373,361	30,985	32,108	228,547	231,041	234,219
Ohio	12,845	11,991	84,472	86,358	94,879	8,540	8,616	62,357	61,602	63,609
Indiana	5,793	7,536	42,385	44,327	46,701	3,406	4,383	28,072	30,325	31,639
Illinois	17,174	16,860	106,290	107,992	109,248	8,465	8,822	61,819	63,535	63,335
Michigan	12,074	11,685	82,834	78,837	81,765	6,947	6,561	49,495	49,056	48,964
Wisconsin	6,318	5,385	39,360	39,196	40,768	3,627	3,726	26,804	26,523	26,672
West North Central	20,773	23,393	144,583	148,269	147,627	13,624	14,256	102,937	100,822	101,336
Minnesota	5,387	5,683	36,767	36,787	38,137	2,947	2,940	21,585	21,709	21,431
Iowa	3,753	3,272	19,597	19,349	20,396	2,259	2,245	18,785	15,492	15,401
Missouri	5,439	6,992	43,157	43,666	44,516	4,312	4,961	32,228	33,128	34,286
North Dakota	714	691	4,816	5,098	5,018	432	465	3,379	3,554	3,459
South Dakota	1,052	885	5,692	6,345	6,193	605	533	3,707	4,068	4,007
Nebraska	1,956	2,003	13,528	13,487	13,093	1,144	1,256	8,912	8,921	8,606
Kansas	2,472	3,867	21,026	23,537	20,274	1,925	1,856	14,341	13,950	14,146
South Atlantic	56,355	56,918	373,090	381,607	378,379	34,453	34,438	264,602	260,596	255,405
Delaware	974	1,054	5,941	6,007	5,970	502	469	3,778	3,642	3,624
Maryland	6,622	5,920	40,375	42,429	39,296	3,611	3,223	24,751	24,106	22,773
District of Columbia	702	770	4,740	5,290	5,765	480	542	3,558	3,843	4,020
Virginia	7,427	8,165	49,483	54,309	54,488	4,249	4,196	30,783	31,439	32,261
West Virginia	1,759	1,851	11,209	12,816	13,187	1,607	1,517	11,272	11,878	12,241
North Carolina	8,732	9,778	59,624	60,558	57,862	5,054	5,273	39,781	38,516	38,767
South Carolina	3,942	3,957	28,982	28,568	30,249	2,358	2,397	20,104	19,000	18,247
Georgia	10,225	7,641	66,716	65,154	62,236	4,674	4,413	36,025	34,827	33,798
Florida	15,972	17,782	106,020	106,476	109,326	11,918	12,408	94,550	93,345	89,674
East South Central	20,717	18,372	129,478	127,802	131,783	12,473	12,665	93,922	94,377	93,493
Kentucky	4,885	4,394	30,398	29,091	29,883	3,108	2,978	22,603	23,404	22,759
Tennessee	6,240	5,658	40,441	41,050	42,636	3,731	3,763	29,463	29,823	28,824
Alabama	5,563	5,876	35,600	35,730	35,528	3,442	3,677	25,810	25,272	25,825
Mississippi	4,029	2,444	23,039	21,931	23,736	2,192	2,247	16,046	15,878	16,085
West South Central	44,670	38,677	277,028	281,524	269,970	21,641	19,177	147,717	141,576	145,490
Arkansas	3,416	3,329	20,250	19,447	19,879	2,213	2,283	15,251	14,956	16,276
Louisiana	5,705	5,868	37,908	38,812	39,429	3,410	3,305	25,028	23,667	25,382
Oklahoma	3,102	4,035	25,283	26,680	26,775	2,738	2,715	19,886	19,381	19,405
Texas ¹	32,447	25,445	193,587	196,585	183,887	13,280	10,874	87,552	83,572	84,427
Mountain	24,701	20,584	149,804	144,085	144,709	11,079	10,066	74,019	68,893	67,225
Montana	978	957	6,343	6,491	6,376	624	610	4,508	4,465	4,326
Idaho	1,860	1,580	11,129	10,196	10,334	801	694	5,043	4,944	4,893
Wyoming	666	543	3,678	3,811	3,756	331	314	2,057	2,183	2,051
Colorado	4,253	4,193	28,440	30,072	31,860	1,917	1,919	15,106	14,862	14,343
New Mexico	2,893	2,443	15,795	15,629	16,352	968	1,144	7,735	7,464	7,227
Arizona	7,095	5,771	48,080	43,851	40,026	4,340	3,574	25,030	21,326	21,364
Utah	4,768	3,717	23,520	22,733	22,637	1,001	841	6,622	6,286	6,118
Nevada	2,188	1,380	12,819	11,302	13,368	1,097	970	7,918	7,363	6,903
Pacific	50,718	60,449	396,709	410,751	418,524	21,964	25,076	181,101	180,049	173,031
Washington	2,667	6,694	41,767	44,225	44,449	4,040	3,595	23,956	22,898	22,592
Oregon	3,848	3,597	26,667	26,100	25,186	1,982	2,477	16,401	16,862	16,658
California ¹	41,940	47,560	311,865	323,710	329,709	15,071	18,134	134,631	134,502	128,116
Alaska	726	828	5,697	6,149	7,941	233	242	1,421	1,308	1,373
Hawaii	1,537	1,770	10,713	10,567	11,239	638	628	4,692	4,479	4,292
Puerto Rico ²	4,781	---	---	---	---	1,951	---	---	---	---

--- Data not available.

¹Figures include adjustments for varying lengths of reporting periods; see [Technical notes](#).

²Data for Puerto Rico are not included in U.S. total figures.

NOTES: Figures include all revisions received from the States. Cumulative figures for the current year reflect revisions received for previous months, and figures for earlier years may differ from those previously published.

Table 3. Provisional number of marriages and divorces: Each division and State, July 1995 and 1996, and cumulative figures, 1994–96

[By State of occurrence. Number of events reported; see [Technical notes](#). Divorces include reported annulments]

Area	Marriages					Divorces				
	July		January–July			July		January–July		
	1996	1995	1996	1995	1994	1996	1995	1996	1995	1994
New England	¹ 8,254	10,480	¹ 41,152	48,518	53,745	3,617	3,368	20,824	23,129	21,968
Maine	---	1,382	---	5,213	4,949	630	552	2,490	2,899	2,933
New Hampshire	1,315	1,134	4,501	4,219	4,969	320	397	2,782	2,870	2,923
Vermont	814	629	2,680	2,620	2,555	265	141	1,593	1,745	1,574
Massachusetts	3,154	4,239	19,494	22,042	26,417	1,211	1,136	6,079	7,829	7,114
Rhode Island	733	837	3,955	3,559	3,549	195	305	1,810	2,175	1,903
Connecticut	2,238	2,259	10,522	10,865	11,306	996	837	6,070	5,611	5,521
Middle Atlantic	¹ 12,685	27,286	¹ 62,762	142,369	137,603	10,140	7,877	71,624	67,686	68,807
New York ²	---	14,813	---	75,850	72,514	5,420	3,034	34,679	29,859	31,887
New Jersey	4,683	5,687	25,874	27,050	27,090	1,804	1,610	15,254	14,757	14,394
Pennsylvania	8,002	6,786	36,888	39,469	37,999	2,916	3,233	21,691	23,070	22,526
East North Central	32,886	32,671	159,422	176,599	178,633	¹ 11,704	¹ 10,147	¹ 80,795	¹ 85,277	¹ 85,704
Ohio	8,837	8,945	42,919	47,963	47,899	3,954	4,052	25,110	28,986	28,514
Indiana	2,819	5,851	15,296	28,035	27,164	---	---	---	---	---
Illinois	9,913	5,953	47,561	44,775	48,870	3,551	1,913	23,413	22,786	24,257
Michigan	6,991	7,646	34,830	36,684	36,119	2,560	2,735	22,231	23,136	22,984
Wisconsin	4,326	4,276	18,816	19,142	18,581	1,639	1,447	10,041	10,369	9,949
West North Central	¹ 14,257	15,583	¹ 76,003	79,065	75,990	¹ 5,809	6,863	¹ 43,646	44,014	44,099
Minnesota	3,729	3,784	17,103	17,017	16,570	1,425	1,202	8,798	8,942	9,246
Iowa	2,582	2,713	11,706	11,881	11,625	695	805	7,128	6,217	6,500
Missouri	4,175	4,419	26,880	25,888	23,765	2,247	2,233	15,612	16,113	16,106
North Dakota	683	642	2,664	2,542	2,652	186	159	1,368	1,264	1,265
South Dakota	---	841	---	4,001	4,018	---	211	---	1,633	1,687
Nebraska	1,444	1,508	7,376	7,213	7,234	575	597	3,620	3,737	3,825
Kansas	1,644	1,676	10,274	10,523	10,126	681	1,656	7,120	6,108	5,470
South Atlantic	42,933	41,312	254,248	255,708	252,774	¹ 20,722	19,550	¹ 127,298	132,879	137,170
Delaware	410	494	2,815	2,856	2,686	261	292	1,968	2,228	2,026
Maryland	3,735	4,621	22,167	22,630	23,304	1,349	1,614	8,982	8,850	9,601
District of Columbia	156	245	1,040	1,065	833	---	147	---	852	1,371
Virginia	6,320	6,370	35,350	38,147	38,863	2,694	2,543	16,158	16,093	16,721
West Virginia	1,436	2,136	6,150	6,134	5,456	691	1,022	4,267	5,442	5,273
North Carolina	7,208	5,707	35,047	35,670	27,558	2,815	3,570	20,689	22,355	21,044
South Carolina	4,236	4,513	25,835	26,660	31,225	1,117	1,224	8,808	8,236	9,011
Georgia	5,907	5,815	35,487	35,490	35,458	2,132	2,882	19,739	21,582	21,976
Florida	13,525	11,411	90,357	87,056	87,391	9,663	6,256	46,687	47,241	50,147
East South Central	21,235	21,284	108,323	111,839	104,687	9,446	8,491	60,663	56,864	56,900
Kentucky	5,460	4,852	24,523	27,371	27,860	2,182	1,949	12,785	13,259	13,382
Tennessee	8,031	9,112	43,682	49,149	40,219	2,923	2,821	20,780	20,058	19,630
Alabama	5,251	4,957	27,274	23,050	23,205	2,190	2,700	15,464	15,685	15,566
Mississippi	2,493	2,363	12,844	12,269	13,403	2,151	1,021	11,634	7,862	8,322
West South Central	29,476	31,265	173,092	181,984	180,298	¹ 11,027	¹ 12,607	¹ 80,246	¹ 81,657	¹ 84,526
Arkansas	4,013	4,391	19,760	20,255	22,113	1,183	1,972	8,079	8,755	10,413
Louisiana	2,971	5,204	21,174	23,692	24,007	---	---	---	---	---
Oklahoma	2,510	2,766	16,236	17,016	17,536	1,441	1,668	11,637	12,646	12,492
Texas ³	19,982	18,904	115,922	121,021	116,642	8,403	8,967	60,530	60,256	61,621
Mountain	28,551	27,552	146,190	159,496	154,249	¹ 4,687	¹ 6,512	¹ 34,956	¹ 43,054	¹ 40,620
Montana	1,034	1,026	3,692	3,734	3,733	337	362	2,529	2,357	2,414
Idaho	1,644	1,657	7,939	8,413	8,395	616	565	4,156	3,886	4,287
Wyoming	632	803	2,660	2,832	2,561	221	208	1,833	1,899	1,761
Colorado	3,872	4,160	13,428	19,595	19,825	---	---	---	---	---
New Mexico ^{4,5}	1,644	1,482	9,755	8,765	7,319	831	1,172	6,580	6,734	5,806
Arizona ²	2,986	3,525	24,001	23,583	21,592	1,946	2,548	14,762	15,566	13,569
Utah	2,892	2,105	12,417	12,226	10,935	736	652	5,096	5,227	5,476
Nevada	13,847	12,794	72,298	80,348	79,889	---	1,005	---	7,385	7,307
Pacific	34,082	25,869	174,424	146,377	167,630	¹ 4,136	¹ 4,965	¹ 28,830	¹ 31,214	¹ 32,494
Washington	6,267	4,609	23,508	23,234	22,772	2,592	2,821	16,203	17,429	17,919
Oregon	2,465	3,077	12,281	14,788	14,011	851	1,205	8,202	8,850	9,844
California	22,957	15,710	124,240	94,546	117,230	---	---	---	---	---
Alaska	714	663	2,990	3,042	3,154	271	405	1,594	1,803	1,918
Hawaii	1,679	1,810	11,405	10,767	10,463	422	534	2,831	3,132	2,813
Puerto Rico ⁶	2,964	---	---	---	---	---	---	---	---	---

--- Data not available.

¹Excludes figures for State(s) shown below as not available.

²Figures for marriages are marriage licenses issued for some counties.

³Figures include adjustments for varying lengths of reporting periods; see [Technical notes](#).

⁴Figures for marriages are marriage licenses issued.

⁵Figures for divorces include estimates for some counties.

⁶Data for Puerto Rico are not included in U.S. total figures.

NOTES: Figures include all revisions received from the States. Cumulative figures for the current year reflect revisions received for previous months, and figures for earlier years may differ from those previously published.

Table 4. Provisional number of deaths under 1 year and infant mortality rates: Each division and State, 12 months ending with July 1995 and 1996

[Data are estimates by State of residence. Figures should be interpreted with caution because of conversion to place of residence; see [Technical notes](#). Infant mortality rates are deaths under 1 year per 1,000 live births in specified area]

Area	12 months ending with July			
	1996		1995	
	Number	Rate	Number	Rate
New England	868	4.9	1,018	5.7
Maine	61	4.4	93	6.6
New Hampshire	66	4.5	87	6.0
Vermont	58	8.5	45	6.3
Massachusetts	392	4.4	462	5.6
Rhode Island	84	6.6	80	6.2
Connecticut	207	5.4	251	5.5
Middle Atlantic	3,922	7.3	4,086	7.6
New York	1,983	7.4	2,097	7.8
New Jersey	795	6.9	810	7.1
Pennsylvania	1,144	7.6	1,179	7.6
East North Central	5,099	8.2	5,450	8.7
Ohio	1,249	8.1	1,314	8.6
Indiana	666	8.1	774	9.6
Illinois	1,584	8.6	1,686	9.0
Michigan	1,097	8.0	1,169	8.5
Wisconsin	503	7.5	507	7.5
West North Central	1,764	7.1	1,921	7.6
Minnesota	391	6.2	416	6.6
Iowa	209	5.7	266	7.6
Missouri	557	7.5	605	8.1
North Dakota	37	4.4	52	6.0
South Dakota	64	6.5	120	11.1
Nebraska	185	8.0	186	7.9
Kansas	321	9.3	276	7.6
South Atlantic	5,517	8.5	5,748	8.6
Delaware	63	6.3	76	7.3
Maryland	591	8.4	661	8.9
District of Columbia	136	16.2	171	18.6
Virginia	676	7.9	713	7.5
West Virginia	167	8.6	153	7.2
North Carolina	942	9.3	1,006	9.6
South Carolina	414	8.2	451	9.2
Georgia	1,086	9.5	1,047	9.4
Florida	1,442	7.7	1,470	7.8
East South Central	2,095	9.3	2,136	9.4
Kentucky	411	7.9	372	7.3
Tennessee	657	9.0	727	9.8
Alabama	626	10.3	616	10.1
Mississippi	401	10.5	421	10.1
West South Central	3,414	7.2	3,594	7.4
Arkansas	313	8.9	272	8.0
Louisiana	559	8.4	653	9.6
Oklahoma	412	9.3	393	8.6
Texas ¹	2,130	6.5	2,276	6.8
Mountain	1,705	6.9	1,721	7.1
Montana	83	7.5	95	8.5
Idaho	124	6.6	116	6.7
Wyoming	50	8.1	51	7.9
Colorado	341	7.1	361	6.9
New Mexico	170	6.2	221	8.1
Arizona	573	7.9	517	7.4
Utah	226	5.7	228	5.9
Nevada	138	6.0	132	6.8
Pacific	4,056	5.8	4,559	6.3
Washington	245	3.2	404	5.1
Oregon	232	5.3	274	6.3
California ¹	3,397	6.2	3,689	6.4
Alaska	76	7.9	70	6.8
Hawaii	106	5.7	122	6.6
Puerto Rico ²	---	---	---	---

--- Data not available.

¹Figures include adjustments for varying lengths of reporting periods; see [Technical notes](#).

²Data for Puerto Rico are not included in U.S. total figures.

NOTES: Figures include all revisions received from the States. Figures for the current year reflect revisions received for previous months, and figures for earlier years may differ from those previously published.

Table 5. Provisional number of deaths and death rates, by age, race, and sex, and age-adjusted death rates by race and sex: United States, June 1995 and 1996, cumulative figures 1995 and 1996, and 12 months ending with June 1995 and 1996

[Data are provisional, estimated from a 10-percent sample of deaths. Age-specific rates on an annual basis per 100,000 population in specified group; age-adjusted rates per 100,000 U.S. standard million population; see [Technical notes](#). Because of rounding of estimates, figures may not add to totals. For method of computation and information on standard errors of the estimates, see [Technical notes](#)]

Age, race, and sex	June				January-June				12 months ending with June							
	1996		1995		1996		1995		1996		1995					
	Number	Rate	Number	Rate	Number	Rate	Number	Rate	Number	Rate	Number	Rate				
All races, both sexes ¹																
All ages	179,000	822.5	180,000	834.9	1,191,000	905.7	1,185,000	912.1	2,315,000	876.7	2,299,000	878.6				
Under 1 year	} 3,550	74.6	3,690	77.8	14,200	² 739.7	15,000	² 785.2	28,500	² 740.0	30,500	² 794.6				
1-4 years					3,230	41.6	3,880	49.4	6,090	38.9	7,250	45.8				
5-14 years					4,250	22.2	3,820	20.2	8,660	22.6	8,370	22.1				
15-24 years					2,820	95.8	2,980	100.9	16,280	91.1	16,320	91.7	34,500	96.0	35,320	98.3
25-34 years					4,170	125.8	4,590	136.6	26,910	133.5	28,950	142.4	56,230	138.6	59,000	143.5
35-44 years					7,450	210.4	8,270	237.0	49,410	230.7	50,710	241.8	101,350	236.1	102,060	242.3
45-54 years					10,680	404.3	11,170	438.7	71,070	446.5	71,790	470.8	142,440	447.6	140,820	461.6
55-64 years					18,600	1,064.5	18,580	1,070.3	120,270	1,137.5	119,060	1,138.3	235,650	1,110.1	237,280	1,126.5
65-74 years	37,300	2,434.6	38,260	2,482.4	245,500	2,637.8	249,400	2,682.5	475,050	2,533.9	482,740	2,575.2				
75-84 years	50,560	5,410.8	50,300	5,502.0	342,360	6,073.0	336,360	6,126.8	657,570	5,823.8	648,450	5,876.8				
85 years and over	43,430	14,224.1	42,170	14,169.2	297,140	16,145.7	289,400	16,227.1	566,000	15,355.4	545,940	15,245.5				
Not stated	70	...	90	...	520	...	570	...	970	...	920	...				
Age-adjusted rate ³	468.8	...	484.1	...	509.6	...	519.8	...	498.4	...	507.2				
All races, male ¹																
All ages	91,680	864.2	92,330	876.3	601,850	937.0	599,130	944.3	1,174,490	910.8	1,168,550	914.9				
Under 1 year	} 2,070	85.0	1,950	80.3	7,610	² 775.4	8,290	² 849.1	15,640	² 793.5	16,810	² 855.9				
1-4 years					1,840	46.3	2,200	55.3	3,490	43.6	4,220	52.1				
5-14 years					2,480	25.3	2,310	24.0	5,200	26.5	5,030	25.9				
15-24 years					2,200	146.4	2,250	149.2	12,280	134.9	12,460	137.1	26,260	143.2	27,020	147.4
25-34 years					3,090	186.6	3,260	194.1	19,160	190.5	21,220	208.8	40,330	198.9	43,440	211.4
35-44 years					5,280	300.5	5,560	321.2	33,840	318.4	35,090	337.4	69,650	327.0	70,720	338.6
45-54 years					6,810	527.8	7,050	566.8	45,190	581.2	45,300	608.1	90,700	583.3	88,910	596.7
55-64 years					11,230	1,350.7	11,140	1,350.5	72,230	1,435.9	71,150	1,432.0	141,550	1,401.9	143,070	1,429.7
65-74 years	20,510	3,004.2	21,980	3,210.0	138,780	3,348.1	142,050	3,440.8	270,710	3,242.8	274,410	3,298.2				
75-84 years	25,520	6,966.7	25,140	7,093.5	169,510	7,686.2	164,730	7,753.6	323,920	7,345.1	316,230	7,416.3				
85 years and over	14,920	17,319.1	13,930	16,747.2	98,530	19,024.8	93,990	18,865.5	186,350	17,987.5	178,080	17,825.8				
Not stated	60	...	60	...	390	...	350	...	690	...	600	...				
Age-adjusted rate ³	603.6	...	622.0	...	650.5	...	666.1	...	638.5	...	651.6				
All races, female ¹																
All ages	86,950	782.7	87,790	794.9	589,240	875.9	586,060	881.2	1,138,490	842.9	1,130,060	843.9				
Under 1 year	} 1,480	63.7	1,740	75.2	6,550	² 699.0	6,650	² 715.0	12,840	² 683.3	13,650	² 728.8				
1-4 years					1,390	36.7	1,670	43.9	2,600	34.0	3,030	39.2				
5-14 years					1,770	19.0	1,510	16.5	3,460	18.5	3,340	18.1				
15-24 years					620	43.0	730	50.5	3,990	45.8	3,860	44.2	8,240	46.9	8,290	47.1
25-34 years					1,080	65.1	1,330	79.1	7,740	76.8	7,730	76.0	15,900	78.3	15,560	75.7
35-44 years					2,170	121.6	2,710	154.1	15,570	144.2	15,620	147.8	31,690	146.5	31,340	147.6
45-54 years					3,870	286.4	4,120	316.3	25,880	317.8	26,490	339.5	51,740	317.9	51,910	332.6
55-64 years					7,370	804.6	7,440	816.7	48,030	866.5	47,900	872.8	94,100	845.5	94,210	852.0
65-74 years	16,790	1,976.8	16,290	1,902.1	106,720	2,067.4	107,350	2,077.2	204,340	1,964.8	208,320	1,997.9				
75-84 years	25,040	4,407.6	25,170	4,496.8	172,850	5,036.6	171,630	5,100.0	333,650	4,848.9	332,220	4,907.2				
85 years and over	28,510	13,012.4	28,230	13,169.7	198,610	15,018.9	195,410	15,198.8	379,650	14,326.4	367,860	14,247.1				
Not stated	10	...	30	...	130	...	220	...	280	...	320	...				
Age-adjusted rate ³	356.9	...	370.4	...	393.0	...	398.6	...	381.5	...	386.9				
White																
All ages	153,900	855.3	154,780	864.1	1,027,080	942.3	1,019,670	944.9	1,989,460	908.8	1,974,480	908.5				
Under 1 year	} 2,280	60.6	2,560	68.1	9,340	² 623.7	9,760	² 655.3	19,000	² 632.1	19,820	² 659.1				
1-4 years					2,210	36.1	2,610	42.1	4,240	34.4	4,830	38.6				
5-14 years					2,950	19.5	2,750	18.4	6,290	20.7	5,960	19.8				
15-24 years					2,070	88.3	2,060	87.4	11,500	80.8	11,340	79.8	24,680	86.2	24,600	85.7
25-34 years					2,900	107.5	3,210	116.9	18,720	114.0	20,580	123.7	38,970	117.8	41,860	124.5
35-44 years					5,370	182.2	5,930	204.0	35,540	199.3	35,580	203.7	72,930	204.0	72,680	207.1
45-54 years					8,160	362.0	8,480	389.4	53,990	397.3	55,080	422.0	108,890	400.5	107,910	413.1
55-64 years					15,360	1,018.7	15,140	1,009.0	97,910	1,072.6	96,570	1,067.7	191,480	1,044.9	193,250	1,060.3
65-74 years	32,400	2,389.3	33,260	2,432.3	213,560	2,590.8	215,130	2,606.8	411,880	2,479.3	416,560	2,502.5				
75-84 years	45,630	5,385.4	45,420	5,479.0	307,780	6,021.0	302,920	6,084.8	590,540	5,768.1	583,800	5,833.9				
85 years and over	39,680	14,284.3	38,640	14,272.0	273,220	16,314.3	266,900	16,440.9	519,830	15,494.2	502,520	15,419.5				
Not stated	40	...	70	...	370	...	440	...	730	...	680	...				
Age-adjusted rate ³	446.2	...	458.4	...	483.9	...	491.3	...	472.5	...	479.2				

See footnotes at end of table.

Table 5. Provisional number of deaths and death rates, by age, race, and sex, and age-adjusted death rates by race and sex: United States, June 1995 and 1996, cumulative figures 1995 and 1996, and 12 months ending with June 1995 and 1996—Con.

[Data are provisional, estimated from a 10-percent sample of deaths. Age-specific rates on an annual basis per 100,000 population in specified group; age-adjusted rates per 100,000 U.S. standard million population; see [Technical notes](#). Because of rounding of estimates, figures may not add to totals. For method of computation and information on standard errors of the estimates, see [Technical notes](#)]

Age, race, and sex	June				January–June				12 months ending with June			
	1996		1995		1996		1995		1996		1995	
	Number	Rate	Number	Rate	Number	Rate	Number	Rate	Number	Rate	Number	Rate
White male												
All ages	78,460	888.4	78,730	896.1	513,560	960.1	509,970	963.5	999,650	930.5	992,970	931.6
Under 1 year	} 1,380	71.5	1,330	69.0	5,040	² 655.1	5,450	² 712.0	10,590	² 686.3	10,860	² 704.3
1–4 years					1,290	41.1	1,570	49.4	2,540	40.1	2,870	44.7
5–14 years					1,700	21.8	1,630	21.4	3,760	24.1	3,550	23.0
15–24 years					1,640	136.3	1,500	124.1	8,570	117.4	8,540	116.9
25–34 years	2,180	160.1	2,330	168.0	13,650	164.7	15,330	182.6	28,610	171.3	31,320	184.4
35–44 years	3,850	260.4	4,070	279.3	24,700	276.1	25,070	286.2	50,810	283.4	51,220	291.1
45–54 years	5,240	470.7	5,410	503.1	34,530	514.4	35,090	544.9	69,820	520.0	68,680	532.7
55–64 years	9,450	1,302.6	9,150	1,268.9	59,030	1,344.4	58,690	1,350.4	115,840	1,314.3	118,190	1,349.8
65–74 years	18,000	2,956.4	19,330	3,158.5	121,560	3,286.5	123,700	3,351.3	236,030	3,167.3	239,240	3,215.6
75–84 years	23,210	6,962.4	22,940	7,112.7	153,000	7,623.4	149,030	7,709.3	292,550	7,290.1	285,760	7,366.8
85 years and over	13,490	17,324.0	12,620	16,817.4	90,210	19,262.4	85,600	19,045.7	170,030	18,146.2	162,260	18,008.9
Not stated	30	...	50	...	290	...	280	...	550	...	450	...
Age-adjusted rate ³	575.9	...	588.8	...	615.9	...	629.5	...	603.9	...	615.1
White female												
All ages	75,440	823.4	76,050	833.3	513,520	925.2	509,710	927.0	989,800	887.8	981,510	886.3
Under 1 year	} 900	49.2	1,230	67.2	4,300	² 590.6	4,320	² 594.2	8,420	² 575.5	8,960	² 611.6
1–4 years					910	30.5	1,050	34.8	1,700	28.3	1,960	32.1
5–14 years					1,250	16.9	1,120	15.4	2,530	17.1	2,410	16.4
15–24 years					430	37.7	560	48.8	2,930	42.3	2,800	40.3
25–34 years	720	53.9	880	64.7	5,070	62.2	5,240	63.8	10,350	63.2	10,540	63.3
35–44 years	1,530	104.2	1,860	128.3	10,850	122.2	10,510	120.7	22,120	124.1	21,460	122.6
45–54 years	2,930	256.8	3,080	279.3	19,460	282.9	19,980	302.7	39,070	283.9	39,230	296.5
55–64 years	5,920	756.7	5,980	767.2	38,890	821.3	37,880	806.1	75,640	795.3	75,060	792.6
65–74 years	14,400	1,927.2	13,930	1,844.0	91,990	2,024.3	91,440	2,004.7	175,850	1,919.6	177,320	1,926.1
75–84 years	22,420	4,362.4	22,480	4,438.6	154,780	4,985.4	153,900	5,053.2	297,990	4,787.0	298,040	4,863.6
85 years and over	26,190	13,100.4	26,030	13,301.1	183,010	15,170.0	181,310	15,444.5	349,800	14,466.5	340,260	14,430.0
Not stated	10	...	20	...	80	...	160	...	180	...	230	...
Age-adjusted rate ³	337.9	...	350.6	...	374.3	...	376.1	...	362.3	...	365.4
Black												
All ages	21,780	791.4	22,070	810.9	144,710	869.3	145,950	891.5	285,800	856.0	285,530	867.2
Under 1 year	} 1,150	154.3	920	124.3	4,400	² 1,405.3	4,650	² 1,505.4	8,700	² 1,389.8	9,600	² 1,550.9
1–4 years					880	72.7	1,130	91.6	1,590	64.5	2,110	84.6
5–14 years					1,110	37.4	910	30.9	1,970	33.2	1,980	33.8
15–24 years					660	147.1	860	192.0	4,100	150.7	4,370	162.1
25–34 years	1,160	261.4	1,280	287.2	7,420	275.3	7,670	285.0	15,600	288.5	15,480	284.2
35–44 years	1,830	421.6	2,190	514.8	12,630	481.3	13,870	543.7	25,900	493.1	26,850	524.2
45–54 years	2,150	772.6	2,370	894.4	15,110	902.6	14,680	927.5	29,970	897.6	28,900	915.7
55–64 years	2,810	1,592.3	2,890	1,656.2	19,770	1,851.5	19,680	1,876.4	39,060	1,821.8	38,590	1,829.8
65–74 years	4,180	3,126.7	4,410	3,324.3	27,890	3,447.6	30,320	3,799.0	55,240	3,397.3	58,380	3,632.9
75–84 years	4,450	6,440.1	4,210	6,193.7	30,230	7,246.9	29,070	7,118.8	58,580	6,998.8	56,440	6,866.2
85 years and over	3,360	14,536.2	2,940	13,054.7	21,030	15,096.6	19,470	14,403.4	40,640	14,514.3	37,630	13,834.6
Not stated	30	...	10	...	150	...	120	...	230	...	220	...
Age-adjusted rate ³	685.8	...	724.0	...	760.8	...	792.6	...	752.1	...	773.3
Black male												
All ages	11,560	885.2	11,830	916.5	77,510	981.3	78,020	1,004.9	153,650	969.9	153,470	982.9
Under 1 year	} 620	164.0	540	143.8	2,330	² 1,479.5	2,510	² 1,598.1	4,580	² 1,444.8	5,320	² 1,694.3
1–4 years					470	75.7	580	92.7	820	65.6	1,140	90.2
5–14 years					650	43.8	590	40.6	1,200	39.8	1,260	42.4
15–24 years					480	213.8	700	312.8	3,240	238.0	3,480	259.1
25–34 years	860	409.4	840	398.4	5,060	397.1	5,360	420.6	10,720	418.8	10,840	420.8
35–44 years	1,240	611.7	1,390	700.3	8,250	673.1	9,150	767.4	17,120	698.5	17,770	743.8
45–54 years	1,400	1,110.5	1,450	1,207.5	9,620	1,269.5	9,090	1,264.5	18,890	1,248.5	18,060	1,262.9
55–64 years	1,560	2,033.3	1,720	2,269.7	11,660	2,514.3	10,890	2,388.7	22,780	2,444.2	21,690	2,367.9
65–74 years	2,090	3,744.2	2,320	4,200.4	14,900	4,412.6	16,060	4,837.1	30,000	4,424.8	30,800	4,610.8
75–84 years	2,060	8,133.3	1,880	7,599.1	14,230	9,302.1	13,470	9,070.3	27,090	8,852.9	26,180	8,785.2
85 years and over	1,210	18,224.7	970	14,938.8	7,000	17,443.8	6,760	17,255.7	13,730	16,950.6	12,820	16,227.8
Not stated	30	...	10	...	100	...	70	...	130	...	140	...
Age-adjusted rate ³	896.2	...	952.0	...	1,010.8	...	1,039.3	...	999.9	...	1,019.9

See footnotes at end of table.

Table 5. Provisional number of deaths and death rates, by age, race, and sex, and age-adjusted death rates by race and sex: United States, June 1995 and 1996, cumulative figures 1995 and 1996, and 12 months ending with June 1995 and 1996—Con.

[Data are provisional, estimated from a 10-percent sample of deaths. Age-specific rates on an annual basis per 100,000 population in specified group; age-adjusted rates per 100,000 U.S. standard million population; see [Technical notes](#). Because of rounding of estimates, figures may not add to totals. For method of computation and information on standard errors of the estimates, see [Technical notes](#)]

Age, race, and sex	June				January–June				12 months ending with June							
	1996		1995		1996		1995		1996		1995					
	Number	Rate	Number	Rate	Number	Rate	Number	Rate	Number	Rate	Number	Rate				
Black female																
All ages	10,230	707.4	10,240	715.7	67,200	768.3	67,930	789.3	132,150	753.1	132,060	762.9				
Under 1 year	} 520	141.6	380	104.2	2,070	² 1,342.2	2,130	² 1,403.5	4,120	² 1,333.3	4,280	² 1,403.3				
1–4 years					410	67.9	560	92.1	780	64.1	970	78.9				
5–14 years					460	31.4	320	22.3	770	26.3	720	25.0				
15–24 years					180	80.3	160	71.4	860	64.0	890	66.7	1,720	62.9	1,910	70.4
25–34 years					310	132.7	440	187.3	2,360	166.5	2,310	163.3	4,880	171.3	4,640	161.6
35–44 years	590	255.1	790	348.1	4,390	314.0	4,720	346.5	8,780	313.5	9,080	332.2				
45–54 years	750	492.7	920	634.9	5,490	598.6	5,590	645.8	11,080	606.8	10,840	628.0				
55–64 years	1,250	1,253.1	1,170	1,185.3	8,110	1,341.8	8,790	1,481.1	16,280	1,343.2	16,890	1,415.8				
65–74 years	2,090	2,684.0	2,090	2,699.4	12,990	2,754.6	14,260	3,057.8	25,250	2,663.5	27,580	2,937.2				
75–84 years	2,390	5,460.3	2,320	5,366.3	16,000	6,054.2	15,610	5,994.5	31,490	5,930.3	30,260	5,774.8				
85 years and over	2,150	13,049.7	1,970	12,291.4	14,030	14,146.2	12,710	13,248.5	26,910	13,522.6	24,810	12,854.9				
Not stated	—	...	—	...	50	...	50	...	100	...	80	...				
Age-adjusted rate ³	524.1	...	542.2	...	568.3	...	601.6	...	560.3	...	581.6				

... Category not applicable.

— Quantity zero.

¹Includes races other than white and black.

²Death rates for "Under 1 year" (based on population estimates) differ from infant mortality rates (based on live births); see [table 9](#) for infant mortality rates.

³For method of computation, see [Technical notes](#).

NOTES: Figures include all revisions received from the States. Cumulative and 12-month figures for the current year reflect revisions received for previous months, and figures for earlier years may differ from those previously published.

Table 6. Provisional number of deaths and death rates for 72 selected causes, Human immunodeficiency virus infection, and Alzheimer's disease: United States, June 1995 and 1996, cumulative figures 1995 and 1996, and 12 months ending with June 1995 and 1996

[Data are provisional, estimated from a 10-percent sample of deaths. Rates on an annual basis per 100,000 estimated population. Because of rounding of estimates, figures may not add to totals. For method of computation and information on standard errors of the estimates, see [Technical notes](#). For explanation of asterisks preceding cause-of-death categories, see [Technical notes](#)]

Cause of death (Based on the Ninth Revision, International Classification of Diseases, 1975)	June		1995		January–June		1995		12 months ending with June		1995	
	1996		1995		1996		1995		1996		1995	
	Number	Rate	Number	Rate	Number	Rate	Number	Rate	Number	Rate	Number	Rate
All causes	179,000	822.5	180,000	834.9	1,191,000	905.7	1,185,000	912.1	2,315,000	876.7	2,299,000	878.6
Shigellosis and amebiasis	—	*	—	*	—	*	—	*	—	*	—	*
Certain other intestinal infections	50	*	80	*	410	0.3	320	0.2	720	0.3	660	0.3
Tuberculosis	50	*	40	*	500	0.4	720	0.5	1,150	0.4	1,390	0.5
Tuberculosis of respiratory system	—	*	30	*	410	0.3	530	0.4	950	0.4	1,000	0.4
Other tuberculosis	—	*	10	*	90	*	190	0.1	200	0.1	390	0.1
Whooping cough	—	*	—	*	10	*	—	*	20	*	—	*
Streptococcal sore throat, scarlatina, and erysipelas	—	*	—	*	—	*	10	*	—	*	10	*
Meningococcal infection	40	*	50	*	170	0.1	230	0.2	240	0.1	360	0.1
Septicemia	1,610	7.4	1,600	7.4	11,310	8.6	11,200	8.6	21,300	8.1	20,550	7.9
Acute poliomyelitis	—	*	—	*	—	*	—	*	—	*	—	*
Measles	—	*	—	*	—	*	—	*	—	*	—	*
Viral hepatitis	350	1.6	280	1.3	1,880	1.4	1,720	1.3	3,680	1.4	3,220	1.2
Syphilis	—	*	20	*	—	*	100	*	30	*	130	0.0
All other infectious and parasitic diseases ¹	3,150	14.5	4,130	19.1	21,290	16.2	25,020	19.2	45,280	17.2	49,320	18.9
Malignant neoplasms, including neoplasms of lymphatic and hematopoietic tissues	42,460	195.5	43,410	201.1	270,730	205.9	267,610	205.9	539,560	204.4	540,280	206.5
Malignant neoplasms of lip, oral cavity, and pharynx	590	2.7	690	3.2	3,870	2.9	4,170	3.2	7,680	2.9	8,150	3.1
Malignant neoplasms of digestive organs and peritoneum	10,000	46.0	10,280	47.6	63,230	48.1	62,180	47.8	126,310	47.8	127,050	48.6
Malignant neoplasms of respiratory and intrathoracic organs	12,420	57.2	12,440	57.6	79,740	60.6	77,040	59.3	157,630	59.7	155,550	59.5
Malignant neoplasm of breast	3,550	16.3	3,560	16.5	21,980	16.7	21,960	16.9	44,030	16.7	44,220	16.9
Malignant neoplasms of genital organs	4,750	21.9	4,850	22.5	29,980	22.8	30,370	23.4	60,420	22.9	61,710	23.6
Malignant neoplasms of urinary organs	1,510	6.9	1,800	8.3	11,350	8.6	11,860	9.1	22,570	8.5	22,530	8.6
Malignant neoplasms of all other and unspecified sites	5,210	24.0	5,180	24.0	32,850	25.0	32,490	25.0	65,950	25.0	66,160	25.3
Leukemia	1,790	8.2	1,590	7.4	10,550	8.0	9,830	7.6	20,340	7.7	19,850	7.6
Other malignant neoplasms of lymphatic and hematopoietic tissues	2,630	12.1	3,020	14.0	17,180	13.1	17,700	13.6	34,630	13.1	35,070	13.4
Benign neoplasms, carcinoma in situ, and neoplasms of uncertain behavior and of unspecified nature	740	3.4	750	3.5	4,130	3.1	4,690	3.6	7,840	3.0	8,490	3.2
Diabetes mellitus	4,800	22.1	4,530	21.0	31,340	23.8	30,450	23.4	59,220	22.4	57,370	21.9
Nutritional deficiencies	260	1.2	190	0.9	2,000	1.5	1,840	1.4	3,990	1.5	3,410	1.3
Anemias	330	1.5	350	1.6	1,930	1.5	2,250	1.7	3,970	1.5	4,420	1.7
Meningitis	30	*	40	*	350	0.3	460	0.4	670	0.3	860	0.3
Major cardiovascular diseases	72,800	335.2	72,300	335.0	490,680	373.1	489,110	376.4	944,090	357.6	939,110	358.9
Diseases of heart	57,170	263.2	55,890	259.0	381,490	290.1	379,470	292.0	732,890	277.6	729,290	278.7
Rheumatic fever and rheumatic heart disease	310	1.4	350	1.6	2,600	2.0	2,690	2.1	4,940	1.9	5,200	2.0
Hypertensive heart disease	2,150	9.9	2,000	9.3	13,550	10.3	12,420	9.6	25,620	9.7	24,160	9.2
Hypertensive heart and renal disease	140	0.6	130	0.6	1,110	0.8	1,290	1.0	2,160	0.8	2,450	0.9
Ischemic heart disease	36,840	169.6	36,660	169.9	246,480	187.4	248,930	191.5	474,960	179.9	478,850	183.0
Acute myocardial infarction	16,650	76.7	16,720	77.5	111,880	85.1	113,470	87.3	215,600	81.7	220,410	84.2
Other acute and subacute forms of ischemic heart disease	170	0.8	180	0.8	1,300	1.0	1,330	1.0	2,570	1.0	2,730	1.0
Angina pectoris	100	*	50	*	420	0.3	360	0.3	790	0.3	800	0.3
Old myocardial infarction and other forms of chronic ischemic heart disease	19,920	91.7	19,720	91.4	132,880	101.0	133,780	102.9	255,990	97.0	254,910	97.4
Other diseases of endocardium	1,310	6.0	1,300	6.0	8,640	6.6	8,150	6.3	16,020	6.1	15,480	5.9
All other forms of heart disease	16,430	75.6	15,460	71.6	109,110	83.0	105,980	81.5	209,190	79.2	203,160	77.6
Hypertension with or without renal disease	940	4.3	1,050	4.9	6,410	4.9	6,590	5.1	12,300	4.7	11,720	4.5
Cerebrovascular diseases	11,510	53.0	12,080	56.0	81,620	62.1	80,910	62.2	157,470	59.6	155,420	59.4
Intracerebral and other intracranial hemorrhage	1,610	7.4	1,670	7.7	11,710	8.9	11,110	8.5	22,310	8.5	21,570	8.2
Cerebral thrombosis and unspecified occlusion of cerebral arteries	740	3.4	950	4.4	6,120	4.6	7,110	5.5	12,420	4.7	14,250	5.4
Cerebral embolism	30	*	50	*	320	0.2	290	0.2	670	0.3	720	0.3
All other and late effects of cerebrovascular diseases	9,130	42.0	9,400	43.6	63,470	48.3	62,400	48.0	122,080	46.2	118,880	45.4

See footnotes at end of table.

Table 6. Provisional number of deaths and death rates for 72 selected causes, Human immunodeficiency virus infection, and Alzheimer's disease: United States, June 1995 and 1996, cumulative figures 1995 and 1996, and 12 months ending with June 1995 and 1996—Con.

[Data are provisional, estimated from a 10-percent sample of deaths. Rates on an annual basis per 100,000 estimated population. Because of rounding of estimates, figures may not add to totals. For method of computation and information on standard errors of the estimates, see [Technical notes](#). For explanation of asterisks preceding cause-of-death categories, see [Technical notes](#)]

Cause of death (Based on the Ninth Revision, International Classification of Diseases, 1975)	June		1995		June		1995		12 months ending with June		1995		
	1996		1995		1996		1995		1996		1995		
	Number	Rate	Number	Rate	Number	Rate	Number	Rate	Number	Rate	Number	Rate	
Cerebrovascular diseases—Con.													
Atherosclerosis	440	1,110	5.1	1,370	6.3	7,970	6.0	8,840	6.8	15,520	5.9	16,910	6.5
Other diseases of arteries, arterioles, and capillaries441–448	2,080	9.6	1,910	8.8	13,190	10.0	13,300	10.2	25,900	9.8	25,770	9.8
Acute bronchitis and bronchiolitis466	40	*	40	*	290	0.2	370	0.3	460	0.2	490	0.2
Pneumonia and influenza480–487	5,860	27.0	5,390	25.0	45,440	34.5	45,130	34.7	80,470	30.5	79,180	30.3
Pneumonia480–486	5,860	27.0	5,390	25.0	44,980	34.2	44,740	34.4	79,940	30.3	78,760	30.1
Influenza487	—	*	—	*	460	0.3	400	0.3	540	0.2	420	0.2
Chronic obstructive pulmonary diseases and allied conditions490–496	8,080	37.2	8,020	37.2	57,600	43.8	57,030	43.9	104,120	39.4	102,610	39.2
Bronchitis, chronic and unspecified490–491	230	1.0	220	1.0	1,870	1.4	1,710	1.3	3,130	1.2	3,310	1.3
Emphysema492	1,220	5.6	1,440	6.7	9,380	7.1	9,950	7.6	16,850	6.4	17,910	6.8
Asthma493	430	2.0	430	2.0	2,510	1.9	3,010	2.3	5,010	1.9	5,400	2.1
Other chronic obstructive pulmonary diseases and allied conditions494–496	6,200	28.5	5,930	27.5	43,840	33.3	42,360	32.6	79,120	30.0	75,990	29.0
Ulcer of stomach and duodenum531–533	310	1.4	370	1.7	2,680	2.0	3,060	2.3	5,510	2.1	5,740	2.2
Appendicitis540–543	50	*	40	*	250	0.2	230	0.2	420	0.2	400	0.2
Hernia of abdominal cavity and intestinal obstruction without mention of hernia550–553,560	560	2.6	570	2.6	3,290	2.5	3,320	2.5	5,940	2.2	6,320	2.4
Chronic liver disease and cirrhosis571	1,950	9.0	2,060	9.5	12,350	9.4	12,970	10.0	24,470	9.3	25,790	9.9
Cholelithiasis and other disorders of gallbladder574–575	190	0.9	170	0.8	1,280	1.0	1,370	1.0	2,600	1.0	2,610	1.0
Nephritis and nephrotic syndrome, and nephrosis580–589	2,040	9.4	1,880	8.7	13,920	10.6	13,380	10.3	26,170	9.9	25,350	9.7
Acute glomerulonephritis and nephrotic syndrome580–581	10	*	10	*	100	*	130	0.1	250	0.1	220	0.1
Chronic glomerulonephritis, nephritis and nephropathy, not specified as acute or chronic, and renal sclerosis, unspecified582–583,587	160	0.7	80	*	900	0.7	610	0.5	1,620	0.6	1,420	0.5
Renal failure, disorders resulting from impaired renal function, and small kidney of unknown cause584–586,588–589	1,870	8.6	1,790	8.3	12,920	9.8	12,630	9.7	24,300	9.2	23,710	9.1
Infections of kidney590	80	*	100	*	520	0.4	400	0.3	850	0.3	880	0.3
Hyperplasia of prostate600	20	*	20	*	240	0.2	200	0.1	470	0.2	410	0.2
Complications of pregnancy, childbirth, and the puerperium630–676	20	*	20	*	160	0.1	110	0.1	370	0.1	280	0.1
Pregnancy with abortive outcome630–638	—	*	—	*	10	*	—	*	30	*	10	*
Other complications of pregnancy, childbirth, and the puerperium640–676	20	*	20	*	150	0.1	110	0.1	340	0.1	270	0.1
Congenital anomalies740–759	1,090	5.0	1,050	4.9	5,890	4.5	5,850	4.5	11,590	4.4	11,950	4.6
Certain conditions originating in the perinatal period760–779	1,070	4.9	1,170	5.4	6,380	4.8	6,670	5.1	13,120	5.0	13,820	5.3
Birth trauma, intrauterine hypoxia, birth asphyxia, and respiratory distress syndrome767–769	160	0.7	210	1.0	980	0.7	950	0.7	2,010	0.8	2,120	0.8
Other conditions originating in the perinatal period760–766,770–779	910	4.2	960	4.4	5,410	4.1	5,720	4.4	11,110	4.2	11,710	4.5
Symptoms, signs, and ill-defined conditions780–799	3,020	13.9	3,140	14.5	21,000	16.0	20,970	16.1	42,250	16.0	40,920	15.6
All other diseasesResidual	15,590	71.8	16,250	75.3	112,470	85.5	109,000	83.9	216,930	82.2	207,770	79.4
Accidents and adverse effectsE800–E949	7,590	34.9	7,280	33.7	44,230	33.6	41,960	32.3	92,070	34.9	88,200	33.7
Motor vehicle accidentsE810–E825	3,740	17.2	3,470	16.1	21,050	16.0	19,670	15.1	45,150	17.1	42,470	16.2
All other accidents and adverse effectsE800–E807,E826–E949	3,860	17.8	3,810	17.7	23,180	17.6	22,290	17.1	46,920	17.8	45,730	17.5
SuicideE950–E959	2,660	12.2	2,620	12.1	14,830	11.3	15,300	11.8	29,360	11.1	30,580	11.7
Homicide and legal interventionE960–E978	1,570	7.2	1,890	8.7	10,350	7.9	11,070	8.5	21,650	8.2	23,300	8.9
All other external causesE980–E999	190	0.9	260	1.2	1,190	0.9	1,080	0.8	2,390	0.9	2,420	0.9
Human immunodeficiency virus infection ²	*042–*044	2,580	11.9	3,610	16.7	18,190	13.8	21,550	16.6	39,010	14.8	42,770	16.3
Alzheimer's disease331.0	1,470	6.8	1,430	6.6	11,290	8.6	10,350	8.0	21,410	8.1	19,470	7.4

— Quantity zero. * Figure does not meet standards of reliability or precision; see [Technical notes](#). 0.0 Quantity more than zero but less than 0.05.

¹Includes data for deaths due to Human immunodeficiency virus infection (categories *042–*044) shown separately below; see [Technical notes](#).

²Included in All other infectious and parasitic diseases shown above.

NOTES: Figures include all revisions received from the States. Cumulative and 12-month figures for the current year reflect revisions received for previous months, and figures for earlier years may differ from those previously published.

Table 7. Provisional number of deaths and death rates for 16 selected subcategories of Malignant neoplasms, including neoplasms of lymphatic and hematopoietic tissues: United States, June 1995 and 1996, cumulative figures 1995 and 1996, and 12 months ending with June 1995 and 1996

[Data are provisional, estimated from a 10-percent sample of deaths. Rates on an annual basis per 100,000 estimated population. Because of rounding of estimates, figures may not add to totals. For method of computation and information on standard errors of the estimates, see [Technical notes](#)]

Cause of death (Based on the Ninth Revision, International Classification of Diseases, 1975)	June				January–June				12 months ending with June			
	1996		1995		1996		1995		1996		1995	
	Number	Rate	Number	Rate	Number	Rate	Number	Rate	Number	Rate	Number	Rate
Malignant neoplasms, including neoplasms of lymphatic and hematopoietic tissues ¹140–208	42,460	195.5	43,410	201.1	270,730	205.9	267,610	205.9	539,560	204.4	540,280	206.5
Malignant neoplasm of esophagus150	940	4.3	880	4.1	5,690	4.3	5,270	4.1	10,780	4.1	10,630	4.1
Malignant neoplasm of stomach151	1,090	5.0	1,040	4.8	6,520	4.9	6,860	5.3	13,470	5.1	13,870	5.3
Malignant neoplasms of colon, rectum, rectosigmoid junction, and anus153,154	4,430	20.4	4,670	21.6	28,350	21.6	28,060	21.6	56,110	21.3	58,250	22.3
Malignant neoplasm of pancreas157	2,160	9.9	2,350	10.9	13,940	10.6	13,650	10.5	27,660	10.5	27,230	10.4
Malignant neoplasms of trachea, bronchus, and lung162	12,000	55.2	12,090	56.0	77,120	58.6	74,400	57.2	152,370	57.7	150,180	57.4
Malignant melanoma of skin172	690	3.2	670	3.1	3,400	2.6	3,710	2.8	6,710	2.5	7,150	2.7
Malignant neoplasm of cervix uteri180	320	1.5	410	1.9	2,100	1.6	2,140	1.6	4,720	1.8	4,470	1.7
Malignant neoplasms of body of uterus and of uterus, part unspecified179,182	400	1.8	470	2.2	2,890	2.2	2,880	2.2	6,120	2.3	5,760	2.2
Malignant neoplasm of ovary183.0	1,170	5.4	980	4.5	6,750	5.1	6,880	5.3	13,460	5.1	13,980	5.3
Malignant neoplasm of prostate185	2,680	12.3	2,890	13.4	17,290	13.1	17,560	13.5	34,270	13.0	35,580	13.6
Malignant neoplasm of bladder188	700	3.2	880	4.1	5,660	4.3	6,080	4.7	11,120	4.2	11,120	4.3
Malignant neoplasms of kidney and other and unspecified urinary organs189	810	3.7	920	4.3	5,680	4.3	5,790	4.4	11,450	4.3	11,420	4.4
Malignant neoplasms of brain and other and unspecified parts of nervous system191,192	840	3.9	860	4.0	5,800	4.4	5,460	4.2	11,870	4.5	11,770	4.5
Hodgkin's disease201	100	*	80	*	790	0.6	750	0.6	1,570	0.6	1,550	0.6
Malignant lymphoma other than Hodgkin's disease200,202	1,760	8.1	1,850	8.6	11,050	8.4	11,580	8.9	22,740	8.6	22,860	8.7
Multiple myeloma and other immunoproliferative neoplasms203	770	3.5	1,090	5.0	5,330	4.0	5,370	4.1	10,330	3.9	10,650	4.1

* Figure does not meet standards of reliability or precision; see [Technical notes](#).

¹Includes figures for subcategories not shown below.

NOTES: Figures include all revisions received from the States. Cumulative and 12-month figures for the current year reflect revisions received for previous months, and figures for earlier years may differ from those previously published.

Table 8. Provisional number of deaths and death rates for firearm mortality: United States, June 1995 and 1996, cumulative figures 1995 and 1996, and 12 months ending with June 1995 and 1996

[Data are provisional, estimated from a 10-percent sample of deaths. Rates on an annual basis per 100,000 estimated population. Because of rounding of estimates, figures may not add to totals. For method of computation and information on standard errors of the estimates, see [Technical notes](#)]

Cause of death (Based on the Ninth Revision, International Classification of Diseases, 1975)	June				January–June				12 months ending with June			
	1996		1995		1996		1995		1996		1995	
	Number	Rate	Number	Rate	Number	Rate	Number	Rate	Number	Rate	Number	Rate
Injury by firearms.E922,E955.0–E955.4,E965.0–965.4,E970,E985.0–E985.4	2,750	12.7	2,900	13.4	17,300	13.1	17,750	13.7	35,100	13.3	37,370	14.3
Accident caused by firearm missileE922	70	*	70	*	600	0.5	610	0.5	1,350	0.5	1,450	0.6
Suicide by firearmsE955.0–E955.4	1,530	7.0	1,450	6.7	9,270	7.0	9,150	7.0	18,100	6.9	18,780	7.2
Homicide and legal intervention by firearms.E965.0–E965.4,E970	1,130	5.2	1,350	6.3	7,300	5.5	7,850	6.0	15,400	5.8	16,810	6.4
Injury by firearms, undetermined whether accidentally or purposely inflicted.E985.0–E985.4	20	*	20	*	130	0.1	140	0.1	240	0.1	320	0.1

* Figure does not meet standards of reliability or precision; see [Technical notes](#).

NOTES: Figures include all revisions received from the States. Cumulative and 12-month figures for the current year reflect revisions received for previous months, and figures for earlier years may differ from those previously published.

Table 9. Provisional number of deaths under 1 year and infant mortality rates, by age and for 10 selected causes: United States, June 1995 and 1996, cumulative figures 1995 and 1996, and 12 months ending with June 1995 and 1996

[Data are provisional, estimated from a 10-percent sample of deaths. Rates on an annual basis per 100,000 live births. Because of rounding of estimates, figures may not add to totals. For method of computation and information on standard errors of the estimates, see [Technical notes](#)]

	June		January–June				12 months ending with June					
	1996		1995		1996		1995		1996		1995	
	Number	Rate	Number	Rate	Number	Rate	Number	Rate	Number	Rate	Number	Rate
<i>Age and cause of death (Based on the Ninth Revision, International Classification of Diseases, 1975)</i>												
Total, under 1 year	2,300	756.2	2,400	747.7	14,200	740.6	15,000	772.8	28,500	737.4	30,500	772.8
Under 28 days	1,630	529.9	1,560	487.2	9,130	477.5	9,360	483.2	18,450	477.6	19,460	493.2
28 days–11 months	690	224.3	820	256.1	5,020	262.6	5,580	288.1	10,030	259.7	11,000	278.8
Certain gastrointestinal diseases.008–009,535,555–558	20	*	20	*	100	*	120	6.2	170	4.4	270	6.8
Pneumonia and influenza.480–487	20	*	20	*	190	9.9	210	10.8	340	8.8	350	8.9
Congenital anomalies740–759	560	182.1	440	137.4	3,220	168.4	3,200	165.2	6,190	160.2	6,800	172.3
Disorders relating to short gestation and unspecified low birthweight765	370	120.3	270	84.3	1,980	103.6	1,880	97.1	3,660	94.8	3,770	95.5
Birth trauma767	20	*	10	*	110	5.8	70	*	240	6.2	150	3.8
Intrauterine hypoxia and birth asphyxia768	40	*	70	*	280	14.6	250	12.9	500	12.9	590	15.0
Respiratory distress syndrome.769	100	*	130	40.6	560	29.3	590	30.5	1,190	30.8	1,310	33.2
Other conditions originating in the perinatal period.760–764,766,770–779	540	175.6	680	212.4	3,390	177.3	3,760	194.1	7,380	191.1	7,790	197.4
Sudden infant death syndrome798.0	240	78.0	280	87.4	1,510	79.0	1,690	87.3	2,740	70.9	3,380	85.7
All other causesResidual	420	136.6	460	143.7	2,810	147.0	3,180	164.2	6,070	157.1	6,050	153.3

* Figure does not meet standards of reliability or precision; see [Technical notes](#).

NOTES: Figures include all revisions received from the States. Cumulative and 12-month figures for the current year reflect revisions received for previous months, and figures for earlier years may differ from those previously published.

Technical notes

Nature and sources of data

Data in this report are provisional unless otherwise specified and include only events occurring within the United States (50 States and the District of Columbia). Mortality data exclude fetal deaths. Data for the Commonwealth of Puerto Rico are not included in the U.S. totals.

Birth, death, and infant death figures in [tables 2](#) and [4](#) for each State are estimates by State of residence. These estimates are derived by applying adjustment ratios to the actual counts of certificates for all events occurring in the State and received in registration offices during a 1-month period regardless of date of the event. The adjustment ratios for each data year represent the observed relationship between final State occurrence and residence figures for the three most recent years for which final data were available and are expressed as a single ratio for each State. As in previous years, monthly State marriage and divorce figures represent the actual count of all events occurring in the State (State of occurrence) that were received in the registration offices during the 1-month period. Delay in the receipt of certificates in a registration office may result in a low State figure for a given month followed by a high figure for the month(s) in which the delayed records are received. Data for previous months and cumulative data include revised figures received from the States.

Figures for births, deaths, and infant deaths for California in [tables 2](#) and [4](#) contain adjustments for varying lengths of State reporting periods. Figures for Texas for all events shown in [tables 2–4](#) also are adjusted for varying lengths of State reporting periods. The figures for both States are adjusted by the ratio between the number of days in the data month and the number of days in the State reporting period. The adjusted figures are included in the U.S. totals shown elsewhere in this report.

U.S. totals for births, deaths, and infant deaths are based on the State estimates by State of residence and, therefore, in effect, exclude events to nonresidents of the United States. Events to nonresidents of the United States are included in all

marriage and divorce figures. The effect of excluding events to nonresidents from the U.S. totals is small.

Provisional totals for the United States include estimates for State data shown as not available. Provisional totals for births and marriages for the entire United States include adjustments for observed differences between provisional and final monthly figures.

Divorce figures include reported annulments. The monthly national divorce estimate is obtained by multiplying the total for the reporting areas by the ratio observed between the most recent final annual divorce total for the United States and the provisional total for the reporting areas combined.

Random variation—Although the counts in this report are not subject to sampling variability (except the Current Mortality Sample), they may be affected by random variation. When the number of events is small and the probability of such an event is small, considerable caution must be observed in interpreting the data. Such infrequent events may be assumed to follow a Poisson probability distribution. For this distribution a simple approximation may be used to estimate the random variation as follows:

If N is the number of events in the population and R is the corresponding rate, the chances are 19 in 20 that

$$1. N - 2\sqrt{N} \text{ and } N + 2\sqrt{N}$$

covers the “true” number of events.

$$2. R - 2 \frac{R}{\sqrt{N}} \text{ and } R + 2 \frac{R}{\sqrt{N}}$$

covers the “true” rate.

If the rate R_1 corresponding to N_1 events is compared with the rate R_2 corresponding to N_2 events, the difference between the two rates may be regarded as statistically significant at the 0.05 level if it exceeds

$$2 \sqrt{\frac{R_1^2}{N_1} + \frac{R_2^2}{N_2}}$$

Additional information on random variation in numbers of events, rates, and ratios may be found in the technical appendixes of *Vital Statistics of the United States, 1990, Volumes I and II*.

Rates

Rates are on an annual basis and, except for infant mortality rates, are per 1,000 or 100,000 estimated population residing in the United States. The populations used for computing these rates are furnished by the U.S. Bureau of the Census. Rates shown in this report beginning with 1992 were computed using populations based on the 1990 Census enumeration comparable to those used for final data. Monthly rates are based on populations estimated for the specific month. Year-to-date rates are averages of monthly rates that have been weighted by the number of days in the corresponding months. Rates for 12-month periods are the sum of events for the period per population estimated at the midpoint of the period.

Infant mortality rates are deaths under 1 year of age for the specified period (monthly, year-to-date, or 12-month period) per 1,000 or 100,000 live births. Births used for computing monthly and year-to-date infant mortality rates are adjusted for monthly variation in the number of births. Births used to compute 12-month rates do not contain this adjustment. Births used for computing infant mortality rates are not corrected for observed differences between provisional and final monthly figures as described earlier in “Nature and sources of data.” Because monthly infant mortality rates are based on relatively few events, they are highly variable. Therefore, comparisons of monthly infant mortality rates should be interpreted cautiously; see “[Random variation](#).”

Age-adjusted death rates are used to compare relative mortality risks across groups and over time. However, they should be viewed as constructs or indexes rather than as direct or actual measures of mortality risk. Statistically, they are weighted averages of the age-specific death rates, where the weights represent the fixed population proportions by age. See chapter 5 of an earlier report (1). The age-adjusted death rates presented in this report were computed by the direct method, that is, by applying age-specific death rates to the U.S. standard million population (2). See also chapter 10 of an earlier report (1). Age groups in [table 5](#) were used to compute the age-adjusted

rates shown in that table. It is important not to compare age-adjusted rates with crude rates.

Current Mortality Sample

The Current Mortality Sample (CMS) is a 10-percent systematic sample of death certificates drawn each month after the certificates are counted in the State registration offices. Deaths and death rates for the United States by age, race, sex, and cause are estimated based on the sample. Because of the additional time required to select and process the certificates, data based on the CMS are published 1 month after publication of the U.S. and State counts. Complete information concerning the underlying cause of death sometimes is not available when the sample is drawn. As a result estimates based on sample counts for certain causes are biased. Correction for bias is not made in this report.

Estimated numbers of deaths based on the sample were proportionately adjusted to be consistent with estimates based on the count of death certificates received in State registration offices.

HIV infection—Beginning with data for 1987, the National Center for Health Statistics introduced categories *042–*044 for classifying and coding Human immunodeficiency virus (HIV) infection. The asterisks before the categories indicate that these codes are not part of the

Ninth Revision, International Classification of Diseases. Deaths classified to these categories are included in All other infectious and parasitic diseases in the List of 72 Selected Causes of Death and are also shown separately at the bottom of table 6.

Sampling variability—Because the estimates of deaths and death rates presented in this report with the exception of total deaths and deaths under 1 year are based on a sample of death certificates, they are subject to sampling variability. The estimated relative standard error in the following table is a measure of the

Relative standard errors for estimated numbers of deaths from the Current Mortality Sample expressed as a percent of the estimate

Estimated number of deaths	Relative standard error of estimate (as percent)	
	170,000 estimated deaths each month	2,000,000 estimated deaths each year
10	94.9	94.9
20	67.1	67.1
50	42.4	42.4
100	30.0	30.0
200	21.2	21.2
500	13.4	13.4
1,000	9.5	9.5
2,000	6.7	6.7
5,000	4.2	4.2
10,000	2.9	3.0
20,000	2.0	2.1
50,000	1.1	1.3
100,000	0.6	0.9
200,000	0.6
500,000	0.4
1,000,000	0.2

sampling error of the estimated number of deaths (or of the estimated death rate) expressed as a percent of the estimate. The first column refers to monthly estimates; the second to annual; cumulative year-to-date totals fall between the two.

The chances are about 2 in 3 that the percent difference between an estimate and the result of a complete count is less than the percent shown. The chances are about 19 in 20 that the percent difference is less than twice the percent shown. A figure based on 100 or fewer estimated deaths has a relative standard error of 30 percent or more and is, therefore, considered unreliable. A rate based on 100 or fewer estimated deaths has been replaced by an asterisk.

Unless otherwise specified comparisons made in the text between death rates based on the CMS were statistically significant at the 0.05 level of significance. Lack of comment in the text about any two rates does not mean that the difference was tested and found not to be significant at this level.

References

1. Feinleib M, Zarate AO, eds. Reconsidering age adjustment procedures: Workshop proceedings. National Center for Health Statistics. Vital Health Stat 4(29). 1992.
2. Grove RD, Hetzel AM. Vital statistics rates in the United States, 1940–1960. Public Health Service. Washington: National Center for Health Statistics. 1968.

Suggested citation

National Center for Health Statistics. Births, marriages, divorces, and deaths for July 1996. Monthly vital statistics report; vol 45 no 7. Hyattsville, Maryland: National Center for Health Statistics. 1997.

Copyright information

All material appearing in this report is in the public domain and may be reproduced or copied without permission; citation as to source, however, is appreciated.

National Center for Health Statistics

Director
Edward J. Sondik, Ph.D.

Deputy Director
Jack R. Anderson

Division of Vital Statistics

Director
Mary Anne Freedman

**DEPARTMENT OF
HEALTH & HUMAN SERVICES**

Centers for Disease Control and Prevention
National Center for Health Statistics
6525 Belcrest Road
Hyattsville, Maryland 20782

FIRST CLASS MAIL
POSTAGE & FEES PAID
PHS/NCHS
PERMIT NO. G-281

**OFFICIAL BUSINESS
PENALTY FOR PRIVATE USE, \$300**

To receive this publication regularly, contact the National Center for Health Statistics by calling 301-436-8500
E-mail: nchsquery@nch10a.em.cdc.gov
Internet: <http://www.cdc.gov/nchswww/nchshome.htm>

DHHS Publication No. (PHS) 97-1120
7-0204 (2/97)