

# Monthly Vital Statistics Report



Provisional Data From the CENTERS FOR DISEASE CONTROL AND PREVENTION/National Center for Health Statistics

## Births, Marriages, Divorces, and Deaths for May 1996

### Births

According to provisional reports, an estimated 344,000 births occurred in the United States during May 1996. This was a 7-percent increase from the provisional number of births reported for May 1995 (321,000). The birth rate, 15.3 live births per 1,000 population, was 6 percent higher than the rate of 14.4 for May 1995. The fertility rate, 68.1 live births per 1,000 women 15–44 years, was 7 percent higher than the comparable rate for May 1995 (63.5). The seasonally adjusted fertility rate (68.6) was 7 percent higher than the comparable rate for May 1995 (64.0).

During the first 5 months of 1996, an estimated 1,609,000 births occurred, the same number reported for the first 5 months of 1995. The birth rate for this period decreased by 1 percent from 14.8 in 1995 to 14.7 in 1996. The fertility rate for the first 5 months of 1996 was 65.1, 1 percent lower than the rate for the first 5 months of 1995 (65.5).

An estimated 3,892,000 live births occurred in the 12-month period ending with May 1996, a decline of 2 percent from the 3,962,000 births reported for the same period a year earlier. The birth rate of 14.8 was 3 percent lower than the rate of 15.2 for the preceding 12-month period.

The fertility rate for the most recent 12-month period was 65.4, 2 percent lower than the rate for the 12 months ending with May 1995 (66.7). These lower rates continue the generally downward trend observed since early 1991.

### Natural increase

As a result of natural increase, the excess of births over deaths, an estimated 147,000 people, or 6.5 persons per 1,000 population, were added to the population during May 1996.

For the 12-month period ending with May 1996, 1,573,000 persons were added

### Provisional Vital Statistics for the United States

[Rates for infant deaths are deaths under 1 year per 1,000 live births; fertility rates are live births per 1,000 women aged 15–44 years; all other rates are per 1,000 total population. Data are subject to monthly reporting variation; see [Technical notes](#)]

Item	May				January–May				12 months ending with May				
	Number		Rate		Number		Rate		Number		Rate		
	1996	1995	1996	1995	1996	1995	1996	1995	1996	1995	1996	1995	1994
Live births . . . . .	344,000	321,000	15.3	14.4	1,609,000	1,609,000	14.7	14.8	3,892,000	3,962,000	14.8	15.2	15.5
Fertility rate . . . . .	...	...	68.1	63.5	...	...	65.1	65.5	...	...	65.4	66.7	67.7
Deaths . . . . .	197,000	184,000	8.8	8.2	1,016,000	1,005,000	9.3	9.3	2,319,000	2,295,000	8.8	8.8	8.8
Infant deaths . . . . .	2,400	2,500	7.0	7.5	11,900	12,600	7.4	7.8	28,600	30,600	7.4	7.8	8.1
Natural increase . . . . .	147,000	137,000	6.5	6.2	593,000	604,000	5.4	5.5	1,573,000	1,667,000	6.0	6.4	6.7
Marriages . . . . .	237,000	238,000	10.6	10.7	813,000	809,000	7.6	7.6	2,341,000	2,355,000	8.9	9.0	9.0
Divorces . . . . .	104,000	103,000	4.6	4.6	475,000	485,000	4.3	4.5	1,159,000	1,184,000	4.4	4.5	4.6
Population base (in millions) . . . . .	...	...	264.8	262.4	...	...	...	...	...	...	263.8	261.5	259.2

... Category not applicable.

NOTES: Figures include revisions received from the States. Twelve-month figures for the current year reflect revisions received for previous months, and figures for earlier years may differ from those previously published.



U.S. DEPARTMENT OF HEALTH AND HUMAN SERVICES  
Public Health Service  
Centers for Disease Control and Prevention  
National Center for Health Statistics



to the population. This represented a rate of natural increase of 6.0, 6 percent lower than the rate of 6.4 for the preceding 12-month period. The decline in the rate of natural increase was due to a decrease in the birth rate and a constant death rate.

**Marriages**

The estimated number of marriages performed in May 1996 was 237,000, a decrease of less than 1 percent from the number for May 1995 (238,000). The marriage rate per 1,000 population for May was 1 percent lower in 1996 (10.6) than in 1995 (10.7).

The cumulative number of marriages for January–May 1996 (813,000) increased less than 1 percent from the number for the same period a year earlier (809,000). The rate of marriages for this period in 1996 (7.6) was unchanged from the cumulative rate for 1995.

The number of marriages for the 12 months ending with May 1996 (2,341,000) was 1 percent less than the number for the 12 months ending with May 1995 (2,355,000), while the marriage rate for the 1996 12-month period (8.9) was also 1 percent less than the rate for the same period a year ago (9.0).

**Divorces**

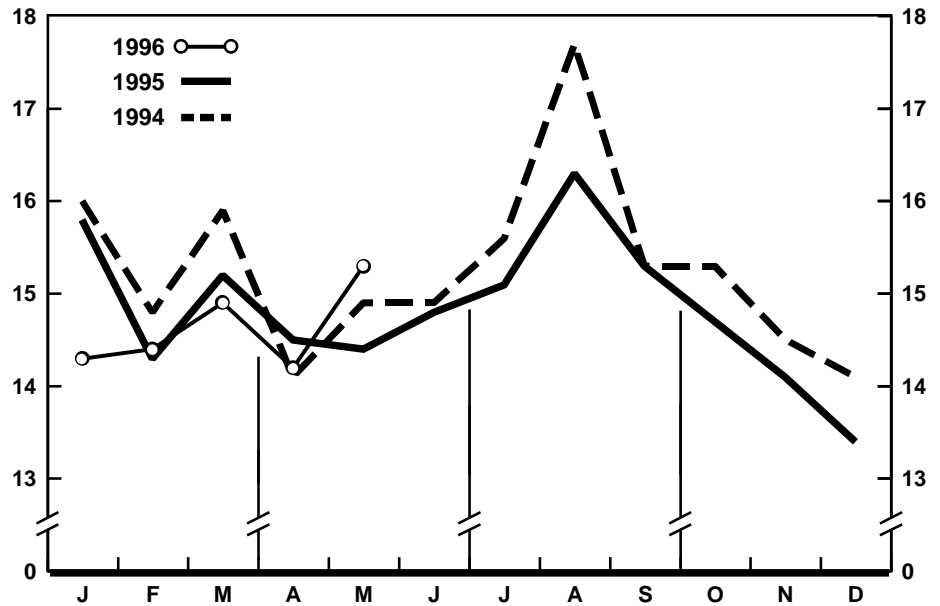
Divorces granted in May 1996 numbered 104,000, 1 percent more than in May a year earlier (103,000). The divorce rate per 1,000 population for May was the same in 1996 as in 1995 (4.6).

The number of divorces for January–May 1996 (475,000) decreased 2 percent from the number for the same period in 1995 (485,000). The divorce rate for this period in 1996 (4.3) declined 4 percent from the rate in 1995 (4.5).

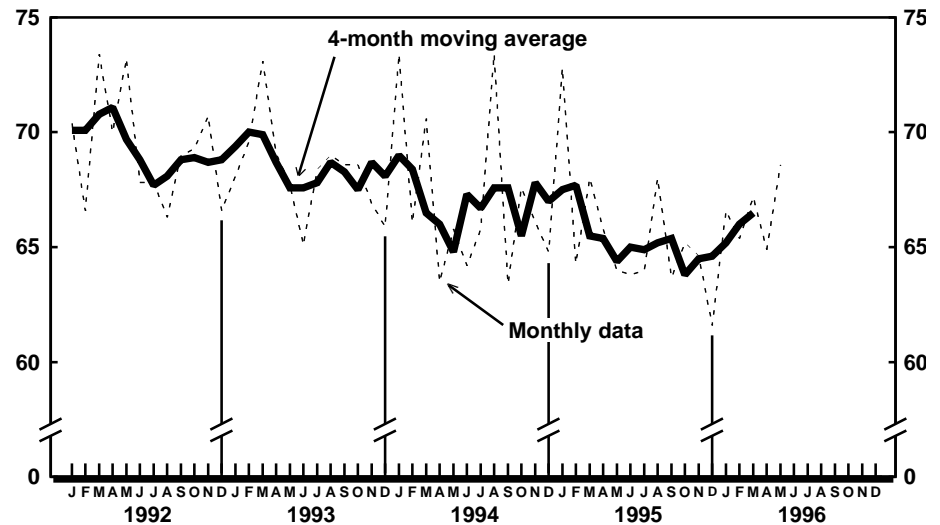
The number and the rate of divorces granted during the 12 months ending with May 1996 were 2 percent lower than the comparable figures for 1995. The number of divorces decreased from 1,184,000 for the 12-month period ending with May 1995 to 1,159,000 for the current 12-month period, while the rate decreased from 4.5 to 4.4.

**Deaths**

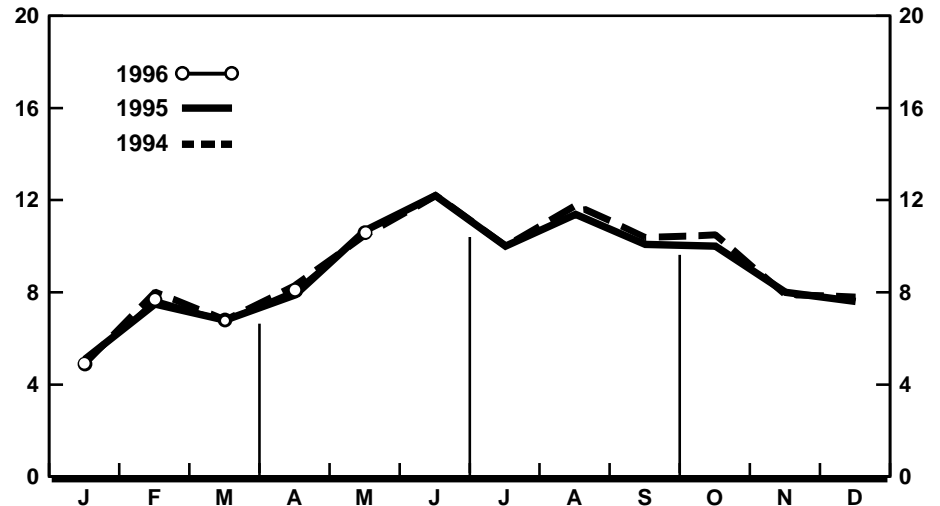
For May 1996 there were an estimated 197,000 deaths in the United



Provisional birth rates per 1,000 population by month: United States, 1994–96



Provisional seasonally adjusted fertility rates per 1,000 women aged 15–44 years: United States, 1992–96



Provisional marriage rates per 1,000 population by month: United States, 1994–96

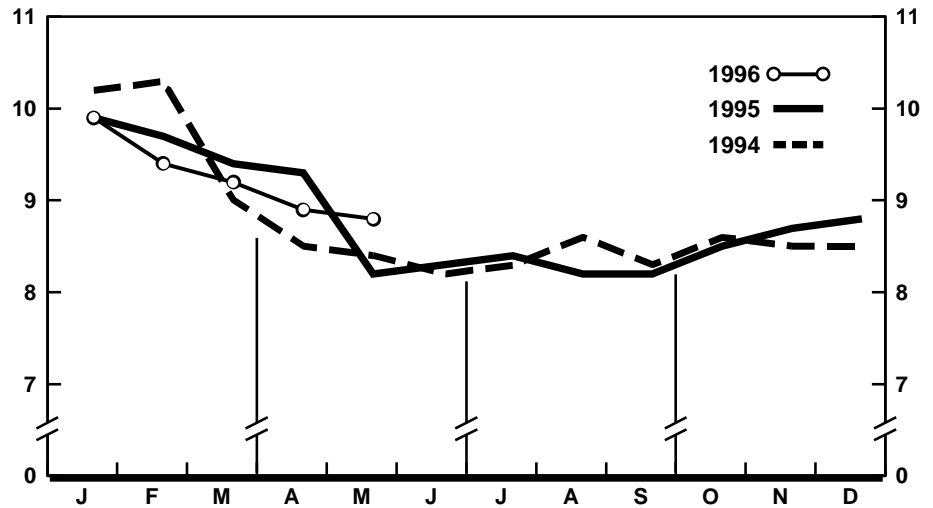
States. The death rate was 8.8 deaths per 1,000 population, 7 percent higher than the rate of 8.2 for May a year earlier. Among the 197,000 deaths for May 1996 were 2,400 deaths at ages under 1 year.

According to provisional statistics, there were 1,016,000 deaths during the first 5 months of 1996, 1 percent more than estimated for the first 5 months of 1995 (1,005,000). The death rate, 9.3 per 1,000 population, was the same as the rate for January–May 1995. Among the 1,016,000 deaths for the first 5 months of 1996 were 11,900 deaths at ages under 1 year, yielding an infant mortality rate of 7.4 per 1,000 live births. This rate was 5 percent lower than the rate of 7.8 for the first 5 months of 1995.

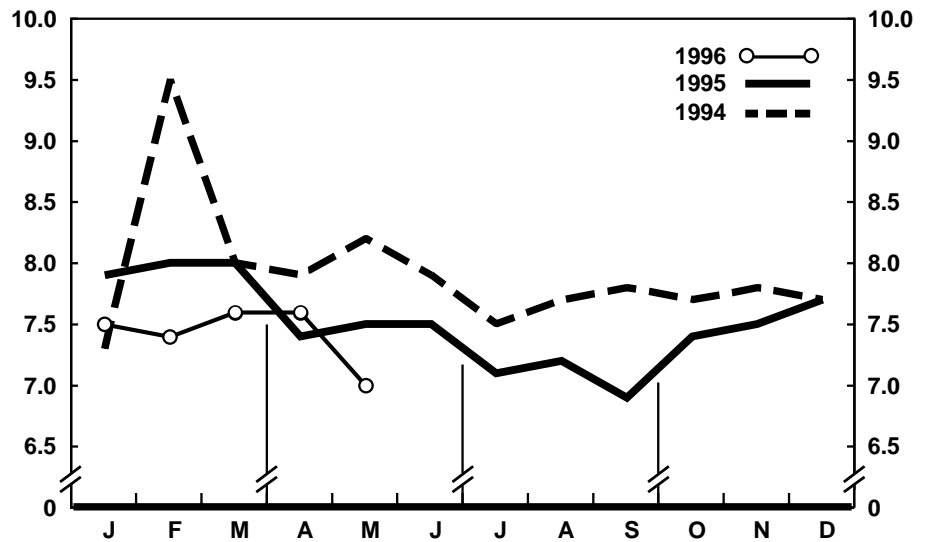
The death rate for the 12 months ending with May 1996 was 8.8 deaths per 1,000 population, the same as the rate for the comparable 12-month period a year earlier. The infant mortality rate for this 12-month period was 7.4 per 1,000 live births, 5 percent lower than the rate of 7.8 for the 12 months ending with May 1995.

*Current Mortality Sample, 12 months ending with April 1996*—The provisional death rate for the 12 months ending with April 1996 was 874.7 per 100,000 population, less than 1 percent below the rate of 878.1 for the 12-month period ending April 1995. The provisional age-adjusted death rate for the 12-month period ending with April 1996 was 498.5 per 100,000 U.S. standard million population, 2.3 percent lower than the rate of 510.4 for the 12-month period ending with April 1995. Age-adjusted death rates control for changes and variations in the age composition of the population; therefore, they are better indicators than crude rates for showing changes in mortality risk over time and for showing differences between race-sex groups within the population. The estimated age-adjusted death rates decreased for all the major race-sex groups. By age the death rate for the total population decreased for all age groups except 5–14 years, 15–24 years, 45–54 years, and 85 years and over.

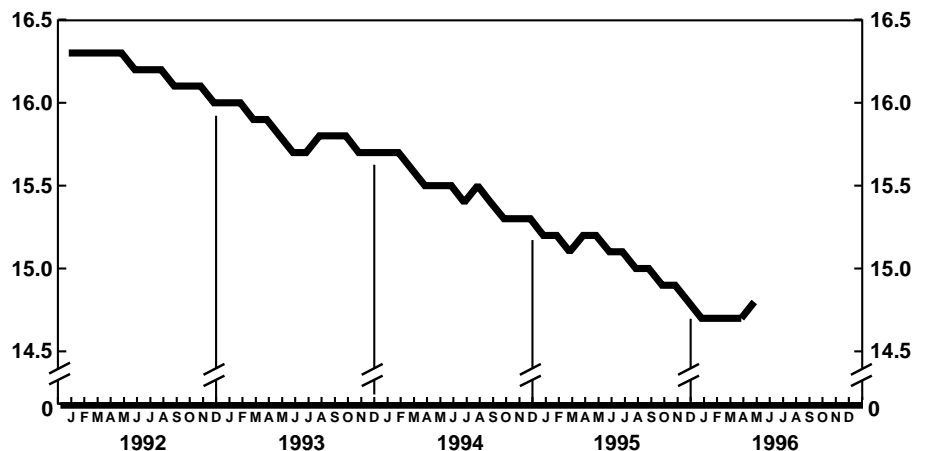
Among the major causes of death, the estimated death rate decreased between the two successive 12-month periods for Chronic liver disease and cirrhosis and Malignant neoplasms of genital organs. The death rate increased between the two



Provisional death rates per 1,000 population by month: United States, 1994–96



Provisional infant mortality rates per 1,000 live births by month: United States, 1994–96

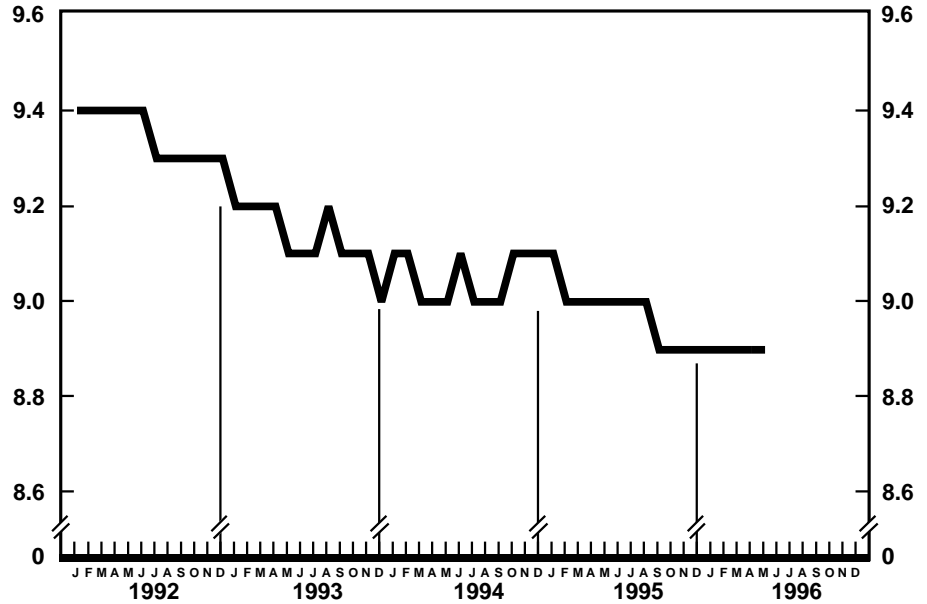


Provisional birth rates per 1,000 population for successive 12-month periods ending with month indicated: United States, 1992–96

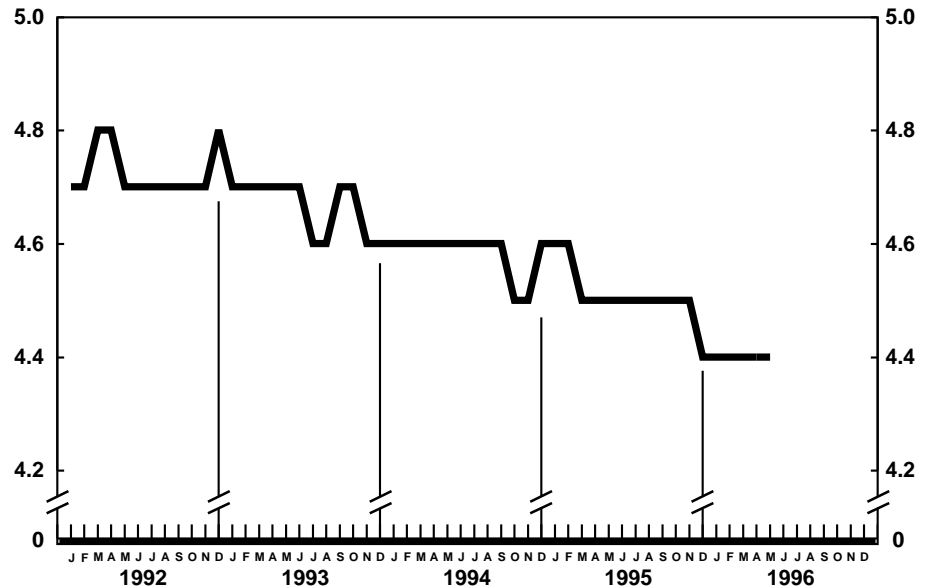
successive 12-month periods for Alzheimer's disease. The increase for Alzheimer's disease may reflect changes in diagnostic practices rather than real increases in mortality from this cause.

The death rate for injury by firearms for the 12 months ending with April 1996 was 13.3 per 100,000 population, 8.9 percent less than the rate of 14.6 for the comparable 12-month period a year earlier.

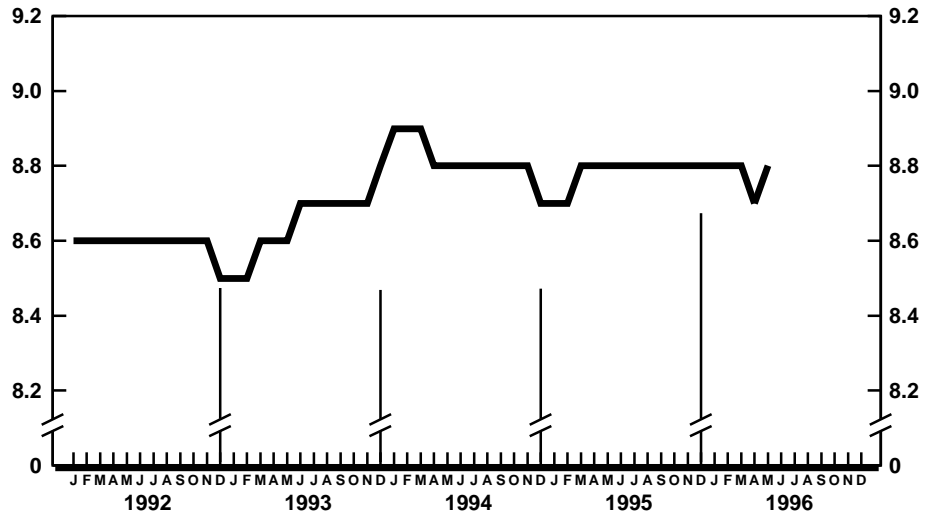
The infant mortality rate for the 12 months ending with April 1996 was 745.3 per 100,000 live births, 4.6 percent lower than the rate of 781.2 for the same 12-month period a year earlier. For infants under 28 days, the 12-month rate ending April 1996 was 478.7 compared with a rate of 494.9 for the 12-month period a year earlier. The infant mortality rate for infants 28 days–11 months was 265.7 compared with a rate of 287.6 for the 12-month period a year earlier. The changes in the mortality rates for infants under 28 days and for those 28 days–11 months were not statistically significant.



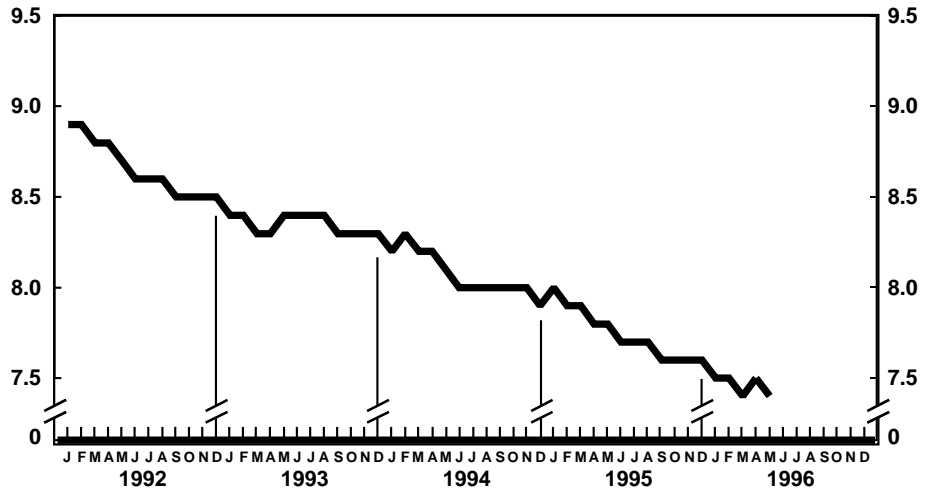
Provisional marriage rates per 1,000 population for successive 12-month periods ending with month indicated: United States, 1992-96



Provisional divorce rates per 1,000 population for successive 12-month periods ending with month indicated: United States, 1992-96



Provisional death rates per 1,000 population for successive 12-month periods ending with month indicated: United States, 1992-96



Provisional infant mortality rates per 1,000 live births for successive 12-month periods ending with month indicated: United States, 1992-96

**Table 1. Provisional number of live births, marriages, divorces, deaths, and infant deaths and rates, by month: United States, January 1995–May 1996**[Data are provisional and are subject to monthly reporting variation; see [Technical notes](#)]

Period	Live births				Marriages		Divorces		Deaths		Infant deaths	
	Number	Rate per 1,000 women aged 15–44 years			Number	Rate per 1,000 population	Number	Rate per 1,000 population	Number	Rate per 1,000 population	Number	Rate per 1,000 live births
		Rate per 1,000 population	Unadjusted	Seasonally adjusted <sup>1</sup>								
<b>1995:</b>												
January . . . . .	350,000	15.8	69.4	72.8	111,000	5.1	96,000	4.3	220,000	9.9	2,700	7.9
February . . . . .	287,000	14.3	63.1	64.3	146,000	7.5	89,000	4.4	194,000	9.7	2,400	8.0
March . . . . .	338,000	15.2	67.1	68.0	148,000	6.8	98,000	4.4	208,000	9.4	2,700	8.0
April . . . . .	313,000	14.5	64.1	65.8	165,000	7.9	98,000	4.6	200,000	9.3	2,300	7.4
May . . . . .	321,000	14.4	63.5	64.0	238,000	10.7	103,000	4.6	184,000	8.2	2,500	7.5
June . . . . .	318,000	14.8	65.2	63.8	263,000	12.2	104,000	4.8	180,000	8.3	2,400	7.5
July . . . . .	337,000	15.1	66.6	64.0	224,000	10.0	97,000	4.4	188,000	8.4	2,400	7.1
August . . . . .	364,000	16.3	72.1	68.0	254,000	11.4	99,000	4.4	184,000	8.2	2,400	7.2
September . . . . .	331,000	15.3	67.6	63.7	219,000	10.1	99,000	4.6	178,000	8.2	2,200	6.9
October . . . . .	328,000	14.7	64.9	65.2	224,000	10.0	98,000	4.4	190,000	8.5	2,500	7.4
November . . . . .	306,000	14.1	62.6	64.6	174,000	8.0	95,000	4.4	188,000	8.7	2,300	7.5
December . . . . .	300,000	13.4	59.3	61.6	169,000	7.6	92,000	4.1	197,000	8.8	2,400	7.7
<b>1996:</b>												
January . . . . .	320,000	14.3	63.5	66.6	106,000	4.9	97,000	4.3	221,000	9.9	2,400	7.5
February . . . . .	302,000	14.4	64.1	65.4	155,000	7.7	86,000	4.1	198,000	9.4	2,300	7.4
March . . . . .	334,000	14.9	66.3	67.2	147,000	6.8	94,000	4.2	206,000	9.2	2,500	7.6
April . . . . .	309,000	14.2	63.3	64.9	169,000	8.1	96,000	4.4	194,000	8.9	2,400	7.6
May . . . . .	344,000	15.3	68.1	68.6	237,000	10.6	104,000	4.6	197,000	8.8	2,400	7.0

<sup>1</sup>The method of seasonal adjustment, developed by the U.S. Bureau of the Census, is described in *The X-11 Variant of the Census Method II Seasonal Adjustment Program*, Technical Paper No. 15 (1967 revision).

NOTE: Figures include all revisions received from the States and, therefore, may differ from those previously published.

**Table 2. Provisional number of live births and deaths: Each division and State, May 1995 and 1996, and cumulative figures, 1994–96**

[Data are estimates by State of residence; see [Technical notes](#)]

Area	Live births					Deaths				
	May		January–May			May		January–May		
	1996	1995	1996	1995	1994	1996	1995	1996	1995	1994
New England	26,790	16,243	81,128	75,162	72,653	9,701	8,401	48,378	50,619	51,153
Maine	1,316	1,178	5,560	5,521	5,799	765	903	4,726	4,718	4,833
New Hampshire	1,380	743	5,372	5,587	6,076	815	738	3,873	4,040	3,853
Vermont	719	522	2,830	2,743	2,603	443	463	2,174	2,309	1,982
Massachusetts	19,027	7,961	46,901	34,660	34,951	4,373	3,396	22,212	24,012	24,197
Rhode Island	1,070	1,258	5,096	4,937	5,266	844	766	4,030	4,169	4,038
Connecticut	3,278	4,581	15,369	21,714	17,958	2,461	2,135	11,363	11,371	12,250
Middle Atlantic	44,842	40,624	214,179	209,302	224,558	32,072	29,807	159,545	163,582	159,983
New York	22,963	21,885	111,142	106,084	115,925	15,789	13,769	72,726	74,553	72,397
New Jersey	9,427	6,351	40,945	40,056	43,698	5,712	6,215	31,010	33,288	31,412
Pennsylvania	12,452	12,388	62,092	63,162	64,935	10,571	9,823	55,809	55,741	56,174
East North Central	50,102	53,859	251,111	250,902	265,272	30,150	32,370	166,537	168,296	172,518
Ohio	10,164	12,982	58,965	61,187	68,797	7,699	8,833	45,052	45,761	47,443
Indiana	6,348	7,776	30,690	29,887	33,235	3,215	4,073	20,088	21,711	22,981
Illinois	14,944	16,129	74,202	75,589	76,514	8,631	8,638	45,200	46,408	46,505
Michigan	12,966	10,627	59,330	56,344	57,667	6,959	6,966	36,351	35,269	35,796
Wisconsin	5,680	6,345	27,924	27,895	29,059	3,646	3,860	19,846	19,147	19,793
West North Central	19,382	19,848	103,596	102,424	104,566	13,530	13,712	76,485	75,304	74,901
Minnesota	5,549	5,881	26,300	25,902	26,782	2,966	3,054	15,766	15,809	15,719
Iowa	2,498	2,033	13,349	12,517	14,437	2,205	2,308	14,408	11,050	11,581
Missouri	5,633	5,265	30,437	30,608	31,569	4,192	4,000	24,104	26,174	25,166
North Dakota	643	798	3,368	3,661	3,472	509	509	2,500	2,625	2,520
South Dakota	877	1,178	3,918	4,667	4,297	614	685	2,578	3,002	2,936
Nebraska	1,619	1,856	9,451	9,582	9,315	1,045	1,215	6,410	6,501	6,359
Kansas	2,563	2,837	16,773	15,487	14,694	1,999	1,941	10,719	10,143	10,620
South Atlantic	51,094	55,081	264,040	273,549	267,810	37,021	34,930	196,681	192,739	188,584
Delaware	809	970	4,256	4,110	4,194	556	562	2,777	2,673	2,637
Maryland	5,612	6,298	28,926	30,067	26,066	3,670	3,310	18,076	17,313	16,207
District of Columbia	687	787	3,376	3,745	4,072	484	559	2,600	2,809	2,946
Virginia	7,384	7,834	34,055	40,885	38,319	4,332	4,334	22,502	23,367	24,166
West Virginia	1,076	1,589	7,793	8,932	9,598	1,805	1,707	8,104	8,753	9,076
North Carolina	6,572	9,719	42,593	42,568	40,849	5,594	5,001	29,641	28,221	28,583
South Carolina	4,505	4,783	21,174	20,770	21,296	3,090	2,455	15,300	14,204	13,716
Georgia	9,977	9,615	47,797	48,272	44,592	5,076	5,089	27,148	25,879	25,394
Florida	14,472	13,486	74,070	74,200	78,824	12,414	11,913	70,713	69,520	65,859
East South Central	20,283	19,759	90,786	92,162	94,759	13,816	13,469	69,330	69,872	69,013
Kentucky	4,247	4,359	21,647	20,343	21,267	3,019	3,227	16,754	17,572	16,894
Tennessee	8,136	7,298	28,082	29,917	30,556	5,228	4,812	21,422	22,227	20,595
Alabama	4,460	4,593	24,790	25,318	25,738	3,341	3,252	19,323	18,587	19,575
Mississippi	3,440	3,509	16,267	16,584	17,198	2,228	2,178	11,831	11,486	11,949
West South Central	41,682	37,970	199,305	204,770	195,906	20,562	19,292	109,064	103,861	106,611
Arkansas	2,561	2,654	13,984	13,528	14,029	1,944	2,095	11,027	10,760	12,121
Louisiana	6,017	5,908	27,842	28,625	29,214	2,780	3,248	18,709	17,087	18,558
Oklahoma	4,727	4,595	19,079	19,353	18,786	2,696	2,674	14,700	14,186	14,298
Texas <sup>1</sup>	28,377	24,813	138,400	143,264	133,877	13,142	11,275	64,628	61,828	61,634
Mountain	24,094	20,312	105,010	102,610	99,631	10,962	9,532	52,507	49,266	46,560
Montana	947	987	4,492	4,535	4,467	634	612	3,254	3,261	3,091
Idaho	1,605	1,485	7,852	6,970	7,184	712	710	3,587	3,517	3,596
Wyoming	436	555	2,469	2,689	2,626	287	329	1,434	1,603	1,448
Colorado	4,438	4,642	20,362	21,868	22,617	1,959	2,034	11,045	10,719	10,518
New Mexico	2,086	2,297	10,928	10,962	11,571	1,230	903	5,762	5,325	5,319
Arizona	9,397	5,992	34,678	31,916	26,384	4,102	2,919	16,823	14,791	13,170
Utah	3,350	3,382	16,131	15,884	15,940	986	1,049	4,830	4,627	4,377
Nevada	1,835	972	8,098	7,786	8,842	1,052	976	5,772	5,423	5,041
Pacific	69,257	60,388	296,205	293,880	297,503	29,157	22,111	137,140	131,449	126,694
Washington	7,176	6,440	34,053	30,831	31,517	2,828	2,909	16,935	16,153	15,480
Oregon	3,905	3,800	19,350	18,503	17,654	2,230	2,230	14,915	12,155	11,948
California <sup>1</sup>	55,764	47,755	230,971	232,710	234,182	23,227	16,223	100,952	99,021	95,260
Alaska	847	1,009	4,203	4,518	6,200	209	143	938	857	930
Hawaii	1,565	1,384	7,628	7,318	7,950	663	606	3,400	3,263	3,076
Puerto Rico <sup>2</sup>	4,174	5,163	---	24,794	---	2,610	2,569	---	12,297	---

--- Data not available.

<sup>1</sup>Figures include adjustments for varying lengths of reporting periods; see [Technical notes](#).

<sup>2</sup>Data for Puerto Rico are not included in U.S. total figures.

NOTES: Figures include all revisions received from the States. Cumulative figures for the current year reflect revisions received for previous months, and figures for earlier years may differ from those previously published.

**Table 3. Provisional number of marriages and divorces: Each division and State, May 1995 and 1996, and cumulative figures, 1994–96**

[By State of occurrence. Number of events reported; see [Technical notes](#). Divorces include reported annulments]

Area	Marriages					Divorces				
	May		January–May			May		January–May		
	1996	1995	1996	1995	1994	1996	1995	1996	1995	1994
New England	9,353	6,812	24,929	25,288	31,531	<sup>1</sup> 2,377	3,490	<sup>1</sup> 10,461	16,164	15,312
Maine	411	1,142	1,914	2,594	2,416	225	403	1,636	1,944	1,948
New Hampshire	573	587	2,269	2,166	2,786	456	441	1,964	2,019	1,999
Vermont	325	279	1,373	1,444	1,257	372	326	1,207	1,350	1,053
Massachusetts	5,387	2,389	11,537	11,802	16,633	---	1,069	---	5,383	4,752
Rhode Island	735	704	2,159	1,913	2,025	358	333	1,375	1,473	1,382
Connecticut	1,922	1,711	5,677	5,369	6,414	966	918	4,279	3,995	4,178
Middle Atlantic	26,668	26,103	82,740	84,540	83,977	11,948	9,855	49,535	49,540	48,594
New York <sup>2</sup>	12,665	11,830	46,338	46,265	45,086	6,634	4,240	23,982	23,019	22,955
New Jersey	5,534	5,292	15,685	15,891	16,283	2,459	2,157	10,715	10,219	9,889
Pennsylvania	8,469	8,981	20,717	22,384	22,608	2,855	3,458	14,838	16,302	15,750
East North Central	28,556	32,459	92,281	105,233	101,631	<sup>1</sup> 14,440	<sup>1</sup> 12,372	<sup>1</sup> 57,996	<sup>1</sup> 61,468	<sup>1</sup> 61,281
Ohio	7,354	8,562	24,128	29,440	27,251	5,160	3,509	18,285	19,956	20,420
Indiana	3,240	4,587	10,341	16,265	15,592	---	---	---	---	---
Illinois	8,273	8,905	27,789	28,779	28,536	4,036	3,650	15,776	16,833	16,980
Michigan	6,381	6,743	19,970	20,676	20,240	3,899	3,722	16,972	17,394	16,727
Wisconsin	3,308	3,662	10,053	10,073	10,012	1,345	1,491	6,963	7,285	7,154
West North Central	12,042	13,953	45,669	46,468	44,461	6,518	6,039	32,489	30,911	32,706
Minnesota	2,527	3,339	9,233	9,178	8,777	1,335	1,369	6,150	6,334	6,815
Iowa	1,727	1,999	5,978	6,554	6,264	885	806	5,446	4,619	4,860
Missouri	3,779	4,779	16,088	16,121	14,312	2,212	2,660	10,851	11,784	11,562
North Dakota	403	429	1,335	1,190	1,270	229	205	980	919	914
South Dakota	633	634	1,996	2,202	2,127	233	227	1,113	1,181	1,146
Nebraska	1,388	1,501	4,305	4,282	4,294	489	602	2,523	2,683	2,800
Kansas	1,585	1,272	6,734	6,941	7,417	1,135	170	5,426	3,391	4,609
South Atlantic	<sup>1</sup> 39,054	43,236	<sup>1</sup> 154,282	167,379	165,838	<sup>1</sup> 18,101	21,297	<sup>1</sup> 80,610	92,937	95,770
Delaware	560	570	1,753	1,740	1,661	319	279	1,415	1,601	1,382
Maryland	---	3,819	---	13,237	13,904	---	1,271	---	6,063	6,601
District of Columbia	232	146	650	576	567	121	89	444	536	871
Virginia	6,194	7,547	21,847	24,957	24,971	2,690	2,563	11,164	10,993	11,827
West Virginia	827	1,080	3,281	3,403	3,102	1,089	1,089	2,794	3,821	3,709
North Carolina	5,327	6,633	21,070	23,129	17,401	3,391	3,257	13,885	15,180	14,734
South Carolina	4,635	4,708	17,404	17,180	20,150	1,052	1,007	6,033	5,807	6,318
Georgia	5,743	5,300	23,465	23,247	23,456	3,185	3,486	14,357	14,956	14,946
Florida	15,536	13,433	64,812	59,910	60,626	6,254	8,256	30,518	33,980	35,382
East South Central	15,753	17,083	67,401	71,823	66,891	7,987	8,726	40,283	40,188	40,928
Kentucky	4,370	4,310	14,882	17,189	16,525	1,881	2,024	9,082	9,581	9,640
Tennessee	5,452	7,017	26,810	32,584	27,498	3,030	3,142	14,860	14,168	13,805
Alabama	3,851	3,965	17,641	14,376	14,506	2,031	2,708	10,761	10,818	10,953
Mississippi	2,080	1,791	8,068	7,674	8,362	1,045	852	5,580	5,621	6,530
West South Central	28,702	27,385	115,416	119,494	125,294	<sup>1</sup> 12,238	<sup>1</sup> 12,195	<sup>1</sup> 58,260	<sup>1</sup> 57,211	<sup>1</sup> 60,063
Arkansas	3,523	3,957	12,270	13,230	14,502	1,433	1,282	5,158	5,651	7,759
Louisiana	3,774	2,635	13,956	13,887	16,547	---	---	---	---	---
Oklahoma	3,047	3,037	10,790	10,672	11,155	1,849	1,943	8,577	9,018	8,869
Texas <sup>3</sup>	18,358	17,756	78,400	81,705	83,090	8,956	8,970	44,525	42,542	43,435
Mountain	24,793	24,321	107,905	104,218	102,215	<sup>1</sup> 5,238	<sup>1</sup> 6,188	<sup>1</sup> 25,320	<sup>1</sup> 29,660	<sup>1</sup> 28,725
Montana	533	547	1,862	1,792	1,786	392	355	1,786	1,586	1,736
Idaho	1,064	900	4,820	5,113	5,254	679	497	3,057	2,756	2,952
Wyoming	364	448	1,426	1,485	1,413	325	241	1,372	1,377	1,203
Colorado	1,926	3,095	9,746	11,207	11,370	---	---	---	---	---
New Mexico <sup>4,5</sup>	1,653	1,629	6,604	5,651	4,632	958	1,103	4,864	4,500	4,096
Arizona <sup>2</sup>	4,329	3,838	17,317	16,155	15,026	2,183	2,227	10,622	10,406	9,578
Utah	1,720	1,529	7,679	7,596	7,205	701	659	3,619	3,837	3,868
Nevada	13,204	12,335	58,451	55,219	55,529	---	1,106	---	5,198	5,292
Pacific	27,062	25,269	118,351	94,597	103,495	<sup>1</sup> 4,066	<sup>1</sup> 4,864	<sup>1</sup> 20,773	<sup>1</sup> 21,670	<sup>1</sup> 22,723
Washington	3,784	3,717	14,313	13,804	13,218	2,332	3,015	11,402	12,188	12,538
Oregon	2,096	1,881	7,725	8,517	8,011	1,136	1,316	6,270	6,228	7,094
California	18,883	17,644	86,783	63,243	73,327	---	---	---	---	---
Alaska	396	356	1,682	1,724	1,833	188	254	1,123	1,201	1,351
Hawaii	1,903	1,671	7,848	7,309	7,106	410	279	1,978	2,053	1,740
Puerto Rico <sup>6</sup>	2,324	2,618	---	1,203	---	---	---	---	---	---

--- Data not available.

<sup>1</sup>Excludes figures for State(s) shown below as not available.

<sup>2</sup>Figures for marriages are marriage licenses issued for some counties.

<sup>3</sup>Figures include adjustments for varying lengths of reporting periods; see [Technical notes](#).

<sup>4</sup>Figures for marriages are marriage licenses issued.

<sup>5</sup>Figures for divorces include estimates for some counties.

<sup>6</sup>Data for Puerto Rico are not included in U.S. total figures.

NOTES: Figures include all revisions received from the States. Cumulative figures for the current year reflect revisions received for previous months, and figures for earlier years may differ from those previously published.



**Table 4. Provisional number of deaths under 1 year and infant mortality rates: Each division and State, 12 months ending with May 1995 and 1996**

[Data are estimates by State of residence. Figures should be interpreted with caution because of conversion to place of residence; see [Technical notes](#). Infant mortality rates are deaths under 1 year per 1,000 live births in specified area]

Area	12 months ending with May			
	1996		1995	
	Number	Rate	Number	Rate
New England . . . . .	885	5.1	978	5.5
Maine . . . . .	83	5.9	81	5.8
New Hampshire . . . . .	61	4.1	91	6.4
Vermont . . . . .	51	7.4	47	6.4
Massachusetts . . . . .	372	4.3	449	5.4
Rhode Island . . . . .	82	6.4	80	6.1
Connecticut . . . . .	236	6.1	230	5.0
Middle Atlantic . . . . .	3,957	7.4	4,158	7.7
New York . . . . .	2,017	7.5	2,135	7.9
New Jersey . . . . .	791	6.8	833	7.3
Pennsylvania . . . . .	1,149	7.6	1,190	7.7
East North Central . . . . .	5,187	8.3	5,473	8.7
Ohio . . . . .	1,255	8.2	1,336	8.7
Indiana . . . . .	676	8.0	819	10.2
Illinois . . . . .	1,647	8.9	1,647	8.7
Michigan . . . . .	1,101	8.1	1,164	8.4
Wisconsin . . . . .	508	7.6	507	7.5
West North Central . . . . .	1,758	6.9	1,952	7.8
Minnesota . . . . .	383	6.1	416	6.5
Iowa . . . . .	214	5.7	279	8.2
Missouri . . . . .	565	7.6	604	8.1
North Dakota . . . . .	41	4.9	56	6.3
South Dakota . . . . .	68	6.9	131	11.9
Nebraska . . . . .	175	7.6	198	8.5
Kansas . . . . .	312	8.1	268	7.9
South Atlantic . . . . .	5,602	8.7	5,770	8.6
Delaware . . . . .	67	6.6	68	6.6
Maryland . . . . .	595	8.4	640	8.5
District of Columbia . . . . .	147	17.1	172	18.4
Virginia . . . . .	686	8.3	727	7.4
West Virginia . . . . .	159	8.0	149	7.1
North Carolina . . . . .	956	9.4	1,001	9.7
South Carolina . . . . .	445	8.9	443	8.8
Georgia . . . . .	1,096	9.7	1,065	9.5
Florida . . . . .	1,451	7.7	1,505	8.1
East South Central . . . . .	2,054	9.3	2,194	9.6
Kentucky . . . . .	394	7.5	410	8.0
Tennessee . . . . .	643	8.9	729	9.7
Alabama . . . . .	620	10.2	622	10.3
Mississippi . . . . .	397	10.8	433	10.1
West South Central . . . . .	3,486	7.3	3,633	7.6
Arkansas . . . . .	284	8.2	290	8.5
Louisiana . . . . .	592	8.9	647	9.5
Oklahoma . . . . .	419	9.2	386	8.3
Texas <sup>1</sup> . . . . .	2,191	6.7	2,310	7.0
Mountain . . . . .	1,697	7.0	1,734	7.0
Montana . . . . .	81	7.2	101	9.1
Idaho . . . . .	120	6.4	119	6.9
Wyoming . . . . .	51	8.4	58	9.0
Colorado . . . . .	348	7.2	354	6.6
New Mexico . . . . .	177	6.5	217	7.9
Arizona . . . . .	563	7.9	534	7.5
Utah . . . . .	218	5.6	229	5.9
Nevada . . . . .	139	6.4	122	6.0
Pacific . . . . .	4,072	5.7	4,645	6.4
Washington . . . . .	241	3.0	436	5.5
Oregon . . . . .	242	5.5	276	6.4
California <sup>1</sup> . . . . .	3,406	6.1	3,734	6.4
Alaska . . . . .	71	7.3	77	7.4
Hawaii . . . . .	112	6.0	122	6.6
Puerto Rico <sup>2</sup> . . . . .	---	---	---	---

--- Data not available.

<sup>1</sup>Figures include adjustments for varying lengths of reporting periods; see [Technical notes](#).

<sup>2</sup>Data for Puerto Rico are not included in U.S. total figures.

NOTES: Figures include all revisions received from the States. Figures for the current year reflect revisions received for previous months, and figures for earlier years may differ from those previously published.

**Table 5. Provisional number of deaths and death rates, by age, race, and sex, and age-adjusted death rates by race and sex: United States, April 1995 and 1996, cumulative figures 1995 and 1996, and 12 months ending with April 1995 and 1996**

[Data are provisional, estimated from a 10-percent sample of deaths. Age-specific rates on an annual basis per 100,000 population in specified group; age-adjusted rates per 100,000 U.S. standard million population; see [Technical notes](#). Because of rounding of estimates, figures may not add to totals. For method of computation and information on standard errors of the estimates, see [Technical notes](#)]

Age, race, and sex	April				January–April				12 months ending with April			
	1996		1995		1996		1995		1996		1995	
	Number	Rate	Number	Rate	Number	Rate	Number	Rate	Number	Rate	Number	Rate
<b>All races, both sexes<sup>1</sup></b>												
All ages . . . . .	194,000	892.4	200,000	926.1	819,000	937.1	821,000	954.1	2,306,000	874.7	2,297,000	878.1
Under 1 year. . . . .	} 3,730	78.5	3,700	78.1	9,500	<sup>2</sup> 748.7	10,100	<sup>2</sup> 800.4	28,700	<sup>2</sup> 746.2	30,900	<sup>2</sup> 802.9
1–4 years . . . . .					2,200	42.8	2,560	49.0	6,390	40.8	7,280	45.9
5–14 years . . . . .					2,860	22.6	2,680	21.5	8,400	21.9	8,870	23.5
15–24 years . . . . .					2,680	91.1	2,790	94.5	10,770	90.7	10,870	92.1
25–34 years . . . . .	4,000	120.4	4,830	143.5	18,270	136.3	19,780	146.6	56,760	139.6	59,480	144.5
35–44 years . . . . .	7,600	215.1	9,080	261.1	33,530	235.8	34,790	250.6	101,390	237.0	103,090	245.7
45–54 years . . . . .	11,800	449.3	12,320	486.3	48,560	460.0	49,010	486.2	142,710	451.6	139,530	460.0
55–64 years . . . . .	19,850	1,138.7	20,380	1,175.4	81,780	1,164.4	81,710	1,179.1	234,510	1,106.4	239,810	1,139.3
65–74 years . . . . .	39,600	2,582.6	41,140	2,669.5	167,980	2,713.2	172,040	2,791.3	474,890	2,531.5	485,610	2,591.7
75–84 years . . . . .	55,300	5,946.2	56,290	6,183.3	235,950	6,307.6	233,690	6,430.3	653,840	5,814.5	648,670	5,896.5
85 years and over. . . . .	48,880	16,108.5	48,930	16,545.7	206,900	16,944.7	203,760	17,268.1	561,400	15,297.0	544,300	15,276.5
Not stated . . . . .	70	...	100	...	340	...	390	...	970	...	850	...
Age-adjusted rate <sup>3</sup> . . . . .	...	501.6	...	529.1	...	524.7	...	540.7	...	498.5	...	510.4
<b>All races, male<sup>1</sup></b>												
All ages. . . . .	97,520	920.7	100,000	950.5	412,570	966.8	413,050	982.6	1,171,290	909.6	1,172,340	919.1
Under 1 year. . . . .	} 1,920	78.9	2,260	93.2	5,150	<sup>2</sup> 789.4	5,630	<sup>2</sup> 871.7	15,840	<sup>2</sup> 803.7	17,110	<sup>2</sup> 868.5
1–4 years . . . . .					1,160	44.3	1,500	56.7	3,510	43.8	4,230	52.1
5–14 years . . . . .					1,670	25.7	1,680	26.3	5,010	25.6	5,430	28.1
15–24 years . . . . .					2,050	136.5	2,070	137.3	8,200	135.3	8,300	137.8
25–34 years . . . . .	2,880	173.5	3,600	213.9	13,080	195.2	14,540	215.6	40,920	201.4	43,810	212.8
35–44 years . . . . .	5,510	314.3	6,370	369.4	23,060	327.0	24,230	352.0	69,730	328.6	71,860	345.4
45–54 years . . . . .	7,550	588.5	7,540	609.3	31,090	603.1	30,800	625.5	91,090	590.0	87,860	593.0
55–64 years . . . . .	11,940	1,439.7	11,960	1,452.1	49,010	1,466.8	48,610	1,476.2	140,880	1,397.8	144,890	1,449.0
65–74 years . . . . .	22,170	3,246.2	23,010	3,361.2	95,190	3,453.1	97,800	3,574.2	271,380	3,250.4	276,220	3,323.9
75–84 years . . . . .	27,260	7,490.3	27,210	7,722.3	116,560	7,970.4	113,820	8,097.7	321,890	7,340.7	315,830	7,436.5
85 years and over. . . . .	16,180	18,944.0	15,920	19,273.0	68,110	19,840.0	65,920	20,009.1	183,990	17,863.1	177,390	17,864.0
Not stated . . . . .	60	...	50	...	260	...	210	...	700	...	540	...
Age-adjusted rate <sup>3</sup> . . . . .	...	639.6	...	671.3	...	670.0	...	691.4	...	639.6	...	656.3
<b>All races, female<sup>1</sup></b>												
All ages. . . . .	95,990	865.3	99,560	902.8	406,130	908.7	408,340	926.7	1,133,100	840.1	1,131,690	846.3
Under 1 year. . . . .	} 1,810	78.0	1,440	62.3	4,380	<sup>2</sup> 702.6	4,460	<sup>2</sup> 724.0	12,850	<sup>2</sup> 683.9	13,850	<sup>2</sup> 737.1
1–4 years . . . . .					1,040	41.6	1,050	41.7	2,880	37.7	3,060	39.5
5–14 years . . . . .					1,190	19.4	1,010	16.6	3,390	18.2	3,440	18.7
15–24 years . . . . .					640	44.4	720	49.8	2,570	44.4	2,570	44.4
25–34 years . . . . .	1,120	67.4	1,230	73.0	5,190	77.4	5,240	77.7	15,830	77.8	15,670	76.1
35–44 years . . . . .	2,090	117.4	2,710	154.6	10,470	146.1	10,560	151.0	31,660	146.8	31,230	147.6
45–54 years . . . . .	4,250	316.4	4,780	368.8	17,470	323.6	18,210	352.9	51,620	319.4	51,670	333.0
55–64 years . . . . .	7,910	865.5	8,410	924.1	32,770	889.5	33,110	910.2	93,630	842.4	94,920	859.0
65–74 years . . . . .	17,430	2,049.8	18,130	2,116.7	72,780	2,119.8	74,240	2,166.4	203,510	1,955.1	209,390	2,008.3
75–84 years . . . . .	28,030	4,952.4	29,070	5,210.4	119,390	5,239.9	119,870	5,378.6	331,950	4,838.2	332,840	4,928.0
85 years and over. . . . .	32,700	14,992.1	33,010	15,482.7	138,790	15,813.4	137,840	16,201.3	377,410	14,295.8	366,910	14,282.2
Not stated . . . . .	10	...	50	...	80	...	180	...	270	...	310	...
Age-adjusted rate <sup>3</sup> . . . . .	...	387.1	...	410.4	...	404.4	...	415.8	...	380.7	...	388.9
<b>White</b>												
All ages . . . . .	166,780	928.0	172,190	962.4	706,120	975.0	706,940	988.6	1,981,230	906.0	1,979,620	911.8
Under 1 year. . . . .	} 2,530	67.3	2,620	69.8	6,210	<sup>2</sup> 623.3	6,560	<sup>2</sup> 664.6	19,080	<sup>2</sup> 633.9	20,060	<sup>2</sup> 664.5
1–4 years . . . . .					1,520	37.3	1,720	41.8	4,440	35.9	4,810	38.4
5–14 years . . . . .					2,060	20.5	1,950	19.7	6,200	20.4	6,320	21.0
15–24 years . . . . .					1,800	76.8	1,940	82.3	7,480	79.1	7,530	79.8
25–34 years . . . . .	2,610	96.5	3,260	118.4	12,690	116.1	14,140	128.2	39,380	118.7	42,600	126.4
35–44 years . . . . .	5,560	189.0	6,510	224.8	24,100	203.6	24,450	211.5	72,620	203.8	73,460	210.0
45–54 years . . . . .	9,000	401.5	9,370	432.2	36,910	409.5	37,510	434.7	109,370	405.0	106,900	411.5
55–64 years . . . . .	16,130	1,072.0	16,840	1,123.3	66,490	1,096.7	66,170	1,103.9	190,460	1,040.4	195,230	1,071.6
65–74 years . . . . .	34,680	2,553.8	35,600	2,602.6	146,240	2,666.3	148,030	2,705.3	411,650	2,475.3	418,960	2,517.3
75–84 years . . . . .	49,430	5,862.2	50,530	6,120.3	211,730	6,242.0	210,380	6,383.8	587,020	5,756.8	584,410	5,857.6
85 years and over. . . . .	44,990	16,292.0	45,440	16,875.9	190,480	17,143.9	188,190	17,519.1	515,800	15,438.5	501,290	15,438.6
Not stated . . . . .	50	...	80	...	220	...	300	...	720	...	620	...
Age-adjusted rate <sup>3</sup> . . . . .	...	475.6	...	501.8	...	497.9	...	510.8	...	472.2	...	482.3

See footnotes at end of table.

**Table 5. Provisional number of deaths and death rates, by age, race, and sex, and age-adjusted death rates by race and sex: United States, April 1995 and 1996, cumulative figures 1995 and 1996, and 12 months ending with April 1995 and 1996—Con.**

[Data are provisional, estimated from a 10-percent sample of deaths. Age-specific rates on an annual basis per 100,000 population in specified group; age-adjusted rates per 100,000 U.S. standard million population; see [Technical notes](#). Because of rounding of estimates, figures may not add to totals. For method of computation and information on standard errors of the estimates, see [Technical notes](#)]

Age, race, and sex	April				January–April				12 months ending with April			
	1996		1995		1996		1995		1996		1995	
	Number	Rate	Number	Rate	Number	Rate	Number	Rate	Number	Rate	Number	Rate
<b>White male</b>												
All ages. . . . .	83,170	943.0	85,370	972.8	351,400	988.7	351,410	1,002.0	996,040	928.3	995,800	935.3
Under 1 year. . . . .	} 1,240	64.3	1,600	83.0	3,260	<sup>2</sup> 638.5	3,690	<sup>2</sup> 729.7	10,570	<sup>2</sup> 684.1	11,050	<sup>2</sup> 713.8
1–4 years . . . . .					820	39.7	1,080	51.7	2,550	40.2	2,870	44.6
5–14 years . . . . .					1,180	22.8	1,220	24.2	3,650	23.4	3,820	24.8
15–24 years . . . . .	1,350	112.3	1,460	120.7	5,560	114.4	5,720	118.0	18,330	124.7	18,800	127.6
25–34 years . . . . .	1,990	145.7	2,490	179.2	9,340	169.5	10,590	190.1	29,050	173.5	31,870	187.2
35–44 years . . . . .	4,110	278.6	4,590	316.1	16,730	281.7	17,270	297.8	50,650	283.5	52,070	297.0
45–54 years . . . . .	5,810	524.8	5,690	531.7	23,770	534.2	23,730	557.1	70,420	528.0	67,860	529.2
55–64 years . . . . .	9,670	1,335.9	10,180	1,413.4	39,890	1,367.7	40,070	1,391.1	115,320	1,310.0	119,460	1,364.9
65–74 years . . . . .	19,580	3,213.3	20,250	3,308.8	83,230	3,382.7	85,050	3,476.3	236,340	3,169.8	240,570	3,236.1
75–84 years . . . . .	24,510	7,399.7	24,530	7,650.6	104,840	7,877.8	102,730	8,033.3	290,690	7,285.5	285,340	7,386.5
85 years and over. . . . .	14,860	19,245.4	14,530	19,490.8	62,580	20,160.5	60,090	20,214.5	167,910	18,035.4	161,680	18,004.5
Not stated . . . . .	50	...	40	...	190	...	170	...	560	...	400	...
Age-adjusted rate <sup>3</sup> . . . . .	...	604.3	...	637.7	...	632.4	...	653.0	...	604.2	...	619.3
<b>White female</b>												
All ages. . . . .	83,620	913.7	86,820	952.4	354,720	961.8	355,530	975.8	985,190	884.6	983,810	889.2
Under 1 year. . . . .	} 1,290	70.5	1,020	55.8	2,940	<sup>2</sup> 607.3	2,870	<sup>2</sup> 596.0	8,500	<sup>2</sup> 580.2	9,010	<sup>2</sup> 612.5
1–4 years . . . . .					700	35.3	640	31.9	1,900	31.5	1,930	31.6
5–14 years . . . . .					880	18.2	730	15.1	2,550	17.3	2,490	17.0
15–24 years . . . . .	450	39.4	470	40.9	1,920	41.7	1,800	39.2	6,140	44.0	6,160	44.0
25–34 years . . . . .	620	46.3	760	55.8	3,350	61.7	3,550	65.0	10,330	62.9	10,740	64.4
35–44 years . . . . .	1,450	98.9	1,920	132.9	7,370	124.7	7,180	124.5	21,970	123.7	21,390	122.6
45–54 years . . . . .	3,190	281.1	3,680	335.3	13,140	288.0	13,780	315.6	38,950	285.0	39,040	296.7
55–64 years . . . . .	6,450	826.0	6,660	855.0	26,600	845.3	26,110	838.3	75,140	790.7	75,770	800.4
65–74 years . . . . .	15,100	2,017.1	15,360	2,032.2	63,010	2,083.7	62,980	2,082.3	175,320	1,911.1	178,380	1,937.0
75–84 years . . . . .	24,920	4,867.5	26,000	5,148.7	106,880	5,185.9	107,660	5,337.6	296,330	4,774.1	299,070	4,891.6
85 years and over. . . . .	30,130	15,145.7	30,910	15,874.7	127,900	15,973.1	128,100	16,487.8	347,900	14,435.7	339,610	14,457.6
Not stated . . . . .	—	...	40	...	30	...	130	...	160	...	220	...
Age-adjusted rate <sup>3</sup> . . . . .	...	368.6	...	387.8	...	386.3	...	392.1	...	361.5	...	367.5
<b>Black</b>												
All ages. . . . .	23,570	858.4	24,110	887.9	99,630	901.2	101,130	932.8	285,540	857.1	286,130	871.0
Under 1 year. . . . .	} 1,060	142.6	1,010	136.8	3,000	<sup>2</sup> 1,446.4	3,210	<sup>2</sup> 1,569.3	8,740	<sup>2</sup> 1,400.6	9,770	<sup>2</sup> 1,575.8
1–4 years . . . . .					580	71.3	800	96.5	1,640	66.4	2,220	88.8
5–14 years . . . . .					690	35.0	640	33.2	1,810	30.5	2,080	35.6
15–24 years . . . . .	740	165.1	780	174.5	2,860	158.7	2,900	162.4	8,560	156.4	9,190	169.6
25–34 years . . . . .	1,280	288.3	1,400	313.7	5,040	281.7	5,160	288.6	15,740	291.1	15,120	277.6
35–44 years . . . . .	1,860	429.8	2,350	554.8	8,700	499.2	9,490	561.8	26,340	503.6	27,090	531.7
45–54 years . . . . .	2,520	911.5	2,630	998.7	10,390	936.4	10,100	966.1	29,830	902.0	28,760	917.4
55–64 years . . . . .	3,270	1,858.1	3,220	1,848.8	13,580	1,914.8	13,740	1,977.3	38,810	1,815.2	39,170	1,860.8
65–74 years . . . . .	4,360	3,267.3	4,920	3,715.7	19,110	3,554.0	21,170	4,004.1	55,610	3,426.4	58,900	3,669.8
75–84 years . . . . .	5,180	7,532.3	4,820	7,116.9	21,100	7,618.4	20,290	7,500.5	58,230	6,982.0	56,180	6,842.9
85 years and over. . . . .	3,270	14,298.9	2,980	13,329.7	14,450	15,636.0	13,540	15,141.2	39,990	14,333.3	37,420	13,859.3
Not stated . . . . .	20	...	20	...	120	...	90	...	230	...	210	...
Age-adjusted rate <sup>3</sup> . . . . .	...	754.1	...	797.5	...	788.1	...	828.7	...	755.2	...	777.8
<b>Black male</b>												
All ages. . . . .	12,570	964.8	12,750	990.1	53,990	1,029.1	54,050	1,051.2	154,090	974.9	154,490	991.7
Under 1 year. . . . .	} 600	159.2	610	162.8	1,690	<sup>2</sup> 1,609.0	1,710	<sup>2</sup> 1,642.8	4,740	<sup>2</sup> 1,500.0	5,410	<sup>2</sup> 1,717.5
1–4 years . . . . .					290	70.3	390	94.0	830	66.3	1,160	91.6
5–14 years . . . . .					400	40.0	410	42.9	1,120	37.2	1,340	45.3
15–24 years . . . . .	600	267.5	550	246.3	2,380	263.0	2,280	256.7	6,940	253.5	7,310	270.0
25–34 years . . . . .	850	404.4	940	445.3	3,400	401.4	3,600	425.8	10,820	422.7	10,650	413.4
35–44 years . . . . .	1,260	623.3	1,620	819.9	5,780	711.3	6,370	807.0	17,430	714.1	18,060	760.1
45–54 years . . . . .	1,560	1,245.5	1,660	1,391.0	6,600	1,312.6	6,280	1,323.4	18,680	1,246.2	17,810	1,254.2
55–64 years . . . . .	1,980	2,589.1	1,580	2,087.2	8,100	2,627.5	7,550	2,497.3	22,550	2,424.7	22,350	2,442.6
65–74 years . . . . .	2,260	4,054.7	2,460	4,467.2	10,460	4,663.6	11,150	5,070.0	30,470	4,500.7	31,270	4,688.2
75–84 years . . . . .	2,420	9,585.7	2,200	8,952.1	10,130	9,991.5	9,510	9,682.5	26,950	8,836.1	26,110	8,791.2
85 years and over. . . . .	1,020	15,555.0	1,110	17,094.9	4,680	17,537.3	4,750	18,288.5	13,420	16,567.9	12,890	16,525.6
Not stated . . . . .	10	...	10	...	70	...	40	...	130	...	130	...
Age-adjusted rate <sup>3</sup> . . . . .	...	997.4	...	1,018.9	...	1,060.8	...	1,086.7	...	1,005.9	...	1,030.7

See footnotes at end of table.

**Table 5. Provisional number of deaths and death rates, by age, race, and sex, and age-adjusted death rates by race and sex: United States, April 1995 and 1996, cumulative figures 1995 and 1996, and 12 months ending with April 1995 and 1996—Con.**

[Data are provisional, estimated from a 10-percent sample of deaths. Age-specific rates on an annual basis per 100,000 population in specified group; age-adjusted rates per 100,000 U.S. standard million population; see [Technical notes](#). Because of rounding of estimates, figures may not add to totals. For method of computation and information on standard errors of the estimates, see [Technical notes](#)]

Age, race, and sex	April				January–April				12 months ending with April							
	1996		1995		1996		1995		1996		1995					
	Number	Rate	Number	Rate	Number	Rate	Number	Rate	Number	Rate	Number	Rate				
Black female																
All ages. . . . .	11,000	762.4	11,360	795.8	45,640	785.7	47,080	825.9	131,450	750.8	131,640	762.1				
Under 1 year. . . . .	} 460	125.6	400	109.9	1,320	<sup>2</sup> 1,289.4	1,500	<sup>2</sup> 1,493.7	4,000	<sup>2</sup> 1,298.7	4,360	<sup>2</sup> 1,429.5				
1–4 years . . . . .					290	72.3	410	101.6	810	66.5	1,050	85.2				
5–14 years . . . . .					290	29.9	230	24.2	690	23.6	740	25.7				
15–24 years . . . . .					130	58.0	230	102.9	480	53.1	620	69.4	1,620	59.2	1,880	69.3
25–34 years . . . . .					430	183.9	460	195.5	1,640	174.1	1,560	165.5	4,920	172.8	4,480	156.0
35–44 years . . . . .	600	260.1	720	318.7	2,920	314.6	3,120	346.3	8,910	319.5	9,030	332.1				
45–54 years . . . . .	960	634.8	970	673.6	3,780	623.0	3,820	668.3	11,150	616.7	10,950	638.5				
55–64 years . . . . .	1,290	1,296.4	1,630	1,655.4	5,480	1,366.8	6,190	1,575.2	16,260	1,346.0	16,830	1,414.3				
65–74 years . . . . .	2,100	2,702.5	2,450	3,167.7	8,650	2,760.0	10,020	3,242.4	25,150	2,658.6	27,630	2,945.6				
75–84 years . . . . .	2,770	6,364.2	2,620	6,071.7	10,970	6,251.7	10,780	6,251.7	31,280	5,913.0	30,070	5,738.5				
85 years and over. . . . .	2,240	13,732.7	1,870	11,788.4	9,770	14,850.4	8,790	13,853.0	26,560	13,414.1	24,540	12,781.3				
Not stated . . . . .	10	...	10	...	50	...	50	...	100	...	80	...				
Age-adjusted rate <sup>3</sup> . . . . .	...	563.5	...	623.4	...	577.3	...	630.0	...	560.4	...	582.1				

... Category not applicable.

– Quantity zero.

<sup>1</sup>Includes races other than white and black.

<sup>2</sup>Death rates for “Under 1 year” (based on population estimates) differ from infant mortality rates (based on live births); see [table 9](#) for infant mortality rates.

<sup>3</sup>For method of computation, see [Technical notes](#).

NOTES: Figures include all revisions received from the States. Cumulative and 12-month figures for the current year reflect revisions received for previous months, and figures for earlier years may differ from those previously published. Data include adjustments for New York State, which is not included in the sample for April 1996.

**Table 6. Provisional number of deaths and death rates for 72 selected causes, Human immunodeficiency virus infection, and Alzheimer's disease: United States, April 1995 and 1996, cumulative figures 1995 and 1996, and 12 months ending with April 1995 and 1996**

[Data are provisional, estimated from a 10-percent sample of deaths. Rates on an annual basis per 100,000 estimated population. Because of rounding of estimates, figures may not add to totals. For method of computation and information on standard errors of the estimates, see [Technical notes](#). For explanation of asterisks preceding cause-of-death categories, see [Technical notes](#)]

Cause of death (Based on the Ninth Revision, International Classification of Diseases, 1975)	April		January–April				12 months ending with April					
	1996		1995		1996		1995		1996		1995	
	Number	Rate	Number	Rate	Number	Rate	Number	Rate	Number	Rate	Number	Rate
All causes . . . . .	194,000	892.4	200,000	926.1	819,000	937.1	821,000	954.1	2,306,000	874.7	2,297,000	878.1
Shigellosis and amebiasis . . . . .	—	*	—	*	—	*	—	*	—	*	—	*
Certain other intestinal infections . . . . .	40	*	50	*	340	0.4	210	0.2	770	0.3	650	0.2
Tuberculosis . . . . .	70	*	120	0.5	390	0.4	610	0.7	1,150	0.4	1,580	0.6
Tuberculosis of respiratory system . . . . .	30	*	90	*	300	0.3	470	0.5	900	0.3	1,150	0.4
Other tuberculosis . . . . .	40	*	30	*	90	*	140	0.2	250	0.1	420	0.2
Whooping cough . . . . .	—	*	—	*	10	*	—	*	20	*	—	*
Streptococcal sore throat, scarlatina, and erysipelas . . . . .	—	*	—	*	—	*	10	*	—	*	10	*
Meningococcal infection . . . . .	10	*	50	*	110	0.1	140	0.2	270	0.1	330	0.1
Septicemia . . . . .	2,110	9.7	1,930	9.0	7,830	9.0	7,950	9.2	21,080	8.0	20,280	7.8
Acute poliomyelitis . . . . .	—	*	—	*	—	*	—	*	—	*	—	*
Measles . . . . .	—	*	—	*	—	*	—	*	—	*	10	*
Viral hepatitis . . . . .	310	1.4	270	1.2	1,200	1.4	1,150	1.3	3,570	1.4	3,060	1.2
Syphilis . . . . .	—	*	10	*	—	*	80	*	50	*	120	0.0
All other infectious and parasitic diseases <sup>1</sup> . . . . .	3,470	16.0	4,240	19.7	14,730	16.9	17,030	19.8	46,720	17.7	48,730	18.7
Malignant neoplasms, including neoplasms of lymphatic and hematopoietic tissues . . . . .	43,260	199.5	44,500	206.5	182,930	209.4	180,830	210.0	538,540	204.3	542,520	207.6
Malignant neoplasms of lip, oral cavity, and pharynx . . . . .	660	3.0	590	2.7	2,660	3.0	2,850	3.3	7,790	3.0	8,100	3.1
Malignant neoplasms of digestive organs and peritoneum . . . . .	9,960	45.9	10,300	47.8	42,420	48.5	41,790	48.5	125,880	47.7	127,370	48.8
Malignant neoplasms of respiratory and intrathoracic organs . . . . .	12,670	58.4	12,810	59.4	53,890	61.7	52,330	60.8	156,500	59.4	156,030	59.7
Malignant neoplasm of breast . . . . .	3,530	16.3	3,640	16.9	14,760	16.9	15,080	17.5	43,690	16.6	44,740	17.1
Malignant neoplasms of genital organs . . . . .	4,850	22.4	5,150	23.9	19,970	22.9	20,720	24.1	60,050	22.8	62,540	23.9
Malignant neoplasms of urinary organs . . . . .	2,010	9.3	1,880	8.7	7,960	9.1	7,900	9.2	23,150	8.8	22,240	8.5
Malignant neoplasms of all other and unspecified sites . . . . .	5,230	24.1	5,440	25.2	22,360	25.6	21,680	25.2	66,270	25.1	67,100	25.7
Leukemia . . . . .	1,700	7.8	1,740	8.1	7,180	8.2	6,540	7.6	20,270	7.7	19,550	7.5
Other malignant neoplasms of lymphatic and hematopoietic tissues . . . . .	2,650	12.2	2,940	13.6	11,720	13.4	11,940	13.9	34,930	13.2	34,840	13.3
Benign neoplasms, carcinoma in situ, and neoplasms of uncertain behavior and of unspecified nature . . . . .	700	3.2	660	3.1	2,730	3.1	3,180	3.7	7,950	3.0	8,280	3.2
Diabetes mellitus . . . . .	5,300	24.4	5,180	24.0	21,530	24.6	20,980	24.4	58,880	22.3	56,950	21.8
Nutritional deficiencies . . . . .	350	1.6	380	1.8	1,500	1.7	1,340	1.6	3,990	1.5	3,420	1.3
Anemias . . . . .	380	1.7	330	1.5	1,350	1.5	1,550	1.8	4,090	1.6	4,290	1.6
Meningitis . . . . .	60	*	80	*	250	0.3	360	0.4	680	0.3	930	0.4
Major cardiovascular diseases . . . . .	79,240	365.4	82,030	380.7	337,230	386.0	341,240	396.3	938,510	356.0	942,950	360.9
Diseases of heart . . . . .	61,950	285.7	64,040	297.2	262,250	300.2	264,630	307.4	728,490	276.3	733,010	280.6
Rheumatic fever and rheumatic heart disease . . . . .	460	2.1	430	2.0	1,920	2.2	1,970	2.3	4,980	1.9	5,520	2.1
Hypertensive heart disease . . . . .	2,140	9.9	2,000	9.3	9,110	10.4	8,450	9.8	25,150	9.5	23,810	9.1
Hypertensive heart and renal disease . . . . .	240	1.1	160	0.7	840	1.0	930	1.1	2,260	0.9	2,440	0.9
Ischemic heart disease . . . . .	39,070	180.2	42,310	196.3	168,890	193.3	173,590	201.6	472,710	179.3	482,660	184.7
Acute myocardial infarction . . . . .	18,040	83.2	18,810	87.3	76,820	87.9	79,270	92.0	214,750	81.5	223,160	85.4
Other acute and subacute forms of ischemic heart disease . . . . .	220	1.0	220	1.0	880	1.0	970	1.1	2,510	1.0	2,670	1.0
Angina pectoris . . . . .	20	*	50	*	230	0.3	270	0.3	690	0.3	810	0.3
Old myocardial infarction and other forms of chronic ischemic heart disease . . . . .	20,790	95.9	23,230	107.8	90,950	104.1	93,090	108.1	254,760	96.6	256,010	98.0
Other diseases of endocardium . . . . .	1,400	6.5	1,310	6.1	5,980	6.8	5,680	6.6	15,820	6.0	15,150	5.8
All other forms of heart disease . . . . .	18,640	85.9	17,840	82.8	75,520	86.4	74,010	85.9	207,570	78.7	203,430	77.9
Hypertension with or without renal disease . . . . .	1,120	5.2	1,120	5.2	4,460	5.1	4,470	5.2	12,470	4.7	11,110	4.3
Cerebrovascular diseases . . . . .	12,710	58.6	13,220	61.3	55,940	64.0	56,680	65.8	156,020	59.2	155,830	59.6
Intracerebral and other intracranial hemorrhage . . . . .	1,910	8.8	1,720	8.0	8,090	9.3	7,780	9.0	22,010	8.3	21,500	8.2
Cerebral thrombosis and unspecified occlusion of cerebral arteries . . . . .	890	4.1	1,140	5.3	4,290	4.9	5,020	5.8	12,680	4.8	14,660	5.6
Cerebral embolism . . . . .	70	*	50	*	210	0.2	180	0.2	680	0.3	760	0.3
All other and late effects of cerebrovascular diseases . . . . .	9,850	45.4	10,310	47.8	43,340	49.6	43,700	50.8	120,650	45.8	118,910	45.5

See footnotes at end of table.

**Table 6. Provisional number of deaths and death rates for 72 selected causes, Human immunodeficiency virus infection, and Alzheimer's disease: United States, April 1995 and 1996, cumulative figures 1995 and 1996, and 12 months ending with April 1995 and 1996—Con.**

[Data are provisional, estimated from a 10-percent sample of deaths. Rates on an annual basis per 100,000 estimated population. Because of rounding of estimates, figures may not add to totals. For method of computation and information on standard errors of the estimates, see [Technical notes](#). For explanation of asterisks preceding cause-of-death categories, see [Technical notes](#)]

Cause of death (Based on the Ninth Revision, International Classification of Diseases, 1975)	April		1995		1996		1995		12 months ending with April		1995		
	1996		1995		1996		1995		1996		1995		
	Number	Rate	Number	Rate	Number	Rate	Number	Rate	Number	Rate	Number	Rate	
Cerebrovascular diseases—Con.													
Atherosclerosis . . . . .	440	1,470	6.8	1,460	6.8	5,640	6.4	6,150	7.1	15,890	6.0	16,870	6.5
Other diseases of arteries, arterioles, and capillaries . . . . .	.441–448	1,990	9.2	2,190	10.2	8,940	10.2	9,300	10.8	25,650	9.7	26,130	10.0
Acute bronchitis and bronchiolitis . . . . .	.466	30	*	80	*	200	0.2	290	0.3	450	0.2	490	0.2
Pneumonia and influenza . . . . .	.480–487	7,150	33.0	7,610	35.3	32,960	37.7	33,840	39.3	79,290	30.1	79,830	30.6
Pneumonia . . . . .	.480–486	7,120	32.8	7,550	35.0	32,510	37.2	33,440	38.8	78,760	29.9	79,370	30.4
Influenza . . . . .	.487	30	*	60	*	450	0.5	400	0.5	530	0.2	460	0.2
Chronic obstructive pulmonary diseases and allied conditions . . . . .	.490–496	9,650	44.5	9,130	42.4	40,530	46.4	40,670	47.2	103,410	39.2	102,230	39.1
Bronchitis, chronic and unspecified . . . . .	.490–491	310	1.4	320	1.5	1,460	1.7	1,280	1.5	3,150	1.2	3,440	1.3
Emphysema . . . . .	.492	1,510	7.0	1,520	7.0	6,590	7.5	7,240	8.4	16,770	6.4	18,060	6.9
Asthma . . . . .	.493	430	2.0	390	1.8	1,710	2.0	2,070	2.4	5,150	2.0	5,230	2.0
Other chronic obstructive pulmonary diseases and allied conditions . . . . .	.494–496	7,410	34.2	6,910	32.1	30,770	35.2	30,080	34.9	78,340	29.7	75,510	28.9
Ulcer of stomach and duodenum . . . . .	.531–533	460	2.1	610	2.8	1,900	2.2	2,090	2.4	5,700	2.2	5,920	2.3
Appendicitis . . . . .	.540–543	10	*	50	*	150	0.2	140	0.2	410	0.2	380	0.1
Hernia of abdominal cavity and intestinal obstruction without mention of hernia . . . . .	.550–553,560	590	2.7	570	2.6	2,310	2.6	2,220	2.6	6,050	2.3	6,120	2.3
Chronic liver disease and cirrhosis . . . . .	.571	1,760	8.1	2,230	10.3	8,460	9.7	9,030	10.5	24,520	9.3	26,180	10.0
Cholelithiasis and other disorders of gallbladder . . . . .	.574–575	130	0.6	280	1.3	830	0.9	1,000	1.2	2,530	1.0	2,670	1.0
Nephritis and nephrotic syndrome, and nephrosis . . . . .	.580–589	2,210	10.2	2,180	10.1	9,630	11.0	9,270	10.8	25,990	9.9	25,140	9.6
Acute glomerulonephritis and nephrotic syndrome . . . . .	.580–581	20	*	50	*	80	*	100	*	260	0.1	230	0.1
Chronic glomerulonephritis, nephritis and nephropathy, not specified as acute or chronic, and renal sclerosis, unspecified . . . . .	.582–583,587	60	*	100	*	580	0.7	480	0.6	1,440	0.5	1,560	0.6
Renal failure, disorders resulting from impaired renal function, and small kidney of unknown cause . . . . .	.584–586,588–589	2,130	9.8	2,030	9.4	8,970	10.3	8,690	10.1	24,290	9.2	23,360	8.9
Infections of kidney . . . . .	.590	100	*	60	*	360	0.4	240	0.3	850	0.3	860	0.3
Hyperplasia of prostate . . . . .	.600	30	*	50	*	170	0.2	170	0.2	430	0.2	430	0.2
Complications of pregnancy, childbirth, and the puerperium . . . . .	.630–676	50	*	—	*	110	0.1	80	*	350	0.1	330	0.1
Pregnancy with abortive outcome . . . . .	.630–638	—	*	—	*	10	*	—	*	30	*	30	*
Other complications of pregnancy, childbirth, and the puerperium . . . . .	.640–676	50	*	—	*	100	*	80	*	320	0.1	300	0.1
Congenital anomalies . . . . .	.740–759	980	4.5	1,060	4.9	3,820	4.4	3,820	4.4	11,550	4.4	11,690	4.5
Certain conditions originating in the perinatal period . . . . .	.760–779	1,070	4.9	950	4.4	4,230	4.8	4,370	5.1	13,270	5.0	14,070	5.4
Birth trauma, intrauterine hypoxia, birth asphyxia, and respiratory distress syndrome . . . . .	.767–769	120	0.5	160	0.7	660	0.7	630	0.7	2,010	0.8	2,170	0.8
Other conditions originating in the perinatal period . . . . .	.760–766,770–779	940	4.3	790	3.7	3,570	4.1	3,730	4.3	11,260	4.3	11,900	4.6
Symptoms, signs, and ill-defined conditions . . . . .	.780–799	3,350	15.4	3,570	16.6	14,590	16.7	14,570	16.9	42,240	16.0	41,160	15.8
All other diseases . . . . .	.Residual	19,360	89.3	19,010	88.2	79,510	91.0	76,110	88.4	216,850	82.3	206,430	79.0
Accidents and adverse effects . . . . .	.E800–E949	7,170	33.1	7,540	35.0	29,340	33.6	28,380	33.0	90,750	34.4	89,250	34.2
Motor vehicle accidents . . . . .	.E810–E825	3,290	15.2	3,620	16.8	13,710	15.7	13,260	15.4	44,220	16.8	43,070	16.5
All other accidents and adverse effects . . . . .	.E800–E807,E826–E949	3,880	17.9	3,920	18.2	15,630	17.9	15,120	17.6	46,530	17.6	46,190	17.7
Suicide . . . . .	.E950–E959	2,440	11.2	2,720	12.6	9,430	10.8	10,180	11.8	29,080	11.0	30,760	11.8
Homicide and legal intervention . . . . .	.E960–E978	1,480	6.8	1,930	9.0	7,230	8.3	7,570	8.8	22,030	8.4	23,560	9.0
All other external causes . . . . .	.E980–E999	180	0.8	120	0.5	810	0.9	690	0.8	2,390	0.9	2,400	0.9
Human immunodeficiency virus infection <sup>2</sup> . . . . .	*042–*044	2,940	13.6	3,750	17.4	12,790	14.6	14,700	17.1	40,450	15.3	42,220	16.2
Alzheimer's disease . . . . .	.331.0	1,940	8.9	1,780	8.2	8,120	9.3	7,460	8.7	21,140	8.0	19,500	7.5

— Quantity zero. \* Figure does not meet standards of reliability or precision; see [Technical notes](#). 0.0 Quantity more than zero but less than 0.05.

<sup>1</sup>Includes data for deaths due to Human immunodeficiency virus infection (categories \*042–\*044) shown separately below; see [Technical notes](#).

<sup>2</sup>Included in All other infectious and parasitic diseases shown above.

NOTES: Figures include all revisions received from the States. Cumulative and 12-month figures for the current year reflect revisions received for previous months, and figures for earlier years may differ from those previously published. Data include adjustments for New York State, which is not included in the sample for April 1996.

**Table 7. Provisional number of deaths and death rates for 16 selected subcategories of Malignant neoplasms, including neoplasms of lymphatic and hematopoietic tissues: United States, April 1995 and 1996, cumulative figures 1995 and 1996, and 12 months ending with April 1995 and 1996**

[Data are provisional, estimated from a 10-percent sample of deaths. Rates on an annual basis per 100,000 estimated population. Because of rounding of estimates, figures may not add to totals. For method of computation and information on standard errors of the estimates, see [Technical notes](#)]

Cause of death (Based on the Ninth Revision, International Classification of Diseases, 1975)	April				January–April				12 months ending with April			
	1996		1995		1996		1995		1996		1995	
	Number	Rate	Number	Rate	Number	Rate	Number	Rate	Number	Rate	Number	Rate
Malignant neoplasms, including neoplasms of lymphatic and hematopoietic tissues <sup>1</sup> . . . .140–208	43,260	199.5	44,500	206.5	182,930	209.4	180,830	210.0	538,540	204.3	542,520	207.6
Malignant neoplasm of esophagus . . . . .150	980	4.5	780	3.6	3,800	4.3	3,600	4.2	10,560	4.0	10,940	4.2
Malignant neoplasm of stomach . . . . .151	960	4.4	1,170	5.4	4,220	4.8	4,600	5.3	13,440	5.1	14,000	5.4
Malignant neoplasms of colon, rectum, rectosigmoid junction, and anus . . . . .153,154	4,340	20.0	4,430	20.5	19,280	22.1	18,790	21.8	56,310	21.4	58,270	22.3
Malignant neoplasm of pancreas . . . . .157	2,210	10.2	2,400	11.1	9,060	10.4	9,070	10.5	27,370	10.4	26,970	10.3
Malignant neoplasms of trachea, bronchus, and lung . . . . .162	12,280	56.6	12,440	57.7	52,130	59.7	50,420	58.5	151,370	57.4	150,570	57.6
Malignant melanoma of skin . . . . .172	690	3.2	650	3.0	2,060	2.4	2,370	2.7	6,710	2.5	7,120	2.7
Malignant neoplasm of cervix uteri . . . . .180	320	1.5	450	2.1	1,410	1.6	1,330	1.5	4,850	1.8	4,430	1.7
Malignant neoplasms of body of uterus and of uterus, part unspecified . . . . .179,182	460	2.1	570	2.6	1,930	2.2	2,070	2.4	5,980	2.3	6,020	2.3
Malignant neoplasm of ovary . . . . .183.0	990	4.6	1,010	4.7	4,380	5.0	4,600	5.3	13,370	5.1	14,190	5.4
Malignant neoplasm of prostate . . . . .185	2,920	13.5	3,000	13.9	11,600	13.3	12,150	14.1	33,990	12.9	36,030	13.8
Malignant neoplasm of bladder . . . . .188	1,010	4.6	930	4.3	4,030	4.6	4,050	4.7	11,520	4.4	10,970	4.2
Malignant neoplasms of kidney and other and unspecified urinary organs . . . . .189	990	4.6	950	4.4	3,920	4.5	3,850	4.5	11,620	4.4	11,280	4.3
Malignant neoplasms of brain and other and unspecified parts of nervous system . . . . .191,192	880	4.1	930	4.3	4,090	4.7	3,760	4.4	11,870	4.5	12,090	4.6
Hodgkin's disease . . . . .201	120	0.5	150	0.7	630	0.7	510	0.6	1,650	0.6	1,490	0.6
Malignant lymphoma other than Hodgkin's disease . . . . .200,202	1,590	7.3	1,900	8.8	7,410	8.5	7,820	9.1	22,860	8.7	22,930	8.8
Multiple myeloma and other immunoproliferative neoplasms . . . . .203	940	4.3	890	4.1	3,680	4.2	3,620	4.2	10,420	4.0	10,420	4.0

<sup>1</sup>Includes figures for subcategories not shown.

NOTES: Figures include all revisions received from the States. Cumulative and 12-month figures for the current year reflect revisions received for previous months, and figures for earlier years may differ from those previously published. Data include adjustments for New York State, which is not included in the sample for April 1996.

**Table 8. Provisional number of deaths and death rates for firearm mortality: United States, April 1995 and 1996, cumulative figures 1995 and 1996, and 12 months ending with April 1995 and 1996**

[Data are provisional, estimated from a 10-percent sample of deaths. Rates on an annual basis per 100,000 estimated population. Because of rounding of estimates, figures may not add to totals. For method of computation and information on standard errors of the estimates, see [Technical notes](#)]

Cause of death (Based on the Ninth Revision, International Classification of Diseases, 1975)	April				January–April				12 months ending with April			
	1996		1995		1996		1995		1996		1995	
	Number	Rate	Number	Rate	Number	Rate	Number	Rate	Number	Rate	Number	Rate
Injury by firearms. . . . .E922,E955.0–E955.4,E965.0–965.4,E970,E985.0–E985.4	2,550	11.7	3,050	14.1	11,610	13.3	12,180	14.1	34,980	13.3	38,120	14.6
Accident caused by firearm missile . . . . .E922	80	*	60	*	440	0.5	450	0.5	1,360	0.5	1,560	0.6
Suicide by firearms . . . . .E955.0–E955.4	1,530	7.1	1,620	7.5	6,030	6.9	6,300	7.3	17,710	6.7	19,310	7.4
Homicide and legal intervention by firearms. . . . .E965.0–E965.4,E970	910	4.2	1,350	6.3	5,050	5.8	5,320	6.2	15,680	5.9	16,920	6.5
Injury by firearms, undetermined whether accidentally or purposely inflicted. . . . .E985.0–E985.4	30	*	20	*	90	*	110	0.1	230	0.1	330	0.1

\* Figure does not meet standards of reliability or precision; see [Technical notes](#).

NOTES: Figures include all revisions received from the States. Cumulative and 12-month figures for the current year reflect revisions received for previous months, and figures for earlier years may differ from those previously published. Data include adjustments for New York State, which is not included in the sample for April 1996.

**Table 9. Provisional number of deaths under 1 year and infant mortality rates, by age and for 10 selected causes: United States, April 1995 and 1996, cumulative figures 1995 and 1996, and 12 months ending with April 1995 and 1996**

[Data are provisional, estimated from a 10-percent sample of deaths. Rates on an annual basis per 100,000 live births. Because of rounding of estimates, figures may not add to totals. For method of computation and information on standard errors of the estimates, see [Technical notes](#)]

	April		January–April				12 months ending with April					
	1996		1995		1996		1995		1996		1995	
	Number	Rate	Number	Rate	Number	Rate	Number	Rate	Number	Rate	Number	Rate
<i>Age and cause of death (Based on the Ninth Revision, International Classification of Diseases, 1975)</i>												
Total, under 1 year . . . . .	2,400	762.0	2,300	736.4	9,500	753.2	10,100	784.2	28,700	745.3	30,900	781.2
Under 28 days . . . . .	1,590	510.4	1,370	431.5	5,950	470.1	6,170	478.9	18,450	478.7	19,580	494.9
28 days–11 months . . . . .	780	250.4	960	302.4	3,580	282.9	3,930	305.1	10,240	265.7	11,380	287.6
Certain gastrointestinal diseases. . . . .008–009,535,555–558	40	*	30	*	80	*	70	*	210	5.4	240	6.1
Pneumonia and influenza. . . . .480–487	50	*	50	*	160	12.6	160	12.4	360	9.3	360	9.1
Congenital anomalies . . . . .740–759	540	173.3	570	179.5	2,070	163.6	2,150	166.9	6,080	157.8	6,730	170.1
Disorders relating to short gestation and unspecified low birthweight . . . . .765	370	118.8	270	85.0	1,200	94.8	1,280	99.4	3,480	90.3	3,920	99.1
Birth trauma . . . . .767	10	*	–	*	90	*	30	*	250	6.5	160	4.0
Intrauterine hypoxia and birth asphyxia . . . . .768	50	*	50	*	180	14.2	170	13.2	480	12.5	560	14.2
Respiratory distress syndrome. . . . .769	70	*	110	34.6	370	29.2	400	31.0	1,190	30.9	1,380	34.9
Other conditions originating in the perinatal period. . . . .760–764,766,770–779	570	183.0	500	157.5	2,340	184.9	2,390	185.5	7,700	199.8	7,800	197.1
Sudden infant death syndrome . . . . .798.0	220	70.6	320	100.8	1,030	81.4	1,170	90.8	2,770	71.9	3,470	87.7
All other causes . . . . .Residual	460	147.7	450	141.7	2,010	158.8	2,280	177.0	6,160	159.8	6,340	160.2

\* Figure does not meet standards of reliability or precision; see [Technical notes](#).

– Quantity zero.

NOTES: Figures include all revisions received from the States. Cumulative and 12-month figures for the current year reflect revisions received for previous months, and figures for earlier years may differ from those previously published. Data include adjustments for New York State, which is not included in the sample for April 1996.



## Technical notes

### Nature and sources of data

Data in this report are provisional unless otherwise specified and include only events occurring within the United States (50 States and the District of Columbia). Mortality data exclude fetal deaths. Data for the Commonwealth of Puerto Rico are not included in the U.S. totals.

Birth, death, and infant death figures in [tables 2](#) and [4](#) for each State are estimates by State of residence. These estimates are derived by applying adjustment ratios to the actual counts of certificates for all events occurring in the State and received in registration offices during a 1-month period regardless of date of the event. The adjustment ratios for each data year represent the observed relationship between final State occurrence and residence figures for the three most recent years for which final data were available and are expressed as a single ratio for each State. As in previous years, monthly State marriage and divorce figures represent the actual count of all events occurring in the State (State of occurrence) that were received in the registration offices during the 1-month period. Delay in the receipt of certificates in a registration office may result in a low State figure for a given month followed by a high figure for the month(s) in which the delayed records are received. Data for previous months and cumulative data include revised figures received from the States.

Figures for births, deaths, and infant deaths for California in [tables 2](#) and [4](#) contain adjustments for varying lengths of State reporting periods. Figures for Texas for all events shown in [tables 2–4](#) also are adjusted for varying lengths of State reporting periods. The figures for both States are adjusted by the ratio between the number of days in the data month and the number of days in the State reporting period. The adjusted figures are included in the U.S. totals shown elsewhere in this report.

U.S. totals for births, deaths, and infant deaths are based on the State estimates by State of residence and, therefore, in effect, exclude events to nonresidents of the United States. Events to nonresidents of the United States are included in all

marriage and divorce figures. The effect of excluding events to nonresidents from the U.S. totals is small.

Provisional totals for the United States include estimates for State data shown as not available. Provisional totals for births and marriages for the entire United States include adjustments for observed differences between provisional and final monthly figures.

Divorce figures include reported annulments. The monthly national divorce estimate is obtained by multiplying the total for the reporting areas by the ratio observed between the most recent final annual divorce total for the United States and the provisional total for the reporting areas combined.

*Random variation*—Although the counts in this report are not subject to sampling variability (except the Current Mortality Sample), they may be affected by random variation. When the number of events is small and the probability of such an event is small, considerable caution must be observed in interpreting the data. Such infrequent events may be assumed to follow a Poisson probability distribution. For this distribution a simple approximation may be used to estimate the random variation as follows:

If  $N$  is the number of events in the population and  $R$  is the corresponding rate, the chances are 19 in 20 that

$$1. N - 2\sqrt{N} \text{ and } N + 2\sqrt{N}$$

covers the “true” number of events.

$$2. R - 2 \frac{R}{\sqrt{N}} \text{ and } R + 2 \frac{R}{\sqrt{N}}$$

covers the “true” rate.

If the rate  $R_1$  corresponding to  $N_1$  events is compared with the rate  $R_2$  corresponding to  $N_2$  events, the difference between the two rates may be regarded as statistically significant at the 0.05 level if it exceeds

$$2 \sqrt{\frac{R_1^2}{N_1} + \frac{R_2^2}{N_2}}$$

Additional information on random variation in numbers of events, rates, and ratios may be found in the technical appendixes of *Vital Statistics of the United States, 1990, Volumes I and II*.

### Rates

Rates are on an annual basis and, except for infant mortality rates, are per 1,000 or 100,000 estimated population residing in the United States. The populations used for computing these rates are furnished by the U.S. Bureau of the Census. Rates shown in this report beginning with 1992 were computed using populations based on the 1990 Census enumeration comparable to those used for final data. Monthly rates are based on populations estimated for the specific month. Year-to-date rates are averages of monthly rates that have been weighted by the number of days in the corresponding months. Rates for 12-month periods are the sum of events for the period per population estimated at the midpoint of the period.

Infant mortality rates are deaths under 1 year of age for the specified period (monthly, year-to-date, or 12-month period) per 1,000 or 100,000 live births. Births used for computing monthly and year-to-date infant mortality rates are adjusted for monthly variation in the number of births. Births used to compute 12-month rates do not contain this adjustment. Births used for computing infant mortality rates are not corrected for observed differences between provisional and final monthly figures as described earlier in “Nature and sources of data.” Because monthly infant mortality rates are based on relatively few events, they are highly variable. Therefore, comparisons of monthly infant mortality rates should be interpreted cautiously; see “[Random variation](#).”

Age-adjusted death rates are used to compare relative mortality risks across groups and over time. However, they should be viewed as constructs or indexes rather than as direct or actual measures of mortality risk. Statistically, they are weighted averages of the age-specific death rates, where the weights represent the fixed population proportions by age. See chapter 5 of an earlier report (1). The age-adjusted death rates presented in this report were computed by the direct method, that is, by applying age-specific death rates to the U.S. standard million population (2). See also chapter 10 of an earlier report (1). Age groups in [table 5](#) were used to compute the age-adjusted

rates shown in that table. It is important not to compare age-adjusted rates with crude rates.

### Current Mortality Sample

The Current Mortality Sample (CMS) is a 10-percent systematic sample of death certificates drawn each month after the certificates are counted in the State registration offices. Deaths and death rates for the United States by age, race, sex, and cause are estimated based on the sample. Because of the additional time required to select and process the certificates, data based on the CMS are published 1 month after publication of the U.S. and State counts. Complete information concerning the underlying cause of death sometimes is not available when the sample is drawn. As a result estimates based on sample counts for certain causes are biased. Correction for bias is not made in this report.

Estimated numbers of deaths based on the sample were proportionately adjusted to be consistent with estimates based on the count of death certificates received in State registration offices.

*HIV infection*—Beginning with data for 1987, the National Center for Health Statistics introduced categories \*042–\*044 for classifying and coding Human immunodeficiency virus (HIV) infection. The asterisks before the categories indicate that these codes are not part of the

*Ninth Revision, International Classification of Diseases*. Deaths classified to these categories are included in All other infectious and parasitic diseases in the List of 72 Selected Causes of Death and are also shown separately at the bottom of table 6.

*Sampling variability*—Because the estimates of deaths and death rates presented in this report with the exception of total deaths and deaths under 1 year are based on a sample of death certificates, they are subject to sampling variability. The estimated relative standard error in the following table is a measure of the

**Relative standard errors for estimated numbers of deaths from the Current Mortality Sample expressed as a percent of the estimate**

Estimated number of deaths	Relative standard error of estimate (as percent)	
	170,000 estimated deaths each month	2,000,000 estimated deaths each year
10 . . . . .	94.9	94.9
20 . . . . .	67.1	67.1
50 . . . . .	42.4	42.4
100 . . . . .	30.0	30.0
200 . . . . .	21.2	21.2
500 . . . . .	13.4	13.4
1,000 . . . . .	9.5	9.5
2,000 . . . . .	6.7	6.7
5,000 . . . . .	4.2	4.2
10,000 . . . . .	2.9	3.0
20,000 . . . . .	2.0	2.1
50,000 . . . . .	1.1	1.3
100,000 . . . . .	0.6	0.9
200,000 . . . . .	...	0.6
500,000 . . . . .	...	0.4
1,000,000 . . . . .	...	0.2

sampling error of the estimated number of deaths (or of the estimated death rate) expressed as a percent of the estimate. The first column refers to monthly estimates; the second to annual; cumulative year-to-date totals fall between the two.

The chances are about 2 in 3 that the percent difference between an estimate and the result of a complete count is less than the percent shown. The chances are about 19 in 20 that the percent difference is less than twice the percent shown. A figure based on 100 or fewer estimated deaths has a relative standard error of 30 percent or more and is, therefore, considered unreliable. A rate based on 100 or fewer estimated deaths has been replaced by an asterisk.

Unless otherwise specified comparisons made in the text between death rates based on the CMS were statistically significant at the 0.05 level of significance. Lack of comment in the text about any two rates does not mean that the difference was tested and found not to be significant at this level.

### References

1. Feinleib M, Zarate AO, eds. Reconsidering age adjustment procedures: Workshop proceedings. National Center for Health Statistics. Vital Health Stat 4(29). 1992.
2. Grove RD, Hetzel AM. Vital statistics rates in the United States, 1940–1960. Public Health Service. Washington: National Center for Health Statistics. 1968.

---

**Suggested citation**

National Center for Health Statistics. Births, marriages, divorces, and deaths for May 1996. Monthly vital statistics report; vol 45 no 5. Hyattsville, Maryland: Public Health Service. 1996.

---

**Copyright information**

All material appearing in this report is in the public domain and may be reproduced or copied without permission; citation as to source, however, is appreciated.

---

**National Center for Health Statistics**

Director  
Edward J. Sondik, Ph.D.

Deputy Director  
Jack R. Anderson

**Division of Vital Statistics**

Director  
Mary Anne Freedman

---

**DEPARTMENT OF  
HEALTH & HUMAN SERVICES**

Public Health Service  
Centers for Disease Control and Prevention  
National Center for Health Statistics  
6525 Belcrest Road  
Hyattsville, Maryland 20782

FIRST CLASS MAIL  
POSTAGE & FEES PAID  
PHS/NCHS  
PERMIT NO. G-281

---

**OFFICIAL BUSINESS  
PENALTY FOR PRIVATE USE, \$300**

---

To receive this publication regularly, contact the National Center for Health Statistics by calling 301-436-8500  
E-mail: [nchsquery@nch10a.em.cdc.gov](mailto:nchsquery@nch10a.em.cdc.gov)  
Internet: <http://www.cdc.gov/nchswww/nchshome.htm>

---

DHHS Publication No. (PHS) 97-1120  
7-0097 (11/96)