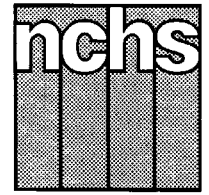


Monthly Vital Statistics Report



Provisional Data From the CENTERS FOR DISEASE CONTROL AND PREVENTION/National Center for Health Statistics

Births, Marriages, Divorces, and Deaths for April 1996

Births

According to provisional reports, an estimated 309,000 births occurred in the United States during April 1996. This was a 1-percent decrease from the provisional number of births reported for April 1995 (313,000). The birth rate, 14.2 live births per 1,000 population, was 2 percent lower than the rate of 14.5 for April 1995. The fertility rate, 63.3 live births per 1,000 women 15–44 years, was 1 percent lower than the comparable rate for April 1995 (64.1). The seasonally adjusted fertility rate (64.9) was also 1 percent lower than the comparable rate for April 1995 (65.8).

During the first 4 months of 1996, an estimated 1,265,000 births occurred, a

2-percent decrease from the 1,289,000 reported for the first one-third of 1995. The birth rate for this period decreased by 3 percent, from 15.0 in 1995 to 14.5 in 1996. The fertility rate for the first one-third of 1996 was 64.3, 3 percent lower than the rate for the first third of 1995 (66.0).

An estimated 3,869,000 live births occurred in the 12-month period ending with April 1996, a decline of 3 percent from the 3,970,000 births reported for the same period a year earlier. The birth rate of 14.7 was 3 percent lower than the rate of 15.2 for the preceding 12-month period. The fertility rate for the most recent 12-month period was 65.0, 3 percent lower than the rate for the 12 months ending with April 1995 (66.8). These lower rates

continue the generally downward trend observed since early 1991.

Natural increase

As a result of natural increase, the excess of births over deaths, an estimated 115,000 people, or 5.3 persons per 1,000 population, were added to the population during April 1996.

For the 12-month period ending with April 1996, 1,563,000 persons were added to the population. This represented a rate of natural increase of 6.0, 6 percent lower than the rate of 6.4 for the preceding 12-month period. The decline in the rate of natural increase was due to a larger decrease in the birth rate than the decrease in the death rate.

Provisional Vital Statistics for the United States

[Rates for infant deaths are deaths under 1 year per 1,000 live births; fertility rates are live births per 1,000 women aged 15–44 years; all other rates are per 1,000 total population. Data are subject to monthly reporting variation; see [Technical notes](#)]

Item	April		January–April				12 months ending with April						
	Number		Rate		Number		Rate		Number		Rate		
	1996	1995	1996	1995	1996	1995	1996	1995	1996	1995	1996	1995	1994
Live births	309,000	313,000	14.2	14.5	1,265,000	1,289,000	14.5	15.0	3,869,000	3,970,000	14.7	15.2	15.5
Fertility rate	63.3	64.1	64.3	66.0	65.0	66.8	67.9
Deaths	194,000	200,000	8.9	9.3	819,000	821,000	9.4	9.5	2,306,000	2,297,000	8.7	8.8	8.8
Infant deaths	2,400	2,300	7.6	7.4	9,500	10,100	7.5	7.8	28,700	30,900	7.5	7.8	8.2
Natural increase	115,000	113,000	5.3	5.2	446,000	468,000	5.1	5.5	1,563,000	1,673,000	6.0	6.4	6.7
Marriages	169,000	165,000	8.1	7.9	579,000	571,000	6.9	6.8	2,344,000	2,348,000	8.9	9.0	9.0
Divorces	94,000	98,000	4.4	4.6	368,000	381,000	4.2	4.4	1,156,000	1,185,000	4.4	4.5	4.6
Population base (in millions)	264.6	262.2	263.6	261.6	258.9

... Category not applicable.

NOTES: Figures include revisions received from the States. Twelve-month figures for the current year reflect revisions received for previous months, and figures for earlier years may differ from those previously published.



U.S. DEPARTMENT OF HEALTH AND HUMAN SERVICES
Public Health Service
Centers for Disease Control and Prevention
National Center for Health Statistics



Marriages

An estimated 169,000 couples married in April 1996, 2 percent more than in April a year earlier (165,000). The current monthly marriage rate, 8.1 per 1,000 population, was 3 percent higher than the rate for April 1995 (7.9).

The number of marriages performed in the first one-third of 1996 was 579,000, 1 percent higher than in the comparable period for 1995 (571,000). The marriage rate for the 4-month period in 1996 (6.9) was also 1 percent higher than in 1995 (6.8).

Approximately 2,344,000 marriages were performed during the 12-month period ending with April 1996, a decrease of less than 1 percent from the number for the same period a year earlier (2,348,000). The marriage rate for the current 12-month period (8.9) was 1 percent lower than the 12-month ending rate for April 1995 (9.0).

Divorces

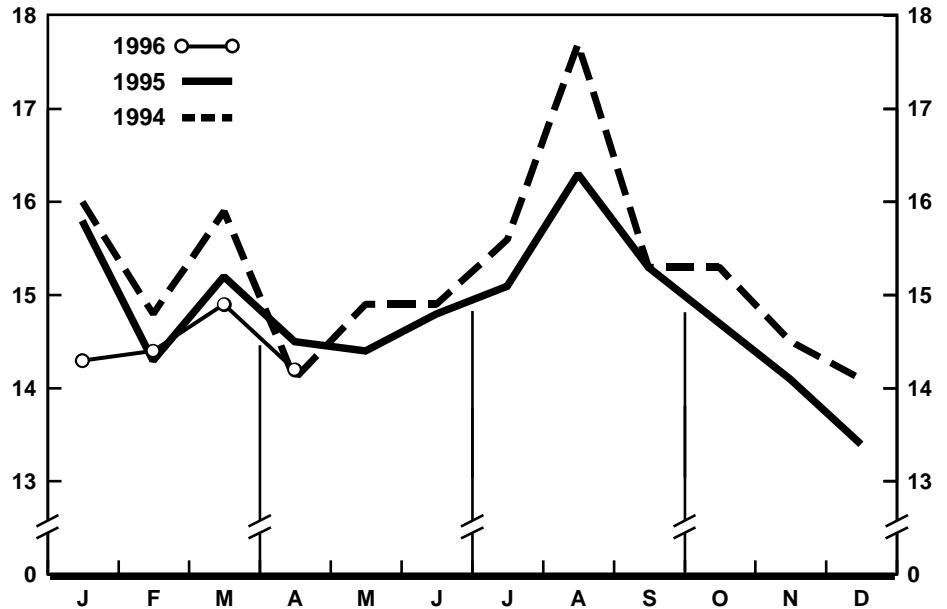
An estimated 94,000 couples divorced in April 1996, 4 percent fewer than the number in April 1995 (98,000). The divorce rate was 4.4 per 1,000 population for April 1996, also 4 percent lower than the rate for April 1995 (4.6).

The number of divorces granted in the first one-third of 1996 was 368,000, 3 percent fewer than the number granted for the same period in 1995 (381,000). The divorce rate for the 4-month period in 1996 (4.2) was 5 percent lower than the rate for the same period in 1995 (4.4).

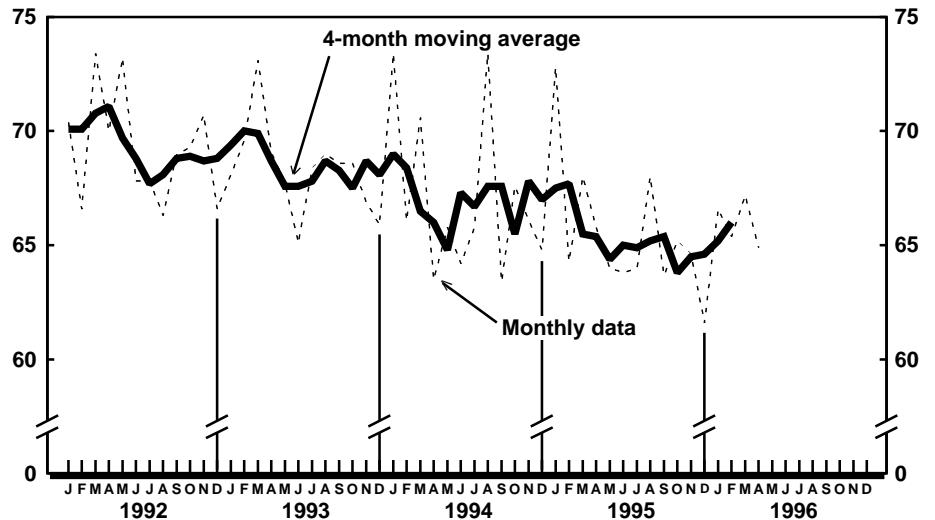
Approximately 1,156,000 couples divorced during the 12-month period ending with April 1996, 2 percent fewer than the number for the comparable period ending with April 1995 (1,185,000). The decline in the number contributed to a 2-percent decrease in the divorce rate—from 4.5 for the 12-month period ending with April 1995 to 4.4 for the current period.

Deaths

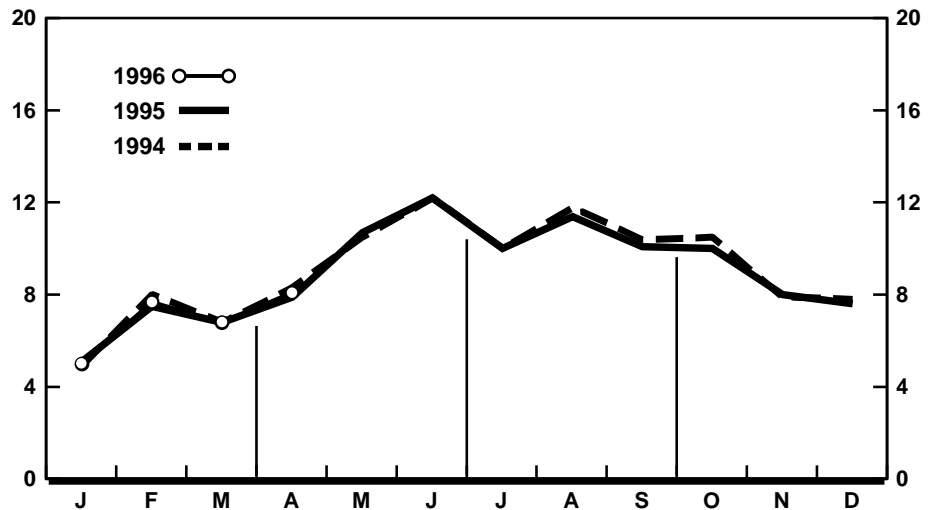
For April 1996 there were an estimated 194,000 deaths in the United States. The death rate was 8.9 deaths per 1,000 population, 4 percent lower than



Provisional birth rates per 1,000 population by month: United States, 1994-96



Provisional seasonally adjusted fertility rates per 1,000 women aged 15-44 years: United States, 1992-96



Provisional marriage rates per 1,000 population by month: United States, 1994-96

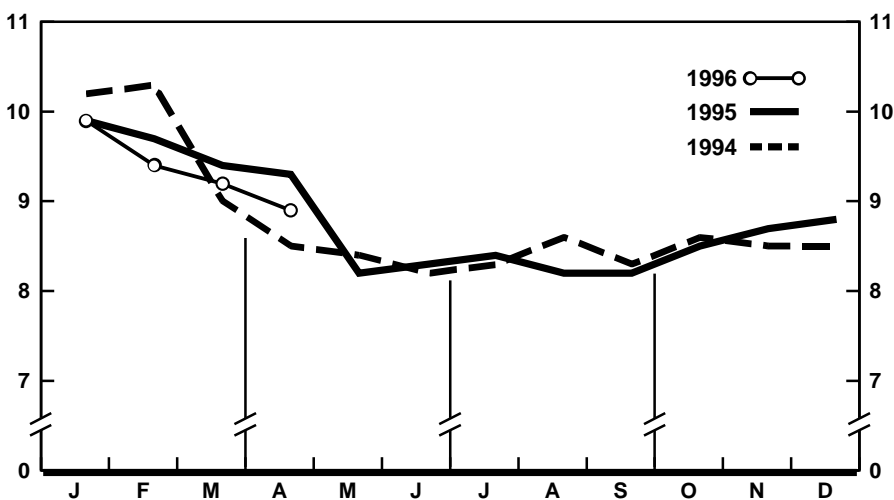
the rate of 9.3 for April a year earlier. Among the 194,000 deaths for April 1996 were 2,400 deaths at ages under 1 year.

According to provisional statistics, there were 819,000 deaths during the first 4 months of 1996, a decrease of less than 1 percent from the first 4 months of 1995 (821,000). The death rate, 9.4 per 1,000 population, was 1 percent lower than the rate for January–April 1995 (9.5). Among the 819,000 deaths for the first 4 months of 1996 were 9,500 deaths at ages under 1 year, yielding an infant mortality rate of 7.5 per 1,000 live births compared with a rate of 7.8 for the comparable 4-month period in 1995.

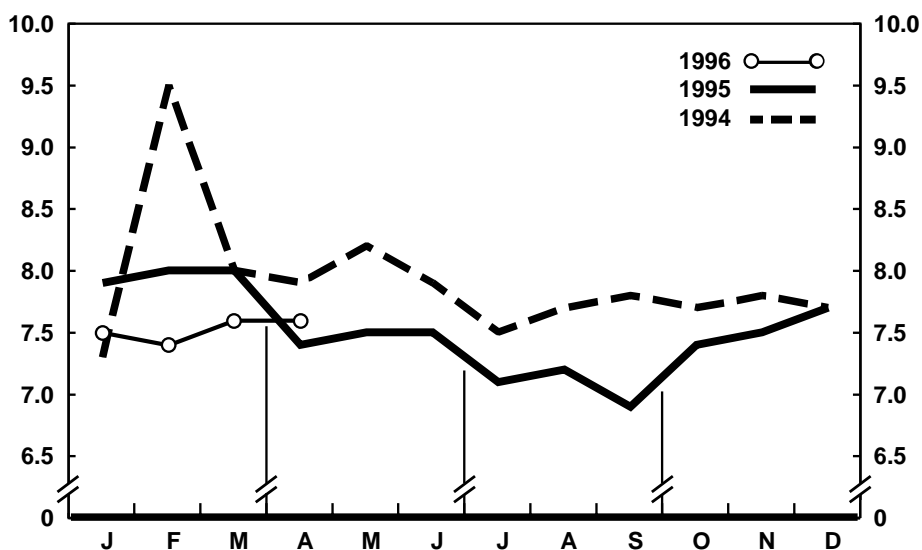
The death rate for the 12 months ending with April 1996 was 8.7 deaths per 1,000 population, 1 percent lower than the rate for the comparable 12-month period a year earlier (8.8). The infant mortality rate for this 12-month period was 7.5 per 1,000 live births, 4 percent lower than the rate of 7.8 for the 12 months ending with April 1995.

Current Mortality Sample, 12 months ending with March 1996—The provisional death rate for the 12 months ending with March 1996 was 877.6 per 100,000 population, 1 percent higher than the rate of 872.2 for the 12-month period ending March 1995. The provisional age-adjusted death rate for the 12-month period ending with March 1996 was 500.8 per 100,000 U.S. standard million population, 1 percent lower than the rate of 505.5 for the 12-month period ending with March 1995. Age-adjusted death rates control for changes and variations in the age composition of the population; therefore, they are better indicators than crude rates for showing changes in mortality risk over time and for showing differences between race-sex groups within the population. Among the race-sex groups, the estimated age-adjusted death rates decreased for white males. By age the death rate for the total population decreased for the following age groups: Under 1 year, 55–64 years, and 65–74 years.

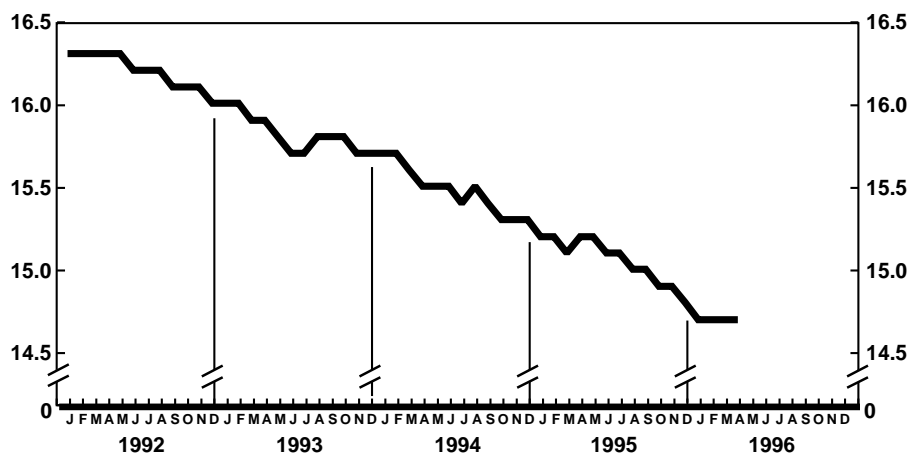
Among the major causes of death, the estimated death rate decreased between the two successive 12-month periods for Malignant neoplasms of genital organs. The death rate increased between the two



Provisional death rates per 1,000 population by month: United States, 1994–96



Provisional infant mortality rates per 1,000 live births by month: United States, 1994–96

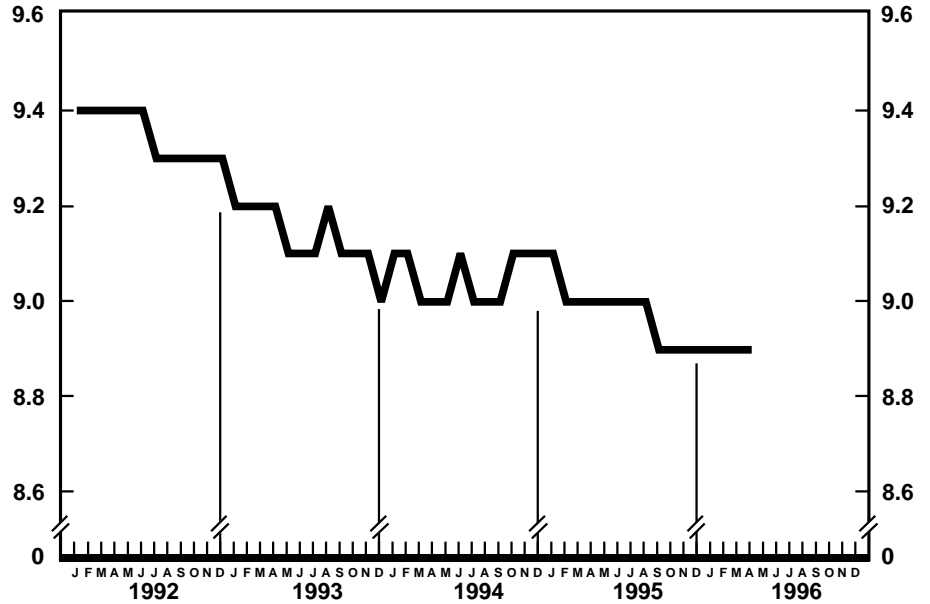


Provisional birth rates per 1,000 population for successive 12-month periods ending with month indicated: United States, 1992–96

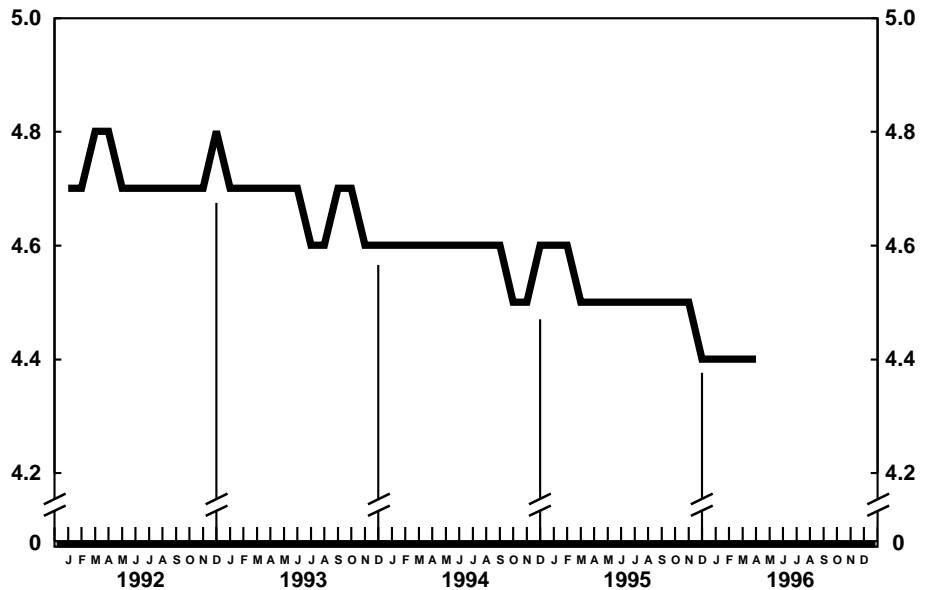
successive 12-month periods for Diabetes mellitus, Hypertension with or without renal disease, and Alzheimer's disease. The increase for Alzheimer's disease may reflect changes in diagnostic practices rather than real increases in mortality from this cause.

The death rate for injury by firearms for the 12 months ending with March 1996 was 13.5 per 100,000 population, a decrease from the rate of 14.5 for the comparable 12-month period a year earlier.

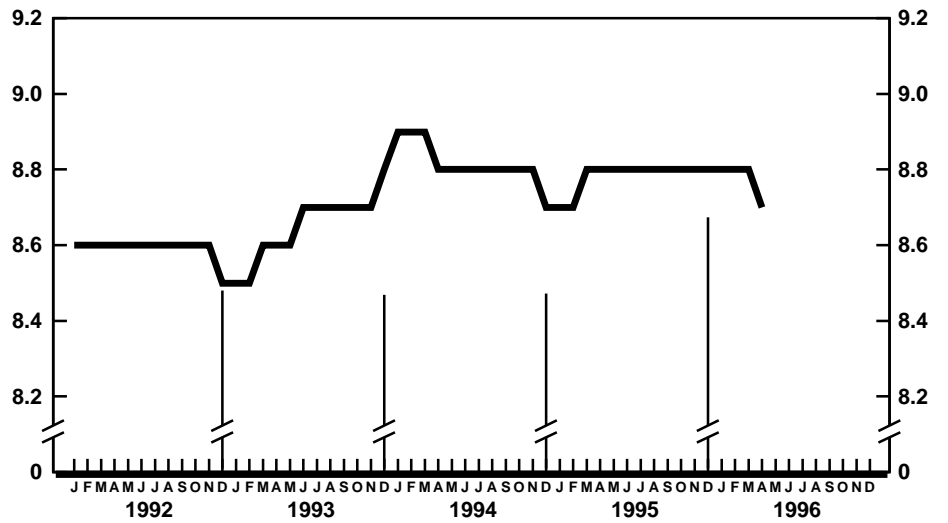
The infant mortality rate for the 12 months ending with March 1996 was 743.5 per 100,000 live births, 6 percent lower than the rate of 786.5 for the same 12-month period a year earlier. For infants under 28 days of age, the 12-month rate ending March 1996 was 472.7 compared with a rate of 496.8 for the 12-month period a year earlier. The infant mortality rate for infants 28 days–11 months of age was 269.8 compared with a rate of 289.2 for the 12-month period a year earlier. The changes in the mortality rates for infants under 28 days of age and for infants aged 28 days–11 months were not statistically significant. Among causes of infant death, the infant mortality rate showed no significant change between the two successive 12-month periods.



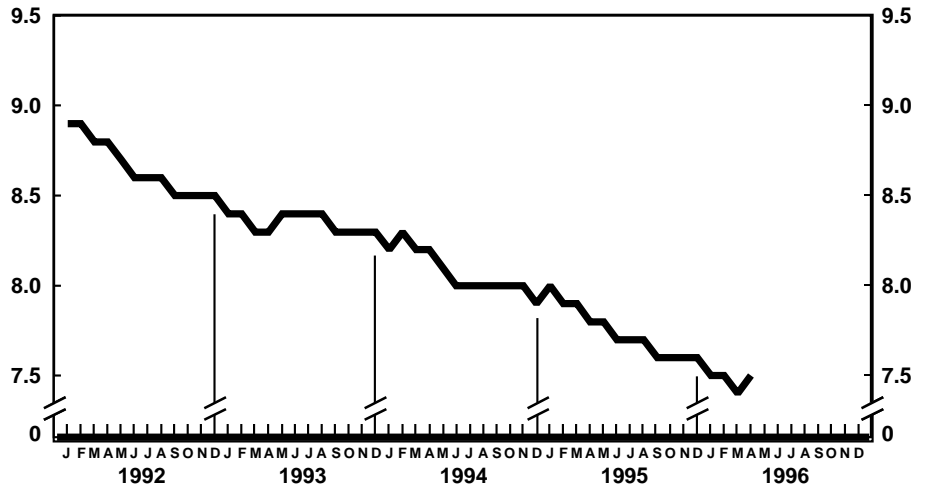
Provisional marriage rates per 1,000 population for successive 12-month periods ending with month indicated: United States, 1992–96



Provisional divorce rates per 1,000 population for successive 12-month periods ending with month indicated: United States, 1992–96



Provisional death rates per 1,000 population for successive 12-month periods ending with month indicated: United States, 1992-96



Provisional infant mortality rates per 1,000 live births for successive 12-month periods ending with month indicated: United States, 1992-96

Table 1. Provisional number of live births, marriages, divorces, deaths, and infant deaths and rates, by month: United States, January 1995–April 1996[Data are provisional and are subject to monthly reporting variation; see [Technical notes](#)]

Period	Live births				Marriages		Divorces		Deaths		Infant deaths	
	Number	Rate per 1,000 women aged 15–44 years			Rate per 1,000 population		Rate per 1,000 population		Rate per 1,000 population		Rate per 1,000 live births	
		Unadjusted	Seasonally adjusted ¹		Number	Rate per 1,000	Number	Rate per 1,000	Number	Rate per 1,000	Number	Rate per 1,000
1995:												
January	350,000	15.8	69.4	72.8	111,000	5.1	96,000	4.3	220,000	9.9	2,700	7.9
February	287,000	14.3	63.1	64.3	146,000	7.5	89,000	4.4	194,000	9.7	2,400	8.0
March	338,000	15.2	67.1	68.0	148,000	6.8	98,000	4.4	208,000	9.4	2,700	8.0
April	313,000	14.5	64.1	65.8	165,000	7.9	98,000	4.6	200,000	9.3	2,300	7.4
May	321,000	14.4	63.5	64.0	238,000	10.7	103,000	4.6	184,000	8.2	2,500	7.5
June	318,000	14.8	65.2	63.8	263,000	12.2	104,000	4.8	180,000	8.3	2,400	7.5
July	337,000	15.1	66.6	64.0	224,000	10.0	97,000	4.4	188,000	8.4	2,400	7.1
August	364,000	16.3	72.1	68.0	254,000	11.4	99,000	4.4	184,000	8.2	2,400	7.2
September	331,000	15.3	67.6	63.7	219,000	10.1	99,000	4.6	178,000	8.2	2,200	6.9
October	328,000	14.7	64.9	65.2	224,000	10.0	98,000	4.4	190,000	8.5	2,500	7.4
November	306,000	14.1	62.6	64.6	174,000	8.0	95,000	4.4	188,000	8.7	2,300	7.5
December	300,000	13.4	59.3	61.6	169,000	7.6	92,000	4.1	197,000	8.8	2,400	7.7
1996:												
January	320,000	14.3	63.5	66.6	109,000	5.0	96,000	4.3	221,000	9.9	2,400	7.5
February	302,000	14.4	64.1	65.4	155,000	7.7	86,000	4.1	198,000	9.4	2,300	7.4
March	334,000	14.9	66.3	67.2	147,000	6.8	92,000	4.1	206,000	9.2	2,500	7.6
April	309,000	14.2	63.3	64.9	169,000	8.1	94,000	4.4	194,000	8.9	2,400	7.6

¹The method of seasonal adjustment, developed by the U.S. Bureau of the Census, is described in *The X-11 Variant of the Census Method II Seasonal Adjustment Program*, Technical Paper No. 15 (1967 revision).

NOTE: Figures include all revisions received from the States and, therefore, may differ from those previously published.

Table 2. Provisional number of live births and deaths: Each division and State, April 1995 and 1996, and cumulative figures, 1994–96

[Data are estimates by State of residence; see [Technical notes](#)]

Area	Live births					Deaths				
	April		January–April			April		January–April		
	1996	1995	1996	1995	1994	1996	1995	1996	1995	1994
New England	9,250	14,648	54,338	58,919	55,860	9,610	9,905	38,677	42,218	40,149
Maine	1,136	1,236	4,244	4,343	4,298	973	956	3,961	3,815	4,038
New Hampshire	1,047	1,090	3,992	4,844	4,347	703	743	3,058	3,302	3,016
Vermont	548	573	2,111	2,221	1,958	370	419	1,731	1,846	1,618
Massachusetts	2,312	7,547	27,874	26,699	26,776	5,022	4,730	17,839	20,616	18,228
Rhode Island	1,182	937	4,026	3,679	4,079	780	850	3,186	3,403	3,228
Connecticut	3,025	3,265	12,091	17,133	14,402	1,762	2,207	8,902	9,236	10,021
Middle Atlantic	47,922	45,357	169,337	168,678	178,829	30,638	32,356	127,719	133,775	132,288
New York	23,935	24,270	88,179	84,199	84,199	13,493	15,004	56,937	60,784	61,077
New Jersey	12,234	8,399	31,518	33,705	34,492	6,348	6,139	25,544	27,073	25,144
Pennsylvania	11,753	12,688	49,640	50,774	51,738	10,797	11,213	45,238	45,918	46,067
East North Central	¹ 44,340	50,327	¹ 176,667	197,043	210,626	¹ 29,468	32,762	¹ 119,514	135,926	140,914
Ohio	12,854	12,617	48,801	48,205	54,767	9,351	9,967	37,353	36,928	39,067
Indiana	---	6,226	---	22,111	26,577	---	4,503	---	17,638	18,536
Illinois	14,518	14,833	59,258	59,460	60,667	8,809	8,653	36,569	37,770	37,907
Michigan	10,956	11,485	46,364	45,717	45,315	7,415	6,148	29,392	28,303	29,285
Wisconsin	6,012	5,166	22,244	21,550	23,300	3,893	3,491	16,200	15,287	16,119
West North Central	19,963	21,819	84,214	82,576	82,922	15,700	15,493	62,955	61,592	60,542
Minnesota	5,348	5,126	20,751	20,021	21,165	3,061	3,019	12,800	12,755	12,743
Iowa	2,498	2,483	10,851	10,484	10,879	3,895	2,292	12,203	8,742	9,293
Missouri	5,070	6,159	24,804	25,343	24,931	4,266	5,979	19,912	22,174	20,114
North Dakota	711	722	2,725	2,863	2,767	492	506	1,991	2,116	2,021
South Dakota	891	793	3,041	3,489	3,480	508	512	1,964	2,317	2,421
Nebraska	1,988	2,119	7,832	7,726	7,444	1,325	1,300	5,365	5,286	5,170
Kansas	3,457	4,417	14,210	12,650	12,256	2,153	1,885	8,720	8,202	8,780
South Atlantic	54,650	51,415	212,938	218,468	214,652	37,960	36,620	159,633	157,809	152,182
Delaware	912	747	3,447	3,140	3,362	538	505	2,221	2,111	2,134
Maryland	6,395	5,327	23,314	23,769	20,481	3,438	3,212	14,406	14,003	12,982
District of Columbia	657	686	2,689	2,958	3,251	484	536	2,106	2,250	2,385
Virginia	7,302	7,836	26,663	33,051	29,925	4,328	4,988	18,153	19,033	18,857
West Virginia	2,019	1,964	6,717	7,343	7,600	1,750	1,626	6,299	7,046	7,447
North Carolina	10,614	7,970	36,021	32,849	33,040	5,785	5,379	23,867	23,220	23,257
South Carolina	3,670	3,709	16,669	15,987	17,458	2,641	3,104	12,210	11,749	10,609
Georgia	8,602	7,766	37,820	38,657	35,720	5,082	4,366	22,072	20,790	20,568
Florida	14,479	15,410	59,598	60,714	63,815	13,914	12,904	58,299	57,607	53,943
East South Central	18,687	17,229	70,503	72,403	77,437	13,143	13,019	55,514	56,403	56,875
Kentucky	4,362	3,727	17,400	15,984	17,083	3,400	3,078	13,735	14,345	13,836
Tennessee	5,769	4,626	19,946	22,619	25,743	3,787	4,027	16,194	17,415	17,130
Alabama	4,627	5,891	20,330	20,725	20,292	3,786	3,727	15,982	15,335	16,121
Mississippi	3,929	2,985	12,827	13,075	14,319	2,170	2,187	9,603	9,308	9,788
West South Central	34,377	37,164	157,623	166,800	157,353	19,837	19,081	88,502	84,569	88,169
Arkansas	2,845	2,945	11,423	10,874	11,413	2,229	2,335	9,083	8,665	9,924
Louisiana	4,563	3,984	21,825	22,717	23,610	4,053	2,940	15,929	13,839	15,370
Oklahoma	3,114	3,574	14,352	14,758	15,321	2,759	2,781	12,004	11,512	11,541
Texas ²	23,855	26,661	110,023	118,451	107,009	10,796	11,025	51,486	50,553	51,334
Mountain	19,356	19,885	80,916	82,298	77,315	11,850	10,908	41,545	39,734	37,251
Montana	919	876	3,545	3,548	3,443	611	633	2,620	2,649	2,476
Idaho	1,648	1,343	6,247	5,485	5,848	718	635	2,875	2,807	2,909
Wyoming	569	479	2,033	2,134	2,025	293	303	1,147	1,274	1,154
Colorado	3,846	4,057	15,924	17,226	17,594	2,289	2,069	9,086	8,685	8,305
New Mexico	1,934	2,001	8,842	8,665	9,140	1,204	1,266	4,532	4,422	4,374
Arizona	5,370	5,378	25,281	25,924	18,419	4,522	3,799	12,721	11,872	10,248
Utah	3,481	3,486	12,781	12,502	12,641	1,022	828	3,844	3,578	3,687
Nevada	1,589	2,265	6,263	6,814	8,205	1,191	1,375	4,720	4,447	4,098
Pacific	54,304	55,184	226,948	233,492	235,131	21,150	29,410	107,983	109,338	101,760
Washington	6,710	6,115	26,877	24,391	23,715	3,447	4,306	14,107	13,244	13,593
Oregon	3,788	3,557	15,445	14,703	14,757	1,983	2,230	12,685	9,925	9,965
California ²	41,515	43,066	175,207	184,955	185,527	14,852	22,036	77,725	82,798	74,947
Alaska	975	798	3,356	3,509	4,919	205	199	729	714	788
Hawaii	1,316	1,648	6,063	5,934	6,213	663	639	2,737	2,657	2,467
Puerto Rico ³	---	---	---	---	---	---	---	---	---	---

--- Data not available.

¹Excludes figures for State(s) shown below as not available.

²Figures include adjustments for varying lengths of reporting periods; see [Technical notes](#).

³Data for Puerto Rico are not included in U.S. total figures.

NOTES: Figures include all revisions received from the States. Cumulative figures for the current year reflect revisions received for previous months, and figures for earlier years may differ from those previously published.

Table 3. Provisional number of marriages and divorces: Each division and State, April 1995 and 1996, and cumulative figures, 1994–96[By State of occurrence. Number of events reported; see [Technical notes](#). Divorces include reported annulments]

Area	Marriages					Divorces				
	April		January–April			April		January–April		
	1996	1995	1996	1995	1994	1996	1995	1996	1995	1994
New England	3,632	4,983	15,576	18,476	24,978	2,936	4,577	11,450	12,674	12,180
Maine	252	429	1,503	1,452	1,636	521	517	1,411	1,541	1,322
New Hampshire	415	325	1,696	1,579	1,756	312	363	1,508	1,578	1,619
Vermont	211	260	1,048	1,165	974	156	131	835	1,024	917
Massachusetts	1,029	2,070	6,150	9,413	15,320	928	2,555	3,366	4,314	3,795
Rhode Island	481	452	1,424	1,209	1,290	223	216	1,017	1,140	1,041
Connecticut	1,244	1,447	3,755	3,658	4,002	796	795	3,313	3,077	3,486
Middle Atlantic	19,372	17,632	56,072	58,437	56,900	9,143	10,953	37,587	39,685	37,863
New York ¹	11,201	9,427	33,673	34,435	31,779	3,686	5,807	17,348	18,779	18,312
New Jersey	3,562	3,701	10,151	10,599	10,642	2,256	2,019	8,256	8,062	7,546
Pennsylvania	4,609	4,504	12,248	13,403	14,479	3,201	3,127	11,983	12,844	12,005
East North Central	17,310	21,498	63,725	72,774	71,799	² 10,426	² 11,817	² 43,556	² 49,096	² 47,700
Ohio	5,258	6,033	16,774	20,878	19,961	2,940	4,075	13,125	16,447	15,865
Indiana	0	4,072	7,101	11,678	11,206	---	---	---	---	---
Illinois	5,906	5,571	19,516	19,874	20,385	3,031	3,556	11,740	13,183	13,145
Michigan	4,089	4,159	13,589	13,933	13,717	3,225	2,852	13,073	13,672	12,858
Wisconsin	2,057	1,663	6,745	6,411	6,530	1,230	1,334	5,618	5,794	5,832
West North Central	9,252	8,373	33,627	32,515	31,696	7,331	6,382	25,971	24,872	26,530
Minnesota	2,278	1,765	6,706	5,839	5,931	1,424	1,353	4,815	4,965	5,467
Iowa	1,020	1,142	4,251	4,555	4,389	1,782	894	4,561	3,813	3,867
Missouri	3,057	2,711	12,309	11,342	10,110	2,309	1,909	8,639	9,124	8,892
North Dakota	270	195	932	761	870	201	171	751	714	706
South Dakota	447	384	1,363	1,568	1,511	231	229	880	954	923
Nebraska	982	852	2,917	2,781	2,827	591	551	2,034	2,081	2,296
Kansas	1,198	1,324	5,149	5,669	6,058	793	1,275	4,291	3,221	4,379
South Atlantic	35,797	33,519	124,131	124,143	126,494	20,566	17,930	67,095	71,640	75,434
Delaware	393	426	1,193	1,170	1,166	299	299	1,096	1,322	1,005
Maryland	2,490	2,441	8,914	9,418	10,198	1,468	1,061	4,586	4,792	5,076
District of Columbia	152	160	418	430	439	115	199	323	447	701
Virginia	4,775	4,799	15,642	17,410	18,083	2,659	2,523	8,474	8,430	9,238
West Virginia	713	893	2,454	2,323	2,470	231	964	1,705	2,732	2,938
North Carolina	4,170	5,398	15,743	16,496	12,289	3,142	3,167	10,494	11,923	11,472
South Carolina	3,595	3,710	12,769	12,472	15,490	1,169	1,511	4,981	4,800	4,807
Georgia	4,989	4,858	17,722	17,947	18,579	2,978	2,681	11,172	11,470	11,919
Florida	14,520	10,834	49,276	46,477	47,780	8,505	5,525	24,264	25,724	28,278
East South Central	14,219	13,053	51,648	54,740	51,190	7,400	8,164	32,296	31,462	31,493
Kentucky	2,666	2,845	10,512	12,879	12,962	1,892	1,832	7,201	7,557	7,809
Tennessee	6,380	6,768	21,358	25,567	20,015	2,425	2,769	11,830	11,026	10,885
Alabama	3,667	1,828	13,790	10,411	12,033	2,348	2,583	8,730	8,110	8,612
Mississippi	1,506	1,612	5,988	5,883	6,180	735	980	4,535	4,769	4,187
West South Central	19,295	20,707	86,714	92,109	96,344	² 10,787	² 11,371	² 46,022	² 45,016	² 48,467
Arkansas	2,793	2,643	8,747	9,273	11,462	1,025	1,281	3,725	4,369	6,433
Louisiana	1,845	3,395	10,182	11,252	12,420	---	---	---	---	---
Oklahoma	2,189	1,983	7,743	7,635	8,093	1,766	1,693	6,728	7,075	7,019
Texas ³	12,468	12,686	60,042	63,949	64,369	7,996	8,397	35,569	33,572	35,015
Mountain	21,957	22,122	82,911	79,897	79,149	² 5,916	² 6,168	² 21,657	² 23,472	² 29,216
Montana	328	331	1,329	1,245	1,313	374	311	1,394	1,231	1,363
Idaho	892	817	3,756	4,213	4,448	654	555	2,378	2,259	2,499
Wyoming	325	273	1,062	1,037	971	332	320	1,047	1,136	981
Colorado	1,592	2,231	7,619	8,112	8,376	---	---	---	---	---
New Mexico ^{4,5}	1,330	1,106	4,951	4,022	3,311	1,036	875	3,891	3,397	3,134
Arizona ¹	3,884	3,382	12,988	12,317	12,013	2,145	2,161	8,439	8,179	7,611
Utah	1,493	1,619	5,959	6,067	5,655	945	927	2,918	3,178	3,089
Nevada	12,113	12,363	45,247	42,884	43,062	430	1,019	1,590	4,092	---
Pacific	20,903	16,201	91,289	69,328	75,856	² 3,283	² 3,561	² 16,707	² 16,806	² 17,579
Washington	1,863	2,545	10,529	10,087	10,057	1,191	1,741	9,070	9,773	9,506
Oregon	1,255	1,831	5,629	6,636	5,511	1,351	1,162	5,134	4,912	5,844
California	15,842	10,019	67,900	45,599	53,505	---	---	---	---	---
Alaska	328	324	1,286	1,368	1,439	258	221	935	947	1,097
Hawaii	1,615	1,482	5,945	5,638	5,344	483	437	1,568	1,774	1,132
Puerto Rico ⁶	---	---	---	---	---	---	---	---	---	---

--- Data not available.

¹Figures for marriages are marriage licenses issued for some counties.²Excludes figures for State(s) shown below as not available.³Figures include adjustments for varying lengths of reporting periods; see [Technical notes](#).⁴Figures for marriages are marriage licenses issued.⁵Figures for divorces include estimates for some counties.⁶Data for Puerto Rico are not included in U.S. total figures.

NOTES: Figures include all revisions received from the States. Cumulative figures for the current year reflect revisions received for previous months, and figures for earlier years may differ from those previously published.

Table 4. Provisional number of deaths under 1 year and infant mortality rates: Each division and State, 12 months ending with April 1995 and 1996

[Data are estimates by State of residence. Figures should be interpreted with caution because of conversion of place of occurrence to place of residence; see [Technical notes](#). Infant mortality rates are deaths under 1 year per 1,000 live births in specified area]

Area	12 months ending with April			
	1996		1995	
	Number	Rate	Number	Rate
New England	901	5.5	1,019	5.7
Maine	85	6.1	83	5.8
New Hampshire	58	4.1	93	6.2
Vermont	51	7.6	49	6.6
Massachusetts	381	5.0	487	5.8
Rhode Island	83	6.4	83	6.4
Connecticut	243	6.1	224	5.0
Middle Atlantic	3,982	7.5	4,225	7.8
New York	2,045	7.6	2,177	8.0
New Jersey	793	7.0	839	7.2
Pennsylvania	1,144	7.6	1,209	7.7
East North Central	14,510	8.3	5,515	8.8
Ohio	1,290	8.3	1,351	8.7
Indiana	---	---	809	10.3
Illinois	1,592	8.6	1,696	9.0
Michigan	1,127	8.4	1,142	8.1
Wisconsin	501	7.4	517	7.7
West North Central	1,782	7.0	1,944	7.7
Minnesota	385	6.1	418	6.6
Iowa	212	5.8	262	7.4
Missouri	577	7.8	615	8.1
North Dakota	40	4.7	55	6.3
South Dakota	74	7.3	128	12.0
Nebraska	174	7.5	202	8.7
Kansas	320	8.3	264	7.8
South Atlantic	5,592	8.6	5,787	8.7
Delaware	67	6.5	72	7.1
Maryland	606	8.4	644	8.6
District of Columbia	152	17.5	174	18.6
Virginia	666	8.0	725	7.3
West Virginia	157	7.7	147	6.9
North Carolina	957	9.1	998	9.8
South Carolina	474	9.4	438	8.9
Georgia	1,084	9.6	1,061	9.5
Florida	1,429	7.6	1,528	8.1
East South Central	2,068	9.3	2,170	9.6
Kentucky	396	7.6	407	8.0
Tennessee	640	9.0	723	10.0
Alabama	630	10.4	620	10.1
Mississippi	402	10.9	420	10.0
West South Central	3,442	7.3	3,701	7.7
Arkansas	275	7.9	312	9.2
Louisiana	597	9.0	643	9.5
Oklahoma	418	9.2	424	9.4
Texas ²	2,152	6.6	2,322	7.0
Mountain	1,697	7.1	1,770	7.1
Montana	82	7.3	99	8.9
Idaho	118	6.4	119	7.0
Wyoming	47	7.6	58	8.9
Colorado	350	7.2	360	6.7
New Mexico	179	6.6	235	8.5
Arizona	549	8.1	560	7.6
Utah	230	5.9	221	5.7
Nevada	142	6.8	118	5.9
Pacific	4,119	5.8	4,636	6.3
Washington	263	3.3	426	5.3
Oregon	252	5.8	272	6.4
California ²	3,417	6.2	3,738	6.4
Alaska	68	6.8	76	7.1
Hawaii	119	6.4	124	6.5
Puerto Rico ³	---	---	---	---

--- Data not available.

¹Excludes figures for State shown below as not available.

²Figures include adjustments for varying lengths of reporting periods; see [Technical notes](#).

³Data for Puerto Rico are not included in U.S. total figures.

NOTES: Figures include all revisions received from the States. Figures for the current year reflect revisions received for previous months, and figures for earlier years may differ from those previously published.

Table 5. Provisional number of deaths and death rates, by age, race, and sex, and age-adjusted death rates by race and sex: United States, March 1995 and 1996, cumulative figures 1995 and 1996, and 12 months ending with March 1995 and 1996

[Data are provisional, estimated from a 10-percent sample of deaths. Age-specific rates on an annual basis per 100,000 population in specified group; age-adjusted rates per 100,000 U.S. standard million population; see [Technical notes](#). Because of rounding of estimates, figures may not add to totals. For method of computation and information on standard errors of the estimates, see [Technical notes](#)]

Age, race, and sex	March				January–March				12 months ending with March							
	1996		1995		1996		1995		1996		1995					
	Number	Rate	Number	Rate	Number	Rate	Number	Rate	Number	Rate	Number	Rate				
All races, both sexes¹																
All ages	206,000	921.2	208,000	935.8	625,000	951.8	622,000	963.4	2,312,000	877.6	2,280,000	872.2				
Under 1 year.	} 3,880	79.1	4,010	82.0	7,200	² 748.4	7,800	² 819.9	28,700	² 746.2	31,000	² 793.8				
1–4 years					1,570	40.4	1,880	48.2	6,420	40.9	7,050	44.4				
5–14 years					2,190	22.9	1,980	21.2	8,430	22.1	8,750	23.2				
15–24 years					2,870	94.4	2,720	89.1	8,100	90.7	8,080	91.3	34,560	96.2	35,420	98.4
25–34 years					4,950	144.1	4,970	142.7	14,290	141.6	14,960	147.7	57,600	141.6	59,190	143.4
35–44 years	8,350	229.0	8,400	234.2	25,910	242.4	25,710	247.1	102,850	240.6	101,290	241.3				
45–54 years	12,400	458.0	11,930	457.3	36,720	463.1	36,690	486.1	143,190	454.8	137,550	454.8				
55–64 years	20,630	1,146.1	20,420	1,140.3	62,000	1,174.1	61,340	1,180.3	235,110	1,109.9	237,530	1,128.4				
65–74 years	42,850	2,703.1	43,670	2,743.0	128,390	2,756.5	130,910	2,831.9	476,430	2,539.7	482,830	2,574.4				
75–84 years	59,080	6,161.3	59,830	6,368.8	180,490	6,420.8	177,400	6,512.6	654,660	5,832.2	641,660	5,805.3				
85 years and over.	51,110	16,330.9	52,090	17,079.3	158,110	17,231.3	154,830	17,508.9	561,540	15,330.1	537,500	15,326.5				
Not stated	140	...	100	...	270	...	290	...	1,000	...	810	...				
Age-adjusted rate ³	519.9	...	527.1	...	532.3	...	544.6	...	500.8	...	505.5				
All races, male¹																
All ages	105,070	960.7	105,010	966.7	315,250	982.6	313,040	993.3	1,173,980	912.6	1,161,870	910.1				
Under 1 year.	} 2,160	86.0	2,280	91.0	3,920	² 797.2	4,270	² 881.4	15,970	² 811.5	17,220	² 862.3				
1–4 years					820	41.2	1,100	55.1	3,580	44.6	4,130	50.8				
5–14 years					1,350	27.6	1,180	24.8	5,190	26.5	5,220	27.0				
15–24 years					2,210	142.4	2,100	134.8	6,150	134.9	6,240	138.0	26,350	143.6	27,250	148.2
25–34 years					3,620	211.0	3,700	212.5	10,230	203.0	10,940	216.2	41,680	205.0	43,450	210.4
35–44 years	5,690	314.5	5,960	335.0	17,540	331.0	17,860	346.1	70,580	332.8	70,380	337.9				
45–54 years	8,010	605.7	7,800	612.2	23,550	607.9	23,260	630.9	91,090	592.2	86,520	585.3				
55–64 years	12,470	1,456.4	12,440	1,462.2	37,140	1,478.1	36,640	1,484.2	140,970	1,399.9	144,250	1,442.1				
65–74 years	24,610	3,486.0	25,170	3,560.7	73,400	3,521.7	74,800	3,645.2	272,230	3,263.8	275,310	3,312.6				
75–84 years	29,340	7,824.7	29,240	8,045.7	89,290	8,127.8	86,610	8,222.8	321,830	7,369.6	312,470	7,343.6				
85 years and over.	16,810	19,101.7	16,240	19,064.1	52,020	20,170.2	50,000	20,254.4	183,830	17,952.1	175,140	17,655.2				
Not stated	140	...	60	...	200	...	160	...	690	...	530	...				
Age-adjusted rate ³	669.7	...	681.2	...	680.4	...	698.0	...	643.0	...	650.3				
All races, female¹																
All ages	101,180	883.4	103,140	905.8	309,930	922.4	308,780	934.6	1,136,460	843.0	1,118,730	836.5				
Under 1 year.	} 1,710	71.4	1,730	72.4	3,240	² 692.9	3,490	² 755.4	12,680	² 675.5	13,790	² 721.2				
1–4 years					740	39.0	790	41.4	2,840	37.1	2,920	37.6				
5–14 years					840	18.0	800	17.5	3,250	17.4	3,530	19.2				
15–24 years					660	44.3	620	41.5	1,950	44.6	1,850	42.7	8,200	46.6	8,180	46.4
25–34 years					1,330	77.4	1,260	72.3	4,050	80.3	4,020	79.2	15,930	78.3	15,740	76.3
35–44 years	2,660	144.8	2,440	134.9	8,360	155.2	7,850	149.8	32,260	149.7	30,920	146.2				
45–54 years	4,390	317.0	4,130	309.5	13,170	324.7	13,430	347.6	52,100	323.5	51,030	330.0				
55–64 years	8,160	864.6	7,980	848.9	24,870	897.8	24,700	905.5	94,140	847.3	93,270	844.3				
65–74 years	18,240	2,074.5	18,500	2,090.2	55,350	2,142.5	56,110	2,182.9	204,200	1,960.1	207,520	1,987.2				
75–84 years	29,730	5,091.5	30,590	5,310.7	91,190	5,325.3	90,800	5,434.6	332,820	4,852.3	329,190	4,842.5				
85 years and over.	34,290	15,242.6	35,850	16,310.1	106,090	16,084.2	104,820	16,440.9	377,720	14,318.4	362,360	14,413.7				
Not stated	—	...	40	...	70	...	130	...	310	...	280	...				
Age-adjusted rate ³	395.2	...	398.0	...	409.7	...	417.6	...	382.4	...	384.5				
White																
All ages	177,650	957.2	178,980	968.7	539,280	990.3	534,750	997.4	1,986,580	909.1	1,959,670	903.0				
Under 1 year.	} 2,690	69.3	2,610	67.3	4,620	² 617.7	4,940	² 667.5	19,110	² 635.5	20,070	² 657.0				
1–4 years					1,090	35.5	1,250	40.5	4,480	36.2	4,680	37.3				
5–14 years					1,580	21.0	1,420	19.2	6,250	20.6	6,180	20.6				
15–24 years					2,120	87.5	1,880	77.1	5,700	80.1	5,590	79.0	24,640	86.0	24,930	86.8
25–34 years					3,680	131.5	3,640	127.8	10,130	123.1	10,880	131.4	40,070	120.7	42,530	126.0
35–44 years	5,920	195.0	5,830	195.1	18,560	208.7	17,940	207.0	73,600	206.8	72,190	206.5				
45–54 years	9,310	402.8	9,060	405.8	27,860	411.4	28,140	435.5	109,690	407.7	105,570	407.7				
55–64 years	16,900	1,087.6	16,390	1,058.2	50,420	1,106.0	49,330	1,097.4	191,230	1,045.4	193,180	1,060.6				
65–74 years	37,170	2,647.0	37,500	2,653.4	111,520	2,702.7	112,430	2,739.6	412,550	2,480.9	417,000	2,504.7				
75–84 years	52,630	6,052.7	54,080	6,348.4	162,100	6,359.8	159,860	6,471.7	587,930	5,777.0	578,150	5,775.1				
85 years and over.	47,140	16,554.3	47,930	17,263.3	145,520	17,428.3	142,750	17,733.5	516,290	15,494.9	494,620	15,452.0				
Not stated	80	...	50	...	170	...	220	...	750	...	570	...				
Age-adjusted rate ³	494.6	...	496.9	...	505.4	...	513.8	...	474.6	...	478.1				

See footnotes at end of table.

Table 5. Provisional number of deaths and death rates, by age, race, and sex, and age-adjusted death rates by race and sex: United States, March 1995 and 1996, cumulative figures 1995 and 1996, and 12 months ending with March 1995 and 1996—Con.

[Data are provisional, estimated from a 10-percent sample of deaths. Age-specific rates on an annual basis per 100,000 population in specified group; age-adjusted rates per 100,000 U.S. standard million population; see [Technical notes](#). Because of rounding of estimates, figures may not add to totals. For method of computation and information on standard errors of the estimates, see [Technical notes](#)]

Age, race, and sex	March				January–March				12 months ending with March			
	1996		1995		1996		1995		1996		1995	
	Number	Rate	Number	Rate	Number	Rate	Number	Rate	Number	Rate	Number	Rate
White male												
All ages.	89,350	981.0	89,030	982.5	268,480	1,004.7	266,050	1,011.8	998,500	931.4	986,810	927.1
Under 1 year.	} 1,470	73.8	1,460	73.4	2,500	² 651.2	2,750	² 725.7	10,750	² 697.1	11,150	² 712.9
1–4 years					580	36.9	790	49.9	2,600	41.0	2,830	44.0
5–14 years					960	24.7	860	22.5	3,800	24.4	3,670	23.8
15–24 years					1,610	129.5	1,450	116.0	4,220	115.3	4,260	117.1
25–34 years	2,750	194.7	2,770	192.6	7,400	178.4	8,100	193.7	29,600	176.5	31,630	185.5
35–44 years	4,100	269.3	4,190	279.7	12,680	284.1	12,680	291.7	51,180	286.8	50,970	290.8
45–54 years	6,060	530.8	5,990	543.5	17,970	537.3	18,040	565.6	70,310	529.2	66,920	523.3
55–64 years	10,250	1,371.4	10,200	1,370.8	30,280	1,380.9	29,880	1,383.6	115,890	1,317.5	118,590	1,355.2
65–74 years	21,280	3,377.8	21,820	3,452.2	63,640	3,437.5	64,810	3,532.2	236,990	3,181.5	239,860	3,229.1
75–84 years	26,220	7,683.4	26,450	7,999.7	80,330	8,035.4	78,200	8,160.9	290,710	7,317.1	282,350	7,307.2
85 years and over.	15,520	19,514.0	14,670	19,085.9	47,790	20,492.2	45,560	20,455.7	167,650	18,124.3	159,570	17,769.5
Not stated	80	...	30	...	140	...	130	...	550	...	380	...
Age-adjusted rate ³	633.4	...	641.4	...	642.4	...	658.1	...	607.9	...	614.1
White female												
All ages.	88,300	934.3	89,950	955.5	270,800	976.5	268,700	983.6	988,090	887.6	972,860	879.9
Under 1 year.	} 1,230	65.1	1,150	60.9	2,120	² 582.4	2,190	² 606.2	8,360	² 570.6	8,920	² 598.3
1–4 years					500	33.5	460	30.6	1,880	31.2	1,850	30.2
5–14 years					620	16.8	570	15.8	2,450	16.6	2,520	17.3
15–24 years					510	43.2	430	36.2	1,480	43.0	1,330	38.6
25–34 years	930	67.1	880	62.4	2,730	67.1	2,790	68.1	10,470	63.7	10,900	65.3
35–44 years	1,830	121.0	1,640	110.0	5,890	132.8	5,270	121.7	22,410	126.3	21,220	121.8
45–54 years	3,240	276.9	3,070	271.5	9,890	288.2	10,100	309.0	39,380	289.2	38,640	294.8
55–64 years	6,650	824.6	6,190	769.2	20,140	851.2	19,450	832.8	75,330	793.2	74,580	788.1
65–74 years	15,890	2,052.3	15,690	2,008.4	47,890	2,104.8	47,620	2,099.1	175,560	1,912.4	177,140	1,921.0
75–84 years	26,400	4,997.4	27,630	5,301.0	81,770	5,278.0	81,660	5,400.5	297,220	4,790.8	295,800	4,812.1
85 years and over.	31,620	15,407.3	33,260	16,565.5	97,730	16,240.9	97,190	16,692.2	348,640	14,484.4	335,050	14,548.4
Not stated	—	...	20	...	30	...	90	...	200	...	190	...
Age-adjusted rate ³	378.4	...	375.1	...	391.7	...	393.5	...	362.9	...	364.1
Black												
All ages.	24,970	881.2	25,420	907.1	76,040	915.2	77,020	947.7	286,070	859.6	283,340	863.4
Under 1 year.	} 970	126.5	1,280	167.9	2,300	² 1,469.9	2,570	² 1,674.4	8,670	² 1,385.0	9,800	² 1,543.3
1–4 years					400	65.3	610	97.7	1,650	66.5	2,110	84.1
5–14 years					510	34.4	460	31.8	1,810	30.6	2,070	35.5
15–24 years					690	149.0	720	156.0	2,120	155.9	2,120	158.4
25–34 years	1,130	246.4	1,240	268.6	3,720	276.5	3,760	280.2	15,810	292.2	14,950	274.6
35–44 years	2,210	495.1	2,340	535.6	6,770	517.6	7,140	564.1	26,760	512.3	26,650	524.5
45–54 years	2,710	951.7	2,490	919.6	7,870	944.6	7,470	955.2	29,940	909.2	28,250	905.2
55–64 years	3,290	1,810.0	3,510	1,954.0	10,320	1,935.4	10,520	2,020.2	38,770	1,815.1	38,860	1,853.1
65–74 years	4,980	3,616.0	5,310	3,885.7	14,790	3,658.4	16,250	4,100.3	56,210	3,469.8	58,160	3,616.9
75–84 years	5,480	7,720.7	4,980	7,115.9	15,920	7,651.6	15,470	7,628.4	57,870	6,947.2	55,780	6,712.4
85 years and over.	3,460	14,641.7	3,500	15,150.6	11,230	16,148.8	10,570	15,745.1	39,740	14,243.7	37,380	14,952.0
Not stated	60	...	50	...	100	...	70	...	230	...	220	...
Age-adjusted rate ³	771.9	...	803.2	...	798.8	...	839.1	...	758.6	...	771.4
Black male												
All ages.	13,760	1,023.4	13,830	1,040.6	41,340	1,048.2	41,300	1,071.5	154,200	976.8	153,360	984.8
Under 1 year.	} 550	141.4	740	191.4	1,250	² 1,584.6	1,330	² 1,701.2	4,680	² 1,471.7	5,440	² 1,689.4
1–4 years					200	64.4	290	93.1	840	66.7	1,110	87.3
5–14 years					310	41.2	290	39.5	1,160	38.7	1,270	43.0
15–24 years					560	241.6	580	251.5	1,760	260.1	1,730	260.2
25–34 years	770	354.7	900	412.3	2,540	397.2	2,660	419.2	10,890	425.6	10,620	412.1
35–44 years	1,420	681.2	1,580	775.1	4,450	728.8	4,750	802.7	17,730	727.2	17,730	747.2
45–54 years	1,740	1,348.0	1,560	1,271.1	5,040	1,332.0	4,620	1,300.8	18,780	1,257.9	17,460	1,233.9
55–64 years	1,950	2,467.6	1,980	2,536.8	6,110	2,635.8	5,960	2,633.9	22,150	2,386.9	22,540	2,466.1
65–74 years	2,960	5,154.4	2,850	5,015.9	8,240	4,888.1	8,690	5,270.9	30,710	4,549.6	31,080	4,659.7
75–84 years	2,660	10,229.7	2,400	9,450.9	7,710	10,112.2	7,310	9,926.0	26,720	8,818.5	25,860	8,620.0
85 years and over.	1,100	16,233.9	1,210	18,033.9	3,670	18,291.3	3,640	18,686.4	13,520	16,691.4	12,810	17,547.9
Not stated	60	...	30	...	60	...	30	...	130	...	140	...
Age-adjusted rate ³	1,057.8	...	1,074.0	...	1,079.5	...	1,109.4	...	1,008.4	...	1,025.5

See footnotes at end of table.

Table 5. Provisional number of deaths and death rates, by age, race, and sex, and age-adjusted death rates by race and sex: United States, March 1995 and 1996, cumulative figures 1995 and 1996, and 12 months ending with March 1995 and 1996—Con.

[Data are provisional, estimated from a 10-percent sample of deaths. Age-specific rates on an annual basis per 100,000 population in specified group; age-adjusted rates per 100,000 U.S. standard million population; see [Technical notes](#). Because of rounding of estimates, figures may not add to totals. For method of computation and information on standard errors of the estimates, see [Technical notes](#)]

Age, race, and sex	March				January–March				12 months ending with March			
	1996		1995		1996		1995		1996		1995	
	Number	Rate	Number	Rate	Number	Rate	Number	Rate	Number	Rate	Number	Rate
Black female												
All ages.	11,200	752.1	11,590	786.7	34,710	794.8	35,710	836.0	131,870	753.8	129,980	753.9
Under 1 year.	} 420	111.1	540	143.8	1,050	² 1,352.3	1,240	² 1,647.1	3,990	² 1,295.5	4,350	² 1,389.8
1–4 years					200	66.2	320	105.8	810	66.2	1,000	80.8
5–14 years					200	27.4	180	25.3	650	22.3	800	27.9
15–24 years					130	56.2	140	60.6	350	51.5	390	58.2
25–34 years	350	144.9	350	143.8	1,180	166.6	1,100	155.5	4,920	172.6	4,330	151.0
35–44 years	790	332.0	760	326.1	2,320	332.6	2,390	355.5	9,030	324.1	8,920	329.4
45–54 years	960	616.7	930	628.2	2,830	621.2	2,850	666.5	11,160	620.0	10,800	633.1
55–64 years	1,340	1,304.2	1,530	1,506.2	4,210	1,396.7	4,560	1,548.5	16,620	1,375.8	16,320	1,379.5
65–74 years	2,020	2,515.7	2,460	3,081.3	6,550	2,778.9	7,570	3,267.3	25,500	2,698.4	27,080	2,877.8
75–84 years	2,820	6,270.1	2,580	5,786.2	8,220	6,222.1	8,160	6,311.7	31,150	5,877.4	29,920	5,634.7
85 years and over.	2,360	14,001.6	2,290	13,970.4	7,560	15,279.5	6,920	14,541.2	26,220	13,242.4	24,570	13,881.4
Not stated	–	...	20	...	40	...	40	...	100	...	80	...
Age-adjusted rate ³	551.8	...	595.3	...	582.3	...	632.3	...	565.1	...	574.4

... Category not applicable.

– Quantity zero.

¹Includes races other than white and black.

²Death rates (based on population estimates) differ from infant mortality rates (based on live births); for “Under 1 year” see [table 9](#) for infant mortality rates.

³For method of computation, see [Technical notes](#).

NOTES: Figures include all revisions received from the States. Cumulative and 12-month figures for the current year reflect revisions received for previous months, and figures for earlier years may differ from those previously published. Data include adjustments for New Jersey, which is not included in the sample for March 1996.

Table 6. Provisional number of deaths and death rates for 72 selected causes, Human immunodeficiency virus infection, and Alzheimer's disease: United States, March 1995 and 1996, cumulative figures 1995 and 1996, and 12 months ending with March 1995 and 1996

[Data are provisional, estimated from a 10-percent sample of deaths. Rates on an annual basis per 100,000 estimated population. Because of rounding of estimates, figures may not add to totals. For method of computation and information on standard errors of the estimates, see [Technical notes](#). For explanation of asterisks preceding cause-of-death categories, see [Technical notes](#)]

Cause of death (Based on the Ninth Revision, International Classification of Diseases, 1975)	March		January–March		12 months ending with March							
	1996		1995		1996		1995		1996		1995	
	Number	Rate	Number	Rate	Number	Rate	Number	Rate	Number	Rate	Number	Rate
All causes	206,000	921.2	208,000	935.8	625,000	951.8	622,000	963.4	2,312,000	877.6	2,280,000	872.2
Shigellosis and amebiasis	—	*	—	*	—	*	—	*	—	*	—	*
Certain other intestinal infections	130	0.6	60	*	310	0.5	160	0.2	790	0.3	670	0.3
Tuberculosis	100	*	180	0.8	320	0.5	490	0.8	1,200	0.5	1,560	0.6
Tuberculosis of respiratory system	70	*	140	0.6	270	0.4	380	0.6	960	0.4	1,170	0.4
Other tuberculosis	30	*	40	*	50	*	110	0.2	240	0.1	390	0.1
Whooping cough	10	*	—	*	10	*	—	*	20	*	—	*
Streptococcal sore throat, scarlatina, and erysipelas	—	*	10	*	—	*	10	*	—	*	10	*
Meningococcal infection	30	*	30	*	100	*	90	*	310	0.1	300	0.1
Septicemia	1,620	7.2	1,870	8.4	5,670	8.6	6,020	9.3	20,850	7.9	19,970	7.6
Acute poliomyelitis	—	*	—	*	—	*	—	*	—	*	—	*
Measles	—	*	—	*	—	*	—	*	—	*	10	*
Viral hepatitis	290	1.3	300	1.3	890	1.3	890	1.4	3,530	1.3	2,980	1.1
Syphilis	—	*	20	*	—	*	70	*	60	*	110	0.0
All other infectious and parasitic diseases ¹	3,710	16.6	4,500	20.2	11,160	17.0	12,780	19.8	47,390	18.0	47,920	18.3
Malignant neoplasms, including neoplasms of lymphatic and hematopoietic tissues	46,500	207.7	45,430	204.2	139,460	212.3	136,330	211.2	539,580	204.8	538,360	205.9
Malignant neoplasms of lip, oral cavity, and pharynx	700	3.1	770	3.4	2,010	3.1	2,260	3.5	7,730	2.9	8,020	3.1
Malignant neoplasms of digestive organs and peritoneum	10,660	47.6	10,690	48.0	32,340	49.2	31,490	48.8	126,100	47.9	126,610	48.4
Malignant neoplasms of respiratory and intrathoracic organs	13,880	62.0	13,040	58.6	41,210	62.7	39,510	61.2	156,640	59.5	154,710	59.2
Malignant neoplasm of breast	3,640	16.2	3,680	16.5	11,200	17.0	11,440	17.7	43,780	16.6	44,480	17.0
Malignant neoplasms of genital organs	5,220	23.3	5,190	23.3	15,110	23.0	15,570	24.1	60,340	22.9	61,900	23.7
Malignant neoplasms of urinary organs	1,970	8.8	2,090	9.4	5,970	9.1	6,020	9.3	23,040	8.7	22,040	8.4
Malignant neoplasms of all other and unspecified sites	5,750	25.7	5,350	24.0	17,040	26.0	16,240	25.2	66,400	25.2	66,640	25.5
Leukemia	1,720	7.7	1,670	7.5	5,470	8.3	4,790	7.4	20,300	7.7	19,410	7.4
Other malignant neoplasms of lymphatic and hematopoietic tissues	2,960	13.2	2,950	13.3	9,110	13.8	9,000	14.0	35,260	13.4	34,550	13.2
Benign neoplasms, carcinoma in situ, and neoplasms of uncertain behavior and of unspecified nature	650	2.9	900	4.0	2,040	3.1	2,510	3.9	7,920	3.0	8,180	3.1
Diabetes mellitus	5,530	24.7	5,130	23.1	16,110	24.5	15,810	24.5	58,640	22.3	55,900	21.4
Nutritional deficiencies	370	1.6	330	1.5	1,160	1.8	960	1.5	4,030	1.5	3,250	1.2
Anemias	370	1.6	380	1.7	950	1.5	1,220	1.9	4,020	1.5	4,370	1.7
Meningitis	50	*	60	*	190	0.3	280	0.4	700	0.3	890	0.3
Major cardiovascular diseases	84,050	375.4	86,880	390.5	258,090	392.9	259,200	401.5	941,400	357.3	934,850	357.6
Diseases of heart	65,010	290.3	67,680	304.2	200,300	304.9	200,590	310.7	730,580	277.3	726,570	277.9
Rheumatic fever and rheumatic heart disease	630	2.8	590	2.6	1,450	2.2	1,550	2.4	4,930	1.9	5,630	2.2
Hypertensive heart disease	2,190	9.8	2,120	9.5	7,010	10.7	6,450	10.0	25,050	9.5	23,720	9.1
Hypertensive heart and renal disease	110	0.5	320	1.4	610	0.9	770	1.2	2,180	0.8	2,510	1.0
Ischemic heart disease	41,770	186.6	43,540	195.7	129,690	197.5	131,280	203.3	475,820	180.6	478,400	183.0
Acute myocardial infarction	18,520	82.7	19,960	89.7	58,670	89.3	60,450	93.6	215,410	81.8	222,260	85.0
Other acute and subacute forms of ischemic heart disease	220	1.0	190	0.8	670	1.0	750	1.2	2,520	1.0	2,640	1.0
Angina pectoris	60	*	60	*	210	0.3	220	0.3	720	0.3	860	0.3
Old myocardial infarction and other forms of chronic ischemic heart disease	22,970	102.6	23,340	104.9	70,130	106.8	69,850	108.2	257,170	97.6	252,630	96.6
Other diseases of endocardium	1,640	7.3	1,550	7.0	4,590	7.0	4,380	6.8	15,740	6.0	14,820	5.7
All other forms of heart disease	18,670	83.4	19,550	87.9	56,960	86.7	56,170	87.0	206,850	78.5	201,490	77.1
Hypertension with or without renal disease	1,080	4.8	1,120	5.0	3,350	5.1	3,360	5.2	12,470	4.7	10,820	4.1
Cerebrovascular diseases	14,200	63.4	14,310	64.3	43,270	65.9	43,460	67.3	156,560	59.4	154,630	59.2
Intracerebral and other intracranial hemorrhage	2,010	9.0	2,050	9.2	6,190	9.4	6,060	9.4	21,830	8.3	21,530	8.2
Cerebral thrombosis and unspecified occlusion of cerebral arteries	1,180	5.3	1,250	5.6	3,410	5.2	3,880	6.0	12,930	4.9	14,780	5.7
Cerebral embolism	60	*	20	*	140	0.2	130	0.2	660	0.3	780	0.3
All other and late effects of cerebrovascular diseases	10,950	48.9	10,990	49.4	33,530	51.0	33,390	51.7	121,150	46.0	117,550	45.0

See footnotes at end of table.

Table 6. Provisional number of deaths and death rates for 72 selected causes, Human immunodeficiency virus infection, and Alzheimer's disease: United States, March 1995 and 1996, cumulative figures 1995 and 1996, and 12 months ending with March 1995 and 1996—Con.

[Data are provisional, estimated from a 10-percent sample of deaths. Rates on an annual basis per 100,000 estimated population. Because of rounding of estimates, figures may not add to totals. For method of computation and information on standard errors of the estimates, see [Technical notes](#). For explanation of asterisks preceding cause-of-death categories, see [Technical notes](#)]

Cause of death (Based on the Ninth Revision, International Classification of Diseases, 1975)	March		January–March				12 months ending with March						
	1996		1995		1996		1995		1996		1995		
	Number	Rate	Number	Rate	Number	Rate	Number	Rate	Number	Rate	Number	Rate	
Cerebrovascular diseases—Con.													
Atherosclerosis	440	1,270	440	5.7	4,200	6.4	4,680	7.2	15,910	6.0	16,790	6.4	
Other diseases of arteries, arterioles, and capillaries441–448	2,480	2,290	11.1	6,960	10.6	7,110	11.0	25,870	9.8	26,040	10.0	
Acute bronchitis and bronchiolitis466	60	100	*	170	0.2	220	0.3	500	0.2	450	0.2	
Pneumonia and influenza480–487	8,070	9,010	36.0	40.5	25,810	39.3	26,230	40.6	79,750	30.3	78,220	29.9
Pneumonia480–486	7,980	8,840	35.6	39.7	25,390	38.6	25,890	40.1	79,190	30.1	77,790	29.8
Influenza487	90	170	*	8	0.6	340	0.5	560	0.2	430	0.2	
Chronic obstructive pulmonary diseases and allied conditions490–496	10,480	10,600	46.8	47.6	30,920	47.1	31,540	48.9	102,930	39.1	101,070	38.7
Bronchitis, chronic and unspecified490–491	350	380	1.6	1.7	1,160	1.8	970	1.5	3,170	1.2	3,330	1.3
Emphysema492	1,720	1,930	7.7	8.7	5,080	7.7	5,710	8.8	16,780	6.4	17,860	6.8
Asthma493	550	490	2.5	2.2	1,280	1.9	1,690	2.6	5,100	1.9	5,180	2.0
Other chronic obstructive pulmonary diseases and allied conditions494–496	7,860	7,800	35.1	35.1	23,400	35.6	23,170	35.9	77,870	29.6	74,700	28.6
Ulcer of stomach and duodenum531–533	460	480	2.1	2.2	1,430	2.2	1,480	2.3	5,840	2.2	5,920	2.3
Appendicitis540–543	80	20	*	*	140	0.2	90	*	450	0.2	340	0.1
Hernia of abdominal cavity and intestinal obstruction without mention of hernia550–553,560	550	560	2.5	2.5	1,730	2.6	1,650	2.5	6,050	2.3	5,990	2.3
Chronic liver disease and cirrhosis571	2,540	2,250	11.3	10.1	6,720	10.2	6,800	10.5	25,010	9.5	25,960	9.9
Cholelithiasis and other disorders of gallbladder574–575	220	220	1.0	1.0	680	1.0	720	1.1	2,660	1.0	2,660	1.0
Nephritis and nephrotic syndrome, and nephrosis580–589	2,500	2,330	11.2	10.5	7,420	11.3	7,090	11.0	25,960	9.9	25,060	9.6
Acute glomerulonephritis and nephrotic syndrome580–581	30	10	*	*	60	*	50	*	290	0.1	210	0.1
Chronic glomerulonephritis, nephritis and nephropathy, not specified as acute or chronic, and renal sclerosis, unspecified582–583,587	160	60	0.7	*	500	0.8	380	0.6	1,460	0.6	1,610	0.6
Renal failure, disorders resulting from impaired renal function, and small kidney of unknown cause584–586,588–589	2,310	2,260	10.3	10.1	6,860	10.4	6,660	10.3	24,210	9.2	23,230	8.9
Infections of kidney590	90	30	*	*	260	0.4	180	0.3	810	0.3	870	0.3
Hyperplasia of prostate600	30	70	*	*	130	0.2	120	0.2	440	0.2	410	0.2
Complications of pregnancy, childbirth, and the puerperium630–676	30	10	*	*	60	*	80	*	300	0.1	350	0.1
Pregnancy with abortive outcome630–638	10	—	*	*	10	*	—	*	30	*	30	*
Other complications of pregnancy, childbirth, and the puerperium640–676	20	10	*	*	50	*	80	*	270	0.1	320	0.1
Congenital anomalies740–759	1,030	810	4.6	3.6	2,830	4.3	2,760	4.3	11,620	4.4	11,380	4.4
Certain conditions originating in the perinatal period760–779	1,120	1,180	5.0	5.3	3,160	4.8	3,420	5.3	13,150	5.0	14,070	5.4
Birth trauma, intrauterine hypoxia, birth asphyxia, and respiratory distress syndrome767–769	250	150	1.1	0.7	540	0.8	470	0.7	2,050	0.8	2,150	0.8
Other conditions originating in the perinatal period760–766,770–779	870	1,030	3.9	4.6	2,620	4.0	2,950	4.6	11,100	4.2	11,920	4.6
Symptoms, signs, and ill-defined conditions780–799	3,420	3,640	15.3	16.4	11,250	17.1	11,000	17.0	42,470	16.1	40,560	15.5
All other diseasesResidual	19,640	19,140	87.7	86.0	60,280	91.8	57,100	88.5	216,630	82.2	203,040	77.7
Accidents and adverse effectsE800–E949	7,730	7,020	34.5	31.5	22,280	33.9	20,840	32.3	91,240	34.6	88,510	33.9
Motor vehicle accidentsE810–E825	3,850	3,250	17.2	14.6	10,510	16.0	9,640	14.9	44,640	16.9	42,740	16.4
All other accidents and adverse effectsE800–E807,E826–E949	3,880	3,770	17.3	16.9	11,780	17.9	11,200	17.3	46,600	17.7	45,770	17.5
SuicideE950–E959	2,530	2,750	11.3	12.4	7,020	10.7	7,460	11.6	29,400	11.2	30,640	11.7
Homicide and legal interventionE960–E978	2,020	1,770	9.0	7.9	5,770	8.8	5,640	8.7	22,510	8.5	23,240	8.9
All other external causesE980–E999	230	120	1.0	0.5	620	0.9	580	0.9	2,320	0.9	2,520	1.0
Human immunodeficiency virus infection ²	*042–*044	3,260	3,790	14.6	17.0	9,740	14.8	10,950	17.0	41,150	15.6	41,440	15.9
Alzheimer's disease331.0	1,960	1,860	8.7	8.4	6,210	9.5	5,680	8.8	21,000	8.0	19,010	7.3

— Quantity zero. * Figure does not meet standards of reliability or precision; see [Technical notes](#). 0.0 Quantity more than zero but less than 0.05.

¹Includes data for deaths due to Human immunodeficiency virus infection (categories *042–*044) shown separately below; see [Technical notes](#).

²Included in All other infectious and parasitic diseases shown above.

NOTES: Figures include all revisions received from the States. Cumulative and 12-month figures for the current year reflect revisions received for previous months, and figures for earlier years may differ from those previously published. Data include adjustments for New Jersey, which is not included in the sample for March 1996.

Table 7. Provisional number of deaths and death rates for 16 selected subcategories of Malignant neoplasms, including neoplasms of lymphatic and hematopoietic tissues: United States, March 1995 and 1996, cumulative figures 1995 and 1996, and 12 months ending with March 1995 and 1996

[Data are provisional, estimated from a 10-percent sample of deaths. Rates on an annual basis per 100,000 estimated population. Because of rounding of estimates, figures may not add to totals. For method of computation and information on standard errors of the estimates, see [Technical notes](#)]

Cause of death (Based on the Ninth Revision, International Classification of Diseases, 1975)	March				January–March				12 months ending with March			
	1996		1995		1996		1995		1996		1995	
	Number	Rate	Number	Rate	Number	Rate	Number	Rate	Number	Rate	Number	Rate
Malignant neoplasms, including neoplasms of lymphatic and hematopoietic tissues ¹140–208	46,500	207.7	45,430	204.2	139,460	212.3	136,330	211.2	539,580	204.8	538,360	205.9
Malignant neoplasm of esophagus150	890	4.0	1,020	4.6	2,840	4.3	2,820	4.4	10,380	3.9	11,140	4.3
Malignant neoplasm of stomach151	1,020	4.5	1,160	5.2	3,240	4.9	3,430	5.3	13,620	5.2	13,780	5.3
Malignant neoplasms of colon, rectum, rectosigmoid junction, and anus153,154	5,000	22.3	4,900	22.0	14,830	22.6	14,360	22.3	56,290	21.4	58,140	22.2
Malignant neoplasm of pancreas157	2,480	11.1	2,200	9.9	6,860	10.4	6,660	10.3	27,570	10.5	26,590	10.2
Malignant neoplasms of trachea, bronchus, and lung162	13,410	59.9	12,550	56.4	39,840	60.6	37,980	58.8	151,510	57.5	149,190	57.1
Malignant melanoma of skin172	500	2.2	610	2.7	1,370	2.1	1,720	2.7	6,670	2.5	7,200	2.8
Malignant neoplasm of cervix uteri180	470	2.1	360	1.6	1,100	1.7	890	1.4	4,980	1.9	4,370	1.7
Malignant neoplasms of body of uterus and of uterus, part unspecified179,182	590	2.6	490	2.2	1,450	2.2	1,490	2.3	6,070	2.3	5,950	2.3
Malignant neoplasm of ovary183.0	1,040	4.6	1,260	5.7	3,400	5.2	3,590	5.5	13,400	5.1	14,050	5.4
Malignant neoplasm of prostate185	2,990	13.4	2,940	13.2	8,690	13.2	9,150	14.2	34,080	12.9	35,650	13.6
Malignant neoplasm of bladder188	990	4.4	1,020	4.6	3,040	4.6	3,120	4.8	11,460	4.3	10,860	4.2
Malignant neoplasms of kidney and other and unspecified urinary organs189	970	4.3	1,070	4.8	2,930	4.4	2,900	4.5	11,580	4.4	11,180	4.3
Malignant neoplasms of brain and other and unspecified parts of nervous system191,192	1,140	5.1	930	4.2	3,200	4.9	2,830	4.4	11,910	4.5	12,050	4.6
Hodgkin's disease201	150	0.7	170	0.8	510	0.8	360	0.6	1,680	0.6	1,480	0.6
Malignant lymphoma other than Hodgkin's disease200,202	1,820	8.1	1,830	8.2	5,850	8.9	5,920	9.1	23,190	8.8	22,800	8.7
Multiple myeloma and other immunoproliferative neoplasms203	990	4.4	950	4.3	2,750	4.2	2,730	4.2	10,380	3.9	10,260	3.9

¹Includes figures for subcategories not shown.

NOTES: Figures include all revisions received from the States. Cumulative and 12-month figures for the current year reflect revisions received for previous months, and figures for earlier years may differ from those previously published. Data include adjustments for New Jersey, which is not included in the sample for March 1996.

Table 8. Provisional number of deaths and death rates for firearm mortality: United States, March 1995 and 1996, cumulative figures 1995 and 1996, and 12 months ending with March 1995 and 1996

[Data are provisional, estimated from a 10-percent sample of deaths. Rates on an annual basis per 100,000 estimated population. Because of rounding of estimates, figures may not add to totals. For method of computation and information on standard errors of the estimates, see [Technical notes](#)]

Cause of death (Based on the Ninth Revision, International Classification of Diseases, 1975)	March				January–March				12 months ending with March			
	1996		1995		1996		1995		1996		1995	
	Number	Rate	Number	Rate	Number	Rate	Number	Rate	Number	Rate	Number	Rate
Injury by firearms.E922,E955.0–E955.4,E965.0–965.4,E970,E985.0–E985.4	3,310	14.8	3,220	14.5	9,130	13.9	9,130	14.1	35,550	13.5	38,010	14.5
Accident caused by firearm missileE922	130	0.6	90	*	360	0.5	390	0.6	1,340	0.5	1,640	0.6
Suicide by firearmsE955.0–E955.4	1,630	7.3	1,840	8.3	4,540	6.9	4,680	7.2	17,840	6.8	19,260	7.4
Homicide and legal intervention by firearms.E965.0–E965.4,E970	1,500	6.7	1,270	5.7	4,170	6.3	3,980	6.1	16,150	6.1	16,770	6.4
Injury by firearms, undetermined whether accidentally or purposely inflicted. . . .E985.0–E985.4	40	*	20	*	60	*	90	*	220	0.1	340	0.1

* Figure does not meet standards of reliability or precision; see [Technical notes](#).

NOTES: Figures include all revisions received from the States. Cumulative and 12-month figures for the current year reflect revisions received for previous months, and figures for earlier years may differ from those previously published. Data include adjustments for New Jersey, which is not included in the sample for March 1996.

Table 9. Provisional number of deaths under 1 year and infant mortality rates, by age and for 10 selected causes: United States, March 1995 and 1996, cumulative figures 1995 and 1996, and 12 months ending with March 1995 and 1996

[Data are provisional, estimated from a 10-percent sample of deaths. Rates on an annual basis per 100,000 live births. Because of rounding of estimates, figures may not add to totals. For method of computation and information on standard errors of the estimates, see [Technical notes](#)]

Age and cause of death (Based on the Ninth Revision, International Classification of Diseases, 1975)	March				January–March				12 months ending with March			
	1996		1995		1996		1995		1996		1995	
	Number	Rate	Number	Rate	Number	Rate	Number	Rate	Number	Rate	Number	Rate
Total, under 1 year	2,500	758.8	2,700	801.8	7,200	750.4	7,800	800.1	28,700	743.5	31,000	786.5
Under 28 days	1,570	478.7	1,580	473.4	4,370	458.0	4,800	494.6	18,240	472.7	19,600	496.8
28 days–11 months	910	277.4	1,100	329.6	2,790	292.4	2,970	306.0	10,410	269.8	11,410	289.2
Certain gastrointestinal diseases.008–009,535,555–558	30	*	–	*	50	*	40	*	200	5.2	230	5.8
Pneumonia and influenza.480–487	30	*	40	*	110	11.5	110	11.3	350	9.1	370	9.4
Congenital anomalies740–759	580	176.8	480	143.8	1,540	161.4	1,590	163.8	6,120	158.6	6,690	169.6
Disorders relating to short gestation and unspecified low birthweight765	320	97.6	330	98.9	830	87.0	1,010	104.1	3,380	87.6	3,980	100.9
Birth trauma767	40	*	20	*	80	*	30	*	240	6.2	180	4.6
Intrauterine hypoxia and birth asphyxia768	30	*	40	*	140	14.7	120	12.4	480	12.4	520	13.2
Respiratory distress syndrome.769	160	48.8	100	*	300	31.4	290	29.9	1,240	32.1	1,390	35.2
Other conditions originating in the perinatal period.760–764,766,770–779	540	164.6	690	206.7	1,760	184.5	1,890	194.8	7,610	197.2	7,790	197.4
Sudden infant death syndrome798.0	290	88.4	320	95.9	810	84.9	850	87.6	2,870	74.4	3,420	86.7
All other causesResidual	470	143.3	670	200.7	1,550	162.5	1,830	188.6	6,160	159.6	6,460	163.7

* Figure does not meet standards of reliability or precision; see [Technical notes](#).

– Quantity zero.

NOTES: Figures include all revisions received from the States. Cumulative and 12-month figures for the current year reflect revisions received for previous months, and figures for earlier years may differ from those previously published.

Technical notes

Nature and sources of data

Data in this report are provisional unless otherwise specified and include only events occurring within the United States (50 States and the District of Columbia). Mortality data exclude fetal deaths. Data for the Commonwealth of Puerto Rico are not included in the U.S. totals.

Birth, death, and infant death figures in [tables 2](#) and [4](#) for each State are estimates by State of residence. These estimates are derived by applying adjustment ratios to the actual counts of certificates for all events occurring in the State and received in registration offices during a 1-month period regardless of date of the event. The adjustment ratios for each data year represent the observed relationship between final State occurrence and residence figures for the three most recent years for which final data were available and are expressed as a single ratio for each State. As in previous years, monthly State marriage and divorce figures represent the actual count of all events occurring in the State (State of occurrence) that were received in the registration offices during the 1-month period. Delay in the receipt of certificates in a registration office may result in a low State figure for a given month followed by a high figure for the month(s) in which the delayed records are received. Data for previous months and cumulative data include revised figures received from the States.

Figures for births, deaths, and infant deaths for California in [tables 2](#) and [4](#) contain adjustments for varying lengths of State reporting periods. Figures for Texas for all events shown in [tables 2–4](#) also are adjusted for varying lengths of State reporting periods. The figures for both States are adjusted by the ratio between the number of days in the data month and the number of days in the State reporting period. The adjusted figures are included in the U.S. totals shown elsewhere in this report.

U.S. totals for births, deaths, and infant deaths are based on the State estimates by State of residence and, therefore, in effect, exclude events to nonresidents of the United States. Events to nonresidents of the United States are included in all

marriage and divorce figures. The effect of excluding events to nonresidents from the U.S. totals is small.

Provisional totals for the United States include estimates for State data shown as not available. Provisional totals for births and marriages for the entire United States include adjustments for observed differences between provisional and final monthly figures.

Divorce figures include reported annulments. The monthly national divorce estimate is obtained by multiplying the total for the reporting areas by the ratio observed between the most recent final annual divorce total for the United States and the provisional total for the reporting areas combined.

Random variation—Although the counts in this report are not subject to sampling variability (except the Current Mortality Sample), they may be affected by random variation. When the number of events is small and the probability of such an event is small, considerable caution must be observed in interpreting the data. Such infrequent events may be assumed to follow a Poisson probability distribution. For this distribution a simple approximation may be used to estimate the random variation as follows:

If N is the number of events in the population and R is the corresponding rate, the chances are 19 in 20 that

$$1. N - 2\sqrt{N} \text{ and } N + 2\sqrt{N}$$

covers the “true” number of events.

$$2. R - 2 \frac{R}{\sqrt{N}} \text{ and } R + 2 \frac{R}{\sqrt{N}}$$

covers the “true” rate.

If the rate R_1 corresponding to N_1 events is compared with the rate R_2 corresponding to N_2 events, the difference between the two rates may be regarded as statistically significant at the 0.05 level if it exceeds

$$2 \sqrt{\frac{R_1^2}{N_1} + \frac{R_2^2}{N_2}}$$

Additional information on random variation in numbers of events, rates, and ratios may be found in the technical appendixes of *Vital Statistics of the United States, 1990, Volumes I and II*.

Rates

Rates are on an annual basis and, except for infant mortality rates, are per 1,000 or 100,000 estimated population residing in the United States. The populations used for computing these rates are furnished by the U.S. Bureau of the Census. Rates shown in this report beginning with 1992 were computed using populations based on the 1990 Census enumeration comparable to those used for final data. Monthly rates are based on populations estimated for the specific month. Year-to-date rates are averages of monthly rates that have been weighted by the number of days in the corresponding months. Rates for 12-month periods are the sum of events for the period per population estimated at the midpoint of the period.

Infant mortality rates are deaths under 1 year of age for the specified period (monthly, year-to-date, or 12-month period) per 1,000 or 100,000 live births. Births used for computing monthly and year-to-date infant mortality rates are adjusted for monthly variation in the number of births. Births used to compute 12-month rates do not contain this adjustment. Births used for computing infant mortality rates are not corrected for observed differences between provisional and final monthly figures as described earlier in “Nature and sources of data.” Because monthly infant mortality rates are based on relatively few events, they are highly variable. Therefore, comparisons of monthly infant mortality rates should be interpreted cautiously; see “[Random variation](#).”

Age-adjusted death rates are used to compare relative mortality risks across groups and over time. However, they should be viewed as constructs or indexes rather than as direct or actual measures of mortality risk. Statistically, they are weighted averages of the age-specific death rates, where the weights represent the fixed population proportions by age. See chapter 5 of an earlier report (1). The age-adjusted death rates presented in this report were computed by the direct method, that is, by applying age-specific death rates to the U.S. standard million population (2). See also chapter 10 of an earlier report (1). Age groups in [table 5](#) were used to compute the age-adjusted

rates shown in that table. It is important not to compare age-adjusted rates with crude rates.

Current Mortality Sample

The Current Mortality Sample (CMS) is a 10-percent systematic sample of death certificates drawn each month after the certificates are counted in the State registration offices. Deaths and death rates for the United States by age, race, sex, and cause are estimated based on the sample. Because of the additional time required to select and process the certificates, data based on the CMS are published 1 month after publication of the U.S. and State counts. Complete information concerning the underlying cause of death sometimes is not available when the sample is drawn. As a result estimates based on sample counts for certain causes are biased. Correction for bias is not made in this report.

Estimated numbers of deaths based on the sample were proportionately adjusted to be consistent with estimates based on the count of death certificates received in State registration offices.

HIV infection—Beginning with data for 1987, the National Center for Health Statistics introduced categories *042–*044 for classifying and coding Human immunodeficiency virus (HIV) infection. The asterisks before the categories indicate that these codes are not part of the

Ninth Revision, International Classification of Diseases. Deaths classified to these categories are included in All other infectious and parasitic diseases in the List of 72 Selected Causes of Death and are also shown separately at the bottom of table 6.

Sampling variability—Because the estimates of deaths and death rates presented in this report with the exception of total deaths and deaths under 1 year are based on a sample of death certificates, they are subject to sampling variability. The estimated relative standard error in the following table is a measure of the

Relative standard errors for estimated numbers of deaths from the Current Mortality Sample expressed as a percent of the estimate

Estimated number of deaths	Relative standard error of estimate (as percent)	
	170,000 estimated deaths each month	2,000,000 estimated deaths each year
10	94.9	94.9
20	67.1	67.1
50	42.4	42.4
100	30.0	30.0
200	21.2	21.2
500	13.4	13.4
1,000	9.5	9.5
2,000	6.7	6.7
5,000	4.2	4.2
10,000	2.9	3.0
20,000	2.0	2.1
50,000	1.1	1.3
100,000	0.6	0.9
200,000	0.6
500,000	0.4
1,000,000	0.2

sampling error of the estimated number of deaths (or of the estimated death rate) expressed as a percent of the estimate. The first column refers to monthly estimates; the second to annual; cumulative year-to-date totals fall between the two.

The chances are about 2 in 3 that the percent difference between an estimate and the result of a complete count is less than the percent shown. The chances are about 19 in 20 that the percent difference is less than twice the percent shown. A figure based on 100 or fewer estimated deaths has a relative standard error of 30 percent or more and is, therefore, considered unreliable. A rate based on 100 or fewer estimated deaths has been replaced by an asterisk.

Unless otherwise specified comparisons made in the text between death rates based on the CMS were statistically significant at the 0.05 level of significance. Lack of comment in the text about any two rates does not mean that the difference was tested and found not to be significant at this level.

References

1. Feinleib M, Zarate AO, eds. Reconsidering age adjustment procedures: Workshop proceedings. National Center for Health Statistics. Vital Health Stat 4(29). 1992.
2. Grove RD, Hetzel AM. Vital statistics rates in the United States, 1940–1960. Public Health Service. Washington: National Center for Health Statistics. 1968.

Suggested citation

National Center for Health Statistics. Births, marriages, divorces, and deaths for March 1996. Monthly vital statistics report; vol 45 no 4. Hyattsville, Maryland: Public Health Service. 1996.

Copyright information

All material appearing in this report is in the public domain and may be reproduced or copied without permission; citation as to source, however, is appreciated.

National Center for Health Statistics

Director
Edward J. Sondik, Ph.D.

Deputy Director
Jack R. Anderson

Division of Vital Statistics

Director
Mary Anne Freedman

**DEPARTMENT OF
HEALTH & HUMAN SERVICES**

Public Health Service
Centers for Disease Control and Prevention
National Center for Health Statistics
6525 Belcrest Road
Hyattsville, Maryland 20782

FIRST CLASS MAIL
POSTAGE & FEES PAID
PHS/NCHS
PERMIT NO. G-281

OFFICIAL BUSINESS
PENALTY FOR PRIVATE USE, \$300

To receive this publication regularly, contact the National Center for Health Statistics by calling 301-436-8500
E-mail: nchsquery@nch10a.em.cdc.gov
Internet: <http://www.cdc.gov/nchswwww/nchshome.htm>

DHHS Publication No. (PHS) 97-1120
7-0026 (11/96)