

Custom Menu for EIDSS

Quick Start Guide - DRAFT

Contents

- Deployment 3
 - Prerequisite..... 3
 - Download Zip File..... 3
 - Extract Zip File..... 3
 - Launch Application..... 4
 - Establish Database Connection..... 5
 - Test Functionality..... 6
- Usage..... 8
 - Launching Dashboards..... 8
 - Dashboard Settings 9
 - Maps 10
 - Map Settings 10
 - Videos..... 11
- Customization 12
 - Top Level UI..... 12
 - Analysis Panel..... 13
 - Map Panel 15
 - Video Panel 17

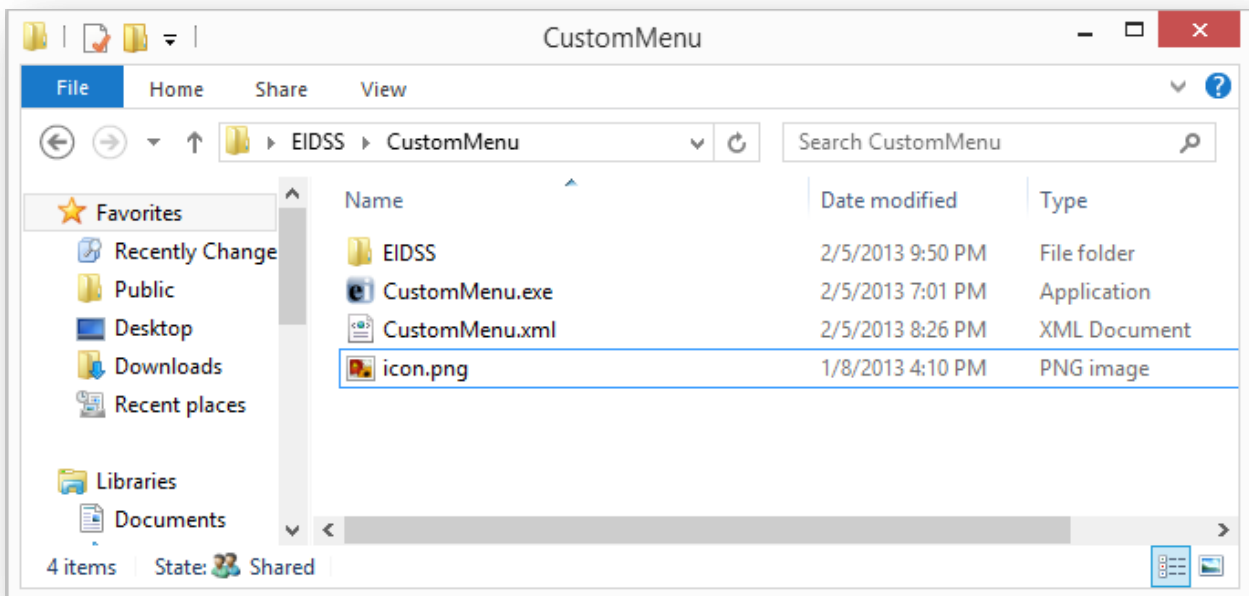
Deployment

Prerequisite

Ensure that Epi Info 7 (build 7.1.1.0 or above) is deployed to the local machine. The Custom Menu will work with both ZIP and Setup deployment types.

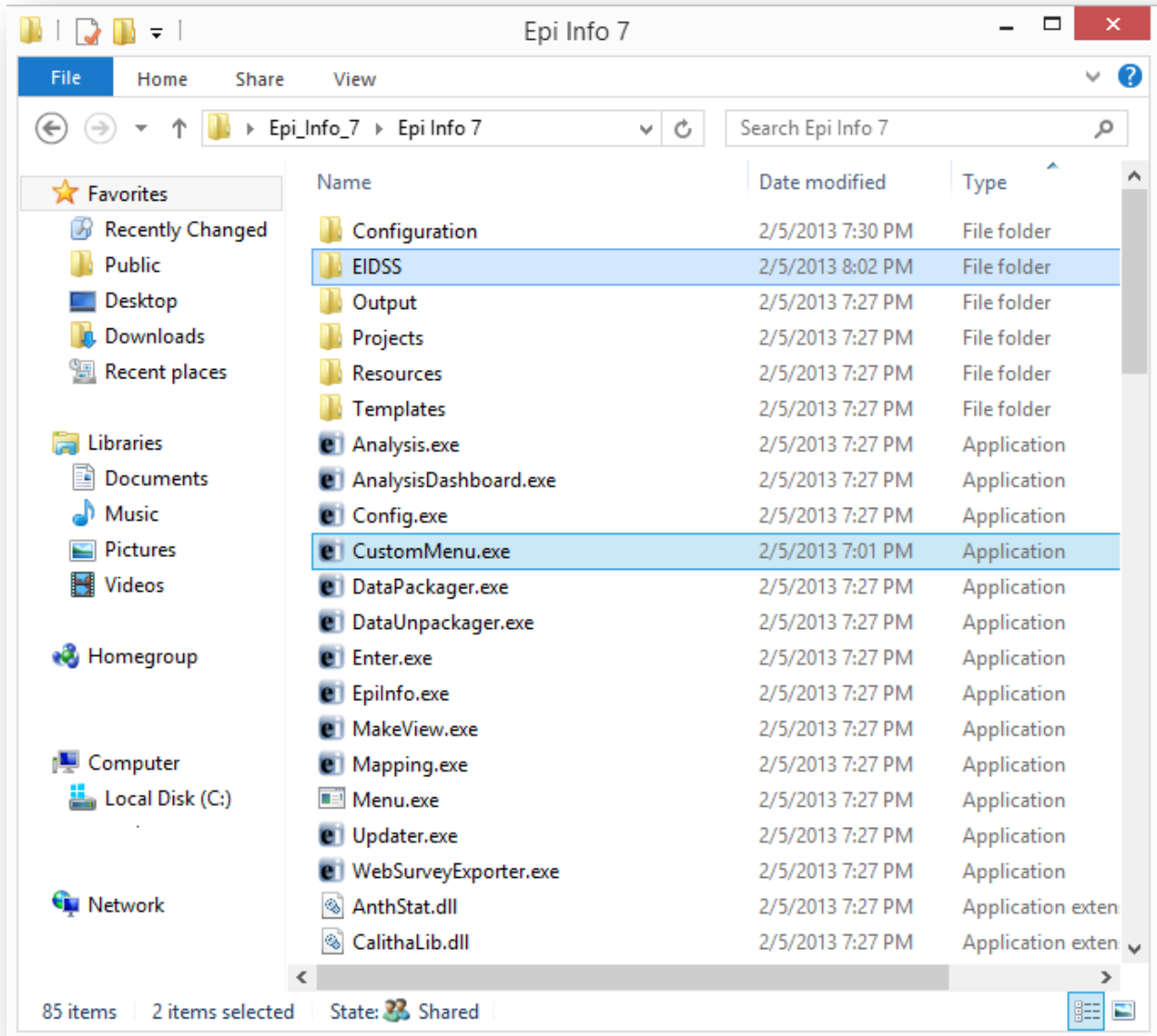
Download Zip File

Download CustomMenu.zip. Open the file to browse the contents.



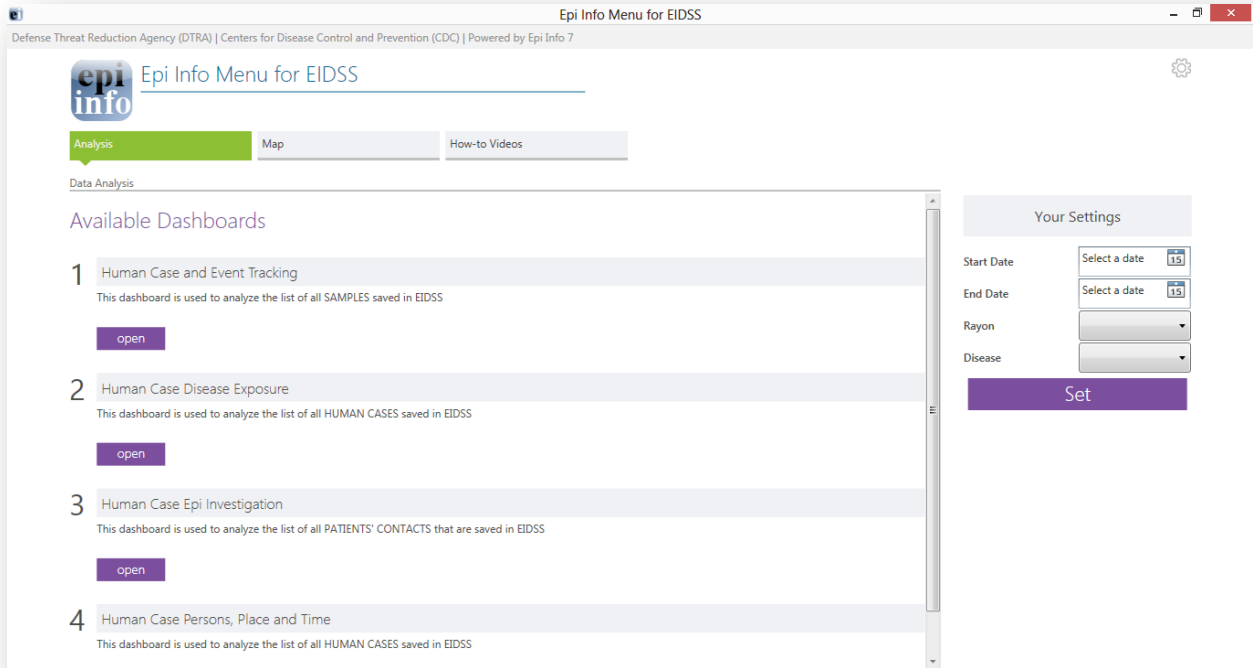
Extract Zip File

Extract the contents of the zip file to the local Epi Info 7 deployment folder such that CustomMenu.exe, CustomMenu.xml, and icon.png are on the same level as EpiInfo.exe and the EIDSS folder is on the same level as the Projects folder.

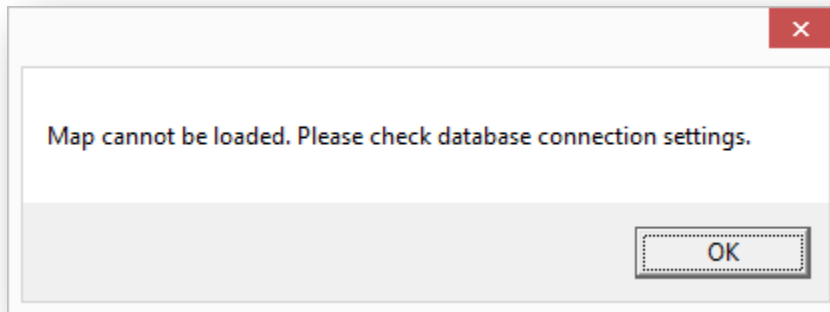


Launch Application

Double click on CustomMenu.exe to launch the customized EIDSS menu.

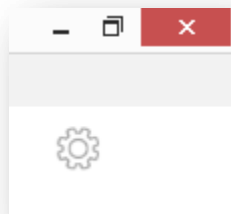


During the first execution the user is likely to encounter various error messages such as:

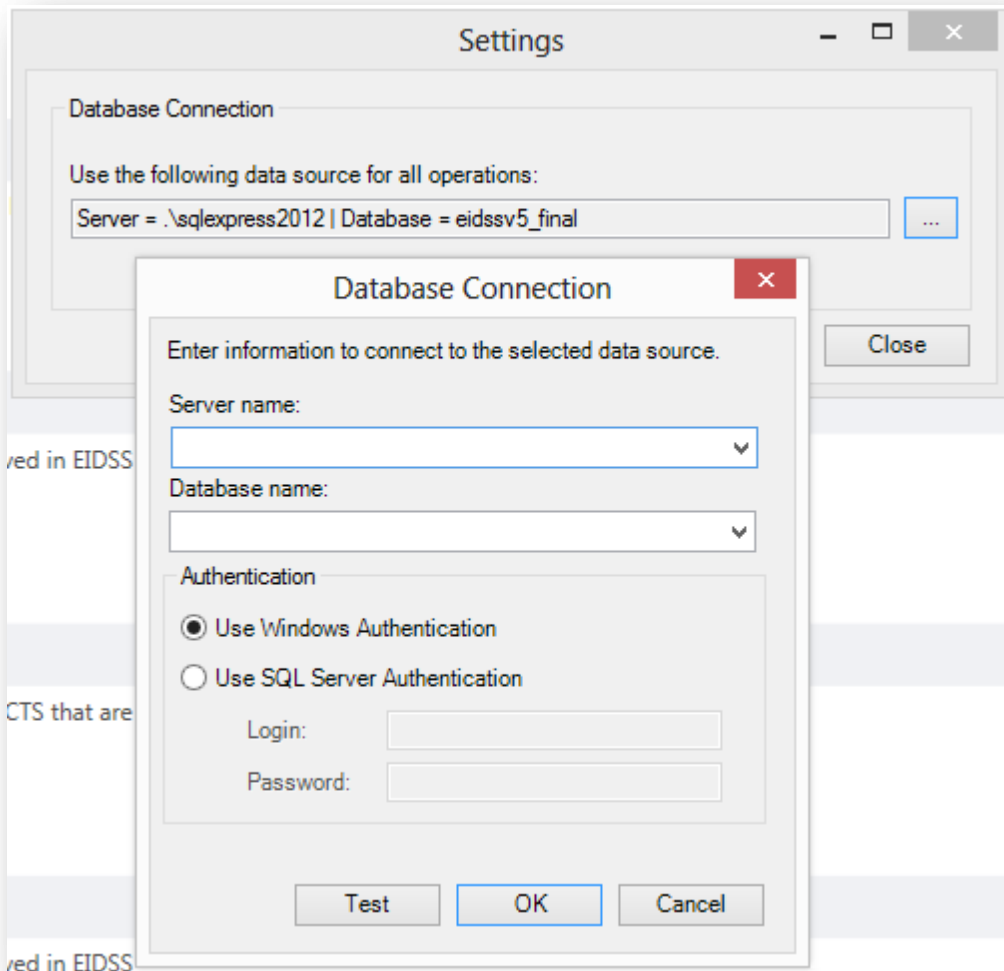


This is because the various features of the menu such as Dashboards, Maps, and Variable Settings cannot function without a valid database connection.

Establish Database Connection



Click on the configuration icon on the top right hand corner of the menu and provide valid database connection parameters.



Restart the menu application for the new database parameters to take effect.

Test Functionality

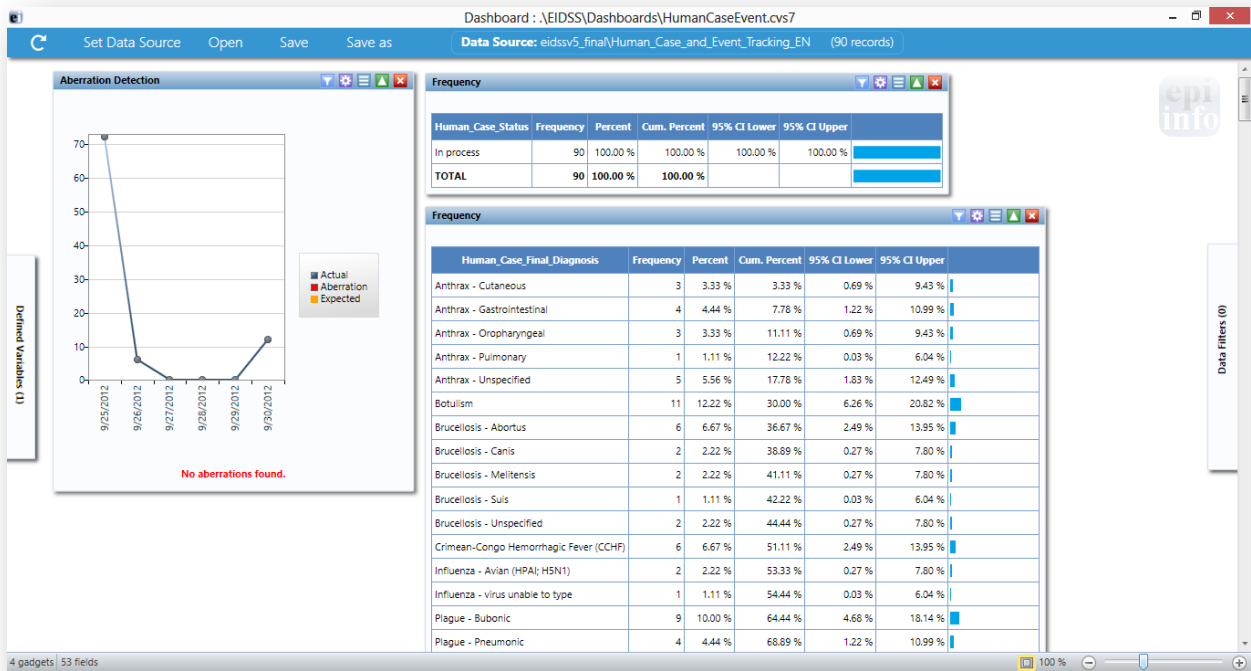
Click the open button for one of the Available Dashboards. If the Dashboard loads properly and displays results, the deployment has been successfully completed.

Available Dashboards

1 Human Case and Event Tracking

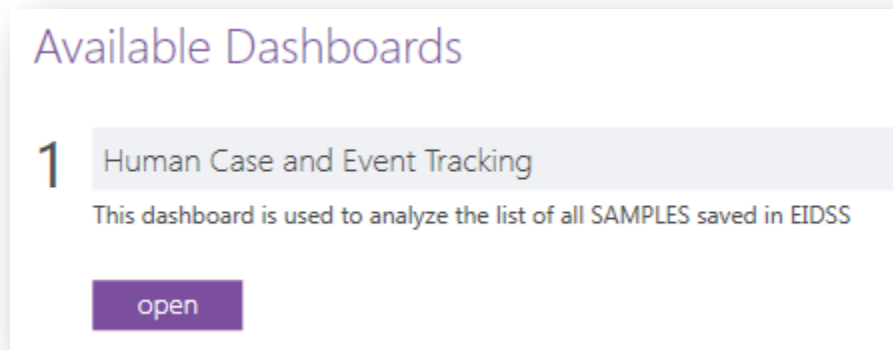
This dashboard is used to analyze the list of all SAMPLES saved in EIDSS

open



Usage

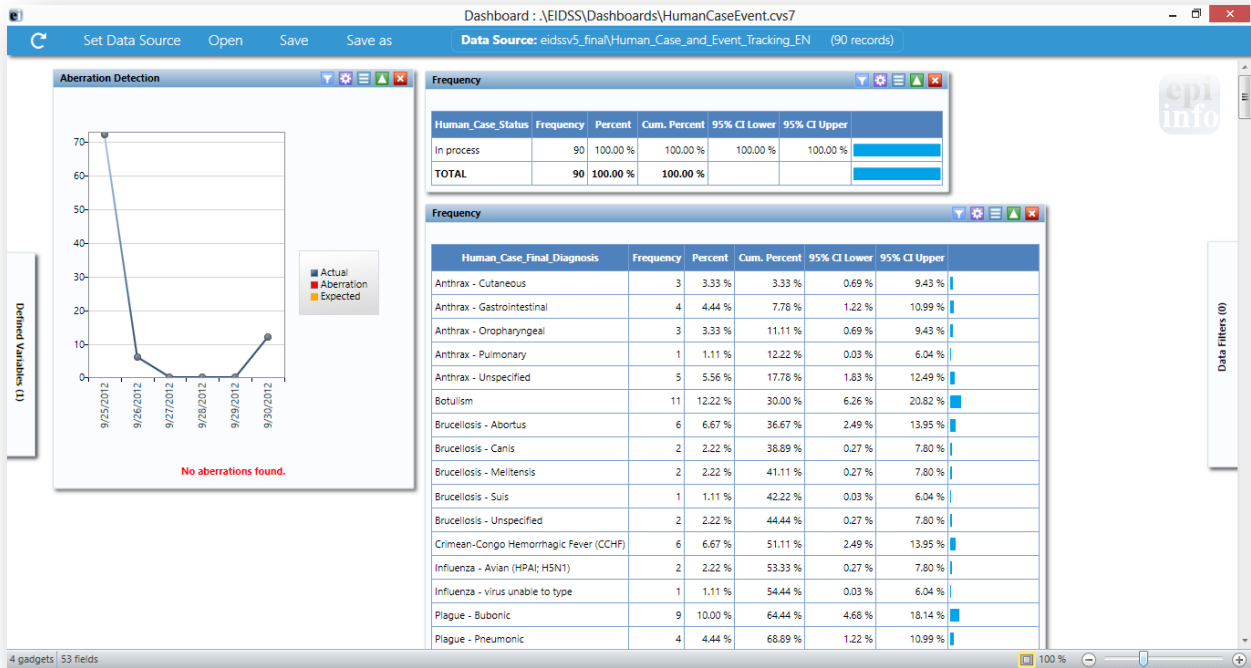
Launching Dashboards



The Custom Menu for EIDSS is preconfigured with four Dashboards that connect to the following Views respectively:

- Human_Case_And_Event_Tracking_EN
- Human_Case_Disease_Exposure_EN
- Human_Case_Epi_Investigation_EN
- Human_Case_Persons_Place_Time_EN

These Dashboards have some preconfigured analyses and line lists that can be further customized by the user.



Dashboard Settings

Users may use the Settings panel to limit the data used by the Dashboards.

Your Settings

Start Date

End Date

Rayon

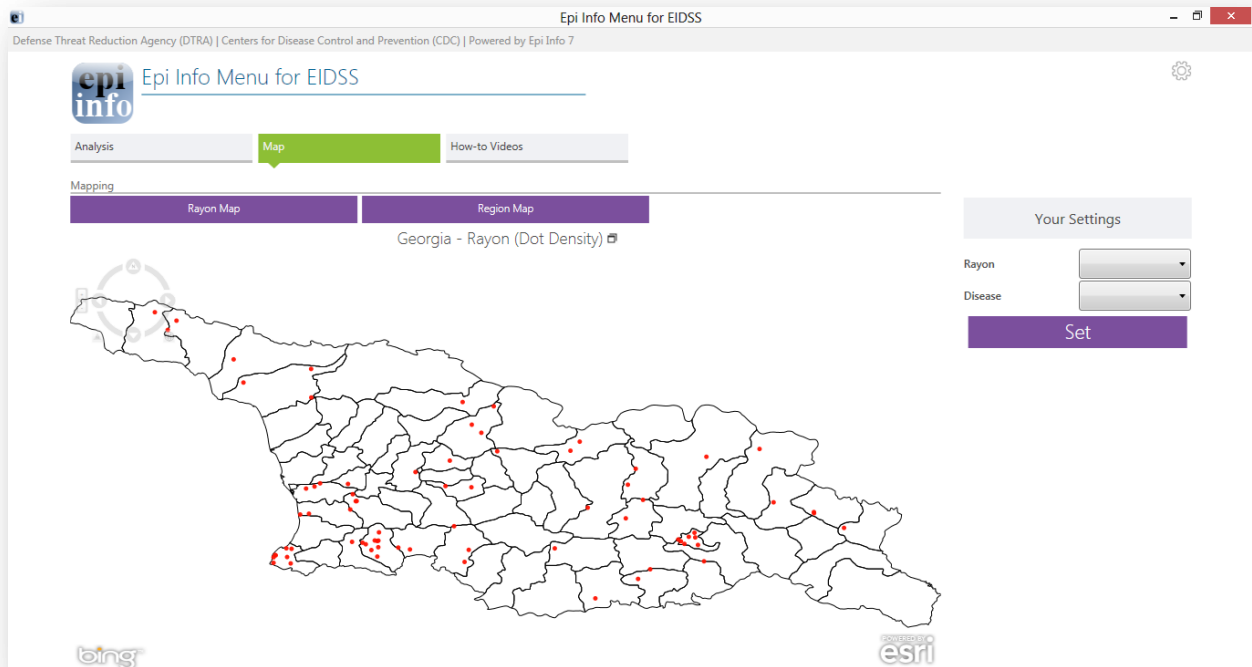
Disease

Use this feature to perform analyses based on date ranges or for select locations and diseases. The “Set” button must be pressed for the settings to take effect.

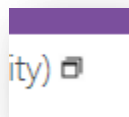
Maps

The Custom Menu for EIDSS is preconfigured with two dynamic maps of Georgia that load data from the Human_Case_Persons_Place_Time_EN view:

- Dot density map of records by Rayon
- Choropleth map of records by Region

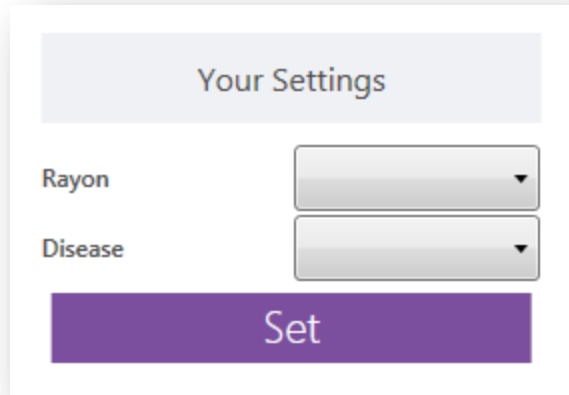


These maps can be further customized by users via the full Epi Info Map application. To load the current map using Epi Info Map, click the expand icon next to the map's title:



Map Settings

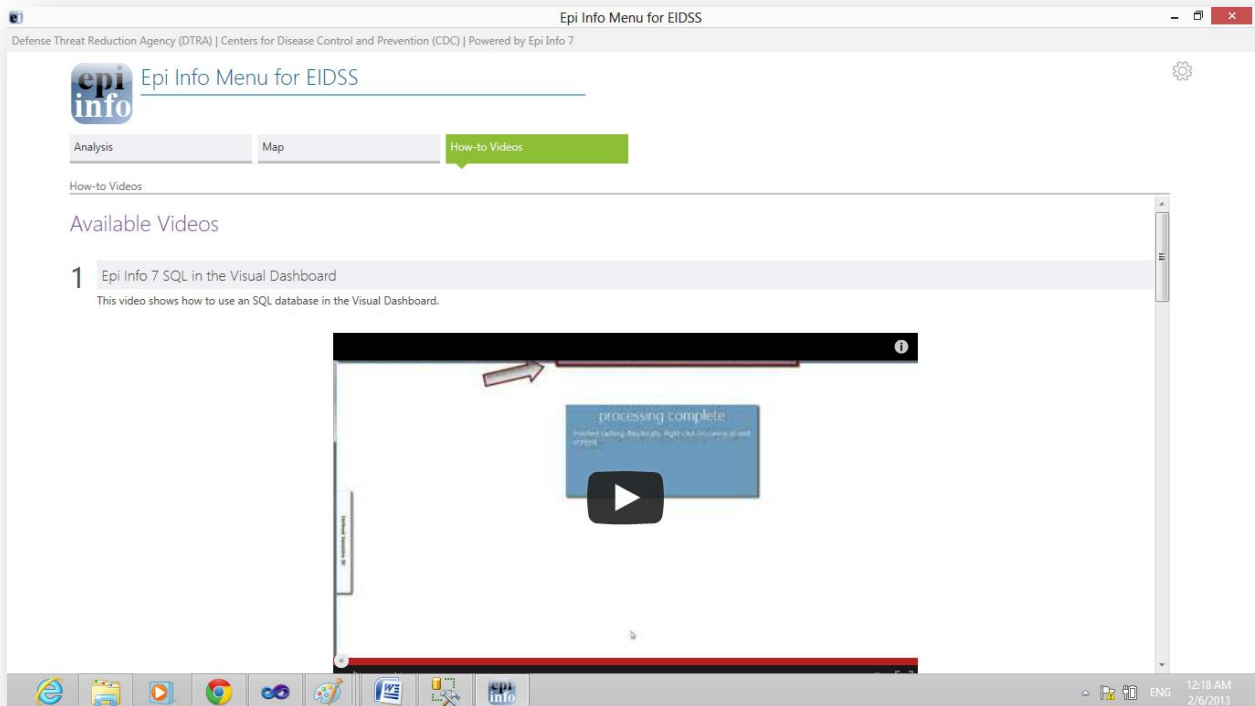
Users may use the Settings panel to limit the data displayed on the maps.



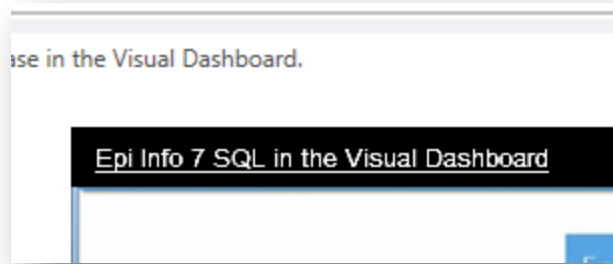
Use this feature to limit maps to particular diseases. The “Set” button must be pressed for the settings to take effect.

Videos

The Custom Menu for EIDSS is preconfigured to load various Epi Info 7 help videos



Clicking on the video title inside the video player launches the video web page on the user’s default web browser.



Customization

The Custom Menu for EIDSS is entirely dynamic and driven by the accompanying XML file named CustomMenu.xml. Editing this XML file will affect changes to the Custom Menu user interface and various features.

Top Level UI

```
<?xml version="1.0" encoding="UTF-8"?>
- <CustomMenu>
  <Title>Epi Info Menu for EIDSS</Title>
  <Icon>icon.png</Icon>
  <Header>Defense Threat Reduction Agency (DTRA) | Centers for Disease Control
    and Prevention (CDC) | Powered by Epi Info 7</Header>
```

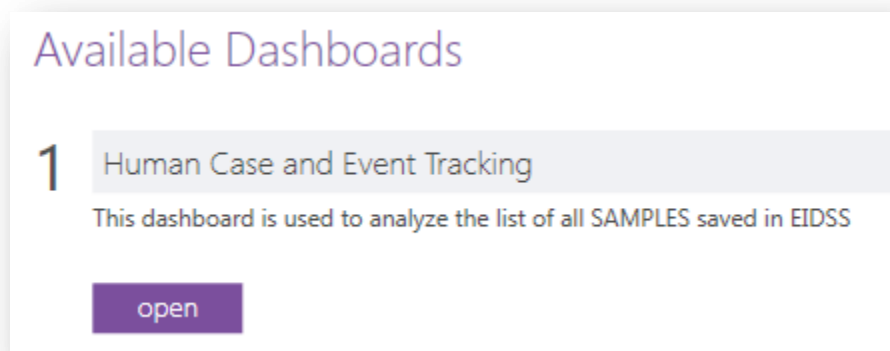
The Title, Icon, and Header elements affect the top level user interface. Use this to provide a country specific title or to specify a different icon file.



Analysis Panel

```
- <AnalysisPanel>
  <Title>Analysis</Title>
  - <Dashboards>
    - <Dashboard FileName=".\\EIDSS\\Dashboards\\HumanCaseEvent.cvs7"
      Description="This dashboard is used to analyze the list of all SAMPLES saved
      in EIDSS" Title="Human Case and Event Tracking">
      - <CustomQuery TableName="human_case_and_event_tracking_en">
        <WhereClause Setting="setting1" Text="Human_Case_Date_Entered
        >= @SETTING"/>
        <WhereClause Setting="setting2" Text="Human_Case_Date_Entered
        <= @SETTING"/>
        <WhereClause Setting="setting4" Text="Human_Case_Final_Diagnosis
        = @SETTING"/>
      </CustomQuery>
    </Dashboard>
    + <Dashboard
      FileName=".\\EIDSS\\Dashboards\\HumanCaseDiseaseExposure.cvs7"
      Description="This dashboard is used to analyze the list of all HUMAN CASES
      saved in EIDSS" Title="Human Case Disease Exposure">
    + <Dashboard
      FileName=".\\EIDSS\\Dashboards\\HumanCaseEpiInvestigation.cvs7"
      Description="This dashboard is used to analyze the list of all PATIENTS'
      CONTACTS that are saved in EIDSS" Title="Human Case Epi Investigation">
    + <Dashboard
      FileName=".\\EIDSS\\Dashboards\\HumanCasePersonPlaceTime.cvs7"
      Description="This dashboard is used to analyze the list of all HUMAN CASES
      saved in EIDSS" Title="Human Case Persons, Place and Time">
  </Dashboards>
```

The AnalysisPanel element affects the display of the Analysis tab, specifies which dashboards to display in the Available Dashboards list, and further specifies how the Settings panel is to be used by the dashboard's SELECT query.



The Settings child element of AnalysisPanel specifies the contents of the Settings panel.

```
- <Settings>
  <Setting Title="Start Date" Value="" VariableType="date" Name="setting1"/>
  <Setting Title="End Date" Value="" VariableType="date" Name="setting2"/>
  <Setting Title="Rayon" Value="" VariableType="dropdown" Name="setting3"
    Query="Select distinct(PATIENT_CURRENT_RESIDENCE_RAYON) from
    human_case_persons_place_time_en"/>
  <Setting Title="Disease" Value="" VariableType="dropdown" Name="setting4"
    Query="Select distinct(human_case_final_diagnosis) from
    human_case_and_event_tracking_en"/>
</Settings>
```

The screenshot shows a 'Your Settings' dialog box with the following elements:

- Start Date:** A date picker control with the text 'Select a date' and a calendar icon showing the number '15'.
- End Date:** A date picker control with the text 'Select a date' and a calendar icon showing the number '15'.
- Rayon:** A dropdown menu with a downward-pointing arrow.
- Disease:** A dropdown menu with a downward-pointing arrow.
- Set:** A large purple button at the bottom of the dialog.

A menu designer may add as many setting nodes as desired. Currently supported variable types are “date” and “dropdown”. Settings of type “dropdown” require a query to be specified that will populate the drop down control.

Note that the “Name” attribute is used to relate a Setting to the Where Clause of a dashboard’s query:

```

<Dashboard FileName=".\\EIDSS\\Dashboards\\HumanCaseEvent.cvs7"
Description="This dashboard is used to analyze the list of all SAMPLES saved
in EIDSS" Title="Human Case and Event Tracking">
  - <CustomQuery TableName="human_case_and_event_tracking_en">
    <WhereClause Setting="setting1" Text="Human_Case_Date_Entered
      >= @SETTING"/>
  </CustomQuery>
</Dashboard>

```

```

<Settings>
  <Setting Title="Start Date" Value="" VariableType="date" Name="setting1"/>
  <Setting Title="End Date" Value="" VariableType="date" Name="setting2"/>
  <Setting Title="Rayon" Value="" VariableType="dropdown" Name="setting3"
</Settings>

```

Map Panel

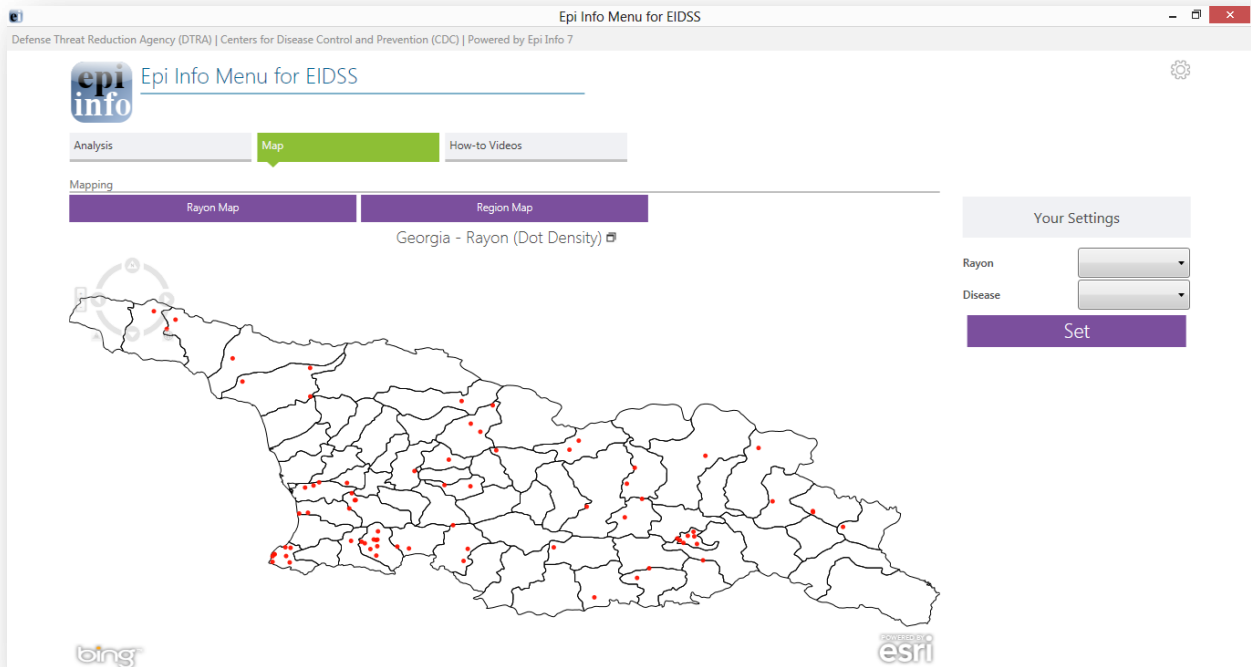
```

<MapPanel>
  <Title>Map</Title>
  - <Maps>
    - <Map FileName=".\\EIDSS\\Maps\\EIDSS_Georgia_Rayons.map7"
      Description="Georgia - Rayon (Dot Density)" Title="Rayon Map">
      - <CustomQuery TableName="human_case_persons_place_time_en">
        <WhereClause Setting="setting1"
          Text="Patient_Current_Residence_Rayon = @SETTING"/>
        <WhereClause Setting="setting2" Text="Human_Case_Final_Diagnosis
          = @SETTING"/>
      </CustomQuery>
    </Map>
    + <Map FileName=".\\EIDSS\\Maps\\EIDSS_Georgia_Regions.map7"
      Description="Georgia - Region (Choropleth)" Title="Region Map">
    </Map>
  </Maps>
  - <Settings>
    <Setting Title="Rayon" Value="" VariableType="dropdown" Name="setting1"
      Query="Select distinct(PATIENT_CURRENT_RESIDENCE_RAYON) from
        human_case_persons_place_time_en"/>
    <Setting Title="Disease" Value="" VariableType="dropdown" Name="setting2"
      Query="Select distinct(human_case_final_diagnosis) from
        human_case_and_event_tracking_en"/>
  </Settings>
</MapPanel>

```

The MapPanel element affects the display of the Map tab, specifies which maps to display on the tab, and further specifies how the Settings panel is to be used by the map's SELECT query. The Settings child element of MapPanel specifies the contents of the Settings panel. A menu designer may add as many setting nodes as desired. Currently supported variable types are "date" and "dropdown". Settings of type "dropdown" require a query to be specified that will populate the drop down control.

Note that the “Name” attribute is used to relate a Setting to the Where Clause of a map’s query.



Video Panel

```
<VideoPanel>
  <Title>How-to Videos</Title>
  - <Videos>
    <Video Description="This video shows how to use an SQL database in the
      Visual Dashboard." Title="Epi Info 7 SQL in the Visual Dashboard"
      VideoUrl="http://www.youtube.com/v/TcOnG_mujOY&hl=en"/>
    <Video Description="This video shows how to use the READ command in
      Classic Analysis to import the data from an SQL database." Title="Epi
      Info 7 READ SQL in Classic Analysis"
      VideoUrl="http://www.youtube.com/v/tXAEL7oS29Q&hl=en"/>
    <Video Description="This video shows how to perform an aberration
      detection analysis in the Visual Dashboard." Title="Epi Info 7 Aberration
      Detection"
      VideoUrl="http://www.youtube.com/v/kmCtyX50lcU&hl=en"/>
    <Video Description="This video shows how to recode a variable in the Visual
      Dashboard." Title="Epi Info 7 Recoding a Variable"
      VideoUrl="http://www.youtube.com/v/PLA6NtFtoak&hl=en"/>
    <Video Description="This video shows how to run an aberration detection
      analysis with non-aggregated, visit-level data with user defined
      variables, and filters in the Visual Dashboard." Title="Epi Info 7
      Aberration Detection with Non-Aggregated Data"
      VideoUrl="http://www.youtube.com/v/k9hcQbBXmoE&hl=en"/>
  </Videos>
</VideoPanel>
```

The VideoPanel element affects the display of the How-to Videos tab and specifies which videos to show on the tab.