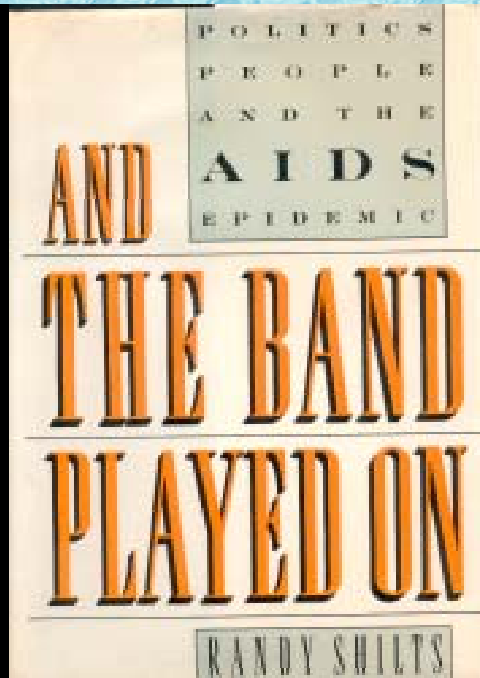


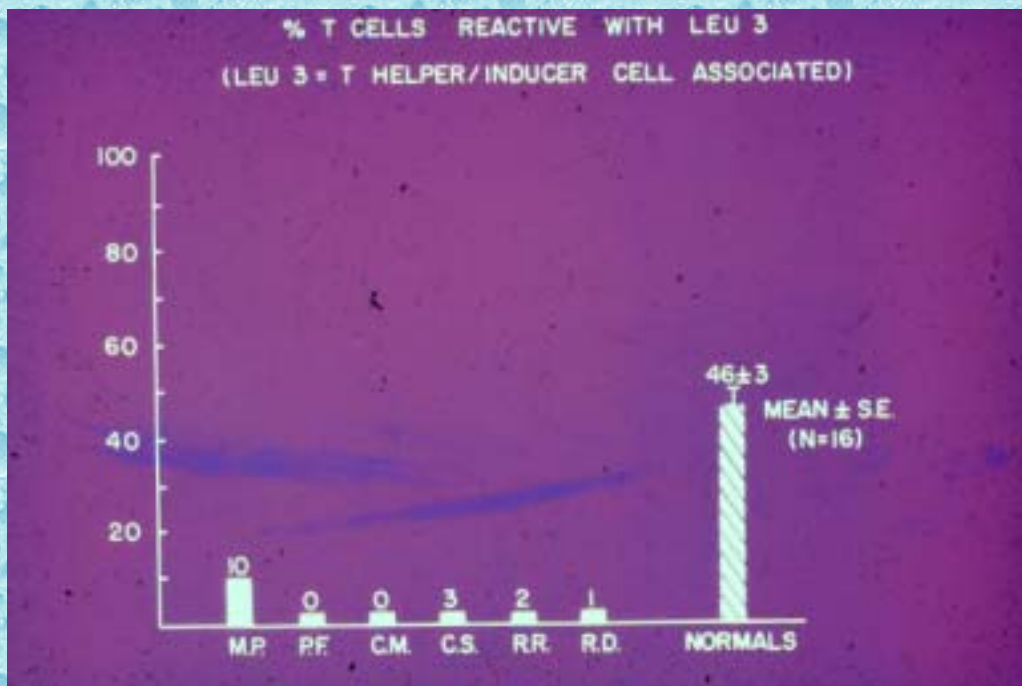
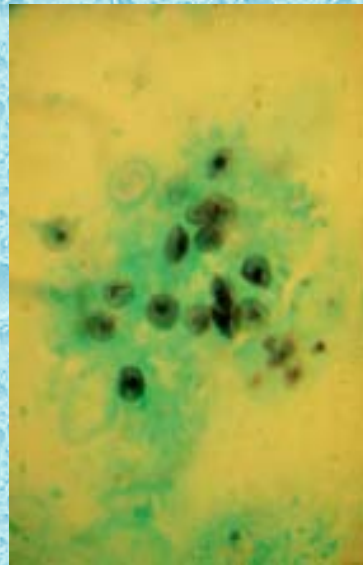
AIDS: THE FIRST CASE REPORTS

Michael S. Gottlieb, M.D.

Los Angeles, California



1981







1981
AIDS CASES
152

1982

Mystery illness's origins
puzzle doctors

**Doctors Find Clue to
Homosexual Illness**

**Researcher
Develops Test
to Detect AIDS**

**Do Poppers
Cause Cancer?**
Links Seen to Drugs, Genetics

BY THE WASHINGTON JOURNAL, Tuesday, January 28, 1982
**New, Often-Fatal Illness in Homosexuals
Turns Up in Women, Heterosexual Males**

**Haitians Linked to
AID Epidemic**

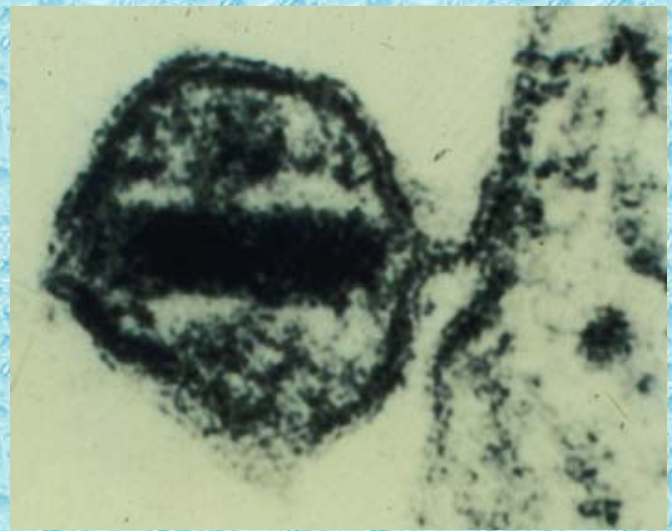
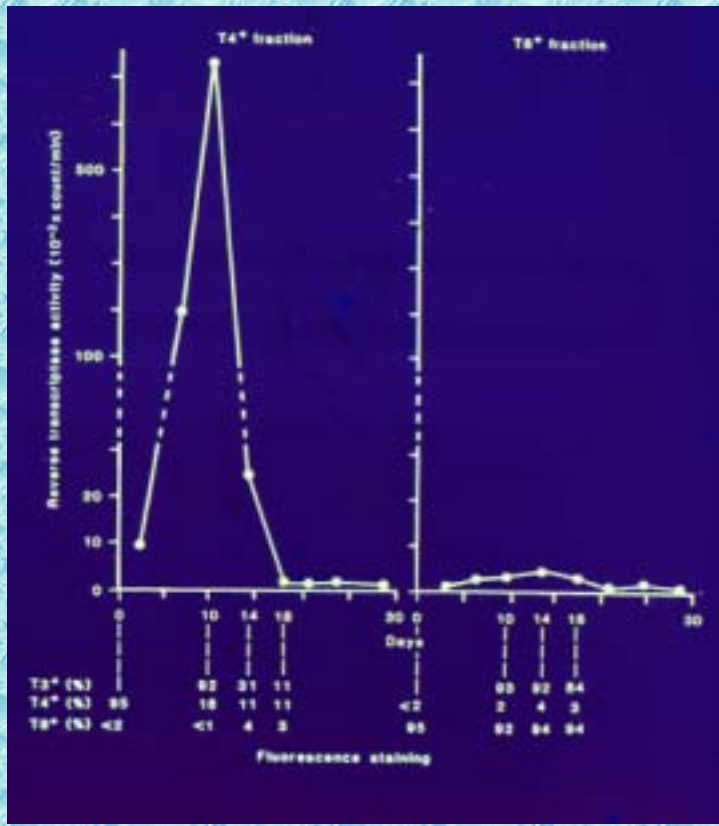
**22 More Children Contract
New Immune Deficiency—**

IS OUR 'LIFESTYLE'
HAZARDOUS
TO OUR
HEALTH?
PART II

Etiologic Speculation c.1982

- **CMV**
- **Poppers**
- **Immune system overload**
- **Abnormal immune response to sperm**
- **African swine fever virus**
- **Bioterrorism**
- **Laboratory accident**

1983



Take Away Lessons

- **Keep an eye out for the unusual**
- **Have good lab backup**
- **Maintain open lines of communication**