

## Downloading and Installing Epi Info™ 7

---

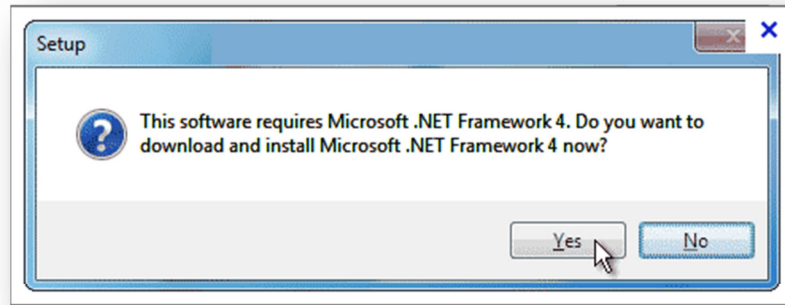
Epi Info™ 7 is a public domain suite of software tools designed for the global community of public health practitioners and researchers. It provides for easy data entry form and database construction, a customized data entry experience, and data analyses with epidemiologic statistics, maps, and graphs for public health professionals who may lack an information technology background.

Epi Info™ 7 is used for outbreak investigations; for developing small to mid-sized disease surveillance systems; as analysis, visualization, and reporting (AVR) components of larger systems; and in the continuing education in the science of epidemiology and public health analytic methods at schools of public health around the world

Note that you must have administrative privileges to the computer to install Epi Info™ 7 when using the installation file (.EXE). Most users on a personal computer already have these rights. In an office, however, where the computer is provided by your employer, you may not have administrative rights and should contact your system administrator before proceeding. If you use the ZIP file, this will not require administrative privileges, and you will be able to install Epi Info™ 7 without any problems.

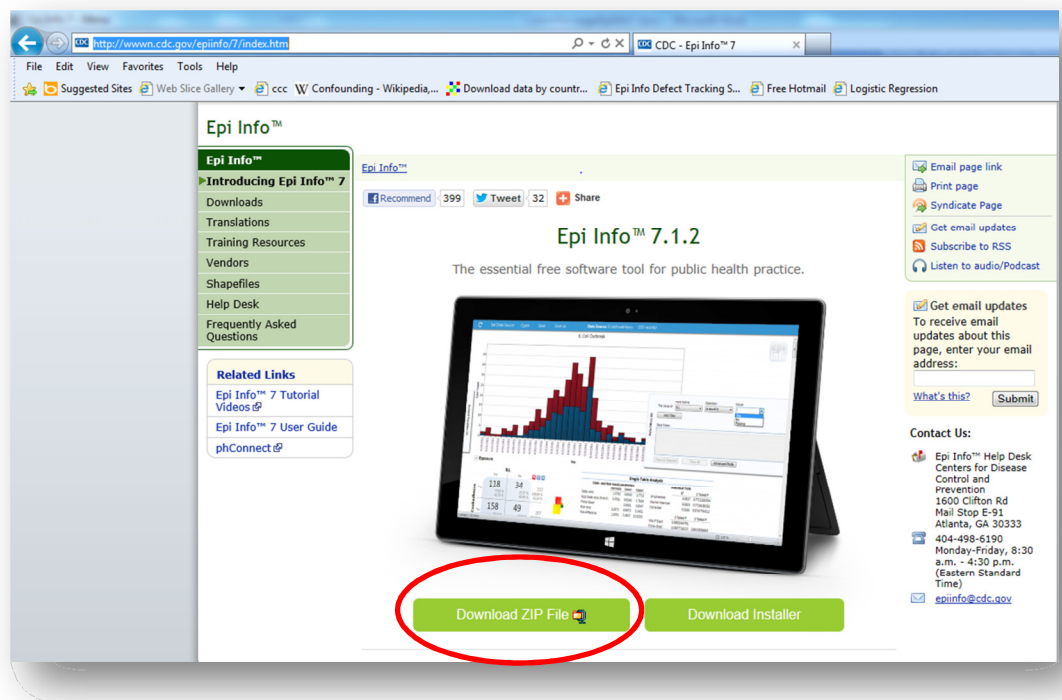
**NOTE:** Installation requirements:

- Windows operating system: Windows XP or higher.
- 256 MB RAM recommended
- 1 GHz microprocessor
- Make sure computer has most recent Windows updates.
- Microsoft .NET Framework 4.0 or higher. Please make sure to install the .NET 4.0 framework prior to installing Epi Info 7 or you will receive the following message:

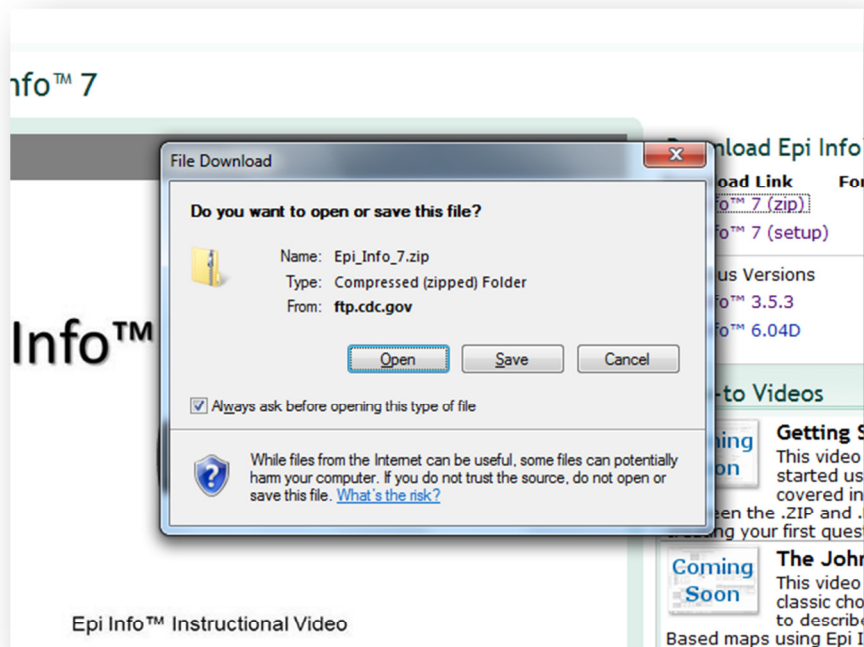


## Steps to download from our webpage:

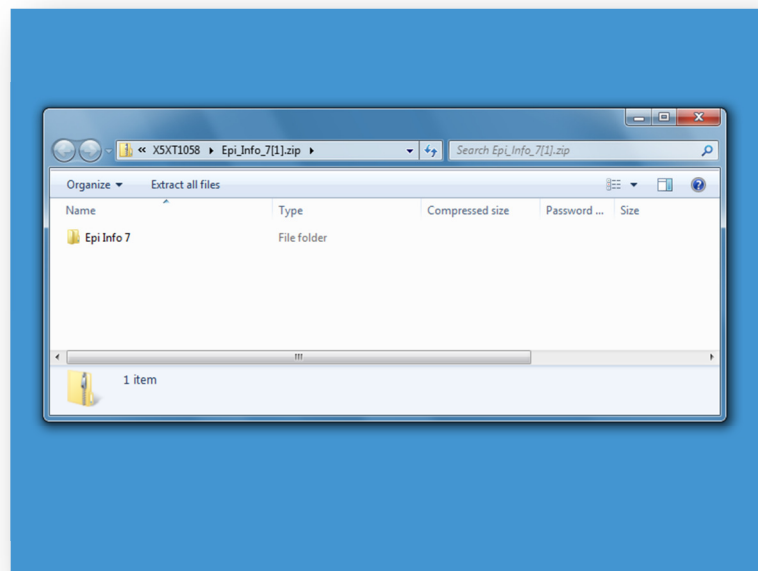
- 1) Navigate to the Epi Info™ webpage: <http://www.cdc.gov/epiinfo/7/index.htm>
- 2) Click the **Download ZIP File** option.



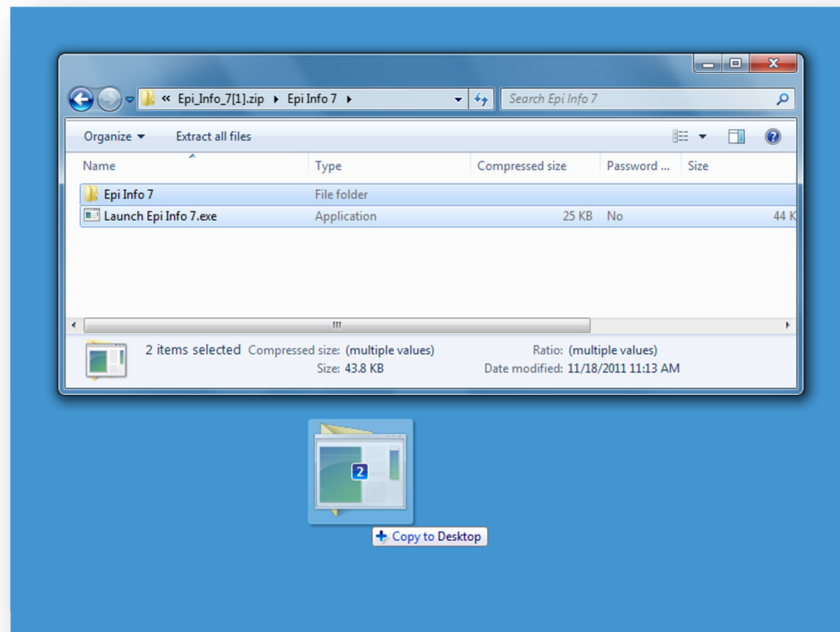
- 3) Download the zip file to your desktop.
- 4) Select “Open” (or “Run”) when prompted, depending on your web browser. Internet Explorer 8 is shown here.



- 5) Double-click the "Epi Info 7" item in the explorer window. Note that on some computers, this file may have opened in another ZIP archive program.



- 6) Select the two items in the folder and drag them to your desktop.



7) Double-click on the “Launch Epi Info 7” icon to start.

Steps for downloading and installing the software are shown in the following instructional video: <http://www.youtube.com/watch?v=FYrWILGO7ZE>