

Copying the Value of a Field from a Main form to a Related form using Check Code

Copy the Value of a Field from a Main Form to a Related Form

When users have developed a relational database setup using Epi Info™ 7, it might be appropriate to transfer values entered in the parent form (i.e. core demographics) into the child form (i.e. Visits information). In order to accomplish this process, Check Code must be created for a value from a field in the main form to appear in a related form (i.e., there may be a Case ID Number or Patient's Name that needs to be visible in the parent and child forms).

The following instructions assume the parent and child forms already exist. Let's assume that the Parent form is called **Surveillance** while the Child form is called **Hepatitis**. The field to be copied needs to exist in the parent form or be created in the parent form prior to the incorporation of the check code in the child form (i.e Last Name in parent form will be passed to Last Name in child form). Let's make the assumption that the name of the field on the Parent form whose value will be copied to the Child form is called **PatientId**.

1. From Form Designer, open your project and click on the child form name from the Project Explorer tree.
2. Create a new field. The new field must be the same field type as the field being copied from the parent form. For this example, use **PatientId**.
3. Select the **Read Only** option.
4. Click **OK**. The new field appears in the form. This is where the value from the parent form will be assigned and displayed during data entry on the child form.
5. Click **Check Code** or select **Tools > Check Code Editor**. The Check Code Editor opens.
6. From the **Choose Field Block for Action** list box, select the page corresponding to where the PatientId field was placed. Let's make the assumption that this field was created on Page 1. For the Page, select the **before** from the *Before* or *After* Section.
7. Click the **Add Block** button.

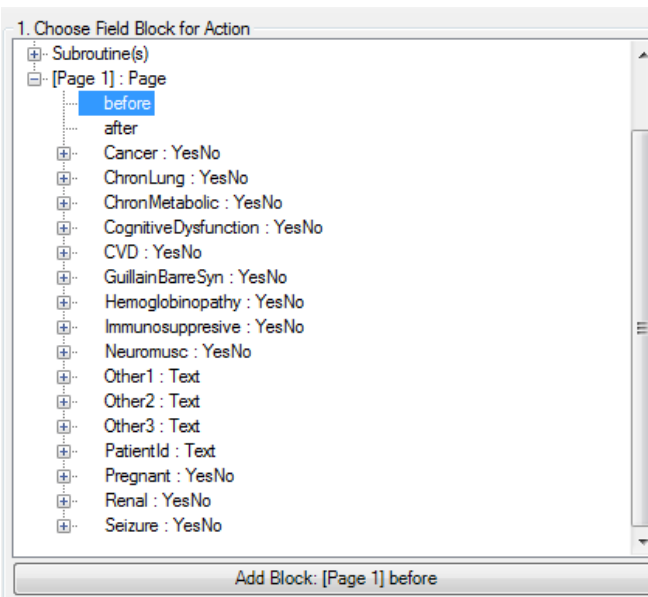


Figure 0.1: Choose Field Block for Action

8. From the **Add Command to Field Block** list box, click **Assign**. The **ASSIGN** dialog box appears.
9. From the **Assign Variable** drop-down list, select the new variable, **PatientId**.
10. In the = Expression area, type the **field name** from the parent form, in this case **PatientId**. This field name must be prefixed by the parent form's name followed by a period in the Assign expression. We will need to make that modification once the command is written into the Program Editor.

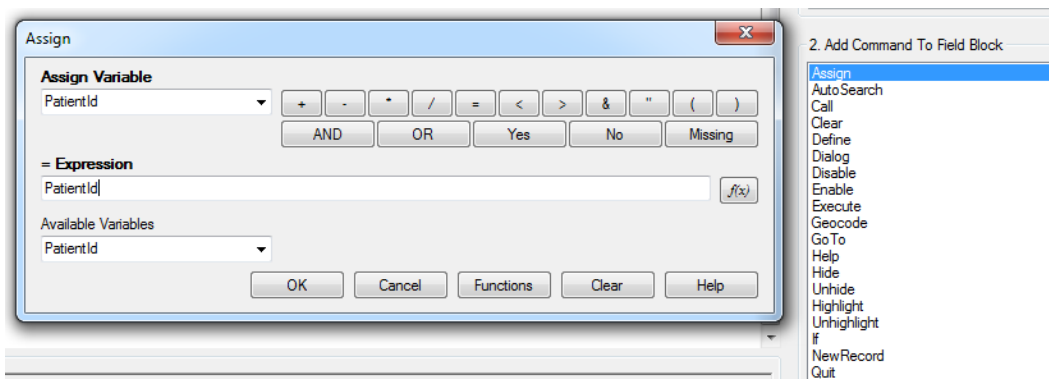
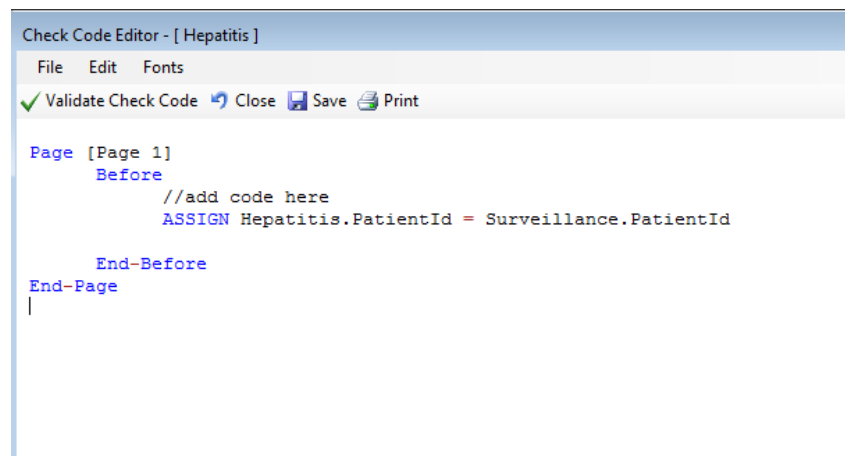


Figure 0.2: Copy Value- Assign dialog box

11. Click **OK**.

- The code appears in the Check Code Editor. If the child form already has a field with the same name as the one being copied from the parent form, it is important to distinguish the parent's field name. This field name must be prefixed by the parent form's name followed by a period in the Assign expression. In this example, Hepatitis is the name of the child form while Surveillance is the name of the parent form. If the child form does not have a field with the same name as the one being copied from the parent form, it is sufficient to indicate just the field name. Therefore, for this example, this modification will be required to the syntax since the field is called the same on both forms. Once completed, your syntax should look like the one on Figure 3.32.



```
Check Code Editor - [ Hepatitis ]
File Edit Fonts
✓ Validate Check Code ↻ Close 💾 Save 🖨 Print

Page [Page 1]
Before
    //add code here
    ASSIGN Hepatitis.PatientId = Surveillance.PatientId
End-Before
End-Page
|
```

Figure 0.3: Copy Value Check Code Command

- Click the **Validate Check Code** button and, if needed, correct any issues.
- Click **Save**.