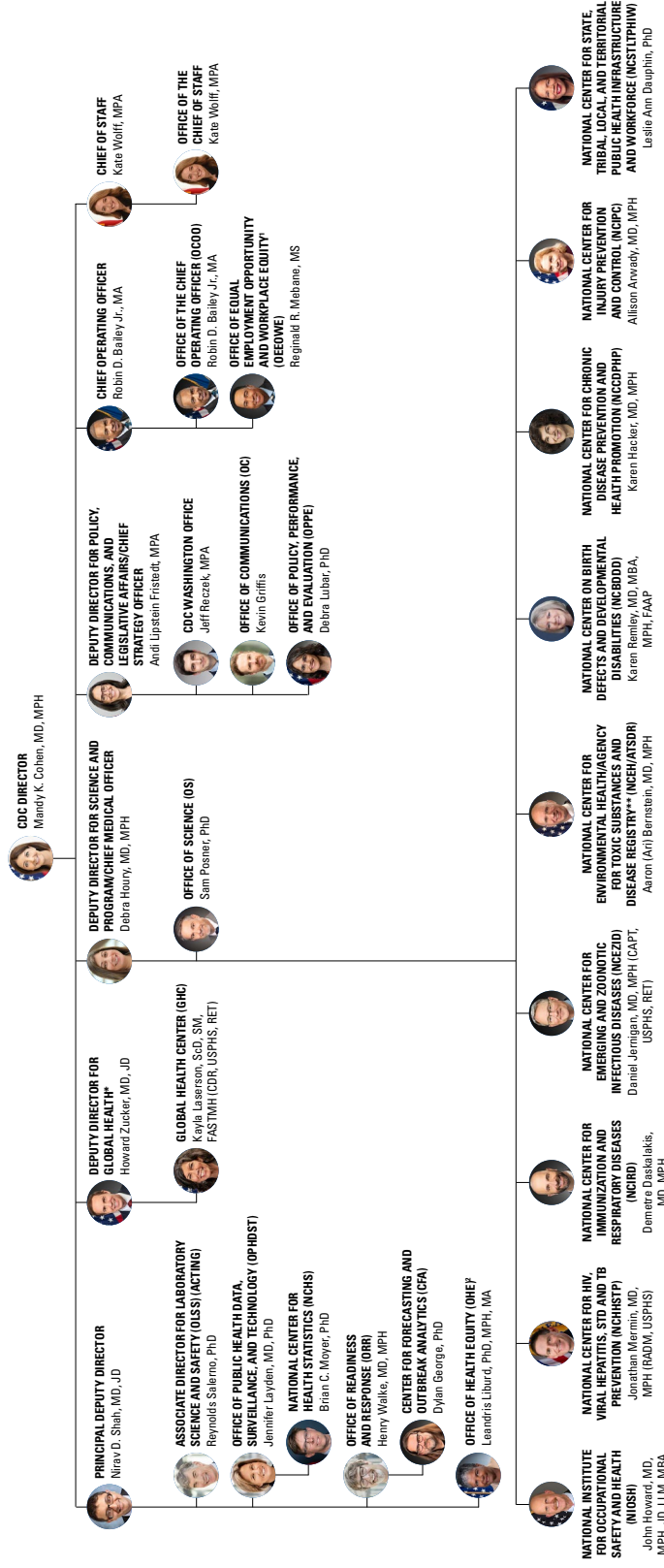


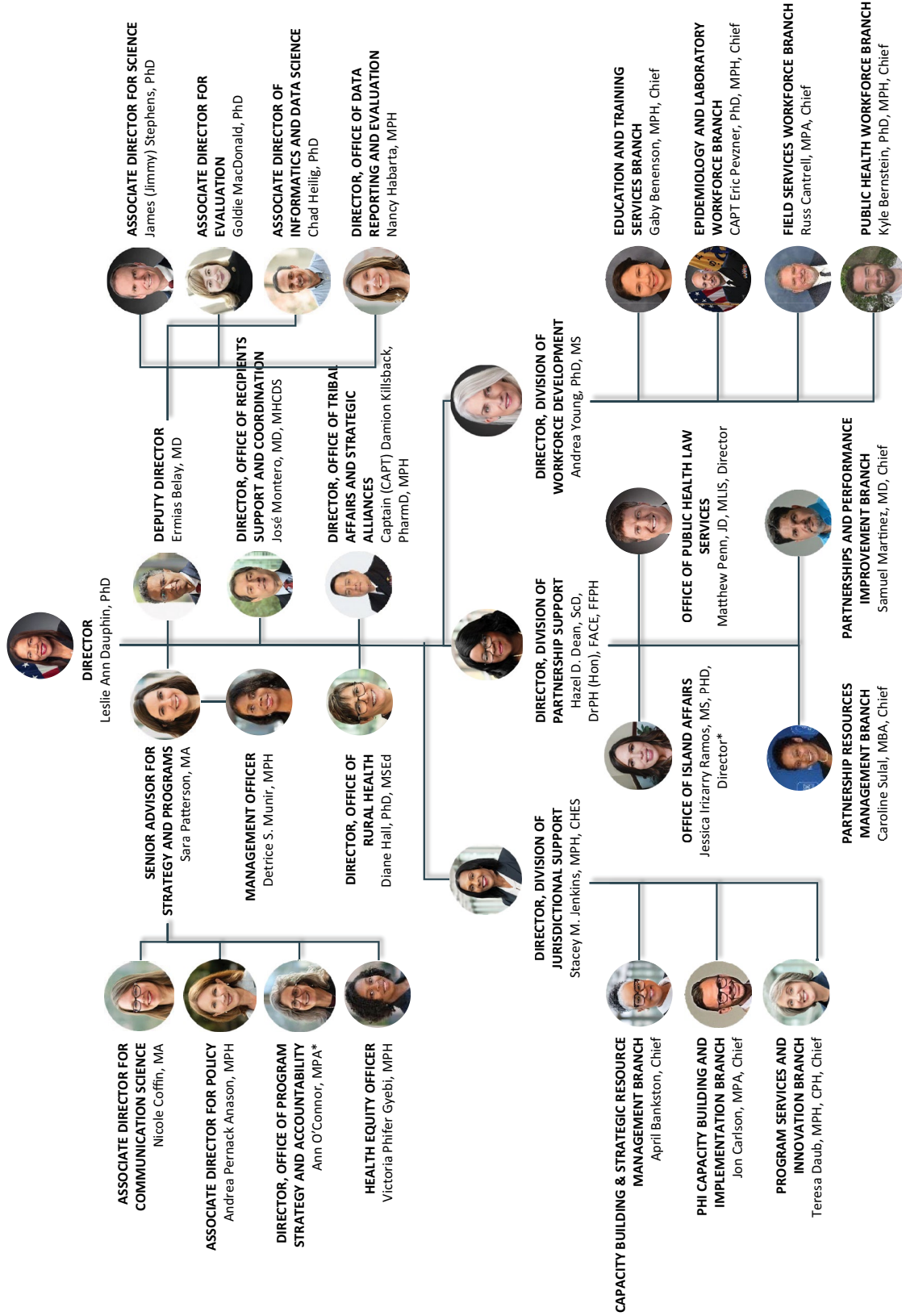
Organization Chart CDC

Department of Health and Human Services Functional Chart for the Centers for Disease Control and Prevention



* Global health issues across CBAs are to be brought to the attention of the DD for Global Health.
 ** ATSDR is an OPHD within DPHHS but is managed by a common director's office.
 † Adheres to 29 C.F.R. § 1914.102 (b) (4)
 ‡ Adheres to 42 U.S. Code § 300a-6a
 Subject to change, last updated to March 26, 2024

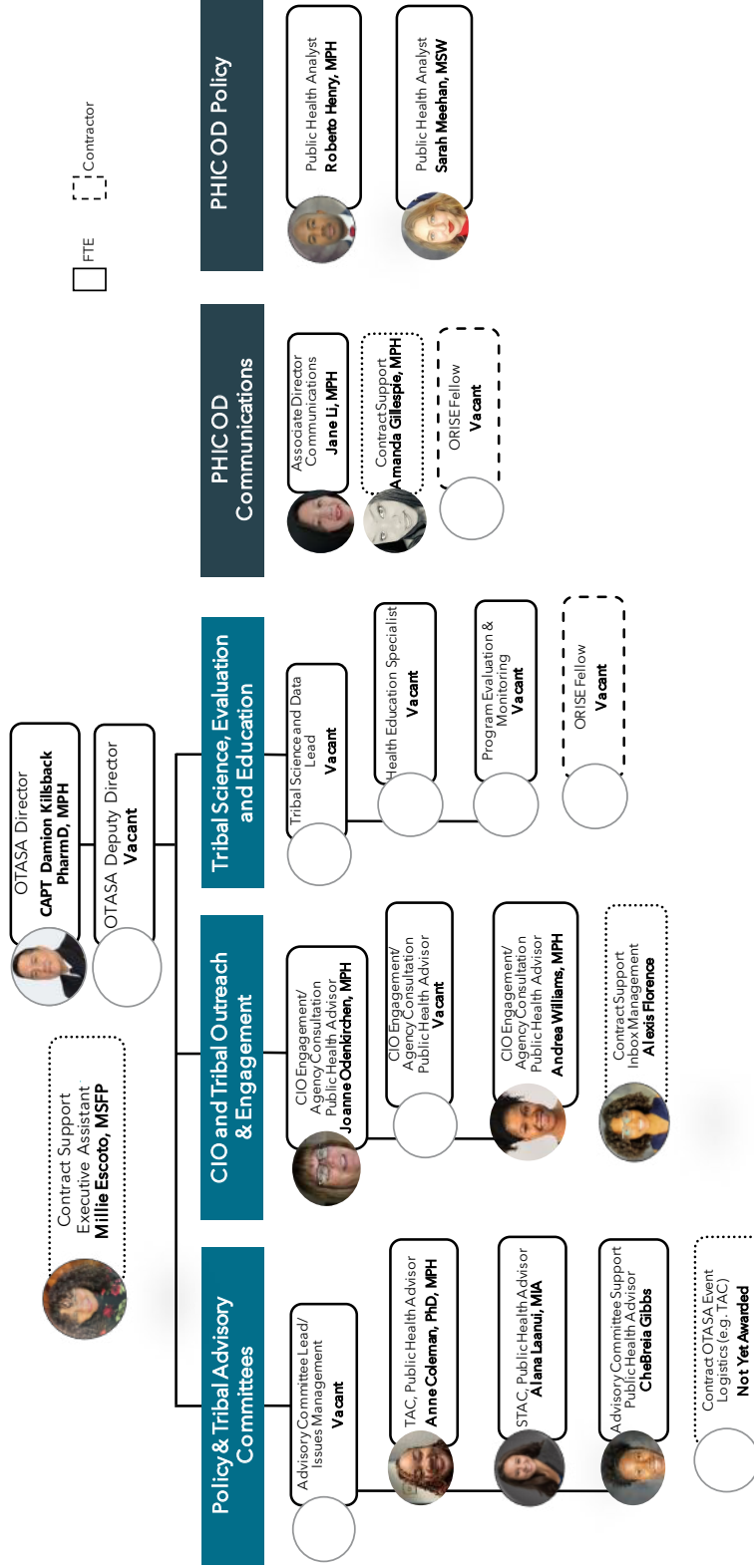
Organization Chart PHIC



*Acting
Last updated: June 2024

Organization Chart OTASA

Office of Tribal Affairs and Strategic Alliances*



*Proposed organizational structure as of January 24, 2024