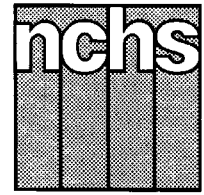


# Monthly Vital Statistics Report



Provisional Data From the CENTERS FOR DISEASE CONTROL AND PREVENTION/National Center for Health Statistics

## Births, Marriages, Divorces, and Deaths for January 1996

### Births

According to provisional reports, an estimated 320,000 births occurred in the United States during January 1996. This was a 9-percent decrease from the provisional number of births reported for January 1995 (350,000). The birth rate, 14.3 live births per 1,000 population, was 9 percent lower than the rate of 15.8 for January 1995. The fertility rate, 63.5 live births per 1,000 women 15–44 years, was 9 percent lower than the comparable rate for January 1995 (69.4). The seasonally adjusted fertility rate (66.6) was also 9 percent lower than the comparable rate for January 1995 (72.8).

An estimated 3,862,000 live births occurred in the 12-month period ending

with January 1996, a 3-percent decline from the 3,978,000 births reported for the same period a year earlier. The birth rate of 14.7 was 3 percent lower than the rate of 15.2 for the preceding 12-month period. The fertility rate for the most recent 12-month period was 64.9, 3 percent lower than the rate for the 12 months ending with January 1995 (67.0). These lower rates continue the generally downward trend observed since early 1991.

### Natural increase

As a result of natural increase, the excess of births over deaths, an estimated 99,000 people, or 4.4 persons per 1,000 population, were added to the population during January 1996.

For the 12-month period ending with January 1996, 1,551,000 persons were added to the population. This represents a rate of natural increase of 5.9, 9 percent lower than the rate of 6.5 for the preceding 12-month period. The decline in the rate of natural increase was due to a decrease in the birth rate and an increase in the death rate.

### Marriages

The provisional number of marriages for January 1996 was 106,000, 5 percent fewer than the number for January a year earlier (111,000). The marriage rate for January was 4.9 per 1,000 population, a 4-percent drop from the comparable rate

### Provisional Vital Statistics for the United States

[Rates for infant deaths are deaths under 1 year per 1,000 live births; fertility rates are live births per 1,000 women aged 15–44 years; all other rates are per 1,000 total population. Data are subject to monthly reporting variation; see [Technical notes](#)]

Item	January				12 months ending with January				
	Number		Rate		Number		Rate		
	1996	1995	1996	1995	1996	1995	1996	1995	1994
Live births . . . . .	320,000	350,000	14.3	15.8	3,862,000	3,978,000	14.7	15.2	15.7
Fertility rate . . . . .	...	...	63.5	69.4	...	...	64.9	67.0	68.8
Deaths . . . . .	221,000	220,000	9.9	9.9	2,311,000	2,281,000	8.8	8.7	8.9
Infant deaths . . . . .	2,400	2,700	7.5	7.9	29,000	31,600	7.5	8.0	8.2
Natural increase . . . . .	99,000	130,000	4.4	5.9	1,551,000	1,697,000	5.9	6.5	6.8
Marriages . . . . .	106,000	111,000	4.9	5.1	2,331,000	2,366,000	8.9	9.1	9.1
Divorces . . . . .	96,000	96,000	4.3	4.3	1,168,000	1,190,000	4.4	4.6	4.6
Population base (in millions) . . . . .	...	...	264.0	261.6	...	...	263.0	260.9	258.2

... Category not applicable.

NOTES: Figures include revisions received from the States. Twelve-month figures for the current year reflect revisions received for previous months, and figures for earlier years may differ from those previously published.



U.S. DEPARTMENT OF HEALTH AND HUMAN SERVICES  
Public Health Service  
Centers for Disease Control and Prevention  
National Center for Health Statistics



in 1995 (5.1). January typically has the lowest marriage rate of any month.

Marriages performed during the 12-month period ending with January 1996 numbered 2,331,000, a 1-percent decline compared with the same period a year earlier (2,366,000). The marriage rate for the current 12-month period (8.9) was 2 percent lower than the rate for the period ending with January 1995 (9.1).

**Divorces**

The estimated number of divorces granted in January 1996 (96,000) was the same as the number granted for January 1995. The divorce rate per 1,000 population for January was 4.3 in both years.

Although the number of divorces for the month of January was the same in 1995 and 1996, the number for the 12-month period ending with January 1996 (1,168,000) was 2 percent lower than the comparable number for the same period ending with January 1995 (1,190,000). The divorce rate for the current 12-month period (4.4) was 4 percent lower than the rate for the comparable period a year earlier (4.6).

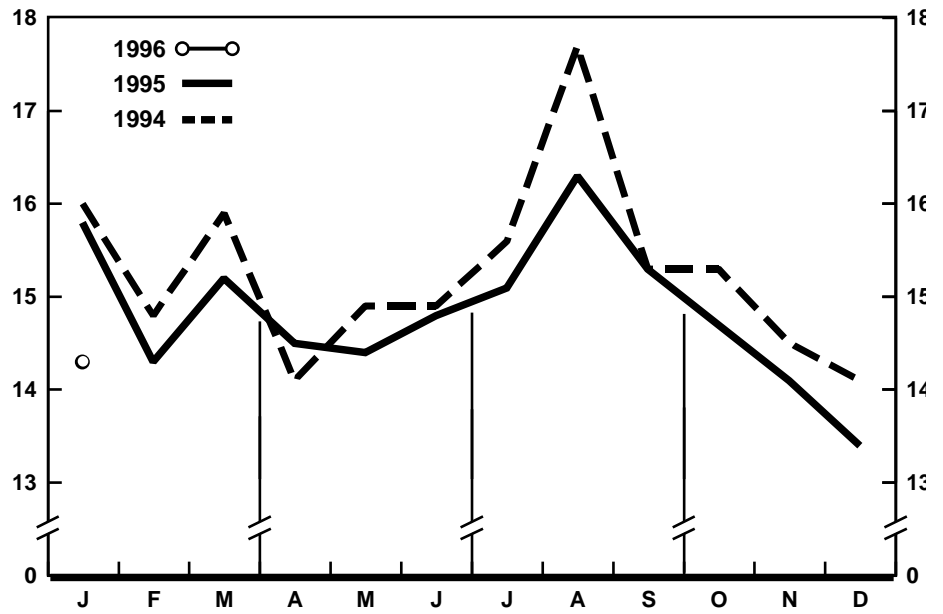
**Deaths**

For January 1996 there were an estimated 221,000 deaths in the United States. The death rate was 9.9 deaths per 1,000 population, the same as the rate for January a year earlier. Among the 221,000 deaths for January 1996 were 2,400 deaths under 1 year of age.

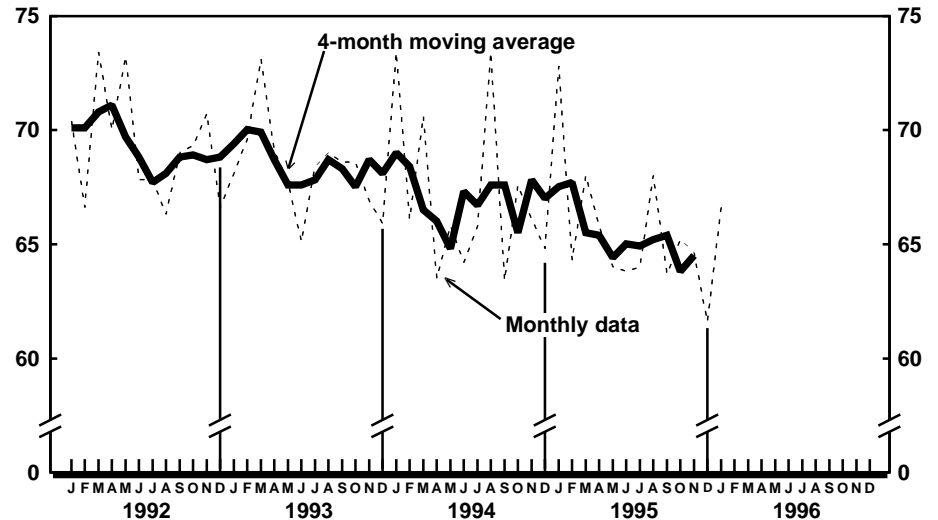
According to provisional statistics, the death rate for the 12 months ending with January 1996 was 8.8 deaths per 1,000 population, 1 percent higher than the rate of 8.7 for the comparable 12-month period a year earlier. The infant mortality rate for this 12-month period was 7.5 per 1,000 live births, 6 percent lower than the rate of 8.0 for the 12 months ending with January 1995.

**Mortality for 1995**

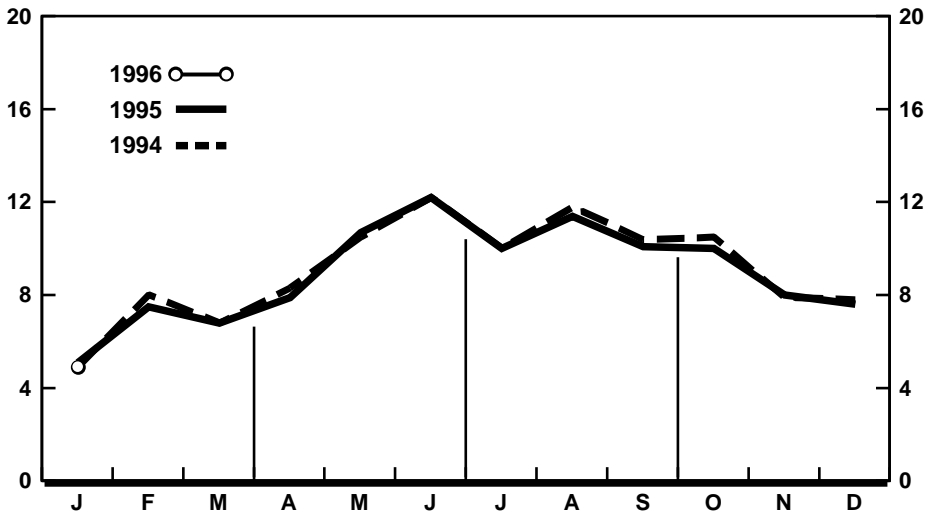
Provisional mortality data based on the Current Mortality Sample (a 10-percent sample of the death certificates) are now available for the entire year. The provisional death rate per 100,000 population for 1995 was 878.6, slightly higher than the rate of 876.9 for 1994. The provisional age-adjusted death



Provisional birth rates per 1,000 population by month: United States, 1994-96



Provisional seasonally adjusted fertility rates per 1,000 women aged 15-44 years: United States, 1992-96



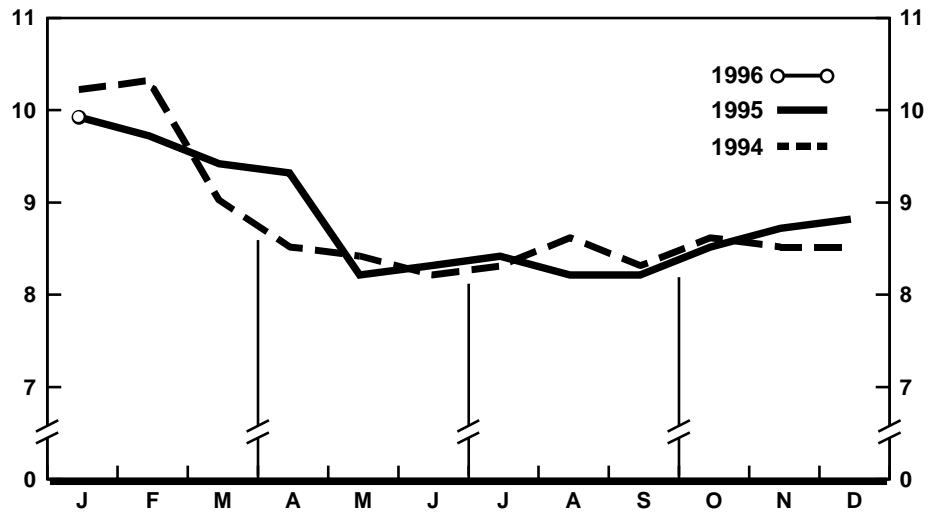
Provisional marriage rates per 1,000 population by month: United States, 1994-96

rate for 1995 was 503.0 per 100,000 U.S. standard million population, 1 percent lower than the rate of 508.9 for 1994. Age-adjusted death rates control for changes and variations in the age composition of the population; therefore, they are better indicators than crude rates for showing changes in mortality risk over time and for showing differences between race-sex groups within the population. Among the race-sex groups, the estimated age-adjusted death rate decreased for white males. By age the death rate for the total population decreased for the following age groups: Under 1 year, 55–64 years, 65–74 years, and 75–84 years.

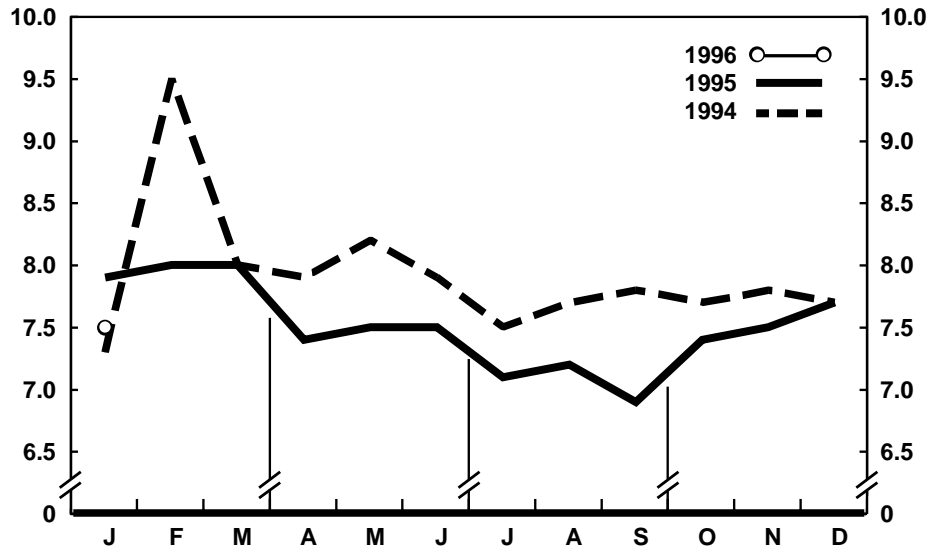
Among the major causes of death, the estimated death rate was higher in 1995 than in 1994 for Diabetes mellitus. Death rates were lower in 1995 than in 1994 for Pneumonia and influenza; Homicide and legal intervention; and Malignant neoplasms, including neoplasms of lymphatic and hematopoietic tissues. The change in the rate from the previous year for Human immunodeficiency virus infection was not statistically significant.

The death rate for firearm mortality for 1995 was 13.5 per 100,000 population, an 8.2-percent decrease from the rate of 14.7 for 1994.

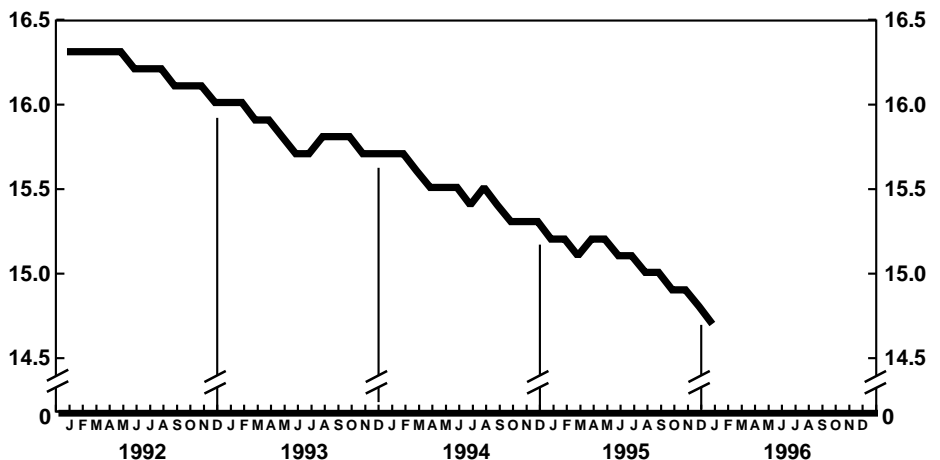
The infant mortality rate for 1995 was 755.6 per 100,000 live births, 5 percent lower than the rate of 791.7 for 1994. For 1995 the estimated infant mortality rate for infants under 28 days was 481.4 compared with a rate of 495.6 for 1994. The change in the mortality rate for infants under 28 days was not statistically significant. The infant mortality rate for infants 28 days–11 months was 272.8, 8 percent lower than the rate for 1994 (296.1). Among causes of infant death, the infant mortality rate decreased between 1994 and 1995 for Sudden infant death syndrome.



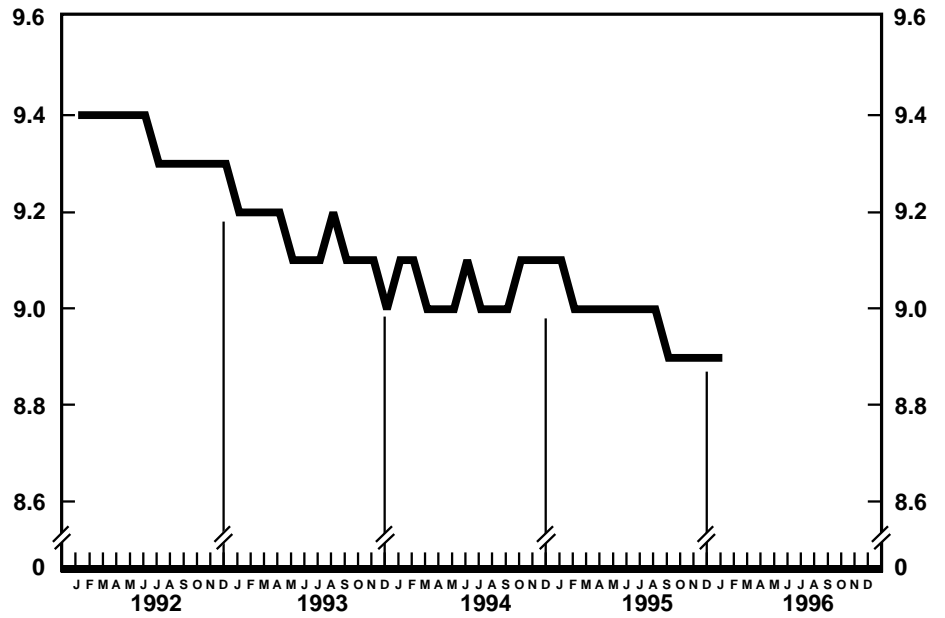
Provisional death rates per 1,000 population by month: United States, 1994–96



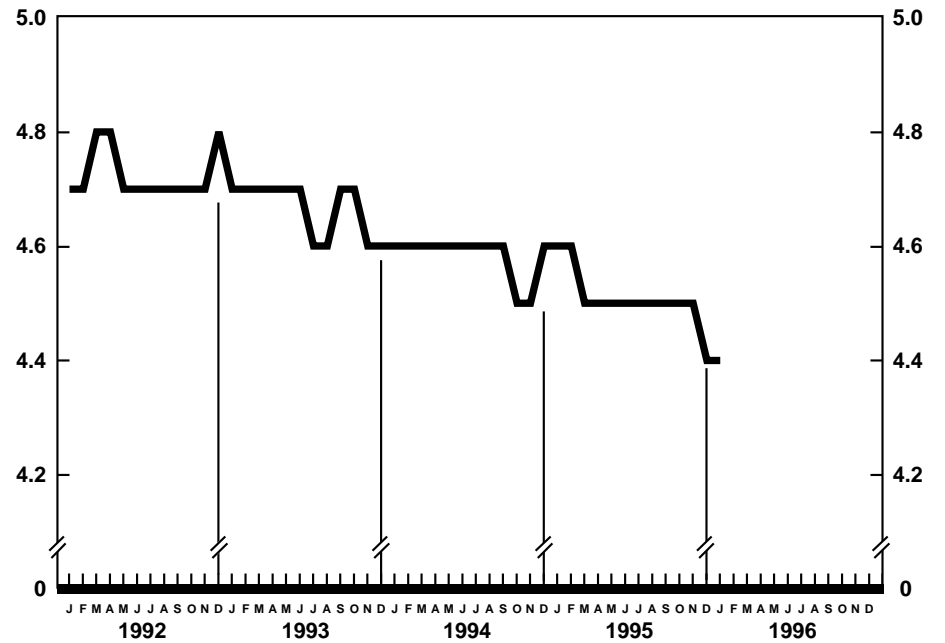
Provisional infant mortality rates per 1,000 live births by month: United States, 1994–96



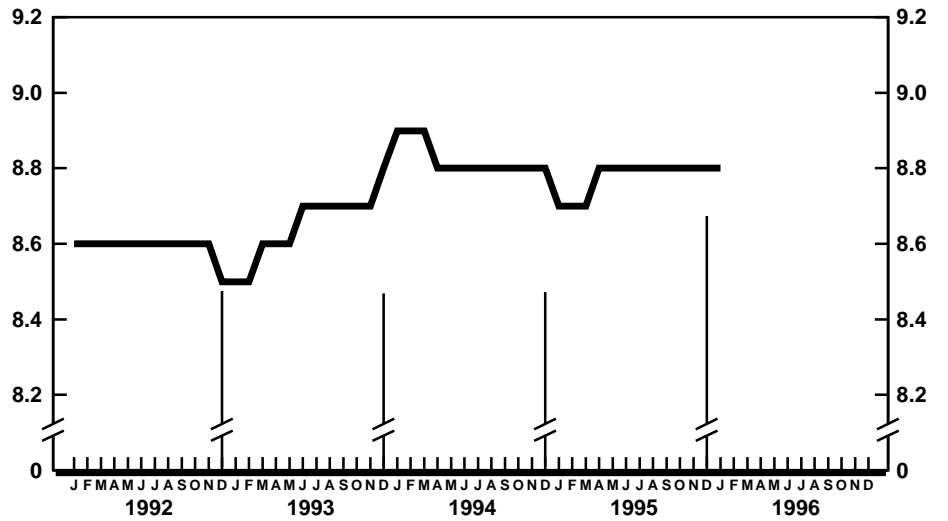
Provisional birth rates per 1,000 population for successive 12-month periods ending with month indicated: United States, 1992–96



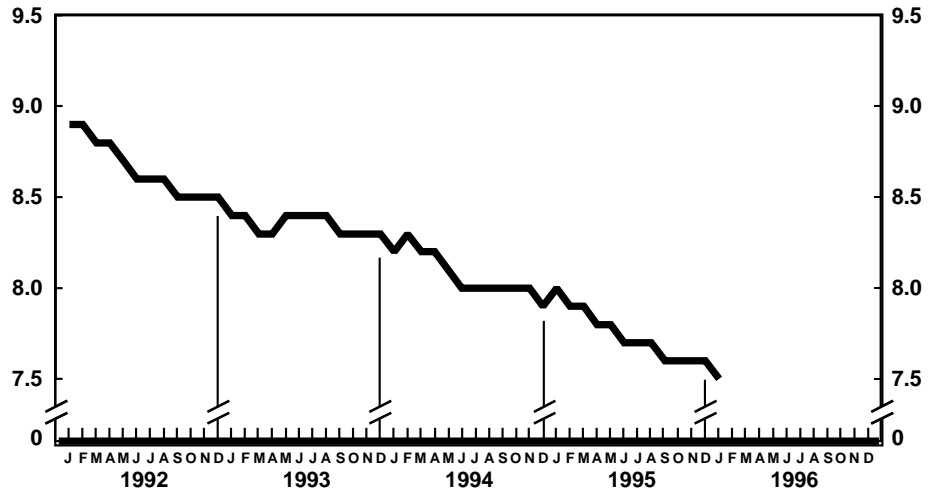
Provisional marriage rates per 1,000 population for successive 12-month periods ending with month indicated: United States, 1992-96



Provisional divorce rates per 1,000 population for successive 12-month periods ending with month indicated: United States, 1992-96



Provisional death rates per 1,000 population for successive 12-month periods ending with month indicated: United States, 1992-96



Provisional infant mortality rates per 1,000 live births for successive 12-month periods ending with month indicated: United States, 1992-96

**Table 1. Provisional number of live births, marriages, divorces, deaths, and infant deaths and rates, by month: United States, January 1995–January 1996**[Data are provisional and are subject to monthly reporting variation; see [Technical notes](#)]

Period	Live births				Marriages		Divorces		Deaths		Infant deaths	
	Number	Rate per 1,000 women aged 15–44 years			Rate per 1,000		Rate per 1,000		Rate per 1,000		Rate per 1,000	
		Unadjusted	Seasonally adjusted <sup>1</sup>		Number	population	Number	population	Number	population	Number	live births
<b>1995:</b>												
January . . . . .	350,000	15.8	69.4	72.8	111,000	5.1	96,000	4.3	220,000	9.9	2,700	7.9
February . . . . .	287,000	14.3	63.1	64.3	146,000	7.5	89,000	4.4	194,000	9.7	2,400	8.0
March . . . . .	338,000	15.2	67.1	68.0	148,000	6.8	98,000	4.4	208,000	9.4	2,700	8.0
April . . . . .	313,000	14.5	64.1	65.8	165,000	7.9	98,000	4.6	200,000	9.3	2,300	7.4
May . . . . .	321,000	14.4	63.5	64.0	238,000	10.7	103,000	4.6	184,000	8.2	2,500	7.5
June . . . . .	318,000	14.8	65.2	63.8	263,000	12.2	104,000	4.8	180,000	8.3	2,400	7.5
July . . . . .	337,000	15.1	66.6	64.0	224,000	10.0	97,000	4.4	188,000	8.4	2,400	7.1
August . . . . .	364,000	16.3	72.1	68.0	254,000	11.4	99,000	4.4	184,000	8.2	2,400	7.2
September . . . . .	331,000	15.3	67.6	63.7	219,000	10.1	99,000	4.6	178,000	8.2	2,200	6.9
October . . . . .	328,000	14.7	64.9	65.2	224,000	10.0	98,000	4.4	190,000	8.5	2,500	7.4
November . . . . .	306,000	14.1	62.6	64.6	174,000	8.0	95,000	4.4	188,000	8.7	2,300	7.5
December . . . . .	300,000	13.4	59.3	61.6	169,000	7.6	92,000	4.1	197,000	8.8	2,400	7.7
<b>1996:</b>												
January . . . . .	320,000	14.3	63.5	66.6	106,000	4.9	96,000	4.3	221,000	9.9	2,400	7.5

<sup>1</sup>The method of seasonal adjustment, developed by the U.S. Bureau of the Census, is described in *The X-11 Variant of the Census Method II Seasonal Adjustment Program*, Technical Paper No. 15 (1967 revision).

NOTE: Figures include all revisions received from the States and, therefore, may differ from those previously published.

**Table 2. Provisional number of live births and deaths: Each division and State, January 1994–96**

[Data are estimates by State of residence; see [Technical notes](#)]

Area	Live births			Deaths		
	January			January		
	1996	1995	1994	1996	1995	1994
New England . . . . .	12,182	16,240	13,895	10,833	10,452	11,133
Maine . . . . .	901	859	942	1,032	864	1,060
New Hampshire . . . . .	1,069	929	945	710	829	838
Vermont . . . . .	475	535	513	406	495	414
Massachusetts . . . . .	6,004	9,065	7,163	5,403	4,887	4,981
Rhode Island . . . . .	791	675	892	831	862	893
Connecticut . . . . .	2,942	4,177	3,440	2,451	2,515	2,947
Middle Atlantic . . . . .	46,371	44,229	51,179	37,292	37,757	36,968
New York . . . . .	28,476	21,765	29,169	17,573	18,398	17,451
New Jersey . . . . .	4,162	8,493	7,723	6,843	6,840	6,148
Pennsylvania . . . . .	13,733	13,971	14,287	12,876	12,519	13,369
East North Central . . . . .	49,115	50,006	51,562	37,470	35,150	41,259
Ohio . . . . .	11,993	13,033	14,106	10,046	9,510	11,463
Indiana . . . . .	6,218	5,864	6,946	4,621	3,946	5,495
Illinois . . . . .	15,171	14,998	14,196	9,897	9,880	11,009
Michigan . . . . .	10,688	10,714	10,982	8,281	7,665	8,495
Wisconsin . . . . .	5,045	5,397	5,332	4,625	4,149	4,797
West North Central . . . . .	22,513	24,077	20,796	16,427	17,340	18,622
Minnesota . . . . .	5,109	5,015	5,292	3,765	3,604	3,853
Iowa . . . . .	3,015	2,703	2,434	2,880	2,882	2,338
Missouri . . . . .	7,166	7,678	7,825	5,049	6,169	6,943
North Dakota . . . . .	645	824	675	490	620	596
South Dakota . . . . .	523	764	786	334	582	681
Nebraska . . . . .	1,840	1,822	1,684	1,338	1,336	1,524
Kansas . . . . .	4,215	5,271	2,100	2,571	2,147	2,687
South Atlantic . . . . .	52,245	59,090	54,781	44,811	41,798	41,707
Delaware . . . . .	900	875	900	650	559	493
Maryland . . . . .	5,897	6,649	3,224	4,125	3,456	2,262
District of Columbia . . . . .	697	782	803	588	628	655
Virginia . . . . .	4,997	9,223	8,066	4,811	5,261	5,575
West Virginia . . . . .	1,841	2,042	1,964	1,928	1,600	2,170
North Carolina . . . . .	8,139	7,825	8,780	5,667	6,141	7,411
South Carolina . . . . .	4,252	4,470	4,723	4,026	2,801	3,006
Georgia . . . . .	10,420	11,123	9,852	6,478	5,968	4,905
Florida . . . . .	15,102	16,101	16,469	16,538	15,384	15,230
East South Central . . . . .	17,864	20,917	22,417	14,590	15,255	17,231
Kentucky . . . . .	4,737	4,651	4,349	4,037	3,620	3,885
Tennessee . . . . .	4,424	6,607	7,589	3,374	4,824	4,813
Alabama . . . . .	5,755	5,517	5,837	4,465	4,273	5,560
Mississippi . . . . .	2,948	4,142	4,642	2,714	2,538	2,973
West South Central . . . . .	32,888	45,140	42,327	21,108	24,255	27,521
Arkansas . . . . .	2,894	2,876	3,226	2,307	1,943	3,341
Louisiana . . . . .	6,881	7,438	5,454	4,241	4,045	3,527
Oklahoma . . . . .	4,690	3,635	5,659	3,324	3,162	3,680
Texas <sup>1</sup> . . . . .	18,423	31,191	27,988	11,236	15,105	16,973
Mountain . . . . .	22,521	20,836	18,865	10,928	9,257	9,743
Montana . . . . .	846	879	718	722	734	728
Idaho . . . . .	1,701	1,434	1,620	839	781	892
Wyoming . . . . .	506	571	373	305	347	341
Colorado . . . . .	4,239	4,421	4,424	2,632	2,293	2,570
New Mexico . . . . .	2,323	2,563	2,792	1,203	1,015	1,104
Arizona . . . . .	8,529	6,022	3,105	3,052	2,081	2,106
Utah . . . . .	2,600	3,019	3,599	959	948	929
Nevada . . . . .	1,777	1,927	2,234	1,216	1,058	1,073
Pacific . . . . .	59,324	64,072	70,511	27,892	28,420	19,718
Washington . . . . .	6,318	6,166	7,642	4,188	3,162	3,686
Oregon . . . . .	4,697	3,629	4,345	3,016	3,073	2,974
California <sup>1</sup> . . . . .	45,971	51,889	55,148	19,818	21,344	12,171
Alaska . . . . .	752	939	1,811	157	173	229
Hawaii . . . . .	1,586	1,449	1,565	713	668	658
Puerto Rico <sup>2</sup> . . . . .	5,659	4,976	---	2,295	2,438	---

--- Data not available.

<sup>1</sup>Figures include adjustments for varying lengths of reporting periods; see [Technical notes](#).

<sup>2</sup>Data for Puerto Rico are not included in U.S. total figures.

NOTES: Figures include all revisions received from the States. Cumulative figures for the current year reflect revisions received for previous months, and figures for earlier years may differ from those previously published.

**Table 3. Provisional number of marriages and divorces: Each division and State, January, 1994–96**[By State of occurrence. Number of events reported; see [Technical notes](#). Divorces include reported annulments]

Area	Marriages			Divorces		
	January			January		
	1996	1995	1994	1996	1995	1994
New England	3,890	4,670	6,352	3,872	2,641	2,716
Maine	594	298	315	150	493	145
New Hampshire	538	389	356	420	340	309
Vermont	223	332	290	302	315	377
Massachusetts	1,828	2,805	4,366	1,828	620	707
Rhode Island	222	203	242	260	254	295
Connecticut	485	643	783	912	619	883
Middle Atlantic	17,304	12,103	11,583	13,595	10,241	11,744
New York <sup>1</sup>	12,993	6,765	6,143	8,942	4,808	7,334
New Jersey	1,854	1,804	1,836	1,995	2,049	1,776
Pennsylvania	2,457	3,534	3,604	2,658	3,384	2,634
East North Central	10,886	14,586	14,046	<sup>2</sup> 9,040	<sup>2</sup> 12,077	<sup>2</sup> 10,658
Ohio	2,086	5,358	4,951	2,085	4,353	4,116
Indiana	1,734	2,145	1,729	---	---	---
Illinois	3,538	3,674	3,755	2,636	3,112	2,856
Michigan	1,708	1,764	1,931	2,920	3,038	2,289
Wisconsin	1,820	1,645	1,680	1,399	1,574	1,397
West North Central	8,617	8,988	7,851	6,702	6,225	5,841
Minnesota	1,321	1,316	1,020	1,175	1,151	1,449
Iowa	1,417	1,332	1,047	870	1,134	888
Missouri	4,031	3,667	3,188	2,174	2,702	2,218
North Dakota	254	210	207	193	165	178
South Dakota	224	400	356	224	270	188
Nebraska	511	670	545	545	504	513
Kansas	859	1,393	1,488	1,521	299	407
South Atlantic	28,050	26,990	28,226	14,104	18,008	17,846
Delaware	208	198	222	252	422	245
Maryland	2,228	1,883	2,566	894	1,214	1,307
District of Columbia	98	34	24	72	74	154
Virginia	2,229	4,279	4,135	1,629	2,371	2,246
West Virginia	645	565	727	371	775	732
North Carolina	4,456	3,292	2,383	2,270	2,685	2,483
South Carolina	2,506	2,476	3,323	1,195	1,070	1,227
Georgia	5,265	4,453	5,132	2,415	2,756	2,695
Florida	10,415	9,810	9,714	5,006	6,641	6,757
East South Central	13,069	14,895	11,552	8,856	7,715	7,406
Kentucky	2,530	4,339	3,010	1,868	2,188	1,491
Tennessee	5,800	6,811	3,980	3,259	2,670	3,079
Alabama	3,282	2,980	3,323	2,142	2,259	2,089
Mississippi	1,457	765	1,239	1,587	598	747
West South Central	22,860	26,848	23,359	<sup>2</sup> 13,275	<sup>2</sup> 11,996	<sup>2</sup> 13,637
Arkansas	1,583	1,005	1,668	697	518	878
Louisiana	3,470	2,891	3,310	---	---	---
Oklahoma	1,484	1,448	1,610	1,613	1,800	1,733
Texas <sup>3</sup>	16,323	21,504	16,771	10,965	9,678	11,026
Mountain	<sup>2</sup> 18,899	17,099	19,169	<sup>2</sup> 5,162	<sup>2</sup> 5,551	<sup>2</sup> 7,218
Montana	386	231	235	335	251	325
Idaho	1,102	1,327	1,437	658	616	515
Wyoming	139	142	151	203	273	229
Colorado	---	1,711	1,793	---	---	1,527
New Mexico <sup>4,5</sup>	1,022	749	648	1,049	766	718
Arizona <sup>1</sup>	3,318	2,443	3,220	2,021	2,026	2,023
Utah	1,375	1,865	1,344	536	700	831
Nevada	11,557	8,631	10,341	360	919	---
Pacific	11,992	18,058	16,477	<sup>2</sup> 4,305	<sup>2</sup> 4,749	<sup>2</sup> 4,559
Washington	2,318	2,668	2,484	2,725	2,685	2,576
Oregon	1,336	1,886	750	1,089	1,296	1,250
California	6,761	11,852	11,707	---	---	---
Alaska	354	361	425	194	247	419
Hawaii	1,223	1,291	1,111	297	521	314
Puerto Rico <sup>6</sup>	---	---	---	---	---	---

--- Data not available.

<sup>1</sup>Figures for marriages are marriage licenses issued for some counties.<sup>2</sup>Excludes figures for State(s) shown below as not available.<sup>3</sup>Figures include adjustments for varying lengths of reporting periods; see [Technical notes](#).<sup>4</sup>Figures for marriages are marriage licenses issued.<sup>5</sup>Figures for divorces include estimates for some counties.<sup>6</sup>Data for Puerto Rico are not included in U.S. total figures.

NOTES: Figures include all revisions received from the States. Cumulative figures for the current year reflect revisions received for previous months, and figures for earlier years may differ from those previously published.



**Table 4. Provisional number of deaths under 1 year and infant mortality rates: Each division and State, 12 months ending with January 1995 and 1996**

[Data are estimates by State of residence. Figures should be interpreted with caution because of conversion of place of occurrence to place of residence; see [Technical notes](#). Infant mortality rates are deaths under 1 year per 1,000 live births in specified area]

Area	12 months ending with January			
	1996		1995	
	Number	Rate	Number	Rate
New England . . . . .	949	5.8	1,010	5.7
Maine . . . . .	84	6.0	95	6.7
New Hampshire . . . . .	69	4.5	106	7.3
Vermont . . . . .	39	5.8	45	6.3
Massachusetts . . . . .	410	5.8	469	5.5
Rhode Island . . . . .	86	6.7	80	6.1
Connecticut . . . . .	261	5.9	215	5.0
Middle Atlantic . . . . .	3,991	7.6	4,334	7.9
New York . . . . .	2,056	7.6	2,204	8.1
New Jersey . . . . .	808	7.8	896	7.6
Pennsylvania . . . . .	1,127	7.4	1,234	7.9
East North Central . . . . .	5,333	8.5	5,603	8.7
Ohio . . . . .	1,298	8.4	1,410	8.8
Indiana . . . . .	768	9.1	765	9.3
Illinois . . . . .	1,646	8.9	1,689	8.9
Michigan . . . . .	1,122	8.5	1,200	8.6
Wisconsin . . . . .	499	7.5	539	7.8
West North Central . . . . .	1,822	7.2	1,966	7.7
Minnesota . . . . .	390	6.2	443	6.9
Iowa . . . . .	240	6.5	268	7.4
Missouri . . . . .	573	7.7	610	8.1
North Dakota . . . . .	47	5.5	54	6.1
South Dakota . . . . .	97	9.4	121	11.4
Nebraska . . . . .	184	7.9	184	7.9
Kansas . . . . .	291	8.1	286	7.8
South Atlantic . . . . .	5,602	8.6	5,952	8.9
Delaware . . . . .	71	7.1	78	7.5
Maryland . . . . .	610	8.5	675	9.0
District of Columbia . . . . .	<sup>1</sup> 154	---	193	20.0
Virginia . . . . .	668	7.8	763	7.9
West Virginia . . . . .	155	7.5	141	6.5
North Carolina . . . . .	936	9.1	1,017	10.1
South Carolina . . . . .	465	9.4	452	8.9
Georgia . . . . .	1,102	9.8	1,106	10.0
Florida . . . . .	1,441	7.7	1,527	8.0
East South Central . . . . .	2,102	9.5	2,167	9.4
Kentucky . . . . .	397	7.8	418	8.0
Tennessee . . . . .	686	9.6	699	9.4
Alabama . . . . .	628	10.2	610	10.1
Mississippi . . . . .	391	10.9	440	10.3
West South Central . . . . .	3,306	7.1	3,773	8.0
Arkansas . . . . .	280	8.1	291	8.5
Louisiana . . . . .	618	9.2	669	9.5
Oklahoma . . . . .	407	8.7	432	9.9
Texas <sup>2</sup> . . . . .	2,001	6.2	2,381	7.3
Mountain . . . . .	1,616	6.7	1,808	7.4
Montana . . . . .	80	7.1	101	9.0
Idaho . . . . .	101	5.6	125	7.3
Wyoming . . . . .	50	8.0	59	9.0
Colorado . . . . .	352	7.1	362	6.7
New Mexico . . . . .	180	6.7	250	9.0
Arizona . . . . .	524	7.4	553	8.0
Utah . . . . .	198	5.1	230	6.0
Nevada . . . . .	131	6.2	128	6.0
Pacific . . . . .	4,322	6.1	4,821	6.6
Washington . . . . .	333	4.3	445	5.7
Oregon . . . . .	263	6.0	288	6.9
California <sup>2</sup> . . . . .	3,545	6.4	3,886	6.7
Alaska . . . . .	68	6.9	76	6.8
Hawaii . . . . .	113	6.1	126	6.6
Puerto Rico <sup>3</sup> . . . . .	---	---	---	---

--- Data not available.

<sup>1</sup>Infant deaths are underreported.

<sup>2</sup>Figures include adjustments for varying lengths of reporting periods; see [Technical notes](#).

<sup>3</sup>Data for Puerto Rico are not included in U.S. total figures.

NOTES: Figures include all revisions received from the States. Figures for the current year reflect revisions received for previous months, and figures for earlier years may differ from those previously published.

**Table 5. Provisional number of deaths and death rates, by age, race, and sex, and age-adjusted death rates by race and sex: United States, December 1994 and 1995, and cumulative figures 1994 and 1995**

[Data are provisional, estimated from a 10-percent sample of deaths. Age-specific rates on an annual basis per 100,000 population in specified group; age-adjusted rates per 100,000 U.S. standard million population; see [Technical notes](#). Because of rounding of estimates, figures may not add to totals. For method of computation and information on standard errors of the estimates, see [Technical notes](#)]

Age, race, and sex	December				January–December			
	1995		1994		1995		1994	
	Number	Rate	Number	Rate	Number	Rate	Number	Rate
<b>All races, both sexes<sup>1</sup></b>								
All ages . . . . .	197,000	878.3	190,000	854.4	2,309,000	878.6	2,286,000	876.9
Under 1 year. . . . .					29,300	<sup>2</sup> 760.4	31,400	<sup>2</sup> 811.6
1–4 years . . . . .	} 3,710	75.6	3,840	78.6	6,740	42.8	7,180	45.3
5–14 years . . . . .					8,230	21.6	8,550	22.7
15–24 years . . . . .					2,660	87.1	3,140	102.9
25–34 years . . . . .	4,470	129.6	4,880	139.7	58,270	142.6	58,470	141.4
35–44 years . . . . .	8,730	239.9	7,790	218.2	102,640	241.5	100,430	241.1
45–54 years . . . . .	11,610	431.1	11,510	445.5	143,160	460.5	135,770	454.5
55–64 years . . . . .	19,580	1,086.9	19,170	1,071.9	234,440	1,109.3	239,780	1,140.8
65–74 years . . . . .	39,980	2,510.0	39,260	2,466.3	478,950	2,553.6	484,560	2,589.7
75–84 years . . . . .	55,200	5,767.5	54,900	5,865.7	651,570	5,844.7	644,820	5,902.2
85 years and over. . . . .	49,720	15,907.9	45,180	14,879.9	558,260	15,379.1	538,670	15,294.4
Not stated . . . . .	70	...	40	...	1,020	...	660	...
Age-adjusted rate <sup>3</sup> . . . . .	...	491.6	...	491.0	...	503.0	...	508.9
<b>All races, male<sup>1</sup></b>								
All ages. . . . .	98,370	898.8	95,520	881.1	1,171,770	913.3	1,166,580	918.0
Under 1 year. . . . .					16,320	<sup>2</sup> 828.0	17,730	<sup>2</sup> 895.0
1–4 years . . . . .	} 2,280	90.7	2,230	89.1	3,850	47.8	4,240	52.3
5–14 years . . . . .					5,020	25.7	5,040	26.2
15–24 years . . . . .					2,000	128.3	2,430	156.0
25–34 years . . . . .	3,260	189.1	3,610	206.6	42,380	207.6	42,660	206.3
35–44 years . . . . .	5,900	326.8	5,350	302.2	70,900	336.3	70,000	339.0
45–54 years . . . . .	7,690	584.4	7,190	569.7	90,800	597.9	85,510	586.0
55–64 years . . . . .	11,600	1,353.9	11,430	1,345.4	140,470	1,398.5	146,530	1,467.6
65–74 years . . . . .	22,810	3,217.2	21,890	3,099.3	273,990	3,286.8	277,160	3,343.3
75–84 years . . . . .	26,720	7,155.0	26,620	7,364.4	319,140	7,377.3	314,290	7,474.2
85 years and over. . . . .	16,080	18,310.3	14,750	17,419.2	181,800	17,911.3	175,370	17,894.9
Not stated . . . . .	30	...	20	...	650	...	420	...
Age-adjusted rate <sup>3</sup> . . . . .	...	628.9	...	625.9	...	646.0	...	657.3
<b>All races, female<sup>1</sup></b>								
All ages. . . . .	97,350	849.2	94,200	828.8	1,135,310	844.3	1,119,610	840.1
Under 1 year. . . . .					12,930	<sup>2</sup> 687.4	13,670	<sup>2</sup> 723.7
1–4 years . . . . .	} 1,430	59.7	1,610	67.5	2,890	37.6	2,940	38.0
5–14 years . . . . .					3,200	17.2	3,510	19.1
15–24 years . . . . .					650	43.5	710	47.5
25–34 years . . . . .	1,210	70.1	1,270	72.7	15,890	77.8	15,810	76.5
35–44 years . . . . .	2,830	154.3	2,450	136.1	31,750	148.2	30,430	144.8
45–54 years . . . . .	3,920	284.6	4,320	326.8	52,350	328.8	50,260	328.9
55–64 years . . . . .	7,980	844.8	7,740	824.4	93,970	847.3	93,250	845.1
65–74 years . . . . .	17,170	1,942.9	17,370	1,961.4	204,970	1,966.9	207,410	1,990.1
75–84 years . . . . .	28,480	4,880.3	28,280	4,923.5	332,430	4,872.2	330,530	4,918.6
85 years and over. . . . .	33,630	14,964.7	30,440	13,913.3	376,450	14,390.3	363,300	14,291.9
Not stated . . . . .	40	...	20	...	370	...	240	...
Age-adjusted rate <sup>3</sup> . . . . .	...	376.4	...	378.7	...	383.7	...	385.6
<b>White</b>								
All ages . . . . .	169,150	910.3	163,520	886.3	1,982,050	908.9	1,965,360	907.9
Under 1 year. . . . .					19,430	<sup>2</sup> 644.4	20,340	<sup>2</sup> 668.9
1–4 years . . . . .	} 2,650	68.2	2,510	64.8	4,640	37.3	4,750	37.8
5–14 years . . . . .					6,090	20.1	6,030	20.2
15–24 years . . . . .					1,900	78.1	2,070	84.8
25–34 years . . . . .	3,190	113.4	3,590	125.6	40,830	122.3	41,350	122.0
35–44 years . . . . .	6,370	210.2	5,620	188.9	72,970	206.1	71,440	205.6
45–54 years . . . . .	9,080	394.5	8,820	398.6	109,970	413.6	104,370	407.6
55–64 years . . . . .	15,910	1,022.7	15,620	1,009.2	190,140	1,041.1	195,870	1,075.7
65–74 years . . . . .	34,650	2,454.4	34,160	2,416.2	413,450	2,485.0	419,300	2,521.2
75–84 years . . . . .	49,480	5,701.0	49,620	5,845.9	585,680	5,794.2	580,400	5,856.7
85 years and over. . . . .	45,870	16,126.7	41,500	15,011.6	513,520	15,542.4	495,870	15,452.5
Not stated . . . . .	50	...	20	...	800	...	430	...
Age-adjusted rate <sup>3</sup> . . . . .	...	468.9	...	465.2	...	475.8	...	481.1

See footnotes at end of table.

**Table 5. Provisional number of deaths and death rates, by age, race, and sex, and age-adjusted death rates by race and sex: United States, December 1994 and 1995, and cumulative figures 1994 and 1995—Con.**

[Data are provisional, estimated from a 10-percent sample of deaths. Age-specific rates on an annual basis per 100,000 population in specified group; age-adjusted rates per 100,000 U.S. standard million population; see [Technical notes](#). Because of rounding of estimates, figures may not add to totals. For method of computation and information on standard errors of the estimates, see [Technical notes](#)]

Age, race, and sex	December				January–December			
	1995		1994		1995		1994	
	Number	Rate	Number	Rate	Number	Rate	Number	Rate
<b>White male</b>								
All ages . . . . .	84,480	926.4	81,350	899.1	996,060	931.2	990,760	933.5
Under 1 year . . . . .	} 1,630	81.8	1,470	73.9	11,000	<sup>2</sup> 711.5	11,340	<sup>2</sup> 726.9
1–4 years . . . . .					2,810	44.1	2,830	44.0
5–14 years . . . . .					3,700	23.8	3,510	22.9
15–24 years . . . . .					1,410	112.9	1,620	129.5
25–34 years . . . . .	2,380	167.6	2,620	181.4	30,300	179.8	30,630	179.0
35–44 years . . . . .	4,470	294.1	3,910	262.1	51,180	288.4	50,470	289.8
45–54 years . . . . .	6,130	539.3	5,570	510.0	70,380	536.1	66,250	524.3
55–64 years . . . . .	9,560	1,277.9	9,410	1,265.6	115,500	1,315.8	120,970	1,383.3
65–74 years . . . . .	19,950	3,151.3	19,220	3,042.5	238,160	3,197.2	241,540	3,256.1
75–84 years . . . . .	24,160	7,108.1	24,170	7,349.7	288,570	7,333.4	283,740	7,416.1
85 years and over . . . . .	14,760	18,606.7	13,340	17,452.0	165,420	18,059.0	160,040	18,083.6
Not stated . . . . .	20	...	20	...	540	...	290	...
Age-adjusted rate <sup>3</sup> . . . . .	...	601.6	...	591.5	...	610.5	...	619.7
<b>White female</b>								
All ages . . . . .	84,680	894.8	82,170	874.0	985,990	887.5	974,600	883.3
Under 1 year . . . . .	} 1,010	53.4	1,040	55.1	8,430	<sup>2</sup> 573.9	9,000	<sup>2</sup> 607.7
1–4 years . . . . .					1,830	30.2	1,920	31.4
5–14 years . . . . .					2,390	16.2	2,520	17.3
15–24 years . . . . .					500	42.2	450	37.9
25–34 years . . . . .	810	58.1	970	68.5	10,530	63.7	10,720	63.9
35–44 years . . . . .	1,900	125.7	1,710	115.2	21,790	123.5	20,970	120.9
45–54 years . . . . .	2,940	252.4	3,260	290.9	39,590	294.1	38,120	294.0
55–64 years . . . . .	6,350	786.3	6,210	772.2	74,640	786.8	74,900	791.4
65–74 years . . . . .	14,710	1,889.2	14,940	1,910.4	175,290	1,907.6	177,750	1,929.3
75–84 years . . . . .	25,320	4,795.3	25,450	4,894.7	297,110	4,813.1	296,650	4,875.9
85 years and over . . . . .	31,110	15,167.5	28,160	14,079.0	348,100	14,577.1	335,820	14,450.1
Not stated . . . . .	30	...	—	...	260	...	140	...
Age-adjusted rate <sup>3</sup> . . . . .	...	356.8	...	359.6	...	362.7	...	365.4
<b>Black</b>								
All ages . . . . .	23,510	830.0	22,620	809.8	287,040	865.9	283,510	867.7
Under 1 year . . . . .	} 970	126.5	1,180	155.0	8,940	<sup>2</sup> 1,428.1	9,850	<sup>2</sup> 1,591.3
1–4 years . . . . .					1,850	74.4	2,050	82.0
5–14 years . . . . .					1,770	30.0	2,040	35.2
15–24 years . . . . .					640	137.7	870	188.9
25–34 years . . . . .	1,180	256.9	1,100	237.8	15,850	292.4	15,150	277.7
35–44 years . . . . .	2,140	480.8	1,990	458.6	27,130	523.3	26,670	529.1
45–54 years . . . . .	2,320	822.5	2,350	879.5	29,540	912.3	27,890	905.8
55–64 years . . . . .	3,200	1,759.8	3,070	1,715.5	38,970	1,831.3	38,540	1,840.5
65–74 years . . . . .	4,650	3,369.2	4,410	3,231.1	57,670	3,570.9	57,850	3,615.6
75–84 years . . . . .	5,040	7,098.3	4,510	6,460.0	57,430	6,936.0	56,580	6,933.8
85 years and over . . . . .	3,350	14,137.5	3,140	13,642.4	39,080	14,262.8	37,340	14,143.9
Not stated . . . . .	20	...	20	...	200	...	210	...
Age-adjusted rate <sup>3</sup> . . . . .	...	725.8	...	719.8	...	767.7	...	774.5
<b>Black male</b>								
All ages . . . . .	12,240	910.8	12,110	914.1	154,160	980.5	154,290	996.0
Under 1 year . . . . .	} 580	149.2	660	170.9	4,760	<sup>2</sup> 1,496.9	5,760	<sup>2</sup> 1,834.4
1–4 years . . . . .					930	73.8	1,120	88.4
5–14 years . . . . .					1,140	38.1	1,250	42.5
15–24 years . . . . .					510	219.2	690	299.9
25–34 years . . . . .	830	381.7	840	383.9	11,020	430.0	10,610	411.2
35–44 years . . . . .	1,320	635.4	1,300	642.3	18,030	745.7	17,970	765.0
45–54 years . . . . .	1,450	1,134.4	1,450	1,197.2	18,360	1,250.7	17,190	1,232.3
55–64 years . . . . .	1,730	2,187.9	1,710	2,198.0	22,010	2,382.0	22,450	2,464.3
65–74 years . . . . .	2,480	4,306.8	2,320	4,089.2	31,150	4,635.4	31,420	4,724.8
75–84 years . . . . .	2,260	8,696.0	2,070	8,178.7	26,330	8,747.5	26,310	8,918.6
85 years and over . . . . .	1,080	15,698.9	1,080	16,096.4	13,500	17,088.6	12,640	16,631.6
Not stated . . . . .	10	...	—	...	100	...	120	...
Age-adjusted rate <sup>3</sup> . . . . .	...	936.0	...	947.1	...	1,015.2	...	1,036.7

See footnotes at end of table.

**Table 5. Provisional number of deaths and death rates, by age, race, and sex, and age-adjusted death rates by race and sex: United States, December 1994 and 1995, and cumulative figures 1994 and 1995—Con.**

[Data are provisional, estimated from a 10-percent sample of deaths. Age-specific rates on an annual basis per 100,000 population in specified group; age-adjusted rates per 100,000 U.S. standard million population; see [Technical notes](#). Because of rounding of estimates, figures may not add to totals. For method of computation and information on standard errors of the estimates, see [Technical notes](#)]

Age, race, and sex	December				January–December			
	1995		1994		1995		1994	
	Number	Rate	Number	Rate	Number	Rate	Number	Rate
Black female								
All ages . . . . .	11,260	756.4	10,520	716.3	132,880	762.5	129,220	752.1
Under 1 year . . . . .	} 380	100.6	520	138.6	4,180	<sup>2</sup> 1,357.1	4,090	<sup>2</sup> 1,341.0
1–4 years . . . . .					930	76.0	530	75.4
5–14 years . . . . .					630	21.7	790	27.6
15–24 years . . . . .					170	60.3	180	78.1
25–34 years . . . . .					350	144.7	260	106.6
35–44 years . . . . .	820	345.4	690	298.0	9,110	329.4	8,700	323.2
45–54 years . . . . .	870	564.1	900	616.1	11,180	631.6	10,700	635.4
55–64 years . . . . .	1,470	1,430.4	1,360	1,344.5	16,970	1,409.5	16,090	1,360.1
65–74 years . . . . .	2,170	2,698.0	2,090	2,620.7	26,520	2,812.3	26,440	2,827.8
75–84 years . . . . .	2,780	6,175.9	2,440	5,482.6	31,100	5,901.3	30,270	5,810.0
85 years and over . . . . .	2,270	13,498.7	2,060	12,632.7	25,580	13,117.9	24,700	13,138.3
Not stated . . . . .	10	...	20	...	100	...	90	...
Age-adjusted rate <sup>3</sup> . . . . .	...	561.7	...	542.7	...	576.7	...	571.3

... Category not applicable.

– Quantity zero.

<sup>1</sup>Includes races other than white and black.

<sup>2</sup>Death rates for “under 1 year” (based on population estimates) differ from infant mortality rates (based on live births); see [table 9](#) for infant mortality rates.

<sup>3</sup>For method of computation, see [Technical notes](#).

NOTES: Figures include all revisions received from the States. Cumulative figures for the current year reflect revisions received for previous months, and figures for earlier years may differ from those previously published.

**Table 6. Provisional number of deaths and death rates for 72 selected causes and Human immunodeficiency virus infection: United States, December 1994 and 1995, and cumulative figures 1994 and 1995**

[Data are provisional, estimated from a 10-percent sample of deaths. Rates on an annual basis per 100,000 estimated population. Because of rounding of estimates, figures may not add to totals. For method of computation and information on standard errors of the estimates, see [Technical notes](#). For explanation of asterisks preceding cause-of-death categories, see [Technical notes](#)]

Cause of death (Based on the Ninth Revision, International Classification of Diseases, 1975)	December				January–December			
	1995		1994		1995		1994	
	Number	Rate	Number	Rate	Number	Rate	Number	Rate
All causes . . . . .	197,000	878.3	190,000	854.4	2,309,000	878.6	2,286,000	876.9
Shigellosis and amebiasis . . . . .	—	*	—	*	—	*	10	*
Certain other intestinal infections. . . . .	50	*	50	*	640	0.2	750	0.3
Tuberculosis . . . . .	150	0.7	130	0.6	1,370	0.5	1,450	0.6
Tuberculosis of respiratory system . . . . .	120	0.5	100	*	1,070	0.4	1,090	0.4
Other tuberculosis . . . . .	30	*	30	*	300	0.1	360	0.1
Whooping cough. . . . .	—	*	—	*	10	*	20	*
Streptococcal sore throat, scarlatina, and erysipelas. . . . .	—	*	—	*	10	*	—	*
Meningococcal infection . . . . .	—	*	40	*	300	0.1	300	0.1
Septicemia . . . . .	1,680	7.5	1,570	7.1	21,200	8.1	19,900	7.6
Acute poliomyelitis. . . . .	—	*	—	*	—	*	—	*
Measles . . . . .	—	*	—	*	—	*	10	*
Viral hepatitis. . . . .	300	1.3	270	1.2	3,520	1.3	2,810	1.1
Syphilis . . . . .	—	*	—	*	130	0.0	100	*
All other infectious and parasitic diseases <sup>1</sup> . . . . .	3,650	16.3	3,910	17.6	49,010	18.7	46,780	17.9
Malignant neoplasms, including neoplasms of lymphatic and hematopoietic tissues . . . . .	44,240	197.4	44,140	198.8	536,440	204.1	538,560	206.6
Malignant neoplasms of lip, oral cavity, and pharynx . . . . .	620	2.8	610	2.7	7,980	3.0	7,750	3.0
Malignant neoplasms of digestive organs and peritoneum . . . . .	10,330	46.1	10,230	46.1	125,250	47.7	126,920	48.7
Malignant neoplasms of respiratory and intrathoracic organs . . . . .	12,930	57.7	12,750	57.4	154,940	59.0	153,970	59.1
Malignant neoplasm of breast . . . . .	3,650	16.3	3,850	17.3	44,010	16.7	44,120	16.9
Malignant neoplasms of genital organs . . . . .	4,960	22.1	5,110	23.0	60,800	23.1	61,950	23.8
Malignant neoplasms of urinary organs . . . . .	1,830	8.2	1,850	8.3	23,090	8.8	21,920	8.4
Malignant neoplasms of all other and unspecified sites. . . . .	5,330	23.8	5,130	23.1	65,590	25.0	67,480	25.9
Leukemia. . . . .	1,640	7.3	1,630	7.3	19,620	7.5	19,980	7.7
Other malignant neoplasms of lymphatic and hematopoietic tissues. . . . .	2,950	13.2	2,990	13.5	35,160	13.4	34,460	13.2
Benign neoplasms, carcinoma in situ, and neoplasms of uncertain behavior and of unspecified nature . . . . .	710	3.2	620	2.8	8,390	3.2	7,690	3.0
Diabetes mellitus . . . . .	4,730	21.1	4,850	21.8	58,330	22.2	55,270	21.2
Nutritional deficiencies . . . . .	410	1.8	220	1.0	3,830	1.5	3,200	1.2
Anemias. . . . .	440	2.0	360	1.6	4,290	1.6	4,150	1.6
Meningitis. . . . .	50	*	150	0.7	780	0.3	940	0.4
Major cardiovascular diseases . . . . .	81,750	364.8	77,990	351.2	942,510	358.7	939,180	360.3
Diseases of heart . . . . .	63,030	281.3	60,290	271.5	730,870	278.1	730,730	280.3
Rheumatic fever and rheumatic heart disease. . . . .	400	1.8	500	2.2	5,030	1.9	5,520	2.1
Hypertensive heart disease . . . . .	2,070	9.2	1,910	8.6	24,490	9.3	23,790	9.1
Hypertensive heart and renal disease . . . . .	220	1.0	250	1.1	2,340	0.9	2,190	0.8
Ischemic heart disease . . . . .	40,880	182.4	39,440	177.6	477,410	181.7	482,140	185.0
Acute myocardial infarction . . . . .	18,140	80.9	18,350	82.6	217,190	82.7	225,120	86.4
Other acute and subacute forms of ischemic heart disease . . . . .	270	1.2	270	1.2	2,590	1.0	2,680	1.0
Angina pectoris . . . . .	50	*	80	*	730	0.3	900	0.3
Old myocardial infarction and other forms of chronic ischemic heart disease . . . . .	22,410	100.0	20,740	93.4	256,890	97.8	253,430	97.2
Other diseases of endocardium. . . . .	1,530	6.8	1,310	5.9	15,530	5.9	14,490	5.6
All other forms of heart disease. . . . .	17,950	80.1	16,890	76.0	206,070	78.4	202,610	77.7
Hypertension with or without renal disease . . . . .	1,080	4.8	890	4.0	12,480	4.7	10,770	4.1
Cerebrovascular diseases . . . . .	13,710	61.2	13,460	60.6	156,760	59.7	153,940	59.1
Intracerebral and other intracranial hemorrhage. . . . .	1,980	8.8	1,840	8.3	21,700	8.3	21,100	8.1
Cerebral thrombosis and unspecified occlusion of cerebral arteries. . . . .	1,160	5.2	1,240	5.6	13,400	5.1	14,980	5.7
Cerebral embolism . . . . .	60	*	100	*	640	0.2	920	0.4

See footnotes at end of table.

**Table 6. Provisional number of deaths and death rates for 72 selected causes and Human immunodeficiency virus infection: United States, December 1994 and 1995, and cumulative figures 1994 and 1995—Con.**

[Data are provisional, estimated from a 10-percent sample of deaths. Rates on an annual basis per 100,000 estimated population. Because of rounding of estimates, figures may not add to totals. For method of computation and information on standard errors of the estimates, see [Technical notes](#). For explanation of asterisks preceding cause-of-death categories, see [Technical notes](#)]

Cause of death (Based on the Ninth Revision, International Classification of Diseases, 1975)	December				January–December			
	1995		1994		1995		1994	
	Number	Rate	Number	Rate	Number	Rate	Number	Rate
All other and late effects of cerebrovascular diseases . . . . .430,433,435–438	10,510	46.9	10,280	46.3	121,010	46.1	116,930	44.9
Atherosclerosis . . . . .440	1,610	7.2	1,380	6.2	16,400	6.2	17,410	6.7
Other diseases of arteries, arterioles, and capillaries . . . . .441–448	2,320	10.3	1,970	8.9	26,010	9.9	26,330	10.1
Acute bronchitis and bronchiolitis . . . . .466	20	*	30	*	540	0.2	530	0.2
Pneumonia and influenza . . . . .480–487	7,200	32.1	6,660	30.0	80,170	30.5	81,820	31.4
Pneumonia. . . . .480–486	7,170	32.0	6,660	30.0	79,690	30.3	80,580	30.9
Influenza . . . . .487	30	*	—	*	480	0.2	1,250	0.5
Chronic obstructive pulmonary diseases and allied conditions. . . . .490–496	8,470	37.8	7,860	35.4	103,550	39.4	101,170	38.8
Bronchitis, chronic and unspecified . . . . .490–491	250	1.1	380	1.7	2,970	1.1	3,610	1.4
Emphysema . . . . .492	1,250	5.6	1,350	6.1	17,420	6.6	17,220	6.6
Asthma . . . . .493	470	2.1	310	1.4	5,510	2.1	5,220	2.0
Other chronic obstructive pulmonary diseases and allied conditions. . . . .494–496	6,510	29.0	5,830	26.2	77,640	29.5	75,120	28.8
Ulcer of stomach and duodenum. . . . .531–533	440	2.0	390	1.8	5,890	2.2	6,020	2.3
Appendicitis. . . . .540–543	10	*	30	*	400	0.2	320	0.1
Hernia of abdominal cavity and intestinal obstruction without mention of hernia. . . . .550–553,560	440	2.0	540	2.4	5,960	2.3	5,960	2.3
Chronic liver disease and cirrhosis. . . . .571	1,910	8.5	2,470	11.1	25,090	9.5	25,660	9.8
Cholelithiasis and other disorders of gallbladder . . . . .574–575	260	1.2	240	1.1	2,690	1.0	2,600	1.0
Nephritis and nephrotic syndrome, and nephrosis . . . . .580–589	2,370	10.6	2,200	9.9	25,630	9.8	24,690	9.5
Acute glomerulonephritis and nephrotic syndrome. . . . .580–581	20	*	10	*	280	0.1	240	0.1
Chronic glomerulonephritis, nephritis and nephropathy, not specified as acute or chronic, and renal sclerosis, unspecified . . . . .582–583,587	150	0.7	140	0.6	1,340	0.5	1,600	0.6
Renal failure, disorders resulting from impaired renal function, and small kidney of unknown cause . . . . .584–586,588–589	2,200	9.8	2,050	9.2	24,010	9.1	22,850	8.8
Infections of kidney . . . . .590	40	*	60	*	730	0.3	1,030	0.4
Hyperplasia of prostate. . . . .600	40	*	20	*	430	0.2	400	0.2
Complications of pregnancy, childbirth, and the puerperium . . . . .630–676	20	*	—	*	320	0.1	340	0.1
Pregnancy with abortive outcome . . . . .630–638	—	*	—	*	20	*	60	*
Other complications of pregnancy, childbirth, and the puerperium . . . . .640–676	20	*	—	*	300	0.1	280	0.1
Congenital anomalies. . . . .740–759	1,010	4.5	1,020	4.6	11,550	4.4	11,570	4.4
Certain conditions originating in the perinatal period. . . . .760–779	1,030	4.6	1,260	5.7	13,410	5.1	14,180	5.4
Birth trauma, intrauterine hypoxia, birth asphyxia, and respiratory distress syndrome . . . . .767–769	150	0.7	160	0.7	1,980	0.8	2,380	0.9
Other conditions originating in the perinatal period . . . . .760–766,770–779	890	4.0	1,100	4.9	11,420	4.3	11,790	4.5
Symptoms, signs, and ill-defined conditions . . . . .780–799	3,800	17.0	3,050	13.7	42,220	16.1	40,240	15.4
All other diseases . . . . .Residual	19,160	85.5	17,580	79.2	213,450	81.2	203,470	78.1
Accidents and adverse effects . . . . .E800–E949	7,270	32.4	7,420	33.4	89,800	34.2	88,370	33.9
Motor vehicle accidents . . . . .E810–E825	3,460	15.4	3,620	16.3	43,780	16.7	42,050	16.1
All other accidents and adverse effects . . . . .E800–E807,E826–E949	3,810	17.0	3,810	17.2	46,020	17.5	46,330	17.8
Suicide. . . . .E950–E959	2,090	9.3	2,610	11.8	29,830	11.4	30,570	11.7
Homicide and legal intervention . . . . .E960–E978	1,810	8.1	1,760	7.9	22,380	8.5	23,680	9.1
All other external causes. . . . .E980–E999	190	0.8	240	1.1	2,280	0.9	2,450	0.9
Human immunodeficiency virus infection <sup>2</sup> . . . . .*042–*044	3,110	13.9	3,440	15.5	42,370	16.1	40,310	15.5

— Quantity zero.

\* Figure does not meet standards of reliability or precision (see [Technical notes](#)).

0.0 Quantity more than zero but less than 0.05.

<sup>1</sup>Includes data for deaths due to Human immunodeficiency virus infection (categories \*042–\*044) shown separately below; see [Technical notes](#).

<sup>2</sup>Included in All other infectious and parasitic diseases shown above.

NOTES: Figures include all revisions received from the States. Cumulative figures for the current year reflect revisions received for previous months, and figures for earlier years may differ from those previously published.

**Table 7. Provisional number of deaths and death rates for 16 selected subcategories of Malignant neoplasms, including neoplasms of lymphatic and hematopoietic tissues: United States, December 1994 and 1995 and cumulative figures 1994 and 1995**

[Data are provisional, estimated from a 10-percent sample of deaths. Rates on an annual basis per 100,000 estimated population. Because of rounding of estimates, figures may not add to totals. For method of computation and information on standard errors of the estimates, see [Technical notes](#)]

Cause of death (Based on the Ninth Revision, International Classification of Diseases, 1975)	December				January–December			
	1995		1994		1995		1994	
	Number	Rate	Number	Rate	Number	Rate	Number	Rate
Malignant neoplasms, including neoplasms of lymphatic and hematopoietic tissues <sup>1</sup> . . . . .140–208	44,240	197.4	44,140	198.8	536,440	204.1	538,560	206.6
Malignant neoplasm of esophagus . . . . .150	760	3.4	830	3.7	10,360	3.9	11,170	4.3
Malignant neoplasm of stomach . . . . .151	1,040	4.6	1,120	5.0	13,810	5.3	13,620	5.2
Malignant neoplasms of colon, rectum, rectosigmoid junction, and anus . . . . .153,154	4,440	19.8	4,710	21.2	55,830	21.2	58,640	22.5
Malignant neoplasm of pancreas . . . . .157	2,390	10.7	2,200	9.9	27,380	10.4	26,750	10.3
Malignant neoplasms of trachea, bronchus, and lung . . . . .162	12,490	55.7	12,260	55.2	149,650	56.9	148,710	57.1
Malignant melanoma of skin . . . . .172	470	2.1	470	2.1	7,030	2.7	7,130	2.7
Malignant neoplasm of cervix uteri . . . . .180	420	1.9	380	1.7	4,770	1.8	4,590	1.8
Malignant neoplasms of body of uterus and of uterus, part unspecified . . . . .179,182	540	2.4	440	2.0	6,110	2.3	5,880	2.3
Malignant neoplasm of ovary . . . . .183.0	1,150	5.1	1,170	5.3	13,590	5.2	13,680	5.2
Malignant neoplasm of prostate . . . . .185	2,660	11.9	2,950	13.3	34,540	13.1	35,730	13.7
Malignant neoplasm of bladder . . . . .188	880	3.9	870	3.9	11,540	4.4	10,650	4.1
Malignant neoplasms of kidney and other and unspecified urinary organs . . . . .189	950	4.2	980	4.4	11,550	4.4	11,280	4.3
Malignant neoplasms of brain and other and unspecified parts of nervous system . . . . .191,192	1,000	4.5	1,060	4.8	11,540	4.4	12,140	4.7
Hodgkin's disease . . . . .201	100	*	130	0.6	1,530	0.6	1,520	0.6
Malignant lymphoma other than Hodgkin's disease . . . . .200,202	1,930	8.6	1,970	8.9	23,260	8.9	22,560	8.7
Multiple myeloma and other immunoproliferative neoplasms . . . . .203	920	4.1	890	4.0	10,360	3.9	10,380	4.0

\* Figure does not meet standards of reliability or precision; see [Technical notes](#).

<sup>1</sup>Includes figures for subcategories not shown below.

NOTES: Figures include all revisions received from the States. Cumulative figures for the current year reflect revisions received for previous months, and figures for earlier years may differ from those previously published.

**Table 8. Provisional number of deaths and death rates for firearm mortality: United States, December 1994 and 1995 and cumulative figures 1994 and 1995**

[Data are provisional, estimated from a 10-percent sample of deaths. Rates on an annual basis per 100,000 estimated population. Because of rounding of estimates, figures may not add to totals. For method of computation and information on standard errors of the estimates, see [Technical notes](#)]

Cause of death (Based on the Ninth Revision, International Classification of Diseases, 1975)	December				January–December			
	1995		1994		1995		1994	
	Number	Rate	Number	Rate	Number	Rate	Number	Rate
Injury by firearms. . . . .E922,E955.0–E955.4,E965.0–965.4,E970,E985.0–E985.4	2,930	13.1	2,900	13.1	35,550	13.5	38,360	14.7
Accident caused by firearm missile . . . . .E922	200	0.9	190	0.8	1,370	0.5	1,550	0.6
Suicide by firearms . . . . .E955.0–E955.4	1,310	5.8	1,380	6.2	17,980	6.8	19,380	7.4
Homicide and legal intervention by firearms. . . . .E965.0–E965.4,E970	1,410	6.3	1,280	5.8	15,950	6.1	17,140	6.6
Injury by firearms, undetermined whether accidentally or purposely inflicted. . . . .E985.0–E985.4	20	*	50	*	250	0.1	290	0.1

\* Figure does not meet standards of reliability or precision; see [Technical notes](#).

NOTES: Figures include all revisions received from the States. Cumulative figures for the current year reflect revisions received for previous months, and figures for earlier years may differ from those previously published.

**Table 9. Provisional number of deaths under 1 year and infant mortality rates, by age and for 10 selected causes: United States, December 1994 and 1995 and cumulative figures 1994 and 1995**

[Data are provisional, estimated from a 10-percent sample of deaths. Rates on an annual basis per 100,000 live births. Because of rounding of estimates, figures may not add to totals. For method of computation and information on standard errors of the estimates, see [Technical notes](#)]

<i>Age and cause of death (Based on the Ninth Revision, International Classification of Diseases, 1975)</i>	<i>December</i>				<i>January–December</i>			
	<i>1995</i>		<i>1994</i>		<i>1995</i>		<i>1994</i>	
	<i>Number</i>	<i>Rate</i>	<i>Number</i>	<i>Rate</i>	<i>Number</i>	<i>Rate</i>	<i>Number</i>	<i>Rate</i>
Total, under 1 year . . . . .	2,400	772.9	2,500	774.3	29,300	755.6	31,400	791.7
Under 28 days . . . . .	1,520	483.0	1,670	511.8	18,670	481.4	19,650	495.6
28 days–11 months . . . . .	910	289.2	850	260.5	10,580	272.8	11,740	296.1
Certain gastrointestinal diseases. . . . .008–009,535,555–558	10	*	10	*	190	4.9	250	6.3
Pneumonia and influenza. . . . .480–487	40	*	50	*	360	9.3	440	11.1
Congenital anomalies . . . . .740–759	440	139.8	570	174.7	6,170	159.1	6,780	171.0
Disorders relating to short gestation and unspecified low birthweight . . . . .765	230	73.1	360	110.3	3,560	91.8	3,860	97.3
Birth trauma . . . . .767	30	*	20	*	190	4.9	220	5.5
Intrauterine hypoxia and birth asphyxia . . . . .768	10	*	40	*	470	12.1	560	14.1
Respiratory distress syndrome. . . . .769	100	*	90	*	1,220	31.5	1,560	39.3
Other conditions originating in the perinatal period. . . . .760–764,766,770–779	660	209.7	710	217.6	7,750	199.8	7,720	194.7
Sudden infant death syndrome . . . . .798.0	300	95.3	210	64.4	2,910	75.0	3,610	91.0
All other causes . . . . .Residual	620	197.0	470	144.0	6,440	166.0	6,390	161.2

\* Figure does not meet standards of reliability or precision (see [Technical notes](#)).

NOTES: Figures include all revisions received from the States. Cumulative figures for the current year reflect revisions received for previous months, and figures for earlier years may differ from those previously published.



## Technical notes

### Nature and sources of data

Data in this report are provisional unless otherwise specified and include only events occurring within the United States (50 States and the District of Columbia). Mortality data exclude fetal deaths. Data for the Commonwealth of Puerto Rico are not included in the U.S. totals.

Birth, death, and infant death figures in tables 2 and 4 for each State are estimates by State of residence. These estimates are derived by applying adjustment ratios to the actual counts of certificates for all events occurring in the State and received in registration offices during a 1-month period regardless of date of the event. The adjustment ratios for each data year represent the observed relationship between final State occurrence and residence figures for the three most recent years for which final data were available and are expressed as a single ratio for each State. As in previous years, monthly State marriage and divorce figures represent the actual count of all events occurring in the State (State of occurrence) that were received in the registration offices during the 1-month period. Delay in the receipt of certificates in a registration office may result in a low State figure for a given month followed by a high figure for the month(s) in which the delayed records are received. Data for previous months and cumulative data include revised figures received from the States.

Figures for births, deaths, and infant deaths for California in tables 2 and 4 contain adjustments for varying lengths of State reporting periods. Figures for Texas for all events shown in tables 2–4 also are adjusted for varying lengths of State reporting periods. The figures for both States are adjusted by the ratio between the number of days in the data month and the number of days in the State reporting period. The adjusted figures are included in the U.S. totals shown elsewhere in this report.

U.S. totals for births, deaths, and infant deaths are based on the State estimates by State of residence and, therefore, in effect, exclude events to nonresidents of the United States. Events to nonresidents of the United States are

included in all marriage and divorce figures. The effect of excluding events to nonresidents from the U.S. totals is small.

Provisional totals for the United States include estimates for State data shown as not available. Provisional totals for births and marriages for the entire United States include adjustments for observed differences between provisional and final monthly figures.

Divorce figures include reported annulments. The monthly national divorce estimate is obtained by multiplying the total for the reporting areas by the ratio observed between the most recent final annual divorce total for the United States and the provisional total for the reporting areas combined.

*Random variation*—Although the counts in this report are not subject to sampling variability (except the Current Mortality Sample), they may be affected by random variation. When the number of events is small and the probability of such an event is small, considerable caution must be observed in interpreting the data. Such infrequent events may be assumed to follow a Poisson probability distribution. For this distribution a simple approximation may be used to estimate the random variation as follows:

If  $N$  is the number of events in the population and  $R$  is the corresponding rate, the chances are 19 in 20 that

$$1. N - 2\sqrt{N} \text{ and } N + 2\sqrt{N}$$

covers the “true” number of events.

$$2. R - 2 \frac{R}{\sqrt{N}} \text{ and } R + 2 \frac{R}{\sqrt{N}}$$

covers the “true” rate.

If the rate  $R_1$  corresponding to  $N_1$  events is compared with the rate  $R_2$  corresponding to  $N_2$  events, the difference between the two rates may be regarded as statistically significant at the 0.05 level if it exceeds

$$2 \sqrt{\frac{R_1^2}{N_1} + \frac{R_2^2}{N_2}}$$

Additional information on random variation in numbers of events, rates, and ratios may be found in the technical appendixes of *Vital Statistics of the United States, 1990, Volumes I and II*.

### Rates

Rates are on an annual basis and, except for infant mortality rates, are per 1,000 or 100,000 estimated population residing in the United States. The populations used for computing these rates are furnished by the U.S. Bureau of the Census. Rates shown in this report beginning with 1992 were computed using populations based on the 1990 Census enumeration comparable to those used for final data. Monthly rates are based on populations estimated for the specific month. Year-to-date rates are averages of monthly rates that have been weighted by the number of days in the corresponding months. Rates for 12-month periods are the sum of events for the period per population estimated at the midpoint of the period.

Infant mortality rates are deaths under 1 year of age for the specified period (monthly, year-to-date, or 12-month period) per 1,000 or 100,000 live births. Births used for computing monthly and year-to-date infant mortality rates are adjusted for monthly variation in the number of births. Births used to compute 12-month rates do not contain this adjustment. Births used for computing infant mortality rates are not corrected for observed differences between provisional and final monthly figures as described earlier in “Nature and sources of data.” Because monthly infant mortality rates are based on relatively few events, they are highly variable. Therefore, comparisons of monthly infant mortality rates should be interpreted cautiously; see “Random variation.”

Age-adjusted death rates are used to compare relative mortality risks across groups and over time. However, they should be viewed as constructs or indexes rather than as direct or actual measures of mortality risk. Statistically, they are weighted averages of the age-specific death rates, where the weights represent the fixed population proportions by age. See chapter 5 of an earlier report (1). The age-adjusted death rates presented in this report were computed by the direct method, that is, by applying age-specific death rates to the U.S. standard million population (2). See also chapter 10 of an earlier report (1). Age groups in table 5 were used to compute the age-adjusted

rates shown in that table. It is important not to compare age-adjusted rates with crude rates.

**Current Mortality Sample**

The Current Mortality Sample (CMS) is a 10-percent systematic sample of death certificates drawn each month after the certificates are counted in the State registration offices. Deaths and death rates for the United States by age, race, sex, and cause are estimated based on the sample. Because of the additional time required to select and process the certificates, data based on the CMS are published 1 month after publication of the U.S. and State counts. Complete information concerning the underlying cause of death sometimes is not available when the sample is drawn. As a result estimates based on sample counts for certain causes are biased. Correction for bias is not made in this report.

Estimated numbers of deaths based on the sample were proportionately adjusted to be consistent with estimates based on the count of death certificates received in State registration offices.

*HIV infection*—Beginning with data for 1987, the National Center for Health Statistics introduced categories \*042–\*044 for classifying and coding Human immunodeficiency virus (HIV) infection. The asterisks before the categories indicate that these codes are not part of the

*Ninth Revision, International Classification of Diseases*. Deaths classified to these categories are included in All other infectious and parasitic diseases in the List of 72 Selected Causes of Death and are also shown separately at the bottom of table 6.

*Sampling variability*—Because the estimates of deaths and death rates presented in this report with the exception of total deaths and deaths under 1 year are based on a sample of death certificates, they are subject to sampling variability. The estimated relative standard error in the following table is a measure of the

**Relative standard errors for estimated numbers of deaths from the Current Mortality Sample expressed as a percent of the estimate**

Estimated number of deaths	Relative standard error of estimate (as percent)	
	170,000 estimated deaths each month	2,000,000 estimated deaths each year
10 . . . . .	94.9	94.9
20 . . . . .	67.1	67.1
50 . . . . .	42.4	42.4
100 . . . . .	30.0	30.0
200 . . . . .	21.2	21.2
500 . . . . .	13.4	13.4
1,000 . . . . .	9.5	9.5
2,000 . . . . .	6.7	6.7
5,000 . . . . .	4.2	4.2
10,000 . . . . .	2.9	3.0
20,000 . . . . .	2.0	2.1
50,000 . . . . .	1.1	1.3
100,000 . . . . .	0.6	0.9
200,000 . . . . .	...	0.6
500,000 . . . . .	...	0.4
1,000,000 . . . . .	...	0.2

sampling error of the estimated number of deaths (or of the estimated death rate) expressed as a percent of the estimate. The first column refers to monthly estimates; the second to annual; cumulative year-to-date totals fall between the two.

The chances are about 2 in 3 that the percent difference between an estimate and the result of a complete count is less than the percent shown. The chances are about 19 in 20 that the percent difference is less than twice the percent shown. A figure based on 100 or fewer estimated deaths has a relative standard error of 30 percent or more and is, therefore, considered unreliable. A rate based on 100 or fewer estimated deaths has been replaced by an asterisk.

Unless otherwise specified comparisons made in the text between death rates based on the CMS were statistically significant at the 0.05 level of significance. Lack of comment in the text about any two rates does not mean that the difference was tested and found not to be significant at this level.

**References**

1. Feinleib M, Zarate AO, eds. Reconsidering age adjustment procedures: Workshop proceedings. National Center for Health Statistics. Vital Health Stat 4(29). 1992.
2. Grove RD, Hetzel AM. Vital statistics rates in the United States, 1940–1960. Public Health Service. Washington: National Center for Health Statistics. 1968.

---

**Suggested citation**

National Center for Health Statistics. Births, marriages, divorces, and deaths for January 1996. Monthly vital statistics report; vol 45 no 1. Hyattsville, Maryland: Public Health Service. 1996.

---

**Copyright information**

All material appearing in this report is in the public domain and may be reproduced or copied without permission; citation as to source, however, is appreciated.

---

**National Center for Health Statistics**

Director  
Edward J. Sondik, Ph.D.

Deputy Director  
Jack R. Anderson

**Division of Vital Statistics**

Director  
Mary Anne Freedman

---

**DEPARTMENT OF  
HEALTH & HUMAN SERVICES**

Public Health Service  
Centers for Disease Control and Prevention  
National Center for Health Statistics  
6525 Belcrest Road  
Hyattsville, Maryland 20782

FIRST CLASS MAIL POSTAGE & FEES PAID PHS/NCHS PERMIT NO. G-281
---

---

OFFICIAL BUSINESS  
PENALTY FOR PRIVATE USE, \$300

---

To receive this publication regularly, contact the National Center for Health Statistics by calling 301-436-8500  
E-mail: [nchsquery@nch10a.em.cdc.gov](mailto:nchsquery@nch10a.em.cdc.gov)  
Internet: <http://www.cdc.gov/nchswwww/nchshome.htm>

---

DHHS Publication No. (PHS) 96-1120  
6-0574 (8/96)