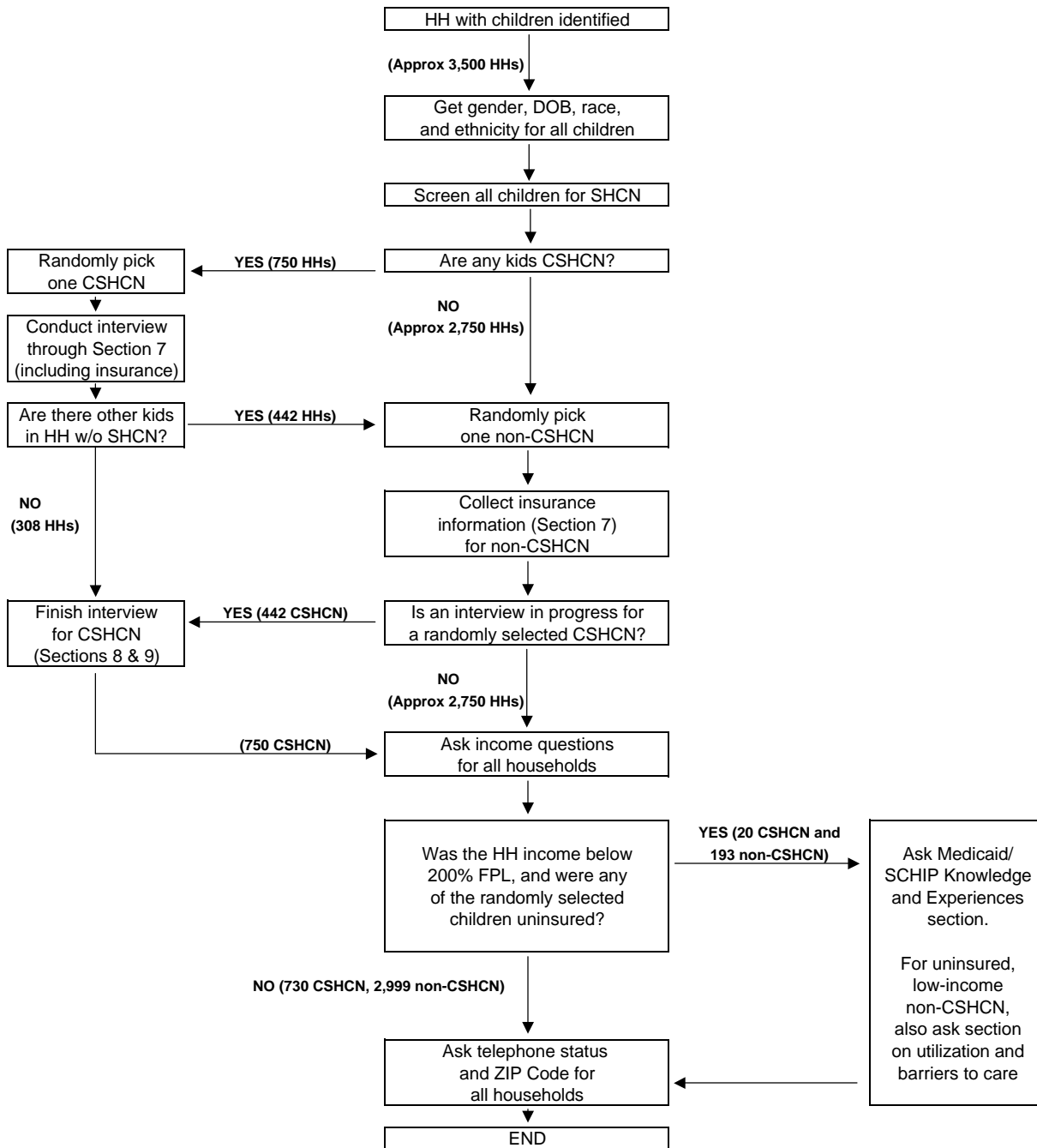




**State and Local Area Integrated Telephone Survey
Survey of Children with Special Health Care Needs
Anticipated Approximate FINAL Sample for an Average State
Based on First Three Months of Interviewing (Fall 2000)**



**Anticipated Approximate Final Sample Sizes
for an Average State after 12 Months:**

308 HHs with 1 sampled CSHCN
2,750 HHs with 1 sampled non-CSHCN
442 HHs with 2 sampled children (1 CSHCN, 1 non-CSHCN)

750 long interviews with CSHCN
3,192 health insurance interviews with non-CSHCN
213 Medicaid/SCHIP interviews with eligible but uninsured children