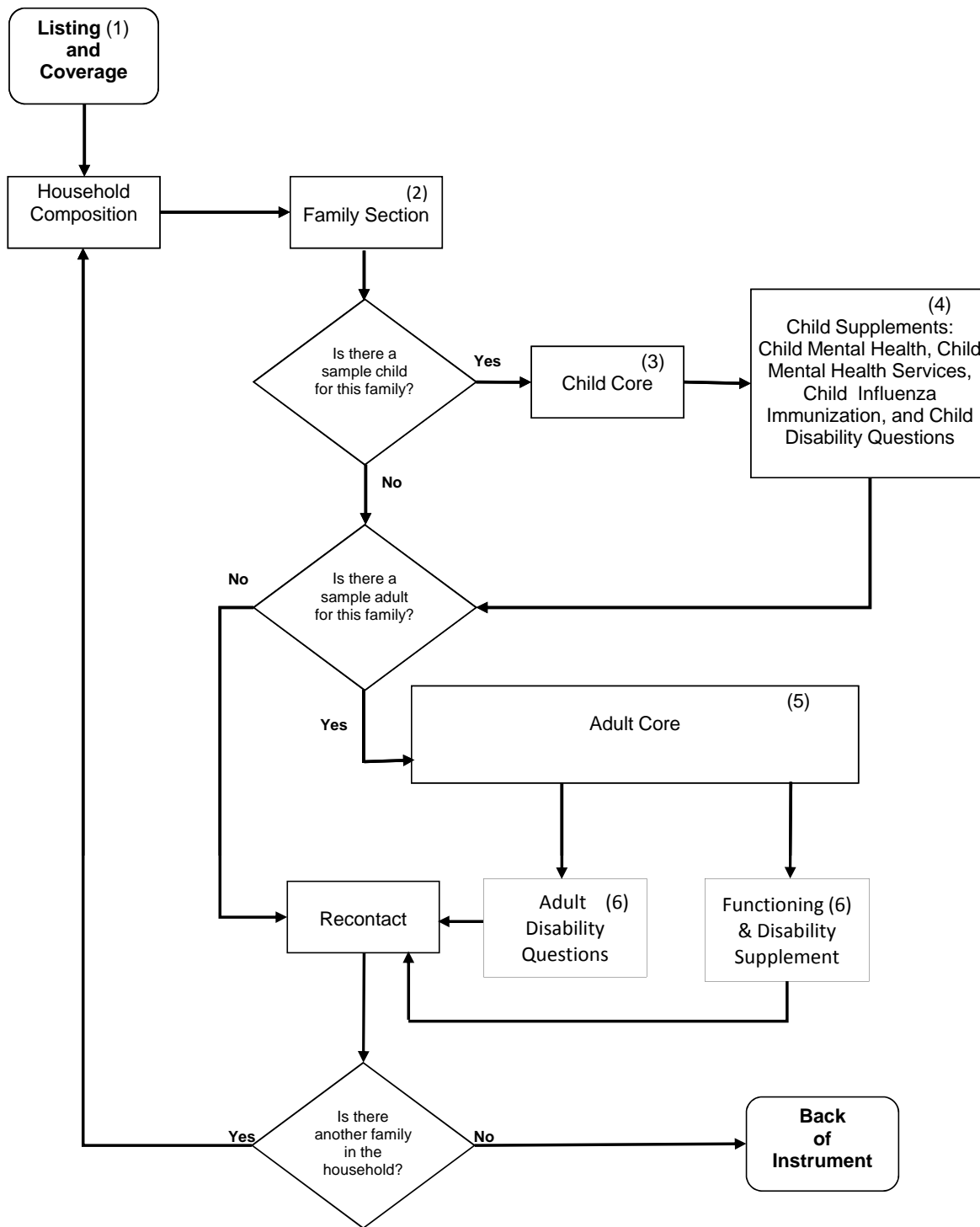


Flowchart of the 2011 NHIS Questionnaire Components



(1) NHIS over sampled households with Blacks, Asians, and Hispanics in some states.

(2) Additional Family Core supplements in 2011 are Family Food Security questions after the FHS section (see SDD for details), Veteran Status questions in the FSD section, new Health Care questions in the FHI section, and Family Disability Questions (FDB) at the end of the Family Core sections.

(3) 2011 Child Core includes new Health Care Access and Utilization questions in the CAU section.

(4) 2011 Child Supplements include Child Mental Health Supplement questions, Child Mental Health Services questions, Child Influenza Immunization H1N1 questions in the CFI section, and Child Disability Questions (CDB) at the end of the Child Core.

(5) 2011 Adult Core includes Fitness Center Use questions in the AHB section, Adult Immunization Supplement and new Health Care questions in the Adult Health Care Access and Utilization (AAU) section. AIDS Knowledge section (ADS) is deleted in 2011.

(6) Additional supplements in 2011 are Adult Disability Questions (ADB) and Functioning & Disability Supplement (AFD) at the end of the Sample Adult Core.