

## MMDS 2010 Installation Instructions

The Installation files for the MMDS2010 software can be located at the NCHS web site at this link: <http://www.cdc.gov/nchs/about/major/dvs/medsof.htm> .

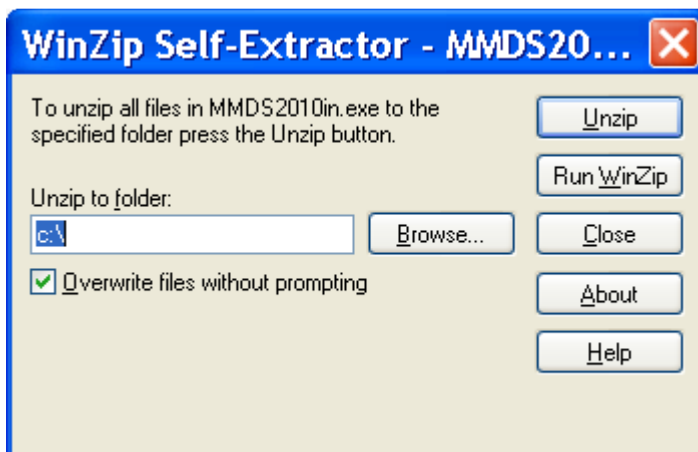
Click on the 2010 link and you will see two files:

MMDS2010in.exe – the file to copy the install program to your PC

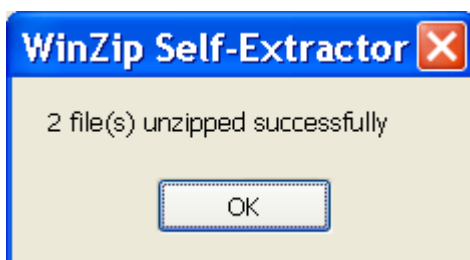
Install Docs 2010.PDF – This document.

## Copying the Install Files to Your PC

Double-click on the MMDS2010in.exe. This will momentarily bring up an extractor box that looks like this:



Click on UNZIP and the files will be copied to c:\MMDS2010\INSTALL.



When this box appears, click OK then click close.

## Running the Installer

Using My Computer or Windows Explorer, go to c:\MMDS2010\INTSALL.

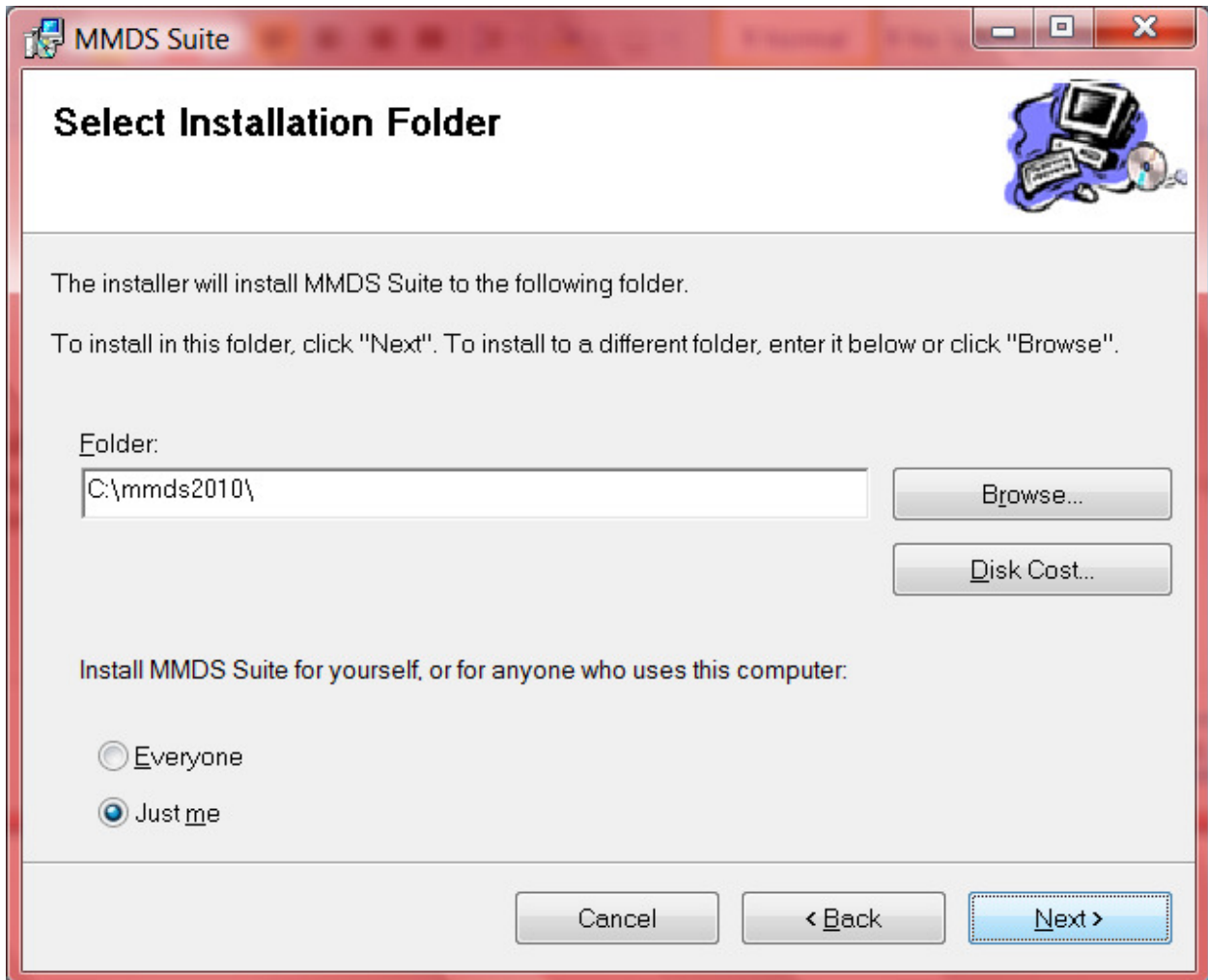
There you will find two files:

- MMDS Suite.MSL
- Setup.exe

Double-Click on setup.exe.

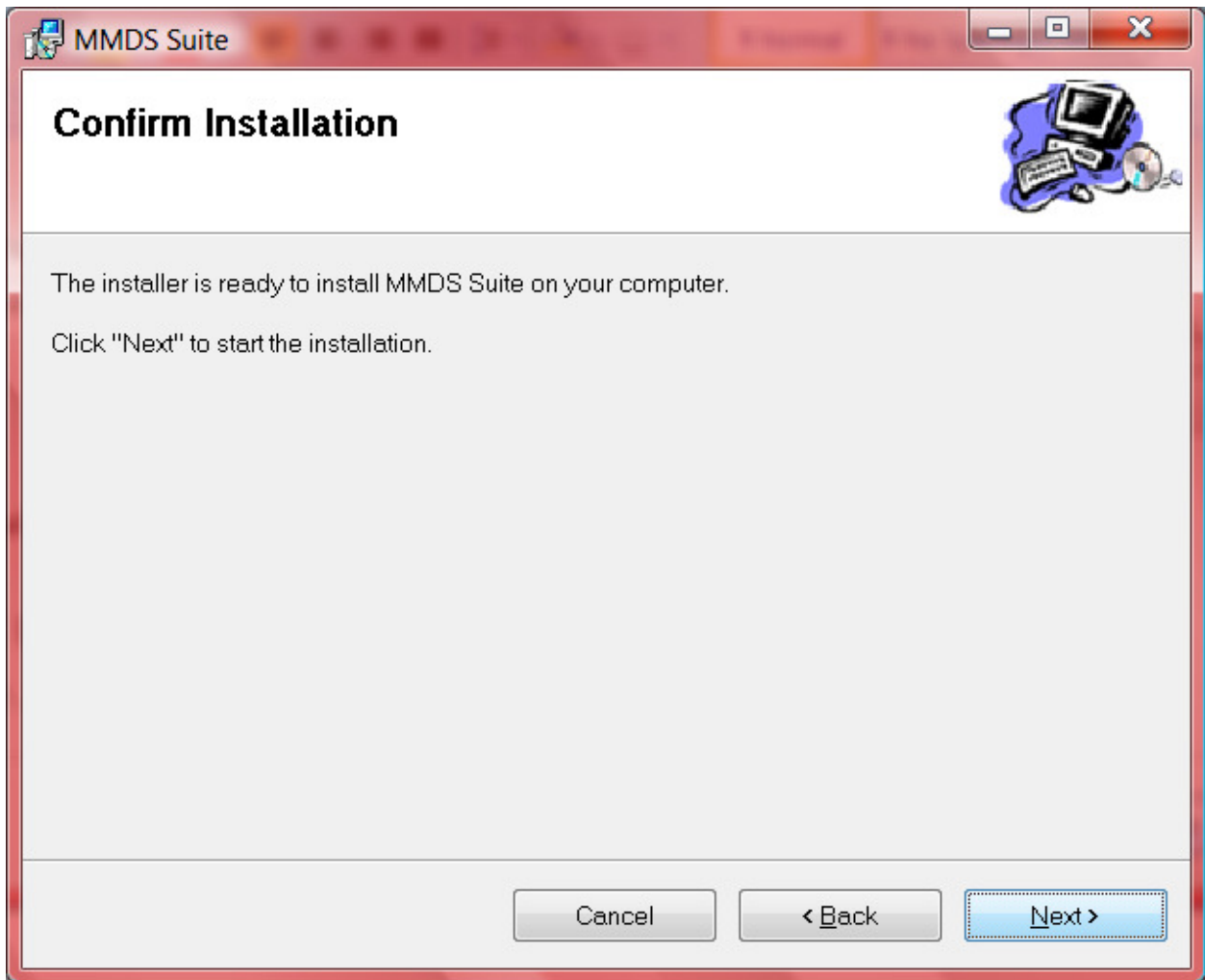
*Some networks will require administrator rights to run setup.exe. You may have to contact your IT staff to get the necessary privileges. It is recommended the software be installed under your USER ID/Login with admin rights for the install.*

Setup will begin installing the software on your system.

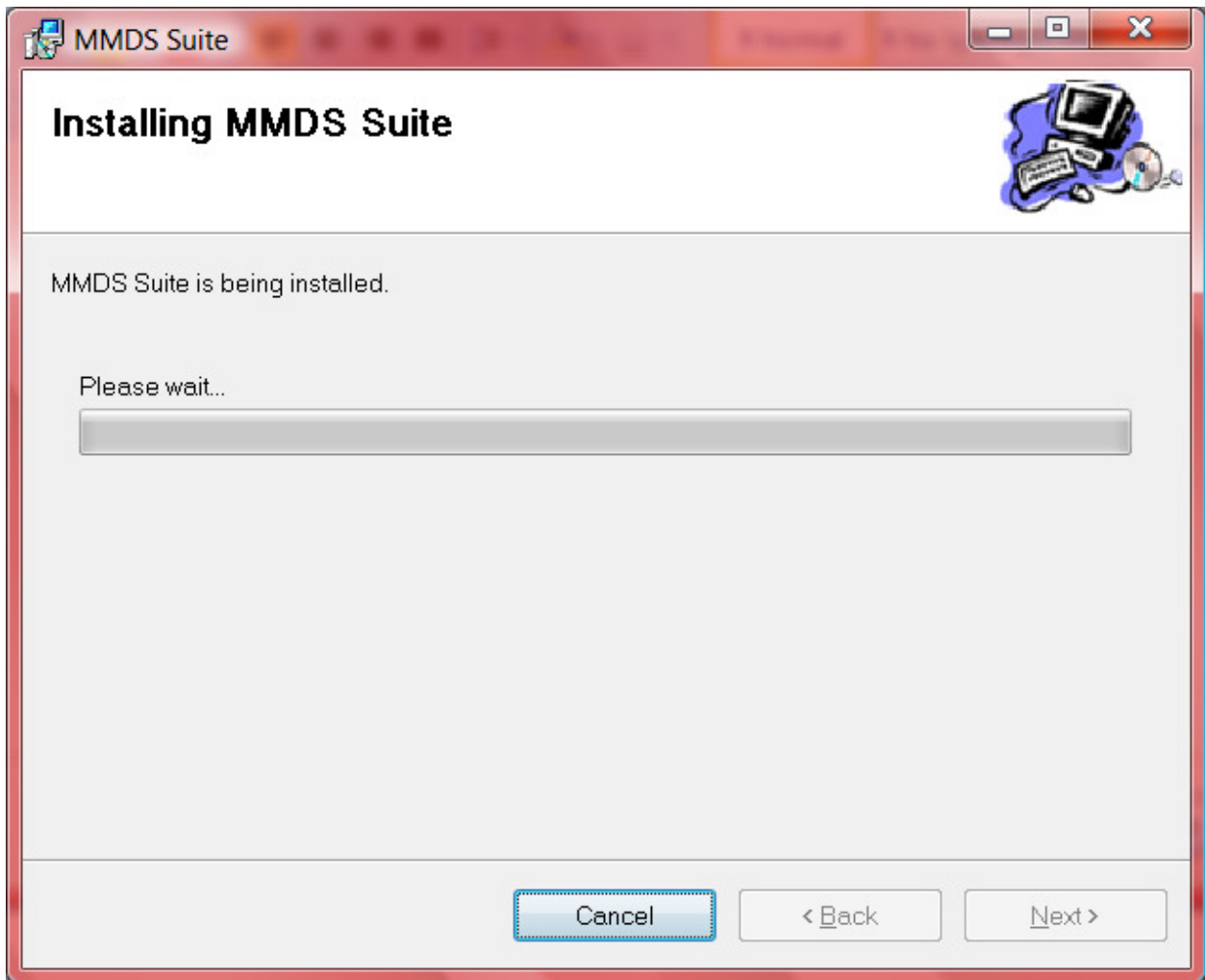


This screen shows you the installation target for the programs. You may change it if you wish. Pay attention to the Everyone or Just me selection at the lower left and make whichever choice you prefer.

Click next when ready.

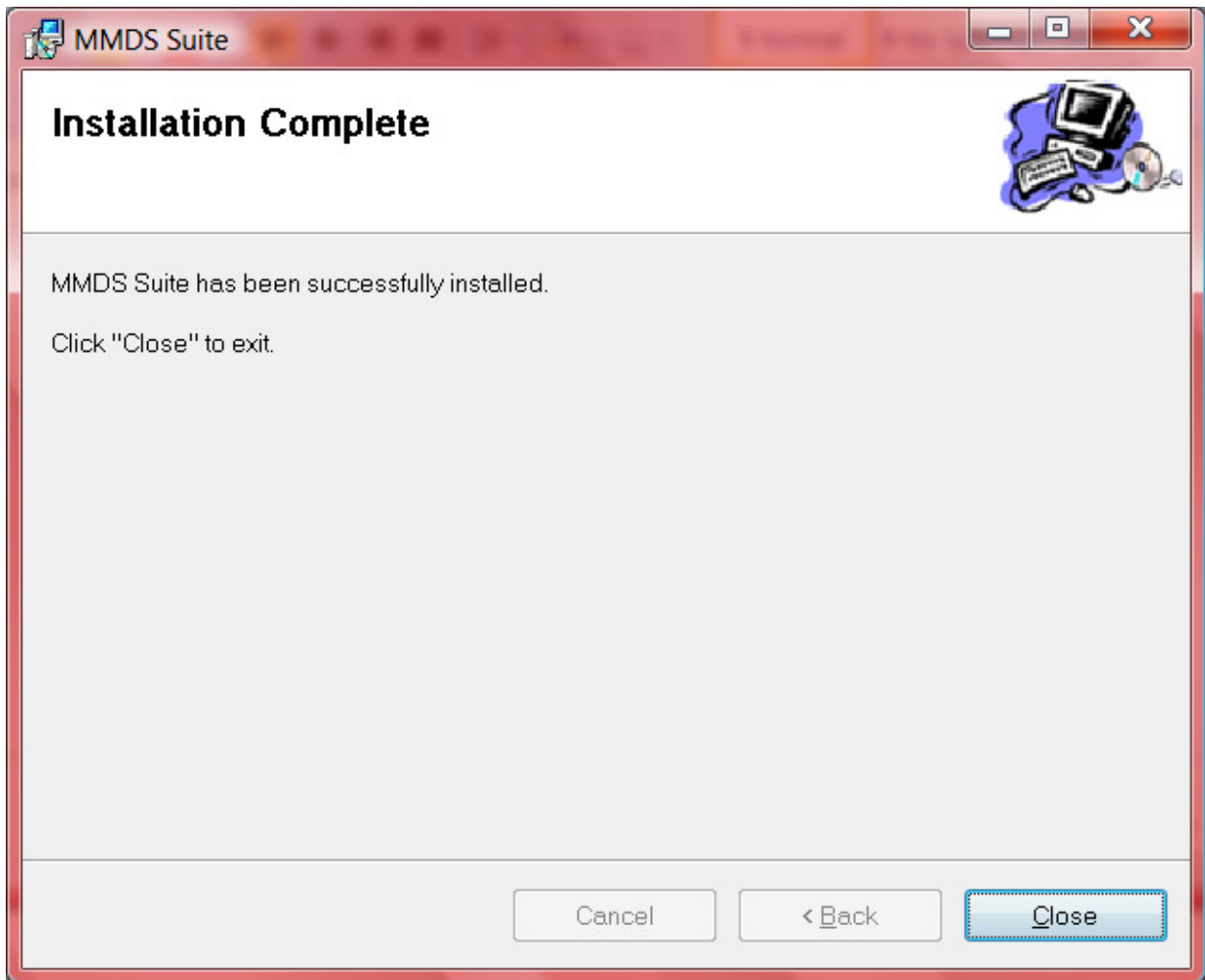


Just click next here and move on.



This screen will appear, take a moment and then a meter bar will begin to advance. Just let it run.

Some OS will prompt at this point in another box asking whether you want to Cancel or Allow. You should click Allow and the installation will continue.



When it is finished just click on close.

Desktop icons for the 2010 programs will be installed.

**In case of problems, contact NCHS at 1-800-642-8908 or by email at [sfr5@cdc.gov](mailto:sfr5@cdc.gov).**