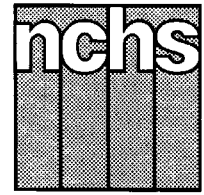


Monthly Vital Statistics Report



Provisional Data From the CENTERS FOR DISEASE CONTROL AND PREVENTION/National Center for Health Statistics

Births, Marriages, Divorces, and Deaths for 1997

Births

According to provisional reports, an estimated 324,000 births occurred in the United States during December 1997. This was an increase of 7 percent from the provisional number of births reported for December 1996 (302,000). The birth rate, 14.2 live births per 1,000 population, was 6 percent higher than the rate

for December 1996. The fertility rate, 63.9 live births per 1,000 women aged 15–44 years, was 7 percent higher than the comparable rate for December 1996 (59.8). The seasonally adjusted fertility rate (66.5) was also 7 percent higher than the comparable rate for December 1996 (62.1).

An estimated 3,882,000 live births occurred in 1997, a slight decline from the

3,899,000 births reported for the previous year. The birth rate of 14.5 was 1 percent lower than the rate of 14.7 for 1996. The fertility rate for 1997 was 65.0, 1 percent lower than the rate for 1996 (65.4). These slightly lower rates suggest that the generally downward trend in 12-month rates observed since early 1991 continued in 1997.

Provisional Vital Statistics for the United States

[Rates for infant deaths are deaths under 1 year per 1,000 live births; fertility rates are live births per 1,000 women aged 15–44 years; all other rates are per 1,000 total population. Data are subject to monthly reporting variation; see [Technical notes](#)]

Item	December				January–December				
	Number		Rate		Number		Rate		
	1997	1996	1997	1996	1997	1996	1997	1996	1995
Live births	324,000	302,000	14.2	13.4	3,882,000	3,899,000	14.5	14.7	14.8
Fertility rate	63.9	59.8	65.0	65.4	65.5
Deaths	192,000	200,000	8.4	8.9	2,294,000	2,311,000	8.6	8.7	8.8
Infant deaths	2,200	2,300	6.6	7.2	27,000	28,100	7.0	7.2	7.6
Natural increase	132,000	102,000	5.8	4.5	1,588,000	1,588,000	5.9	6.0	6.0
Marriages	165,000	184,000	7.2	8.1	2,384,000	2,344,000	8.9	8.8	8.9
Divorces	104,000	94,000	4.5	4.2	1,163,000	1,150,000	4.3	4.3	4.4
Population base (in millions)	268.8	266.3	267.6	265.2	262.8

... Category not applicable.

NOTES: Figures include revisions received from the States. Twelve-month figures for the current year reflect revisions received for previous months, and figures for earlier years may differ from those previously published.

Beginning with Volume 47, Number 1, the *Monthly Vital Statistics Report* will be renamed the *National Vital Statistics Reports*. The monthly issues will become a two-page publication, including what had been previously published as the summary table, table 1, and Technical notes. The Current Mortality Sample (CMS) will be replaced with a detailed biannual report of births and deaths (*Births and Deaths: United States*) based on preliminary data. The complete year's CMS data, including December 1997, will be made available as unpublished data to users. In addition, tables previously published in this report that show provisional data by State will be made available on the NCHS home page on the Internet at www.cdc.gov/nchswww/



U.S. DEPARTMENT OF HEALTH AND HUMAN SERVICES
Centers for Disease Control and Prevention
National Center for Health Statistics



The birth and fertility rates—which increased dramatically in the 1940’s and 1950’s, declined rapidly in the 1960’s and early 1970’s, and increased again in the late 1980’s—have been declining in the 1990’s. The 1997 birth rate is the lowest ever recorded, while the fertility rate is the same as the lowest ever recorded in 1976.

Changes in the annual number of births are affected by two factors—changes in age-specific birth rates and changes in the number and age composition of women in the childbearing ages. According to estimates prepared by the U.S. Bureau of the Census (1), there was a 0.1-percent increase in the number of women in the childbearing ages (15–44 years) between 1996 and 1997. The 1-percent decline in the fertility rate between 1996 and 1997 is consistent with the aging of the baby-boom women moving into their forties.

Natural increase

As a result of natural increase, the excess of births over deaths, an estimated 132,000 people were added to the population during December 1997 at an annual rate of 5.8 persons per 1,000 population.

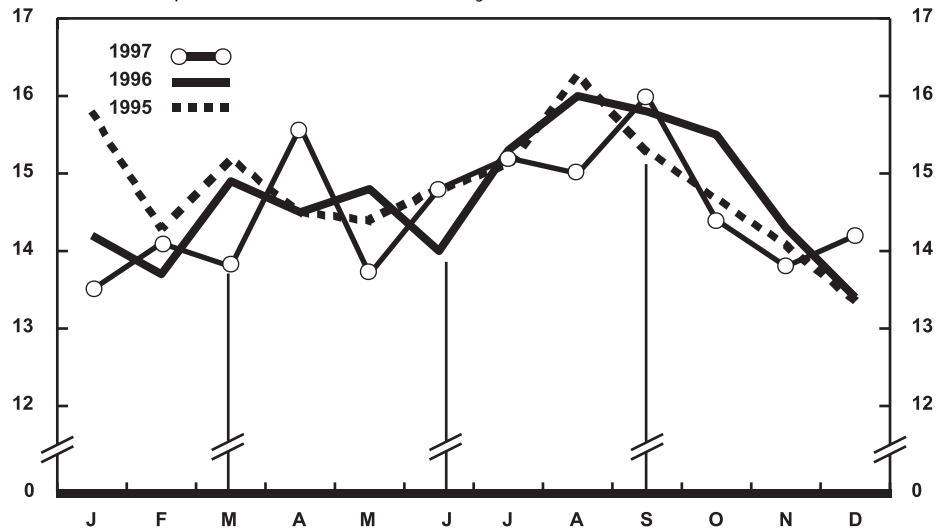
For 1997, 1,588,000 persons were added to the population. This represented a rate of natural increase of 5.9, 2 percent lower than the rate in 1996 (6.0). The lower rate of natural increase was due to a slightly larger decrease in the birth rate compared to the decrease in the death rate.

Marriages

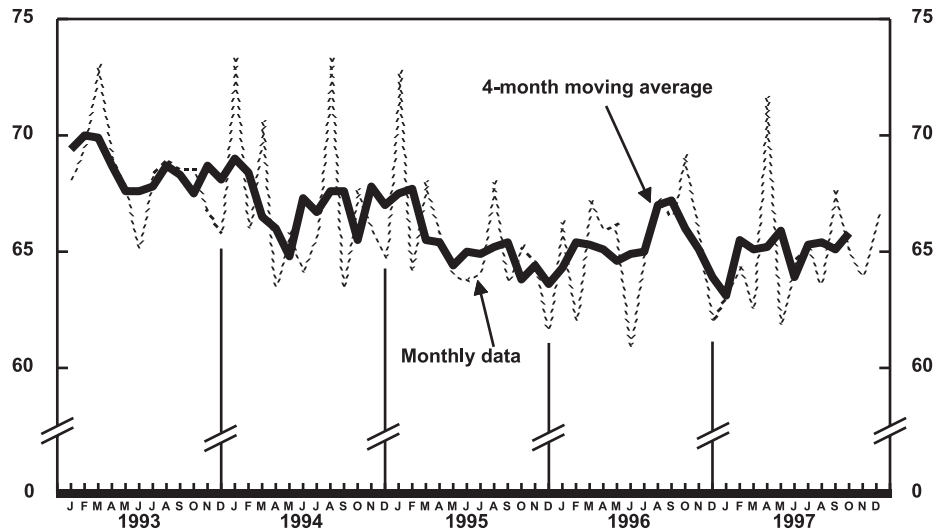
An estimated 165,000 marriages were performed in December 1997, yielding a marriage rate of 7.2 marriages per 1,000 population.

The provisional number of marriages for 1997 was 2,384,000, a 2-percent increase compared with the number for 1996 (2,344,000). The marriage rate per 1,000 population for 1997 was 8.9, 1 percent higher than the 1996 marriage rate of 8.8, which was the lowest rate in the general decline of marriages since 1963 (2).

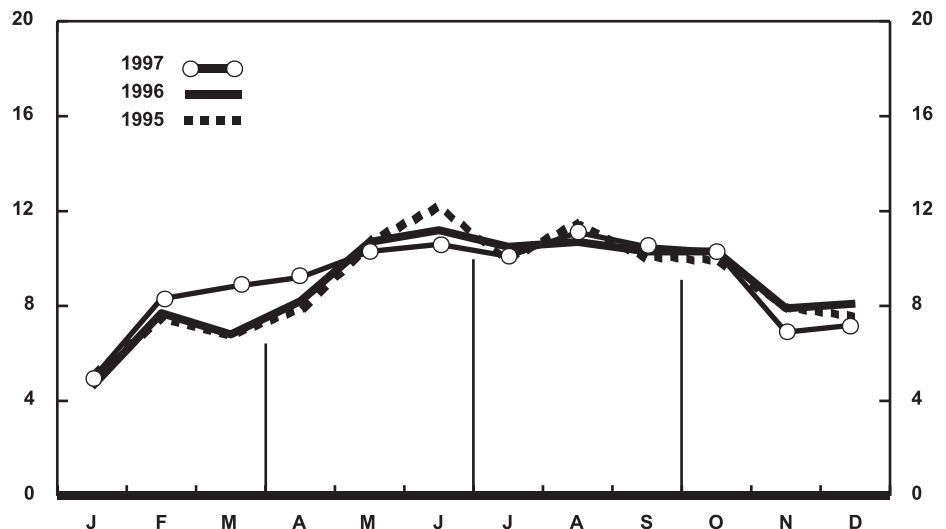
The decline in marriages is also shown by the trends in the marriage rate per 1,000 unmarried women 15 years of age and over and by the marriage rate per 1,000 unmarried women 15–44 years of



Provisional birth rates per 1,000 population by month: United States, 1995–97



Provisional seasonally adjusted fertility rates per 1,000 women aged 15–44 years: United States, 1993–97



Provisional marriage rates per 1,000 population by month: United States, 1995–97

age. The marriage rate per 1,000 unmarried women 15 years of age and over has dropped steadily since 1990 and was 1 percent lower in 1997 (49.4) than in 1996 (49.7). The marriage rate per 1,000 unmarried women 15–44 years of age had been declining annually since 1990, but was slightly higher (less than 1 percent) in 1997 (81.8) than in 1996 (81.5).

Marriages in 1997 exhibited an atypical seasonal pattern with the peak number in August (252,000) and the lowest number in January (105,000). Other months with high numbers of marriage were October (235,000) and May (234,000).

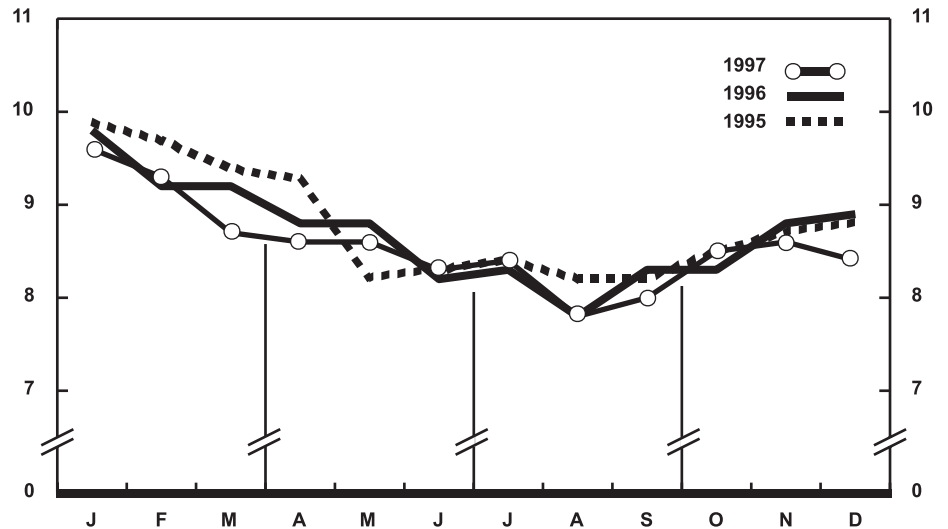
Reflecting the national marriage total at 2 percent more for 1997 than 1996, the majority of areas (27 States and the District of Columbia) had higher numbers in 1997 than in 1996. Montana had the same number in 1997 as in 1996. Of the remaining 22 States, excluding Maine whose data were unavailable, 21 States had lower numbers of marriages in 1997 than in 1996.

Divorces

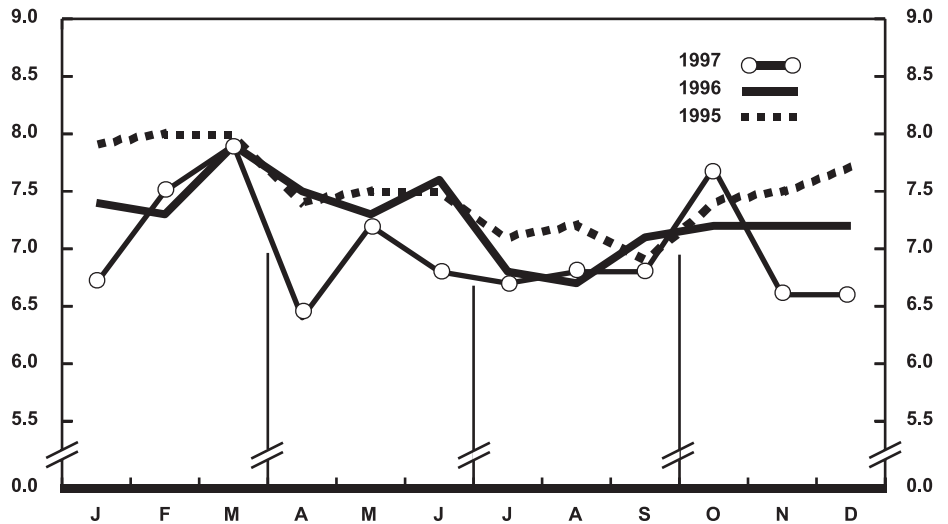
The estimated number of divorces granted in December 1997 was 104,000 compared with 94,000 divorces granted in December a year earlier. The divorce rate per 1,000 population for December increased from 4.2 in 1996 to 4.5 in 1997.

The cumulative number of divorces granted in 1997 was 1,163,000, 1 percent more than the number for 1996 (1,150,000). The divorce rate per 1,000 population for 1997 was the same as the rate for 1996 (4.3), the lowest divorce rate in over two decades (3). The divorce rate per 1,000 married women 15 years of age and over was 19.8 in 1997, 2 percent higher than the rate for 1996, (19.5) which was the lowest rate since 1974.

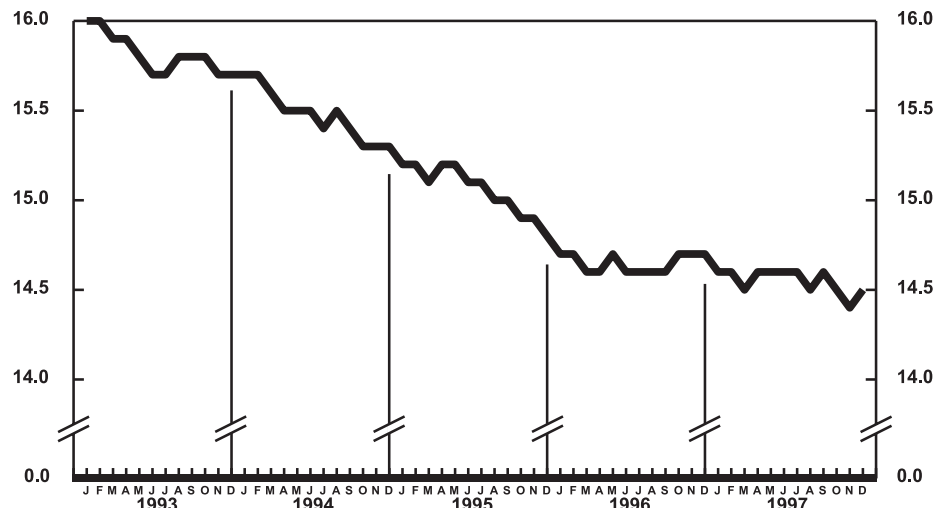
The number of divorces granted in 1997 was lower than the number granted in 1996 for 22 States and the District of Columbia; the number granted was higher for 23 States in 1997 than the number granted in 1996. The following areas did not provide provisional divorce data in 1997: California, Colorado, Indiana, Louisiana, and Texas.



Provisional death rates per 1,000 population by month: United States, 1995-97



Provisional infant mortality rates per 1,000 live births by month: United States, 1995-97



Provisional birth rates per 1,000 population for successive 12-month periods ending with month indicated: United States, 1993-97

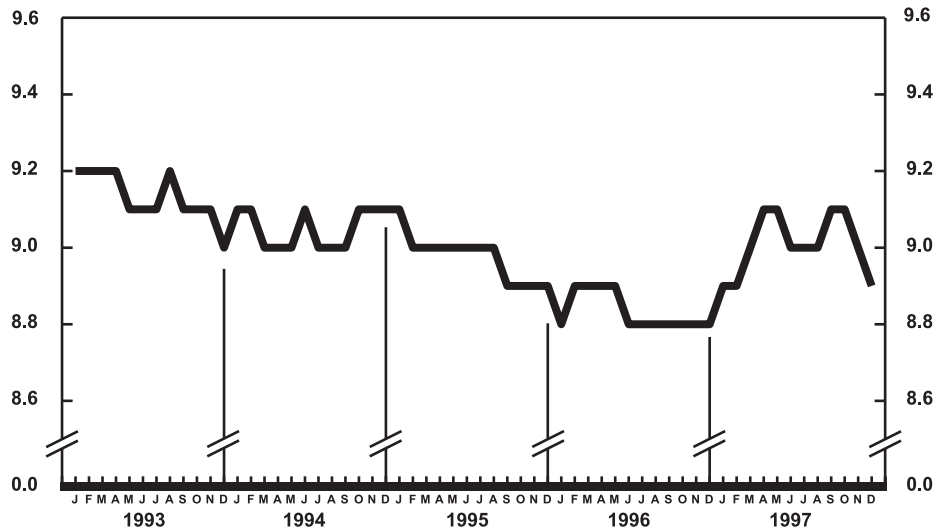
Deaths

The provisional count of deaths furnished by the 50 States and the District of Columbia during 1997 totaled 2,294,000, which was 17,000 fewer deaths than in the previous year. The death rate of 8.6 per 1,000 population was 1 percent below the rate for 1996 (8.7). About 27,000 of these deaths were to infants under 1 year of age, yielding an infant mortality rate of 7.0 per 1,000 live births. This rate was 3 percent lower than the rate of 7.2 for 1996.

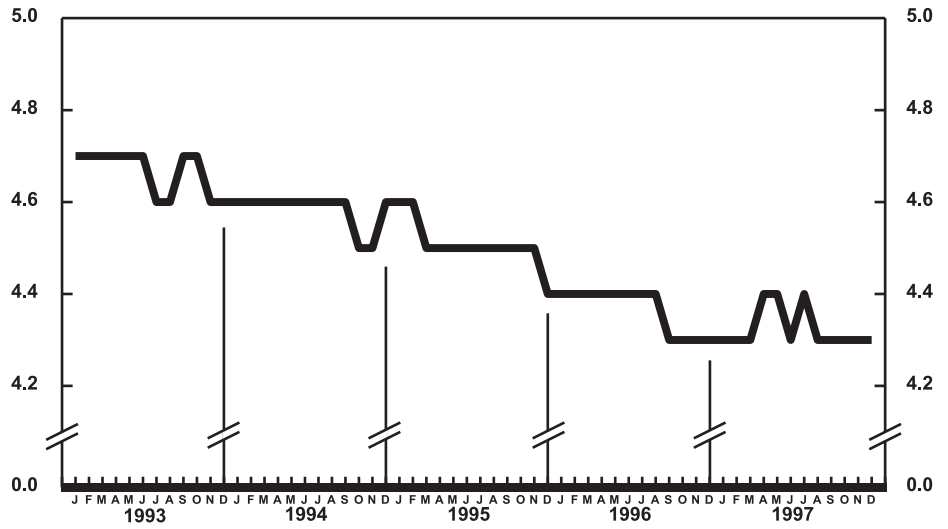
Current Mortality Sample, 12 months ending with November 1997—The provisional death rate for the 12 months ending with November 1997 was 861.0 per 100,000 population, 1 percent lower than the rate of 871.0 for the 12-month period ending November 1996. The provisional age-adjusted death rate for the 12-month period ending with November 1997 was 477.7 per 100,000 U.S. standard population, 3 percent lower than the rate of 492.9 for the 12-month period ending with November 1996. The age-adjusted death rates control for changes and variations in the age composition of the population; therefore, they are better indicators than crude rates for showing changes in mortality risk over time and for showing differences between race-sex groups within the population. Among the four race-sex groups, the estimated age-adjusted death rates decreased for all race-sex groups. By age the death rate for the total population decreased for those age groups from 15–24 years of age through 75–84 years of age.

Among the major causes of death, the estimated death rate decreased between the two successive 12-month periods for Human immunodeficiency virus infection; Homicide and legal intervention; Suicide; Diseases of Heart; and Malignant neoplasms, including neoplasms of lymphatic and hematopoietic tissues. The decrease in the death rate for Homicide and legal intervention was largely due to the decline in the rate for homicide by firearms. The death rate increased between the two successive 12-month periods for Pneumonia and influenza.

The death rate for injury by firearms for the 12 months ending with November 1997 was 12.0 per 100,000 population,



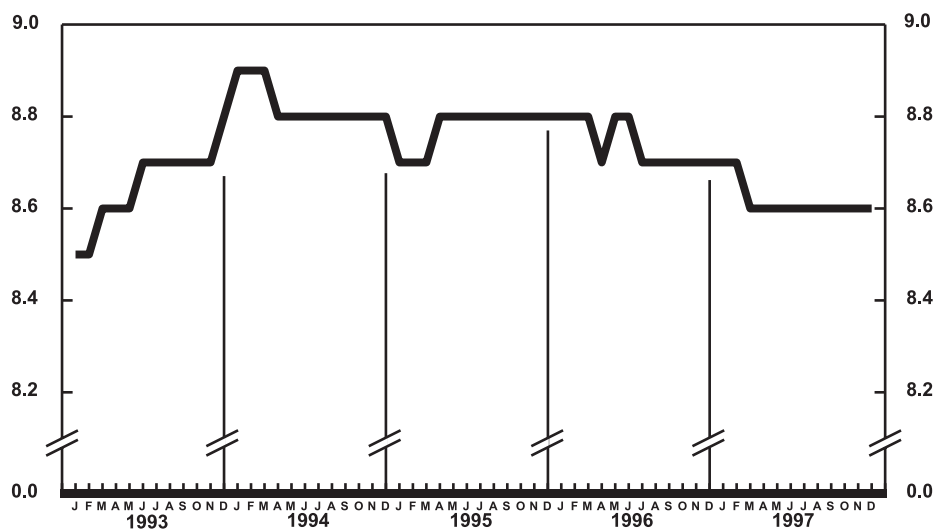
Provisional marriage rates per 1,000 population for successive 12-month periods ending with month indicated: United States, 1993–97



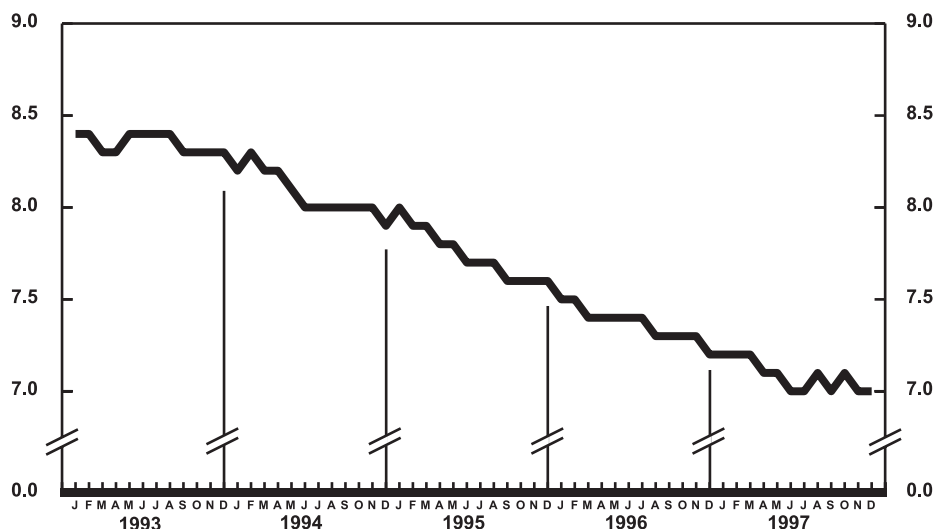
Provisional divorce rates per 1,000 population for successive 12-month periods ending with month indicated: United States, 1993–97

8 percent lower than the rate of 13.1 for the comparable 12-month period a year earlier.

The infant mortality rate for the 12 months ending with November 1997 was 704.6 per 100,000 live births, 3 percent lower than the rate of 727.2 for the same 12-month period a year earlier. For infants under 28 days of age, the 12-month rate ending November 1997 was 457.9 compared with the rate of 480.4 ending the 12-month period a year earlier. The infant mortality rate for infants aged 28 days–11 months was 246.4, almost the same as the rate of 246.9 for the 12-month period a year earlier. The changes in the mortality rates for infants under 28 days of age and for infants aged 28 days–11 months were not statistically significant. Among causes of infant death, the mortality rate for Sudden infant death syndrome decreased between the two successive 12-month periods.



Provisional death rates per 1,000 population for successive 12-month periods ending with month indicated: United States, 1993–97



Provisional infant mortality rates per 1,000 live births for successive 12-month periods ending with month indicated: United States, 1993–97

Table 1. Provisional number of live births, marriages, divorces, deaths, and infant deaths and rates, by month: United States, January 1996–December 1997

[Data are provisional and are subject to monthly reporting variation; see [Technical notes](#)]

Period	Live births				Marriages		Divorces		Deaths		Infant deaths	
	Number	Rate per 1,000 population	Rate per 1,000 women aged 15–44 years		Number	Rate per 1,000 population	Number	Rate per 1,000 population	Number	Rate per 1,000 population	Number	Rate per 1,000 live births
			Unadjusted	Seasonally adjusted ¹								
1996:												
January	318,000	14.2	63.2	66.3	100,000	4.6	94,000	4.2	220,000	9.8	2,400	7.4
February	286,000	13.7	60.7	62.0	155,000	7.7	85,000	4.1	193,000	9.2	2,200	7.3
March	334,000	14.9	66.3	67.3	147,000	8.2	93,000	4.2	206,000	9.2	2,600	7.9
April	314,000	14.5	64.3	65.9	172,000	8.2	95,000	4.4	192,000	8.8	2,300	7.5
May	332,000	14.8	65.7	66.2	241,000	10.7	103,000	4.6	198,000	8.8	2,400	7.3
June	304,000	14.0	62.2	61.0	242,000	11.2	103,000	4.8	179,000	8.2	2,300	7.6
July	343,000	15.3	67.9	65.2	235,000	10.5	96,000	4.3	187,000	8.3	2,300	6.8
August	360,000	16.0	71.3	67.3	239,000	10.7	101,000	4.5	176,000	7.8	2,200	6.7
September	345,000	15.8	70.6	66.5	225,000	10.3	92,000	4.2	182,000	8.3	2,400	7.1
October	348,000	15.5	68.9	69.2	231,000	10.3	99,000	4.4	188,000	8.3	2,500	7.2
November	313,000	14.3	63.9	66.0	171,000	7.9	94,000	4.3	191,000	8.8	2,300	7.2
December	302,000	13.4	59.8	62.1	184,000	8.1	94,000	4.2	200,000	8.9	2,300	7.2
1997:												
January	305,000	13.5	60.2	63.2	105,000	4.9	94,000	4.1	218,000	9.6	2,100	6.7
February	289,000	14.1	63.1	64.4	163,000	8.3	87,000	4.3	191,000	9.3	2,200	7.5
March	313,000	13.8	61.7	62.6	191,000	8.8	95,000	4.2	198,000	8.7	2,500	7.9
April	342,000	15.6	69.8	71.6	193,000	9.2	106,000	4.8	189,000	8.6	2,100	6.4
May	311,000	13.7	61.5	61.9	234,000	10.3	99,000	4.3	195,000	8.6	2,300	7.2
June	324,000	14.8	66.1	64.7	233,000	10.6	100,000	4.6	182,000	8.3	2,200	6.8
July	345,000	15.2	68.1	65.3	229,000	10.1	99,000	4.4	192,000	8.4	2,300	6.7
August	341,000	15.0	67.3	63.6	252,000	11.1	93,000	4.1	178,000	7.8	2,200	6.8
September	353,000	16.0	71.9	67.7	232,000	10.5	96,000	4.4	176,000	8.0	2,300	6.8
October	329,000	14.4	64.9	65.1	235,000	10.3	102,000	4.5	193,000	8.5	2,600	7.7
November	304,000	13.8	61.9	63.9	151,000	6.9	87,000	4.0	189,000	8.6	2,000	6.6
December	324,000	14.2	63.9	66.5	165,000	7.2	104,000	4.5	192,000	8.4	2,200	6.6

¹The method of seasonal adjustment, developed by the U.S. Bureau of the Census, is described in *The X-11 Variant of the Census Method II Seasonal Adjustment Program*, Technical Paper No. 15 (1967 revision).

NOTE: Figures include all revisions received from the States and, therefore, may differ from those previously published.

Table 2. Provisional number of live births and deaths: Each division and State, December 1996 and 1997, and cumulative figures, 1995–97

[Data are estimates by State of residence; see [Technical notes](#)]

Area	Live births					Deaths				
	December		January–December			December		January–December		
	1997	1996	1997	1996	1995	1997	1996	1997	1996	1995
New England	9,977	10,958	172,126	171,393	178,775	9,247	12,219	116,718	119,119	120,461
Maine	1,075	1,167	13,524	13,718	14,006	871	1,011	11,075	11,035	11,625
New Hampshire	1,474	1,084	14,456	14,125	15,069	867	801	9,488	9,114	9,244
Vermont	556	517	6,691	6,773	6,780	472	367	5,272	4,885	5,031
Massachusetts	2,185	3,665	82,311	80,165	85,045	3,416	5,871	52,101	55,328	55,965
Rhode Island	1,091	1,142	12,355	12,601	12,695	896	1,029	9,784	9,574	9,640
Connecticut	3,596	3,383	42,789	44,011	45,180	2,725	3,140	28,998	29,183	28,956
Middle Atlantic	50,496	51,628	537,939	535,193	531,123	30,494	31,728	361,153	364,233	371,192
New York	18,971	22,604	282,389	271,569	264,253	13,018	13,652	161,159	162,875	168,140
New Jersey	20,670	16,489	113,235	113,713	115,116	6,742	5,887	72,102	71,895	74,974
Pennsylvania	10,855	12,535	142,315	149,911	151,754	10,734	12,189	127,892	129,463	128,078
East North Central	50,831	48,761	601,719	624,455	625,045	33,672	37,624	383,605	394,908	395,210
Ohio	13,103	10,799	151,879	152,233	155,568	9,441	9,850	105,446	105,213	105,799
Indiana	6,062	7,604	69,218	83,417	84,188	3,302	4,613	47,043	54,321	52,514
Illinois	15,559	15,001	180,621	184,526	185,442	9,246	10,898	102,480	106,355	108,735
Michigan	10,570	10,217	133,627	137,518	132,783	7,796	8,043	83,534	83,972	83,394
Wisconsin	5,537	5,140	66,374	66,761	67,064	3,887	4,220	45,102	45,047	44,768
West North Central	19,924	21,770	255,580	253,702	253,754	12,815	15,708	170,204	168,223	170,443
Minnesota	4,939	4,969	64,633	63,657	62,752	3,111	3,371	37,207	36,804	37,028
Iowa	3,090	3,291	36,868	34,838	36,399	722	2,653	26,179	26,315	25,897
Missouri	5,398	5,242	74,538	73,132	74,946	4,160	4,988	54,543	53,697	55,599
North Dakota	637	673	8,326	8,396	8,719	507	440	6,027	5,753	6,099
South Dakota	900	932	10,138	10,081	10,574	617	510	6,992	6,314	6,901
Nebraska	1,842	2,040	23,243	23,355	23,159	1,445	1,663	15,248	15,472	15,284
Kansas	3,118	4,623	37,834	40,243	37,205	2,253	2,083	24,008	23,868	23,635
South Atlantic	54,343	51,576	661,656	658,995	655,356	39,112	38,116	440,432	440,186	436,204
Delaware	847	897	10,135	10,142	10,013	579	620	6,424	6,443	6,151
Maryland	5,410	4,028	66,253	71,042	72,198	4,063	3,800	40,472	41,965	41,004
District of Columbia	704	669	8,327	8,240	8,943	508	598	5,984	6,317	6,653
Virginia	6,960	7,301	88,669	89,149	89,948	4,682	5,095	53,261	52,847	52,989
West Virginia	1,234	1,037	20,466	19,621	20,954	1,723	1,750	20,870	19,106	19,887
North Carolina	8,494	7,189	105,766	106,261	102,165	5,741	6,074	66,101	66,357	65,132
South Carolina	4,155	3,486	51,252	50,568	49,841	3,252	3,389	32,998	34,603	32,570
Georgia	10,023	10,496	118,365	114,603	113,196	4,951	4,771	59,314	58,802	58,230
Florida	16,516	16,473	192,423	189,369	188,098	13,613	12,019	155,008	153,746	153,588
East South Central	22,231	19,389	230,843	229,159	223,287	13,223	13,080	160,352	156,908	158,420
Kentucky	4,119	3,695	52,696	52,545	51,015	3,275	3,211	38,256	37,550	38,319
Tennessee	7,786	6,845	74,755	73,658	73,892	3,989	3,986	52,113	49,934	50,658
Alabama	4,822	4,919	60,921	61,514	61,182	3,426	3,543	42,704	42,668	42,254
Mississippi	5,504	3,930	42,471	41,442	37,198	2,533	2,340	27,279	26,756	27,189
West South Central	40,597	37,637	465,914	462,216	473,948	20,194	20,255	230,942	235,560	237,503
Arkansas	3,099	3,055	36,985	35,876	34,340	2,306	2,278	25,545	25,666	25,960
Louisiana	4,985	5,159	64,199	66,291	67,376	3,186	3,650	37,660	40,460	39,348
Oklahoma	4,560	3,325	47,985	45,151	45,894	2,968	2,870	33,687	33,224	32,852
Texas ¹	27,953	26,098	316,745	314,898	326,338	11,734	11,457	134,050	136,210	139,343
Mountain	22,578	19,598	270,129	254,829	240,966	10,551	9,665	120,632	121,162	113,880
Montana	862	824	10,463	10,797	11,230	627	665	7,697	7,710	7,646
Idaho	1,768	1,568	17,979	18,868	17,735	806	774	9,014	8,685	8,488
Wyoming	536	512	6,387	6,198	6,293	344	347	3,737	3,610	3,781
Colorado	4,962	3,747	52,050	47,610	49,938	2,303	2,552	25,640	25,853	24,852
New Mexico	2,507	2,081	26,571	27,173	27,142	955	842	12,788	12,325	12,475
Arizona	5,697	6,528	86,032	79,530	68,434	3,347	2,631	37,334	39,005	33,633
Utah	3,631	3,194	43,670	41,214	38,870	881	870	11,437	11,077	10,814
Nevada	2,615	1,144	26,977	23,439	21,324	1,288	984	12,985	12,897	12,191
Pacific	56,889	43,984	674,380	694,680	713,738	22,742	21,613	309,909	310,475	302,727
Washington	6,731	5,929	79,529	79,808	78,160	4,325	2,965	42,952	39,493	40,582
Oregon	2,479	2,814	43,394	43,798	42,953	1,991	2,725	28,634	28,293	28,011
California ¹	45,491	32,911	524,618	542,553	564,156	15,582	14,953	228,131	232,266	224,157
Alaska	787	906	9,710	10,176	10,081	209	332	2,465	2,562	2,450
Hawaii	1,401	1,424	17,129	18,345	18,388	635	638	7,727	7,861	7,527
Puerto Rico ²	4,849	5,856	63,663	61,321	61,160	2,838	3,875	26,455	28,591	29,941

¹Figures include adjustments for varying lengths of reporting periods; see [Technical notes](#).

²Data for Puerto Rico are not included in U.S. total figures.

NOTES: Figures include all revisions received from the States. Cumulative figures for the current year reflect revisions received for previous months, and figures for earlier years may differ from those previously published.

Table 3. Provisional number of marriages and divorces: Each division and State, December 1996 and 1997, and cumulative figures, 1995–97

[By State of occurrence. Number of events reported; see [Technical notes](#). Divorces include reported annulments]

Area	Marriages					Divorces				
	December		January–December			December		January–December		
	1997	1996	1997	1996	1995	1997	1996	1997	1996	1995
New England	15,241	5,863	189,302	95,694	99,998	3,689	12,054	43,522	38,168	40,849
Maine	---	575	---	10,213	10,757	619	---	4,549	4,551	5,467
New Hampshire	801	488	10,135	9,720	9,631	400	488	5,601	5,001	4,871
Vermont	306	277	6,096	5,923	6,051	262	102	2,779	2,490	2,786
Massachusetts	2,574	2,550	42,404	40,584	43,593	1,386	242	16,185	12,368	13,453
Rhode Island	405	446	8,075	7,828	7,385	284	241	3,162	3,228	3,654
Connecticut	1,155	1,527	22,592	21,426	22,581	738	981	11,246	10,530	10,618
Middle Atlantic	21,774	26,065	306,485	274,124	275,605	10,629	8,954	129,735	124,200	119,731
New York ²	11,303	17,120	172,808	152,263	147,405	4,849	3,932	65,500	60,826	55,999
New Jersey	5,699	5,688	56,410	51,688	52,397	2,206	2,230	25,537	25,048	24,293
Pennsylvania	4,772	3,257	77,267	70,173	75,803	3,574	2,792	38,698	38,326	39,439
East North Central	23,021	23,318	315,506	327,558	331,032	13,118	13,406	142,928	141,098	144,898
Ohio	8,263	6,422	86,217	82,844	90,125	4,432	4,787	47,211	44,638	48,682
Indiana	2,643	3,768	31,949	49,198	50,426	---	---	---	---	---
Illinois	6,642	6,995	94,808	90,178	83,218	4,024	3,507	40,007	40,442	38,784
Michigan	3,994	4,503	66,817	69,091	70,963	3,366	3,615	38,623	38,690	39,910
Wisconsin	1,479	1,630	35,715	36,247	36,300	1,296	1,497	17,087	17,328	17,522
West North Central	8,467	8,976	141,993	148,239	145,821	6,329	6,156	72,977	74,098	75,256
Minnesota	1,710	1,754	32,234	33,185	32,782	1,728	1,433	15,439	15,211	15,828
Iowa	1,085	1,198	22,120	23,832	22,049	737	757	9,807	9,896	10,504
Missouri	2,801	3,341	43,585	46,102	44,879	2,213	2,435	25,257	26,253	26,844
North Dakota	163	200	4,327	5,029	4,597	151	120	2,048	2,242	2,204
South Dakota	427	429	6,898	6,728	7,281	271	230	2,746	2,732	2,888
Nebraska	825	897	12,459	12,762	12,125	452	451	6,216	6,091	6,256
Kansas	1,456	1,157	20,370	20,601	22,108	777	730	11,464	11,673	10,732
South Atlantic	31,137	36,345	458,186	441,884	442,896	18,187	19,442	231,440	225,025	227,312
Delaware	316	303	5,365	5,198	5,355	183	225	2,940	3,347	3,671
Maryland	2,787	3,407	41,632	41,781	42,808	1,251	1,937	15,145	16,323	15,025
District of Columbia	259	882	3,757	3,360	3,535	180	114	1,180	1,444	1,858
Virginia	4,823	5,129	67,402	65,406	67,938	3,104	3,001	31,322	28,647	28,897
West Virginia	536	757	10,580	11,068	11,205	772	904	9,607	8,024	9,393
North Carolina	4,197	5,322	64,507	61,902	61,644	2,778	3,105	36,791	35,877	36,978
South Carolina	2,487	3,812	42,077	43,136	44,619	1,061	1,079	15,244	15,236	14,753
Georgia	4,016	4,125	61,915	60,092	61,451	2,353	2,326	36,259	35,909	37,209
Florida	11,716	12,608	160,951	149,941	144,341	6,505	6,751	82,952	80,218	79,528
East South Central	13,849	16,312	187,961	194,061	193,445	11,802	6,708	87,807	97,087	94,997
Kentucky	2,499	2,977	44,739	43,290	47,576	1,619	1,583	22,056	21,199	22,883
Tennessee	7,356	7,725	76,531	82,064	82,335	7,929	2,643	29,459	34,412	33,081
Alabama	2,426	3,547	44,715	47,367	42,006	1,417	1,507	22,448	25,779	25,957
Mississippi	1,568	2,063	21,976	21,340	21,528	837	975	13,844	15,697	13,076
West South Central	20,831	26,594	281,785	280,952	300,464	13,237	13,230	133,930	134,522	136,243
Arkansas	3,027	3,625	35,246	36,232	36,626	1,622	1,600	14,822	15,239	16,041
Louisiana	2,860	5,048	35,857	38,932	40,840	---	---	---	---	---
Oklahoma	2,221	2,417	27,672	26,675	28,546	1,615	1,630	19,108	19,283	21,829
Texas ³	12,723	15,504	183,010	179,113	194,452	---	---	---	---	98,373
Mountain	17,037	21,554	271,936	279,471	272,039	18,265	16,954	176,766	176,377	174,305
Montana	445	439	6,626	6,626	6,645	404	362	4,026	4,251	4,179
Idaho	823	966	15,154	14,970	15,479	622	600	7,147	7,016	6,770
Wyoming	365	336	4,909	4,897	5,153	278	289	2,969	3,122	3,197
Colorado	2,817	2,354	33,700	34,453	34,295	---	---	---	---	---
New Mexico ^{4,5}	1,268	1,323	15,951	16,026	15,094	835	839	9,603	10,945	11,279
Arizona ²	3,816	3,026	40,241	39,223	38,949	2,357	1,909	26,363	25,826	27,633
Utah	1,342	1,557	20,493	22,048	21,639	903	875	9,164	9,276	8,892
Nevada	6,161	11,553	134,862	141,228	134,785	2,866	2,080	17,494	15,941	12,355
Pacific	25,490	21,442	330,533	308,704	291,548	14,668	13,185	151,492	149,194	153,152
Washington	1,945	2,694	42,347	39,194	42,030	2,895	1,515	29,017	26,530	29,677
Oregon	1,208	1,851	25,782	25,568	25,688	1,165	991	14,768	15,022	14,982
California	20,748	14,873	237,669	219,039	199,609	---	---	---	---	---
Alaska	226	662	5,023	5,425	5,461	222	322	2,946	2,831	2,999
Hawaii	1,363	1,362	19,712	19,478	18,760	386	357	4,761	4,811	5,494
Puerto Rico ⁶	4,316	5,142	28,840	30,914	32,392	---	---	---	---	---

--- Data not available.

¹Excludes figures for State(s) shown below as not available.

²Figures for marriages are marriage licenses issued for some counties.

³Figures include adjustments for varying lengths of reporting periods; see [Technical notes](#).

⁴Figures for marriages are marriage licenses issued.

⁵Figures for divorces include estimates for some counties.

⁶Data for Puerto Rico are not included in U.S. total figures.

NOTES: Figures include all revisions received from the States. Cumulative figures for the current year reflect revisions received for previous months, and figures for earlier years may differ from those previously published.

Table 4. Provisional number of deaths under 1 year and infant mortality rates: Each division and State, January–December 1996 and 1997

[Data are estimates by State of residence. Figures should be interpreted with caution because of conversion of place of occurrence to place of residence; see [Technical notes](#). Infant mortality rates are deaths under 1 year per 1,000 live births in specified area]

Area	January–December			
	1997		1996	
	Number	Rate	Number	Rate
New England	888	5.2	930	5.4
Maine	50	3.7	60	4.4
New Hampshire	64	4.4	81	5.7
Vermont	41	6.1	60	8.9
Massachusetts	350	4.3	390	4.9
Rhode Island	82	6.6	66	5.2
Connecticut	301	7.0	273	6.2
Middle Atlantic	3,476	6.5	3,768	7.0
New York	1,711	6.1	1,828	6.7
New Jersey	709	6.3	826	7.3
Pennsylvania	1,056	7.4	1,114	7.4
East North Central	4,554	7.6	4,888	7.8
Ohio	1,096	7.2	1,178	7.7
Indiana	509	7.4	626	7.5
Illinois	1,452	8.0	1,502	8.1
Michigan	1,078	8.1	1,082	7.9
Wisconsin	419	6.3	500	7.5
West North Central	1,687	6.6	1,880	7.4
Minnesota	380	5.9	407	6.4
Iowa	177	4.8	227	6.5
Missouri	545	7.3	595	8.1
North Dakota	62	7.4	36	4.3
South Dakota	77	7.6	54	5.4
Nebraska	184	7.9	203	8.7
Kansas	262	6.9	358	8.9
South Atlantic	5,374	8.1	5,443	8.3
Delaware	83	8.2	78	7.7
Maryland	595	9.0	594	8.4
District of Columbia	100	12.0	123	14.9
Virginia	661	7.5	660	7.4
West Virginia	168	8.2	161	8.2
North Carolina	1,018	9.6	975	9.2
South Carolina	453	8.8	402	7.9
Georgia	915	7.7	1,035	9.0
Florida	1,381	7.2	1,415	7.5
East South Central	2,090	9.1	2,051	9.0
Kentucky	436	8.3	397	7.6
Tennessee	630	8.4	622	8.4
Alabama	560	9.2	631	10.3
Mississippi	464	10.9	401	9.7
West South Central	3,274	7.0	3,157	6.8
Arkansas	312	8.4	288	8.0
Louisiana	586	9.1	558	8.4
Oklahoma	367	7.6	403	8.9
Texas ¹	2,009	6.3	1,908	6.1
Mountain	1,725	6.4	2,215	8.7
Montana	72	6.9	79	7.3
Idaho	109	6.1	134	7.1
Wyoming	33	5.2	37	6.0
Colorado	395	7.6	362	7.6
New Mexico	169	6.4	160	5.9
Arizona	540	6.3	1,055	13.3
Utah	252	5.8	242	5.9
Nevada	155	5.7	146	6.2
Pacific	3,950	5.9	4,142	6.0
Washington	416	5.2	425	5.3
Oregon	252	5.8	244	5.6
California ¹	3,122	6.0	3,287	6.1
Alaska	57	5.9	80	7.9
Hawaii	103	6.0	106	5.8
Puerto Rico ²	597	9.4	561	9.1

¹Figures include adjustments for varying lengths of reporting periods; see [Technical notes](#).

²Data for Puerto Rico are not included in U.S. total figures.

NOTES: Figures include all revisions received from the States. Figures for the current year reflect revisions received for previous months, and figures for earlier years may differ from those previously published.

Table 5. Provisional number of deaths and death rates, by age, race, and sex, and age-adjusted death rates by race and sex: United States, November 1996 and 1997, cumulative figures 1996 and 1997, and 12 months ending with November 1996 and 1997

[Data are provisional, estimated from a 10-percent sample of deaths. Age-specific rates on an annual basis per 100,000 population in specified group; age-adjusted rates per 100,000 U.S. standard population; see [Technical notes](#). Because of rounding of estimates, figures may not add to totals. For method of computation and information on standard errors of the estimates, see [Technical notes](#)]

Age, race, and sex	November				January–November				12 months ending with November							
	1997		1996		1997		1996		1997		1996					
	Number	Rate	Number	Rate	Number	Rate	Number	Rate	Number	Rate	Number	Rate				
All races, both sexes¹																
All ages	189,000	858.1	191,000	877.8	2,102,000	859.0	2,111,000	870.5	2,302,000	861.0	2,308,000	871.0				
Under 1 year	} 3,150	66.1	3,340	70.6	24,800	² 723.8	25,800	² 734.5	27,100	² 725.8	28,200	² 733.0				
1–4 years					4,950	35.3	5,470	38.3	5,340	34.9	5,950	38.2				
5–14 years					7,760	21.9	8,080	22.9	8,480	21.9	8,870	23.0				
15–24 years					2,770	91.6	2,660	89.4	29,950	89.6	31,090	94.5	32,500	89.0	33,750	94.0
25–34 years	3,300	102.1	4,130	125.5	41,830	115.2	48,200	130.2	45,860	115.5	52,660	130.2				
35–44 years	7,020	193.4	8,000	223.6	82,160	204.2	88,520	223.8	90,050	204.7	97,250	225.1				
45–54 years	11,690	417.8	12,130	450.5	131,170	427.5	130,900	443.2	143,080	426.3	142,510	442.2				
55–64 years	18,570	1,022.0	19,430	1,103.8	210,410	1,055.5	214,230	1,097.6	230,610	1,061.8	233,810	1,096.8				
65–74 years	38,200	2,516.6	39,730	2,604.3	420,470	2,481.9	437,210	2,555.9	460,380	2,488.0	477,190	2,553.0				
75–84 years	55,080	5,686.4	54,370	5,748.4	610,060	5,707.4	601,690	5,765.8	667,110	5,710.6	656,890	5,762.2				
85 years and over	49,590	15,364.0	47,630	15,279.7	537,330	15,206.0	519,080	15,216.4	590,340	15,301.7	568,790	15,269.5				
Not stated	90	...	70	...	980	...	880	...	1,050	...	950	...				
Age-adjusted rate ³	470.1	...	494.3	...	476.7	...	493.1	...	477.7	...	492.9				
All races, male¹																
All ages	95,320	881.8	96,180	900.9	1,053,420	879.3	1,066,360	900.0	1,152,240	880.3	1,164,730	899.9				
Under 1 year	} 1,830	75.0	1,810	74.7	14,220	² 809.5	14,170	² 787.9	15,550	² 814.1	15,700	² 795.7				
1–4 years					2,710	37.7	3,040	41.8	2,910	37.1	3,320	41.7				
5–14 years					4,560	25.0	4,780	26.5	4,920	24.8	5,260	26.6				
15–24 years					2,180	140.2	2,010	131.4	22,510	130.8	23,480	139.7	24,370	129.8	25,480	138.9
25–34 years	2,180	134.9	2,920	177.4	29,580	162.8	34,180	184.9	32,430	163.3	37,440	185.3				
35–44 years	4,610	255.3	5,340	300.2	54,890	274.2	60,070	305.9	60,140	274.9	65,960	307.7				
45–54 years	7,380	539.0	7,850	595.8	82,570	549.9	82,900	574.5	89,960	547.7	90,590	575.5				
55–64 years	11,360	1,311.8	11,730	1,399.8	126,800	1,335.2	129,100	1,390.0	138,970	1,343.1	140,710	1,387.3				
65–74 years	21,700	3,194.8	22,340	3,281.3	240,030	3,170.1	246,680	3,235.8	262,150	3,170.3	269,490	3,235.6				
75–84 years	27,810	7,240.6	26,640	7,155.6	297,830	7,048.7	295,370	7,222.2	325,780	7,054.6	322,090	7,207.2				
85 years and over	16,250	17,434.6	15,470	17,378.8	177,030	17,429.6	171,980	17,866.0	194,360	17,525.7	188,060	17,893.4				
Not stated	30	...	60	...	680	...	600	...	710	...	630	...				
Age-adjusted rate ³	597.9	...	625.8	...	603.2	...	627.7	...	603.9	...	627.7				
All races, female¹																
All ages	94,120	835.4	95,310	855.7	1,048,480	839.4	1,044,790	842.3	1,149,670	842.4	1,142,150	842.7				
Under 1 year	} 1,320	56.7	1,530	66.2	10,610	² 631.8	11,650	² 679.6	11,560	² 633.4	12,550	² 667.2				
1–4 years					3,210	18.5	3,290	19.0	3,560	18.8	3,610	19.2				
5–14 years					590	40.1	650	45.0	7,440	45.9	7,610	47.2	8,140	45.9	8,260	47.0
15–24 years					1,120	69.3	1,210	73.6	12,250	67.5	14,020	75.7	13,430	67.7	15,230	75.3
25–34 years	2,400	131.6	2,660	147.9	27,270	134.8	28,460	142.8	29,910	135.3	31,290	143.7				
35–44 years	4,310	301.7	4,280	311.2	48,600	310.2	47,990	317.7	53,120	309.9	51,920	315.0				
45–54 years	7,210	758.2	7,700	834.9	83,610	800.9	85,130	832.0	91,640	805.8	93,110	833.2				
55–64 years	16,500	1,967.6	17,390	2,058.6	180,440	1,925.7	190,530	2,009.4	198,230	1,936.8	207,700	2,004.4				
65–74 years	27,270	4,665.1	27,730	4,835.0	312,230	4,830.7	306,320	4,827.2	341,330	4,832.0	334,800	4,830.5				
75–84 years	33,340	14,518.1	32,150	14,446.8	360,290	14,311.3	347,100	14,176.0	395,980	14,415.0	380,730	14,243.5				
85 years and over	50	...	10	...	300	...	280	...	340	...	320	...				
Not stated	50	...	10	...	300	...	280	...	340	...	320	...				
Age-adjusted rate ³	363.1	...	383.7	...	370.3	...	381.0	...	371.7	...	380.6				
White																
All ages	163,880	898.2	163,820	907.2	1,813,120	895.9	1,815,010	903.3	1,985,560	898.0	1,984,160	903.9				
Under 1 year	} 2,140	56.7	2,220	59.2	16,320	² 599.8	16,830	² 613.4	17,600	² 595.2	18,500	² 615.8				
1–4 years					3,590	32.1	3,680	32.7	3,840	31.6	4,020	32.7				
5–14 years					5,720	20.4	5,790	20.7	6,260	20.4	6,430	21.0				
15–24 years					1,930	80.2	1,820	76.8	21,140	79.4	21,880	83.4	22,910	78.8	23,780	83.1
25–34 years	2,330	89.2	2,950	110.5	29,980	101.9	33,980	112.8	32,580	101.4	37,170	112.9				
35–44 years	4,980	165.4	5,970	200.8	59,660	178.7	63,910	194.2	65,570	179.6	70,280	195.5				
45–54 years	9,370	394.1	9,110	397.1	101,180	387.6	99,720	395.7	110,140	385.6	108,800	395.6				
55–64 years	14,840	948.9	15,880	1,046.9	169,790	989.2	173,880	1,032.4	186,260	996.1	189,800	1,031.8				
65–74 years	32,880	2,459.4	33,710	2,501.0	362,460	2,425.7	378,520	2,500.2	397,100	2,433.4	413,180	2,497.5				
75–84 years	50,010	5,707.8	48,400	5,653.2	550,110	5,687.5	539,810	5,705.9	601,110	5,686.9	589,290	5,700.8				
85 years and over	45,330	15,522.5	43,700	15,484.7	492,540	15,404.5	476,350	15,352.8	541,510	15,516.0	522,220	15,409.3				
Not stated	70	...	50	...	640	...	640	...	690	...	690	...				
Age-adjusted rate ³	449.1	...	466.7	...	454.2	...	467.4	...	455.0	...	467.5				

See footnotes at end of table.

Table 5. Provisional number of deaths and death rates, by age, race, and sex, and age-adjusted death rates by race and sex: United States, November 1996 and 1997, cumulative figures 1996 and 1997, and 12 months ending with November 1996 and 1997—Con.

[Data are provisional, estimated from a 10-percent sample of deaths. Age-specific rates on an annual basis per 100,000 population in specified group; age-adjusted rates per 100,000 U.S. standard population; see [Technical notes](#). Because of rounding of estimates, figures may not add to totals. For method of computation and information on standard errors of the estimates, see [Technical notes](#)]

Age, race, and sex	November				January–November				12 months ending with November			
	1997		1996		1997		1996		1997		1996	
	Number	Rate	Number	Rate	Number	Rate	Number	Rate	Number	Rate	Number	Rate
White male												
All ages	81,840	911.5	81,550	918.2	899,970	903.8	907,510	920.0	984,400	904.8	991,980	920.7
Under 1 year	} 1,220	63.1	1,250	65.0	9,430	² 676.4	9,330	² 662.3	10,120	² 667.5	10,390	² 673.8
1–4 years					1,920	33.3	2,170	37.8	2,040	32.7	2,380	37.8
5–14 years					3,340	23.1	3,410	23.8	3,610	23.0	3,780	24.1
15–24 years					1,510	121.3	1,370	111.8	15,530	112.8	16,210	120.4
25–34 years	1,610	121.9	2,150	159.3	21,370	143.8	24,500	161.3	23,280	143.3	26,880	161.8
35–44 years	3,350	221.3	3,990	267.1	40,850	243.3	43,860	265.7	44,900	244.7	48,330	268.0
45–54 years	5,990	509.1	5,920	521.6	64,030	495.6	63,710	511.7	69,580	492.3	69,840	514.2
55–64 years	9,190	1,218.9	9,740	1,333.5	103,480	1,251.1	105,450	1,301.3	113,390	1,258.5	115,010	1,299.4
65–74 years	18,870	3,128.3	19,020	3,137.4	208,520	3,097.5	214,960	3,161.6	227,850	3,099.2	234,900	3,162.4
75–84 years	25,290	7,253.5	23,990	7,093.5	270,080	7,037.7	266,460	7,159.8	295,280	7,038.9	290,620	7,145.8
85 years and over	14,780	17,699.1	14,080	17,636.1	160,930	17,674.3	156,990	18,051.1	177,050	17,794.0	171,760	18,080.0
Not stated	30	...	40	...	490	...	450	...	510	...	470	...
Age-adjusted rate ³	...	571.6	...	591.0	...	573.7	...	593.4	...	574.1	...	594.0
White female												
All ages	82,040	885.3	82,270	896.6	913,150	888.3	907,500	887.1	1,001,160	891.4	992,180	887.7
Under 1 year	} 920	50.1	970	53.1	6,890	² 519.1	7,500	² 562.7	7,480	² 519.1	8,120	² 555.4
1–4 years					1,670	30.6	1,510	27.6	1,810	30.6	1,640	27.4
5–14 years					2,380	17.5	2,380	17.5	2,650	17.8	2,640	17.7
15–24 years					430	37.0	450	39.3	5,620	43.9	5,670	44.4
25–34 years	720	55.8	800	60.6	8,610	59.2	9,480	63.5	9,300	58.5	10,290	63.1
35–44 years	1,620	108.2	1,990	134.6	18,800	113.2	20,050	122.2	20,660	113.8	21,950	122.5
45–54 years	3,380	281.5	3,190	275.2	37,150	281.8	36,010	282.4	40,560	281.1	38,960	279.9
55–64 years	5,650	697.6	6,140	780.7	66,310	745.6	68,430	783.1	72,880	752.3	74,790	783.6
65–74 years	14,020	1,910.8	14,690	1,980.7	153,940	1,874.9	163,570	1,960.7	169,250	1,887.5	178,270	1,955.6
75–84 years	24,720	4,686.2	24,410	4,712.8	280,030	4,799.6	273,350	4,763.4	305,820	4,797.2	298,670	4,763.5
85 years and over	30,540	14,646.0	29,620	14,636.0	331,610	14,500.4	319,350	14,302.8	364,460	14,607.6	350,460	14,369.0
Not stated	40	...	10	...	150	...	190	...	180	...	220	...
Age-adjusted rate ³	...	346.1	...	361.6	...	353.3	...	361.9	...	354.6	...	361.5
Black												
All ages	22,100	788.3	23,960	868.3	250,630	807.8	260,060	846.4	274,820	810.9	283,570	844.6
Under 1 year	} 890	120.6	1,010	137.5	7,700	² 1,500.3	8,110	² 1,425.7	8,600	² 1,522.1	8,830	² 1,401.6
1–4 years					1,140	53.5	1,530	68.5	1,240	53.3	1,660	67.4
5–14 years					1,610	28.8	1,800	33.2	1,780	29.3	1,920	32.0
15–24 years					720	156.6	680	150.5	7,420	146.0	7,990	159.3
25–34 years	850	193.0	1,010	228.0	10,330	210.1	12,660	255.5	11,600	215.7	13,840	255.7
35–44 years	1,780	395.2	1,860	423.0	20,180	405.9	22,330	460.3	21,970	404.5	24,470	462.1
45–54 years	2,040	681.3	2,660	934.4	26,550	813.4	27,460	882.4	29,090	816.0	29,780	877.2
55–64 years	3,240	1,760.6	3,210	1,805.5	35,580	1,762.7	35,800	1,816.9	38,900	1,765.8	39,000	1,811.4
65–74 years	4,590	3,376.4	5,230	3,895.4	50,010	3,320.6	51,420	3,444.6	54,660	3,324.8	56,070	3,437.8
75–84 years	4,280	5,999.2	5,010	7,165.5	51,170	6,489.0	53,580	6,949.1	56,530	6,558.0	58,620	6,953.7
85 years and over	3,700	15,157.1	3,270	13,756.5	38,620	14,432.7	37,130	14,376.7	42,050	14,450.2	40,480	14,354.6
Not stated	10	...	20	...	320	...	240	...	340	...	260	...
Age-adjusted rate ³	...	675.8	...	763.3	...	698.9	...	743.1	...	701.9	...	741.1
Black male												
All ages	11,600	871.1	12,510	955.0	131,820	894.7	138,820	952.2	144,270	896.6	151,060	948.2
Under 1 year	} 560	149.4	500	134.2	4,290	² 1,644.1	4,330	² 1,507.2	4,840	² 1,692.3	4,780	² 1,498.4
1–4 years					680	62.0	760	66.7	750	63.6	820	65.7
5–14 years					1,010	35.4	1,070	38.4	1,090	35.3	1,140	37.4
15–24 years					590	255.7	560	247.0	5,980	235.2	6,410	255.7
25–34 years	520	248.9	650	309.5	7,110	304.6	8,670	369.8	7,910	310.2	9,500	370.7
35–44 years	1,080	511.5	1,250	607.8	12,530	539.0	14,640	645.5	13,640	536.4	15,950	645.0
45–54 years	1,240	913.2	1,700	1,317.7	16,590	1,121.6	17,220	1,220.6	18,180	1,125.7	18,660	1,213.3
55–64 years	1,900	2,380.7	1,780	2,307.8	20,310	2,318.4	20,900	2,439.4	22,370	2,340.0	22,630	2,417.7
65–74 years	2,390	4,196.0	2,870	5,111.5	26,920	4,274.2	27,680	4,440.7	29,380	4,270.3	30,160	4,428.8
75–84 years	2,130	8,048.1	2,160	8,392.4	23,150	7,952.2	24,670	8,731.4	25,470	8,009.4	26,930	8,715.2
85 years and over	1,190	16,641.8	1,020	14,640.0	13,070	16,684.5	12,320	16,578.6	14,010	16,482.4	13,400	16,543.2
Not stated	—	...	20	...	180	...	150	...	190	...	160	...
Age-adjusted rate ³	...	882.3	...	986.1	...	911.5	...	982.0	...	914.6	...	977.5

See footnotes at end of table.

Table 5. Provisional number of deaths and death rates, by age, race, and sex, and age-adjusted death rates by race and sex: United States, November 1996 and 1997, cumulative figures 1996 and 1997, and 12 months ending with November 1996 and 1997—Con.

[Data are provisional, estimated from a 10-percent sample of deaths. Age-specific rates on an annual basis per 100,000 population in specified group; age-adjusted rates per 100,000 U.S. standard population; see [Technical notes](#). Because of rounding of estimates, figures may not add to totals. For method of computation and information on standard errors of the estimates, see [Technical notes](#)]

Age, race, and sex	November				January–November				12 months ending with November							
	1997		1996		1997		1996		1997		1996					
	Number	Rate	Number	Rate	Number	Rate	Number	Rate	Number	Rate	Number	Rate				
Black female																
All ages	10,500	713.3	11,450	790.0	118,810	729.3	121,240	751.0	130,550	733.5	132,500	751.0				
Under 1 year	} 320	88.1	520	143.8	3,420	² 1,348.6	3,780	² 1,356.2	3,750	² 1,344.1	4,040	² 1,299.0				
1–4 years					460	43.7	770	69.5	490	42.7	840	69.2				
5–14 years					600	21.9	730	27.0	680	22.7	780	26.4				
15–24 years					130	56.8	130	57.7	1,440	56.5	1,580	63.9	1,620	58.6	1,720	62.9
25–34 years					330	142.5	360	154.5	3,230	124.0	3,990	152.6	3,690	130.5	4,340	152.3
35–44 years	710	296.7	610	260.7	7,640	289.4	7,700	297.9	8,330	288.4	8,520	301.9				
45–54 years	800	488.9	960	616.7	9,960	558.6	10,250	602.1	10,910	559.5	11,120	598.8				
55–64 years	1,340	1,285.7	1,430	1,420.7	15,270	1,337.7	14,900	1,336.6	16,530	1,325.6	16,370	1,345.1				
65–74 years	2,200	2,785.3	2,360	3,021.2	23,090	2,636.8	23,730	2,728.9	25,280	2,644.4	25,900	2,726.3				
75–84 years	2,160	4,813.2	2,850	6,450.8	28,020	5,632.4	28,910	5,917.2	31,060	5,709.6	31,690	5,934.5				
85 years and over	2,510	14,542.1	2,250	13,390.2	25,540	13,500.2	24,810	13,502.2	28,040	13,611.7	27,080	13,472.6				
Not stated	10	...	–	...	140	...	90	...	150	...	100	...				
Age-adjusted rate ³	515.7	...	588.4	...	533.7	...	557.9	...	536.1	...	557.6				

... Category not applicable.

– Quantity zero.

¹Includes races other than white and black.

²Death rates under 1 year (based on population estimates) differ from infant mortality rates (based on live births); see [table 9](#) for infant mortality rates.

³For method of computation, see [Technical notes](#).

Table 6. Provisional number of deaths and death rates for 72 selected causes, Human immunodeficiency virus infection, and Alzheimer's disease: United States, November 1996 and 1997, cumulative figures 1996 and 1997, and 12 months ending with November 1996 and 1997

[Data are provisional, estimated from a 10-percent sample of deaths. Rates on an annual basis per 100,000 estimated population. Because of rounding of estimates, figures may not add to totals. For method of computation and information on standard errors of the estimates, see [Technical notes](#). For explanation of asterisks preceding cause-of-death categories, see [Technical notes](#)]

Cause of death (Based on the <i>Ninth Revision, International Classification of Diseases, 1975</i>)	November				January–November				12 months ending with November			
	1997		1996		1997		1996		1997		1996	
	Number	Rate	Number	Rate	Number	Rate	Number	Rate	Number	Rate	Number	Rate
All causes	189,000	858.1	191,000	877.8	2,102,000	859.0	2,111,000	870.5	2,302,000	861.0	2,308,000	871.0
Shigellosis and amebiasis	—	*	—	*	—	*	—	*	—	*	—	*
Certain other intestinal infections	120	0.5	20	*	770	0.3	730	0.3	860	0.3	780	0.3
Tuberculosis	100	*	130	0.6	990	0.4	920	0.4	1,070	0.4	1,070	0.4
Tuberculosis of respiratory system	70	*	110	0.5	750	0.3	730	0.3	820	0.3	850	0.3
Other tuberculosis	20	*	20	*	230	0.1	190	0.1	250	0.1	220	0.1
Whooping cough	—	*	—	*	30	*	10	*	30	*	10	*
Streptococcal sore throat, scarlatina, and erysipelas	—	*	—	*	—	*	—	*	—	*	—	*
Meningococcal infection	30	*	20	*	300	0.1	250	0.1	320	0.1	250	0.1
Septicemia	1,830	8.3	1,860	8.5	20,180	8.2	19,680	8.1	22,170	8.3	21,360	8.1
Acute poliomyelitis	—	*	—	*	—	*	—	*	—	*	—	*
Measles	—	*	—	*	10	*	—	*	10	*	—	*
Viral hepatitis	310	1.4	380	1.7	3,680	1.5	3,500	1.4	4,000	1.5	3,800	1.4
Syphilis	—	*	—	*	40	*	30	*	40	*	30	*
All other infectious and parasitic diseases ¹	1,370	6.2	2,960	13.6	20,030	8.2	35,290	14.5	22,690	8.5	38,940	14.7
Malignant neoplasms, including neoplasms of lymphatic and hematopoietic tissues	44,720	202.6	45,940	210.6	491,350	200.8	497,110	204.9	536,580	200.7	541,350	204.3
Malignant neoplasms of lip, oral cavity, and pharynx	580	2.6	630	2.9	7,200	2.9	7,150	2.9	7,900	3.0	7,770	2.9
Malignant neoplasms of digestive organs and peritoneum	10,540	47.7	11,010	50.5	114,440	46.8	116,330	48.0	124,950	46.7	126,650	47.8
Malignant neoplasms of respiratory and intrathoracic organs	13,200	59.8	13,350	61.2	143,700	58.7	145,310	59.9	157,450	58.9	158,240	59.7
Malignant neoplasm of breast	3,250	14.7	3,320	15.2	37,450	15.3	40,180	16.6	40,800	15.3	43,830	16.5
Malignant neoplasms of genital organs	4,860	22.0	5,610	25.7	54,650	22.3	55,300	22.8	59,580	22.3	60,260	22.7
Malignant neoplasms of urinary organs	1,910	8.7	2,120	9.7	21,770	8.9	21,170	8.7	23,630	8.8	23,000	8.7
Malignant neoplasms of all other and unspecified sites	5,510	25.0	5,460	25.0	59,820	24.4	60,670	25.0	65,410	24.5	66,000	24.9
Leukemia	1,570	7.1	1,590	7.3	18,970	7.7	18,770	7.7	20,540	7.7	20,410	7.7
Other malignant neoplasms of lymphatic and hematopoietic tissues	3,290	14.9	2,850	13.1	33,360	13.6	32,240	13.3	36,320	13.6	35,190	13.3
Benign neoplasms, carcinoma in situ, and neoplasms of uncertain behavior and of unspecified nature	740	3.3	580	2.6	7,220	2.9	6,960	2.9	7,910	3.0	7,670	2.9
Diabetes mellitus	5,280	23.9	5,500	25.2	56,420	23.1	56,030	23.1	61,860	23.1	60,760	22.9
Nutritional deficiencies	380	1.7	210	1.0	3,400	1.4	3,490	1.4	3,700	1.4	3,900	1.5
Anemias	510	2.3	410	1.9	3,960	1.6	3,660	1.5	4,280	1.6	4,090	1.5
Meningitis	70	*	40	*	560	0.2	540	0.2	610	0.2	580	0.2
Major cardiovascular diseases	76,880	348.2	77,590	355.7	852,060	348.2	859,690	354.5	934,010	349.3	941,440	355.3
Diseases of heart	59,470	269.4	59,350	272.1	655,330	267.8	665,540	274.4	718,930	268.9	728,580	275.0
Rheumatic fever and rheumatic heart disease	440	2.0	410	1.9	4,190	1.7	4,540	1.9	4,510	1.7	4,940	1.9
Hypertensive heart disease	2,230	10.1	1,910	8.7	24,180	9.9	23,860	9.8	26,330	9.8	25,930	9.8
Hypertensive heart and renal disease	130	0.6	200	0.9	2,000	0.8	2,000	0.8	2,210	0.8	2,220	0.8
Ischemic heart disease	37,650	170.5	38,610	177.0	420,210	171.7	431,310	177.8	461,900	172.8	472,190	178.2
Acute myocardial infarction	16,710	75.7	17,390	79.7	187,990	76.8	195,320	80.5	206,550	77.3	213,470	80.6
Other acute and subacute forms of ischemic heart disease	310	1.4	140	0.6	2,700	1.1	2,330	1.0	3,070	1.1	2,600	1.0
Angina pectoris	10	*	40	*	560	0.2	640	0.3	600	0.2	690	0.3
Old myocardial infarction and other forms of chronic ischemic heart disease	20,620	93.4	21,050	96.5	228,950	93.6	233,020	96.1	251,680	94.1	255,430	96.4
Other diseases of endocardium	1,450	6.6	1,590	7.3	15,430	6.3	15,060	6.2	16,860	6.3	16,580	6.3
All other forms of heart disease	17,570	79.6	16,630	76.2	189,320	77.4	188,770	77.8	207,120	77.5	206,710	78.0
Hypertension with or without renal disease	960	4.3	1,080	4.9	11,610	4.7	11,250	4.6	12,550	4.7	12,330	4.7
Cerebrovascular diseases	12,860	58.2	13,790	63.2	144,770	59.2	144,640	59.6	158,690	59.4	158,350	59.8
Intracerebral and other intracranial hemorrhage	2,220	10.0	2,290	10.5	23,240	9.5	21,340	8.8	25,400	9.5	23,320	8.8
Cerebral thrombosis and unspecified occlusion of cerebral arteries	850	3.8	1,290	5.9	10,910	4.4	11,410	4.7	11,950	4.5	12,570	4.7
Cerebral embolism	100	*	150	0.7	540	0.2	710	0.3	640	0.2	770	0.3
All other and late effects of cerebrovascular diseases	9,690	43.9	10,060	46.1	110,080	45.0	111,170	45.8	120,690	45.1	121,690	45.9

See footnotes at end of table.

Table 6. Provisional number of deaths and death rates for 72 selected causes, Human immunodeficiency virus infection, and Alzheimer's disease: United States, November 1996 and 1997, cumulative figures 1996 and 1997, and 12 months ending with November 1996 and 1997—Con.

[Data are provisional, estimated from a 10-percent sample of deaths. Rates on an annual basis per 100,000 estimated population. Because of rounding of estimates, figures may not add to totals. For method of computation and information on standard errors of the estimates, see [Technical notes](#). For explanation of asterisks preceding cause-of-death categories, see [Technical notes](#)]

Cause of death (Based on the <i>Ninth Revision, International Classification of Diseases, 1975</i>)	November		January–November				12 months ending with November						
	1997		1996		1997		1996		1997		1996		
	Number	Rate	Number	Rate	Number	Rate	Number	Rate	Number	Rate	Number	Rate	
Major cardiovascular diseases—Con.													
Atherosclerosis	440	1,110	5.0	1,310	6.0	14,460	5.9	14,290	5.9	15,740	5.9	15,890	6.0
Other diseases of arteries, arterioles, and capillaries441–448	2,480	11.2	2,050	9.4	25,900	10.6	23,980	9.9	28,100	10.5	26,290	9.9
Acute bronchitis and bronchiolitis466	40	*	—	*	510	0.2	340	0.1	580	0.2	360	0.1
Pneumonia and influenza480–487	6,320	28.6	6,260	28.7	75,690	30.9	73,310	30.2	83,930	31.4	80,510	30.4
Pneumonia480–486	6,320	28.6	6,210	28.5	74,920	30.6	72,810	30.0	83,000	31.0	79,970	30.2
Influenza487	—	*	40	*	770	0.3	500	0.2	930	0.3	530	0.2
Chronic obstructive pulmonary diseases and allied conditions490–496	8,360	37.9	8,150	37.4	98,750	40.3	96,090	39.6	108,130	40.4	104,560	39.5
Bronchitis, chronic and unspecified490–491	130	0.6	190	0.9	2,640	1.1	2,730	1.1	2,860	1.1	2,980	1.1
Emphysema492	1,470	6.7	1,270	5.8	16,370	6.7	15,110	6.2	18,050	6.8	16,360	6.2
Asthma493	450	2.0	410	1.9	4,810	2.0	4,680	1.9	5,280	2.0	5,150	1.9
Other chronic obstructive pulmonary diseases and allied conditions494–496	6,310	28.6	6,280	28.8	74,930	30.6	73,560	30.3	81,950	30.7	80,070	30.2
Ulcer of stomach and duodenum531–533	340	1.5	280	1.3	4,570	1.9	4,400	1.8	4,950	1.9	4,840	1.8
Appendicitis540–543	20	*	50	*	310	0.1	430	0.2	350	0.1	440	0.2
Hernia of abdominal cavity and intestinal obstruction without mention of hernia550–553,560	440	2.0	540	2.5	5,690	2.3	5,890	2.4	6,250	2.3	6,330	2.4
Chronic liver disease and cirrhosis571	2,100	9.5	2,170	9.9	23,360	9.5	22,340	9.2	25,490	9.5	24,250	9.2
Cholelithiasis and other disorders of gallbladder574–575	190	0.9	180	0.8	2,420	1.0	2,420	1.0	2,680	1.0	2,680	1.0
Nephritis and nephrotic syndrome, and nephrosis580–589	2,310	10.5	2,430	11.1	24,410	10.0	24,420	10.1	26,970	10.1	26,790	10.1
Acute glomerulonephritis and nephrotic syndrome580–581	10	*	20	*	280	0.1	190	0.1	310	0.1	210	0.1
Chronic glomerulonephritis, nephritis and nephropathy, not specified as acute or chronic, and renal sclerosis, unspecified582–583,587	100	*	110	0.5	1,420	0.6	1,560	0.6	1,650	0.6	1,710	0.6
Renal failure, disorders resulting from impaired renal function, and small kidney of unknown cause584–586,588–589	2,200	10.0	2,300	10.5	22,720	9.3	22,670	9.3	25,010	9.4	24,870	9.4
Infections of kidney590	70	*	70	*	610	0.2	820	0.3	690	0.3	860	0.3
Hyperplasia of prostate600	30	*	30	*	370	0.1	380	0.2	400	0.1	420	0.2
Complications of pregnancy, childbirth, and the puerperium630–676	30	*	20	*	230	0.1	250	0.1	260	0.1	270	0.1
Pregnancy with abortive outcome630–638	—	*	—	*	40	*	20	*	40	*	20	*
Other complications of pregnancy, childbirth, and the puerperium640–676	30	*	20	*	190	0.1	230	0.1	220	0.1	250	0.1
Congenital anomalies740–759	920	4.2	730	3.3	10,630	4.3	10,610	4.4	11,500	4.3	11,620	4.4
Certain conditions originating in the perinatal period760–779	930	4.2	1,190	5.5	11,470	4.7	11,890	4.9	12,470	4.7	12,930	4.9
Birth trauma, intrauterine hypoxia, birth asphyxia, and respiratory distress syndrome767–769	140	0.6	210	1.0	1,790	0.7	1,920	0.8	2,020	0.8	2,070	0.8
Other conditions originating in the perinatal period760–766,770–779	790	3.6	980	4.5	9,670	3.9	9,970	4.1	10,450	3.9	10,860	4.1
Symptoms, signs, and ill-defined conditions780–799	3,890	17.6	3,300	15.1	42,770	17.5	37,890	15.6	46,650	17.4	41,690	15.7
All other diseases	Residual	19,640	89.0	18,430	84.5	211,120	86.3	199,330	82.2	230,830	86.3	218,480	82.5
Accidents and adverse effects	E800–E949	7,410	33.6	7,640	35.0	82,420	33.7	83,120	34.3	90,060	33.7	90,380	34.1
Motor vehicle accidents	E810–E825	3,580	16.2	3,830	17.6	39,780	16.2	39,950	16.5	43,520	16.3	43,410	16.4
All other accidents and adverse effects	E800–E807,E826–E949	3,830	17.3	3,810	17.5	42,640	17.4	43,160	17.8	46,540	17.4	46,970	17.7
Suicide	E950–E959	2,450	11.1	2,460	11.3	26,110	10.7	27,810	11.5	28,470	10.6	29,900	11.3
Homicide and legal intervention	E960–E978	1,470	6.7	1,760	8.1	17,280	7.1	19,360	8.0	18,810	7.0	21,170	8.0
All other external causes	E980–E999	130	0.6	170	0.8	2,160	0.9	2,180	0.9	2,300	0.9	2,370	0.9
Human immunodeficiency virus infection ²	*042–*044	930	4.2	2,250	10.3	14,720	6.0	29,280	12.1	16,690	6.2	32,390	12.2
Alzheimer's disease331.0	2,080	9.4	1,870	8.6	21,200	8.7	19,820	8.2	23,320	8.7	21,880	8.3

– Quantity zero. * Figure does not meet standards of reliability or precision; see [Technical notes](#).
¹Includes data for deaths due to Human immunodeficiency virus infection (categories *042–*044) shown separately below; see [Technical notes](#).
²Included in All other infectious and parasitic diseases shown above.

NOTES: Figures include all revisions received from the States. Cumulative and 12-month figures for the current year reflect revisions for previous months, and figures for earlier years may differ from those previously published.

Table 7. Provisional number of deaths and death rates for 16 selected subcategories of Malignant neoplasms, including neoplasms of lymphatic and hematopoietic tissues: United States, November 1996 and 1997, cumulative figures 1996 and 1997, and 12 months ending with November 1996 and 1997

[Data are provisional, estimated from a 10-percent sample of deaths. Rates on an annual basis per 100,000 estimated population. Because of rounding of estimates, figures may not add to totals. For method of computation and information on standard errors of the estimates, see [Technical notes](#)]

Cause of death (Based on the <i>Ninth Revision, International Classification of Diseases, 1975</i>)	November				January–November				12 months ending with November			
	1997		1996		1997		1996		1997		1996	
	Number	Rate	Number	Rate	Number	Rate	Number	Rate	Number	Rate	Number	Rate
Malignant neoplasms, including neoplasms of lymphatic and hematopoietic tissues ¹140–208	44,720	202.6	45,940	210.6	491,350	200.8	497,110	204.9	536,580	200.7	541,350	204.3
Malignant neoplasm of esophagus150	810	3.7	880	4.0	9,970	4.1	10,240	4.2	10,870	4.1	11,000	4.2
Malignant neoplasm of stomach151	1,100	5.0	1,390	6.4	11,910	4.9	12,400	5.1	12,900	4.8	13,440	5.1
Malignant neoplasms of colon, rectum, rectosigmoid junction, and anus153,154	4,950	22.4	4,860	22.3	50,930	20.8	52,520	21.6	55,660	20.8	56,960	21.5
Malignant neoplasm of pancreas157	2,220	10.0	2,330	10.7	25,050	10.2	25,140	10.4	27,510	10.3	27,520	10.4
Malignant neoplasms of trachea, bronchus, and lung162	12,790	57.9	12,900	59.1	139,200	56.9	140,500	57.9	152,450	57.0	152,990	57.7
Malignant melanoma of skin172	510	2.3	550	2.5	6,800	2.8	6,460	2.7	7,370	2.8	6,930	2.6
Malignant neoplasm of cervix uteri180	320	1.4	430	2.0	4,000	1.6	4,120	1.7	4,360	1.6	4,540	1.7
Malignant neoplasms of body of uterus and of uterus, part unspecified179,182	580	2.6	440	2.0	5,750	2.3	5,280	2.2	6,260	2.3	5,810	2.2
Malignant neoplasm of ovary183.0	1,110	5.0	1,220	5.6	12,570	5.1	12,530	5.2	13,550	5.1	13,680	5.2
Malignant neoplasm of prostate185	2,690	12.2	3,340	15.3	30,540	12.5	31,580	13.0	33,460	12.5	34,230	12.9
Malignant neoplasm of bladder188	830	3.8	920	4.2	10,880	4.4	10,180	4.2	11,960	4.5	11,060	4.2
Malignant neoplasms of kidney and other and unspecified urinary organs189	1,080	4.9	1,210	5.5	10,890	4.4	10,990	4.5	11,670	4.4	11,940	4.5
Malignant neoplasms of brain and other and unspecified parts of nervous system191,192	980	4.4	1,010	4.6	10,270	4.2	10,640	4.4	11,230	4.2	11,640	4.4
Hodgkin's disease201	130	0.6	150	0.7	1,300	0.5	1,360	0.6	1,400	0.5	1,460	0.6
Malignant lymphoma other than Hodgkin's disease200,202	2,320	10.5	1,810	8.3	22,500	9.2	21,160	8.7	24,520	9.2	23,090	8.7
Multiple myeloma and other immunoproliferative neoplasms203	840	3.8	890	4.1	9,560	3.9	9,720	4.0	10,400	3.9	10,640	4.0

¹Includes figures for subcategories not shown below.

NOTES: Figures include all revisions received from the States. Cumulative and 12-month figures for the current year reflect revisions received for previous months, and figures for earlier years may differ from those previously published.

Table 8. Provisional number of deaths and death rates for firearm mortality: United States, November 1996 and 1997, cumulative figures 1996 and 1997, and 12 months ending with November 1996 and 1997

[Data are provisional, estimated from a 10-percent sample of deaths. Rates on an annual basis per 100,000 estimated population. Because of rounding of estimates, figures may not add to totals. For method of computation and information on standard errors of the estimates, see [Technical notes](#)]

Cause of death (Based on the <i>Ninth Revision, International Classification of Diseases, 1975</i>)	November				January–November				12 months ending with November			
	1997		1996		1997		1996		1997		1996	
	Number	Rate	Number	Rate	Number	Rate	Number	Rate	Number	Rate	Number	Rate
Injury by firearmsE922,E955.0–E955.4,E965.0–965.4,E970,E985.0–E985.4	2,820	12.8	2,760	12.7	29,340	12.0	31,700	13.1	32,100	12.0	34,630	13.1
Accident caused by firearm missileE922	130	0.6	150	0.7	1,020	0.4	1,180	0.5	1,180	0.4	1,370	0.5
Suicide by firearmsE955.0–E955.4	1,600	7.2	1,440	6.6	15,730	6.4	16,810	6.9	17,260	6.5	18,120	6.8
Homicide and legal intervention by firearmsE965.0–E965.4,E970	1,090	4.9	1,160	5.3	12,360	5.0	13,510	5.6	13,430	5.0	14,920	5.6
Injury by firearms, undetermined whether accidentally or purposely inflictedE985.0–E985.4	–	*	10	*	230	0.1	210	0.1	230	0.1	230	0.1

– Quantity zero.

* Figure does not meet standards of reliability or precision; see [Technical notes](#).

NOTES: Figures include all revisions received from the States. Cumulative and 12-month figures for the current year reflect revisions received for previous months, and figures for earlier years may differ from those previously published.

Table 9. Provisional number of deaths under 1 year and infant mortality rates, by age and for 10 selected causes: United States, November 1996 and 1997, cumulative figures 1996 and 1997, and 12 months ending with November 1996 and 1997

[Data are provisional, estimated from a 10-percent sample of deaths. Rates on an annual basis per 100,000 live births. Because of rounding of estimates, figures may not add to totals. For method of computation and information on standard errors of the estimates, see [Technical notes](#)]

Age and cause of death (Based on the <i>Ninth Revision, International Classification of Diseases, 1975</i>)	November				January–November				12 months ending with November			
	1997		1996		1997		1996		1997		1996	
	Number	Rate	Number	Rate	Number	Rate	Number	Rate	Number	Rate	Number	Rate
Total, under 1 year	2,000	660.0	2,300	716.8	24,800	701.8	25,800	725.4	27,100	704.6	28,200	727.2
Under 28 days	1,430	463.5	1,470	466.9	16,280	459.9	17,140	481.6	17,620	457.9	18,660	480.4
28 days–11 months	590	191.2	790	250.9	8,550	241.5	8,670	243.6	9,480	246.4	9,590	246.9
Certain gastrointestinal diseases	20	*	10	*	160	4.5	210	5.9	170	4.4	220	5.7
Pneumonia and influenza	10	*	30	*	210	5.9	280	7.9	260	6.8	320	8.2
Congenital anomalies	500	162.1	380	120.7	5,850	165.3	5,990	168.3	6,380	165.8	6,420	165.3
Disorders relating to short gestation and unspecified low birthweight	240	77.8	280	88.9	3,000	84.8	3,350	94.1	3,220	83.7	3,580	92.2
Birth trauma	10	*	10	*	130	3.7	160	4.5	140	3.6	190	4.9
Intrauterine hypoxia and birth asphyxia	30	*	50	*	460	13.0	500	14.0	490	12.7	500	12.9
Respiratory distress syndrome	80	*	150	47.6	1,100	31.1	1,240	34.8	1,260	32.7	1,340	34.5
Other conditions originating in the perinatal period	540	175.0	700	222.3	6,550	185.0	6,540	183.8	7,110	184.8	7,200	185.3
Sudden infant death syndrome	170	55.1	190	60.3	1,720	48.6	2,380	66.9	1,950	50.7	2,680	69.0
All other causes	430	139.4	460	146.1	5,660	159.9	5,180	145.6	6,140	159.6	5,810	149.6

* Figure does not meet standards of reliability or precision; see [Technical notes](#).

NOTES: Figures include all revisions received from the States. Cumulative and 12-month figures for the current year reflect revisions received for previous months, and figures for earlier years may differ from those previously published.

Technical notes

Nature and sources of data

Data in this report are provisional unless otherwise specified and include only events occurring within the United States (50 States and the District of Columbia). Mortality data exclude fetal deaths. Data for the Commonwealth of Puerto Rico are not included in the U.S. totals.

Birth, death, and infant death figures in [tables 2](#) and [4](#) for each State are estimates by State of residence. These estimates are derived by applying adjustment ratios to the actual counts of certificates for all events occurring in the State and received in registration offices during a 1-month period regardless of date of the event. The adjustment ratios for each data year represent the observed relationship between final State occurrence figures and final State residence figures for the three most recent years for which final data were available and are expressed as a single ratio for each State. As in previous years, monthly State marriage and divorce figures represent the actual count of all events occurring in the State (State of occurrence) that were received in the registration offices during the 1-month period. Delay in the receipt of certificates in a registration office may result in a low State figure for a given month followed by a high figure for the month(s) in which the delayed records are received. Data for previous months and cumulative data include revised figures received from the States.

Figures for births, deaths, and infant deaths for California in [tables 2](#) and [4](#) contain adjustments for varying lengths of State reporting periods. Figures for Texas for all events shown in [tables 2–4](#) also are adjusted for varying lengths of State reporting periods. The figures for both States are adjusted by the ratio between the number of days in the data month and the number of days in the State reporting period. The adjusted figures are included in the U.S. totals shown elsewhere in this report.

U.S. totals for births, deaths, and infant deaths are based on the State estimates by State of residence and, therefore, in effect, exclude events to nonresidents of the United States. Events to nonresidents of the United States are included in all

marriage and divorce figures. The effect of excluding events to nonresidents from the U.S. totals is small.

Provisional totals for the United States include estimates for State data shown as not available. Provisional totals for births and marriages for the entire United States include adjustments for observed differences between provisional and final monthly figures.

Divorce figures include reported annulments. The monthly national divorce estimate is obtained by multiplying the total for the reporting areas by the ratio observed between the most recent final annual divorce total for the United States and the provisional total for the reporting areas combined.

Random variation—Although the counts in this report are not subject to sampling variability (except the Current Mortality Sample), they may be affected by random variation. When the number of events is small and the probability of such an event is small, considerable caution must be observed in interpreting the data. Such infrequent events may be assumed to follow a Poisson probability distribution. For this distribution a simple approximation may be used to estimate the random variation as follows:

If N is the number of events in the population and R is the corresponding rate, the chances are 19 in 20 that

$$1. N - 2\sqrt{N} \text{ and } N + 2\sqrt{N}$$

covers the “true” number of events.

$$2. R - 2 \frac{R}{\sqrt{N}} \text{ and } R + 2 \frac{R}{\sqrt{N}}$$

covers the “true” rate.

If the rate R_1 corresponding to N_1 events is compared with the rate R_2 corresponding to N_2 events, the difference between the two rates may be regarded as statistically significant at the 0.05 level if it exceeds

$$2 \sqrt{\frac{R_1^2}{N_1} + \frac{R_2^2}{N_2}}$$

Additional information on random variation in numbers of events, rates, and ratios may be found in the technical appendixes of *Vital Statistics of the United States, 1992, Volumes I and II*.

Rates

Rates are on an annual basis and, except for infant mortality rates, are per 1,000 or 100,000 estimated population residing in the United States. The populations used for computing these rates are furnished by the U.S. Bureau of the Census. Rates shown in this report beginning with 1992 were computed using populations based on the 1990 Census enumeration comparable to those used for final data. Monthly rates are based on populations estimated for the specific month. Year-to-date rates are averages of monthly rates that have been weighted by the number of days in the corresponding months. Rates for 12-month periods are the sum of events for the period per population estimated at the midpoint of the period.

Infant mortality rates are deaths under 1 year of age for the specified period (monthly, year-to-date, or 12-month period) per 1,000 or 100,000 live births. Births used for computing monthly and year-to-date infant mortality rates are adjusted for monthly variation in the number of births. Births used to compute 12-month rates do not contain this adjustment. Births used for computing infant mortality rates are not corrected for observed differences between provisional and final monthly figures as described earlier in “[Nature and sources of data.](#)” Because monthly infant mortality rates are based on relatively few events, they are highly variable. Therefore, comparisons of monthly infant mortality rates should be interpreted cautiously; see “[Random variation.](#)”

Age-adjusted death rates are used to compare relative mortality risks across groups and over time. However, they should be viewed as constructs or indexes rather than as direct or actual measures of mortality risk. Statistically, they are weighted averages of the age-specific death rates, where the weights represent the fixed population proportions by age. See chapter 5 of an earlier report (4). The age-adjusted death rates presented in this report were computed by the direct method, that is, by applying age-specific death rates to the U.S. standard million population (5). See also chapter 10 of an earlier report (4). Age groups in [table 5](#) were used to compute the age-adjusted

rates shown in that table. It is important not to compare age-adjusted rates with crude rates.

Current Mortality Sample

The Current Mortality Sample (CMS) is a 10-percent systematic sample of death certificates drawn each month after the certificates are counted in the State registration offices. Deaths and death rates for the United States by age, race, sex, and cause are estimated based on the sample. Because of the additional time required to select and process the certificates, data based on the CMS are published 1 month after publication of the U.S. and State counts. Complete information concerning the underlying cause of death sometimes is not available when the sample is drawn. As a result estimates based on sample counts for certain causes are biased. Correction for bias is not made in this report.

Estimated numbers of deaths based on the sample were proportionately adjusted to be consistent with estimates based on the count of death certificates received in State registration offices.

HIV infection—Beginning with data for 1987, the National Center for Health Statistics introduced categories *042–*044 for classifying and coding Human immunodeficiency virus (HIV) infection. The asterisks before the categories indicate that these codes are not part of the *Ninth Revision, International Classification of Diseases*. Deaths classified to these categories are included in All other infectious and parasitic diseases in the List of 72 Selected Causes of Death and are also shown separately at the bottom of table 6.

Sampling variability—Because the estimates of deaths and death rates presented in this report with the exception of total deaths and deaths under 1 year are based on a sample of death certificates, they are subject to sampling variability. The estimated relative standard error in the following table is a measure of the sampling error of the estimated number of deaths (or of the estimated death rate) expressed as a percent of the estimate. The first column refers to monthly estimates; the second to annual; cumulative year-to-date totals fall between the two.

The chances are about 2 in 3 that the percent difference between an estimate and the result of a complete count is less than the percent shown. The chances are about 19 in 20 that the percent difference

is less than twice the percent shown. A figure based on 100 or fewer estimated deaths has a relative standard error of 30 percent or more and is, therefore, considered unreliable. A rate based on 100 or fewer estimated deaths has been replaced by an asterisk.

Unless otherwise specified comparisons made in the text between death rates based on the CMS were statistically significant at the 0.05 level of significance. Lack of comment in the text about any two rates does not mean that the difference was tested and found not to be significant at this level.

References

- Hollman FW, Kuzmeskus LB, Perkins RC, Weber EA. U.S. population estimates, by age, sex, race, and Hispanic Origin: 1990 to 1997. U.S. Bureau of the Census. PPL - 91. Washington: U.S. Department of Commerce. 1998.
- Clarke SC. Advance report of final marriage statistics, 1989 and 1990. Monthly vital statistics report; vol 43 no 12, suppl. Hyattsville, Maryland: National Center for Health Statistics. 1995.
- Clarke SC. Advance report of final divorce statistics, 1989 and 1990. Monthly vital statistics report; vol 43 no 9, suppl. Hyattsville, Maryland: National Center for Health Statistics. 1995.
- Feinleib M, Zarate AO, eds. Reconsidering age adjustment procedures: Workshop proceedings. National Center for Health Statistics. Vital Health Stat 4(29). 1992.
- Grove RD, Hetzel AM. Vital statistics rates in the United States, 1940–1960. Public Health Service. Washington: National Center for Health Statistics. 1968.

Relative standard errors for estimated numbers of deaths from the Current Mortality Sample expressed as a percent of the estimate

Estimated number of deaths	Relative standard error of estimate (as percent)	
	170,000 estimated deaths each month	2,000,000 estimated deaths each year
10	94.9	94.9
20	67.1	67.1
50	42.4	42.4
100	30.0	30.0
200	21.2	21.2
500	13.4	13.4
1,000	9.5	9.5
2,000	6.7	6.7
5,000	4.2	4.2
10,000	2.9	3.0
20,000	2.0	2.1
50,000	1.1	1.3
100,000	0.6	0.9
200,000	0.6
500,000	0.4
1,000,000	0.2

Suggested citation

National Center for Health Statistics. Births, marriages, divorces, and deaths for 1997. Monthly vital statistics report; vol 46 no 12. Hyattsville, Maryland: National Center for Health Statistics. 1998.

Copyright information

All material appearing in this report is in the public domain and may be reproduced or copied without permission; citation as to source, however, is appreciated.

National Center for Health Statistics

Director
Edward J. Sondik, Ph.D.

Deputy Director
Jack R. Anderson

Division of Vital Statistics

Director
Mary Anne Freedman

U.S. DEPARTMENT OF
HEALTH & HUMAN SERVICES

Centers for Disease Control and Prevention
National Center for Health Statistics
6525 Belcrest Road
Hyattsville, Maryland 20782-2003

FIRST CLASS MAIL
POSTAGE & FEES PAID
PHS/NCHS
PERMIT NO. G-281

OFFICIAL BUSINESS
PENALTY FOR PRIVATE USE, \$300

To receive this publication regularly, contact the National Center for Health Statistics by calling 301-436-8500

E-mail: nchsquery@cdc.gov
Internet: www.cdc.gov/nchswww/

DHHS Publication No. (PHS) 98-1120
8-0678 (7/98)