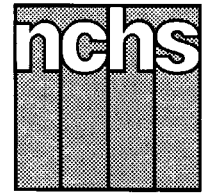


Monthly Vital Statistics Report



Provisional Data From the CENTERS FOR DISEASE CONTROL AND PREVENTION/National Center for Health Statistics

Births, Marriages, Divorces, and Deaths for August 1996

Births

According to provisional reports, an estimated 342,000 births occurred in the United States during August 1996. This was a 6-percent decrease from the provisional number of births reported for August 1995 (364,000). The birth rate, 15.2 live births per 1,000 population, was 7 percent lower than the rate for August 1995 (16.3). The fertility rate, 67.7 live births per 1,000 women 15–44 years, was 6 percent lower than the comparable rate for August 1995 (72.1). The seasonally adjusted fertility rate (63.9) was also 6 percent lower than the comparable rate for August 1995 (68.0).

During the first two-thirds of 1996, an estimated 2,611,000 births occurred, a 1-percent decrease from the 2,628,000 reported for the first two-thirds of 1995. The birth rate declined by 1 percent from 15.0 in 1995 to 14.8 in 1996. The fertility rate for the first two-thirds of 1996 was 65.7, 1 percent lower than the rate for the same period of 1995 (66.4).

An estimated 3,875,000 live births occurred in the 12-month period ending with August 1996, a decline of 1 percent from the 3,923,000 births reported for the same period a year earlier. The birth rate of 14.7 was 2 percent lower than the rate of 15.0 for the preceding 12 months. The fertility rate for the most recent 12-month

period was 65.1, 2 percent lower than the rate for the 12 months ending with August 1995 (66.1). These lower rates continue the generally downward trend observed since early 1991.

Natural increase

As a result of natural increase, the excess of births over deaths, an estimated 166,000 people, or 7.4 persons per 1,000 population, were added to the population during August 1996.

For the 12-month period ending with August 1996, 1,570,000 persons were added to the population. This represented a rate of natural increase of 6.0, 3 percent

Provisional Vital Statistics for the United States

[Rates for infant deaths are deaths under 1 year per 1,000 live births; fertility rates are live births per 1,000 women aged 15–44 years; all other rates are per 1,000 total population. Data are subject to monthly reporting variation; see [Technical notes](#)]

Item	August				January–August				12 months ending with August				
	Number		Rate		Number		Rate		Number		Rate		
	1996	1995	1996	1995	1996	1995	1996	1995	1996	1995	1996	1995	1994
Live births	342,000	364,000	15.2	16.3	2,611,000	2,628,000	14.8	15.0	3,875,000	3,923,000	14.7	15.0	15.5
Fertility rate	67.7	72.1	65.7	66.4	65.1	66.1	67.9
Deaths	176,000	184,000	7.8	8.2	1,553,000	1,557,000	8.8	8.9	2,305,000	2,296,000	8.7	8.8	8.8
Infant deaths	2,200	2,400	6.6	7.2	18,700	19,800	7.2	7.6	28,200	30,000	7.3	7.7	8.0
Natural increase	166,000	180,000	7.4	8.1	1,058,000	1,071,000	6.0	6.1	1,570,000	1,627,000	6.0	6.2	6.7
Marriages	237,000	254,000	10.5	11.4	1,519,000	1,549,000	8.7	9.0	2,305,000	2,349,000	8.7	9.0	9.0
Divorces	100,000	99,000	4.5	4.4	777,000	785,000	4.4	4.5	1,161,000	1,184,000	4.4	4.5	4.6
Population base (in millions)	265.4	263	264.3	262.0	259.8

... Category not applicable.

NOTES: Figures include revisions received from the States. Twelve-month figures for the current year reflect revisions received for previous months, and figures for earlier years may differ from those previously published.



U.S. DEPARTMENT OF HEALTH AND HUMAN SERVICES
Centers for Disease Control and Prevention
National Center for Health Statistics



lower than the rate of 6.2 for the preceding 12-month period. The decline in the rate of natural increase was due to a decrease in the birth rate and only a slight decrease in the death rate.

Marriages

Approximately 237,000 couples married in August 1996, 7 percent fewer than in August 1995 (254,000). The marriage rate per 1,000 population for August 1996 (10.5) was 8 percent lower than in 1995 (11.4).

The number of marriages performed in the the first 8 months of 1996 (1,519,000) was 2 percent lower than the number performed in the same period a year earlier (1,549,000). The marriage rate for the 8-month period was 3 percent lower in 1996 (8.7) than in 1995 (9.0).

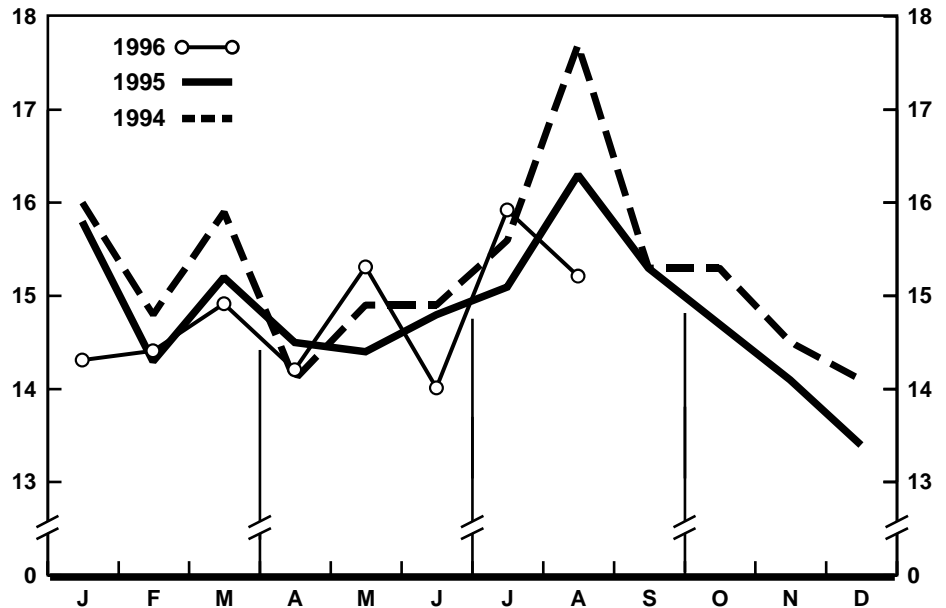
The number of marriages performed during the 12 months ending with August 1996 (2,305,000) was 2 percent lower than the number performed during the comparable period a year earlier (2,349,000). The marriage rate dropped from 9.0 for the period ending with August 1995 to 8.7 for the period ending with August 1996—a 3-percent decline.

Divorces

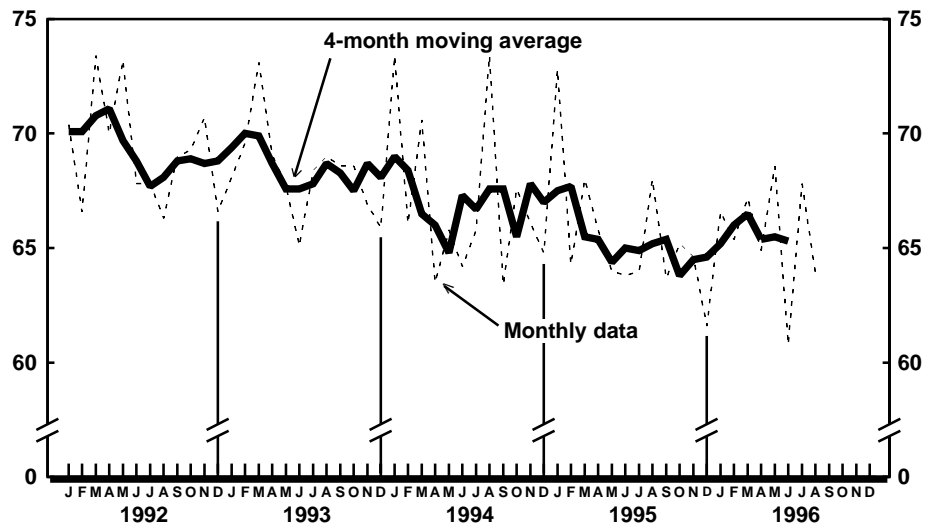
An estimated 100,000 divorces were granted in August 1996, 1 percent more than in August a year earlier (99,000). The divorce rate per 1,000 population for August increased 2 percent, from 4.4 in 1995 to 4.5 in 1996.

Despite the increase for August, the number and rate of divorces for the first 8 months of 1996 were lower than the number and rate for the same period in 1995. The number of divorces for the 8-month period was 1 percent lower in 1996 (777,000) than in 1995 (785,000), while the rate declined 2 percent—4.5 in 1995 to 4.4 in 1996.

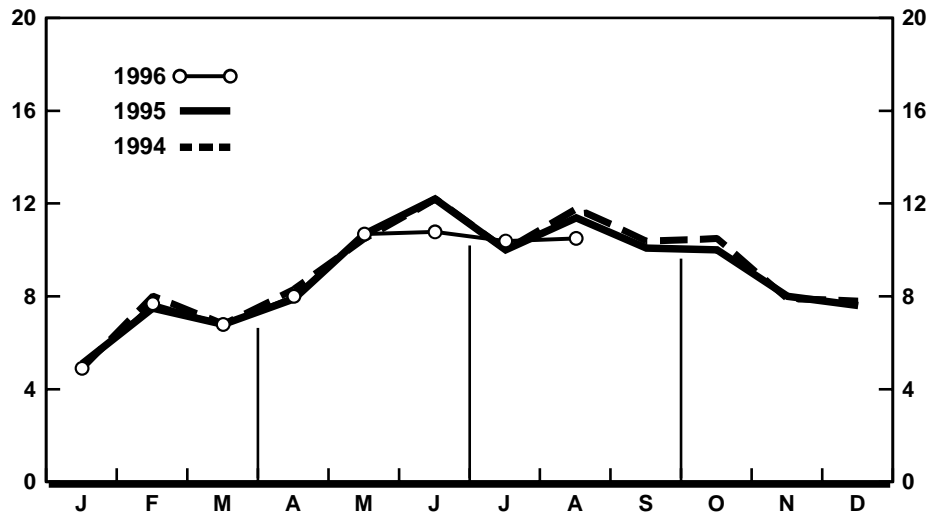
Approximately 1,161,000 couples divorced during the 12-month period ending with August 1996, a 2-percent decline from the number divorced during the same period a year earlier (1,184,000). The divorce rate for the current 12-month period (4.4) was also 2 percent lower than the rate for the period ending with August 1995 (4.5).



Provisional birth rates per 1,000 population by month: United States, 1994-96



Provisional seasonally adjusted fertility rates per 1,000 women aged 15-44 years: United States, 1992-96



Provisional marriage rates per 1,000 population by month: United States, 1994-96

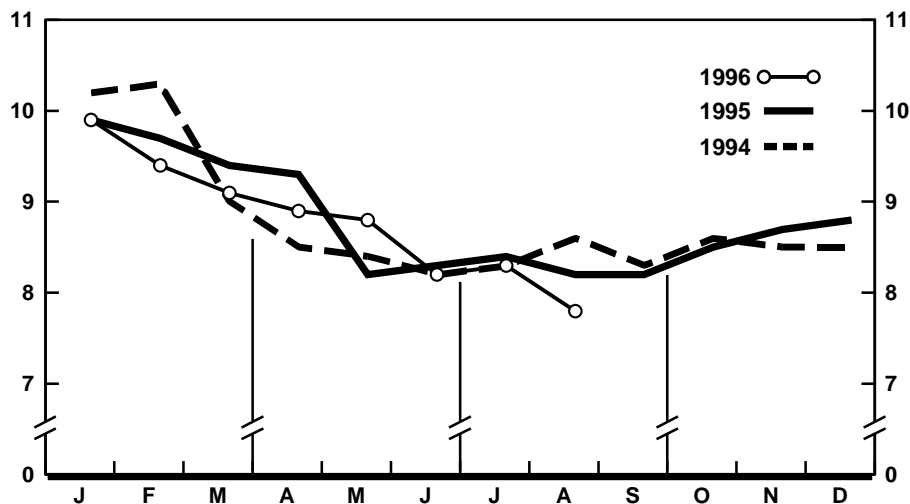
Deaths

For August 1996 there were an estimated 176,000 deaths in the United States. The death rate was 7.8 deaths per 1,000 population, 5 percent lower than the rate of 8.2 for August a year earlier. Among the 176,000 deaths for August 1996 were 2,200 deaths at ages under 1 year.

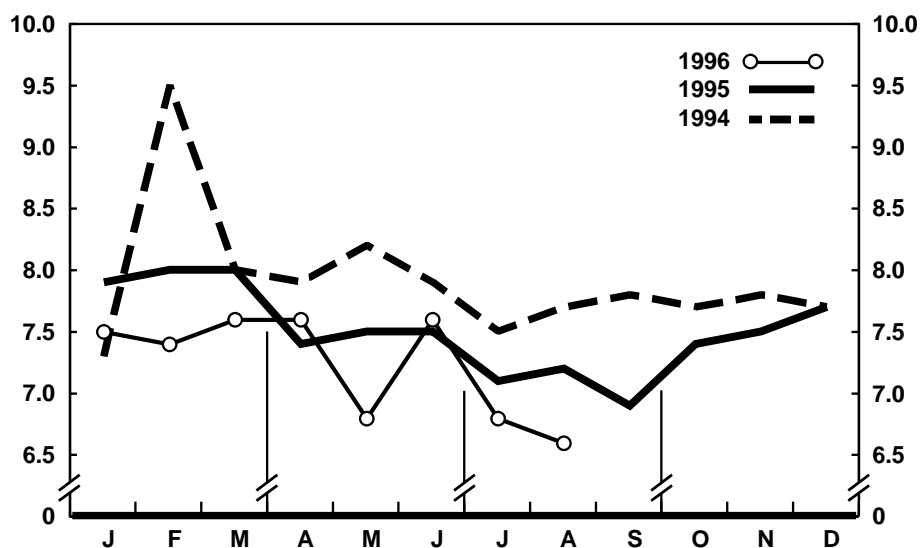
According to provisional statistics, there were 1,553,000 deaths during the first 8 months of 1996, a decrease of less than 1 percent from the number estimated for January–August 1995 (1,557,000). The death rate, 8.8 per 1,000 population, was 1 percent lower than the rate for January–August 1995 (8.9). Among the 1,553,000 deaths for January–August 1996 were 18,700 deaths at ages under 1 year, yielding an infant mortality rate of 7.2 per 1,000 live births. This rate was 5 percent lower than the rate of 7.6 for the first 8 months of 1995.

The death rate for the 12 months ending with August 1996 was 8.7 deaths per 1,000 population, 1 percent lower than the rate of 8.8 for the comparable 12-month period a year earlier. The infant mortality rate for this 12-month period was 7.3 per 1,000 live births, 5 percent lower than the rate of 7.7 for the 12 months ending with August 1995.

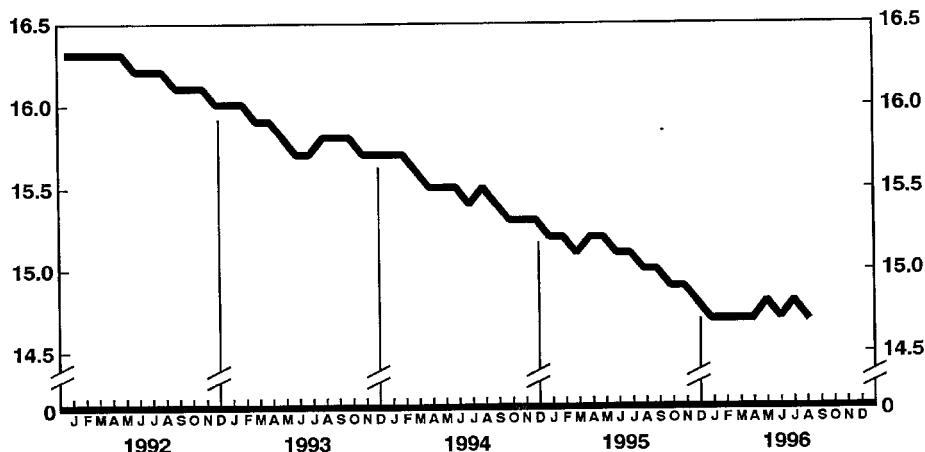
Current Mortality Sample, 12 months ending with July 1996—The provisional death rate for the 12 months ending with July 1996 was 875.4 per 100,000 population, a decrease of less than 1 percent from the rate of 879.4 for the 12-month period ending July 1995. The provisional age-adjusted death rate for the 12-month period ending with July 1996 was 497.4 per 100,000 U.S. standard million population, 2 percent lower than the rate of 506.7 for the 12-month period ending with July 1995. The age-adjusted death rates control for changes and variations in the age composition of the population; therefore, they are better indicators than crude rates for showing changes in mortality risk over time and for showing differences between race-sex groups within the population. Among the four race-sex groups, the estimated age-adjusted death rate decreased for white males and black females. By age the death rate for the total population decreased for the age groups



Provisional death rates per 1,000 population by month: United States, 1994–96



Provisional infant mortality rates per 1,000 live births by month: United States, 1994–96



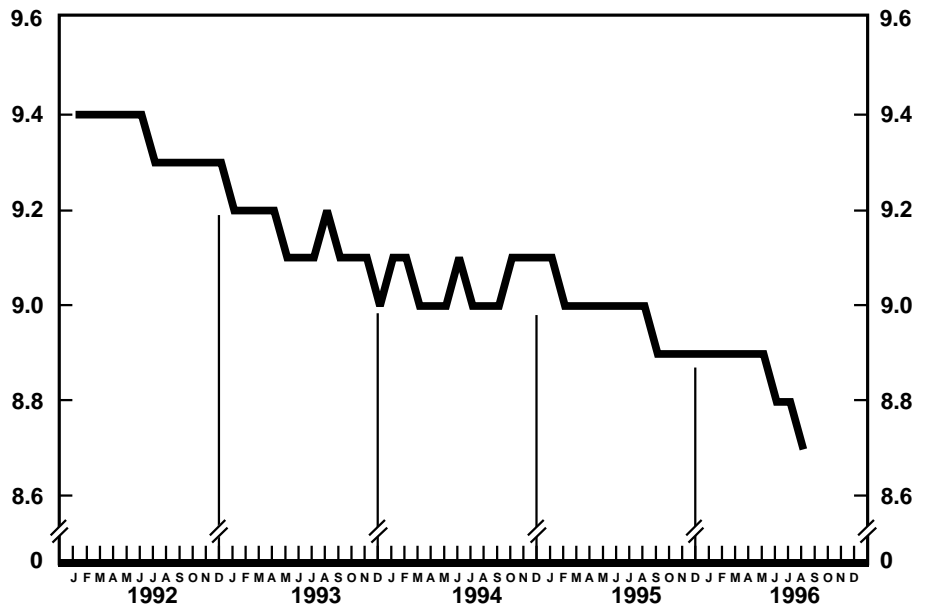
Provisional birth rates per 1,000 population for successive 12-month periods ending with month indicated: United States, 1992–96

under 1 year, 1–4 years, 25–34 years, 35–44 years, 45–54 years, 65–74 years, and 75–84 years of age.

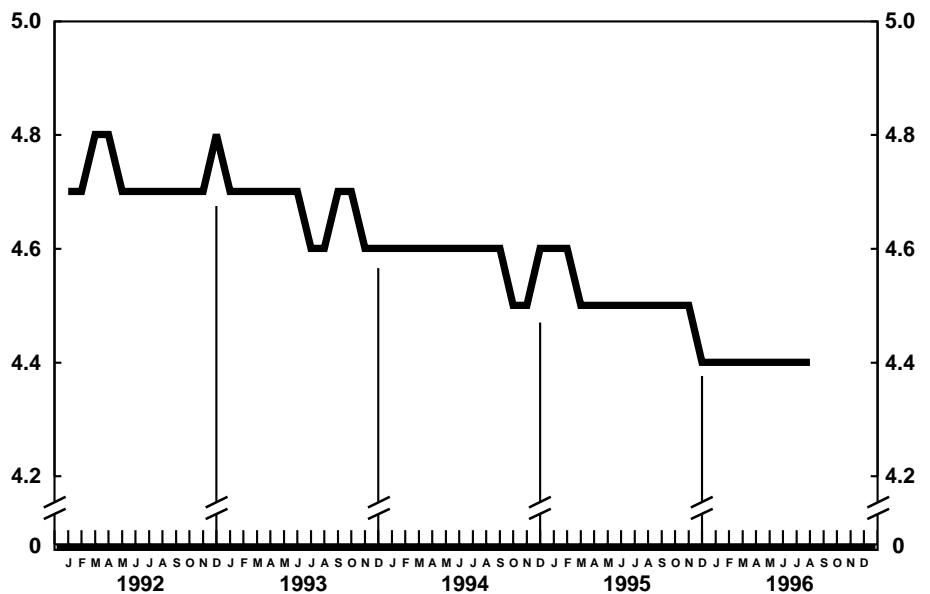
Among the major causes of death, the estimated death rate continued to decrease between the two successive 12-month periods for Human immunodeficiency virus infection, Malignant neoplasms of genital organs, Suicide, Chronic liver disease and cirrhosis, and Homicide and legal intervention. The death rate increased between the two successive 12-month periods for Accidents and adverse effects and Alzheimer’s disease. The increase for Alzheimer’s disease may reflect changes in diagnostic practices rather than real increases in mortality from this cause.

The death rate for injury by firearms for the 12 months ending with July 1996 was 13.3 per 100,000 population, 5 percent lower than the rate of 14.0 for the comparable 12-month period a year earlier.

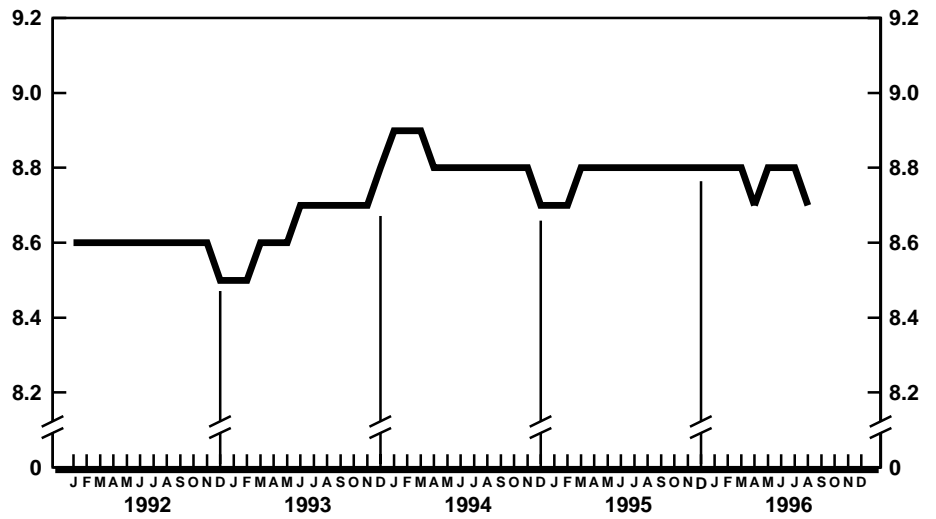
The infant mortality rate for the 12 months ending with July 1996 was 733.6 per 100,000 live births, 5 percent lower than the rate of 770.0 for the same 12-month period a year earlier. For infants under 28 days of age, the 12-month rate ending July 1996 was 479.6 compared with a rate of 491.3 for the 12-month period a year earlier. The change in the mortality rate for infants under 28 days of age was not statistically significant. The infant mortality rate for infants aged 28 days–11 months was 254.0, 8 percent lower than the rate of 277.4 for the 12-month period a year earlier. Among causes of infant death, the infant mortality rate decreased between the two successive 12-month periods for Sudden infant death syndrome.



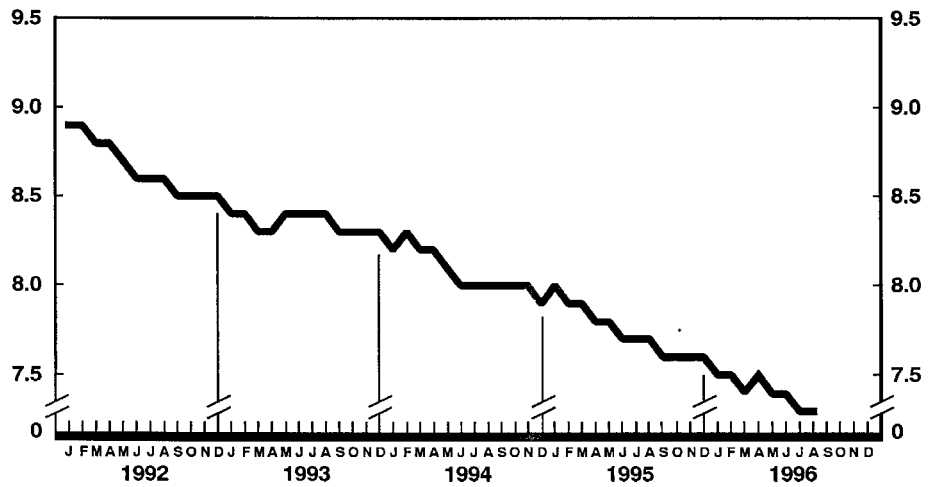
Provisional marriage rates per 1,000 population for successive 12-month periods ending with month indicated: United States, 1992–96



Provisional divorce rates per 1,000 population for successive 12-month periods ending with month indicated: United States, 1992–96



Provisional death rates per 1,000 population for successive 12-month periods ending with month indicated: United States, 1992-96



Provisional infant mortality rates per 1,000 live births for successive 12-month periods ending with month indicated: United States, 1992-96

Table 1. Provisional number of live births, marriages, divorces, deaths, and infant deaths and rates, by month: United States, January 1995–August 1996[Data are provisional and are subject to monthly reporting variation; see [Technical notes](#)]

Period	Live births				Marriages		Divorces		Deaths		Infant deaths	
	Number	Rate per 1,000 women aged 15–44 years		Number	Rate per 1,000 population	Number	Rate per 1,000 population	Number	Rate per 1,000 population	Number	Rate per 1,000 live births	
		Rate per 1,000 population	Seasonally adjusted ¹									
1995:												
January	350,000	15.8	69.4	72.8	111,000	5.1	96,000	4.3	220,000	9.9	2,700	7.9
February	287,000	14.3	63.1	64.3	146,000	7.5	89,000	4.4	194,000	9.7	2,400	8.0
March	338,000	15.2	67.1	68.0	148,000	6.8	98,000	4.4	208,000	9.4	2,700	8.0
April	313,000	14.5	64.1	65.8	165,000	7.9	98,000	4.6	200,000	9.3	2,300	7.4
May	321,000	14.4	63.5	64.0	238,000	10.7	103,000	4.6	184,000	8.2	2,500	7.5
June	318,000	14.8	65.2	63.8	263,000	12.2	104,000	4.8	180,000	8.3	2,400	7.5
July	337,000	15.1	66.6	64.0	224,000	10.0	97,000	4.4	188,000	8.4	2,400	7.1
August	364,000	16.3	72.1	68.0	254,000	11.4	99,000	4.4	184,000	8.2	2,400	7.2
September	331,000	15.3	67.6	63.7	219,000	10.1	99,000	4.6	178,000	8.2	2,200	6.9
October	328,000	14.7	64.9	65.2	224,000	10.0	98,000	4.4	190,000	8.5	2,500	7.4
November	306,000	14.1	62.6	64.6	174,000	8.0	95,000	4.4	188,000	8.7	2,300	7.5
December	300,000	13.4	59.3	61.6	169,000	7.6	92,000	4.1	197,000	8.8	2,400	7.7
1996:												
January	320,000	14.3	63.5	66.6	106,000	4.9	96,000	4.3	221,000	9.9	2,400	7.5
February	302,000	14.4	64.1	65.4	155,000	7.7	85,000	4.1	197,000	9.4	2,300	7.4
March	334,000	14.9	66.3	67.2	147,000	6.8	93,000	4.2	204,000	9.1	2,500	7.6
April	309,000	14.2	63.3	64.9	168,000	8.0	95,000	4.4	193,000	8.9	2,400	7.6
May	344,000	15.3	68.1	68.6	239,000	10.7	103,000	4.6	197,000	8.8	2,300	6.8
June	303,000	14.0	62.1	60.8	235,000	10.8	104,000	4.8	179,000	8.2	2,300	7.6
July	357,000	15.9	70.7	67.8	233,000	10.4	100,000	4.5	186,000	8.3	2,300	6.8
August	342,000	15.2	67.7	63.9	237,000	10.5	100,000	4.5	176,000	7.8	2,200	6.6

¹The method of seasonal adjustment, developed by the U.S. Bureau of the Census, is described in *The X-11 Variant of the Census Method II Seasonal Adjustment Program*, Technical Paper No. 15 (1967 revision)

NOTE: Figures include all revisions received from the States and, therefore, may differ from those previously published.

Table 2. Provisional number of live births and deaths: Each division and State, August 1995 and 1996, and cumulative figures, 1994–96

[Data are estimates by State of residence; see [Technical notes](#)]

Area	Live births					Deaths				
	August		January–August			August		January–August		
	1996	1995	1996	1995	1994	1996	1995	1996	1995	1994
New England	16,833	16,772	129,704	121,123	119,518	9,361	9,876	76,869	80,358	77,440
Maine	1,201	1,085	9,271	9,182	9,586	1,012	1,004	7,574	7,730	8,021
New Hampshire	1,228	1,588	9,412	10,041	9,818	740	770	6,007	6,245	5,978
Vermont	538	766	4,533	4,692	4,479	366	431	3,373	3,522	3,055
Massachusetts	7,871	8,823	71,790	57,184	57,904	3,594	4,690	35,143	37,462	35,474
Rhode Island	1,223	1,133	8,363	8,335	8,893	733	741	6,173	6,400	6,176
Connecticut	4,772	3,377	26,335	31,689	28,838	2,916	2,240	18,599	18,999	18,736
Middle Atlantic	44,279	50,024	350,630	352,877	367,881	26,957	28,317	243,468	251,002	247,799
New York	22,878	23,956	180,507	176,297	186,142	11,657	13,405	110,182	115,106	112,884
New Jersey	9,362	13,035	70,079	73,990	75,371	5,721	5,732	48,177	50,604	48,536
Pennsylvania	12,039	13,033	100,044	102,590	106,368	9,579	9,180	85,109	85,292	86,379
East North Central	52,207	54,957	407,548	411,667	432,162	28,653	32,202	257,200	263,243	266,207
Ohio	13,623	12,608	98,095	98,966	108,738	7,051	8,446	69,408	70,048	72,039
Indiana	5,081	7,998	47,466	52,325	54,712	3,825	3,915	31,897	34,240	35,839
Illinois	16,198	16,158	122,488	124,150	126,281	7,850	9,363	69,669	72,898	71,912
Michigan	11,354	12,003	94,188	90,840	95,163	6,530	6,935	56,025	55,991	56,162
Wisconsin	5,951	6,190	45,311	45,386	47,268	3,397	3,543	30,201	30,066	30,255
West North Central	23,878	23,152	168,461	171,421	169,354	12,582	12,915	115,519	113,737	114,228
Minnesota	5,847	5,422	42,614	42,209	43,804	2,717	2,775	24,302	24,484	24,315
Iowa	3,267	3,923	22,864	23,272	23,680	2,144	2,035	20,929	17,527	17,421
Missouri	5,664	6,484	48,821	50,150	50,143	3,695	3,897	35,923	37,025	38,178
North Dakota	753	826	5,569	5,924	5,779	485	503	3,864	4,057	3,955
South Dakota	883	1,096	6,575	7,441	7,218	470	607	4,177	4,675	4,612
Nebraska	2,146	2,170	15,674	15,657	15,421	1,201	1,079	10,113	10,000	9,755
Kansas	5,318	3,231	26,344	26,768	23,309	1,870	2,019	16,211	15,969	15,992
South Atlantic	58,941	56,601	432,031	438,208	438,069	34,468	35,327	299,070	295,923	290,681
Delaware	840	772	6,781	6,779	7,021	517	520	4,295	4,162	4,175
Maryland	7,036	7,363	47,411	49,792	46,404	3,353	3,507	28,104	27,613	26,118
District of Columbia	723	777	5,463	6,067	6,673	499	547	4,057	4,390	4,571
Virginia	8,623	6,345	58,106	60,654	62,622	4,053	3,973	34,836	35,412	36,405
West Virginia	2,130	1,801	13,339	14,617	15,198	1,506	1,656	12,778	13,534	13,840
North Carolina	9,635	8,299	69,259	68,857	69,194	5,053	4,929	44,834	43,445	43,804
South Carolina	5,016	5,020	33,998	33,588	34,301	2,980	2,837	23,084	21,837	21,091
Georgia	8,467	9,838	75,183	74,992	71,330	4,588	4,952	40,613	39,779	39,095
Florida	16,471	16,386	122,862	122,862	125,326	11,919	12,406	106,469	105,751	101,582
East South Central	19,653	19,610	149,131	147,412	152,382	12,858	12,580	106,780	106,957	106,146
Kentucky	4,576	4,225	34,974	33,316	34,408	2,823	2,953	25,426	26,357	25,675
Tennessee	6,946	6,906	47,387	47,956	49,864	4,531	4,229	33,994	34,052	33,314
Alabama	5,119	5,220	40,719	40,950	40,751	3,429	3,166	29,239	28,438	29,036
Mississippi	3,012	3,259	26,051	25,190	27,359	2,075	2,232	18,121	18,110	18,121
West South Central	47,286	38,712	324,314	320,236	316,600	18,374	17,728	166,091	159,304	164,445
Arkansas	3,763	2,973	24,013	22,420	23,051	1,997	1,981	17,248	16,937	18,366
Louisiana	6,264	5,621	44,172	44,433	45,183	2,966	2,885	27,994	26,552	28,366
Oklahoma	4,668	4,605	29,951	31,285	31,372	2,548	2,618	22,434	21,999	21,926
Texas ¹	32,591	25,513	226,178	222,098	216,994	10,863	10,244	98,415	93,816	95,787
Mountain	22,759	19,647	172,563	163,732	166,366	9,104	9,476	83,123	78,369	76,310
Montana	1,021	941	7,364	7,432	7,363	650	581	5,158	5,046	4,932
Idaho	1,689	1,479	12,818	11,675	11,851	718	720	5,761	5,664	5,655
Wyoming	453	476	4,131	4,287	4,337	286	298	2,343	2,481	2,312
Colorado	4,037	4,347	32,477	34,419	36,787	1,900	1,947	17,006	16,809	16,225
New Mexico	2,305	2,209	18,100	17,838	18,706	876	1,042	8,611	8,506	8,225
Arizona	7,451	4,772	55,531	48,623	45,475	3,036	3,144	28,066	24,470	24,101
Utah	3,545	3,340	27,065	26,073	25,922	794	963	7,416	7,249	7,025
Nevada	2,258	2,083	15,077	13,385	15,925	844	781	8,762	8,144	7,835
Pacific	54,963	70,682	455,674	481,433	498,576	23,478	25,070	204,579	205,119	203,422
Washington	7,955	8,073	53,724	52,298	52,272	2,449	3,745	26,405	26,643	25,923
Oregon	3,883	3,938	30,550	30,038	28,952	2,230	1,982	18,631	18,844	18,889
California ¹	40,559	56,336	352,424	380,046	395,516	17,918	18,493	152,549	152,995	152,103
Alaska	988	906	6,685	7,055	8,994	196	279	1,617	1,587	1,610
Hawaii	1,578	1,429	12,291	11,996	12,842	685	571	5,377	5,050	4,897
Puerto Rico ²	5,445	5,256	38,916	39,502	---	2,727	2,314	18,063	19,466	---

--- Data not available.

¹Figures include adjustments for varying lengths of reporting periods; see [Technical notes](#).

²Data for Puerto Rico are not included in U.S. total figures.

NOTES: Figures include all revisions received from the States. Cumulative figures for the current year reflect revisions received for previous months, and figures for earlier years may differ from those previously published.

Table 3. Provisional number of marriages and divorces: Each division and State, August 1995 and 1996, and cumulative figures, 1994–96

[By State of occurrence. Number of events reported; see [Technical notes](#). Divorces include reported annulments]

Area	Marriages					Divorces				
	August		January–August			August		January–August		
	1996	1995	1996	1995	1994	1996	1995	1996	1995	1994
New England	19,079	10,465	150,231	58,983	63,997	3,994	3,518	24,818	26,647	25,453
Maine	---	1,686	---	6,899	6,779	629	427	3,119	3,326	3,454
New Hampshire	1,089	1,323	5,590	5,542	6,177	313	407	3,095	3,277	3,310
Vermont	678	846	3,358	3,466	3,111	222	164	1,815	1,909	1,695
Massachusetts	4,778	3,650	24,272	25,692	30,216	1,590	1,314	7,669	9,143	8,583
Rhode Island	905	836	4,860	4,395	4,331	361	336	2,171	2,511	2,156
Connecticut	1,629	2,124	12,151	12,989	13,383	879	870	6,949	6,481	6,255
Middle Atlantic	27,688	24,869	160,276	167,238	168,852	11,009	11,832	82,633	79,518	78,448
New York ²	16,193	13,244	86,019	89,094	90,264	5,703	6,638	40,382	36,497	35,920
New Jersey	4,774	4,542	30,648	31,592	32,053	1,749	1,922	17,003	16,679	16,274
Pennsylvania	6,721	7,083	43,609	46,552	46,535	3,557	3,272	25,248	26,342	26,254
East North Central	31,650	34,708	191,072	211,307	215,963	¹ 12,436	¹ 11,856	¹ 93,231	¹ 97,133	¹ 98,911
Ohio	9,065	9,585	51,984	57,548	55,731	4,043	4,457	29,153	33,443	33,030
Indiana	2,732	5,004	18,028	33,039	32,536	---	---	---	---	---
Illinois	8,625	6,137	56,186	50,912	58,865	3,415	2,380	26,828	25,166	28,297
Michigan	6,907	9,462	41,737	46,146	45,421	3,656	3,741	25,887	26,877	26,293
Wisconsin	4,321	4,520	23,137	23,662	23,410	1,322	1,278	11,363	11,647	11,291
West North Central	16,636	17,039	96,411	96,104	96,167	5,172	6,119	50,418	50,133	50,789
Minnesota	4,467	4,504	21,570	21,521	21,171	1,294	1,284	10,092	10,226	10,530
Iowa	2,584	2,300	14,290	14,181	14,234	822	841	7,950	7,058	7,472
Missouri	3,948	4,556	30,828	30,444	29,677	2,255	2,040	17,867	18,153	18,248
North Dakota	676	657	3,340	3,199	3,358	182	207	1,550	1,471	1,464
South Dakota	1,031	1,123	4,803	5,124	5,265	220	233	1,820	1,866	1,955
Nebraska	1,332	1,289	8,708	8,502	8,749	399	469	4,019	4,206	4,321
Kansas	2,598	2,610	12,872	13,133	13,713	---	1,045	7,120	7,153	6,799
South Atlantic	39,003	41,580	293,251	297,288	292,398	¹ 19,789	19,129	¹ 147,087	152,008	155,451
Delaware	537	481	3,352	3,337	3,168	344	331	2,312	2,559	2,310
Maryland	3,980	4,029	26,147	26,659	26,648	1,621	1,132	10,603	9,982	11,492
District of Columbia	447	215	1,487	1,280	1,371	---	98	---	950	1,547
Virginia	7,477	7,281	42,827	45,428	45,693	2,364	2,466	18,522	18,559	19,461
West Virginia	796	1,022	6,946	7,156	6,970	370	444	4,637	5,886	5,989
North Carolina	4,903	5,664	39,950	41,334	32,264	3,275	3,003	23,964	25,358	24,218
South Carolina	3,682	4,021	29,517	30,681	34,537	1,167	1,509	9,975	9,745	10,229
Georgia	4,960	6,446	40,447	41,936	41,743	4,632	2,888	24,371	24,470	24,798
Florida	12,221	12,421	102,578	99,477	100,004	6,016	7,258	52,703	54,499	55,407
East South Central	18,909	19,942	127,232	131,781	127,012	6,843	7,757	67,506	64,621	65,761
Kentucky	4,514	4,132	29,037	31,503	31,897	1,587	2,318	14,372	15,577	15,039
Tennessee	8,076	10,149	51,758	59,298	52,357	2,594	2,902	23,374	22,960	22,435
Alabama	4,505	3,803	31,779	26,853	27,335	2,152	1,866	17,616	17,551	17,884
Mississippi	1,814	1,858	14,658	14,127	15,423	510	671	12,144	8,533	10,403
West South Central	25,962	26,810	199,054	208,794	207,798	¹ 11,717	¹ 10,772	¹ 91,963	¹ 92,429	¹ 95,837
Arkansas	4,239	3,479	23,999	23,734	25,854	2,121	1,503	10,200	10,258	11,946
Louisiana	2,561	3,923	23,735	27,615	27,826	---	---	---	---	---
Oklahoma	2,532	2,698	18,768	19,714	20,315	1,806	2,048	13,443	14,694	14,520
Texas ³	16,630	16,710	132,552	137,731	133,803	7,790	7,221	68,320	67,477	69,371
Mountain	26,687	25,768	178,666	185,264	183,169	¹ 4,961	¹ 6,714	¹ 39,917	¹ 49,768	¹ 46,322
Montana	1,081	1,018	4,773	4,752	4,921	298	417	2,827	2,774	2,760
Idaho	1,983	1,641	9,922	10,054	10,075	513	519	4,669	4,405	4,807
Wyoming	754	615	3,414	3,447	3,291	281	254	2,114	2,153	1,959
Colorado	4,409	3,953	23,626	23,548	23,897	---	---	---	---	---
New Mexico ^{4,5}	1,434	1,525	11,189	10,290	8,659	893	936	7,473	7,670	6,653
Arizona ²	3,146	2,855	27,147	26,438	24,673	2,363	2,595	17,125	18,161	15,403
Utah	2,236	2,439	14,653	14,665	13,513	613	688	5,709	5,915	6,249
Nevada	11,644	11,722	83,942	92,070	94,140	---	1,305	---	8,690	8,491
Pacific	28,516	40,377	202,940	186,754	199,735	¹ 4,562	¹ 4,038	¹ 33,392	¹ 35,252	¹ 36,673
Washington	2,901	6,332	26,409	29,566	28,788	2,486	2,144	18,689	19,573	20,228
Oregon	3,653	3,330	15,934	18,118	16,761	1,363	1,217	9,565	10,067	11,094
California	19,376	28,454	143,616	123,000	138,281	---	---	---	---	---
Alaska	809	753	3,799	3,795	3,840	353	289	1,947	2,092	2,222
Hawaii	1,777	1,508	13,182	12,275	12,065	360	388	3,191	3,520	3,129
Puerto Rico ⁶	2,783	3,089	19,868	21,372	---	---	---	---	---	---

--- Data not available.

— Quantity zero.

¹Excludes figures for State(s) shown below as not available.

²Figures for marriages are marriage licenses issued for some counties.

³Figures include adjustments for varying lengths of reporting periods; see [Technical notes](#).

⁴Figures for marriages are marriage licenses issued.

⁵Figures for divorces include estimates for some counties.

⁶Data for Puerto Rico are not included in U.S. total figures.

NOTES: Figures include all revisions received from the States. Cumulative figures for the current year reflect revisions received for previous months, and figures for earlier years may differ from those previously published.

Table 4. Provisional number of deaths under 1 year and infant mortality rates: Each division and State, 12 months ending with August 1995 and 1996

[Data are estimates by State of residence. Figures should be interpreted with caution because of conversion to place of residence; see [Technical notes](#). Infant mortality rates are deaths under 1 year per 1,000 live births in specified area]

Area	12 months ending with August			
	1996		1995	
	Number	Rate	Number	Rate
New England	897	5.1	1,006	5.7
Maine	65	4.6	83	6.0
New Hampshire	75	5.2	78	5.3
Vermont	56	8.5	42	5.7
Massachusetts	397	4.5	469	5.7
Rhode Island	74	5.8	83	6.4
Connecticut	230	5.8	251	5.6
Middle Atlantic	3,862	7.3	4,070	7.6
New York	1,922	7.2	2,104	7.8
New Jersey	806	7.2	805	6.9
Pennsylvania	1,134	7.6	1,161	7.6
East North Central	5,001	8.1	5,454	8.8
Ohio	1,219	7.9	1,318	8.7
Indiana	650	8.2	774	9.6
Illinois	1,531	8.3	1,705	9.1
Michigan	1,092	8.0	1,162	8.6
Wisconsin	509	7.6	495	7.4
West North Central	1,781	7.1	1,886	7.4
Minnesota	397	6.3	412	6.5
Iowa	212	5.9	260	7.3
Missouri	560	7.6	593	7.9
North Dakota	33	3.9	50	5.7
South Dakota	62	6.4	122	11.3
Nebraska	190	8.2	181	7.8
Kansas	327	8.9	268	7.3
South Atlantic	5,472	8.4	5,695	8.6
Delaware	67	6.7	67	6.6
Maryland	577	8.3	663	8.8
District of Columbia	128	15.3	169	18.6
Virginia	689	7.9	693	7.4
West Virginia	158	8.0	160	7.6
North Carolina	939	9.2	1,008	9.9
South Carolina	417	8.3	424	8.4
Georgia	1,073	9.5	1,030	9.1
Florida	1,424	7.6	1,481	7.9
East South Central	2,095	9.3	2,156	9.5
Kentucky	414	7.9	387	7.6
Tennessee	651	8.9	721	9.8
Alabama	633	10.4	621	10.2
Mississippi	397	10.4	427	10.4
West South Central	3,432	7.1	3,488	7.3
Arkansas	312	8.7	256	7.5
Louisiana	558	8.3	625	9.2
Oklahoma	408	9.2	397	8.7
Texas ¹	2,154	6.4	2,210	6.8
Mountain	1,690	6.8	1,703	7.1
Montana	83	7.4	85	7.7
Idaho	122	6.5	114	6.6
Wyoming	46	7.5	54	8.5
Colorado	341	7.1	363	7.0
New Mexico	158	5.8	214	7.9
Arizona	570	7.6	531	7.7
Utah	226	5.7	222	5.7
Nevada	144	6.3	120	6.3
Pacific	3,987	5.8	4,484	6.2
Washington	232	2.9	404	5.1
Oregon	235	5.4	264	6.1
California ¹	3,348	6.2	3,631	6.4
Alaska	69	7.1	70	6.9
Hawaii	103	5.5	115	6.3
Puerto Rico ²	628	10.4	---	---

--- Data not available.

¹Figures include adjustments for varying lengths of reporting periods; see [Technical notes](#).

²Data for Puerto Rico are not included in U.S. total figures.

NOTES: Figures include all revisions received from the States. Figures for the current year reflect revisions received for previous months, and figures for earlier years may differ from those previously published.

Table 5. Provisional number of deaths and death rates, by age, race, and sex, and age-adjusted death rates by race and sex: United States, July 1995 and 1996, cumulative figures 1995 and 1996, and 12 months ending with July 1995 and 1996

[Data are provisional, estimated from a 10-percent sample of deaths. Age-specific rates on an annual basis per 100,000 population in specified group; age-adjusted rates per 100,000 U.S. standard million population; see [Technical notes](#). Because of rounding of estimates, figures may not add to totals. For method of computation and information on standard errors of the estimates, see [Technical notes](#)]

Age, race, and sex	July				January–July				12 months ending with July			
	1996		1995		1996		1995		1996		1995	
	Number	Rate	Number	Rate	Number	Rate	Number	Rate	Number	Rate	Number	Rate
All races, both sexes ¹												
All ages	186,000	827.1	188,000	841.9	1,377,000	894.3	1,373,000	901.8	2,313,000	875.4	2,302,000	879.4
Under 1 year					16,400	² 734.3	17,400	² 777.2	28,400	² 737.4	30,300	² 790.1
1–4 years	} 3,760	76.4	3,620	73.8	3,780	41.6	4,350	47.3	6,170	39.5	7,200	45.5
5–14 years					5,170	23.1	4,590	20.7	8,810	23.0	8,240	21.7
15–24 years					3,240	106.4	3,060	100.2	19,520	93.3	19,380	92.9
25–34 years	4,320	126.3	4,810	138.6	31,230	132.5	33,770	141.9	55,730	137.4	58,750	143.1
35–44 years	7,860	214.5	8,530	236.3	57,270	228.3	59,240	241.0	100,670	234.2	101,640	241.0
45–54 years	12,020	439.0	12,470	472.3	83,100	445.4	84,260	471.0	141,990	445.2	140,860	460.1
55–64 years	18,830	1,041.5	19,190	1,069.1	139,090	1,123.5	138,240	1,128.2	235,290	1,107.8	236,550	1,122.6
65–74 years	39,230	2,478.8	39,270	2,465.2	284,730	2,614.7	288,670	2,650.7	475,010	2,536.1	483,490	2,578.9
75–84 years	52,450	5,418.2	53,040	5,601.9	394,810	5,977.7	389,400	6,050.0	656,980	5,810.4	650,480	5,888.3
85 years and over	44,000	13,908.5	43,780	14,200.4	341,140	15,820.1	333,180	15,930.8	566,220	15,340.6	548,680	15,296.3
Not stated	60	...	60	...	580	...	630	...	970	...	950	...
Age-adjusted rate ³	475.6	...	488.2	...	504.7	...	515.2	...	497.4	...	506.7
All races, male ¹												
All ages	93,930	856.1	96,390	884.5	695,780	925.2	695,520	935.5	1,172,030	908.3	1,169,900	915.3
Under 1 year					8,830	² 769.0	9,520	² 832.4	15,630	² 793.0	16,810	² 856.3
1–4 years	} 2,140	85.0	1,960	78.1	2,150	46.3	2,490	53.2	3,510	43.9	4,180	51.6
5–14 years					3,080	26.8	2,750	24.4	5,350	27.2	4,880	25.1
15–24 years					2,390	153.8	2,470	158.5	14,670	137.7	14,930	140.3
25–34 years	2,890	169.1	3,490	201.2	22,050	187.4	24,710	207.7	39,720	196.0	43,170	210.3
35–44 years	5,280	290.4	6,150	343.5	39,120	314.3	41,230	338.3	68,780	322.5	70,430	336.8
45–54 years	7,500	560.7	7,870	610.1	52,690	578.2	53,170	608.4	90,320	579.6	88,880	594.4
55–64 years	11,040	1,283.3	11,540	1,352.8	83,270	1,413.7	82,690	1,420.4	141,050	1,396.1	142,570	1,424.1
65–74 years	22,580	3,200.7	22,580	3,189.3	161,350	3,326.7	164,630	3,404.0	270,710	3,245.5	274,880	3,302.7
75–84 years	25,100	6,610.3	26,120	7,109.2	194,610	7,529.6	190,860	7,659.4	322,900	7,307.1	317,480	7,433.4
85 years and over	15,010	16,813.5	14,170	16,437.5	113,540	18,702.9	108,160	18,510.4	187,180	18,050.1	179,060	17,888.1
Not stated	30	...	40	...	420	...	390	...	680	...	610	...
Age-adjusted rate ³	601.1	...	631.3	...	643.3	...	661.0	...	636.2	...	650.9
All races, female ¹												
All ages	91,840	799.4	91,440	800.6	681,080	864.8	677,500	869.4	1,138,900	842.7	1,132,230	845.0
Under 1 year					7,610	² 694.2	7,800	² 715.7	12,750	² 678.6	13,450	² 718.5
1–4 years	} 1,620	67.5	1,660	69.4	1,630	36.8	1,860	41.5	2,660	34.9	3,020	39.1
5–14 years					2,090	19.1	1,840	17.2	3,460	18.5	3,350	18.1
15–24 years					850	57.0	590	39.5	4,840	47.4	4,450	43.5
25–34 years	1,430	83.5	1,320	76.1	9,180	77.7	9,050	76.0	16,010	78.9	15,580	75.9
35–44 years	2,590	140.3	2,390	131.3	18,150	143.6	18,010	145.4	31,890	147.2	31,200	146.8
45–54 years	4,530	323.5	4,600	340.6	30,410	318.6	31,090	339.6	51,670	316.8	51,980	331.9
55–64 years	7,790	822.1	7,650	812.1	55,820	860.0	55,550	863.9	94,240	846.3	93,990	849.7
65–74 years	16,660	1,899.2	16,690	1,885.7	123,380	2,042.9	124,040	2,049.2	204,300	1,966.3	208,620	2,001.2
75–84 years	27,350	4,648.8	26,920	4,645.5	200,200	4,980.1	198,550	5,033.5	334,080	4,850.9	333,000	4,914.4
85 years and over	28,990	12,766.5	29,610	13,327.0	227,600	14,691.1	225,020	14,925.1	379,030	14,286.8	369,620	14,287.6
Not stated	30	...	20	...	160	...	240	...	290	...	340	...
Age-adjusted rate ³	371.4	...	368.1	...	389.9	...	394.1	...	381.9	...	386.5
White												
All ages	159,000	854.6	161,470	871.8	1,186,080	929.6	1,181,140	934.2	1,986,980	907.2	1,977,750	909.5
Under 1 year					10,710	² 611.4	11,410	² 653.7	18,730	² 623.1	19,880	² 661.6
1–4 years	} 2,400	61.7	2,570	66.2	2,540	35.5	2,960	40.8	4,220	34.2	4,830	38.6
5–14 years					3,650	20.6	3,330	19.0	6,410	21.1	5,830	19.3
15–24 years					2,120	87.5	2,200	90.3	13,620	81.8	13,550	81.3
25–34 years	3,160	113.5	3,520	124.2	21,870	113.9	24,100	123.8	38,600	116.8	41,890	124.7
35–44 years	5,630	184.7	6,140	204.2	41,170	197.2	41,720	203.8	72,420	202.3	72,280	205.7
45–54 years	9,210	394.3	9,720	430.5	63,210	396.9	64,800	423.2	108,380	397.9	107,850	411.5
55–64 years	15,060	965.5	15,710	1,012.8	112,970	1,057.0	112,280	1,059.7	190,820	1,040.7	192,480	1,055.9
65–74 years	34,090	2,434.4	33,770	2,389.8	247,650	2,568.1	248,900	2,575.0	412,190	2,484.0	417,040	2,505.5
75–84 years	46,910	5,344.4	47,570	5,541.1	354,690	5,922.5	350,490	6,005.3	589,880	5,753.2	585,510	5,844.0
85 years and over	40,380	14,030.1	40,230	14,336.4	313,600	15,981.9	307,140	16,133.2	519,980	15,484.8	505,080	15,464.8
Not stated	40	...	30	...	410	...	470	...	740	...	690	...
Age-adjusted rate ³	448.1	...	464.2	...	478.7	...	487.4	...	471.2	...	478.8

See footnotes at end of table.

Table 5. Provisional number of deaths and death rates, by age, race, and sex, and age-adjusted death rates by race and sex: United States, July 1995 and 1996, cumulative figures 1995 and 1996, and 12 months ending with July 1995 and 1996—Con.

[Data are provisional, estimated from a 10-percent sample of deaths. Age-specific rates on an annual basis per 100,000 population in specified group; age-adjusted rates per 100,000 U.S. standard million population; see [Technical notes](#). Because of rounding of estimates, figures may not add to totals. For method of computation and information on standard errors of the estimates, see [Technical notes](#)]

Age, race, and sex	July				January–July				12 months ending with July			
	1996		1995		1996		1995		1996		1995	
	Number	Rate	Number	Rate	Number	Rate	Number	Rate	Number	Rate	Number	Rate
White male												
All ages	79,620	871.9	82,150	904.2	593,190	947.2	592,110	954.9	997,130	927.7	994,410	932.4
Under 1 year	} 1,430		} 71.7		5,800	² 645.7	6,280	² 701.4	10,520	² 681.8	10,970	² 711.9
1–4 years	}		}		1,500	40.8	1,800	48.4	2,510	39.7	2,910	45.3
5–14 years	}		}		2,150	23.7	1,940	21.6	3,910	25.0	3,410	22.0
15–24 years	1,520	122.2	1,760	140.9	10,090	118.1	10,300	120.4	18,280	124.5	18,480	125.6
25–34 years	2,170	154.4	2,630	183.7	15,820	163.2	17,960	182.8	28,150	168.7	31,350	184.9
35–44 years	3,720	243.3	4,440	294.5	28,410	271.3	29,510	287.4	50,090	279.0	50,900	289.0
45–54 years	5,850	507.1	6,030	540.8	40,380	513.3	41,130	544.3	69,630	517.6	68,400	528.7
55–64 years	8,890	1,184.4	9,540	1,279.6	67,920	1,321.1	68,220	1,340.0	115,190	1,306.0	117,630	1,343.3
65–74 years	19,890	3,162.7	19,810	3,131.2	141,450	3,268.5	143,500	3,319.1	236,110	3,171.8	239,850	3,222.9
75–84 years	22,520	6,515.1	23,630	7,070.5	175,530	7,462.1	172,650	7,615.9	291,450	7,248.2	286,870	7,380.2
85 years and over	13,620	16,873.4	12,920	16,607.3	103,830	18,914.7	98,520	18,689.2	170,740	18,202.6	163,180	18,050.9
Not stated	20	...	20	...	310	...	300	...	550	...	450	...
Age-adjusted rate ³	566.1	...	599.3	...	608.6	...	625.1	...	601.4	...	614.5
White female												
All ages	79,370	837.9	79,320	840.6	592,890	912.5	589,030	914.4	989,850	887.5	983,340	887.5
Under 1 year	} 970		} 51.3		4,910	² 576.4	5,130	² 602.3	8,210	² 561.2	8,910	² 608.6
1–4 years	}		}		1,040	29.5	1,160	32.8	1,710	28.5	1,920	31.5
5–14 years	}		}		1,490	17.2	1,390	16.3	2,490	16.8	2,430	16.6
15–24 years	600	50.8	450	37.9	3,530	43.5	3,250	39.9	6,310	45.3	5,910	42.3
25–34 years	990	71.8	890	63.4	6,050	63.6	6,140	63.7	10,450	63.8	10,540	63.4
35–44 years	1,910	125.7	1,700	113.4	12,760	122.7	12,210	119.6	22,340	125.2	21,370	122.0
45–54 years	3,360	284.2	3,690	322.8	22,830	283.1	23,670	305.6	38,750	281.1	39,450	297.2
55–64 years	6,170	762.5	6,180	767.1	45,050	812.7	44,060	800.4	75,630	794.8	74,850	790.2
65–74 years	14,210	1,842.0	13,970	1,790.0	106,200	1,997.8	105,400	1,973.3	176,090	1,924.5	177,180	1,925.2
75–84 years	24,380	4,582.0	23,940	4,566.2	179,160	4,926.7	177,840	4,982.0	298,430	4,788.7	298,640	4,870.2
85 years and over	26,760	12,921.9	27,310	13,465.4	209,770	14,842.8	208,620	15,155.1	349,250	14,431.8	341,900	14,475.0
Not stated	20	...	10	...	100	...	170	...	190	...	240	...
Age-adjusted rate ³	349.7	...	350.6	...	370.7	...	372.4	...	362.3	...	365.2
Black												
All ages	23,330	819.3	23,130	821.5	168,040	862.0	169,080	881.3	286,000	855.7	285,340	865.7
Under 1 year	} 1,080		} 140.1		5,160	² 1,408.1	5,320	² 1,469.6	8,780	² 1,402.6	9,380	² 1,512.9
1–4 years	}		}		1,060	75.4	1,250	85.8	1,670	67.9	2,090	83.9
5–14 years	}		}		1,240	35.6	1,070	31.1	1,940	32.6	1,960	33.4
15–24 years	1,030	221.9	720	155.4	5,130	161.1	5,090	161.1	8,640	158.0	9,230	170.0
25–34 years	1,000	218.2	1,110	241.1	8,410	267.0	8,780	278.6	15,490	286.3	15,150	278.4
35–44 years	2,010	447.4	2,170	492.9	14,650	476.3	16,040	536.2	25,740	489.2	26,770	521.4
45–54 years	2,400	831.4	2,500	909.1	17,510	892.3	17,180	924.8	29,870	891.4	29,130	918.3
55–64 years	3,320	1,818.1	3,110	1,720.8	23,090	1,846.6	22,790	1,853.6	39,270	1,831.6	38,720	1,833.3
65–74 years	4,530	3,275.1	4,810	3,506.7	32,420	3,422.5	35,140	3,756.3	54,950	3,379.5	58,530	3,637.7
75–84 years	4,870	6,820.6	4,710	6,697.6	35,100	7,184.8	33,790	7,057.2	58,740	7,017.9	56,500	6,865.1
85 years and over	3,070	12,807.7	3,030	13,020.4	24,100	14,763.5	22,490	14,201.2	40,690	14,532.1	37,670	13,849.3
Not stated	20	...	20	...	170	...	140	...	230	...	230	...
Age-adjusted rate ³	726.1	...	731.1	...	755.8	...	783.6	...	752.1	...	771.7
Black male												
All ages	12,480	923.7	12,210	914.3	89,990	972.9	90,240	991.6	153,910	970.6	152,940	978.4
Under 1 year	} 550		} 140.6		2,710	² 1,468.8	2,870	² 1,553.9	4,610	² 1,454.3	5,230	² 1,660.3
1–4 years	}		}		560	77.1	630	85.9	860	69.0	1,100	87.1
5–14 years	}		}		740	41.9	730	42.2	1,150	38.1	1,260	42.4
15–24 years	800	344.5	580	250.5	4,040	253.5	4,060	257.8	6,830	249.5	7,380	272.1
25–34 years	590	271.9	770	353.7	5,650	378.9	6,130	410.9	10,540	411.4	10,550	410.0
35–44 years	1,410	672.1	1,500	730.4	9,660	672.9	10,660	762.0	17,030	693.4	17,720	739.9
45–54 years	1,410	1,078.2	1,680	1,347.5	11,030	1,241.6	10,760	1,276.6	18,630	1,226.5	18,330	1,275.6
55–64 years	1,910	2,406.7	1,790	2,280.9	13,570	2,498.6	12,680	2,373.0	22,900	2,457.1	21,760	2,370.4
65–74 years	2,420	4,183.2	2,350	4,117.5	17,320	4,379.3	18,410	4,731.8	30,070	4,435.1	30,530	4,563.5
75–84 years	2,250	8,596.9	2,060	8,058.1	16,480	9,199.5	15,530	8,922.3	27,280	8,886.0	26,180	8,755.9
85 years and over	1,110	16,179.2	940	14,009.8	8,110	17,259.7	7,710	16,781.1	13,900	17,160.5	12,770	16,164.6
Not stated	10	...	10	...	110	...	80	...	130	...	140	...
Age-adjusted rate ³	949.0	...	955.7	...	1,001.8	...	1,027.1	...	999.7	...	1,015.1

See footnotes at end of table.

Table 5. Provisional number of deaths and death rates, by age, race, and sex, and age-adjusted death rates by race and sex: United States, July 1995 and 1996, cumulative figures 1995 and 1996, and 12 months ending with July 1995 and 1996—Con.

[Data are provisional, estimated from a 10-percent sample of deaths. Age-specific rates on an annual basis per 100,000 population in specified group; age-adjusted rates per 100,000 U.S. standard million population; see [Technical notes](#). Because of rounding of estimates, figures may not add to totals. For method of computation and information on standard errors of the estimates, see [Technical notes](#)]

Age, race, and sex	July				January–July				12 months ending with July							
	1996		1995		1996		1995		1996		1995					
	Number	Rate	Number	Rate	Number	Rate	Number	Rate	Number	Rate	Number	Rate				
Black female																
All ages	10,860	725.8	10,920	737.7	78,050	762.1	78,850	781.7	132,090	752.0	132,410	764.1				
Under 1 year	} 520	136.9	410	108.8	2,440	² 1,356.8	2,450	² 1,377.2	4,170	² 1,349.5	4,150	² 1,360.7				
1–4 years					500	70.8	620	87.0	810	66.7	990	80.7				
5–14 years					230	99.2	140	60.4	1,090	69.1	1,030	65.8	1,810	66.2	1,860	68.5
15–24 years					400	165.8	340	140.1	2,760	166.4	2,650	159.9	4,950	173.7	4,590	160.0
25–34 years	600	250.6	670	285.2	4,990	304.8	5,390	337.6	8,710	310.4	9,050	330.4				
35–44 years	990	627.1	820	545.5	6,480	602.8	6,420	631.2	11,240	613.5	10,800	622.5				
45–54 years	1,410	1,365.6	1,320	1,290.9	9,520	1,345.3	10,110	1,453.3	16,370	1,350.7	16,960	1,420.4				
55–64 years	2,110	2,622.3	2,470	3,084.0	15,100	2,735.4	16,730	3,061.6	24,890	2,625.5	28,000	2,978.7				
65–74 years	2,620	5,792.7	2,650	5,920.6	18,620	6,016.2	18,260	5,983.7	31,450	5,934.0	30,310	5,784.4				
75–84 years	1,960	11,455.8	2,080	12,559.1	15,990	13,754.7	14,790	13,147.7	26,790	13,462.3	24,900	12,901.6				
85 years and over	10	...	10	...	60	...	60	...	100	...	90	...				
Not stated	553.4	...	552.5	...	566.1	...	594.4	...	560.9	...	582.1				
Age-adjusted rate ³	553.4	...	552.5	...	566.1	...	594.4	...	560.9	...	582.1				

... Category not applicable.

¹Includes races other than white and black.

²Death rates for "Under 1 year" (based on population estimates) differ from infant mortality rates (based on live births); see [table 9](#) for infant mortality rates.

³For method of computation, see [Technical notes](#).

NOTES: Figures include all revisions received from the States. Cumulative and 12-month figures for the current year reflect revisions received for previous months, and figures for earlier years may differ from those previously published.

Table 6. Provisional number of deaths and death rates for 72 selected causes, Human immunodeficiency virus infection, and Alzheimer's disease: United States, July 1995 and 1996, cumulative figures 1995 and 1996, and 12 months ending with July 1995 and 1996

[Data are provisional, estimated from a 10-percent sample of deaths. Rates on an annual basis per 100,000 estimated population. Because of rounding of estimates, figures may not add to totals. For method of computation and information on standard errors of the estimates, see [Technical notes](#). For explanation of asterisks preceding cause-of-death categories, see [Technical notes](#)]

Cause of death (Based on the Ninth Revision, International Classification of Diseases, 1975)	July		July		January–July		January–July		12 months ending with July		12 months ending with July	
	1996		1995		1996		1995		1996		1995	
	Number	Rate	Number	Rate	Number	Rate	Number	Rate	Number	Rate	Number	Rate
All causes	186,000	827.1	188,000	841.9	1,377,000	894.3	1,373,000	901.8	2,313,000	875.4	2,302,000	879.4
Shigellosis and amebiasis	—	*	—	*	—	*	—	*	—	*	—	*
Certain other intestinal infections	90	*	70	*	500	0.3	400	0.3	740	0.3	670	0.3
Tuberculosis	50	*	70	*	550	0.3	790	0.5	1,130	0.4	1,360	0.5
Tuberculosis of respiratory system	30	*	60	*	440	0.3	590	0.4	920	0.3	990	0.4
Other tuberculosis	20	*	10	*	110	0.1	200	0.1	210	0.1	370	0.1
Whooping cough	—	*	—	*	10	*	—	*	20	*	—	*
Streptococcal sore throat, scarlatina, and erysipelas	—	*	—	*	—	*	10	*	—	*	10	*
Meningococcal infection	20	*	10	*	190	0.1	240	0.2	250	0.1	350	0.1
Septicemia	1,700	7.6	1,740	7.8	13,010	8.4	12,940	8.5	21,270	8.1	20,730	7.9
Acute poliomyelitis	—	*	—	*	—	*	—	*	—	*	—	*
Measles	—	*	—	*	—	*	—	*	—	*	—	*
Viral hepatitis	250	1.1	330	1.5	2,130	1.4	2,050	1.3	3,600	1.4	3,350	1.3
Syphilis	—	*	—	*	—	*	100	*	30	*	130	0.0
All other infectious and parasitic diseases ¹	2,860	12.7	3,730	16.7	24,150	15.7	28,750	18.9	44,410	16.8	49,190	18.8
Malignant neoplasms, including neoplasms of lymphatic and hematopoietic tissues	45,130	200.9	45,390	203.4	315,860	205.1	313,000	205.5	539,300	204.1	540,210	206.3
Malignant neoplasms of lip, oral cavity, and pharynx	720	3.2	510	2.3	4,590	3.0	4,670	3.1	7,890	3.0	7,880	3.0
Malignant neoplasms of digestive organs and peritoneum	10,270	45.7	10,430	46.7	73,500	47.7	72,610	47.7	126,150	47.8	126,610	48.4
Malignant neoplasms of respiratory and intrathoracic organs	12,610	56.1	13,260	59.4	92,350	60.0	90,300	59.3	156,990	59.4	154,990	59.2
Malignant neoplasm of breast	3,760	16.7	3,870	17.3	25,740	16.7	25,830	17.0	43,920	16.6	44,410	17.0
Malignant neoplasms of genital organs	5,090	22.7	5,160	23.1	35,070	22.8	35,530	23.3	60,340	22.8	61,890	23.6
Malignant neoplasms of urinary organs	1,920	8.5	1,990	8.9	13,270	8.6	13,860	9.1	22,500	8.5	22,830	8.7
Malignant neoplasms of all other and unspecified sites	5,660	25.2	5,710	25.6	38,510	25.0	38,200	25.1	65,900	24.9	66,490	25.4
Leukemia	1,770	7.9	1,760	7.9	12,310	8.0	11,590	7.6	20,350	7.7	20,060	7.7
Other malignant neoplasms of lymphatic and hematopoietic tissues	3,340	14.9	2,710	12.1	20,520	13.3	20,410	13.4	35,260	13.3	35,040	13.4
Benign neoplasms, carcinoma in situ, and neoplasms of uncertain behavior and of unspecified nature	630	2.8	630	2.8	4,770	3.1	5,320	3.5	7,840	3.0	8,320	3.2
Diabetes mellitus	5,230	23.3	4,910	22.0	36,580	23.7	35,360	23.2	59,550	22.5	58,130	22.2
Nutritional deficiencies	380	1.7	300	1.3	2,390	1.5	2,150	1.4	4,070	1.5	3,460	1.3
Anemias	330	1.5	330	1.5	2,270	1.5	2,580	1.7	3,970	1.5	4,380	1.7
Meningitis	—	*	80	*	350	0.2	550	0.4	590	0.2	920	0.4
Major cardiovascular diseases	74,200	330.3	76,240	341.6	564,890	366.9	565,340	371.3	942,060	356.6	940,320	359.2
Diseases of heart	57,920	257.9	59,070	264.7	439,410	285.4	438,540	288.0	731,740	277.0	729,800	278.8
Rheumatic fever and rheumatic heart disease	430	1.9	460	2.1	3,020	2.0	3,150	2.1	4,910	1.9	5,240	2.0
Hypertensive heart disease	2,280	10.1	2,290	10.3	15,840	10.3	14,710	9.7	25,620	9.7	24,280	9.3
Hypertensive heart and renal disease	210	0.9	140	0.6	1,320	0.9	1,430	0.9	2,230	0.8	2,440	0.9
Ischemic heart disease	37,520	167.0	38,090	170.7	284,000	184.5	287,020	188.5	474,380	179.6	478,470	182.8
Acute myocardial infarction	16,980	75.6	17,250	77.3	128,850	83.7	130,720	85.8	215,330	81.5	219,870	84.0
Other acute and subacute forms of ischemic heart disease	280	1.2	230	1.0	1,580	1.0	1,560	1.0	2,620	1.0	2,690	1.0
Angina pectoris	60	*	60	*	480	0.3	420	0.3	790	0.3	800	0.3
Old myocardial infarction and other forms of chronic ischemic heart disease	20,200	89.9	20,550	92.1	153,080	99.4	154,330	101.3	255,640	96.8	255,100	97.4
Other diseases of endocardium	1,360	6.0	1,220	5.5	10,000	6.5	9,370	6.1	16,160	6.1	15,360	5.9
All other forms of heart disease	16,130	71.8	16,880	75.6	125,230	81.3	122,860	80.7	208,440	78.9	204,020	77.9
Hypertension with or without renal disease	770	3.4	1,050	4.7	7,180	4.7	7,630	5.0	12,020	4.5	11,950	4.6
Cerebrovascular diseases	12,230	54.4	13,110	58.7	93,860	61.0	94,020	61.7	156,590	59.3	156,110	59.6
Intracerebral and other intracranial hemorrhage	1,750	7.8	1,960	8.8	13,470	8.7	13,070	8.6	22,100	8.4	22,000	8.4
Cerebral thrombosis and unspecified occlusion of cerebral arteries	920	4.1	990	4.4	7,050	4.6	8,090	5.3	12,350	4.7	14,120	5.4
Cerebral embolism	60	*	50	*	380	0.2	340	0.2	680	0.3	680	0.3
All other and late effects of cerebrovascular diseases	9,490	42.2	10,120	45.3	72,960	47.4	72,520	47.6	121,450	46.0	119,310	45.6

See footnotes at end of table.

Table 6. Provisional number of deaths and death rates for 72 selected causes, Human immunodeficiency virus infection, and Alzheimer's disease: United States, July 1995 and 1996, cumulative figures 1995 and 1996, and 12 months ending with July 1995 and 1996—Con.

[Data are provisional, estimated from a 10-percent sample of deaths. Rates on an annual basis per 100,000 estimated population. Because of rounding of estimates, figures may not add to totals. For method of computation and information on standard errors of the estimates, see [Technical notes](#). For explanation of asterisks preceding cause-of-death categories, see [Technical notes](#)]

Cause of death (Based on the Ninth Revision, International Classification of Diseases, 1975)	July		January–July				12 months ending with July						
	1996		1995		1996		1995		1996		1995		
	Number	Rate	Number	Rate	Number	Rate	Number	Rate	Number	Rate	Number	Rate	
Cerebrovascular diseases—Con.													
Atherosclerosis	440	1,340	6.0	1,150	5.1	9,310	6.0	9,990	6.5	15,720	6.0	16,970	6.5
Other diseases of arteries, arterioles, and capillaries441–448	1,940	8.6	1,860	8.3	15,130	9.8	15,160	10.0	25,990	9.8	25,490	9.7
Acute bronchitis and bronchiolitis466	—	*	40	*	290	0.2	420	0.3	420	0.2	520	0.2
Pneumonia and influenza480–487	5,260	23.4	5,190	23.3	50,700	32.9	50,320	33.1	80,550	30.5	79,350	30.3
Pneumonia480–486	5,260	23.4	5,190	23.3	50,240	32.6	49,930	32.8	80,010	30.3	78,940	30.2
Influenza487	—	*	—	*	460	0.3	400	0.3	540	0.2	420	0.2
Chronic obstructive pulmonary diseases and allied conditions490–496	8,140	36.2	7,930	35.5	65,740	42.7	64,960	42.7	104,330	39.5	102,900	39.3
Bronchitis, chronic and unspecified490–491	210	0.9	280	1.2	2,080	1.4	2,000	1.3	3,060	1.2	3,400	1.3
Emphysema492	1,210	5.4	1,370	6.1	10,600	6.9	11,320	7.4	16,700	6.3	18,080	6.9
Asthma493	390	1.7	430	1.9	2,900	1.9	3,440	2.3	4,980	1.9	5,430	2.1
Other chronic obstructive pulmonary diseases and allied conditions494–496	6,320	28.1	5,850	26.2	50,160	32.6	48,210	31.7	79,590	30.1	75,990	29.0
Ulcer of stomach and duodenum531–533	280	1.2	530	2.4	2,960	1.9	3,580	2.3	5,260	2.0	5,730	2.2
Appendicitis540–543	30	*	30	*	280	0.2	260	0.2	420	0.2	400	0.2
Hernia of abdominal cavity and intestinal obstruction without mention of hernia550–553,560	500	2.2	390	1.7	3,790	2.5	3,700	2.4	6,050	2.3	6,110	2.3
Chronic liver disease and cirrhosis571	1,990	8.9	2,080	9.3	14,340	9.3	15,050	9.9	24,380	9.2	25,850	9.9
Cholelithiasis and other disorders of gallbladder574–575	300	1.3	230	1.0	1,580	1.0	1,600	1.0	2,670	1.0	2,630	1.0
Nephritis and nephrotic syndrome, and nephrosis580–589	2,090	9.3	2,020	9.0	16,010	10.4	15,400	10.1	26,240	9.9	25,690	9.8
Acute glomerulonephritis and nephrotic syndrome580–581	20	*	40	*	120	0.1	170	0.1	230	0.1	240	0.1
Chronic glomerulonephritis, nephritis and nephropathy, not specified as acute or chronic, and renal sclerosis, unspecified582–583,587	110	0.5	80	*	1,010	0.7	690	0.4	1,650	0.6	1,400	0.5
Renal failure, disorders resulting from impaired renal function, and small kidney of unknown cause584–586,588–589	1,950	8.7	1,900	8.5	14,880	9.6	14,530	9.6	24,350	9.2	24,060	9.2
Infections of kidney590	90	*	90	*	610	0.4	490	0.3	850	0.3	890	0.3
Hyperplasia of prostate600	20	*	60	*	260	0.2	260	0.2	430	0.2	460	0.2
Complications of pregnancy, childbirth, and the puerperium630–676	20	*	20	*	180	0.1	130	0.1	370	0.1	250	0.1
Pregnancy with abortive outcome630–638	10	*	—	*	20	*	—	*	40	*	10	*
Other complications of pregnancy, childbirth, and the puerperium640–676	10	*	20	*	160	0.1	130	0.1	330	0.1	240	0.1
Congenital anomalies740–759	800	3.6	850	3.8	6,690	4.3	6,700	4.4	11,540	4.4	11,930	4.6
Certain conditions originating in the perinatal period760–779	1,160	5.2	1,330	6.0	7,550	4.9	8,000	5.2	12,950	4.9	13,870	5.3
Birth trauma, intrauterine hypoxia, birth asphyxia, and respiratory distress syndrome767–769	210	0.9	190	0.8	1,180	0.8	1,140	0.7	2,020	0.8	2,060	0.8
Other conditions originating in the perinatal period760–766,770–779	960	4.3	1,140	5.1	6,360	4.1	6,860	4.5	10,920	4.1	11,810	4.5
Symptoms, signs, and ill-defined conditions780–799	3,670	16.3	3,460	15.5	24,670	16.0	24,430	16.0	42,460	16.1	40,740	15.6
All other diseasesResidual	17,870	79.6	16,770	75.1	130,340	84.7	125,760	82.6	218,030	82.5	208,860	79.8
Accidents and adverse effectsE800–E949	8,180	36.4	8,390	37.6	52,410	34.0	50,340	33.1	91,860	34.8	88,460	33.8
Motor vehicle accidentsE810–E825	3,650	16.2	4,050	18.1	24,700	16.0	23,720	15.6	44,760	16.9	42,810	16.4
All other accidents and adverse effectsE800–E807,E826–E949	4,530	20.2	4,340	19.4	27,710	18.0	26,620	17.5	47,100	17.8	45,650	17.4
SuicideE950–E959	2,590	11.5	2,550	11.4	17,410	11.3	17,850	11.7	29,400	11.1	30,630	11.7
Homicide and legal interventionE960–E978	1,720	7.7	1,780	8.0	12,070	7.8	12,850	8.4	21,600	8.2	22,820	8.7
All other external causesE980–E999	170	0.8	260	1.2	1,360	0.9	1,340	0.9	2,290	0.9	2,490	1.0
Human immunodeficiency virus infection ²	*042–*044	2,280	10.1	3,230	14.5	20,480	13.3	24,780	16.3	38,070	14.4	42,640	16.3
Alzheimer's disease331.0	1,710	7.6	1,530	6.9	13,010	8.4	11,890	7.8	21,590	8.2	19,740	7.5

— Quantity zero. * Figure does not meet standards of reliability or precision; see [Technical notes](#). 0.0 Quantity more than zero but less than 0.05.

¹Includes data for deaths due to Human immunodeficiency virus infection (categories *042–*044) shown separately below; see [Technical notes](#).

²Included in All other infectious and parasitic diseases shown above.

NOTES: Figures include all revisions received from the States. Cumulative and 12-month figures for the current year reflect revisions received for previous months, and figures for earlier years may differ from those previously published.

Table 7. Provisional number of deaths and death rates for 16 selected subcategories of Malignant neoplasms, including neoplasms of lymphatic and hematopoietic tissues: United States, July 1995 and 1996, cumulative figures 1995 and 1996, and 12 months ending with July 1995 and 1996

[Data are provisional, estimated from a 10-percent sample of deaths. Rates on an annual basis per 100,000 estimated population. Because of rounding of estimates, figures may not add to totals. For method of computation and information on standard errors of the estimates, see [Technical notes](#)]

Cause of death (Based on the Ninth Revision, International Classification of Diseases, 1975)	July				January–July				12 months ending with July			
	1996		1995		1996		1995		1996		1995	
	Number	Rate	Number	Rate	Number	Rate	Number	Rate	Number	Rate	Number	Rate
Malignant neoplasms, including neoplasms of lymphatic and hematopoietic tissues ¹140–208	45,130	200.9	45,390	203.4	315,860	205.1	313,000	205.5	539,300	204.1	540,210	206.3
Malignant neoplasm of esophagus150	740	3.3	910	4.1	6,420	4.2	6,180	4.1	10,600	4.0	10,490	4.0
Malignant neoplasm of stomach151	1,230	5.5	1,140	5.1	7,740	5.0	8,000	5.3	13,550	5.1	13,950	5.3
Malignant neoplasms of colon, rectum, rectosigmoid junction, and anus153,154	4,810	21.4	4,610	20.7	33,160	21.5	32,680	21.5	56,310	21.3	57,710	22.0
Malignant neoplasm of pancreas157	2,130	9.5	2,150	9.6	16,060	10.4	15,810	10.4	27,630	10.5	27,260	10.4
Malignant neoplasms of trachea, bronchus, and lung162	12,110	53.9	12,840	57.5	89,230	57.9	87,240	57.3	151,640	57.4	149,630	57.2
Malignant melanoma of skin172	710	3.2	620	2.8	4,110	2.7	4,330	2.8	6,800	2.6	7,190	2.7
Malignant neoplasm of cervix uteri180	400	1.8	390	1.7	2,500	1.6	2,530	1.7	4,740	1.8	4,450	1.7
Malignant neoplasms of body of uterus and of uterus, part unspecified179,182	470	2.1	560	2.5	3,360	2.2	3,440	2.3	6,030	2.3	5,810	2.2
Malignant neoplasm of ovary183.0	1,170	5.2	1,090	4.9	7,930	5.1	7,960	5.2	13,550	5.1	14,030	5.4
Malignant neoplasm of prostate185	2,910	13.0	3,000	13.4	20,190	13.1	20,560	13.5	34,180	12.9	35,740	13.7
Malignant neoplasm of bladder188	880	3.9	870	3.9	6,540	4.2	6,950	4.6	11,130	4.2	11,210	4.3
Malignant neoplasms of kidney and other and unspecified urinary organs189	1,040	4.6	1,120	5.0	6,720	4.4	6,900	4.5	11,370	4.3	11,620	4.4
Malignant neoplasms of brain and other and unspecified parts of nervous system191,192	980	4.4	960	4.3	6,770	4.4	6,430	4.2	11,880	4.5	11,820	4.5
Hodgkin's disease201	130	0.6	150	0.7	930	0.6	910	0.6	1,550	0.6	1,540	0.6
Malignant lymphoma other than Hodgkin's disease200,202	2,280	10.1	1,780	8.0	13,330	8.6	13,350	8.8	23,240	8.8	22,810	8.7
Multiple myeloma and other immunoproliferative neoplasms203	920	4.1	780	3.5	6,260	4.1	6,150	4.0	10,470	4.0	10,700	4.1

¹Includes figures for subcategories not shown below.

NOTES: Figures include all revisions received from the States. Cumulative and 12-month figures for the current year reflect revisions received for previous months, and figures for earlier years may differ from those previously published.

Table 8. Provisional number of deaths and death rates for firearm mortality: United States, July 1995 and 1996, cumulative figures 1995 and 1996, and 12 months ending with July 1995 and 1996

[Data are provisional, estimated from a 10-percent sample of deaths. Rates on an annual basis per 100,000 estimated population. Because of rounding of estimates, figures may not add to totals. For method of computation and information on standard errors of the estimates, see [Technical notes](#)]

Cause of death (Based on the Ninth Revision, International Classification of Diseases, 1975)	July				January–July				12 months ending with July			
	1996		1995		1996		1995		1996		1995	
	Number	Rate	Number	Rate	Number	Rate	Number	Rate	Number	Rate	Number	Rate
Injury by firearms.E922,E955.0–E955.4,E965.0–965.4,E970,E985.0–E985.4	2,750	12.2	2,760	12.4	20,050	13.0	20,510	13.5	35,090	13.3	36,770	14.0
Accident caused by firearm missileE922	100	*	70	*	700	0.4	680	0.4	1,390	0.5	1,400	0.5
Suicide by firearmsE955.0–E955.4	1,480	6.6	1,480	6.6	10,750	7.0	10,630	7.0	18,100	6.9	18,630	7.1
Homicide and legal intervention by firearms.E965.0–E965.4,E970	1,160	5.2	1,210	5.4	8,460	5.5	9,060	5.9	15,360	5.8	16,420	6.3
Injury by firearms, undetermined whether accidentally or purposely inflicted.E985.0–E985.4	–	*	–	*	130	0.1	140	0.1	240	0.1	320	0.1

– Quantity zero.

* Figure does not meet standards of reliability or precision; see [Technical notes](#).

NOTES: Figures include all revisions received from the States. Cumulative and 12-month figures for the current year reflect revisions received for previous months, and figures for earlier years may differ from those previously published.

Table 9. Provisional number of deaths under 1 year and infant mortality rates, by age and for 10 selected causes: United States, July 1995 and 1996, cumulative figures 1995 and 1996, and 12 months ending with July 1995 and 1996

[Data are provisional, estimated from a 10-percent sample of deaths. Rates on an annual basis per 100,000 live births. Because of rounding of estimates, figures may not add to totals. For method of computation and information on standard errors of the estimates, see [Technical notes](#)]

Age and cause of death (Based on the Ninth Revision, International Classification of Diseases, 1975)	July				January–July				12 months ending with July			
	1996		1995		1996		1995		1996		1995	
	Number	Rate	Number	Rate	Number	Rate	Number	Rate	Number	Rate	Number	Rate
Total, under 1 year	2,300	679.9	2,400	714.7	16,400	731.7	17,400	764.3	28,400	733.6	30,300	770.0
Under 28 days	1,650	490.5	1,540	459.7	10,780	479.6	10,900	479.8	18,560	479.6	19,340	491.3
28 days–11 months	640	190.3	840	250.8	5,660	251.8	6,420	282.6	9,830	254.0	10,920	277.4
Certain gastrointestinal diseases.008–009,535,555–558	40	*	–	*	140	6.2	120	5.3	210	5.4	230	5.8
Pneumonia and influenza.480–487	20	*	10	*	210	9.3	220	9.7	350	9.0	340	8.6
Congenital anomalies740–759	450	133.8	420	125.4	3,670	163.3	3,620	159.4	6,220	160.7	6,680	169.7
Disorders relating to short gestation and unspecified low birthweight765	290	86.2	390	116.4	2,270	101.0	2,260	99.5	3,560	92.0	3,810	96.8
Birth trauma767	20	*	10	*	130	5.8	70	*	250	6.5	150	3.8
Intrauterine hypoxia and birth asphyxia768	80	*	40	*	360	16.0	290	12.8	540	14.0	540	13.7
Respiratory distress syndrome.769	100	*	150	44.8	660	29.4	740	32.6	1,150	29.7	1,310	33.3
Other conditions originating in the perinatal period.760–764,766,770–779	660	196.2	740	220.9	4,050	180.2	4,500	198.1	7,300	188.7	7,850	199.4
Sudden infant death syndrome798.0	120	35.7	140	41.8	1,630	72.5	1,820	80.1	2,720	70.3	3,310	84.1
All other causesResidual	520	154.6	490	146.3	3,330	148.2	3,670	161.6	6,100	157.6	6,050	153.7

– Quantity zero.

* Figure does not meet standards of reliability or precision; see [Technical notes](#).

NOTES: Figures include all revisions received from the States. Cumulative and 12-month figures for the current year reflect revisions received for previous months, and figures for earlier years may differ from those previously published.

Technical notes

Nature and sources of data

Data in this report are provisional unless otherwise specified and include only events occurring within the United States (50 States and the District of Columbia). Mortality data exclude fetal deaths. Data for the Commonwealth of Puerto Rico are not included in the U.S. totals.

Birth, death, and infant death figures in [tables 2](#) and [4](#) for each State are estimates by State of residence. These estimates are derived by applying adjustment ratios to the actual counts of certificates for all events occurring in the State and received in registration offices during a 1-month period regardless of date of the event. The adjustment ratios for each data year represent the observed relationship between final State occurrence and residence figures for the three most recent years for which final data were available and are expressed as a single ratio for each State. As in previous years, monthly State marriage and divorce figures represent the actual count of all events occurring in the State (State of occurrence) that were received in the registration offices during the 1-month period. Delay in the receipt of certificates in a registration office may result in a low State figure for a given month followed by a high figure for the month(s) in which the delayed records are received. Data for previous months and cumulative data include revised figures received from the States.

Figures for births, deaths, and infant deaths for California in [tables 2](#) and [4](#) contain adjustments for varying lengths of State reporting periods. Figures for Texas for all events shown in [tables 2–4](#) also are adjusted for varying lengths of State reporting periods. The figures for both States are adjusted by the ratio between the number of days in the data month and the number of days in the State reporting period. The adjusted figures are included in the U.S. totals shown elsewhere in this report.

U.S. totals for births, deaths, and infant deaths are based on the State estimates by State of residence and, therefore, in effect, exclude events to nonresidents of the United States. Events to nonresidents of the United States are included in all

marriage and divorce figures. The effect of excluding events to nonresidents from the U.S. totals is small.

Provisional totals for the United States include estimates for State data shown as not available. Provisional totals for births and marriages for the entire United States include adjustments for observed differences between provisional and final monthly figures.

Divorce figures include reported annulments. The monthly national divorce estimate is obtained by multiplying the total for the reporting areas by the ratio observed between the most recent final annual divorce total for the United States and the provisional total for the reporting areas combined.

Random variation—Although the counts in this report are not subject to sampling variability (except the Current Mortality Sample), they may be affected by random variation. When the number of events is small and the probability of such an event is small, considerable caution must be observed in interpreting the data. Such infrequent events may be assumed to follow a Poisson probability distribution. For this distribution a simple approximation may be used to estimate the random variation as follows:

If N is the number of events in the population and R is the corresponding rate, the chances are 19 in 20 that

$$1. N - 2\sqrt{N} \text{ and } N + 2\sqrt{N}$$

covers the “true” number of events.

$$2. R - 2 \frac{R}{\sqrt{N}} \text{ and } R + 2 \frac{R}{\sqrt{N}}$$

covers the “true” rate.

If the rate R_1 corresponding to N_1 events is compared with the rate R_2 corresponding to N_2 events, the difference between the two rates may be regarded as statistically significant at the 0.05 level if it exceeds

$$2 \sqrt{\frac{R_1^2}{N_1} + \frac{R_2^2}{N_2}}$$

Additional information on random variation in numbers of events, rates, and ratios may be found in the technical appendixes of *Vital Statistics of the United States, 1990, Volumes I and II*.

Rates

Rates are on an annual basis and, except for infant mortality rates, are per 1,000 or 100,000 estimated population residing in the United States. The populations used for computing these rates are furnished by the U.S. Bureau of the Census. Rates shown in this report beginning with 1992 were computed using populations based on the 1990 Census enumeration comparable to those used for final data. Monthly rates are based on populations estimated for the specific month. Year-to-date rates are averages of monthly rates that have been weighted by the number of days in the corresponding months. Rates for 12-month periods are the sum of events for the period per population estimated at the midpoint of the period.

Infant mortality rates are deaths under 1 year of age for the specified period (monthly, year-to-date, or 12-month period) per 1,000 or 100,000 live births. Births used for computing monthly and year-to-date infant mortality rates are adjusted for monthly variation in the number of births. Births used to compute 12-month rates do not contain this adjustment. Births used for computing infant mortality rates are not corrected for observed differences between provisional and final monthly figures as described earlier in “Nature and sources of data.” Because monthly infant mortality rates are based on relatively few events, they are highly variable. Therefore, comparisons of monthly infant mortality rates should be interpreted cautiously; see “[Random variation](#).”

Age-adjusted death rates are used to compare relative mortality risks across groups and over time. However, they should be viewed as constructs or indexes rather than as direct or actual measures of mortality risk. Statistically, they are weighted averages of the age-specific death rates, where the weights represent the fixed population proportions by age. See chapter 5 of an earlier report (1). The age-adjusted death rates presented in this report were computed by the direct method, that is, by applying age-specific death rates to the U.S. standard million population (2). See also chapter 10 of an earlier report (1). Age groups in [table 5](#) were used to compute the age-adjusted

rates shown in that table. It is important not to compare age-adjusted rates with crude rates.

Current Mortality Sample

The Current Mortality Sample (CMS) is a 10-percent systematic sample of death certificates drawn each month after the certificates are counted in the State registration offices. Deaths and death rates for the United States by age, race, sex, and cause are estimated based on the sample. Because of the additional time required to select and process the certificates, data based on the CMS are published 1 month after publication of the U.S. and State counts. Complete information concerning the underlying cause of death sometimes is not available when the sample is drawn. As a result estimates based on sample counts for certain causes are biased. Correction for bias is not made in this report.

Estimated numbers of deaths based on the sample were proportionately adjusted to be consistent with estimates based on the count of death certificates received in State registration offices.

HIV infection—Beginning with data for 1987, the National Center for Health Statistics introduced categories *042–*044 for classifying and coding Human immunodeficiency virus (HIV) infection. The asterisks before the categories indicate that these codes are not part of the

Ninth Revision, International Classification of Diseases. Deaths classified to these categories are included in All other infectious and parasitic diseases in the List of 72 Selected Causes of Death and are also shown separately at the bottom of table 6.

Sampling variability—Because the estimates of deaths and death rates presented in this report with the exception of total deaths and deaths under 1 year are based on a sample of death certificates, they are subject to sampling variability. The estimated relative standard error in the following table is a measure of the

Relative standard errors for estimated numbers of deaths from the Current Mortality Sample expressed as a percent of the estimate

Estimated number of deaths	Relative standard error of estimate (as percent)	
	170,000 estimated deaths each month	2,000,000 estimated deaths each year
10	94.9	94.9
20	67.1	67.1
50	42.4	42.4
100	30.0	30.0
200	21.2	21.2
500	13.4	13.4
1,000	9.5	9.5
2,000	6.7	6.7
5,000	4.2	4.2
10,000	2.9	3.0
20,000	2.0	2.1
50,000	1.1	1.3
100,000	0.6	0.9
200,000	0.6
500,000	0.4
1,000,000	0.2

sampling error of the estimated number of deaths (or of the estimated death rate) expressed as a percent of the estimate. The first column refers to monthly estimates; the second to annual; cumulative year-to-date totals fall between the two.

The chances are about 2 in 3 that the percent difference between an estimate and the result of a complete count is less than the percent shown. The chances are about 19 in 20 that the percent difference is less than twice the percent shown. A figure based on 100 or fewer estimated deaths has a relative standard error of 30 percent or more and is, therefore, considered unreliable. A rate based on 100 or fewer estimated deaths has been replaced by an asterisk.

Unless otherwise specified comparisons made in the text between death rates based on the CMS were statistically significant at the 0.05 level of significance. Lack of comment in the text about any two rates does not mean that the difference was tested and found not to be significant at this level.

References

1. Feinleib M, Zarate AO, eds. Reconsidering age adjustment procedures: Workshop proceedings. National Center for Health Statistics. Vital Health Stat 4(29). 1992.
2. Grove RD, Hetzel AM. Vital statistics rates in the United States, 1940–1960. Public Health Service. Washington: National Center for Health Statistics. 1968.

Suggested citation

National Center for Health Statistics. Births, marriages, divorces, and deaths for August 1996. Monthly vital statistics report; vol 45 no 8. Hyattsville, Maryland: National Center for Health Statistics. 1997.

Copyright information

All material appearing in this report is in the public domain and may be reproduced or copied without permission; citation as to source, however, is appreciated.

National Center for Health Statistics

Director
Edward J. Sondik, Ph.D.

Deputy Director
Jack R. Anderson

Division of Vital Statistics

Director
Mary Anne Freedman

**DEPARTMENT OF
HEALTH & HUMAN SERVICES**

Centers for Disease Control and Prevention
National Center for Health Statistics
6525 Belcrest Road
Hyattsville, Maryland 20782

FIRST CLASS MAIL
POSTAGE & FEES PAID
PHS/NCHS
PERMIT NO. G-281

**OFFICIAL BUSINESS
PENALTY FOR PRIVATE USE, \$300**

To receive this publication regularly, contact the National Center for Health Statistics by calling 301-436-8500
E-mail: nchsquery@nch10a.em.cdc.gov
Internet: <http://www.cdc.gov/nchswww/nchshome.htm>

DHHS Publication No. (PHS) 97-1120
7-0291 (3/97)