

# Monthly Vital Statistics Report



Provisional Data From the CENTERS FOR DISEASE CONTROL AND PREVENTION/National Center for Health Statistics

## Births, Marriages, Divorces, and Deaths for June 1996

### Births

According to provisional reports, an estimated 303,000 births occurred in the United States during June 1996. This was a 5-percent decrease from the provisional number of births reported for June 1995 (318,000). The birth rate, 14.0 live births per 1,000 population, was 5 percent lower than the rate of 14.8 for June 1995. The fertility rate, 62.1 live births per 1,000 women 15–44 years, was 5 percent lower than the comparable rate for June 1995 (65.2). The seasonally adjusted fertility rate (60.8) was also 5 percent lower than the comparable rate for June 1995 (63.8).

During the first half of 1996, an estimated 1,912,000 births occurred, a

1-percent decrease from the 1,928,000 reported for the first half of 1995. The birth rate for this period decreased by 2 percent, from 14.8 in 1995 to 14.5 in 1996. The fertility rate for the first half of 1996 was 64.6, 1 percent lower than the rate for the first half of 1995 (65.4).

An estimated 3,877,000 live births occurred in the 12-month period ending with June 1996, a decline of 2 percent from the 3,960,000 births reported for the same period a year earlier. The birth rate of 14.7 was 3 percent lower than the rate of 15.1 for the preceding 12-month period. The fertility rate for the most recent 12-month period was 65.1, 2 percent lower than the rate for the 12 months ending with June 1995 (66.7). These lower rates

continue the generally downward trend observed since early 1991.

### Natural increase

As a result of natural increase, the excess of births over deaths, an estimated 124,000 people, or 5.8 persons per 1,000 population, were added to the population during June 1996.

For the 12-month period ending with June 1996, 1,562,000 persons were added to the population. This represented a rate of natural increase of 5.9, 6 percent lower than the rate of 6.3 for the preceding 12-month period. The decline in the rate of natural increase was due to a decrease in the birth rate and a constant death rate.

### Provisional Vital Statistics for the United States

[Rates for infant deaths are deaths under 1 year per 1,000 live births; fertility rates are live births per 1,000 women aged 15–44 years; all other rates are per 1,000 total population. Data are subject to monthly reporting variation; see [Technical notes](#)]

Item	June				January–June				12 months ending with June				
	Number		Rate		Number		Rate		Number		Rate		
	1996	1995	1996	1995	1996	1995	1996	1995	1996	1995	1996	1995	1994
Live births . . . . .	303,000	318,000	14.0	14.8	1,912,000	1,928,000	14.5	14.8	3,877,000	3,960,000	14.7	15.1	15.5
Fertility rate . . . . .	...	...	62.1	65.2	...	...	64.6	65.4	...	...	65.1	66.7	67.7
Deaths . . . . .	179,000	180,000	8.2	8.3	1,191,000	1,185,000	9.1	9.1	2,315,000	2,299,000	8.8	8.8	8.8
Infant deaths . . . . .	2,300	2,400	7.6	7.5	14,200	15,000	7.4	7.7	28,600	30,500	7.4	7.7	8.0
Natural increase . . . . .	124,000	138,000	5.8	6.5	721,000	743,000	5.4	5.7	1,562,000	1,661,000	5.9	6.3	6.7
Marriages . . . . .	233,000	263,000	10.7	12.2	1,045,000	1,071,000	8.1	8.4	2,310,000	2,355,000	8.7	9.0	9.1
Divorces . . . . .	104,000	104,000	4.8	4.8	577,000	588,000	4.4	4.5	1,157,000	1,184,000	4.4	4.5	4.6
Population base (in millions) . . . . .	...	...	265.0	262.6	...	...	...	...	...	...	264.0	261.6	259.4

... Category not applicable.

NOTES: Figures include revisions received from the States. Twelve-month figures for the current year reflect revisions received for previous months, and figures for earlier years may differ from those previously published.



U.S. DEPARTMENT OF HEALTH AND HUMAN SERVICES  
Public Health Service  
Centers for Disease Control and Prevention  
National Center for Health Statistics



### Marriages

There were an estimated 233,000 marriages performed during June 1996, 11 percent fewer than in June 1995 (263,000). The marriage rate per 1,000 population for June was 12 percent lower in 1996 (10.7) than in 1995 (12.2). June typically has the highest marriage rate of any month.

The number of marriages for the first half of 1996 was 1,045,000, 2 percent lower than the number for the same period in 1995 (1,071,000). The marriage rate for January–June dropped 4 percent, from 8.4 in 1995 to 8.1 in 1996.

The number of marriages performed during the 12 months ending with June 1996 (2,310,000) was 2 percent lower than the number for the same period a year earlier (2,355,000). The marriage rate for the current 12-month period (8.7) was 3 percent lower than that for the comparable period ending with June 1995 (9.0).

Discrepancies in the marriage figures between the current and previous periods may be due to incomplete or delayed reporting in the current period.

### Divorces

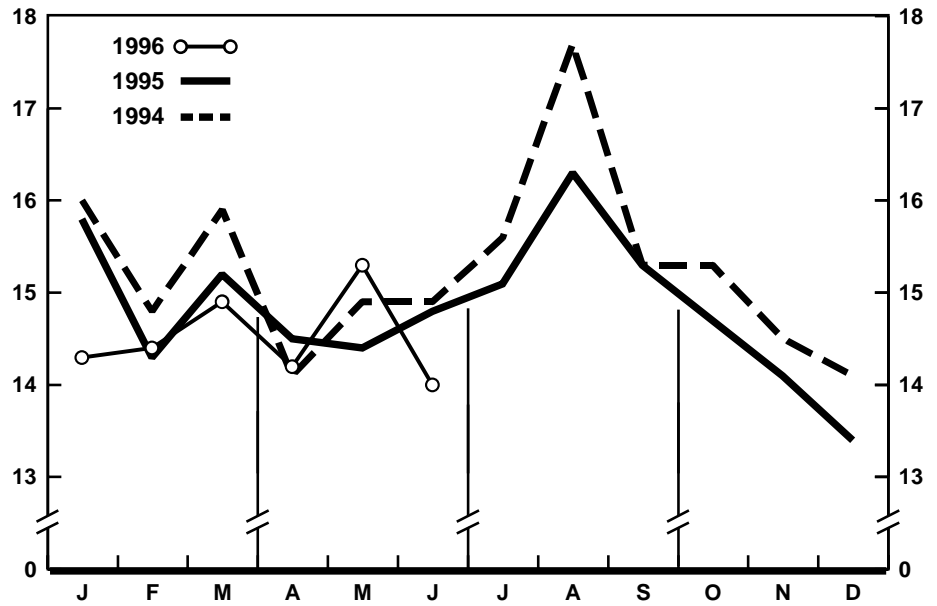
Approximately 104,000 divorces were granted during June 1996, the same number as reported for June 1995. The divorce rate per 1,000 population for June was also the same for both years (4.8).

Although the number and rate of divorces for June were the same in 1996 as in 1995, the cumulative number of divorces and the divorce rate for the first half of 1996 were 2 percent lower than the cumulative number and rate for the same period in 1995. The number of divorces for the 6-month period declined from 588,000 in 1995 to 577,000 in 1996, while the divorce rate declined from 4.5 to 4.4.

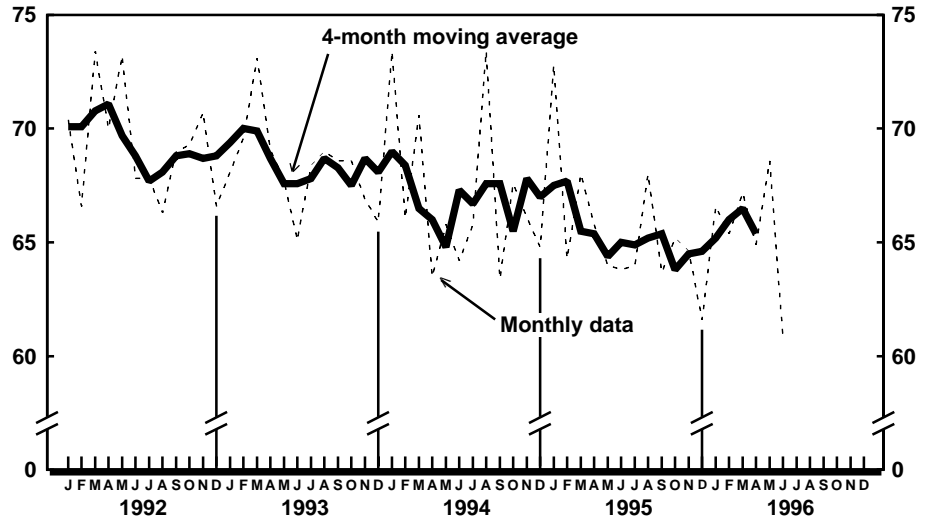
An estimated 1,157,000 divorces were granted during the 12-month period ending with June 1996, 2 percent fewer than for the same period a year earlier (1,184,000). The divorce rate also was 2 percent lower for the period ending with June 1996 (4.4) than for the period ending with June 1995 (4.5).

### Deaths

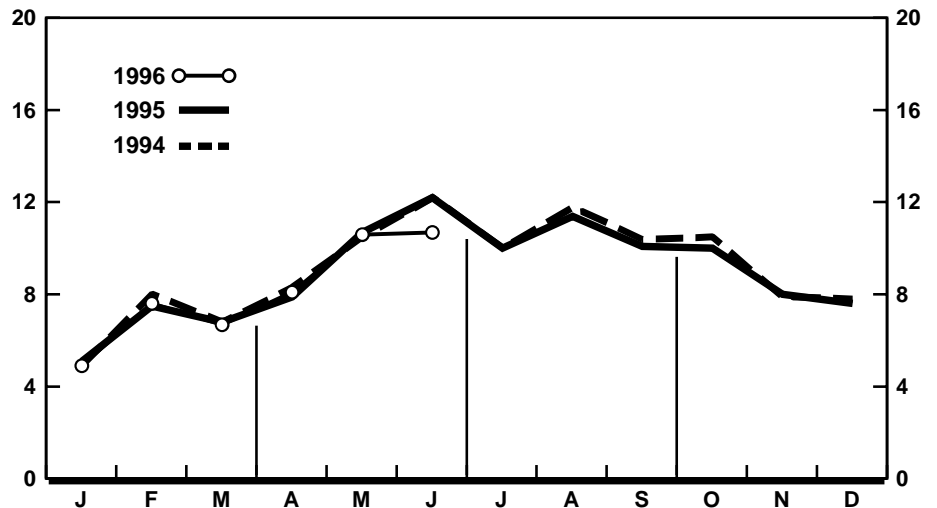
For June 1996 there were an estimated 179,000 deaths in the United



Provisional birth rates per 1,000 population by month: United States, 1994–96



Provisional seasonally adjusted fertility rates per 1,000 women aged 15–44 years: United States, 1992–96



Provisional marriage rates per 1,000 population by month: United States, 1994–96

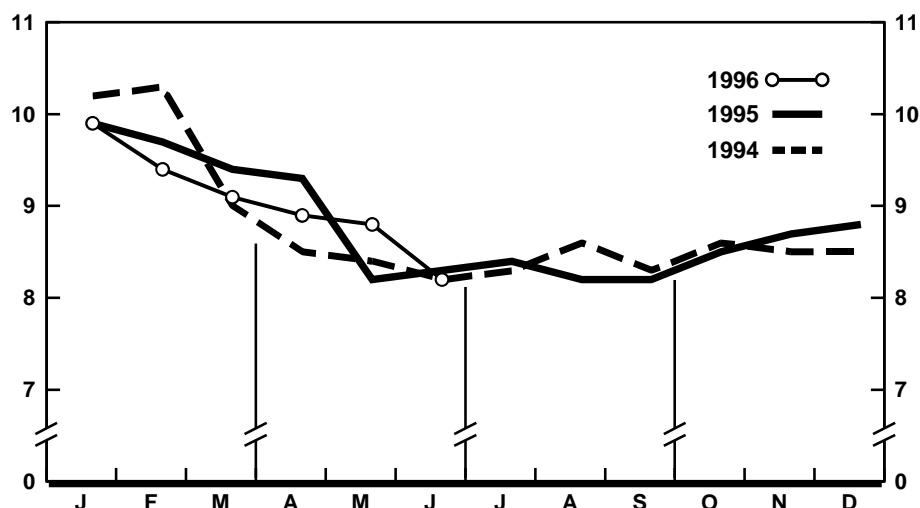
States. The death rate was 8.2 deaths per 1,000 population, 1 percent lower than the rate of 8.3 for June a year earlier. Among the 179,000 deaths for June 1996 were 2,300 deaths at ages under 1 year.

According to provisional statistics, there were 1,191,000 deaths during the first half of 1996, 1 percent higher than the number estimated for the first half of 1995 (1,185,000). The death rate, 9.1 per 1,000 population, was the same as the rate for January–June 1995. Among the 1,191,000 deaths reported for the first half of 1996 were 14,200 deaths at ages under 1 year, yielding an infant mortality rate of 7.4 per 1,000 live births. This rate was 4 percent lower than the rate of 7.7 for the first half of 1995.

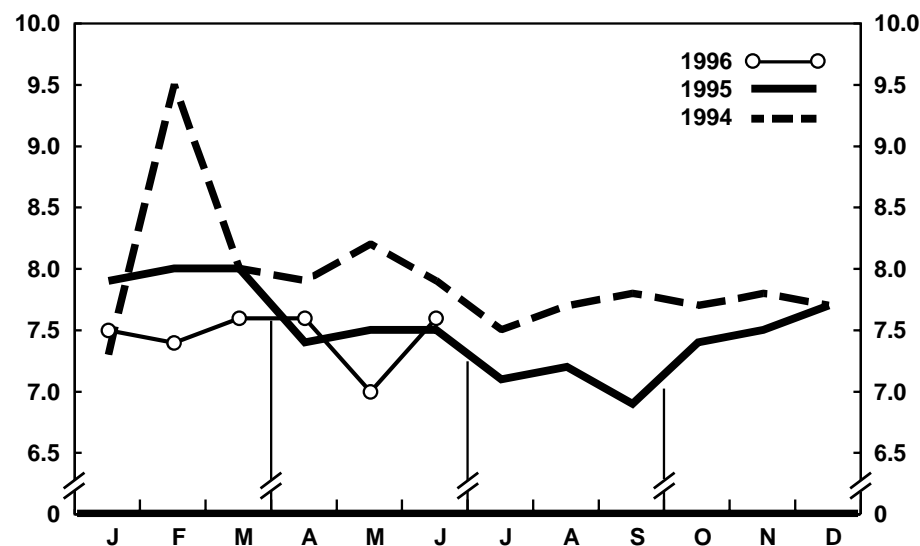
The death rate for the 12 months ending with June 1996 was 8.8 deaths per 1,000 population, the same as the rate for the comparable 12-month period a year earlier. The infant mortality rate for this 12-month period was 7.4 per 1,000 live births, 4 percent lower than the rate of 7.7 for the 12 months ending with June 1995.

*Current Mortality Sample, 12 months ending with May 1996*—The provisional death rate for the 12 months ending with May 1996 was 877.9 per 100,000 population, virtually the same as the rate for the 12-month period ending May 1995 (877.8). The provisional age-adjusted death rate for the 12-month period ending with May 1996 was 499.8 per 100,000 U.S. standard million population, 1.5 percent lower than the rate of 507.2 for the 12-month period ending with May 1995. Age-adjusted death rates control for changes and variations in the age composition of the population; therefore, they are better indicators than crude rates for showing changes in mortality risk over time and for showing differences between race-sex groups within the population. Among the race-sex groups, the estimated age-adjusted death rates decreased for white males and black females. By age the death rate for the total population decreased for the age groups under 1 year and 65–74 years of age.

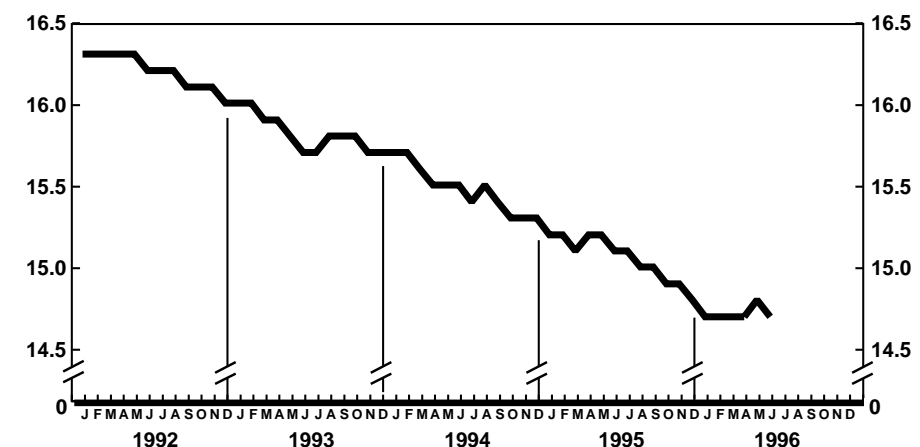
Among the major causes of death, the estimated death rate decreased between the two successive 12-month periods for Chronic liver disease and cirrhosis and Malignant neoplasms of genital organs. The death rate increased between the two



Provisional death rates per 1,000 population by month: United States, 1994–96



Provisional infant mortality rates per 1,000 live births by month: United States, 1994–96

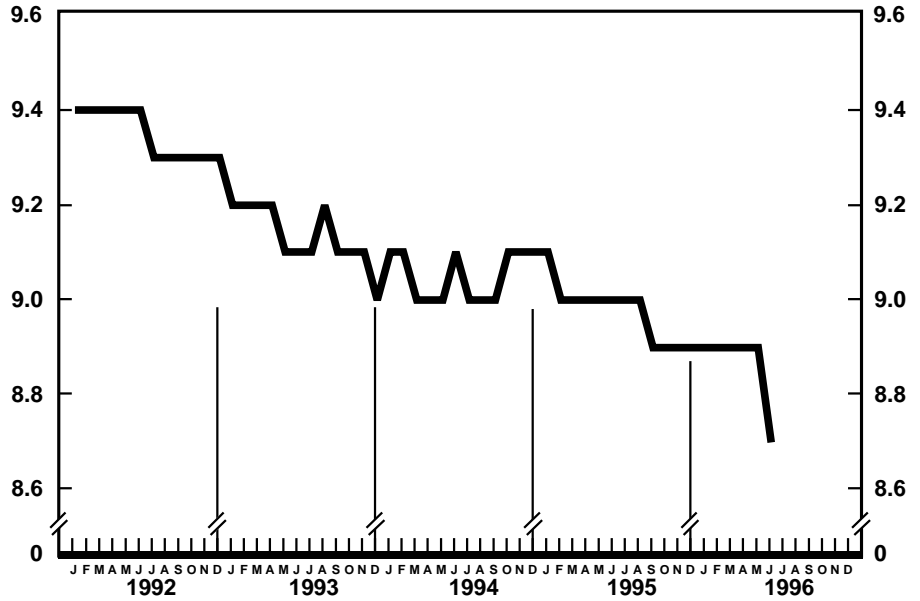


Provisional birth rates per 1,000 population for successive 12-month periods ending with month indicated: United States, 1992–96

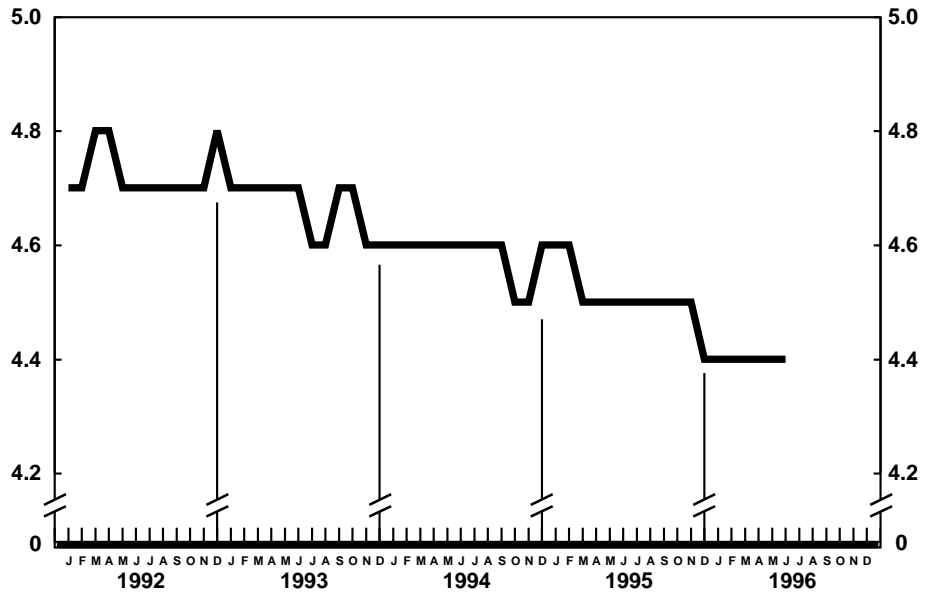
successive 12-month periods for Alzheimer's disease. The increase for Alzheimer's disease may reflect changes in diagnostic practices rather than real increases in mortality from this cause.

The death rate for injury by firearms for the 12 months ending with May 1996 was 13.4 per 100,000 population, 7.6 percent lower than the rate of 14.5 for the comparable 12-month period a year earlier.

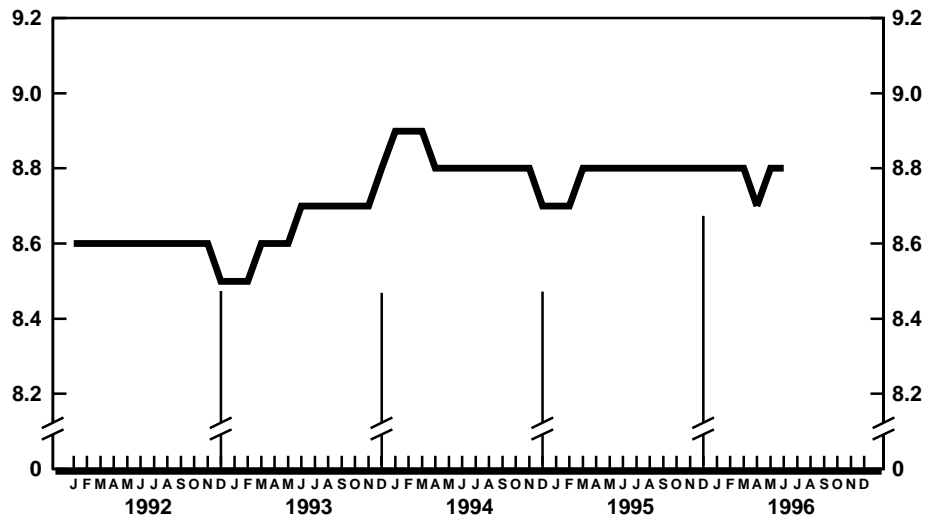
The infant mortality rate for the 12 months ending with May 1996 was 738.4 per 100,000 live births, 4.9 percent lower than the rate of 776.1 for the same 12-month period a year earlier. For infants under 28 days of age, the 12-month rate ending May 1996 was 475.3 compared with a rate of 494.5 for the 12-month period a year earlier. The infant mortality rate for infants aged 28 days–11 months was 262.8 compared with a rate of 281.2 for the 12-month period a year earlier. The changes in the mortality rates for infants under 28 days of age and for those aged 28 days–11 months were not statistically significant. Among causes of infant death, the infant mortality rate decreased between the two successive 12-month periods for Sudden infant death syndrome.



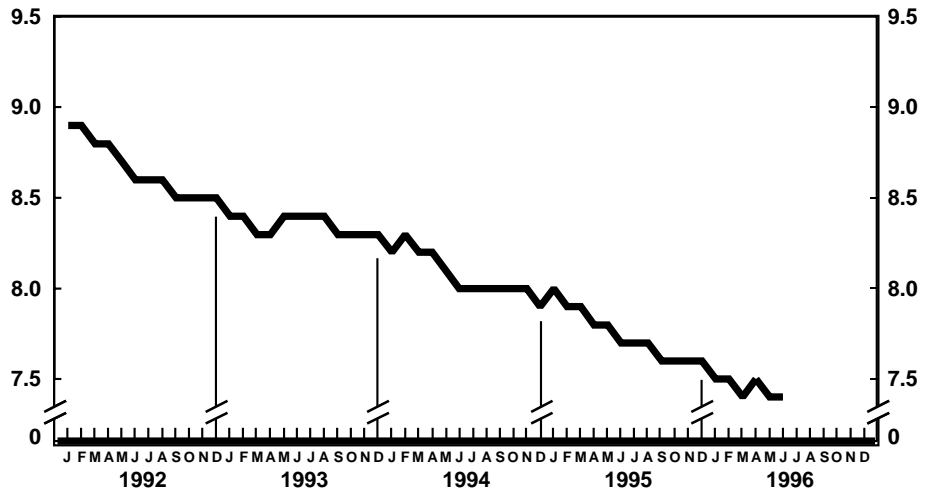
Provisional marriage rates per 1,000 population for successive 12-month periods ending with month indicated: United States, 1992–96



Provisional divorce rates per 1,000 population for successive 12-month periods ending with month indicated: United States, 1992–96



Provisional death rates per 1,000 population for successive 12-month periods ending with month indicated: United States, 1992-96



Provisional infant mortality rates per 1,000 live births for successive 12-month periods ending with month indicated: United States, 1992-96

**Table 1. Provisional number of live births, marriages, divorces, deaths, and infant deaths and rates, by month: United States, January 1995–June 1996**[Data are provisional and are subject to monthly reporting variation; see [Technical notes](#)]

Period	Live births				Marriages		Divorces		Deaths		Infant deaths	
	Number	Rate per 1,000 women aged 15–44 years			Rate per 1,000 population		Rate per 1,000 population		Rate per 1,000 population		Rate per 1,000 live births	
		Unadjusted	Seasonally adjusted <sup>1</sup>		Number	Rate per 1,000	Number	Rate per 1,000	Number	Rate per 1,000	Number	Rate per 1,000
<b>1995:</b>												
January . . . . .	350,000	15.8	69.4	72.8	111,000	5.1	96,000	4.3	220,000	9.9	2,700	7.9
February . . . . .	287,000	14.3	63.1	64.3	146,000	7.5	89,000	4.4	194,000	9.7	2,400	8.0
March . . . . .	338,000	15.2	67.1	68.0	148,000	6.8	98,000	4.4	208,000	9.4	2,700	8.0
April . . . . .	313,000	14.5	64.1	65.8	165,000	7.9	98,000	4.6	200,000	9.3	2,300	7.4
May . . . . .	321,000	14.4	63.5	64.0	238,000	10.7	103,000	4.6	184,000	8.2	2,500	7.5
June . . . . .	318,000	14.8	65.2	63.8	263,000	12.2	104,000	4.8	180,000	8.3	2,400	7.5
July . . . . .	337,000	15.1	66.6	64.0	224,000	10.0	97,000	4.4	188,000	8.4	2,400	7.1
August . . . . .	364,000	16.3	72.1	68.0	254,000	11.4	99,000	4.4	184,000	8.2	2,400	7.2
September . . . . .	331,000	15.3	67.6	63.7	219,000	10.1	99,000	4.6	178,000	8.2	2,200	6.9
October . . . . .	328,000	14.7	64.9	65.2	224,000	10.0	98,000	4.4	190,000	8.5	2,500	7.4
November . . . . .	306,000	14.1	62.6	64.6	174,000	8.0	95,000	4.4	188,000	8.7	2,300	7.5
December . . . . .	300,000	13.4	59.3	61.6	169,000	7.6	92,000	4.1	197,000	8.8	2,400	7.7
<b>1996:</b>												
January . . . . .	320,000	14.3	63.5	66.6	106,000	4.9	96,000	4.3	221,000	9.9	2,400	7.5
February . . . . .	302,000	14.4	64.1	65.4	153,000	7.6	85,000	4.1	197,000	9.4	2,300	7.4
March . . . . .	334,000	14.9	66.3	67.2	146,000	6.7	93,000	4.2	204,000	9.1	2,500	7.6
April . . . . .	309,000	14.2	63.3	64.9	170,000	8.1	95,000	4.4	193,000	8.9	2,400	7.6
May . . . . .	344,000	15.3	68.1	68.6	238,000	10.6	103,000	4.6	197,000	8.8	2,400	7.0
June . . . . .	303,000	14.0	62.1	60.8	233,000	10.7	104,000	4.8	179,000	8.2	2,300	7.6

<sup>1</sup>The method of seasonal adjustment, developed by the U.S. Bureau of the Census, is described in *The X-11 Variant of the Census Method II Seasonal Adjustment Program*, Technical Paper No. 15 (1967 revision).

NOTE: Figures include all revisions received from the States and, therefore, may differ from those previously published.

**Table 2. Provisional number of live births and deaths: Each division and State, June 1995 and 1996, and cumulative figures, 1994–96**

[Data are estimates by State of residence; see [Technical notes](#)]

Area	Live births					Deaths				
	June		January–June			June		January–June		
	1996	1995	1996	1995	1994	1996	1995	1996	1995	1994
New England	16,708	15,622	97,836	90,784	87,533	9,443	10,241	57,821	60,860	58,565
Maine	1,181	1,313	6,741	6,834	7,101	701	1,004	5,427	5,722	5,417
New Hampshire	1,362	1,510	6,734	7,097	7,086	703	709	4,576	4,749	4,503
Vermont	545	664	3,375	3,407	3,425	466	430	2,640	2,739	2,392
Massachusetts	9,198	7,562	56,099	42,222	42,658	4,787	4,706	26,999	28,718	27,073
Rhode Island	1,000	1,027	6,096	5,964	6,384	695	694	4,725	4,863	4,718
Connecticut	3,422	3,546	18,791	25,260	20,879	2,091	2,698	13,454	14,069	14,462
Middle Atlantic	42,377	43,631	256,556	252,933	271,271	27,036	28,935	186,640	192,517	189,390
New York	20,116	23,115	131,258	129,199	139,677	11,954	13,323	84,680	87,876	86,365
New Jersey	10,362	7,265	51,307	47,321	53,389	5,667	5,671	36,736	38,959	37,208
Pennsylvania	11,899	13,251	73,991	76,413	78,205	9,415	9,941	65,224	65,682	65,817
East North Central	50,026	52,351	301,137	303,253	319,128	31,025	30,637	197,562	198,933	203,813
Ohio	12,662	13,180	71,627	74,367	82,269	8,765	7,225	53,817	52,986	55,745
Indiana	5,902	6,904	36,592	36,791	39,889	4,578	4,231	24,666	25,942	26,986
Illinois	14,914	15,543	89,116	91,132	92,327	8,154	8,305	53,354	54,713	55,061
Michigan	11,430	10,808	70,760	67,152	69,460	6,197	7,226	42,548	42,495	42,636
Wisconsin	5,118	5,916	33,042	33,811	35,183	3,331	3,650	23,177	22,797	23,385
West North Central	20,214	22,452	123,810	124,876	124,265	14,025	13,243	89,517	86,566	87,289
Minnesota	5,080	5,202	31,380	31,104	32,277	2,872	2,960	18,638	18,769	18,383
Iowa	2,495	3,560	15,844	16,077	17,388	2,118	2,197	16,526	13,247	13,371
Missouri	7,281	6,066	37,718	36,674	36,677	5,009	3,974	28,120	28,167	29,105
North Dakota	734	746	4,102	4,407	4,235	447	464	2,947	3,089	2,986
South Dakota	722	793	4,640	5,460	5,345	524	533	3,102	3,535	3,498
Nebraska	2,121	1,902	11,572	11,484	10,954	1,358	1,164	7,768	7,665	7,434
Kansas	1,781	4,183	18,554	19,670	17,389	1,697	1,951	12,416	12,094	12,512
South Atlantic	52,686	51,140	316,727	324,689	321,445	33,458	33,419	230,139	226,158	221,982
Delaware	711	843	4,967	4,953	5,189	499	500	3,276	3,173	3,162
Maryland	4,827	6,442	33,753	36,509	32,894	3,064	3,570	21,140	20,883	19,475
District of Columbia	653	775	4,030	4,520	4,882	468	492	3,068	3,301	3,459
Virginia	8,001	5,259	42,056	46,144	46,093	4,032	3,876	26,534	27,243	27,931
West Virginia	1,657	2,033	9,450	10,965	11,454	1,561	1,608	9,665	10,361	10,795
North Carolina	8,299	8,212	50,892	50,780	47,579	5,266	5,022	34,727	33,243	33,477
South Carolina	3,866	3,841	25,040	24,611	26,119	2,446	2,399	17,746	16,603	15,864
Georgia	8,694	9,241	56,491	57,513	53,709	4,203	4,535	31,351	30,414	30,054
Florida	15,978	14,494	90,048	88,694	93,526	11,919	11,417	82,632	80,937	77,765
East South Central	17,975	17,268	108,761	109,430	111,753	11,921	11,840	81,449	81,712	80,797
Kentucky	3,866	4,354	25,513	24,697	25,333	2,741	2,854	19,495	20,426	19,900
Tennessee	6,119	5,475	34,201	35,392	36,251	4,112	3,833	25,732	26,060	24,496
Alabama	5,247	4,536	30,037	29,854	29,849	3,045	3,008	22,368	21,595	22,415
Mississippi	2,743	2,903	19,010	19,487	20,320	2,023	2,145	13,854	13,631	13,986
West South Central	33,053	38,077	232,358	242,847	233,854	17,012	18,538	126,076	122,399	126,684
Arkansas	2,850	2,590	16,834	16,118	16,612	2,011	1,913	13,038	12,673	14,103
Louisiana	4,361	4,319	32,203	32,944	33,696	2,909	3,275	21,618	20,362	22,192
Oklahoma	3,102	3,292	22,181	22,645	23,091	2,448	2,480	17,148	16,666	16,865
Texas <sup>1</sup>	22,740	27,876	161,140	171,140	160,455	9,644	10,870	74,272	72,698	73,524
Mountain	20,093	20,891	125,103	123,501	122,410	10,413	9,561	62,920	58,827	56,123
Montana	873	999	5,365	5,534	5,417	630	594	3,884	3,855	3,710
Idaho	1,417	1,646	9,269	8,616	8,650	655	733	4,242	4,250	4,259
Wyoming	543	579	3,012	3,268	3,163	292	266	1,726	1,869	1,731
Colorado	3,825	4,011	24,187	25,879	27,340	2,144	2,224	13,189	12,943	12,303
New Mexico	1,974	2,224	12,902	13,186	13,704	1,005	995	6,767	6,320	6,243
Arizona	6,307	6,164	40,985	38,080	33,453	3,867	2,961	20,690	17,752	16,481
Utah	2,621	3,132	18,752	19,016	19,526	771	818	5,601	5,445	5,409
Nevada	2,533	2,136	10,631	9,922	11,157	1,049	970	6,821	6,393	5,987
Pacific	49,786	56,422	345,991	350,302	350,228	24,475	23,524	159,137	154,973	147,944
Washington	5,047	6,700	39,100	37,531	38,076	2,981	3,150	19,916	19,303	19,423
Oregon	3,469	4,000	22,819	22,503	21,420	1,982	2,230	14,419	14,385	14,179
California <sup>1</sup>	38,954	43,440	269,925	276,150	274,154	18,608	17,347	119,560	116,368	109,541
Alaska	768	803	4,971	5,321	7,008	250	209	1,188	1,066	1,153
Hawaii	1,548	1,479	9,176	8,797	9,570	654	588	4,054	3,851	3,648
Puerto Rico <sup>2</sup>	4,759	---	24,206	---	---	1,984	---	11,183	---	---

--- Data not available.

<sup>1</sup>Figures include adjustments for varying lengths of reporting periods; see [Technical notes](#).

<sup>2</sup>Data for Puerto Rico are not included in U.S. total figures.

NOTES: Figures include all revisions received from the States. Cumulative figures for the current year reflect revisions received for previous months, and figures for earlier years may differ from those previously published.

**Table 3. Provisional number of marriages and divorces: Each division and State, June 1995 and 1996, and cumulative figures, 1994–96**

[By State of occurrence. Number of events reported; see [Technical notes](#). Divorces include reported annulments]

Area	Marriages					Divorces				
	June		January–June			June		January–June		
	1996	1995	1996	1995	1994	1996	1995	1996	1995	1994
New England	10,999	12,750	35,928	38,038	42,869	3,380	3,597	17,207	19,761	18,538
Maine	1,116	1,237	3,030	3,831	3,808	224	403	1,860	2,347	2,468
New Hampshire	917	919	3,186	3,085	3,799	498	454	2,462	2,473	2,368
Vermont	493	547	1,866	1,991	1,717	121	254	1,328	1,604	1,409
Massachusetts	4,803	6,001	16,340	17,803	21,640	1,502	1,310	4,868	6,693	5,761
Rhode Island	1,063	809	3,222	2,722	2,807	240	397	1,615	1,870	1,659
Connecticut	2,607	3,237	8,284	8,606	9,098	795	779	5,074	4,774	4,873
Middle Atlantic	21,875	30,543	104,615	115,083	110,088	11,949	10,269	61,484	59,809	59,590
New York <sup>1</sup>	8,200	14,772	54,538	61,037	56,447	5,277	3,806	29,259	26,825	27,690
New Jersey	5,506	5,472	21,191	21,363	21,638	2,735	2,928	13,450	13,147	12,608
Pennsylvania	8,169	10,299	28,886	32,683	32,003	3,937	3,535	18,775	19,837	19,292
East North Central	34,255	38,695	126,536	143,928	142,375	<sup>2</sup> 11,095	<sup>2</sup> 13,662	<sup>2</sup> 69,091	<sup>2</sup> 75,130	<sup>2</sup> 74,818
Ohio	9,954	9,578	34,082	39,018	38,198	2,871	4,978	21,156	24,934	24,815
Indiana	2,136	5,919	12,477	22,184	21,462	---	---	---	---	---
Illinois	9,859	10,043	37,648	38,822	39,630	4,086	4,040	19,862	20,873	20,889
Michigan	7,869	8,362	27,839	29,038	28,478	2,699	3,007	19,671	20,401	20,455
Wisconsin	4,437	4,793	14,490	14,866	14,607	1,439	1,637	8,402	8,922	8,659
West North Central	18,913	17,014	64,582	63,482	61,803	6,688	6,240	39,177	37,151	38,593
Minnesota	4,141	4,055	13,374	13,233	12,689	1,223	1,406	7,373	7,740	8,136
Iowa	3,146	2,614	9,124	9,168	8,891	987	793	6,433	5,412	5,861
Missouri	6,617	5,348	22,705	21,469	19,471	2,514	2,096	13,365	13,880	13,990
North Dakota	646	710	1,981	1,900	2,051	202	186	1,182	1,105	1,107
South Dakota	840	958	2,836	3,160	3,113	227	241	1,340	1,422	1,430
Nebraska	1,627	1,423	5,932	5,705	5,792	522	457	3,045	3,140	3,306
Kansas	1,896	1,906	8,630	8,847	9,796	1,013	1,061	6,439	4,452	4,763
South Atlantic	43,531	47,017	211,315	214,396	210,046	20,858	20,392	107,103	113,329	115,598
Delaware	652	622	2,405	2,362	2,217	292	335	1,707	1,936	1,710
Maryland	4,930	4,772	18,432	18,009	18,893	1,998	1,173	7,633	7,236	8,183
District of Columbia	234	244	884	820	687	83	169	527	705	1,198
Virginia	7,183	6,820	29,030	31,777	31,278	2,300	2,557	13,464	13,550	14,198
West Virginia	1,433	595	4,714	3,998	4,088	782	599	3,576	4,420	4,570
North Carolina	6,769	6,834	27,839	29,963	22,777	3,989	3,605	17,874	18,785	17,862
South Carolina	4,195	4,967	21,599	22,147	26,318	1,658	1,205	7,691	7,012	7,839
Georgia	6,115	6,428	29,580	29,675	29,425	3,250	3,744	17,607	18,700	18,145
Florida	12,020	15,735	76,832	75,645	74,363	6,506	7,005	37,024	40,985	41,893
East South Central	19,687	18,732	87,088	90,555	85,052	10,934	8,185	51,217	48,373	49,254
Kentucky	4,181	5,330	19,063	22,519	22,301	1,521	1,729	10,603	11,310	11,653
Tennessee	8,841	7,453	35,651	40,037	32,972	2,997	3,069	17,857	17,237	16,708
Alabama	4,382	3,717	22,023	18,093	19,197	2,513	2,167	13,274	12,985	13,206
Mississippi	2,283	2,232	10,351	9,906	10,582	3,903	1,220	9,483	6,841	7,687
West South Central	29,435	31,225	144,851	150,719	155,322	<sup>2</sup> 10,959	<sup>2</sup> 11,839	<sup>2</sup> 69,219	<sup>2</sup> 69,050	<sup>2</sup> 72,787
Arkansas	3,477	2,634	15,747	15,864	18,255	1,738	1,132	6,896	6,783	9,186
Louisiana	4,247	4,601	18,203	18,488	19,741	---	---	---	---	---
Oklahoma	2,936	3,578	13,726	14,250	14,523	1,619	1,960	10,196	10,978	10,857
Texas <sup>3</sup>	18,775	20,412	97,175	102,117	102,803	7,602	8,747	52,127	51,289	52,744
Mountain	<sup>2</sup> 12,074	27,726	<sup>2</sup> 59,508	131,944	128,917	<sup>2</sup> 4,901	<sup>2</sup> 6,882	<sup>2</sup> 30,221	<sup>2</sup> 36,542	<sup>2</sup> 34,939
Montana	796	916	2,658	2,708	2,724	406	409	2,192	1,995	2,074
Idaho	1,475	1,643	6,295	6,756	6,975	483	565	3,540	3,321	3,743
Wyoming	602	544	2,028	2,029	1,909	240	314	1,612	1,691	1,447
Colorado	2,150	4,228	9,876	15,435	15,487	---	---	---	---	---
New Mexico <sup>4,5</sup>	1,507	1,632	8,111	7,283	6,035	837	1,062	5,701	5,562	4,971
Arizona <sup>1</sup>	3,698	3,903	21,015	20,058	18,331	2,194	2,612	12,816	13,018	11,637
Utah	1,846	2,525	9,525	10,121	9,068	741	738	4,360	4,575	4,703
Nevada	---	12,335	---	67,554	68,388	---	1,182	---	6,380	6,364
Pacific	21,991	25,911	140,342	120,508	137,671	<sup>2</sup> 3,921	<sup>2</sup> 4,579	<sup>2</sup> 24,694	<sup>2</sup> 26,249	<sup>2</sup> 27,205
Washington	2,928	4,821	17,241	18,625	16,897	2,209	2,420	13,611	14,608	14,856
Oregon	2,091	3,194	9,816	11,711	10,761	1,081	1,417	7,351	7,645	8,344
California	14,500	15,593	101,283	78,836	98,771	---	---	---	---	---
Alaska	594	655	2,276	2,379	2,498	200	197	1,323	1,398	1,672
Hawaii	1,878	1,648	9,726	8,957	8,744	431	545	2,409	2,598	2,333
Puerto Rico <sup>6</sup>	2,493	---	6,994	---	---	---	---	---	---	---

--- Data not available.

<sup>1</sup>Figures for marriages are marriage licenses issued for some counties.

<sup>2</sup>Excludes figures for State(s) shown below as not available.

<sup>3</sup>Figures include adjustments for varying lengths of reporting periods; see [Technical notes](#).

<sup>4</sup>Figures for marriages are marriage licenses issued.

<sup>5</sup>Figures for divorces include estimates for some counties.

<sup>6</sup>Data for Puerto Rico are not included in U.S. total figures.

NOTES: Figures include all revisions received from the States. Cumulative figures for the current year reflect revisions received for previous months, and figures for earlier years may differ from those previously published.



**Table 4. Provisional number of deaths under 1 year and infant mortality rates: Each division and State, 12 months ending with June 1995 and 1996**

[Data are estimates by State of residence. Figures should be interpreted with caution because of conversion to place of residence; see [Technical notes](#). Infant mortality rates are deaths under 1 year per 1,000 live births in specified area]

Area	12 months ending with June			
	1996		1995	
	Number	Rate	Number	Rate
New England . . . . .	869	5.0	995	5.6
Maine . . . . .	72	5.2	86	6.1
New Hampshire . . . . .	65	4.4	90	6.2
Vermont . . . . .	54	8.0	43	6.0
Massachusetts . . . . .	375	4.3	457	5.5
Rhode Island . . . . .	84	6.5	78	6.0
Connecticut . . . . .	219	5.7	241	5.2
Middle Atlantic . . . . .	3,914	7.3	4,132	7.7
New York . . . . .	1,991	7.5	2,121	7.9
New Jersey . . . . .	787	6.6	815	7.3
Pennsylvania . . . . .	1,136	7.6	1,196	7.7
East North Central . . . . .	5,136	8.2	5,438	8.7
Ohio . . . . .	1,253	8.2	1,306	8.5
Indiana . . . . .	676	8.0	787	9.8
Illinois . . . . .	1,619	8.8	1,670	8.9
Michigan . . . . .	1,083	7.9	1,169	8.5
Wisconsin . . . . .	505	7.6	506	7.5
West North Central . . . . .	1,756	6.9	1,942	7.7
Minnesota . . . . .	375	5.9	425	6.7
Iowa . . . . .	213	5.9	272	7.9
Missouri . . . . .	556	7.3	613	8.1
North Dakota . . . . .	38	4.5	52	5.9
South Dakota . . . . .	70	7.2	121	11.3
Nebraska . . . . .	190	8.2	190	8.1
Kansas . . . . .	314	8.7	269	7.6
South Atlantic . . . . .	5,570	8.6	5,743	8.6
Delaware . . . . .	63	6.3	72	7.1
Maryland . . . . .	605	8.7	634	8.4
District of Columbia . . . . .	142	16.8	166	17.8
Virginia . . . . .	673	7.8	736	7.7
West Virginia . . . . .	157	8.1	153	7.3
North Carolina . . . . .	965	9.4	1,001	9.5
South Carolina . . . . .	429	8.5	449	9.1
Georgia . . . . .	1,080	9.6	1,051	9.3
Florida . . . . .	1,456	7.7	1,481	8.0
East South Central . . . . .	2,077	9.3	2,171	9.5
Kentucky . . . . .	406	7.8	387	7.5
Tennessee . . . . .	657	9.0	730	9.8
Alabama . . . . .	620	10.1	620	10.2
Mississippi . . . . .	394	10.7	434	10.2
West South Central . . . . .	3,487	7.4	3,611	7.5
Arkansas . . . . .	320	9.1	290	8.5
Louisiana . . . . .	580	8.7	642	9.5
Oklahoma . . . . .	411	9.0	392	8.7
Texas <sup>1</sup> . . . . .	2,176	6.7	2,287	6.9
Mountain . . . . .	1,718	7.1	1,719	7.0
Montana . . . . .	81	7.3	96	8.6
Idaho . . . . .	116	6.3	119	6.9
Wyoming . . . . .	51	8.4	60	9.2
Colorado . . . . .	347	7.2	366	6.9
New Mexico . . . . .	181	6.7	215	7.8
Arizona . . . . .	579	8.1	521	7.4
Utah . . . . .	219	5.7	220	5.7
Nevada . . . . .	144	6.5	122	6.0
Pacific . . . . .	4,115	5.8	4,647	6.3
Washington . . . . .	255	3.2	416	5.3
Oregon . . . . .	233	5.4	274	6.3
California <sup>1</sup> . . . . .	3,448	6.2	3,752	6.4
Alaska . . . . .	73	7.5	77	7.4
Hawaii . . . . .	106	5.6	128	6.9
Puerto Rico <sup>2</sup> . . . . .	---	---	---	---

--- Data not available.

<sup>1</sup>Figures include adjustments for varying lengths of reporting periods; see [Technical notes](#).

<sup>2</sup>Data for Puerto Rico are not included in U.S. total figures.

NOTES: Figures include all revisions received from the States. Figures for the current year reflect revisions received for previous months, and figures for earlier years may differ from those previously published.

**Table 5. Provisional number of deaths and death rates, by age, race, and sex, and age-adjusted death rates by race and sex: United States, May 1995 and 1996, cumulative figures 1995 and 1996, and 12 months ending with May 1995 and 1996**

[Data are provisional, estimated from a 10-percent sample of deaths. Age-specific rates on an annual basis per 100,000 population in specified group; age-adjusted rates per 100,000 U.S. standard million population; see [Technical notes](#). Because of rounding of estimates, figures may not add to totals. For method of computation and information on standard errors of the estimates, see [Technical notes](#)]

Age, race, and sex	May				January–May				12 months ending with May			
	1996		1995		1996		1995		1996		1995	
	Number	Rate	Number	Rate	Number	Rate	Number	Rate	Number	Rate	Number	Rate
<b>All races, both sexes<sup>1</sup></b>												
All ages . . . . .	197,000	877.6	184,000	824.2	1,012,000	922.2	1,005,000	927.4	2,316,000	877.9	2,295,000	877.8
Under 1 year. . . . .	} 3,630	73.9	3,610	73.7	11,900	<sup>2</sup> 744.5	12,600	<sup>2</sup> 791.2	28,600	<sup>2</sup> 743.6	30,600	<sup>2</sup> 796.2
1–4 years . . . . .					2,780	42.9	3,090	47.2	6,420	41.0	7,140	45.1
5–14 years . . . . .					3,480	21.8	3,300	20.9	8,410	22.0	8,670	22.9
15–24 years . . . . .	2,790	91.7	2,470	80.9	13,450	90.2	13,340	89.8	34,660	96.4	35,030	97.5
25–34 years . . . . .	4,660	135.9	4,580	131.8	22,740	135.0	24,360	143.6	56,650	139.5	59,370	144.3
35–44 years . . . . .	8,650	236.6	7,650	212.5	41,950	234.7	42,430	242.8	102,160	238.4	102,170	243.1
45–54 years . . . . .	12,150	446.5	11,610	442.5	60,390	454.8	60,620	477.2	142,930	450.7	139,960	460.1
55–64 years . . . . .	20,160	1,117.9	18,760	1,046.5	101,660	1,151.8	100,480	1,151.9	235,630	1,110.9	237,630	1,128.5
65–74 years . . . . .	40,780	2,575.0	39,090	2,454.8	208,180	2,677.7	211,130	2,722.2	476,000	2,538.1	482,470	2,574.1
75–84 years . . . . .	56,540	5,870.0	52,370	5,556.6	291,780	6,203.3	286,060	6,250.9	657,290	5,832.7	647,300	5,873.9
85 years and over. . . . .	47,350	15,056.2	43,480	14,189.1	253,690	16,523.7	247,230	16,636.0	564,710	15,345.4	543,710	15,208.7
Not stated . . . . .	80	...	90	...	450	...	480	...	990	...	890	...
Age-adjusted rate <sup>3</sup> . . . . .	...	499.5	...	473.5	...	517.7	...	526.9	...	499.8	...	507.2
<b>All races, male<sup>1</sup></b>												
All ages . . . . .	99,310	906.6	93,750	861.8	510,170	951.3	506,800	957.8	1,175,140	911.9	1,167,030	914.3
Under 1 year. . . . .	} 1,950	77.5	2,040	81.3	6,380	<sup>2</sup> 778.4	6,990	<sup>2</sup> 859.6	15,710	<sup>2</sup> 797.1	16,920	<sup>2</sup> 859.3
1–4 years . . . . .					1,540	46.1	1,840	55.2	3,550	44.3	4,200	51.8
5–14 years . . . . .					1,990	24.3	2,010	25.1	5,000	25.5	5,280	27.2
15–24 years . . . . .	1,990	128.2	1,910	122.6	10,080	132.7	10,210	134.7	26,310	143.4	26,830	146.3
25–34 years . . . . .	3,140	183.3	3,420	196.9	16,080	191.1	17,960	211.8	40,500	199.5	43,900	213.4
35–44 years . . . . .	5,710	314.8	5,300	296.9	28,560	321.9	29,520	340.6	69,930	329.0	70,970	340.5
45–54 years . . . . .	7,580	570.2	7,440	580.5	38,380	591.7	38,250	616.3	90,930	586.9	88,270	594.1
55–64 years . . . . .	12,070	1,406.8	11,410	1,339.7	61,000	1,452.4	60,010	1,448.2	141,460	1,402.3	143,550	1,435.1
65–74 years . . . . .	23,400	3,316.6	22,270	3,147.8	118,260	3,415.7	120,070	3,486.7	272,170	3,260.3	274,110	3,296.2
75–84 years . . . . .	27,680	7,337.3	25,780	7,060.7	143,980	7,827.7	139,590	7,884.8	323,530	7,358.0	315,170	7,405.3
85 years and over. . . . .	15,720	17,743.5	14,130	16,488.5	83,610	19,359.1	80,050	19,286.3	185,360	17,926.5	177,250	17,778.3
Not stated . . . . .	60	...	80	...	330	...	290	...	690	...	580	...
Age-adjusted rate <sup>3</sup> . . . . .	...	632.0	...	610.9	...	659.8	...	674.8	...	640.2	...	652.0
<b>All races, female<sup>1</sup></b>												
All ages . . . . .	97,500	850.0	89,940	788.7	502,290	894.3	498,270	898.3	1,139,320	844.1	1,127,920	842.9
Under 1 year. . . . .	} 1,680	70.1	1,580	66.1	5,530	<sup>2</sup> 707.6	5,560	<sup>2</sup> 716.9	12,900	<sup>2</sup> 686.5	13,690	<sup>2</sup> 729.0
1–4 years . . . . .					1,240	39.2	1,260	39.4	2,870	37.6	2,940	38.0
5–14 years . . . . .					1,490	19.1	1,280	16.8	3,410	18.2	3,390	18.4
15–24 years . . . . .	810	54.4	560	37.5	3,370	46.3	3,130	43.0	8,350	47.5	8,190	46.5
25–34 years . . . . .	1,520	88.6	1,160	66.7	6,660	79.1	6,400	75.4	16,140	79.4	15,470	75.2
35–44 years . . . . .	2,940	159.6	2,350	129.5	13,400	148.7	12,910	146.6	32,230	149.2	31,200	147.2
45–54 years . . . . .	4,570	328.3	4,160	309.9	22,010	324.0	22,370	344.1	52,000	320.6	51,690	332.2
55–64 years . . . . .	8,090	855.6	7,360	782.2	40,670	878.7	40,470	883.9	94,170	846.7	94,080	851.1
65–74 years . . . . .	17,390	1,980.3	16,830	1,901.5	89,920	2,085.3	91,060	2,112.0	203,820	1,958.9	208,360	1,998.3
75–84 years . . . . .	28,860	4,925.3	26,590	4,605.4	147,800	5,160.4	146,460	5,219.8	333,760	4,857.5	332,120	4,910.8
85 years and over. . . . .	31,630	14,002.2	29,340	13,281.6	170,080	15,413.1	167,180	15,601.9	379,350	14,336.7	366,470	14,226.3
Not stated . . . . .	20	...	10	...	120	...	190	...	300	...	310	...
Age-adjusted rate <sup>3</sup> . . . . .	...	390.3	...	359.1	...	400.3	...	404.2	...	382.7	...	386.5
<b>White</b>												
All ages . . . . .	169,070	909.9	157,950	853.9	873,160	959.5	864,890	961.0	1,990,320	909.7	1,971,930	907.8
Under 1 year. . . . .	} 2,490	64.1	2,330	60.0	7,840	<sup>2</sup> 626.6	8,170	<sup>2</sup> 657.2	19,100	<sup>2</sup> 635.0	19,870	<sup>2</sup> 658.8
1–4 years . . . . .					1,920	37.5	2,060	39.8	4,500	36.4	4,710	37.6
5–14 years . . . . .					2,510	19.9	2,340	18.8	6,250	20.6	6,160	20.5
15–24 years . . . . .	2,040	84.2	1,760	72.2	9,430	79.4	9,280	78.3	24,670	86.1	24,480	85.2
25–34 years . . . . .	3,260	116.8	3,220	113.3	15,820	115.3	17,360	125.1	39,280	118.6	42,260	125.5
35–44 years . . . . .	6,240	205.1	5,200	173.4	30,170	202.7	29,650	203.7	73,490	205.9	72,680	207.4
45–54 years . . . . .	9,140	393.6	9,080	404.5	45,830	404.2	46,590	428.5	109,210	403.0	107,430	412.3
55–64 years . . . . .	16,200	1,040.9	15,260	984.6	82,540	1,083.2	81,430	1,079.4	191,250	1,044.2	193,400	1,061.3
65–74 years . . . . .	35,290	2,516.8	33,830	2,394.0	181,140	2,630.3	181,870	2,641.4	412,730	2,483.0	416,380	2,501.4
75–84 years . . . . .	50,870	5,825.4	47,120	5,513.3	262,130	6,146.0	257,500	6,205.1	590,310	5,776.6	583,010	5,833.6
85 years and over. . . . .	43,450	15,181.7	40,070	14,366.4	233,520	16,713.6	228,260	16,871.8	518,780	15,490.6	500,890	15,388.3
Not stated . . . . .	80	...	70	...	330	...	370	...	770	...	660	...
Age-adjusted rate <sup>3</sup> . . . . .	...	472.8	...	447.8	...	491.4	...	497.9	...	473.6	...	479.2

See footnotes at end of table.

**Table 5. Provisional number of deaths and death rates, by age, race, and sex, and age-adjusted death rates by race and sex: United States, May 1995 and 1996, cumulative figures 1995 and 1996, and 12 months ending with May 1995 and 1996—Con.**

[Data are provisional, estimated from a 10-percent sample of deaths. Age-specific rates on an annual basis per 100,000 population in specified group; age-adjusted rates per 100,000 U.S. standard million population; see [Technical notes](#). Because of rounding of estimates, figures may not add to totals. For method of computation and information on standard errors of the estimates, see [Technical notes](#)]

Age, race, and sex	May				January–May				12 months ending with May			
	1996		1995		1996		1995		1996		1995	
	Number	Rate	Number	Rate	Number	Rate	Number	Rate	Number	Rate	Number	Rate
White male												
All ages	84,860	930.5	79,820	879.7	435,100	974.2	431,240	976.9	999,920	931.3	991,350	930.6
Under 1 year	} 1,420	71.3	1,310	65.8	4,160	<sup>2</sup> 648.6	4,570	<sup>2</sup> 717.5	10,590	<sup>2</sup> 685.9	10,890	<sup>2</sup> 703.9
1–4 years					1,100	41.5	1,310	49.8	2,590	40.9	2,860	44.5
5–14 years					1,410	21.7	1,420	22.3	3,680	23.6	3,740	24.2
15–24 years	1,460	117.5	1,320	105.6	6,930	113.7	7,050	115.5	18,380	125.0	18,480	125.4
25–34 years	2,230	158.2	2,410	168.0	11,470	165.5	13,000	185.5	28,770	172.0	31,680	186.3
35–44 years	4,270	279.8	3,730	248.1	20,850	279.2	21,000	287.6	51,030	285.1	51,280	292.0
45–54 years	5,760	502.2	5,960	537.8	29,290	523.0	29,680	553.2	69,990	523.0	68,320	531.3
55–64 years	9,710	1,296.8	9,470	1,271.7	49,580	1,352.4	49,530	1,366.6	115,540	1,311.8	118,440	1,353.0
65–74 years	20,520	3,260.7	19,310	3,053.8	103,550	3,351.4	104,360	3,389.6	237,350	3,184.2	238,980	3,213.0
75–84 years	25,090	7,308.7	23,360	7,032.6	129,780	7,753.3	126,090	7,827.9	292,270	7,303.1	284,660	7,351.8
85 years and over	14,330	17,884.4	12,890	16,677.9	76,710	19,647.6	72,980	19,488.4	169,150	18,110.3	161,580	17,953.3
Not stated	60	...	60	...	260	...	230	...	570	...	440	...
Age-adjusted rate <sup>3</sup>	...	600.2	...	577.8	...	623.8	...	637.6	...	605.2	...	615.2
White female												
All ages	84,210	890.0	78,130	829.0	438,060	945.3	433,650	945.6	990,400	888.8	980,580	885.8
Under 1 year	} 1,080	57.1	1,020	54.0	3,670	<sup>2</sup> 603.4	3,590	<sup>2</sup> 592.2	8,510	<sup>2</sup> 581.3	8,980	<sup>2</sup> 611.3
1–4 years					820	32.9	740	29.7	1,910	31.7	1,850	30.3
5–14 years					1,090	17.7	920	15.1	2,570	17.4	2,420	16.5
15–24 years	580	49.2	430	36.2	2,490	43.2	2,240	38.6	6,280	45.0	6,000	42.9
25–34 years	1,020	73.8	820	58.3	4,350	63.9	4,360	63.6	10,510	64.1	10,570	63.4
35–44 years	1,970	129.9	1,470	98.3	9,320	125.8	8,650	119.1	22,460	126.3	21,400	122.5
45–54 years	3,380	287.5	3,130	275.4	16,530	288.1	16,910	307.3	39,220	286.0	39,100	296.3
55–64 years	6,490	803.6	5,790	719.1	32,970	834.0	31,900	813.8	75,700	796.2	74,960	791.6
65–74 years	14,770	1,911.0	14,520	1,859.7	77,590	2,043.5	77,500	2,036.6	175,380	1,913.0	177,400	1,926.6
75–84 years	25,780	4,864.5	23,760	4,547.4	132,350	5,108.0	131,420	5,175.3	298,030	4,793.8	298,350	4,873.4
85 years and over	29,130	14,135.7	27,180	13,480.3	156,810	15,577.5	155,280	15,870.4	349,630	14,477.4	339,310	14,408.1
Not stated	20	...	10	...	70	...	140	...	190	...	220	...
Age-adjusted rate <sup>3</sup>	...	366.8	...	338.8	...	381.5	...	381.2	...	363.4	...	365.3
Black												
All ages	24,190	851.6	22,750	809.9	122,940	884.8	123,880	907.5	286,100	857.9	284,950	866.4
Under 1 year	} 1,020	132.6	1,120	146.6	3,720	<sup>2</sup> 1,422.8	3,980	<sup>2</sup> 1,545.4	8,690	<sup>2</sup> 1,388.2	9,680	<sup>2</sup> 1,561.3
1–4 years					730	72.4	990	95.2	1,590	64.5	2,180	87.3
5–14 years					810	32.7	810	32.9	1,770	29.8	2,040	34.9
15–24 years	590	127.4	610	131.9	3,440	151.4	3,510	156.2	8,530	155.8	9,140	168.5
25–34 years	1,270	276.9	1,240	269.1	6,250	278.0	6,390	284.6	15,710	290.5	15,390	282.5
35–44 years	2,160	482.3	2,200	501.4	10,800	493.1	11,680	549.4	26,250	500.9	26,920	526.9
45–54 years	2,670	931.8	2,210	809.9	12,960	928.3	12,310	934.0	30,190	909.1	28,580	908.5
55–64 years	3,490	1,915.6	3,060	1,698.7	16,960	1,902.6	16,800	1,920.1	39,130	1,827.7	38,930	1,847.7
65–74 years	4,770	3,459.3	4,740	3,464.3	23,710	3,509.5	25,910	3,893.3	55,470	3,413.5	58,460	3,637.8
75–84 years	4,890	6,873.0	4,580	6,536.5	25,780	7,406.1	24,870	7,302.6	58,340	6,978.5	56,120	6,827.3
85 years and over	3,330	14,041.2	2,980	12,852.4	17,670	15,207.2	16,530	14,671.3	40,220	14,415.8	37,310	13,767.5
Not stated	—	...	20	...	120	...	110	...	210	...	210	...
Age-adjusted rate <sup>3</sup>	...	754.4	...	719.2	...	775.7	...	806.2	...	755.5	...	773.1
Black male												
All ages	12,450	923.7	12,140	911.3	65,960	1,000.5	66,190	1,022.5	153,930	972.8	153,780	985.9
Under 1 year	} 490	125.6	630	162.6	2,010	<sup>2</sup> 1,522.4	2,140	<sup>2</sup> 1,633.5	4,630	<sup>2</sup> 1,460.6	5,400	<sup>2</sup> 1,714.3
1–4 years					370	71.4	490	95.8	800	64.0	1,150	90.8
5–14 years					470	37.4	510	42.2	1,090	36.2	1,290	43.5
15–24 years	390	168.2	500	216.4	2,760	242.8	2,780	248.4	6,820	249.0	7,300	269.5
25–34 years	840	386.8	920	422.3	4,200	394.7	4,520	425.1	10,700	418.0	10,930	424.3
35–44 years	1,280	612.1	1,390	679.1	7,000	685.2	7,760	780.7	17,270	706.1	17,930	752.4
45–54 years	1,670	1,286.1	1,350	1,091.7	8,220	1,300.9	7,630	1,275.8	18,940	1,258.5	17,810	1,248.9
55–64 years	2,060	2,601.2	1,630	2,083.8	10,100	2,609.2	9,180	2,412.4	22,930	2,462.9	21,980	2,399.6
65–74 years	2,470	4,288.5	2,590	4,551.5	12,810	4,544.6	13,740	4,963.6	30,230	4,458.7	30,810	4,612.3
75–84 years	2,130	8,164.8	2,070	8,124.2	12,170	9,532.8	11,580	9,362.6	26,910	8,794.1	26,150	8,775.2
85 years and over	1,130	16,470.7	1,040	15,500.2	5,790	17,289.6	5,790	17,716.1	13,490	16,654.3	12,890	16,316.5
Not stated	—	...	20	...	70	...	60	...	110	...	130	...
Age-adjusted rate <sup>3</sup>	...	961.7	...	940.0	...	1,033.5	...	1,056.6	...	1,004.2	...	1,022.3

See footnotes at end of table.

**Table 5. Provisional number of deaths and death rates, by age, race, and sex, and age-adjusted death rates by race and sex: United States, May 1995 and 1996, cumulative figures 1995 and 1996, and 12 months ending with May 1995 and 1996—Con.**

[Data are provisional, estimated from a 10-percent sample of deaths. Age-specific rates on an annual basis per 100,000 population in specified group; age-adjusted rates per 100,000 U.S. standard million population; see [Technical notes](#). Because of rounding of estimates, figures may not add to totals. For method of computation and information on standard errors of the estimates, see [Technical notes](#)]

Age, race, and sex	May				January–May				12 months ending with May							
	1996		1995		1996		1995		1996		1995					
	Number	Rate	Number	Rate	Number	Rate	Number	Rate	Number	Rate	Number	Rate				
Black female																
All ages . . . . .	11,740	786.5	10,610	718.5	56,980	780.4	57,690	803.9	132,170	754.1	131,170	758.6				
Under 1 year . . . . .	} 540	142.5	490	130.2	1,710	<sup>2</sup> 1,328.4	1,840	<sup>2</sup> 1,454.8	4,060	<sup>2</sup> 1,313.9	4,280	<sup>2</sup> 1,403.3				
1–4 years . . . . .					360	71.4	490	98.5	790	64.9	1,020	82.9				
5–14 years . . . . .					200	86.4	120	51.9	350	28.7	300	25.1	680	23.3	750	26.0
15–24 years . . . . .					430	178.1	320	131.7	680	60.8	730	65.8	1,700	62.2	1,850	68.2
25–34 years . . . . .					880	368.7	810	346.0	2,050	173.2	1,870	158.6	5,020	176.3	4,460	155.3
35–44 years . . . . .	1,000	638.2	850	569.6	3,800	325.7	3,920	346.2	8,980	321.3	8,990	329.8				
45–54 years . . . . .	1,430	1,388.4	1,430	1,403.1	4,740	619.5	4,670	648.0	11,250	619.5	10,770	626.2				
55–64 years . . . . .	2,300	2,864.4	2,150	2,690.2	6,850	1,359.3	7,620	1,539.9	16,200	1,338.8	16,940	1,422.3				
65–74 years . . . . .	2,760	6,125.1	2,500	5,606.8	10,900	2,768.6	12,170	3,129.0	25,250	2,666.3	27,650	2,944.6				
75–84 years . . . . .	2,200	13,052.4	1,950	11,834.9	13,610	6,171.4	13,290	6,119.3	31,420	5,928.3	29,970	5,719.5				
85 years and over . . . . .	—	...	—	...	11,880	14,362.7	10,740	13,438.7	26,720	13,494.9	24,420	12,718.8				
Not stated . . . . .	—	...	—	...	50	...	50	...	100	...	80	...				
Age-adjusted rate <sup>3</sup> . . . . .	...	595.2	...	549.2	...	577.1	...	613.4	...	562.5	...	579.6				

... Category not applicable.

— Quantity zero.

<sup>1</sup>Includes races other than white and black.

<sup>2</sup>Death rates for "Under 1 year" (based on population estimates) differ from infant mortality rates (based on live births); see [table 9](#) for infant mortality rates.

<sup>3</sup> For method of computation, see [Technical notes](#).

NOTES: Figures include all revisions received from the States. Cumulative and 12-month figures for the current year reflect revisions received for previous months, and figures for earlier years may differ from those previously published.

**Table 6. Provisional number of deaths and death rates for 72 selected causes, Human immunodeficiency virus infection, and Alzheimer's disease: United States, May 1995 and 1996, cumulative figures 1995 and 1996, and 12 months ending with May 1995 and 1996**

[Data are provisional, estimated from a 10-percent sample of deaths. Rates on an annual basis per 100,000 estimated population. Because of rounding of estimates, figures may not add to totals. For method of computation and information on standard errors of the estimates, see [Technical notes](#). For explanation of asterisks preceding cause-of-death categories, see [Technical notes](#)]

Cause of death (Based on the Ninth Revision, International Classification of Diseases, 1975)	May		May		January–May		January–May		12 months ending with May		12 months ending with May	
	1996		1995		1996		1995		1996		1995	
	Number	Rate	Number	Rate	Number	Rate	Number	Rate	Number	Rate	Number	Rate
All causes . . . . .	197,000	877.6	184,000	824.2	1,012,000	922.2	1,005,000	927.4	2,316,000	877.9	2,295,000	877.8
Shigellosis and amebiasis . . . . .004,006	–	*	–	*	–	*	–	*	–	*	–	*
Certain other intestinal infections. . . . .007–009	20	*	40	*	360	0.3	240	0.2	750	0.3	620	0.2
Tuberculosis . . . . .010–018	60	*	70	*	450	0.4	670	0.6	1,140	0.4	1,450	0.6
Tuberculosis of respiratory system . . . . .010–012	60	*	30	*	360	0.3	500	0.5	930	0.4	1,050	0.4
Other tuberculosis . . . . .013–018	–	*	40	*	90	*	180	0.2	210	0.1	410	0.2
Whooping cough. . . . .033	–	*	–	*	10	*	–	*	20	*	–	*
Streptococcal sore throat, scarlatina, and erysipelas. . . . .034–035	–	*	–	*	–	*	10	*	–	*	10	*
Meningococcal infection . . . . .036	20	*	40	*	130	0.1	180	0.2	250	0.1	340	0.1
Septicemia . . . . .038	1,900	8.5	1,660	7.4	9,700	8.8	9,600	8.9	21,300	8.1	20,290	7.8
Acute poliomyelitis. . . . .045	–	*	–	*	–	*	–	*	–	*	–	*
Measles . . . . .055	–	*	–	*	–	*	–	*	–	*	–	*
Viral hepatitis . . . . .070	340	1.5	290	1.3	1,520	1.4	1,440	1.3	3,600	1.4	3,180	1.2
Syphilis . . . . .090–097	–	*	–	*	–	*	80	*	50	*	120	0.0
All other infectious and parasitic diseases <sup>1</sup> . . . . .001–003,005,020–032,037,039–041,*042–*044,046–054,056–066,071–088,098–139	3,500	15.6	3,860	17.3	18,150	16.5	20,890	19.3	46,270	17.5	48,690	18.6
Malignant neoplasms, including neoplasms of lymphatic and hematopoietic tissues . . . . .140–208	45,900	204.7	43,370	194.6	228,250	207.9	224,200	206.9	540,500	204.9	539,860	206.5
Malignant neoplasms of lip, oral cavity, and pharynx . . . . .140–149	590	2.6	620	2.8	3,280	3.0	3,480	3.2	7,780	2.9	8,010	3.1
Malignant neoplasms of digestive organs and peritoneum . . . . .150–159	10,880	48.5	10,100	45.3	53,230	48.5	51,890	47.9	126,590	48.0	126,620	48.4
Malignant neoplasms of respiratory and intrathoracic organs . . . . .160–165	13,590	60.6	12,280	55.1	67,310	61.3	64,610	59.6	157,640	59.7	154,980	59.3
Malignant neoplasm of breast . . . . .174–175	3,750	16.7	3,330	14.9	18,430	16.8	18,410	17.0	44,030	16.7	44,160	16.9
Malignant neoplasms of genital organs . . . . .179–187	5,370	23.9	4,800	21.5	25,230	23.0	25,510	23.5	60,510	22.9	62,190	23.8
Malignant neoplasms of urinary organs . . . . .188–189	1,890	8.4	2,170	9.7	9,840	8.9	10,060	9.3	22,860	8.7	22,410	8.6
Malignant neoplasms of all other and unspecified sites . . . . .170–173,190–199	5,320	23.7	5,630	25.3	27,650	25.2	27,320	25.2	65,920	25.0	66,890	25.6
Leukemia. . . . .204–208	1,620	7.2	1,710	7.7	8,750	8.0	8,240	7.6	20,130	7.6	19,740	7.5
Other malignant neoplasms of lymphatic and hematopoietic tissues. . . . .200–203	2,890	12.9	2,730	12.2	14,540	13.2	14,680	13.5	35,020	13.3	34,870	13.3
Benign neoplasms, carcinoma in situ, and neoplasms of uncertain behavior and of unspecified nature . . . . .210–239	680	3.0	760	3.4	3,390	3.1	3,940	3.6	7,850	3.0	8,310	3.2
Diabetes mellitus . . . . .250	5,210	23.2	4,940	22.2	26,540	24.2	25,920	23.9	58,950	22.3	57,030	21.8
Nutritional deficiencies . . . . .260–269	260	1.2	320	1.4	1,750	1.6	1,660	1.5	3,920	1.5	3,480	1.3
Anemias . . . . .280–285	280	1.2	350	1.6	1,610	1.5	1,900	1.8	3,990	1.5	4,330	1.7
Meningitis . . . . .320–322	70	*	70	*	320	0.3	420	0.4	680	0.3	870	0.3
Major cardiovascular diseases . . . . .390–448	81,420	363.1	75,570	339.1	417,840	380.6	416,810	384.6	943,550	357.6	939,190	359.2
Diseases of heart . . . . .390–398,402,404–429	62,550	278.9	58,950	264.6	324,290	295.4	323,580	298.6	731,580	277.3	730,050	279.2
Rheumatic fever and rheumatic heart disease. . . . .390–398	380	1.7	370	1.7	2,290	2.1	2,350	2.2	4,980	1.9	5,360	2.0
Hypertensive heart disease . . . . .402	2,330	10.4	1,980	8.9	11,400	10.4	10,420	9.6	25,470	9.7	23,810	9.1
Hypertensive heart and renal disease . . . . .404	140	0.6	240	1.1	980	0.9	1,170	1.1	2,150	0.8	2,530	1.0
Ischemic heart disease . . . . .410–414	40,820	182.0	38,680	173.6	209,620	190.9	212,270	195.8	474,770	179.9	479,940	183.6
Acute myocardial infarction . . . . .410	18,590	82.9	17,490	78.5	95,220	86.7	96,750	89.3	215,660	81.7	221,060	84.5
Other acute and subacute forms of ischemic heart disease . . . . .411	260	1.2	180	0.8	1,140	1.0	1,150	1.1	2,580	1.0	2,680	1.0
Angina pectoris . . . . .413	80	*	40	*	320	0.3	310	0.3	740	0.3	810	0.3
Old myocardial infarction and other forms of chronic ischemic heart disease . . . . .412,414	21,890	97.6	20,970	94.1	112,950	102.9	114,060	105.2	255,790	97.0	255,390	97.7
Other diseases of endocardium . . . . .424	1,380	6.2	1,170	5.2	7,330	6.7	6,850	6.3	16,000	6.1	15,080	5.8
All other forms of heart disease . . . . .415–423,425–429	17,500	78.0	16,510	74.1	92,670	84.4	90,520	83.5	208,220	78.9	203,340	77.8
Hypertension with or without renal disease . . . . .401,403	1,070	4.8	1,060	4.8	5,470	5.0	5,540	5.1	12,410	4.7	11,410	4.4
Cerebrovascular diseases . . . . .430–438	14,380	64.1	12,140	54.5	70,110	63.9	68,830	63.5	158,040	59.9	154,990	59.3
Intracerebral and other intracranial hemorrhage. . . . .431–432	2,030	9.0	1,650	7.4	10,100	9.2	9,430	8.7	22,370	8.5	21,300	8.1
Cerebral thrombosis and unspecified occlusion of cerebral arteries. . . . .434,0,434,9	1,080	4.8	1,140	5.1	5,380	4.9	6,160	5.7	12,630	4.8	14,460	5.5
Cerebral embolism . . . . .434.1	70	*	60	*	290	0.3	240	0.2	700	0.3	750	0.3
All other and late effects of cerebrovascular diseases . . . . .430,433,435–438	11,200	49.9	9,290	41.7	54,340	49.5	53,000	48.9	122,350	46.4	118,490	45.3

See footnotes at end of table.

**Table 6. Provisional number of deaths and death rates for 72 selected causes, Human immunodeficiency virus infection, and Alzheimer's disease: United States, May 1995 and 1996, cumulative figures 1995 and 1996, and 12 months ending with May 1995 and 1996—Con.**

[Data are provisional, estimated from a 10-percent sample of deaths. Rates on an annual basis per 100,000 estimated population. Because of rounding of estimates, figures may not add to totals. For method of computation and information on standard errors of the estimates, see [Technical notes](#). For explanation of asterisks preceding cause-of-death categories, see [Technical notes](#)]

Cause of death (Based on the Ninth Revision, International Classification of Diseases, 1975)	May		1995		January–May		1995		12 months ending with May		1995		
	1996		1995		1996		1995		1996		1995		
	Number	Rate	Number	Rate	Number	Rate	Number	Rate	Number	Rate	Number	Rate	
Cerebrovascular diseases—Con.													
Atherosclerosis . . . . .	440	1,260	5.6	1,320	5.9	6,860	6.2	7,470	6.9	15,780	6.0	16,730	6.4
Other diseases of arteries, arterioles, and capillaries . . . . .	.441–448	2,170	9.7	2,090	9.4	11,110	10.1	11,390	10.5	25,730	9.8	26,010	9.9
Acute bronchitis and bronchiolitis . . . . .	.466	50	*	40	*	250	0.2	330	0.3	460	0.2	490	0.2
Pneumonia and influenza . . . . .	.480–487	6,720	30.0	5,910	26.5	39,580	36.0	39,750	36.7	80,000	30.3	79,280	30.3
Pneumonia . . . . .	.480–486	6,710	29.9	5,910	26.5	39,120	35.6	39,350	36.3	79,470	30.1	78,810	30.1
Influenza . . . . .	.487	10	*	—	*	460	0.4	400	0.4	540	0.2	460	0.2
Chronic obstructive pulmonary diseases and allied conditions . . . . .	.490–496	9,170	40.9	8,340	37.4	49,510	45.1	49,010	45.2	104,050	39.4	101,690	38.9
Bronchitis, chronic and unspecified . . . . .	.490–491	210	0.9	210	0.9	1,650	1.5	1,490	1.4	3,130	1.2	3,290	1.3
Emphysema . . . . .	.492	1,570	7.0	1,270	5.7	8,160	7.4	8,500	7.8	17,070	6.5	17,740	6.8
Asthma . . . . .	.493	390	1.7	510	2.3	2,080	1.9	2,580	2.4	5,010	1.9	5,330	2.0
Other chronic obstructive pulmonary diseases and allied conditions . . . . .	.494–496	7,000	31.2	6,350	28.5	37,630	34.3	36,430	33.6	78,840	29.9	75,330	28.8
Ulcer of stomach and duodenum . . . . .	.531–533	490	2.2	590	2.6	2,370	2.2	2,690	2.5	5,570	2.1	5,910	2.3
Appendicitis . . . . .	.540–543	50	*	50	*	200	0.2	190	0.2	410	0.2	420	0.2
Hernia of abdominal cavity and intestinal obstruction without mention of hernia . . . . .	.550–553,560	430	1.9	520	2.3	2,730	2.5	2,740	2.5	5,950	2.3	6,260	2.4
Chronic liver disease and cirrhosis . . . . .	.571	1,930	8.6	1,880	8.4	10,400	9.5	10,910	10.1	24,580	9.3	25,860	9.9
Cholelithiasis and other disorders of gallbladder . . . . .	.574–575	270	1.2	200	0.9	1,090	1.0	1,200	1.1	2,580	1.0	2,640	1.0
Nephritis and nephrotic syndrome, and nephrosis . . . . .	.580–589	2,290	10.2	2,220	10.0	11,880	10.8	11,490	10.6	26,010	9.9	25,240	9.7
Acute glomerulonephritis and nephrotic syndrome . . . . .	.580–581	10	*	20	*	90	*	120	0.1	250	0.1	230	0.1
Chronic glomerulonephritis, nephritis and nephropathy, not specified as acute or chronic, and renal sclerosis, unspecified . . . . .	.582–583,587	170	0.8	50	*	740	0.7	530	0.5	1,550	0.6	1,470	0.6
Renal failure, disorders resulting from impaired renal function, and small kidney of unknown cause . . . . .	.584–586,588–589	2,110	9.4	2,160	9.7	11,050	10.0	10,850	10.0	24,210	9.2	23,540	9.0
Infections of kidney . . . . .	.590	80	*	60	*	440	0.4	300	0.3	870	0.3	830	0.3
Hyperplasia of prostate . . . . .	.600	50	*	10	*	220	0.2	180	0.2	470	0.2	400	0.2
Complications of pregnancy, childbirth, and the puerperium . . . . .	.630–676	30	*	10	*	140	0.1	90	*	370	0.1	310	0.1
Pregnancy with abortive outcome . . . . .	.630–638	—	*	—	*	10	*	—	*	30	*	20	*
Other complications of pregnancy, childbirth, and the puerperium . . . . .	.640–676	30	*	10	*	130	0.1	90	*	340	0.1	290	0.1
Congenital anomalies . . . . .	.740–759	1,020	4.5	980	4.4	4,820	4.4	4,800	4.4	11,570	4.4	11,760	4.5
Certain conditions originating in the perinatal period . . . . .	.760–779	1,120	5.0	1,130	5.1	5,350	4.9	5,500	5.1	13,250	5.0	13,820	5.3
Birth trauma, intrauterine hypoxia, birth asphyxia, and respiratory distress syndrome . . . . .	.767–769	160	0.7	110	0.5	820	0.7	740	0.7	2,060	0.8	2,120	0.8
Other conditions originating in the perinatal period . . . . .	.760–766,770–779	960	4.3	1,030	4.6	4,530	4.1	4,760	4.4	11,190	4.2	11,700	4.5
Symptoms, signs, and ill-defined conditions . . . . .	.780–799	3,400	15.2	3,250	14.6	17,990	16.4	17,820	16.4	42,390	16.1	40,950	15.7
All other diseases . . . . .	.Residual	17,760	79.2	16,640	74.7	96,880	88.2	92,750	85.6	217,580	82.5	206,640	79.0
Accidents and adverse effects . . . . .	.E800–E949	7,560	33.7	6,300	28.3	36,640	33.4	34,680	32.0	91,750	34.8	88,320	33.8
Motor vehicle accidents . . . . .	.E810–E825	3,740	16.7	2,940	13.2	17,310	15.8	16,200	14.9	44,890	17.0	42,540	16.3
All other accidents and adverse effects . . . . .	.E800–E807,E826–E949	3,820	17.0	3,360	15.1	19,330	17.6	18,480	17.0	46,870	17.8	45,780	17.5
Suicide . . . . .	.E950–E959	2,850	12.7	2,500	11.2	12,170	11.1	12,680	11.7	29,310	11.1	30,790	11.8
Homicide and legal intervention . . . . .	.E960–E978	1,620	7.2	1,610	7.2	8,780	8.0	9,180	8.5	21,970	8.3	23,200	8.9
All other external causes . . . . .	.E980–E999	210	0.9	120	0.5	1,010	0.9	820	0.7	2,460	0.9	2,340	0.9
Human immunodeficiency virus infection <sup>2</sup> . . . . .	*042–*044	2,900	12.9	3,230	14.5	15,610	14.2	17,940	16.5	40,040	15.2	42,130	16.1
Alzheimer's disease . . . . .	.331.0	1,730	7.7	1,460	6.5	9,820	9.0	8,920	8.2	21,380	8.1	19,370	7.4

— Quantity zero. \* Figure does not meet standards of reliability or precision; see [Technical notes](#). 0.0 Quantity more than zero but less than 0.05.

<sup>1</sup>Includes data for deaths due to Human immunodeficiency virus infection (category numbers \*042–\*044) shown separately below; see [Technical notes](#).

<sup>2</sup>Included in All other infectious and parasitic diseases shown above.

NOTES: Figures include all revisions received from the States. Cumulative and 12-month figures for the current year reflect revisions received for previous months, and figures for earlier years may differ from those previously published.

**Table 7. Provisional number of deaths and death rates for 16 selected subcategories of Malignant neoplasms, including neoplasms of lymphatic and hematopoietic tissues: United States, May 1995 and 1996, cumulative figures 1995 and 1996, and 12 months ending with May 1995 and 1996**

[Data are provisional, estimated from a 10-percent sample of deaths. Rates on an annual basis per 100,000 estimated population. Because of rounding of estimates, figures may not add to totals. For method of computation and information on standard errors of the estimates, see [Technical notes](#)]

Cause of death (Based on the Ninth Revision, International Classification of Diseases, 1975)	May				January–May				12 months ending with May			
	1996		1995		1996		1995		1996		1995	
	Number	Rate	Number	Rate	Number	Rate	Number	Rate	Number	Rate	Number	Rate
Malignant neoplasms, including neoplasms of lymphatic and hematopoietic tissues <sup>1</sup> . . . . .140–208	45,900	204.7	43,370	194.6	228,250	207.9	224,200	206.9	540,500	204.9	539,860	206.5
Malignant neoplasm of esophagus . . . . .150	960	4.3	790	3.5	4,750	4.3	4,390	4.0	10,720	4.1	10,730	4.1
Malignant neoplasm of stomach . . . . .151	1,200	5.3	1,230	5.5	5,420	4.9	5,820	5.4	13,410	5.1	13,970	5.3
Malignant neoplasms of colon, rectum, rectosigmoid junction, and anus . . . . .153,154	4,710	21.0	4,600	20.6	23,920	21.8	23,400	21.6	56,350	21.4	58,050	22.2
Malignant neoplasm of pancreas . . . . .157	2,710	12.1	2,240	10.0	11,770	10.7	11,300	10.4	27,850	10.6	26,770	10.2
Malignant neoplasms of trachea, bronchus, and lung . . . . .162	13,150	58.6	11,900	53.4	65,110	59.3	62,310	57.5	152,450	57.8	149,550	57.2
Malignant melanoma of skin . . . . .172	650	2.9	670	3.0	2,710	2.5	3,040	2.8	6,690	2.5	7,130	2.7
Malignant neoplasm of cervix uteri . . . . .180	370	1.6	400	1.8	1,780	1.6	1,730	1.6	4,820	1.8	4,460	1.7
Malignant neoplasms of body of uterus and of uterus, part unspecified . . . . .179,182	580	2.6	350	1.6	2,490	2.3	2,410	2.2	6,190	2.3	5,830	2.2
Malignant neoplasm of ovary . . . . .183.0	1,230	5.5	1,300	5.8	5,580	5.1	5,890	5.4	13,270	5.0	14,200	5.4
Malignant neoplasm of prostate . . . . .185	3,050	13.6	2,520	11.3	14,600	13.3	14,680	13.5	34,470	13.1	35,750	13.7
Malignant neoplasm of bladder . . . . .188	910	4.0	1,150	5.2	4,960	4.5	5,200	4.8	11,300	4.3	11,040	4.2
Malignant neoplasms of kidney and other and unspecified urinary organs . . . . .189	980	4.4	1,020	4.6	4,880	4.4	4,870	4.5	11,560	4.4	11,370	4.3
Malignant neoplasms of brain and other and unspecified parts of nervous system . . . . .191,192	870	3.9	840	3.8	4,960	4.5	4,600	4.2	11,890	4.5	12,090	4.6
Hodgkin's disease . . . . .201	70	*	160	0.7	690	0.6	670	0.6	1,550	0.6	1,550	0.6
Malignant lymphoma other than Hodgkin's disease . . . . .200,202	1,900	8.5	1,910	8.6	9,280	8.4	9,730	9.0	22,820	8.6	22,960	8.8
Multiple myeloma and other immunoproliferative neoplasms . . . . .203	910	4.0	660	3.0	4,570	4.1	4,280	3.9	10,650	4.0	10,350	4.0

\* Figure does not meet standards of reliability or precision; see [Technical notes](#).

<sup>1</sup>Includes figures for subcategories not shown below.

NOTES: Figures include all revisions received from the States. Cumulative and 12-month figures for the current year reflect revisions received for previous months, and figures for earlier years may differ from those previously published.

**Table 8. Provisional number of deaths and death rates for firearm mortality: United States, May 1995 and 1996, cumulative figures 1995 and 1996, and 12 months ending with May 1995 and 1996**

[Data are provisional, estimated from a 10-percent sample of deaths. Rates on an annual basis per 100,000 estimated population. Because of rounding of estimates, figures may not add to totals. For method of computation and information on standard errors of the estimates, see [Technical notes](#)]

Cause of death (Based on the Ninth Revision, International Classification of Diseases, 1975)	May				January–May				12 months ending with May			
	1996		1995		1996		1995		1996		1995	
	Number	Rate	Number	Rate	Number	Rate	Number	Rate	Number	Rate	Number	Rate
Injury by firearms. . . . .E922,E955.0–E955.4,E965.0–965.4,E970,E985.0–E985.4	3,060	13.6	2,670	12.0	14,540	13.2	14,850	13.7	35,240	13.4	37,840	14.5
Accident caused by firearm missile . . . . .E922	90	*	90	*	530	0.5	530	0.5	1,360	0.5	1,540	0.6
Suicide by firearms . . . . .E955.0–E955.4	1,790	8.0	1,390	6.2	7,740	7.0	7,690	7.1	18,030	6.8	19,170	7.3
Homicide and legal intervention by firearms. . . . .E965.0–E965.4,E970	1,160	5.2	1,180	5.3	6,170	5.6	6,500	6.0	15,620	5.9	16,800	6.4
Injury by firearms, undetermined whether accidentally or purposely inflicted. . . . .E985.0–E985.4	20	*	10	*	110	0.1	120	0.1	240	0.1	330	0.1

\* Figure does not meet standards of reliability or precision; see [Technical notes](#).

NOTES: Figures include all revisions received from the States. Cumulative and 12-month figures for the current year reflect revisions received for previous months, and figures for earlier years may differ from those previously published.

**Table 9. Provisional number of deaths under 1 year and infant mortality rates, by age and for 10 selected causes: United States, May 1995 and 1996, cumulative figures 1995 and 1996, and 12 months ending with May 1995 and 1996**

[Data are provisional, estimated from a 10-percent sample of deaths. Rates on an annual basis per 100,000 live births. Because of rounding of estimates, figures may not add to totals. For method of computation and information on standard errors of the estimates, see [Technical notes](#)]

Age and cause of death (Based on the Ninth Revision, International Classification of Diseases, 1975)	May				January–May				12 months ending with May			
	1996		1995		1996		1995		1996		1995	
	Number	Rate	Number	Rate	Number	Rate	Number	Rate	Number	Rate	Number	Rate
Total, under 1 year . . . . .	2,400	699.3	2,500	753.4	11,900	742.2	12,600	777.8	28,600	738.4	30,600	776.1
Under 28 days . . . . .	1,600	470.3	1,630	496.6	7,550	470.4	7,800	482.5	18,430	475.3	19,520	494.5
28 days–11 months . . . . .	780	229.3	830	252.9	4,360	271.7	4,750	293.8	10,190	262.8	11,100	281.2
Certain gastrointestinal diseases. . . . .008–009,535,555–558	–	*	40	*	80	*	100	*	170	4.4	260	6.6
Pneumonia and influenza. . . . .480–487	10	*	30	*	170	10.6	190	11.8	340	8.8	360	9.1
Congenital anomalies . . . . .740–759	610	179.3	610	185.8	2,680	167.0	2,760	170.7	6,080	156.8	6,870	174.0
Disorders relating to short gestation and unspecified low birthweight . . . . .765	430	126.4	320	97.5	1,630	101.6	1,600	99.0	3,580	92.3	3,790	96.0
Birth trauma . . . . .767	–	*	30	*	90	*	60	*	230	5.9	160	4.1
Intrauterine hypoxia and birth asphyxia . . . . .768	60	*	10	*	240	15.0	180	11.1	530	13.7	550	13.9
Respiratory distress syndrome. . . . .769	90	*	70	*	470	29.3	470	29.1	1,220	31.5	1,330	33.7
Other conditions originating in the perinatal period. . . . .760–764,766,770–779	520	152.9	700	213.3	2,860	178.2	3,080	190.5	7,530	194.2	7,750	196.3
Sudden infant death syndrome . . . . .798.0	250	73.5	230	70.1	1,280	79.8	1,400	86.6	2,790	71.9	3,430	86.9
All other causes . . . . .Residual	400	117.6	440	134.1	2,410	150.2	2,720	168.3	6,130	158.1	6,100	154.5

– Quantity zero.

\* Figure does not meet standards of reliability or precision; see [Technical notes](#).

NOTES: Figures include all revisions received from the States. Cumulative and 12-month figures for the current year reflect revisions received for previous months, and figures for earlier years may differ from those previously published.



## Technical notes

### Nature and sources of data

Data in this report are provisional unless otherwise specified and include only events occurring within the United States (50 States and the District of Columbia). Mortality data exclude fetal deaths. Data for the Commonwealth of Puerto Rico are not included in the U.S. totals.

Birth, death, and infant death figures in [tables 2](#) and [4](#) for each State are estimates by State of residence. These estimates are derived by applying adjustment ratios to the actual counts of certificates for all events occurring in the State and received in registration offices during a 1-month period regardless of date of the event. The adjustment ratios for each data year represent the observed relationship between final State occurrence and residence figures for the three most recent years for which final data were available and are expressed as a single ratio for each State. As in previous years, monthly State marriage and divorce figures represent the actual count of all events occurring in the State (State of occurrence) that were received in the registration offices during the 1-month period. Delay in the receipt of certificates in a registration office may result in a low State figure for a given month followed by a high figure for the month(s) in which the delayed records are received. Data for previous months and cumulative data include revised figures received from the States.

Figures for births, deaths, and infant deaths for California in [tables 2](#) and [4](#) contain adjustments for varying lengths of State reporting periods. Figures for Texas for all events shown in [tables 2–4](#) also are adjusted for varying lengths of State reporting periods. The figures for both States are adjusted by the ratio between the number of days in the data month and the number of days in the State reporting period. The adjusted figures are included in the U.S. totals shown elsewhere in this report.

U.S. totals for births, deaths, and infant deaths are based on the State estimates by State of residence and, therefore, in effect, exclude events to nonresidents of the United States. Events to nonresidents of the United States are included in all

marriage and divorce figures. The effect of excluding events to nonresidents from the U.S. totals is small.

Provisional totals for the United States include estimates for State data shown as not available. Provisional totals for births and marriages for the entire United States include adjustments for observed differences between provisional and final monthly figures.

Divorce figures include reported annulments. The monthly national divorce estimate is obtained by multiplying the total for the reporting areas by the ratio observed between the most recent final annual divorce total for the United States and the provisional total for the reporting areas combined.

*Random variation*—Although the counts in this report are not subject to sampling variability (except the Current Mortality Sample), they may be affected by random variation. When the number of events is small and the probability of such an event is small, considerable caution must be observed in interpreting the data. Such infrequent events may be assumed to follow a Poisson probability distribution. For this distribution a simple approximation may be used to estimate the random variation as follows:

If  $N$  is the number of events in the population and  $R$  is the corresponding rate, the chances are 19 in 20 that

$$1. N - 2\sqrt{N} \text{ and } N + 2\sqrt{N}$$

covers the “true” number of events.

$$2. R - 2 \frac{R}{\sqrt{N}} \text{ and } R + 2 \frac{R}{\sqrt{N}}$$

covers the “true” rate.

If the rate  $R_1$  corresponding to  $N_1$  events is compared with the rate  $R_2$  corresponding to  $N_2$  events, the difference between the two rates may be regarded as statistically significant at the 0.05 level if it exceeds

$$2 \sqrt{\frac{R_1^2}{N_1} + \frac{R_2^2}{N_2}}$$

Additional information on random variation in numbers of events, rates, and ratios may be found in the technical appendixes of *Vital Statistics of the United States, 1990, Volumes I and II*.

### Rates

Rates are on an annual basis and, except for infant mortality rates, are per 1,000 or 100,000 estimated population residing in the United States. The populations used for computing these rates are furnished by the U.S. Bureau of the Census. Rates shown in this report beginning with 1992 were computed using populations based on the 1990 Census enumeration comparable to those used for final data. Monthly rates are based on populations estimated for the specific month. Year-to-date rates are averages of monthly rates that have been weighted by the number of days in the corresponding months. Rates for 12-month periods are the sum of events for the period per population estimated at the midpoint of the period.

Infant mortality rates are deaths under 1 year of age for the specified period (monthly, year-to-date, or 12-month period) per 1,000 or 100,000 live births. Births used for computing monthly and year-to-date infant mortality rates are adjusted for monthly variation in the number of births. Births used to compute 12-month rates do not contain this adjustment. Births used for computing infant mortality rates are not corrected for observed differences between provisional and final monthly figures as described earlier in “Nature and sources of data.” Because monthly infant mortality rates are based on relatively few events, they are highly variable. Therefore, comparisons of monthly infant mortality rates should be interpreted cautiously; see “[Random variation](#).”

Age-adjusted death rates are used to compare relative mortality risks across groups and over time. However, they should be viewed as constructs or indexes rather than as direct or actual measures of mortality risk. Statistically, they are weighted averages of the age-specific death rates, where the weights represent the fixed population proportions by age. See chapter 5 of an earlier report (1). The age-adjusted death rates presented in this report were computed by the direct method, that is, by applying age-specific death rates to the U.S. standard million population (2). See also chapter 10 of an earlier report (1). Age groups in [table 5](#) were used to compute the age-adjusted

rates shown in that table. It is important not to compare age-adjusted rates with crude rates.

### Current Mortality Sample

The Current Mortality Sample (CMS) is a 10-percent systematic sample of death certificates drawn each month after the certificates are counted in the State registration offices. Deaths and death rates for the United States by age, race, sex, and cause are estimated based on the sample. Because of the additional time required to select and process the certificates, data based on the CMS are published 1 month after publication of the U.S. and State counts. Complete information concerning the underlying cause of death sometimes is not available when the sample is drawn. As a result estimates based on sample counts for certain causes are biased. Correction for bias is not made in this report.

Estimated numbers of deaths based on the sample were proportionately adjusted to be consistent with estimates based on the count of death certificates received in State registration offices.

*HIV infection*—Beginning with data for 1987, the National Center for Health Statistics introduced categories \*042–\*044 for classifying and coding Human immunodeficiency virus (HIV) infection. The asterisks before the categories indicate that these codes are not part of the

*Ninth Revision, International Classification of Diseases*. Deaths classified to these categories are included in All other infectious and parasitic diseases in the List of 72 Selected Causes of Death and are also shown separately at the bottom of table 6.

*Sampling variability*—Because the estimates of deaths and death rates presented in this report with the exception of total deaths and deaths under 1 year are based on a sample of death certificates, they are subject to sampling variability. The estimated relative standard error in the following table is a measure of the

**Relative standard errors for estimated numbers of deaths from the Current Mortality Sample expressed as a percent of the estimate**

Estimated number of deaths	Relative standard error of estimate (as percent)	
	170,000 estimated deaths each month	2,000,000 estimated deaths each year
10 . . . . .	94.9	94.9
20 . . . . .	67.1	67.1
50 . . . . .	42.4	42.4
100 . . . . .	30.0	30.0
200 . . . . .	21.2	21.2
500 . . . . .	13.4	13.4
1,000 . . . . .	9.5	9.5
2,000 . . . . .	6.7	6.7
5,000 . . . . .	4.2	4.2
10,000 . . . . .	2.9	3.0
20,000 . . . . .	2.0	2.1
50,000 . . . . .	1.1	1.3
100,000 . . . . .	0.6	0.9
200,000 . . . . .	...	0.6
500,000 . . . . .	...	0.4
1,000,000 . . . . .	...	0.2

sampling error of the estimated number of deaths (or of the estimated death rate) expressed as a percent of the estimate. The first column refers to monthly estimates; the second to annual; cumulative year-to-date totals fall between the two.

The chances are about 2 in 3 that the percent difference between an estimate and the result of a complete count is less than the percent shown. The chances are about 19 in 20 that the percent difference is less than twice the percent shown. A figure based on 100 or fewer estimated deaths has a relative standard error of 30 percent or more and is, therefore, considered unreliable. A rate based on 100 or fewer estimated deaths has been replaced by an asterisk.

Unless otherwise specified comparisons made in the text between death rates based on the CMS were statistically significant at the 0.05 level of significance. Lack of comment in the text about any two rates does not mean that the difference was tested and found not to be significant at this level.

### References

1. Feinleib M, Zarate AO, eds. Reconsidering age adjustment procedures: Workshop proceedings. National Center for Health Statistics. Vital Health Stat 4(29). 1992.
2. Grove RD, Hetzel AM. Vital statistics rates in the United States, 1940–1960. Public Health Service. Washington: National Center for Health Statistics. 1968.

---

**Suggested citation**

National Center for Health Statistics. Births, marriages, divorces, and deaths for June 1996. Monthly vital statistics report; vol 45 no 6. Hyattsville, Maryland: Public Health Service. 1996.

---

**Copyright information**

All material appearing in this report is in the public domain and may be reproduced or copied without permission; citation as to source, however, is appreciated.

---

**National Center for Health Statistics**

Director  
Edward J. Sondik, Ph.D.

Deputy Director  
Jack R. Anderson

**Division of Vital Statistics**

Director  
Mary Anne Freedman

---

**DEPARTMENT OF  
HEALTH & HUMAN SERVICES**

Public Health Service  
Centers for Disease Control and Prevention  
National Center for Health Statistics  
6525 Belcrest Road  
Hyattsville, Maryland 20782

FIRST CLASS MAIL  
POSTAGE & FEES PAID  
PHS/NCHS  
PERMIT NO. G-281

---

**OFFICIAL BUSINESS  
PENALTY FOR PRIVATE USE, \$300**

---

To receive this publication regularly, contact the National Center for Health Statistics by calling 301-436-8500  
E-mail: [nchsquery@nch10a.em.cdc.gov](mailto:nchsquery@nch10a.em.cdc.gov)  
Internet: <http://www.cdc.gov/nchswww/nchshome.htm>

---

DHHS Publication No. (PHS) 97-1120  
7-0130 (12/96)