

# Monthly Vital Statistics Report



Provisional Data From the CENTERS FOR DISEASE CONTROL AND PREVENTION/National Center for Health Statistics

## Births, Marriages, Divorces, and Deaths for 1995

### Births

According to provisional reports, an estimated 300,000 births occurred in the United States during December 1995. This was a decrease of 4 percent from the provisional number of births reported for December 1994 (314,000). The birth rate, 13.4 live births per 1,000 population, was 5 percent lower than the rate of 14.1 for December 1994. The fertility rate, 59.3 live births per 1,000 women 15–44 years, was 5 percent lower than the comparable rate for December 1994 (62.3). The seasonally adjusted fertility rate (61.6) was also 5 percent lower than the comparable rate for December 1994 (64.8).

An estimated 3,892,000 live births occurred in 1995, a decline of 2 percent

from the 3,979,000 births reported for the previous year. The birth rate of 14.8 was 3 percent lower than the rate of 15.3 for 1994. The fertility rate for 1995 was 65.5, 2 percent lower than the rate for 1994 (67.1). These lower rates continue the generally downward trend in 12-month rates observed since early 1991.

The birth and fertility rates—which increased dramatically in the 1940’s and 1950’s, declined rapidly in the 1960’s and early 1970’s, and increased again in the late 1980’s—have been declining steadily in the 1990’s. The 1995 birth rate is the lowest since 1976 (14.6), while the fertility rate is the lowest since 1986 (65.4). The birth rates in 1995 were lower than in 1994 for 10 months, the same in September and higher in April.

Changes in the annual number of births are affected by two factors—changes in age-specific birth rates and changes in the number and age composition of women in the childbearing ages. According to estimates prepared by the U.S. Bureau of the Census (1), there was less than a 1-percent increase in the number of women in the childbearing ages (15–44 years) between 1994 and 1995, but a 2-percent decrease in the number of women aged 20–29, the peak childbearing years. The 2-percent decline in the fertility rate between 1994 and 1995 is consistent with the aging of the baby-boom women as they move into their forties. The 1995 estimated total fertility rate was 2,020, which indicates the number of births that 1,000 women

### Provisional Vital Statistics for the United States

[Rates for infant deaths are deaths under 1 year per 1,000 live births; fertility rates are live births per 1,000 women aged 15–44 years; all other rates are per 1,000 total population. Data are subject to monthly reporting variation; see [Technical notes](#)]

Item	December				January–December				
	Number		Rate		Number		Rate		
	1995	1994	1995	1994	1995	1994	1995	1994	1993
Live births . . . . .	300,000	314,000	13.4	14.1	3,892,000	3,979,000	14.8	15.3	15.7
Fertility rate . . . . .	...	...	59.3	62.3	...	...	65.5	67.1	68.3
Deaths . . . . .	197,000	190,000	8.8	8.5	2,309,000	2,286,000	8.8	8.8	8.8
Infant deaths . . . . .	2,400	2,500	7.7	7.7	29,300	31,400	7.6	7.9	8.3
Natural increase . . . . .	103,000	124,000	4.6	5.6	1,583,000	1,693,000	6.0	6.5	6.9
Marriages . . . . .	169,000	173,000	7.6	7.8	2,336,000	2,362,000	8.9	9.1	9.0
Divorces . . . . .	92,000	103,000	4.1	4.7	1,169,000	1,191,000	4.4	4.6	4.6
Population base (in millions) . . . . .	...	...	263.8	261.5	...	...	262.8	260.7	257.9

... Category not applicable.

NOTES: Figures include revisions received from the States. Twelve-month figures for the current year reflect revisions received for previous months, and figures for earlier years may differ from those previously published.



U.S. DEPARTMENT OF HEALTH AND HUMAN SERVICES  
Public Health Service  
Centers for Disease Control and Prevention  
National Center for Health Statistics



would have if they experienced a given set of age-specific birth rates during their childbearing years.

**Natural increase**

As a result of natural increase, the excess of births over deaths, an estimated 103,000 people, or 4.6 persons per 1,000 population, were added to the population during December 1995.

For 1995, 1,583,000 persons were added to the population. This represents a rate of natural increase of 6.0, 8 percent lower than the rate of 6.5 for 1994. The decline in the rate of natural increase was due to a decrease in the birth rate and an unchanged death rate.

**Marriages**

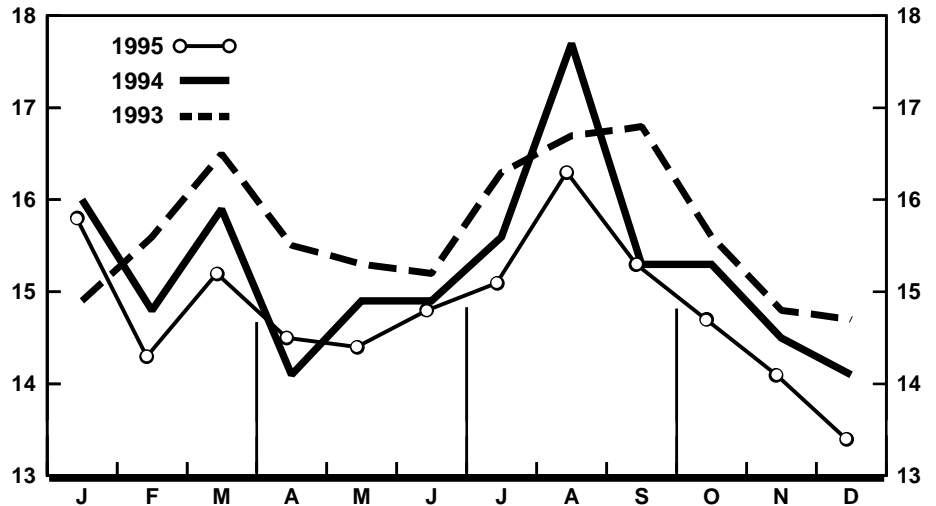
An estimated 169,000 marriages were performed in December 1995, 2 percent fewer than in December 1994 (173,000). The marriage rate per 1,000 population for December was 3 percent lower in 1995 (7.6) than in 1994 (7.8).

The provisional number of marriages for 1995 was 2,336,000, a 1-percent decline compared with the number for 1994 (2,362,000). The marriage rate per 1,000 population for 1995 was 8.9, 2 percent lower than the 1994 marriage rate (9.1). This rate has generally declined since the early 1980's and is currently the lowest rate since 1963 (2).

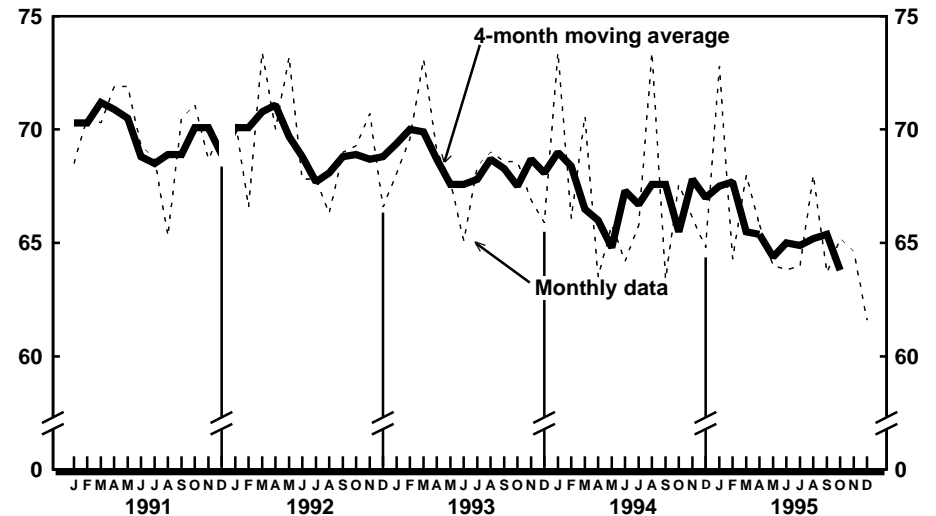
The decline in marriages is also shown by the trends in the marriage rate per 1,000 unmarried women 15 years of age and over and by the marriage rate per 1,000 unmarried women 15-44 years of age. The marriage rate per 1,000 unmarried women 15 years of age and over has dropped steadily since 1990 and was 1 percent lower in 1995 (50.8) than in 1994 (51.5). Similarly, the marriage rate per 1,000 unmarried women 15-44 years of age has declined annually since 1990 and was 1 percent lower in 1995 (83.0) than in 1994 (84.0).

Marriages in 1995 exhibited the typical seasonal pattern with the peak number in June (263,000) and the lowest number in January (111,000). Other months with high numbers of marriage were August (254,000) and May (238,000).

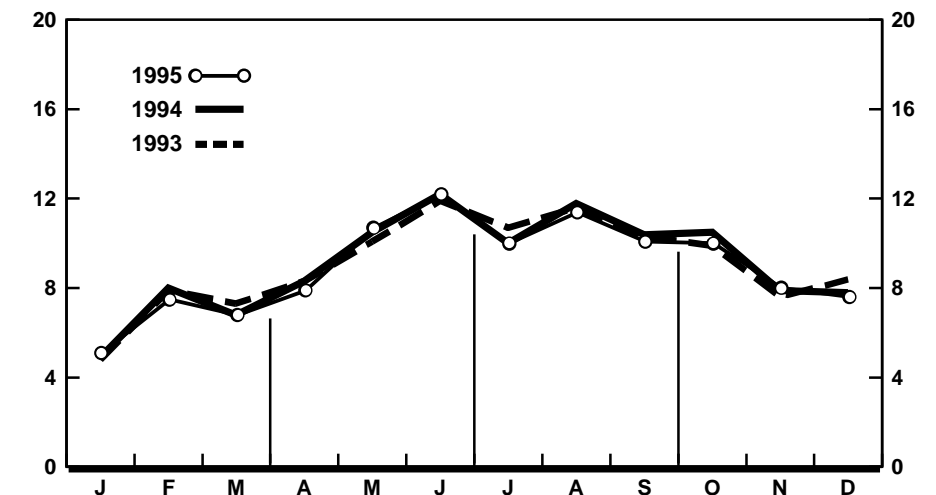
Reflecting the national marriage total at 1 percent less for 1995 than 1994, the



Provisional birth rates per 1,000 population by month: United States, 1993-95



Provisional seasonally adjusted fertility rates per 1,000 women aged 15-44 years: United States, 1991-95



Provisional marriage rates per 1,000 population by month: United States, 1993-95

majority of areas (27 States and the District of Columbia) had lower numbers in 1995 than in 1994. The remaining 23 States had higher numbers of marriages in 1995 than in 1994.

### Divorces

The estimated number of divorces granted in December 1995 was 92,000 compared with 103,000 in December a year earlier. The divorce rate per 1,000 population for December declined from 4.7 in 1994 to 4.1 in 1995.

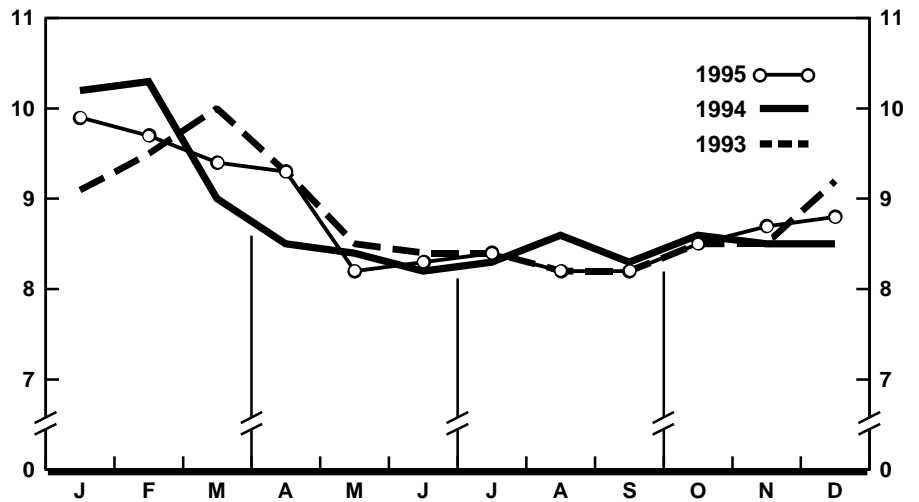
The cumulative number of divorces granted in 1995 was 1,169,000, 2 percent fewer than the number for 1994 (1,191,000). The divorce rate per 1,000 population for 1995 (4.4) was 4 percent lower than the rate for 1994 (4.6) and was the lowest divorce rate in over two decades (3). The divorce rate per 1,000 married women 15 years of age and over was 19.8 in 1995, 3 percent lower than the rate for 1994 (20.5) and the lowest rate since 1974.

The number of divorces granted in 1995 was lower than that granted in 1994 for 27 States and the District of Columbia. However, for 19 States, the number was higher than that granted in 1994. These areas did not provide provisional divorce data in 1995: California, Colorado, Indiana, and Louisiana.

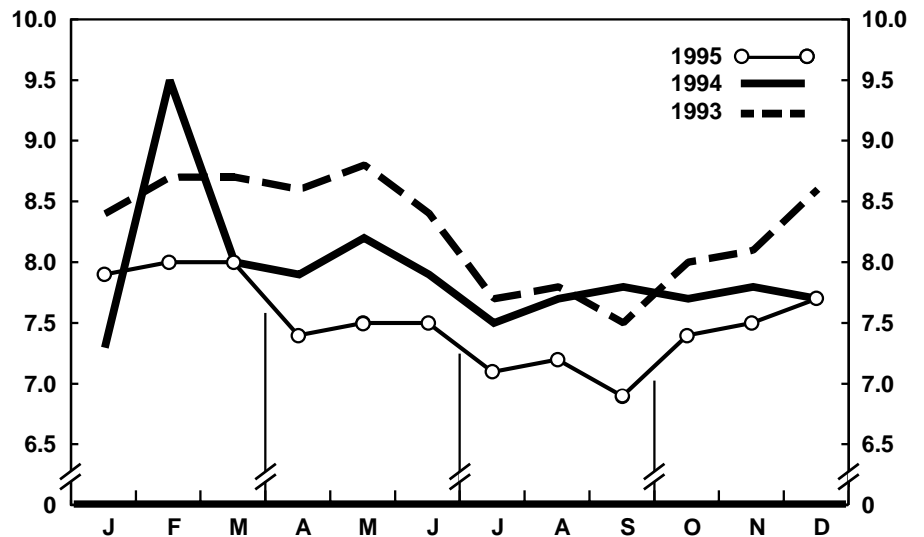
### Deaths

The provisional count of deaths furnished by the 50 States and the District of Columbia during 1995 totaled 2,309,000, about 23,000 more deaths than that reported in the previous year. The death rate of 8.8 per 1,000 population was the same as the rate for 1994. About 29,300 of these deaths were to infants under 1 year of age, yielding an infant mortality rate of 7.6 per 1,000 live births. This rate was 4 percent lower than the rate of 7.9 for 1994.

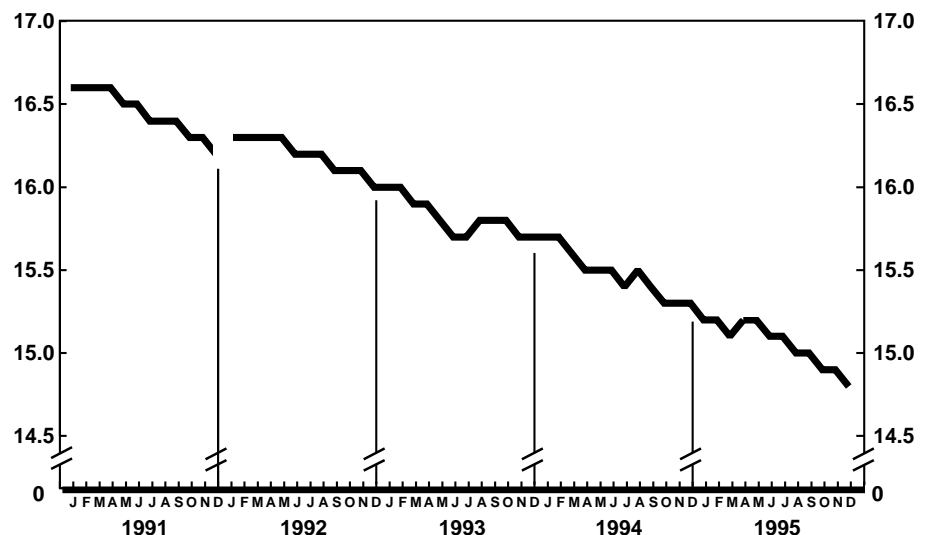
*Current Mortality Sample, 12 months ending with November 1995*—The provisional death rate for the 12 months ending with November 1995 was 876.6 per 100,000 population, 1 percent lower than the rate of 882.4 for the 12-month period ending November 1994. The provisional age-adjusted death rate for the 12-month period ending with November 1995



Provisional death rates per 1,000 population by month: United States, 1993-95



Provisional infant mortality rates per 1,000 live births by month: United States, 1993-95



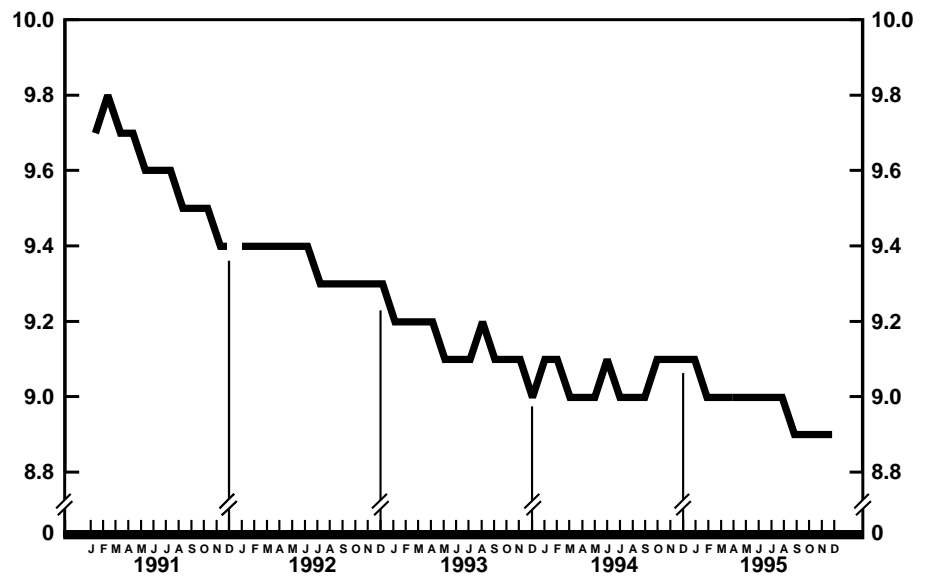
Provisional birth rates per 1,000 population for successive 12-month periods ending with month indicated: United States, 1991-95

was 503.0 per 100,000 U.S. standard million population compared with a rate of 511.7 for the 12-month period ending with November 1994. The age-adjusted death rates control for changes and variations in the age composition of the population; therefore, they are better indicators than crude rates for showing changes in mortality risk over time and for showing differences between race-sex groups within the population. Among the four race-sex groups, the estimated age-adjusted death rates decreased for white males, white females, and black males. By age the death rate for the total population decreased for the age group under 1 year and for the age groups 55–64 years, 65–74 years, and 85 years and over.

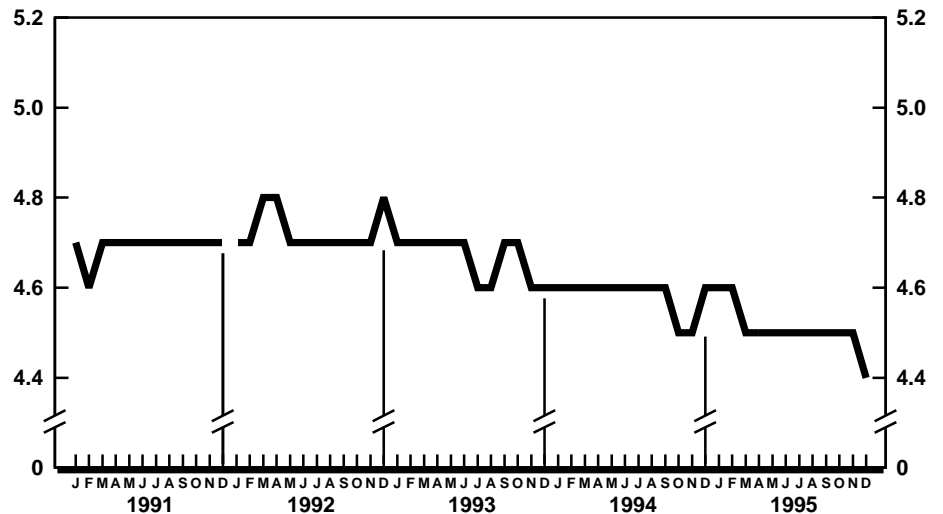
Among the major causes of death, the estimated death rate decreased between the two successive 12-month periods for Diseases of heart, Pneumonia and influenza, and Homicide and legal intervention. The death rate increased for Diabetes mellitis and Human immunodeficiency virus infection.

The death rate for injuries by firearms for the 12 months ending with November 1995 was 13.5 per 100,000 population, 10 percent lower than the rate of 15.0 for the comparable 12-month period a year earlier.

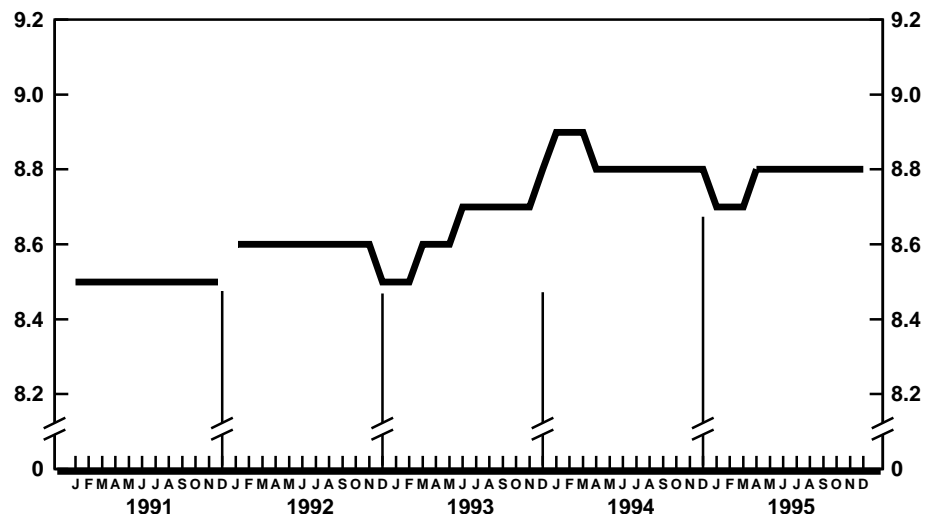
The infant mortality rate for the 12 months ending with November 1995 was 755.2 per 100,000 live births, 6 percent lower than the rate of 798.7 for the same 12-month period a year earlier. For infants under 28 days, the 12-month rate ending November 1995 was 483.4 compared with the rate of 499.8 for the 12-month period a year earlier. The change in the mortality rate for infants under 28 days was not statistically significant. The infant mortality rate for infants 28 days–11 months was 270.2, 10 percent lower than the rate of 298.9 for the 12-month period a year earlier. Among causes of infant death, the infant mortality rate decreased between the two successive 12-month periods for Respiratory distress syndrome and Sudden infant death syndrome.



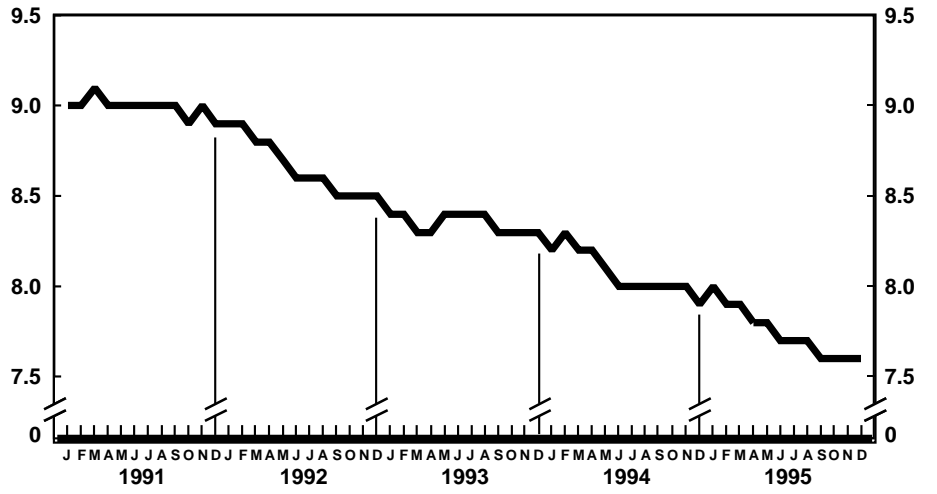
Provisional marriage rates per 1,000 population for successive 12-month periods ending with month indicated: United States, 1991–95



Provisional divorce rates per 1,000 population for successive 12-month periods ending with month indicated: United States, 1991–95



Provisional death rates per 1,000 population for successive 12-month periods ending with month indicated: United States, 1991–95



Provisional infant mortality rates per 1,000 live births for successive 12-month periods ending with month indicated: United States, 1991-95

**Table 1. Provisional number of live births, marriages, divorces, deaths, and infant deaths and rates, by month: United States, January 1994–December 1995**

[Data are provisional and are subject to monthly reporting variation; see [Technical notes](#)]

Period	Live births				Marriages		Divorces		Deaths		Infant deaths	
	Number	Rate per 1,000 women aged 15–44 years			Number	Rate per 1,000 population	Number	Rate per 1,000 population	Number	Rate per 1,000 population	Number	Rate per 1,000 live births
		Rate per 1,000 population	Unadjusted	Seasonally adjusted <sup>1</sup>								
<b>1994:</b>												
January . . . . .	352,000	16.0	69.9	73.4	107,000	4.9	97,000	4.4	224,000	10.2	2,500	7.3
February . . . . .	294,000	14.8	64.8	66.1	156,000	8.0	88,000	4.4	204,000	10.3	2,900	9.5
March . . . . .	350,000	15.9	69.6	70.6	147,000	6.8	103,000	4.7	199,000	9.0	2,700	8.0
April . . . . .	302,000	14.1	62.0	63.5	175,000	8.3	100,000	4.7	182,000	8.5	2,500	7.9
May . . . . .	329,000	14.9	65.3	65.8	232,000	10.5	104,000	4.7	186,000	8.4	2,700	8.2
June . . . . .	319,000	14.9	65.5	64.2	262,000	12.2	103,000	4.8	176,000	8.2	2,500	7.9
July . . . . .	346,000	15.6	68.6	65.8	222,000	10.0	98,000	4.4	184,000	8.3	2,600	7.5
August . . . . .	392,000	17.7	77.7	73.4	262,000	11.8	99,000	4.5	190,000	8.6	2,800	7.7
September . . . . .	329,000	15.3	67.4	63.4	224,000	10.4	99,000	4.6	178,000	8.3	2,500	7.8
October . . . . .	340,000	15.3	67.3	67.6	232,000	10.5	99,000	4.5	190,000	8.6	2,600	7.7
November . . . . .	313,000	14.5	64.1	66.1	171,000	7.9	98,000	4.5	182,000	8.5	2,500	7.8
December . . . . .	314,000	14.1	62.3	64.8	173,000	7.8	103,000	4.7	190,000	8.5	2,500	7.7
<b>1995:</b>												
January . . . . .	350,000	15.8	69.4	72.8	111,000	5.1	96,000	4.3	220,000	9.9	2,700	7.9
February . . . . .	287,000	14.3	63.1	64.3	146,000	7.5	89,000	4.4	194,000	9.7	2,400	8.0
March . . . . .	338,000	15.2	67.1	68.0	148,000	6.8	98,000	4.4	208,000	9.4	2,700	8.0
April . . . . .	313,000	14.5	64.1	65.8	165,000	7.9	98,000	4.6	200,000	9.3	2,300	7.4
May . . . . .	321,000	14.4	63.5	64.0	238,000	10.7	103,000	4.6	184,000	8.2	2,500	7.5
June . . . . .	318,000	14.8	65.2	63.8	263,000	12.2	104,000	4.8	180,000	8.3	2,400	7.5
July . . . . .	337,000	15.1	66.6	64.0	224,000	10.0	97,000	4.4	188,000	8.4	2,400	7.1
August . . . . .	364,000	16.3	72.1	68.0	254,000	11.4	99,000	4.4	184,000	8.2	2,400	7.2
September . . . . .	331,000	15.3	67.6	63.7	219,000	10.1	99,000	4.6	178,000	8.2	2,200	6.9
October . . . . .	328,000	14.7	64.9	65.2	224,000	10.0	98,000	4.4	190,000	8.5	2,500	7.4
November . . . . .	306,000	14.1	62.6	64.6	174,000	8.0	95,000	4.4	188,000	8.7	2,300	7.5
December . . . . .	300,000	13.4	59.3	61.6	169,000	7.6	92,000	4.1	197,000	8.8	2,400	7.7

<sup>1</sup>The method of seasonal adjustment, developed by the U.S. Bureau of the Census, is described in *The X-11 Variant of the Census Method II Seasonal Adjustment Program*, Technical Paper No. 15 (1967 revision).

NOTE: Figures include all revisions received from the States and, therefore, may differ from those previously published.

**Table 2. Provisional number of live births and deaths: Each division and State, December 1994 and 1995, and cumulative figures, 1993–95**

[Data are estimates by State of residence; see [Technical notes](#)]

Area	Live births					Deaths				
	December		January–December			December		January–December		
	1995	1994	1995	1994	1993	1995	1994	1995	1994	1993
New England	9,930	14,763	168,080	175,080	183,678	10,819	10,828	120,461	117,309	120,492
Maine	953	1,179	14,006	14,320	15,027	681	1,158	11,625	11,386	11,479
New Hampshire	1,330	995	15,069	14,605	14,952	975	641	9,244	8,907	8,919
Vermont	485	545	6,780	7,158	7,286	413	338	5,031	4,573	4,868
Massachusetts	3,622	6,460	74,350	83,449	86,317	4,714	5,056	55,965	54,558	56,460
Rhode Island	1,036	1,094	12,695	13,440	14,275	943	874	9,640	9,333	9,709
Connecticut	2,504	4,490	45,180	42,108	45,821	3,093	2,761	28,956	28,552	29,057
Middle Atlantic	42,662	48,421	524,452	553,536	560,516	31,378	30,895	371,192	368,716	369,956
New York	20,164	24,611	264,253	279,187	278,307	13,453	13,763	168,140	167,977	170,203
New Jersey	12,015	12,120	108,445	117,289	123,020	6,617	6,280	74,974	72,575	72,776
Pennsylvania	10,483	11,690	151,754	157,060	159,189	11,308	10,852	128,078	128,164	126,977
East North Central	50,592	50,975	625,045	643,455	645,299	34,857	33,408	395,262	394,562	387,135
Ohio	12,564	13,062	155,568	162,059	156,748	9,382	8,573	105,883	105,603	100,678
Indiana	8,654	7,084	84,188	83,381	84,644	4,772	4,305	52,510	53,290	52,210
Illinois	14,833	15,729	185,442	189,228	191,042	9,897	9,693	108,724	107,611	107,563
Michigan	9,567	9,860	132,783	139,931	143,576	6,849	7,008	83,402	83,312	82,651
Wisconsin	4,974	5,240	67,064	68,856	69,289	3,957	3,829	44,743	44,746	44,033
West North Central	19,414	19,218	253,754	251,531	258,692	16,287	13,908	173,706	169,968	172,679
Minnesota	4,699	5,343	62,752	64,681	63,761	3,199	3,188	37,056	36,417	36,236
Iowa	4,795	2,923	36,399	35,926	37,044	3,006	2,239	25,982	26,352	28,612
Missouri	5,487	5,370	74,946	75,366	77,424	5,355	4,094	58,803	55,985	56,305
North Dakota	782	737	8,719	8,639	8,746	597	463	6,062	6,107	5,925
South Dakota	656	846	10,574	10,615	10,830	531	571	6,862	6,851	6,863
Nebraska	1,905	2,157	23,159	23,032	22,847	1,452	1,393	15,274	14,732	15,401
Kansas	1,090	1,842	37,205	33,272	38,040	2,147	1,960	23,667	23,524	23,337
South Atlantic	53,678	55,288	655,182	661,731	673,147	36,147	35,576	436,204	428,629	423,762
Delaware	737	784	10,013	10,361	10,555	551	505	6,151	6,185	6,116
Maryland	6,126	6,381	72,198	71,553	75,526	3,463	4,896	41,004	40,600	43,087
District of Columbia	594	671	8,769	9,669	9,780	594	634	6,653	6,921	6,713
Virginia	4,760	9,161	89,948	95,865	95,161	4,644	4,552	52,989	53,829	51,773
West Virginia	1,538	1,811	20,954	21,554	22,044	1,685	1,760	19,887	20,221	19,929
North Carolina	8,132	8,113	102,165	101,911	100,597	5,673	5,458	65,132	64,512	62,580
South Carolina	3,326	3,499	49,841	50,907	53,997	2,434	2,334	32,570	31,570	31,404
Georgia	8,184	7,390	113,196	108,908	112,400	4,996	4,324	58,230	56,377	55,851
Florida	20,281	17,478	188,098	191,003	193,087	12,107	11,113	153,588	148,414	146,309
East South Central	15,720	19,922	223,287	231,741	231,361	12,745	12,852	158,391	156,124	154,664
Kentucky	3,501	3,929	51,015	51,926	52,256	2,857	2,857	38,305	37,407	36,921
Tennessee	4,637	6,238	73,892	75,688	73,613	3,816	4,572	50,667	49,645	49,628
Alabama	4,655	4,955	61,182	60,745	63,332	3,649	3,092	42,258	42,138	41,540
Mississippi	2,927	4,800	37,198	43,382	42,160	2,423	2,331	27,161	26,934	26,575
West South Central	36,593	34,684	473,948	470,975	481,374	21,226	17,860	237,622	237,175	234,665
Arkansas	2,805	2,628	34,340	34,571	34,248	2,283	2,079	25,894	26,667	26,371
Louisiana	5,506	5,291	67,376	68,454	69,819	3,240	3,191	39,360	40,418	40,117
Oklahoma	3,074	4,057	45,894	45,682	46,711	2,838	2,686	32,869	32,452	32,574
Texas <sup>1</sup>	25,208	22,708	326,338	322,268	330,596	12,865	9,904	139,499	137,638	135,603
Mountain	16,371	18,931	240,966	243,362	246,110	8,682	9,032	113,825	113,122	108,143
Montana	939	935	11,230	11,032	11,450	673	590	7,624	7,346	7,502
Idaho	1,466	1,350	17,735	17,358	17,162	731	785	8,454	8,552	8,345
Wyoming	454	383	6,293	6,385	6,662	379	287	3,767	3,512	3,544
Colorado	3,598	4,088	49,938	54,144	54,817	1,782	2,174	24,816	24,416	23,722
New Mexico	2,146	2,204	27,142	27,981	27,658	907	1,103	12,440	12,305	11,861
Arizona	2,777	4,847	68,434	66,143	70,770	2,018	2,169	33,650	34,677	32,090
Utah	3,238	3,350	38,870	38,808	36,462	1,029	942	10,839	10,545	10,193
Nevada	1,753	1,774	21,324	21,511	21,129	1,163	982	12,235	11,769	10,886
Pacific	57,873	56,374	713,738	734,658	733,461	24,664	25,799	302,227	300,700	296,347
Washington	5,831	6,027	78,160	79,296	71,437	3,920	4,242	40,639	39,648	41,986
Oregon	2,562	3,186	42,953	42,276	42,195	2,230	1,982	28,011	27,303	27,275
California <sup>1</sup>	47,297	44,756	564,156	581,763	589,685	17,682	18,727	223,588	224,082	217,559
Alaska	645	821	10,081	12,079	10,555	201	243	2,450	2,431	2,247
Hawaii	1,538	1,584	18,388	19,244	19,589	631	605	7,539	7,236	7,280
Puerto Rico <sup>2</sup>	5,615	---	61,774	---	---	2,934	---	29,941	---	---

--- Data not available.

<sup>1</sup>Figures include adjustments for varying lengths of reporting periods; see [Technical notes](#).

<sup>2</sup>Data for Puerto Rico are not included in U.S. total figures.

NOTES: Figures include all revisions received from the States. Cumulative figures for the current year reflect revisions received for previous months, and figures for earlier years may differ from those previously published.

**Table 3. Provisional number of marriages and divorces: Each division and State, December 1994 and 1995, and cumulative figures, 1993–95**

[By State of occurrence. Number of events reported; see [Technical notes](#). Divorces include reported annulments]

Area	Marriages					Divorces				
	December		January–December			December		January–December		
	1995	1994	1995	1994	1993	1995	1994	1995	1994	1993
New England	6,048	6,445	99,453	105,080	93,919	3,442	3,613	39,828	39,646	42,645
Maine	387	948	10,757	10,872	10,899	592	536	5,467	5,433	5,282
New Hampshire	665	575	9,631	9,818	9,611	289	409	4,871	5,041	5,035
Vermont	291	390	6,051	5,831	6,027	220	173	2,786	2,316	2,766
Massachusetts	2,496	2,976	43,593	49,695	37,468	1,407	1,595	13,453	14,530	16,002
Rhode Island	480	349	7,385	6,976	7,123	286	270	3,654	3,231	3,361
Connecticut	1,729	1,207	22,036	21,888	22,791	648	630	9,597	9,095	10,199
Middle Atlantic	21,094	15,611	276,090	277,903	281,547	9,253	12,794	119,731	123,134	121,352
New York <sup>1</sup>	12,490	7,572	147,405	149,615	151,477	3,967	6,892	55,999	59,195	56,729
New Jersey	3,300	3,452	52,882	52,776	53,391	1,879	2,014	24,293	23,899	24,784
Pennsylvania	5,304	4,587	75,803	75,512	76,679	3,407	3,888	39,439	40,040	39,839
East North Central	20,779	23,624	331,032	342,917	337,935	<sup>2</sup> 12,220	<sup>2</sup> 13,722	<sup>2</sup> 144,898	<sup>2</sup> 149,571	<sup>2</sup> 151,515
Ohio	5,864	7,197	90,125	92,797	88,864	4,270	4,530	48,682	49,968	51,243
Indiana	3,764	3,968	50,426	50,282	49,764	---	---	---	---	---
Illinois	5,733	6,730	83,218	92,719	91,579	3,140	4,723	38,784	43,398	43,228
Michigan	3,926	4,047	70,963	70,751	71,222	3,305	2,814	39,910	38,727	39,183
Wisconsin	1,492	1,682	36,300	36,368	36,506	1,505	1,655	17,522	17,478	17,861
West North Central	8,528	8,773	145,821	144,968	146,416	6,255	6,486	75,256	77,334	77,825
Minnesota	1,600	1,668	32,782	32,510	31,444	1,520	1,685	15,828	16,217	16,848
Iowa	1,077	1,406	22,049	22,732	25,006	914	744	10,504	10,930	10,903
Missouri	2,835	3,161	44,879	44,223	44,133	2,629	1,597	26,844	26,324	26,582
North Dakota	272	260	4,597	4,791	4,892	178	212	2,204	2,201	2,233
South Dakota	417	400	7,281	7,451	7,427	267	270	2,888	3,022	2,890
Nebraska	630	737	12,125	12,347	12,397	456	602	6,256	6,547	6,334
Kansas	1,697	1,141	22,108	20,914	21,117	291	1,376	10,732	12,093	12,035
South Atlantic	32,662	35,397	442,896	442,502	435,994	19,890	21,389	227,312	233,820	233,149
Delaware	364	348	5,355	5,066	5,015	283	221	3,671	3,385	3,120
Maryland	3,509	3,668	42,808	43,385	42,323	1,922	1,883	15,025	17,439	16,968
District of Columbia	890	1,023	3,535	3,616	3,029	227	198	1,858	2,244	1,941
Virginia	4,772	5,132	67,938	69,256	68,411	2,825	3,140	28,897	30,016	29,463
West Virginia	676	1,134	11,205	10,946	13,056	1,094	885	9,393	9,179	9,690
North Carolina	4,456	4,852	61,644	51,934	47,099	2,770	2,593	36,978	36,292	34,927
South Carolina	3,687	3,290	44,619	50,872	52,547	1,145	1,187	14,753	15,301	15,110
Georgia	3,800	5,342	61,451	62,879	61,577	3,366	2,776	37,209	37,001	38,349
Florida	10,508	10,608	144,341	144,548	142,937	6,258	8,506	79,528	82,963	83,581
East South Central	16,351	17,961	193,445	189,891	181,726	6,753	7,461	94,997	97,706	95,346
Kentucky	4,166	3,712	47,576	47,322	45,544	1,799	1,459	22,883	22,211	21,840
Tennessee	6,378	8,828	82,335	80,030	73,052	1,857	2,718	33,081	34,167	33,199
Alabama	3,689	3,661	42,006	40,179	39,476	1,838	1,608	25,957	26,116	27,047
Mississippi	2,118	1,760	21,528	22,360	23,654	1,259	1,676	13,076	15,212	13,260
West South Central	23,084	24,412	294,534	299,488	288,756	<sup>2</sup> 9,680	<sup>2</sup> 9,133	<sup>2</sup> 136,243	<sup>2</sup> 138,386	<sup>2</sup> 138,168
Arkansas	3,590	3,019	36,626	38,169	36,440	1,405	1,151	16,041	17,458	16,734
Louisiana	3,708	2,851	40,840	41,750	36,179	---	---	---	---	---
Oklahoma	2,485	2,488	28,546	29,297	30,495	1,638	1,934	21,829	21,855	22,784
Texas <sup>3</sup>	13,301	16,054	188,522	190,272	185,642	6,637	6,048	98,373	99,073	98,650
Mountain	20,698	20,793	272,039	270,841	254,803	<sup>2</sup> 5,260	7,663	<sup>2</sup> 74,305	88,761	<sup>2</sup> 76,806
Montana	353	382	6,645	6,895	7,019	363	367	4,179	4,153	4,320
Idaho	951	1,142	15,479	15,234	13,966	547	573	6,770	7,075	6,928
Wyoming	548	372	5,153	4,825	4,603	244	262	3,197	3,071	3,065
Colorado	2,361	2,354	34,295	34,367	34,036	---	1,471	---	18,795	19,138
New Mexico <sup>4,5</sup>	1,168	838	15,094	12,159	12,618	781	835	11,279	9,882	9,944
Arizona <sup>1</sup>	3,286	3,370	38,949	36,711	38,789	2,215	2,365	27,633	23,725	24,523
Utah	1,244	1,423	21,639	20,325	20,588	660	601	8,892	8,999	8,888
Nevada	10,787	10,912	134,785	140,325	123,184	450	1,189	12,355	13,061	---
Pacific	24,595	22,517	291,548	295,057	294,621	<sup>2</sup> 3,906	<sup>2</sup> 4,731	<sup>2</sup> 53,152	<sup>2</sup> 54,616	<sup>2</sup> 51,454
Washington	2,586	4,772	42,030	43,557	43,393	1,793	2,300	29,677	29,976	27,415
Oregon	1,460	1,675	25,688	25,186	24,322	1,269	1,463	14,982	16,307	15,970
California	18,703	14,197	199,609	202,827	203,897	---	---	---	---	---
Alaska	373	505	5,461	5,560	5,515	252	303	2,999	3,354	3,193
Hawaii	1,473	1,368	18,760	17,927	17,494	592	665	5,494	4,979	4,876
Puerto Rico <sup>5</sup>	4,276	---	32,392	---	---	---	---	---	---	---

--- Data not available.

<sup>1</sup>Figures for marriages are marriage licenses issued for some counties.

<sup>2</sup>Excludes figures for State(s) shown below as not available.

<sup>3</sup>Figures include adjustments for varying lengths of reporting periods; see [Technical notes](#).

<sup>4</sup>Figures for marriages are marriage licenses issued.

<sup>5</sup>Figures for divorces include estimates for some counties.

<sup>6</sup>Data for Puerto Rico are not included in U.S. total figures.

NOTES: Figures include all revisions received from the States. Cumulative figures for the current year reflect revisions received for previous months, and figures for earlier years may differ from those previously published.



**Table 4. Provisional number of deaths under 1 year and infant mortality rates: Each division and State, 12 months ending with December 1994 and 1995**

[Data are estimates by State of residence; see [Technical notes](#). Infant mortality rates are deaths under 1 year per 1,000 live births in specified area]

Area	12 months ending with December			
	1995		1994	
	Number	Rate	Number	Rate
New England . . . . .	952	5.7	1,005	5.7
Maine . . . . .	75	5.4	90	6.3
New Hampshire . . . . .	73	4.8	96	6.6
Vermont . . . . .	39	5.8	48	6.7
Massachusetts . . . . .	407	5.5	473	5.7
Rhode Island . . . . .	87	6.9	81	6.0
Connecticut . . . . .	271	6.0	217	5.2
Middle Atlantic . . . . .	4,006	7.6	4,335	7.8
New York . . . . .	2,067	7.8	2,214	7.9
New Jersey . . . . .	790	7.3	923	7.9
Pennsylvania . . . . .	1,149	7.6	1,198	7.6
East North Central . . . . .	5,355	8.6	5,705	8.9
Ohio . . . . .	1,310	8.4	1,435	8.9
Indiana . . . . .	756	9.0	793	9.5
Illinois . . . . .	1,662	9.0	1,725	9.1
Michigan . . . . .	1,129	8.5	1,200	8.6
Wisconsin . . . . .	498	7.4	552	8.0
West North Central . . . . .	1,845	7.3	1,948	7.7
Minnesota . . . . .	401	6.4	435	6.7
Iowa . . . . .	240	6.6	253	7.0
Missouri . . . . .	591	7.9	607	8.1
North Dakota . . . . .	49	5.6	54	6.3
South Dakota . . . . .	98	9.3	125	11.8
Nebraska . . . . .	178	7.7	181	7.9
Kansas . . . . .	288	7.7	293	8.8
South Atlantic . . . . .	5,625	8.6	5,899	8.9
Delaware . . . . .	72	7.2	73	7.0
Maryland . . . . .	629	8.7	638	8.9
District of Columbia . . . . .	1,159	---	194	20.1
Virginia . . . . .	688	7.6	766	8.0
West Virginia . . . . .	151	7.2	146	6.8
North Carolina . . . . .	952	9.3	1,019	10.0
South Carolina . . . . .	448	9.0	453	8.9
Georgia . . . . .	1,110	9.8	1,057	9.7
Florida . . . . .	1,416	7.5	1,553	8.1
East South Central . . . . .	2,136	9.6	2,109	9.1
Kentucky . . . . .	409	8.0	401	7.7
Tennessee . . . . .	709	9.6	668	8.8
Alabama . . . . .	624	10.2	601	9.9
Mississippi . . . . .	394	10.6	439	10.1
West South Central . . . . .	3,501	7.4	3,672	7.8
Arkansas . . . . .	298	8.7	276	8.0
Louisiana . . . . .	645	9.6	652	9.5
Oklahoma . . . . .	408	8.9	430	9.4
Texas <sup>2</sup> . . . . .	2,150	6.6	2,314	7.2
Mountain . . . . .	1,637	6.8	1,811	7.4
Montana . . . . .	84	7.5	91	8.2
Idaho . . . . .	114	6.4	127	7.3
Wyoming . . . . .	56	8.9	51	8.0
Colorado . . . . .	356	7.1	358	6.6
New Mexico . . . . .	191	7.0	250	8.9
Arizona . . . . .	509	7.4	567	8.6
Utah . . . . .	200	5.1	233	6.0
Nevada . . . . .	127	6.0	134	6.2
Pacific . . . . .	4,249	6.0	4,807	6.5
Washington . . . . .	367	4.7	432	5.4
Oregon . . . . .	263	6.1	294	7.0
California <sup>2</sup> . . . . .	3,441	6.1	3,884	6.7
Alaska . . . . .	68	6.7	71	5.9
Hawaii . . . . .	110	6.0	126	6.5
Puerto Rico <sup>3</sup> . . . . .	---	---	---	---

--- Data not available.

<sup>1</sup>Infant deaths are underreported.

<sup>2</sup>Figures include adjustments for varying lengths of reporting periods; see [Technical notes](#).

<sup>3</sup>Data for Puerto Rico are not included in U.S. total figures.

NOTES: Figures include all revisions received from the States. Figures for the current year reflect revisions received for previous months, and figures for earlier years may differ from those previously published.

**Table 5. Provisional number of deaths and death rates, by age, race, and sex, and age-adjusted death rates by race and sex: United States, November 1994 and 1995, cumulative figures 1994 and 1995, and 12 months ending with November 1994 and 1995—Con.**

[Data are provisional, estimated from a 10-percent sample of deaths. Age-specific rates on an annual basis per 100,000 population in specified group; age-adjusted rates per 100,000 U.S. standard million population; see [Technical notes](#). Because of rounding of estimates, figures may not add to totals. For method of computation and information on standard errors of the estimates, see [Technical notes](#)]

Age, race, and sex	November				January–November				12 months ending with November							
	1995		1994		1995		1994		1995		1994					
	Number	Rate	Number	Rate	Number	Rate	Number	Rate	Number	Rate	Number	Rate				
All races, both sexes <sup>1</sup>																
All ages . . . . .	188,000	866.7	182,000	845.3	2,112,000	879.0	2,096,000	879.5	2,302,000	876.6	2,298,000	882.4				
Under 1 year. . . . .	} 3,680	77.5	3,570	75.5	26,900	<sup>2</sup> 763.6	28,900	<sup>2</sup> 803.9	29,400	<sup>2</sup> 762.9	31,700	<sup>2</sup> 805.8				
1–4 years . . . . .					6,250	43.3	6,640	45.7	6,790	43.1	7,140	44.9				
5–14 years . . . . .					7,430	21.3	7,770	22.6	8,210	21.6	8,530	22.7				
15–24 years . . . . .					2,910	98.5	3,010	101.9	31,890	97.0	32,760	99.5	35,030	97.5	35,480	98.6
25–34 years . . . . .					4,790	143.3	4,940	146.0	53,800	143.8	53,600	141.4	58,680	143.5	59,150	142.7
35–44 years . . . . .	8,530	242.6	8,160	236.6	93,910	241.8	92,640	243.1	101,710	239.6	101,150	242.8				
45–54 years . . . . .	11,550	444.7	11,140	446.9	131,540	463.5	124,260	455.4	143,050	461.8	136,150	457.0				
55–64 years . . . . .	18,980	1,089.5	19,110	1,104.6	214,860	1,111.6	220,610	1,147.0	234,040	1,108.1	241,490	1,148.9				
65–74 years . . . . .	37,660	2,442.5	37,240	2,418.1	438,970	2,558.2	445,300	2,599.1	478,230	2,550.3	488,410	2,608.2				
75–84 years . . . . .	53,220	5,758.2	51,830	5,732.2	596,380	5,857.7	589,920	5,882.1	651,270	5,855.2	647,220	5,898.8				
85 years and over. . . . .	45,880	15,210.0	42,680	14,574.0	508,540	15,350.5	493,490	15,529.5	553,730	15,292.2	541,430	15,625.7				
Not stated . . . . .	70	...	110	...	950	...	620	...	990	...	680	...				
Age-adjusted rate <sup>3</sup> . . . . .	...	493.1	...	490.8	...	504.3	...	510.4	...	503.0	...	511.7				
All races, male <sup>1</sup>																
All ages . . . . .	95,360	901.0	91,110	869.1	1,073,400	914.9	1,071,070	920.7	1,168,910	911.8	1,174,670	923.7				
Under 1 year. . . . .	} 1,990	81.8	1,890	78.1	14,790	<sup>2</sup> 821.5	16,240	<sup>2</sup> 883.8	16,270	<sup>2</sup> 825.5	17,850	<sup>2</sup> 887.6				
1–4 years . . . . .					3,570	48.6	3,930	52.9	3,880	48.1	4,210	51.8				
5–14 years . . . . .					4,550	25.5	4,600	26.2	4,990	25.6	5,020	26.1				
15–24 years . . . . .					2,350	155.8	2,370	157.1	24,440	145.7	25,210	149.9	26,870	146.5	27,260	148.3
25–34 years . . . . .					3,400	203.6	3,590	212.2	39,120	209.2	39,060	206.1	42,730	209.1	43,280	208.8
35–44 years . . . . .	5,950	341.1	5,600	327.5	65,000	337.3	64,650	342.0	70,350	334.1	70,660	341.9				
45–54 years . . . . .	7,290	574.5	7,060	579.8	83,110	599.3	78,320	587.2	90,300	596.7	85,850	589.5				
55–64 years . . . . .	11,490	1,387.0	11,550	1,405.4	128,870	1,403.0	135,100	1,478.7	140,300	1,398.0	147,640	1,478.3				
65–74 years . . . . .	21,810	3,178.3	20,850	3,052.6	251,170	3,294.5	255,260	3,365.9	273,070	3,277.8	279,640	3,374.0				
75–84 years . . . . .	25,910	7,189.0	24,290	6,958.5	292,430	7,406.6	287,670	7,466.3	319,050	7,399.1	316,260	7,505.0				
85 years and over. . . . .	15,110	17,848.4	13,840	16,957.4	165,720	17,893.6	160,620	17,945.5	180,470	17,833.0	176,590	18,056.2				
Not stated . . . . .	60	...	70	...	620	...	400	...	640	...	420	...				
Age-adjusted rate <sup>3</sup> . . . . .	...	635.1	...	623.1	...	648.0	...	659.5	...	645.9	...	661.2				
All races, female <sup>1</sup>																
All ages . . . . .	91,910	829.0	90,670	824.9	1,037,960	844.2	1,025,410	841.0	1,132,160	842.6	1,123,870	843.4				
Under 1 year. . . . .	} 1,680	72.5	1,680	72.8	12,030	<sup>2</sup> 700.5	12,620	<sup>2</sup> 718.1	13,070	<sup>2</sup> 695.2	13,840	<sup>2</sup> 719.0				
1–4 years . . . . .					2,680	38.0	2,710	38.3	2,910	37.8	2,930	37.7				
5–14 years . . . . .					2,890	17.1	3,170	19.0	3,230	17.4	3,520	19.2				
15–24 years . . . . .					560	38.7	630	43.6	7,450	46.3	7,550	46.8	8,160	46.4	8,220	46.7
25–34 years . . . . .					1,390	83.1	1,350	79.8	14,680	78.5	14,540	76.7	15,950	78.0	15,870	76.6
35–44 years . . . . .	2,580	145.6	2,560	147.2	28,910	147.7	27,990	145.7	31,360	146.5	30,490	145.2				
45–54 years . . . . .	4,260	320.7	4,080	319.9	48,430	333.6	45,950	329.4	52,750	332.9	50,300	330.2				
55–64 years . . . . .	7,500	821.0	7,570	833.5	85,990	847.9	85,500	846.9	93,740	845.7	93,850	850.7				
65–74 years . . . . .	15,850	1,852.6	16,380	1,911.5	187,790	1,969.5	190,040	1,990.3	205,160	1,968.9	208,780	2,000.4				
75–84 years . . . . .	27,310	4,842.9	27,540	4,961.1	303,950	4,876.5	302,260	4,894.2	332,230	4,878.6	330,970	4,897.5				
85 years and over. . . . .	30,770	14,180.6	28,840	13,658.5	342,820	14,361.8	332,860	14,578.3	373,260	14,312.1	364,840	14,669.9				
Not stated . . . . .	10	...	40	...	330	...	220	...	350	...	260	...				
Age-adjusted rate <sup>3</sup> . . . . .	...	374.4	...	379.3	...	384.7	...	386.2	...	384.1	...	387.3				
White																
All ages . . . . .	160,190	891.3	156,660	877.9	1,812,900	909.0	1,801,830	910.0	1,976,420	906.9	1,976,250	913.3				
Under 1 year. . . . .	} 2,490	66.2	2,310	61.6	17,760	<sup>2</sup> 646.0	18,680	<sup>2</sup> 662.6	19,420	<sup>2</sup> 643.9	20,520	<sup>2</sup> 665.8				
1–4 years . . . . .					4,300	37.8	4,430	38.4	4,630	37.2	4,790	38.1				
5–14 years . . . . .					5,460	19.7	5,510	20.2	5,970	19.7	6,070	20.3				
15–24 years . . . . .					2,140	90.8	1,900	80.4	22,620	86.2	23,150	88.0	24,690	86.1	25,010	87.0
25–34 years . . . . .					3,040	111.5	3,580	129.2	37,640	123.0	37,760	121.7	41,220	123.4	41,790	123.2
35–44 years . . . . .	5,950	203.2	5,890	204.9	66,600	205.8	65,820	207.2	72,220	204.2	71,940	207.2				
45–54 years . . . . .	8,730	393.3	8,590	402.3	100,900	415.6	95,540	408.7	109,720	414.1	104,540	409.5				
55–64 years . . . . .	15,440	1,026.2	15,770	1,053.1	174,220	1,042.7	180,260	1,082.0	189,840	1,039.9	197,350	1,084.0				
65–74 years . . . . .	32,730	2,394.5	32,250	2,357.6	378,800	2,488.0	385,130	2,530.0	412,960	2,482.2	422,370	2,539.0				
75–84 years . . . . .	47,840	5,708.1	46,960	5,726.6	536,200	5,808.1	530,780	5,840.2	585,820	5,808.2	582,670	5,861.3				
85 years and over. . . . .	41,750	15,203.8	39,310	14,729.6	467,650	15,510.4	454,370	15,665.3	509,140	15,456.6	498,750	15,758.3				
Not stated . . . . .	70	...	90	...	750	...	410	...	770	...	450	...				
Age-adjusted rate <sup>3</sup> . . . . .	...	464.3	...	464.7	...	476.6	...	482.6	...	475.5	...	484.1				

See [footnotes](#) at end of table.

**Table 5. Provisional number of deaths and death rates, by age, race, and sex, and age-adjusted death rates by race and sex: United States, November 1994 and 1995, cumulative figures 1994 and 1995, and 12 months ending with November 1994 and 1995—Con.**

[Data are provisional, estimated from a 10-percent sample of deaths. Age-specific rates on an annual basis per 100,000 population in specified group; age-adjusted rates per 100,000 U.S. standard million population; see Technical notes. Because of rounding of estimates, figures may not add to totals. For method of computation and information on standard errors of the estimates, see Technical notes]

Age, race, and sex	November				January–November				12 months ending with November			
	1995		1994		1995		1994		1995		1994	
	Number	Rate	Number	Rate	Number	Rate	Number	Rate	Number	Rate	Number	Rate
<b>White male</b>												
All ages. . . . .	80,190	909.2	77,380	884.3	911,580	931.8	909,410	936.6	992,930	928.8	997,870	940.3
Under 1 year. . . . .					9,940	<sup>2</sup> 704.4	10,350	<sup>2</sup> 717.7	10,930	<sup>2</sup> 706.5	11,410	<sup>2</sup> 723.1
1–4 years . . . . .	} 1,330	68.9	1,200	62.4	2,600	44.5	2,630	44.7	2,800	43.9	2,860	44.4
5–14 years . . . . .					3,330	23.4	3,230	22.9	3,610	23.3	3,550	23.2
15–24 years . . . . .	1,680	139.0	1,450	119.7	17,090	126.9	17,510	129.6	18,700	127.1	18,880	128.0
25–34 years . . . . .	2,190	159.1	2,650	189.4	27,920	180.9	28,020	178.7	30,540	181.0	31,060	181.2
35–44 years . . . . .	4,150	282.6	4,100	284.5	46,710	288.0	46,560	292.1	50,620	285.5	50,960	292.7
45–54 years . . . . .	5,560	507.2	5,430	515.2	64,240	536.1	60,690	525.9	69,810	533.6	66,470	527.3
55–64 years . . . . .	9,450	1,306.1	9,660	1,342.9	105,940	1,319.2	111,560	1,394.0	115,350	1,314.8	121,850	1,393.4
65–74 years . . . . .	18,790	3,066.1	18,320	2,998.3	218,210	3,202.6	222,320	3,277.1	237,440	3,188.8	243,490	3,285.1
75–84 years . . . . .	23,440	7,147.5	21,920	6,903.8	264,420	7,360.9	259,570	7,414.8	288,590	7,354.5	285,620	7,461.3
85 years and over. . . . .	13,540	17,694.6	12,590	17,057.7	150,660	18,023.7	146,700	18,130.7	164,000	17,962.8	161,440	18,241.8
Not stated . . . . .	60	...	60	...	520	...	270	...	540	...	290	...
Age-adjusted rate <sup>3</sup> . . . . .	...	592.8	...	587.2	...	611.6	...	622.1	...	609.7	...	624.0
<b>White female</b>												
All ages. . . . .	80,000	873.9	79,270	871.7	901,310	887.1	892,420	884.5	983,490	885.7	978,380	887.3
Under 1 year. . . . .					7,820	<sup>2</sup> 582.9	8,330	<sup>2</sup> 606.3	8,490	<sup>2</sup> 577.9	9,110	<sup>2</sup> 605.7
1–4 years . . . . .	} 1,160	63.4	1,110	60.8	1,700	30.6	1,790	31.8	1,830	30.2	1,930	31.5
5–14 years . . . . .					2,130	15.7	2,280	17.1	2,370	16.1	2,520	17.3
15–24 years . . . . .	460	40.1	450	39.1	5,530	43.2	5,640	44.0	5,980	42.8	6,130	43.8
25–34 years . . . . .	850	63.0	930	67.8	9,720	64.2	9,750	63.5	10,680	64.6	10,720	63.9
35–44 years . . . . .	1,810	124.0	1,790	124.8	19,890	123.3	19,260	121.6	21,600	122.5	20,980	121.2
45–54 years . . . . .	3,170	282.2	3,160	292.2	36,650	298.4	34,860	294.4	39,910	297.5	38,080	294.6
55–64 years . . . . .	5,990	766.9	6,110	785.2	68,290	786.8	68,700	793.7	74,490	785.5	75,500	798.1
65–74 years . . . . .	13,930	1,847.4	13,930	1,840.4	160,590	1,909.2	162,820	1,929.4	175,520	1,909.7	178,890	1,939.6
75–84 years . . . . .	24,400	4,782.8	25,050	4,984.9	271,790	4,819.0	271,200	4,853.9	297,240	4,823.8	297,060	4,859.5
85 years and over. . . . .	28,210	14,241.6	26,720	13,839.6	316,990	14,546.4	307,660	14,712.5	345,150	14,496.0	337,310	14,794.3
Not stated . . . . .	10	...	30	...	230	...	140	...	230	...	160	...
Age-adjusted rate <sup>3</sup> . . . . .	...	356.4	...	360.9	...	363.5	...	366.1	...	363.1	...	367.2
<b>Black</b>												
All ages. . . . .	24,030	877.6	22,510	833.6	263,530	869.7	260,880	873.6	286,160	864.2	285,220	873.9
Under 1 year. . . . .					8,230	<sup>2</sup> 1,441.4	9,050	<sup>2</sup> 1,564.2	9,030	<sup>2</sup> 1,444.8	9,930	<sup>2</sup> 1,558.9
1–4 years . . . . .	} 1,120	151.0	1,090	148.1	1,720	75.2	1,870	81.0	1,900	76.4	1,980	78.8
5–14 years . . . . .					1,650	30.2	1,840	34.6	1,850	31.4	2,010	34.7
15–24 years . . . . .	650	144.5	1,040	233.5	7,960	159.5	8,460	171.1	8,830	162.0	9,240	171.3
25–34 years . . . . .	1,580	355.4	1,230	274.7	14,680	296.2	14,060	281.7	15,770	290.8	15,400	282.4
35–44 years . . . . .	2,410	560.6	2,060	491.9	24,990	527.7	24,680	536.7	26,980	521.3	26,820	533.7
45–54 years . . . . .	2,510	923.4	2,330	904.3	27,220	921.7	25,540	909.2	29,570	917.2	28,110	916.8
55–64 years . . . . .	3,110	1,769.8	3,060	1,768.6	35,770	1,840.5	35,480	1,856.1	38,840	1,829.5	38,770	1,856.8
65–74 years . . . . .	4,280	3,208.5	4,500	3,411.2	53,030	3,590.6	53,440	3,644.9	57,430	3,558.2	58,670	3,657.7
75–84 years . . . . .	4,740	6,914.9	4,310	6,387.1	52,380	6,920.5	52,070	6,915.9	56,890	6,879.1	56,700	6,881.1
85 years and over. . . . .	3,630	15,829.7	2,870	12,932.7	35,730	14,222.9	34,200	14,979.6	38,860	14,182.5	37,370	15,191.1
Not stated . . . . .	—	...	20	...	180	...	190	...	200	...	210	...
Age-adjusted rate <sup>3</sup> . . . . .	...	766.2	...	748.9	...	772.0	...	780.4	...	767.2	...	781.5
<b>Black male</b>												
All ages. . . . .	13,520	1,040.8	12,280	959.0	141,920	987.4	142,180	1,003.7	154,020	980.7	155,280	1,002.8
Under 1 year. . . . .					4,310	<sup>2</sup> 1,482.5	5,310	<sup>2</sup> 1,809.7	4,760	<sup>2</sup> 1,501.6	5,800	<sup>2</sup> 1,795.7
1–4 years . . . . .	} 620	164.9	610	163.4	870	75.4	1,030	89.4	960	76.1	1,080	84.8
5–14 years . . . . .					1,070	39.1	1,130	42.4	1,190	39.8	1,200	40.9
15–24 years . . . . .	570	253.3	860	386.5	6,340	254.8	6,760	274.4	7,030	258.2	7,390	274.2
25–34 years . . . . .	1,110	527.5	830	392.0	10,190	433.6	9,770	413.6	11,020	429.6	10,790	418.1
35–44 years . . . . .	1,700	847.3	1,360	696.4	16,710	755.3	16,670	776.5	18,010	745.8	18,100	772.2
45–54 years . . . . .	1,540	1,249.9	1,520	1,302.3	16,910	1,261.4	15,740	1,234.1	18,360	1,256.7	17,290	1,243.9
55–64 years . . . . .	1,870	2,446.4	1,710	2,273.8	20,270	2,401.4	20,740	2,491.3	21,980	2,383.9	22,680	2,492.3
65–74 years . . . . .	2,610	4,690.5	2,260	4,122.4	28,680	4,664.5	29,100	4,785.1	31,000	4,613.1	31,920	4,800.0
75–84 years . . . . .	2,170	8,656.3	2,090	8,561.7	24,070	8,740.9	24,240	8,942.9	26,140	8,684.4	26,310	8,858.6
85 years and over. . . . .	1,340	20,127.6	1,030	16,066.2	12,420	17,075.1	11,560	17,410.0	13,490	17,075.9	12,580	17,718.3
Not stated . . . . .	—	...	10	...	90	...	120	...	90	...	120	...
Age-adjusted rate <sup>3</sup> . . . . .	...	1,063.7	...	995.3	...	1,021.9	...	1,045.9	...	1,015.5	...	1,046.6

See footnotes at end of table.

**Table 5. Provisional number of deaths and death rates, by age, race, and sex, and age-adjusted death rates by race and sex: United States, November 1994 and 1995, cumulative figures 1994 and 1995, and 12 months ending with November 1994 and 1995—Con.**

[Data are provisional, estimated from a 10-percent sample of deaths. Age-specific rates on an annual basis per 100,000 population in specified group; age-adjusted rates per 100,000 U.S. standard million population; see Technical notes. Because of rounding of estimates, figures may not add to totals. For method of computation and information on standard errors of the estimates, see Technical notes]

Age, race, and sex	November				January–November				12 months ending with November			
	1995		1994		1995		1994		1995		1994	
	Number	Rate	Number	Rate	Number	Rate	Number	Rate	Number	Rate	Number	Rate
<b>Black female</b>												
All ages . . . . .	10,500	729.7	10,230	720.6	121,620	763.5	118,700	756.3	132,130	759.0	129,940	757.6
Under 1 year . . . . .	} 490	134.1	480	132.3	3,920	<sup>2</sup> 1,392.2	3,730	<sup>2</sup> 1,311.7	4,270	<sup>2</sup> 1,386.4	4,130	<sup>2</sup> 1,315.3
1–4 years . . . . .					860	76.7	840	75.1	950	77.5	900	72.6
5–14 years . . . . .					580	21.8	710	27.2	660	22.7	810	28.4
15–24 years . . . . .					80	*	180	80.7	1,620	65.4	1,700	68.4
25–34 years . . . . .	460	196.5	400	169.5	4,490	172.0	4,280	162.8	4,750	166.2	4,620	160.8
35–44 years . . . . .	710	309.7	700	313.2	8,280	328.2	8,010	327.1	8,970	324.9	8,720	325.3
45–54 years . . . . .	970	652.7	810	574.6	10,310	637.6	9,800	637.8	11,210	635.8	10,820	645.6
55–64 years . . . . .	1,240	1,248.9	1,350	1,380.2	15,500	1,410.4	14,730	1,365.5	16,860	1,403.8	16,090	1,365.9
65–74 years . . . . .	1,670	2,147.8	2,240	2,905.5	24,350	2,824.8	24,350	2,839.0	26,440	2,806.8	26,750	2,848.8
75–84 years . . . . .	2,570	5,910.8	2,220	5,154.6	28,310	5,874.1	27,830	5,780.3	30,750	5,846.0	30,390	5,766.6
85 years and over . . . . .	2,300	14,133.0	1,840	11,659.7	23,310	13,070.7	22,640	13,998.1	25,370	13,010.3	24,780	14,160.0
Not stated . . . . .	–	...	10	...	90	...	70	...	110	...	90	...
Age-adjusted rate <sup>3</sup> . . . . .	...	534.6	...	556.9	...	578.5	...	575.0	...	575.1	...	576.2

... Category not applicable.

– Quantity zero.

\* Figure does not meet standards of reliability or precision (see [Technical notes](#)).

<sup>1</sup>Includes races other than white and black.

<sup>2</sup>Death rates for "under 1 year" (based on population estimates) differ from infant mortality rates (based on live births); see [table 9](#) for infant mortality rates.

<sup>3</sup>For method of computation, see [Technical notes](#).

NOTES: Figures include all revisions received from the States. Cumulative and 12-month figures for the current year reflect revisions received for previous months, and figures for earlier years may differ from those previously published.

**Table 6. Provisional number of deaths and death rates for 72 selected causes and Human immunodeficiency virus infection: United States, November 1994 and 1995, cumulative figures 1994 and 1995, and 12 months ending with November 1994 and 1995**

[Data are provisional, estimated from a 10-percent sample of deaths. Rates on an annual basis per 100,000 estimated population. Because of rounding of estimates, figures may not add to totals. For method of computation and information on standard errors of the estimates, see [Technical notes](#). For explanation of asterisks preceding cause-of-death categories, see [Technical notes](#)]

Cause of death (Ninth Revision, International Classification of Diseases, 1975)	November		January–November				12 months ending with November					
	1995		1994		1995		1994		1995		1994	
	Number	Rate	Number	Rate	Number	Rate	Number	Rate	Number	Rate	Number	Rate
All causes . . . . .	188,000	866.7	182,000	845.3	2,112,000	879.0	2,096,000	879.5	2,302,000	876.6	2,298,000	882.4
Shigellosis and amebiasis . . . . .004,006	–	*	–	*	–	*	10	*	–	*	10	*
Certain other intestinal infections. . . . .007–009	30	*	50	*	590	0.2	700	0.3	640	0.2	760	0.3
Tuberculosis . . . . .010–018	100	*	80	*	1,220	0.5	1,320	0.5	1,350	0.5	1,420	0.5
Tuberculosis of respiratory system . . . . .010–012	80	*	60	*	950	0.4	990	0.4	1,050	0.4	1,070	0.4
Other tuberculosis . . . . .013–018	20	*	20	*	270	0.1	330	0.1	300	0.1	350	0.1
Whooping cough. . . . .033	–	*	–	*	10	*	20	*	10	*	20	*
Streptococcal sore throat, scarlatina, and erysipelas. . . . .034–035	–	*	–	*	10	*	–	*	10	*	–	*
Meningococcal infection . . . . .036	20	*	20	*	300	0.1	260	0.1	340	0.1	280	0.1
Septicemia . . . . .038	1,690	7.8	1,550	7.2	19,510	8.1	18,330	7.7	21,080	8.0	20,240	7.8
Acute poliomyelitis. . . . .045	–	*	–	*	–	*	–	*	–	*	–	*
Measles . . . . .055	–	*	–	*	–	*	10	*	–	*	10	*
Viral hepatitis . . . . .070	320	1.5	260	1.2	3,220	1.3	2,540	1.1	3,490	1.3	2,750	1.1
Syphilis . . . . .090–097	–	*	10	*	130	0.0	100	*	130	0.0	110	0.0
All other infectious and parasitic diseases <sup>1</sup> . . . . .001–003,005,020–032,037,039–041,*042–*044,046–054,056–066,071–088,098–139	4,010	18.5	4,020	18.7	45,360	18.9	42,870	18.0	49,260	18.8	47,280	18.2
Malignant neoplasms, including neoplasms of lymphatic and hematopoietic tissues . . . . .140–208	43,470	200.6	44,140	205.5	492,200	204.8	494,420	207.5	536,330	204.3	540,710	207.6
Malignant neoplasms of lip, oral cavity, and pharynx . . . . .140–149	710	3.3	650	3.0	7,360	3.1	7,140	3.0	7,970	3.0	7,920	3.0
Malignant neoplasms of digestive organs and peritoneum . . . . .150–159	10,210	47.1	10,820	50.4	114,930	47.8	116,690	48.9	125,160	47.7	127,660	49.0
Malignant neoplasms of respiratory and intrathoracic organs . . . . .160–165	12,650	58.4	12,480	58.1	142,010	59.1	141,220	59.3	154,760	58.9	154,840	59.5
Malignant neoplasm of breast . . . . .174–175	3,510	16.2	3,480	16.2	40,360	16.8	40,270	16.9	44,210	16.8	43,940	16.9
Malignant neoplasms of genital organs . . . . .179–187	4,820	22.2	4,830	22.5	55,840	23.2	56,840	23.8	60,940	23.2	61,970	23.8
Malignant neoplasms of urinary organs . . . . .188–189	1,900	8.8	1,590	7.4	21,250	8.8	20,080	8.4	23,100	8.8	22,160	8.5
Malignant neoplasms of all other and unspecified sites . . . . .170–173,190–199	5,130	23.7	5,940	27.7	60,260	25.1	62,360	26.2	65,390	24.9	68,330	26.2
Leukemia. . . . .204–208	1,570	7.2	1,370	6.4	17,990	7.5	18,350	7.7	19,620	7.5	19,920	7.6
Other malignant neoplasms of lymphatic and hematopoietic tissues. . . . .200–203	2,970	13.7	2,990	13.9	32,200	13.4	31,470	13.2	35,190	13.4	33,970	13.0
Benign neoplasms, carcinoma in situ, and neoplasms of uncertain behavior and of unspecified nature . . . . .210–239	560	2.6	580	2.7	7,680	3.2	7,070	3.0	8,300	3.2	7,870	3.0
Diabetes mellitus . . . . .250	4,630	21.4	4,410	20.5	53,610	22.3	50,420	21.2	58,450	22.3	55,400	21.3
Nutritional deficiencies . . . . .260–269	330	1.5	300	1.4	3,420	1.4	2,980	1.2	3,640	1.4	3,300	1.3
Anemias . . . . .280–285	420	1.9	350	1.6	3,850	1.6	3,790	1.6	4,210	1.6	4,180	1.6
Meningitis . . . . .320–322	60	*	40	*	740	0.3	790	0.3	890	0.3	870	0.3
Major cardiovascular diseases . . . . .390–448	76,670	353.8	73,140	340.6	860,760	358.3	861,190	361.4	938,750	357.5	945,130	362.9
Diseases of heart . . . . .390–398,402,404–429	59,270	273.5	56,670	263.9	667,840	278.0	670,440	281.4	728,130	277.3	736,700	282.9
Rheumatic fever and rheumatic heart disease. . . . .390–398	340	1.6	270	1.3	4,640	1.9	5,020	2.1	5,130	2.0	5,510	2.1
Hypertensive heart disease . . . . .402	2,000	9.2	1,760	8.2	22,420	9.3	21,880	9.2	24,330	9.3	23,460	9.0
Hypertensive heart and renal disease . . . . .404	220	1.0	210	1.0	2,120	0.9	1,940	0.8	2,370	0.9	2,200	0.8
Ischemic heart disease . . . . .410–414	39,190	180.8	36,830	171.5	436,530	181.7	442,700	185.8	475,970	181.3	486,540	186.8
Acute myocardial infarction . . . . .410	17,790	82.1	17,660	82.2	199,050	82.8	206,780	86.8	217,390	82.8	226,830	87.1
Other acute and subacute forms of ischemic heart disease . . . . .411	220	1.0	210	1.0	2,320	1.0	2,410	1.0	2,590	1.0	2,630	1.0
Angina pectoris . . . . .413	90	*	50	*	680	0.3	820	0.3	760	0.3	890	0.3
Old myocardial infarction and other forms of chronic ischemic heart disease . . . . .412,414	21,090	97.3	18,900	88.0	234,480	97.6	232,690	97.7	255,220	97.2	256,200	98.4
Other diseases of endocardium . . . . .424	1,060	4.9	1,200	5.6	14,000	5.8	13,180	5.5	15,310	5.8	14,720	5.7
All other forms of heart disease . . . . .415–423,425–429	16,450	75.9	16,400	76.4	188,120	78.3	185,720	77.9	205,010	78.1	204,270	78.4
Hypertension with or without renal disease . . . . .401,403	910	4.2	890	4.1	11,400	4.7	9,880	4.1	12,290	4.7	10,910	4.2
Cerebrovascular diseases . . . . .430–438	12,970	59.8	11,920	55.5	143,040	59.5	140,480	59.0	156,500	59.6	153,420	58.9
Intracerebral and other intracranial hemorrhage. . . . .431–432	1,960	9.0	1,790	8.3	19,720	8.2	19,270	8.1	21,560	8.2	20,900	8.0
Cerebral thrombosis and unspecified occlusion of cerebral arteries. . . . .434.0,434.9	1,050	4.8	1,140	5.3	12,240	5.1	13,750	5.8	13,480	5.1	15,120	5.8
Cerebral embolism . . . . .434.1	30	*	20	*	580	0.2	820	0.3	680	0.3	870	0.3

See [footnotes](#) at end of table.

**Table 6. Provisional number of deaths and death rates for 72 selected causes and Human immunodeficiency virus infection: United States, November 1994 and 1995, cumulative figures 1994 and 1995, and 12 months ending with November 1994 and 1995**

[Data are provisional, estimated from a 10-percent sample of deaths. Rates on an annual basis per 100,000 estimated population. Because of rounding of estimates, figures may not add to totals. For method of computation and information on standard errors of the estimates, see Technical notes. For explanation of asterisks preceding cause-of-death categories, see Technical notes]

Cause of death (Ninth Revision, International Classification of Diseases, 1975)	November				January–November				12 months ending with November			
	1995		1994		1995		1994		1995		1994	
	Number	Rate	Number	Rate	Number	Rate	Number	Rate	Number	Rate	Number	Rate
All other and late effects of cerebrovascular diseases . . . . .430,433,435–438	9,930	45.8	8,980	41.8	110,500	46.0	106,650	44.8	120,780	46.0	116,520	44.7
Atherosclerosis . . . . .440	1,440	6.6	1,410	6.6	14,790	6.1	16,040	6.7	16,170	6.2	17,390	6.7
Other diseases of arteries, arterioles, and capillaries . . . . .441–448	2,080	9.6	2,250	10.5	23,700	9.9	24,360	10.2	25,660	9.8	26,710	10.3
Acute bronchitis and bronchiolitis . . . . .466	60	*	10	*	520	0.2	500	0.2	550	0.2	550	0.2
Pneumonia and influenza . . . . .480–487	6,570	30.3	5,750	26.8	72,970	30.4	75,170	31.6	79,630	30.3	82,980	31.9
Pneumonia . . . . .480–486	6,540	30.2	5,750	26.8	72,530	30.2	73,920	31.0	79,180	30.2	81,560	31.3
Influenza . . . . .487	30	*	–	*	450	0.2	1,250	0.5	450	0.2	1,420	0.5
Chronic obstructive pulmonary diseases and allied conditions . . . . .490–496	7,430	34.3	7,490	34.9	95,080	39.6	93,300	39.2	102,940	39.2	102,130	39.2
Bronchitis, chronic and unspecified . . . . .490–491	210	1.0	160	0.7	2,730	1.1	3,230	1.3	3,110	1.2	3,630	1.4
Emphysema . . . . .492	1,260	5.8	1,340	6.2	16,170	6.7	15,870	6.6	17,520	6.7	17,210	6.6
Asthma . . . . .493	460	2.1	400	1.9	5,050	2.1	4,910	2.1	5,360	2.0	5,360	2.1
Other chronic obstructive pulmonary diseases and allied conditions . . . . .494–496	5,490	25.3	5,580	26.0	71,130	29.6	69,290	29.1	76,960	29.3	75,930	29.2
Ulcer of stomach and duodenum . . . . .531–533	400	1.8	440	2.0	5,450	2.3	5,630	2.4	5,840	2.2	5,950	2.3
Appendicitis . . . . .540–543	30	*	20	*	390	0.2	290	0.1	420	0.2	310	0.1
Hernia of abdominal cavity and intestinal obstruction without mention of hernia . . . . .550–553,560	470	2.2	510	2.4	5,520	2.3	5,430	2.3	6,060	2.3	5,970	2.3
Chronic liver disease and cirrhosis . . . . .571	2,020	9.3	2,160	10.0	23,180	9.6	23,190	9.7	25,650	9.8	25,410	9.8
Cholelithiasis and other disorders of gallbladder . . . . .574–575	230	1.1	160	0.7	2,440	1.0	2,360	1.0	2,680	1.0	2,530	1.0
Nephritis and nephrotic syndrome, and nephrosis . . . . .580–589	1,950	9.0	2,330	10.8	23,260	9.7	22,490	9.4	25,460	9.7	24,340	9.3
Acute glomerulonephritis and nephrotic syndrome . . . . .580–581	30	*	–	*	260	0.1	230	0.1	270	0.1	270	0.1
Chronic glomerulonephritis, nephritis and nephropathy, not specified as acute or chronic, and renal sclerosis, unspecified . . . . .582–583,587	160	0.7	200	0.9	1,190	0.5	1,460	0.6	1,330	0.5	1,560	0.6
Renal failure, disorders resulting from impaired renal function, and small kidney of unknown cause . . . . .584–586,588–589	1,760	8.1	2,130	9.9	21,810	9.1	20,800	8.7	23,860	9.1	22,510	8.6
Infections of kidney . . . . .590	30	*	70	*	690	0.3	970	0.4	750	0.3	1,050	0.4
Hyperplasia of prostate . . . . .600	10	*	60	*	390	0.2	380	0.2	410	0.2	400	0.2
Complications of pregnancy, childbirth, and the puerperium . . . . .630–676	50	*	30	*	300	0.1	340	0.1	300	0.1	380	0.1
Pregnancy with abortive outcome . . . . .630–638	10	*	–	*	20	*	60	*	20	*	60	*
Other complications of pregnancy, childbirth, and the puerperium . . . . .640–676	40	*	30	*	280	0.1	280	0.1	280	0.1	320	0.1
Congenital anomalies . . . . .740–759	1,020	4.7	1,030	4.8	10,540	4.4	10,550	4.4	11,560	4.4	11,580	4.4
Certain conditions originating in the perinatal period . . . . .760–779	1,030	4.7	1,030	4.8	12,370	5.1	12,920	5.4	13,630	5.2	14,350	5.5
Birth trauma, intrauterine hypoxia, birth asphyxia, and respiratory distress syndrome . . . . .767–769	170	0.8	210	1.0	1,840	0.8	2,220	0.9	2,000	0.8	2,480	1.0
Other conditions originating in the perinatal period . . . . .760–766,770–779	870	4.0	820	3.8	10,530	4.4	10,700	4.5	11,630	4.4	11,860	4.6
Symptoms, signs, and ill-defined conditions . . . . .780–799	3,720	17.2	3,100	14.4	38,420	16.0	37,190	15.6	41,480	15.8	40,780	15.7
All other diseases . . . . .Residual	17,950	82.8	16,510	76.9	194,290	80.9	185,890	78.0	211,870	80.7	203,740	78.2
Accidents and adverse effects . . . . .E800–E949	7,550	34.8	7,110	33.1	82,530	34.3	80,950	34.0	89,960	34.3	88,700	34.1
Motor vehicle accidents . . . . .E810–E825	3,790	17.5	3,490	16.2	40,320	16.8	38,430	16.1	43,940	16.7	42,180	16.2
All other accidents and adverse effects . . . . .E800–E807,E826–E949	3,750	17.3	3,620	16.9	42,210	17.6	42,520	17.8	46,020	17.5	46,520	17.9
Suicide . . . . .E950–E959	2,400	11.1	2,680	12.5	27,740	11.5	27,970	11.7	30,350	11.6	30,590	11.7
Homicide and legal intervention . . . . .E960–E978	1,960	9.0	2,050	9.5	20,570	8.6	21,920	9.2	22,330	8.5	24,090	9.3
All other external causes . . . . .E980–E999	90	*	300	1.4	2,090	0.9	2,210	0.9	2,330	0.9	2,370	0.9
Human immunodeficiency virus infection <sup>2</sup> . . . . .*042–*044	3,520	16.2	3,530	16.4	39,260	16.3	36,880	15.5	42,690	16.3	40,590	15.6

– Quantity zero. \* Figure does not meet standards of reliability or precision (see Technical notes). 0.0 Quantity more than zero but less than 0.05.

<sup>1</sup>Includes data for deaths due to Human immunodeficiency virus infection (categories \*042–\*044) shown separately below; see Technical notes.<sup>2</sup>Included in All other infectious and parasitic diseases shown above.

NOTES: Figures include all revisions received from the States. Cumulative and 12-month figures for the current year reflect revisions received for previous months, and figures for earlier years may differ from those previously published.

**Table 7. Provisional number of deaths and death rates for 16 selected subcategories of Malignant neoplasms, including neoplasms of lymphatic and hematopoietic tissues: United States, November 1994 and 1995, cumulative figures 1994 and 1995, and 12 months ending with November 1994 and 1995**

[Data are provisional, estimated from a 10-percent sample of deaths. Rates on an annual basis per 100,000 estimated population. Because of rounding of estimates, figures may not add to totals. For method of computation and information on standard errors of the estimates, see [Technical notes](#)]

Cause of death (Ninth Revision, International Classification of Diseases, 1975)	November				January–November				12 months ending with November			
	1995		1994		1995		1994		1995		1994	
	Number	Rate	Number	Rate	Number	Rate	Number	Rate	Number	Rate	Number	Rate
Malignant neoplasms, including neoplasms of lymphatic and hematopoietic tissues <sup>1</sup> . . . . .140–208	43,470	200.6	44,140	205.5	492,200	204.8	494,420	207.5	536,330	204.3	540,710	207.6
Malignant neoplasm of esophagus . . . . .150	790	3.6	800	3.7	9,590	4.0	10,340	4.3	10,420	4.0	11,300	4.3
Malignant neoplasm of stomach . . . . .151	1,140	5.3	1,250	5.8	12,770	5.3	12,500	5.2	13,890	5.3	13,610	5.2
Malignant neoplasms of colon, rectum, rectosigmoid junction, and anus . . . . .153,154	4,660	21.5	5,220	24.3	51,390	21.4	53,930	22.6	56,100	21.4	59,080	22.7
Malignant neoplasm of pancreas . . . . .157	2,000	9.2	2,250	10.5	24,990	10.4	24,550	10.3	27,190	10.4	26,940	10.3
Malignant neoplasms of trachea, bronchus, and lung . . . . .162	12,190	56.2	12,020	56.0	137,170	57.1	136,450	57.3	149,430	56.9	149,660	57.5
Malignant melanoma of skin . . . . .172	550	2.5	560	2.6	6,560	2.7	6,660	2.8	7,030	2.7	7,430	2.9
Malignant neoplasm of cervix uteri . . . . .180	440	2.0	390	1.8	4,350	1.8	4,210	1.8	4,730	1.8	4,670	1.8
Malignant neoplasms of body of uterus and of uterus, part unspecified . . . . .179,182	570	2.6	490	2.3	5,580	2.3	5,440	2.3	6,020	2.3	5,960	2.3
Malignant neoplasm of ovary . . . . .183.0	1,020	4.7	1,010	4.7	12,440	5.2	12,510	5.2	13,610	5.2	13,330	5.1
Malignant neoplasm of prostate . . . . .185	2,620	12.1	2,810	13.1	31,890	13.3	32,780	13.7	34,840	13.3	35,860	13.8
Malignant neoplasm of bladder . . . . .188	1,010	4.7	670	3.1	10,650	4.4	9,780	4.1	11,520	4.4	10,750	4.1
Malignant neoplasms of kidney and other and unspecified urinary organs . . . . .189	880	4.1	910	4.2	10,600	4.4	10,300	4.3	11,580	4.4	11,410	4.4
Malignant neoplasms of brain and other and unspecified parts of nervous system . . . . .191,192	940	4.3	1,040	4.8	10,540	4.4	11,080	4.6	11,600	4.4	11,930	4.6
Hodgkin's disease . . . . .201	130	0.6	110	0.5	1,430	0.6	1,390	0.6	1,560	0.6	1,470	0.6
Malignant lymphoma other than Hodgkin's disease . . . . .200,202	2,070	9.6	1,880	8.7	21,330	8.9	20,590	8.6	23,300	8.9	22,310	8.6
Multiple myeloma and other immunoproliferative neoplasms . . . . .203	770	3.6	990	4.6	9,440	3.9	9,490	4.0	10,330	3.9	10,200	3.9

<sup>1</sup>Includes figures for subcategories not shown below.

NOTES: Figures include all revisions received from the States. Cumulative and 12-month figures for the current year reflect revisions received for previous months, and figures for earlier years may differ from those previously published.

**Table 8. Provisional number of deaths and death rates for injury by firearms: United States, November 1994 and 1995, cumulative figures 1994 and 1995, and 12 months ending with November 1994 and 1995**

[Data are provisional, estimated from a 10-percent sample of deaths. Rates on an annual basis per 100,000 estimated population. Because of rounding of estimates, figures may not add to totals. For method of computation and information on standard errors of the estimates, see [Technical notes](#)]

Cause of death (Ninth Revision, International Classification of Diseases, 1975)	November				January–November				12 months ending with November			
	1995		1994		1995		1994		1995		1994	
	Number	Rate	Number	Rate	Number	Rate	Number	Rate	Number	Rate	Number	Rate
Injury by firearms . . . . .E922,E955.0–E955.4,E965.0–965.4,E970,E985.0–E985.4	3,140	14.5	3,610	16.8	32,620	13.6	35,460	14.9	35,520	13.5	39,110	15.0
Accident caused by firearm missile . . . . .E922	140	0.6	200	0.9	1,170	0.5	1,360	0.6	1,360	0.5	1,590	0.6
Suicide by firearms . . . . .E955.0–E955.4	1,500	6.9	1,880	8.7	16,670	6.9	18,010	7.5	18,050	6.9	19,730	7.6
Homicide and legal intervention by firearms . . . . .E965.0–E965.4,E970	1,500	6.9	1,500	7.0	14,550	6.0	15,860	6.6	15,830	6.0	17,520	6.7
Injury by firearms, undetermined whether accidentally or purposely inflicted . . . . .E985.0–E985.4	10	*	20	*	230	0.1	240	0.1	280	0.1	270	0.1

\* Figure does not meet standards of reliability or precision (see [Technical notes](#)).

NOTES: Figures include all revisions received from the States. Cumulative and 12-month figures for the current year reflect revisions received for previous months, and figures for earlier years may differ from those previously published.



**Table 9. Provisional number of deaths under 1 year and infant mortality rates, by age and for 10 selected causes: United States, November 1994 and 1995, cumulative figures 1994 and 1995, and 12 months ending with November 1994 and 1995**

[Data are provisional, estimated from a 10-percent sample of deaths. Rates on an annual basis per 100,000 live births. Because of rounding of estimates, figures may not add to totals. For method of computation and information on standard errors of the estimates, see [Technical notes](#)]

Age and cause of death (Ninth Revision, International Classification of Diseases, 1975)	November				January–November				12 months ending with November			
	1995		1994		1995		1994		1995		1994	
	Number	Rate	Number	Rate	Number	Rate	Number	Rate	Number	Rate	Number	Rate
Total, under 1 year . . . . .	2,300	751.2	2,500	780.3	26,900	749.7	28,900	791.7	29,400	755.2	31,700	798.7
Under 28 days . . . . .	1,440	461.9	1,470	461.7	17,150	478.4	17,980	493.1	18,820	483.4	19,830	499.8
28 days–11 months . . . . .	910	291.9	1,010	317.2	9,670	269.8	10,890	298.7	10,520	270.2	11,860	298.9
Certain gastrointestinal diseases . . . . .008–009,535,555–558	20	*	20	*	180	5.0	240	6.6	190	4.9	250	6.3
Pneumonia and influenza . . . . .480–487	30	*	10	*	310	8.6	390	10.7	360	9.2	390	9.8
Congenital anomalies . . . . .740–759	510	163.6	600	188.5	5,730	159.8	6,210	170.3	6,300	161.8	6,730	169.6
Disorders relating to short gestation and unspecified low birthweight . . . . .765	190	60.9	240	75.4	3,330	92.9	3,500	96.0	3,680	94.5	3,820	96.3
Birth trauma . . . . .767	20	*	–	*	160	4.5	200	5.5	180	4.6	200	5.0
Intrauterine hypoxia and birth asphyxia . . . . .768	70	*	70	*	460	12.8	520	14.3	500	12.8	590	14.9
Respiratory distress syndrome . . . . .769	60	*	130	40.8	1,120	31.2	1,470	40.3	1,210	31.1	1,650	41.6
Other conditions originating in the perinatal period . . . . .760–764,766,770–779	680	218.1	570	179.0	7,090	197.8	7,010	192.2	7,800	200.3	7,830	197.3
Sudden infant death syndrome . . . . .798.0	250	80.2	330	103.6	2,610	72.8	3,400	93.2	2,830	72.7	3,720	93.8
All other causes . . . . .Residual	520	166.8	520	163.3	5,820	162.4	5,930	162.6	6,280	161.3	6,510	164.1

\* Figure does not meet standards of reliability or precision (see [Technical notes](#)).

– Quantity zero.

NOTES: Figures include all revisions received from the States. Cumulative and 12-month figures for the current year reflect revisions received for previous months, and figures for earlier years may differ from those previously published.



## Technical notes

### Nature and sources of data

Data in this report are provisional unless otherwise specified and include only events occurring within the United States (50 States and the District of Columbia). Mortality data exclude fetal deaths. Data for the Commonwealth of Puerto Rico are not included in the U.S. totals.

Birth, death, and infant death figures in tables 2 and 4 for each State are estimates by State of residence. These estimates are derived by applying adjustment ratios to the actual counts of certificates for all events occurring in the State and received in registration offices during a 1-month period regardless of date of the event. The adjustment ratios for each data year represent the observed relationship between final State occurrence and residence figures for the three most recent years for which final data were available and are expressed as a single ratio for each State. As in previous years, monthly State marriage and divorce figures represent the actual count of all events occurring in the State (State of occurrence) that were received in the registration offices during the 1-month period. Delay in the receipt of certificates in a registration office may result in a low State figure for a given month followed by a high figure for the month(s) in which the delayed records are received. Data for previous months and cumulative data include revised figures received from the States.

Figures for births, deaths, and infant deaths for California in tables 2 and 4 contain adjustments for varying lengths of State reporting periods. Figures for Texas for all events shown in tables 2–4 also are adjusted for varying lengths of State reporting periods. The figures for both States are adjusted by the ratio between the number of days in the data month and the number of days in the State reporting period. The adjusted figures are included in the U.S. totals shown elsewhere in this report.

U.S. totals for births, deaths, and infant deaths are based on the State estimates by State of residence and, therefore, in effect, exclude events to nonresidents of the United States. Events to nonresidents of the United States are

included in all marriage and divorce figures. The effect of excluding events to nonresidents from the U.S. totals is small.

Provisional totals for the United States include estimates for State data shown as not available. Provisional totals for births and marriages for the entire United States include adjustments for observed differences between provisional and final monthly figures.

Divorce figures include reported annulments. The monthly national divorce estimate is obtained by multiplying the total for the reporting areas by the ratio observed between the most recent final annual divorce total for the United States and the provisional total for the reporting areas combined.

*Random variation*—Although the counts in this report are not subject to sampling variability (except the Current Mortality Sample), they may be affected by random variation. When the number of events is small and the probability of such an event is small, considerable caution must be observed in interpreting the data. Such infrequent events may be assumed to follow a Poisson probability distribution. For this distribution a simple approximation may be used to estimate the random variation as follows:

If  $N$  is the number of events in the population and  $R$  is the corresponding rate, the chances are 19 in 20 that

$$1. N - 2\sqrt{N} \text{ and } N + 2\sqrt{N}$$

covers the “true” number of events.

$$2. R - 2 \frac{R}{\sqrt{N}} \text{ and } R + 2 \frac{R}{\sqrt{N}}$$

covers the “true” rate.

If the rate  $R_1$  corresponding to  $N_1$  events is compared with the rate  $R_2$  corresponding to  $N_2$  events, the difference between the two rates may be regarded as statistically significant at the 0.05 level if it exceeds

$$2 \sqrt{\frac{R_1^2}{N_1} + \frac{R_2^2}{N_2}}$$

Additional information on random variation in numbers of events, rates, and ratios may be found in the technical appendixes of *Vital Statistics of the United States, 1990, Volumes I and II*.

### Rates

Rates are on an annual basis and, except for infant mortality rates, are per 1,000 or 100,000 estimated population residing in the United States. The populations used for computing these rates are furnished by the U.S. Bureau of the Census. Rates shown in this report beginning with 1992 were computed using populations based on the 1990 Census enumeration comparable to those used for final data. Monthly rates are based on populations estimated for the specific month. Year-to-date rates are averages of monthly rates that have been weighted by the number of days in the corresponding months. Rates for 12-month periods are the sum of events for the period per population estimated at the midpoint of the period.

Infant mortality rates are deaths under 1 year of age for the specified period (monthly, year-to-date, or 12-month period) per 1,000 or 100,000 live births. Births used for computing monthly and year-to-date infant mortality rates are adjusted for monthly variation in the number of births. Births used to compute 12-month rates do not contain this adjustment. Births used for computing infant mortality rates are not corrected for observed differences between provisional and final monthly figures as described earlier in “Nature and sources of data.” Because monthly infant mortality rates are based on relatively few events, they are highly variable. Therefore, comparisons of monthly infant mortality rates should be interpreted cautiously; see “Random variation.”

Age-adjusted death rates are used to compare relative mortality risks across groups and over time. However, they should be viewed as constructs or indexes rather than as direct or actual measures of mortality risk. Statistically, they are weighted averages of the age-specific death rates, where the weights represent the fixed population proportions by age. See chapter 5 of an earlier report (4). The age-adjusted death rates presented in this report were computed by the direct method, that is, by applying age-specific death rates to the U.S. standard million population (5). See also chapter 10 of an earlier report (4). Age groups in table 5 were used to compute the age-adjusted

rates shown in that table. It is important not to compare age-adjusted rates with crude rates.

### Current Mortality Sample

The Current Mortality Sample (CMS) is a 10-percent systematic sample of death certificates drawn each month after the certificates are counted in the State registration offices. Deaths and death rates for the United States by age, race, sex, and cause are estimated based on the sample. Because of the additional time required to select and process the certificates, data based on the CMS are published 1 month after publication of the U.S. and State counts. Complete information concerning the underlying cause of death sometimes is not available when the sample is drawn. As a result estimates based on sample counts for certain causes are biased. Correction for bias is not made in this report.

Estimated numbers of deaths based on the sample were proportionately adjusted to be consistent with estimates based on the count of death certificates received in State registration offices.

*HIV infection*—Beginning with data for 1987, the National Center for Health Statistics introduced categories \*042–\*044 for classifying and coding Human immunodeficiency virus (HIV) infection. The asterisks before the categories indicate that these codes are not part of the *Ninth Revision, International Classification of Diseases*. Deaths classified to these categories are included in All other infectious and parasitic diseases in the

List of 72 Selected Causes of Death and are also shown separately at the bottom of table 6.

*Sampling variability*—Because the estimates of deaths and death rates presented in this report with the exception of total deaths and deaths under 1 year are based on a sample of death certificates, they are subject to sampling variability. The estimated relative standard error in the following table is a measure of the sampling error of the estimated number of deaths (or of the estimated death rate) expressed as a percent of the estimate. The first column refers to monthly estimates; the second to annual; cumulative year-to-date totals fall between the two.

**Relative standard errors for estimated numbers of deaths from the Current Mortality Sample expressed as a percent of the estimate**

Estimated number of deaths	Relative standard error of estimate (as percent)	
	170,000 estimated deaths each month	2,000,000 estimated deaths each year
10 . . . . .	94.9	94.9
20 . . . . .	67.1	67.1
50 . . . . .	42.4	42.4
100 . . . . .	30.0	30.0
200 . . . . .	21.2	21.2
500 . . . . .	13.4	13.4
1,000 . . . . .	9.5	9.5
2,000 . . . . .	6.7	6.7
5,000 . . . . .	4.2	4.2
10,000 . . . . .	2.9	3.0
20,000 . . . . .	2.0	2.1
50,000 . . . . .	1.1	1.3
100,000 . . . . .	0.6	0.9
200,000 . . . . .	...	0.6
500,000 . . . . .	...	0.4
1,000,000 . . . . .	...	0.2

The chances are about 2 in 3 that the percent difference between an estimate and the result of a complete count is less than the percent shown. The chances are about 19 in 20 that the percent difference is less than twice the percent shown. A figure based on 100 or fewer estimated deaths has a relative standard error of 30 percent or more and is, therefore, considered unreliable. A rate based on 100 or fewer estimated deaths has been replaced by an asterisk.

Unless otherwise specified comparisons made in the text between death rates based on the CMS were statistically significant at the 0.05 level of significance. Lack of comment in the text about any two rates does not mean that the difference was tested and found not to be significant at this level.

### References

1. U.S. Bureau of the Census. U.S. population estimates, by age, sex, race, and Hispanic origin: 1990–95. PPL-41. 1996.
2. Clarke, SC. Advance report of final marriage statistics, 1989 and 1990. Monthly vital statistics report; vol 43 no 12, suppl. Hyattsville, Maryland: National Center for Health Statistics. 1995.
3. Clarke, SC. Advance report of final divorce statistics, 1989 and 1990. Monthly vital statistics report; vol 43 no 9, suppl. Hyattsville, Maryland: National Center for Health Statistics. 1995.
4. Feinleib M, Zarate AO, eds. Reconsidering age adjustment procedures: Workshop proceedings. National Center for Health Statistics. Vital Health Stat 4(29). 1992.
5. Grove RD, Hetzel AM. Vital statistics rates in the United States, 1940–1960. Public Health Service. Washington: National Center for Health Statistics. 1968.

---

**Suggested citation**

National Center for Health Statistics. Births, marriages, divorces, and deaths for 1995. Monthly vital statistics report; vol 44 no 12. Hyattsville, Maryland: Public Health Service. 1996.

---

**Copyright information**

All material appearing in this report is in the public domain and may be reproduced or copied without permission; citation as to source, however, is appreciated.

---

**National Center for Health Statistics**

Director  
Edward J. Sondik, Ph.D.

Deputy Director  
Jack R. Anderson

**Division of Vital Statistics**

Director  
Mary Anne Freedman

---

**DEPARTMENT OF  
HEALTH & HUMAN SERVICES**

Public Health Service  
Centers for Disease Control and Prevention  
National Center for Health Statistics  
6525 Belcrest Road  
Hyattsville, Maryland 20782

FIRST CLASS MAIL  
POSTAGE & FEES PAID  
PHS/NCHS  
PERMIT NO. G-281

---

**OFFICIAL BUSINESS  
PENALTY FOR PRIVATE USE, \$300**

---

To receive this publication regularly, contact the National Center for Health Statistics by calling 301-436-8500  
E-mail: [nchsquery@nch10a.em.cdc.gov](mailto:nchsquery@nch10a.em.cdc.gov)  
Internet: <http://www.cdc.gov/nchswwww/nchshome.htm>

---

DHHS Publication No. (PHS) 96-1120  
6-0517 (7/96)