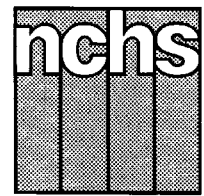


# Monthly Vital Statistics Report



Provisional Data From the CENTERS FOR DISEASE CONTROL AND PREVENTION/National Center for Health Statistics

## Births, Marriages, Divorces, and Deaths for 1994

**Mortality Surveillance System**  
pages 4-7

**Infant mortality, Neonatal mortality, Postneonatal mortality, and Sudden infant death syndrome**

**State Maps**  
pages 8 and 9

**Infant mortality and Postneonatal mortality**

Provisional data for the United States for 1994 show that the birth rate per 1,000 population declined from the previous year while the death rate remained the same. Between 1993 and 1994, a decline was observed in the infant mortality rate per 1,000 live births. The marriage rate per 1,000 population for 1994 showed an increase from the rate for 1993, while the divorce rate remained steady.

### Births

According to provisional reports, an estimated 314,000 births occurred in the United States during December 1994. This was a decrease of 3 percent from the

provisional number of births reported for December 1993 (323,000). The birth rate, 14.1 live births per 1,000 population, was 4 percent lower than the rate of 14.7 for December 1993. The fertility rate, 62.3 live births per 1,000 women aged 15-44 years, was 3 percent lower than the comparable rate for December 1993 (64.3). The seasonally adjusted fertility rate (64.8) was 2 percent lower than the comparable rate for December 1993 (65.9).

An estimated 3,979,000 live births occurred in 1994, a decline of 1 percent from the 4,039,000 births reported for the previous year. The birth rate of 15.3 was 3 percent lower than the rate of 15.7 for 1993. The fertility rate for 1994 was 67.1, 2 percent lower than the rate for 1993

### Provisional Vital Statistics for the United States

[Rates for infant deaths are deaths under 1 year per 1,000 live births; fertility rates are live births per 1,000 women aged 15-44 years; all other rates are per 1,000 total population. Data are subject to monthly reporting variation; see Technical notes]

Item	December				January-December				
	Number		Rate		Number		Rate		
	1994	1993	1994	1993	1994	1993	1994	1993	1992
Live births . . . . .	314,000	323,000	14.1	14.7	3,979,000	4,039,000	15.3	15.7	16.0
Fertility rate . . . . .	...	...	62.3	64.3	...	...	67.1	68.3	69.2
Deaths . . . . .	190,000	202,000	8.5	9.2	2,286,000	2,268,000	8.8	8.8	8.5
Infant deaths . . . . .	2,500	2,800	7.7	8.6	31,400	33,300	7.9	8.3	8.5
Natural increase . . . . .	124,000	121,000	5.6	5.5	1,693,000	1,771,000	6.5	6.9	7.5
Marriages . . . . .	173,000	185,000	7.8	8.4	2,362,000	2,334,000	9.1	9.0	9.3
Divorces . . . . .	103,000	96,000	4.7	4.4	1,191,000	1,187,000	4.6	4.6	4.8
Population base (in millions) . . . . .	...	...	261.5	259.2	...	...	260.7	257.9	255.1

NOTES: Figures include revisions received from the States. Twelve-month figures for the current year reflect revisions received for previous months, and figures for earlier years may differ from those previously published.



U.S. DEPARTMENT OF HEALTH AND HUMAN SERVICES  
Public Health Service  
Centers for Disease Control and Prevention  
National Center for Health Statistics

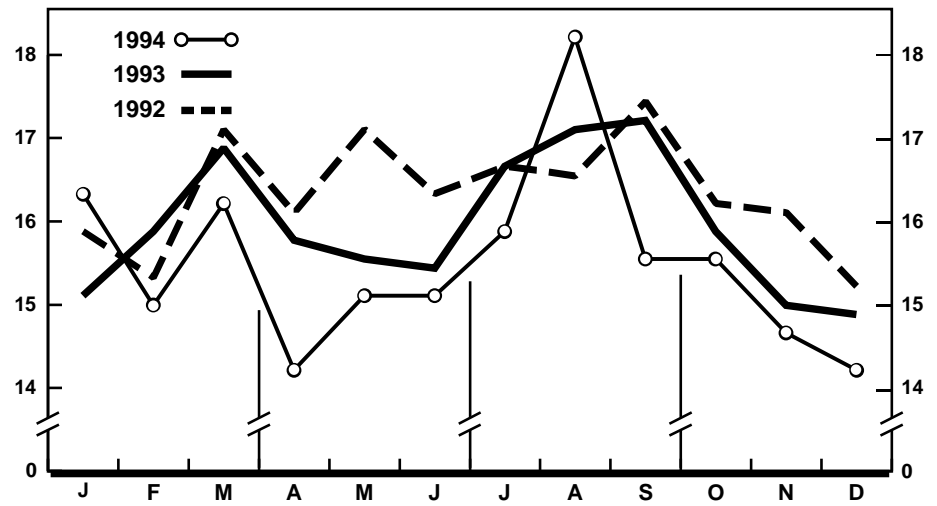


(68.3). These lower rates continue the generally downward trend in 12-month rates observed since early 1991.

**Natural increase**

As a result of natural increase, the excess of births over deaths, an estimated 124,000 people or 5.6 persons per 1,000 population were added to the population during December 1994.

For 1994, 1,693,000 persons were added to the population. This represented a rate of natural increase of 6.5, 6 percent lower than the rate of 6.9 for 1993. The decline in the rate of natural increase was due to a decrease in the birth rate and no change in the death rate.

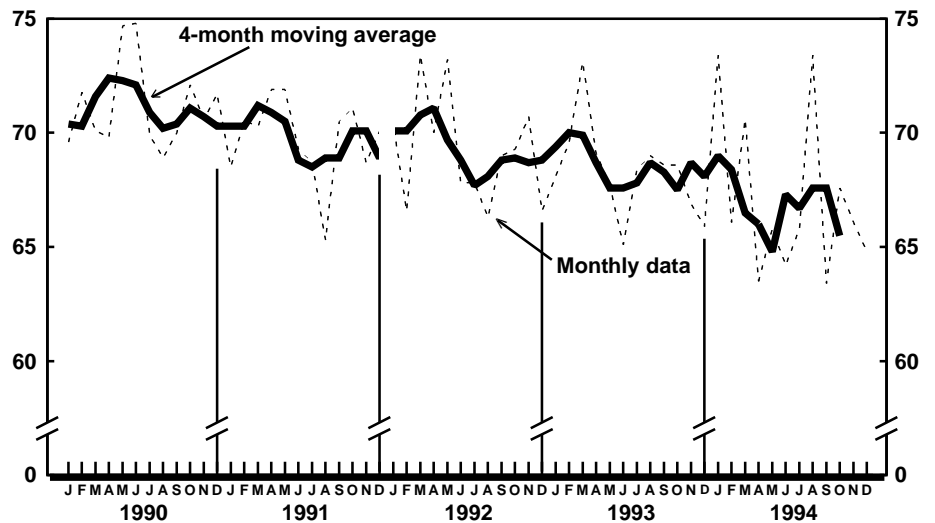


Provisional birth rates per 1,000 population by month: United States, 1992-94

**Marriages**

Approximately 173,000 couples married in December 1994, 6 percent fewer than in December a year earlier (185,000). The marriage rate was 7.8 per 1,000 population in December 1994 compared with 8.4 in December 1993—a 7-percent decline.

Despite the lower number and rate of marriages for December, the total number of marriages for 1994 (2,362,000) was 1 percent higher than in 1993 (2,334,000). The marriage rate for the 12-month period was also 1 percent higher in 1994 (9.1) than in 1993 (9.0).



Provisional seasonally adjusted fertility rates per 1,000 women aged 15-44 years: United States, 1990-94

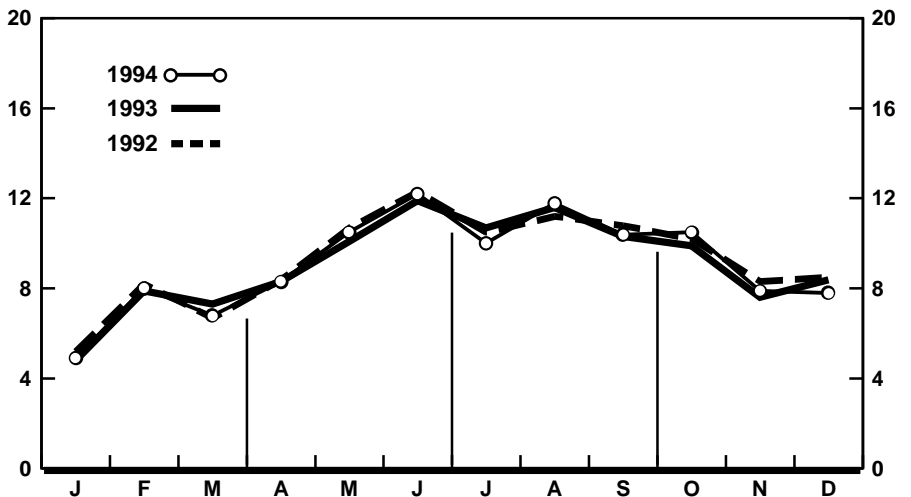
**Divorces**

An estimated 103,000 couples divorced in December 1994, which was 7 percent more than in December of the previous year (96,000). The divorce rate for December was also 7 percent higher in 1994 (4.7) than in 1993 (4.4).

The number and rate of divorces for 1994 were essentially unchanged from 1993. The number was less than 1 percent higher in 1994 (1,191,000) than in 1993 (1,187,000), and the divorce rate remained steady at 4.6 for both years.

**Deaths**

The provisional count of deaths furnished by the 50 States and the District of Columbia during 1994 totaled 2,286,000, approximately 18,000 more deaths than



Provisional marriage rates per 1,000 population by month: United States, 1992-94

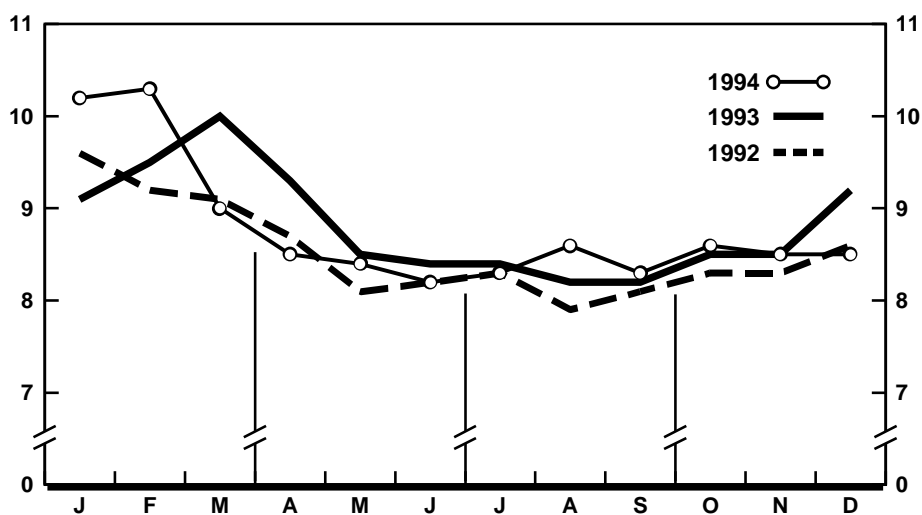
in the previous year. The death rate of 8.8 per 1,000 population was the same as the rate for 1993. An estimated 31,400 deaths were to infants under 1 year of age. The infant mortality rate was 7.9 per 1,000 live births, 5 percent lower than the rate of 8.3 for 1993.

*Current Mortality Sample, 12 months ending with November 1994*—The provisional death rate for the 12 months ending with November 1994 was 882.4 per 100,000 population, 1 percent higher than the rate of 874.1 for the 12-month period ending November 1993. The provisional age-adjusted death rate for the 12-month period ending with November 1994 was 511.6 per 100,000 U.S. standard million population, compared with a rate of 511.2 for the 12-month period ending with November 1993. The change in the age-adjusted death rate was not statistically significant. The age-adjusted death rates control for changes and variations in the age composition of the population; therefore, they are better indicators than crude rates for showing changes in mortality risk over time and for showing differences between race-sex groups within the population. For the four race-sex groups, the changes in the estimated age-adjusted death rates were not statistically significant. By age the death rate for the total population decreased for the age group under 1 year. The death rate increased for the age group 85 years and over.

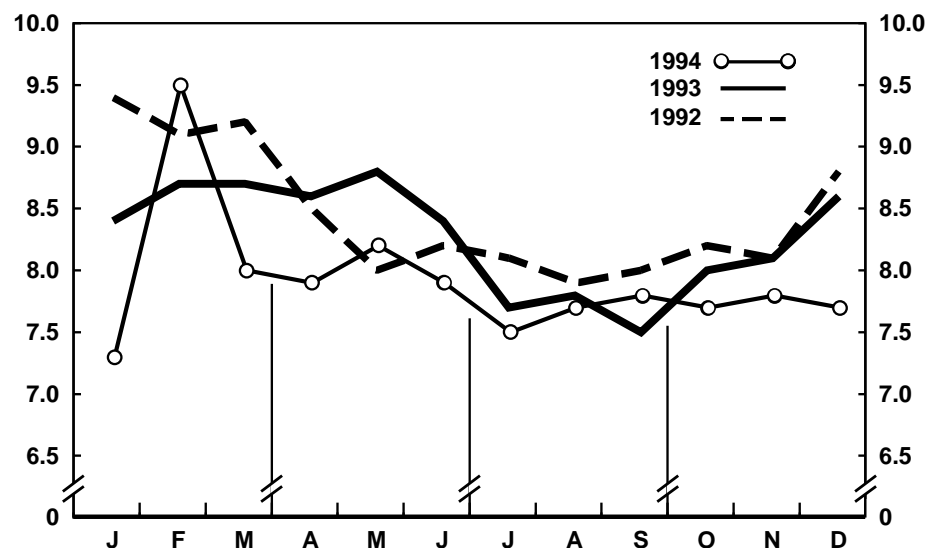
Among the major causes of death, the estimated death rate increased between the two successive 12-month periods for Malignant neoplasms, including neoplasms of lymphatic and hematopoietic tissues and for the subcategory Malignant neoplasms of digestive organs and peritoneum. The death rate also increased for Accidents and adverse effects, Pneumonia and influenza, and Human immunodeficiency virus infection.

The death rate for injury by firearms for the 12 months ending with November 1994 was 15.0 per 100,000 population, compared with a rate of 14.7 for the comparable 12-month period a year earlier. The change in the death rate for injury by firearms was not statistically significant.

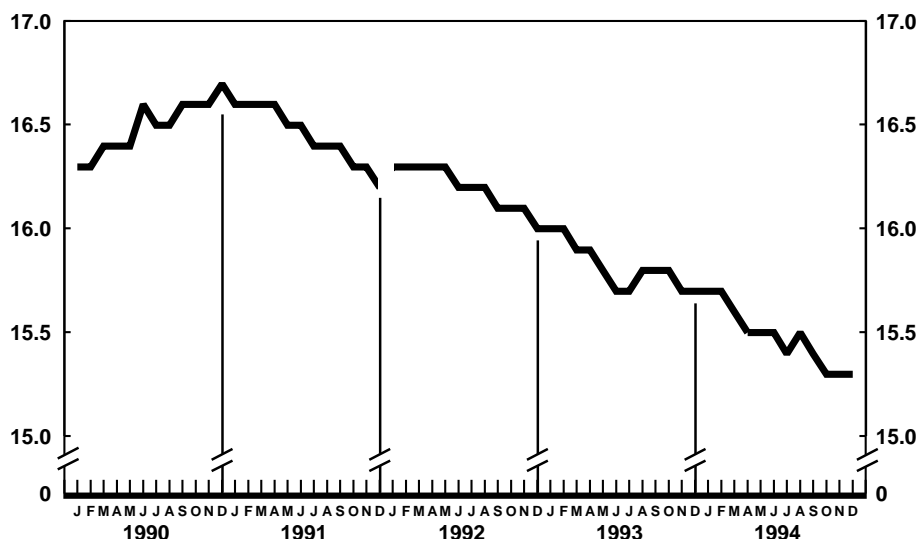
The infant mortality rate for the 12 months ending with November 1994 was 799.1 per 100,000 live births, 4 percent



Provisional death rates per 1,000 population by month: United States, 1992-94



Provisional infant mortality rates per 1,000 live births by month: United States, 1992-94



Provisional birth rates per 1,000 population for successive 12-month periods ending with month indicated: United States, 1990-94

lower than the rate of 831.1 for the same 12-month period a year earlier. For infants under 28 days, the 12-month rate ending November 1994 was 499.5, 6 percent lower than the rate of 529.7 for the 12-month period a year earlier. The infant mortality rate for infants 28 days to 11 months was 298.9, compared with a rate of 301.4 for the 12-month period a year earlier. The change in the mortality rate for infants 28 days to 11 months was not statistically significant. Among causes of infant death, the infant mortality rate decreased between the two successive 12-month periods for Sudden infant death syndrome.

**Mortality Surveillance System**

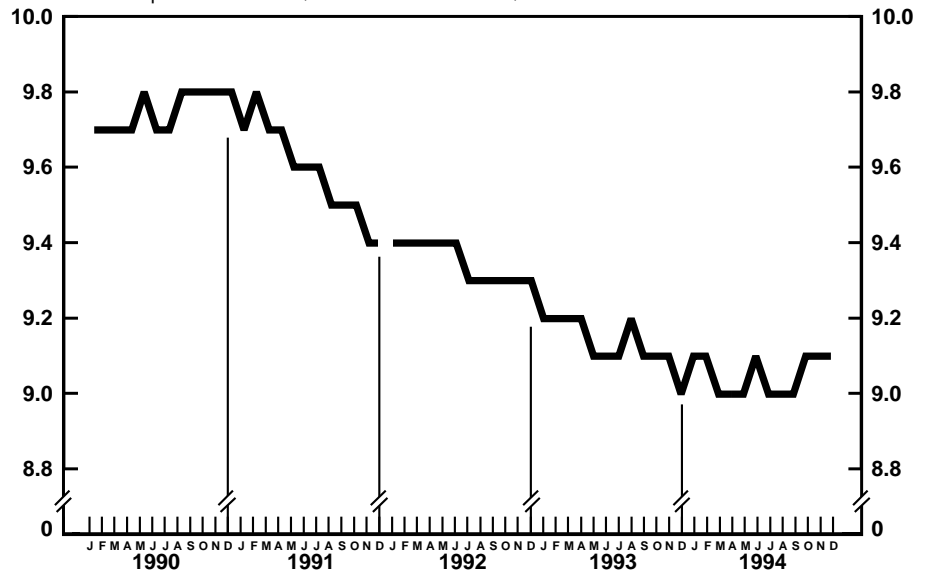
Discussed this month are recent trends in infant mortality rates (deaths to infants under 1 year of age per 100,000 live births); neonatal mortality rates (under 28 days); postneonatal mortality rates (28 days to 11 months); and trends in infant mortality rates for Sudden infant death syndrome. In this issue final mortality data are analyzed for data year 1992 and provisional data from January 1985 to August 1994.

In 1992, the latest year for which final mortality data are available, there were a total of 34,628 deaths to infants under 1 year. Of these, 21,849 deaths or 63 percent of all infant deaths were to infants under 28 days and 12,779 deaths or 37 percent of all infant deaths were to infants 28 days to 11 months.

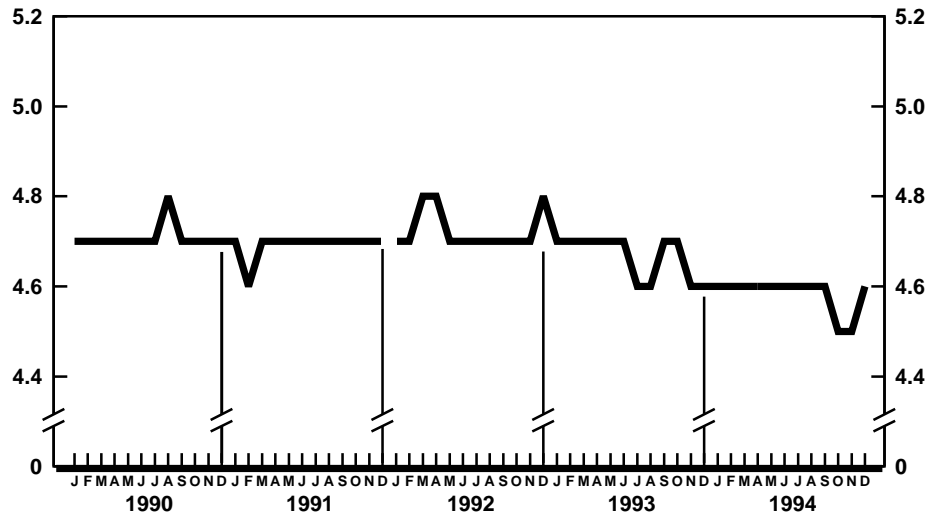
Based on 1992 final data, the infant mortality rate was 851.9 infant deaths per 100,000 live births. The neonatal mortality rate was 537.5 per 100,000 live births for infants under 28 days, 1.7 times the postneonatal mortality rate of 314.4. Infant mortality rates, neonatal mortality rates, and postneonatal mortality rates have been generally decreasing since the early 1960's.

In 1992 Sudden infant death syndrome accounted for 4,891 deaths or 14 percent of all deaths to infants under 1 year and was the second leading cause of infant death (after Congenital anomalies) in that year.

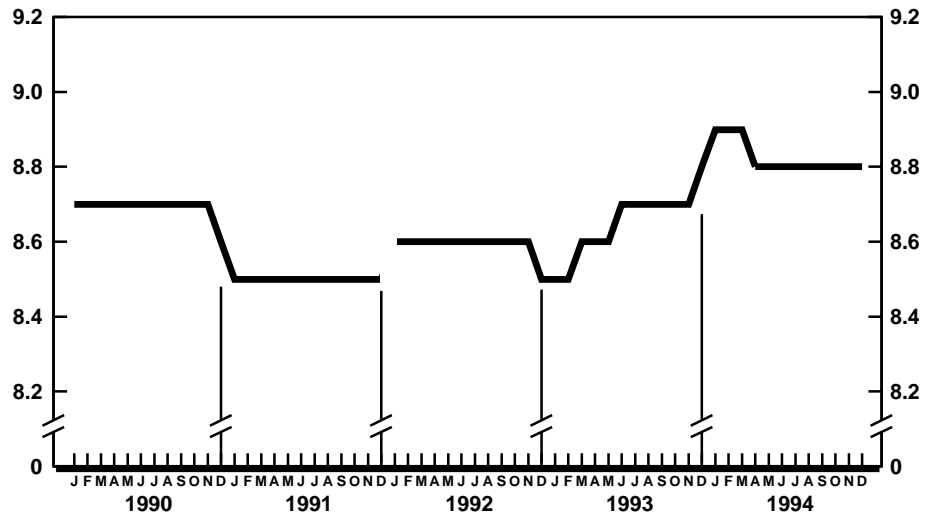
Trends based on provisional data for these age groups and cause of infant death are presented in the Mortality



Provisional marriage rates per 1,000 population for successive 12-month periods ending with month indicated: United States, 1990-94

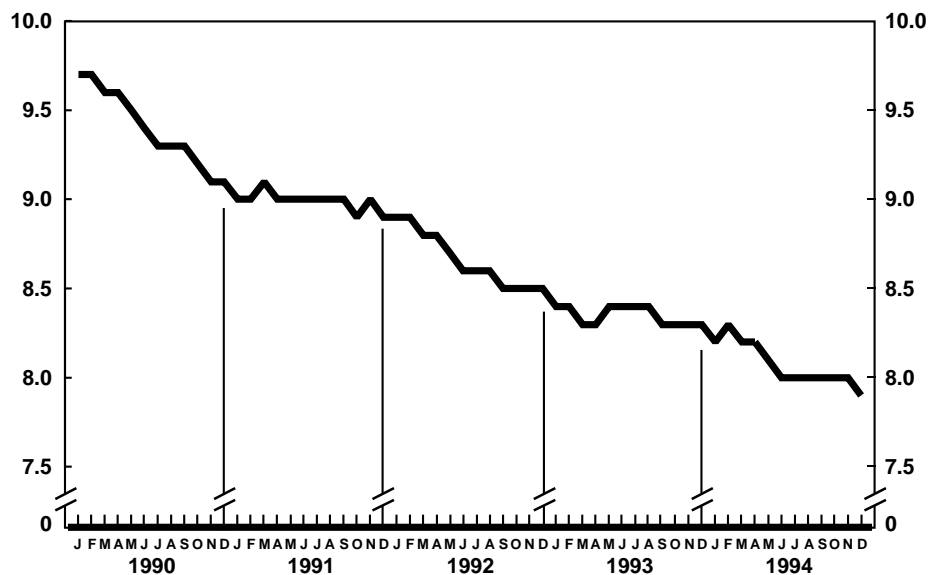


Provisional divorce rates per 1,000 population for successive 12-month periods ending with month indicated: United States, 1990-94



Provisional death rates per 1,000 population for successive 12-month periods ending with month indicated: United States, 1990-94

Surveillance System charts and accompanying text that follow.

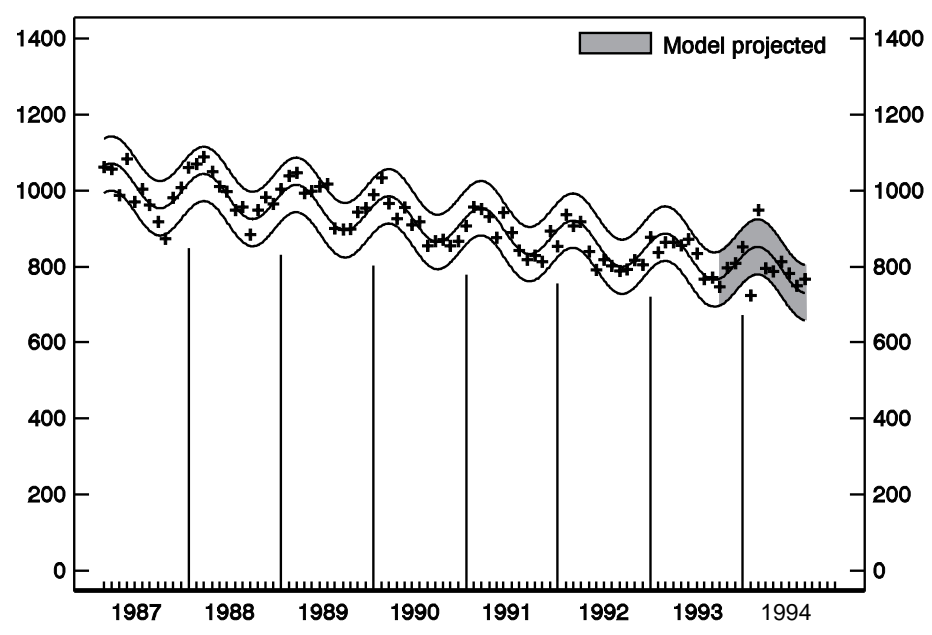


Provisional infant mortality rates per 1,000 live births for successive 12-month periods ending with month indicated: United States, 1990-94

## Mortality Surveillance System charts

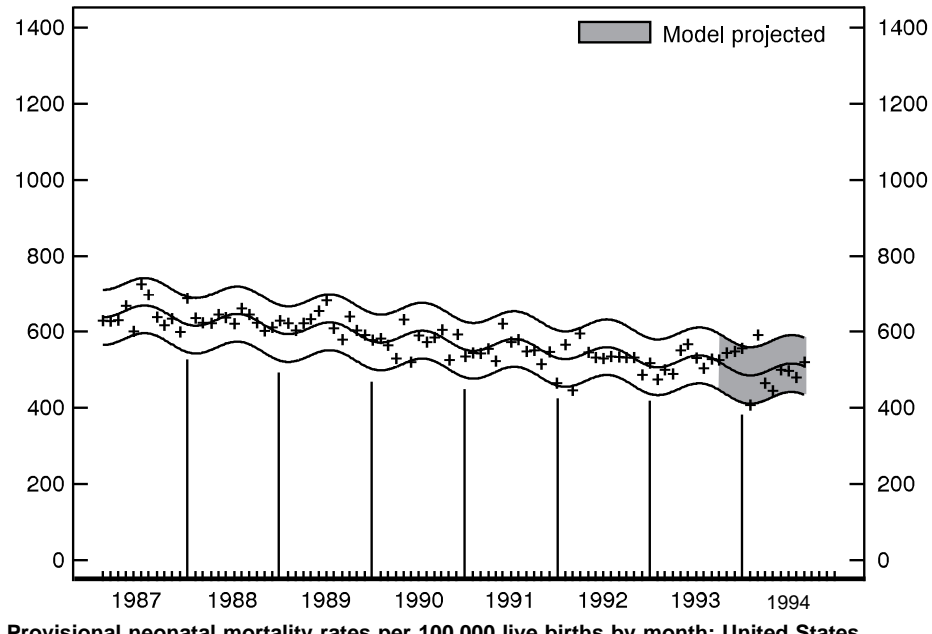
[Observed and fitted provisional monthly death rates and 95-percent prediction intervals. Model fitted using death rates for January 1985–August 1993; projected for September 1993–August 1994. See Technical notes]

Trends in infant and neonatal mortality are presented in the charts below. Reduction of infant and neonatal mortality is addressed in *Healthy People 2000* (objective 14.1) (1).



Provisional infant mortality rates per 100,000 live births by month: United States, 1987–94

- For the modeled period, provisional infant mortality rates decreased.
- For the projection period, observed provisional monthly rates, except for two, fell within 95-percent prediction intervals.
- Mortality shows a seasonal pattern with infant mortality rates higher in the winter.



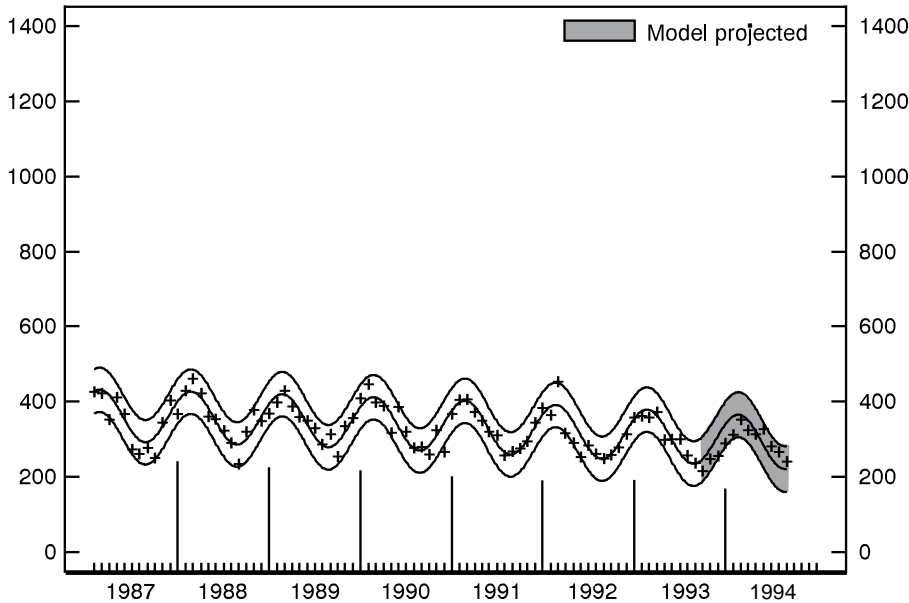
Provisional neonatal mortality rates per 100,000 live births by month: United States, 1987–94

- For the modeled period, provisional neonatal mortality rates decreased.
- For the projection period, observed provisional monthly rates, except for one, fell within 95-percent prediction intervals.
- Mortality shows a seasonal pattern with neonatal mortality rates higher in the summer.

## Mortality Surveillance System charts—Con.

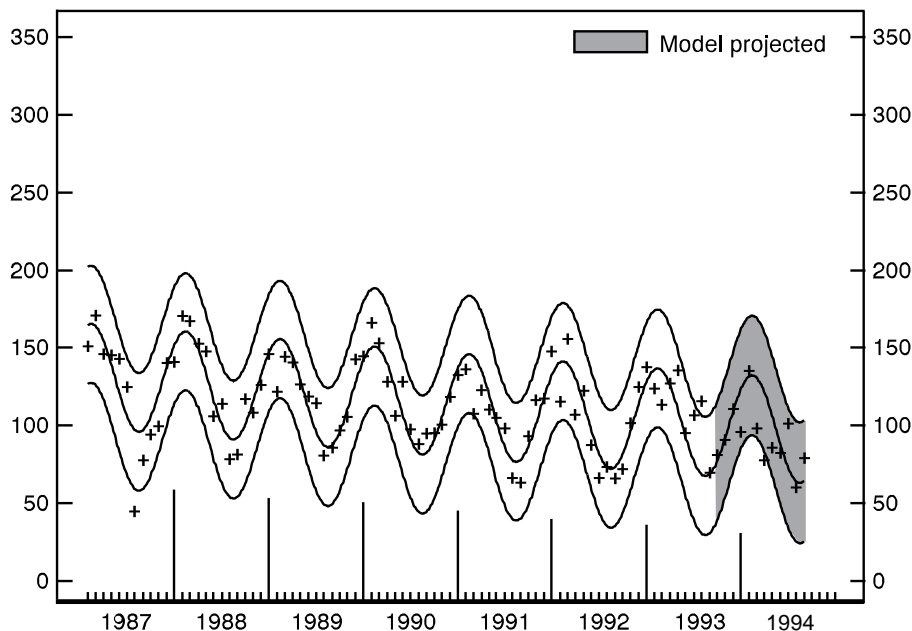
[Observed and fitted provisional monthly death rates and 95-percent prediction intervals. Model fitted using death rates for January 1985–August 1993; projected for September 1993–August 1994. See Technical notes]

Trends in postneonatal mortality and mortality from Sudden infant death syndrome are presented in the charts below. Reduction of postneonatal mortality is addressed in *Healthy People 2000* (objective 14.1) (1). *Healthy People 2000* does not address Sudden infant death syndrome.



Provisional postneonatal mortality rates per 100,000 live births by month: United States, 1987–94

- For the modeled period, provisional postneonatal mortality rates decreased.
- For the projection period, observed provisional monthly rates fell within 95-percent prediction intervals.
- Mortality shows a seasonal pattern with postneonatal mortality rates higher in the winter.

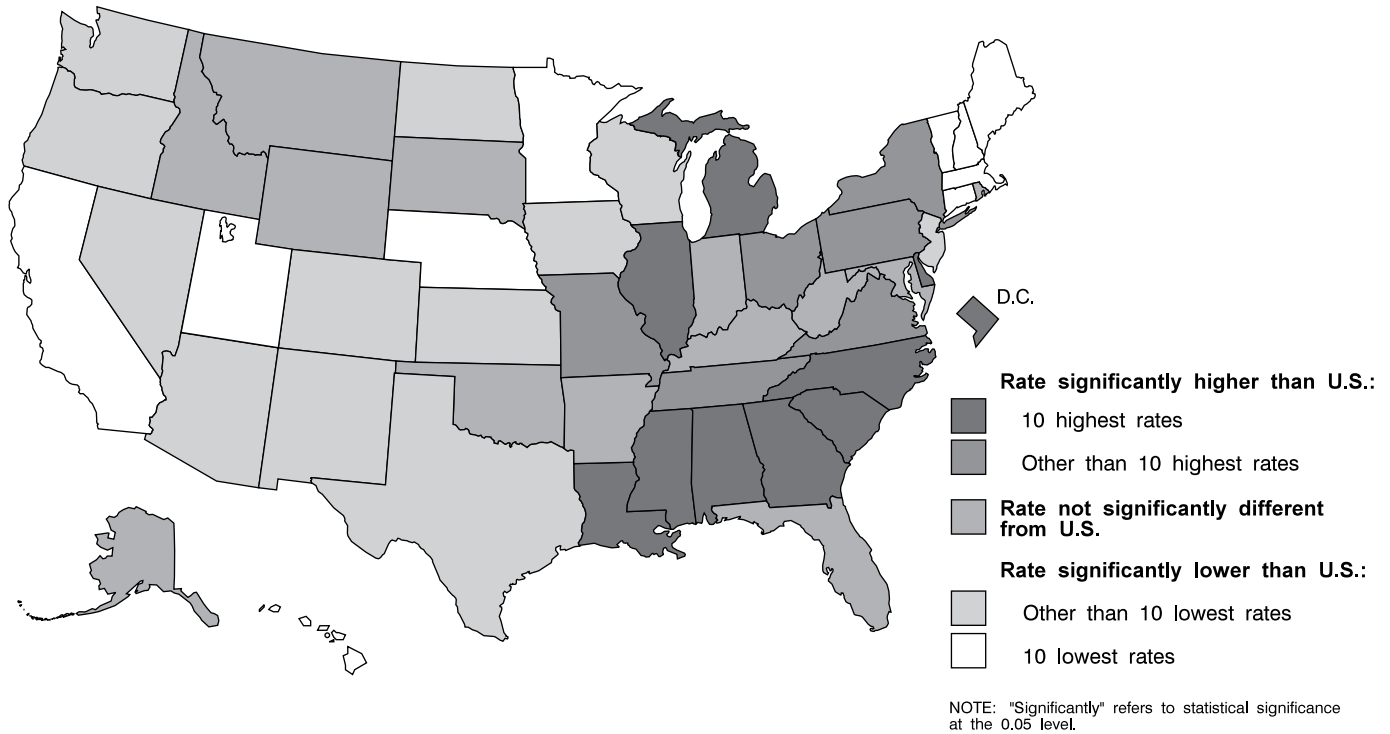


Provisional mortality rates per 100,000 live births for Sudden infant death syndrome by month: United States, 1987–94

- For the modeled period, provisional mortality rates decreased.
- For the projection period, observed provisional monthly rates, except for one, fell within 95-percent prediction intervals.
- Mortality shows a seasonal pattern with rates higher in the winter.

**Final 3-year total number of infant deaths and average annual infant mortality rates and 95-percent confidence limits: United States and each State, 1989–91**

[Data are final by State of residence]



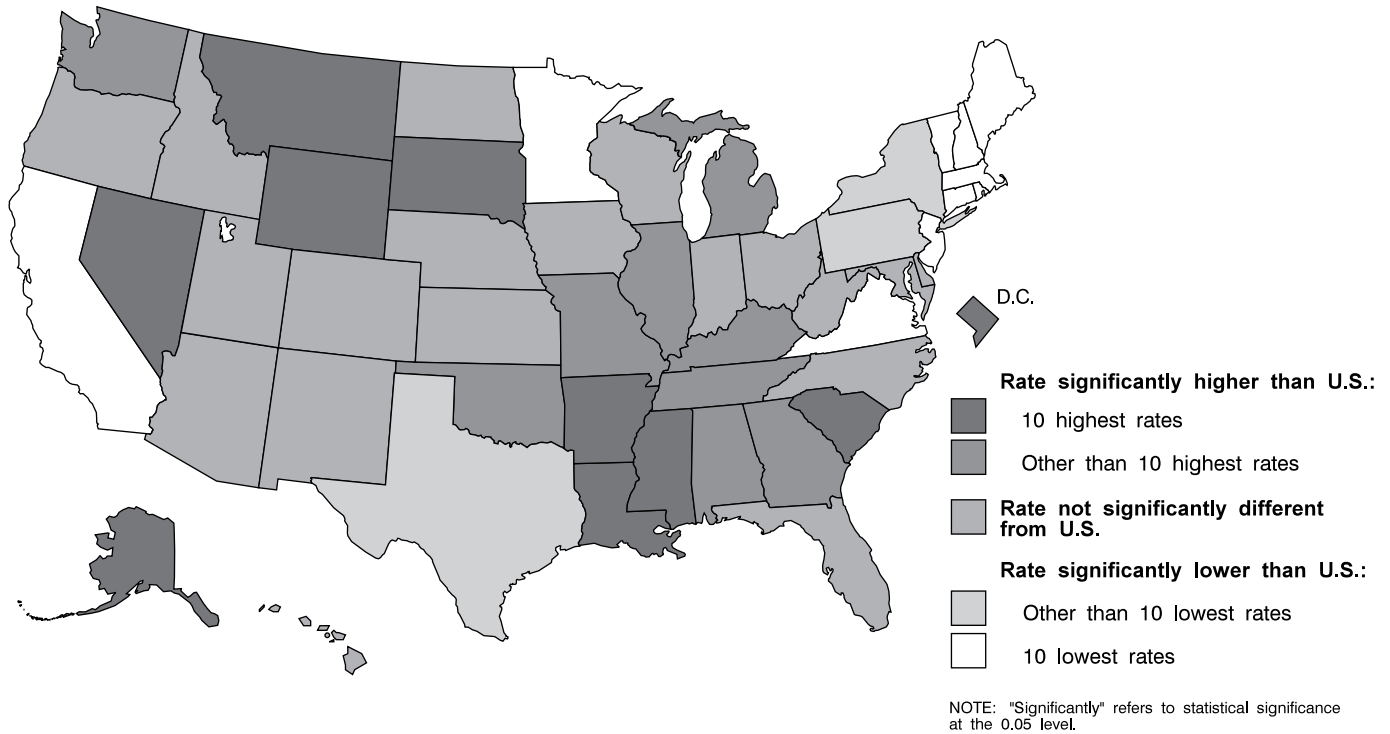
Area	Infant deaths, 3-year total (final)	Infant mortality rate (final)	95-percent confidence limits		Area	Infant deaths, 3-year total (final)	Infant mortality rate (final)	95-percent confidence limits	
			Lower	Upper				Lower	Upper
United States . . . . .	114,772	932.3	926.9	937.7	South Atlantic—Con.				
New England					West Virginia . . . . .	617	917.4	845.0	989.8
Maine . . . . .	350	††678.6	607.5	749.7	North Carolina . . . . .	3,371	††1091.0	1054.2	1127.8
New Hampshire . . . . .	366	††707.7	635.2	780.2	South Carolina . . . . .	2,065	††1190.1	1138.8	1241.4
Vermont . . . . .	158	††638.8	539.2	738.4	Georgia . . . . .	4,005	††1201.9	1164.7	1239.1
Massachusetts . . . . .	1,933	††709.7	678.1	741.3	Florida . . . . .	5,558	947.7	922.8	972.6
Rhode Island . . . . .	392	877.0	790.2	963.8	East South Central				
Connecticut . . . . .	1,190	††803.2	757.6	848.8	Kentucky . . . . .	1,441	888.9	843.0	934.8
Middle Atlantic					Tennessee . . . . .	2,305	††1035.3	993.0	1077.6
New York . . . . .	8,698	††986.6	965.9	1007.3	Alabama . . . . .	2,148	††1137.3	1089.2	1185.4
New Jersey . . . . .	3,291	†900.3	869.5	931.1	Mississippi . . . . .	1,523	††1173.2	1114.3	1232.1
Pennsylvania . . . . .	4,900	†961.5	934.6	988.4	West South Central				
East North Central					Arkansas . . . . .	1,065	987.5	928.2	1046.8
Ohio . . . . .	4,823	††971.1	943.7	998.5	Louisiana . . . . .	2,392	††1101.6	1057.5	1145.7
Indiana . . . . .	2,467	966.0	927.9	1004.1	Oklahoma . . . . .	1,303	912.3	862.8	961.8
Illinois . . . . .	6,422	††1106.6	1079.5	1133.7	Texas . . . . .	7,817	††830.0	811.6	848.4
Michigan . . . . .	4,842	††1070.2	1040.1	1100.3	Mountain				
Wisconsin . . . . .	1,849	††852.2	813.4	891.0	Montana . . . . .	318	913.7	813.3	1014.1
West North Central					Idaho . . . . .	443	901.6	817.6	985.6
Minnesota . . . . .	1,477	††729.0	691.8	766.2	Wyoming . . . . .	178	864.5	737.5	991.5
Iowa . . . . .	955	††813.3	761.7	864.9	Colorado . . . . .	1,384	††864.7	819.1	910.3
Missouri . . . . .	2,325	††986.0	945.9	1026.1	New Mexico . . . . .	704	†852.8	789.8	915.8
North Dakota . . . . .	223	†804.9	699.3	910.5	Arizona . . . . .	1,814	†887.9	847.0	928.8
South Dakota . . . . .	320	†968.8	862.7	1074.9	Utah . . . . .	776	††719.3	668.7	769.9
Nebraska . . . . .	576	††793.2	728.4	858.0	Nevada . . . . .	542	†857.2	785.0	929.4
Kansas . . . . .	1,005	†869.4	815.6	923.2	Pacific				
South Atlantic					Washington . . . . .	1,912	††816.0	779.4	852.6
Delaware . . . . .	371	††1123.1	1008.8	1237.4	Oregon . . . . .	1,031	††813.9	764.2	863.6
Maryland . . . . .	2,301	968.1	928.5	1007.7	California . . . . .	14,336	††799.7	786.6	812.8
District of Columbia . . . . .	762	††2151.6	1998.8	2304.4	Alaska . . . . .	336	953.1	851.2	1055.0
Virginia . . . . .	2,947	††1004.0	967.8	1040.2	Hawaii . . . . .	445	††744.4	675.2	813.6

NOTES: Data are final. Rates are infant (age under 1 year) deaths per 100,000 live births in specified group. The symbols † and †† denote statistical significance of the difference between the U.S. and State rates at the 0.05 and 0.01 levels, respectively. For method of computation of rates, confidence limits, and tests of statistical significance, see Technical notes.



**Final 3-year total number of postneonatal deaths and average annual postneonatal mortality rates and 95-percent confidence limits: United States and each State, 1989–91**

[Data are final by State of residence]



Area	Postneonatal deaths, 3-year total (final)	Postneonatal mortality rate (final)	95-percent confidence limits		Area	Postneonatal deaths, 3-year total (final)	Postneonatal mortality rate (final)	95-percent confidence limits	
			Lower	Upper				Lower	Upper
United States . . . . .	42,317	343.8	340.5	347.1	South Atlantic—Con.				
New England					West Virginia . . . . .	223	331.6	288.1	375.1
Maine . . . . .	108	††209.4	169.9	248.9	North Carolina . . . . .	1,108	358.6	337.5	379.7
New Hampshire . . . . .	146	††282.3	236.5	328.1	South Carolina . . . . .	729	††420.1	389.6	450.6
Vermont . . . . .	56	††226.4	167.1	285.7	Georgia . . . . .	1,373	††412.0	390.2	433.8
Massachusetts . . . . .	600	††220.3	202.7	237.9	Florida . . . . .	1,940	330.8	316.1	345.5
Rhode Island . . . . .	106	††237.2	192.0	282.4	East South Central				
Connecticut . . . . .	332	††224.1	200.0	248.2	Kentucky . . . . .	611	†376.9	347.0	406.8
Middle Atlantic					Tennessee . . . . .	852	††382.7	357.0	408.4
New York . . . . .	2,791	††316.6	304.9	328.3	Alabama . . . . .	723	††382.8	354.9	410.7
New Jersey . . . . .	1,093	††299.0	281.3	316.7	Mississippi . . . . .	578	††445.3	409.0	481.6
Pennsylvania . . . . .	1,620	††317.9	302.4	333.4	West South Central				
East North Central					Arkansas . . . . .	478	††443.2	403.5	482.9
Ohio . . . . .	1,785	359.4	342.7	376.1	Louisiana . . . . .	904	††416.3	389.2	443.4
Indiana . . . . .	911	356.7	333.5	379.9	Oklahoma . . . . .	585	††409.6	376.4	442.8
Illinois . . . . .	2,241	††386.2	370.2	402.2	Texas . . . . .	3,082	††327.2	315.6	338.8
Michigan . . . . .	1,693	††374.2	356.4	392.0	Mountain				
Wisconsin . . . . .	753	347.1	322.3	371.9	Montana . . . . .	162	††465.5	393.8	537.2
West North Central					Idaho . . . . .	181	368.4	314.7	422.1
Minnesota . . . . .	606	††299.1	275.3	322.9	Wyoming . . . . .	93	†451.7	359.9	543.5
Iowa . . . . .	384	327.0	294.3	359.7	Colorado . . . . .	588	367.4	337.7	397.1
Missouri . . . . .	916	††388.4	363.2	413.6	New Mexico . . . . .	275	333.1	293.7	372.5
North Dakota . . . . .	86	310.4	244.8	376.0	Arizona . . . . .	728	356.3	330.4	382.2
South Dakota . . . . .	151	††457.1	384.2	530.0	Utah . . . . .	370	343.0	308.0	378.0
Nebraska . . . . .	252	347.0	304.2	389.8	Nevada . . . . .	268	††423.8	373.1	474.5
Kansas . . . . .	430	372.0	336.8	407.2	Pacific				
South Atlantic					Washington . . . . .	886	††378.1	353.2	403.0
Delaware . . . . .	114	345.1	281.7	408.5	Oregon . . . . .	471	371.8	338.2	405.4
Maryland . . . . .	812	341.6	318.1	365.1	California . . . . .	5,614	††313.2	305.0	321.4
District of Columbia . . . . .	218	††615.6	533.9	697.3	Alaska . . . . .	184	††521.9	446.5	597.3
Virginia . . . . .	923	††314.5	294.2	334.8	Hawaii . . . . .	184	307.8	263.3	352.3

NOTES: Data are final. Rates are postneonatal (age 28 days–11 months) deaths per 100,000 live births in specified group. The symbols † and †† denote statistical significance of the difference between the U.S. and State rates at the 0.05 and 0.01 levels, respectively. For method of computation of rates, confidence limits, and tests of statistical significance, see Technical notes.

**Table 1. Provisional number of live births, marriages, divorces, deaths, and infant deaths and rates, by month: United States, January 1993–December 1994**

[Data are provisional and are subject to monthly reporting variation; see Technical notes]

Period	Live births				Marriages		Divorces		Deaths		Infant deaths	
	Number	Rate per 1,000 women aged 15–44 years			Number	Rate per 1,000 population	Number	Rate per 1,000 population	Number	Rate per 1,000 population	Number	Rate per 1,000 live births
		Rate per 1,000 population	Unadjusted	Seasonally adjusted <sup>1</sup>								
1993:												
January	325,000	14.9	64.7	68.1	103,000	4.8	92,000	4.2	198,000	9.1	2,800	8.4
February	308,000	15.6	68.0	69.6	154,000	7.9	87,000	4.4	187,000	9.5	2,700	8.7
March	360,000	16.5	71.7	73.1	157,000	7.3	113,000	5.2	217,000	10.0	3,000	8.7
April	328,000	15.5	67.5	69.1	174,000	8.3	98,000	4.6	196,000	9.3	2,800	8.6
May	335,000	15.3	66.8	67.7	221,000	10.1	103,000	4.7	185,000	8.5	2,900	8.8
June	321,000	15.2	66.1	65.1	252,000	11.9	101,000	4.8	178,000	8.4	2,700	8.4
July	357,000	16.3	71.2	68.4	235,000	10.7	100,000	4.6	184,000	8.4	2,700	7.7
August	367,000	16.7	73.0	69.0	254,000	11.6	100,000	4.6	180,000	8.2	2,700	7.8
September	356,000	16.8	73.3	68.6	218,000	10.3	101,000	4.8	174,000	8.2	2,600	7.5
October	344,000	15.6	68.4	68.6	218,000	9.9	102,000	4.7	188,000	8.5	2,800	8.0
November	316,000	14.8	64.9	66.9	162,000	7.6	94,000	4.4	180,000	8.5	2,600	8.1
December	323,000	14.7	64.3	65.9	185,000	8.4	96,000	4.4	202,000	9.2	2,800	8.6
1994:												
January	352,000	16.0	69.9	73.4	107,000	4.9	97,000	4.4	224,000	10.2	2,500	7.3
February	294,000	14.8	64.8	66.1	156,000	8.0	88,000	4.4	204,000	10.3	2,900	9.5
March	350,000	15.9	69.6	70.6	147,000	6.8	103,000	4.7	199,000	9.0	2,700	8.0
April	302,000	14.1	62.0	63.5	175,000	8.3	100,000	4.7	182,000	8.5	2,500	7.9
May	329,000	14.9	65.3	65.8	232,000	10.5	104,000	4.7	186,000	8.4	2,700	8.2
June	319,000	14.9	65.5	64.2	262,000	12.2	103,000	4.8	176,000	8.2	2,500	7.9
July	346,000	15.6	68.6	65.8	222,000	10.0	98,000	4.4	184,000	8.3	2,600	7.5
August	392,000	17.7	77.7	73.4	262,000	11.8	99,000	4.5	190,000	8.6	2,800	7.7
September	329,000	15.3	67.4	63.4	224,000	10.4	99,000	4.6	178,000	8.3	2,500	7.8
October	340,000	15.3	67.3	67.6	232,000	10.5	99,000	4.5	190,000	8.6	2,600	7.7
November	313,000	14.5	64.1	66.1	171,000	7.9	98,000	4.5	182,000	8.5	2,500	7.8
December	314,000	14.1	62.3	64.8	173,000	7.8	103,000	4.7	190,000	8.5	2,500	7.7

<sup>1</sup>The method of seasonal adjustment, developed by the U.S. Bureau of the Census, is described in *The X-11 Variant of the Census Method II Seasonal Adjustment Program*, Technical Paper No. 15 (1967 revision).

NOTE: Figures include all revisions received from the States and, therefore, may differ from those previously published.

**Symbols**

- - - Data not available
- . . . Category not applicable
- Quantity zero
- 0.0 Quantity more than zero but less than 0.05
- \* Figure does not meet standards of reliability or precision (see Technical notes)

**Table 2. Provisional number of live births and deaths: each division and State, December 1993 and 1994, and cumulative figures, 1992-94**

[Data are estimates by State of residence; see Technical notes]

Area	Live births					Deaths				
	December		January-December			December		January-December		
	1994	1993	1994	1993	1992	1994	1993	1994	1993	1992
New England	14,763	12,885	175,080	183,678	189,276	10,828	10,680	117,309	120,492	116,218
Maine	1,179	1,835	14,320	15,027	15,623	1,158	1,286	11,386	11,479	10,900
New Hampshire	995	977	14,605	14,952	15,719	641	723	8,907	8,919	8,555
Vermont	545	564	7,158	7,286	7,625	338	433	4,573	4,868	4,732
Massachusetts	6,460	4,754	83,449	86,317	88,185	5,056	4,561	54,558	56,460	54,292
Rhode Island	1,094	1,251	13,440	14,275	14,789	874	866	9,333	9,709	9,444
Connecticut	4,490	3,504	42,108	45,821	47,335	2,761	2,811	28,552	29,057	28,295
Middle Atlantic	47,562	47,316	552,677	560,516	570,697	30,895	31,903	368,532	369,956	359,395
New York	24,611	22,108	279,187	278,307	285,568	13,763	14,238	167,977	170,203	164,869
New Jersey	11,261	13,768	116,430	123,020	119,923	6,280	6,423	72,391	72,776	71,201
Pennsylvania	11,690	11,440	157,060	159,189	165,206	10,852	11,242	128,164	126,977	123,325
East North Central	50,975	47,512	643,399	645,299	654,228	33,408	33,379	394,562	387,135	372,449
Ohio	13,062	10,118	162,059	156,748	169,067	8,573	7,592	105,603	100,678	99,601
Indiana	7,084	6,755	83,381	84,644	83,832	4,305	4,832	53,290	52,210	50,144
Illinois	15,729	15,941	189,228	191,042	192,483	9,693	9,746	107,611	107,563	101,590
Michigan	9,860	9,283	139,931	143,576	138,968	7,008	7,462	83,312	82,651	79,307
Wisconsin	5,240	5,415	68,800	69,289	69,878	3,829	3,747	44,746	44,033	41,807
West North Central	19,218	19,431	251,531	258,692	259,737	13,908	15,041	169,968	172,679	162,094
Minnesota	5,343	4,731	64,681	63,761	65,477	3,188	3,045	36,417	36,236	34,909
Iowa	2,923	2,993	35,926	37,044	38,120	2,239	2,399	26,352	28,612	27,002
Missouri	5,370	5,261	75,366	77,424	75,437	4,094	4,562	55,985	56,305	50,447
North Dakota	737	736	8,639	8,746	8,935	463	560	6,107	5,925	5,797
South Dakota	846	947	10,615	10,830	11,281	571	683	6,851	6,863	6,927
Nebraska	2,157	1,946	23,032	22,847	23,003	1,393	1,715	14,732	15,401	14,852
Kansas	1,842	2,817	33,272	38,040	37,484	1,960	2,077	23,524	23,337	22,160
South Atlantic	55,128	58,917	661,502	673,147	680,220	35,140	40,147	428,153	423,762	403,745
Delaware	784	796	10,361	10,555	10,902	505	581	6,185	6,116	5,937
Maryland	6,381	6,130	71,553	75,526	76,173	4,896	4,832	40,600	43,087	37,806
District of Columbia	511	746	9,440	9,780	10,052	198	478	6,445	6,713	6,578
Virginia	9,161	6,983	95,865	95,161	97,600	4,552	4,308	53,829	51,773	49,541
West Virginia	1,811	1,678	21,554	22,044	22,123	1,760	1,673	20,221	19,929	20,107
North Carolina	8,113	9,563	101,911	100,597	103,047	5,458	5,819	64,512	62,580	59,478
South Carolina	3,499	4,268	50,907	53,997	56,635	2,334	2,517	31,570	31,404	30,609
Georgia	7,390	10,404	108,908	112,400	111,397	4,324	5,160	56,377	55,851	53,288
Florida	17,478	18,349	191,003	193,087	192,291	11,113	14,779	148,414	146,309	140,401
East South Central	19,922	18,181	231,741	231,361	234,462	12,852	13,522	156,124	154,664	147,410
Kentucky	3,929	4,296	51,926	52,256	53,906	2,857	3,004	37,407	36,921	35,341
Tennessee	6,238	5,586	75,688	73,613	74,048	4,572	5,106	49,645	49,628	47,149
Alabama	4,955	4,621	60,745	63,332	63,021	3,092	3,074	42,138	41,540	39,630
Mississippi	4,800	3,678	43,382	42,160	43,487	2,331	2,338	26,934	26,575	25,290
West South Central	34,684	36,674	470,975	481,374	479,421	17,860	19,861	237,175	234,665	224,221
Arkansas	2,628	2,585	34,571	34,248	34,967	2,079	2,094	26,667	26,371	25,202
Louisiana	5,291	4,253	68,454	69,819	71,743	3,191	2,841	40,418	40,117	37,446
Oklahoma	4,057	4,213	45,682	46,711	47,850	2,686	2,978	32,452	32,574	30,626
Texas <sup>1</sup>	22,708	25,623	322,268	330,596	324,861	9,904	11,948	137,638	135,603	130,947
Mountain	18,931	18,626	243,362	246,110	245,352	9,032	8,972	113,122	108,143	103,301
Montana	935	930	11,032	11,450	11,551	590	644	7,346	7,502	7,151
Idaho	1,350	1,350	17,358	17,162	17,475	785	845	8,552	8,345	8,063
Wyoming	383	637	6,385	6,662	6,823	287	329	3,512	3,544	3,333
Colorado	4,088	4,203	54,144	54,817	54,586	2,174	2,159	24,416	23,722	22,528
New Mexico	2,204	2,547	27,981	27,658	28,463	1,103	933	12,305	11,861	11,561
Arizona	4,847	5,570	66,143	70,770	66,698	2,169	1,902	34,677	32,090	30,659
Utah	3,350	2,519	38,808	36,462	37,411	942	1,052	10,545	10,193	9,904
Nevada	1,774	870	21,511	21,129	22,345	982	1,108	11,769	10,886	10,102
Pacific	56,374	60,574	734,658	733,461	756,915	25,799	28,558	300,700	296,347	287,474
Washington	6,027	5,457	79,296	71,437	79,300	4,242	4,254	39,648	41,986	37,272
Oregon	3,186	2,417	42,276	42,195	41,606	1,982	2,231	27,303	27,275	25,862
California <sup>1</sup>	44,756	50,106	581,763	589,685	604,393	18,727	21,244	224,082	217,559	215,206
Alaska	821	973	12,079	10,555	11,706	243	196	2,431	2,247	2,225
Hawaii	1,584	1,621	19,244	19,589	19,910	605	633	7,236	7,280	6,909

<sup>1</sup>Figures include adjustments for varying length of reporting periods; see Technical notes.

NOTES: Figures include all revisions received from the States. Cumulative figures for the current year reflect revisions received for previous months, and figures for earlier years may differ from those previously published.

**Table 3. Provisional number of marriages and divorces: each division and State, December 1993 and 1994, and cumulative figures, 1992-94**

[By State of occurrence. Number of events reported; see Technical notes. Divorces include reported annulments]

Area	Marriages					Divorces				
	December		January-December			December		January-December		
	1994	1993	1994	1993	1992	1994	1993	1994	1993	1992
New England . . . . .	6,445	10,203	105,080	93,919	104,398	3,613	3,714	39,646	42,645	44,674
Maine . . . . .	948	967	10,872	10,899	11,215	536	471	5,433	5,282	5,877
New Hampshire . . . . .	575	2,792	9,818	9,611	8,832	409	508	5,041	5,035	5,520
Vermont . . . . .	390	332	5,831	6,027	5,901	173	227	2,316	2,766	2,955
Massachusetts . . . . .	2,976	4,475	49,695	37,468	42,219	1,595	1,443	14,530	16,002	16,650
Rhode Island . . . . .	349	397	6,976	7,123	7,287	270	251	3,231	3,361	3,591
Connecticut . . . . .	1,207	1,240	21,888	22,791	28,944	630	814	9,095	10,199	10,081
Middle Atlantic . . . . .	15,611	21,519	277,903	281,547	291,857	12,794	10,789	123,134	121,352	122,307
New York <sup>1</sup> . . . . .	7,572	13,006	149,615	151,477	156,252	6,892	4,990	59,195	56,729	57,038
New Jersey . . . . .	3,452	3,660	52,776	53,391	55,181	2,014	2,130	23,899	24,784	25,405
Pennsylvania . . . . .	4,587	4,853	75,512	76,679	80,424	3,888	3,669	40,040	39,839	39,864
East North Central . . . . .	23,624	23,955	342,917	337,935	343,866	<sup>2</sup> 13,722	<sup>2</sup> 12,742	<sup>2</sup> 149,571	<sup>2</sup> 151,515	<sup>2</sup> 154,915
Ohio . . . . .	7,197	6,372	92,797	88,864	92,156	4,530	4,580	49,968	51,243	53,535
Indiana . . . . .	3,968	3,731	50,282	49,764	50,372	---	---	---	---	---
Illinois . . . . .	6,730	7,444	92,719	91,579	93,500	4,723	3,894	43,398	43,228	43,612
Michigan . . . . .	4,047	4,654	70,751	71,222	70,700	2,814	2,676	38,727	39,183	39,424
Wisconsin . . . . .	1,682	1,754	36,368	36,506	37,138	1,655	1,592	17,478	17,861	18,344
West North Central . . . . .	8,773	8,797	144,968	146,416	146,733	6,486	6,506	77,334	77,825	77,899
Minnesota . . . . .	1,668	1,170	32,510	31,444	32,299	1,685	1,636	16,217	16,848	16,295
Iowa . . . . .	1,406	1,481	22,732	25,006	22,088	744	837	10,930	10,903	10,956
Missouri . . . . .	3,161	2,680	44,223	44,133	45,428	1,597	1,855	26,324	26,582	25,653
North Dakota . . . . .	260	300	4,791	4,892	4,809	212	203	2,201	2,233	2,305
South Dakota . . . . .	400	422	7,451	7,427	7,559	270	269	3,022	2,890	2,926
Nebraska . . . . .	737	778	12,347	12,397	12,847	602	524	6,547	6,334	6,566
Kansas . . . . .	1,141	1,966	20,914	21,117	21,703	1,376	1,182	12,093	12,035	13,198
South Atlantic . . . . .	35,397	34,273	442,542	435,994	438,125	21,389	19,985	233,820	233,149	238,886
Delaware . . . . .	348	304	5,066	5,015	5,059	221	292	3,385	3,120	3,400
Maryland . . . . .	3,668	3,237	43,385	42,323	44,083	1,883	1,698	17,439	16,968	17,570
District of Columbia . . . . .	1,023	701	3,616	3,029	3,973	198	208	2,244	1,941	2,655
Virginia . . . . .	5,132	4,950	69,256	68,411	69,694	3,140	2,655	30,016	29,463	29,655
West Virginia . . . . .	1,134	740	10,986	13,056	12,264	885	678	9,179	9,690	9,867
North Carolina . . . . .	4,852	3,478	51,934	47,099	48,202	2,593	2,942	36,292	34,927	36,159
South Carolina . . . . .	3,290	3,884	50,872	52,547	53,304	1,187	1,192	15,301	15,110	15,920
Georgia . . . . .	5,342	4,866	62,879	61,577	63,417	2,776	3,567	37,001	38,349	39,586
Florida . . . . .	10,608	12,113	144,548	142,937	138,129	8,506	6,753	82,963	83,581	84,074
East South Central . . . . .	17,961	13,773	189,891	181,726	184,086	7,461	8,311	97,706	95,346	99,766
Kentucky . . . . .	3,712	3,166	47,322	45,544	49,922	1,459	2,122	22,211	21,840	24,185
Tennessee . . . . .	8,828	5,700	80,030	73,052	70,905	2,718	2,985	34,167	33,199	33,939
Alabama . . . . .	3,661	2,589	40,179	39,476	40,486	1,608	1,989	26,116	27,047	27,009
Mississippi . . . . .	1,760	2,318	22,360	23,654	22,773	1,676	1,215	15,212	13,260	14,633
West South Central . . . . .	24,412	28,746	299,488	288,756	287,492	<sup>2</sup> 9,133	<sup>2</sup> 8,417	<sup>2</sup> 138,386	<sup>2</sup> 138,168	<sup>2</sup> 140,812
Arkansas . . . . .	3,019	2,593	38,169	36,440	37,326	1,151	935	17,458	16,734	18,405
Louisiana . . . . .	2,851	2,481	41,750	36,179	35,386	---	---	---	---	---
Oklahoma . . . . .	2,488	2,568	29,297	30,495	31,783	1,934	1,882	21,855	22,784	23,447
Texas <sup>3</sup> . . . . .	16,054	21,104	190,272	185,642	182,997	6,048	5,600	99,073	98,650	98,960
Mountain . . . . .	20,793	19,918	270,841	254,803	243,718	7,663	<sup>2</sup> 6,592	88,761	<sup>2</sup> 76,806	<sup>2</sup> 78,760
Montana . . . . .	382	443	6,895	7,019	7,221	367	383	4,153	4,320	4,258
Idaho . . . . .	1,142	1,225	15,234	13,966	14,457	573	631	7,075	6,928	6,700
Wyoming . . . . .	372	413	4,825	4,603	4,900	262	352	3,071	3,065	3,227
Colorado . . . . .	2,354	2,402	34,367	34,036	33,672	1,471	1,674	18,795	19,138	19,508
New Mexico <sup>4,5</sup> . . . . .	838	1,008	12,159	12,618	12,984	835	778	9,882	9,944	9,737
Arizona <sup>1</sup> . . . . .	3,370	3,162	36,711	38,789	36,366	2,365	1,962	23,725	24,523	25,645
Utah . . . . .	1,423	1,408	20,325	20,588	19,895	601	812	8,999	8,888	9,685
Nevada . . . . .	10,912	9,857	140,325	123,184	114,223	1,189	---	13,061	---	---
Pacific . . . . .	22,517	22,227	295,057	294,621	324,842	<sup>2</sup> 4,731	<sup>2</sup> 3,787	<sup>2</sup> 54,616	<sup>2</sup> 51,454	<sup>2</sup> 53,993
Washington . . . . .	4,772	3,662	43,557	43,393	45,144	2,300	2,248	29,976	27,415	29,398
Oregon . . . . .	1,675	1,500	25,186	24,322	24,299	1,463	1,000	16,307	15,970	15,905
California . . . . .	14,197	15,204	202,827	203,897	232,021	---	---	---	---	---
Alaska . . . . .	505	508	5,560	5,515	5,735	303	198	3,354	3,193	3,678
Hawaii . . . . .	1,368	1,353	17,927	17,494	17,643	665	341	4,979	4,876	5,012

<sup>1</sup>Figures for marriages are marriage licenses issued for some counties.<sup>2</sup>Excludes figures for State(s) shown below as not available.<sup>3</sup>Figures include adjustments for varying length of reporting periods; see Technical notes.<sup>4</sup>Figures for marriages are marriage licenses issued.<sup>5</sup>Figures for divorces include estimates for some counties.

NOTES: Figures include all revisions received from the States. Cumulative figures for the current year reflect revisions received for previous months, and figures for earlier years may differ from those previously published.

**Table 4. Provisional number of deaths under 1 year and infant mortality rates: each division and State, 12 months ending with December 1993 and 1994**

[Data are estimates by State of residence; see Technical notes. Infant mortality rates are deaths under 1 year per 1,000 live births in specified area]

Area	12 months ending with December			
	1994		1993	
	Number	Rate	Number	Rate
New England . . . . .	1,788	15.9	1,139	6.2
Maine . . . . .	90	6.3	99	6.6
New Hampshire . . . . .	96	6.6	72	4.8
Vermont . . . . .	48	6.7	36	4.9
Massachusetts . . . . .	473	5.7	484	5.6
Rhode Island . . . . .	81	6.0	121	8.5
Connecticut . . . . .	---	---	327	7.1
Middle Atlantic . . . . .	4,487	8.1	4,673	8.3
New York . . . . .	2,366	8.5	2,312	8.3
New Jersey . . . . .	923	7.9	980	8.0
Pennsylvania . . . . .	1,198	7.6	1,381	8.7
East North Central . . . . .	5,684	8.8	6,046	9.4
Ohio . . . . .	1,435	8.9	1,386	8.8
Indiana . . . . .	793	9.5	790	9.3
Illinois . . . . .	1,725	9.1	1,975	10.3
Michigan . . . . .	1,200	8.6	1,338	9.3
Wisconsin . . . . .	531	7.7	557	8.0
West North Central . . . . .	1,943	7.7	2,056	7.9
Minnesota . . . . .	430	6.6	474	7.4
Iowa . . . . .	253	7.0	236	6.4
Missouri . . . . .	607	8.1	656	8.5
North Dakota . . . . .	54	6.3	62	7.1
South Dakota . . . . .	125	11.8	114	10.5
Nebraska . . . . .	181	7.9	202	8.8
Kansas . . . . .	293	8.8	312	8.2
South Atlantic . . . . .	5,873	8.9	6,350	9.4
Delaware . . . . .	73	7.0	88	8.3
Maryland . . . . .	638	8.9	709	9.4
District of Columbia . . . . .	168	17.8	181	18.5
Virginia . . . . .	766	8.0	812	8.5
West Virginia . . . . .	146	6.8	204	9.3
North Carolina . . . . .	1,019	10.0	1,032	10.3
South Carolina . . . . .	453	8.9	510	9.4
Georgia . . . . .	1,057	9.7	1,140	10.1
Florida . . . . .	1,553	8.1	1,674	8.7
East South Central . . . . .	2,109	9.1	2,318	10.0
Kentucky . . . . .	401	7.7	462	8.8
Tennessee . . . . .	668	8.8	726	9.9
Alabama . . . . .	601	9.9	629	9.9
Mississippi . . . . .	439	10.1	501	11.9
West South Central . . . . .	3,672	7.8	3,950	8.2
Arkansas . . . . .	276	8.0	324	9.5
Louisiana . . . . .	652	9.5	686	9.8
Oklahoma . . . . .	430	9.4	430	9.2
Texas <sup>2</sup> . . . . .	2,314	7.2	2,510	7.6
Mountain . . . . .	1,811	7.4	1,796	7.3
Montana . . . . .	91	8.2	91	7.9
Idaho . . . . .	127	7.3	128	7.5
Wyoming . . . . .	51	8.0	54	8.1
Colorado . . . . .	358	6.6	413	7.5
New Mexico . . . . .	250	8.9	256	9.3
Arizona . . . . .	567	8.6	497	7.0
Utah . . . . .	233	6.0	217	6.0
Nevada . . . . .	134	6.2	140	6.6
Pacific . . . . .	4,807	6.5	4,912	6.7
Washington . . . . .	432	5.4	494	6.9
Oregon . . . . .	294	7.0	282	6.7
California <sup>2</sup> . . . . .	3,884	6.7	3,925	6.7
Alaska . . . . .	71	5.9	79	7.5
Hawaii . . . . .	126	6.5	132	6.7

<sup>1</sup>Excludes figures for State shown below as not available.

<sup>2</sup>Figures include adjustments for varying length of reporting periods; see Technical notes.

NOTES: Figures include all revisions received from the States. Figures for the current year reflect revisions received for previous months, and figures for earlier years may differ from those previously published.

**Table 5. Provisional number of deaths and death rates, by age, race, and sex, and age-adjusted death rates by race and sex: United States, November 1993 and 1994, cumulative figures 1993 and 1994, and 12 months ending with November 1993 and 1994**

[Data are provisional, estimated from a 10-percent sample of deaths. Age-specific rates on an annual basis per 100,000 population in specified group; age-adjusted rates per 100,000 U.S. standard million population; see Technical notes. Due to rounding of estimates, figures may not add to totals. For method of computation and information on standard errors of the estimates, see Technical notes]

Age, race, and sex	November				January–November				12 months ending with November			
	1994		1993		1994		1993		1994		1993	
	Number	Rate	Number	Rate	Number	Rate	Number	Rate	Number	Rate	Number	Rate
All races, both sexes <sup>1</sup>												
All ages . . . . .	182,000	845.3	180,000	845.5	2,096,000	879.5	2,066,000	876.2	2,298,000	882.4	2,252,000	874.1
Under 1 year . . . . .	} 3,570	75.5	3,740	79.8	28,900	<sup>2</sup> 802.7	30,400	<sup>2</sup> 842.1	31,700	<sup>2</sup> 805.8	33,400	<sup>2</sup> 844.4
1–4 years . . . . .					6,660	45.8	6,520	45.2	7,160	45.1	6,910	43.8
5–14 years . . . . .					7,750	22.6	7,980	23.6	8,520	22.7	8,520	23.1
15–24 years . . . . .					3,100	104.9	2,810	94.9	32,850	99.8	32,400	98.3
25–34 years . . . . .	4,810	142.1	4,630	135.0	53,470	141.0	54,380	141.7	59,020	142.4	58,910	140.4
35–44 years . . . . .	7,890	228.8	7,680	227.2	92,370	242.3	88,040	236.1	100,880	242.2	96,200	236.2
45–54 years . . . . .	10,890	436.8	10,630	443.8	124,010	454.5	121,600	464.6	135,900	456.1	132,430	463.3
55–64 years . . . . .	19,060	1,101.7	19,090	1,108.1	220,550	1,146.6	221,420	1,156.3	241,440	1,148.6	242,000	1,156.9
65–74 years . . . . .	37,320	2,423.3	38,270	2,491.5	445,390	2,599.3	447,250	2,621.9	488,500	2,608.7	487,040	2,611.9
75–84 years . . . . .	52,470	5,803.0	50,820	5,698.2	590,560	5,885.3	580,410	5,891.4	647,860	5,904.7	632,790	5,877.1
85 years and over . . . . .	42,590	14,543.3	42,120	15,023.7	493,400	15,543.6	474,500	15,372.6	541,350	15,623.4	518,020	15,348.7
Not stated . . . . .	100	...	110	...	600	...	820	...	660	...	900	...
Age-adjusted rate <sup>3</sup> . . . . .	...	489.6	...	491.2	...	510.2	...	512.6	...	511.6	...	511.2
All races, male <sup>1</sup>												
All ages . . . . .	91,380	871.7	91,350	879.2	1,071,340	920.8	1,062,560	923.1	1,174,940	923.9	1,157,560	920.2
Under 1 year . . . . .	} 1,890	78.1	2,140	89.2	16,220	<sup>2</sup> 881.7	17,720	<sup>2</sup> 957.5	17,820	<sup>2</sup> 886.1	19,280	<sup>2</sup> 953.5
1–4 years . . . . .					3,950	53.0	3,700	50.3	4,230	52.0	3,850	47.7
5–14 years . . . . .					4,600	26.2	4,770	27.4	5,020	26.1	5,050	26.7
15–24 years . . . . .					2,460	163.1	2,110	139.5	25,290	150.4	24,360	144.6
25–34 years . . . . .	3,490	206.3	3,470	202.4	38,960	205.6	40,120	209.0	43,180	208.3	43,550	207.4
35–44 years . . . . .	5,450	318.7	4,980	297.1	64,500	341.1	60,640	328.1	70,510	341.2	66,310	328.4
45–54 years . . . . .	6,860	563.4	6,570	561.2	78,120	585.6	76,960	601.6	85,650	588.1	83,870	600.3
55–64 years . . . . .	11,630	1,415.1	11,380	1,391.1	135,180	1,479.4	134,380	1,479.5	147,720	1,479.1	146,510	1,476.8
65–74 years . . . . .	21,030	3,079.0	22,260	3,279.2	255,440	3,368.1	256,560	3,407.9	279,820	3,376.2	279,200	3,392.9
75–84 years . . . . .	24,610	7,050.2	24,500	7,177.5	287,980	7,471.5	287,940	7,661.9	316,570	7,512.3	313,820	7,641.1
85 years and over . . . . .	13,900	17,030.9	13,880	17,609.3	160,690	17,949.1	154,880	17,930.1	176,660	18,063.4	169,360	17,940.7
Not stated . . . . .	60	...	70	...	390	...	530	...	410	...	570	...
Age-adjusted rate <sup>3</sup> . . . . .	...	623.8	...	629.6	...	659.4	...	665.4	...	661.3	...	663.0
All races, female <sup>1</sup>												
All ages . . . . .	90,400	822.5	88,570	813.2	1,025,140	840.8	1,003,220	831.4	1,123,600	843.2	1,094,570	830.0
Under 1 year . . . . .	} 1,680	72.8	1,610	70.4	12,640	<sup>2</sup> 717.8	12,720	<sup>2</sup> 718.9	13,860	<sup>2</sup> 720.0	14,090	<sup>2</sup> 730.1
1–4 years . . . . .					2,710	38.3	2,820	40.4	2,930	37.7	3,060	39.7
5–14 years . . . . .					3,150	18.8	3,210	19.4	3,500	19.1	3,470	19.2
15–24 years . . . . .					640	44.2	700	48.3	7,560	46.9	8,040	49.8
25–34 years . . . . .	1,320	78.0	1,170	68.3	14,510	76.5	14,270	74.5	15,840	76.5	15,360	73.3
35–44 years . . . . .	2,440	140.3	2,700	158.4	27,870	145.0	27,400	145.9	30,370	144.7	29,890	145.6
45–54 years . . . . .	4,030	316.0	4,060	331.6	45,890	329.0	44,650	333.8	50,250	329.9	48,560	332.3
55–64 years . . . . .	7,430	818.1	7,710	852.2	85,370	845.5	87,040	864.8	93,710	849.4	95,490	868.3
65–74 years . . . . .	16,290	1,901.0	16,010	1,867.8	189,940	1,989.0	190,680	2,000.8	208,680	1,999.4	207,840	1,995.0
75–84 years . . . . .	27,860	5,018.7	26,320	4,780.9	302,580	4,896.3	292,470	4,799.6	331,290	4,902.2	318,970	4,788.6
85 years and over . . . . .	28,690	13,587.4	28,240	14,018.2	332,710	14,594.9	319,620	14,381.1	364,690	14,663.9	348,660	14,348.1
Not stated . . . . .	30	...	40	...	210	...	290	...	250	...	330	...
Age-adjusted rate <sup>3</sup> . . . . .	...	376.8	...	377.3	...	385.9	...	386.9	...	387.1	...	386.4
White												
All ages . . . . .	157,410	882.1	154,900	874.8	1,802,580	910.4	1,775,590	904.3	1,977,000	913.7	1,936,070	902.3
Under 1 year . . . . .	} 2,330	62.1	2,420	65.0	18,690	<sup>2</sup> 662.3	19,800	<sup>2</sup> 696.8	20,530	<sup>2</sup> 666.1	21,800	<sup>2</sup> 703.5
1–4 years . . . . .					4,430	38.4	4,550	39.9	4,790	38.1	4,840	38.8
5–14 years . . . . .					5,500	20.2	5,920	21.9	6,070	20.3	6,290	21.4
15–24 years . . . . .					1,960	83.0	1,930	81.4	23,210	88.2	22,490	85.2
25–34 years . . . . .	3,470	125.3	3,490	124.1	37,650	121.3	39,200	124.4	41,670	122.8	42,400	123.1
35–44 years . . . . .	5,770	200.7	5,430	192.4	65,700	206.8	62,510	200.6	71,810	206.8	68,350	200.8
45–54 years . . . . .	8,580	401.8	8,220	399.9	95,530	408.6	93,680	416.6	104,530	409.4	101,930	415.1
55–64 years . . . . .	15,810	1,055.8	15,750	1,053.9	180,300	1,082.3	180,880	1,087.8	197,390	1,084.3	197,780	1,088.8
65–74 years . . . . .	32,420	2,370.0	32,880	2,406.3	385,310	2,531.0	386,720	2,546.2	422,550	2,540.1	421,260	2,537.7
75–84 years . . . . .	47,690	5,815.7	45,930	5,680.7	531,500	5,845.7	522,560	5,851.3	583,400	5,868.6	569,800	5,838.1
85 years and over . . . . .	39,290	14,722.2	38,780	15,146.8	454,350	15,679.1	436,730	15,504.5	498,730	15,757.7	476,660	15,476.0
Not stated . . . . .	90	...	70	...	400	...	550	...	440	...	620	...
Age-adjusted rate <sup>3</sup> . . . . .	...	466.3	...	465.3	...	482.7	...	484.5	...	484.2	...	483.3

See footnotes at end of table.

**Table 5. Provisional number of deaths and death rates, by age, race, and sex, and age-adjusted death rates by race and sex: United States, November 1993 and 1994, cumulative figures 1993 and 1994, and 12 months ending with November 1993 and 1994—Con.**

[Data are provisional, estimated from a 10-percent sample of deaths. Age-specific rates on an annual basis per 100,000 population in specified group; age-adjusted rates per 100,000 U.S. standard million population; see Technical notes. Due to rounding of estimates, figures may not add to totals. For method of computation and information on standard errors of the estimates, see Technical notes]

Age, race, and sex	November				January–November				12 months ending with November							
	1994		1993		1994		1993		1994		1993					
	Number	Rate	Number	Rate	Number	Rate	Number	Rate	Number	Rate	Number	Rate				
<b>White male</b>																
All ages . . . . .	77,990	891.2	77,810	896.2	910,020	937.1	903,890	938.9	998,470	940.9	985,020	936.3				
Under 1 year . . . . .	} 1,200	62.4	1,350	70.7	10,340	<sup>2</sup> 715.8	11,400	<sup>2</sup> 782.9	11,390	<sup>2</sup> 721.8	12,490	<sup>2</sup> 785.5				
1–4 years . . . . .					2,650	45.0	2,610	44.4	2,870	44.6	2,720	42.5				
5–14 years . . . . .					3,230	22.9	3,620	26.1	3,550	23.2	3,810	25.2				
15–24 years . . . . .					1,500	123.8	1,440	118.4	17,560	130.0	16,620	122.5	18,930	128.3	17,860	120.5
25–34 years . . . . .					2,590	185.1	2,600	183.1	27,950	178.3	29,320	184.0	31,000	180.9	31,760	182.4
35–44 years . . . . .	4,000	277.5	3,630	256.6	46,470	291.4	44,020	282.0	50,860	292.1	48,170	282.3				
45–54 years . . . . .	5,420	514.2	5,160	508.5	60,680	525.7	59,880	539.5	66,460	527.2	65,250	538.3				
55–64 years . . . . .	9,760	1,356.8	9,460	1,318.9	111,650	1,395.2	110,860	1,390.7	121,950	1,394.5	120,870	1,388.0				
65–74 years . . . . .	18,520	3,031.0	19,430	3,196.7	222,520	3,280.1	224,630	3,330.1	243,690	3,287.8	244,280	3,313.6				
75–84 years . . . . .	22,280	7,017.2	22,110	7,127.8	259,930	7,423.2	259,830	7,614.1	285,980	7,470.7	283,520	7,603.1				
85 years and over . . . . .	12,670	17,166.1	12,590	17,647.3	146,780	18,135.4	140,760	18,031.6	161,520	18,250.8	153,940	18,046.9				
Not stated . . . . .	50	...	40	...	260	...	330	...	280	...	360	...				
Age-adjusted rate <sup>3</sup> . . . . .	...	591.1	...	596.2	...	622.4	...	628.9	...	624.3	...	626.7				
<b>White female</b>																
All ages . . . . .	79,420	873.4	77,090	854.2	892,560	884.6	871,700	870.9	978,520	887.5	951,050	869.6				
Under 1 year . . . . .	} 1,130	61.9	1,070	59.0	8,350	<sup>2</sup> 607.6	8,400	<sup>2</sup> 607.6	9,140	<sup>2</sup> 607.7	9,310	<sup>2</sup> 617.0				
1–4 years . . . . .					1,790	31.8	1,940	34.7	1,930	31.5	2,120	34.9				
5–14 years . . . . .					2,280	17.1	2,300	17.5	2,520	17.3	2,490	17.4				
15–24 years . . . . .					460	40.0	490	42.4	5,650	44.1	5,870	45.6	6,140	43.9	6,470	46.0
25–34 years . . . . .					880	64.2	880	63.2	9,700	63.2	9,880	63.4	10,670	63.6	10,640	62.5
35–44 years . . . . .	1,760	122.7	1,810	128.6	19,230	121.4	18,490	118.9	20,950	121.0	20,180	118.8				
45–54 years . . . . .	3,160	292.2	3,050	293.0	34,850	294.4	33,800	296.7	38,070	294.5	36,690	295.1				
55–64 years . . . . .	6,050	777.5	6,290	809.4	68,650	793.0	70,020	809.0	75,450	797.6	76,910	813.3				
65–74 years . . . . .	13,900	1,836.4	13,450	1,772.9	162,790	1,928.9	162,090	1,919.7	178,860	1,939.3	176,990	1,918.0				
75–84 years . . . . .	25,410	5,056.5	23,820	4,780.0	271,570	4,857.7	262,720	4,761.7	297,420	4,865.4	286,280	4,746.8				
85 years and over . . . . .	26,620	13,787.8	26,180	14,175.5	307,570	14,728.5	295,970	14,535.4	337,210	14,789.9	322,720	14,491.2				
Not stated . . . . .	30	...	30	...	140	...	220	...	160	...	260	...				
Age-adjusted rate <sup>3</sup> . . . . .	...	360.9	...	356.8	...	366.0	...	365.2	...	367.2	...	364.9				
<b>Black</b>																
All ages . . . . .	21,980	814.0	22,120	831.8	260,360	871.8	257,730	876.8	284,690	872.3	280,560	873.5				
Under 1 year . . . . .	} 1,070	145.4	1,140	156.6	9,030	<sup>2</sup> 1,557.5	9,810	<sup>2</sup> 1,671.3	9,910	<sup>2</sup> 1,555.7	10,630	<sup>2</sup> 1,653.2				
1–4 years . . . . .					1,880	81.5	1,680	73.1	1,990	79.2	1,740	69.5				
5–14 years . . . . .					1,830	34.4	1,720	33.2	2,000	34.6	1,890	33.4				
15–24 years . . . . .					1,070	240.2	720	163.2	8,490	171.7	8,660	176.7	9,270	171.9	9,290	174.0
25–34 years . . . . .					1,220	272.5	990	220.1	14,050	281.5	13,550	270.1	15,400	282.4	14,750	269.0
35–44 years . . . . .	1,940	463.3	2,070	509.8	24,570	534.2	23,330	524.0	26,700	531.3	25,360	521.8				
45–54 years . . . . .	2,140	830.5	2,070	844.0	25,350	902.6	25,120	940.3	27,910	910.3	27,440	940.7				
55–64 years . . . . .	2,980	1,722.4	2,890	1,695.4	35,400	1,852.1	35,940	1,903.5	38,700	1,853.4	39,210	1,900.6				
65–74 years . . . . .	4,460	3,380.9	4,910	3,747.7	53,400	3,641.3	53,610	3,697.8	58,630	3,655.2	58,180	3,675.3				
75–84 years . . . . .	4,260	6,313.0	4,250	6,336.8	52,030	6,901.7	50,790	6,832.6	56,660	6,876.2	55,410	6,807.1				
85 years and over . . . . .	2,820	12,707.4	3,030	15,108.6	34,150	15,044.2	33,230	14,855.9	37,310	15,166.7	36,370	14,844.9				
Not stated . . . . .	10	...	40	...	180	...	270	...	200	...	280	...				
Age-adjusted rate <sup>3</sup> . . . . .	...	729.7	...	739.7	...	778.7	...	786.9	...	779.9	...	783.7				
<b>Black male</b>																
All ages . . . . .	12,050	941.1	11,790	934.8	141,960	1,002.0	140,420	1,007.6	155,050	1,001.4	152,610	1,002.2				
Under 1 year . . . . .	} 600	160.7	700	189.7	5,300	<sup>2</sup> 1,801.5	5,820	<sup>2</sup> 1,959.3	5,790	<sup>2</sup> 1,792.6	6,250	<sup>2</sup> 1,923.1				
1–4 years . . . . .					1,040	90.3	940	81.3	1,090	85.6	960	75.8				
5–14 years . . . . .					1,140	42.4	950	35.4	1,210	41.2	1,050	36.6				
15–24 years . . . . .					890	400.0	570	258.7	6,790	275.6	6,870	280.8	7,430	275.7	7,370	276.4
25–34 years . . . . .					810	382.6	740	347.7	9,750	412.8	9,630	405.9	10,760	416.9	10,530	406.1
35–44 years . . . . .	1,320	675.9	1,240	655.4	16,630	774.6	15,310	739.0	18,060	770.5	16,630	734.9				
45–54 years . . . . .	1,370	1,173.8	1,210	1,088.1	15,590	1,222.6	15,480	1,276.8	17,140	1,233.1	16,880	1,275.9				
55–64 years . . . . .	1,720	2,287.1	1,610	2,166.8	20,750	2,492.5	20,960	2,551.2	22,690	2,493.4	22,810	2,540.1				
65–74 years . . . . .	2,250	4,104.2	2,570	4,737.6	29,090	4,783.4	28,400	4,731.3	31,920	4,800.0	31,010	4,734.4				
75–84 years . . . . .	2,050	8,397.9	1,990	8,263.4	24,200	8,923.0	23,970	8,974.6	26,270	8,845.1	25,920	8,846.4				
85 years and over . . . . .	1,020	15,910.3	1,130	19,363.8	11,540	17,497.2	11,880	18,060.9	12,570	17,704.2	12,980	18,027.8				
Not stated . . . . .	10	...	30	...	120	...	200	...	120	...	210	...				
Age-adjusted rate <sup>3</sup> . . . . .	...	975.2	...	964.9	...	1,044.2	...	1,050.7	...	1,045.0	...	1,045.5				

See footnotes at end of table.

**Table 5. Provisional number of deaths and death rates, by age, race, and sex, and age-adjusted death rates by race and sex: United States, November 1993 and 1994, cumulative figures 1993 and 1994, and 12 months ending with November 1993 and 1994—Con.**

[Data are provisional, estimated from a 10-percent sample of deaths. Age-specific rates on an annual basis per 100,000 population in specified group; age-adjusted rates per 100,000 U.S. standard million population; see Technical notes. Due to rounding of estimates, figures may not add to totals. For method of computation and information on standard errors of the estimates, see Technical notes]

Age, race, and sex	November				January–November				12 months ending with November							
	1994		1993		1994		1993		1994		1993					
	Number	Rate	Number	Rate	Number	Rate	Number	Rate	Number	Rate	Number	Rate				
Black female																
All ages . . . . .	9,930	699.4	10,330	739.0	118,410	754.4	117,310	758.9	129,640	755.8	127,950	757.5				
Under 1 year . . . . .	} 460	126.8	440	122.5	3,730	<sup>2</sup> 1,303.0	3,990	<sup>2</sup> 1,376.1	4,120	<sup>2</sup> 1,312.1	4,380	<sup>2</sup> 1,377.4				
1–4 years . . . . .					850	76.0	740	65.6	910	73.4	780	63.1				
5–14 years . . . . .					690	26.4	780	30.5	790	27.7	850	30.4				
15–24 years . . . . .					180	80.7	150	67.9	1,690	68.4	1,790	73.1	1,850	68.5	1,920	71.8
25–34 years . . . . .					420	178.0	250	105.5	4,300	163.5	3,920	147.8	4,640	161.5	4,220	146.0
35–44 years . . . . .	620	277.4	830	382.8	7,940	323.9	8,020	337.1	8,640	322.3	8,730	336.2				
45–54 years . . . . .	760	539.2	860	641.5	9,750	634.7	9,640	659.2	10,770	642.6	10,560	662.5				
55–64 years . . . . .	1,270	1,298.5	1,290	1,341.4	14,650	1,358.5	14,990	1,405.9	16,010	1,359.1	16,400	1,407.7				
65–74 years . . . . .	2,200	2,853.6	2,340	3,048.2	24,310	2,833.3	25,210	2,966.0	26,710	2,844.5	27,170	2,927.8				
75–84 years . . . . .	2,210	5,131.4	2,260	5,257.5	27,830	5,770.0	26,820	5,630.4	30,380	5,764.7	29,490	5,660.3				
85 years and over . . . . .	1,800	11,406.2	1,900	13,362.2	22,600	14,054.2	21,350	13,516.2	24,750	14,142.9	23,390	13,520.2				
Not stated . . . . .	–	...	10	...	60	...	70	...	80	...	70	...				
Age-adjusted rate <sup>3</sup> . . . . .	...	537.5	...	569.1	...	573.3	...	583.8	...	574.6	...	582.2				

<sup>1</sup>Includes races other than white and black.

<sup>2</sup>Death rates under 1 year (based on population estimates) differ from infant mortality rates (based on live births); see table 9 for infant mortality rates.

<sup>3</sup>For method of computation, see Technical notes.

NOTES: Figures include all revisions received from the States. Cumulative and 12-month figures for the current year reflect revisions received for previous months, and figures for earlier years may differ from those previously published. Data include adjustments for New York City and Oklahoma, which are not included in the sample for November 1994.





**Table 6. Provisional number of deaths and death rates for 72 selected causes and Human immunodeficiency virus infection: United States, November 1993 and 1994, cumulative figures 1993 and 1994, and 12 months ending with November 1993 and 1994—Con.**

[Data are provisional, estimated from a 10-percent sample of deaths. Rates on an annual basis per 100,000 estimated population. Due to rounding of estimates, figures may not add to totals. For method of computation and information on standard errors of the estimates, see Technical notes. For explanation of asterisk preceding cause-of-death codes, see Technical notes.]

Cause of death (Ninth Revision, International Classification of Diseases, 1975)	November		November		January–November		January–November		12 months ending with November		12 months ending with November		
	1994	1993	1994	1993	1994	1993	1994	1993	1994	1993	1994	1993	
	Number	Rate	Number	Rate	Number	Rate	Number	Rate	Number	Rate	Number	Rate	
Cerebral embolism . . . . .	434.1	20	*	30	*	820	0.3	440	0.2	870	0.3	510	0.2
All other and late effects of cerebrovascular diseases . . . . .	430,433,435–438	9,030	42.0	8,900	41.8	106,700	44.8	102,040	43.3	116,570	44.8	111,160	43.1
Atherosclerosis . . . . .	.440	1,400	6.5	1,370	6.4	16,020	6.7	15,700	6.7	17,380	6.7	17,020	6.6
Other diseases of arteries, arterioles, and capillaries . . . . .	.441–448	2,270	10.6	2,100	9.9	24,380	10.2	24,060	10.2	26,730	10.3	26,150	10.1
Acute bronchitis and bronchiolitis . . . . .	.466	10	*	20	*	500	0.2	510	0.2	550	0.2	560	0.2
Pneumonia and influenza . . . . .	.480–487	5,640	26.3	5,530	26.0	75,060	31.5	71,900	30.5	82,870	31.8	77,800	30.2
Pneumonia . . . . .	.480–486	5,640	26.3	5,490	25.8	73,810	31.0	71,150	30.2	81,450	31.3	77,030	29.9
Influenza . . . . .	.487	—	*	40	*	1,250	0.5	750	0.3	1,420	0.5	770	0.3
Chronic obstructive pulmonary diseases and allied conditions . . . . .	.490–496	7,650	35.6	7,830	36.8	93,470	39.2	91,790	38.9	102,300	39.3	99,530	38.6
Bronchitis, chronic and unspecified . . . . .	.490–491	160	0.7	230	1.1	3,220	1.3	3,190	1.4	3,630	1.4	3,540	1.4
Emphysema . . . . .	.492	1,380	6.4	1,480	6.9	15,920	6.7	16,640	7.1	17,250	6.6	18,140	7.0
Asthma . . . . .	.493	410	1.9	340	1.6	4,920	2.1	4,410	1.9	5,370	2.1	4,780	1.9
Other chronic obstructive pulmonary diseases and allied conditions . . . . .	.494–496	5,700	26.5	5,790	27.2	69,410	29.1	67,540	28.6	76,050	29.2	73,070	28.4
Ulcer of stomach and duodenum . . . . .	.531–533	440	2.0	470	2.2	5,630	2.4	5,230	2.2	5,950	2.3	5,630	2.2
Appendicitis . . . . .	.540–543	10	*	40	*	280	0.1	430	0.2	300	0.1	450	0.2
Hernia of abdominal cavity and intestinal obstruction without mention of hernia . . . . .	.550–553,560	530	2.5	450	2.1	5,440	2.3	5,230	2.2	5,980	2.3	5,780	2.2
Chronic liver disease and cirrhosis . . . . .	.571	2,140	10.0	2,330	10.9	23,170	9.7	22,450	9.5	25,390	9.7	24,660	9.6
Cholelithiasis and other disorders of gallbladder . . . . .	.574–575	170	0.8	240	1.1	2,370	1.0	2,510	1.1	2,530	1.0	2,730	1.1
Nephritis and nephrotic syndrome, and nephrosis . . . . .	.580–589	2,380	11.1	1,910	9.0	22,550	9.5	22,810	9.7	24,400	9.4	24,980	9.7
Acute glomerulonephritis and nephrotic syndrome . . . . .	.580–581	—	*	30	*	230	0.1	290	0.1	270	0.1	300	0.1
Chronic glomerulonephritis, nephritis and nephropathy, not specified as acute or chronic, and renal sclerosis, unspecified . . . . .	.582–583,587	210	1.0	100	*	1,470	0.6	1,470	0.6	1,570	0.6	1,630	0.6
Renal failure, disorders resulting from impaired renal function, and small kidney of unknown cause . . . . .	.584–586,588–589	2,170	10.1	1,780	8.4	20,840	8.8	21,050	8.9	22,550	8.7	23,050	8.9
Infections of kidney . . . . .	.590	60	*	100	*	960	0.4	910	0.4	1,040	0.4	980	0.4
Hyperplasia of prostate . . . . .	.600	60	*	60	*	380	0.2	430	0.2	400	0.2	430	0.2
Complications of pregnancy, childbirth, and the puerperium . . . . .	.630–676	30	*	30	*	340	0.1	260	0.1	380	0.1	310	0.1
Pregnancy with abortive outcome . . . . .	.630–638	—	*	10	*	60	*	60	*	60	*	60	*
Other complications of pregnancy, childbirth, and the puerperium . . . . .	.640–676	30	*	20	*	280	0.1	200	0.1	320	0.1	250	0.1
Congenital anomalies . . . . .	.740–759	1,010	4.7	840	3.9	10,540	4.4	10,590	4.5	11,560	4.4	11,610	4.5
Certain conditions originating in the perinatal period . . . . .	.760–779	1,000	4.6	1,260	5.9	12,890	5.4	14,190	6.0	14,320	5.5	15,330	5.9
Birth trauma, intrauterine hypoxia, birth asphyxia, and respiratory distress syndrome . . . . .	.767–769	180	0.8	270	1.3	2,200	0.9	2,660	1.1	2,460	0.9	2,880	1.1
Other conditions originating in the perinatal period . . . . .	.760–766,770–779	820	3.8	990	4.6	10,690	4.5	11,530	4.9	11,860	4.6	12,440	4.8
Symptoms, signs, and ill-defined conditions . . . . .	.780–799	2,930	13.6	3,000	14.1	37,020	15.5	35,710	15.1	40,610	15.6	38,870	15.1
All other diseases . . . . .	.Residual	16,890	78.6	16,100	75.7	186,270	78.2	179,610	76.2	204,120	78.4	195,600	75.9
Accidents and adverse effects . . . . .	.E800–E949	7,250	33.8	6,930	32.6	81,090	34.0	79,270	33.6	88,840	34.1	85,410	33.1
Motor vehicle accidents . . . . .	.E810–E825	3,560	16.6	3,620	17.0	38,510	16.1	37,030	15.7	42,260	16.2	39,950	15.5
All other accidents and adverse effects . . . . .	.E800–E807,E826–E949	3,680	17.1	3,320	15.6	42,580	17.9	42,230	17.9	46,580	17.9	45,460	17.6
Suicide . . . . .	.E950–E959	2,770	12.9	2,500	11.7	28,060	11.8	27,370	11.6	30,680	11.8	29,680	11.5
Homicide and legal intervention . . . . .	.E960–E978	1,960	9.1	1,850	8.7	21,840	9.2	22,610	9.6	24,010	9.2	24,540	9.5
All other external causes . . . . .	.E980–E999	310	1.4	190	0.9	2,220	0.9	2,440	1.0	2,380	0.9	2,610	1.0
Human immunodeficiency virus infection <sup>2</sup> . . . . .	*042–*044	3,160	14.7	3,050	14.3	36,500	15.3	33,260	14.1	40,210	15.4	36,460	14.2

<sup>1</sup>Includes data for deaths due to Human immunodeficiency virus infection (category numbers \*042–\*044) shown separately below; see Technical notes.

<sup>2</sup>Included in All other infectious and parasitic diseases shown above.

NOTES: Figures include all revisions received from the States. Cumulative and 12-month figures for the current year reflect revisions received for previous months, and figures for earlier years may differ from those previously published. Data include adjustments for New York City and Oklahoma, which are not included in the sample for November 1994.

**Table 7. Provisional number of deaths and death rates for 16 selected subcategories of Malignant neoplasms, including neoplasms of lymphatic and hematopoietic tissues: United States, November 1993 and 1994, cumulative figures 1993 and 1994, and 12 months ending with November 1993 and 1994**

[Data are provisional, estimated from a 10-percent sample of deaths. Rates on an annual basis per 100,000 estimated population. Due to rounding of estimates, figures may not add to totals. For method of computation and information on standard errors of the estimates, see Technical notes]

Cause of death (Ninth Revision, International Classification of Diseases, 1975)	November				January–November				12 months ending with November			
	1994		1993		1994		1993		1994		1993	
	Number	Rate	Number	Rate	Number	Rate	Number	Rate	Number	Rate	Number	Rate
Malignant neoplasms, including neoplasms of lymphatic and hematopoietic tissues <sup>1</sup> . . . . .140–208	44,220	205.9	42,850	201.3	494,500	207.5	484,980	205.7	540,790	207.7	529,060	205.3
Malignant neoplasm of esophagus . . . . .150	830	3.9	870	4.1	10,370	4.3	9,280	3.9	11,320	4.3	10,170	3.9
Malignant neoplasm of stomach . . . . .151	1,160	5.4	1,090	5.1	12,410	5.2	12,720	5.4	13,530	5.2	13,820	5.4
Malignant neoplasms of colon, rectum, rectosigmoid junction, and anus . . . . .153,154	5,190	24.2	4,670	21.9	53,900	22.6	51,430	21.8	59,050	22.7	56,330	21.9
Malignant neoplasm of pancreas . . . . .157	2,200	10.2	1,760	8.3	24,500	10.3	24,190	10.3	26,890	10.3	26,330	10.2
Malignant neoplasms of trachea, bronchus, and lung . . . . .162	12,110	56.4	11,880	55.8	136,540	57.3	135,670	57.5	149,760	57.5	148,170	57.5
Malignant melanoma of skin . . . . .172	580	2.7	640	3.0	6,680	2.8	6,000	2.5	7,450	2.9	6,420	2.5
Malignant neoplasm of cervix uteri . . . . .180	380	1.8	400	1.9	4,200	1.8	4,350	1.8	4,660	1.8	4,670	1.8
Malignant neoplasms of body of uterus and of uterus, part unspecified . . . . .179,182	480	2.2	440	2.1	5,430	2.3	5,470	2.3	5,950	2.3	5,820	2.3
Malignant neoplasm of ovary . . . . .183.0	1,010	4.7	1,140	5.4	12,510	5.2	11,940	5.0	13,320	5.1	13,120	5.1
Malignant neoplasm of prostate . . . . .185	2,800	13.0	2,760	13.0	32,770	13.7	32,270	13.7	35,850	13.8	34,940	13.6
Malignant neoplasm of bladder . . . . .188	640	3.0	950	4.5	9,740	4.1	10,040	4.3	10,720	4.1	10,990	4.3
Malignant neoplasms of kidney and other and unspecified urinary organs . . . . .189	920	4.3	980	4.6	10,310	4.3	10,000	4.2	11,420	4.4	10,800	4.2
Malignant neoplasms of brain and other and unspecified parts of nervous system . . . . .191,192	1,050	4.9	890	4.2	11,090	4.6	10,300	4.4	11,940	4.6	11,160	4.3
Hodgkin's disease . . . . .201	110	0.5	120	0.6	1,390	0.6	1,520	0.6	1,470	0.6	1,670	0.6
Malignant lymphoma other than Hodgkin's disease . . . . .200,202	1,940	9.0	1,550	7.3	20,650	8.7	19,620	8.3	22,370	8.6	21,490	8.3
Multiple myeloma and other immunoproliferative neoplasms . . . . .203	1,020	4.7	870	4.1	9,520	4.0	9,180	3.9	10,220	3.9	10,050	3.9

<sup>1</sup>Includes figures for subcategories not shown below.

NOTES: Figures include all revisions received from the States. Cumulative and 12-month figures for the current year reflect revisions received for previous months, and figures for earlier years may differ from those previously published. Data include adjustments for New York City and Oklahoma, which are not included in the sample for November 1994.

**Table 8. Provisional number of deaths and death rates for injury by firearms: United States, November 1993 and 1994, cumulative figures 1993 and 1994, and 12 months ending with November 1993 and 1994**

[Data are provisional, estimated from a 10-percent sample of deaths. Rates on an annual basis per 100,000 estimated population. Due to rounding of estimates, figures may not add to totals. For method of computation and information on standard errors of the estimates, see Technical notes]

Cause of death (Ninth Revision, International Classification of Diseases, 1975)	November				January–November				12 months ending with November			
	1994		1993		1994		1993		1994		1993	
	Number	Rate	Number	Rate	Number	Rate	Number	Rate	Number	Rate	Number	Rate
Injury by firearms . . . . .E922,E955.0–E955.4,E965.0–965.4,E970,E985.0–E985.4	3,620	16.9	3,160	14.8	35,470	14.9	35,150	14.9	39,120	15.0	37,990	14.7
Accident caused by firearm missile . . . . .E922	200	0.9	110	0.5	1,360	0.6	1,450	0.6	1,590	0.6	1,580	0.6
Suicide by firearms . . . . .E955.0–E955.4	1,940	9.0	1,630	7.7	18,070	7.6	17,080	7.2	19,800	7.6	18,450	7.2
Homicide and legal intervention by firearms . . . . .E965.0–E965.4,E970	1,450	6.7	1,410	6.6	15,810	6.6	16,290	6.9	17,470	6.7	17,600	6.8
Injury by firearms, undetermined whether accidentally or purposely inflicted . . . . .E985.0–E985.4	20	*	20	*	240	0.1	340	0.2	270	0.1	360	0.1

NOTES: Figures include all revisions received from the States. Cumulative and 12-month figures for the current year reflect revisions received for previous months, and figures for earlier years may differ from those previously published. Data include adjustments for New York City and Oklahoma, which are not included in the sample for November 1994.

**Table 9. Provisional number of deaths under 1 year and infant mortality rates, by age and for 10 selected causes: United States, November 1993 and 1994, cumulative figures 1993 and 1994, and 12 months ending with November 1993 and 1994**

[Data are provisional, estimated from a 10-percent sample of deaths. Rates on an annual basis per 100,000 live births. Due to rounding of estimates, figures may not add to totals. For method of computation and information on standard errors of the estimates, see Technical notes]

Age and cause of death (Ninth Revision, International Classification of Diseases, 1975)	November		January–November				12 months ending with November					
	1994		1993		1994		1993		1994		1993	
	Number	Rate	Number	Rate	Number	Rate	Number	Rate	Number	Rate	Number	Rate
Total, under 1 year . . . . .	2,500	780.5	2,600	814.0	28,900	792.1	30,400	825.2	31,700	799.1	33,400	831.1
Under 28 days . . . . .	1,470	461.7	1,780	553.0	17,970	492.8	19,540	529.6	19,820	499.5	21,270	529.7
28 days to 11 months . . . . .	1,020	320.4	840	261.0	10,890	298.7	10,900	295.4	11,860	298.9	12,100	301.4
Certain gastrointestinal diseases . . . . .008–009,535,555–558	20	*	20	*	240	6.6	190	5.1	250	6.3	210	5.2
Pneumonia and influenza . . . . .480–487	10	*	30	*	390	10.7	460	12.5	390	9.8	490	12.2
Congenital anomalies . . . . .740–759	610	191.6	530	164.7	6,210	170.3	6,200	168.0	6,740	169.9	6,860	170.9
Disorders relating to short gestation and unspecified low birthweight . . . . .765	240	75.4	300	93.2	3,500	96.0	3,770	102.2	3,820	96.3	4,100	102.1
Birth trauma . . . . .767	–	*	–	*	200	5.5	140	3.8	200	5.0	140	3.5
Intrauterine hypoxia and birth asphyxia . . . . .768	80	*	40	*	520	14.3	570	15.4	600	15.1	650	16.2
Respiratory distress syndrome . . . . .769	110	34.5	230	71.5	1,440	39.5	1,910	51.8	1,620	40.8	2,050	51.1
Other conditions originating in the perinatal period . . . . .760–764,766,770–779	560	175.9	680	211.3	7,010	192.2	7,610	206.3	7,820	197.1	8,200	204.2
Sudden infant death syndrome . . . . .798.0	350	109.9	360	111.8	3,410	93.5	3,970	107.6	3,730	94.0	4,430	110.3
All other causes . . . . .Residual	520	163.3	430	133.6	5,930	162.6	5,610	152.1	6,510	164.1	6,230	155.2

NOTES: Figures include all revisions received from the States. Cumulative and 12-month figures for the current year reflect revisions received for previous months, and figures for earlier years may differ from those previously published. Data include adjustments for New York City and Oklahoma, which are not included in the sample for November 1994.

## Technical notes

### Nature and sources of data

Data in this report are provisional unless otherwise specified and include only events occurring within the United States. Mortality data exclude fetal deaths.

Birth, death, and infant death figures in tables 2 and 4 for each State are estimates by State of residence. These estimates are derived by applying adjustment ratios to the actual counts of certificates for all events occurring in the State and received in registration offices during a 1-month period, regardless of date of the event. The adjustment ratios for each data year represent the observed relationship between final State occurrence and residence figures for the three most recent years for which final data were available and are expressed as a single ratio for each State. As in previous years, monthly State marriage and divorce figures represent the actual count of all events occurring in the State (State of occurrence) that were received in the registration offices during the 1-month period. Delay in the receipt of certificates in a registration office may result in a low State figure for a given month followed by a high figure for the month(s) in which the delayed records are received. Data for previous months and cumulative data include revised figures received from the States.

Figures for births, deaths, and infant deaths for California shown in tables 2 and 4 contain adjustments for varying lengths of State reporting periods. Figures for Texas for all events shown in tables 2-4 also are adjusted for varying lengths of State reporting periods. The figures for both States are adjusted by the ratio between the number of days in the data month and the number of days in the State reporting period. The adjusted figures are included in the U.S. totals shown elsewhere in this report.

U.S. totals for births, deaths, and infant deaths are based on the State estimates by State of residence and, therefore, in effect, exclude events to nonresidents of the United States. Events to nonresidents of the United States are

included in all marriage and divorce figures. The effect of excluding events to nonresidents from the U.S. totals is small.

Provisional totals for the United States include estimates for State data shown as not available. Provisional totals for births and marriages for the entire United States include adjustments for observed differences between provisional and final monthly figures.

Divorce figures include reported annulments. The monthly national divorce estimate is obtained by multiplying the total for the reporting areas by the ratio observed between the most recent final annual divorce total for the United States and the provisional total for the reporting areas combined.

*Random variation*—Although the counts in this report are not subject to sampling variability (except the Current Mortality Sample), they may be affected by random variation. When the number of events is small and the probability of such an event is small, considerable caution must be observed in interpreting the data. Such infrequent events may be assumed to follow a Poisson probability distribution. For this distribution a simple approximation may be used to estimate the random variation as follows:

If  $N$  is the number of events in the population and  $R$  is the corresponding rate, the chances are 19 in 20 that

$$1. N - 2\sqrt{N} \text{ and } N + 2\sqrt{N}$$

covers the "true" number of events.

$$2. R - 2 \frac{R}{\sqrt{N}} \text{ and } R + 2 \frac{R}{\sqrt{N}}$$

covers the "true" rate.

If the rate  $R_1$  corresponding to  $N_1$  events is compared with the rate  $R_2$  corresponding to  $N_2$  events, the difference between the two rates may be regarded as statistically significant at the 0.05 level if it exceeds

$$2 \sqrt{\frac{R_1^2}{N_1} + \frac{R_2^2}{N_2}}$$

Additional information on random variation in numbers of events, rates, and ratios may be found in the technical

appendixes of *Vital Statistics of the United States, 1989*, Volumes I and II.

### Rates

Rates are on an annual basis and, except for infant mortality rates, are per 1,000 or 100,000 estimated population residing in the United States. The populations used for computing these rates are furnished by the U.S. Bureau of the Census. Rates shown in this report were computed using populations comparable to those used for final data. Monthly rates are based on populations estimated for the specific month. Year-to-date rates are averages of monthly rates that have been weighted by the number of days in the corresponding months. Rates for 12-month periods are the sum of events for the period per population estimated at the midpoint of the period.

Infant mortality rates are deaths under 1 year of age for the specified period (monthly, year-to-date, or 12-month period) per 1,000 or 100,000 live births. Births used for computing monthly and year-to-date infant mortality rates are adjusted for monthly variation in the number of births. Births used to compute 12-month rates do not contain this adjustment. Births used for computing infant mortality rates are not corrected for observed differences between provisional and final monthly figures as described in Nature and sources of data. Because monthly infant mortality rates are based on relatively few events, they are highly variable. Therefore, comparisons of monthly infant mortality rates should be interpreted cautiously; see Random variation.

Age-adjusted death rates are used to compare relative mortality risks across groups and over time. However, they should be viewed as constructs or indexes rather than as direct or actual measures of mortality risk. Statistically, they are weighted averages of the age-specific death rates, where the weights represent the fixed population proportions by age. See chapter 5 of an earlier report (2). The age-adjusted death rates presented in this report were computed by the direct method, that is, by applying age-specific

death rates to the U.S. standard million population (3). See also chapter 10 of an earlier report (2). Age groups shown in table 5 were used to compute the age-adjusted rates shown in that table. It is important not to compare age-adjusted rates with crude rates.

**Current Mortality Sample**

The Current Mortality Sample (CMS) is a 10-percent systematic sample of death certificates drawn each month after the certificates are counted in the State registration offices. Deaths and death rates for the United States by age, race, sex, and cause are estimated based on the sample. Because of the additional time required to select and process the certificates, data based on the CMS are published 1 month after publication of the U.S. and State counts. Complete information concerning the underlying cause of death sometimes is not available when the sample is drawn. As a result, estimates based on sample counts for certain causes are biased. Correction for bias is not made in this report but is made in the annual summary (issue number 13 in this series) each year.

Estimated numbers of deaths based on the sample were proportionately adjusted to be consistent with estimates based on the count of death certificates received in State registration offices.

*HIV infection*—Beginning with data for 1987, the National Center for Health Statistics introduced category numbers \*042–\*044 for classifying and coding Human immunodeficiency virus infection. The asterisks before the category numbers indicate that these codes are not part of the *Ninth Revision, International Classification of Diseases*. Deaths classified to these categories are included in All other infectious and parasitic diseases in the List of 72 Selected Causes of Death and are also shown separately at the bottom of table 6.

*Sampling variability*—Because the estimates of deaths and death rates presented in this report (with the exception of total deaths and deaths under 1 year) are based on a sample of death certificates, they are subject to sampling variability. The estimated relative standard error shown in the following table is a measure of the sampling error of the

**Relative standard errors for estimated numbers of deaths from the Current Mortality Sample expressed as a percent of the estimate**

Estimated number of deaths	Relative standard error of estimate (as percent)	
	170,000 estimated deaths each month	2,000,000 estimated deaths each year
10 . . . . .	94.9	94.9
20 . . . . .	67.1	67.1
50 . . . . .	42.4	42.4
100 . . . . .	30.0	30.0
200 . . . . .	21.2	21.2
500 . . . . .	13.4	13.4
1,000 . . . . .	9.5	9.5
2,000 . . . . .	6.7	6.7
5,000 . . . . .	4.2	4.2
10,000 . . . . .	2.9	3.0
20,000 . . . . .	2.0	2.1
50,000 . . . . .	1.1	1.3
100,000 . . . . .	0.6	0.9
200,000 . . . . .	...	0.6
500,000 . . . . .	...	0.4
1,000,000 . . . . .	...	0.2

estimated number of deaths (or of the estimated death rate) expressed as a percent of the estimate. The first column refers to monthly estimates; the second, to annual estimates; cumulative year-to-date totals fall between the two.

The chances are about 2 in 3 that the percent difference between an estimate and the result of a complete count is less than the percent shown. The chances are about 19 in 20 that the percent difference is less than twice the percent shown. A figure based on 100 or fewer estimated deaths has a relative standard error of 30 percent or more and is, therefore, considered unreliable. A rate based on 100 or fewer estimated deaths has been replaced by an asterisk.

Unless otherwise specified, comparisons made in the text between death rates based on the CMS were statistically significant at the 0.05 level of significance. Lack of comment in the text about any two rates does not mean that the difference was tested and found not to be significant at this level.

*Mortality Surveillance System*—The Mortality Surveillance System (MSS) charts are based entirely on monthly provisional data from the CMS. Where sample size permits, age-race-sex comparisons are made for the causes of death. Where sample size is too small, only age-sex comparisons are made. A time series regression model of the following form was used:

$$Y(t) = A_0 + A_1 t + A_2 t^2 + C \cos(2\pi t / 12) + S \sin(2\pi t / 12) + \epsilon_t$$

where

- $Y(t)$  = monthly death rate at time  $t$
- $t$  = month number
- $A_0$  = coefficient, which, together with  $C$  determines the  $Y$ -intercept
- $A_1$  = coefficient of  $t$
- $A_2$  = coefficient of  $t^2$
- $C, S$  = coefficients of the harmonic terms
- $\epsilon_t$  = error terms, assumed to be independent and normally distributed with means 0 and constant variances,

and  $\cos(2\pi t / 12)$  and  $\sin(2\pi t / 12)$  are 12-month period harmonic functions.

The coefficients of this model were estimated using provisional monthly death rates for January 1985 through the month that is 12 months prior to the latest month shown in the chart. The graph of the estimated equation and 95-percent prediction intervals is shown from January 1987 through the month that is 12 months prior to the latest month shown in the chart; the graph for the subsequent 12 months is projected (4). Symbols in each chart represent actual monthly death rates based on the CMS. In some cases the data are converted by the natural logarithm before fitting the model. For graphical purposes the data are converted back to rates by the inverse of the natural logarithm. This procedure has the advantage of avoiding negative prediction intervals for the model. The models, parameter estimates, and statistical tests for lack of fit are available on request for the charts published in the MSS. Time series regression models have been used previously to describe trends in mortality data (5–7). A list of MSS cause-of-death topics and comparable *Healthy People 2000* (1) objectives is presented on the back of this report.

**State maps**

Unlike other data presented in this report, the State maps are based on final instead of provisional data. The infant mortality rates used to produce the first State map were computed by using 3-year total numbers of infant deaths and live births for 1989–91. Assigning the

States into the given categories on the maps was carried out in two steps: a) determining whether the State infant mortality rate differed significantly from the corresponding U.S. rate at the 0.05 level of significance; b) then grouping the State rates found to be significantly different from the U.S. rate into the four categories: 10 highest State rates of those significantly greater than the U.S. rate, remaining State rates significantly greater than the U.S. rate, 10 lowest State rates of those significantly lower than the U.S. rate, and remaining State rates significantly lower than the U.S. rate. Infant mortality rates and the corresponding 95-percent confidence intervals are shown in the tables. The symbols “†” and “††” in the tables are used to denote State rates that differ significantly from the U.S. rate at the 0.05 and 0.01 levels of significance, respectively. Different procedures were used to determine tests of statistical significance and confidence intervals, depending on the number of infant deaths.

For 50 infant deaths or more, the standard normal Z statistic was used to perform the significance test:

$$Z = (r_s - r_{us}) / \sqrt{S^2(r_s) + S^2(r_{us})}$$

where

$r_s$  = infant mortality rate for 1989–91 for the given State per 100,000 live births

$r_{us}$  = infant mortality rate for

1989–91 for the United States per 100,000 live births

$$S^2(r_s) = r_s^2 / D_s = \text{estimated variance of the infant mortality rate for 1989–91 for the State}$$

$$S^2(r_{us}) = r_{us}^2 / D_{us} = \text{estimated variance of the infant mortality rate for 1989–91 for the United States}$$

$D_s$  = number of infant deaths for the State for 1989–91

$D_{us}$  = number of infant deaths for the United States for 1989–91.

The variance of the infant mortality rates was computed under the assumption of no variance for live births and a Poisson probability distribution for infant deaths. The 95-percent confidence limits were estimated as follows:

$$\text{Lower limit} = r_s - 1.96 \cdot S(r_s)$$

and

$$\text{Upper limit} = r_s + 1.96 \cdot S(r_s)$$

For 1–49 infant deaths, the lower and upper 95-percent confidence limits were estimated as described elsewhere (8). The difference between the State and U.S. infant mortality rates was determined to be statistically significant at 0.05 or 0.01 level if the rates' respective 95-percent or 99-percent confidence limits did not overlap.

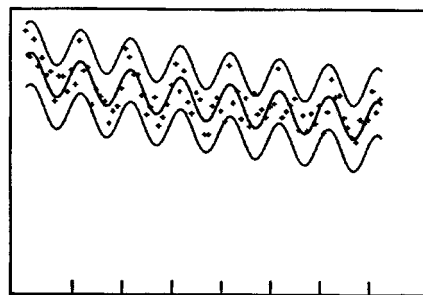
For the second State map, postneonatal mortality rates were used instead of infant mortality rates. Except for the substitution of infant deaths with postneonatal deaths, all the above procedures used to produce the first State map were also used to produce the second State map.

## References

1. U.S. Department of Health and Human Services. Healthy People 2000: National health promotion and disease prevention objectives. Washington: Public Health Service. 1991.
2. Feinleib M, Zarate AO, eds. Reconsidering age adjustment procedures: Workshop proceedings. National Center for Health Statistics. Vital Health Stat 4(29). 1992.
3. Grove RD, Hetzel AM. Vital Statistics Rates in the United States, 1940–1960. Public Health Service. Washington: National Center for Health Statistics. 1968.
4. Ostle B. Statistics in research. 2d ed. Ames, Iowa: The Iowa State University Press, 159–221. 1963.
5. Lui KJ, Kendal AP. Impact of influenza epidemics on mortality in the United States from October 1972 to May 1985. Am J Public Health 77(6):712–6. 1987.
6. Serfling RE. Methods for current statistical analysis of excess pneumonia-influenza deaths. Public Health Rep 78(6):494–506. 1963.
7. Shumway RH. Applied statistical time series analysis. Englewood Cliffs, New Jersey: Prentice-Hall Press. 1988.
8. Haenszel W, Loveland DB, Sirken MG. Lung cancer mortality as related to residence and smoking histories. I. White Males. JNCI 28:947–1001. 1962.

**Mortality Surveillance System topics**

<i>MVSR issue</i>	<i>Cause-of-death</i>	<i>Healthy People 2000 Objective Number</i>
Vol. 43 No. 1	Human immunodeficiency virus infection	(1)
Vol. 43 No. 2	Cerebrovascular diseases	15.2
Vol. 43 No. 3	Chronic obstructive pulmonary diseases and allied conditions	3.3
Vol. 43 No. 4	Diabetes mellitus	17.9
Vol. 43 No. 5	Diseases of heart	1.1 (2.1, 3.1, 15.1)
Vol. 43 No. 6	Malignant neoplasms including neoplasms of lymphatic and hematopoietic tissues	2.2 (16.1)
Vol. 43 No. 7	Malignant neoplasms of trachea, bronchus, and lung	3.2 (16.2)
Vol. 43 No. 8	Malignant neoplasm of prostate, Malignant neoplasm of breast	(2), 16.3
Vol. 43 No. 9	Motor vehicle accidents	9.3
Vol. 43 No. 10	Suicide	6.1 (7.2)
Vol. 43 No. 11	Accidents and adverse effects, Homicide and legal intervention	9.1, 7.1 (3)
Vol. 43 No. 12	Infant mortality, Neonatal mortality, Postneonatal mortality, and Sudden infant death syndrome	14.1 (4)



<sup>1</sup>No *Healthy People 2000* objective addresses mortality from this cause. See Chapter 18 for objectives related to Human immunodeficiency virus infection.

<sup>2</sup>No *Healthy People 2000* objective addresses mortality from Malignant neoplasm of prostate.

<sup>3</sup>No *Healthy People 2000* objective addresses mortality from Legal intervention.

<sup>4</sup>No *Healthy People 2000* objective addresses mortality from Sudden infant death syndrome.

NOTE: The cause-of-death categories used in *Healthy People 2000* objective(s) may differ from those used in NCHS Mortality Tabulation Lists.

**National Center for Health Statistics**

Acting Director  
Jack R. Anderson

Acting Deputy Director  
Jennifer H. Madans, Ph.D.

Associate Director for  
Vital and Health Statistics Systems  
Peter L. Hurley

**Division of Vital Statistics**

Acting Director  
Mary Anne Freedman

**Suggested citation**

National Center for Health Statistics. Births, marriages, divorces, and deaths for 1994. Monthly vital statistics report; vol 43 no 12. Hyattsville, Maryland: Public Health Service. 1995.

**Copyright information**

All material appearing in this report is in the public domain and may be reproduced or copied without permission; citation as to source, however, is appreciated.

**DEPARTMENT OF HEALTH AND HUMAN SERVICES**

Public Health Service  
Centers for Disease Control and Prevention  
National Center for Health Statistics  
6525 Belcrest Road  
Hyattsville, Maryland 20782

FIRST CLASS MAIL  
POSTAGE & FEES PAID  
PHS/NCHS  
PERMIT NO. G-281

OFFICIAL BUSINESS  
PENALTY FOR PRIVATE USE, \$300

To receive this publication regularly, contact the National Center for Health Statistics by calling 301-436-8500  
E-mail: [nchsquery@nch10a.em.cdc.gov](mailto:nchsquery@nch10a.em.cdc.gov)  
Internet: <http://www.cdc.gov/nchswww/nchshome.htm>

DHHS Publication No. (PHS) 95-1120  
4-1070 (6/95)